

V&V Reference Report

L2 ASCDS Version : 8.4.4

Observation 10164 - L2 Version 2
Chandra X-Ray Center

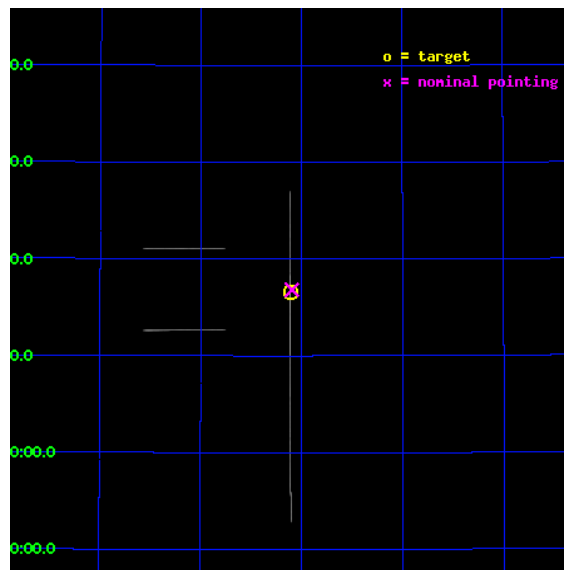
L2 Processing Date : Jun 8 2012

Contents

1	Front	2
2	OBI	3
2.1	OBI	3
2.1.1	Images	3
2.1.2	Bias	3
2.1.3	Parameters	4
2.1.4	Events	4
2.2	Compared Parameters	5
2.3	Aspect	6
2.4	Star Slots	9
2.4.1	Slot 3	9
2.4.2	Slot 4	10
2.4.3	Slot 5	11
2.4.4	Slot 6	12
2.4.5	Slot 7	13
2.5	FID Slots	14
2.5.1	Slot 0	14
2.5.2	Slot 1	15
2.5.3	Slot 2	16
A	Summary	17
A.1	Status	17
A.2	Comments	17

1 Front

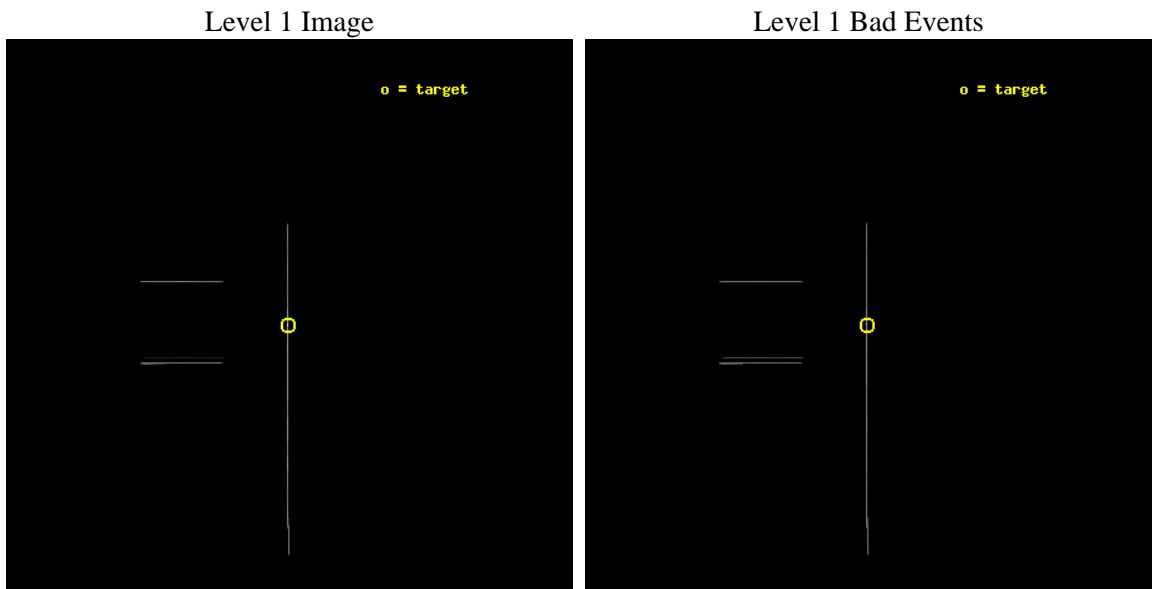
seq_num	501091	Sequence number
obs_id	10164	Observation id
title	ToO Observations of Soft Gamma Repeaters	Proposal title
observer	Dr. CHRYSSA KOUVELIOTOU	Principal investigator
object	SGR 0501+4516	Source name
ra_targ	75.277917	Observer's specified target RA [deg]
dec_targ	45.276222	Observer's specified target Dec [deg]
ra_nom	75.27432409767	Nominal RA [deg]
dec_nom	45.280362612267	Nominal Dec [deg]
roll_nom	89.899515048483	Nominal Roll [deg]
revision	2	Processing version of data
ontime	36633.0	Sum of GTIs [s]
livetime	36489.90234375	Livetime [s]
ontime2	36633.0	Sum of GTIs [s]
ontime3	36633.0	Sum of GTIs [s]
ontime6	36633.0	Sum of GTIs [s]
ontime7	36633.0	Sum of GTIs [s]
ontime8	36633.0	Sum of GTIs [s]
ontime9	36633.0	Sum of GTIs [s]
l2events	665401	Number of level 2 events



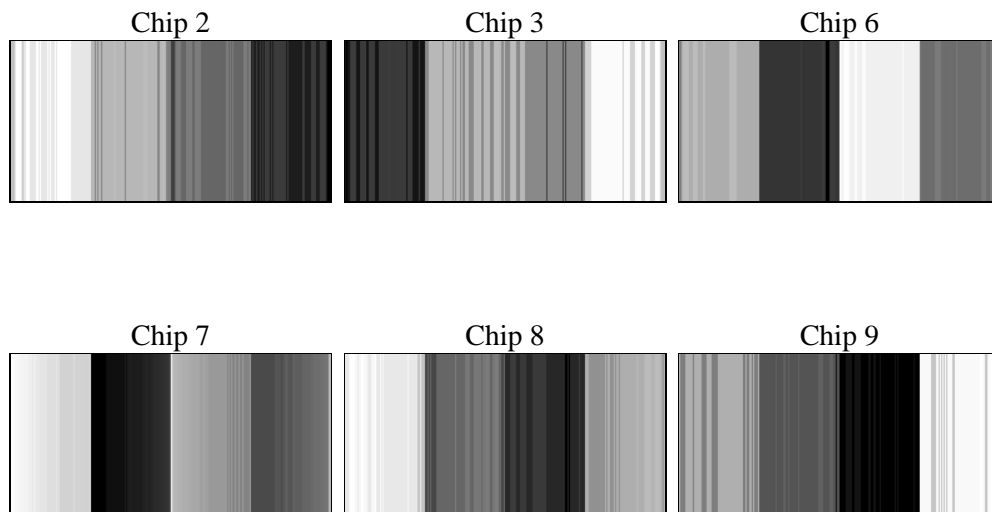
2 OBI

2.1 OBI

2.1.1 Images



2.1.2 Bias



2.1.3 Parameters

obi_num	0	Obi number	sched_exp_time	36501.415000	[s] Scheduled observation exposure time
ascdsver	8.4.4	Processing system revision	ontime	36633.0	Sum of GTIs [s]
caldbver	4.4.9	 	ontime2	36633.0	Sum of GTIs [s]
date	2012-05-19T22:00:20	Date and time of file creation	ontime3	36633.0	Sum of GTIs [s]
revision	2	Processing version of data	ontime6	36633.0	Sum of GTIs [s]
			ontime7	36633.0	Sum of GTIs [s]
			ontime8	36633.0	Sum of GTIs [s]
			ontime9	36633.0	Sum of GTIs [s]
			l1events	932215	Number of level 1 events

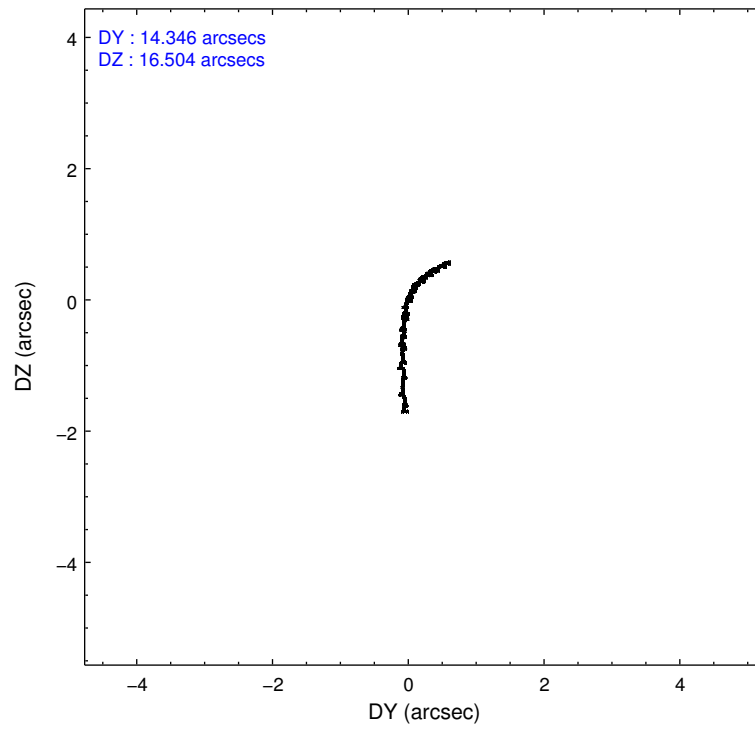
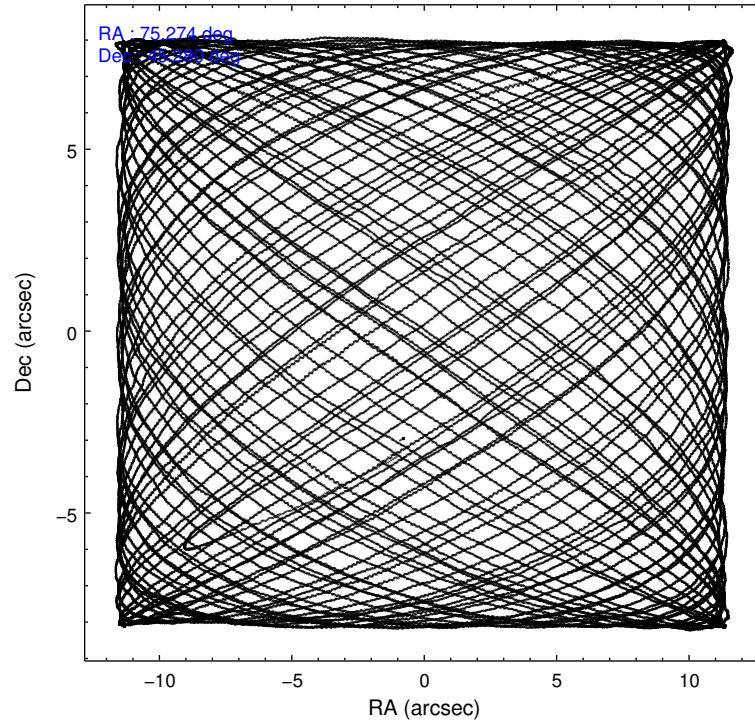
2.1.4 Events

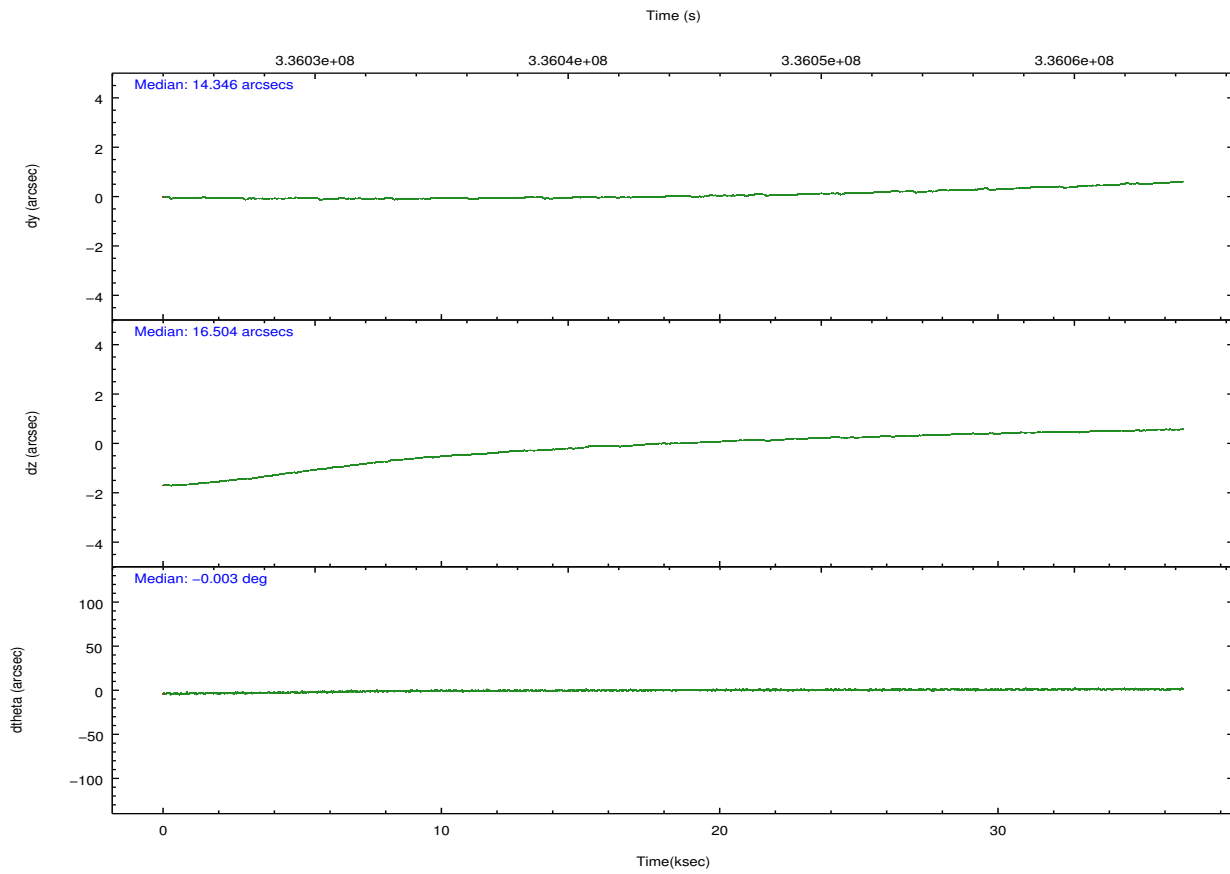
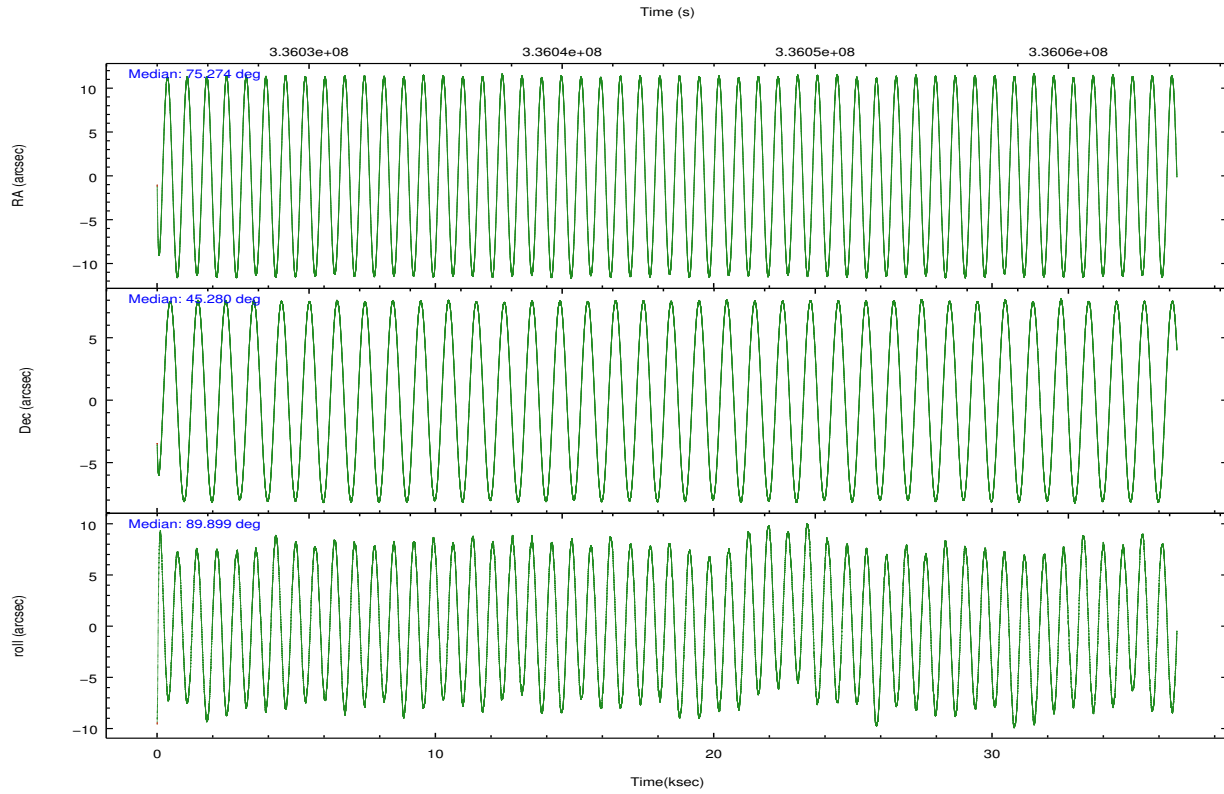
	ccd 2	ccd 3	ccd 6	ccd 7	ccd 8	ccd 9		ccd 2	ccd 3	ccd 6	ccd 7	ccd 8	ccd 9
level 1 events	75038	82484	84724	427920	175817	86232	grade 0 events	9069	9224	8399	57916	30800	9417
rejected events	16282	18142	19195	49377	28179	20036		12%	11%	9%	13%	17%	10%
rejected %	21%	21%	22%	11%	16%	23%	grade 1 events	330	345	349	979	624	351
								0%	0%	0%	0%	0%	0%
							grade 2 events	23315	25437	26429	102466	47146	25249
								31%	30%	31%	23%	26%	29%
							grade 3 events	7498	8798	8239	32503	16689	7737
								9%	10%	9%	7%	9%	8%
							grade 4 events	7515	7551	7640	31787	16203	8547
								10%	9%	9%	7%	9%	9%
							grade 5 events	14239	16071	16973	42025	23438	17859
								18%	19%	20%	9%	13%	20%
							grade 6 events	13072	15058	16695	160244	40917	17072
								17%	18%	19%	37%	23%	19%
							grade 7 events	0	0	0	0	0	0
								0%	0%	0%	0%	0%	0%

2.2 Compared Parameters

Parameter	Planned	Actual	Parameter	Planned	Actual
Instrument	ACIS	ACIS	Obspar format version number	7	7
Detector	ACIS-236789	ACIS-236789	Obspar file type	PREDICTED	ACTUAL
Grating	NONE	NONE	Obspar update status	NONE	UPDATED
Data mode	CC33_FAINT	CC33_FAINT	CCD I0 on	N	N
Observation mode	POINTING	POINTING	CCD I1 on	N	N
[deg] Pointing RA	75.294133	75.27432409767037	CCD I2 on	O2	Y
[deg] Pointing Dec	45.256840	45.28036261226677	CCD I3 on	O3	Y
[deg] Pointing Roll	89.728818	89.89951504848253	CCD S0 on	N	N
[mm] SIM focus pos	-0.684267	-0.6828225247311905	CCD S1 on	N	N
[mm] SIM defocus	0	0.001444936568705701	CCD S2 on	Y	Y
[mm] SIM translation stage pos	-190.132523	-190.1400660498719	CCD S3 on	Y	Y
[mm] SIM translation stage offset	0	0.00754346686406393	CCD S4 on	Y	Y
[s] Observation start time (MET)	336025966.184000	336024797.68647	CCD S5 on	O1	Y
Observation start date	2008-08-25T04:31:41	2008-08-25T04:13:17	Number of optional ACIS chips dropped	0	0
[s] Observation end time (MET)	336062468.184000	336062684.76333	On-chip summing requested	N	N
Observation end date	2008-08-25T14:40:03	2008-08-25T14:44:44	Subarray requested	NONE	NONE
Read mode	CONTINUOUS	CONTINUOUS	Alternating exposures requested	N	N
			[s] Primary exposure time	0.000000	0

2.3 Aspect



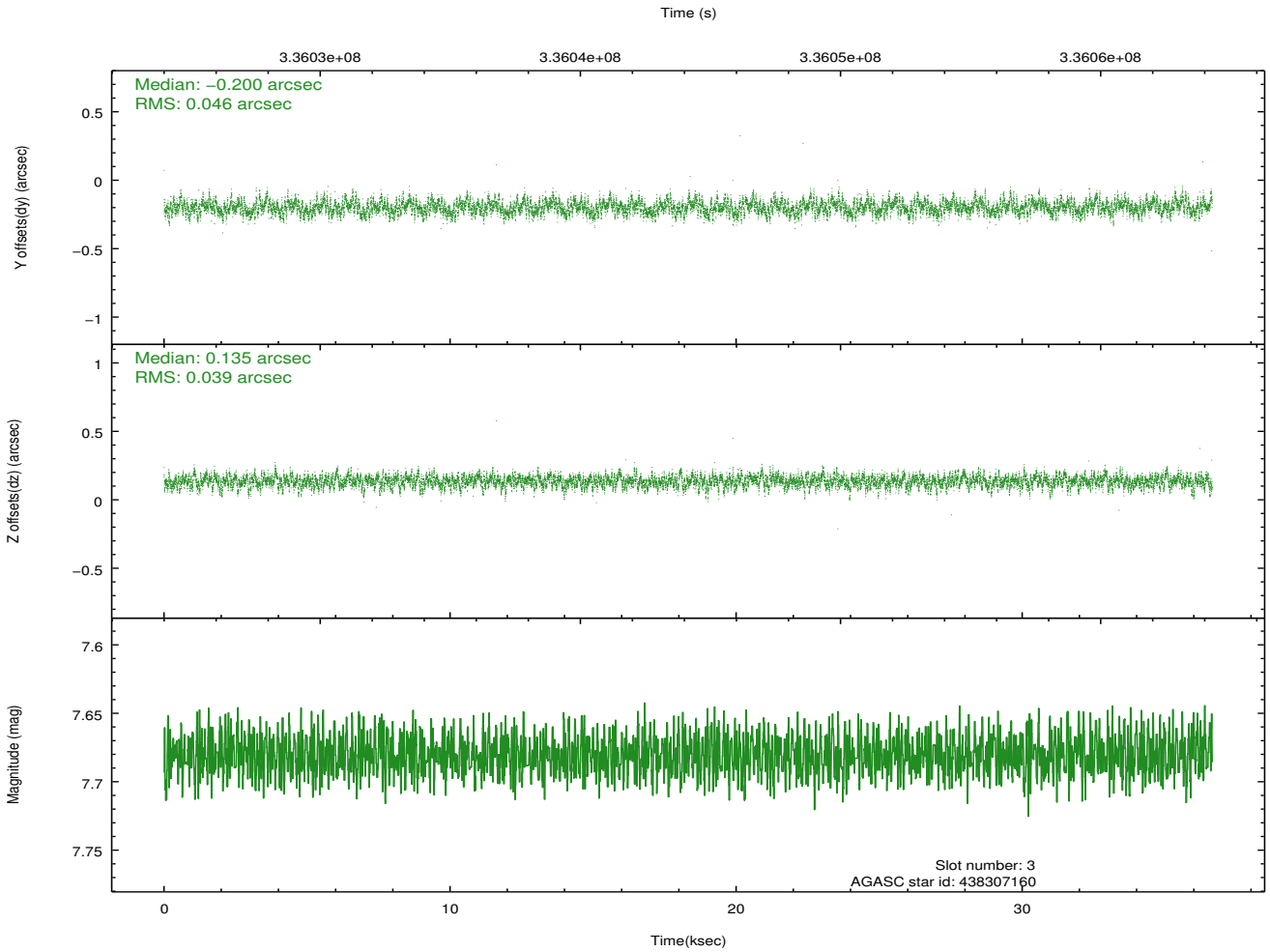
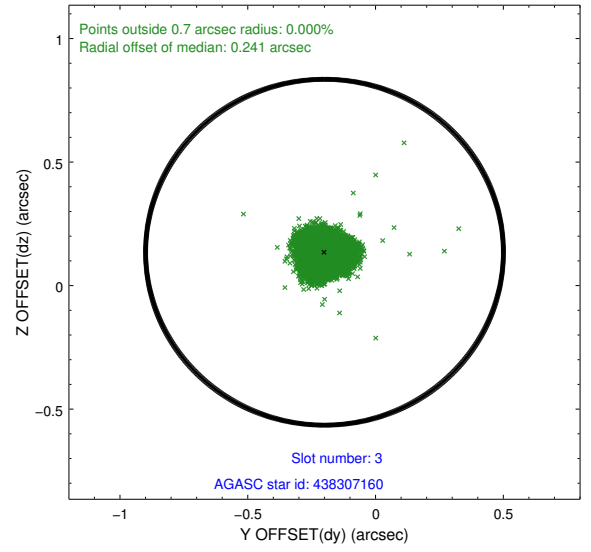
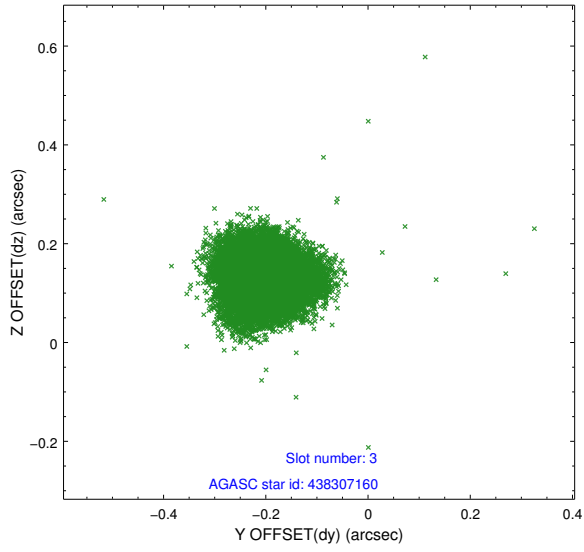


Slot Statistics

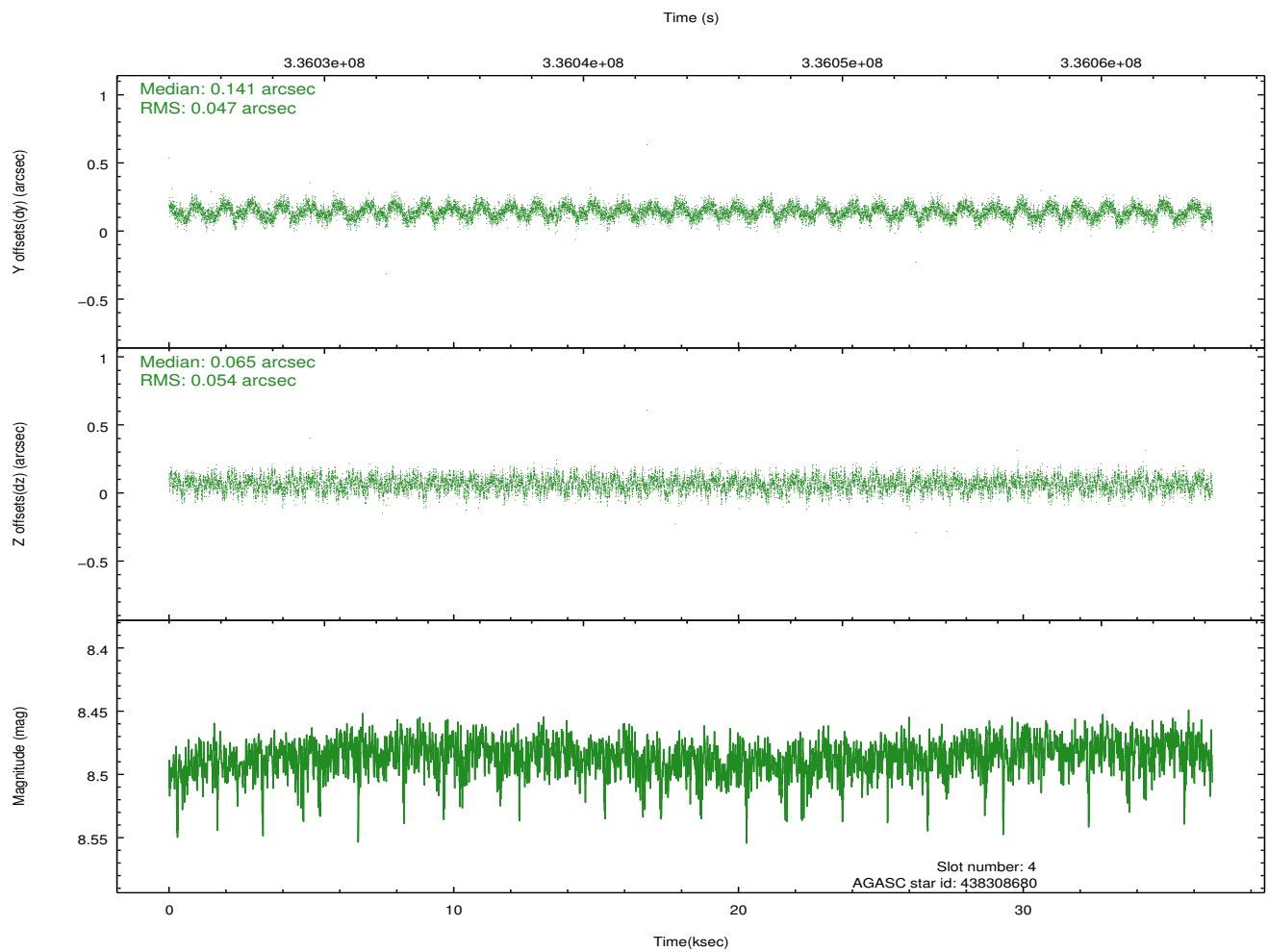
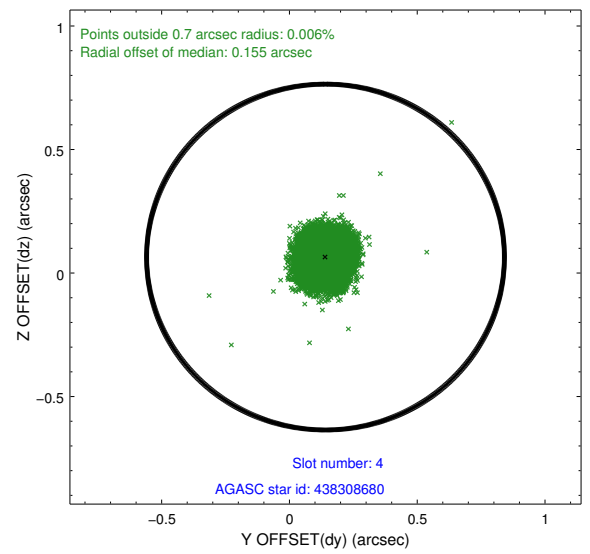
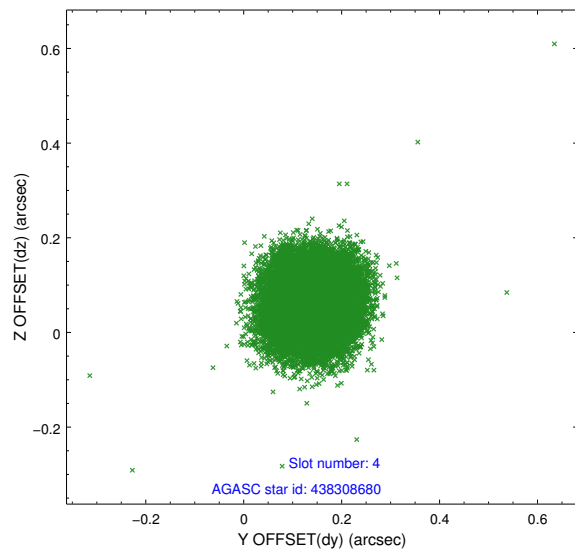
slot	status	id	mag	n_pts	med_dy	med_dz	dr1	dr2	ra	dec	mean_y	mean_z
0	FID	ACIS-S-1	7.00	8936	0.101	-0.051	0.012	0.059	0.000000	0.000000	928.67	-1733.42
1	FID	ACIS-S-2	6.92	8937	-0.103	-0.002	0.011	0.026	0.000000	0.000000	-767.42	-1737.90
2	FID	ACIS-S-6	7.14	8937	-0.018	0.057	0.009	0.035	0.000000	0.000000	394.30	808.00
3	GUIDE	438307160	7.68	17865	-0.200	0.135	0.063	0.102	75.339715	45.888971	2275.67	-103.01
4	GUIDE	438308680	8.49	17863	0.141	0.065	0.077	0.119	75.553451	45.026038	-826.30	-663.51
5	GUIDE	438314176	8.38	17868	0.055	0.129	0.069	0.108	75.326509	45.446275	682.63	-78.21
6	GUIDE	381030024	8.34	17863	0.090	-0.092	0.073	0.113	75.061936	44.874027	-1379.98	585.84
7	GUIDE	438307640	9.22	17849	-0.089	-0.236	0.081	0.134	75.288023	45.841930	2105.83	24.57

2.4 Star Slots

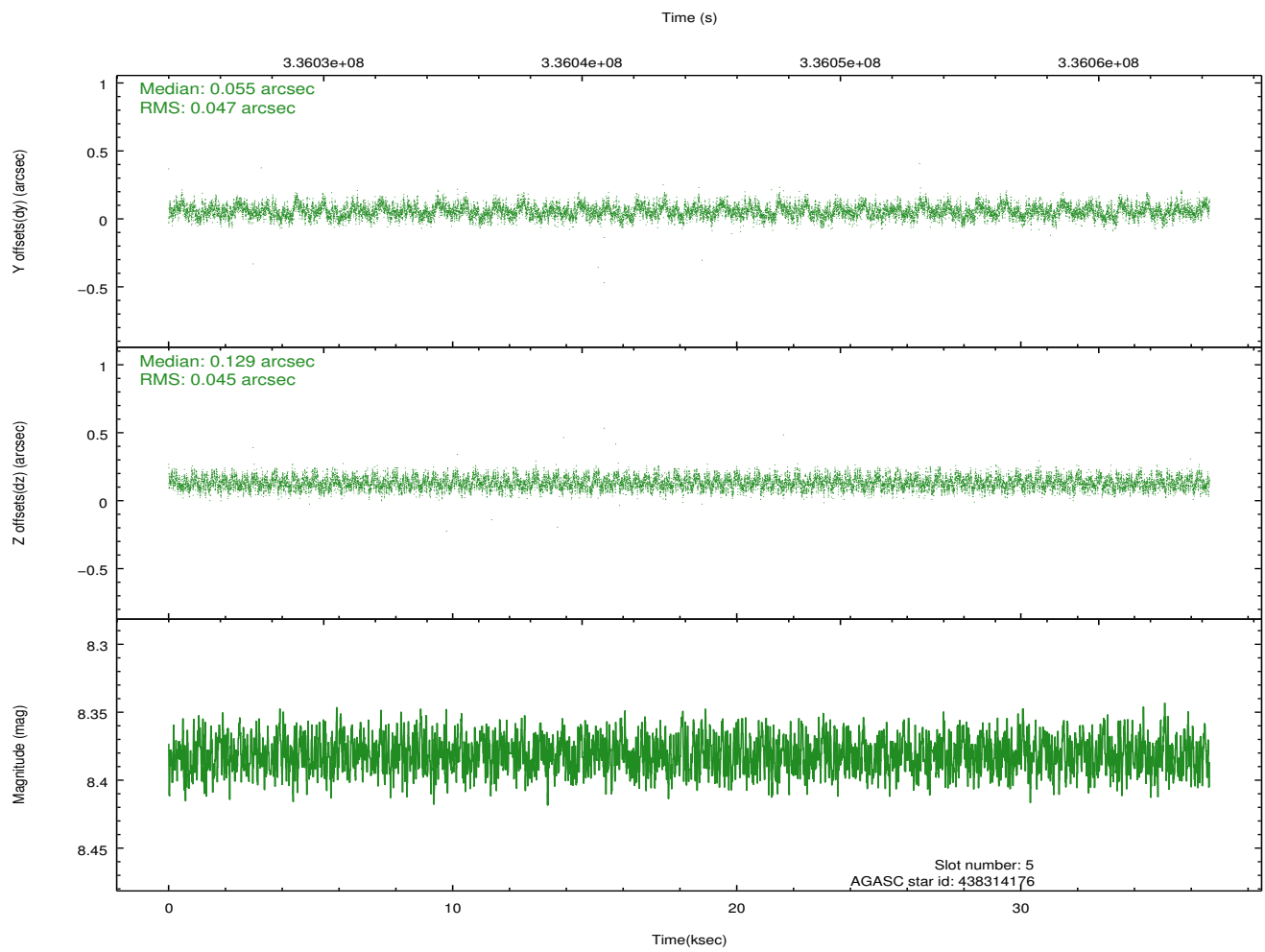
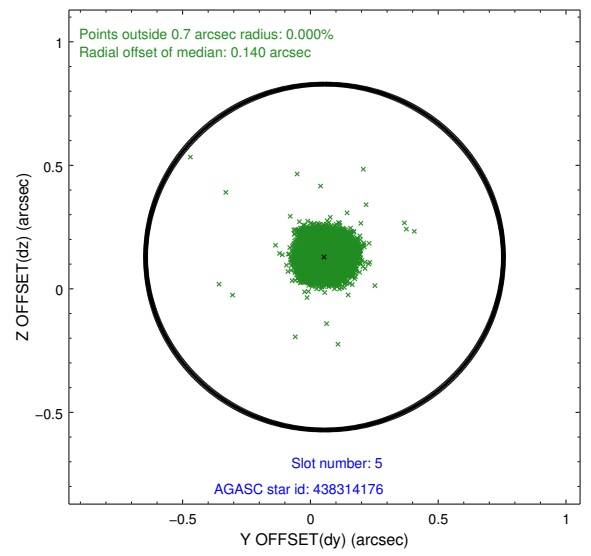
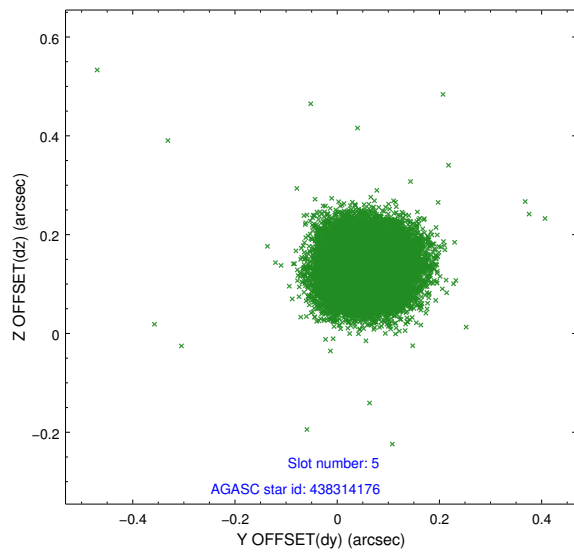
2.4.1 Slot 3



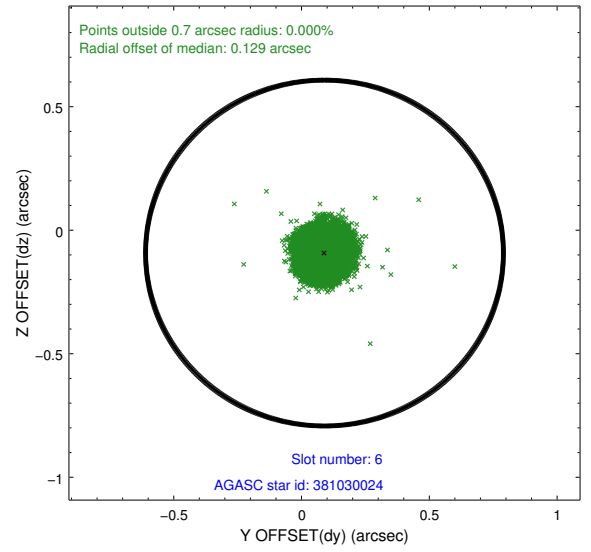
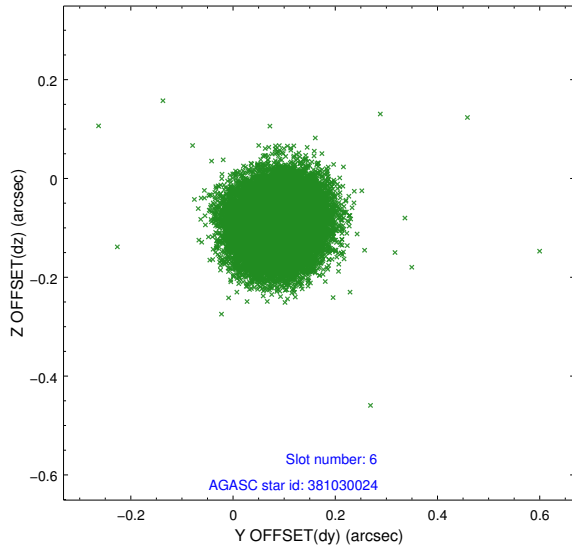
2.4.2 Slot 4



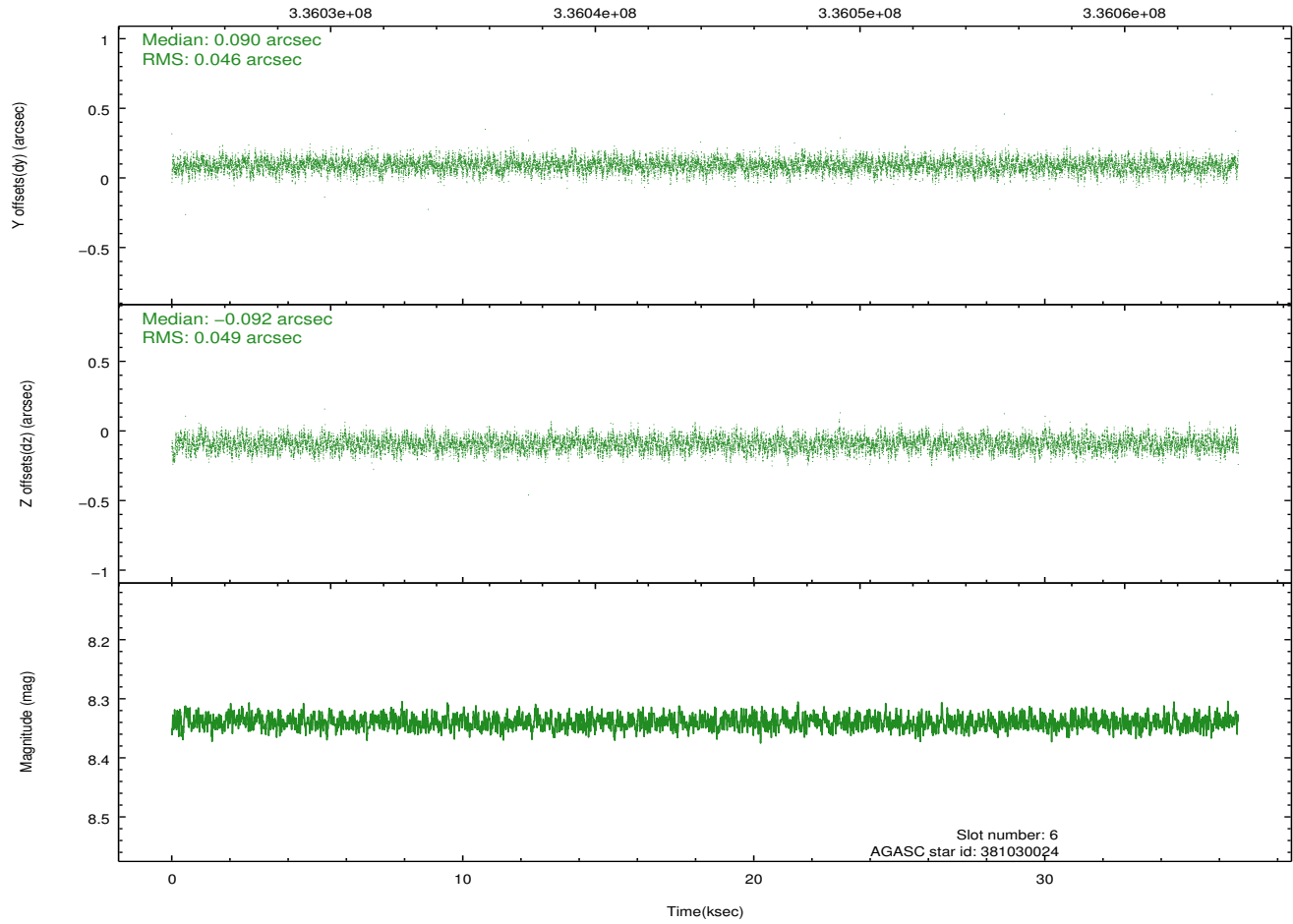
2.4.3 Slot 5



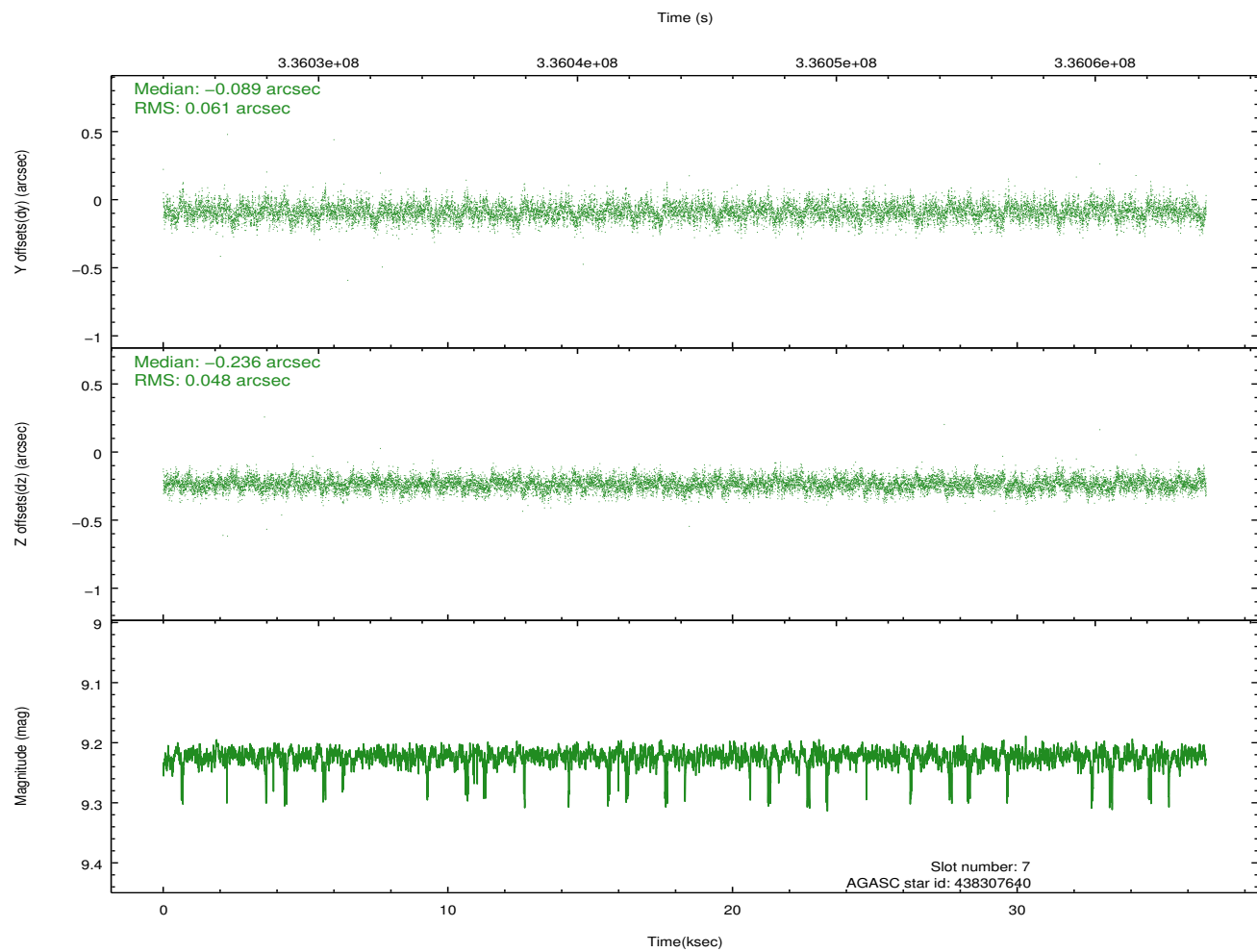
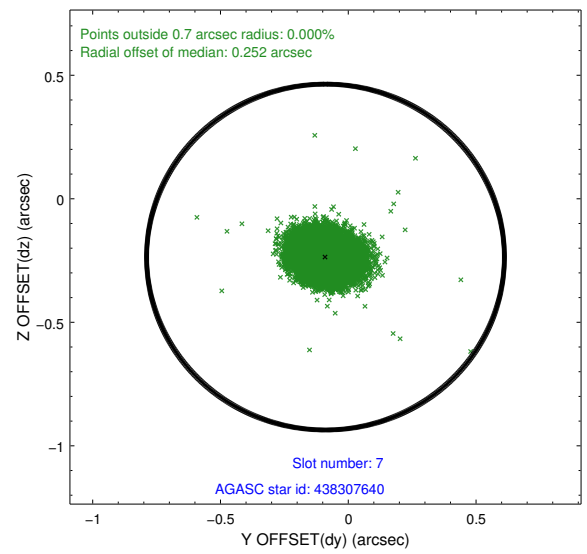
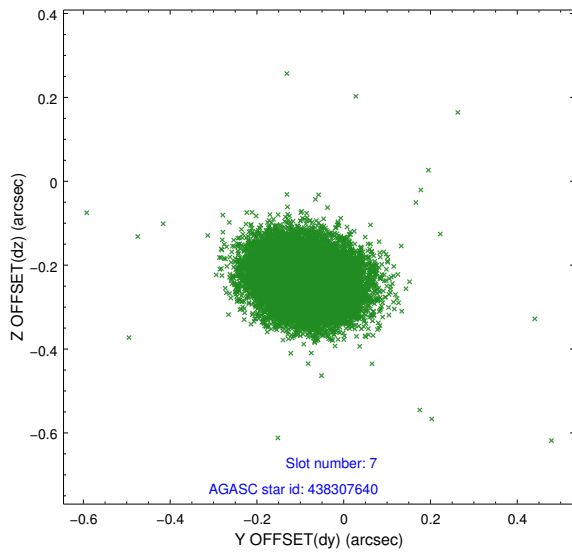
2.4.4 Slot 6



Time (s)

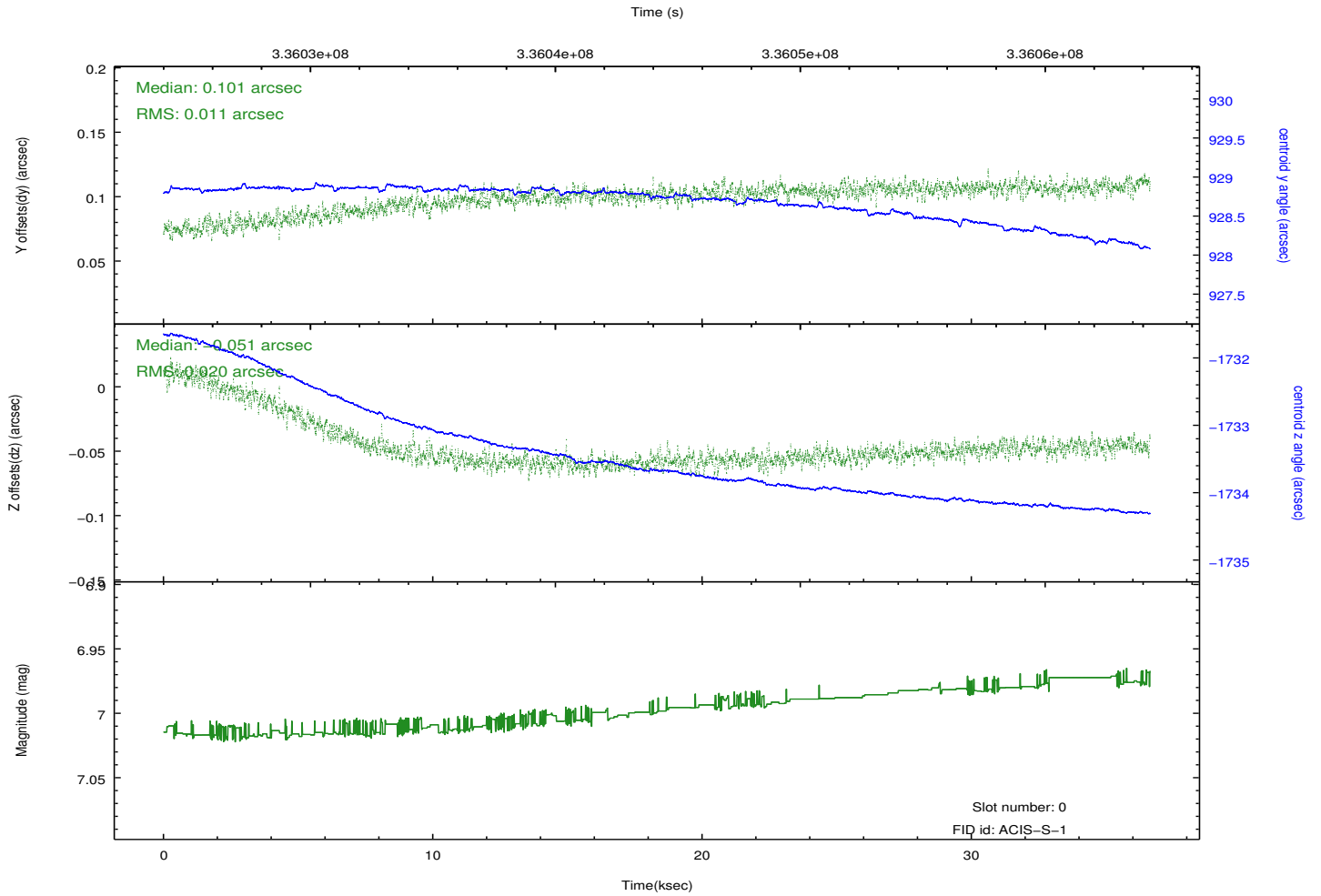
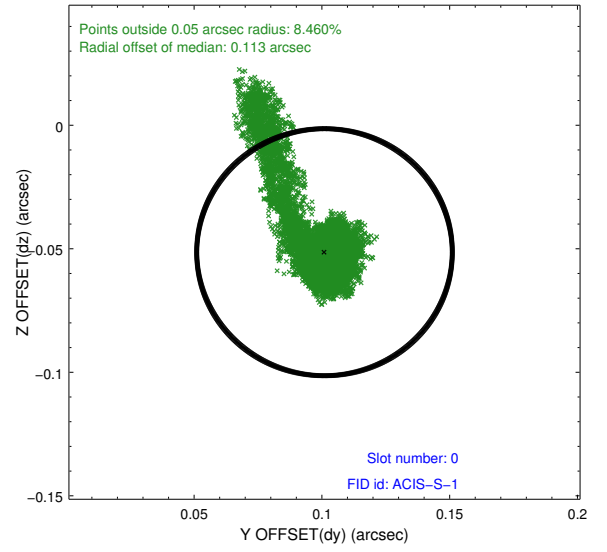
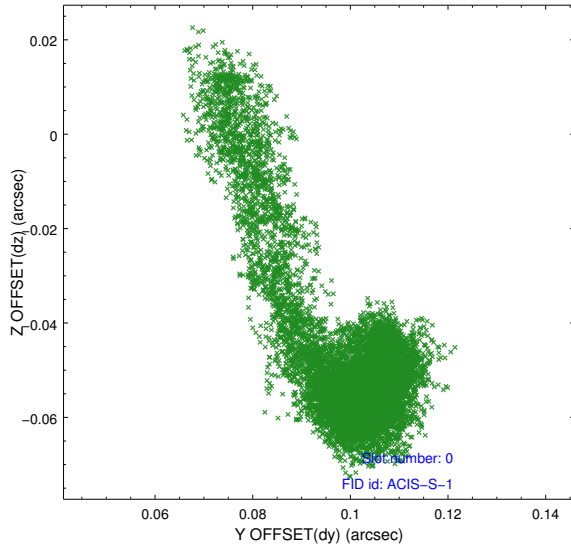


2.4.5 Slot 7

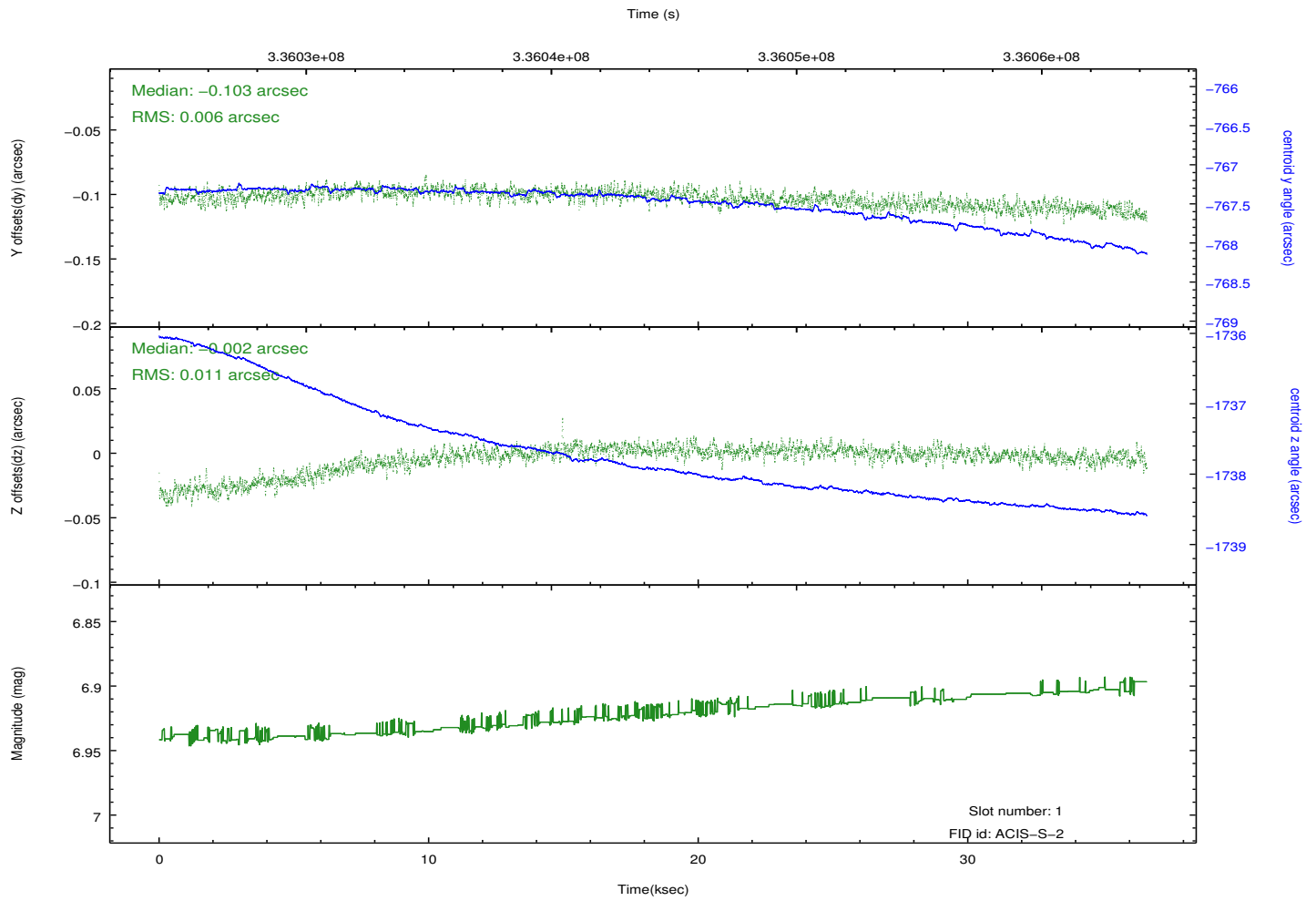
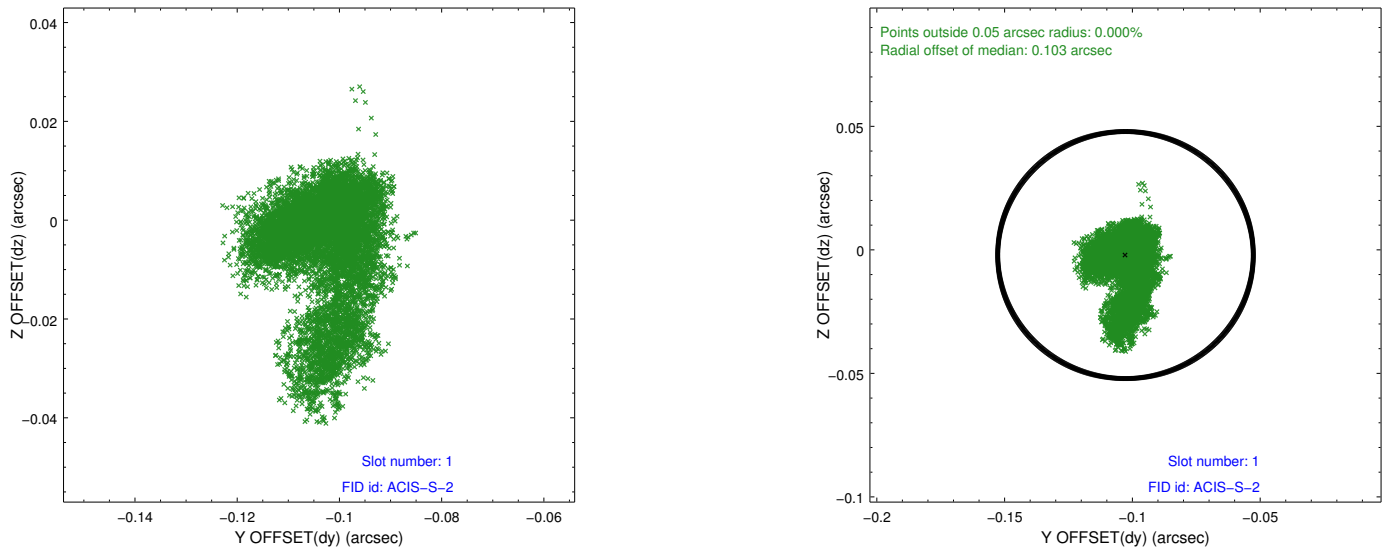


2.5 FID Slots

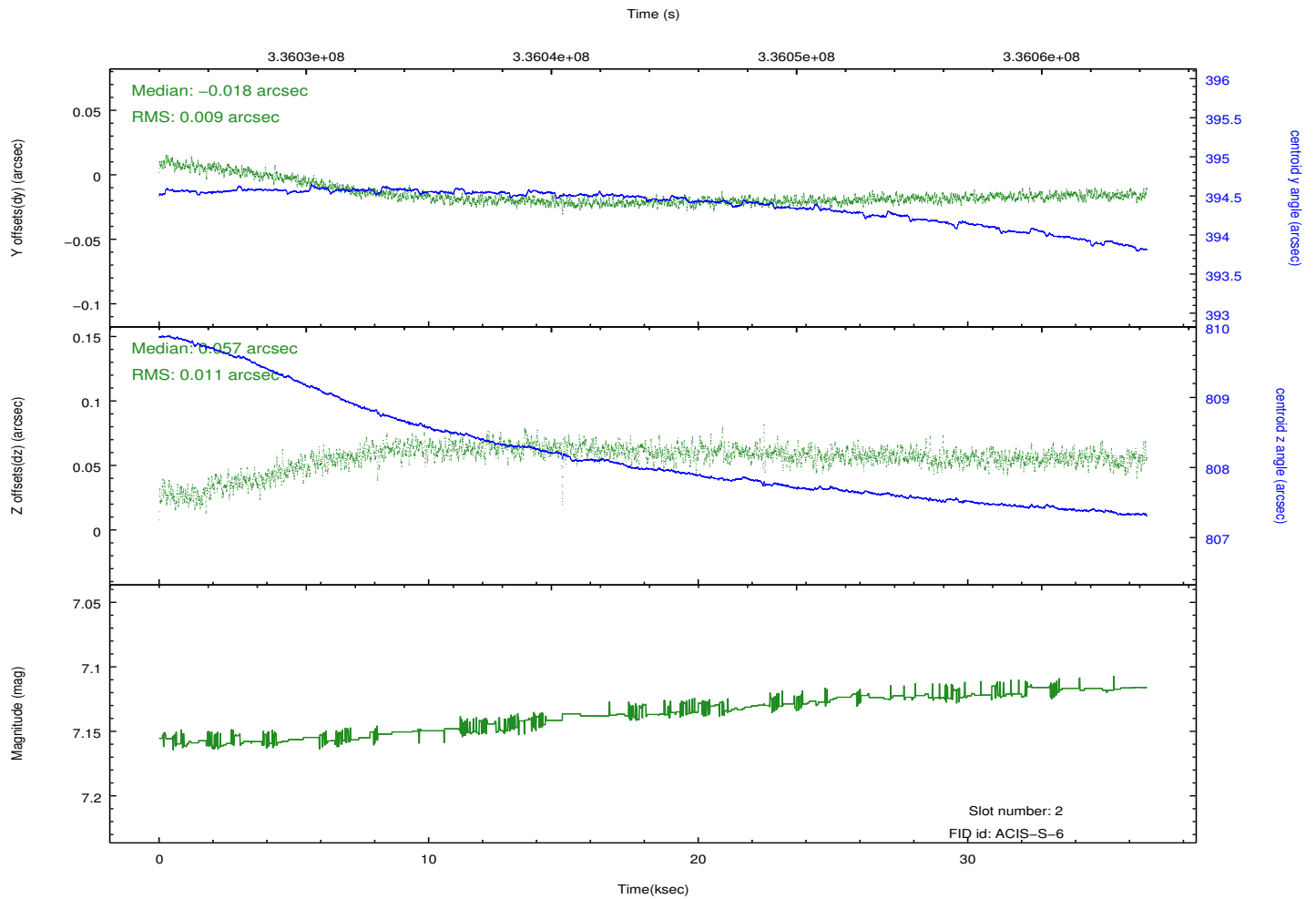
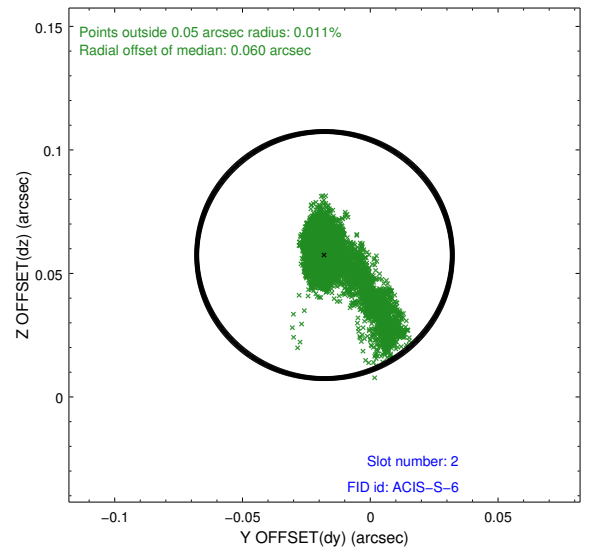
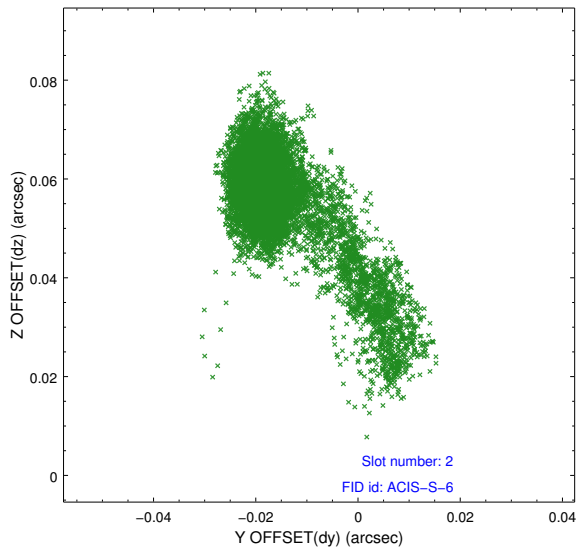
2.5.1 Slot 0



2.5.2 Slot 1



2.5.3 Slot 2



A Summary

A.1 Status

V&V Scientist	Joy Nichols
V&V Date (YYYY-MM-DD)	2012.06.13
V&V Edition	1
V&V Disposition and Status	OK
V&V Charge Time	36.633

A.2 Comments