

V&V Reference Report

L2 ASCDS Version : 8.4.4

Observation 10314 - L2 Version 2
Chandra X-Ray Center

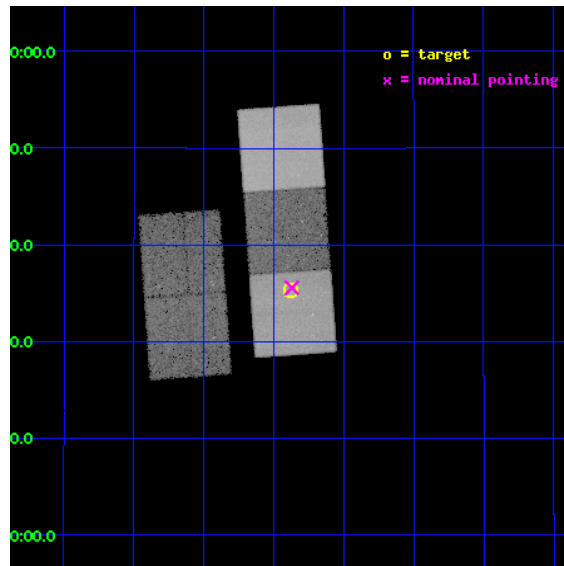
L2 Processing Date : May 31 2012

Contents

1	Front	2
2	OBI	3
2.1	OBI	3
2.1.1	Images	3
2.1.2	Bias	3
2.1.3	Parameters	4
2.1.4	Events	4
2.2	Compared Parameters	5
2.3	Aspect	6
2.4	Star Slots	9
2.4.1	Slot 3	9
2.4.2	Slot 4	10
2.4.3	Slot 5	11
2.4.4	Slot 6	12
2.4.5	Slot 7	13
2.5	FID Slots	14
2.5.1	Slot 0	14
2.5.2	Slot 1	15
2.5.3	Slot 2	16
A	Summary	17
A.1	Status	17
A.2	Comments	17

1 Front

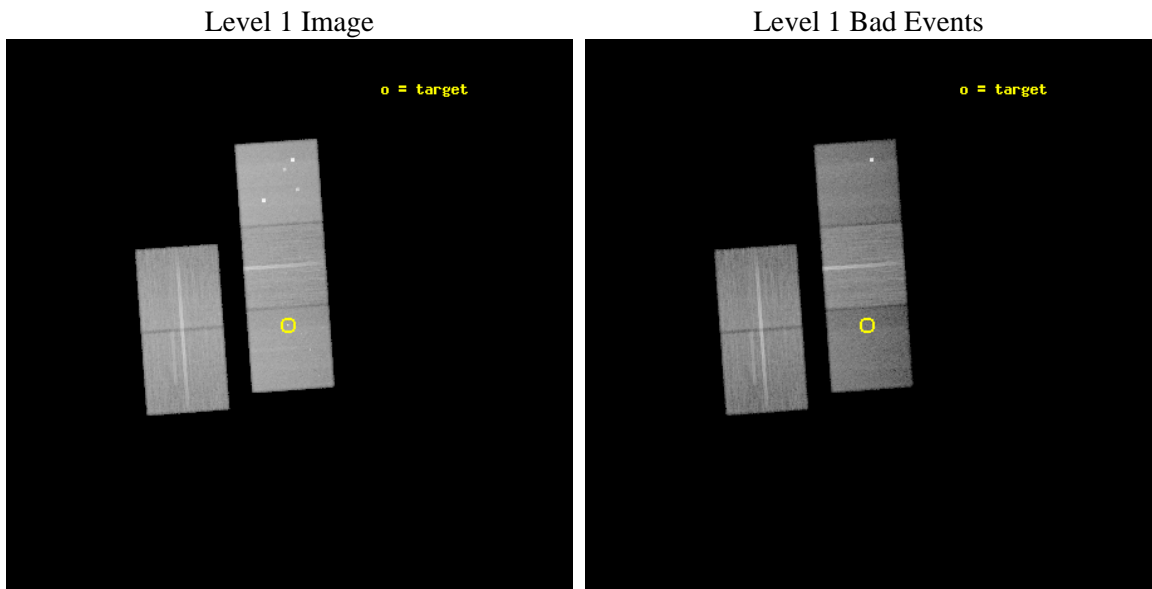
seq_num	701857	Sequence number
obs_id	10314	Observation id
title	Two to Tango? Binary Quasars, their Environments, and the Merger Hypothesis	Proposal title
observer	Dr. Paul Green	Principal investigator
object	SDSSJ1158+1235	Source name
dtcycle	0	
cycle	P	events from which exps? Prim/Second/Both
ra_targ	179.595	Observer's specified target RA [deg]
dec_targ	12.5885	Observer's specified target Dec [deg]
ra_nom	179.59270555488	Nominal RA [deg]
dec_nom	12.592784205318	Nominal Dec [deg]
roll_nom	85.882759502274	Nominal Roll [deg]
revision	2	Processing version of data
ontime	31235.600240231	Sum of GTIs [s]
livetime	30827.484127778	Livetime [s]
ontime2	31235.600240231	Sum of GTIs [s]
ontime3	31219.895168722	Sum of GTIs [s]
ontime5	31235.600240231	Sum of GTIs [s]
ontime6	31232.4592399	Sum of GTIs [s]
ontime7	31235.600240231	Sum of GTIs [s]
l2events	334823	Number of level 2 events



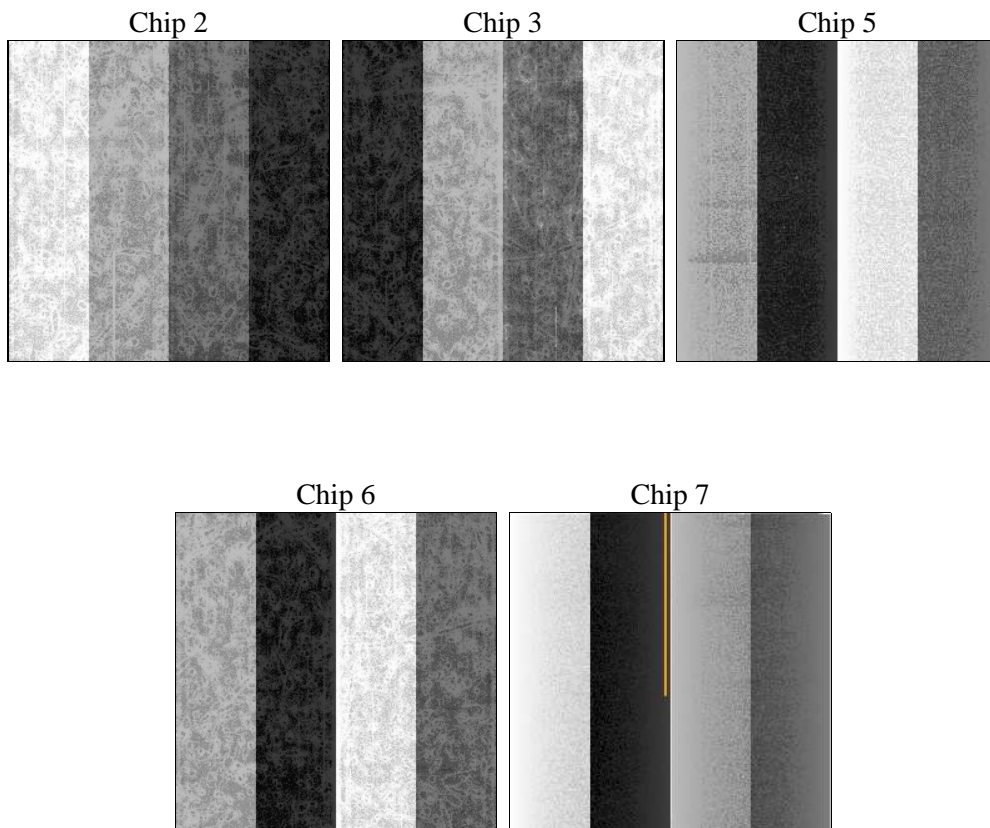
2 OBI

2.1 OBI

2.1.1 Images



2.1.2 Bias



2.1.3 Parameters

obi_num	0	Obi number	sched_exp_time	31100.000000	[s] Scheduled observation exposure time
ascdsver	8.4.4	Processing system revision	ontime	31235.600240231	Sum of GTIs [s]
caldbver	4.4.9	 	ontime2	31235.600240231	Sum of GTIs [s]
date	2012-05-31T00:14:51	Date and time of file creation	ontime3	31219.895168722	Sum of GTIs [s]
revision	2	Processing version of data	ontime5	31235.600240231	Sum of GTIs [s]
			ontime6	31232.4592399	Sum of GTIs [s]
			ontime7	31235.600240231	Sum of GTIs [s]
			l1events	1368949	Number of level 1 events

2.1.4 Events

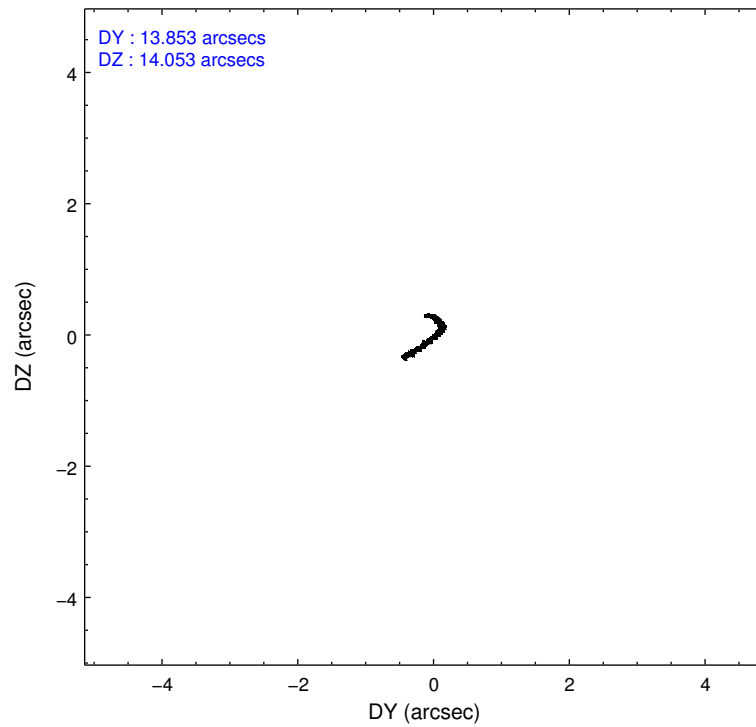
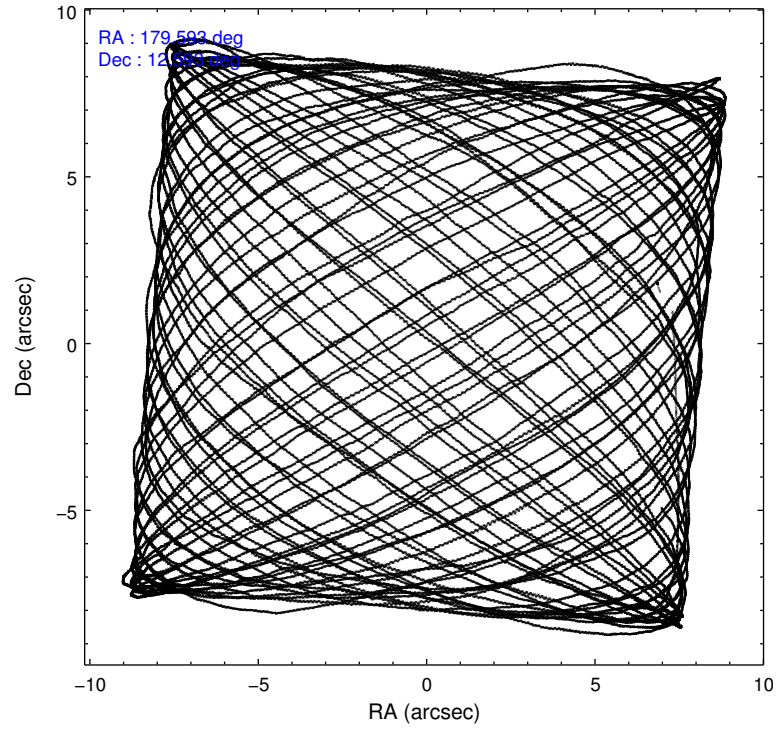
	ccd 2	ccd 3	ccd 5	ccd 6	ccd 7
level 1 events	264522	247175	344001	260697	252554
rejected events	240559	224312	168031	234976	132251
rejected %	90%	90%	48%	90%	52%

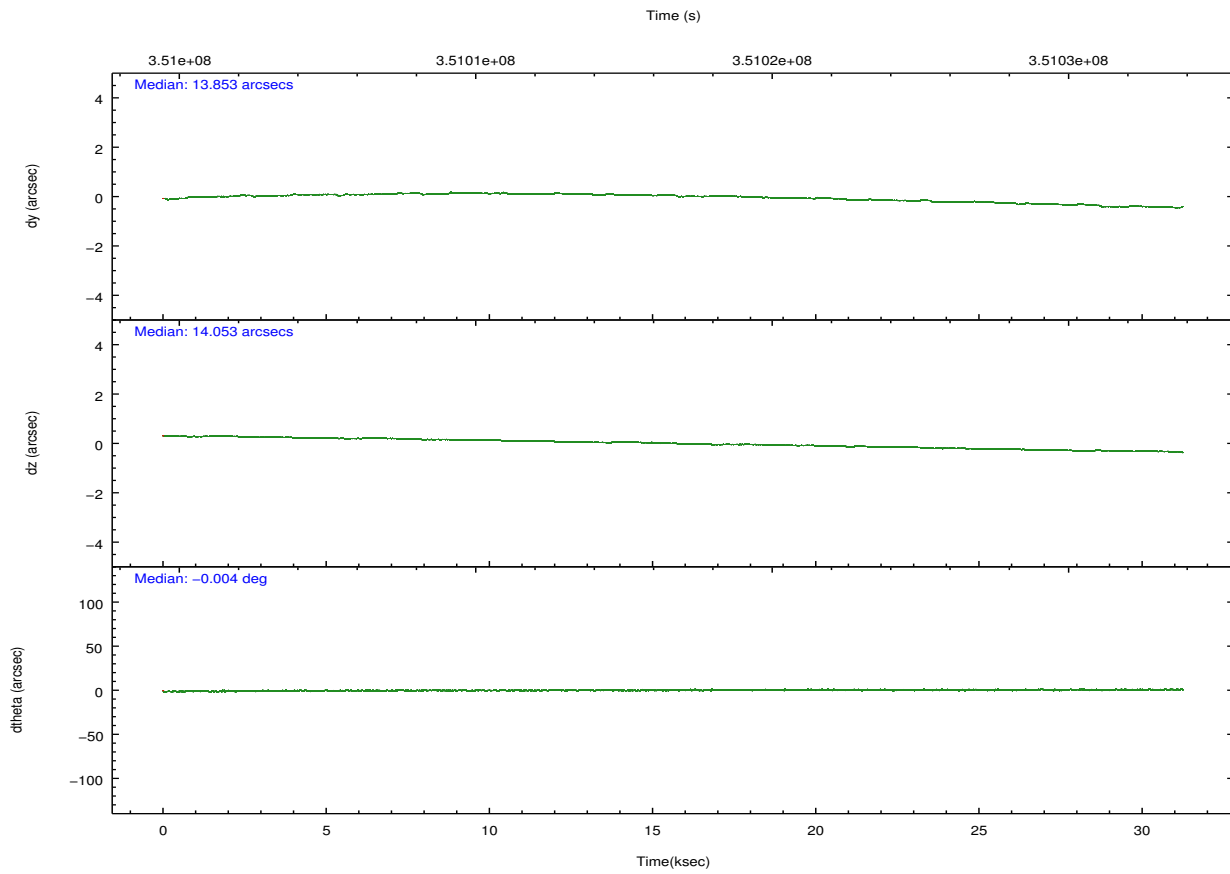
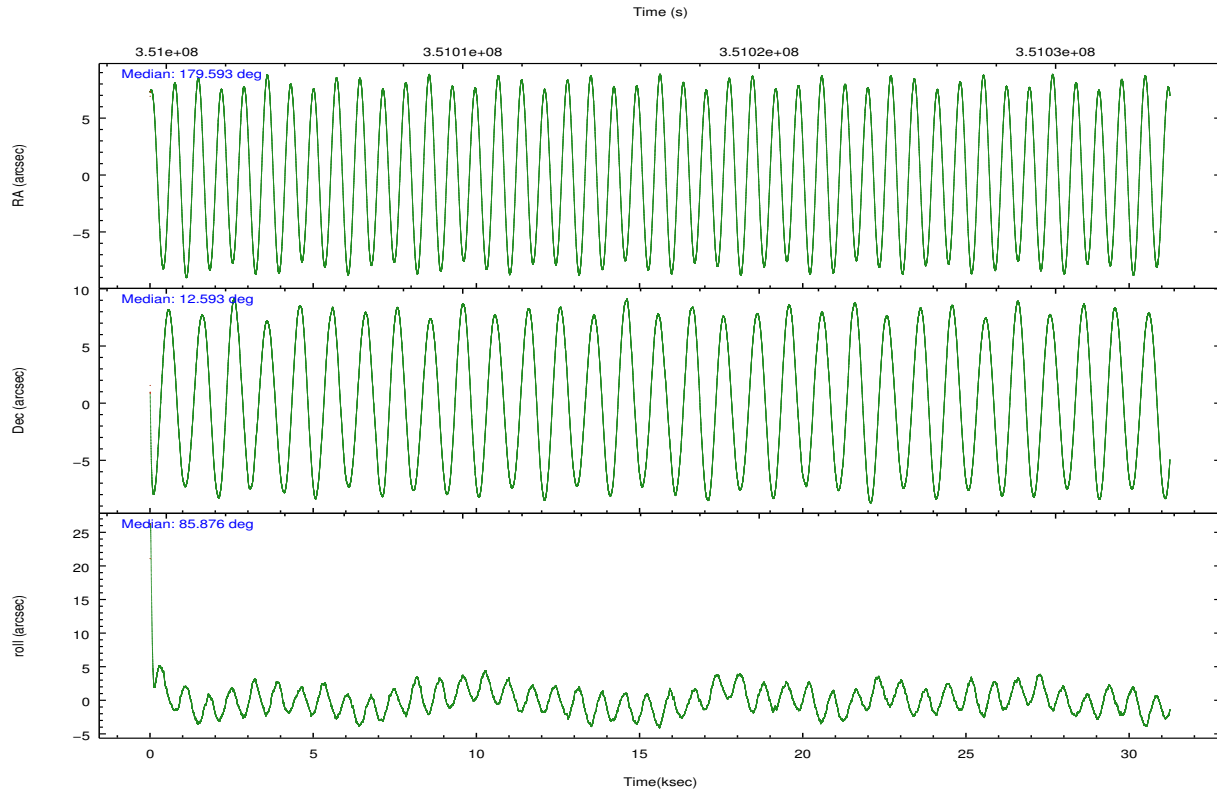
	ccd 2	ccd 3	ccd 5	ccd 6	ccd 7
grade 0 events	9101	8657	24120	9705	13159
	3%	3%	7%	3%	5%
grade 1 events	147	161	684	135	401
	0%	0%	0%	0%	0%
grade 2 events	5972	5172	55339	6012	26577
	2%	2%	16%	2%	10%
grade 3 events	2626	2580	7920	2895	11598
	0%	1%	2%	1%	4%
grade 4 events	2668	2599	6947	2682	11321
	1%	1%	2%	1%	4%
grade 5 events	7231	9049	30917	9004	26569
	2%	3%	8%	3%	10%
grade 6 events	4456	4626	87799	5321	61781
	1%	1%	25%	2%	24%
grade 7 events	232321	214331	130275	224943	101148
	87%	86%	37%	86%	40%

2.2 Compared Parameters

Parameter	Planned	Actual	Parameter	Planned	Actual
Instrument	ACIS	ACIS	Obspar format version number	7	7
Detector	ACIS-23567	ACIS-23567	Obspar file type	PREDICTED	ACTUAL
Grating	NONE	NONE	Obspar update status	NONE	UPDATED
Data mode	VFAINT	VFAINT	CCD I0 on	N	N
Observation mode	POINTING	POINTING	CCD I1 on	N	N
[deg] Pointing RA	179.605268	179.5927055548808	CCD I2 on	O2	Y
[deg] Pointing Dec	12.568365	12.59278420531817	CCD I3 on	O3	Y
[deg] Pointing Roll	85.723385	85.88275950227428	CCD S0 on	N	N
[mm] SIM focus pos	-0.684267	-0.6828225247311905	CCD S1 on	O1	Y
[mm] SIM defocus	0	0.001444936568705701	CCD S2 on	O4	Y
[mm] SIM translation stage pos	-190.132523	-190.1425803651734	CCD S3 on	Y	Y
[mm] SIM translation stage offset	0	0.01005778216563158	CCD S4 on	N	N
[s] Observation start time (MET)	351001173.184000	350999653.28806	CCD S5 on	N	N
Observation start date	2009-02-14T12:18:27	2009-02-14T11:54:13	Number of optional ACIS chips dropped	0	0
[s] Observation end time (MET)	351032273.184000	351033551.57724	On-chip summing requested	N	N
Observation end date	2009-02-14T20:56:47	2009-02-14T21:19:11	Subarray requested	NONE	NONE
Read mode	TIMED	TIMED	Alternating exposures requested	N	N
			[s] Primary exposure time	0.000000	3.1

2.3 Aspect



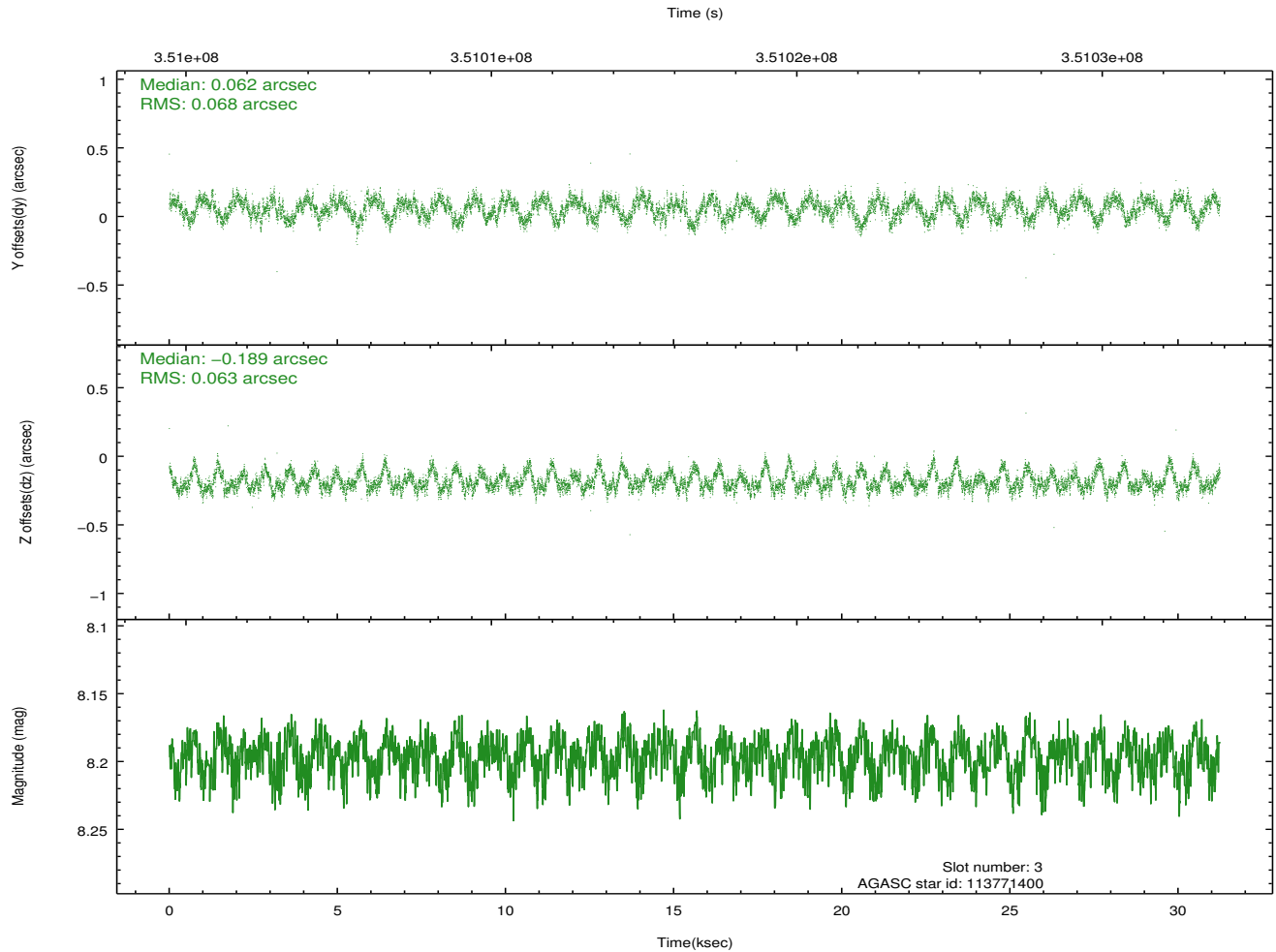
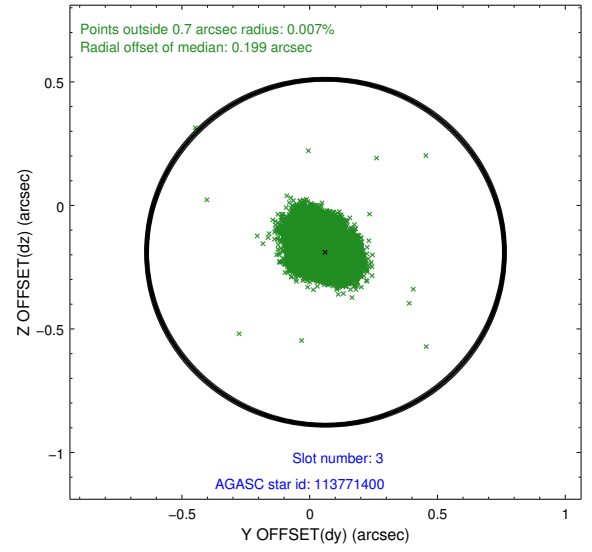
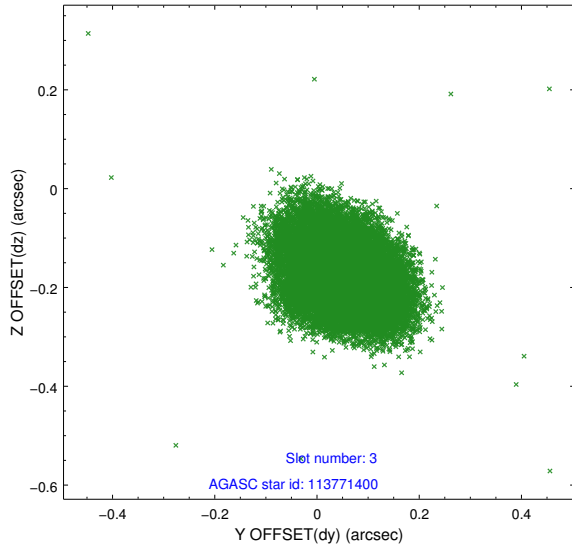


Slot Statistics

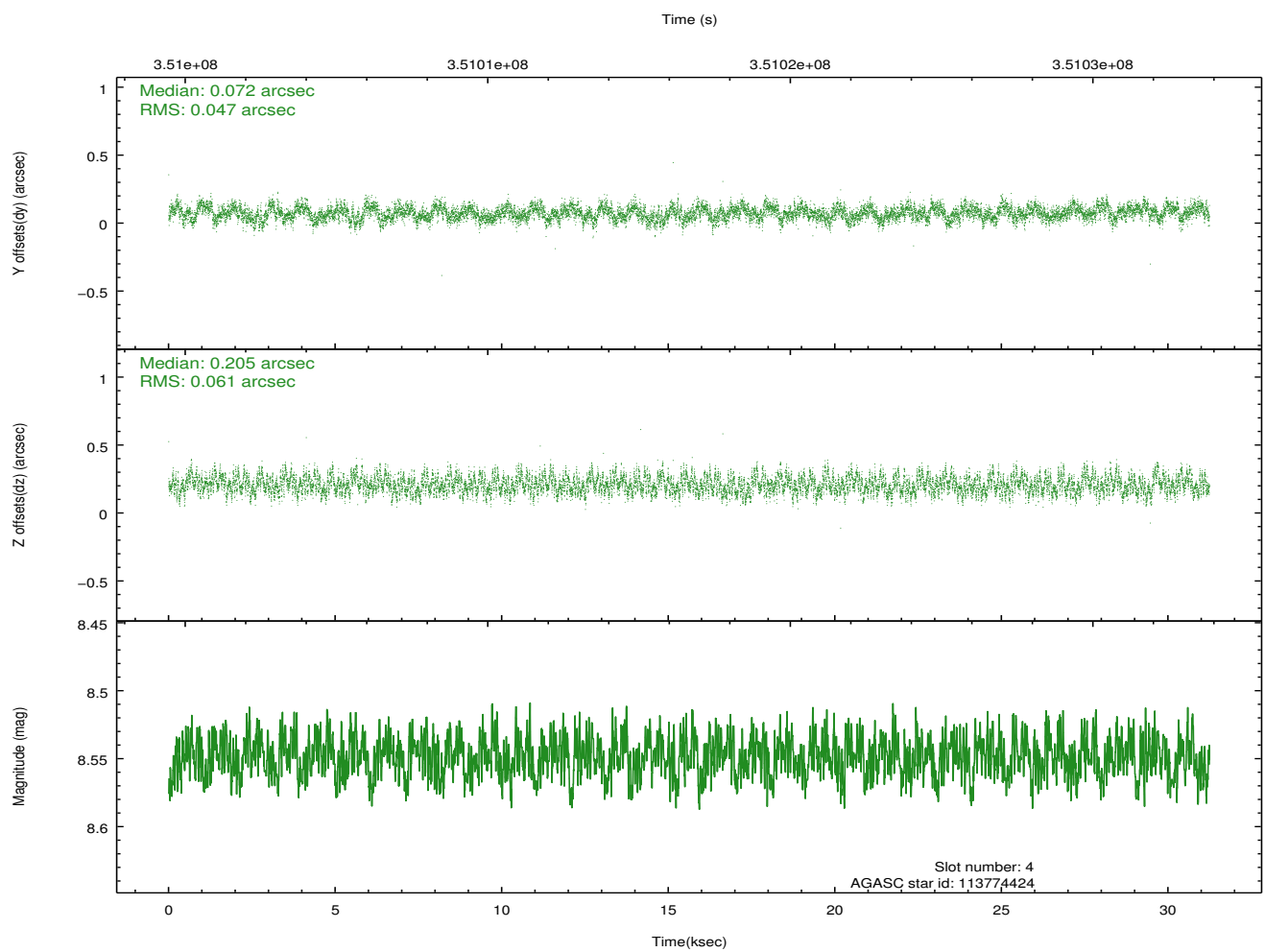
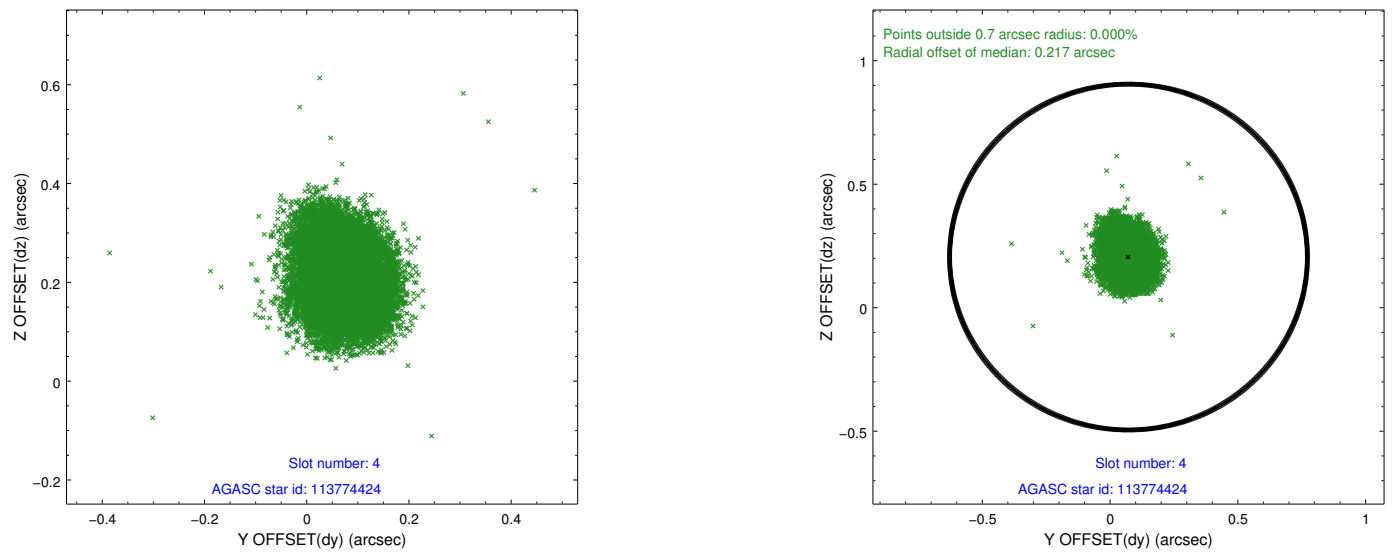
slot	status	id	mag	n_pts	med_dy	med_dz	dr1	dr2	ra	dec	mean_y	mean_z
0	FID	ACIS-S-2	6.92	7621	-0.050	-0.041	0.011	0.020	0.000000	0.000000	-766.77	-1735.39
1	FID	ACIS-S-4	7.01	7619	0.181	0.035	0.013	0.029	0.000000	0.000000	2146.70	173.11
2	FID	ACIS-S-5	7.03	7621	-0.162	0.016	0.008	0.014	0.000000	0.000000	-1819.65	166.83
3	GUIDE	113771400	8.20	15235	0.062	-0.189	0.098	0.157	179.138433	12.348346	-910.96	1578.21
4	GUIDE	113774424	8.55	15236	0.072	0.205	0.082	0.132	180.212073	11.983309	-1938.19	-2287.65
5	GUIDE	114165448	9.22	15219	-0.089	0.065	0.109	0.174	179.845063	12.895463	1237.57	-751.02
6	GUIDE	114169424	8.79	15232	-0.088	0.091	0.098	0.160	180.264599	13.008339	1755.47	-2187.50
7	GUIDE	113773824	9.10	15225	0.050	-0.188	0.133	0.194	179.213976	12.244802	-1262.94	1285.78

2.4 Star Slots

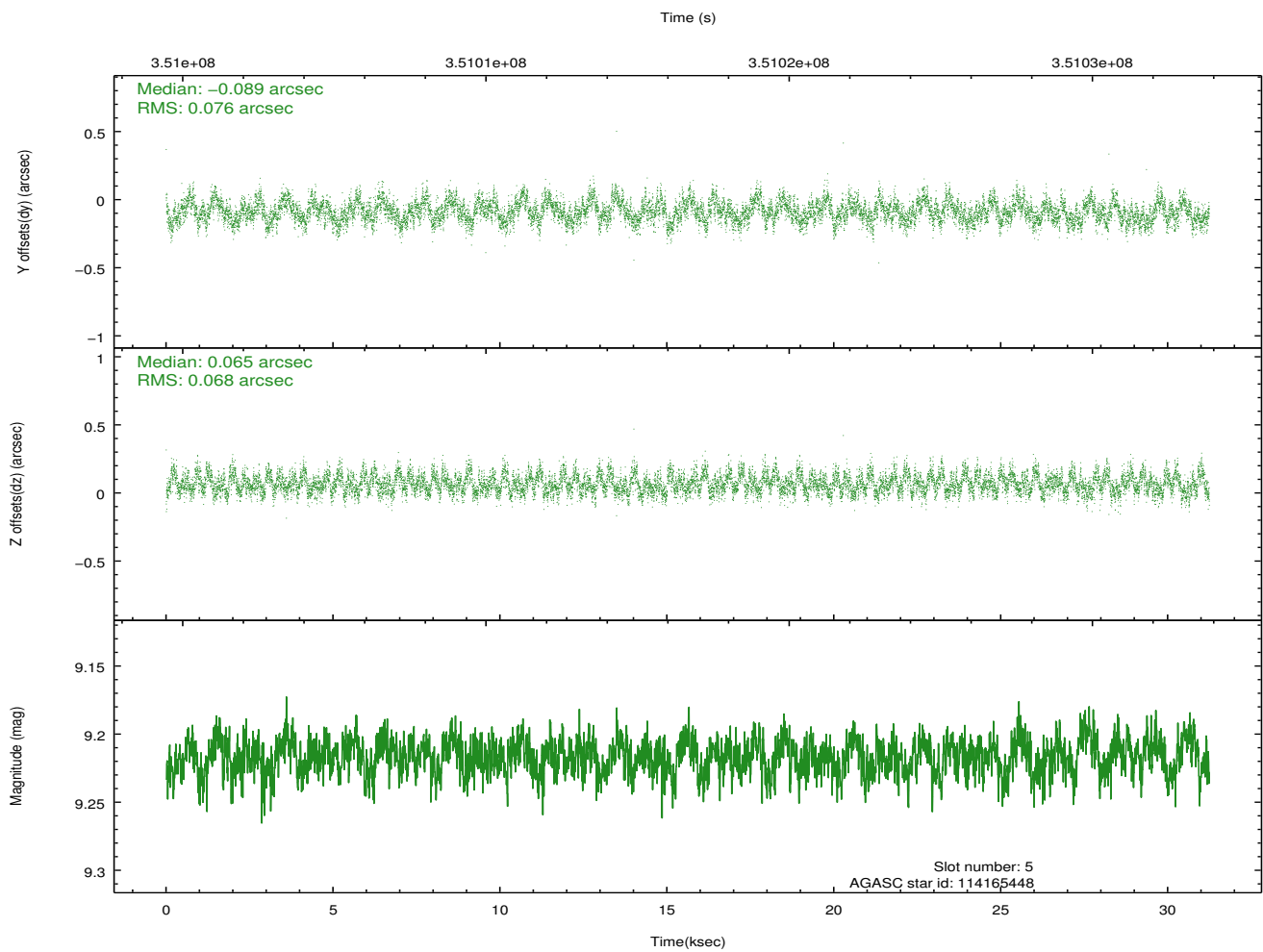
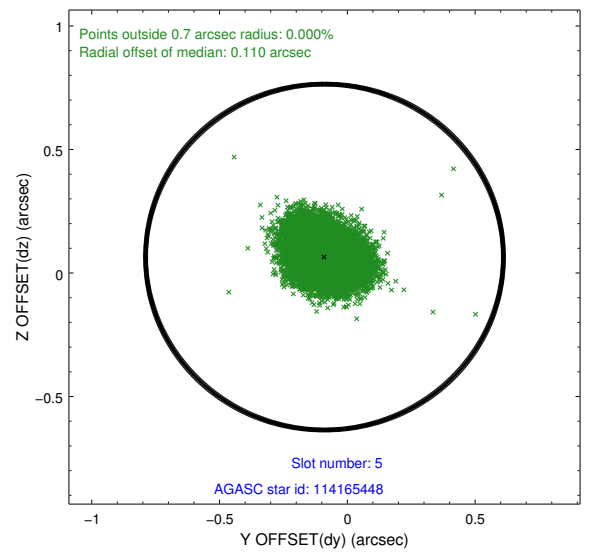
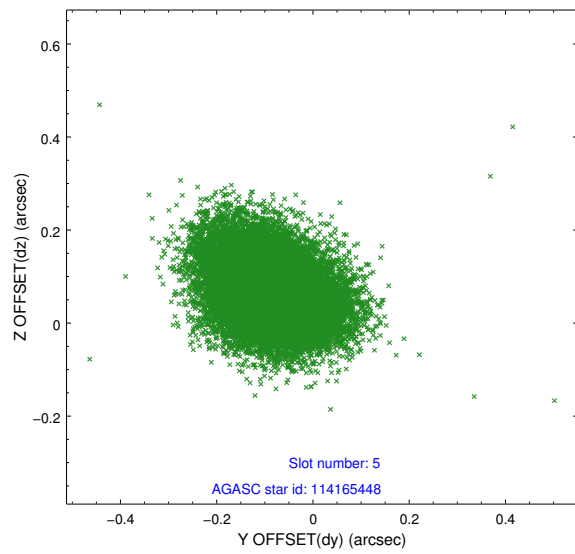
2.4.1 Slot 3



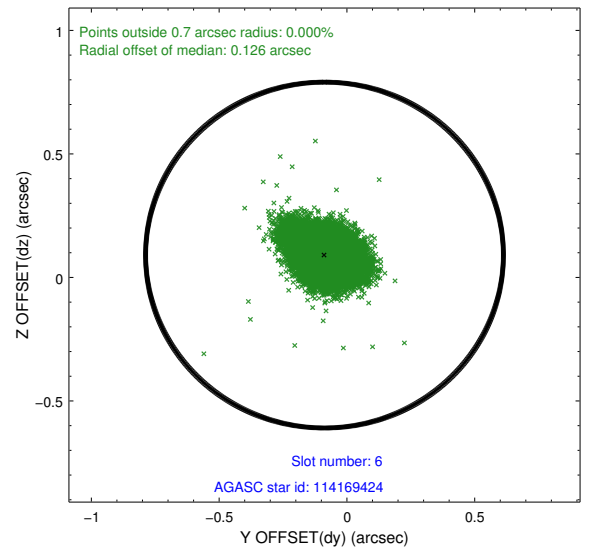
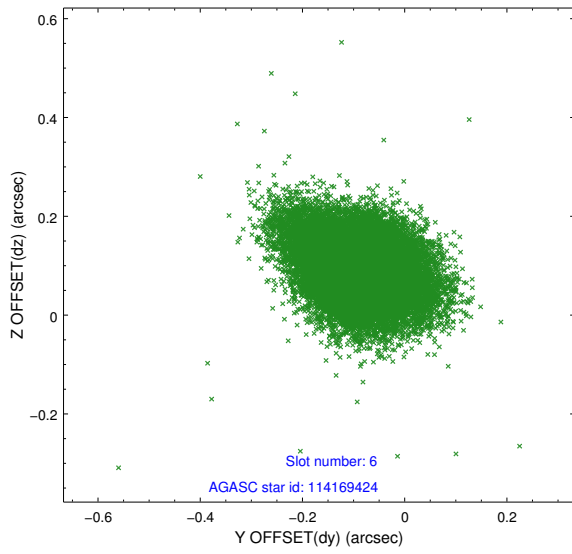
2.4.2 Slot 4



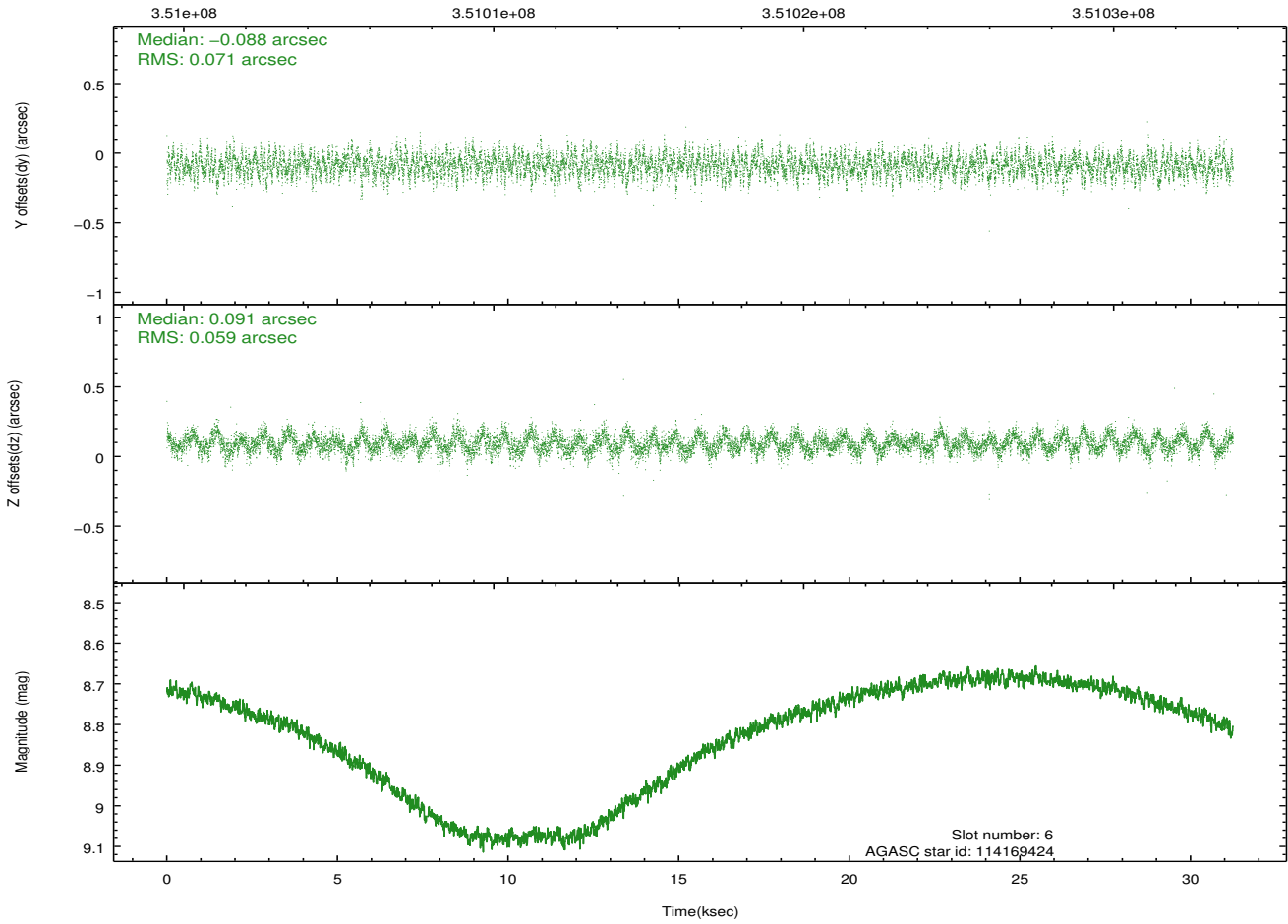
2.4.3 Slot 5



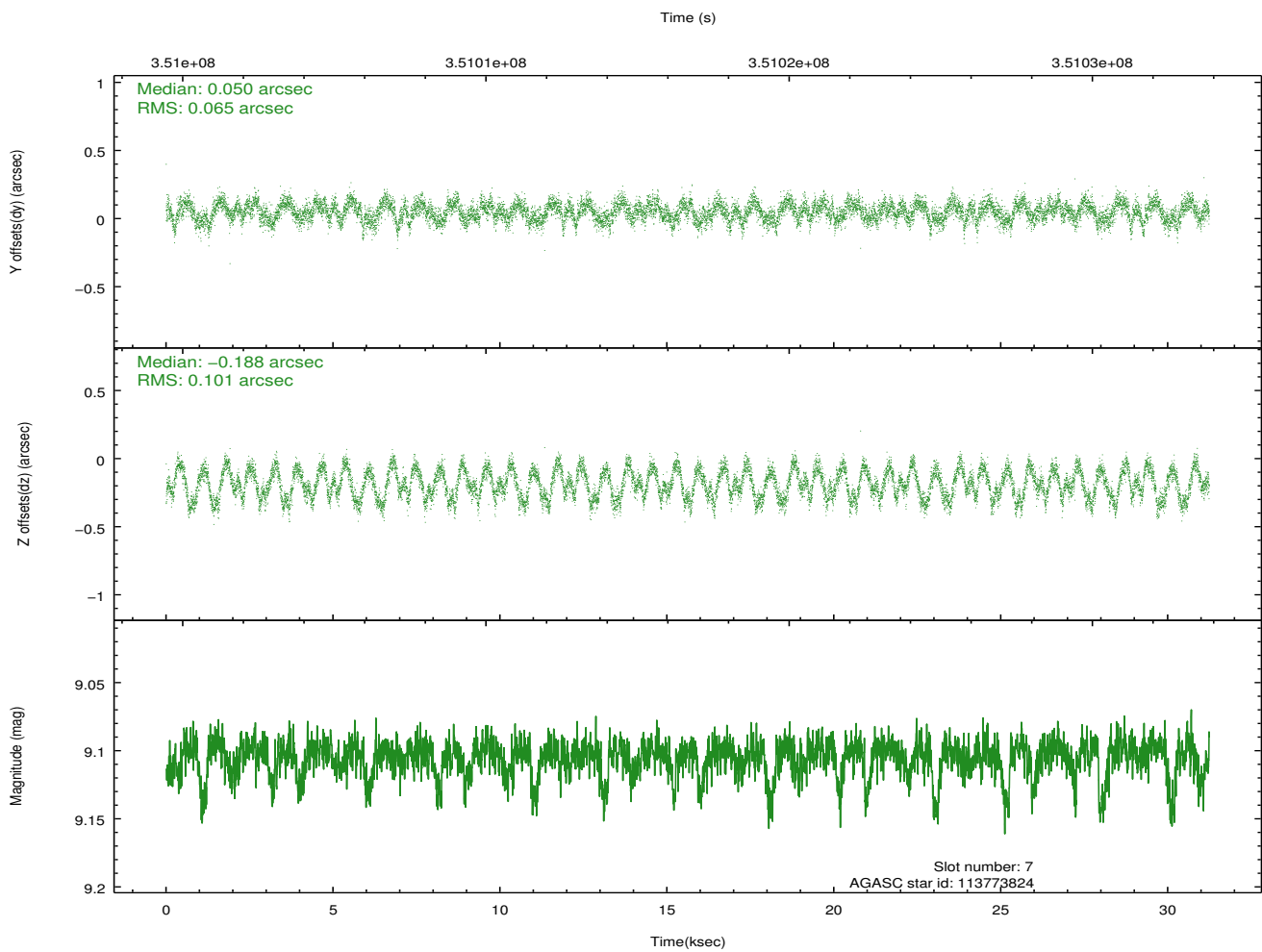
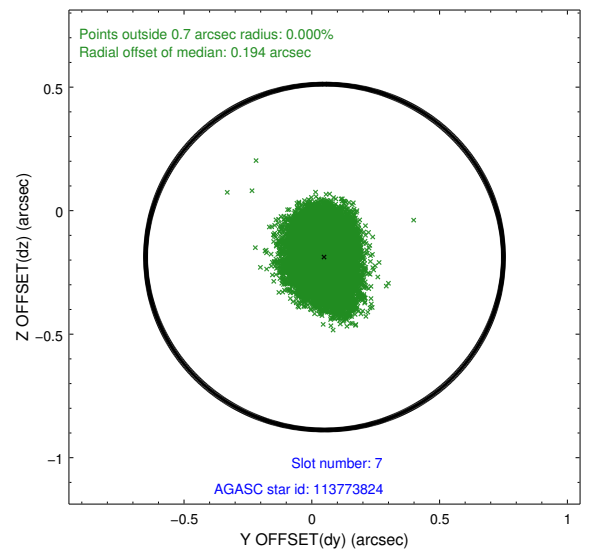
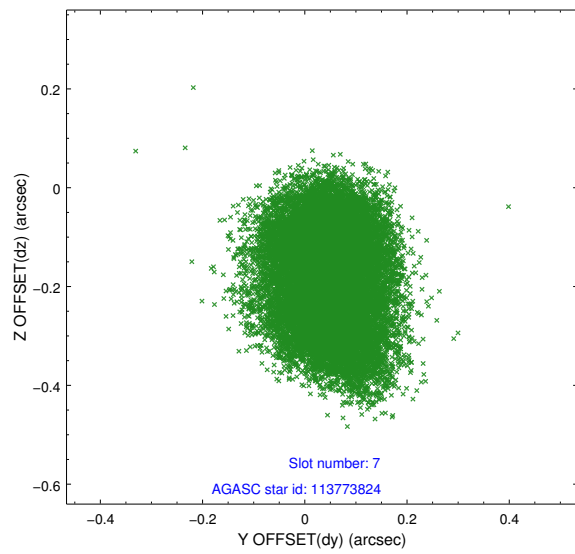
2.4.4 Slot 6



Time (s)

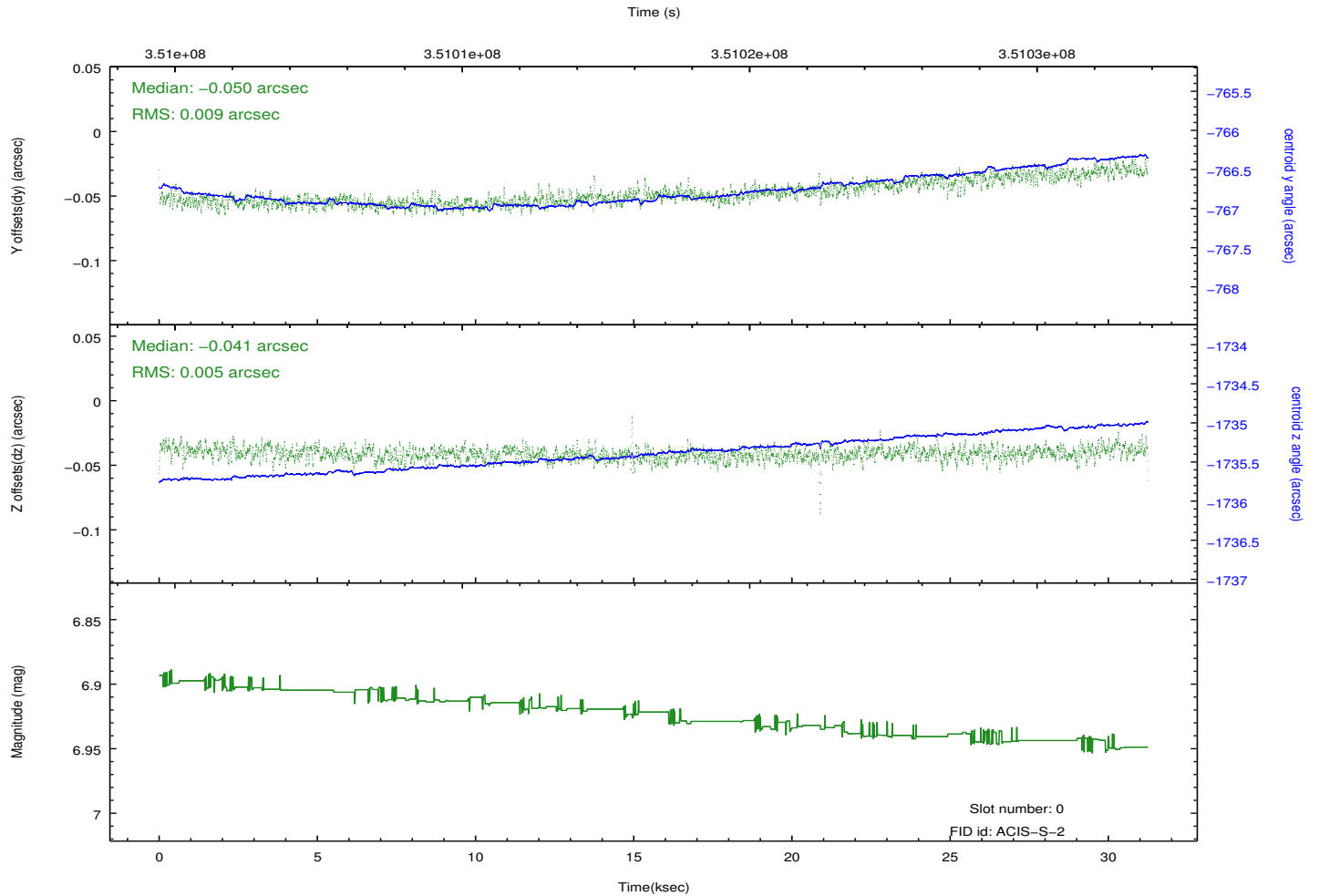
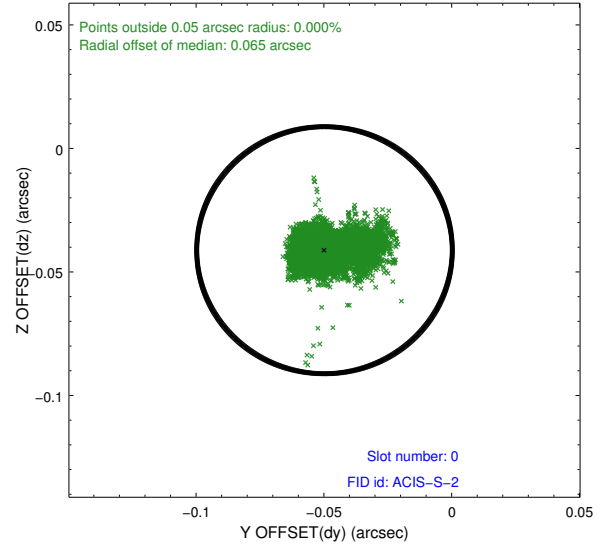
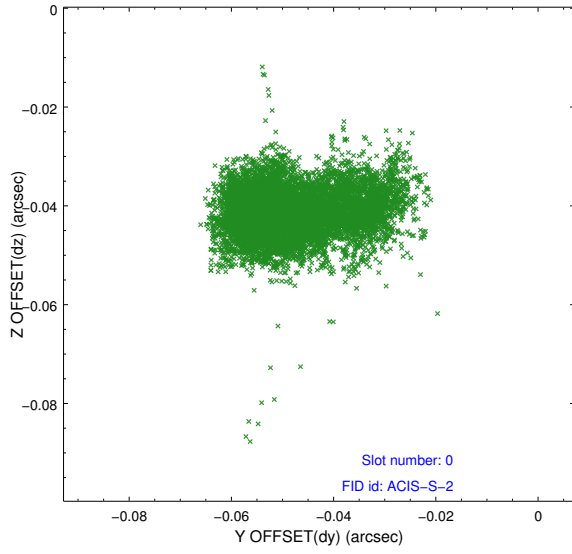


2.4.5 Slot 7

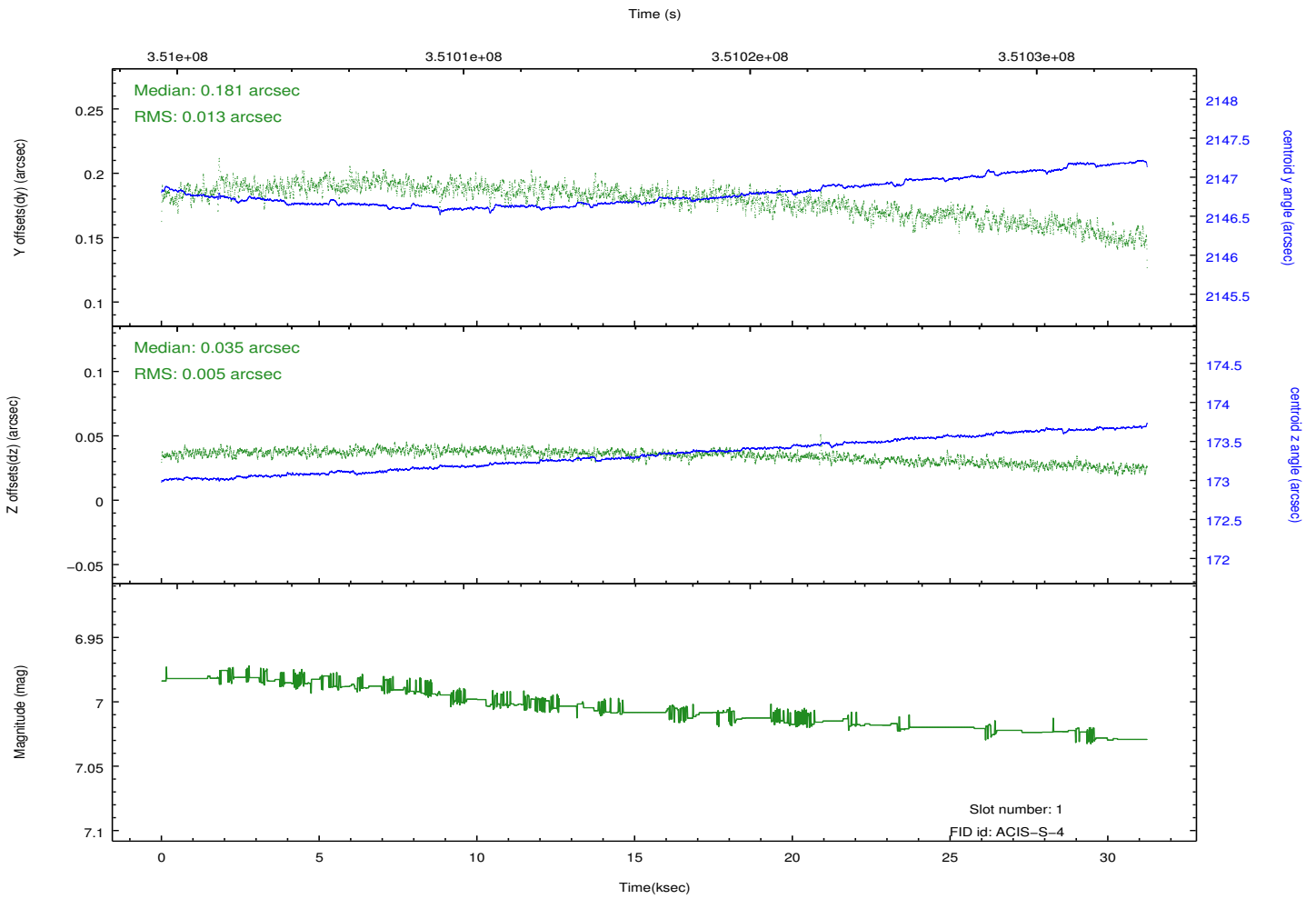
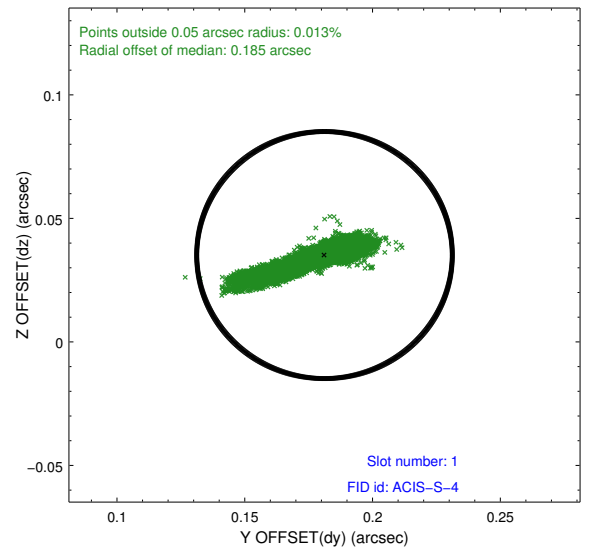
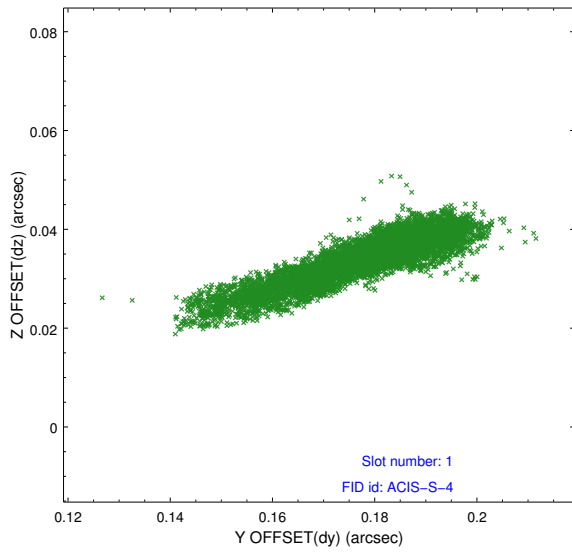


2.5 FID Slots

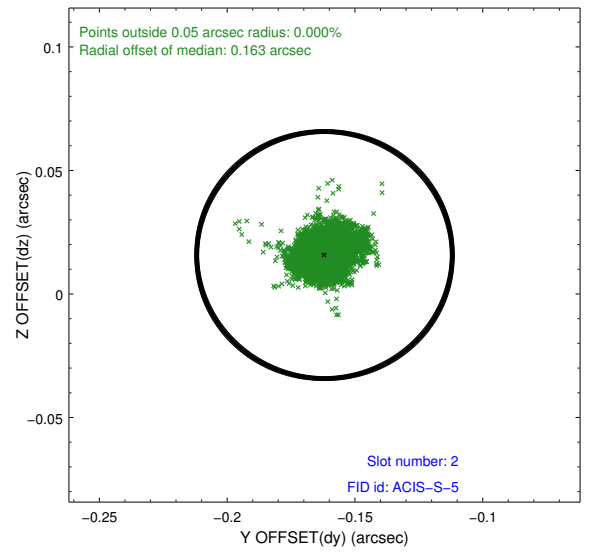
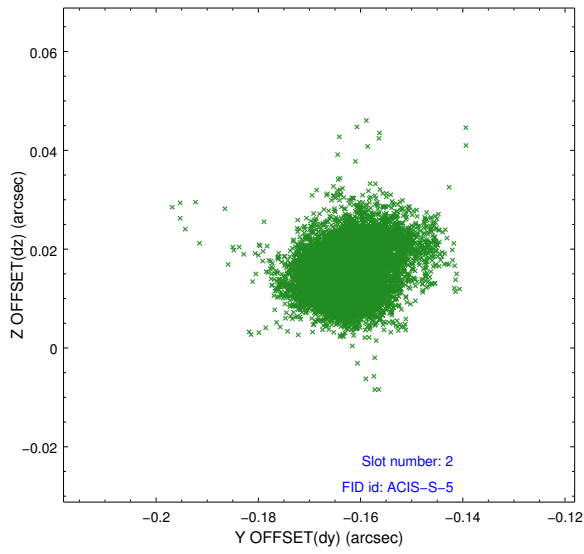
2.5.1 Slot 0



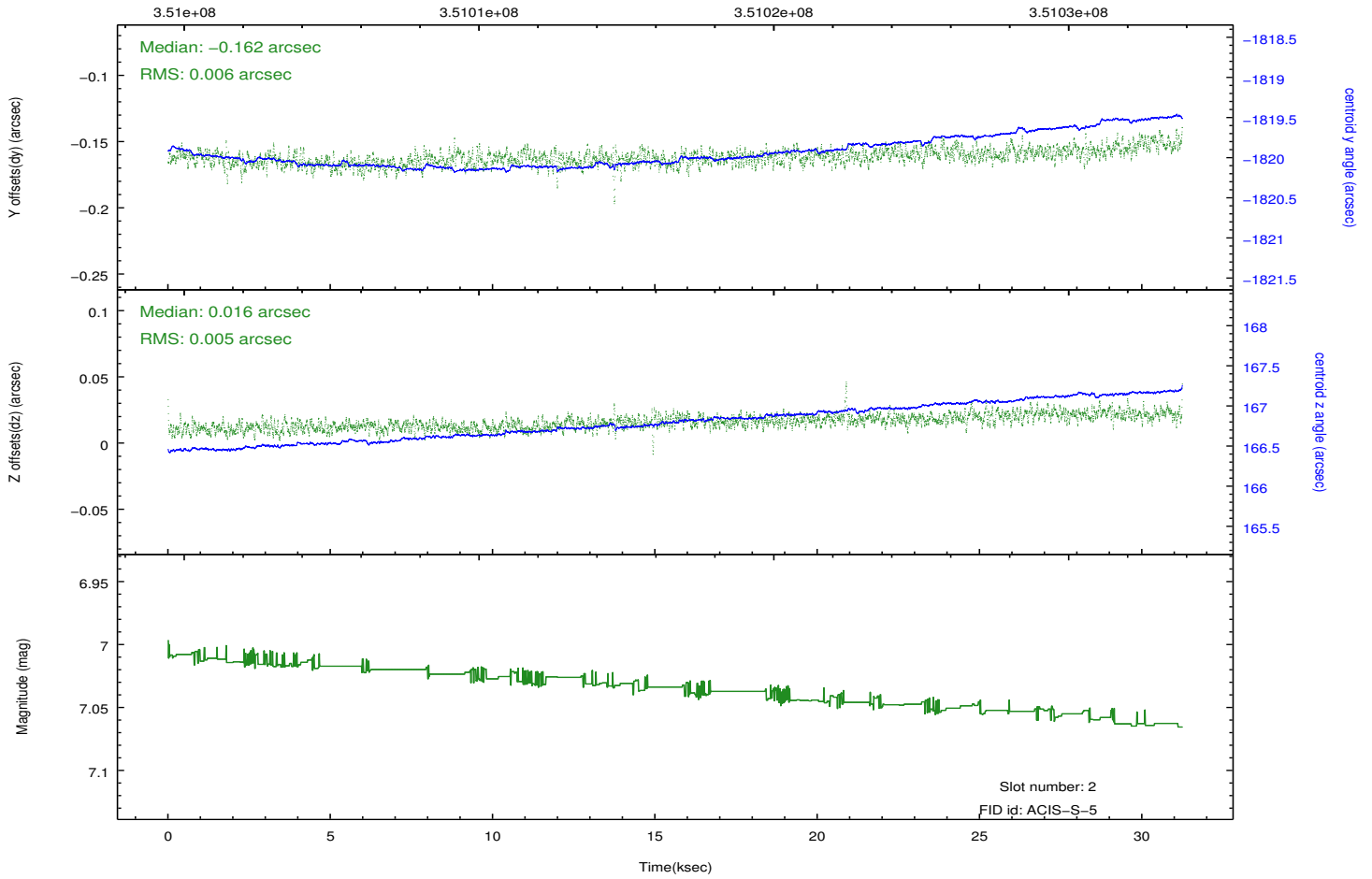
2.5.2 Slot 1



2.5.3 Slot 2



Time (s)



A Summary

A.1 Status

V&V Scientist	Jen Lauer
V&V Date (YYYY-MM-DD)	2012.06.05
V&V Edition	1
V&V Disposition and Status	OK
V&V Charge Time	31.2356002

A.2 Comments

Joint Proposal: NOAO