

V&V Reference Report

L2 ASCDS Version : 8.4.5

Observation 1044 - L2 Version 3
Chandra X-Ray Center

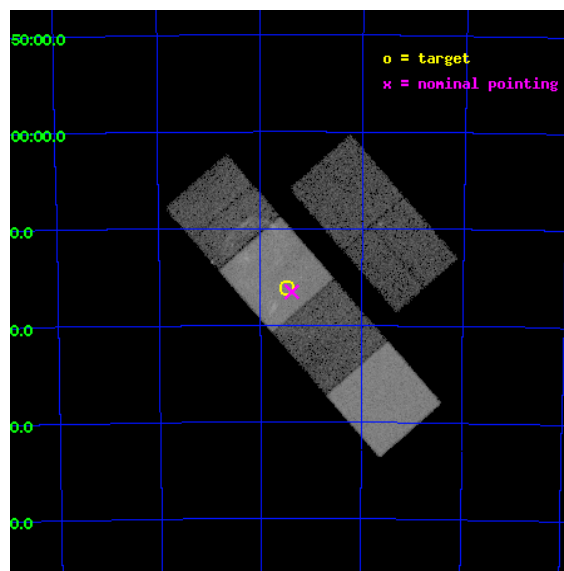
L2 Processing Date : Sep 15 2012

Contents

1	Front	2
2	OBI	3
2.1	OBI	3
2.1.1	Images	3
2.1.2	Bias	3
2.1.3	Parameters	4
2.1.4	Events	4
2.2	Compared Parameters	5
2.3	Aspect	6
2.4	Star Slots	9
2.4.1	Slot 3	9
2.4.2	Slot 4	10
2.4.3	Slot 5	11
2.4.4	Slot 6	12
2.4.5	Slot 7	13
2.5	FID Slots	14
2.5.1	Slot 0	14
2.5.2	Slot 1	15
2.5.3	Slot 2	16
A	Summary	17
A.1	Status	17
A.2	Comments	17

1 Front

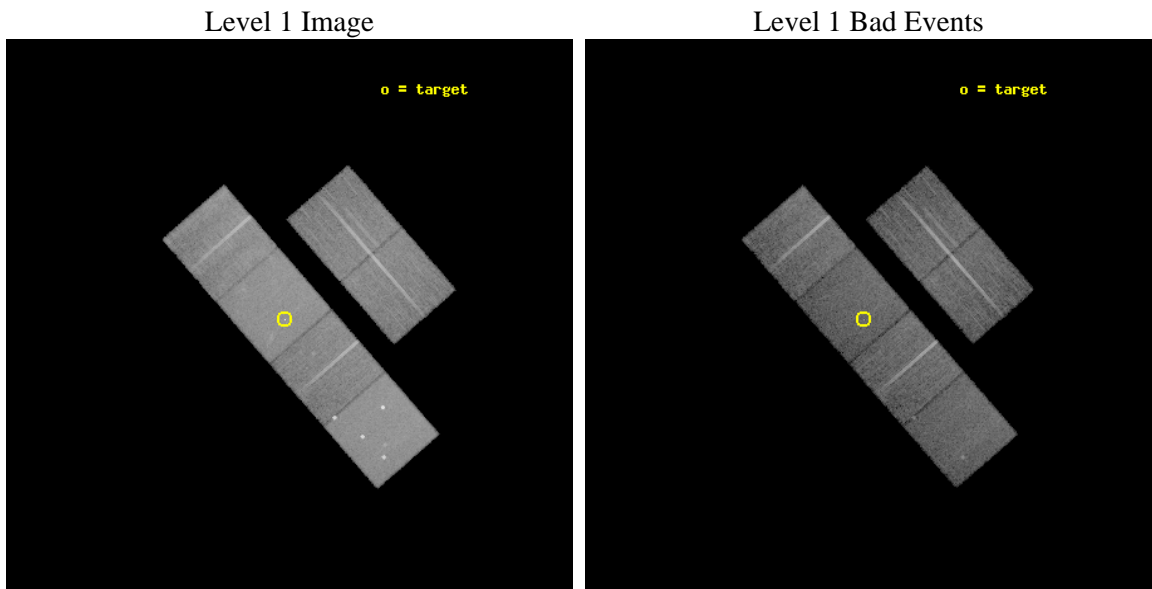
seq_num	500110	Sequence number
obs_id	1044	Observation id
title	SN1987A MONITORING	Proposal title
observer	Professor Gordon Garmire	Principal investigator
object	SN1987A	Source name
dtcycle	0	
cycle	P	events from which exps? Prim/Second/Both
ra_targ	83.867083	Observer's specified target RA [deg]
dec_targ	-69.269667	Observer's specified target Dec [deg]
ra_nom	83.845496744034	Nominal RA [deg]
dec_nom	-69.275762719248	Nominal Dec [deg]
roll_nom	228.89030019033	Nominal Roll [deg]
revision	3	Processing version of data
ontime	18006.400016755	Sum of GTIs [s]
livetime	17778.39213759	Livetime [s]
ontime2	18006.400016755	Sum of GTIs [s]
ontime3	18006.400016755	Sum of GTIs [s]
ontime5	18006.400016755	Sum of GTIs [s]
ontime6	18006.400016755	Sum of GTIs [s]
ontime7	18006.400016755	Sum of GTIs [s]
ontime8	18006.400016755	Sum of GTIs [s]
l2events	218834	Number of level 2 events



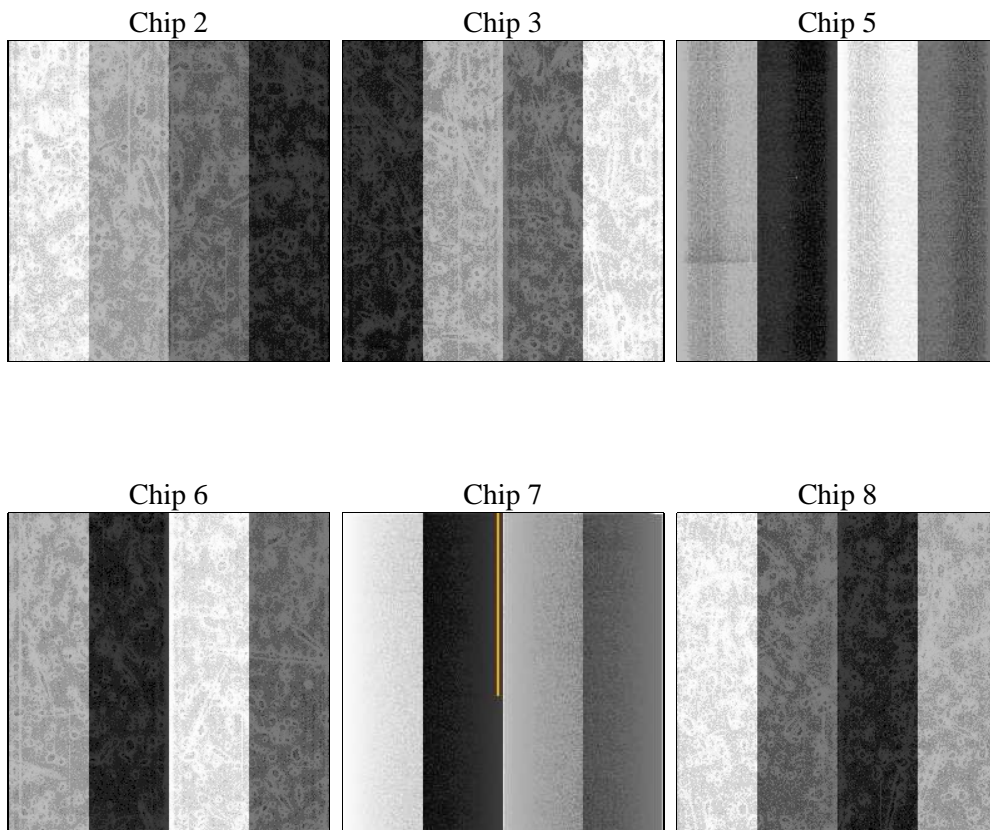
2 OBI

2.1 OBI

2.1.1 Images



2.1.2 Bias



2.1.3 Parameters

obi_num	1	Obi number	sched_exp_time	18097.236000	[s] Scheduled observation exposure time
ascdsver	8.4.5	Processing system revision	ontime	18006.400016755	Sum of GTIs [s]
caldsver	4.5.1.1	 	ontime2	18006.400016755	Sum of GTIs [s]
date	2012-09-15T17:32:42	Date and time of file creation	ontime3	18006.400016755	Sum of GTIs [s]
revision	3	Processing version of data	ontime5	18006.400016755	Sum of GTIs [s]
			ontime6	18006.400016755	Sum of GTIs [s]
			ontime7	18006.400016755	Sum of GTIs [s]
			ontime8	18006.400016755	Sum of GTIs [s]
			l1events	858011	Number of level 1 events

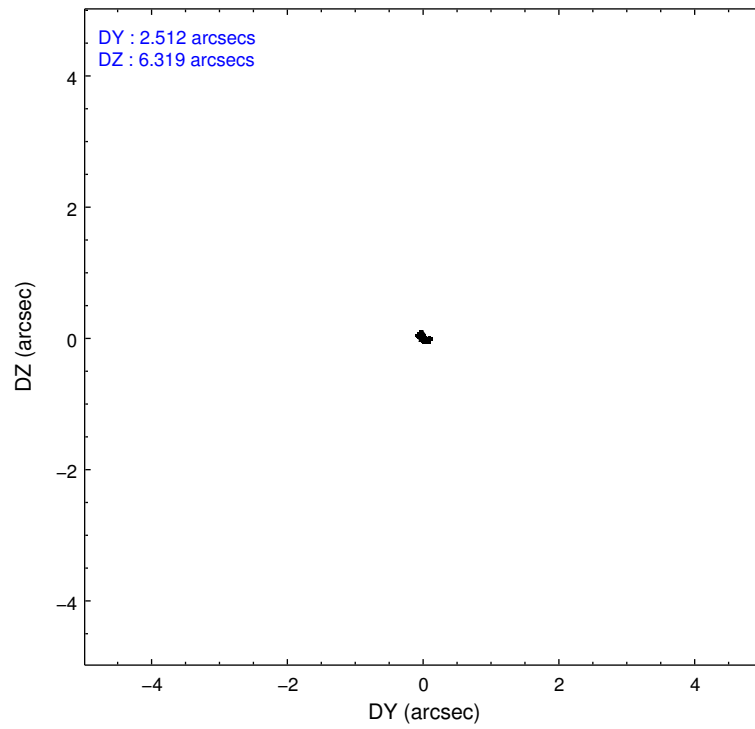
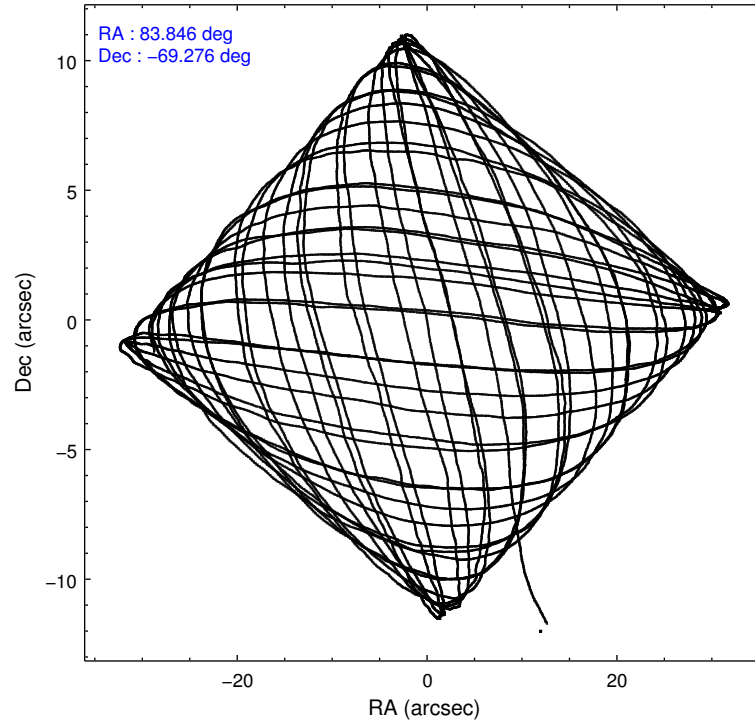
2.1.4 Events

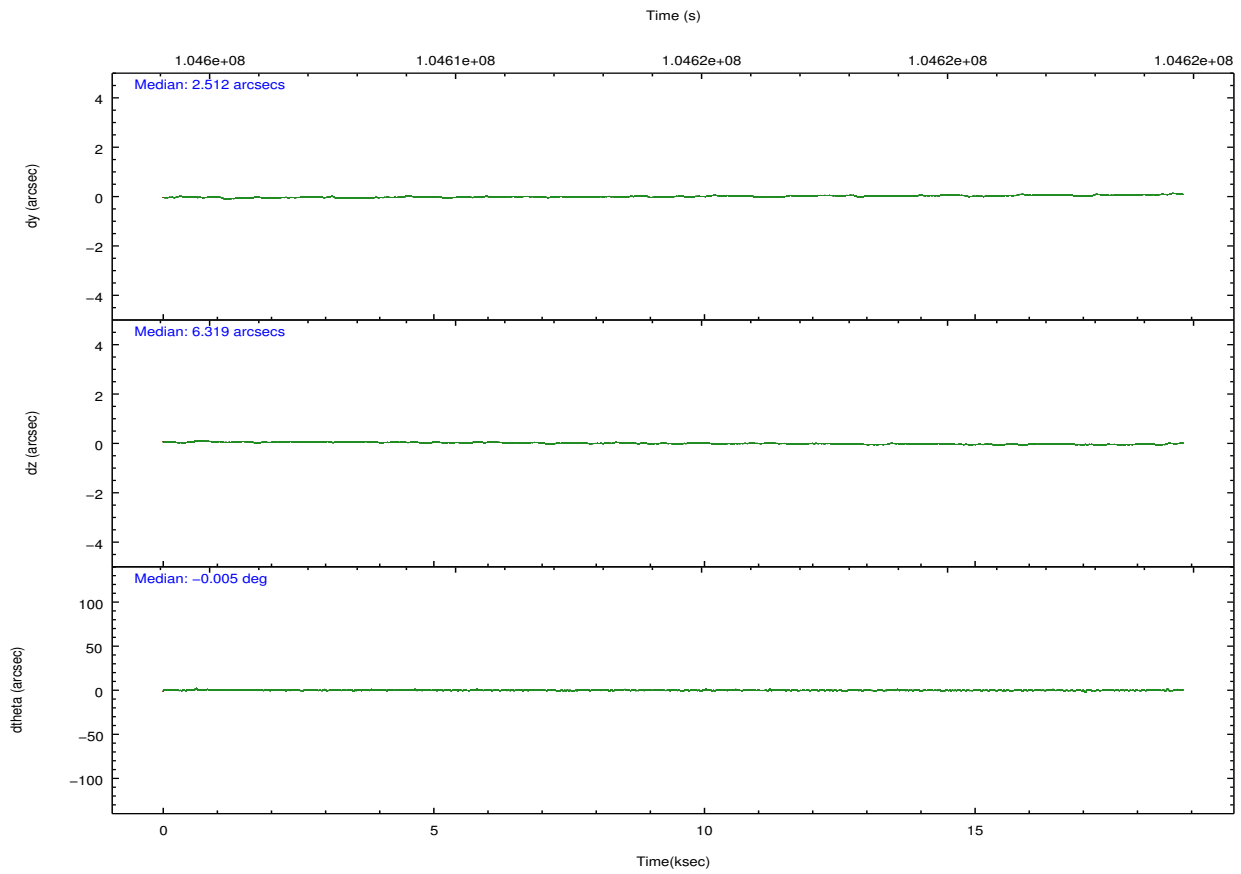
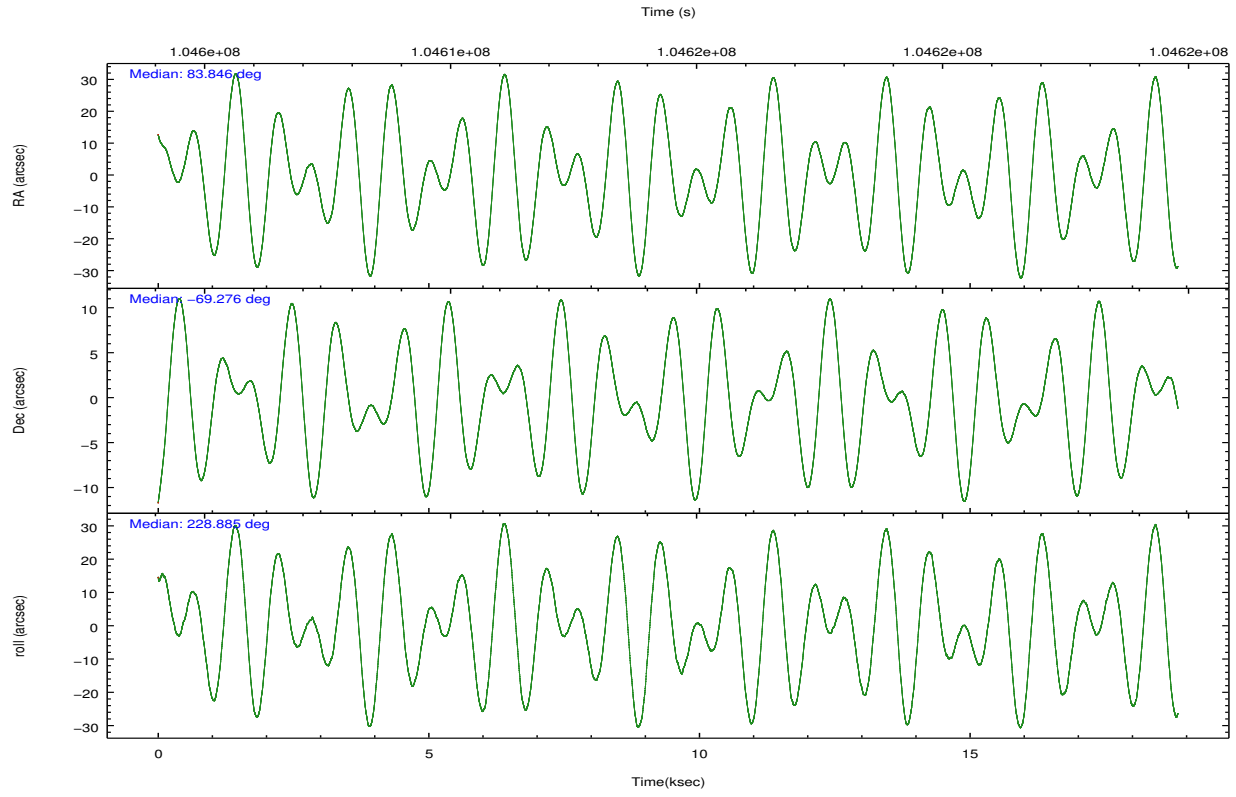
	ccd 2	ccd 3	ccd 5	ccd 6	ccd 7	ccd 8		ccd 2	ccd 3	ccd 5	ccd 6	ccd 7	ccd 8
level 1 events	120629	116242	181209	121600	167222	151109	grade 0 events	7388	6776	20126	9781	11620	14123
rejected events	105424	102019	87935	103548	85608	116839		6%	5%	11%	8%	6%	9%
rejected %	87%	87%	48%	85%	51%	77%	grade 1 events	57	55	609	62	164	117
								0%	0%	0%	0%	0%	0%
							grade 2 events	3002	2657	24510	2922	17190	6563
								2%	2%	13%	2%	10%	4%
							grade 3 events	1322	1309	4211	1450	7677	3258
								1%	1%	2%	1%	4%	2%
							grade 4 events	1259	1216	4213	1295	7840	3103
								1%	1%	2%	1%	4%	2%
							grade 5 events	4033	4370	12431	4815	14260	6119
								3%	3%	6%	3%	8%	4%
							grade 6 events	2244	2271	40245	2610	37313	7231
								1%	1%	22%	2%	22%	4%
							grade 7 events	101324	97588	74864	98665	71158	110595
								83%	83%	41%	81%	42%	73%

2.2 Compared Parameters

Parameter	Planned	Actual	Parameter	Planned	Actual
Instrument	ACIS	ACIS	Obspar format version number	7	7
Detector	ACIS-235678	ACIS-235678	Obspar file type	PREDICTED	ACTUAL
Grating	NONE	NONE	Obspar update status	NONE	UPDATED
Data mode	FAINT	FAINT	Number of optional ACIS chips dropped	0	0
Observation mode	POINTING	POINTING	On-chip summing requested	N	N
[deg] Pointing RA	83.859589	83.84549674403416	Subarray requested	NONE	NONE
[deg] Pointing Dec	-69.248936	-69.27576271924823	Alternating exposures requested	N	N
[deg] Pointing Roll	228.746857	228.8903001903333	[s] Primary exposure time	0.000000	3.2
[s] Window start time (MET)	103852864.184000	103852864.184000			
[s] Window stop time (MET)	109123264.184000	109123264.184000			
[mm] SIM focus pos	-0.684267	-0.6828225247311905			
[mm] SIM defocus	0	0.001444936568705701			
[mm] SIM translation stage pos	-190.132523	-190.1425803651734			
[mm] SIM translation stage offset	0	0.01005778216563158			
[s] Observation start time (MET)	104605744.184000	104604508.54621			
Observation start date	2001-04-25T17:08:00	2001-04-25T16:48:28			
[s] Observation end time (MET)	104623841.184000	104624155.23448			
Observation end date	2001-04-25T22:09:37	2001-04-25T22:15:55			
Read mode	TIMED	TIMED			

2.3 Aspect



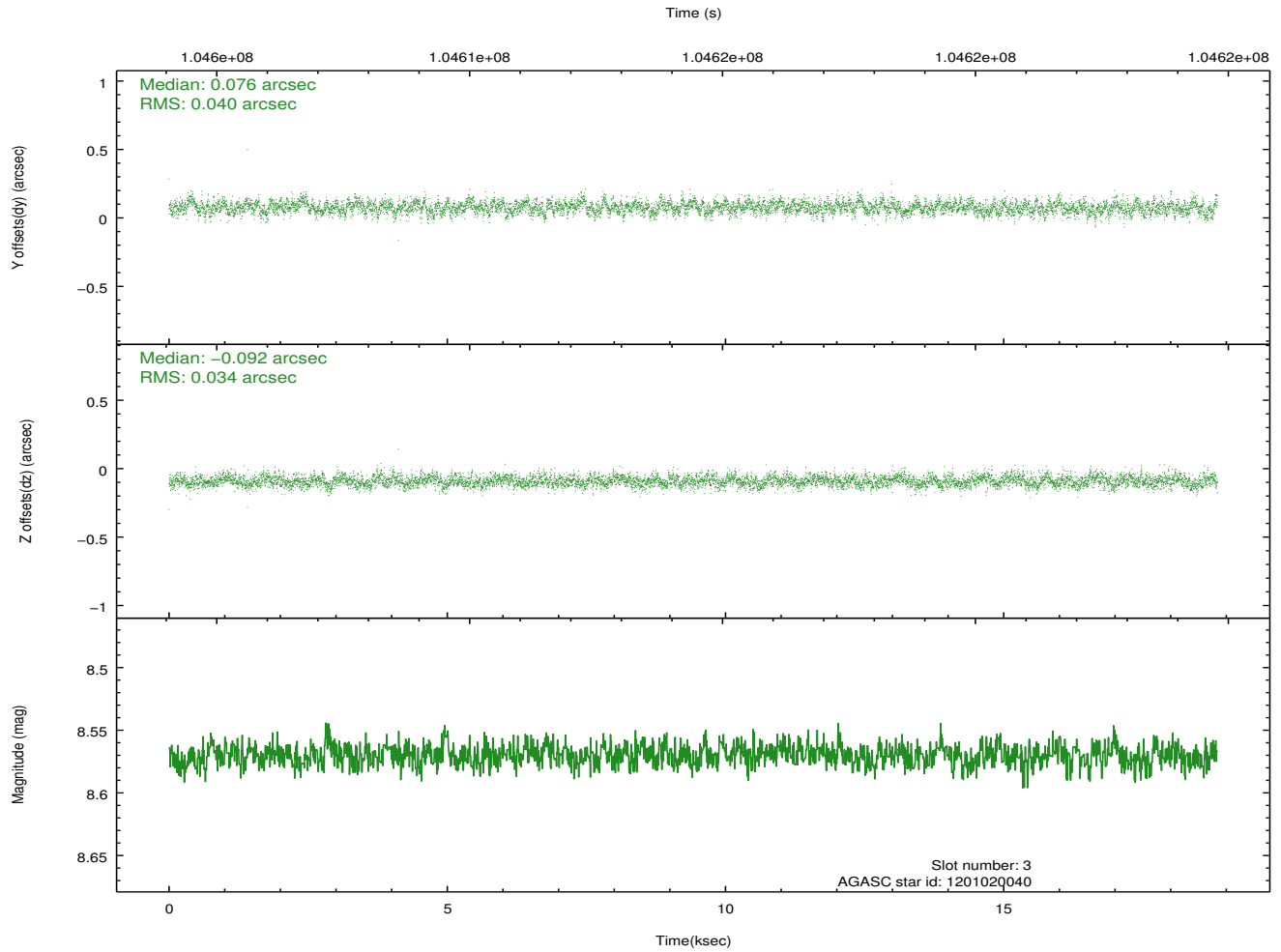
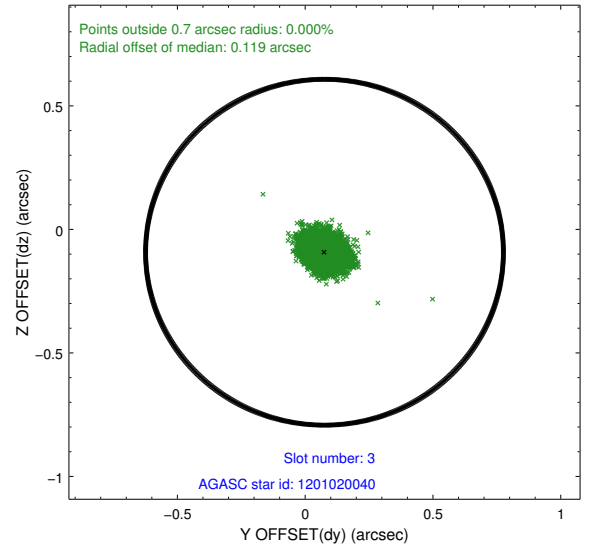
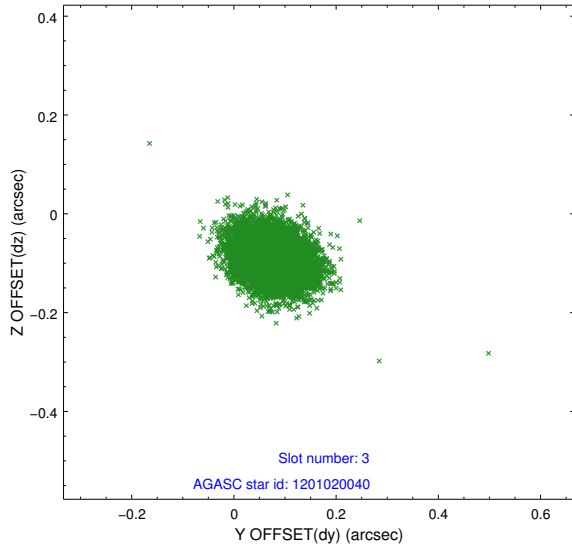


Slot Statistics

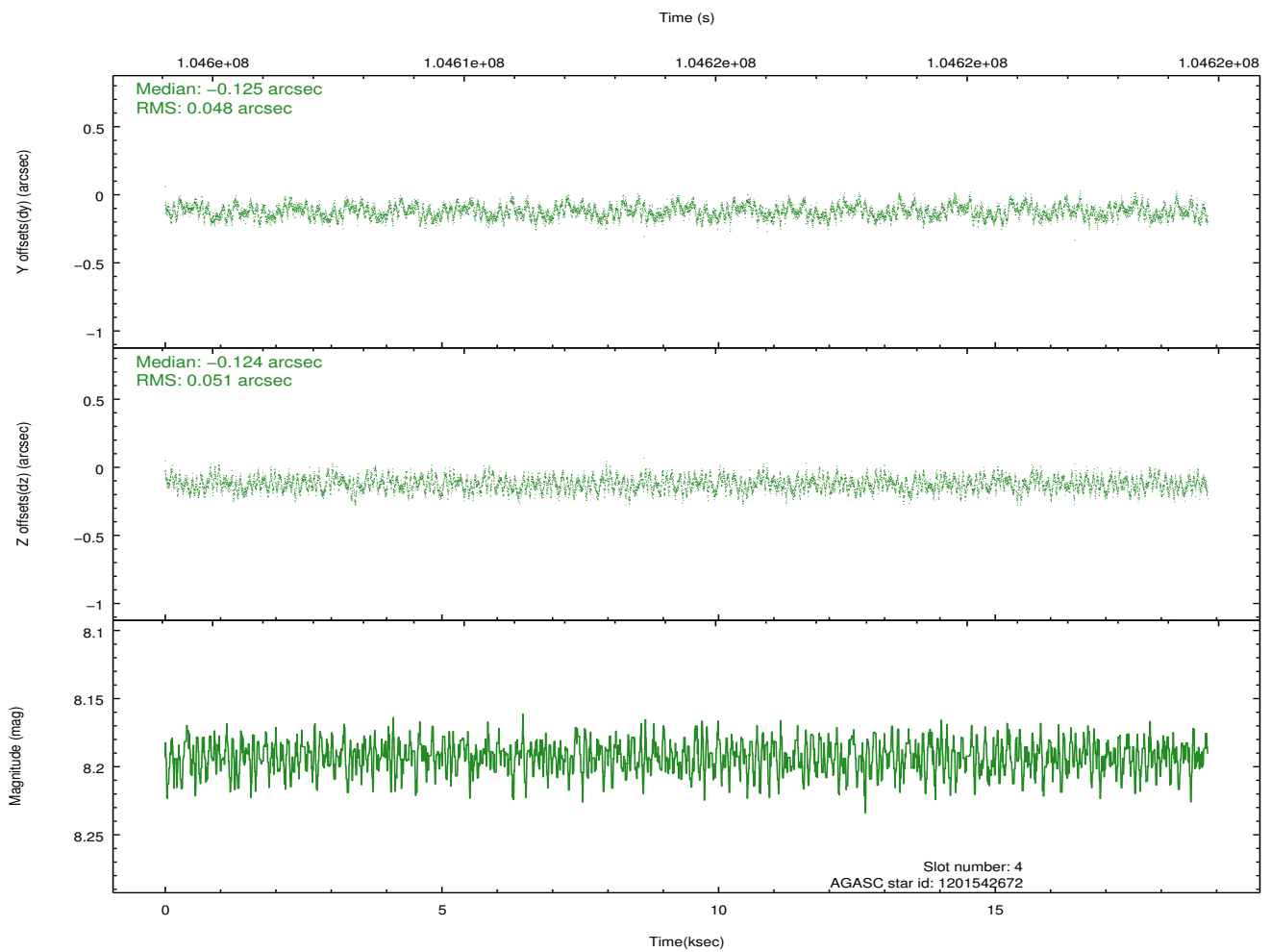
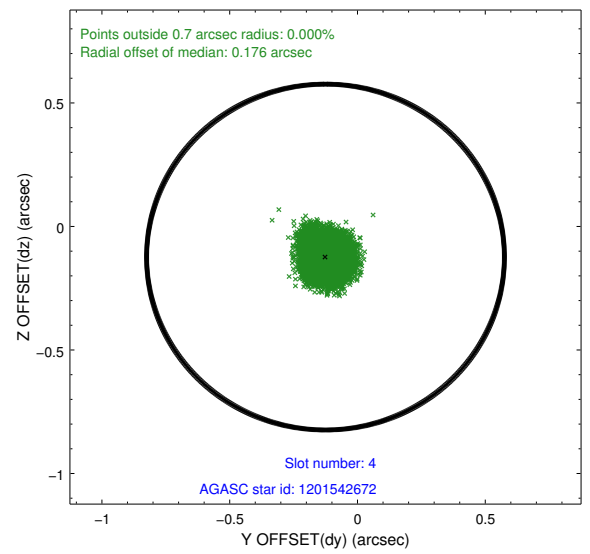
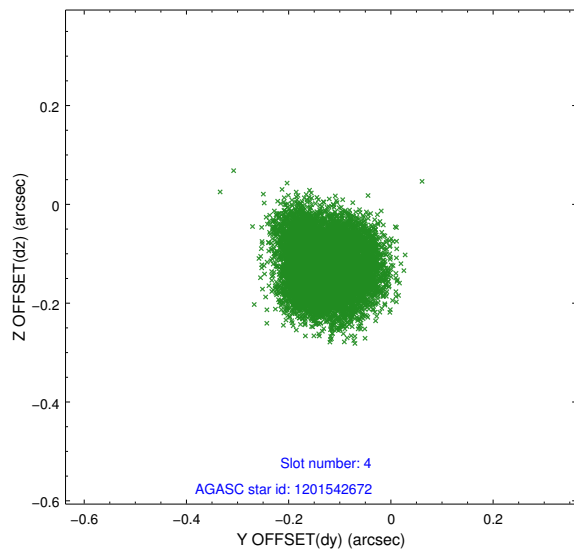
slot	status	id	mag	n_pts	med_dy	med_dz	dr1	dr2	ra	dec	mean_y	mean_z
0	FID	ACIS-S-2	7.11	4596	-0.031	-0.001	0.007	0.010	0.000000	0.000000	-755.14	-1727.44
1	FID	ACIS-S-4	7.20	4596	-0.030	0.015	0.005	0.010	0.000000	0.000000	2158.00	180.90
2	FID	ACIS-S-5	7.24	4595	0.029	-0.005	0.006	0.011	0.000000	0.000000	-1807.69	174.72
3	GUIDE	1201020040	8.57	9192	0.076	-0.092	0.055	0.091	85.379163	-68.879396	-2281.67	620.00
4	GUIDE	1201542672	8.19	9192	-0.125	-0.124	0.075	0.117	84.492488	-69.957531	1404.97	2271.40
5	GUIDE	1201017288	9.73	9190	0.121	0.092	0.105	0.171	84.358094	-68.728983	-1834.45	-743.30
6	GUIDE	1200883536	9.87	9185	0.031	0.016	0.093	0.154	83.119228	-69.218429	544.97	-779.96
7	GUIDE	1200887248	9.66	9186	-0.108	0.113	0.114	0.185	82.362845	-68.868028	267.60	-2349.23

2.4 Star Slots

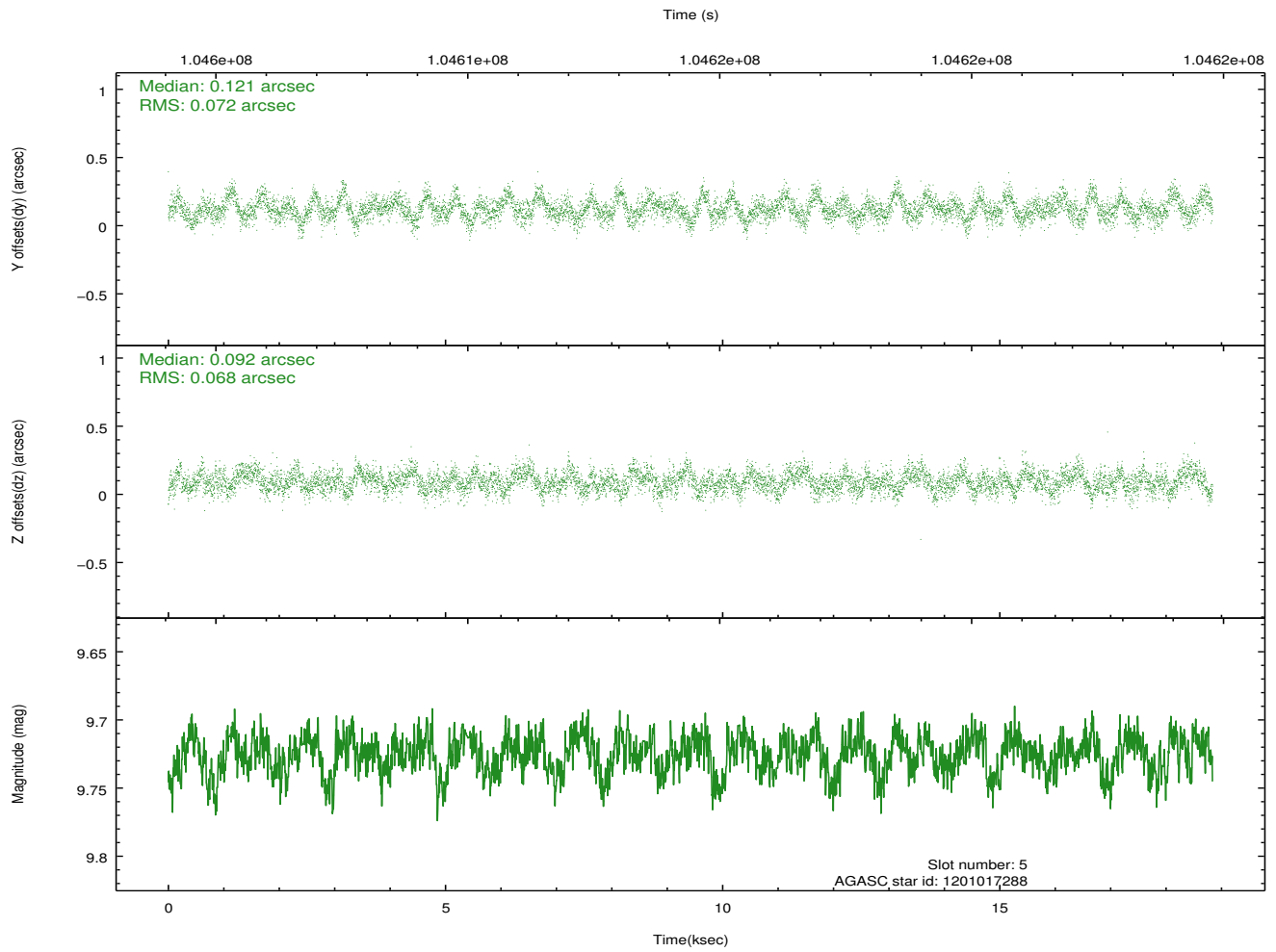
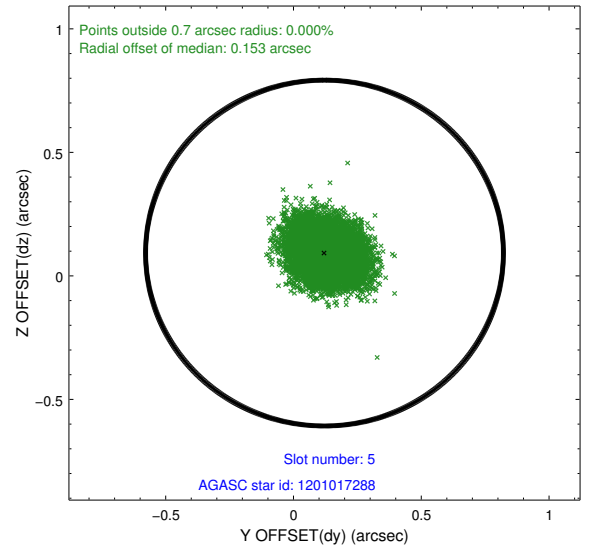
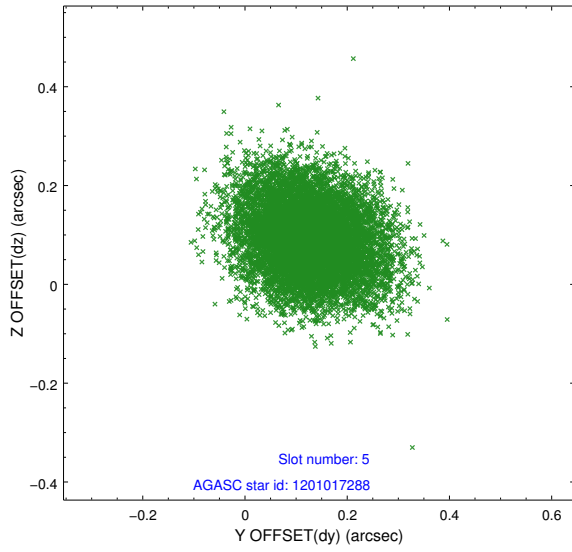
2.4.1 Slot 3



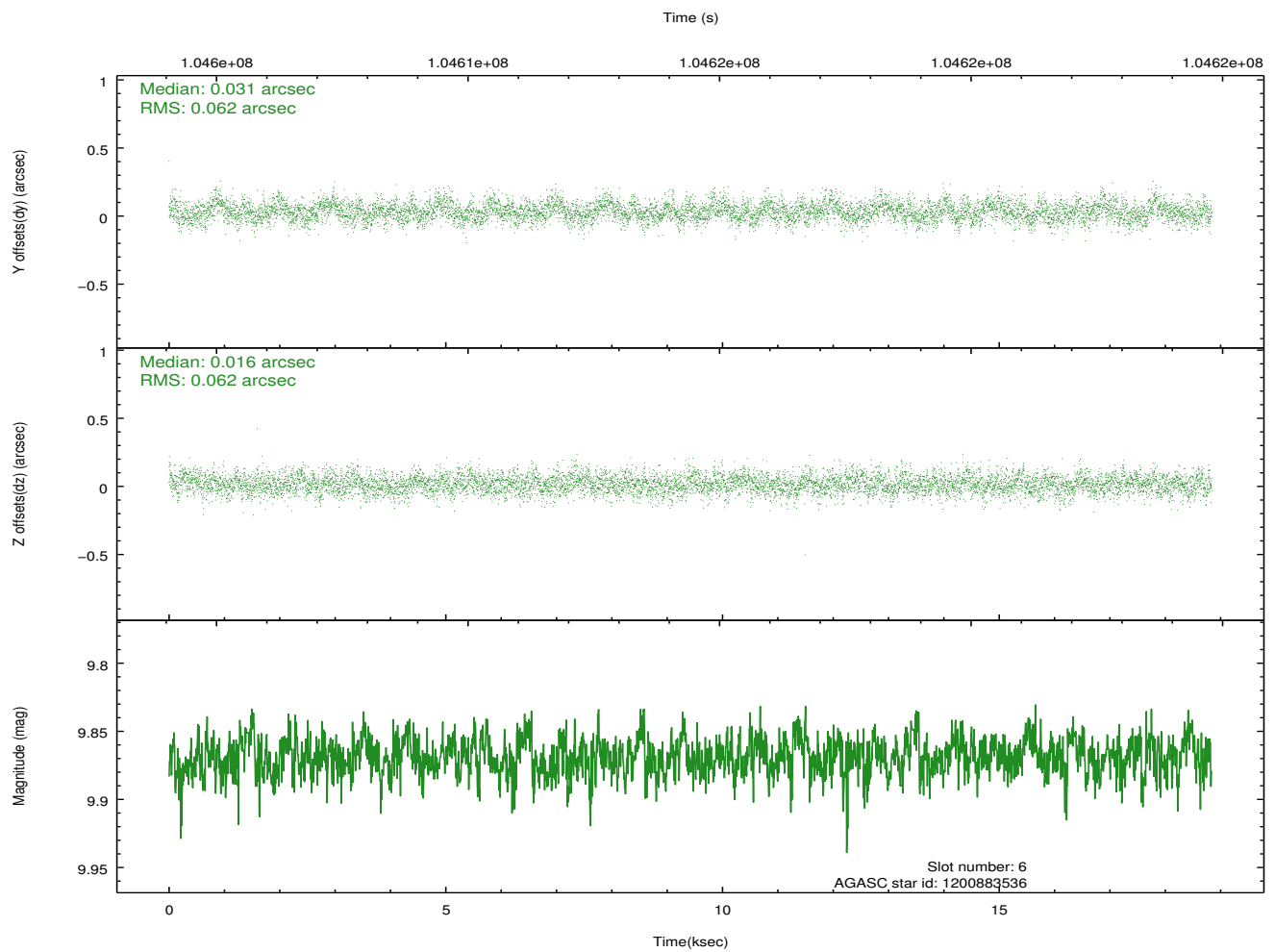
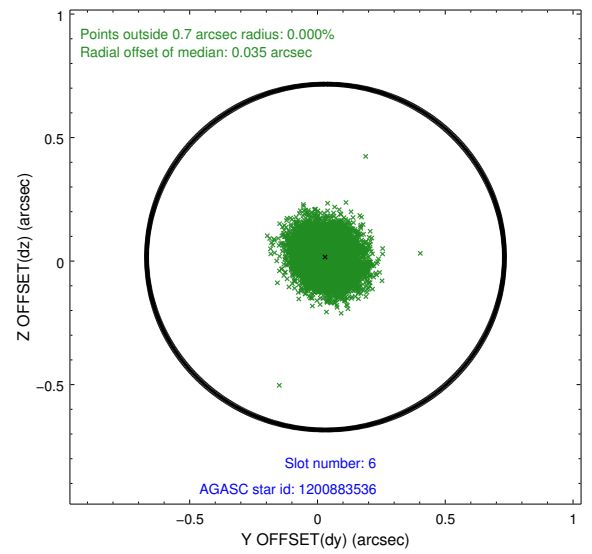
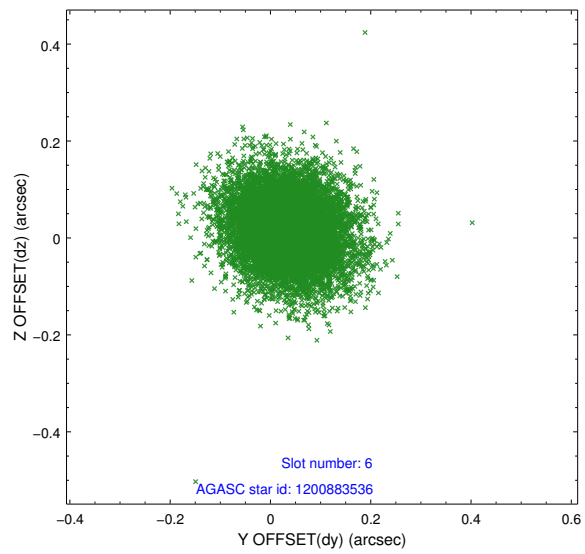
2.4.2 Slot 4



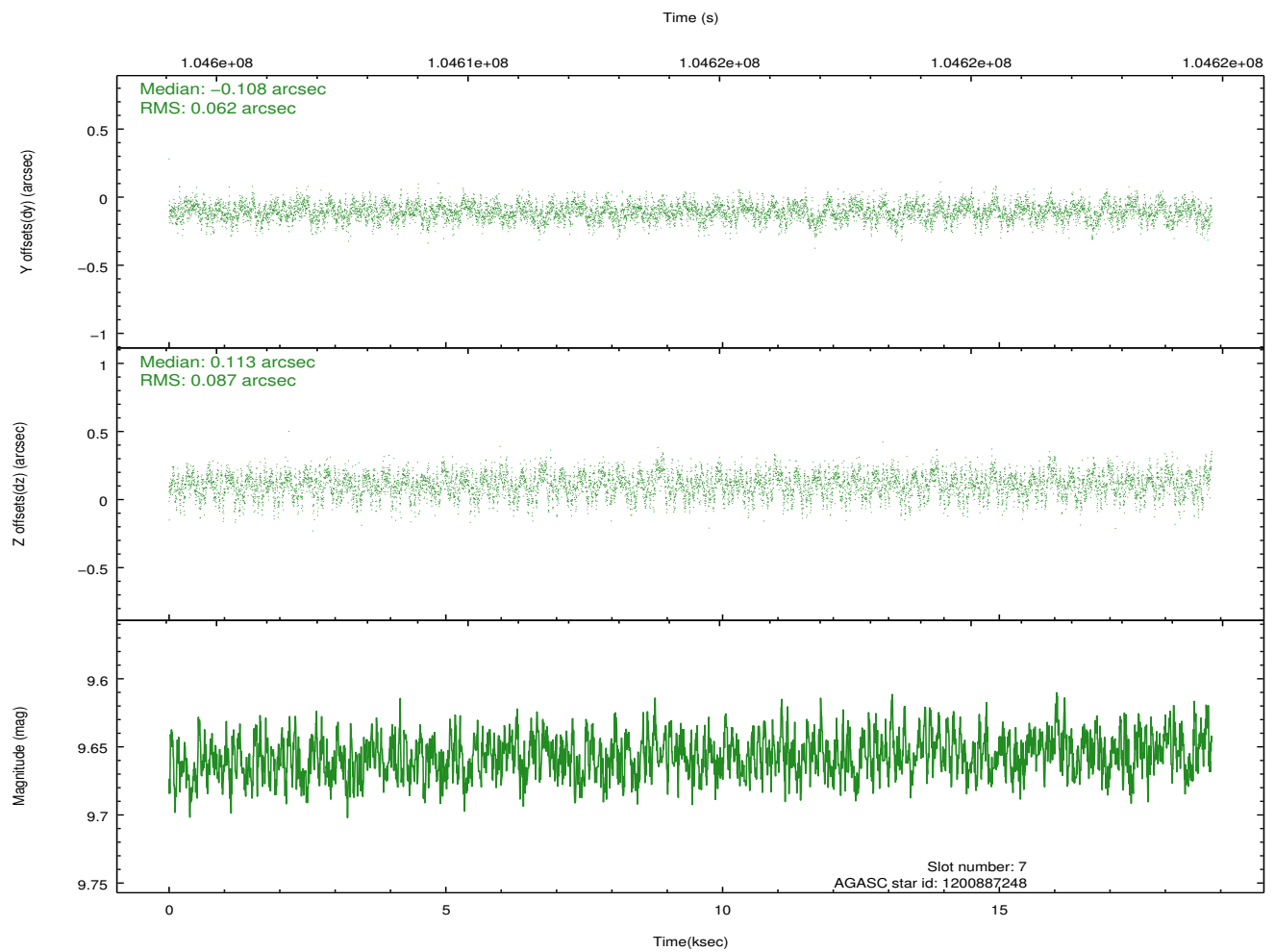
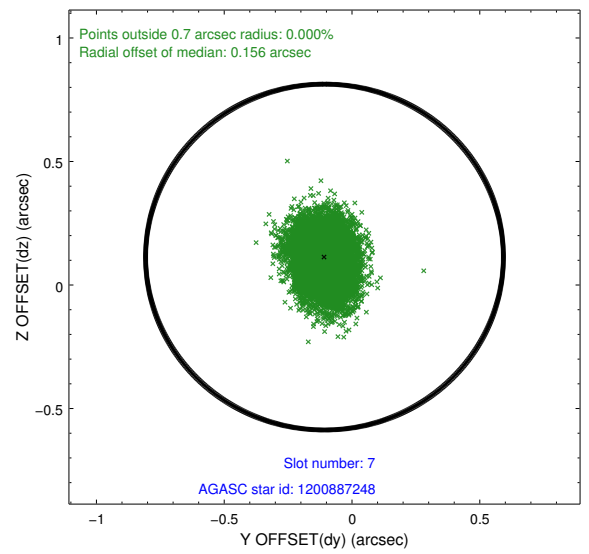
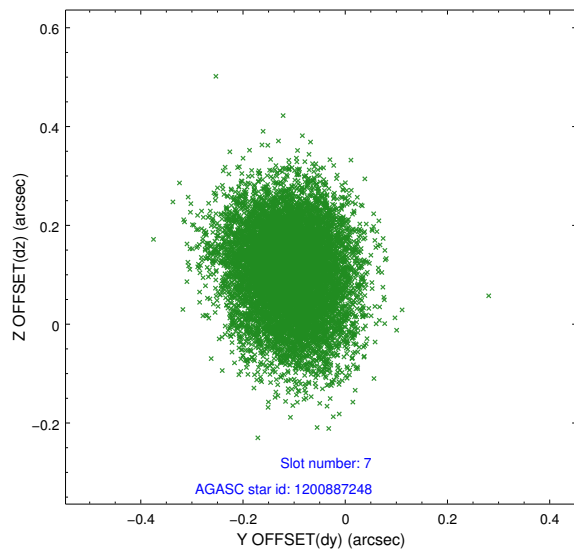
2.4.3 Slot 5



2.4.4 Slot 6

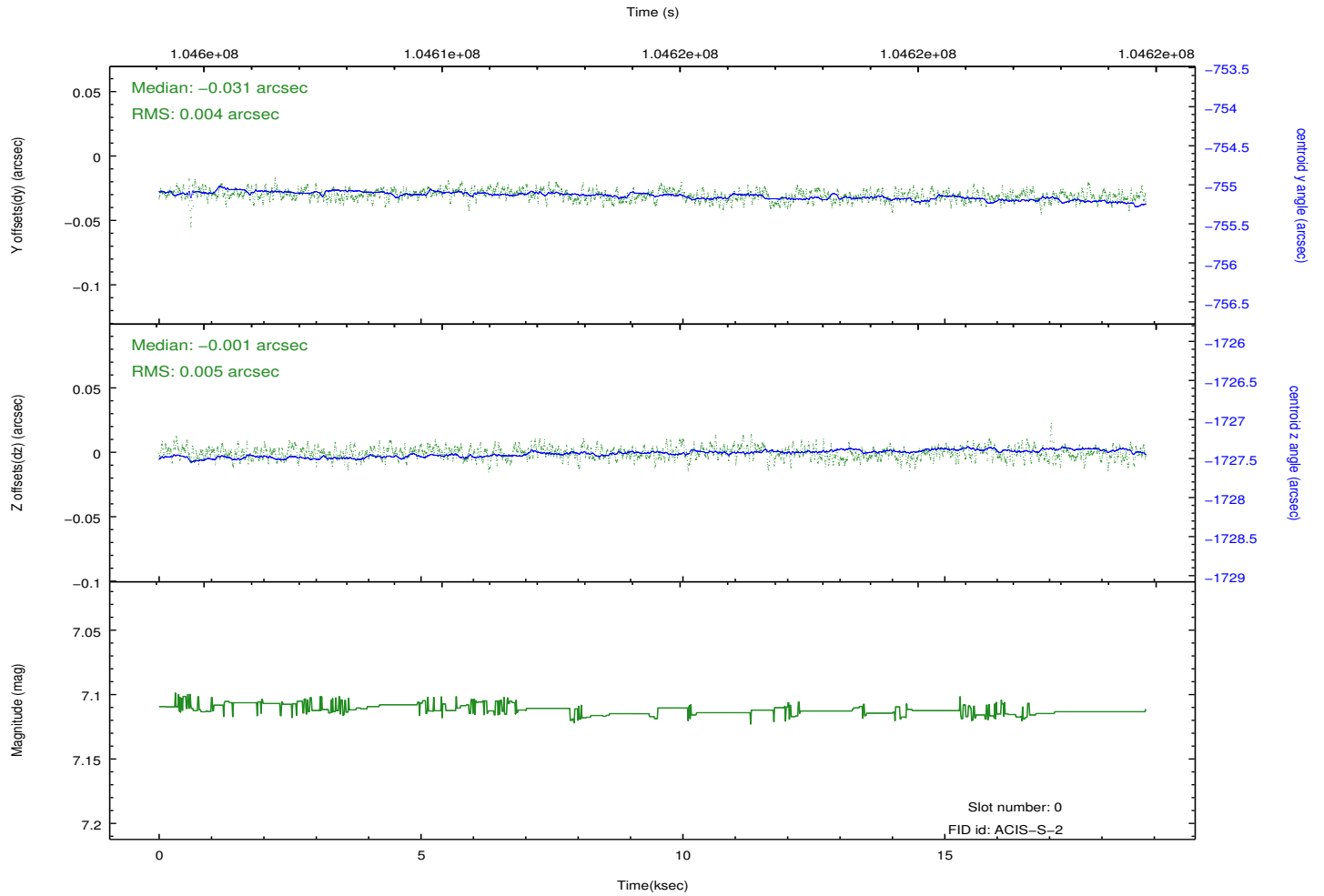
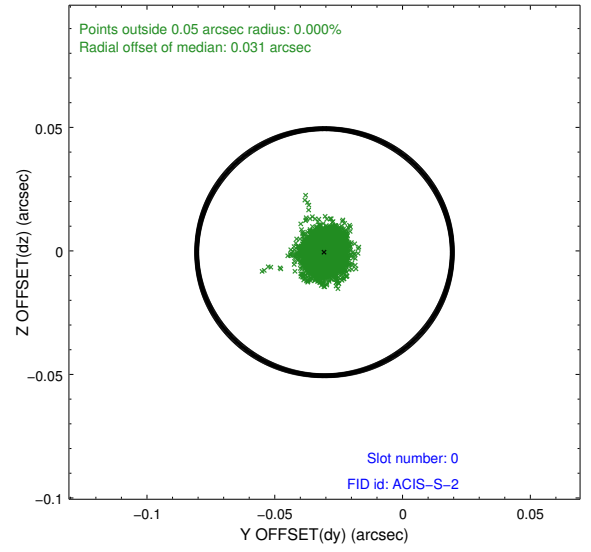
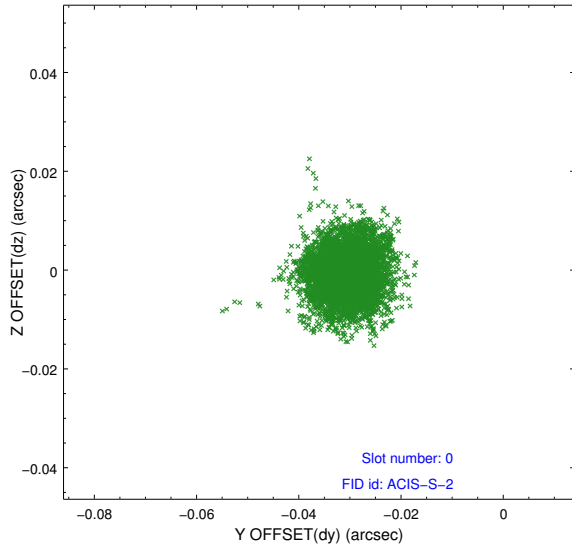


2.4.5 Slot 7

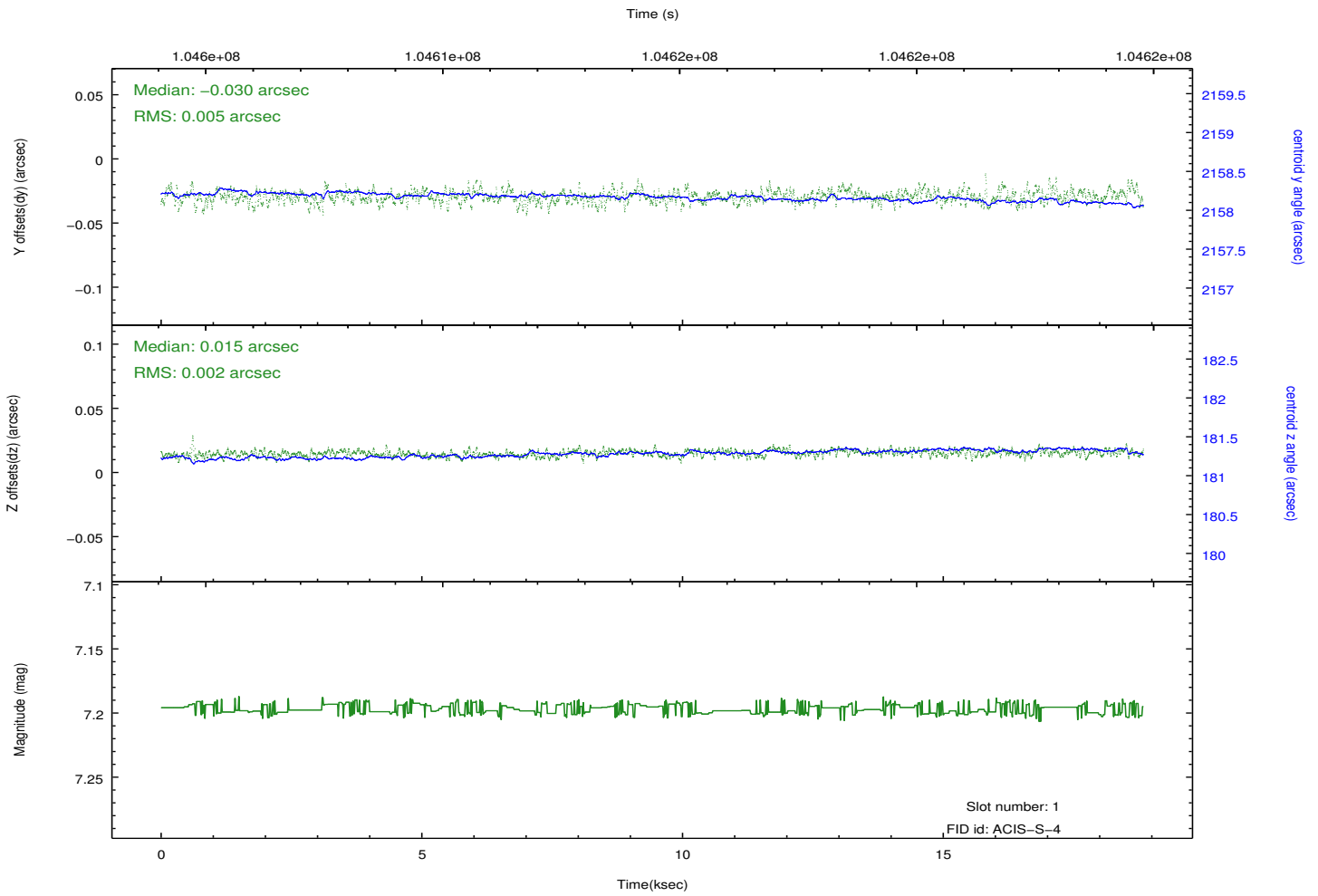
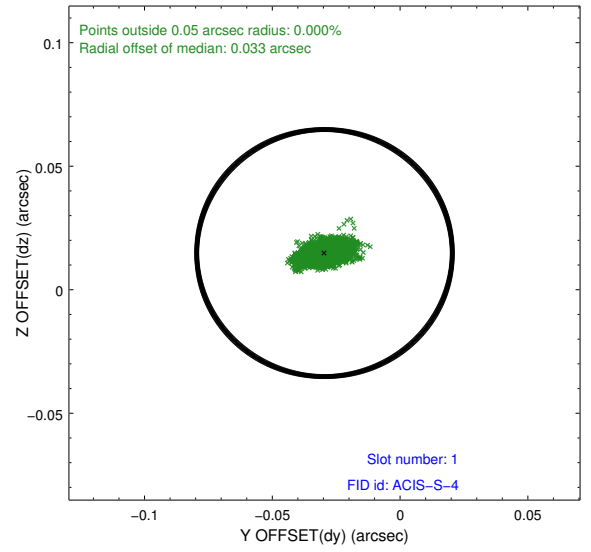
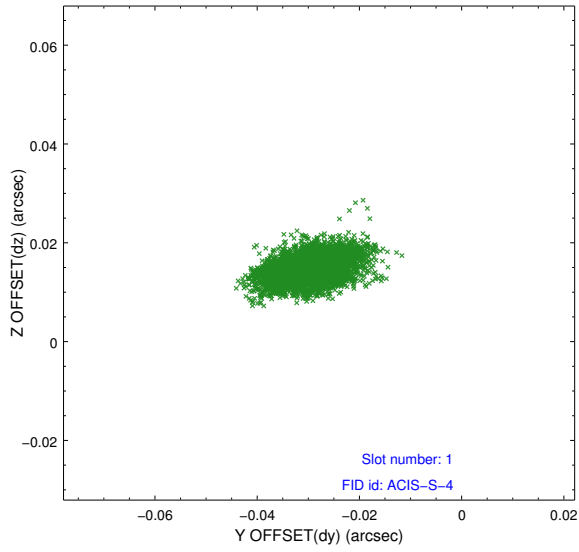


2.5 FID Slots

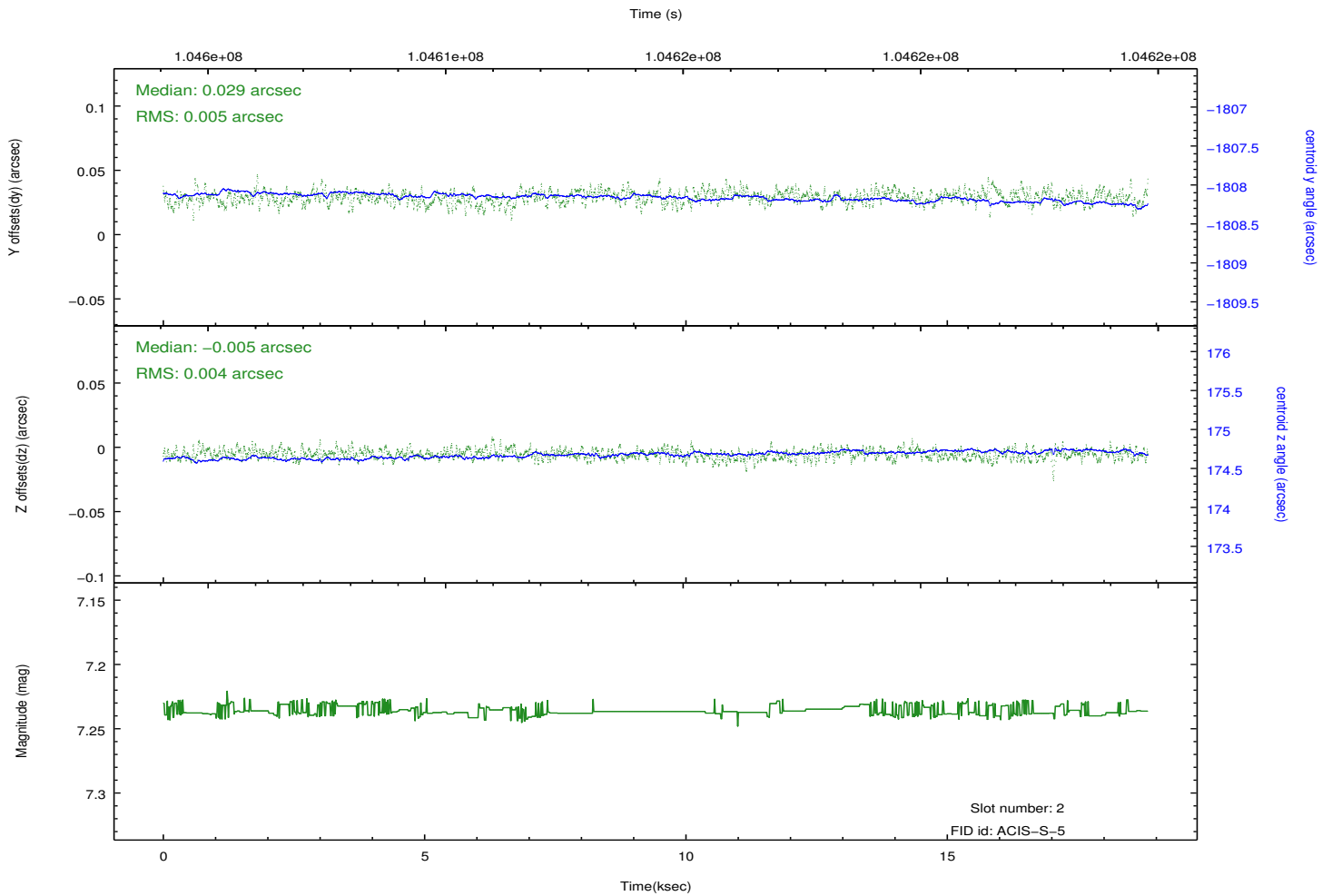
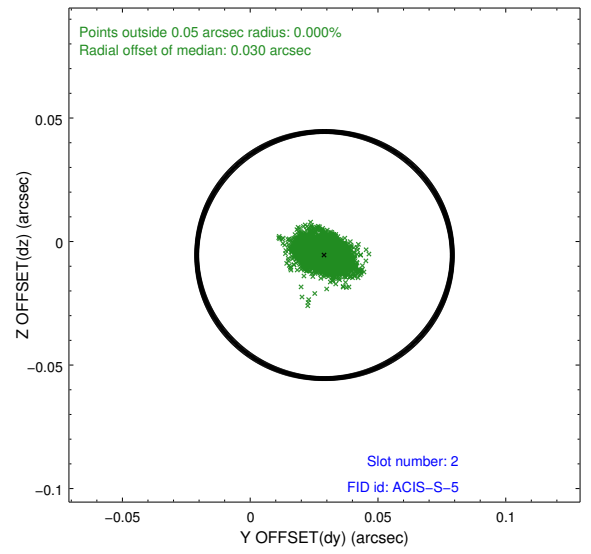
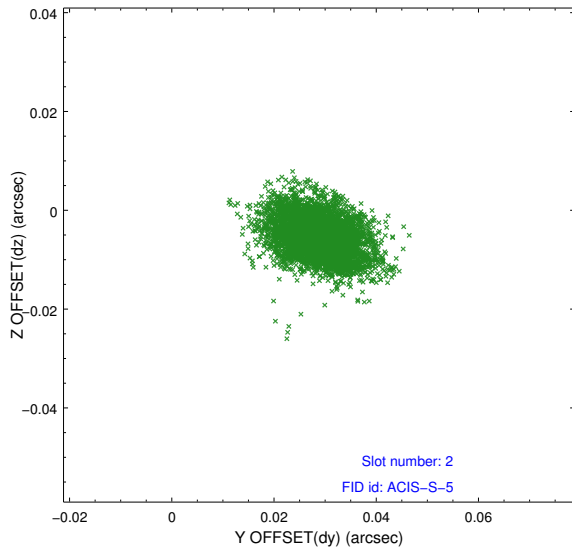
2.5.1 Slot 0



2.5.2 Slot 1



2.5.3 Slot 2



A Summary

A.1 Status

V&V Scientist	Jen Lauer
V&V Date (YYYY-MM-DD)	2012.09.19
V&V Edition	1
V&V Disposition and Status	OK
V&V Charge Time	18

A.2 Comments

Window constraint met.