

# V&V Reference Report

## L2 ASCDS Version : 8.4.5

Observation 10454 - L2 Version 2  
Chandra X-Ray Center

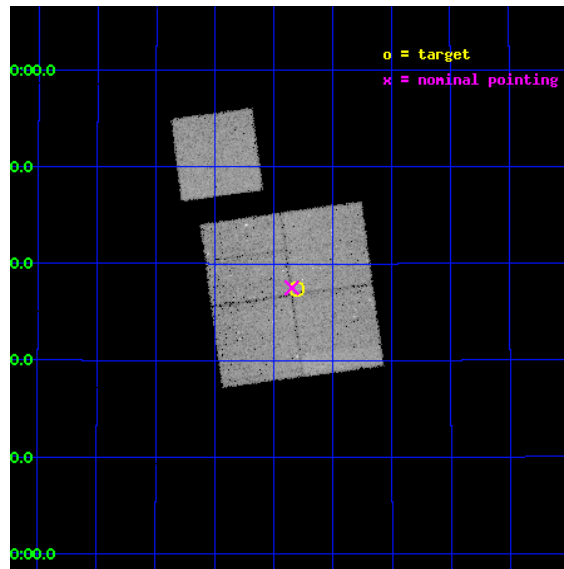
L2 Processing Date : Jun 15 2012

## Contents

<b>1</b>	<b>Front</b>	<b>2</b>
<b>2</b>	<b>OBI</b>	<b>3</b>
2.1	OBI . . . . .	3
2.1.1	Images . . . . .	3
2.1.2	Bias . . . . .	3
2.1.3	Parameters . . . . .	4
2.1.4	Events . . . . .	4
2.2	Compared Parameters . . . . .	5
2.3	Aspect . . . . .	6
2.4	Star Slots . . . . .	9
2.4.1	Slot 3 . . . . .	9
2.4.2	Slot 4 . . . . .	10
2.4.3	Slot 5 . . . . .	11
2.4.4	Slot 6 . . . . .	12
2.4.5	Slot 7 . . . . .	13
2.5	FID Slots . . . . .	14
2.5.1	Slot 0 . . . . .	14
2.5.2	Slot 1 . . . . .	15
2.5.3	Slot 2 . . . . .	16
<b>A</b>	<b>Summary</b>	<b>17</b>
A.1	Status . . . . .	17
A.2	Comments . . . . .	17

# 1 Front

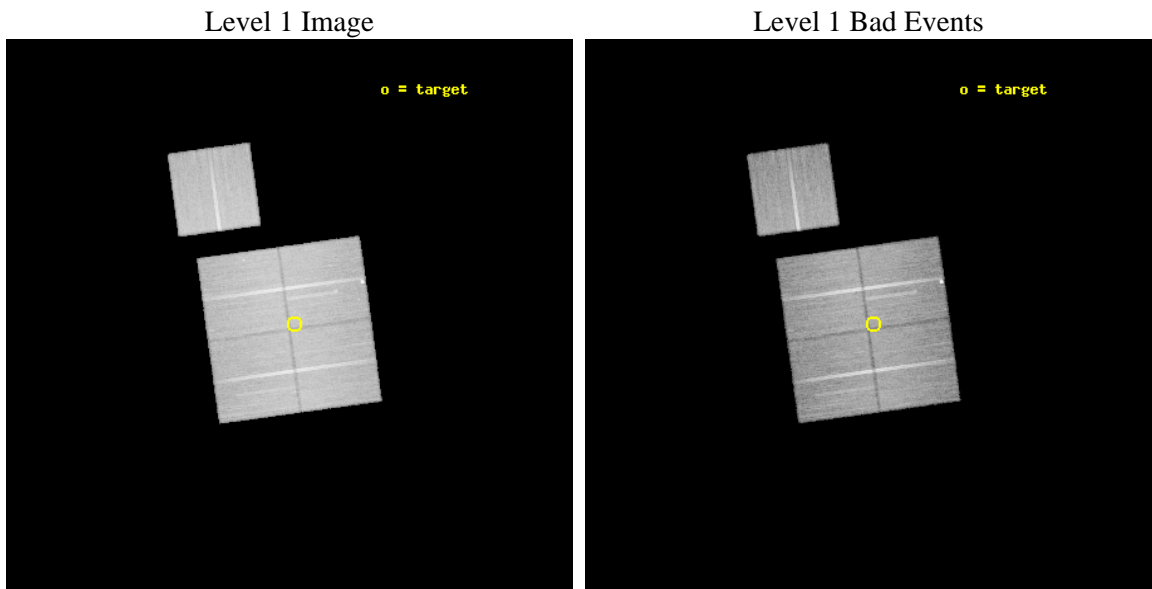
seq_num	800815	Sequence number
obs_id	10454	Observation id
title	The Role of AGN in Massive Galaxy Formation	Proposal title
observer	Dr. Spencer Stanford	Principal investigator
object	ISCS1030	Source name
dtcycle	0	&#160
cycle	P	events from which exps? Prim/Second/Both
ra_targ	217.327083	Observer's specified target RA [deg]
dec_targ	34.623833	Observer's specified target Dec [deg]
ra_nom	217.33677016902	Nominal RA [deg]
dec_nom	34.625177319718	Nominal Dec [deg]
roll_nom	352.20989546376	Nominal Roll [deg]
revision	2	Processing version of data
ontime	30683.800235987	Sum of GTIs [s]
livetime	30282.893796818	Livetime [s]
ontime0	30683.800235987	Sum of GTIs [s]
ontime1	30677.518265367	Sum of GTIs [s]
ontime2	30683.800235987	Sum of GTIs [s]
ontime3	30683.800235987	Sum of GTIs [s]
ontime6	30683.800235987	Sum of GTIs [s]
l2events	117264	Number of level 2 events



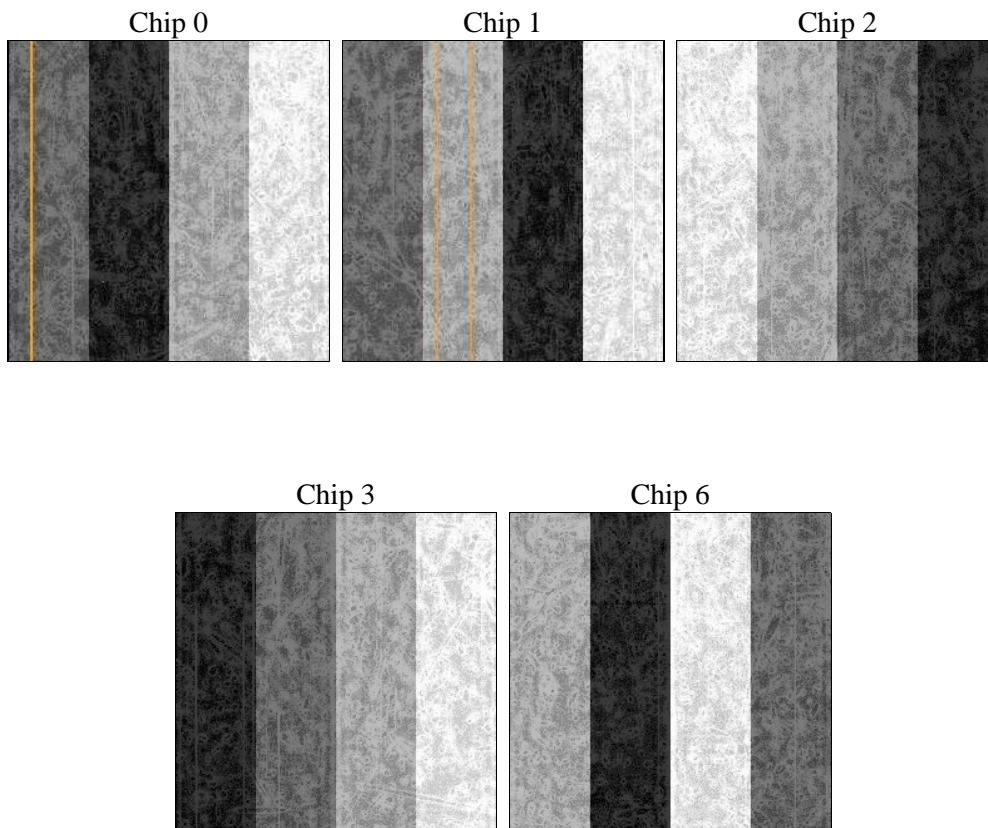
## 2 OBI

### 2.1 OBI

#### 2.1.1 Images



#### 2.1.2 Bias



### 2.1.3 Parameters

obi_num	0	Obi number	sched_exp_time	30557.000000	[s] Scheduled observation exposure time
ascdsver	8.4.5	Processing system revision	ontime	30683.800235987	Sum of GTIs [s]
caldbver	4.4.10	&#160	ontime0	30683.800235987	Sum of GTIs [s]
date	2012-06-15T02:02:42	Date and time of file creation	ontime1	30677.518265367	Sum of GTIs [s]
revision	2	Processing version of data	ontime2	30683.800235987	Sum of GTIs [s]
			ontime3	30683.800235987	Sum of GTIs [s]
			ontime6	30683.800235987	Sum of GTIs [s]
			l1events	1347325	Number of level 1 events

### 2.1.4 Events

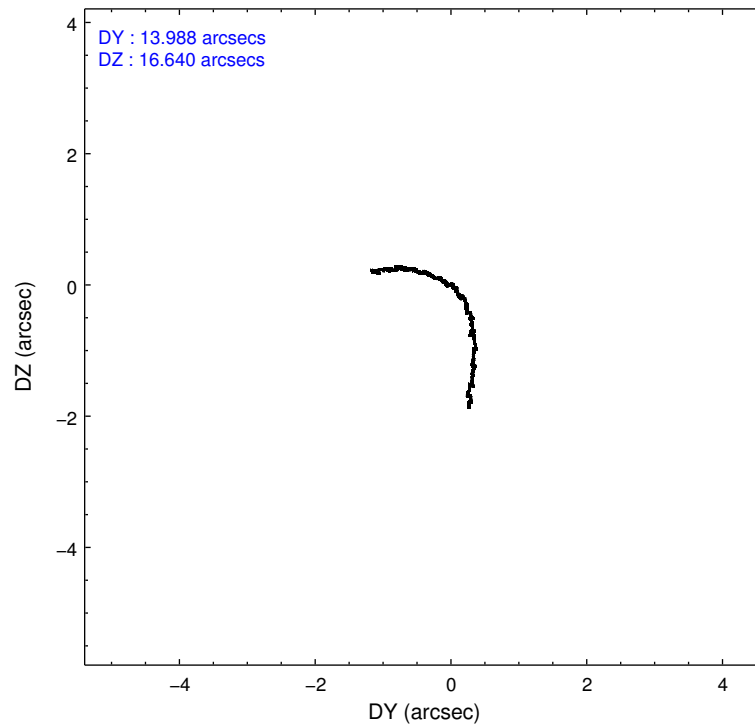
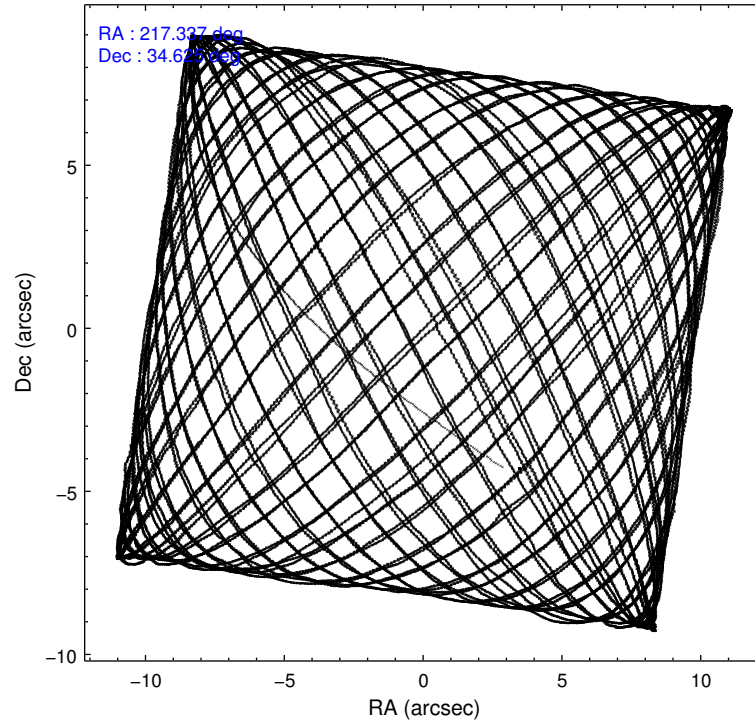
	ccd 0	ccd 1	ccd 2	ccd 3	ccd 6
level 1 events	255705	257892	286125	275791	271812
rejected events	227791	227089	258859	248717	243892
rejected %	89%	88%	90%	90%	89%

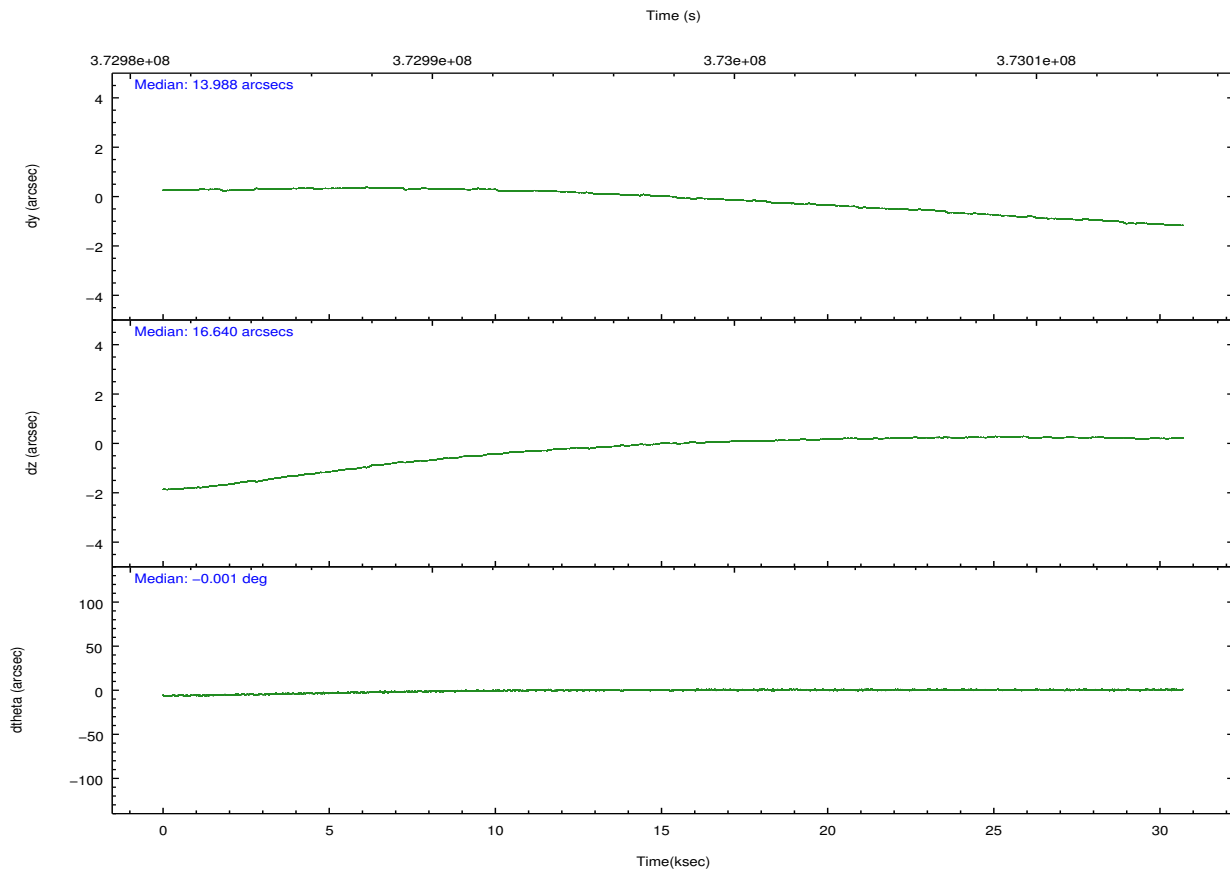
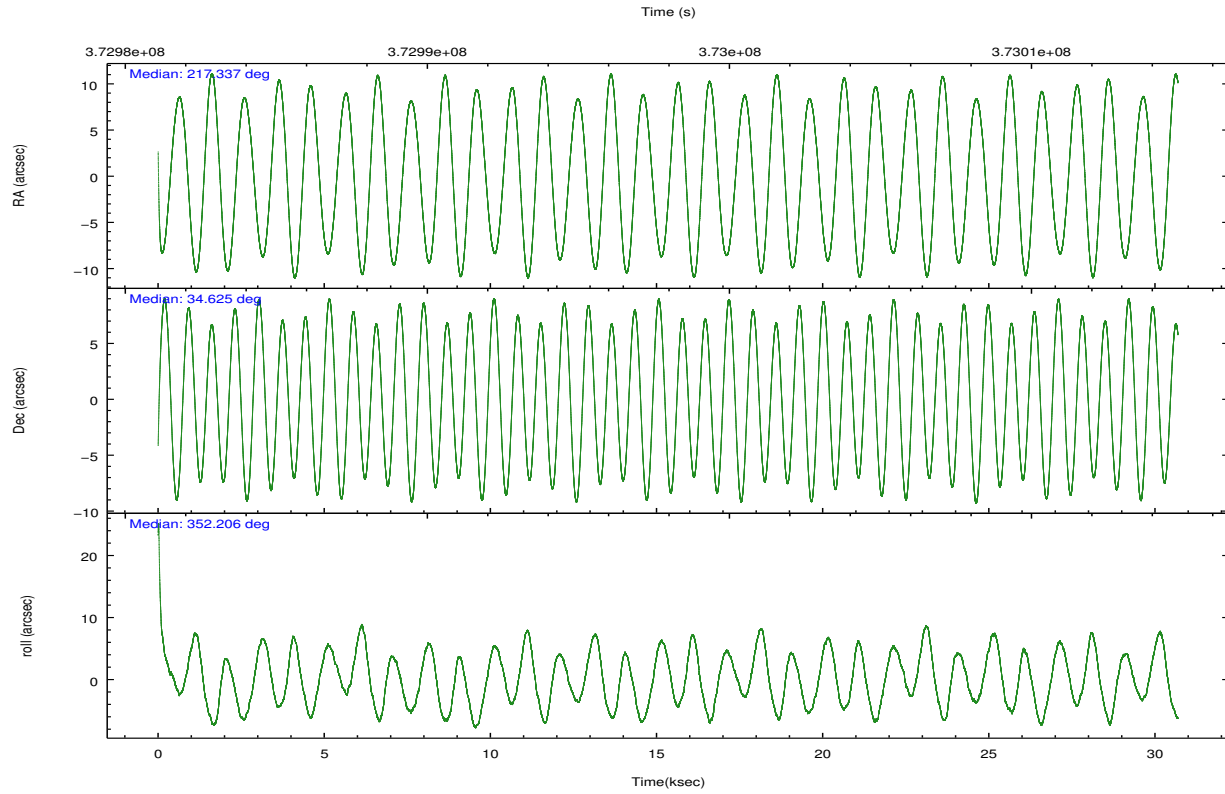
	ccd 0	ccd 1	ccd 2	ccd 3	ccd 6
grade 0 events	9788	11276	10281	10142	9803
	3%	4%	3%	3%	3%
grade 1 events	158	149	177	2425	139
	0%	0%	0%	0%	0%
grade 2 events	7164	7412	6746	6010	6470
	2%	2%	2%	2%	2%
grade 3 events	3072	3200	2866	2969	3060
	1%	1%	1%	1%	1%
grade 4 events	2857	3213	2857	2913	2979
	1%	1%	0%	1%	1%
grade 5 events	10043	10951	9629	11527	11143
	3%	4%	3%	4%	4%
grade 6 events	5544	6246	4972	5537	6112
	2%	2%	1%	2%	2%
grade 7 events	217079	215445	248597	234268	232106
	84%	83%	86%	84%	85%

## 2.2 Compared Parameters

Parameter	Planned	Actual	Parameter	Planned	Actual
Instrument	ACIS	ACIS	Obspar format version number	7	7
Detector	ACIS-01236	ACIS-01236	Obspar file type	PREDICTED	ACTUAL
Grating	NONE	NONE	Obspar update status	NONE	UPDATED
Data mode	VFAINT	VFAINT	CCD I0 on	Y	Y
Observation mode	POINTING	POINTING	CCD I1 on	Y	Y
[deg] Pointing RA	217.305891	217.3367701690175	CCD I2 on	Y	Y
[deg] Pointing Dec	34.614671	34.62517731971792	CCD I3 on	Y	Y
[deg] Pointing Roll	352.018747	352.2098954637588	CCD S0 on	N	N
[mm] SIM focus pos	-0.782348	-0.7809083437167272	CCD S1 on	N	N
[mm] SIM defocus	0	0.001439871863259334	CCD S2 on	O1	Y
[mm] SIM translation stage pos	-233.592463	-233.5874344608287	CCD S3 on	N	N
[mm] SIM translation stage offset	0	-0.005018542100998502	CCD S4 on	N	N
[s] Observation start time (MET)	372982757.184000	372981503.03613	CCD S5 on	N	N
Observation start date	2009-10-26T22:18:11	2009-10-26T21:58:23	Number of optional ACIS chips dropped	0	0
[s] Observation end time (MET)	373013314.184000	373014345.57528	On-chip summing requested	N	N
Observation end date	2009-10-27T06:47:28	2009-10-27T07:05:45	Subarray requested	NONE	NONE
Read mode	TIMED	TIMED	Alternating exposures requested	N	N
			[s] Primary exposure time	0.000000	3.1

## 2.3 Aspect



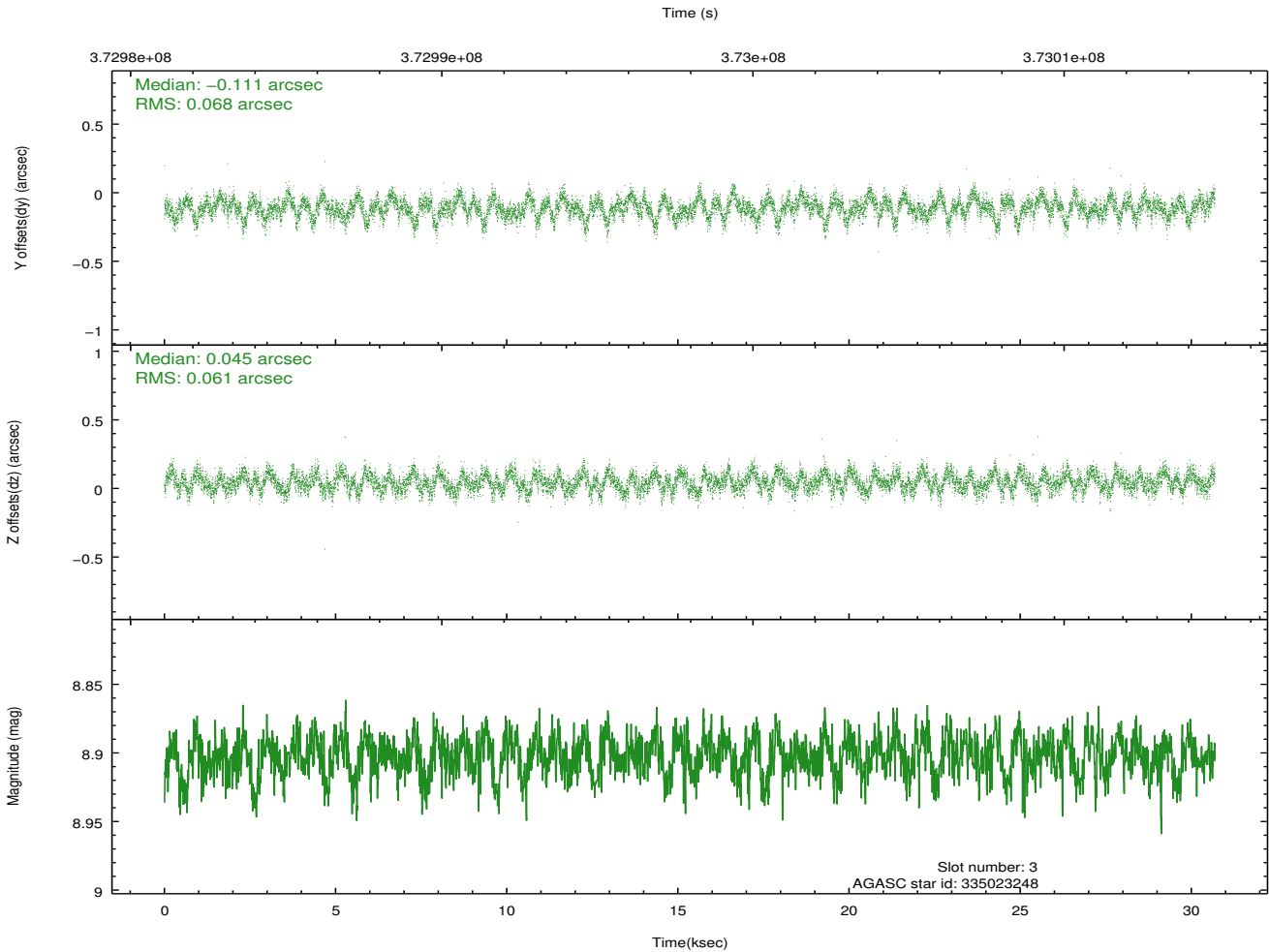
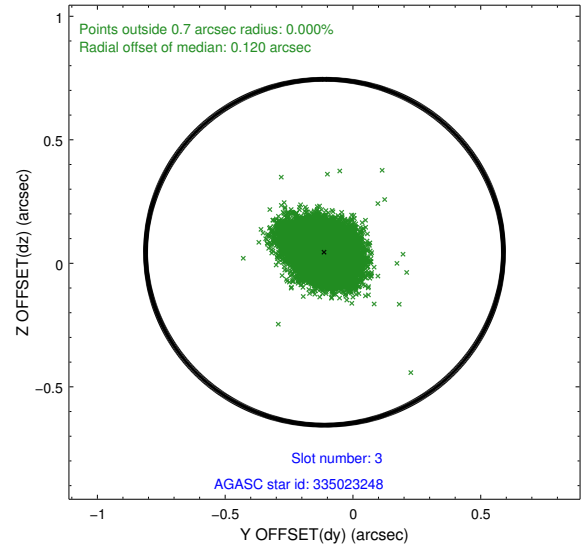
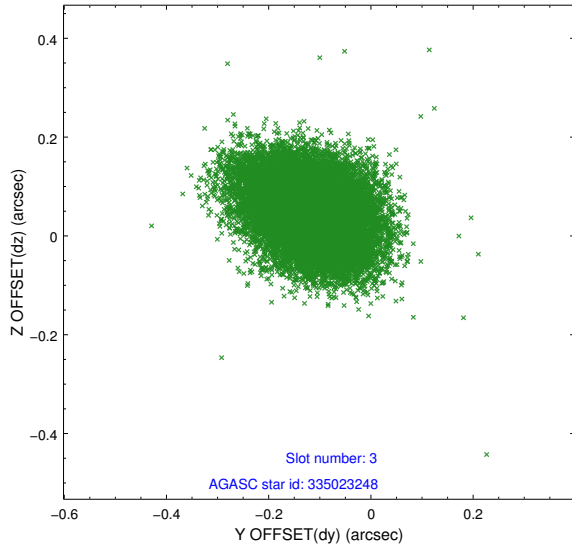


### Slot Statistics

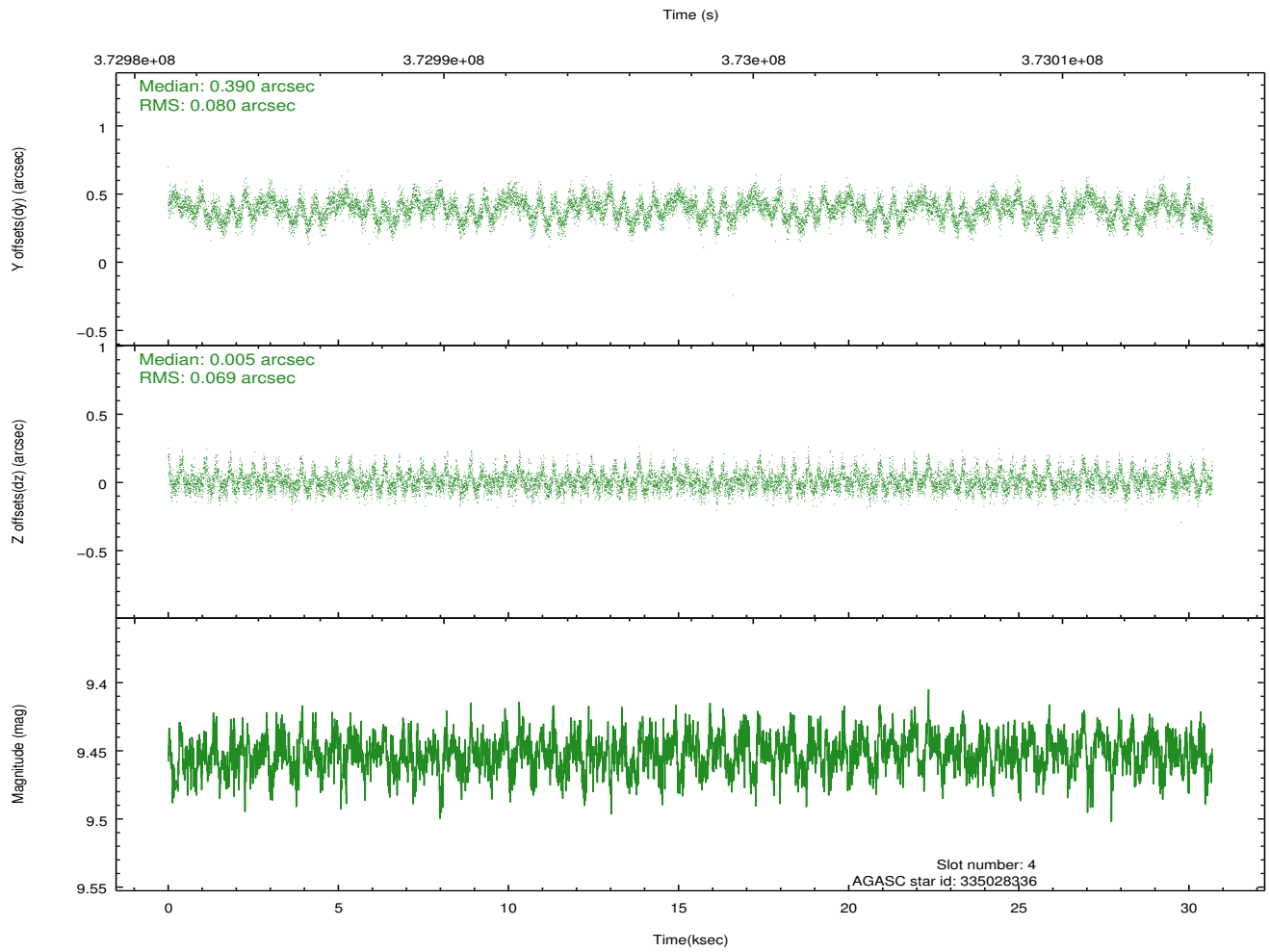
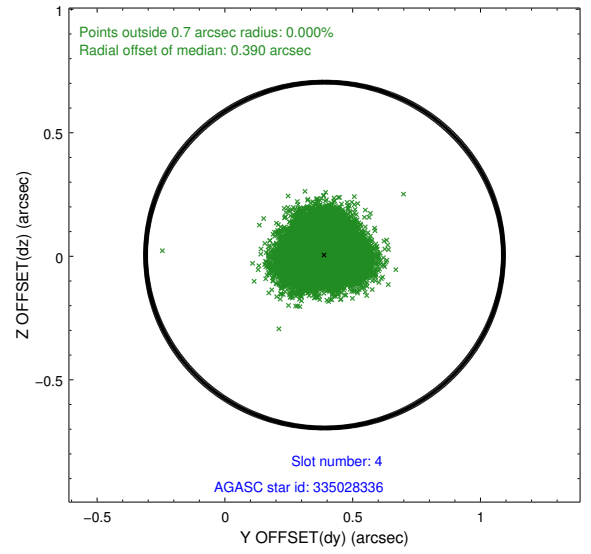
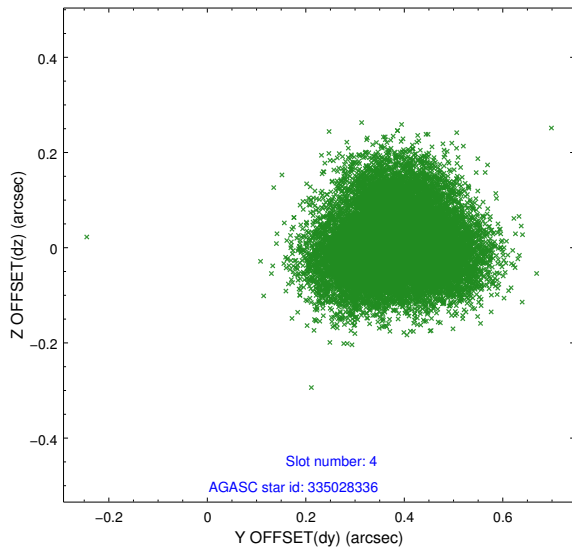
slot	status	id	mag	n_pts	med_dy	med_dz	dr1	dr2	ra	dec	mean_y	mean_z
0	FID	ACIS-I-1	7.05	7485	0.065	-0.040	0.016	0.054	0.000000	0.000000	925.72	-840.00
1	FID	ACIS-I-5	7.05	7485	-0.216	0.067	0.020	0.033	0.000000	0.000000	-1822.60	1057.58
2	FID	ACIS-I-6	7.05	7485	0.060	0.044	0.019	0.036	0.000000	0.000000	391.22	1702.12
3	GUIDE	335023248	8.90	14959	-0.111	0.045	0.096	0.157	217.634832	34.944512	796.28	1312.56
4	GUIDE	335028336	9.45	14949	0.390	0.005	0.113	0.177	217.189840	34.665629	-365.08	134.40
5	GUIDE	335030384	8.84	14965	0.163	-0.143	0.087	0.140	216.806407	34.722197	-1517.46	181.71
6	GUIDE	335417968	9.38	14954	-0.132	-0.086	0.100	0.159	217.358149	35.055285	-67.80	1592.37
7	GUIDE	335021368	9.65	14956	-0.305	0.173	0.120	0.204	217.529643	33.934817	1001.75	-2329.73

## 2.4 Star Slots

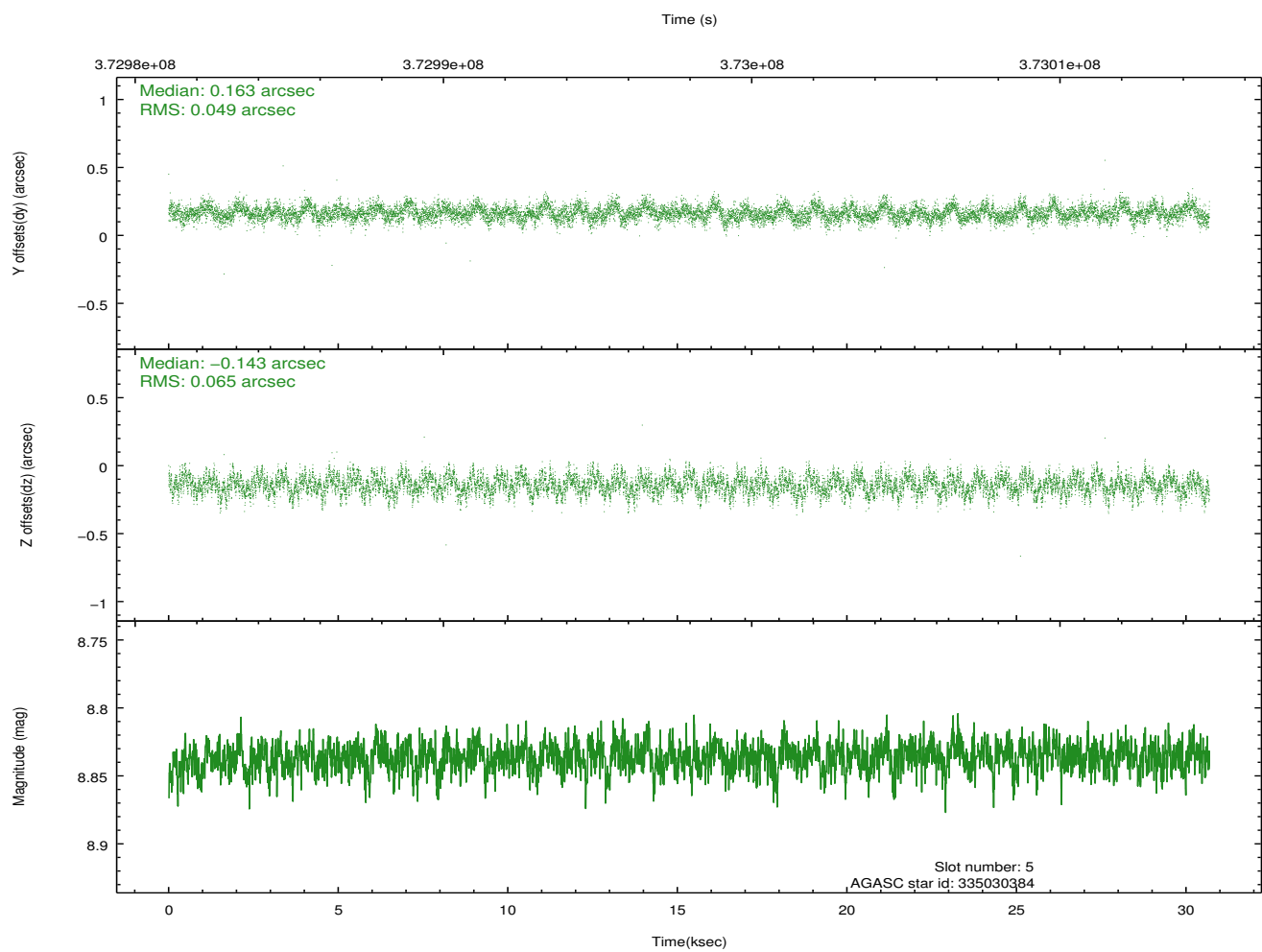
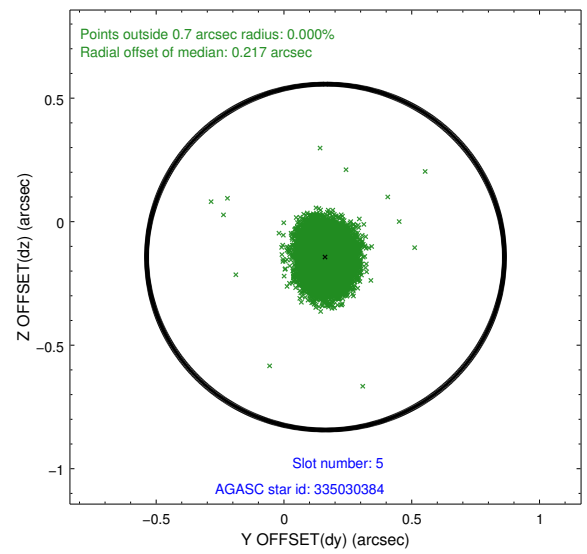
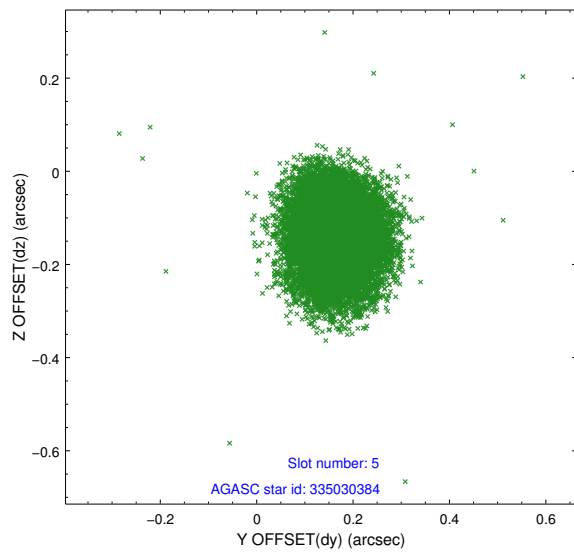
### 2.4.1 Slot 3



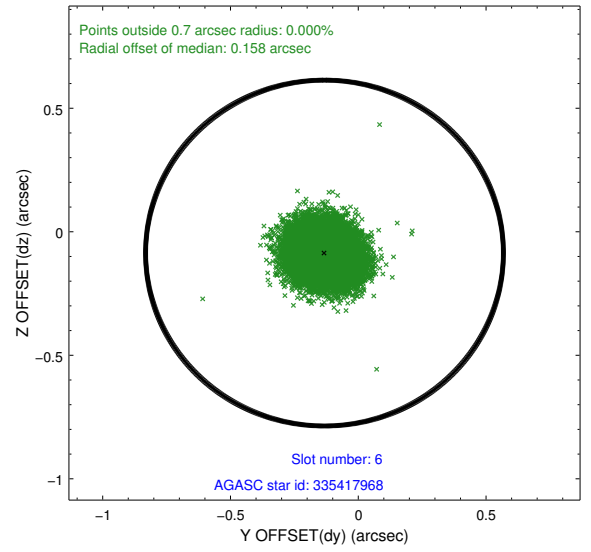
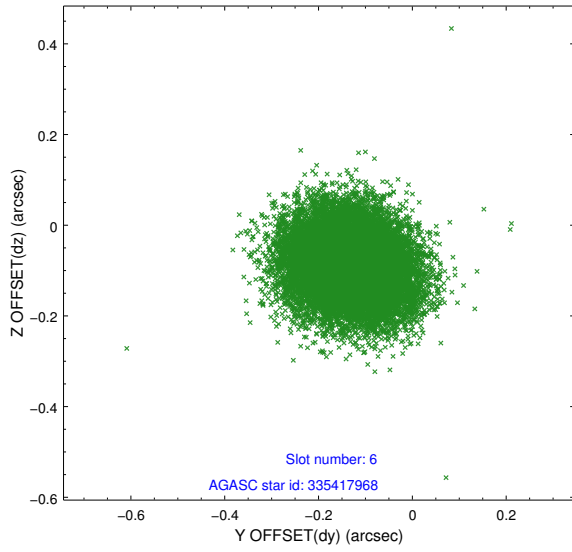
### 2.4.2 Slot 4



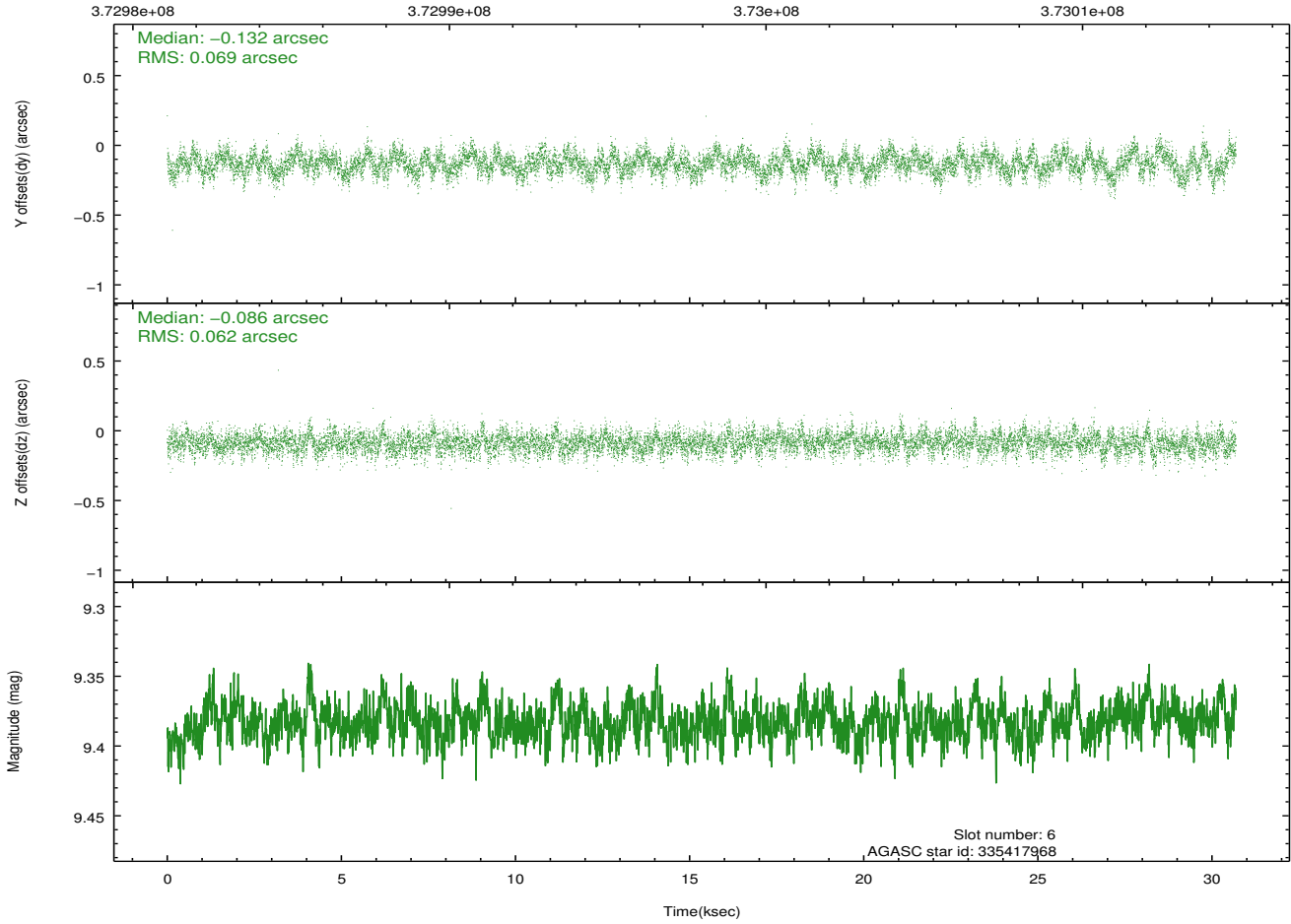
### 2.4.3 Slot 5



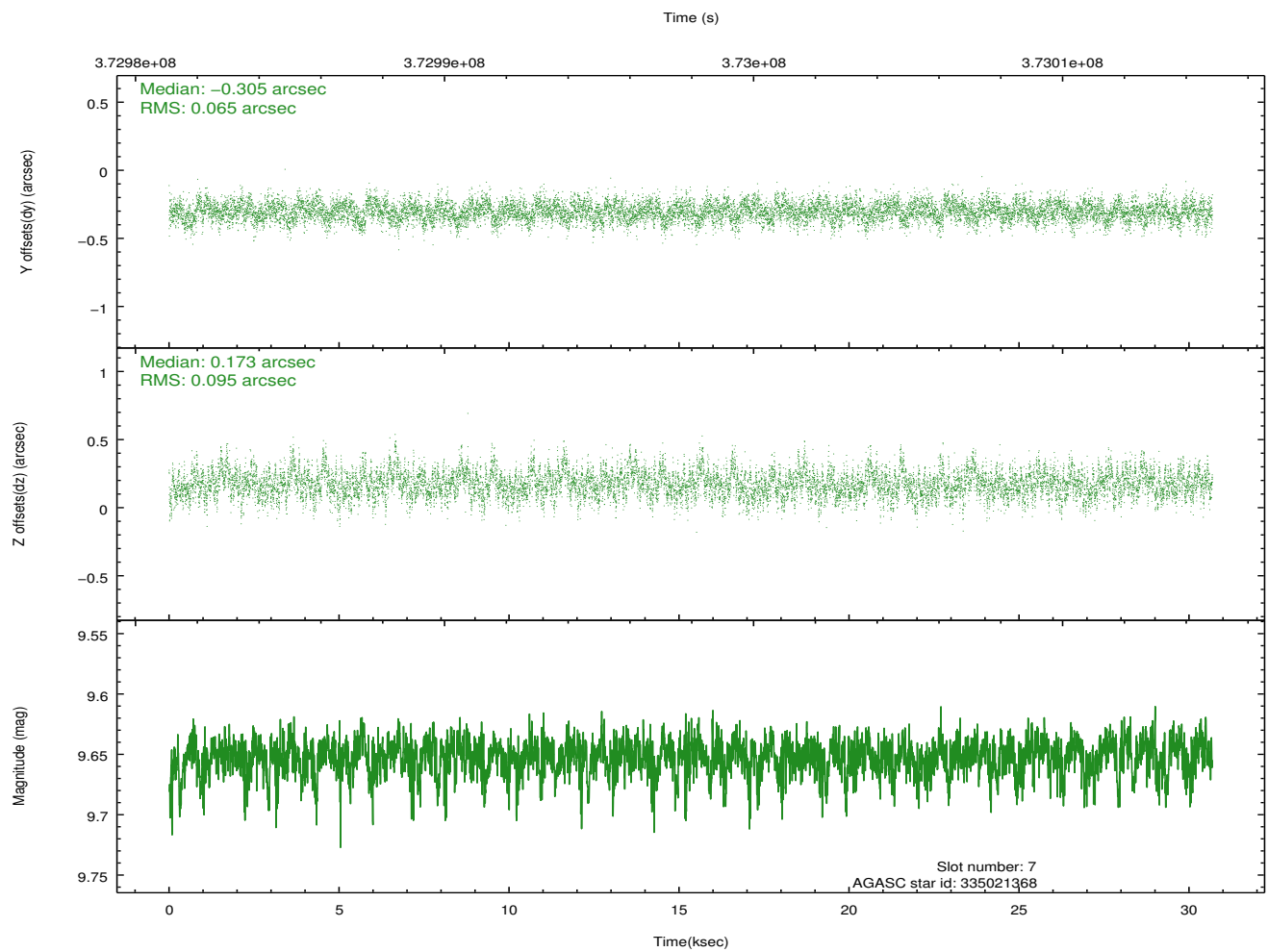
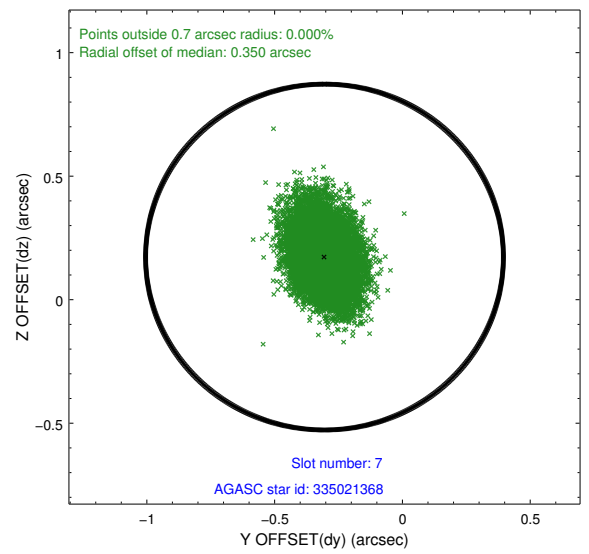
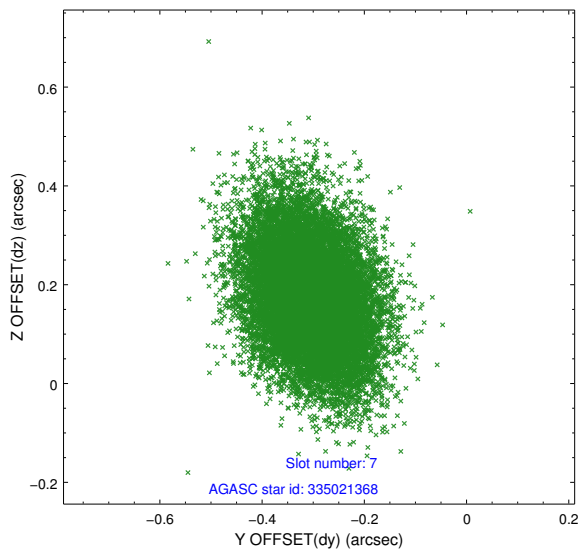
### 2.4.4 Slot 6



Time (s)

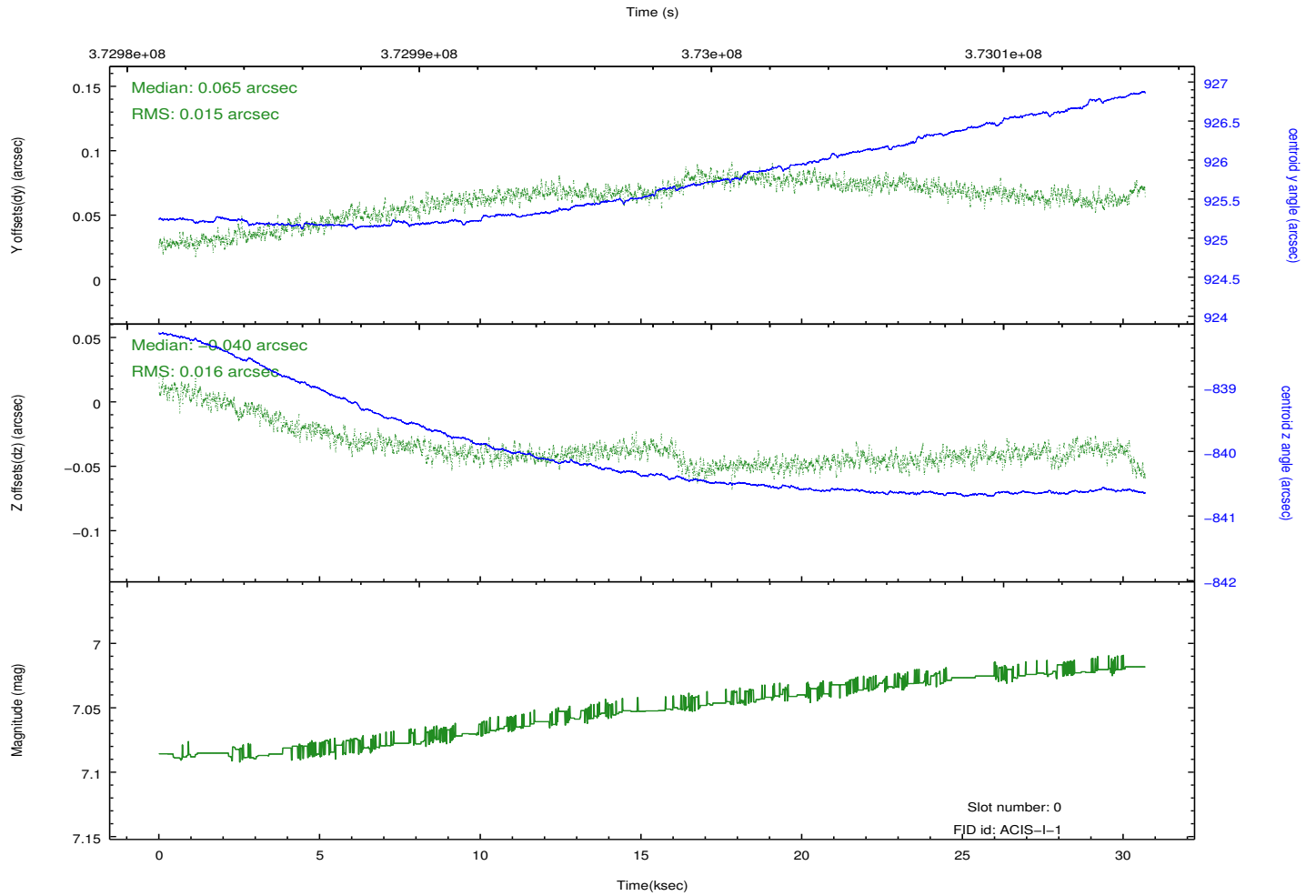
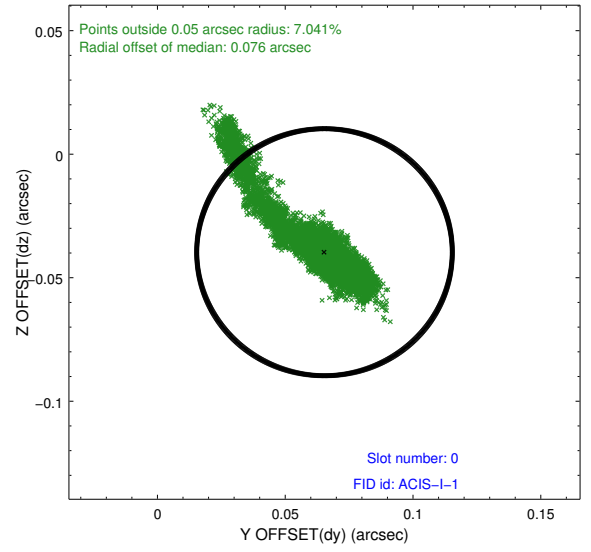
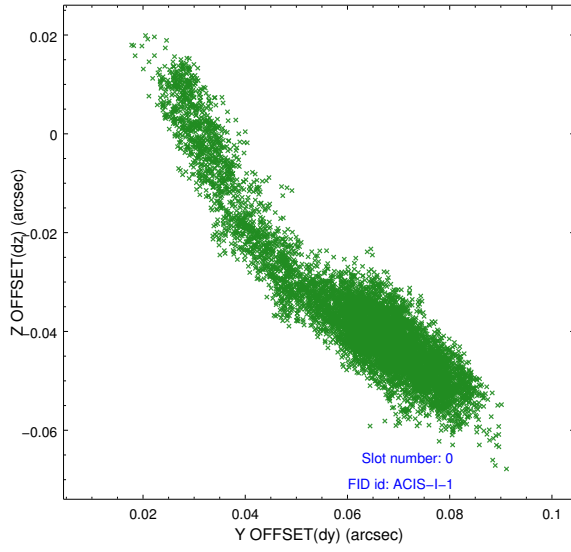


## 2.4.5 Slot 7

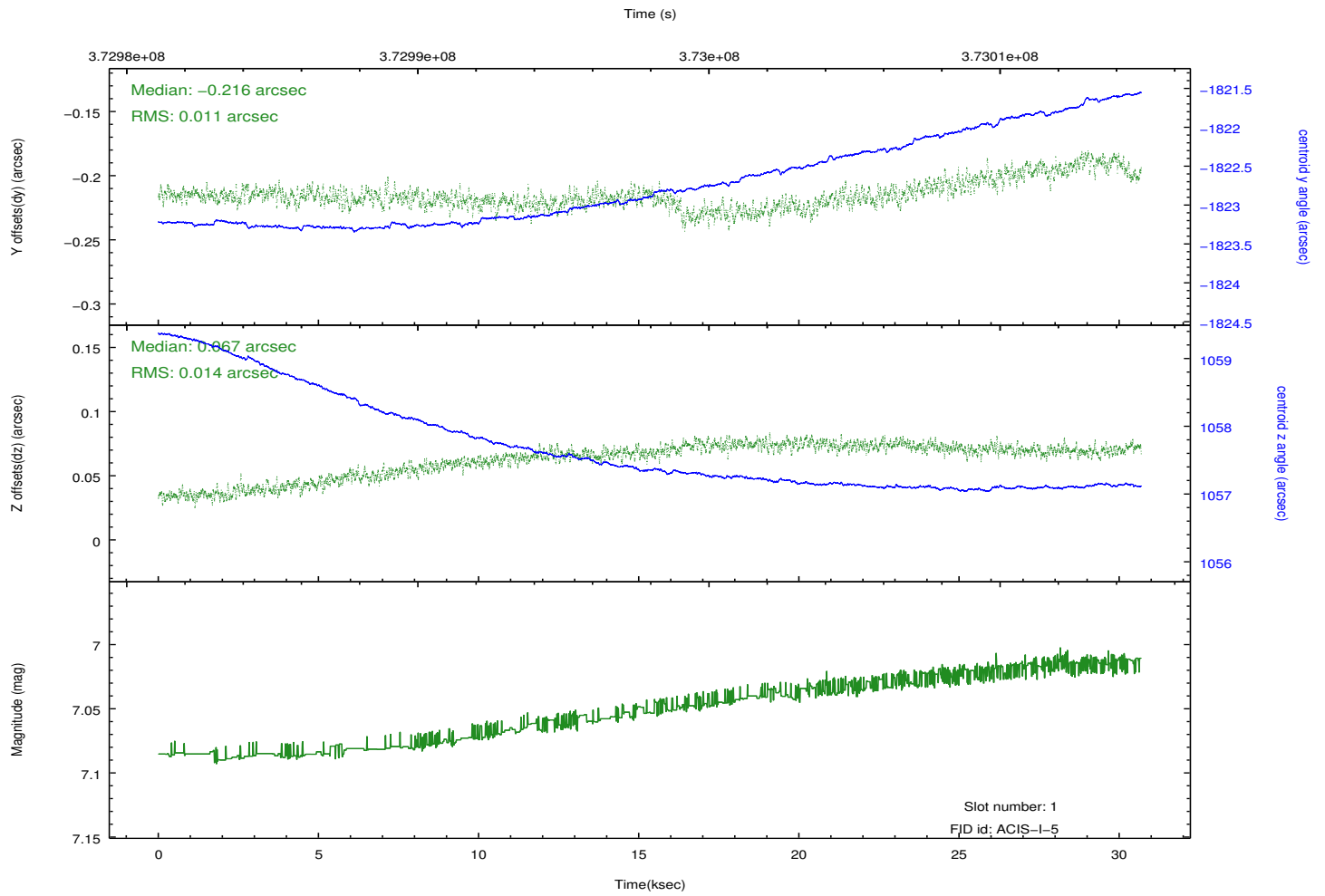
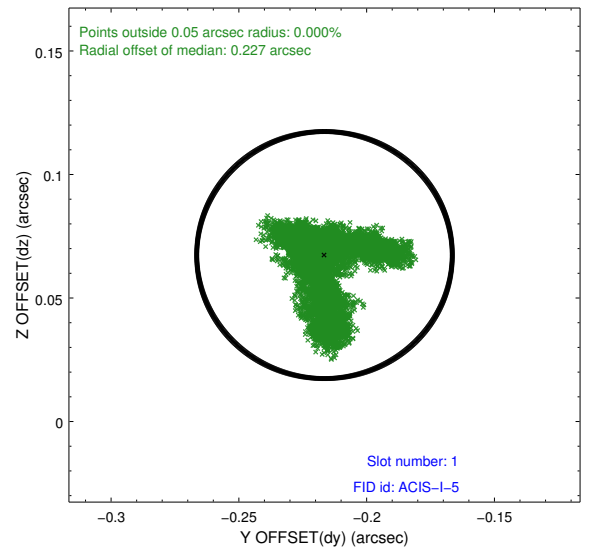
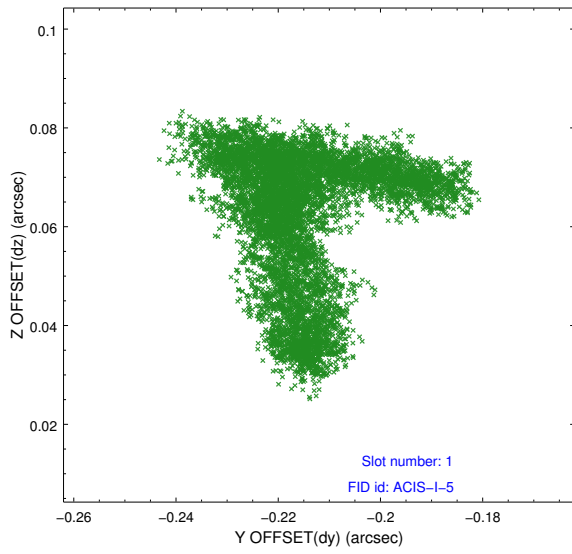


## 2.5 FID Slots

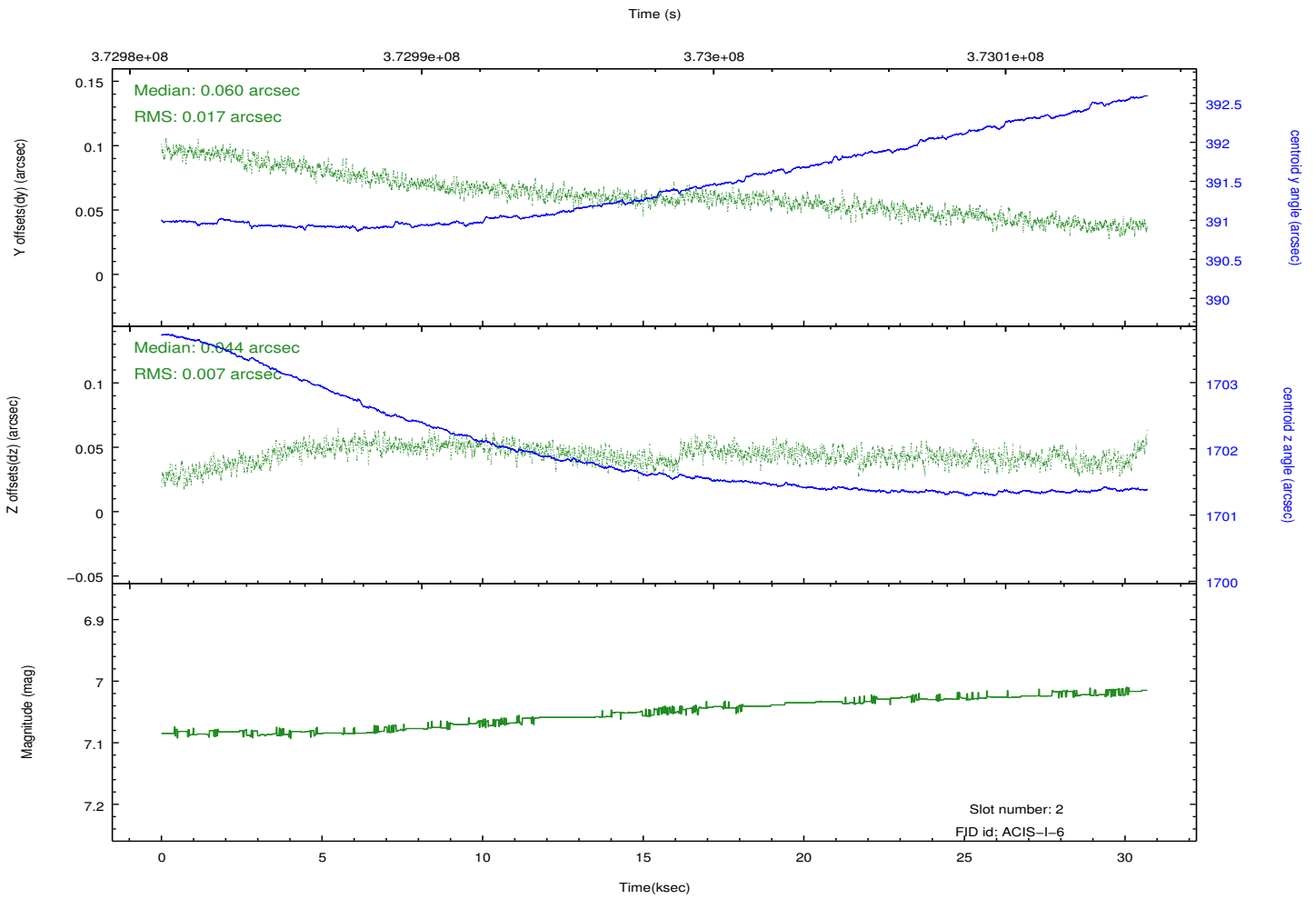
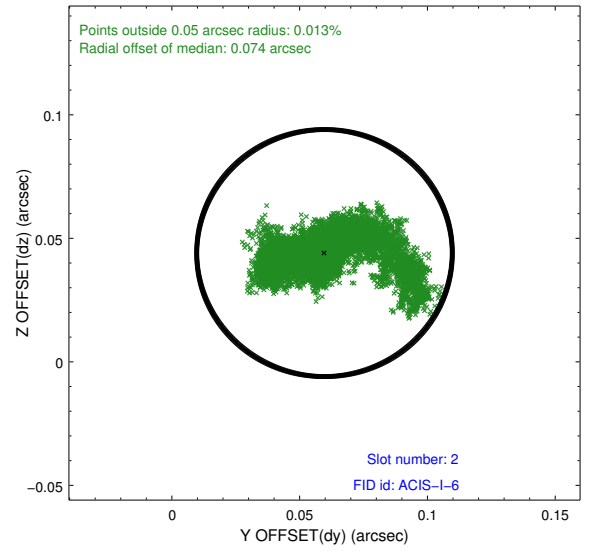
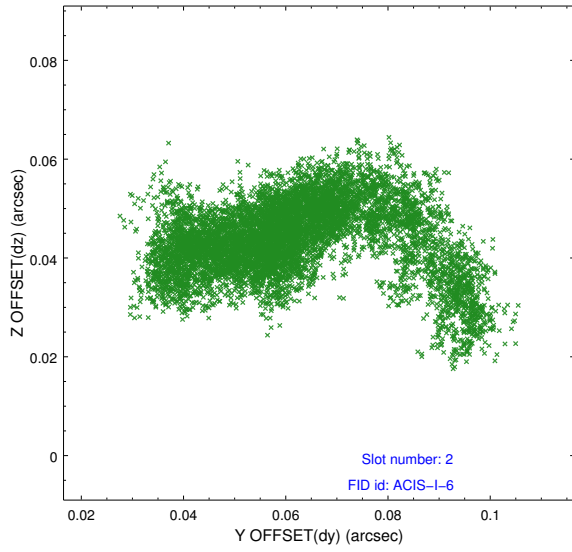
### 2.5.1 Slot 0



## 2.5.2 Slot 1



### 2.5.3 Slot 2



# A Summary

## A.1 Status

V&V Scientist	Jen Lauer
V&V Date (YYYY-MM-DD)	2012.06.19
V&V Edition	1
V&V Disposition and Status	OK
V&V Charge Time	30.683800235987

## A.2 Comments