

# V&V Reference Report

## L2 ASCDS Version : 8.4.5

Observation 10924 - L2 Version 2  
Chandra X-Ray Center

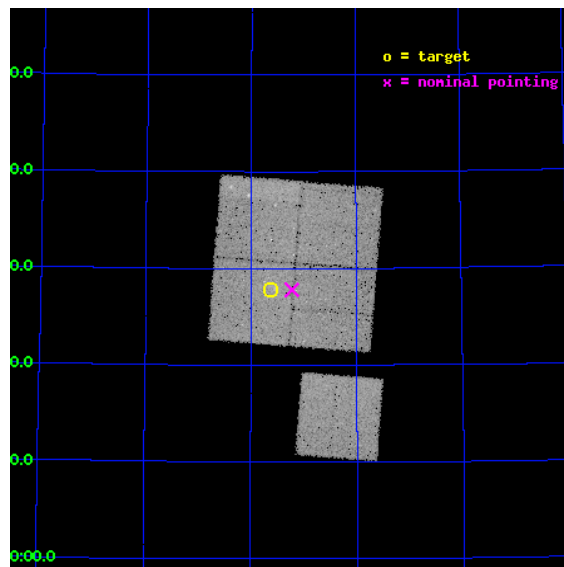
L2 Processing Date : Jun 9 2012

## Contents

<b>1</b>	<b>Front</b>	<b>2</b>
<b>2</b>	<b>OBI</b>	<b>3</b>
2.1	OBI . . . . .	3
2.1.1	Images . . . . .	3
2.1.2	Bias . . . . .	3
2.1.3	Parameters . . . . .	4
2.1.4	Events . . . . .	4
2.2	Compared Parameters . . . . .	5
2.3	Aspect . . . . .	6
2.4	Star Slots . . . . .	9
2.4.1	Slot 3 . . . . .	9
2.4.2	Slot 4 . . . . .	10
2.4.3	Slot 5 . . . . .	11
2.4.4	Slot 6 . . . . .	12
2.4.5	Slot 7 . . . . .	13
2.5	FID Slots . . . . .	14
2.5.1	Slot 0 . . . . .	14
2.5.2	Slot 1 . . . . .	15
2.5.3	Slot 2 . . . . .	16
<b>A</b>	<b>Summary</b>	<b>17</b>
A.1	Status . . . . .	17
A.2	Comments . . . . .	17

# 1 Front

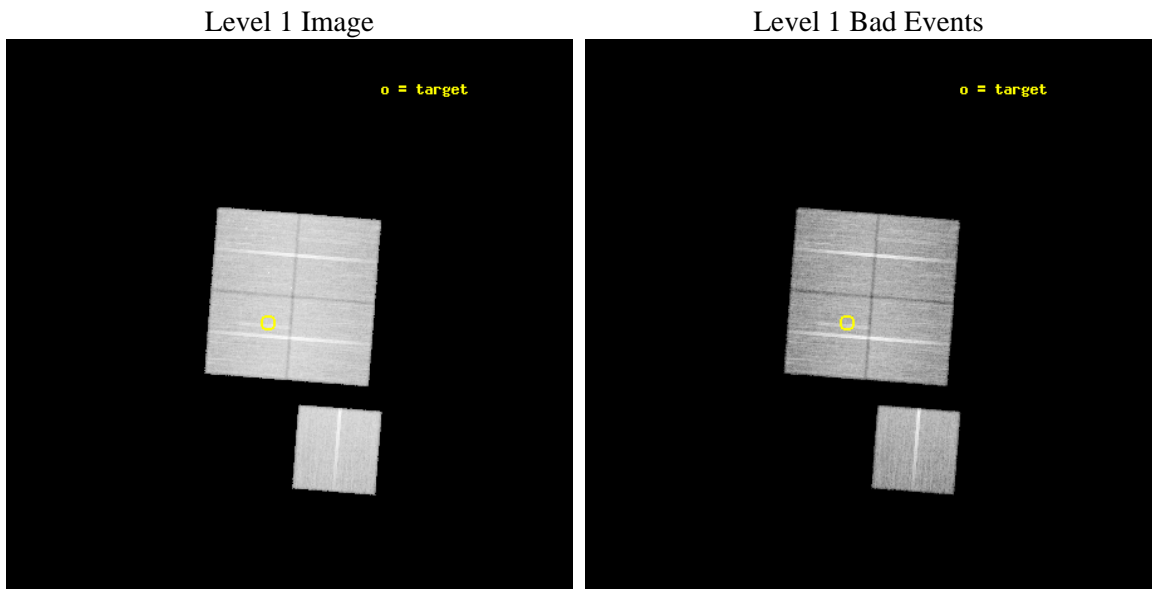
seq_num	800805	Sequence number
obs_id	10924	Observation id
title	Local versus Large Scale : The Active Galaxy Population in High-Redshift Clusters	Proposal title
observer	Prof Lori Lubin	Principal investigator
object	RX J1821.6+6827	Source name
dtcycle	0	&#160
cycle	P	events from which exps? Prim/Second/Both
ra_targ	275.40875	Observer's specified target RA [deg]
dec_targ	68.464444	Observer's specified target Dec [deg]
ra_nom	275.30594118278	Nominal RA [deg]
dec_nom	68.463372058966	Nominal Dec [deg]
roll_nom	184.50431529321	Nominal Roll [deg]
revision	2	Processing version of data
ontime	27667.251974642	Sum of GTIs [s]
livetime	27305.758959259	Livetime [s]
ontime0	27663.987914205	Sum of GTIs [s]
ontime1	27654.606053233	Sum of GTIs [s]
ontime2	27657.788033664	Sum of GTIs [s]
ontime3	27667.251974642	Sum of GTIs [s]
ontime6	27667.087814629	Sum of GTIs [s]
l2events	103946	Number of level 2 events



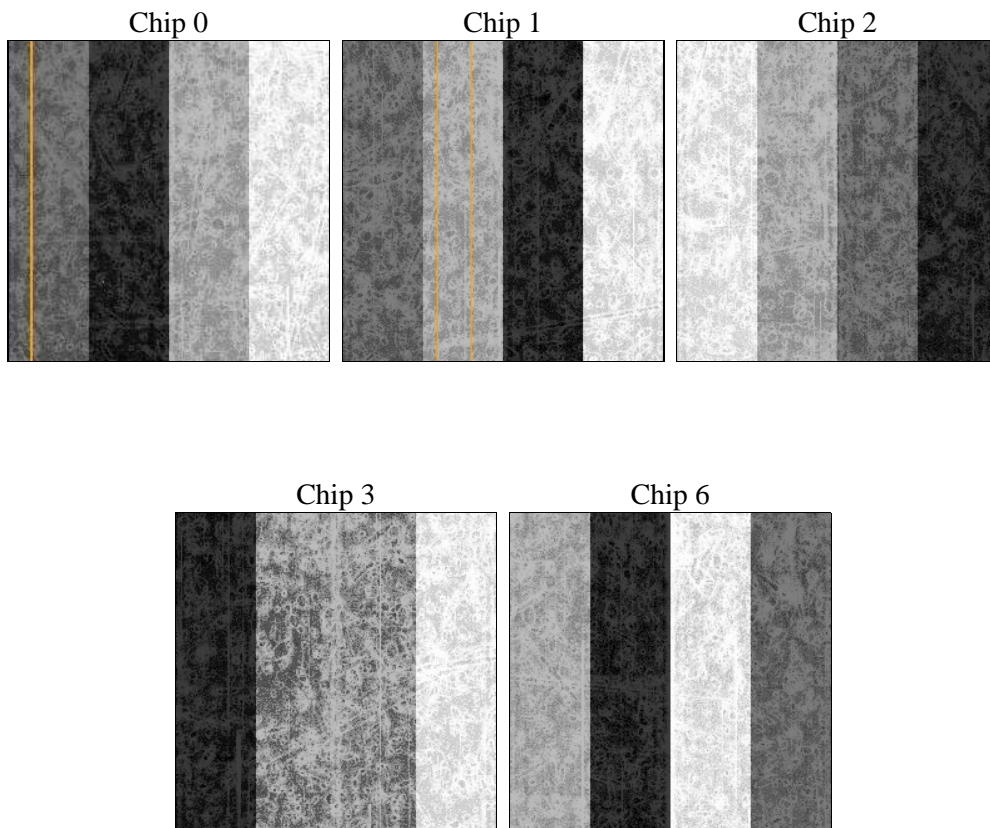
## 2 OBI

### 2.1 OBI

#### 2.1.1 Images



#### 2.1.2 Bias



### 2.1.3 Parameters

obi_num	0	Obi number	sched_exp_time	27626.534000	[s] Scheduled observation exposure time
ascdsver	8.4.5	Processing system revision	ontime	27667.251974642	Sum of GTIs [s]
caldbver	4.4.10	&#160	ontime0	27663.987914205	Sum of GTIs [s]
date	2012-06-09T22:10:15	Date and time of file creation	ontime1	27654.606053233	Sum of GTIs [s]
revision	2	Processing version of data	ontime2	27657.788033664	Sum of GTIs [s]
			ontime3	27667.251974642	Sum of GTIs [s]
			ontime6	27667.087814629	Sum of GTIs [s]
			l1events	1173980	Number of level 1 events

### 2.1.4 Events

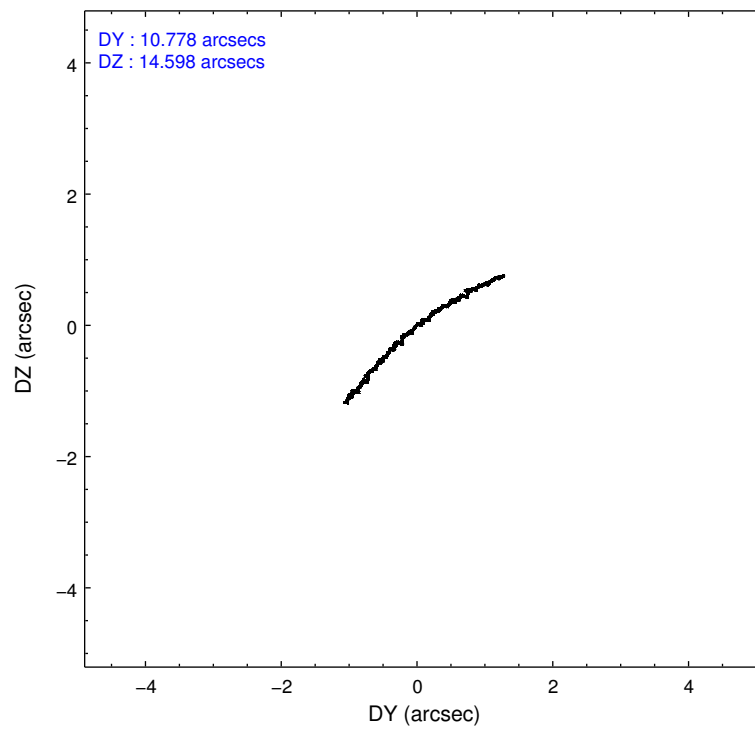
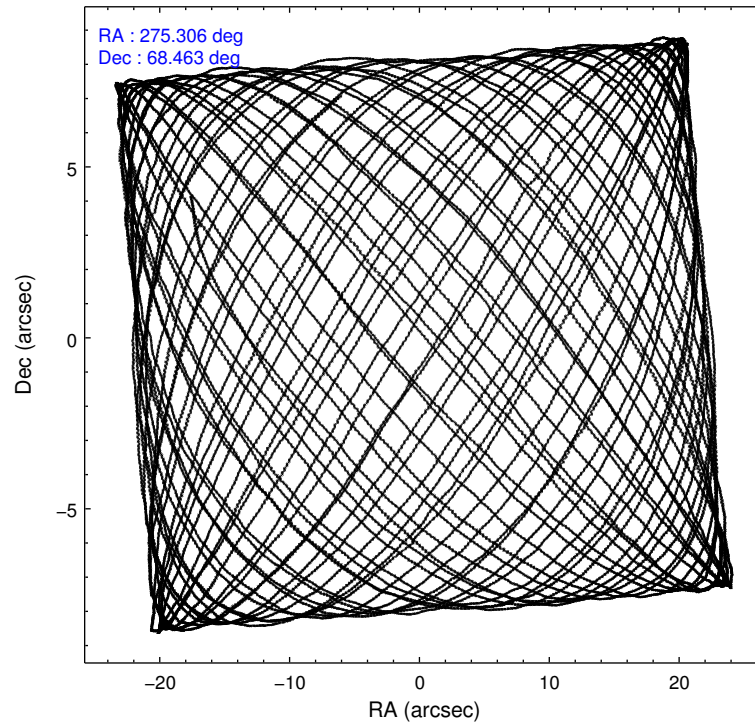
	ccd 0	ccd 1	ccd 2	ccd 3	ccd 6
level 1 events	220888	229863	247068	239429	236732
rejected events	196267	201560	222759	215784	212193
rejected %	88%	87%	90%	90%	89%

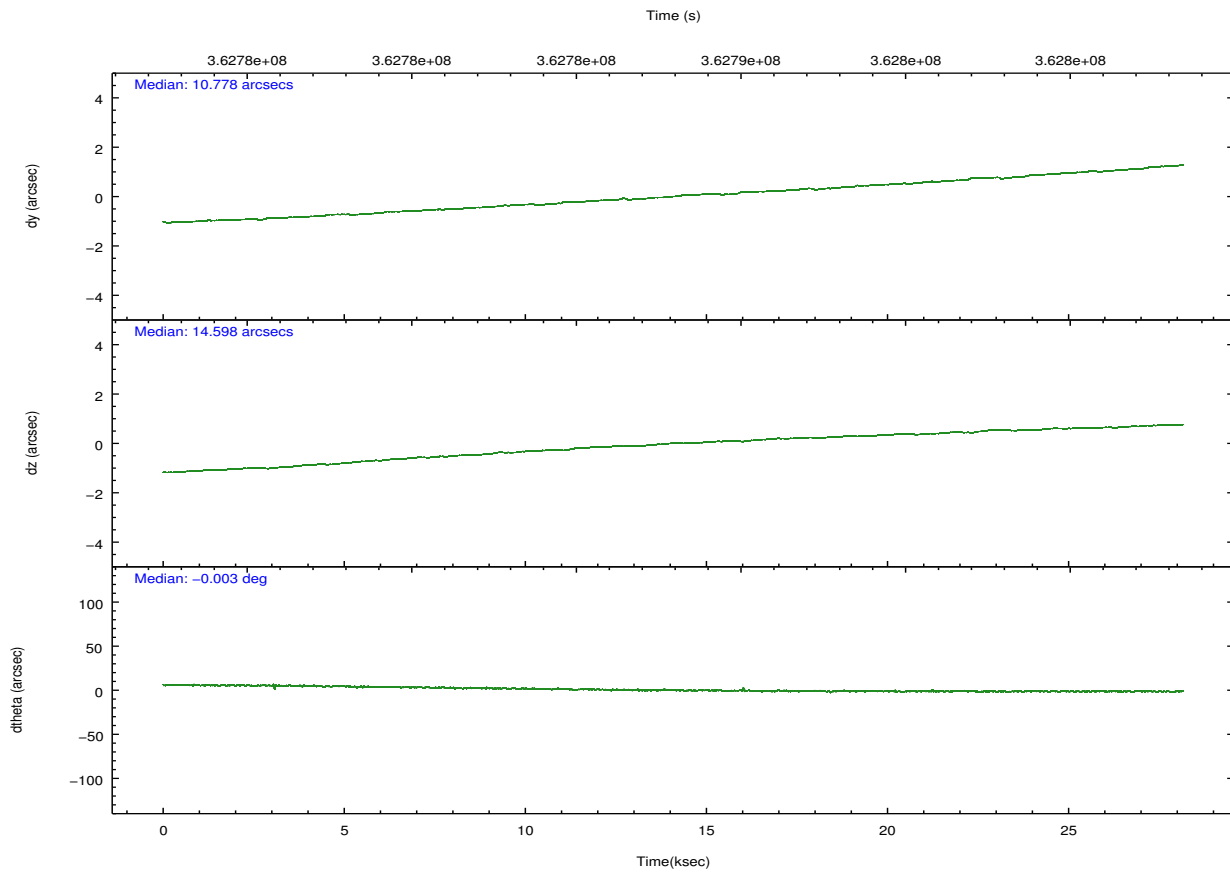
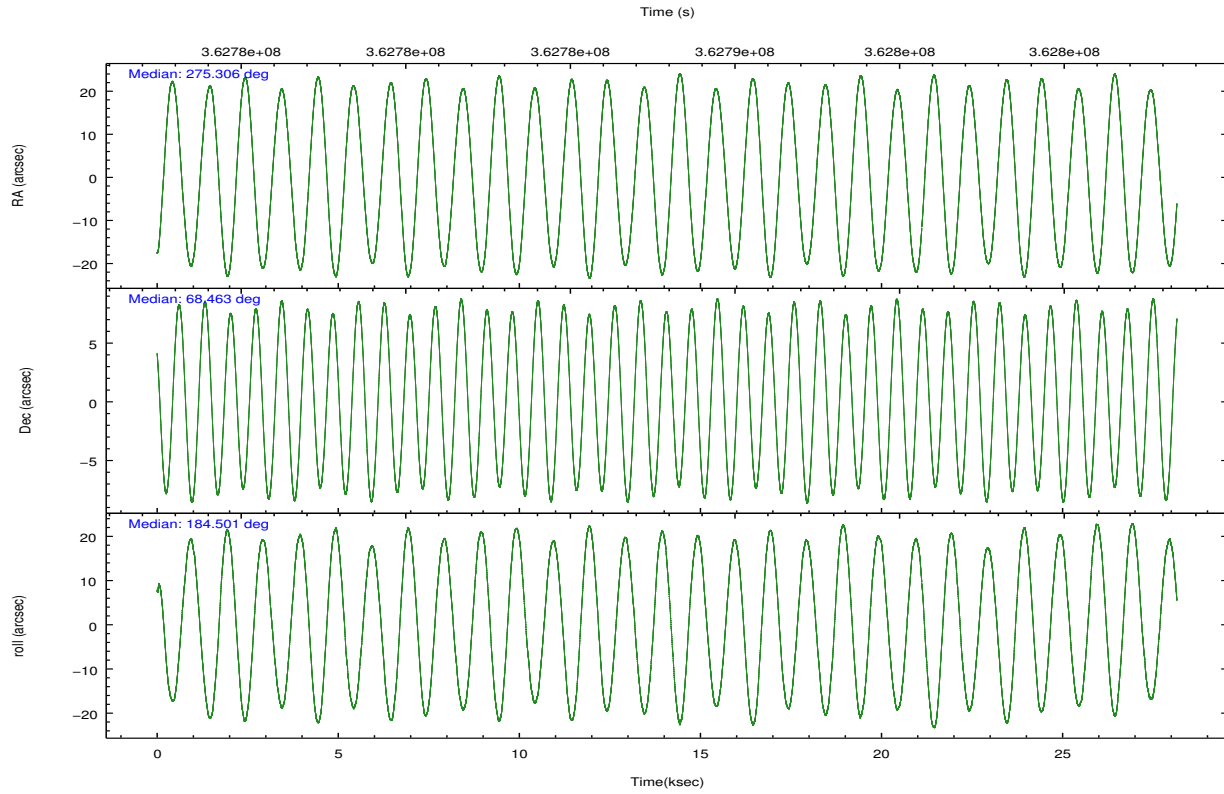
	ccd 0	ccd 1	ccd 2	ccd 3	ccd 6
grade 0 events	8671	10349	8793	8602	8579
	3%	4%	3%	3%	3%
grade 1 events	128	120	158	148	123
	0%	0%	0%	0%	0%
grade 2 events	6056	6565	5960	5026	5365
	2%	2%	2%	2%	2%
grade 3 events	2624	2915	2572	2520	2562
	1%	1%	1%	1%	1%
grade 4 events	2488	2885	2509	2656	2692
	1%	1%	1%	1%	1%
grade 5 events	8645	9473	8396	10063	9826
	3%	4%	3%	4%	4%
grade 6 events	4788	5595	4481	4846	5349
	2%	2%	1%	2%	2%
grade 7 events	187488	191961	214199	205568	202236
	84%	83%	86%	85%	85%

## 2.2 Compared Parameters

Parameter	Planned	Actual	Parameter	Planned	Actual
Instrument	ACIS	ACIS	Obspar format version number	7	7
Detector	ACIS-01236	ACIS-01236	Obspar file type	PREDICTED	ACTUAL
Grating	NONE	NONE	Obspar update status	NONE	UPDATED
Data mode	VFAINT	VFAINT	CCD I0 on	Y	Y
Observation mode	POINTING	POINTING	CCD I1 on	Y	Y
[deg] Pointing RA	275.367573	275.3059411827809	CCD I2 on	Y	Y
[deg] Pointing Dec	68.479044	68.46337205896639	CCD I3 on	Y	Y
[deg] Pointing Roll	184.238295	184.5043152932119	CCD S0 on	N	N
[mm] SIM focus pos	-0.782348	-0.7809083437167272	CCD S1 on	N	N
[mm] SIM defocus	0	0.001439871863259334	CCD S2 on	O1	Y
[mm] SIM translation stage pos	-227.592463	-227.5933067819097	CCD S3 on	N	N
[mm] SIM translation stage offset	-6	-5.999146221020027	CCD S4 on	N	N
[s] Observation start time (MET)	362774386.184000	362773285.62415	CCD S5 on	N	N
Observation start date	2009-06-30T18:38:40	2009-06-30T18:21:25	Number of optional ACIS chips dropped	0	0
[s] Observation end time (MET)	362802012.184000	362802242.9006	On-chip summing requested	N	N
Observation end date	2009-07-01T02:19:06	2009-07-01T02:24:02	Subarray requested	NONE	NONE
Read mode	TIMED	TIMED	Alternating exposures requested	N	N
			[s] Primary exposure time	0.000000	3.1

## 2.3 Aspect



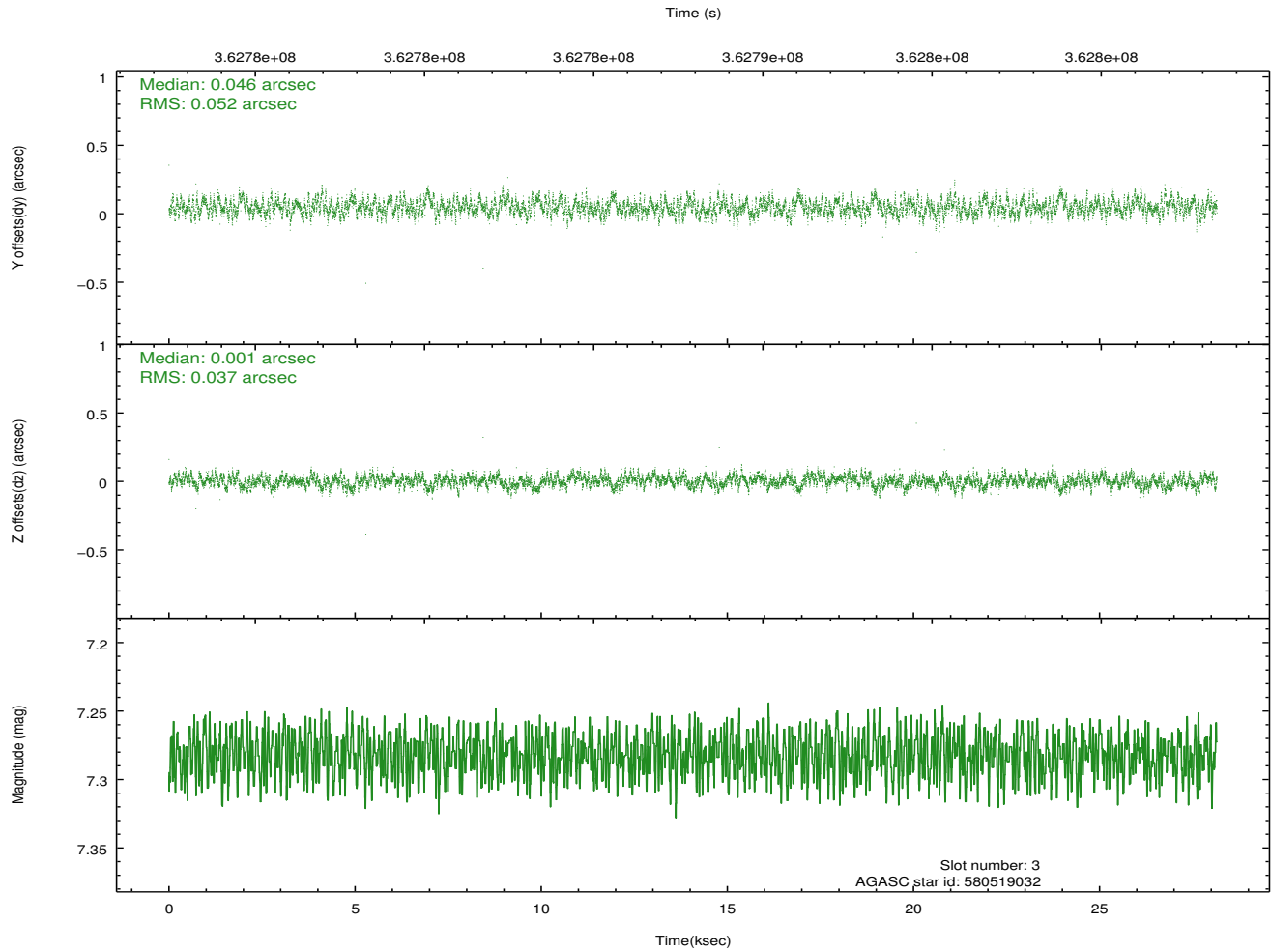
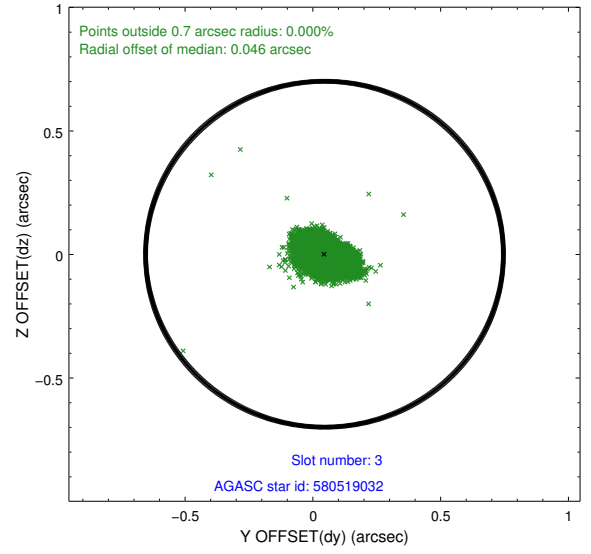
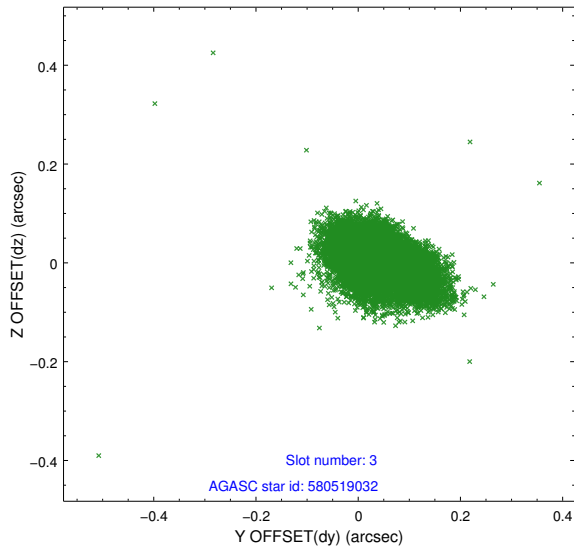


### Slot Statistics

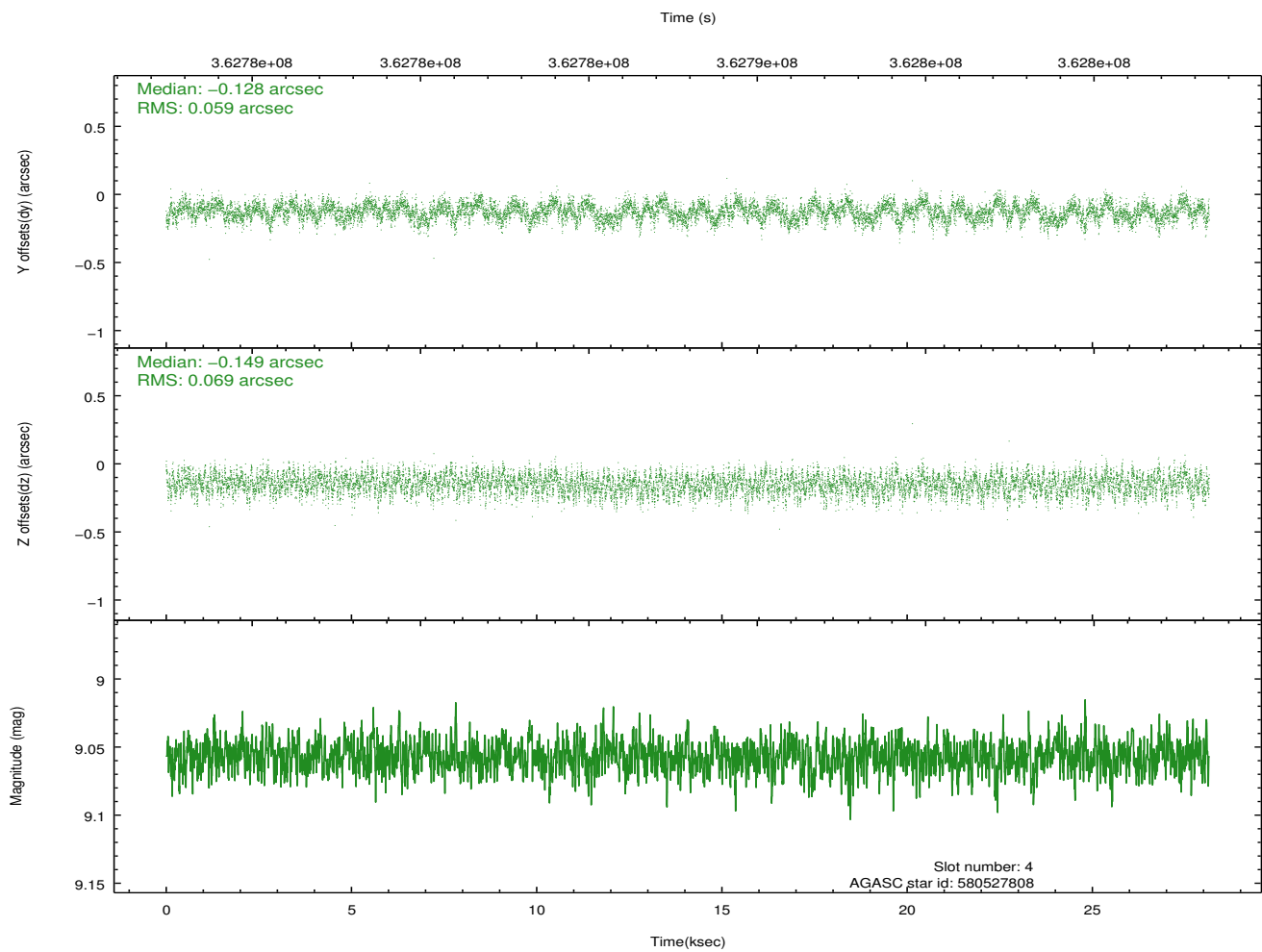
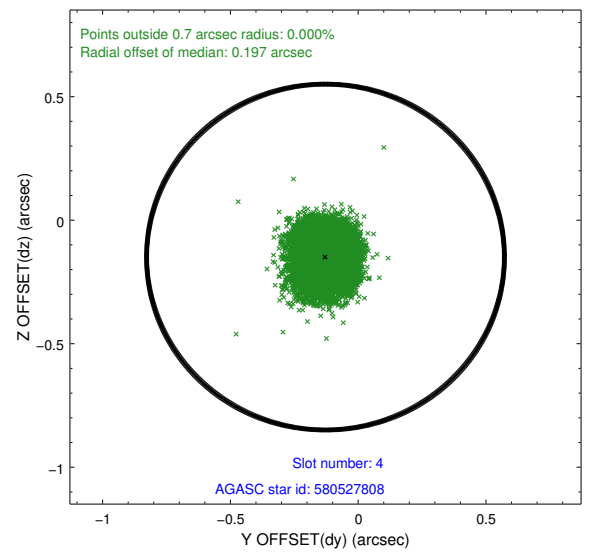
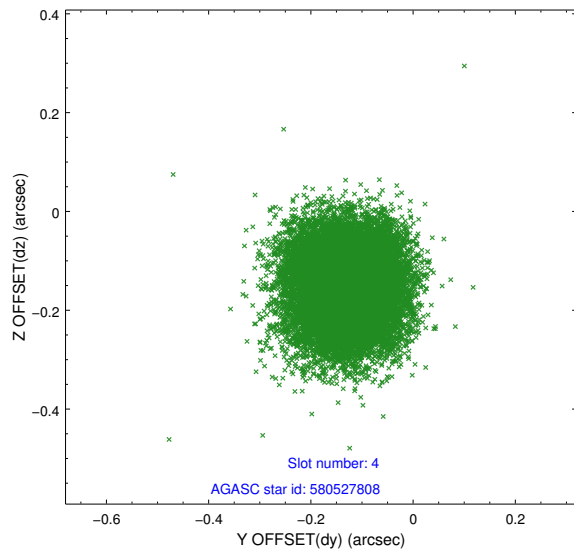
slot	status	id	mag	n_pts	med_dy	med_dz	dr1	dr2	ra	dec	mean_y	mean_z
0	FID	ACIS-I-1	7.07	6868	0.107	-0.048	0.028	0.053	0.000000	0.000000	928.79	-961.26
1	FID	ACIS-I-5	7.06	6866	-0.256	0.102	0.033	0.050	0.000000	0.000000	-1819.66	936.30
2	FID	ACIS-I-6	7.08	6867	0.056	0.012	0.012	0.027	0.000000	0.000000	394.15	1580.84
3	GUIDE	580519032	7.28	13730	0.046	0.001	0.067	0.112	274.244756	68.741454	1391.24	-1062.65
4	GUIDE	580527808	9.06	13725	-0.128	-0.149	0.098	0.152	275.209269	67.917117	363.21	2001.22
5	GUIDE	580532080	9.01	13718	-0.101	-0.079	0.107	0.166	274.203828	68.121720	1650.84	1153.08
6	GUIDE	580662600	9.26	13719	0.122	0.134	0.086	0.142	276.240612	68.272757	-1105.62	818.67
7	GUIDE	580664400	9.08	13721	0.060	0.101	0.109	0.170	276.105004	69.097914	-1109.15	-2157.01

## 2.4 Star Slots

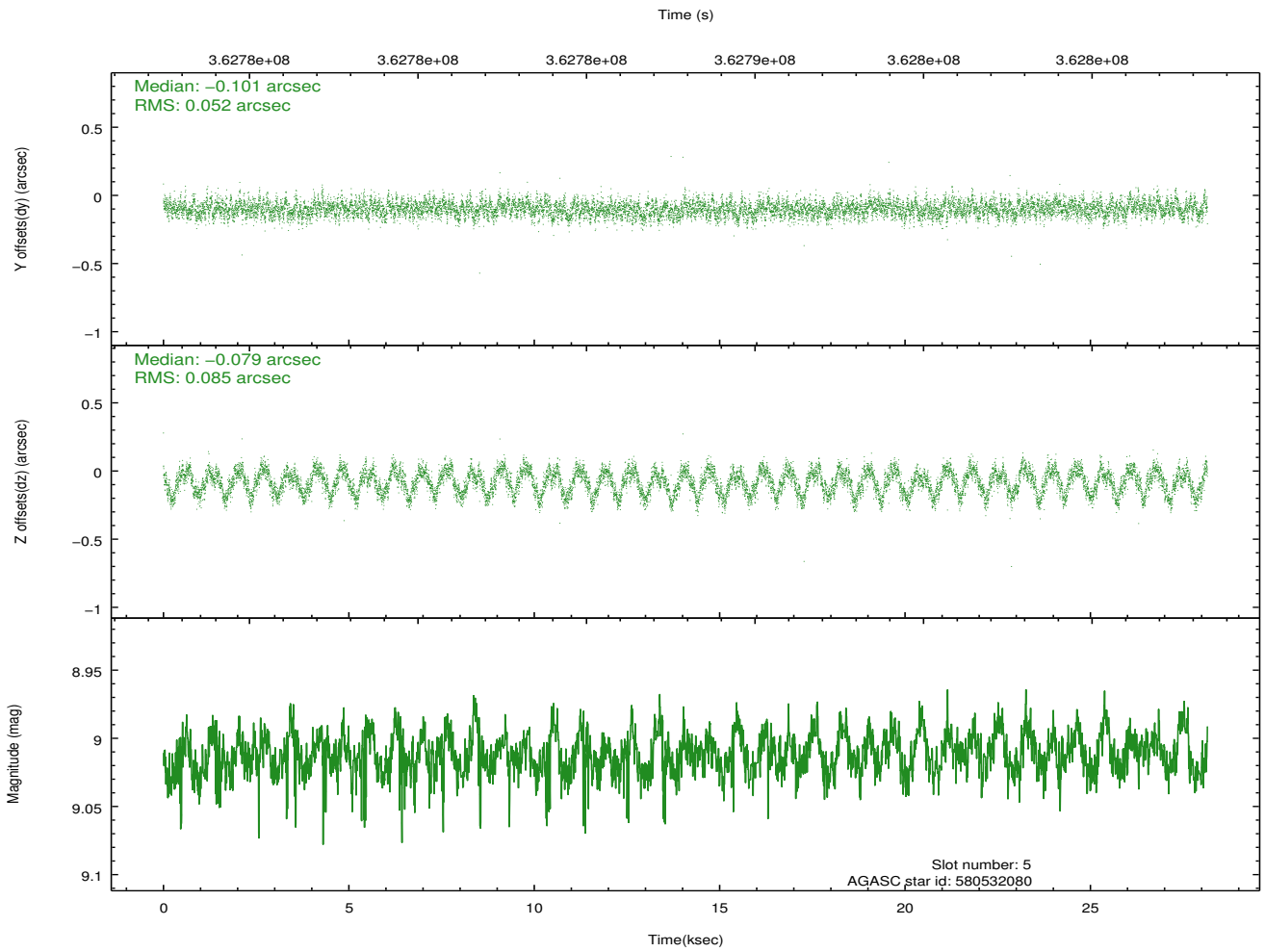
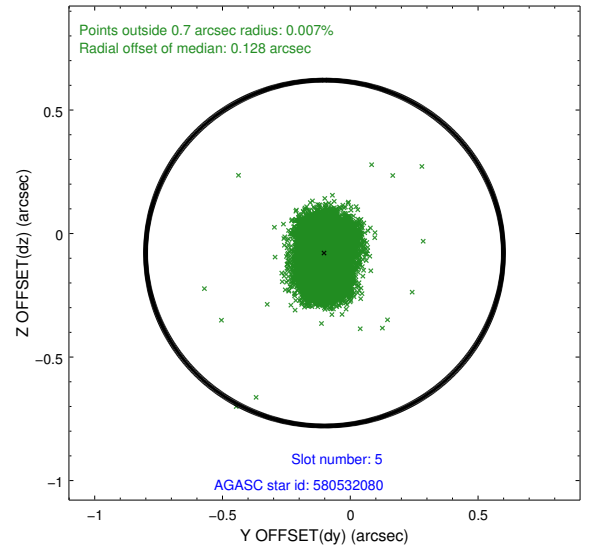
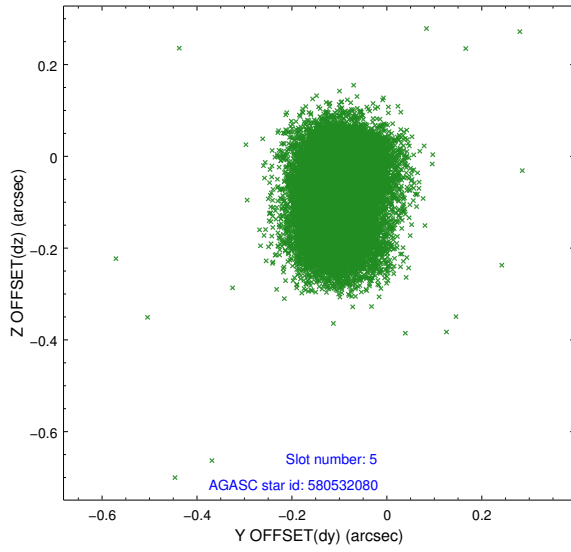
### 2.4.1 Slot 3



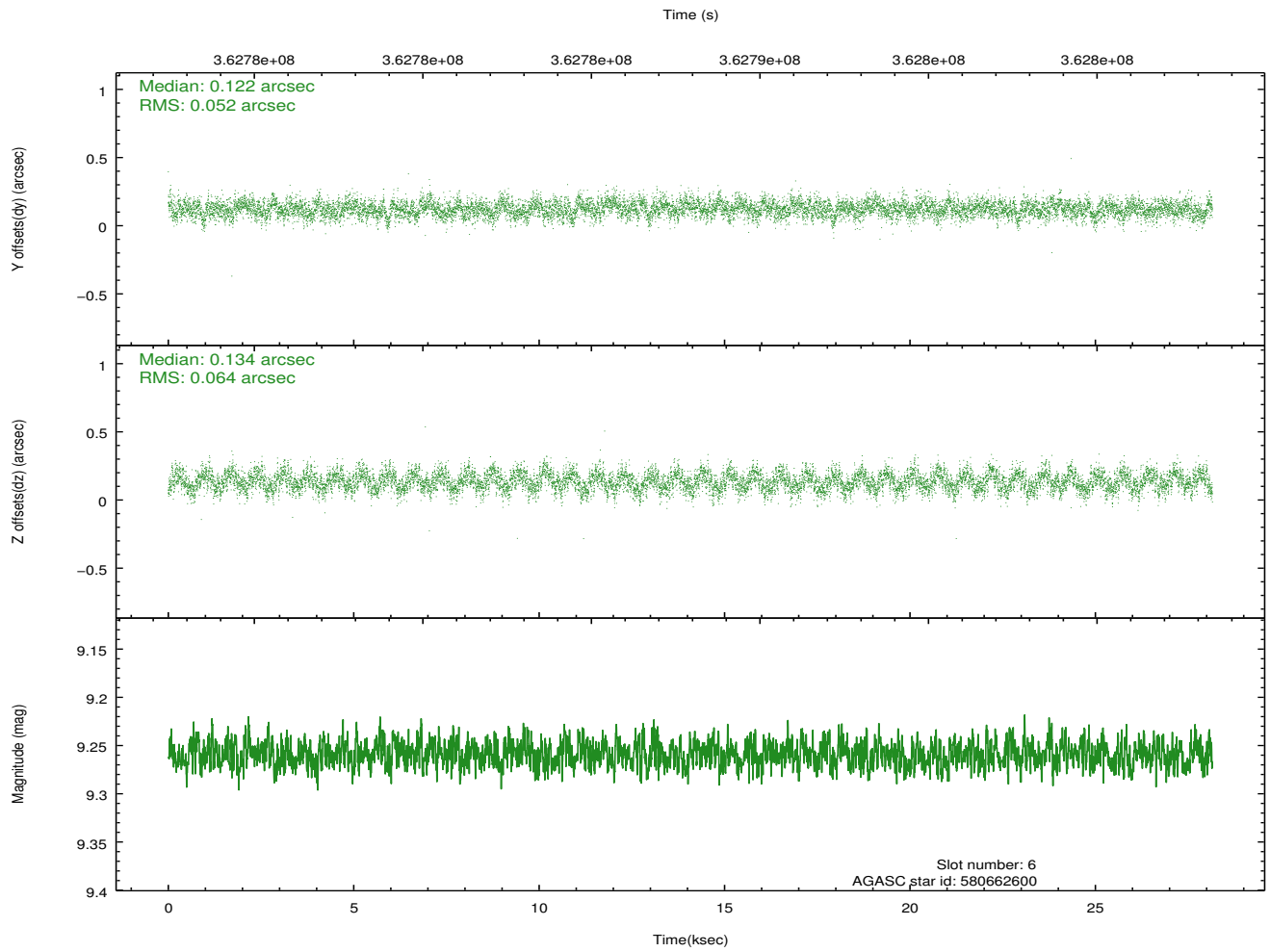
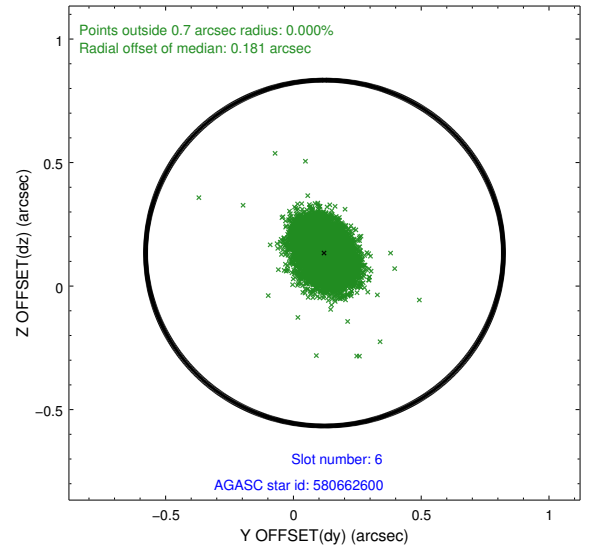
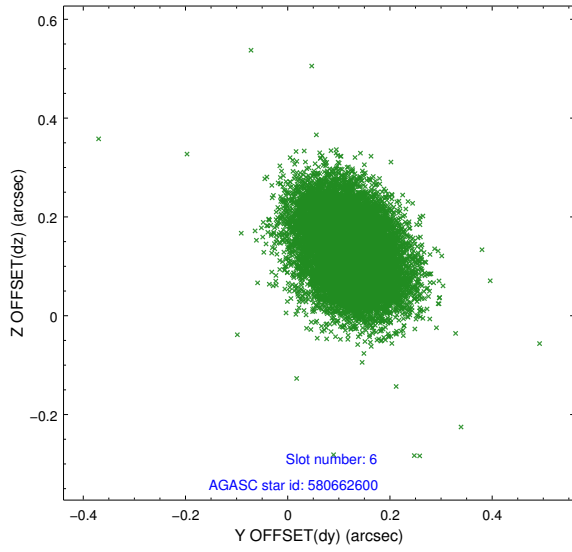
## 2.4.2 Slot 4



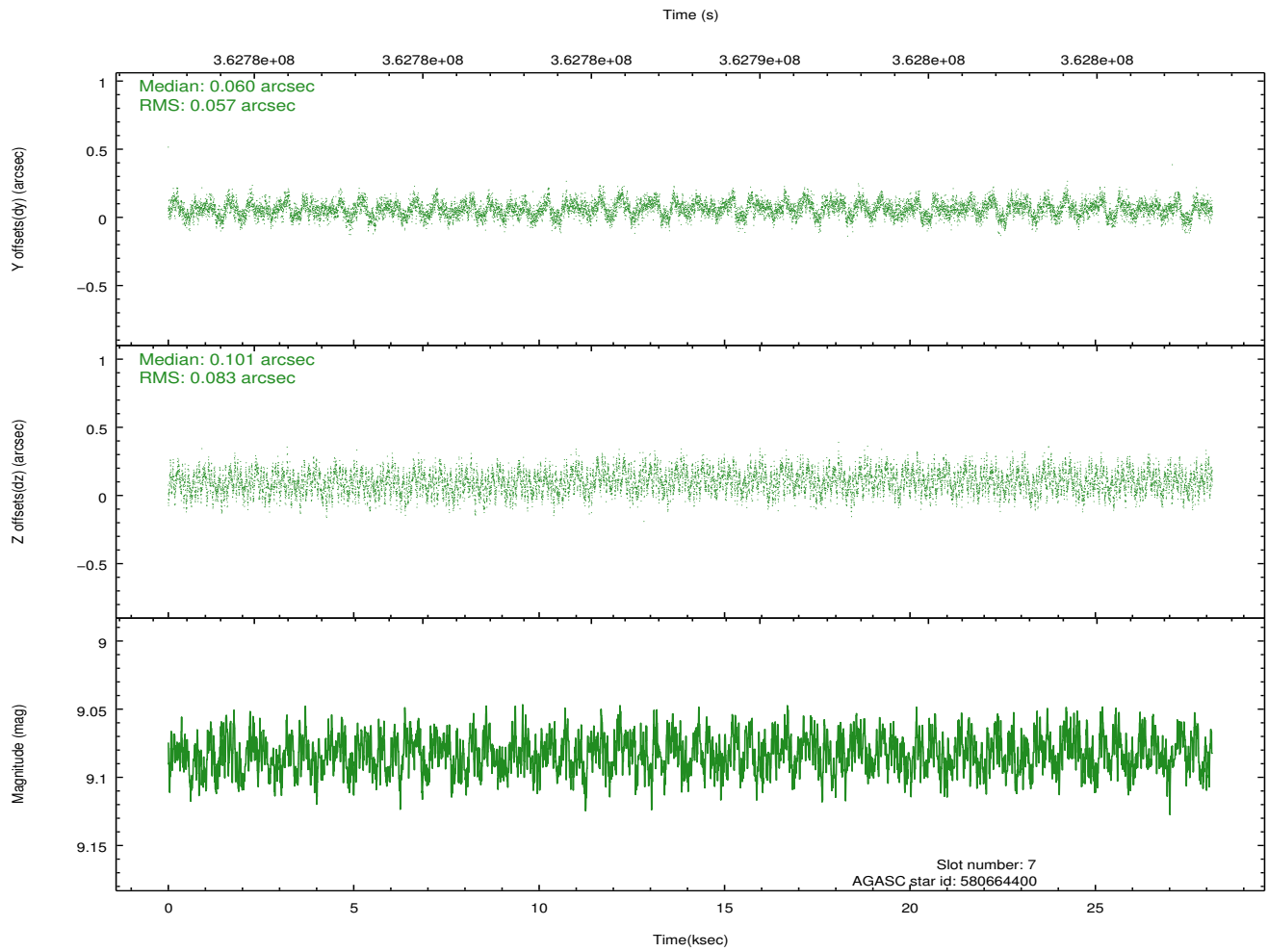
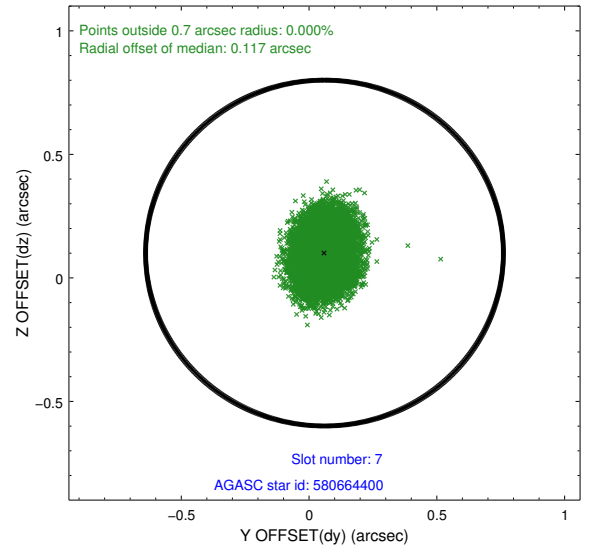
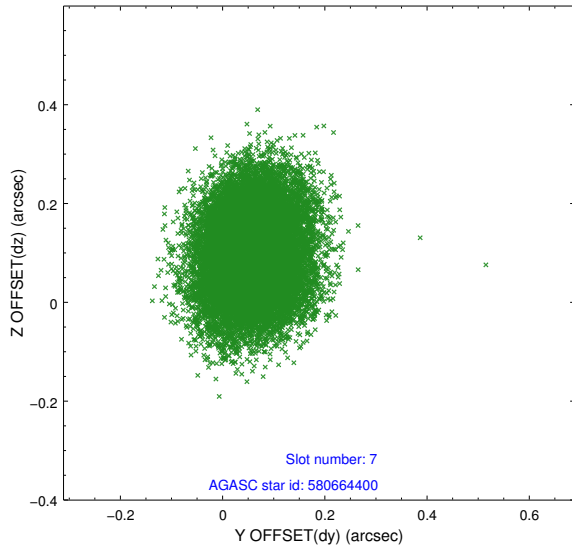
### 2.4.3 Slot 5



### 2.4.4 Slot 6

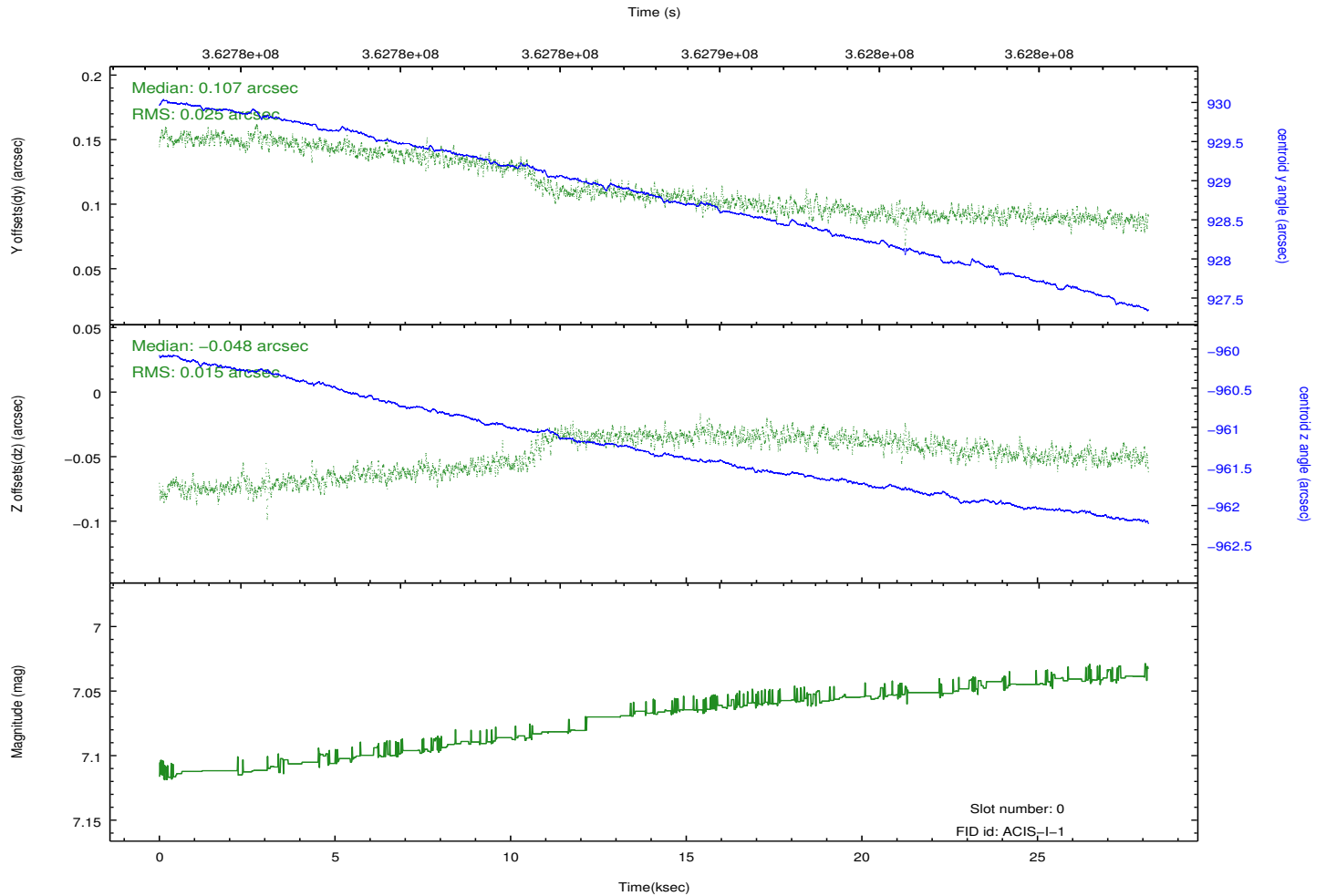
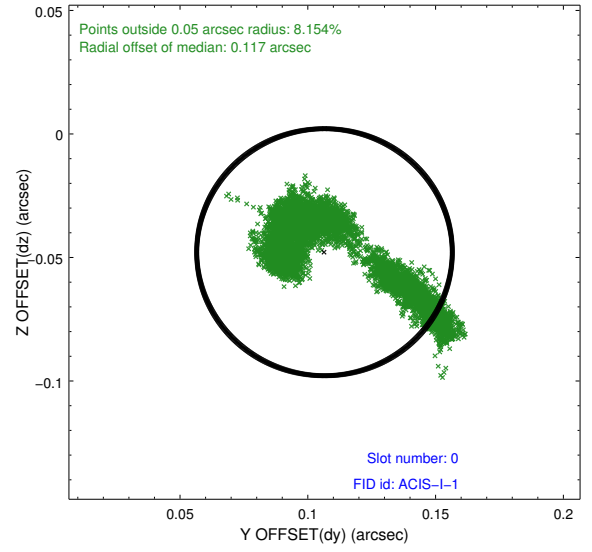
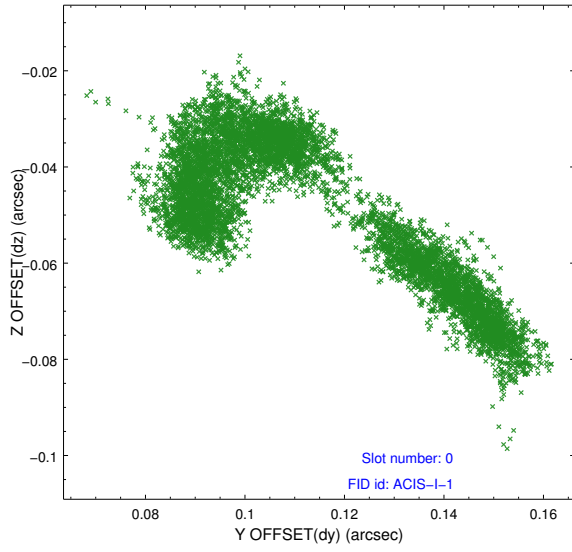


## 2.4.5 Slot 7

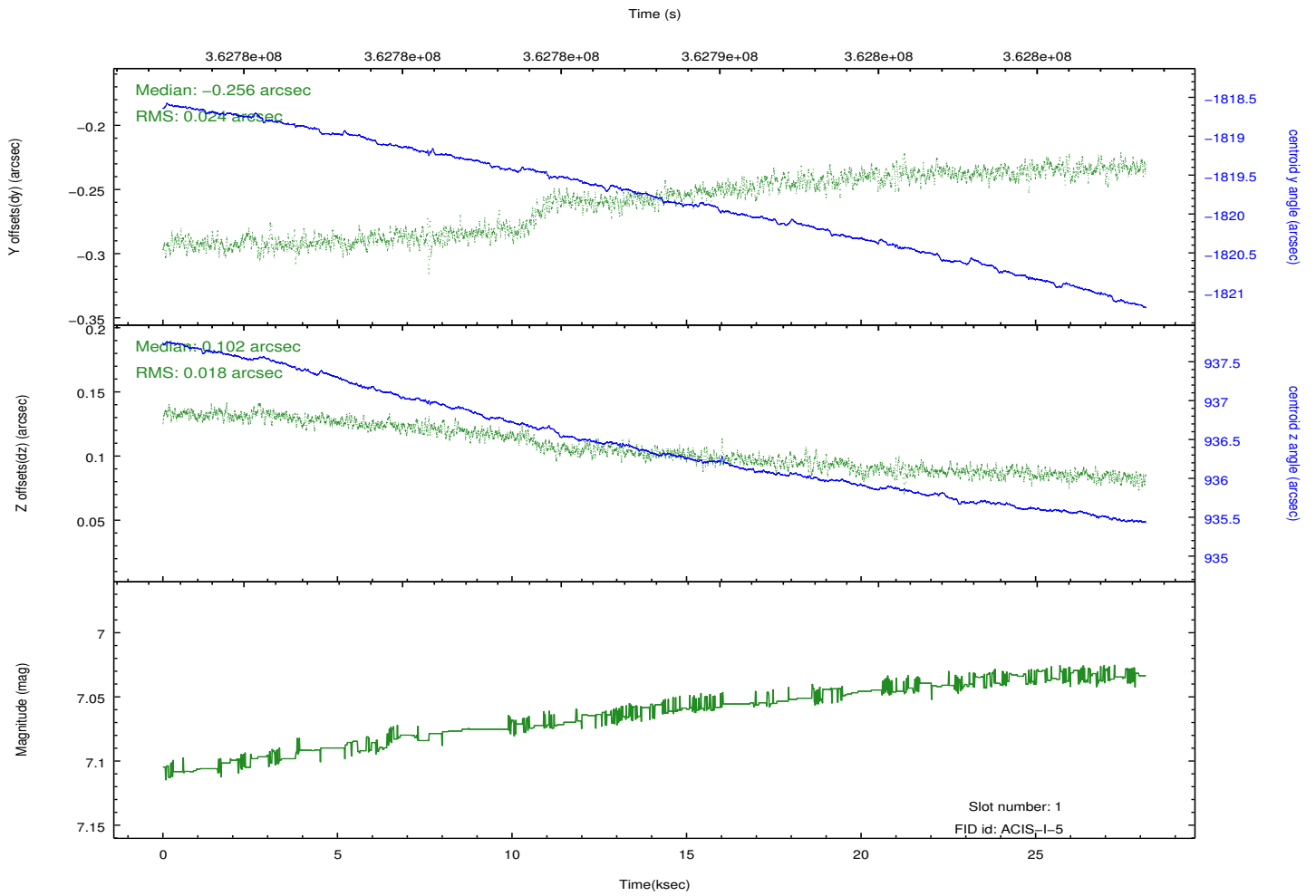
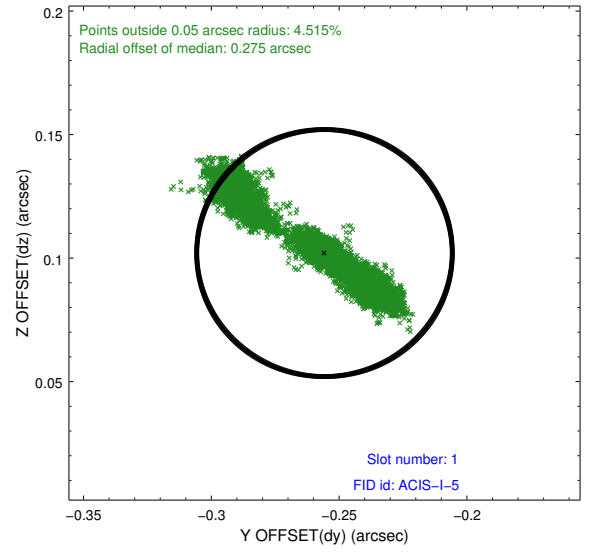
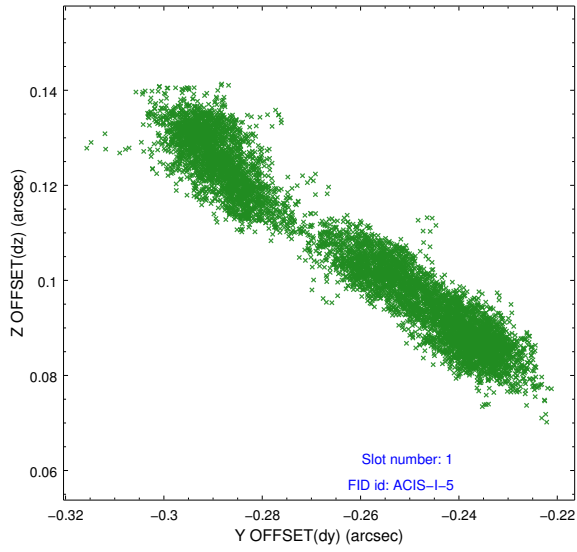


## 2.5 FID Slots

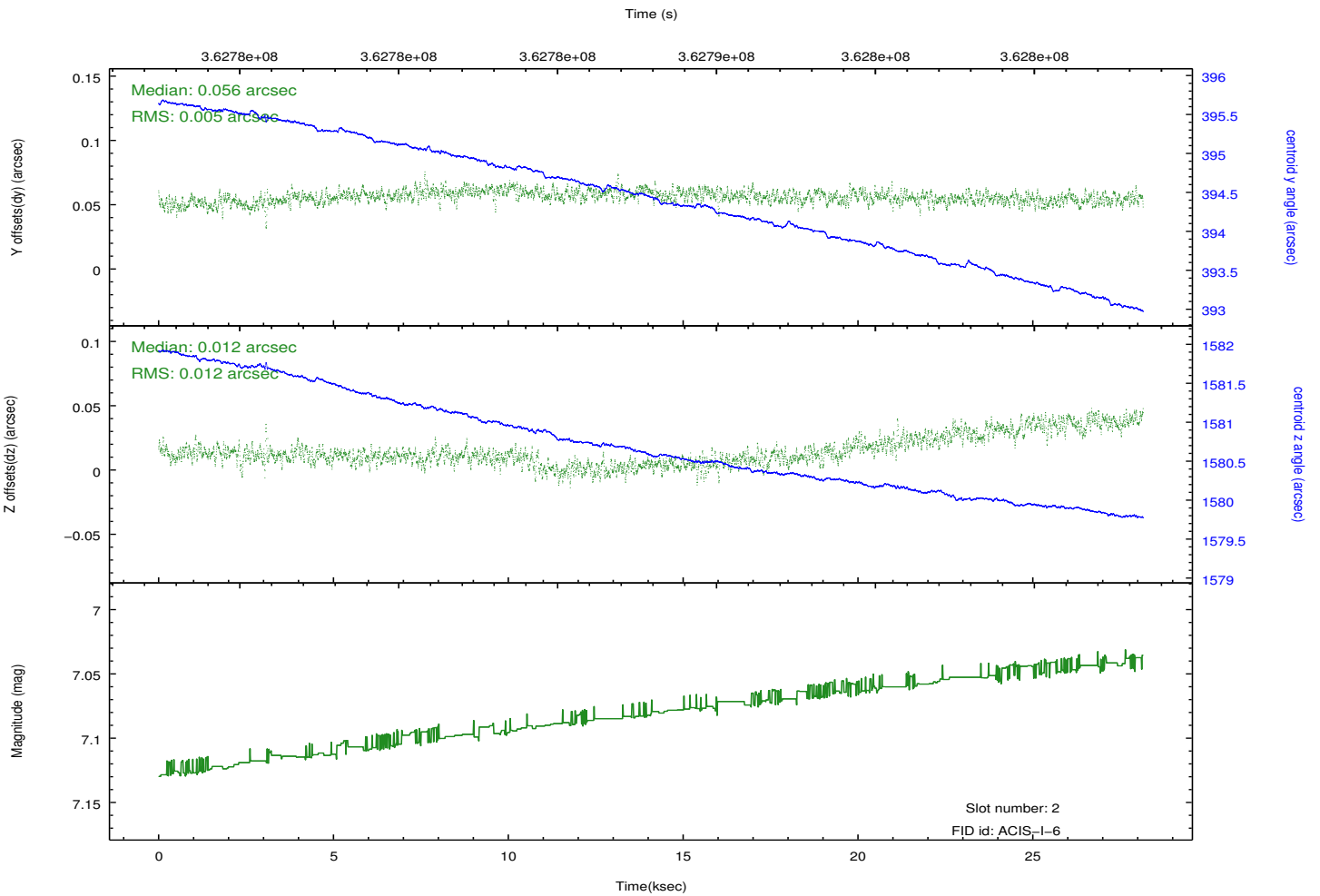
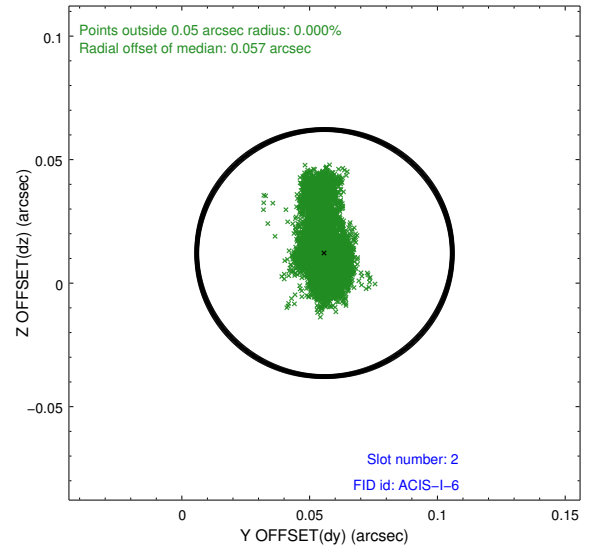
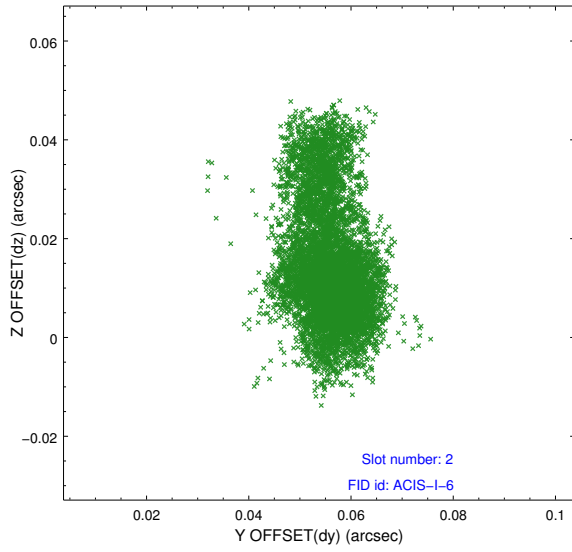
### 2.5.1 Slot 0



## 2.5.2 Slot 1



### 2.5.3 Slot 2



# A Summary

## A.1 Status

V&V Scientist	Jen Lauer
V&V Date (YYYY-MM-DD)	2012.06.13
V&V Edition	1
V&V Disposition and Status	OK
V&V Charge Time	27.6675002

## A.2 Comments

Joint proposal with NOAO.