

V&V Reference Report

L2 ASCDS Version : 8.4.5

Observation 10934 - L2 Version 3
Chandra X-Ray Center

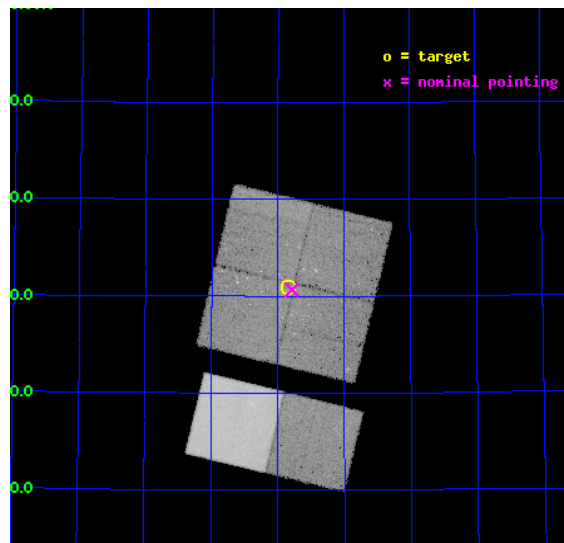
L2 Processing Date : Jul 4 2012

Contents

1	Front	2
2	OBI	3
2.1	OBI	3
2.1.1	Images	3
2.1.2	Bias	3
2.1.3	Parameters	4
2.1.4	Events	4
2.2	Compared Parameters	5
2.3	Aspect	6
2.4	Star Slots	9
2.4.1	Slot 3	9
2.4.2	Slot 4	10
2.4.3	Slot 5	11
2.4.4	Slot 6	12
2.4.5	Slot 7	13
2.5	FID Slots	14
2.5.1	Slot 0	14
2.5.2	Slot 1	15
2.5.3	Slot 2	16
A	Summary	17
A.1	Status	17
A.2	Comments	17

1 Front

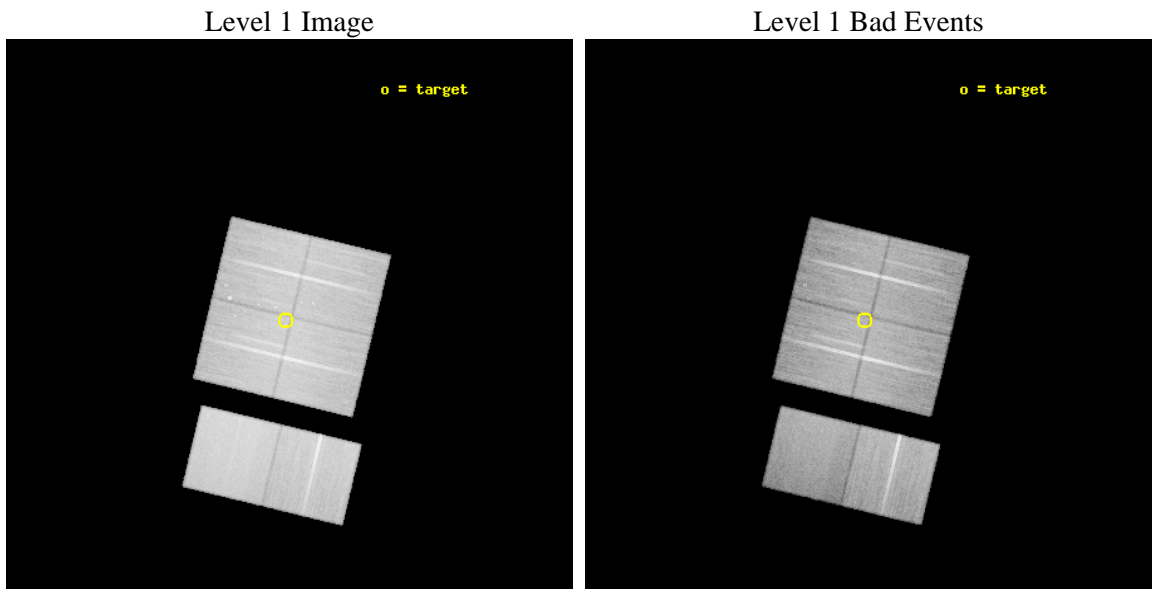
seq_num	200570	Sequence number
obs_id	10934	Observation id
title	Measuring X-ray Heating of Circumstellar Disks: Linking Stellar X-ray Flares With Mid-IR Disk Afterglows	Proposal title
observer	Dr. Kevin Covey	Principal investigator
object	Ceph C	Source name
dtcycle	0	
cycle	P	events from which exps? Prim/Second/Both
ra_targ	346.4625	Observer's specified target RA [deg]
dec_targ	62.515278	Observer's specified target Dec [deg]
ra_nom	346.44745549414	Nominal RA [deg]
dec_nom	62.511150450019	Nominal Dec [deg]
roll_nom	193.49823091809	Nominal Roll [deg]
revision	3	Processing version of data
ontime	44553.599834085	Sum of GTIs [s]
livetime	43989.435326028	Livetime [s]
ontime0	44550.358823717	Sum of GTIs [s]
ontime1	44553.599834085	Sum of GTIs [s]
ontime2	44553.599834085	Sum of GTIs [s]
ontime3	44553.599834085	Sum of GTIs [s]
ontime6	44547.117813528	Sum of GTIs [s]
ontime7	44553.599834085	Sum of GTIs [s]
l2events	323448	Number of level 2 events



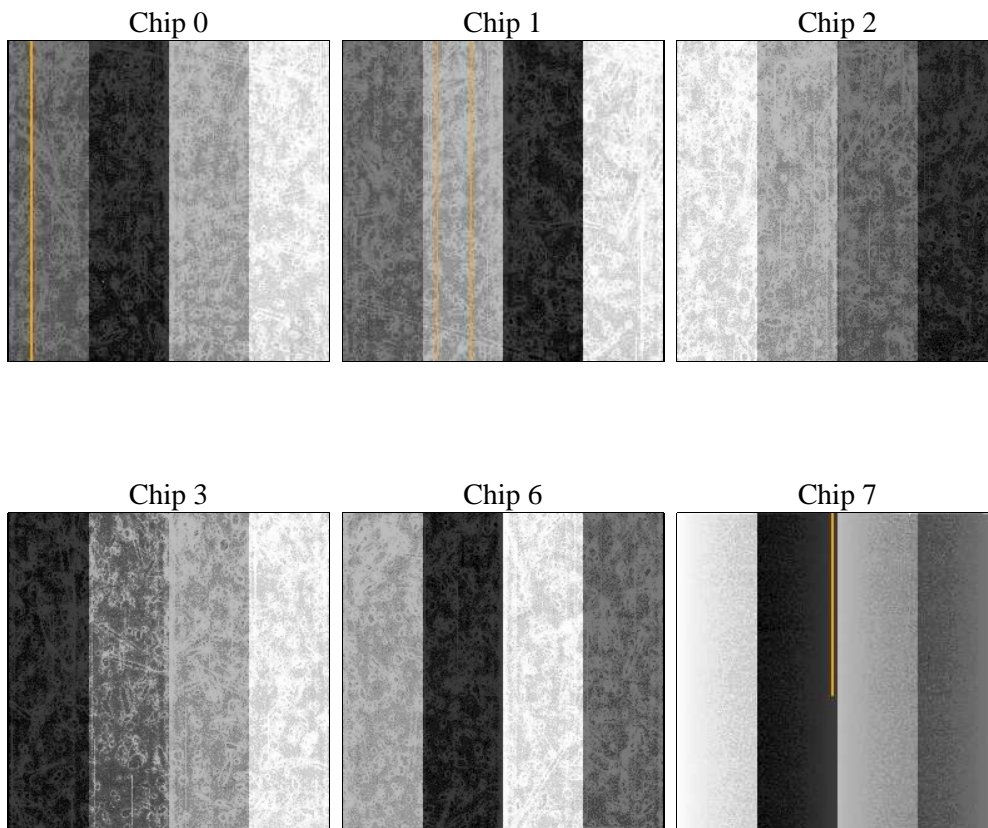
2 OBI

2.1 OBI

2.1.1 Images



2.1.2 Bias



2.1.3 Parameters

obi_num	0	Obi number	sched_exp_time	44500.000000	[s] Scheduled observation exposure time
ascdsver	8.4.5	Processing system revision	ontime	44553.599834085	Sum of GTIs [s]
caldbver	4.5.0	 	ontime0	44550.358823717	Sum of GTIs [s]
date	2012-07-04T01:52:10	Date and time of file creation	ontime1	44553.599834085	Sum of GTIs [s]
revision	3	Processing version of data	ontime2	44553.599834085	Sum of GTIs [s]
			ontime3	44553.599834085	Sum of GTIs [s]
			ontime6	44547.117813528	Sum of GTIs [s]
			ontime7	44553.599834085	Sum of GTIs [s]
			l1events	1987335	Number of level 1 events

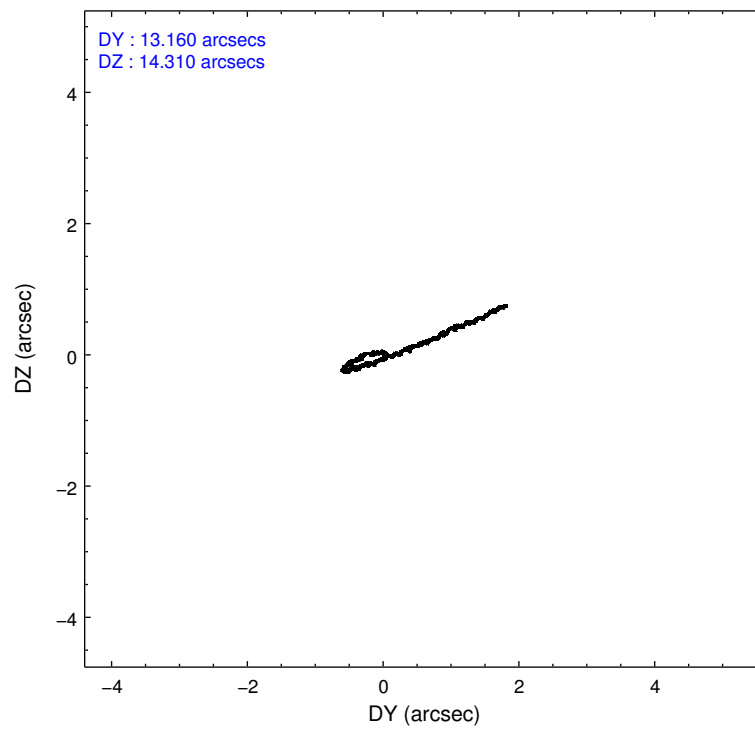
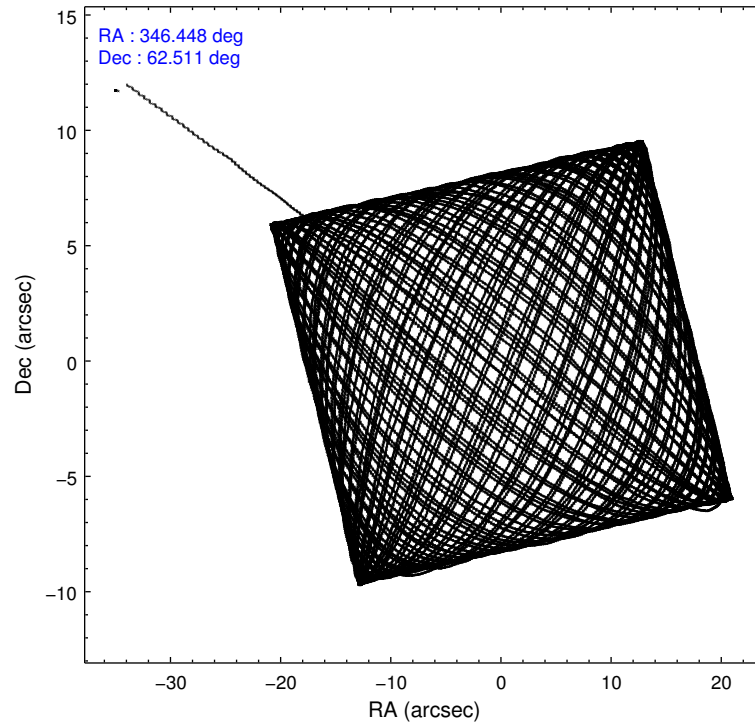
2.1.4 Events

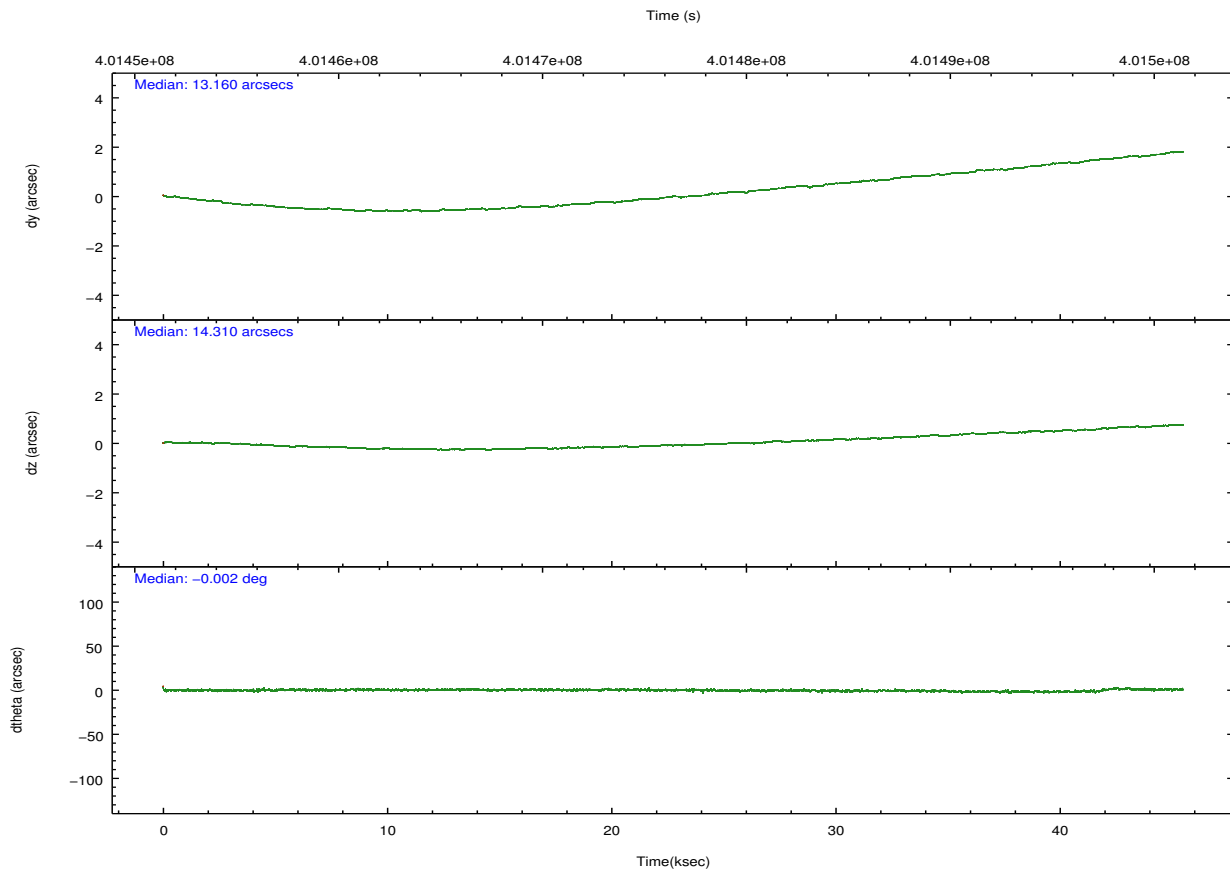
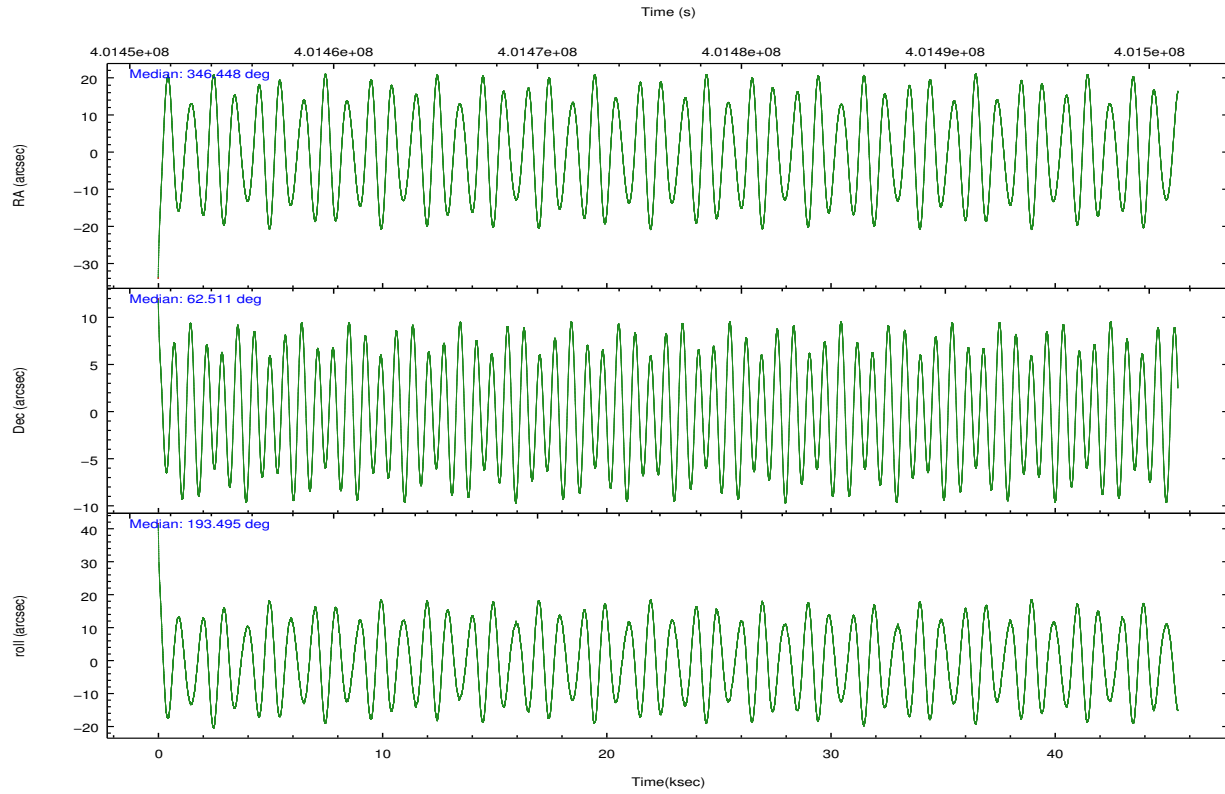
	ccd 0	ccd 1	ccd 2	ccd 3	ccd 6	ccd 7		ccd 0	ccd 1	ccd 2	ccd 3	ccd 6	ccd 7
level 1 events	300094	307515	326299	323588	334562	395277	grade 0 events	12387	16057	12438	12604	12289	15896
rejected events	264815	265974	291803	289235	298443	218372		4%	5%	3%	3%	3%	4%
rejected %	88%	86%	89%	89%	89%	55%	grade 1 events	195	381	186	204	194	470
								0%	0%	0%	0%	0%	0%
							grade 2 events	8685	9426	8419	7605	8107	36176
								2%	3%	2%	2%	2%	9%
							grade 3 events	3822	4073	3577	3630	3790	15597
								1%	1%	1%	1%	1%	3%
							grade 4 events	3530	3931	3614	3683	3661	15439
								1%	1%	1%	1%	1%	3%
							grade 5 events	13032	14004	12568	14711	15009	41526
								4%	4%	3%	4%	4%	10%
							grade 6 events	6855	8054	6452	6838	8277	93804
								2%	2%	1%	2%	2%	23%
							grade 7 events	251588	251589	279045	274313	283235	176369
								83%	81%	85%	84%	84%	44%

2.2 Compared Parameters

Parameter	Planned	Actual	Parameter	Planned	Actual
Instrument	ACIS	ACIS	Obspar format version number	7	7
Detector	ACIS-012367	ACIS-012367	Obspar file type	PREDICTED	ACTUAL
Grating	NONE	NONE	Obspar update status	NONE	UPDATED
Data mode	FAINT	FAINT	CCD I0 on	Y	Y
Observation mode	POINTING	POINTING	CCD I1 on	Y	Y
[deg] Pointing RA	346.490535	346.4474554941417	CCD I2 on	Y	Y
[deg] Pointing Dec	62.530141	62.51115045001936	CCD I3 on	Y	Y
[deg] Pointing Roll	193.251325	193.4982309180939	CCD S0 on	N	N
[mm] SIM focus pos	-0.782348	-0.7809083437167272	CCD S1 on	N	N
[mm] SIM defocus	0	0.001439871863259334	CCD S2 on	O1	Y
[mm] SIM translation stage pos	-233.592463	-233.5874344608287	CCD S3 on	O2	Y
[mm] SIM translation stage offset	0	-0.005018542100998502	CCD S4 on	N	N
[s] Observation start time (MET)	401454638.184000	401452959.20823	CCD S5 on	N	N
Observation start date	2010-09-21T11:09:32	2010-09-21T10:42:39	Number of optional ACIS chips dropped	0	0
[s] Observation end time (MET)	401499138.184000	401499928.29814	On-chip summing requested	N	N
Observation end date	2010-09-21T23:31:12	2010-09-21T23:45:28	Subarray requested	NONE	NONE
Read mode	TIMED	TIMED	Alternating exposures requested	N	N
			[s] Primary exposure time	0.000000	3.2

2.3 Aspect



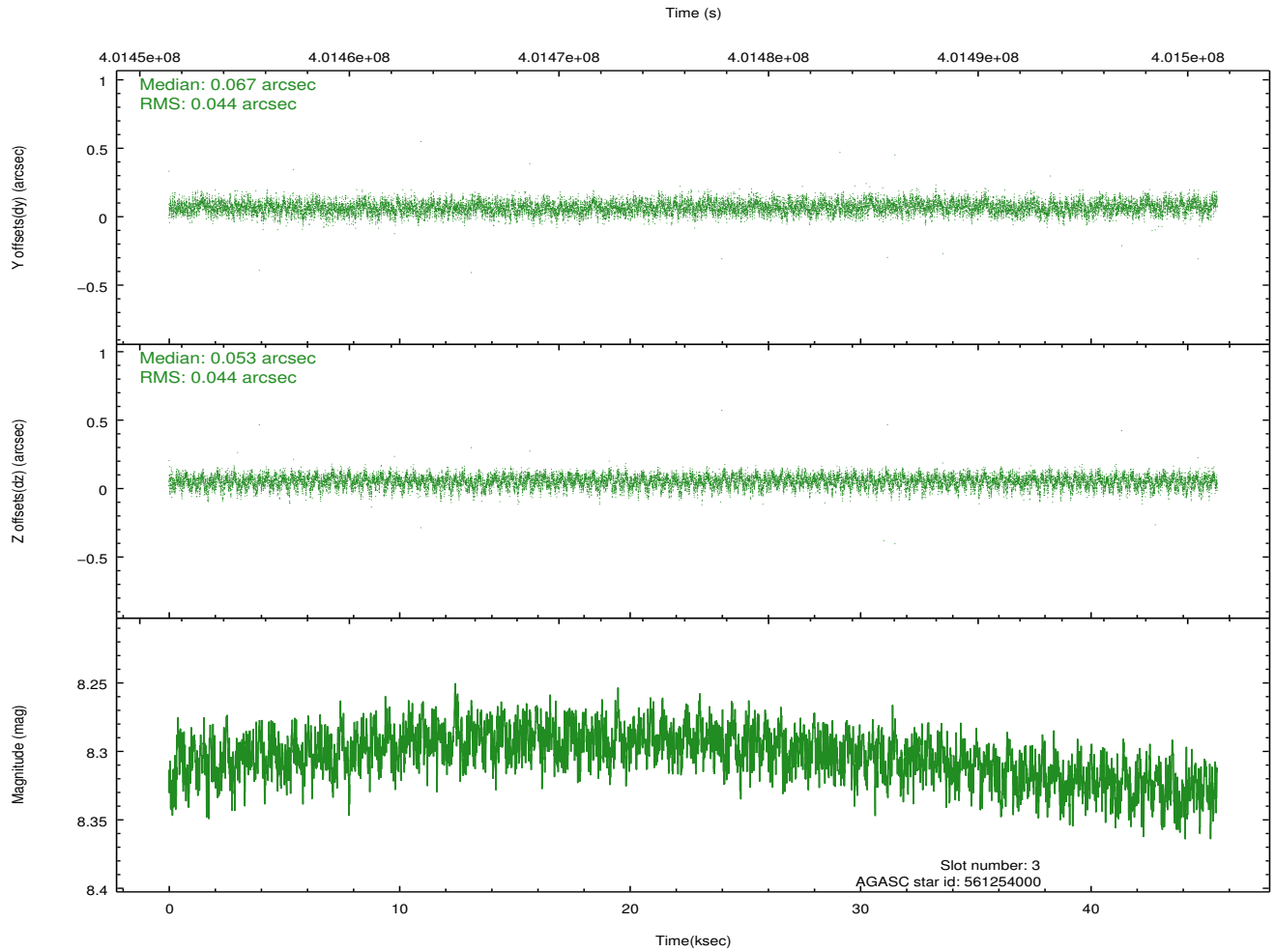
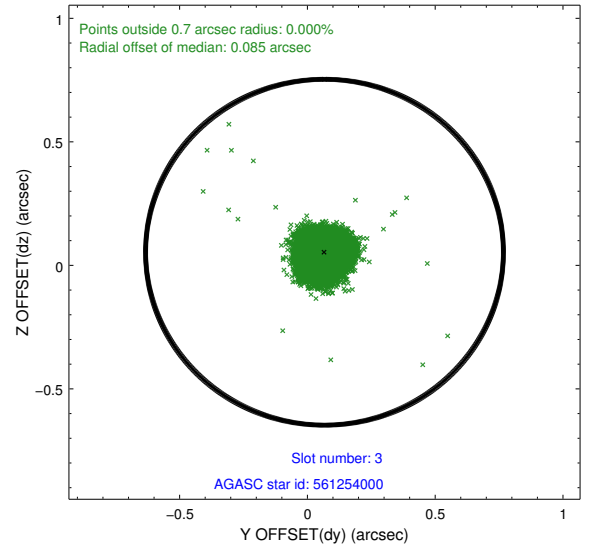
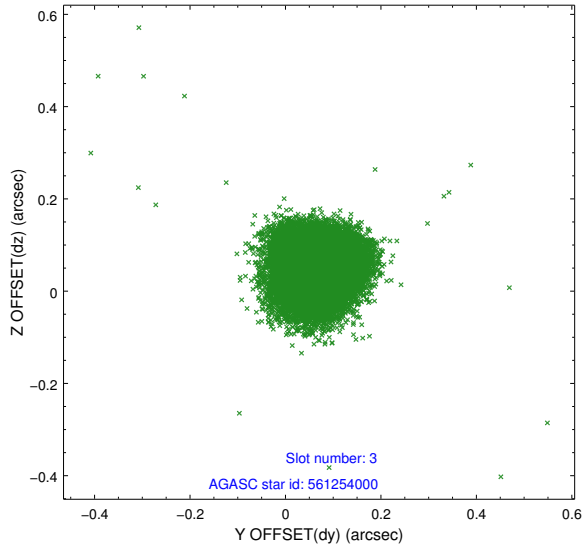


Slot Statistics

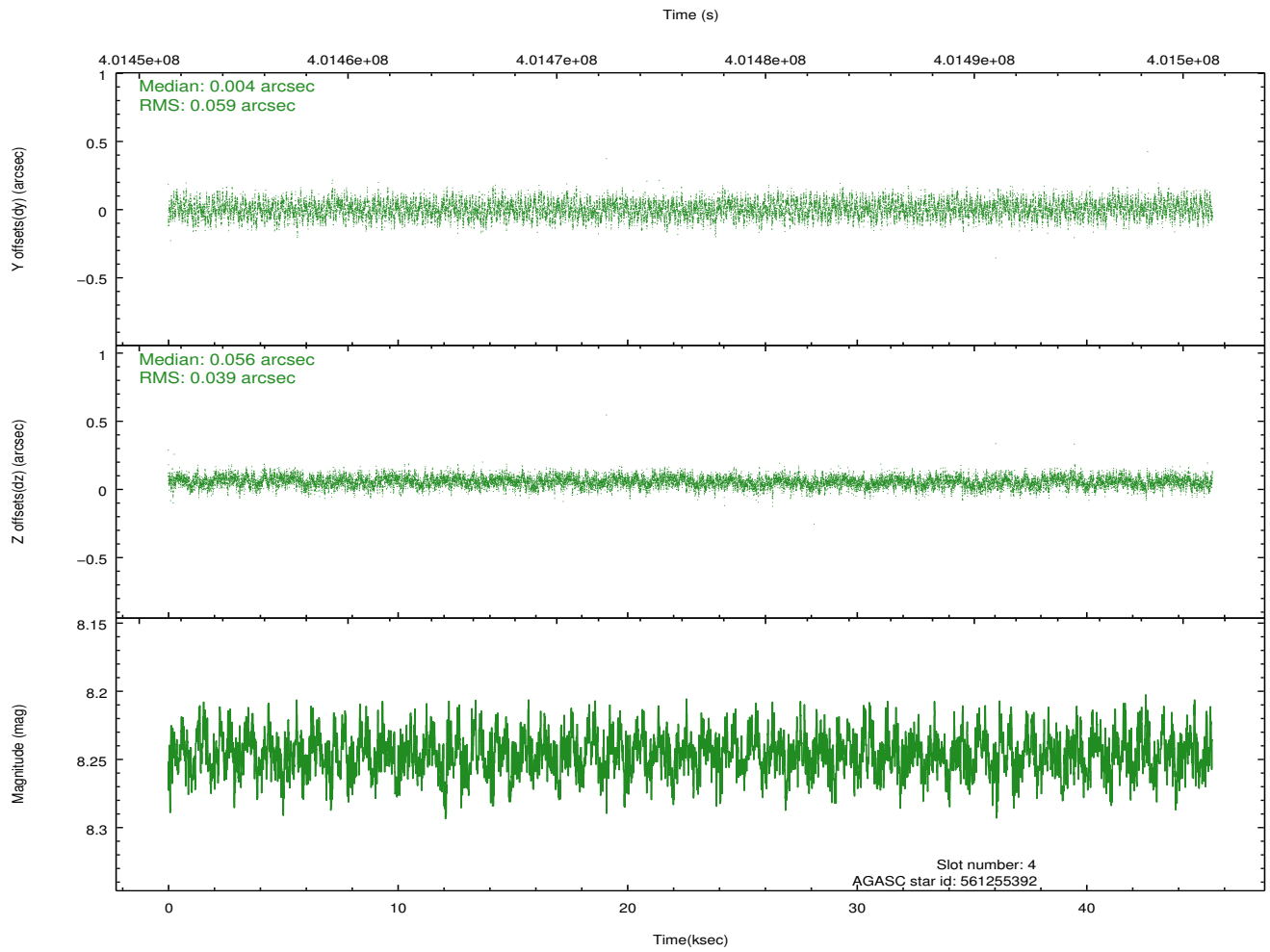
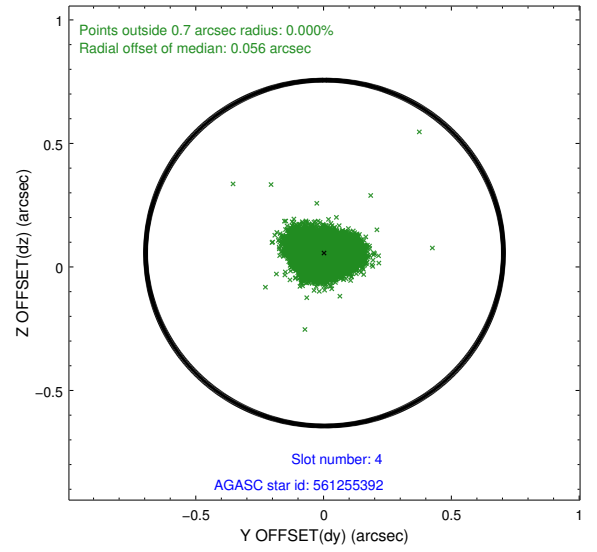
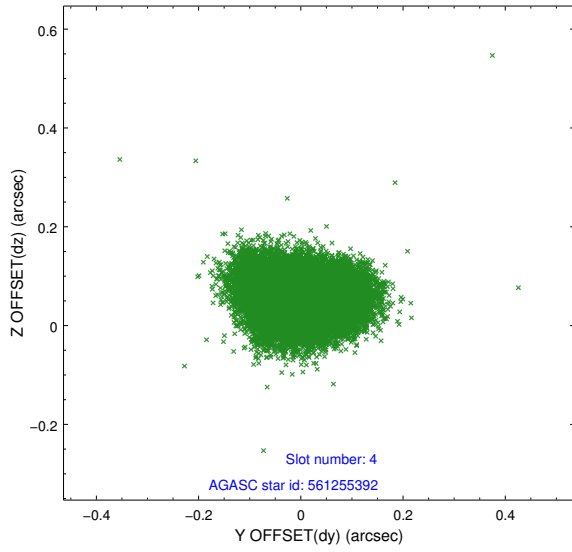
slot	status	id	mag	n_pts	med_dy	med_dz	dr1	dr2	ra	dec	mean_y	mean_z
0	FID	ACIS-I-2	6.97	11094	-0.082	-0.039	0.014	0.025	0.000000	0.000000	-768.15	-844.38
1	FID	ACIS-I-4	6.97	11093	0.193	0.061	0.018	0.035	0.000000	0.000000	2146.17	1061.91
2	FID	ACIS-I-5	7.05	11093	-0.213	0.046	0.016	0.025	0.000000	0.000000	-1822.12	1059.71
3	GUIDE	561254000	8.30	22176	0.067	0.053	0.066	0.106	345.523435	62.512083	1576.66	-316.27
4	GUIDE	561255392	8.25	22183	0.004	0.056	0.075	0.121	345.299730	62.941959	1554.65	-1907.12
5	GUIDE	561388528	6.91	22186	-0.024	0.009	0.054	0.088	347.242300	62.908636	-1513.02	-1050.42
6	GUIDE	561390176	7.26	22183	0.008	-0.014	0.058	0.096	347.244727	62.815566	-1444.17	-722.61
7	GUIDE	561253424	9.15	22105	-0.057	-0.107	0.079	0.130	345.322930	62.070880	2291.34	1141.13

2.4 Star Slots

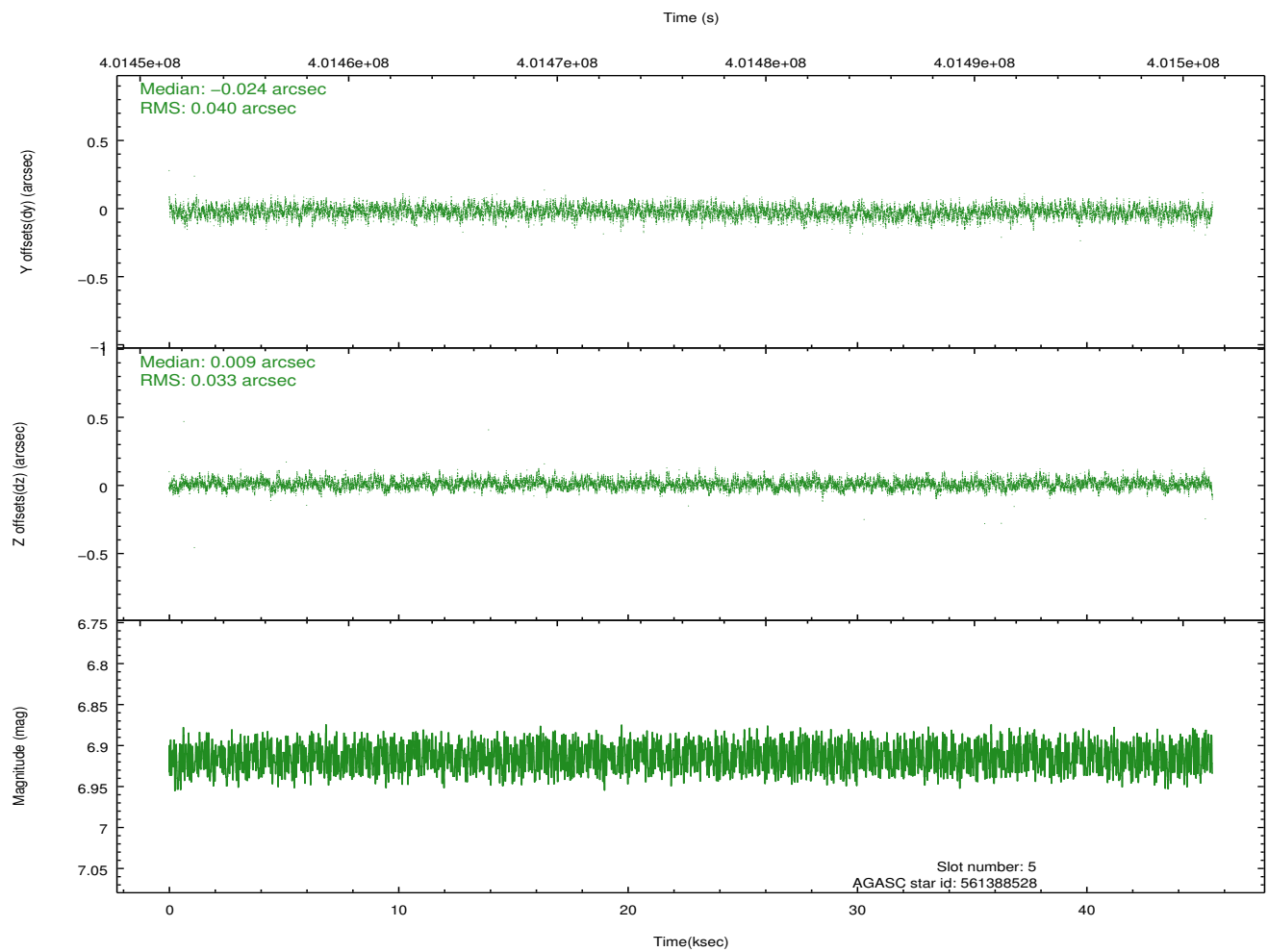
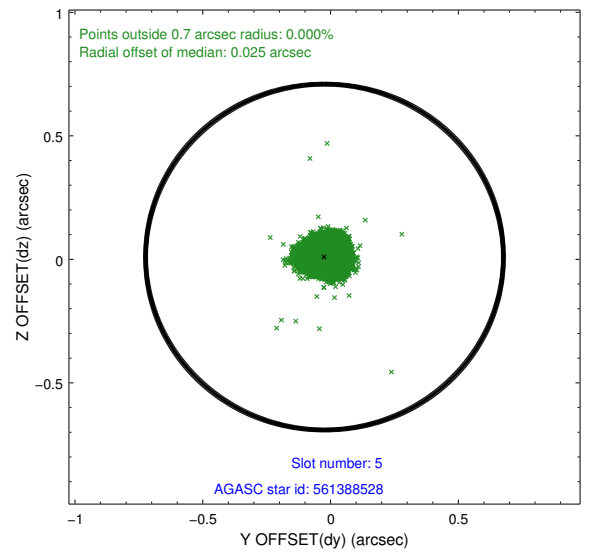
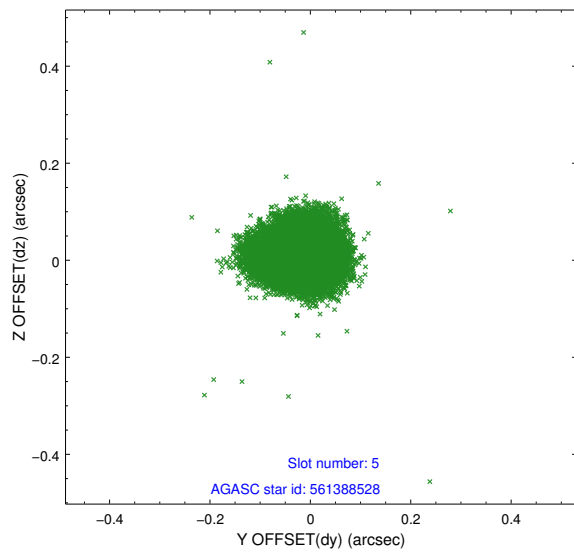
2.4.1 Slot 3



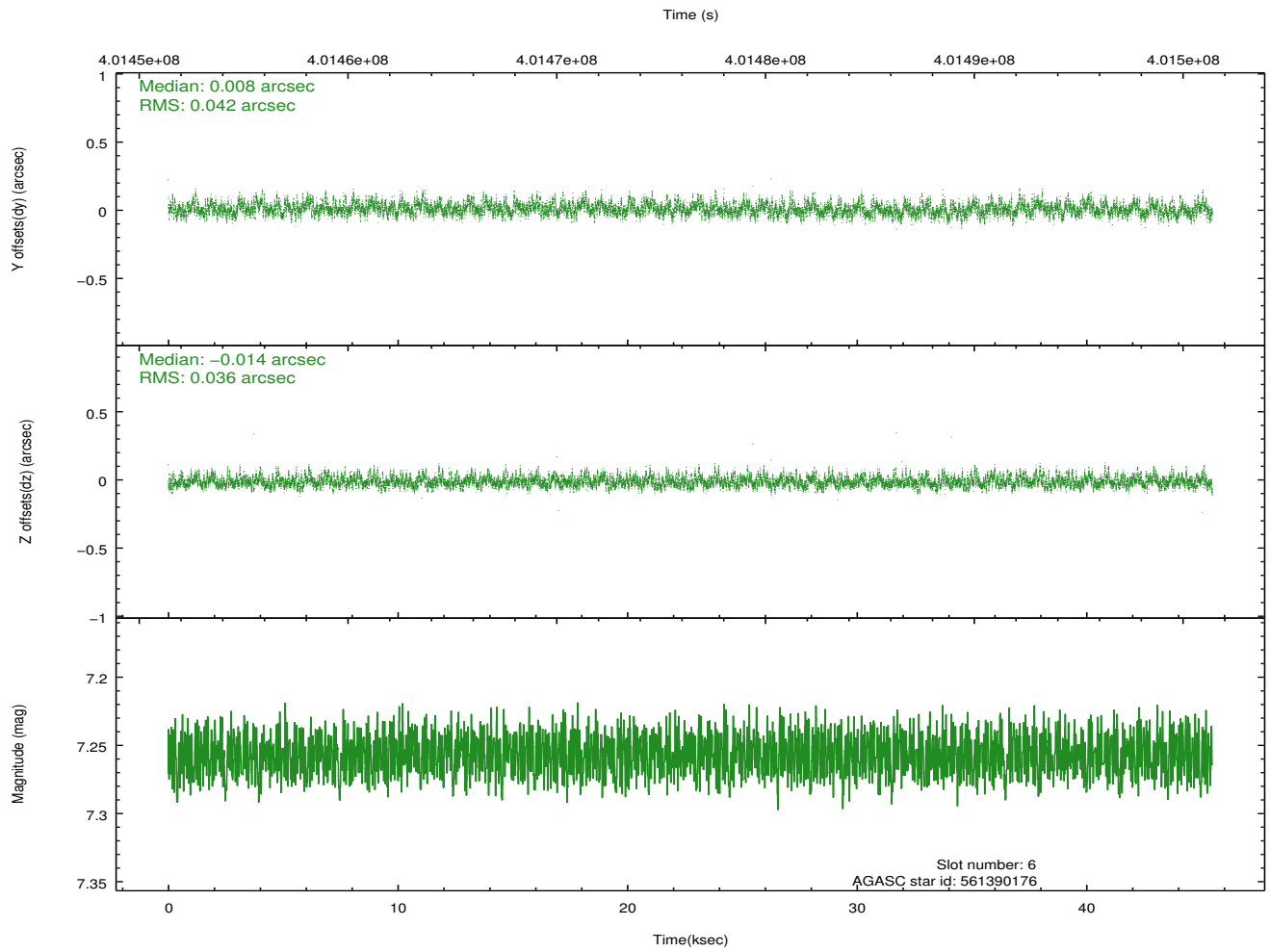
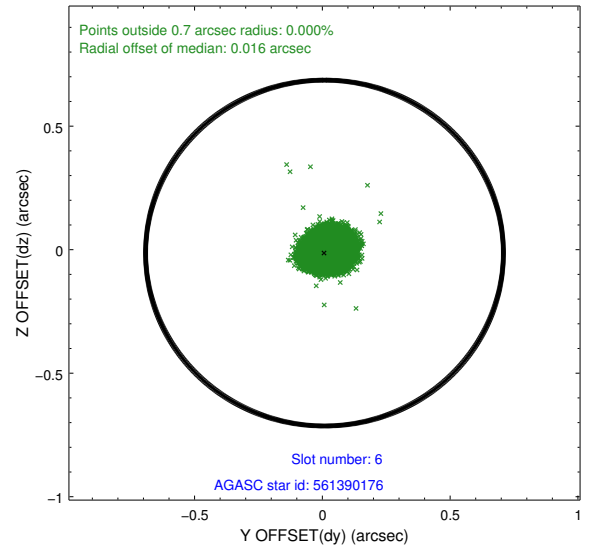
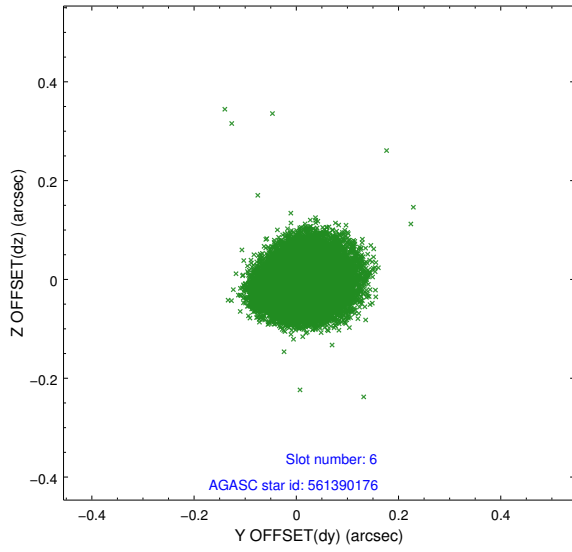
2.4.2 Slot 4



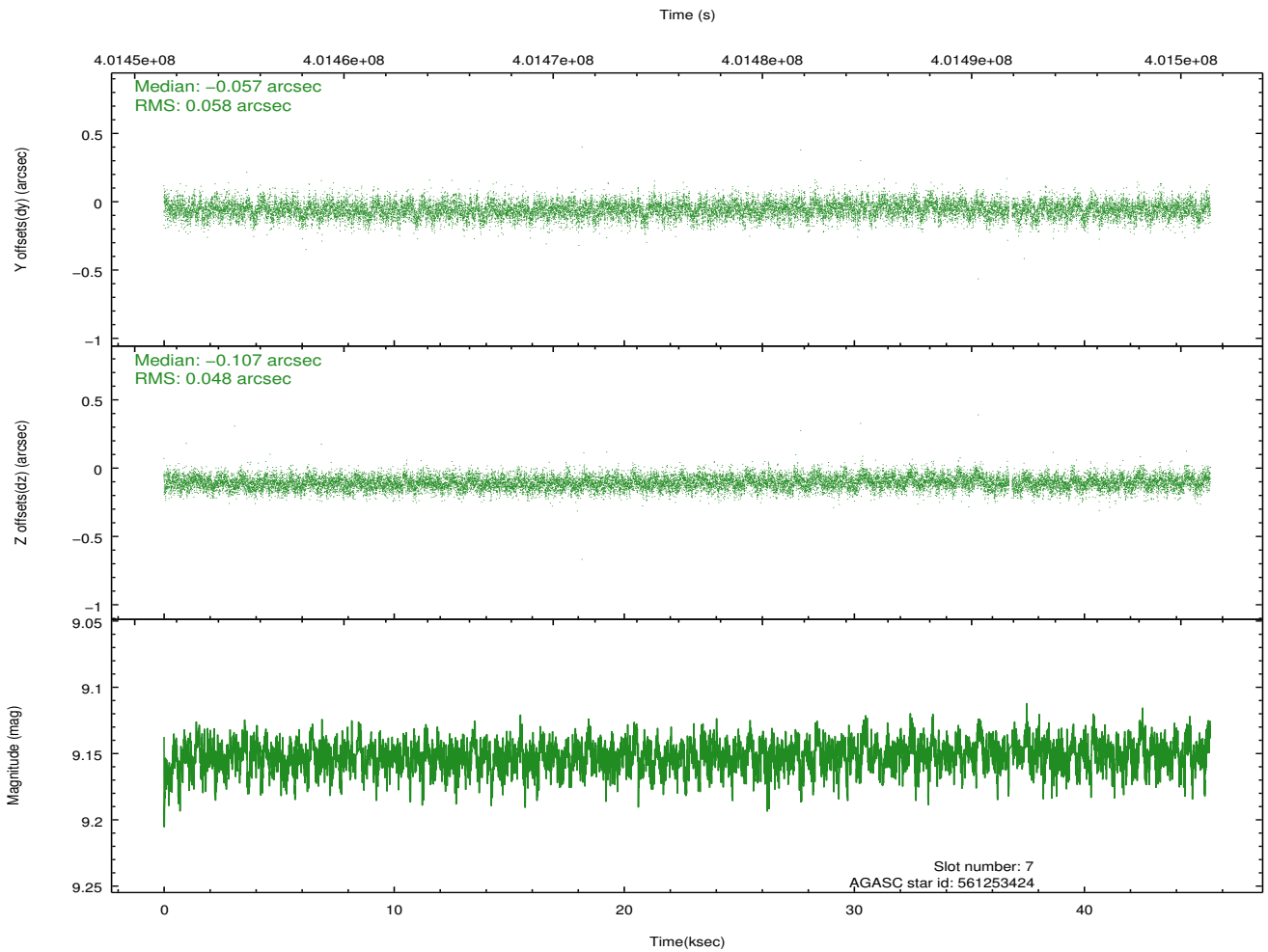
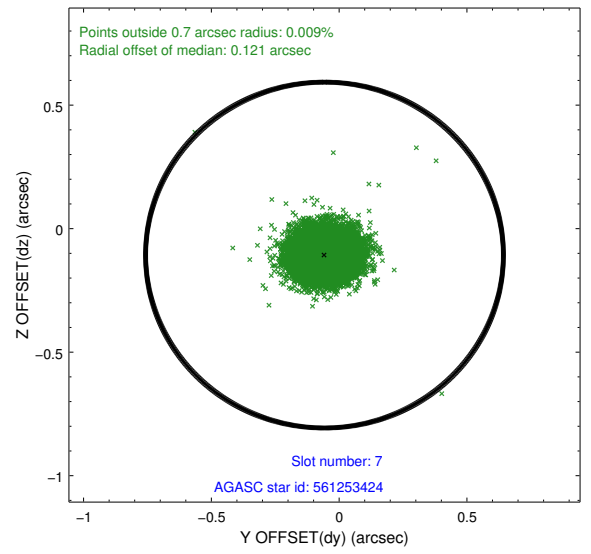
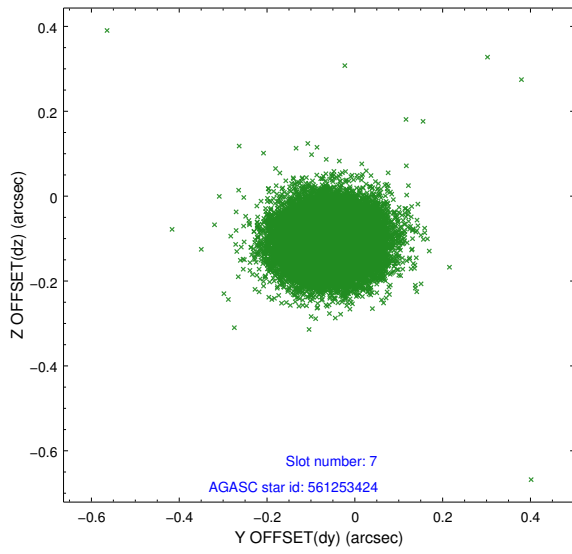
2.4.3 Slot 5



2.4.4 Slot 6

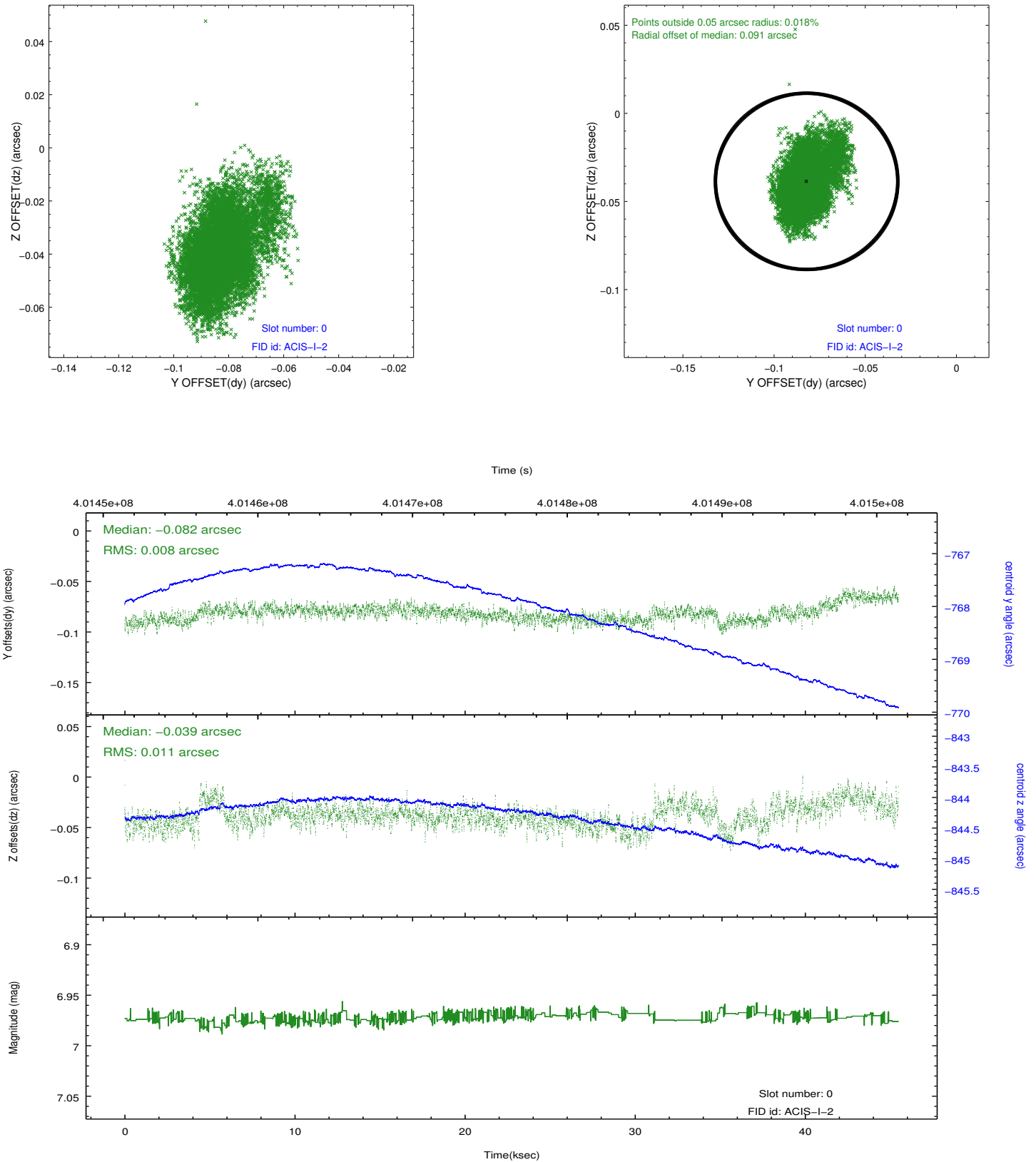


2.4.5 Slot 7

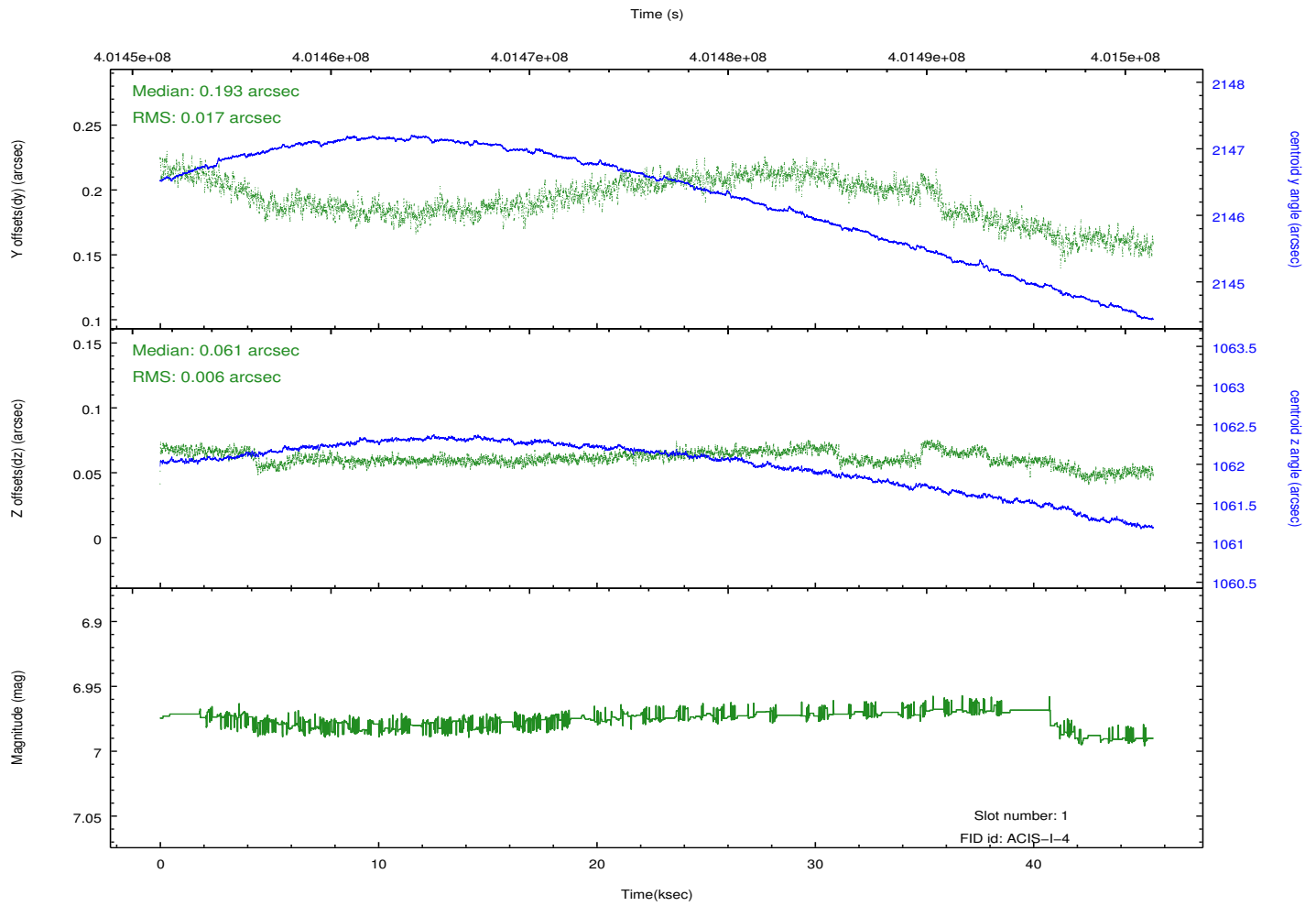
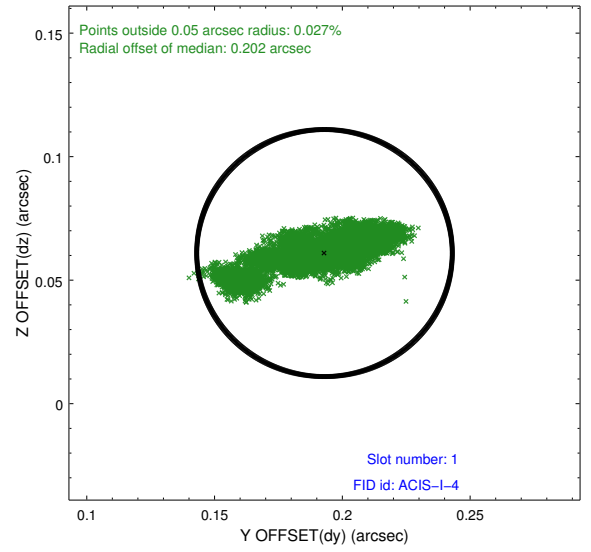
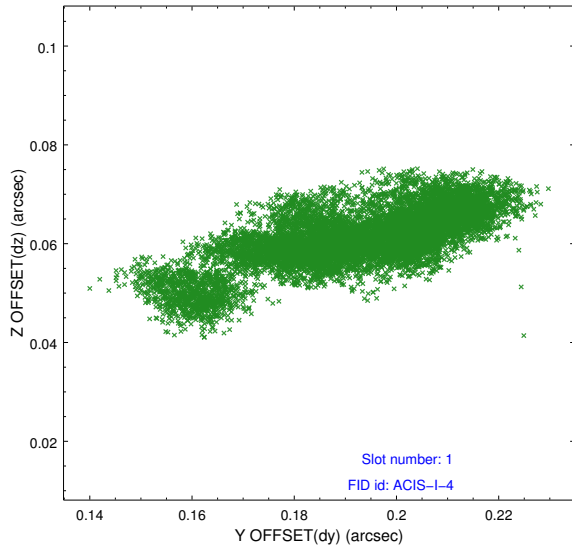


2.5 FID Slots

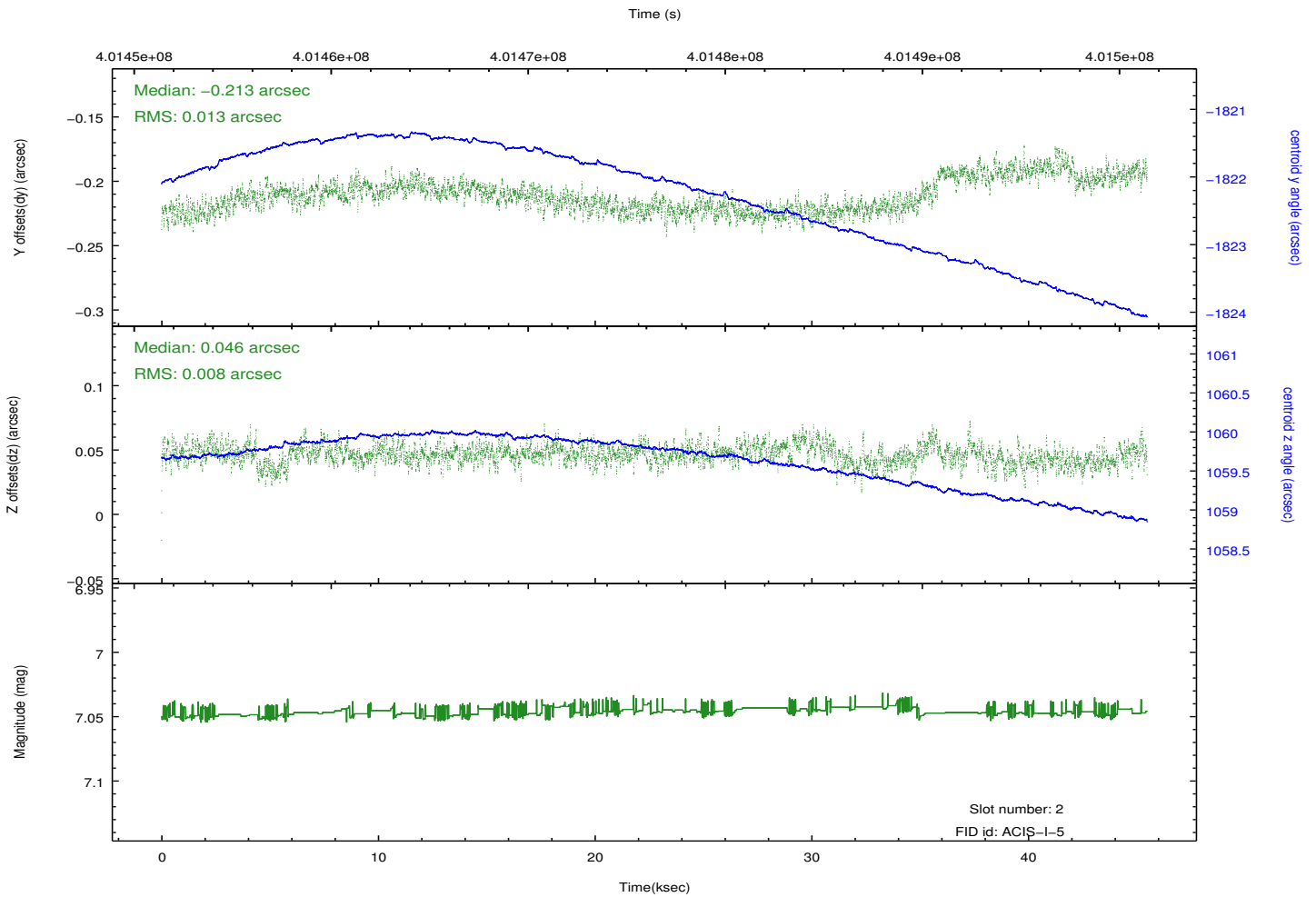
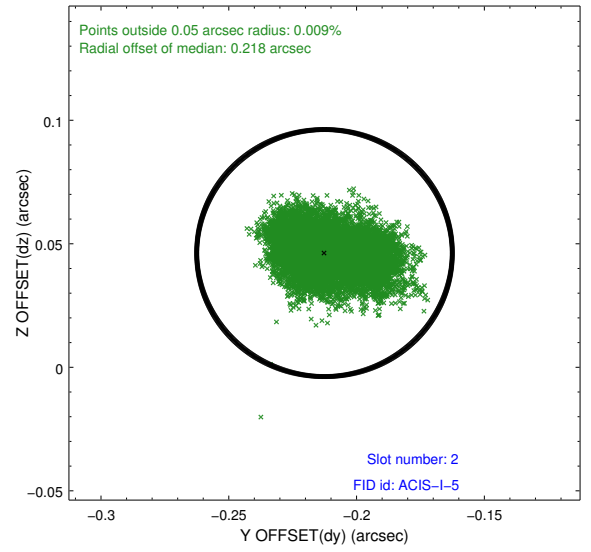
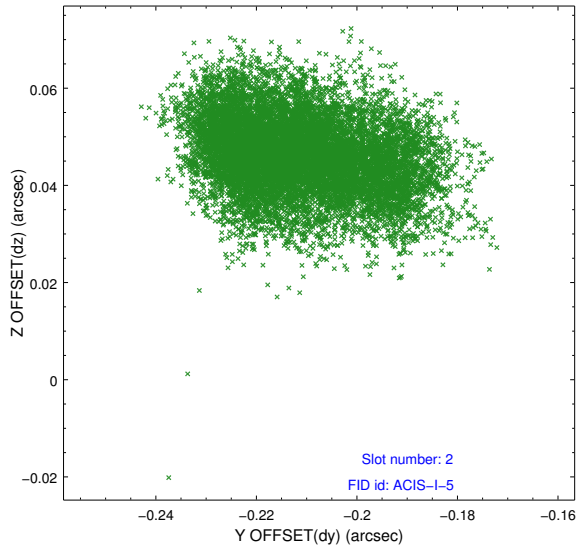
2.5.1 Slot 0



2.5.2 Slot 1



2.5.3 Slot 2



A Summary

A.1 Status

V&V Scientist	Jen Lauer
V&V Date (YYYY-MM-DD)	2012.07.12
V&V Edition	1
V&V Disposition and Status	OK
V&V Charge Time	44.553599834085

A.2 Comments

Joint proposal: Spitzer. Window preference met.

=====

A spatial region of the original bias map for CCD = 0 suffered from anomalously high data values. Pixels in the event data that were bias-corrected by one of the original affected bias pixels may have an apparent energy shift. While the change in energy is expected to be small (~20 eV), it depends on many parameters that have not yet been fully explored for this bias anomaly. The bias map for CCD = 0 has been reconstructed for this processing to remove this anomaly using scaled data from a comparable bias map from another observation. The pixels affected by the anomaly are bounded by sky coords:
(346.13149,62.50641), (346.13581,62.49820), (346.18284,62.50351), (346.17854,62.51173)