

# V&V Reference Report

## L2 ASCDS Version : 8.4.5

Observation 11024 - L2 Version 2  
Chandra X-Ray Center

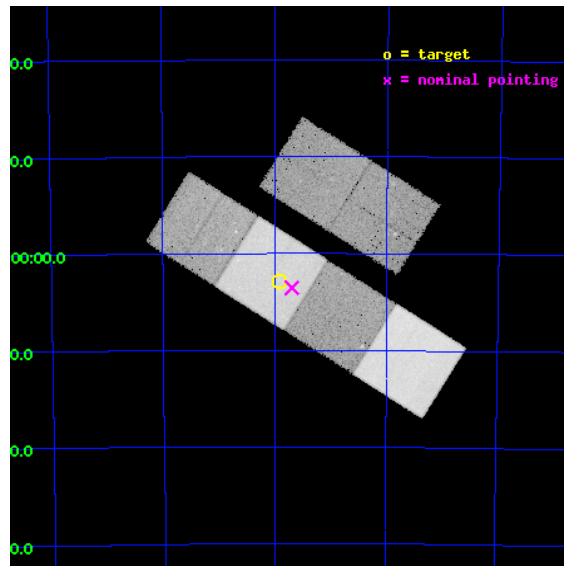
L2 Processing Date : Jun 17 2012

## Contents

<b>1</b>	<b>Front</b>	<b>2</b>
<b>2</b>	<b>OBI</b>	<b>3</b>
2.1	OBI . . . . .	3
2.1.1	Images . . . . .	3
2.1.2	Bias . . . . .	3
2.1.3	Parameters . . . . .	4
2.1.4	Events . . . . .	4
2.2	Compared Parameters . . . . .	5
2.3	Aspect . . . . .	6
2.4	Star Slots . . . . .	9
2.4.1	Slot 3 . . . . .	9
2.4.2	Slot 4 . . . . .	10
2.4.3	Slot 5 . . . . .	11
2.4.4	Slot 6 . . . . .	12
2.4.5	Slot 7 . . . . .	13
2.5	FID Slots . . . . .	14
2.5.1	Slot 0 . . . . .	14
2.5.2	Slot 1 . . . . .	15
2.5.3	Slot 2 . . . . .	16
<b>A</b>	<b>Summary</b>	<b>17</b>
A.1	Status . . . . .	17
A.2	Comments . . . . .	17

# 1 Front

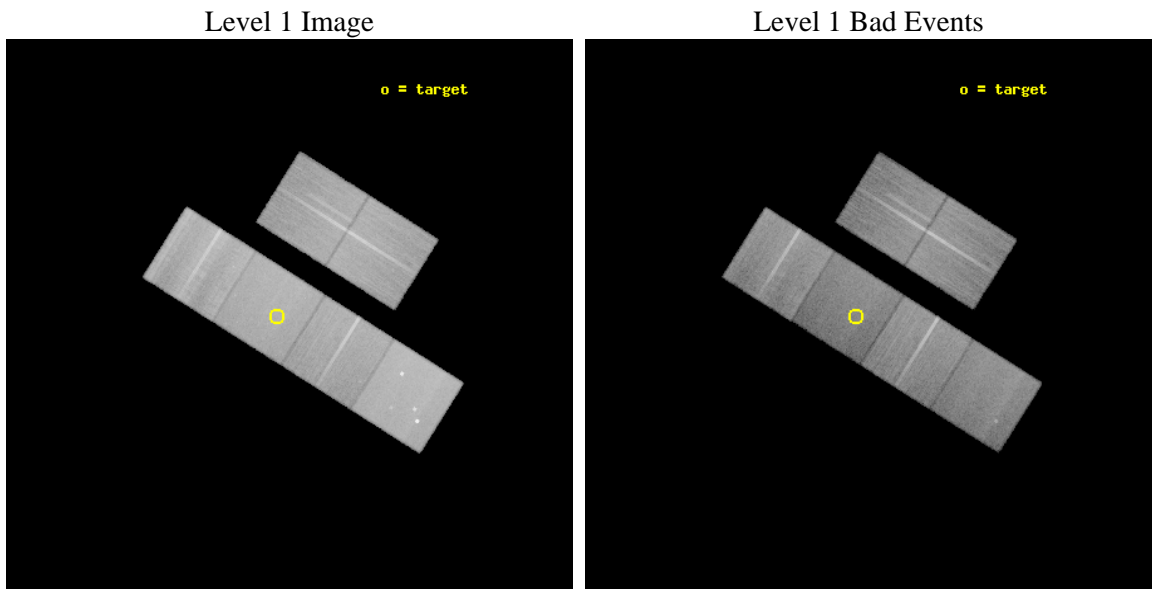
seq_num	300265	Sequence number
obs_id	11024	Observation id
title	Primordial formation of close binaries in globular clusters with low desity cores	Proposal title
observer	Prof. Albert Kong	Principal investigator
object	NGC6362	Source name
dtcycle	0	&#160
cycle	P	events from which exps? Prim/Second/Both
ra_targ	262.97875	Observer's specified target RA [deg]
dec_targ	-67.047861	Observer's specified target Dec [deg]
ra_nom	262.92408084291	Nominal RA [deg]
dec_nom	-67.059286132383	Nominal Dec [deg]
roll_nom	212.14070125269	Nominal Roll [deg]
revision	2	Processing version of data
ontime	31158.399883986	Sum of GTIs [s]
livetime	30763.853463319	Livetime [s]
ontime2	31158.399883986	Sum of GTIs [s]
ontime3	31158.399883986	Sum of GTIs [s]
ontime5	31158.399883986	Sum of GTIs [s]
ontime6	31155.159063041	Sum of GTIs [s]
ontime7	31158.399883986	Sum of GTIs [s]
ontime8	31148.677012861	Sum of GTIs [s]
l2events	426271	Number of level 2 events



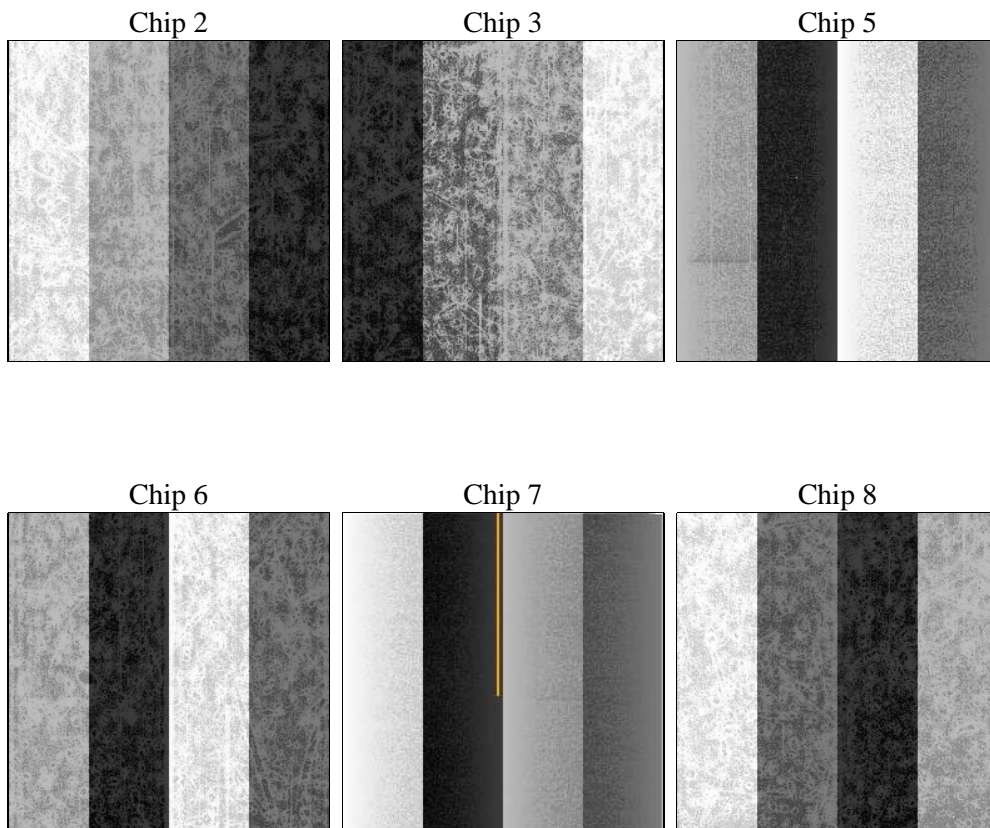
## 2 OBI

### 2.1 OBI

#### 2.1.1 Images



#### 2.1.2 Bias



### 2.1.3 Parameters

obi_num	2	Obi number	sched_exp_time	31000.000000	[s] Scheduled observation exposure time
ascdsver	8.4.5	Processing system revision	ontime	31158.399883986	Sum of GTIs [s]
caldbver	4.4.10	&#160	ontime2	31158.399883986	Sum of GTIs [s]
date	2012-06-17T06:04:55	Date and time of file creation	ontime3	31158.399883986	Sum of GTIs [s]
revision	2	Processing version of data	ontime5	31158.399883986	Sum of GTIs [s]
			ontime6	31155.159063041	Sum of GTIs [s]
			ontime7	31158.399883986	Sum of GTIs [s]
			ontime8	31148.677012861	Sum of GTIs [s]
			l1events	1873723	Number of level 1 events

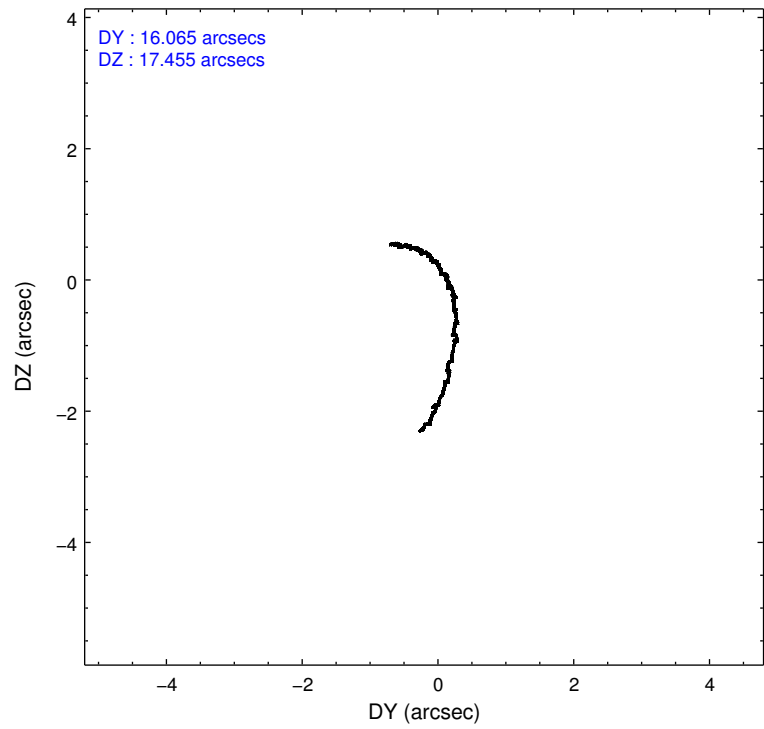
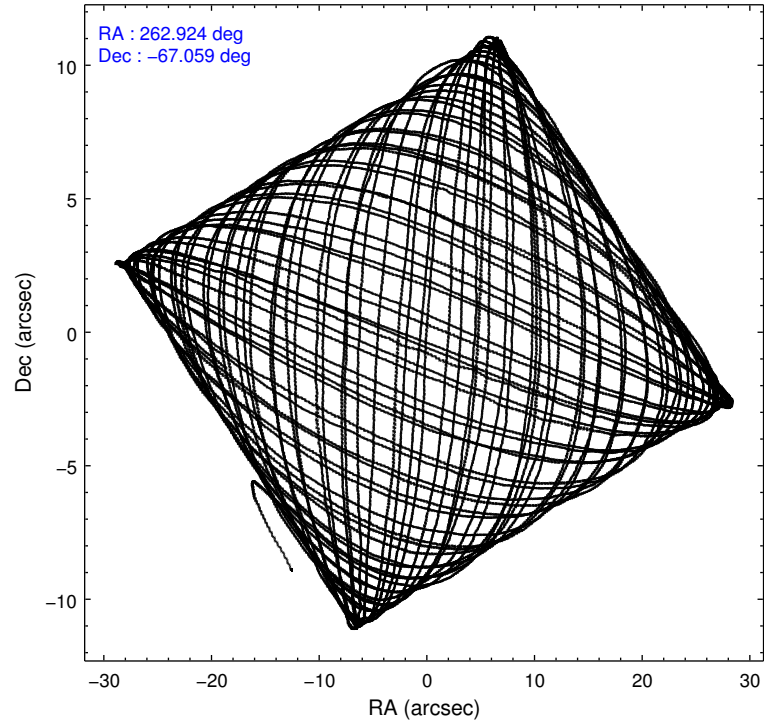
### 2.1.4 Events

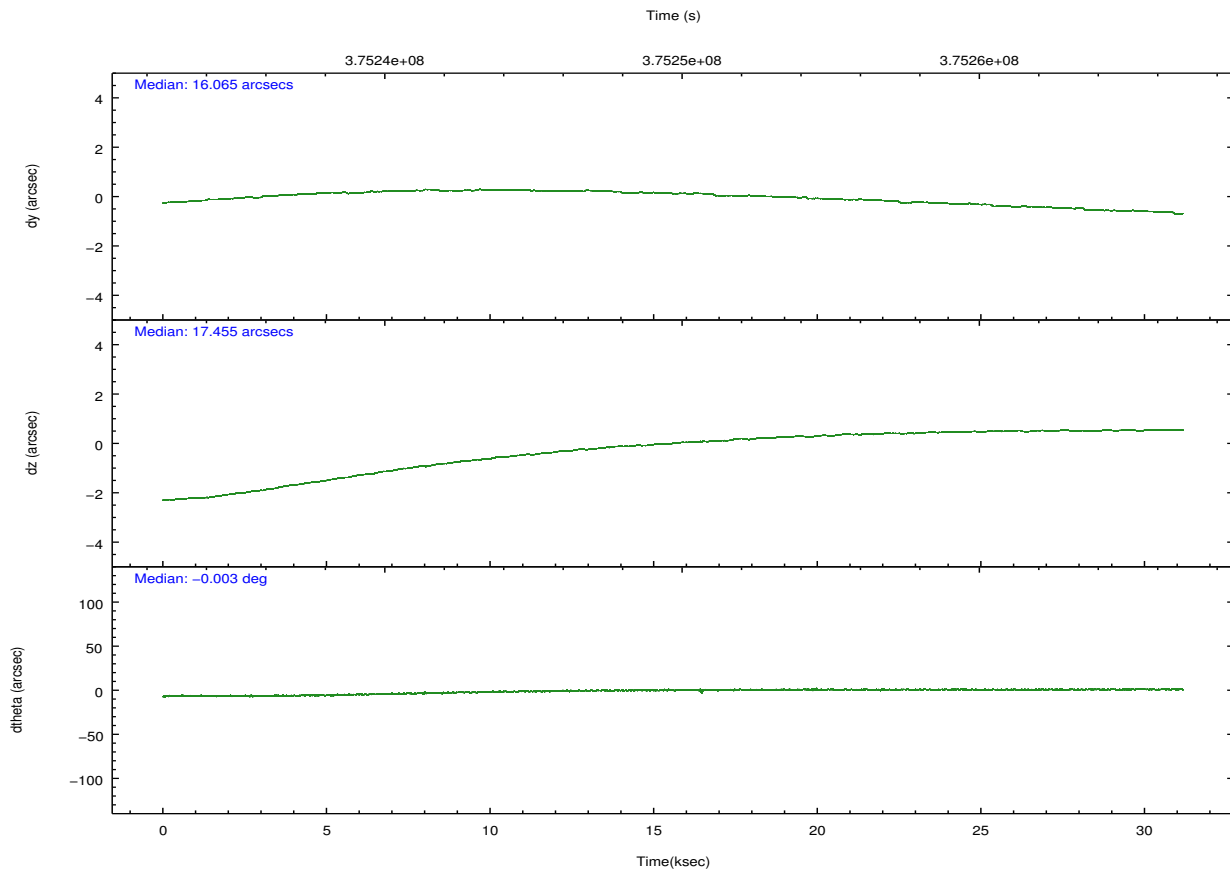
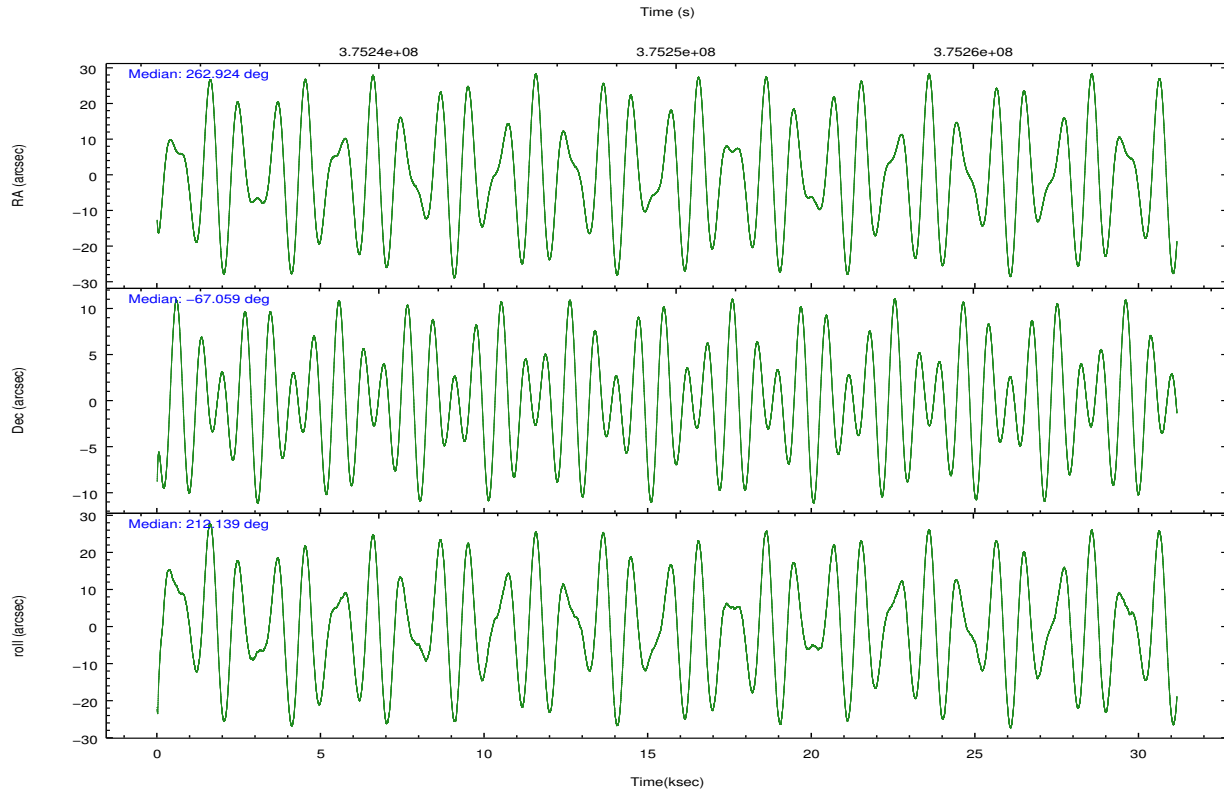
	ccd 2	ccd 3	ccd 5	ccd 6	ccd 7	ccd 8		ccd 2	ccd 3	ccd 5	ccd 6	ccd 7	ccd 8
level 1 events	281029	258615	393564	276315	314897	349303	grade 0 events	10677	9635	23341	11259	14551	28361
rejected events	252888	232542	196777	246624	170298	258288		3%	3%	5%	4%	4%	8%
rejected %	89%	89%	49%	89%	54%	73%	grade 1 events	197	149	1184	140	425	301
								0%	0%	0%	0%	0%	0%
							grade 2 events	6660	5784	59095	6383	29963	20961
								2%	2%	15%	2%	9%	6%
							grade 3 events	2873	2860	7547	3093	13005	9586
								1%	1%	1%	1%	4%	2%
							grade 4 events	2900	2821	7268	2957	13066	8858
								1%	1%	1%	1%	4%	2%
							grade 5 events	9604	11094	29522	11268	32661	16327
								3%	4%	7%	4%	10%	4%
							grade 6 events	5183	5161	100992	6189	75068	23887
								1%	1%	25%	2%	23%	6%
							grade 7 events	242935	221111	164615	235026	136158	241022
								86%	85%	41%	85%	43%	69%

## 2.2 Compared Parameters

Parameter	Planned	Actual	Parameter	Planned	Actual
Instrument	ACIS	ACIS	Obspar format version number	7	7
Detector	ACIS-235678	ACIS-235678	Obspar file type	PREDICTED	ACTUAL
Grating	NONE	NONE	Obspar update status	NONE	UPDATED
Data mode	VFAINT	VFAINT	CCD I0 on	N	N
Observation mode	POINTING	POINTING	CCD I1 on	N	N
[deg] Pointing RA	262.955989	262.9240808429053	CCD I2 on	O1	Y
[deg] Pointing Dec	-67.034935	-67.05928613238288	CCD I3 on	O2	Y
[deg] Pointing Roll	212.013463	212.1407012526857	CCD S0 on	N	N
[mm] SIM focus pos	-0.684267	-0.6828225247311905	CCD S1 on	Y	Y
[mm] SIM defocus	0	0.001444936568705701	CCD S2 on	Y	Y
[mm] SIM translation stage pos	-190.132523	-190.1400660498719	CCD S3 on	Y	Y
[mm] SIM translation stage offset	0	0.00754346686406393	CCD S4 on	Y	Y
[s] Observation start time (MET)	375234287.184000	375233116.54961	CCD S5 on	N	N
Observation start date	2009-11-21T23:43:41	2009-11-21T23:25:16	Number of optional ACIS chips dropped	0	0
[s] Observation end time (MET)	375265287.184000	375266578.7013	On-chip summing requested	N	N
Observation end date	2009-11-22T08:20:21	2009-11-22T08:42:58	Subarray requested	NONE	NONE
Read mode	TIMED	TIMED	Alternating exposures requested	N	N
			[s] Primary exposure time	0.000000	3.2

## 2.3 Aspect



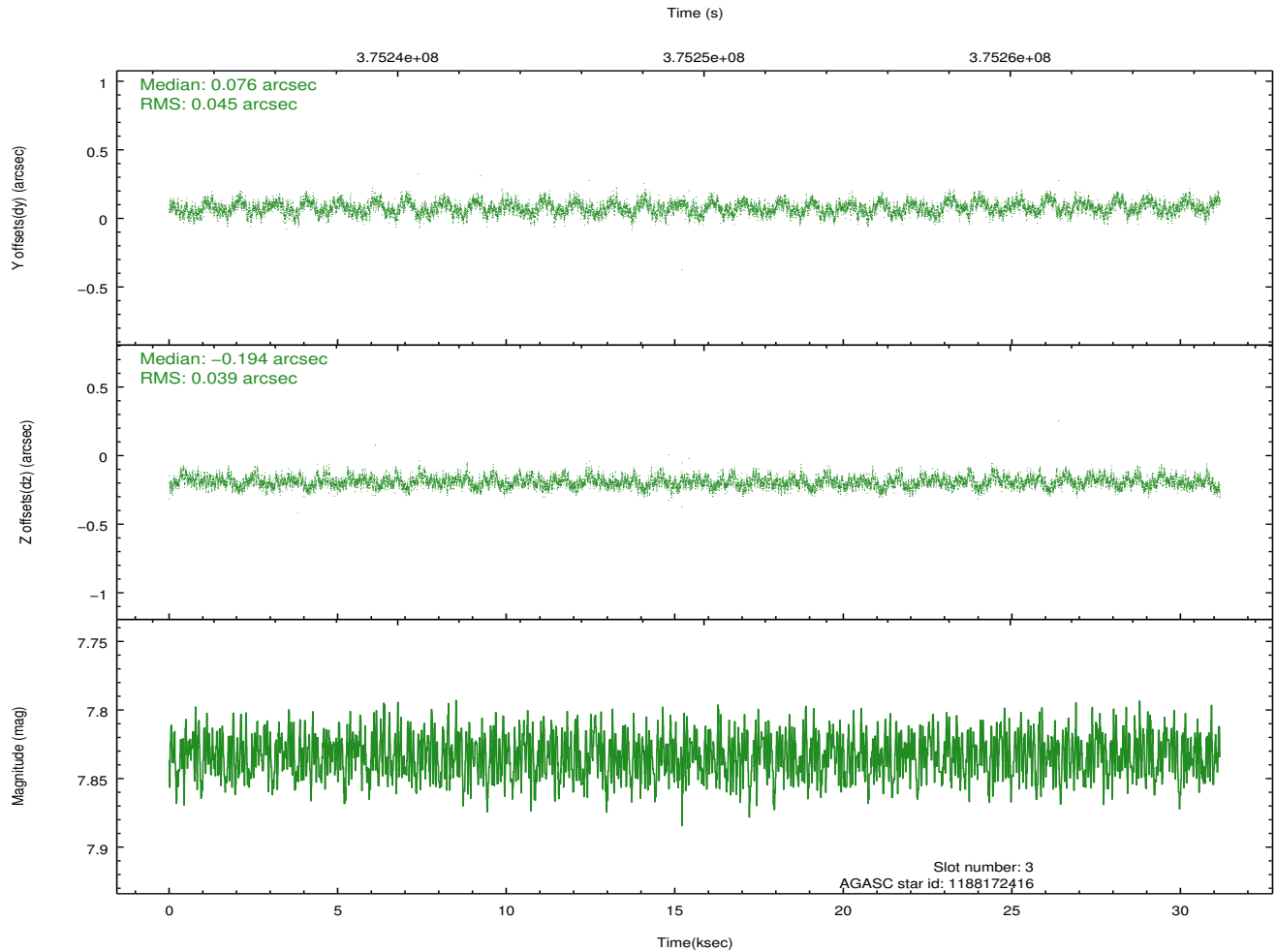
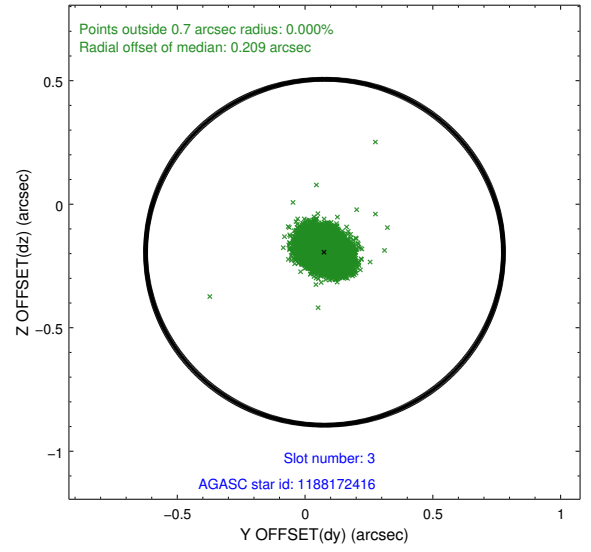
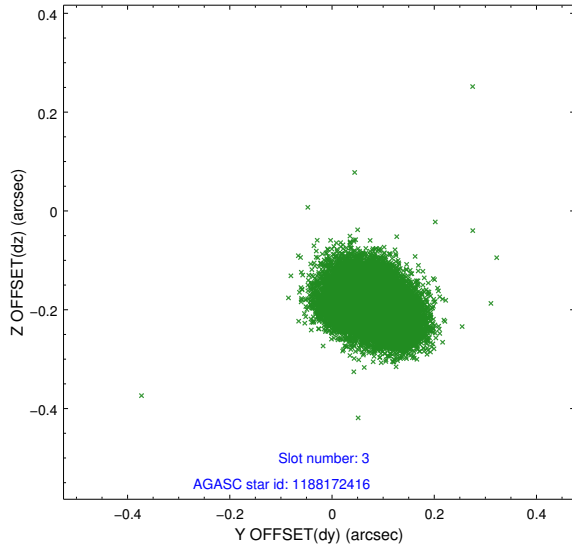


### Slot Statistics

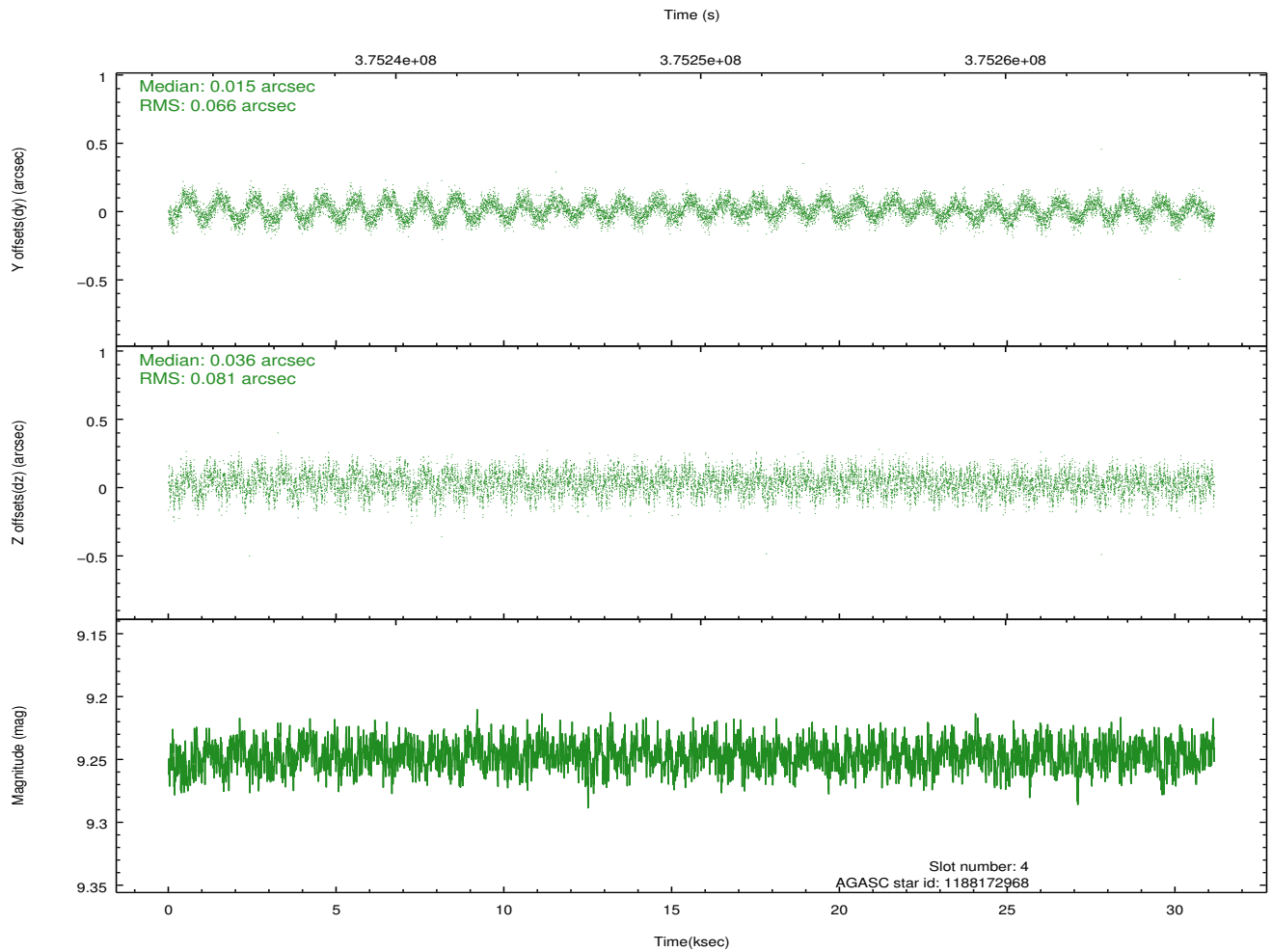
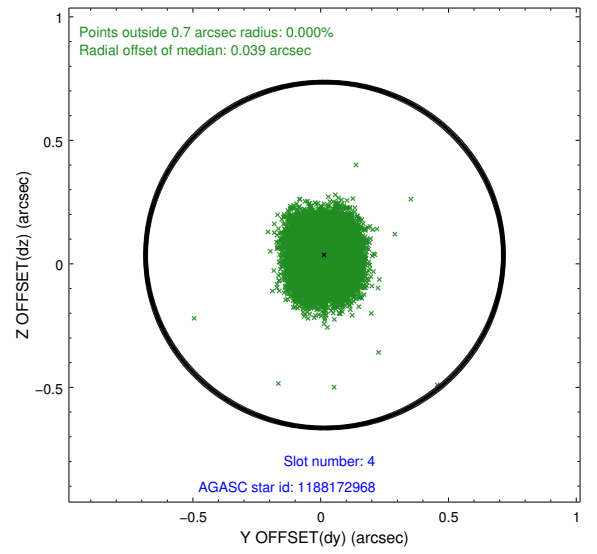
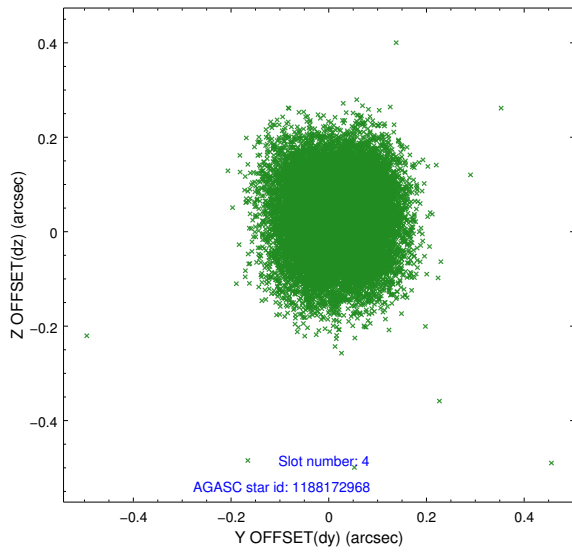
slot	status	id	mag	n_pts	med_dy	med_dz	dr1	dr2	ra	dec	mean_y	mean_z
0	FID	ACIS-S-2	6.89	7602	-0.076	-0.041	0.024	0.036	0.000000	0.000000	-769.11	-1738.58
1	FID	ACIS-S-4	6.97	7602	0.171	0.048	0.014	0.028	0.000000	0.000000	2144.42	169.87
2	FID	ACIS-S-5	7.01	7602	-0.126	0.004	0.027	0.037	0.000000	0.000000	-1821.89	163.63
3	GUIDE	1188172416	7.83	15197	0.076	-0.194	0.064	0.102	262.346035	-67.280471	1190.46	303.55
4	GUIDE	1188172968	9.25	15186	0.015	0.036	0.113	0.176	262.843582	-66.395007	-1083.01	-2038.85
5	GUIDE	1188174744	7.57	15200	-0.061	0.120	0.065	0.106	263.414725	-66.580483	-1422.19	-1037.03
6	GUIDE	1188178032	8.47	15193	-0.074	-0.125	0.089	0.140	263.504678	-67.068488	-586.11	513.43
7	GUIDE	1188181008	9.22	15171	0.045	0.167	0.105	0.173	261.494359	-67.251550	2151.69	-396.53

## 2.4 Star Slots

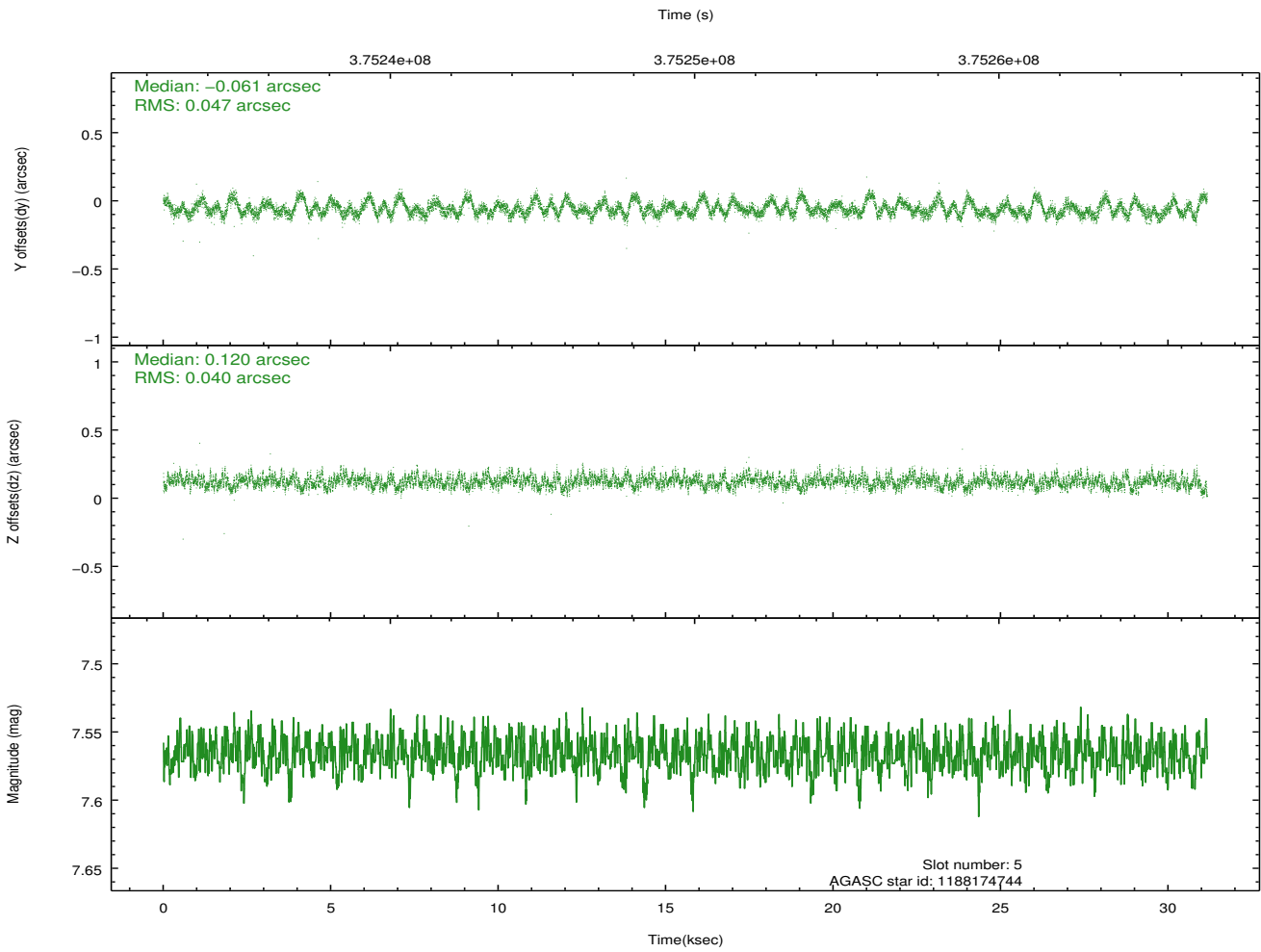
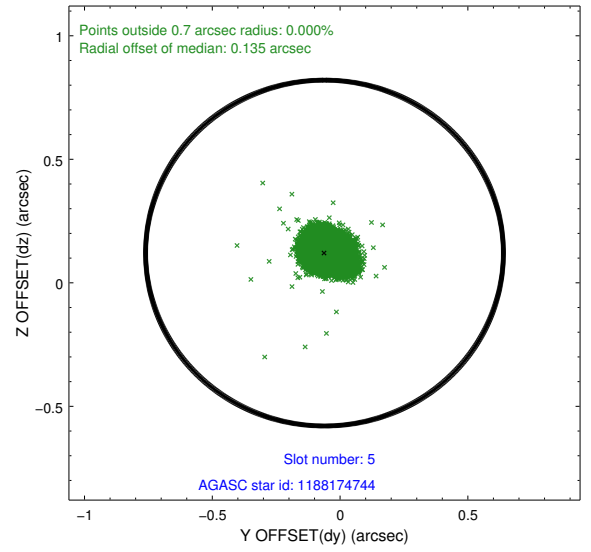
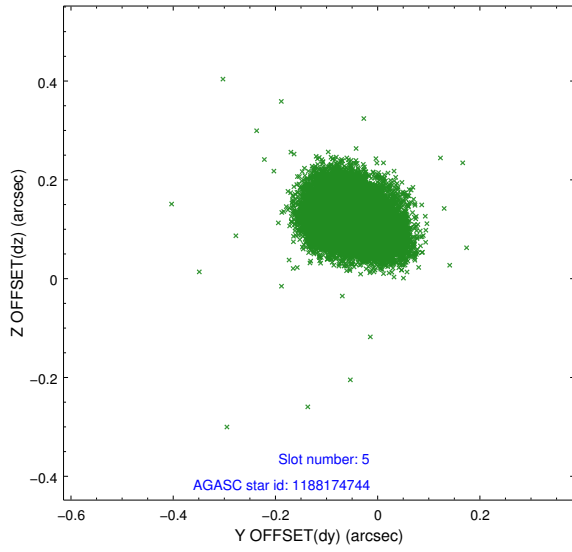
### 2.4.1 Slot 3



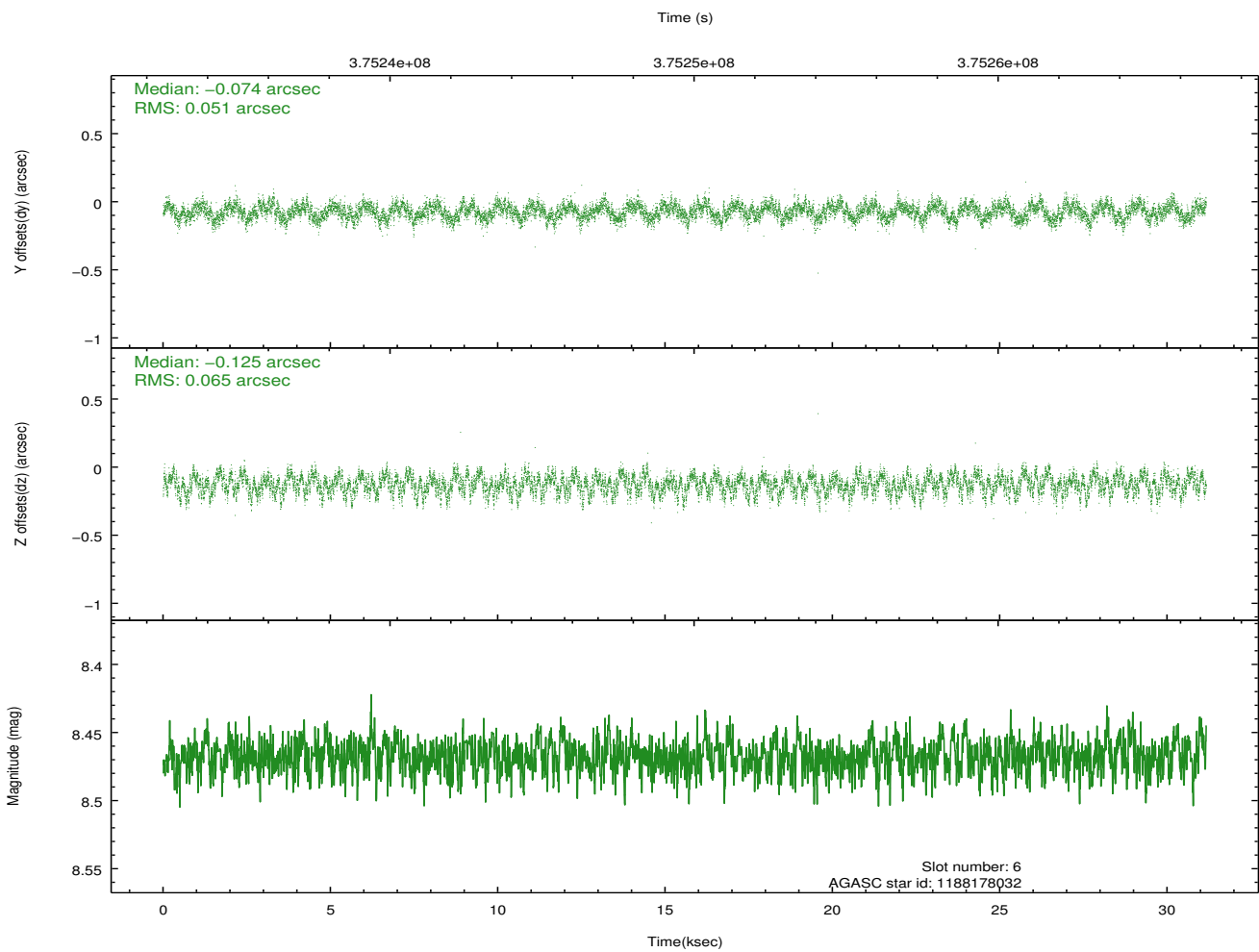
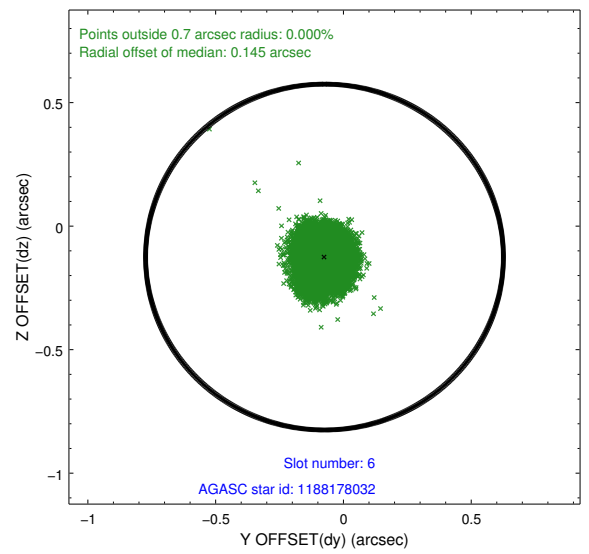
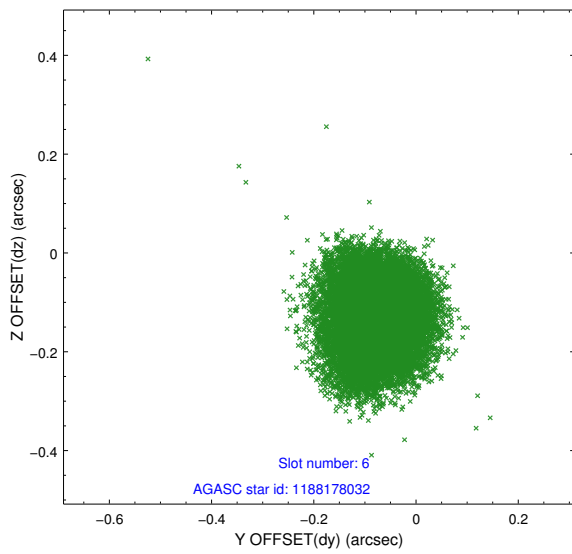
### 2.4.2 Slot 4



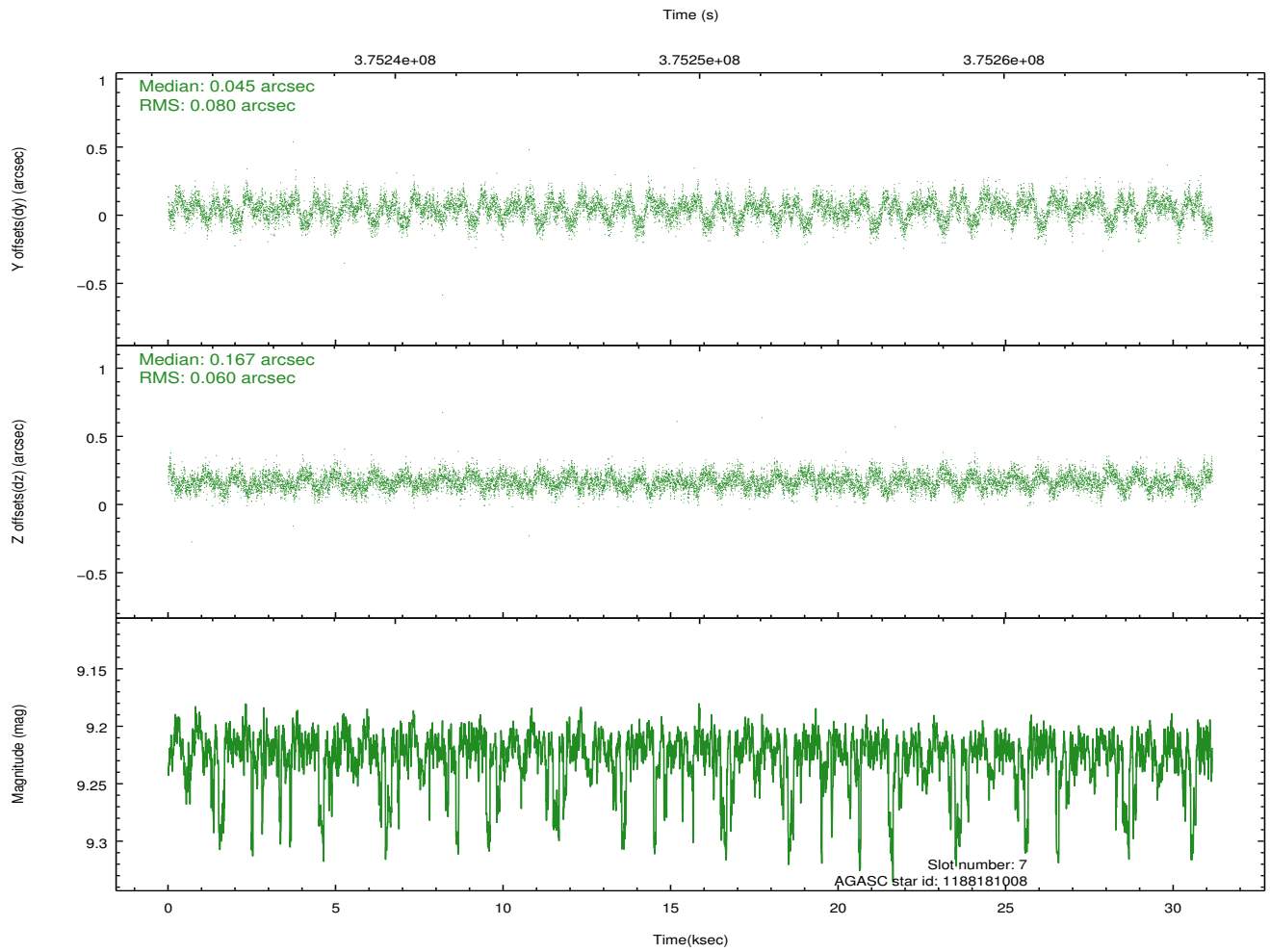
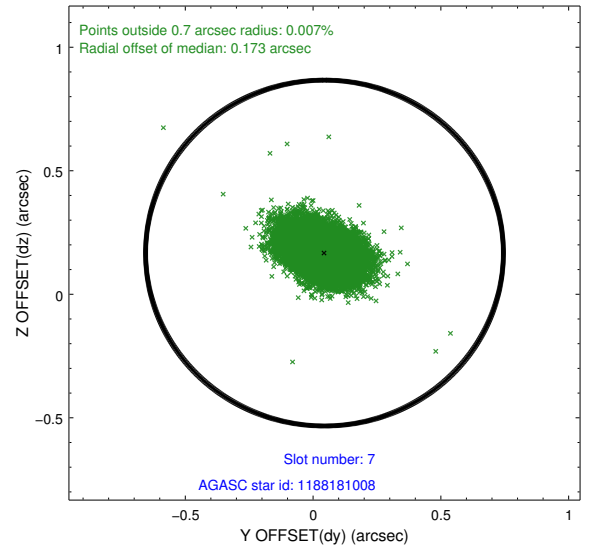
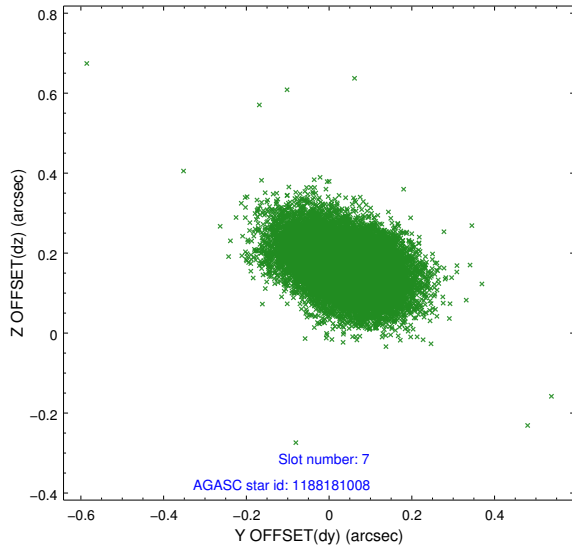
### 2.4.3 Slot 5



## 2.4.4 Slot 6

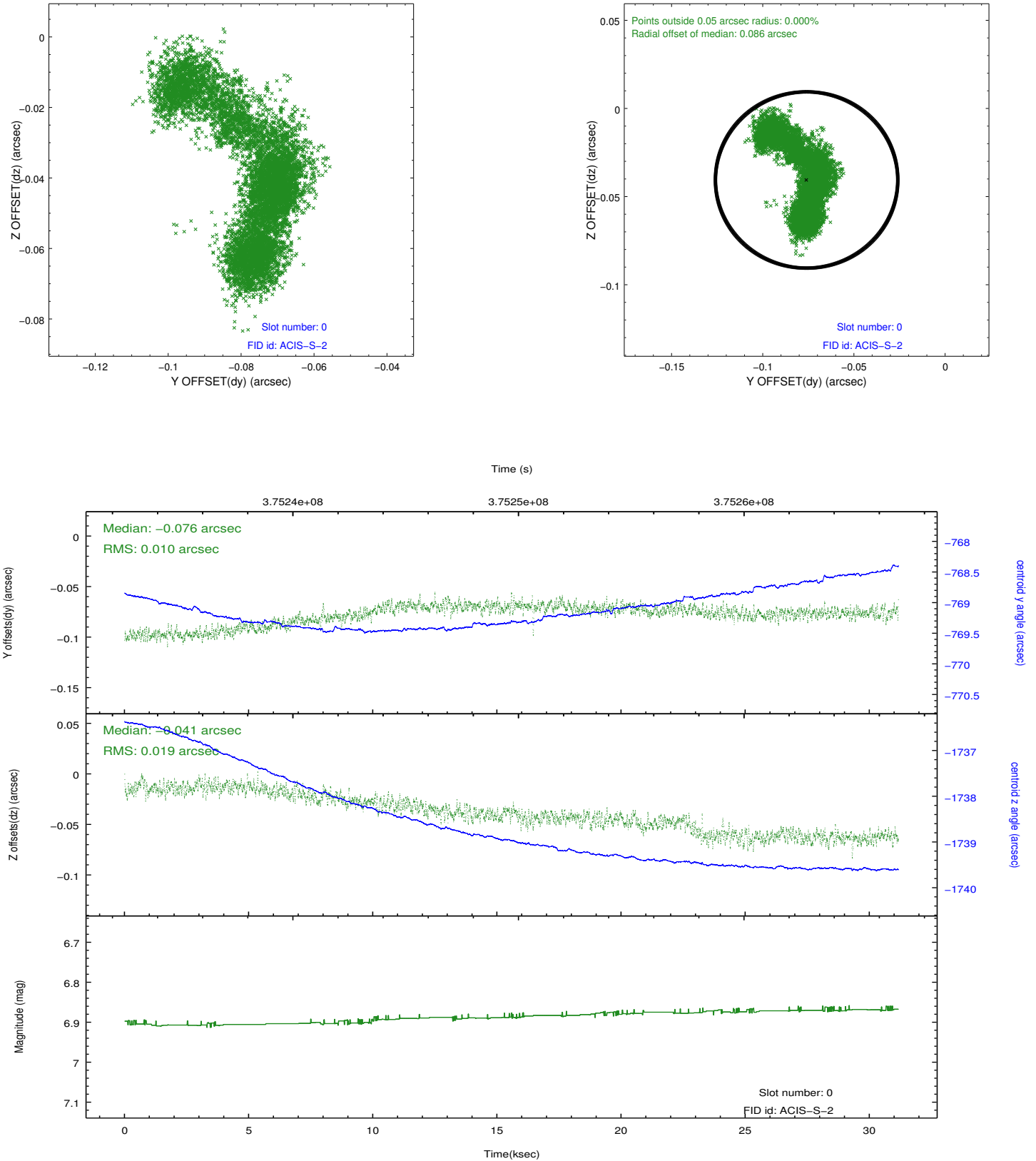


### 2.4.5 Slot 7

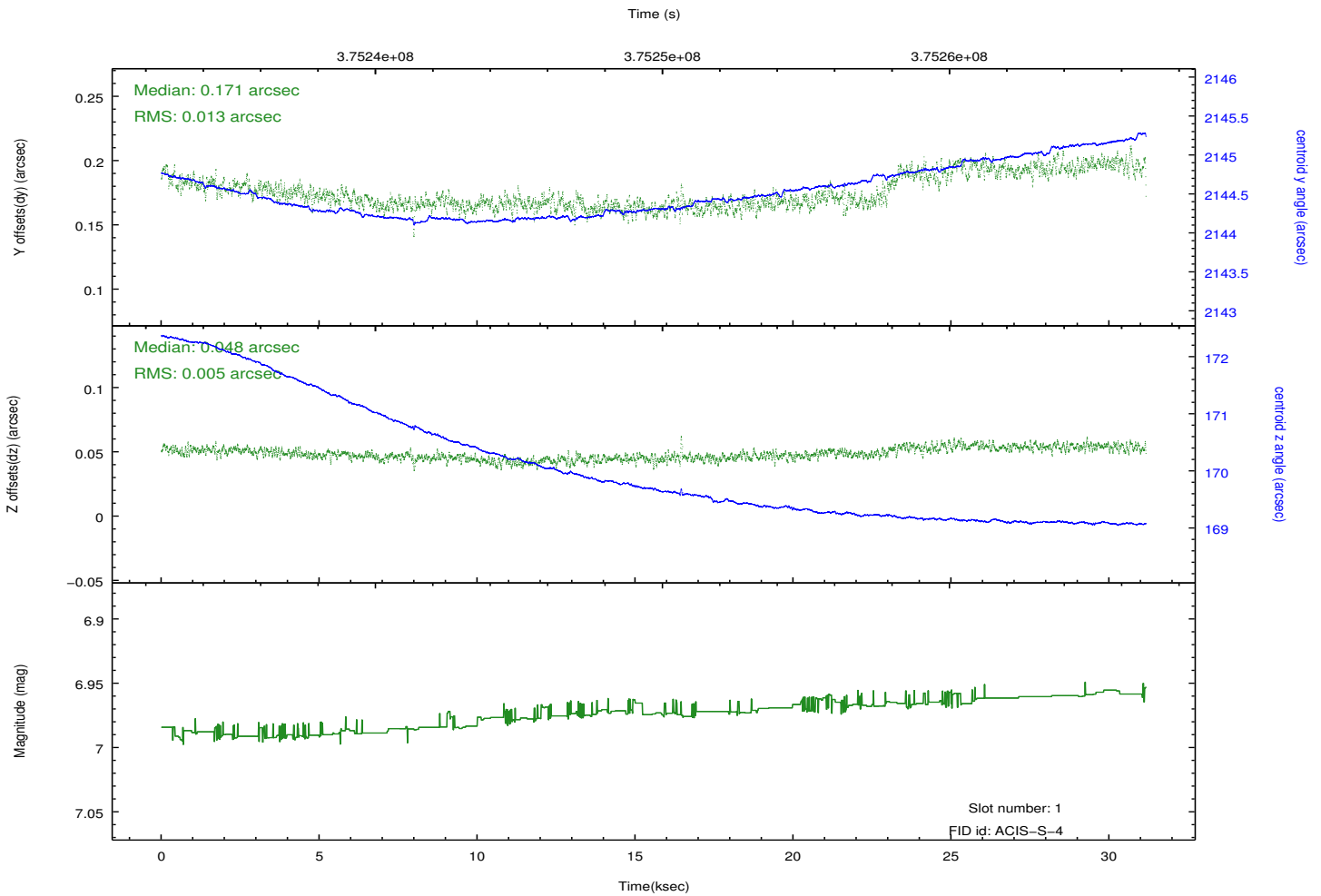
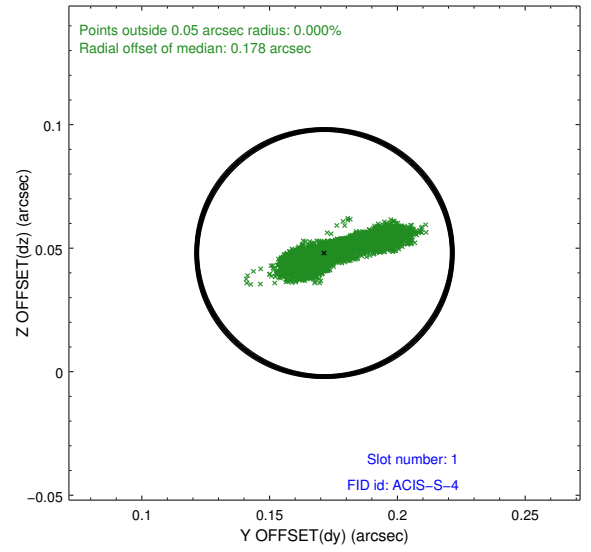
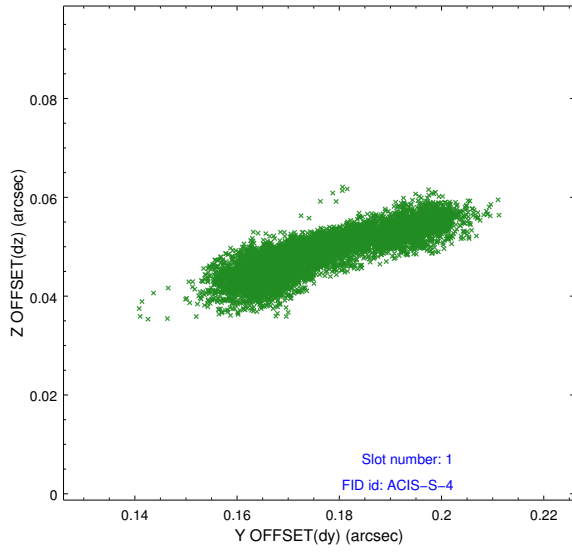


## 2.5 FID Slots

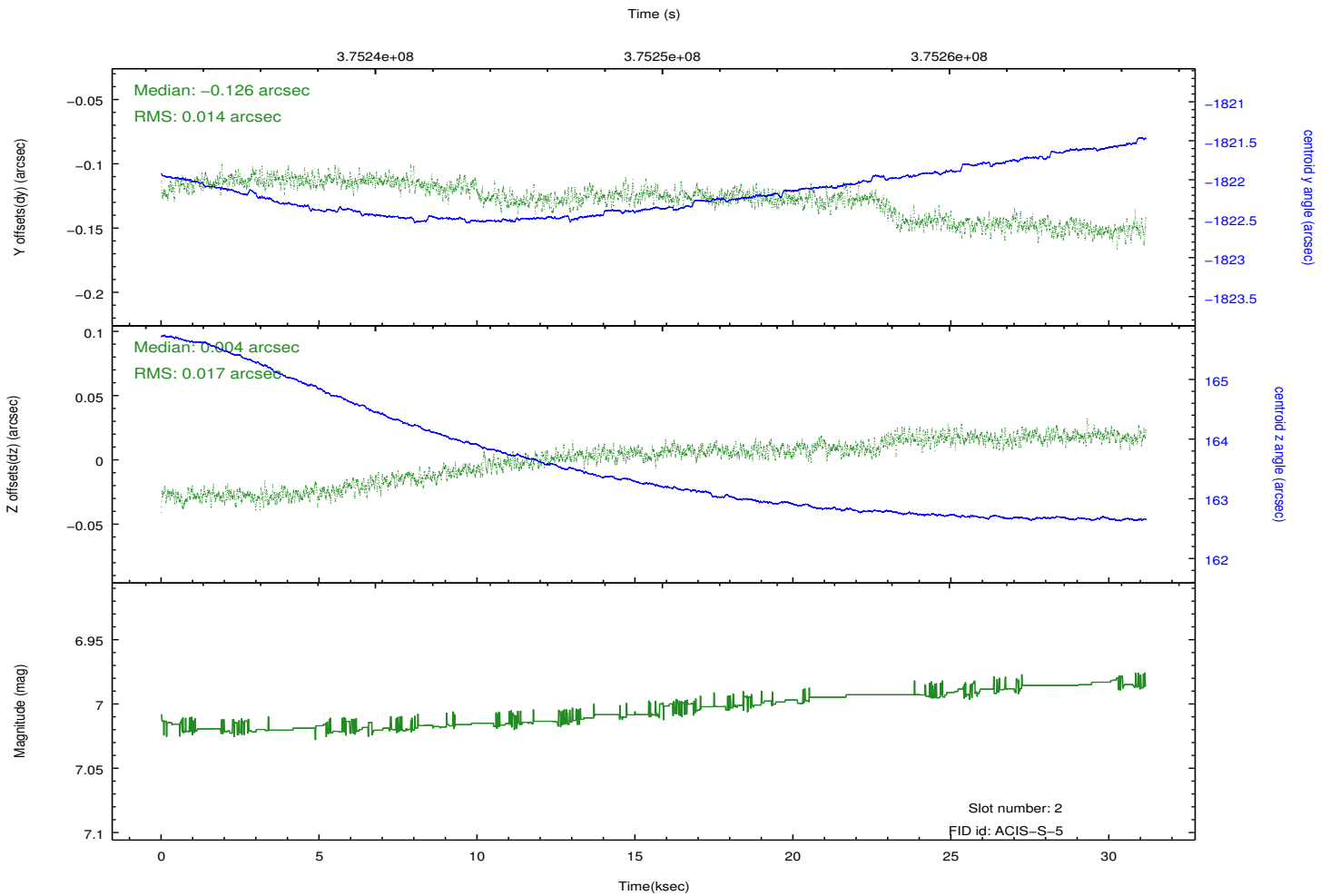
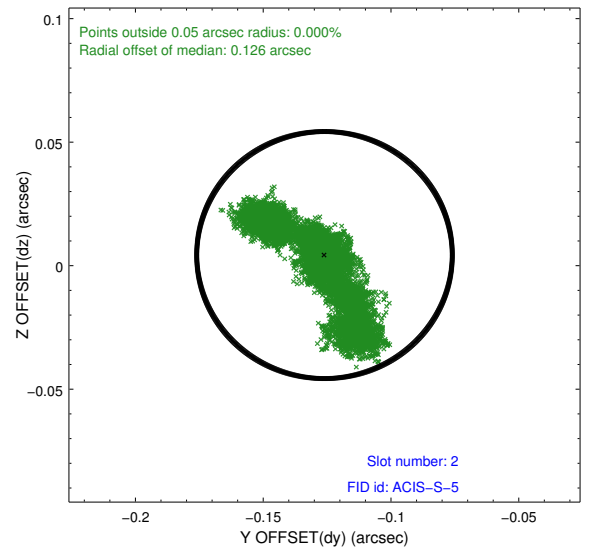
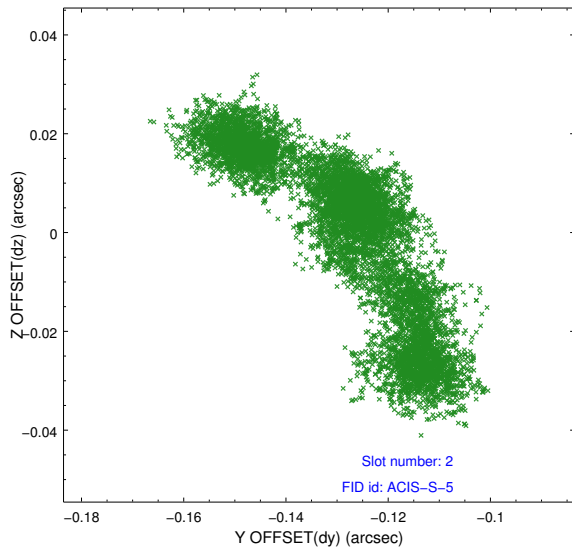
### 2.5.1 Slot 0



## 2.5.2 Slot 1



### 2.5.3 Slot 2



# A Summary

## A.1 Status

V&V Scientist	Jen Lauer
V&V Date (YYYY-MM-DD)	2012.06.21
V&V Edition	1
V&V Disposition and Status	OK
V&V Charge Time	31.158399883986

## A.2 Comments

Joint proposal with HST.