

# V&V Reference Report

## L2 ASCDS Version : 8.4.5

Observation 11234 - L2 Version 2  
Chandra X-Ray Center

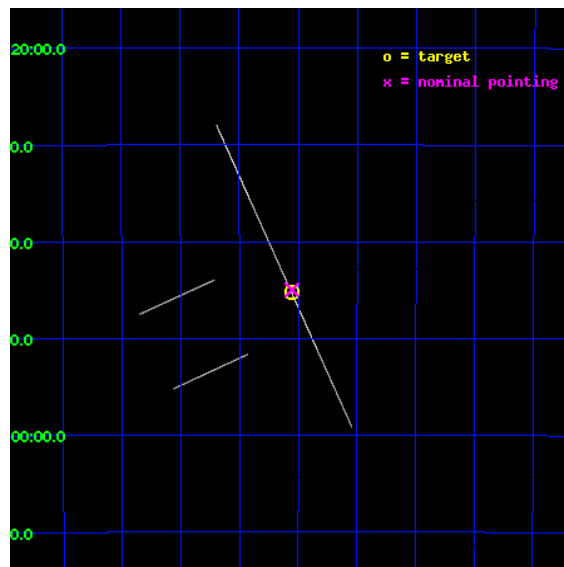
L2 Processing Date : Jun 26 2012

## Contents

<b>1</b>	<b>Front</b>	<b>2</b>
<b>2</b>	<b>OBI</b>	<b>3</b>
2.1	OBI . . . . .	3
2.1.1	Images . . . . .	3
2.1.2	Bias . . . . .	3
2.1.3	Parameters . . . . .	4
2.1.4	Events . . . . .	4
2.2	Compared Parameters . . . . .	5
2.3	Aspect . . . . .	6
2.4	Star Slots . . . . .	9
2.4.1	Slot 3 . . . . .	9
2.4.2	Slot 4 . . . . .	10
2.4.3	Slot 5 . . . . .	11
2.4.4	Slot 6 . . . . .	12
2.4.5	Slot 7 . . . . .	13
2.5	FID Slots . . . . .	14
2.5.1	Slot 0 . . . . .	14
2.5.2	Slot 1 . . . . .	15
2.5.3	Slot 2 . . . . .	16
<b>A</b>	<b>Summary</b>	<b>17</b>
A.1	Status . . . . .	17
A.2	Comments . . . . .	17

# 1 Front

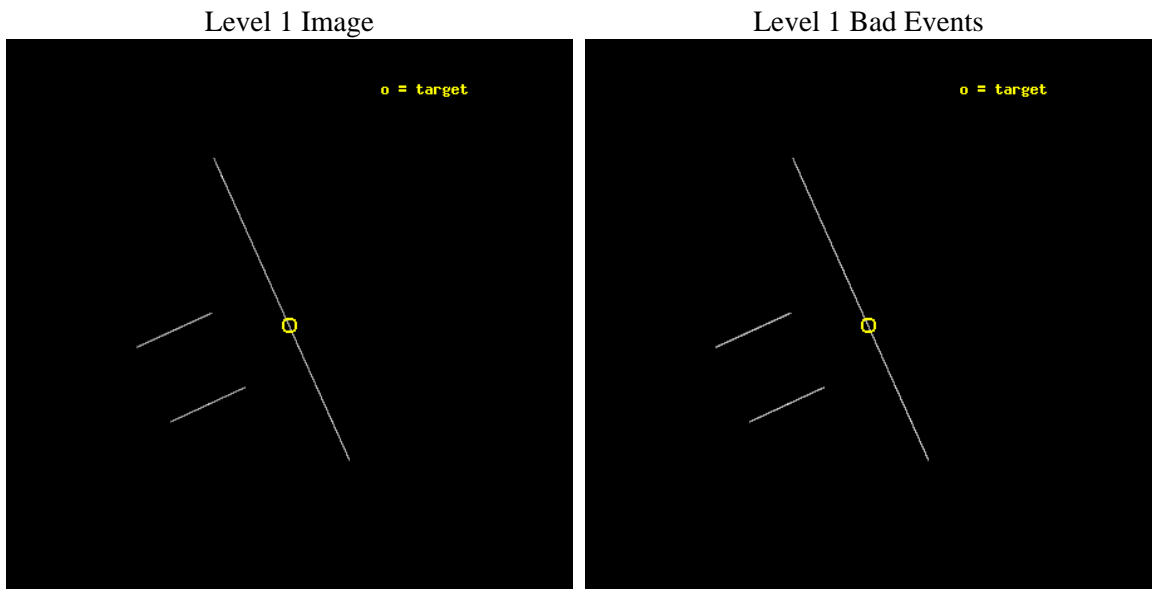
seq_num	501319	Sequence number
obs_id	11234	Observation id
title	Two Magnetar Candidates in HESS Supernova Remnants	Proposal title
observer	Dr. Eric Gotthelf	Principal investigator
object	XMM J173203.3-344518	Source name
ra_targ	263.014208	Observer's specified target RA [deg]
dec_targ	-34.754611	Observer's specified target Dec [deg]
ra_nom	263.01345450313	Nominal RA [deg]
dec_nom	-34.749794249268	Nominal Dec [deg]
roll_nom	65.539089258869	Nominal Roll [deg]
revision	2	Processing version of data
ontime	40077.0	Sum of GTIs [s]
livetime	39920.44921875	Livetime [s]
ontime2	40077.0	Sum of GTIs [s]
ontime3	40077.0	Sum of GTIs [s]
ontime5	40077.0	Sum of GTIs [s]
ontime6	40077.0	Sum of GTIs [s]
ontime7	40077.0	Sum of GTIs [s]
ontime8	40077.0	Sum of GTIs [s]
l2events	683785	Number of level 2 events



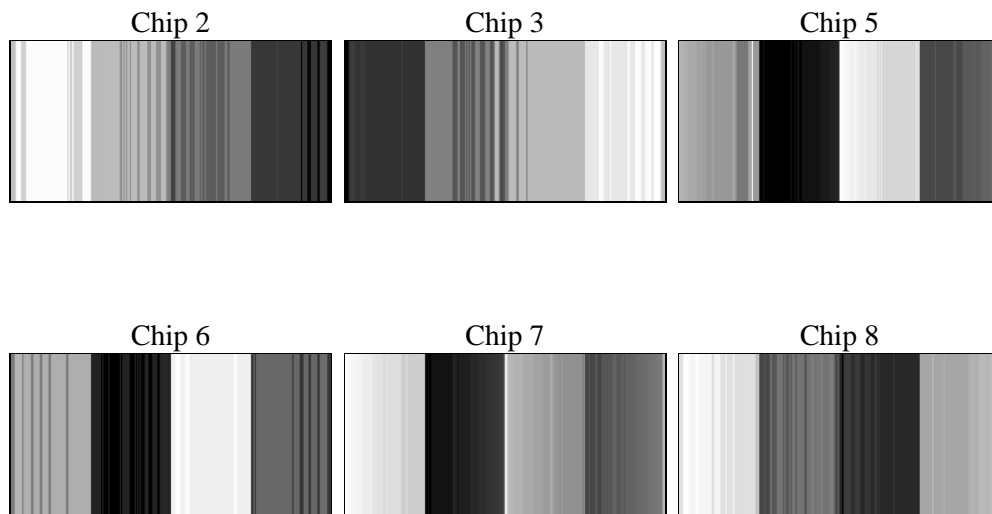
## 2 OBI

### 2.1 OBI

#### 2.1.1 Images



#### 2.1.2 Bias



### 2.1.3 Parameters

obi_num	0	Obi number	sched_exp_time	40000.000000	[s] Scheduled observation exposure time
ascdsver	8.4.5	Processing system revision	ontime	40077.0	Sum of GTIs [s]
caldbver	4.4.10	&#160	ontime2	40077.0	Sum of GTIs [s]
date	2012-06-26T01:47:08	Date and time of file creation	ontime3	40077.0	Sum of GTIs [s]
revision	2	Processing version of data	ontime5	40077.0	Sum of GTIs [s]
			ontime6	40077.0	Sum of GTIs [s]
			ontime7	40077.0	Sum of GTIs [s]
			ontime8	40077.0	Sum of GTIs [s]
			l1events	4176051	Number of level 1 events

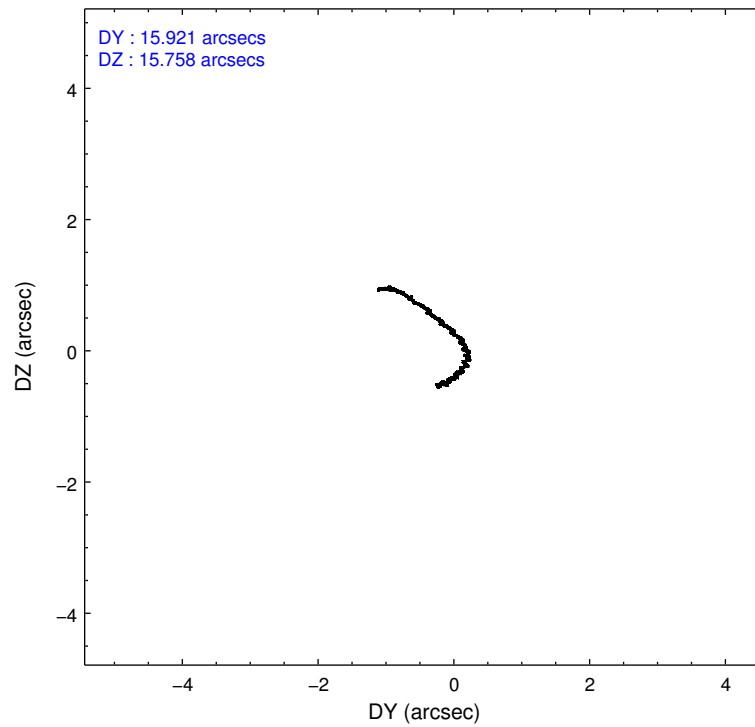
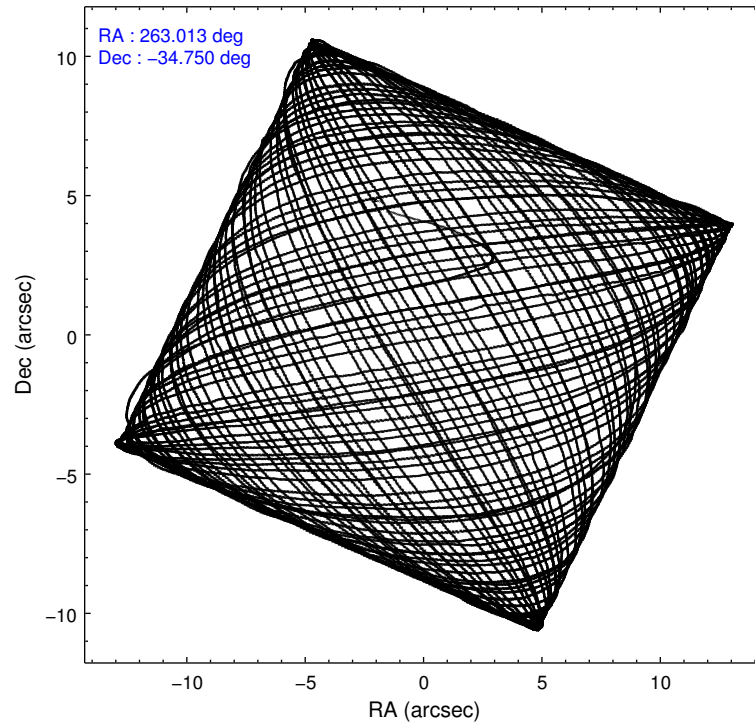
### 2.1.4 Events

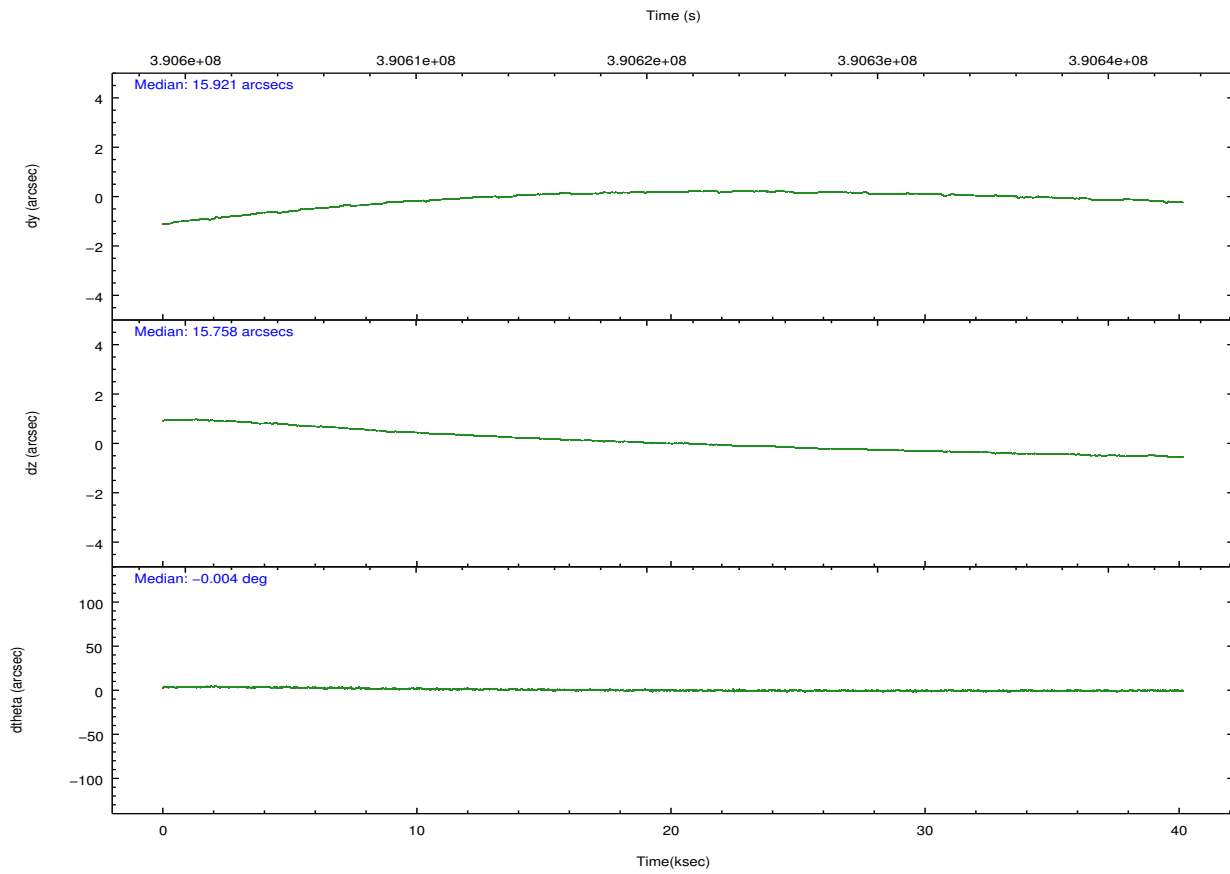
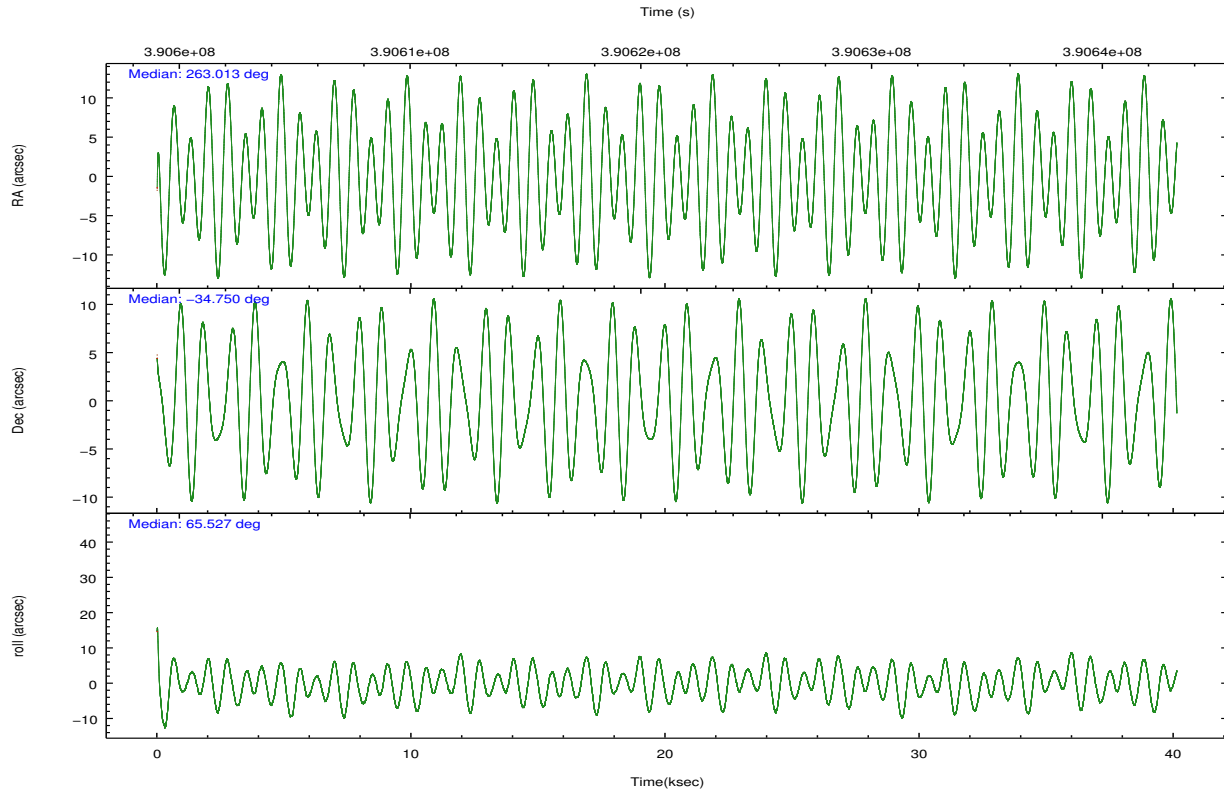
	ccd 2	ccd 3	ccd 5	ccd 6	ccd 7	ccd 8		ccd 2	ccd 3	ccd 5	ccd 6	ccd 7	ccd 8
level 1 events	556306	553983	1030798	575140	594279	865545	grade 0 events	8191	8815	247606	8905	19563	34687
rejected events	497408	487766	419396	494861	384393	711310		1%	1%	24%	1%	3%	4%
rejected %	89%	88%	40%	86%	64%	82%	grade 1 events	331	284	644	331	593	608
								0%	0%	0%	0%	0%	0%
							grade 2 events	25202	29556	205407	40674	56356	47726
								4%	5%	19%	7%	9%	5%
							grade 3 events	6794	7925	6690	7778	13721	16709
								1%	1%	0%	1%	2%	1%
							grade 4 events	7291	7002	6317	7481	13393	15928
								1%	1%	0%	1%	2%	1%
							grade 5 events	13159	14374	34703	14764	40890	21775
								2%	2%	3%	2%	6%	2%
							grade 6 events	11422	12921	145431	15448	106876	39194
								2%	2%	14%	2%	17%	4%
							grade 7 events	483916	473106	384000	479759	342887	688918
								86%	85%	37%	83%	57%	79%

## 2.2 Compared Parameters

Parameter	Planned	Actual	Parameter	Planned	Actual
Instrument	ACIS	ACIS	Obspar format version number	7	7
Detector	ACIS-235678	ACIS-235678	Obspar file type	PREDICTED	ACTUAL
Grating	NONE	NONE	Obspar update status	NONE	UPDATED
Data mode	CC33_FAINT	CC33_FAINT	CCD I0 on	N	N
Observation mode	POINTING	POINTING	CCD I1 on	N	N
[deg] Pointing RA	263.017137	263.0134545031297	CCD I2 on	O2	Y
[deg] Pointing Dec	-34.776981	-34.74979424926765	CCD I3 on	O1	Y
[deg] Pointing Roll	65.384557	65.53908925886948	CCD S0 on	N	N
[mm] SIM focus pos	-0.684267	-0.6828225247311905	CCD S1 on	Y	Y
[mm] SIM defocus	0	0.001444936568705701	CCD S2 on	Y	Y
[mm] SIM translation stage pos	-190.132523	-190.1425803651734	CCD S3 on	Y	Y
[mm] SIM translation stage offset	0	0.01005778216563158	CCD S4 on	Y	Y
[s] Observation start time (MET)	390601205.184000	390600010.60343	CCD S5 on	N	N
Observation start date	2010-05-18T20:18:59	2010-05-18T20:00:10	Number of optional ACIS chips dropped	0	0
[s] Observation end time (MET)	390641205.184000	390642001.78056	On-chip summing requested	N	N
Observation end date	2010-05-19T07:25:39	2010-05-19T07:40:01	Subarray requested	NONE	NONE
Read mode	CONTINUOUS	CONTINUOUS	Alternating exposures requested	N	N
			[s] Primary exposure time	0.000000	0

## 2.3 Aspect



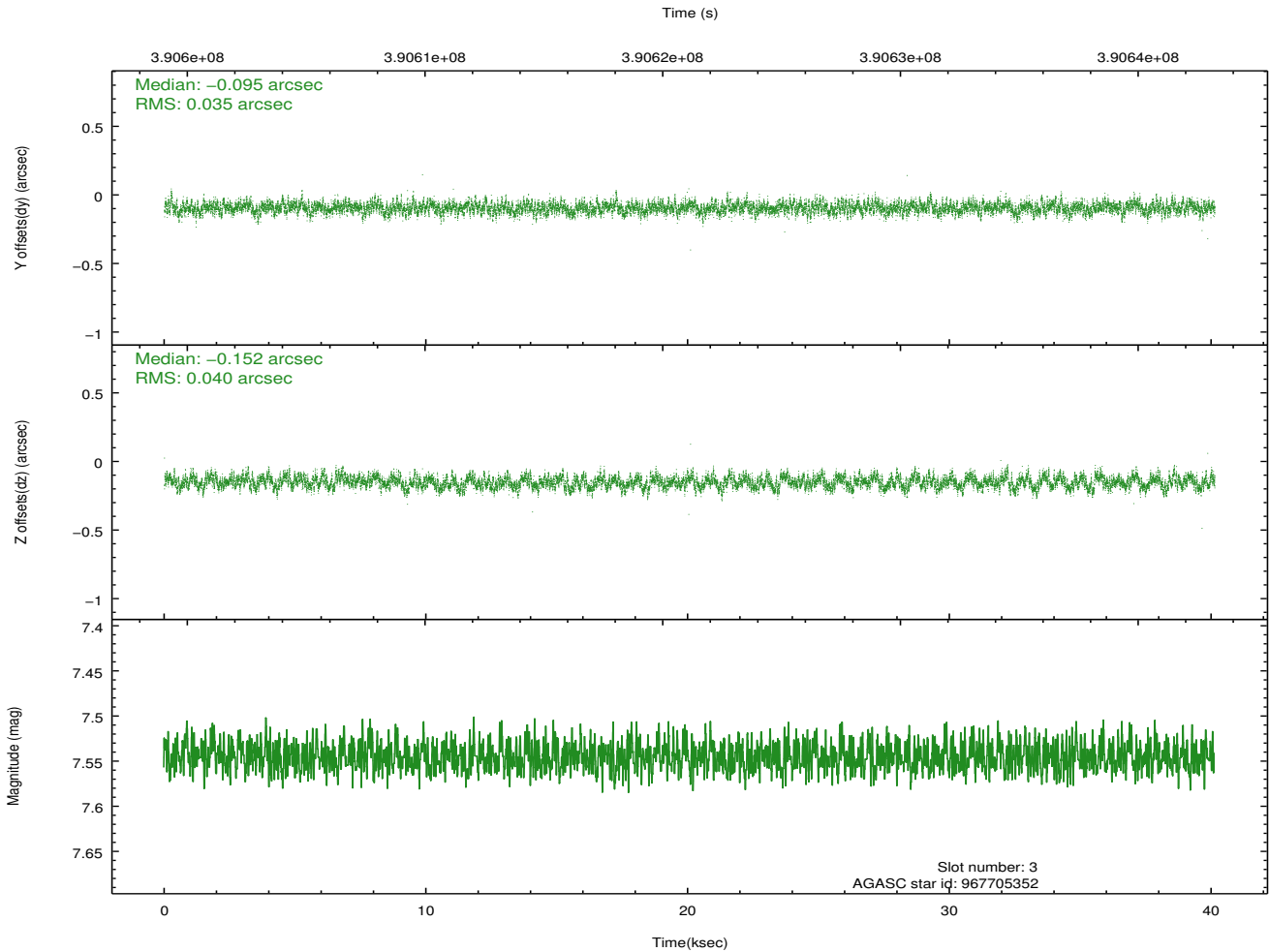
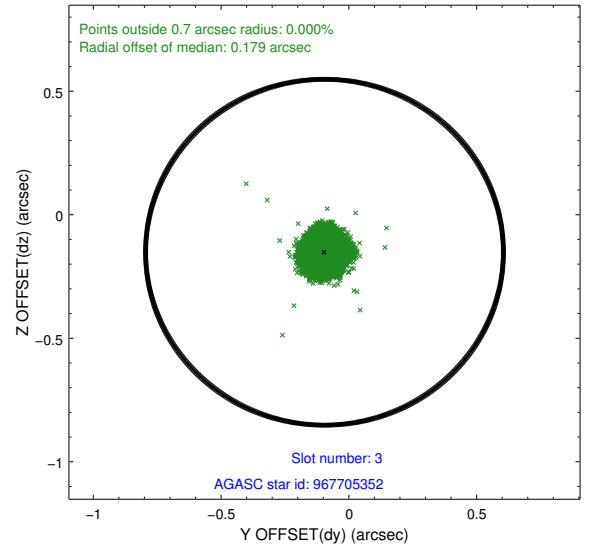
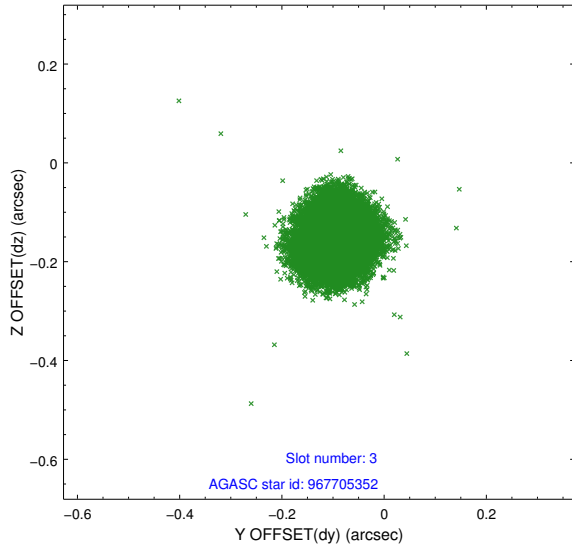


### Slot Statistics

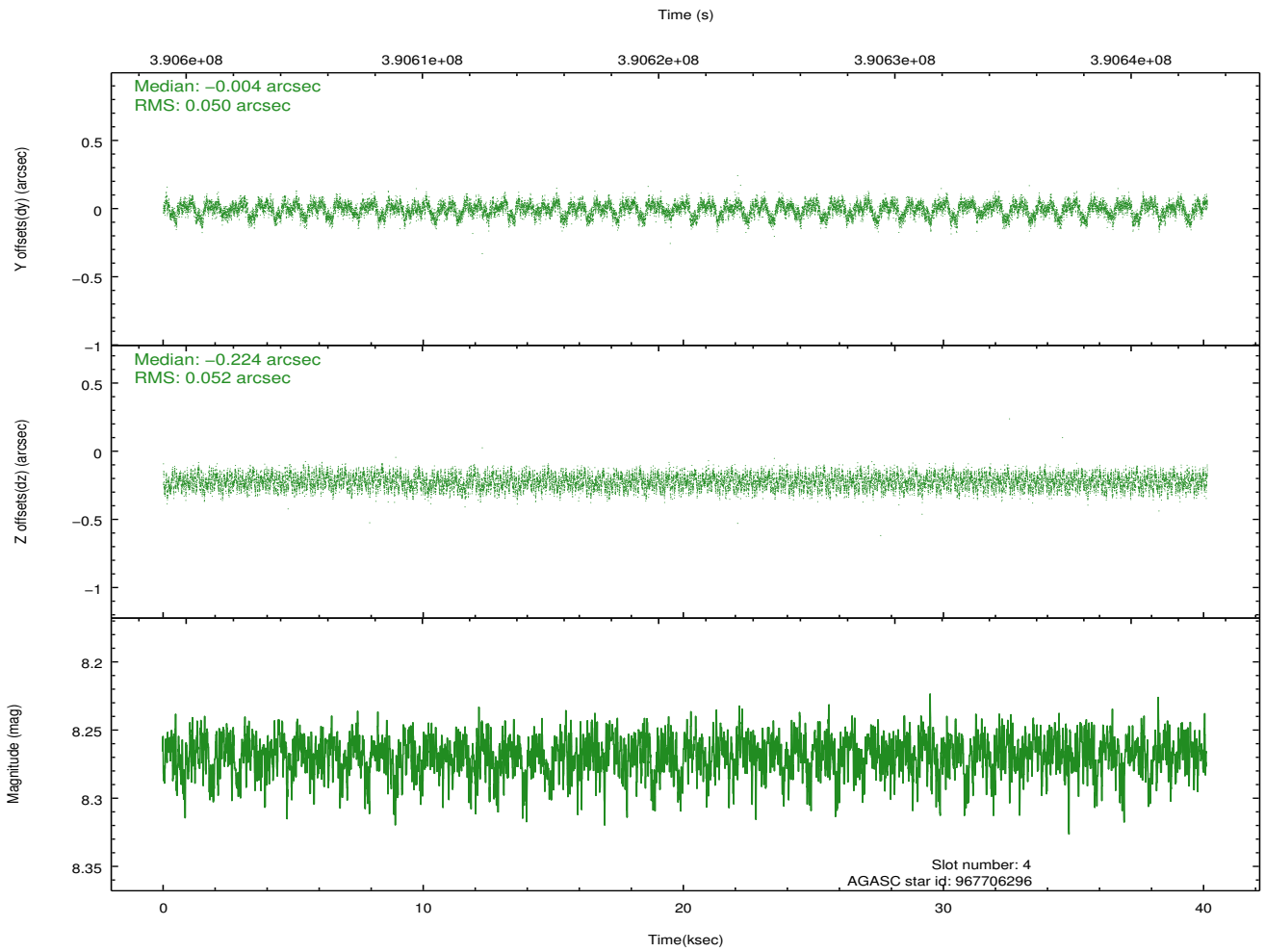
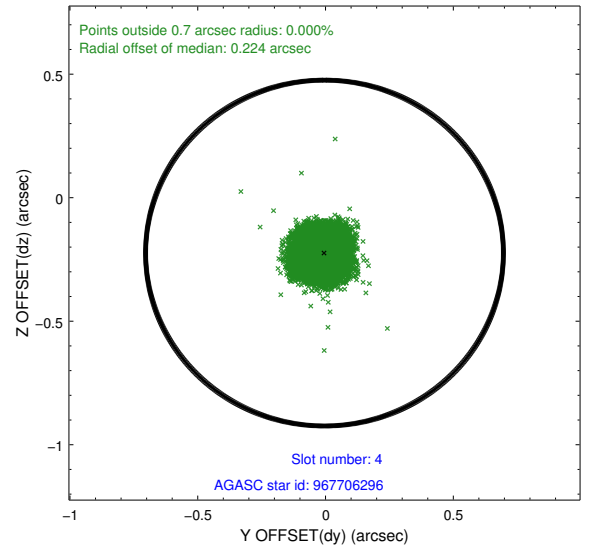
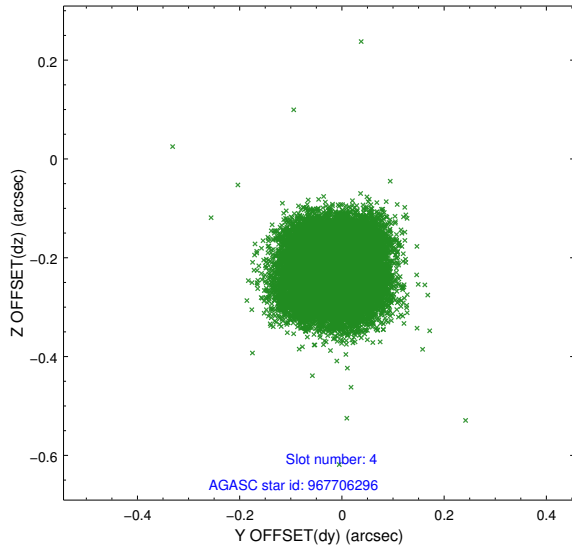
slot	status	id	mag	n_pts	med_dy	med_dz	dr1	dr2	ra	dec	mean_y	mean_z
0	FID	ACIS-S-2	6.90	9790	-0.097	-0.025	0.013	0.026	0.000000	0.000000	-768.89	-1737.22
1	FID	ACIS-S-4	6.99	9790	0.180	0.053	0.009	0.016	0.000000	0.000000	2144.64	171.33
2	FID	ACIS-S-5	7.02	9790	-0.112	-0.021	0.012	0.037	0.000000	0.000000	-1821.75	164.94
3	GUIDE	967705352	7.54	19577	-0.095	-0.152	0.057	0.090	262.627740	-34.539041	295.65	1405.56
4	GUIDE	967706296	8.27	19571	-0.004	-0.224	0.078	0.119	262.582774	-34.480498	430.90	1615.20
5	GUIDE	967708040	8.33	19566	-0.086	0.139	0.062	0.100	263.191213	-34.768015	243.72	-454.50
6	GUIDE	967708376	9.20	19527	0.278	0.127	0.105	0.172	263.159741	-35.002821	-563.50	-721.11
7	GUIDE	967839136	8.43	19566	-0.087	0.114	0.070	0.114	263.702969	-34.908984	405.69	-2041.39

## 2.4 Star Slots

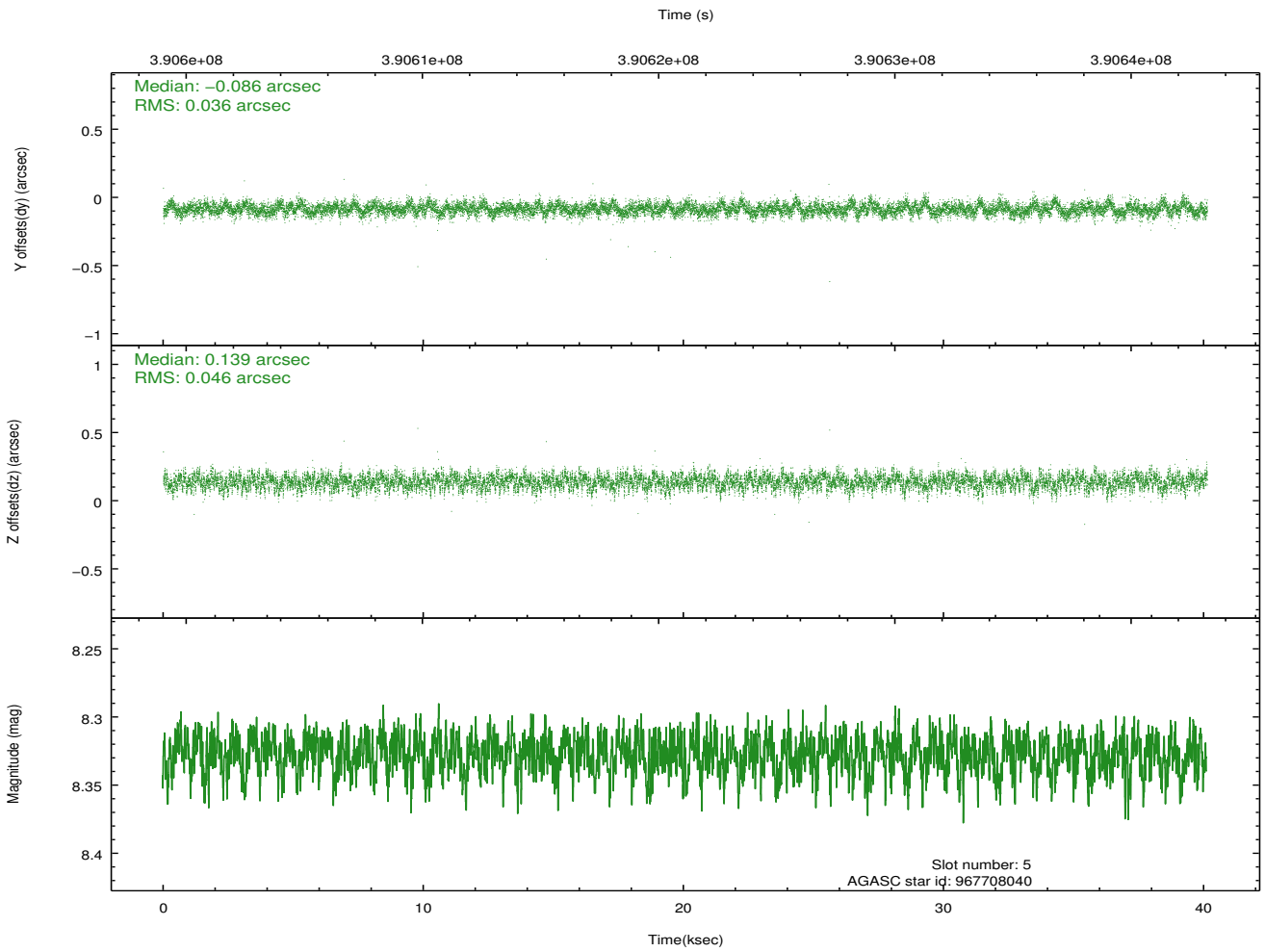
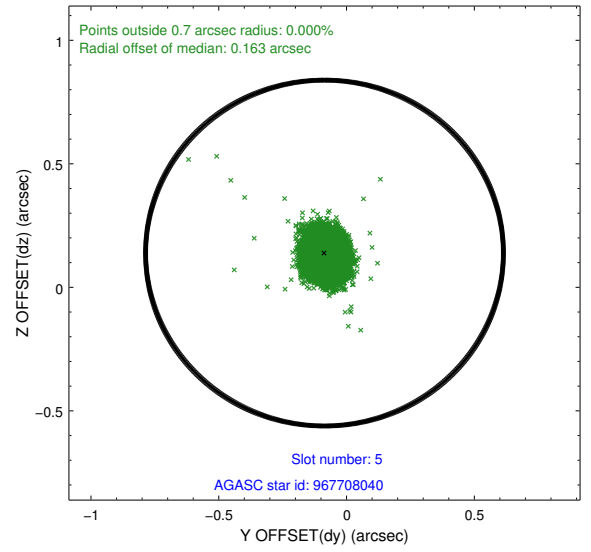
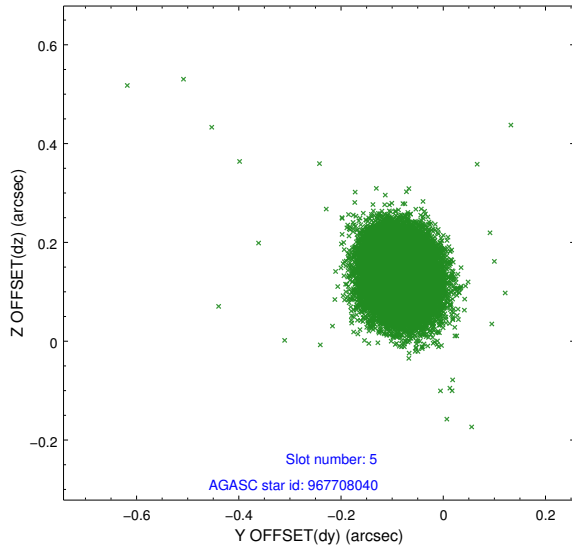
### 2.4.1 Slot 3



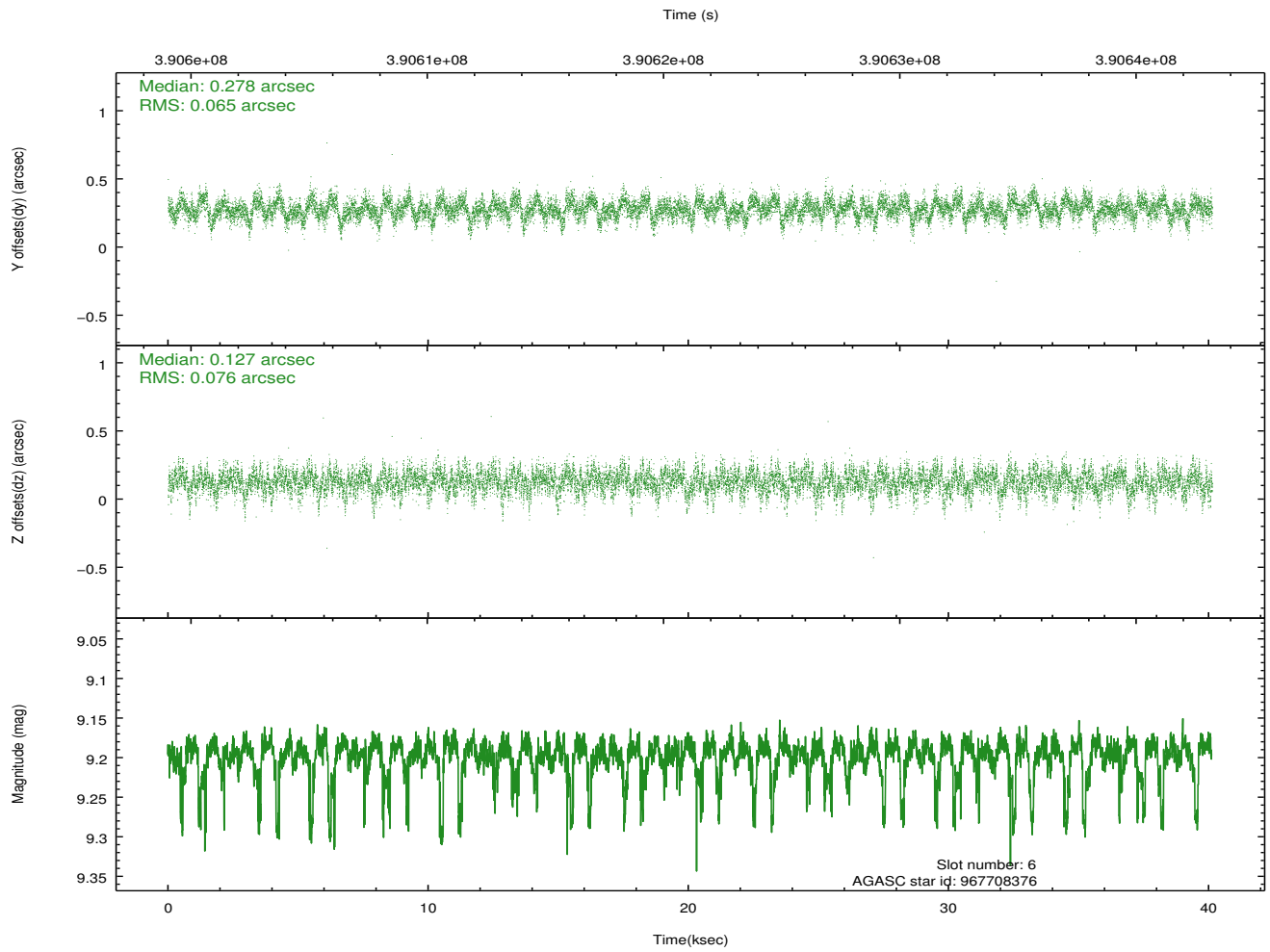
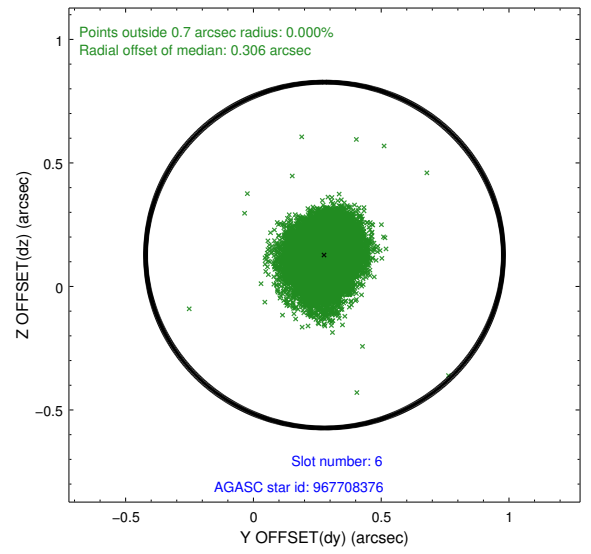
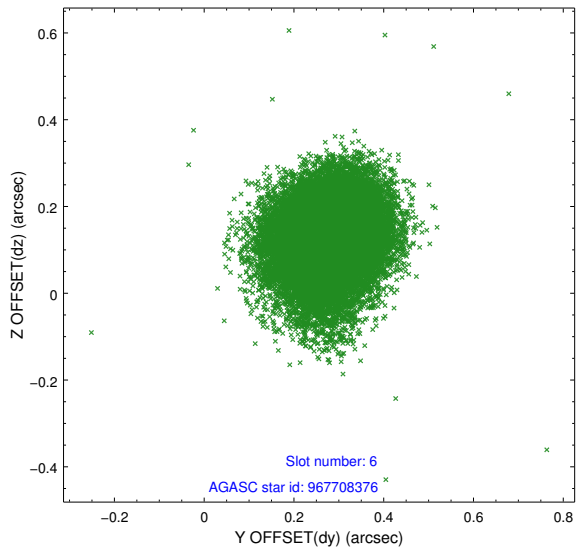
### 2.4.2 Slot 4



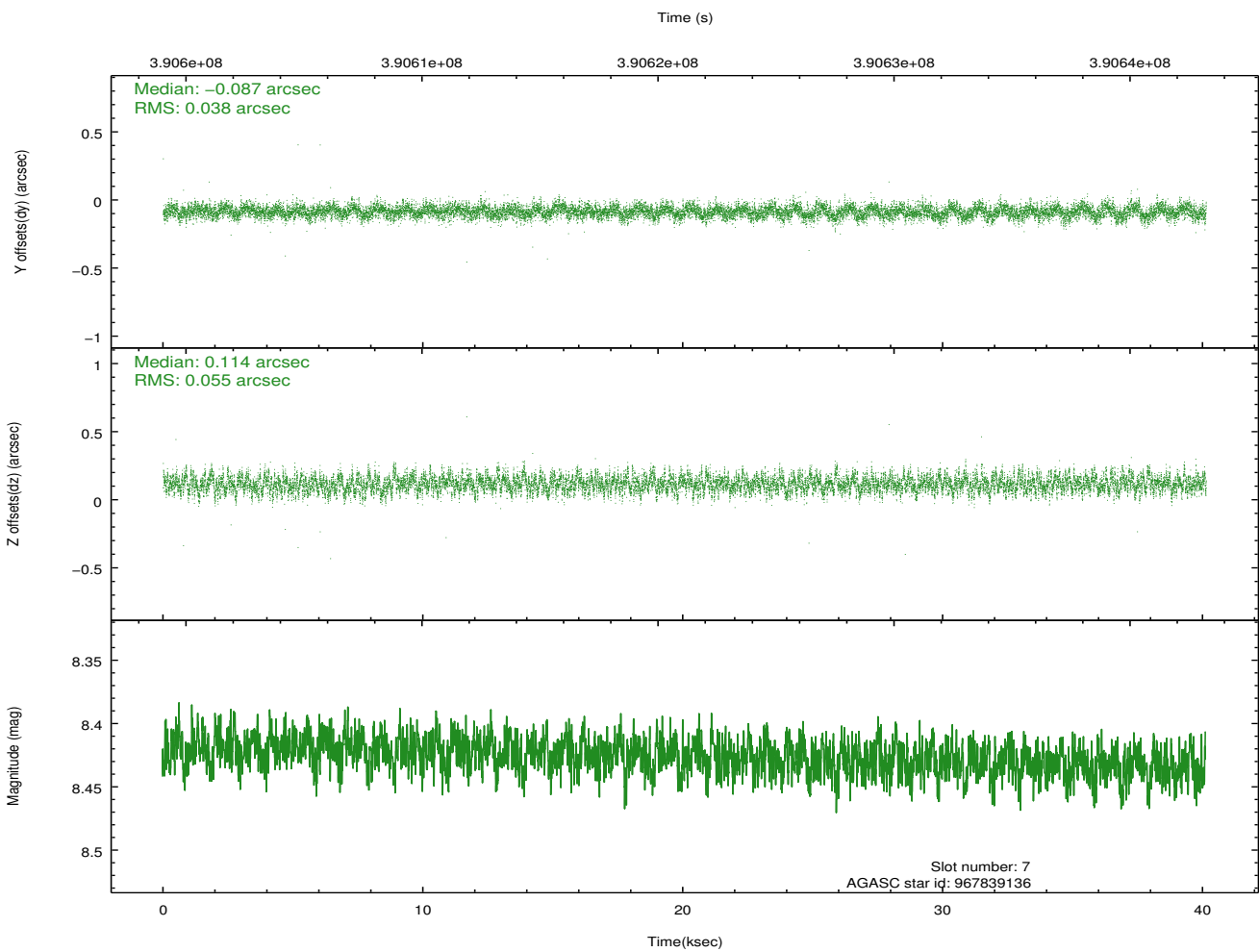
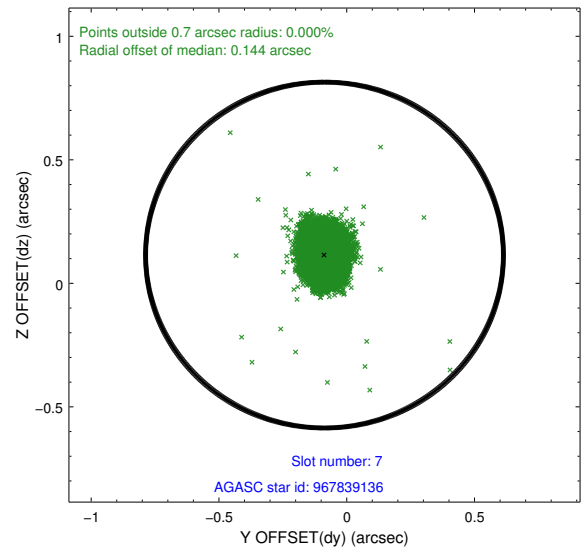
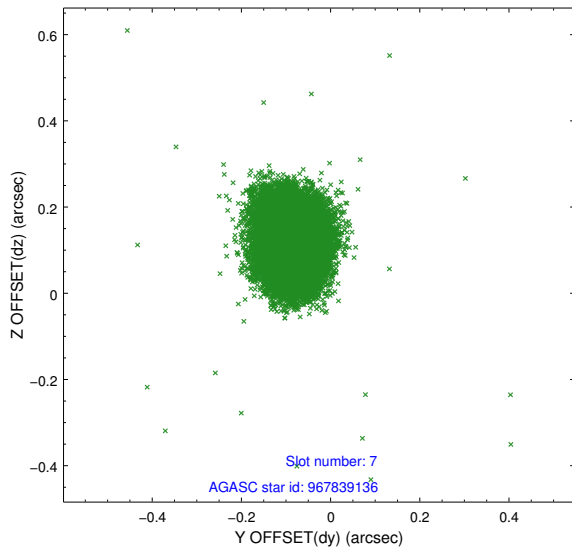
### 2.4.3 Slot 5



### 2.4.4 Slot 6

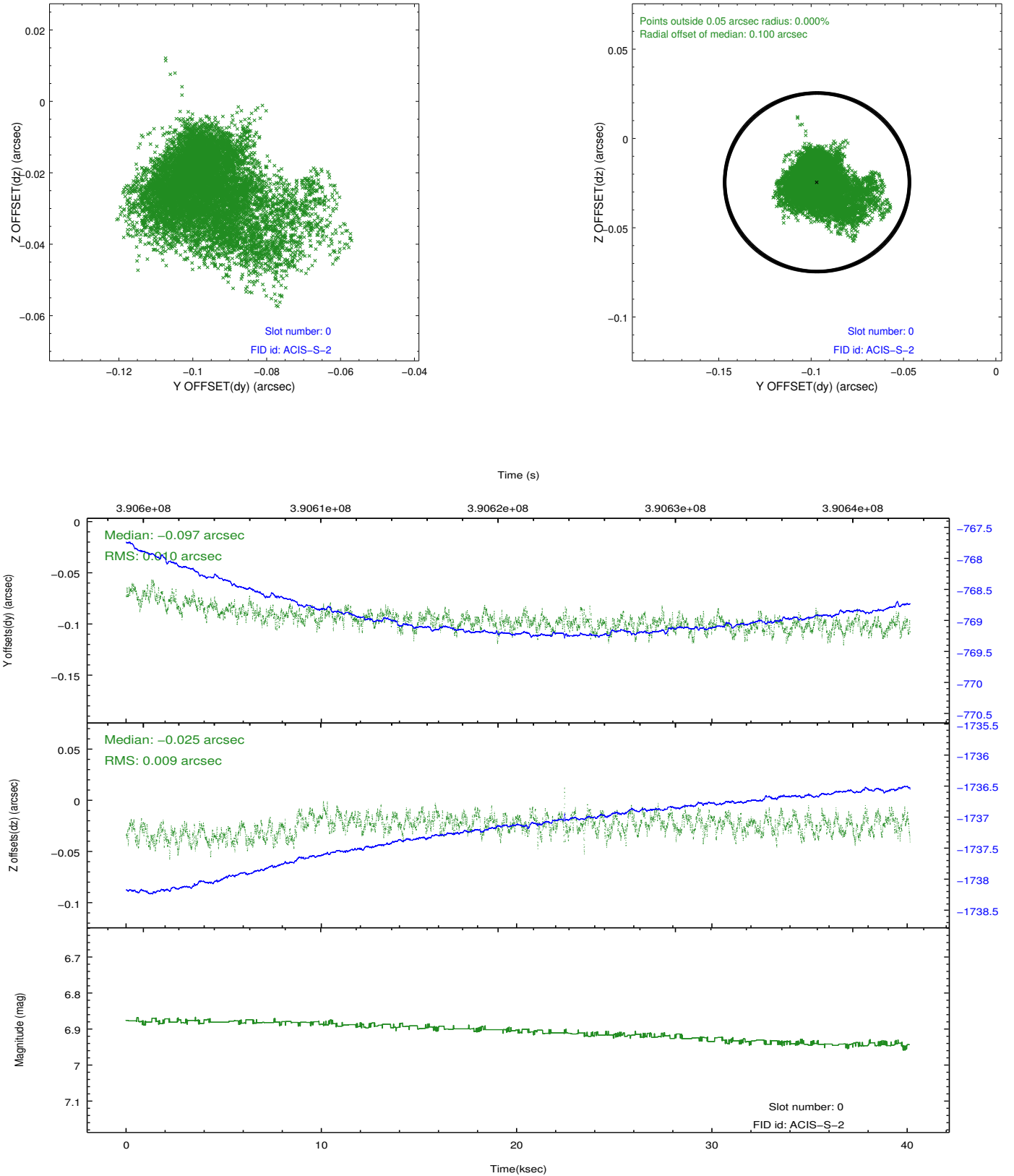


## 2.4.5 Slot 7

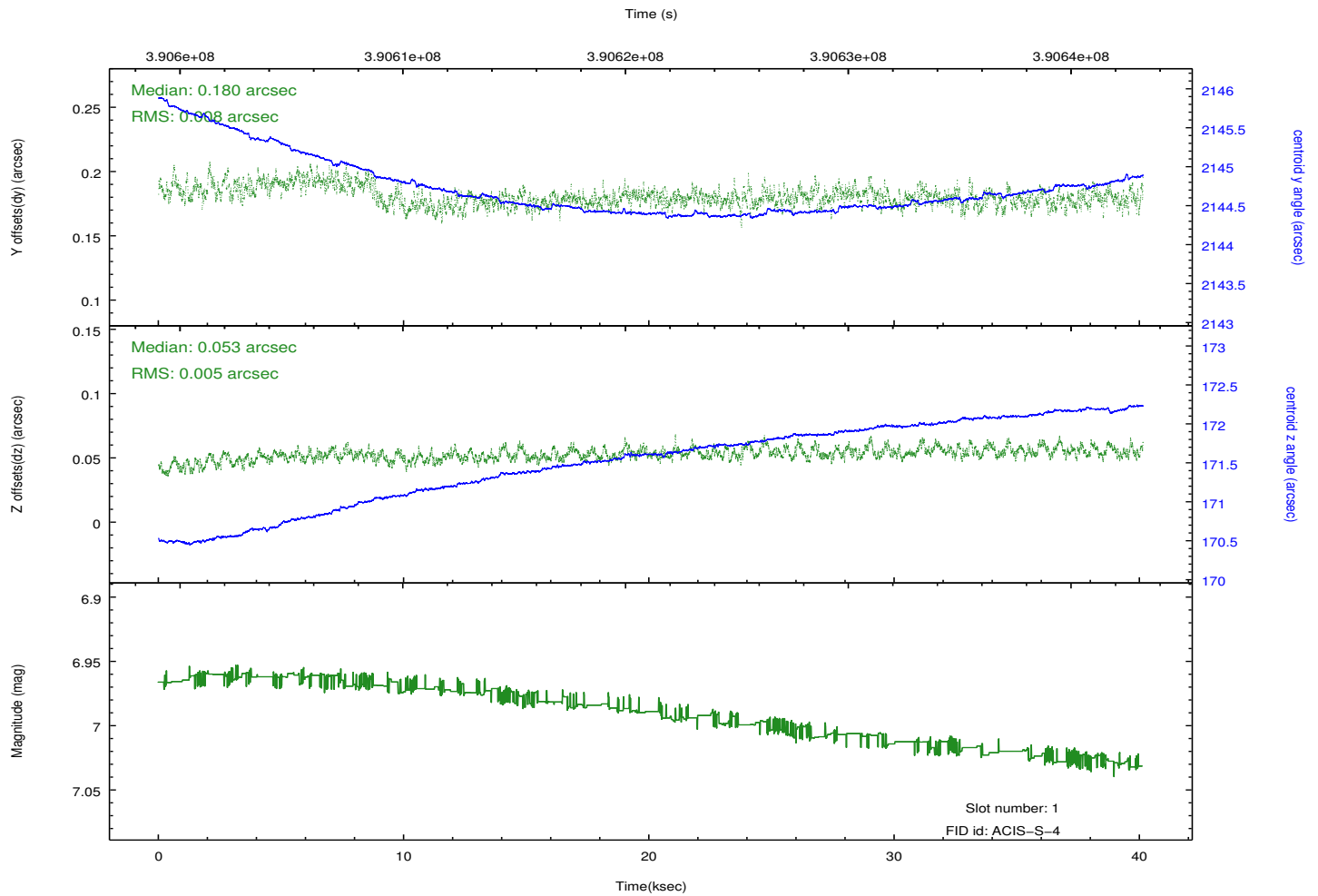
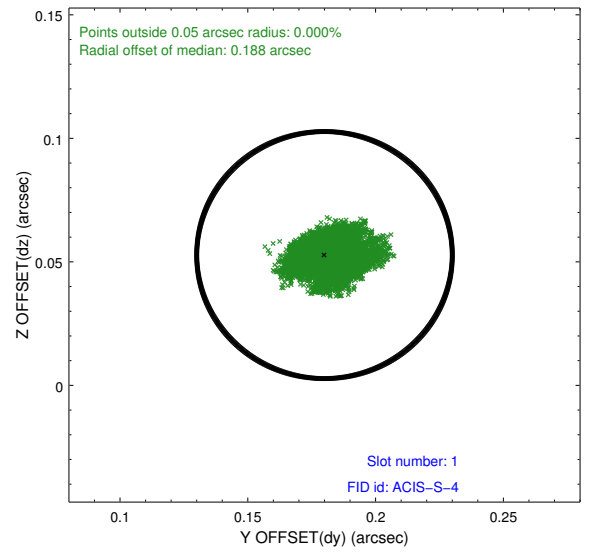
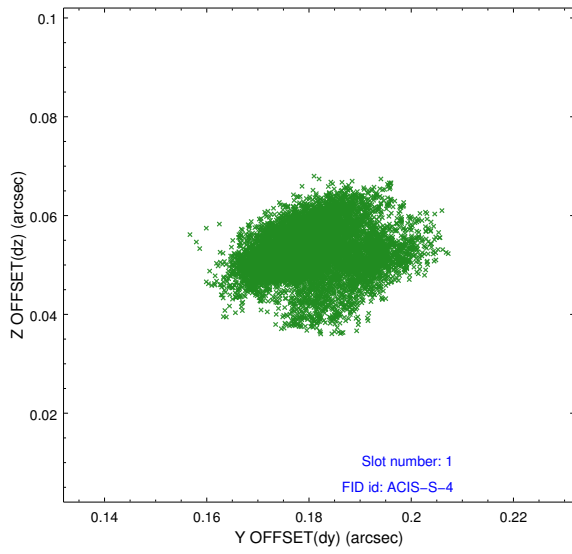


## 2.5 FID Slots

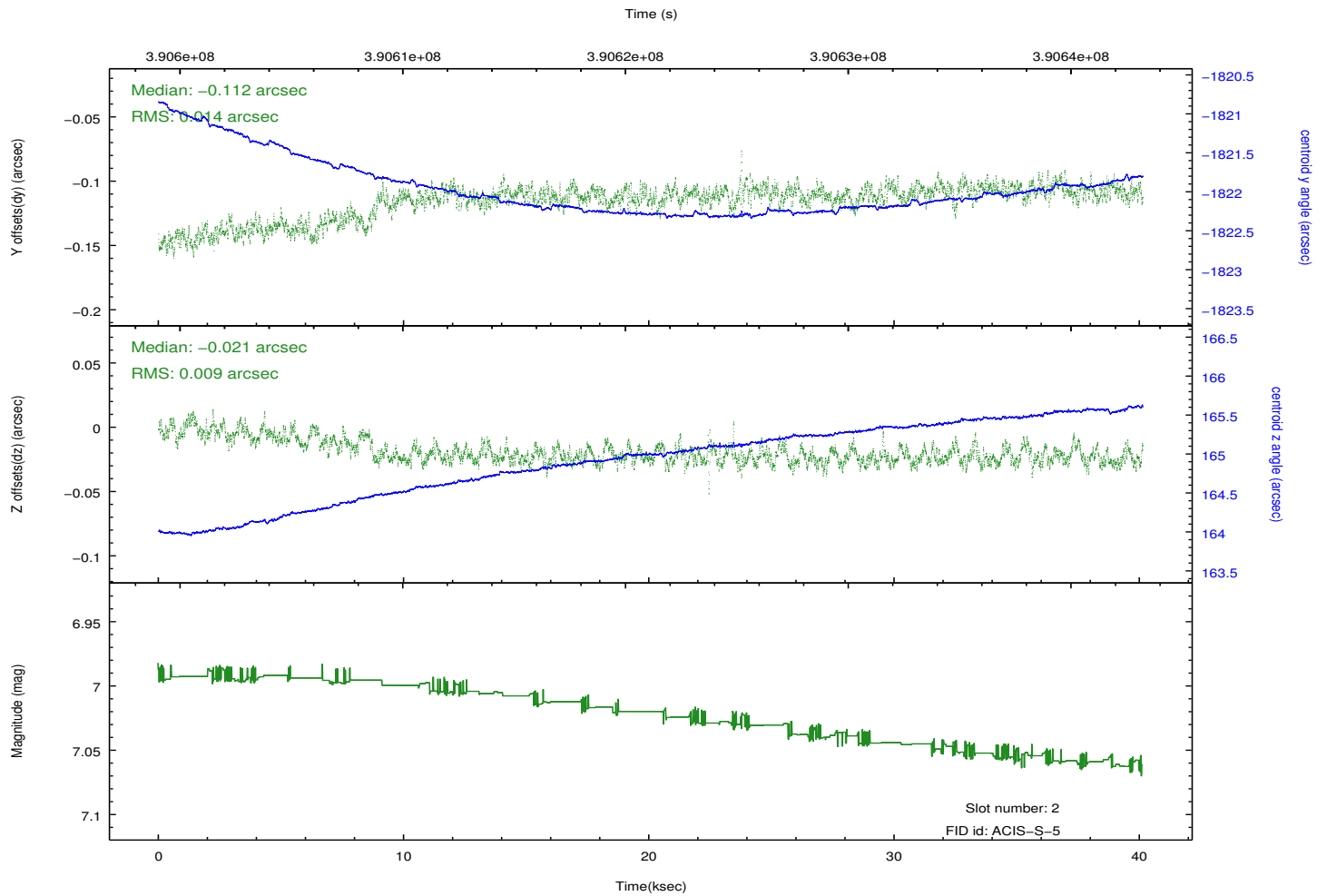
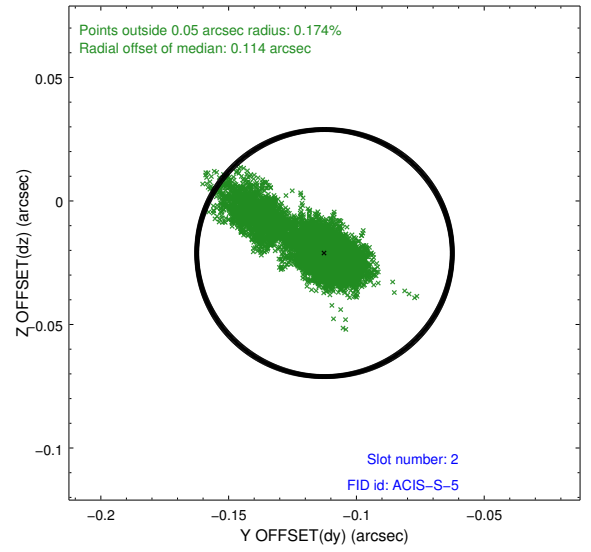
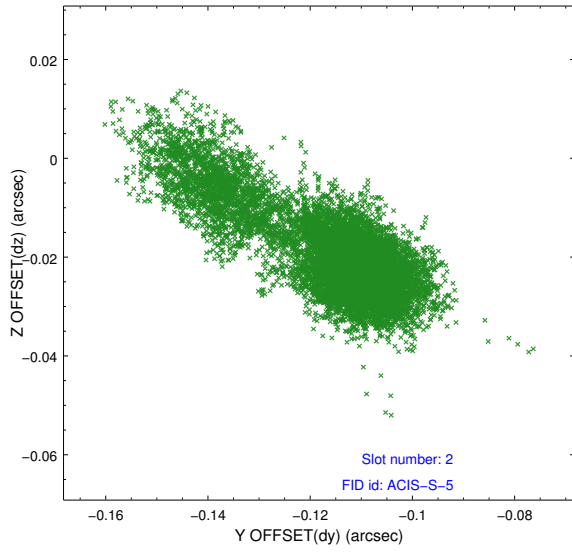
### 2.5.1 Slot 0



## 2.5.2 Slot 1



### 2.5.3 Slot 2



# A Summary

## A.1 Status

V&V Scientist	Joy Nichols
V&V Date (YYYY-MM-DD)	2012.06.26
V&V Edition	1
V&V Disposition and Status	OK
V&V Charge Time	40.077

## A.2 Comments