

# V&V Reference Report

## L2 ASCDS Version : 8.4.5

Observation 11304 - L2 Version 2  
Chandra X-Ray Center

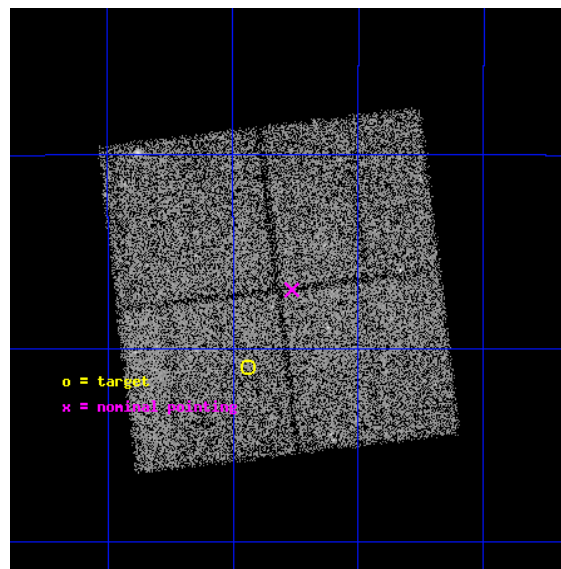
L2 Processing Date : Jun 25 2012

## Contents

<b>1</b>	<b>Front</b>	<b>2</b>
<b>2</b>	<b>OBI</b>	<b>3</b>
2.1	OBI . . . . .	3
2.1.1	Images . . . . .	3
2.1.2	Bias . . . . .	3
2.1.3	Parameters . . . . .	4
2.1.4	Events . . . . .	4
2.2	Compared Parameters . . . . .	5
2.3	Aspect . . . . .	6
2.4	Star Slots . . . . .	9
2.4.1	Slot 3 . . . . .	9
2.4.2	Slot 4 . . . . .	10
2.4.3	Slot 5 . . . . .	11
2.4.4	Slot 6 . . . . .	12
2.4.5	Slot 7 . . . . .	13
2.5	FID Slots . . . . .	14
2.5.1	Slot 0 . . . . .	14
2.5.2	Slot 1 . . . . .	15
2.5.3	Slot 2 . . . . .	16
<b>A</b>	<b>Summary</b>	<b>17</b>
A.1	Status . . . . .	17
A.2	Comments . . . . .	17

# 1 Front

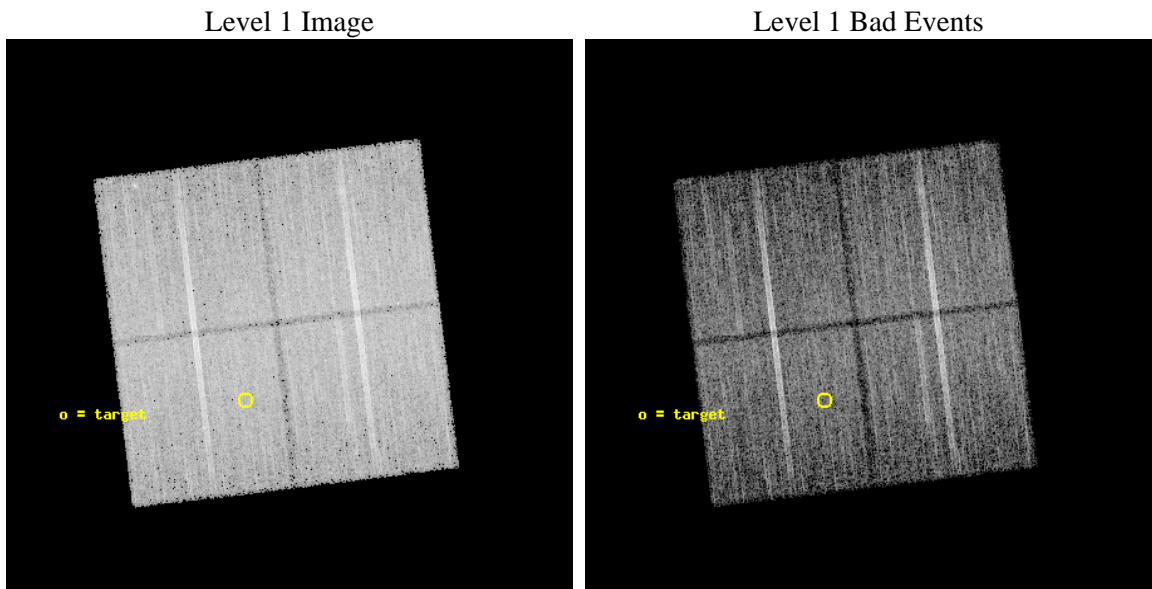
seq_num	600823	Sequence number
obs_id	11304	Observation id
title	The Deepest Stellar X-ray/optical Census of the Bulge	Proposal tit
observer	Dr William Clarkson	Principal investigator
object	SWEEPS_FIELD	Source name
dtycycle	0	&#160
cycle	P	events from which exps? Prim/Second/Both
ra_targ	269.735558	Observer's specified target RA [deg]
dec_targ	-29.18259	Observer's specified target Dec [deg]
ra_nom	269.69127961648	Nominal RA [deg]
dec_nom	-29.116248372292	Nominal Dec [deg]
roll_nom	83.079296816625	Nominal Roll [deg]
revision	2	Processing version of data
ontime	20063.200154305	Sum of GTIs [s]
livetime	19801.059673975	Livetime [s]
ontime0	20063.200154305	Sum of GTIs [s]
ontime1	20063.200154305	Sum of GTIs [s]
ontime2	20063.200154305	Sum of GTIs [s]
ontime3	20063.200154305	Sum of GTIs [s]
l2events	70021	Number of level 2 events



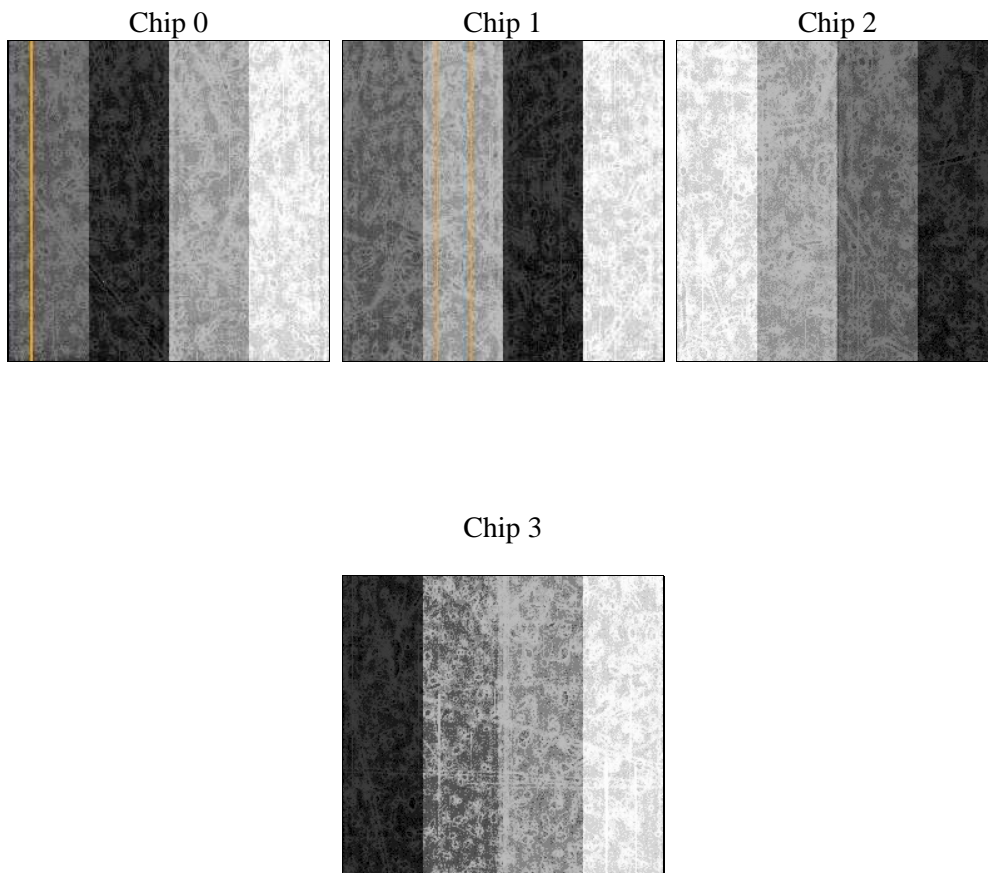
## 2 OBI

### 2.1 OBI

#### 2.1.1 Images



#### 2.1.2 Bias



### 2.1.3 Parameters

obi_num	0	Obi number	sched_exp_time	19928.181000	[s] Scheduled observation exposure time
ascdsver	8.4.5	Processing system revision	ontime	20063.200154305	Sum of GTIs [s]
caldsver	4.4.10	&#160	ontime0	20063.200154305	Sum of GTIs [s]
date	2012-06-25T10:43:23	Date and time of file creation	ontime1	20063.200154305	Sum of GTIs [s]
revision	2	Processing version of data	ontime2	20063.200154305	Sum of GTIs [s]
			ontime3	20063.200154305	Sum of GTIs [s]
			l1events	657388	Number of level 1 events

### 2.1.4 Events

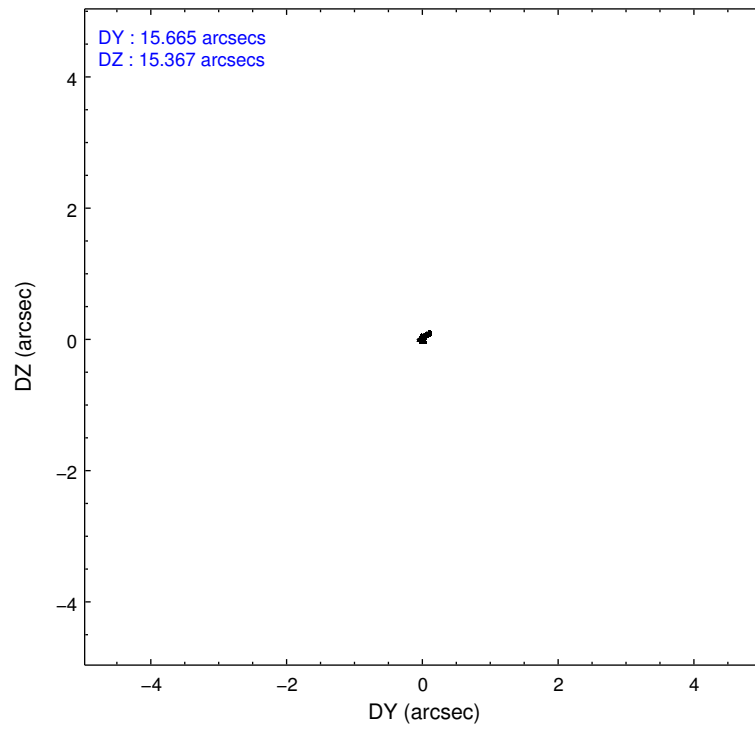
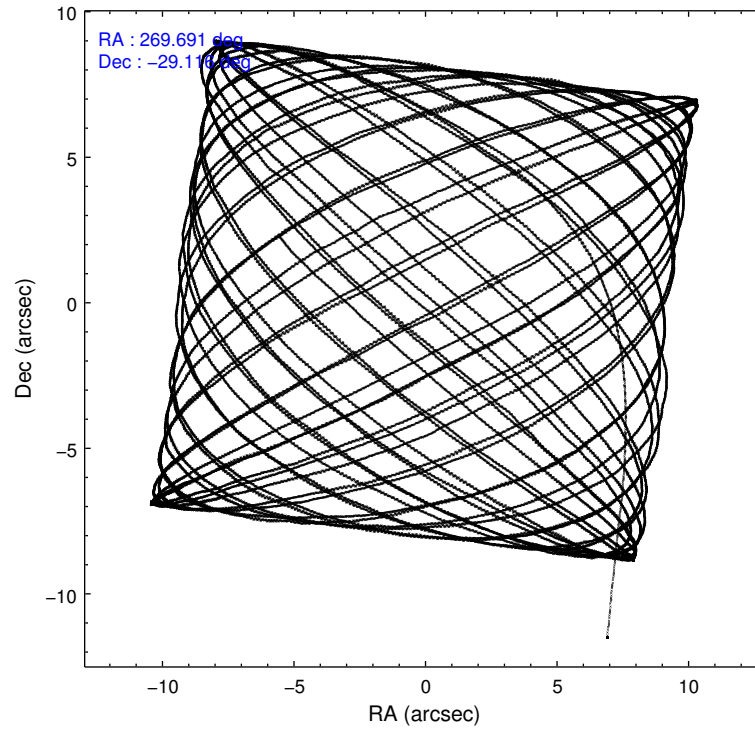
	ccd 0	ccd 1	ccd 2	ccd 3
level 1 events	157825	161736	172893	164934
rejected events	137087	139660	152828	145417
rejected %	86%	86%	88%	88%

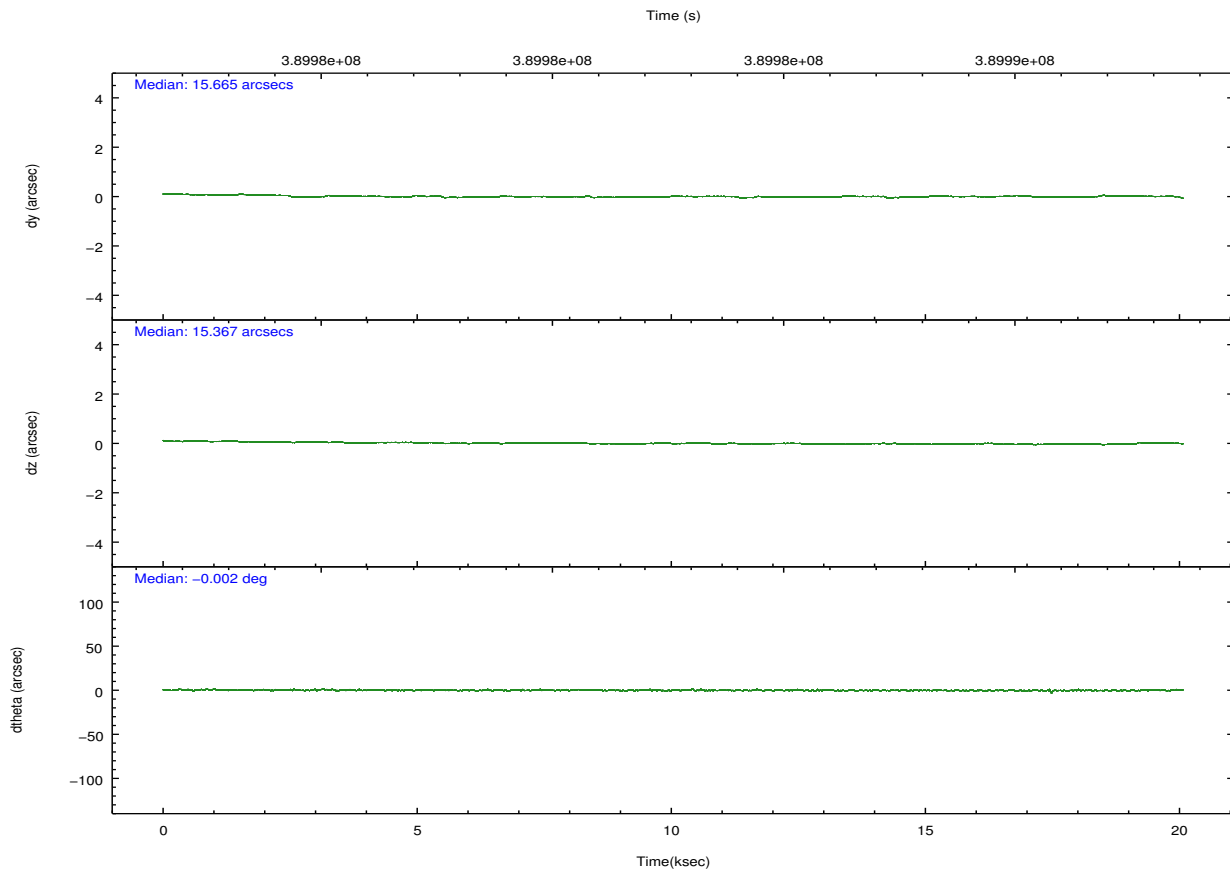
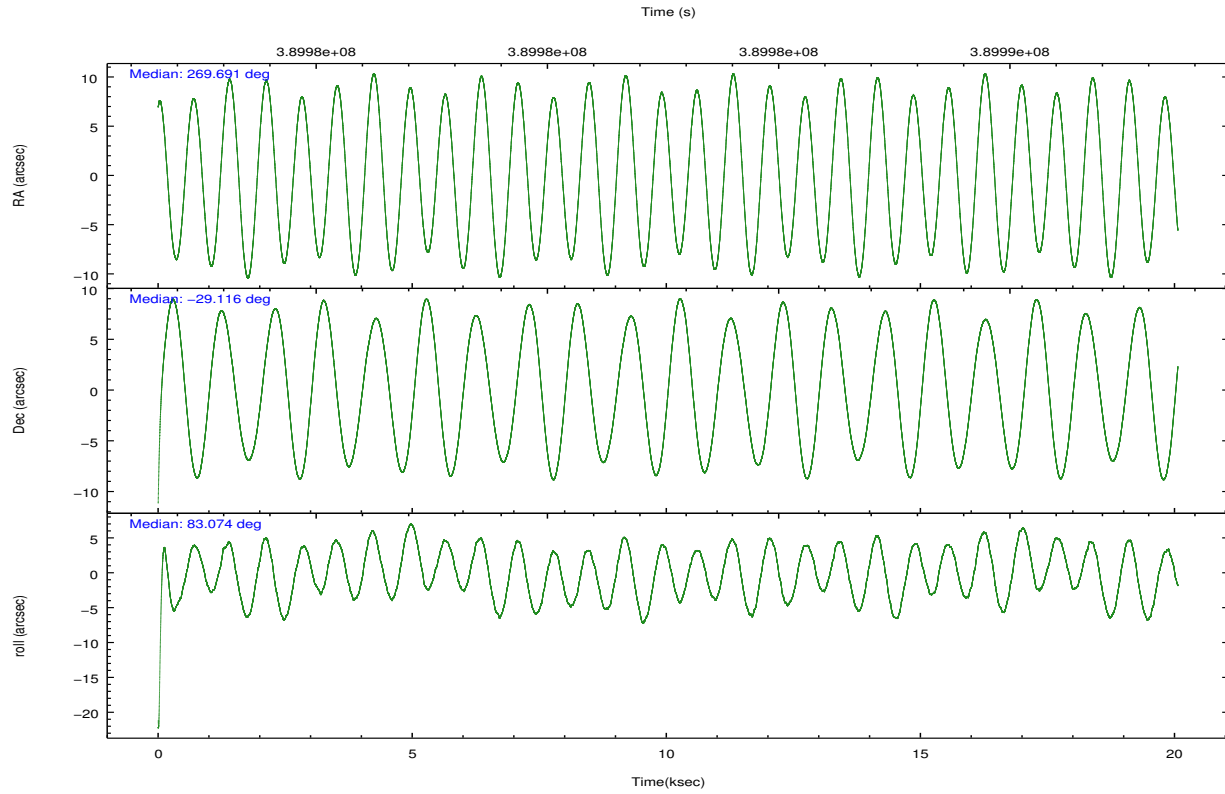
	ccd 0	ccd 1	ccd 2	ccd 3
grade 0 events	11793	12503	9695	9332
	7%	7%	5%	5%
grade 1 events	482	433	121	115
	0%	0%	0%	0%
grade 2 events	5337	5563	4586	3998
	3%	3%	2%	2%
grade 3 events	2236	2403	1917	1952
	1%	1%	1%	1%
grade 4 events	2142	2299	1933	1931
	1%	1%	1%	1%
grade 5 events	6791	7327	5997	7216
	4%	4%	3%	4%
grade 6 events	3925	4364	3404	3625
	2%	2%	1%	2%
grade 7 events	125119	126844	145240	136765
	79%	78%	84%	82%

## 2.2 Compared Parameters

Parameter	Planned	Actual	Parameter	Planned	Actual
Instrument	ACIS	ACIS	Obspar format version number	7	7
Detector	ACIS-0123	ACIS-0123	Obspar file type	PREDICTED	ACTUAL
Grating	NONE	NONE	Obspar update status	NONE	UPDATED
Data mode	VFAINT	VFAINT	Number of optional ACIS chips dropped	0	0
Observation mode	POINTING	POINTING	On-chip summing requested	N	N
[deg] Pointing RA	269.703738	269.6912796164797	Subarray requested	NONE	NONE
[deg] Pointing Dec	-29.141494	-29.1162483722918	Alternating exposures requested	N	N
[deg] Pointing Roll	82.876698	83.07929681662471	[s] Primary exposure time	0.000000	3.1
[mm] SIM focus pos	-0.782348	-0.7809083437167272			
[mm] SIM defocus	0	0.001439871863259334			
[mm] SIM translation stage pos	-233.592463	-233.5874344608287			
[mm] SIM translation stage offset	0	-0.005018542100998502			
[s] Observation start time (MET)	389972716.184000	389970996.77142			
Observation start date	2010-05-11T13:44:10	2010-05-11T13:16:36			
[s] Observation end time (MET)	389992645.184000	389992874.37253			
Observation end date	2010-05-11T19:16:19	2010-05-11T19:21:14			
Read mode	TIMED	TIMED			

## 2.3 Aspect



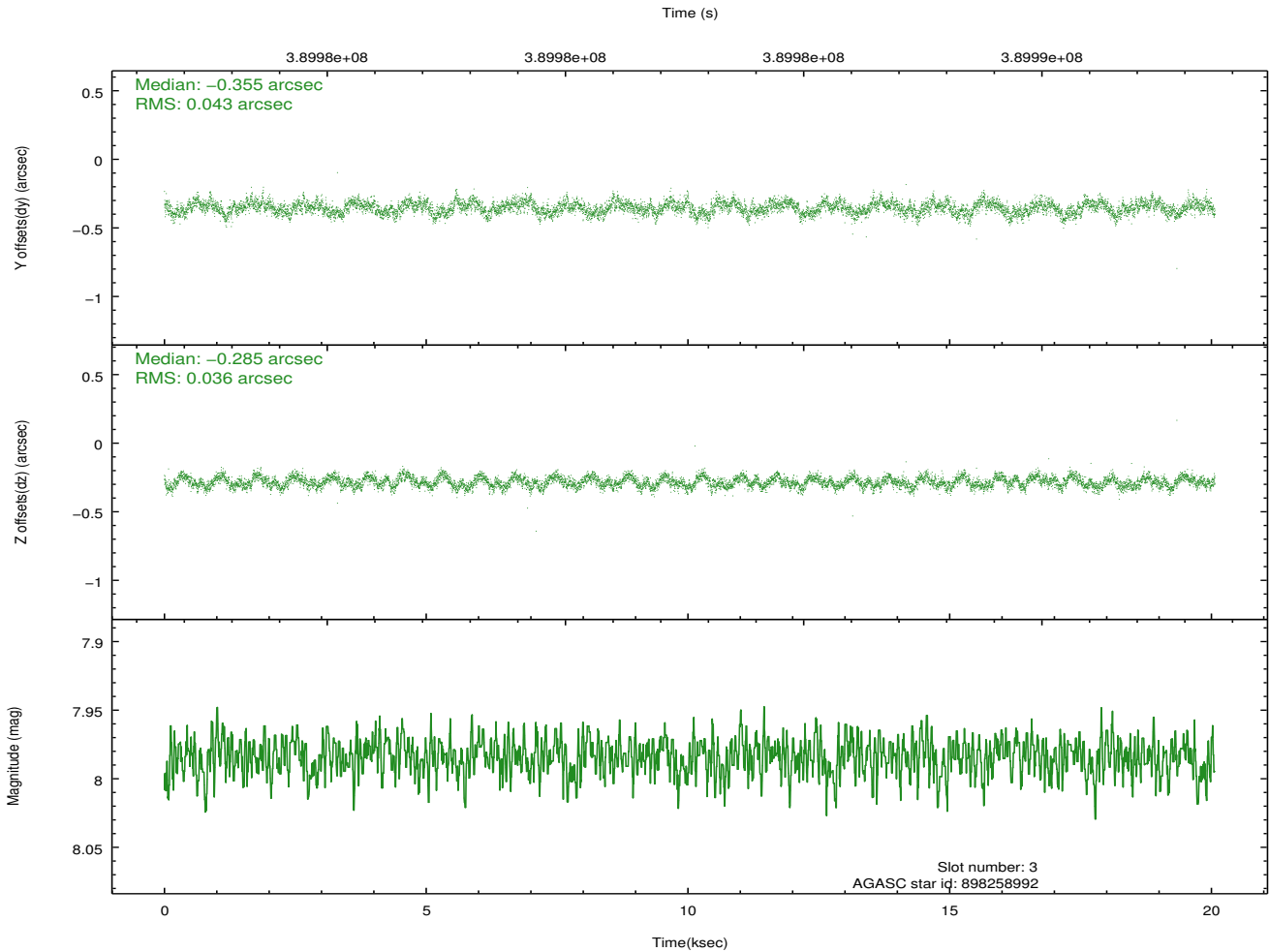
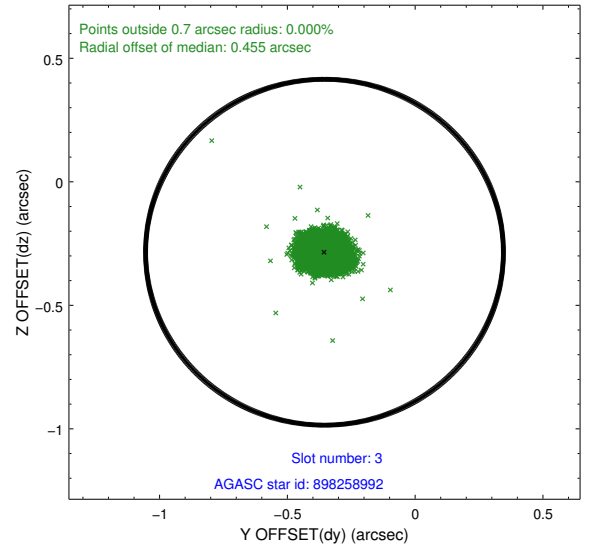
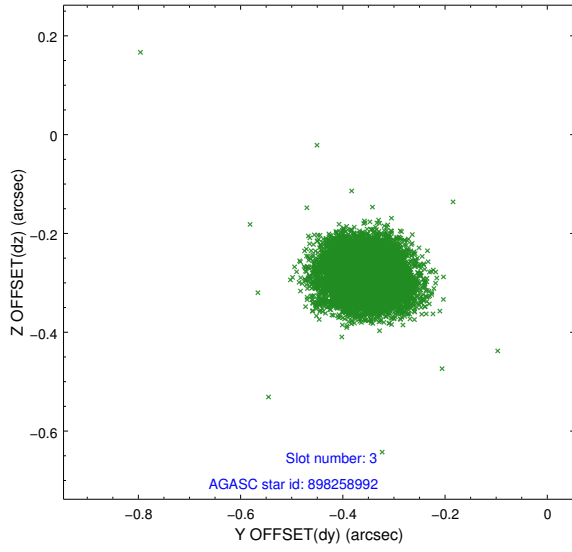


### Slot Statistics

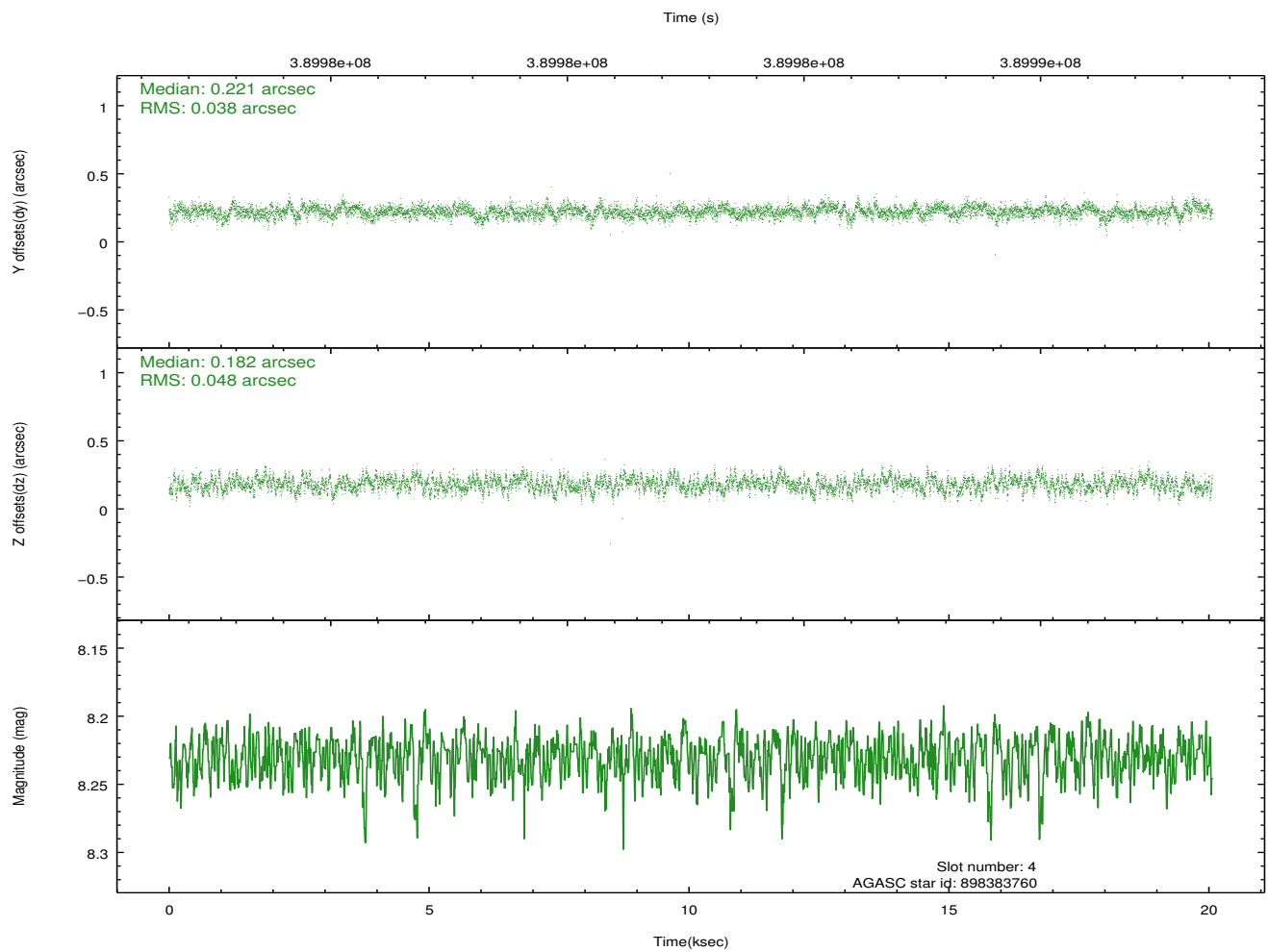
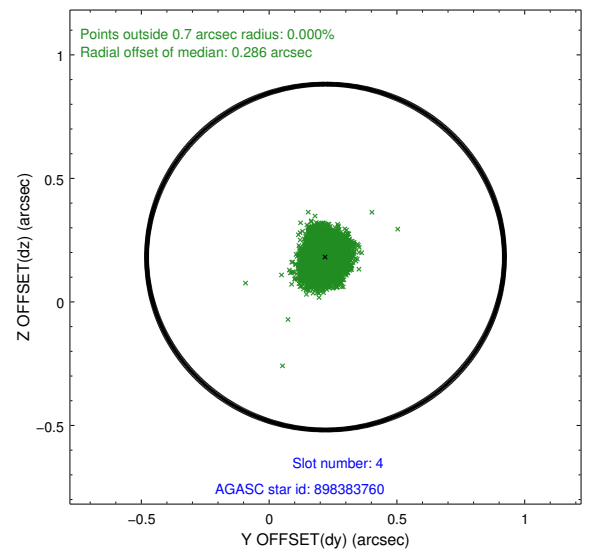
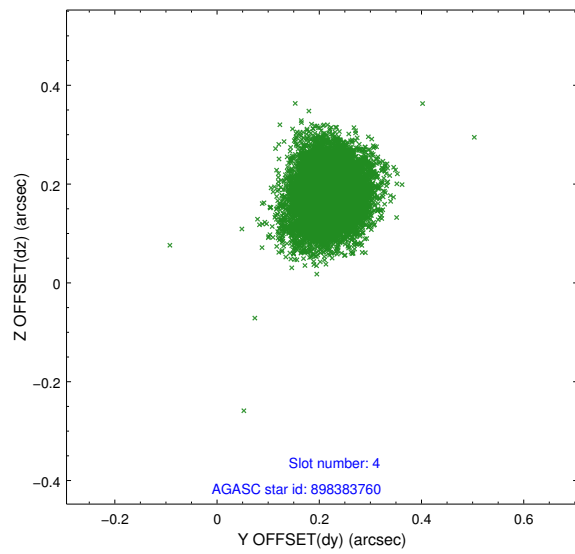
slot	status	id	mag	n_pts	med_dy	med_dz	dr1	dr2	ra	dec	mean_y	mean_z
0	FID	ACIS-I-1	7.07	4895	0.031	-0.016	0.007	0.012	0.000000	0.000000	923.80	-839.00
1	FID	ACIS-I-5	7.05	4895	-0.207	0.035	0.006	0.011	0.000000	0.000000	-1824.44	1058.44
2	FID	ACIS-I-6	7.06	4895	0.084	0.052	0.007	0.011	0.000000	0.000000	389.19	1703.18
3	GUIDE	898258992	7.98	9783	-0.355	-0.285	0.059	0.096	269.435214	-28.570389	1933.63	1097.47
4	GUIDE	898383760	8.23	9786	0.221	0.182	0.064	0.105	270.301358	-29.342458	-489.96	-1950.60
5	GUIDE	898243064	8.74	9784	0.035	-0.277	0.088	0.144	268.852106	-29.678564	-2258.67	2401.78
6	GUIDE	898398488	7.80	9787	0.052	0.138	0.060	0.095	270.116283	-29.824370	-2281.75	-1583.27
7	GUIDE	898402144	8.24	9788	0.048	0.241	0.065	0.106	270.208935	-29.851667	-2344.56	-1882.64

## 2.4 Star Slots

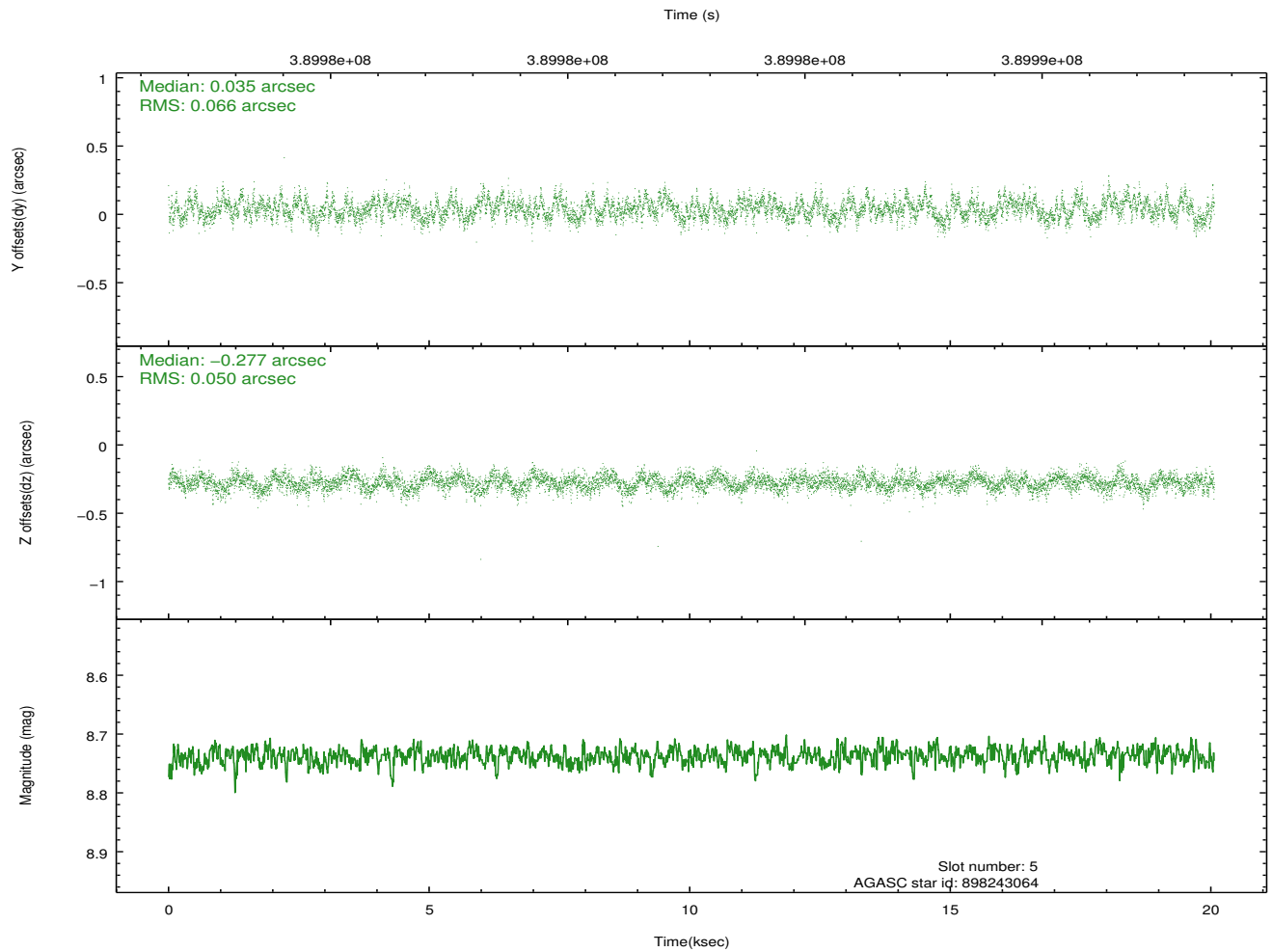
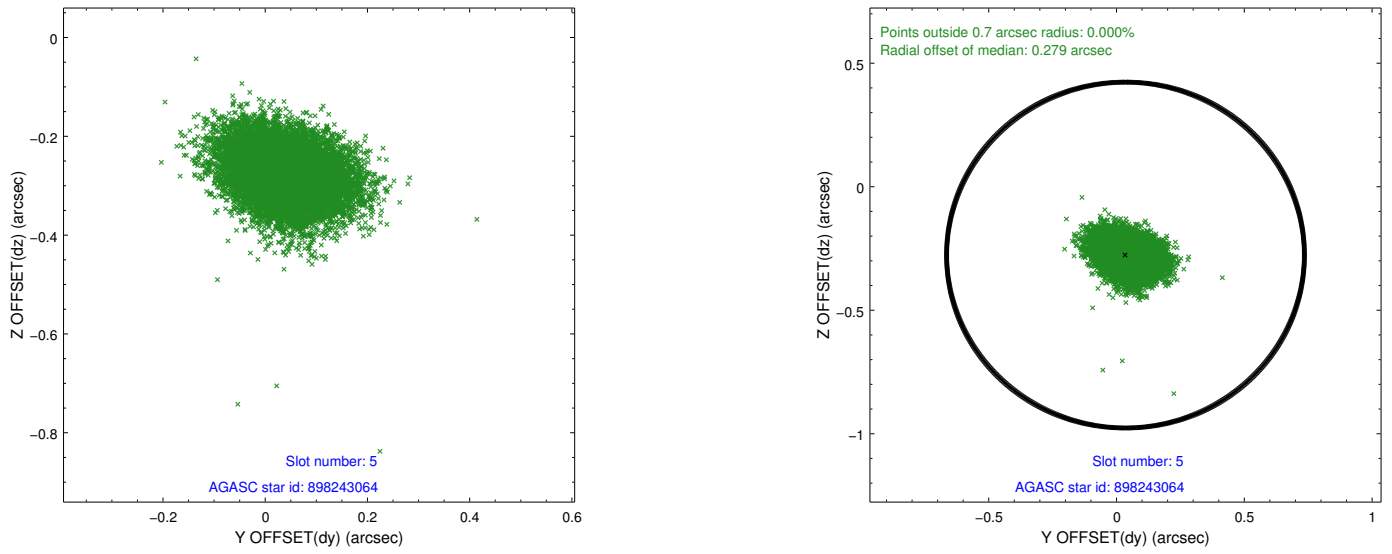
### 2.4.1 Slot 3



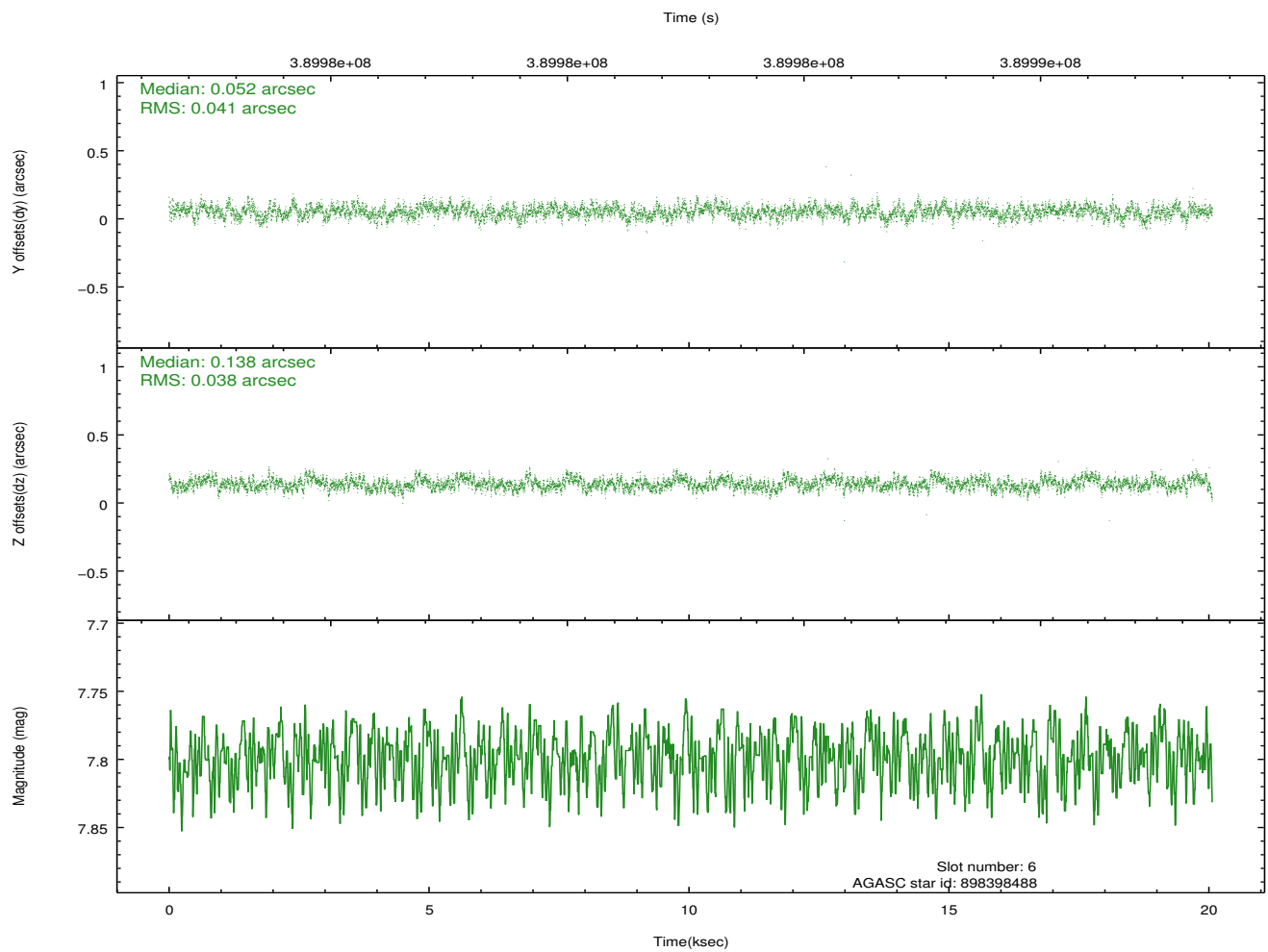
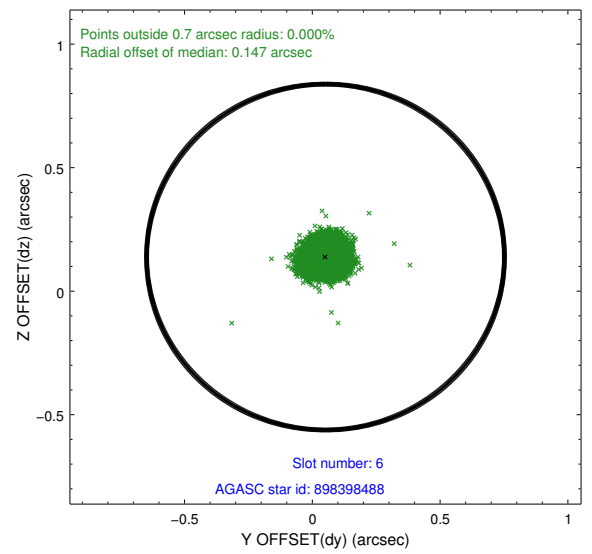
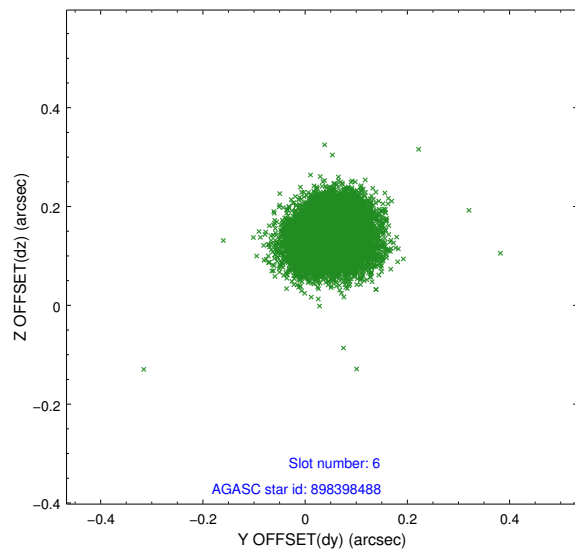
## 2.4.2 Slot 4



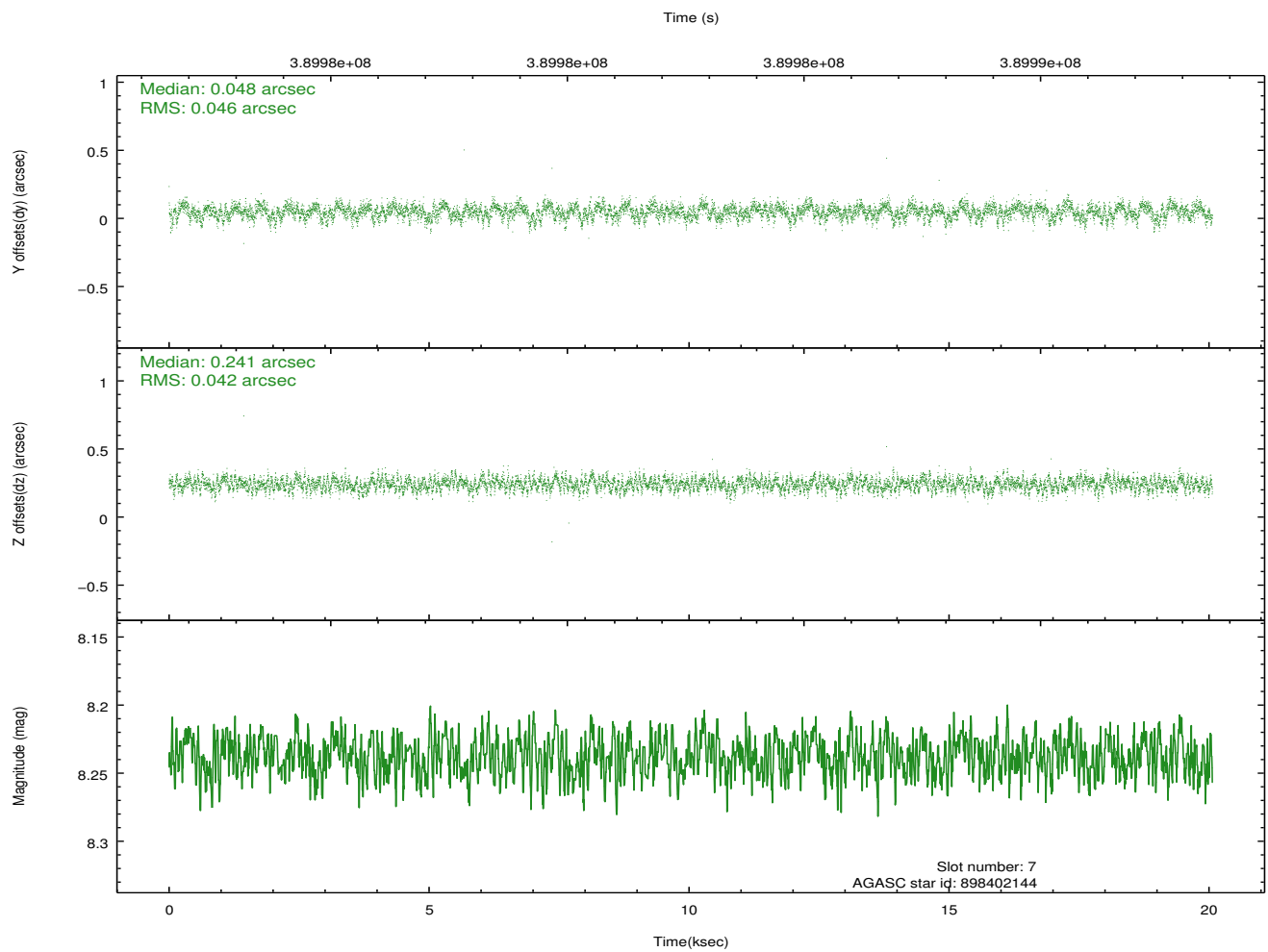
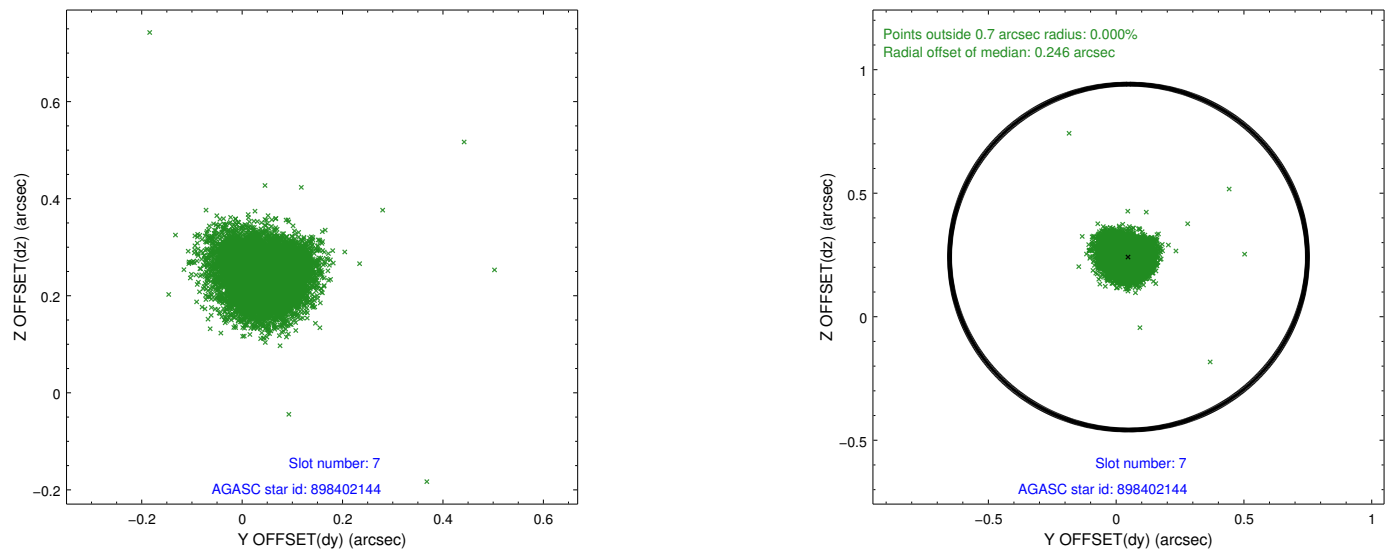
### 2.4.3 Slot 5



## 2.4.4 Slot 6

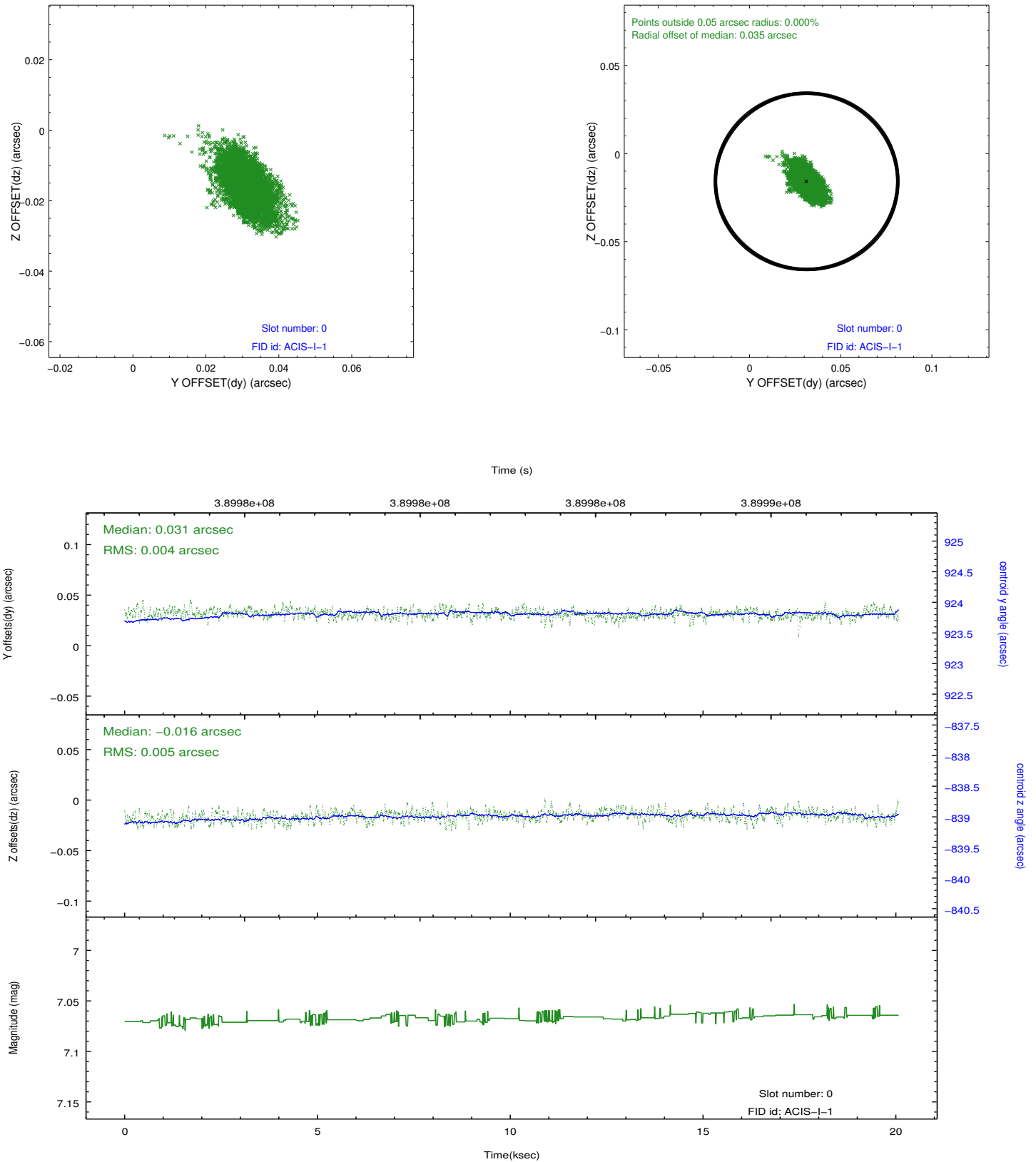


## 2.4.5 Slot 7

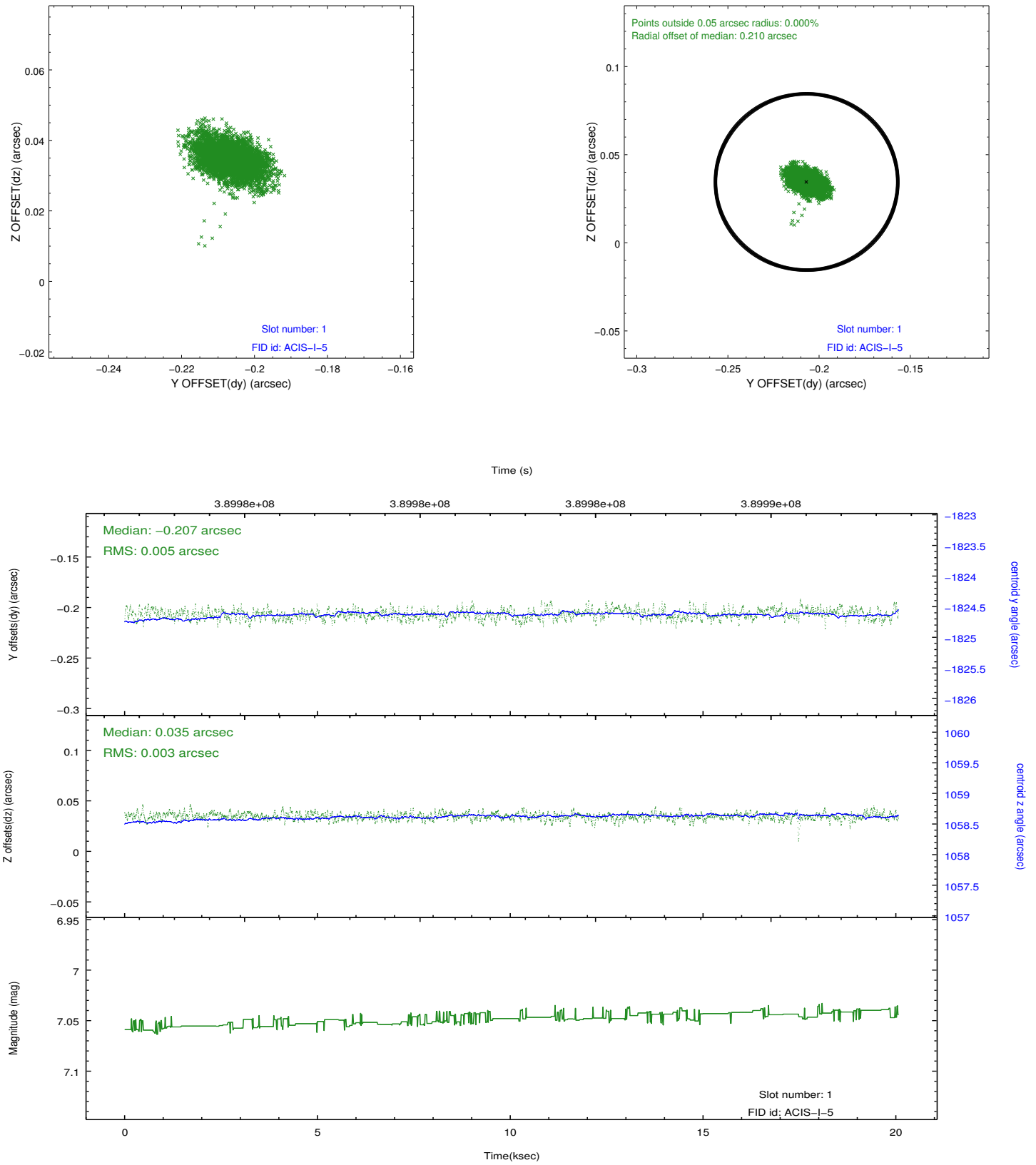


## 2.5 FID Slots

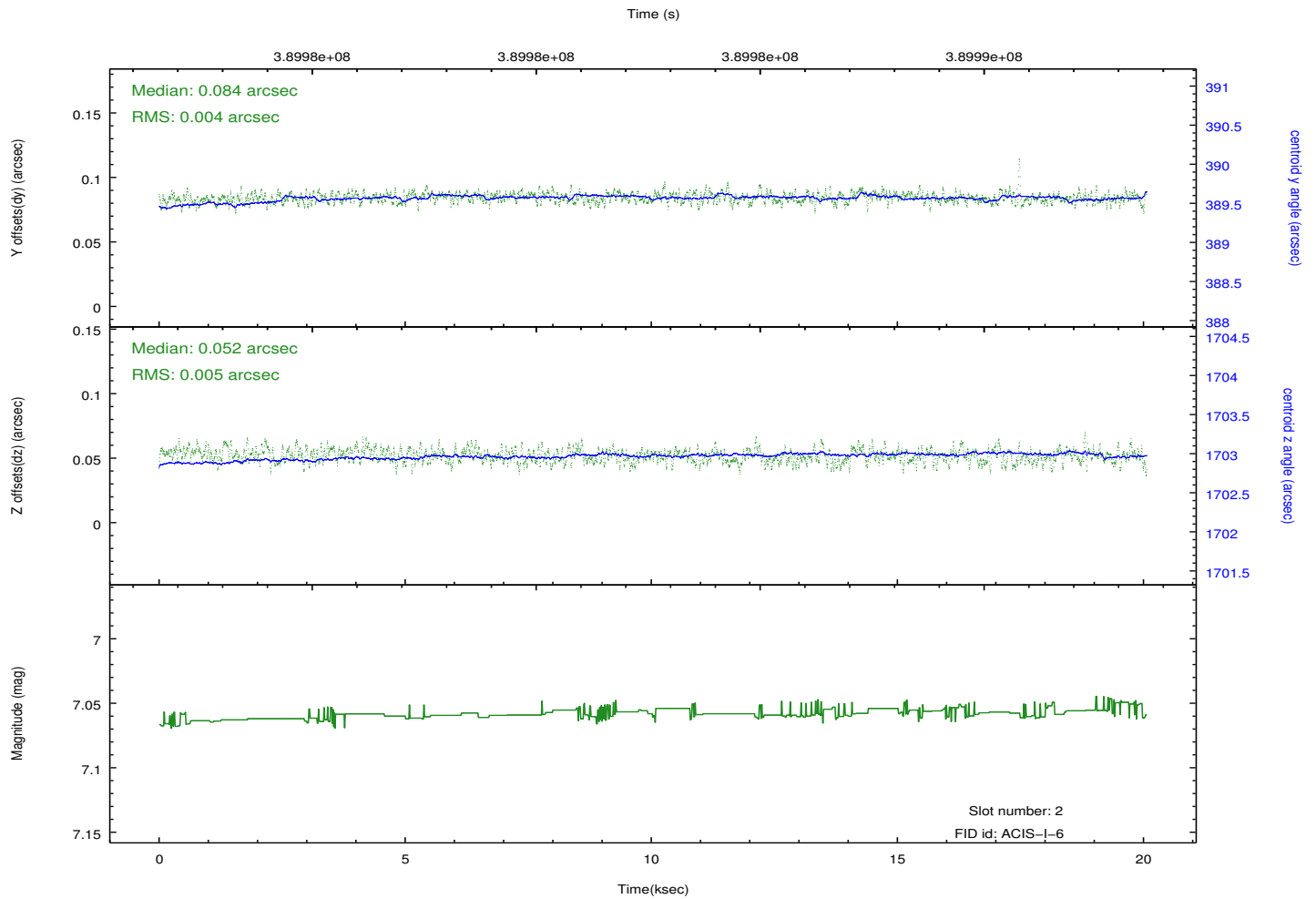
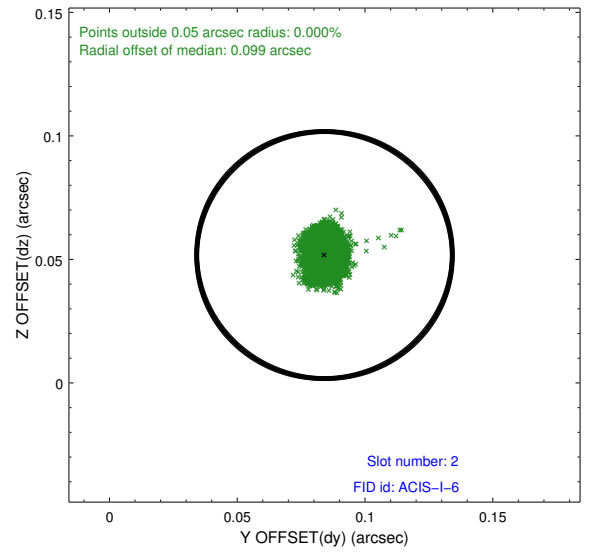
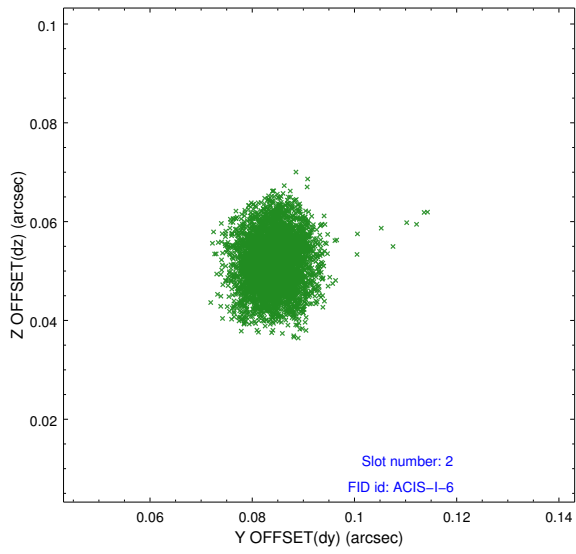
### 2.5.1 Slot 0



## 2.5.2 Slot 1



### 2.5.3 Slot 2



# A Summary

## A.1 Status

V&V Scientist	Jen Lauer
V&V Date (YYYY-MM-DD)	2012.07.02
V&V Edition	1
V&V Disposition and Status	OK
V&V Charge Time	20.063200154305

## A.2 Comments

Joint proposal with HST.

===

Photometry requested but not used. Target too faint for tracking.