

V&V Reference Report

L2 ASCDS Version : 8.4.5

Observation 11534 - L2 Version 2
Chandra X-Ray Center

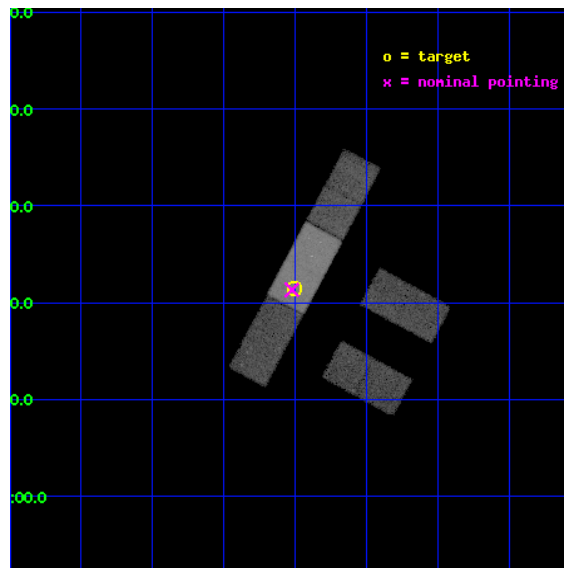
L2 Processing Date : Jun 19 2012

Contents

1	Front	2
2	OBI	3
2.1	OBI	3
2.1.1	Images	3
2.1.2	Bias	3
2.1.3	Parameters	4
2.1.4	Events	4
2.2	Compared Parameters	5
2.3	Aspect	6
2.4	Star Slots	9
2.4.1	Slot 3	9
2.4.2	Slot 4	10
2.4.3	Slot 5	11
2.4.4	Slot 6	12
2.4.5	Slot 7	13
2.5	FID Slots	14
2.5.1	Slot 0	14
2.5.2	Slot 1	15
2.5.3	Slot 2	16
A	Summary	17
A.1	Status	17
A.2	Comments	17

1 Front

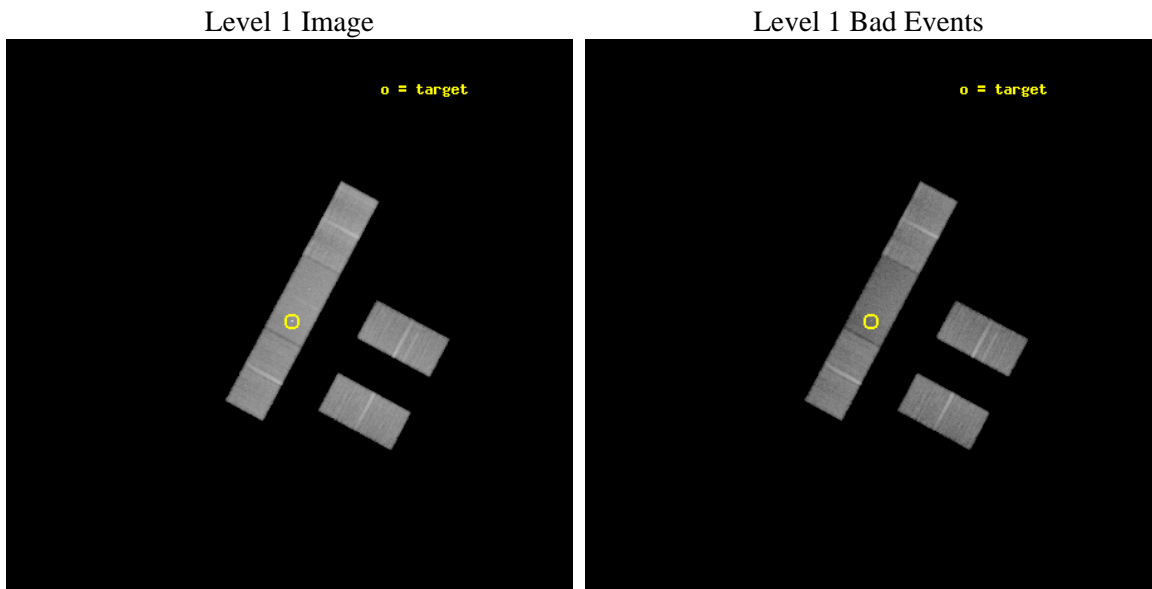
seq_num	702120	Sequence number
obs_id	11534	Observation id
title	The Size of Quasar Non-Thermal/X-ray Emission Regions	Proposal tit
observer	Prof. Christopher Kochanek	Principal investigator
object	Q2237+0305	Source name
dtcycle	0	
cycle	P	events from which exps? Prim/Second/Both
ra_targ	340.12625	Observer's specified target RA [deg]
dec_targ	3.358	Observer's specified target Dec [deg]
ra_nom	340.13044223852	Nominal RA [deg]
dec_nom	3.3555669773808	Nominal Dec [deg]
roll_nom	298.16495999566	Nominal Roll [deg]
revision	2	Processing version of data
ontime	29141.399795711	Sum of GTIs [s]
livetime	28454.475286443	Livetime [s]
ontime2	29141.399795711	Sum of GTIs [s]
ontime3	29141.399795711	Sum of GTIs [s]
ontime6	29141.399795711	Sum of GTIs [s]
ontime7	29141.399795711	Sum of GTIs [s]
ontime8	29139.658785582	Sum of GTIs [s]
l2events	126500	Number of level 2 events



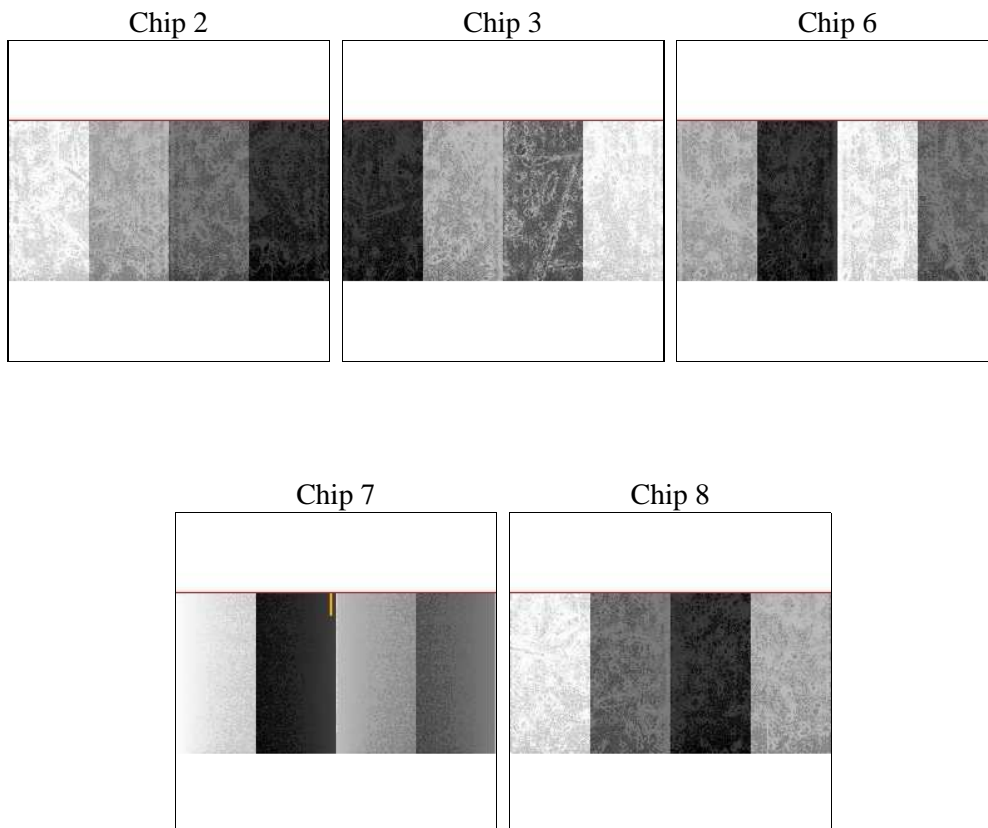
2 OBI

2.1 OBI

2.1.1 Images



2.1.2 Bias



2.1.3 Parameters

obi_num	0	Obi number	sched_exp_time	29000.000000	[s] Scheduled observation exposure time
ascdsver	8.4.5	Processing system revision	ontime	29141.399795711	Sum of GTIs [s]
caldbver	4.4.10	 	ontime2	29141.399795711	Sum of GTIs [s]
date	2012-06-19T07:40:50	Date and time of file creation	ontime3	29141.399795711	Sum of GTIs [s]
revision	2	Processing version of data	ontime6	29141.399795711	Sum of GTIs [s]
			ontime7	29141.399795711	Sum of GTIs [s]
			ontime8	29139.658785582	Sum of GTIs [s]
			l1events	782821	Number of level 1 events

2.1.4 Events

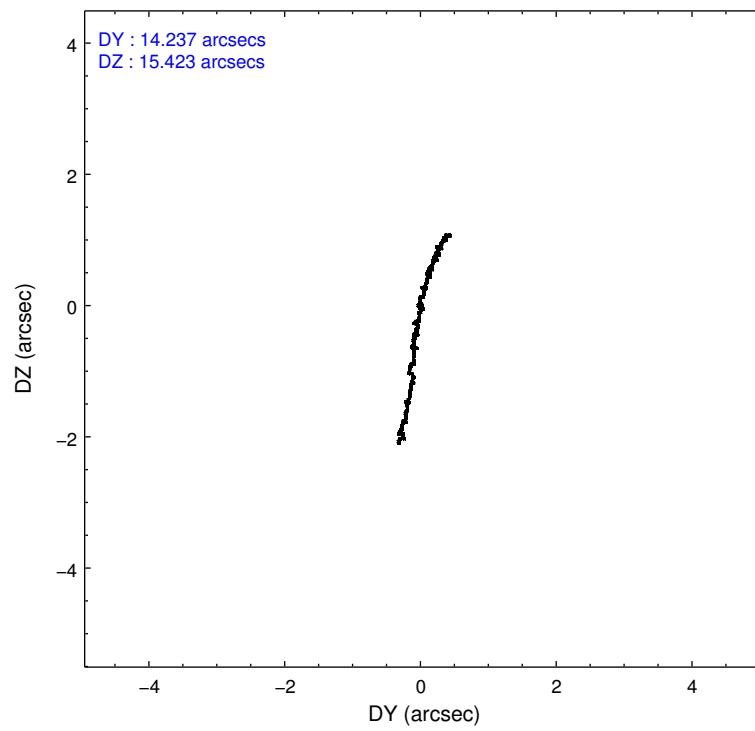
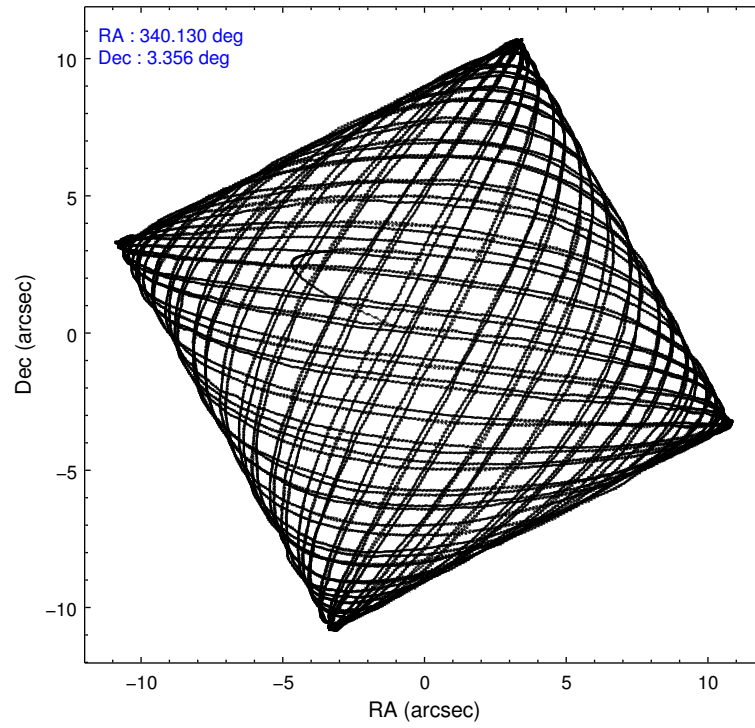
	ccd 2	ccd 3	ccd 6	ccd 7	ccd 8
level 1 events	141714	141536	147298	162688	189585
rejected events	127352	127696	132053	85664	144002
rejected %	89%	90%	89%	52%	75%

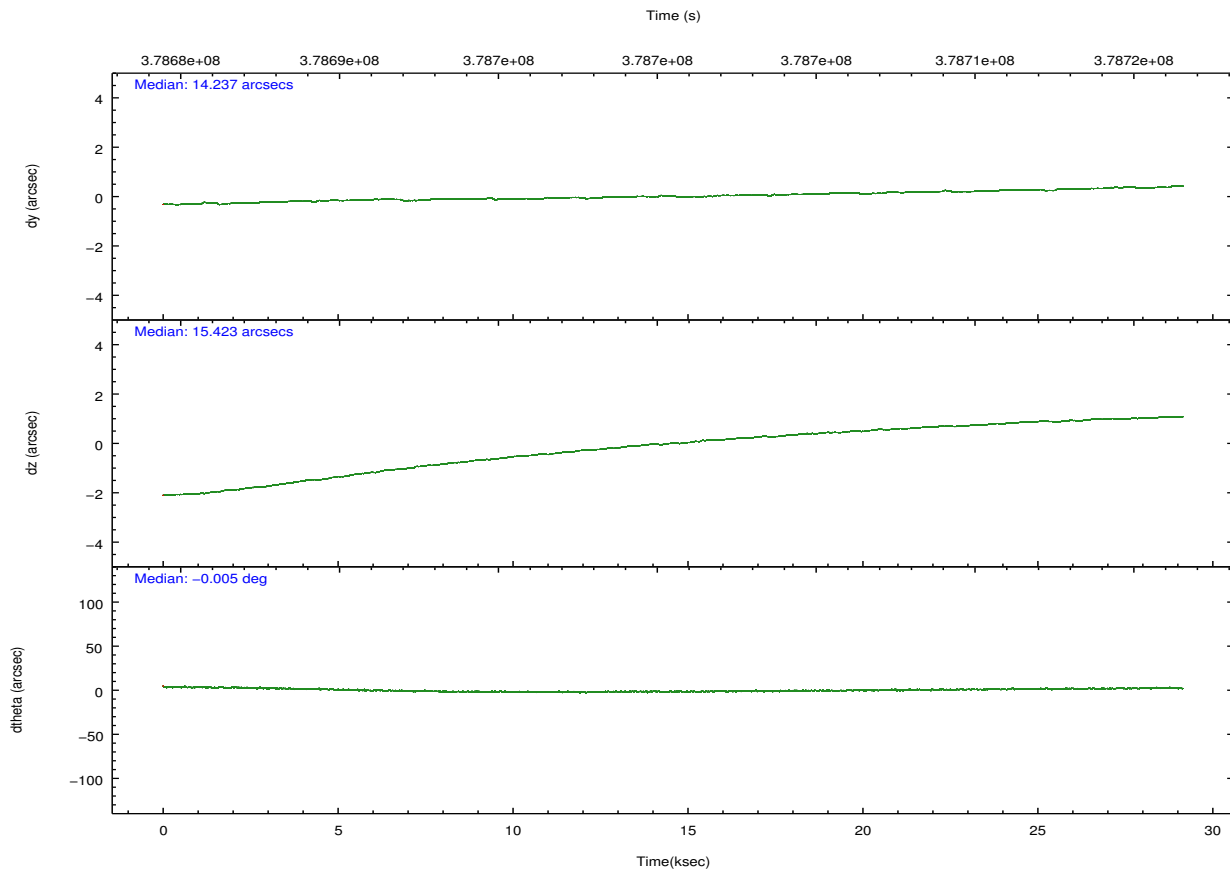
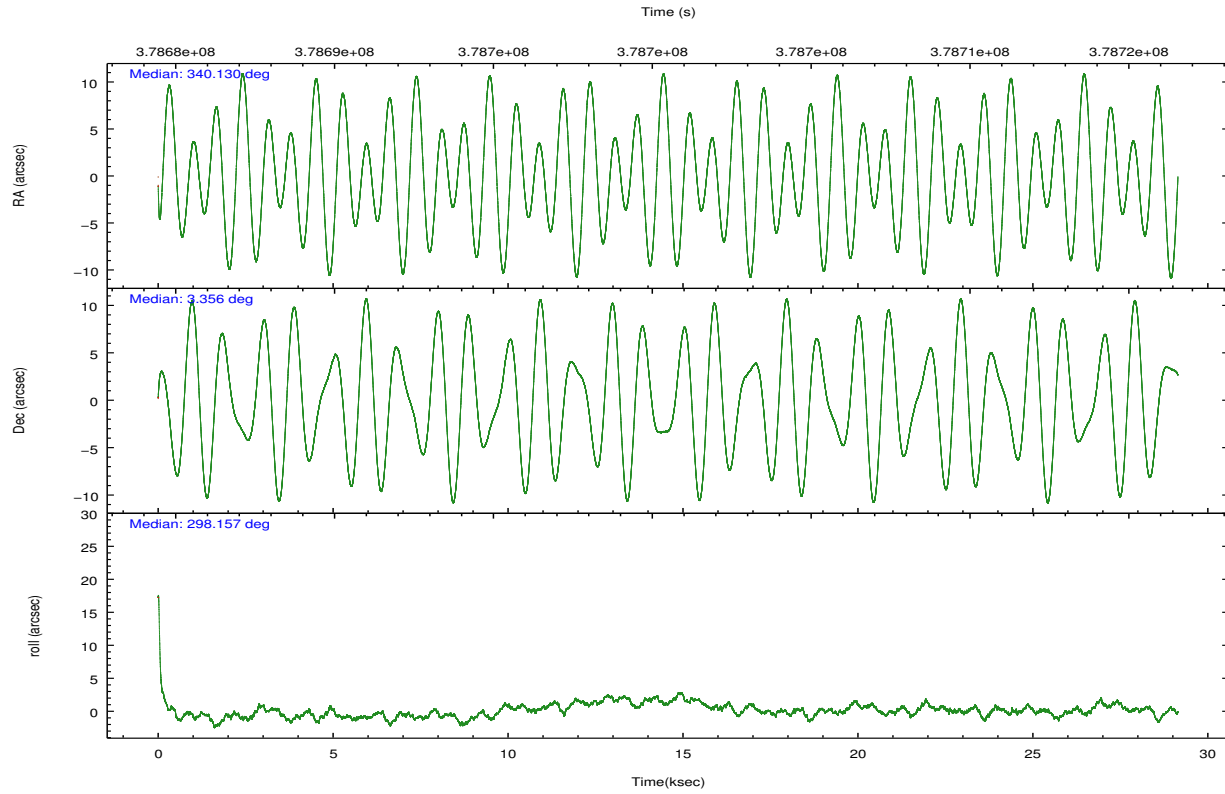
	ccd 2	ccd 3	ccd 6	ccd 7	ccd 8
grade 0 events	4870	4653	5198	8470	13432
	3%	3%	3%	5%	7%
grade 1 events	51	54	51	249	147
	0%	0%	0%	0%	0%
grade 2 events	3400	2947	3332	16824	10798
	2%	2%	2%	10%	5%
grade 3 events	1758	1906	1860	8002	4975
	1%	1%	1%	4%	2%
grade 4 events	1945	1917	2048	7791	4498
	1%	1%	1%	4%	2%
grade 5 events	4715	5668	5744	16655	8209
	3%	4%	3%	10%	4%
grade 6 events	2723	2771	3160	37697	13061
	1%	1%	2%	23%	6%
grade 7 events	122252	121620	125905	67000	134465
	86%	85%	85%	41%	70%

2.2 Compared Parameters

Parameter	Planned	Actual	Parameter	Planned	Actual
Instrument	ACIS	ACIS	Obspar format version number	7	7
Detector	ACIS-23678	ACIS-23678	Obspar file type	PREDICTED	ACTUAL
Grating	NONE	NONE	Obspar update status	NONE	UPDATED
Data mode	VFAINT	VFAINT	CCD I0 on	N	N
Observation mode	POINTING	POINTING	CCD I1 on	N	N
[deg] Pointing RA	340.106983	340.1304422385171	CCD I2 on	O4	Y
[deg] Pointing Dec	3.369674	3.355566977380779	CCD I3 on	O3	Y
[deg] Pointing Roll	298.009710	298.1649599956604	CCD S0 on	N	N
[mm] SIM focus pos	-0.684267	-0.6828225247311905	CCD S1 on	N	N
[mm] SIM defocus	0	0.001444936568705701	CCD S2 on	O1	Y
[mm] SIM translation stage pos	-190.132523	-190.1400660498719	CCD S3 on	Y	Y
[mm] SIM translation stage offset	0	0.00754346686406393	CCD S4 on	O2	Y
[s] Observation start time (MET)	378686066.184000	378684917.99888	CCD S5 on	N	N
Observation start date	2009-12-31T22:33:20	2009-12-31T22:15:17	Number of optional ACIS chips dropped	0	0
[s] Observation end time (MET)	378715066.184000	378716266.08797	On-chip summing requested	N	N
Observation end date	2010-01-01T06:36:40	2010-01-01T06:57:46	Subarray requested	CUSTOM	1/2
Read mode	TIMED	TIMED	Subarray start row	257	257
			Subarray row count	512	512
			Alternating exposures requested	N	N
			[s] Primary exposure time	0.000000	1.7

2.3 Aspect



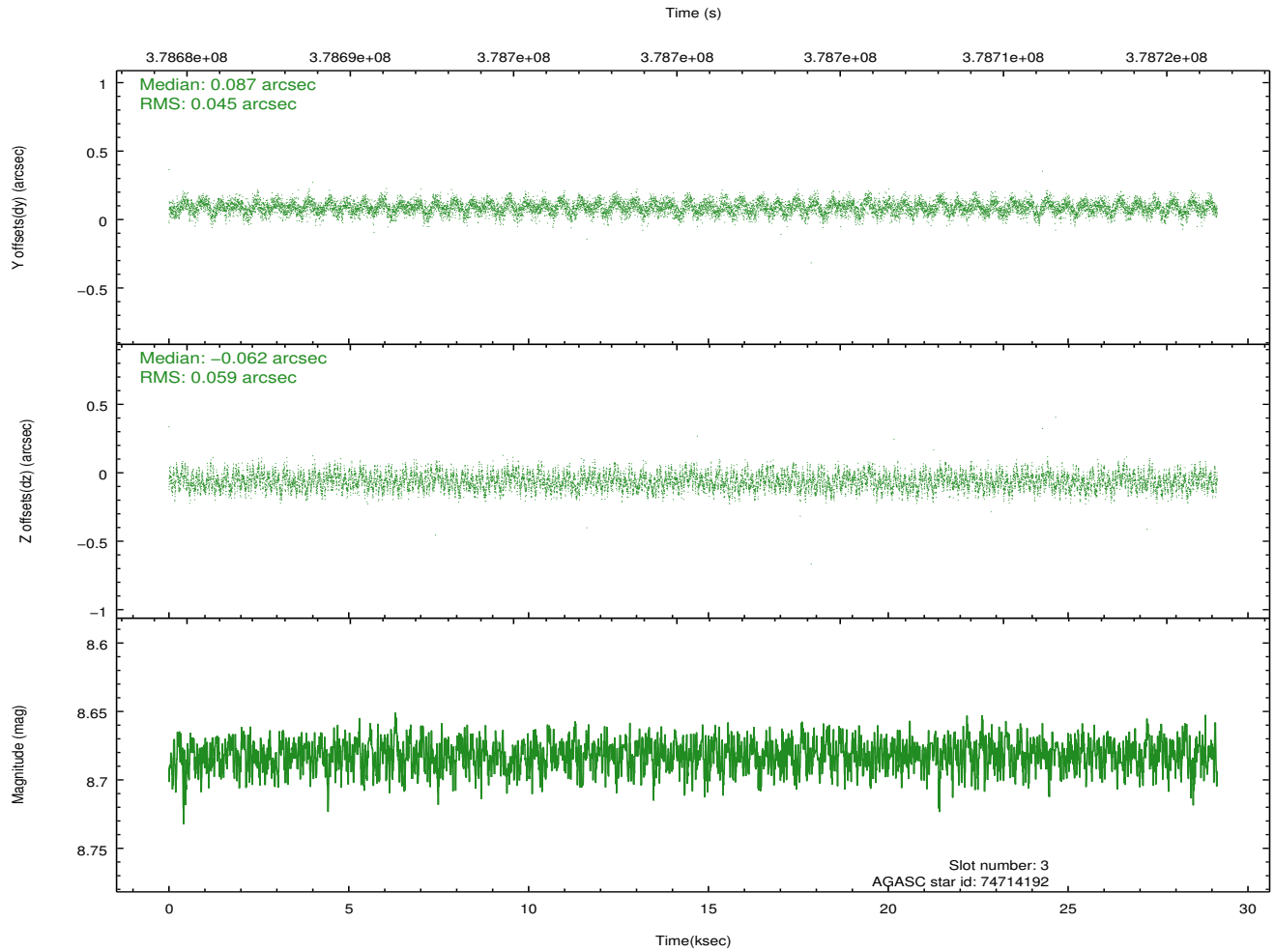
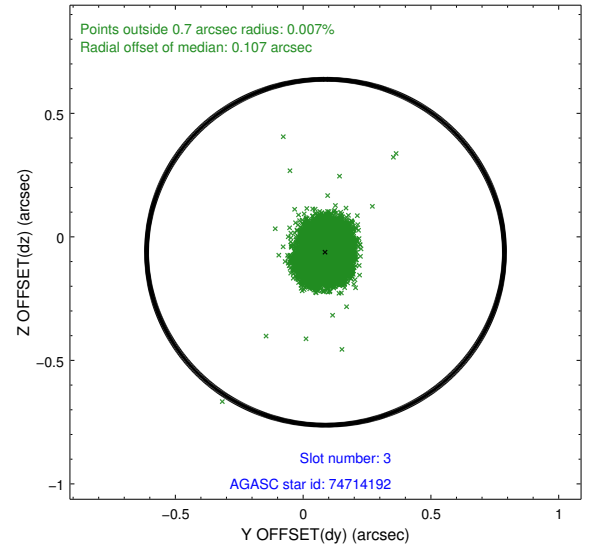
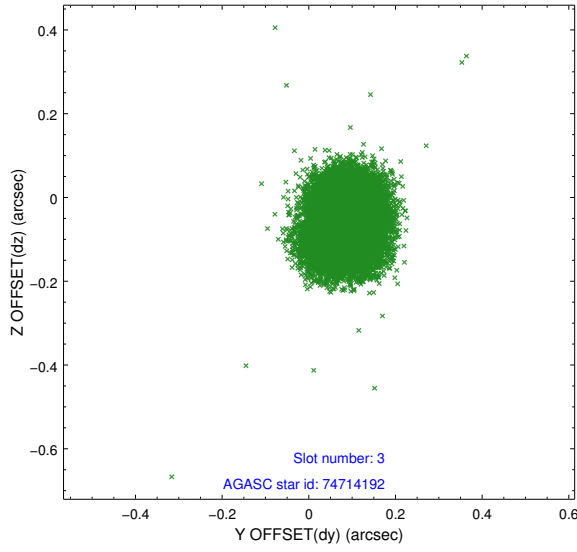


Slot Statistics

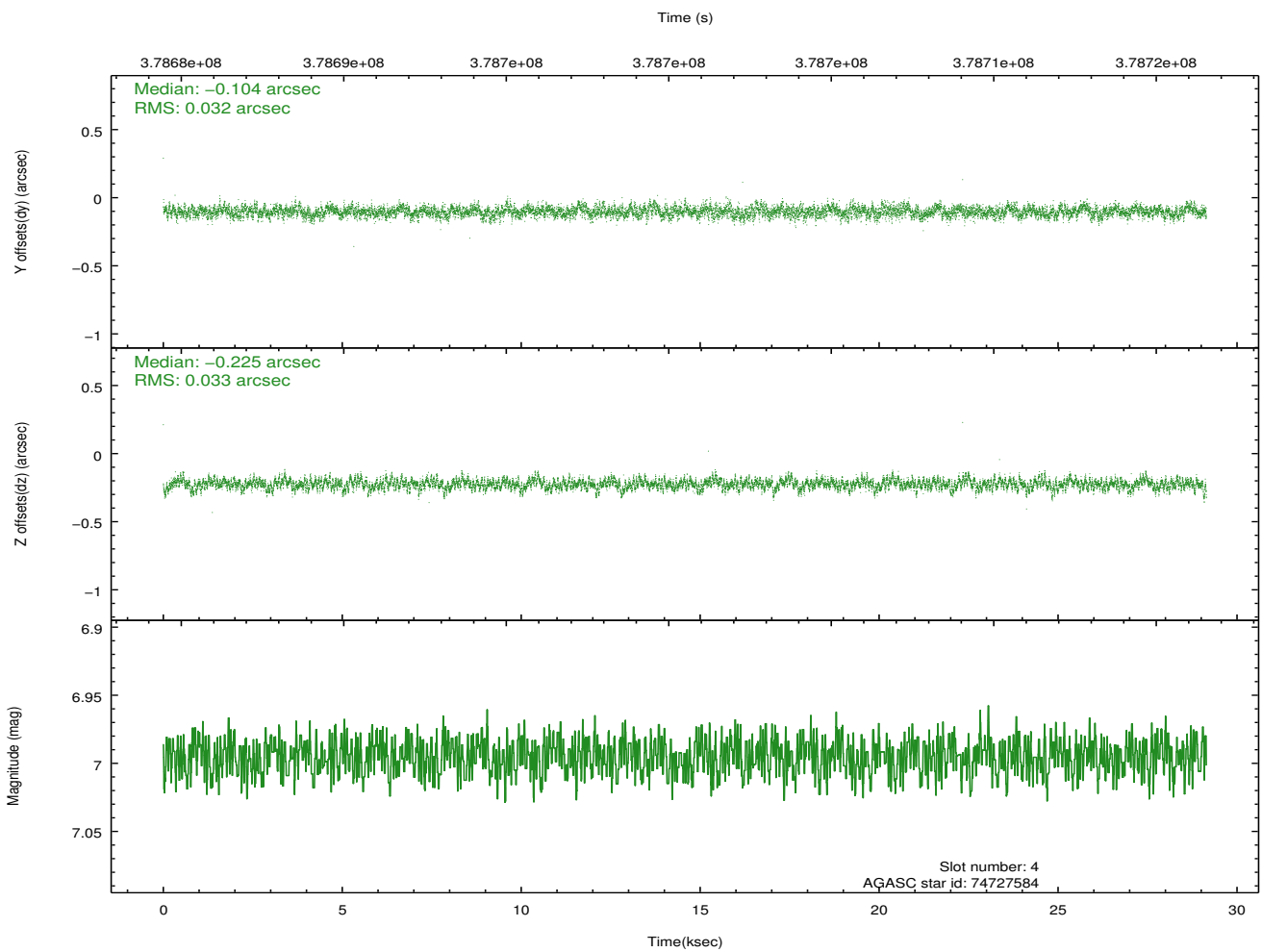
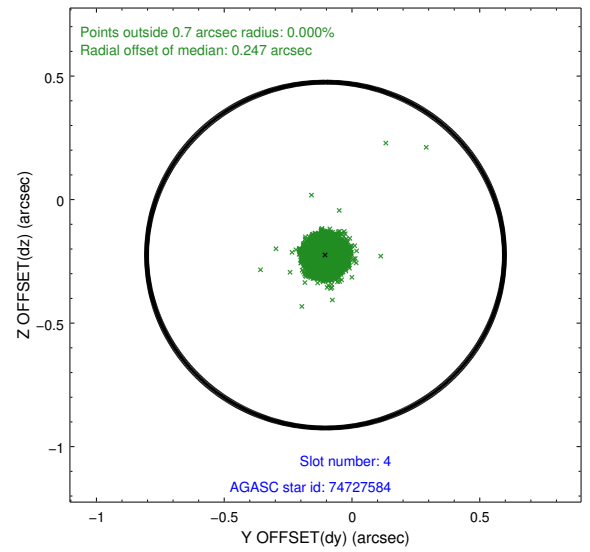
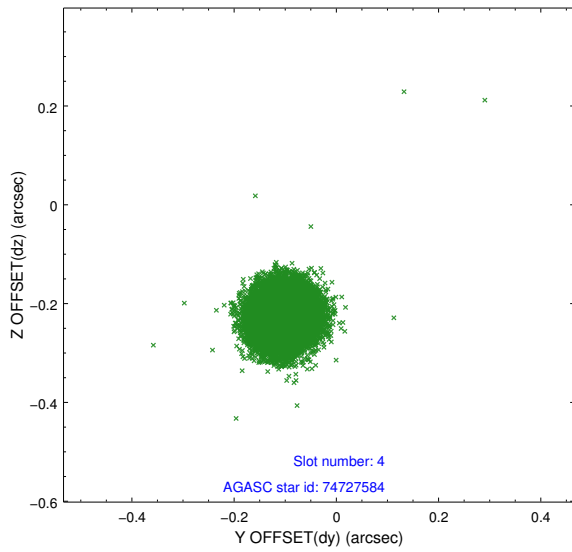
slot	status	id	mag	n_pts	med_dy	med_dz	dr1	dr2	ra	dec	mean_y	mean_z
0	FID	ACIS-S-1	6.96	7109	0.034	-0.041	0.038	0.046	0.000000	0.000000	928.85	-1732.28
1	FID	ACIS-S-4	6.98	7109	0.151	0.021	0.023	0.039	0.000000	0.000000	2146.41	171.85
2	FID	ACIS-S-5	7.00	7109	-0.211	0.035	0.015	0.023	0.000000	0.000000	-1820.17	165.55
3	GUIDE	74714192	8.68	14202	0.087	-0.062	0.079	0.125	339.623837	3.342441	-728.66	-1578.68
4	GUIDE	74727584	7.00	14218	-0.104	-0.225	0.049	0.079	339.633744	3.463732	-1097.61	-1342.34
5	GUIDE	74842128	8.54	14211	0.024	-0.028	0.064	0.103	340.118134	3.132788	772.07	-365.09
6	GUIDE	74854992	8.29	14212	-0.088	-0.023	0.073	0.116	340.342808	3.603730	-345.88	1143.72
7	GUIDE	74855640	8.85	14199	0.082	0.341	0.075	0.122	340.341123	3.746937	-804.00	1381.08

2.4 Star Slots

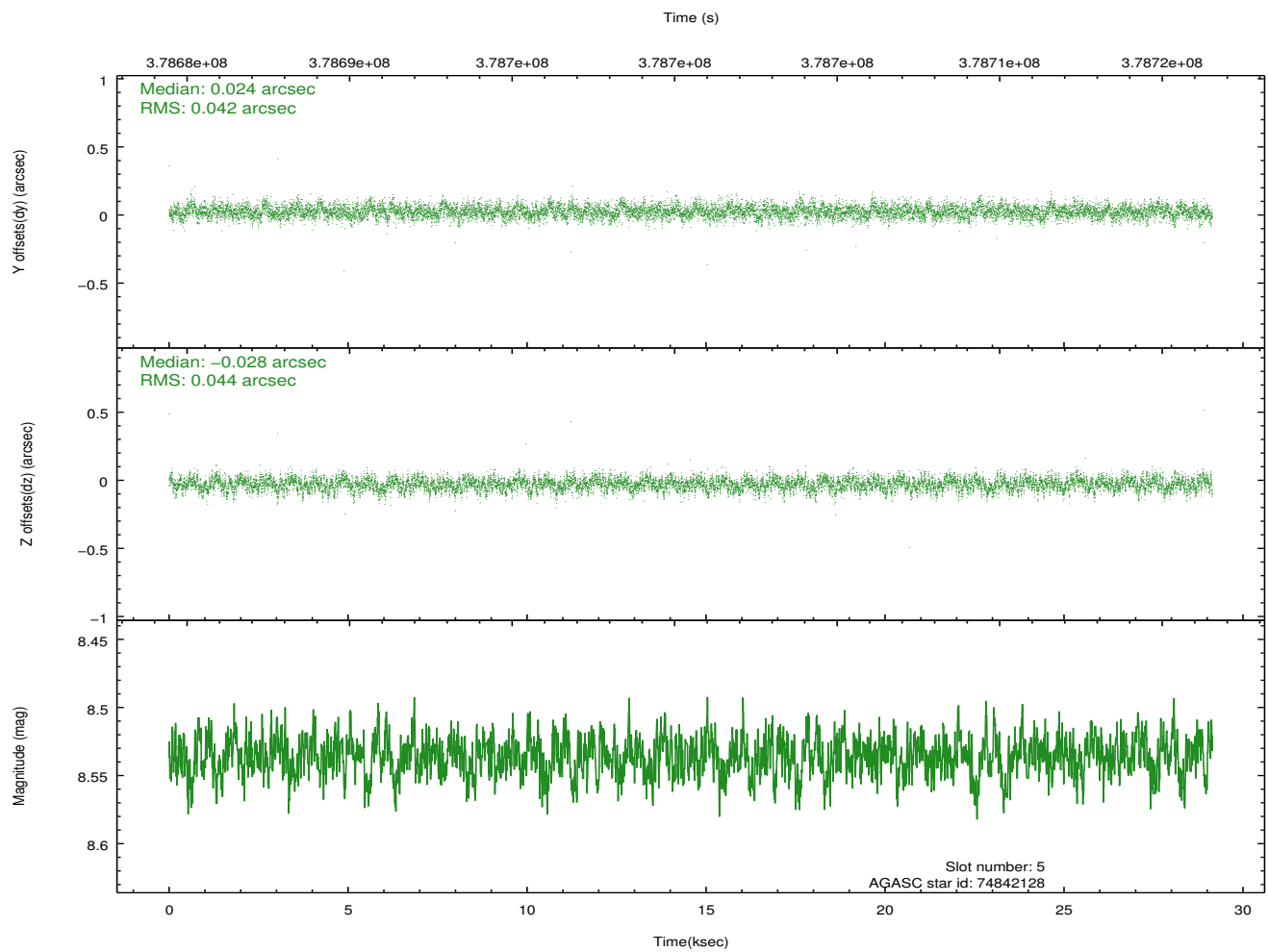
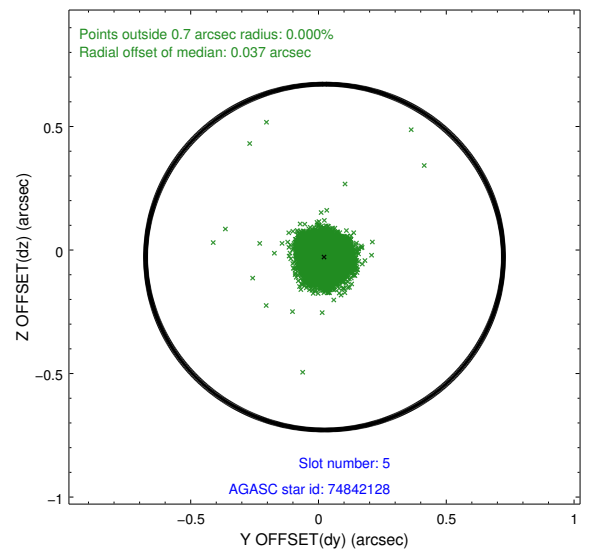
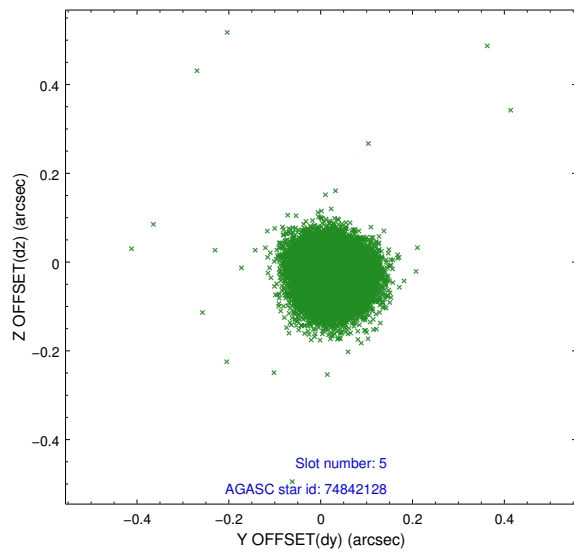
2.4.1 Slot 3



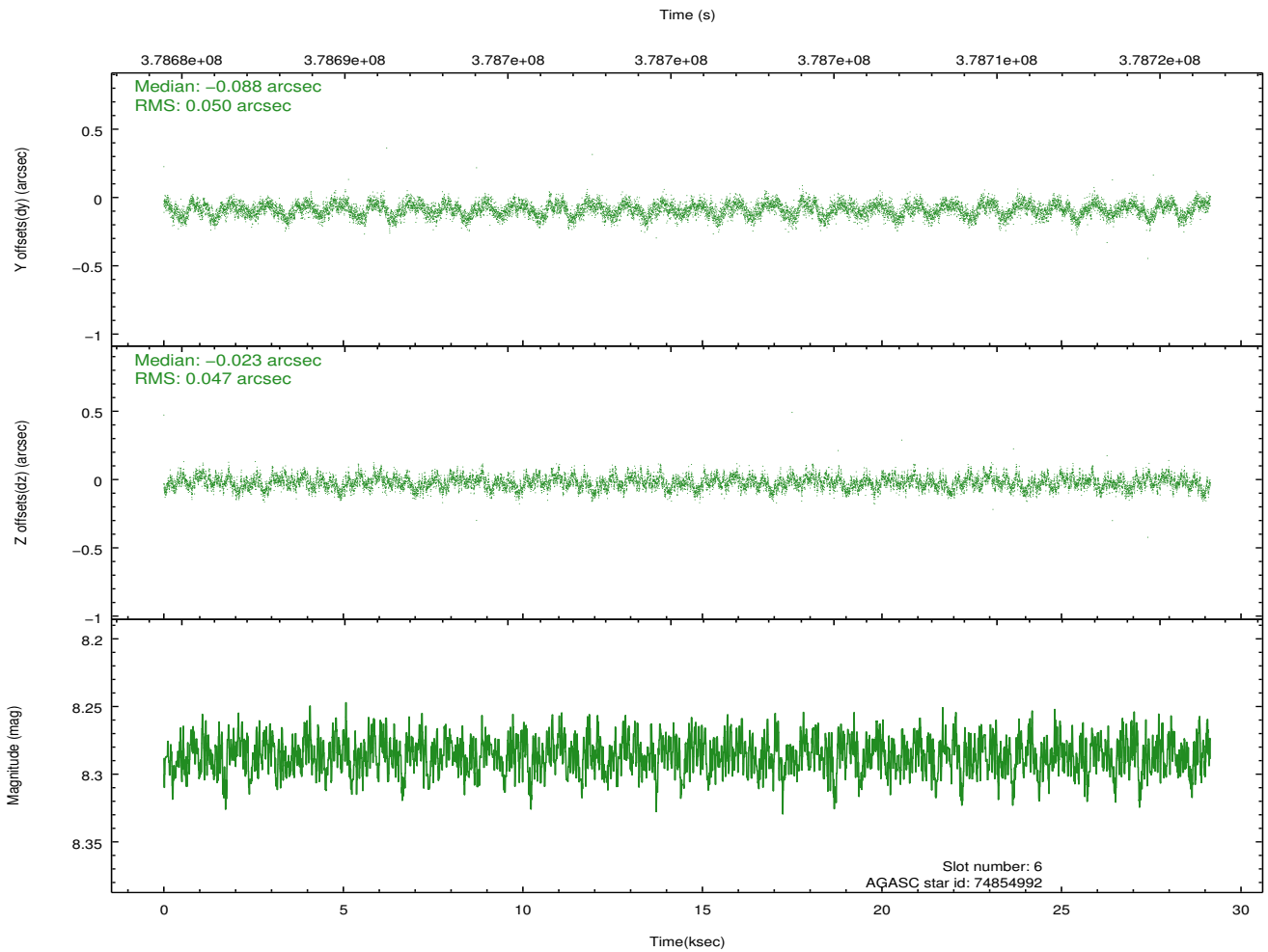
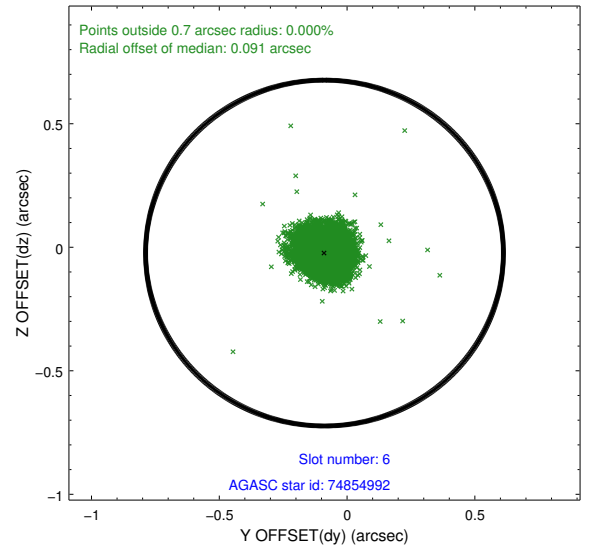
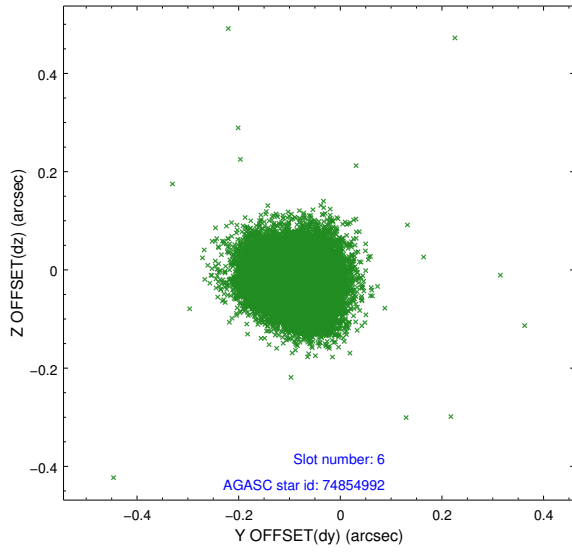
2.4.2 Slot 4



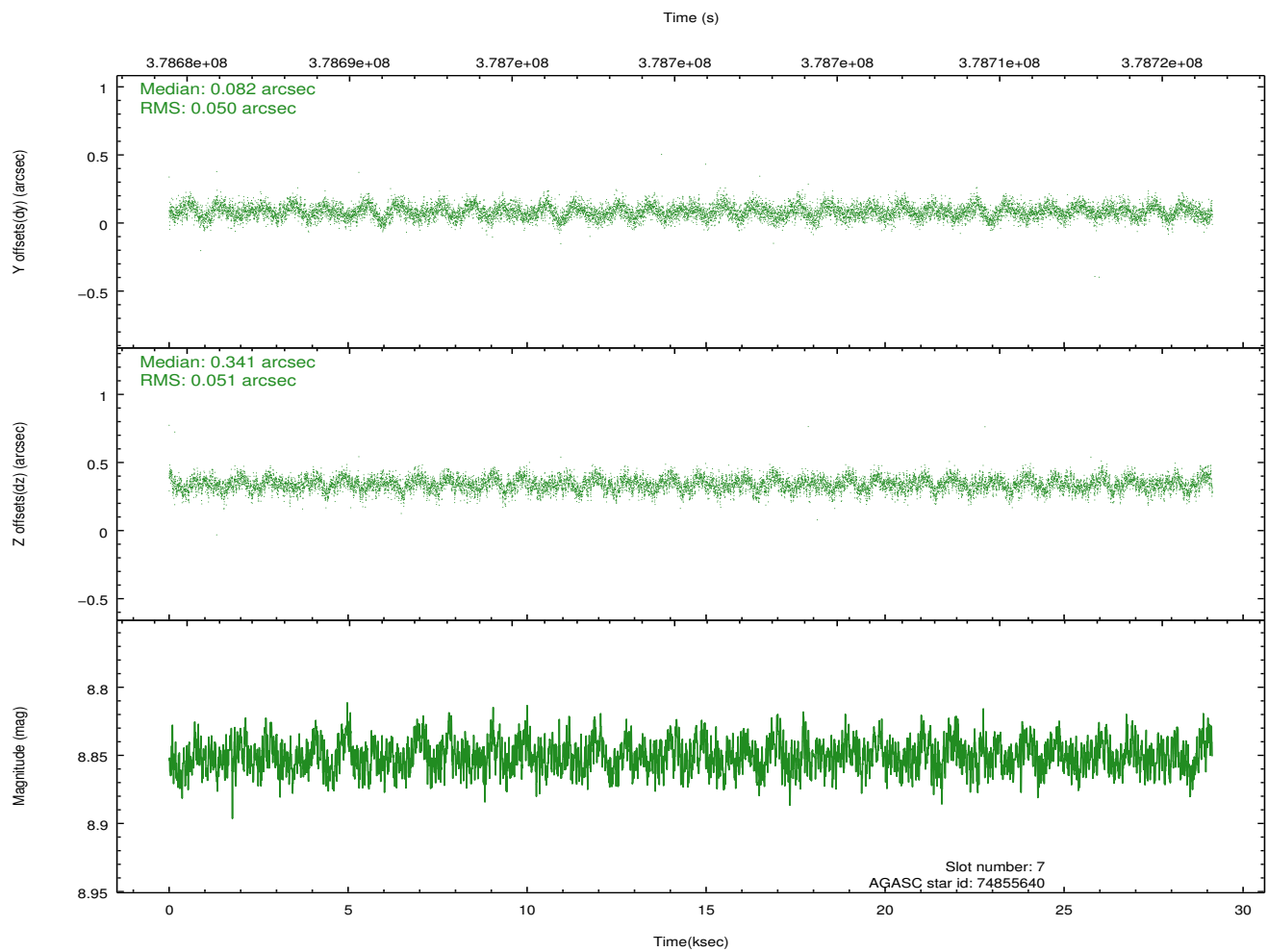
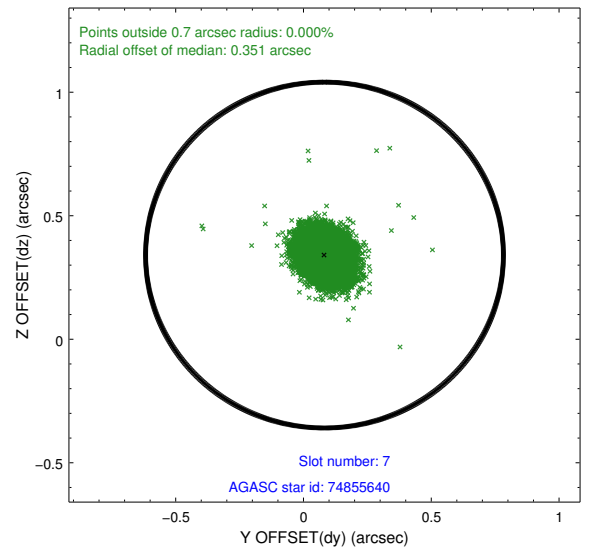
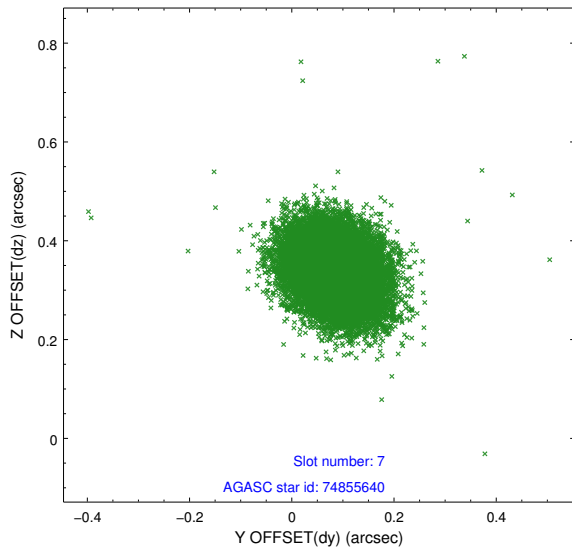
2.4.3 Slot 5



2.4.4 Slot 6

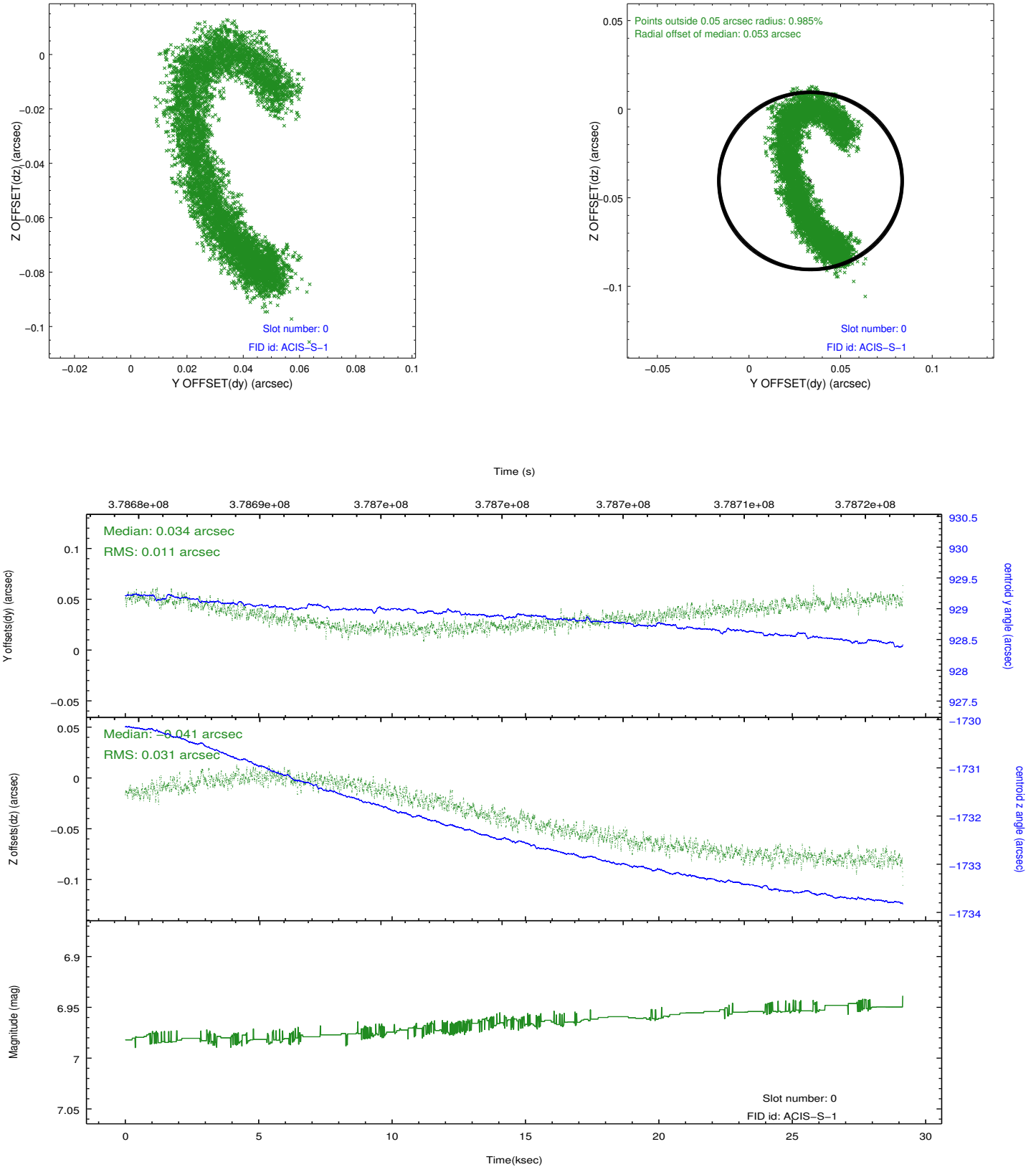


2.4.5 Slot 7

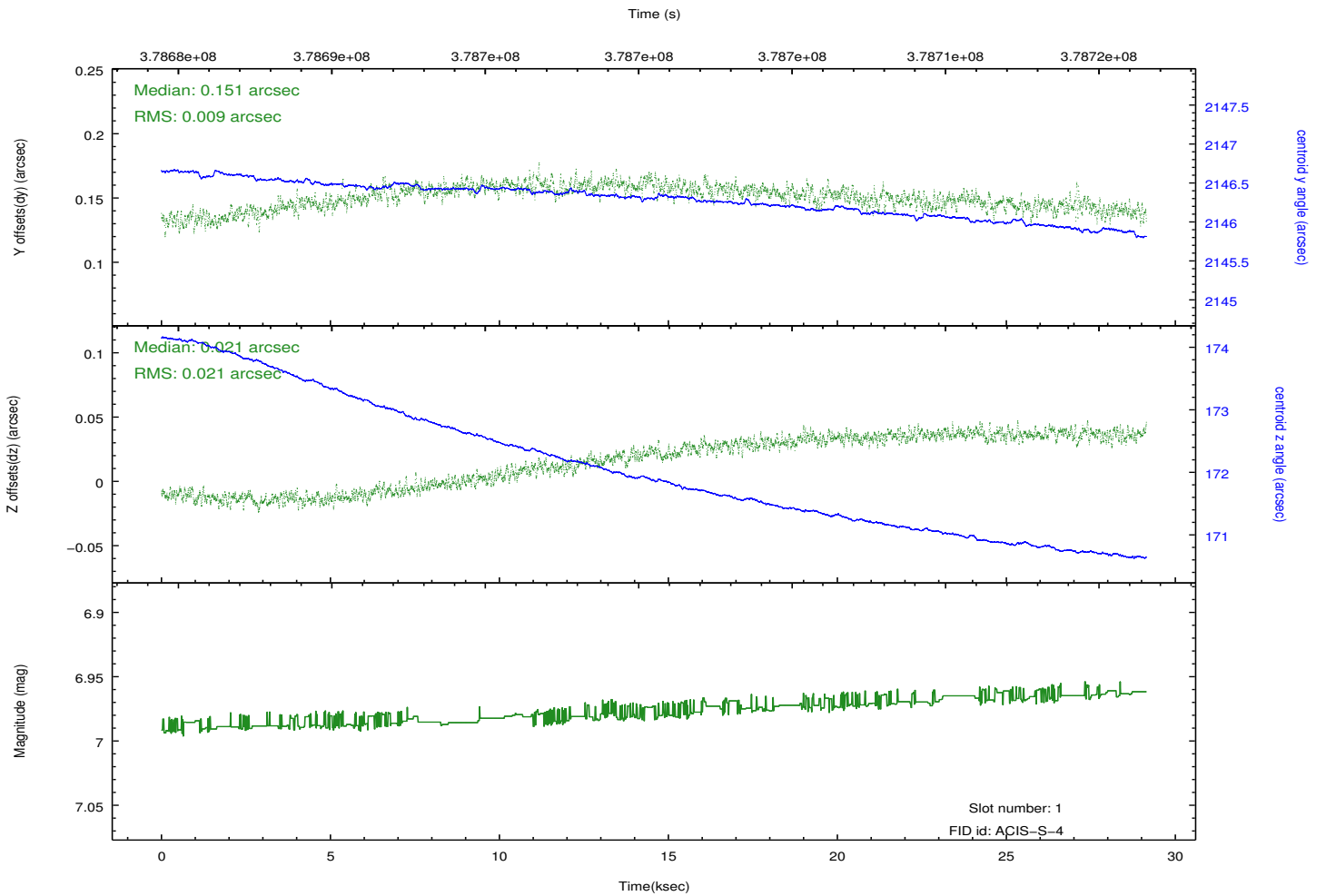
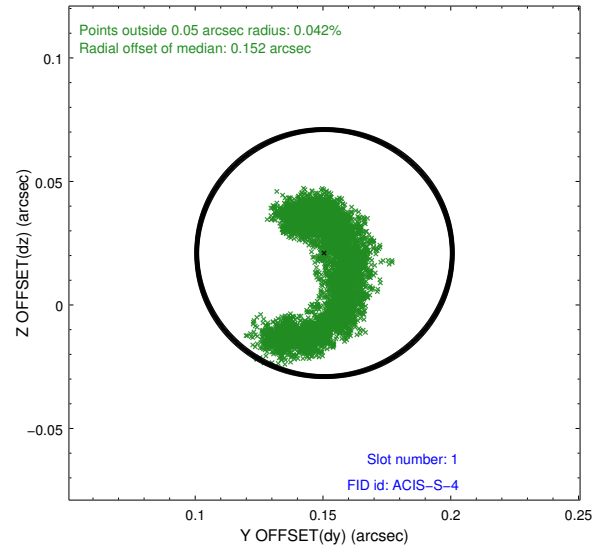
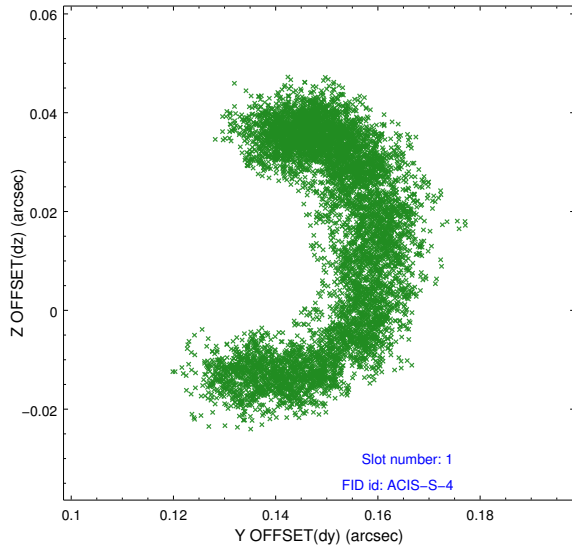


2.5 FID Slots

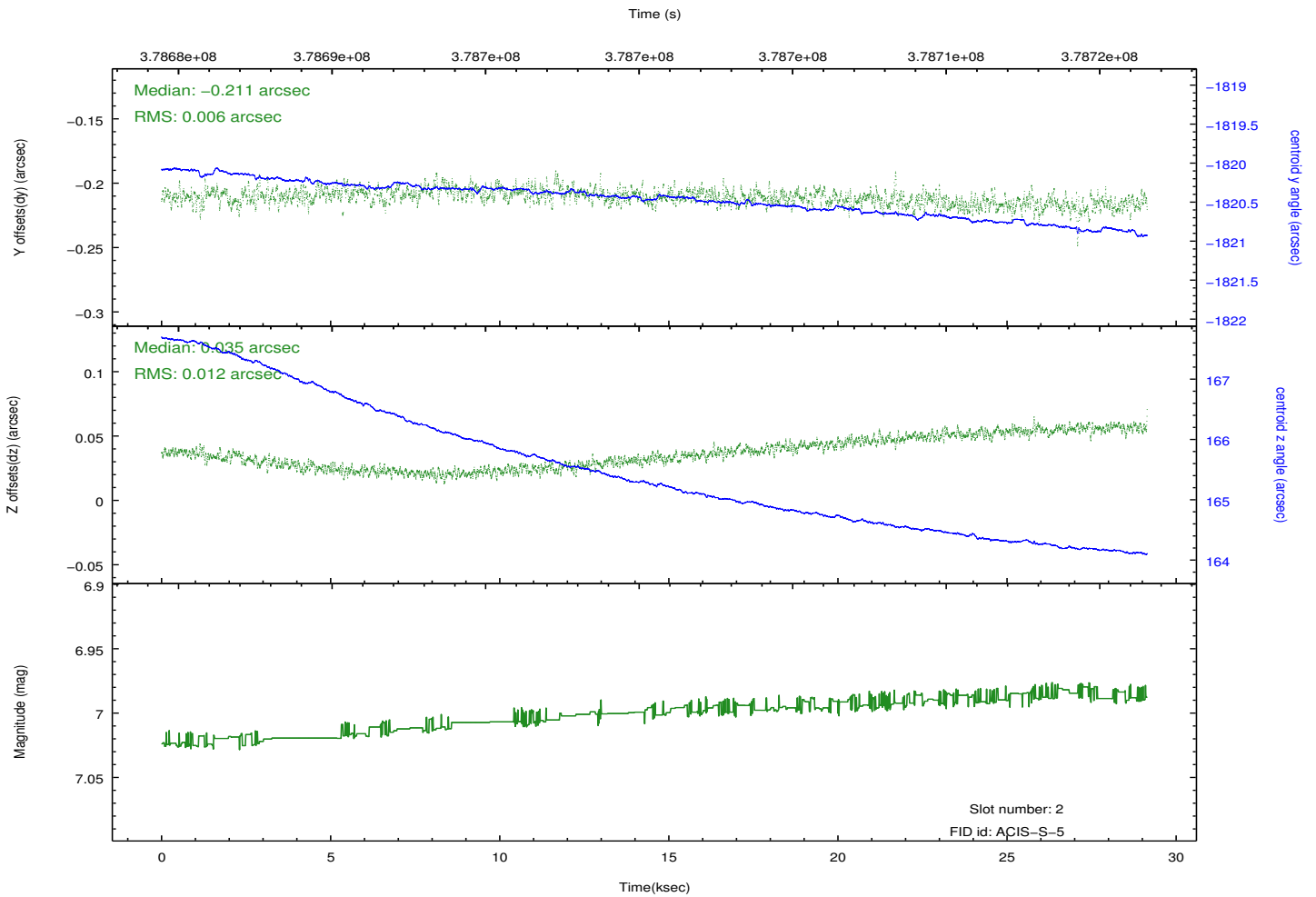
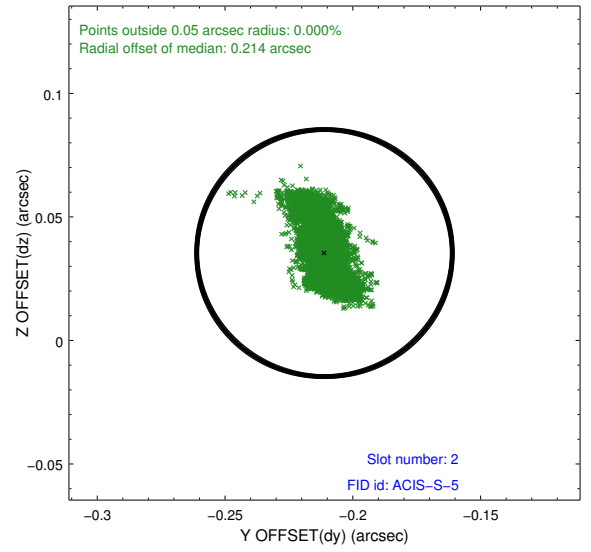
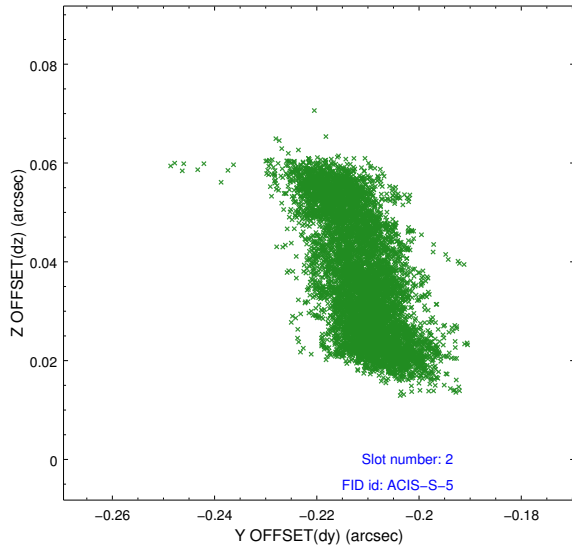
2.5.1 Slot 0



2.5.2 Slot 1



2.5.3 Slot 2



A Summary

A.1 Status

V&V Scientist	Jen Lauer
V&V Date (YYYY-MM-DD)	2012.06.25
V&V Edition	1
V&V Disposition and Status	OK
V&V Charge Time	29.141399795711

A.2 Comments