

V&V Reference Report

L2 ASCDS Version : 8.4.5

Observation 11574 - L2 Version 2
Chandra X-Ray Center

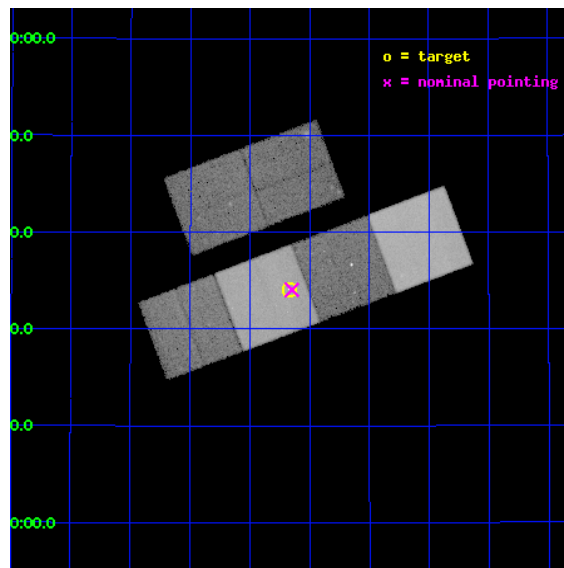
L2 Processing Date : Jun 23 2012

Contents

1	Front	2
2	OBI	3
2.1	OBI	3
2.1.1	Images	3
2.1.2	Bias	3
2.1.3	Parameters	4
2.1.4	Events	4
2.2	Compared Parameters	5
2.3	Aspect	6
2.4	Star Slots	9
2.4.1	Slot 3	9
2.4.2	Slot 4	10
2.4.3	Slot 5	11
2.4.4	Slot 6	12
2.4.5	Slot 7	13
2.5	FID Slots	14
2.5.1	Slot 0	14
2.5.2	Slot 1	15
2.5.3	Slot 2	16
A	Summary	17
A.1	Status	17
A.2	Comments	17

1 Front

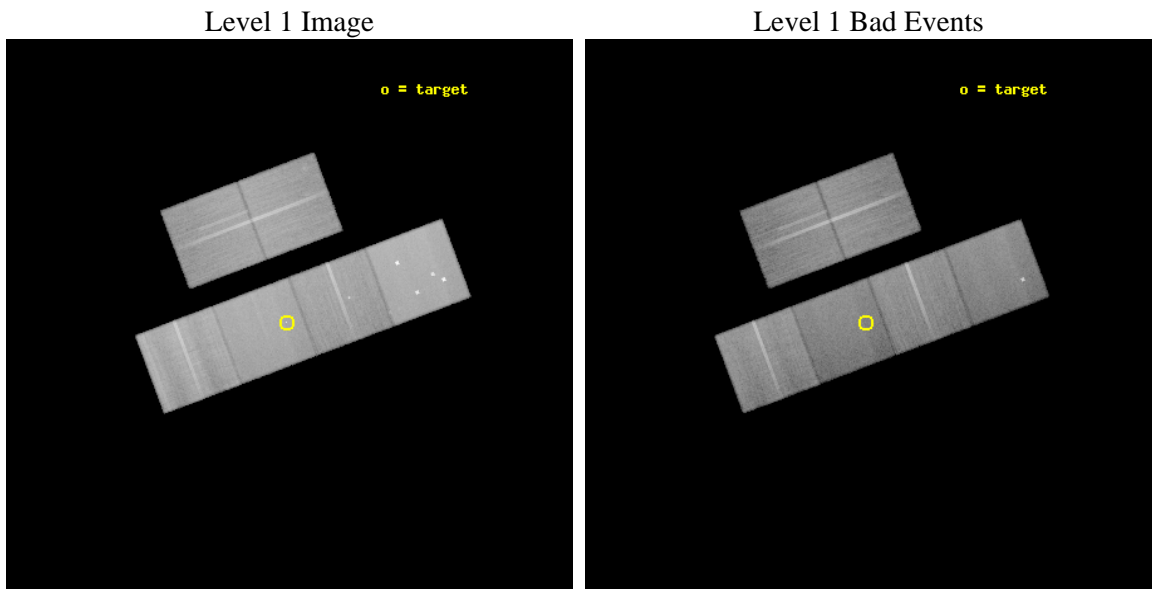
seq_num	702160	Sequence number
obs_id	11574	Observation id
title	The environmental and epoch dependence of radio-loud AGN feedback	
observer	Dr Judith Croston	Principal investigator
object	TOOT 1303+3334	Source name
dtcycle	0	
cycle	P	events from which exps? Prim/Second/Both
ra_targ	195.792917	Observer's specified target RA [deg]
dec_targ	33.568611	Observer's specified target Dec [deg]
ra_nom	195.78720386863	Nominal RA [deg]
dec_nom	33.567680005158	Nominal Dec [deg]
roll_nom	159.34648198942	Nominal Roll [deg]
revision	2	Processing version of data
ontime	40163.19985044	Sum of GTIs [s]
livetime	39654.629230558	Livetime [s]
ontime2	40163.19985044	Sum of GTIs [s]
ontime3	40159.958840251	Sum of GTIs [s]
ontime5	40163.19985044	Sum of GTIs [s]
ontime6	40159.958830118	Sum of GTIs [s]
ontime7	40163.19985044	Sum of GTIs [s]
ontime8	40163.19985044	Sum of GTIs [s]
l2events	511357	Number of level 2 events



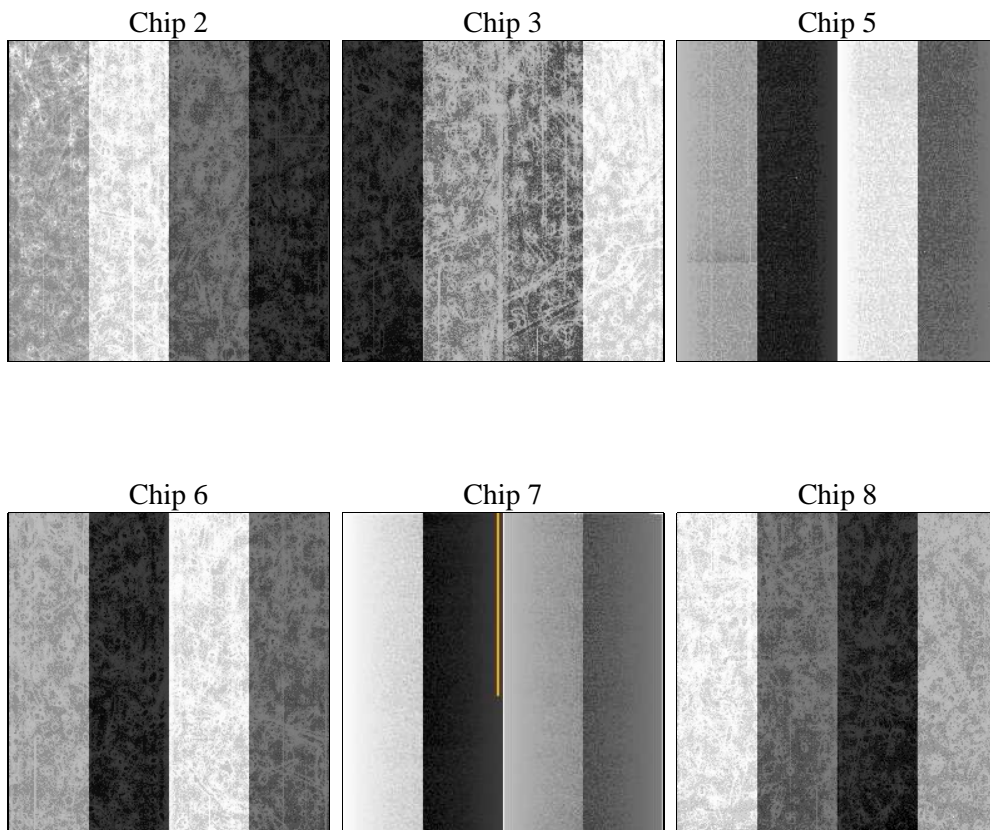
2 OBI

2.1 OBI

2.1.1 Images



2.1.2 Bias



2.1.3 Parameters

obi_num	1	Obi number	sched_exp_time	40000.685000	[s] Scheduled observation exposure time
ascdsver	8.4.5	Processing system revision	ontime	40163.19985044	Sum of GTIs [s]
caldbver	4.4.10	 	ontime2	40163.19985044	Sum of GTIs [s]
date	2012-06-23T06:04:19	Date and time of file creation	ontime3	40159.958840251	Sum of GTIs [s]
revision	2	Processing version of data	ontime5	40163.19985044	Sum of GTIs [s]
			ontime6	40159.958830118	Sum of GTIs [s]
			ontime7	40163.19985044	Sum of GTIs [s]
			ontime8	40163.19985044	Sum of GTIs [s]
			l1events	2263830	Number of level 1 events

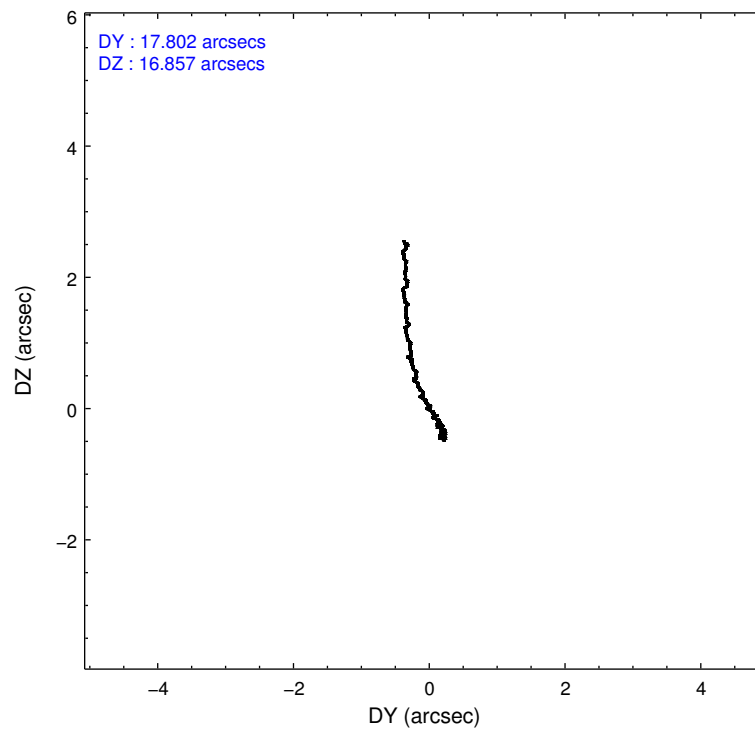
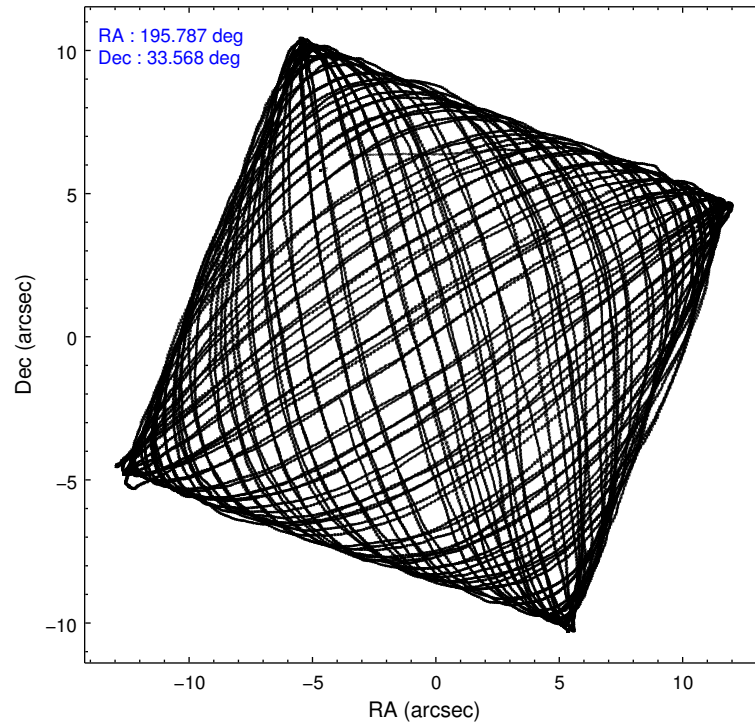
2.1.4 Events

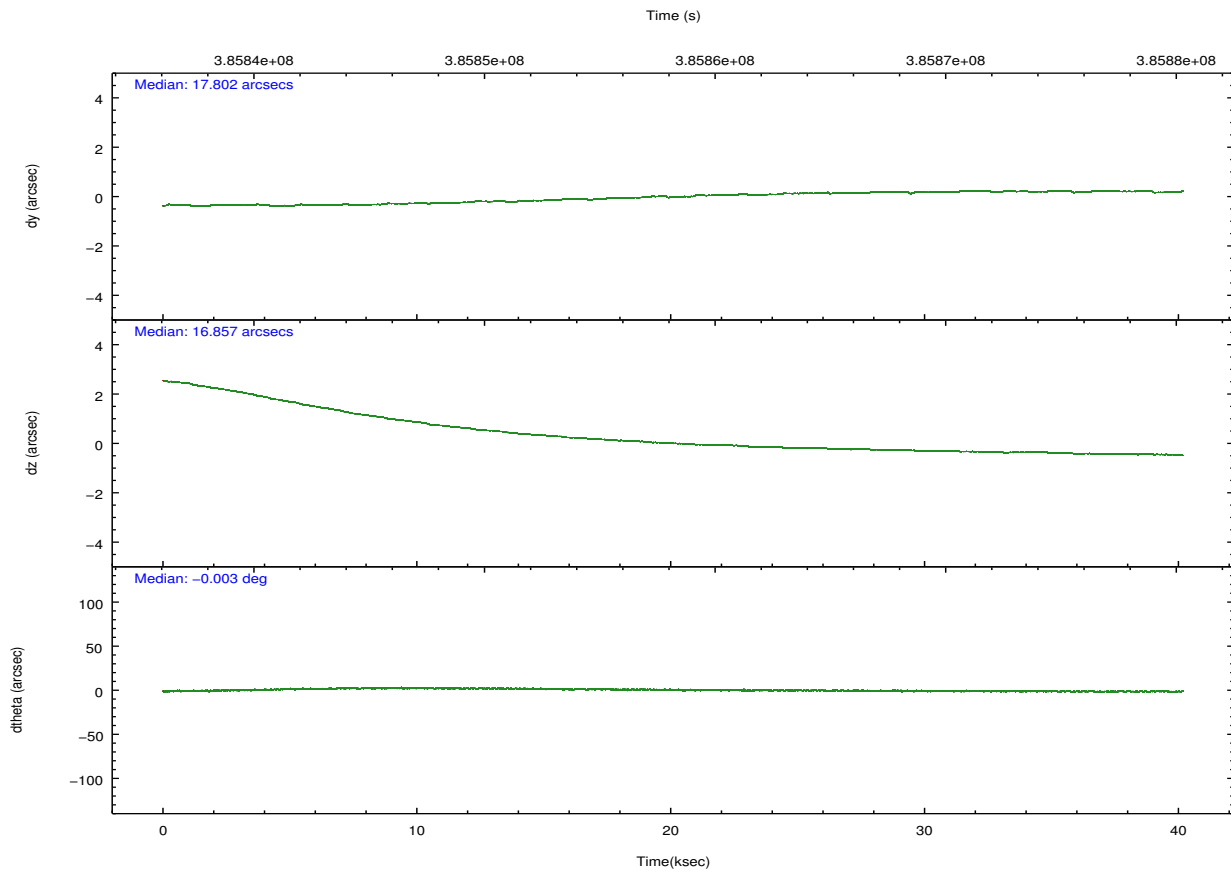
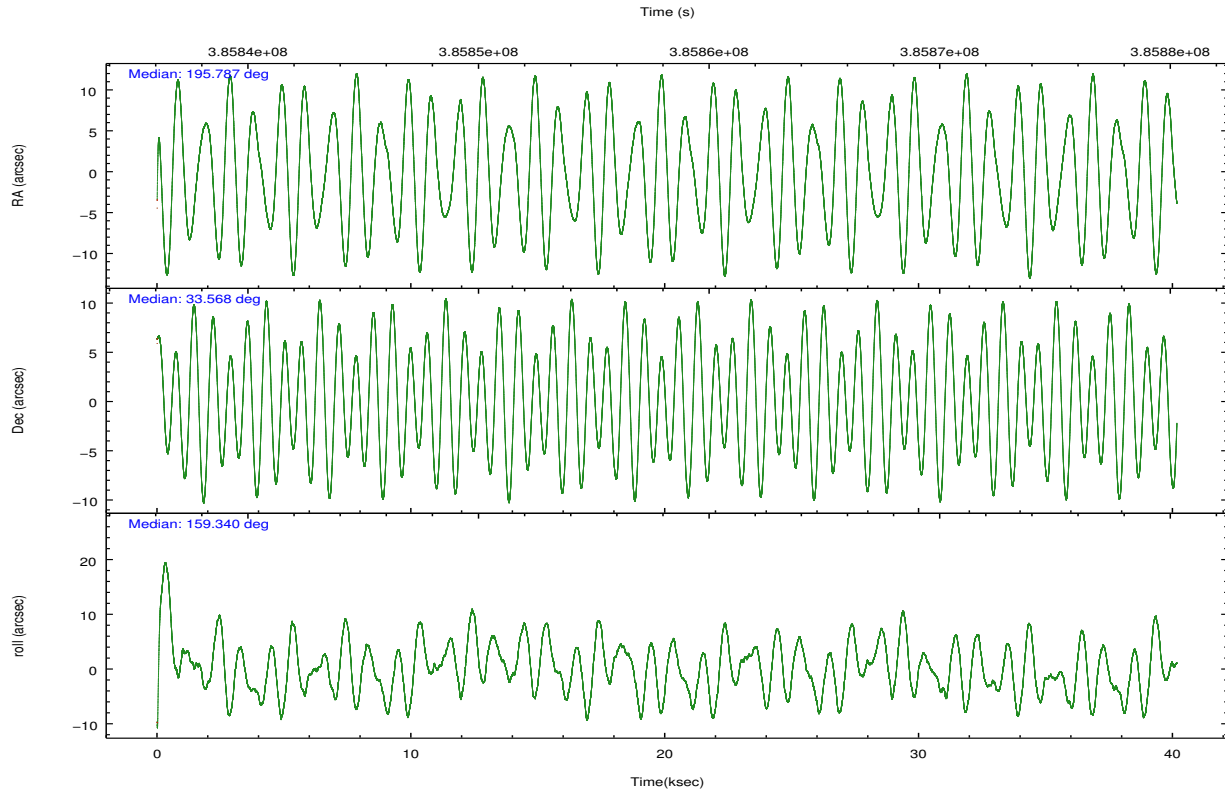
	ccd 2	ccd 3	ccd 5	ccd 6	ccd 7	ccd 8		ccd 2	ccd 3	ccd 5	ccd 6	ccd 7	ccd 8
level 1 events	334494	308662	496145	325661	384618	414250	grade 0 events	12184	10986	36764	13402	16130	30973
rejected events	301086	277242	244677	289167	212117	308716		3%	3%	7%	4%	4%	7%
rejected %	90%	89%	49%	88%	55%	74%	grade 1 events	204	186	916	180	496	356
								0%	0%	0%	0%	0%	0%
							grade 2 events	8299	6940	73934	8037	35431	25334
								2%	2%	14%	2%	9%	6%
							grade 3 events	3390	3541	9233	3770	15470	11162
								1%	1%	1%	1%	4%	2%
							grade 4 events	3486	3528	8630	3749	15125	10449
								1%	1%	1%	1%	3%	2%
							grade 5 events	12182	13792	36140	14077	40036	20341
								3%	4%	7%	4%	10%	4%
							grade 6 events	6210	6575	124166	7727	91215	28126
								1%	2%	25%	2%	23%	6%
							grade 7 events	288539	263114	206362	274719	170715	287509
								86%	85%	41%	84%	44%	69%

2.2 Compared Parameters

Parameter	Planned	Actual	Parameter	Planned	Actual
Instrument	ACIS	ACIS	Obspar format version number	7	7
Detector	ACIS-235678	ACIS-235678	Obspar file type	PREDICTED	ACTUAL
Grating	NONE	NONE	Obspar update status	NONE	UPDATED
Data mode	VFAINT	VFAINT	CCD I0 on	N	N
Observation mode	POINTING	POINTING	CCD I1 on	N	N
[deg] Pointing RA	195.819507	195.7872038686283	CCD I2 on	O1	Y
[deg] Pointing Dec	33.572492	33.56768000515756	CCD I3 on	O2	Y
[deg] Pointing Roll	159.171996	159.3464819894193	CCD S0 on	N	N
[mm] SIM focus pos	-0.684267	-0.6828225247311905	CCD S1 on	Y	Y
[mm] SIM defocus	0	0.001444936568705701	CCD S2 on	Y	Y
[mm] SIM translation stage pos	-190.132523	-190.1425803651734	CCD S3 on	Y	Y
[mm] SIM translation stage offset	0	0.01005778216563158	CCD S4 on	Y	Y
[s] Observation start time (MET)	385838258.184000	385837093.14879	CCD S5 on	N	N
Observation start date	2010-03-24T17:16:32	2010-03-24T16:58:13	Number of optional ACIS chips dropped	0	0
[s] Observation end time (MET)	385878259.184000	385878482.1384	On-chip summing requested	N	N
Observation end date	2010-03-25T04:23:13	2010-03-25T04:28:02	Subarray requested	NONE	NONE
Read mode	TIMED	TIMED	Alternating exposures requested	N	N
			[s] Primary exposure time	0.000000	3.2

2.3 Aspect



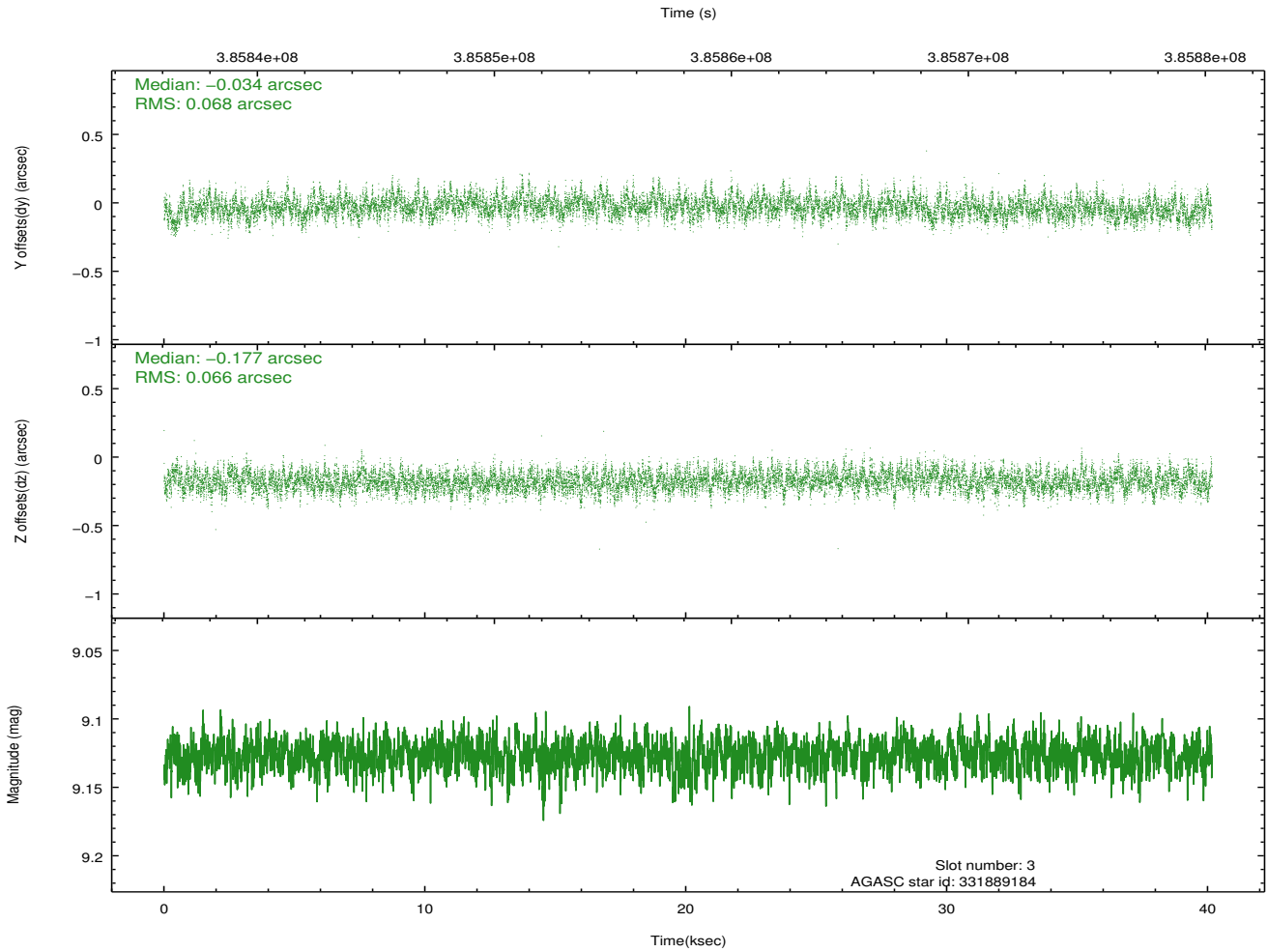
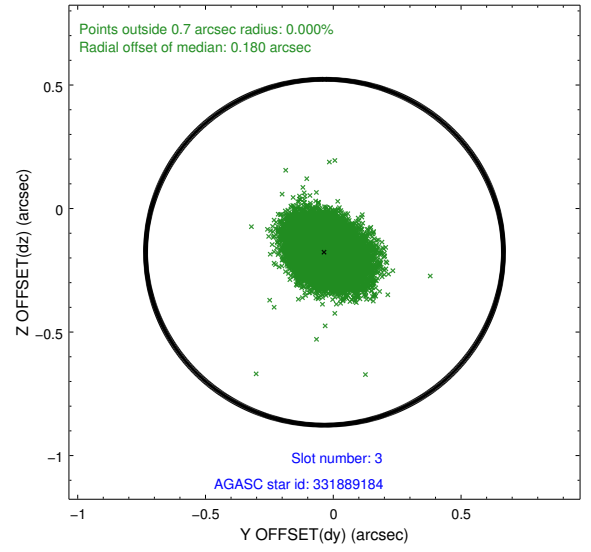
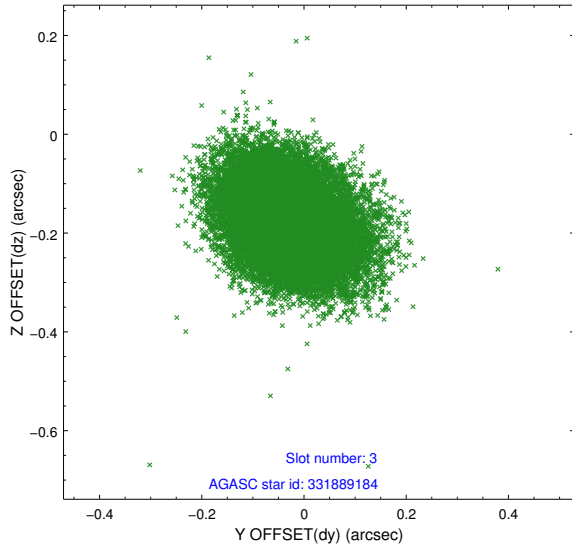


Slot Statistics

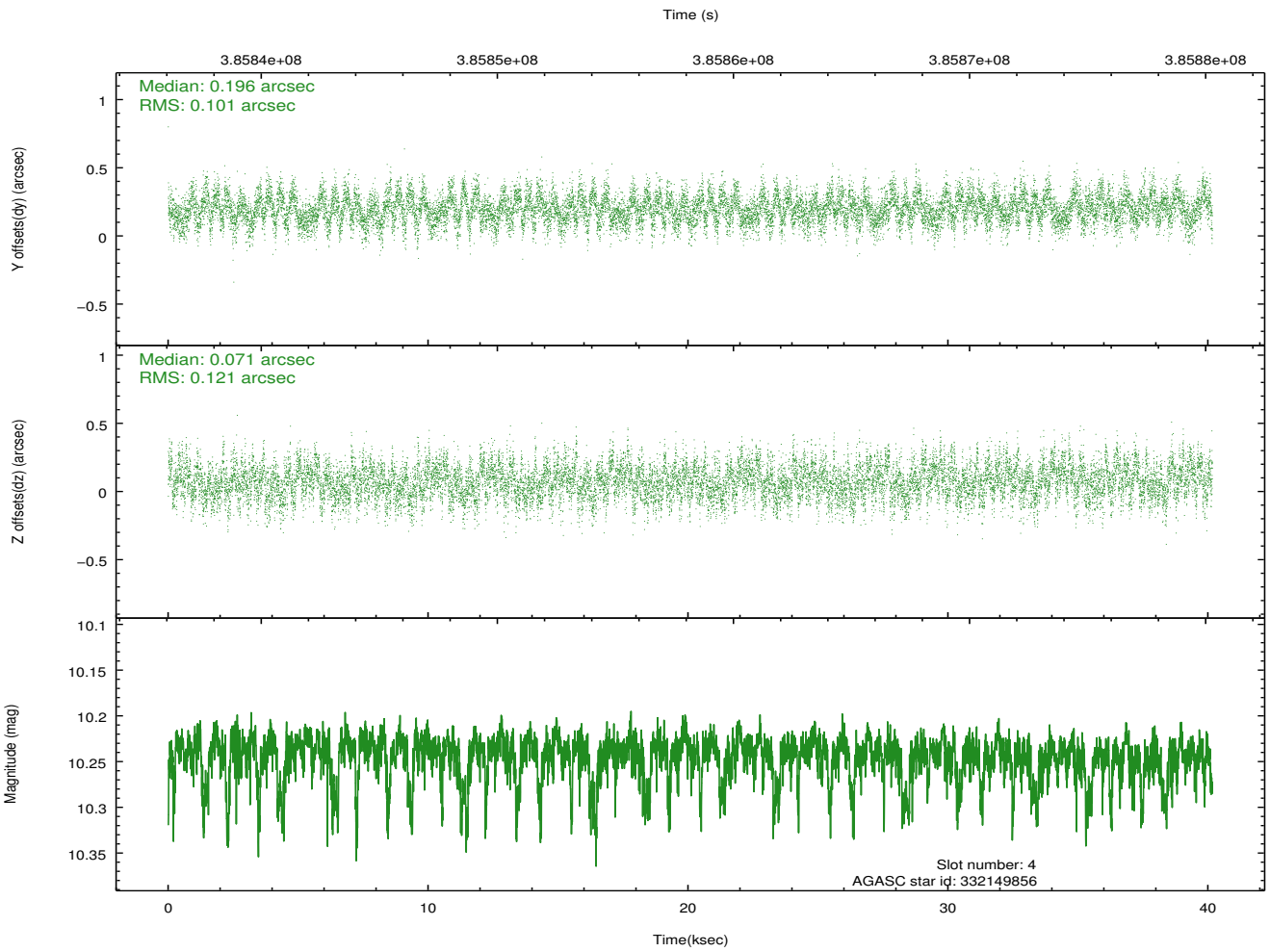
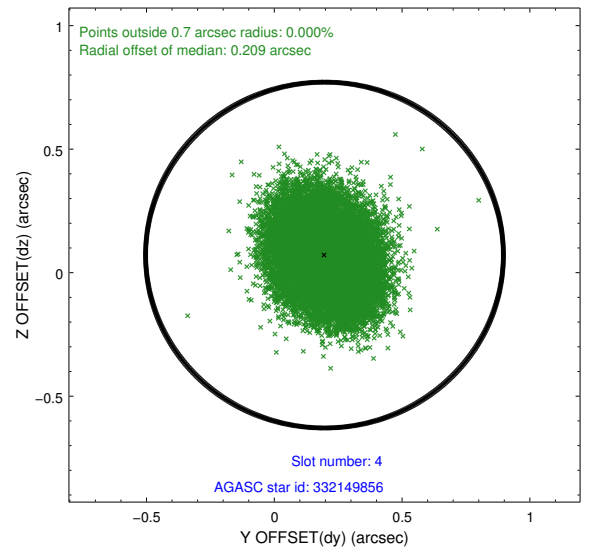
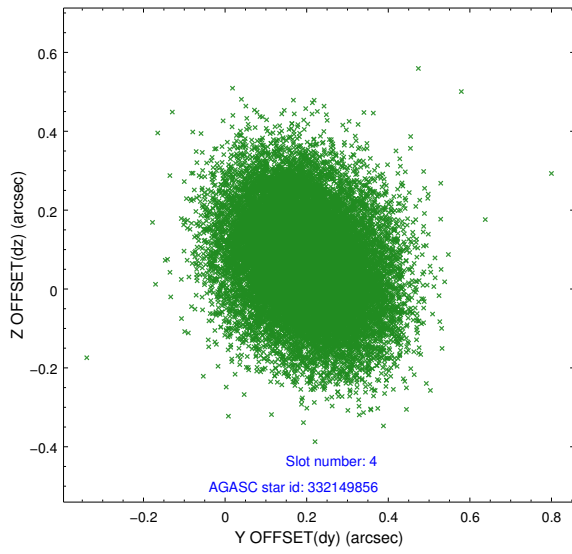
slot	status	id	mag	n_pts	med_dy	med_dz	dr1	dr2	ra	dec	mean_y	mean_z
0	FID	ACIS-S-2	6.93	9798	-0.066	-0.029	0.017	0.025	0.000000	0.000000	-770.89	-1738.64
1	FID	ACIS-S-4	7.00	9798	0.192	0.039	0.013	0.021	0.000000	0.000000	2142.66	169.87
2	FID	ACIS-S-5	7.04	9798	-0.157	-0.002	0.016	0.022	0.000000	0.000000	-1823.78	163.55
3	GUIDE	331889184	9.13	19576	-0.034	-0.177	0.100	0.166	195.971564	32.920476	-1263.99	2030.29
4	GUIDE	332149856	10.24	19556	0.196	0.071	0.169	0.271	196.512520	33.862828	-1561.57	-1719.63
5	GUIDE	332150248	10.37	19210	-0.204	-0.083	0.238	0.477	195.584684	33.771316	911.93	-419.50
6	GUIDE	332150544	10.19	19555	0.056	0.000	0.196	0.308	196.688734	33.757564	-2190.24	-1557.66
7	GUIDE	332148656	7.97	19590	-0.022	0.202	0.098	0.169	196.651338	34.019281	-1744.03	-2394.93

2.4 Star Slots

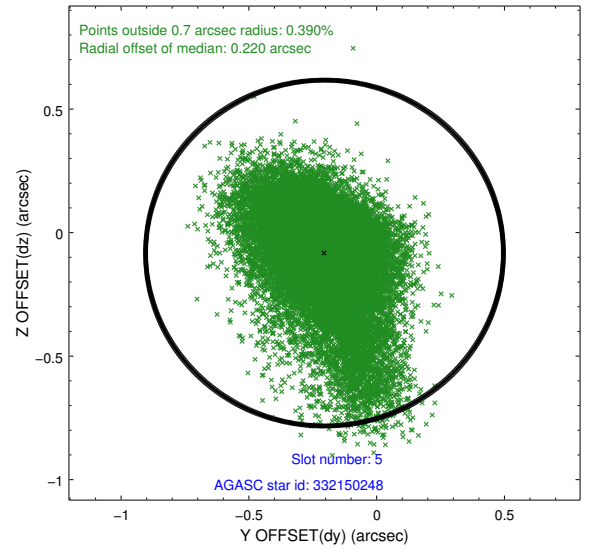
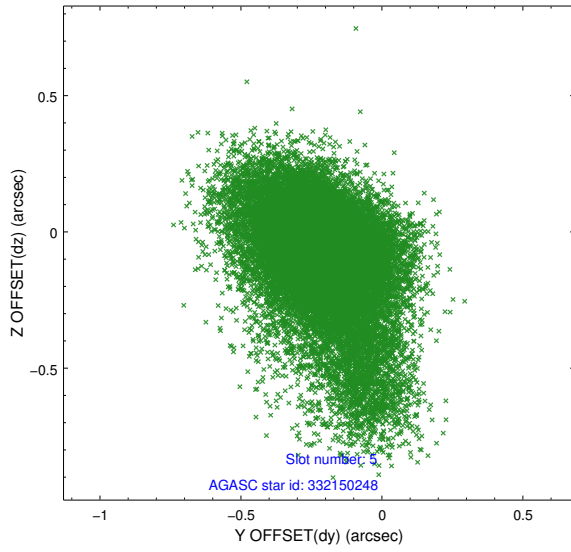
2.4.1 Slot 3



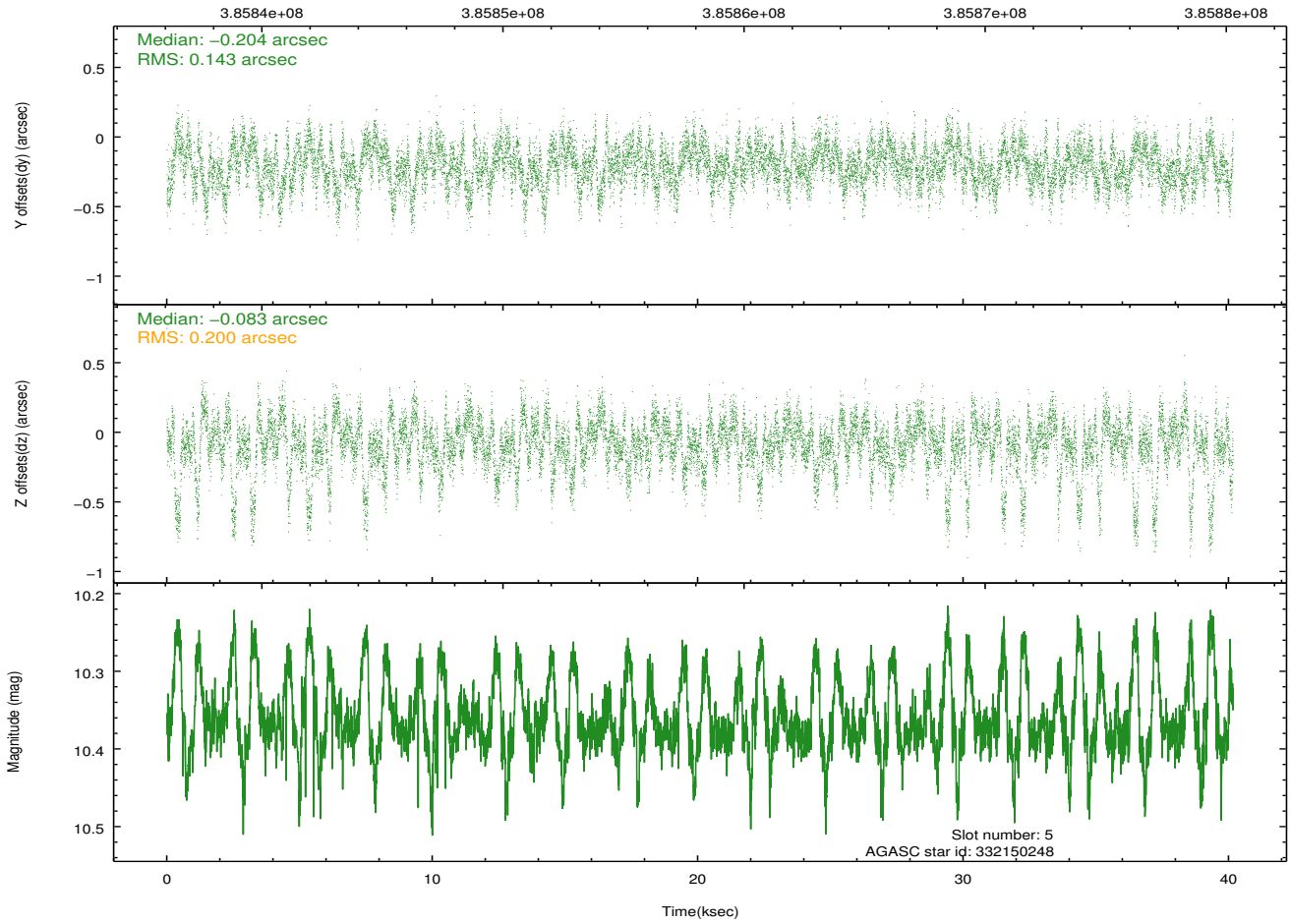
2.4.2 Slot 4



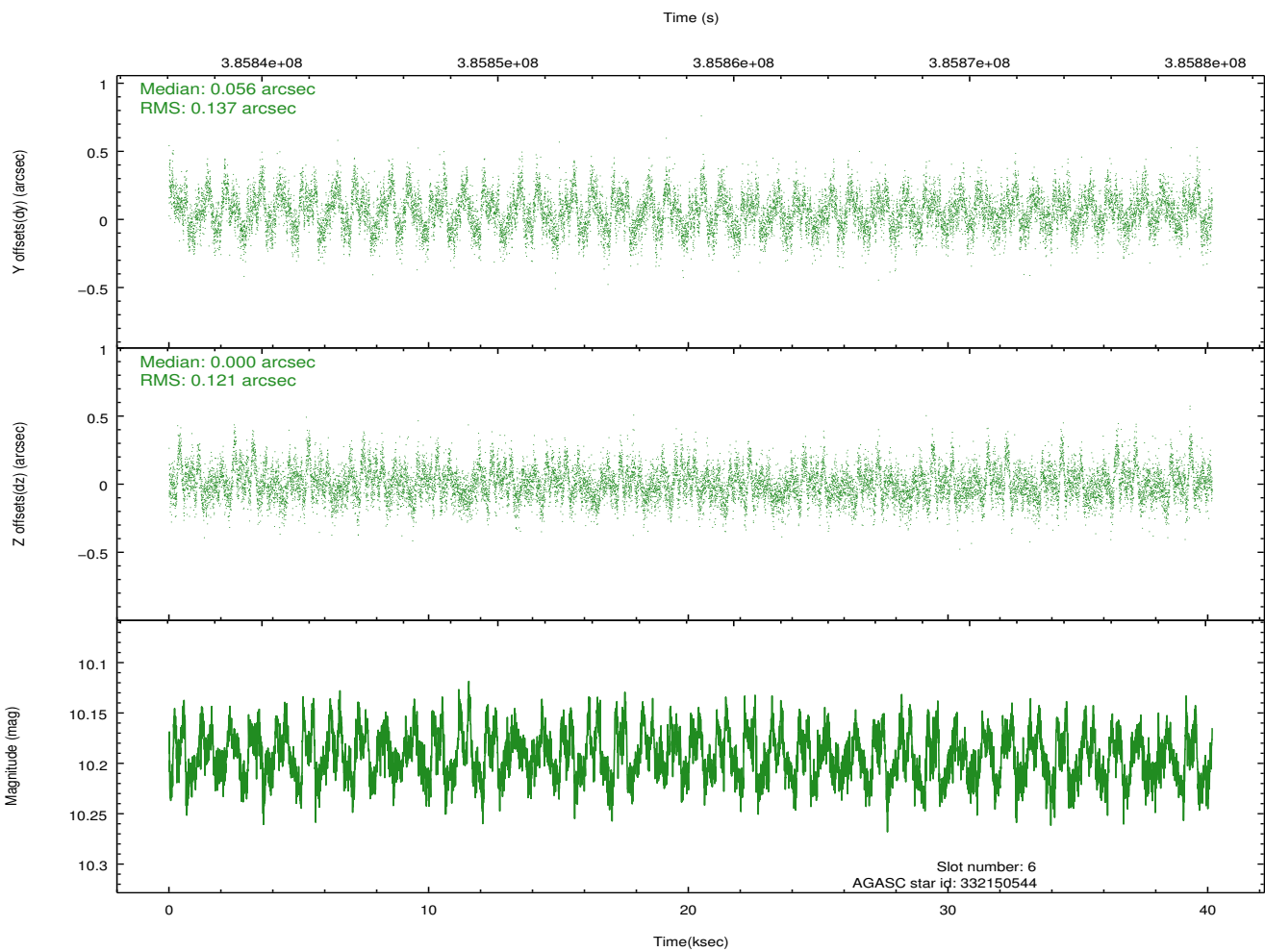
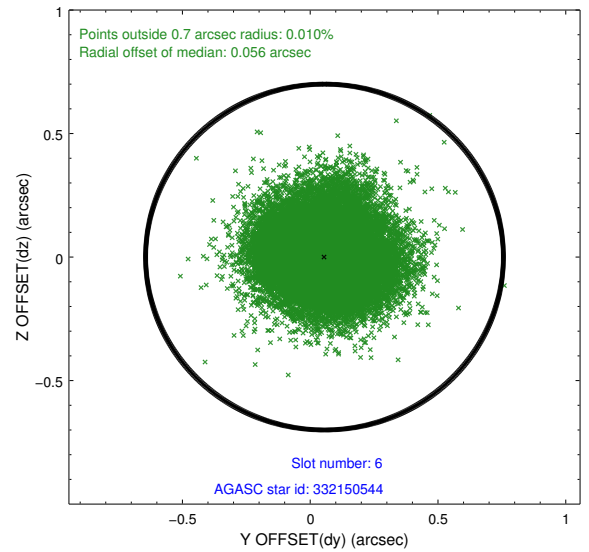
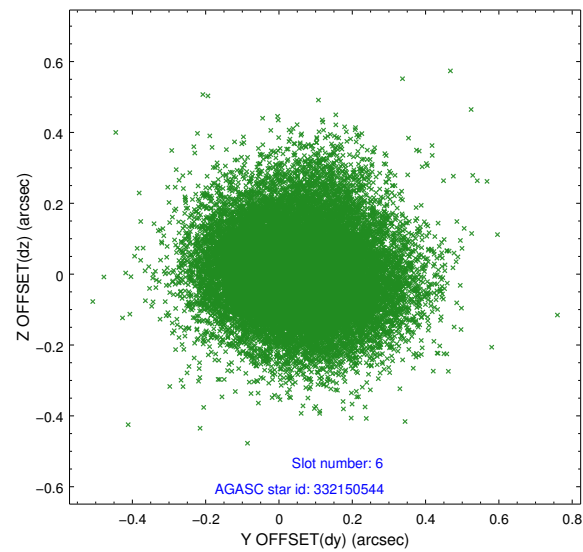
2.4.3 Slot 5



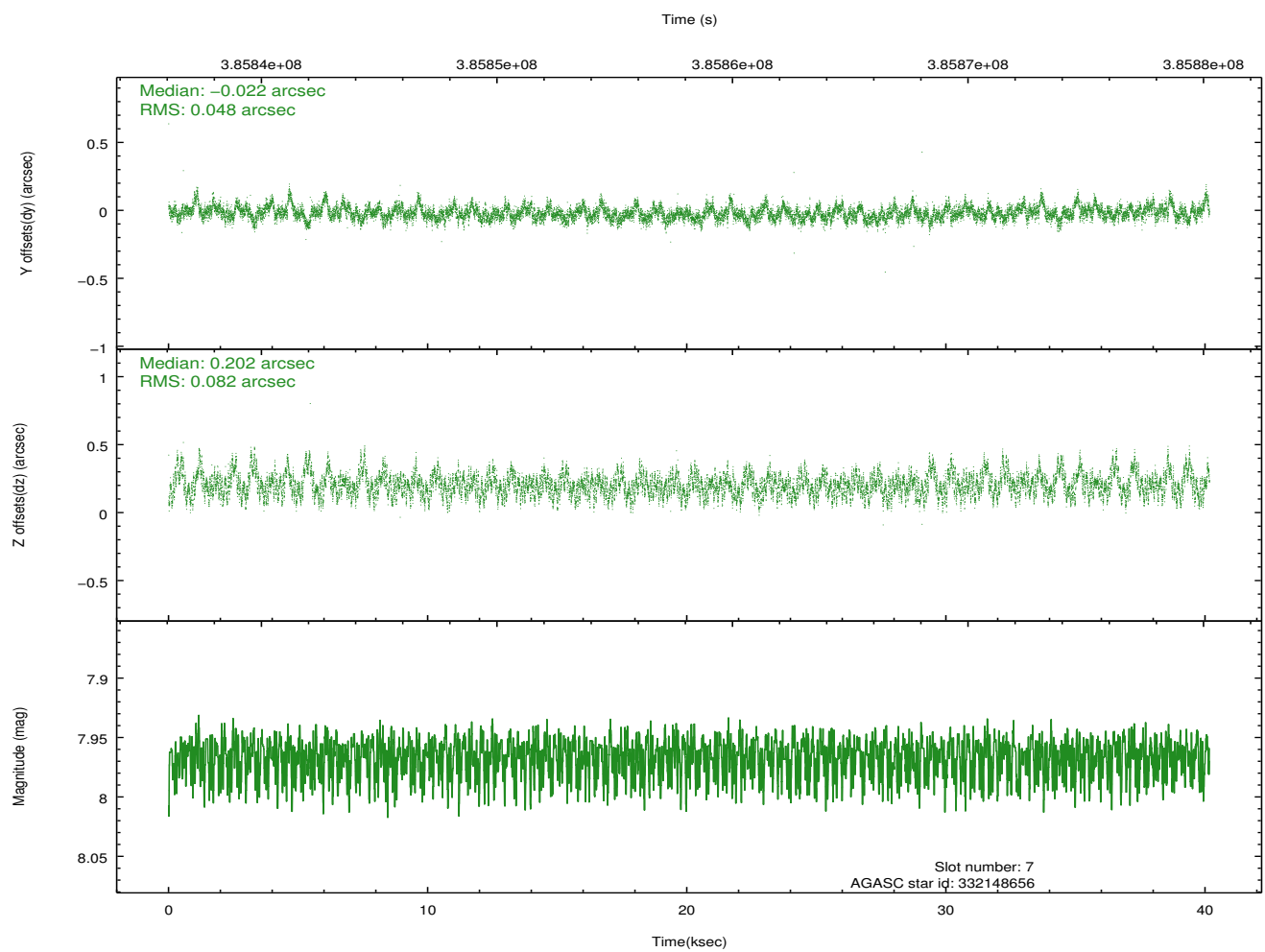
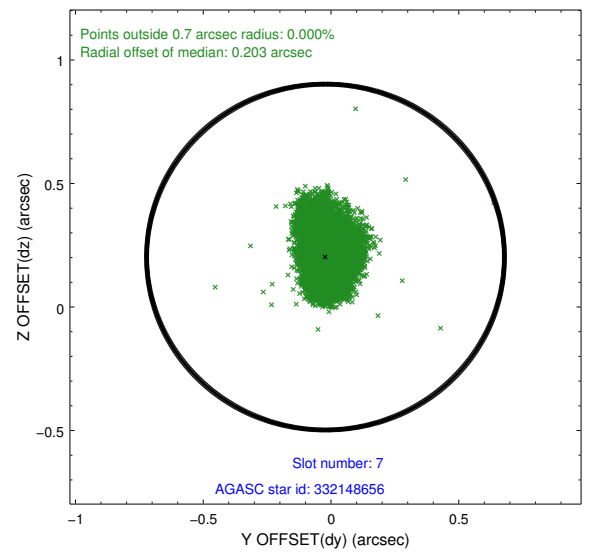
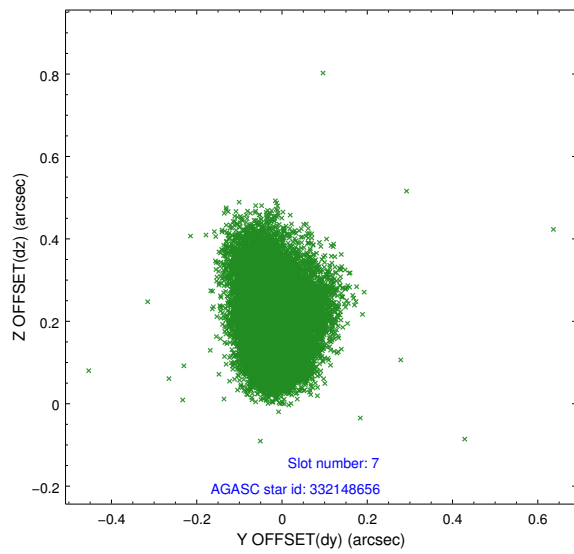
Time (s)



2.4.4 Slot 6

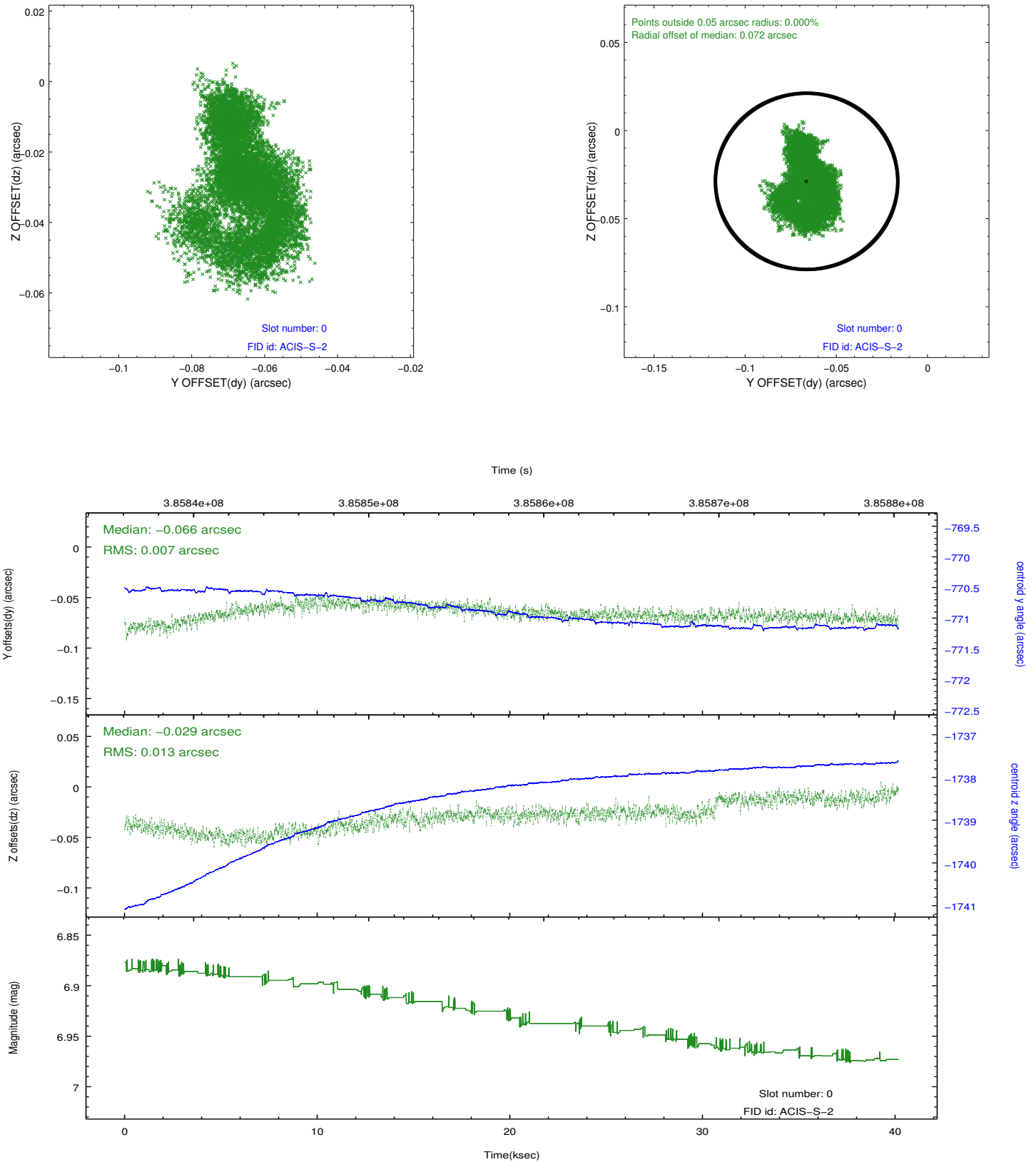


2.4.5 Slot 7

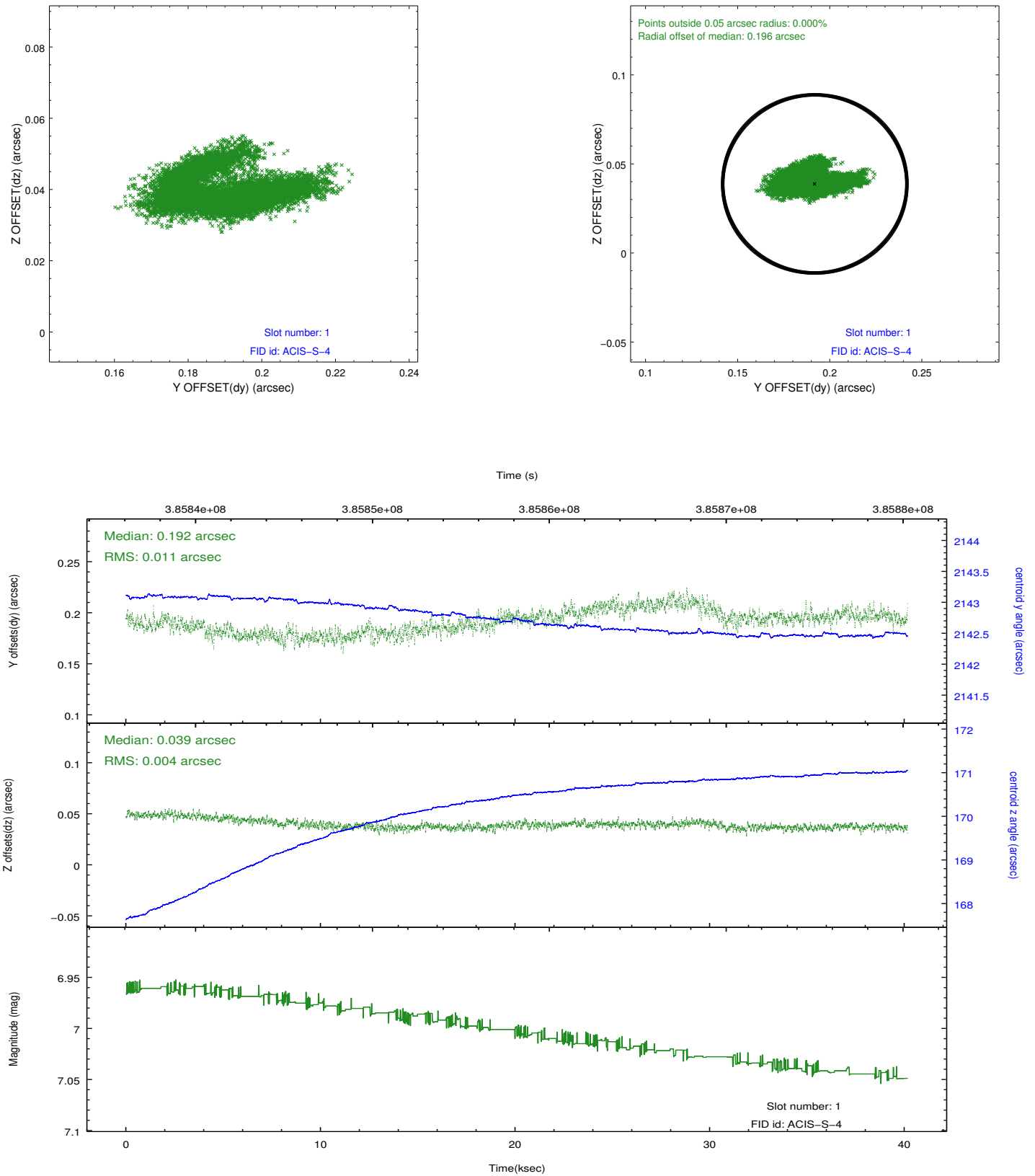


2.5 FID Slots

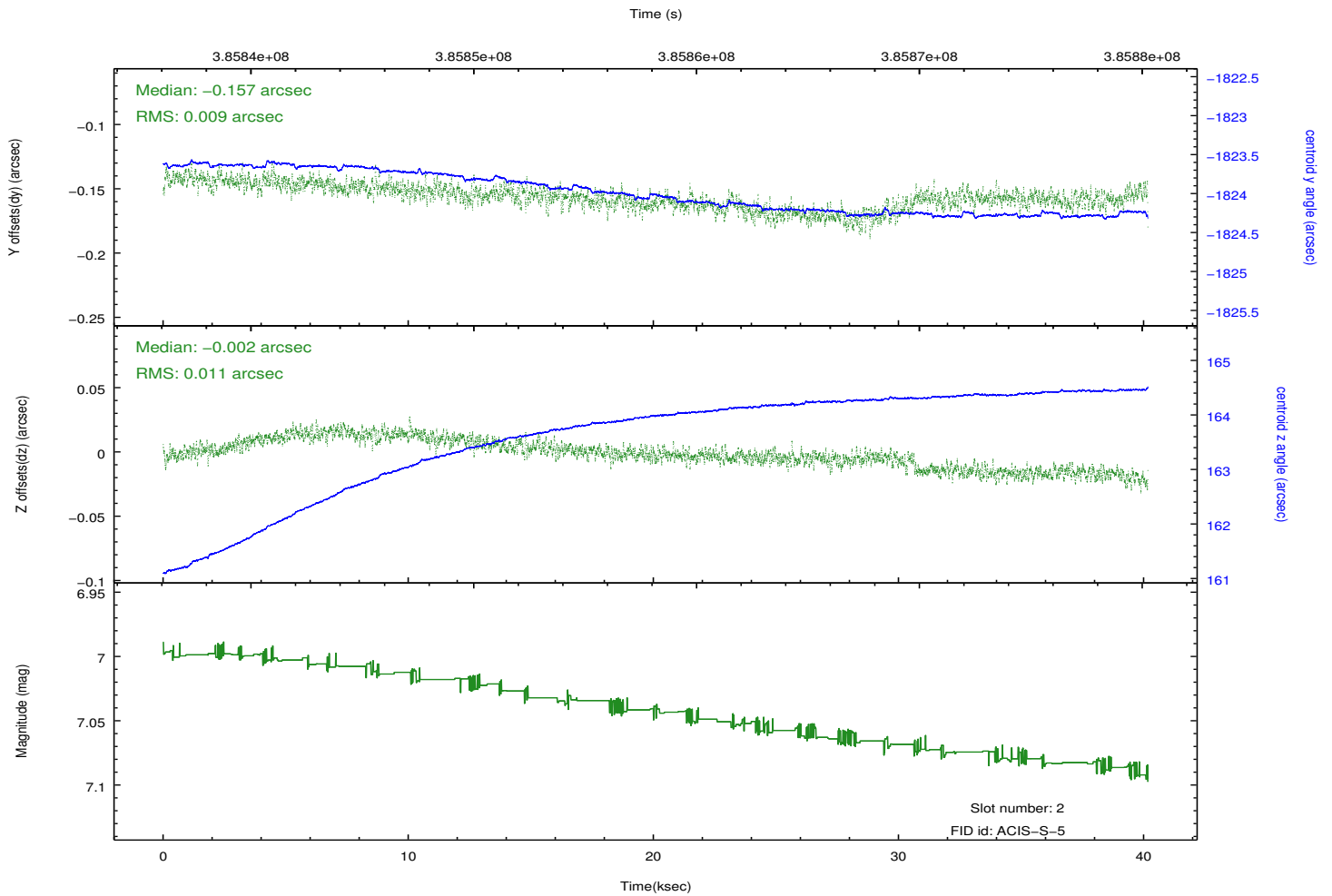
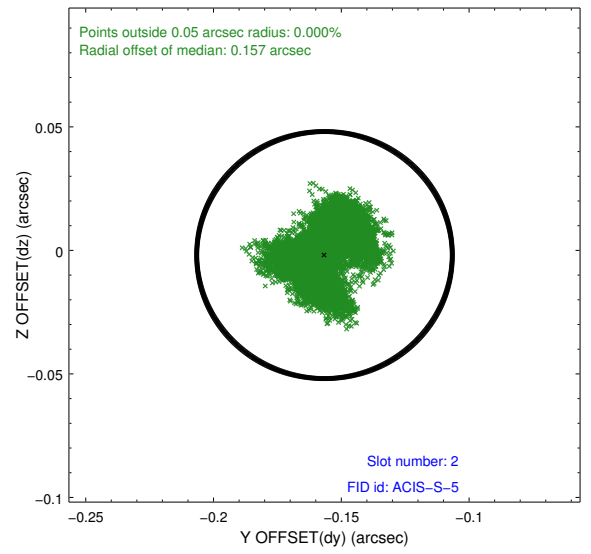
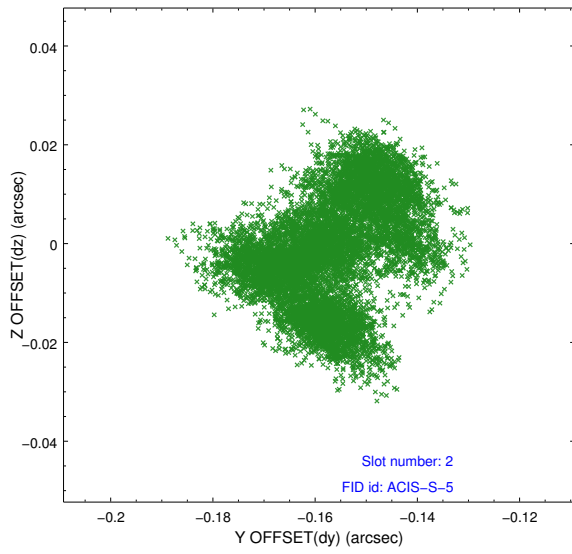
2.5.1 Slot 0



2.5.2 Slot 1



2.5.3 Slot 2



A Summary

A.1 Status

V&V Scientist	Jen Lauer
V&V Date (YYYY-MM-DD)	2012.06.29
V&V Edition	1
V&V Disposition and Status	OK
V&V Charge Time	40.16319985044

A.2 Comments