

# V&V Reference Report

## L2 ASCDS Version : 8.4.5

Observation 11584 - L2 Version 2  
Chandra X-Ray Center

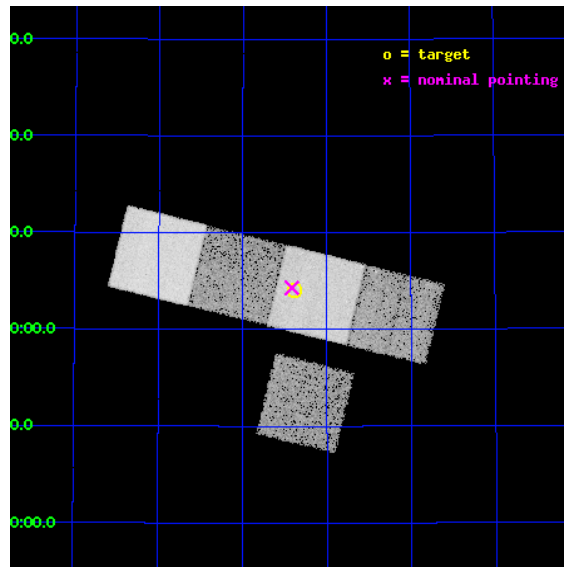
L2 Processing Date : Jul 3 2012

## Contents

<b>1</b>	<b>Front</b>	<b>2</b>
<b>2</b>	<b>OBI</b>	<b>3</b>
2.1	OBI . . . . .	3
2.1.1	Images . . . . .	3
2.1.2	Bias . . . . .	3
2.1.3	Parameters . . . . .	4
2.1.4	Events . . . . .	4
2.2	Compared Parameters . . . . .	5
2.3	Aspect . . . . .	6
2.4	Star Slots . . . . .	9
2.4.1	Slot 3 . . . . .	9
2.4.2	Slot 4 . . . . .	10
2.4.3	Slot 5 . . . . .	11
2.4.4	Slot 6 . . . . .	12
2.4.5	Slot 7 . . . . .	13
2.5	FID Slots . . . . .	14
2.5.1	Slot 0 . . . . .	14
2.5.2	Slot 1 . . . . .	15
2.5.3	Slot 2 . . . . .	16
<b>A</b>	<b>Summary</b>	<b>17</b>
A.1	Status . . . . .	17
A.2	Comments . . . . .	17

# 1 Front

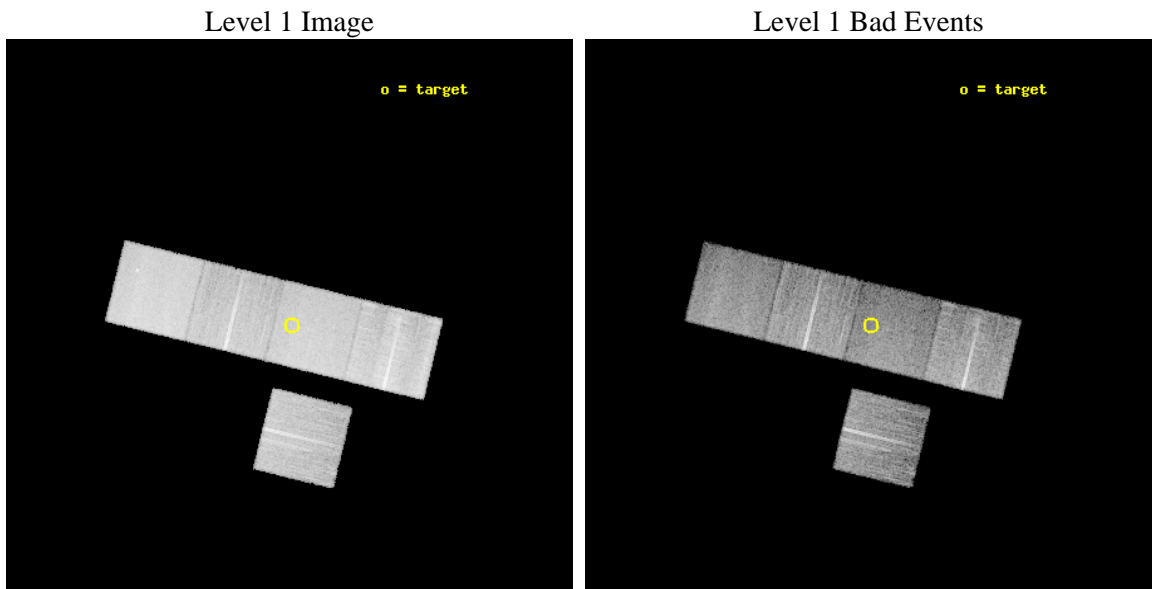
seq_num	702170	Sequence number
obs_id	11584	Observation id
title	X-ray Obscured Broad-line AGN	Proposal title
observer	Dr. Jennifer Donley	Principal investigator
object	RXJ104723.37+540412.6	Source name
dtcycle	0	&#160
cycle	P	events from which exps? Prim/Second/Both
ra_targ	161.847917	Observer's specified target RA [deg]
dec_targ	54.068528	Observer's specified target Dec [deg]
ra_nom	161.85372410252	Nominal RA [deg]
dec_nom	54.071969028965	Nominal Dec [deg]
roll_nom	13.723763458764	Nominal Roll [deg]
revision	2	Processing version of data
ontime	15772.800121307	Sum of GTIs [s]
livetime	15566.716875956	Livetime [s]
ontime3	15769.659160972	Sum of GTIs [s]
ontime5	15772.800121307	Sum of GTIs [s]
ontime6	15766.518140674	Sum of GTIs [s]
ontime7	15772.800121307	Sum of GTIs [s]
ontime8	15763.377040684	Sum of GTIs [s]
l2events	178583	Number of level 2 events



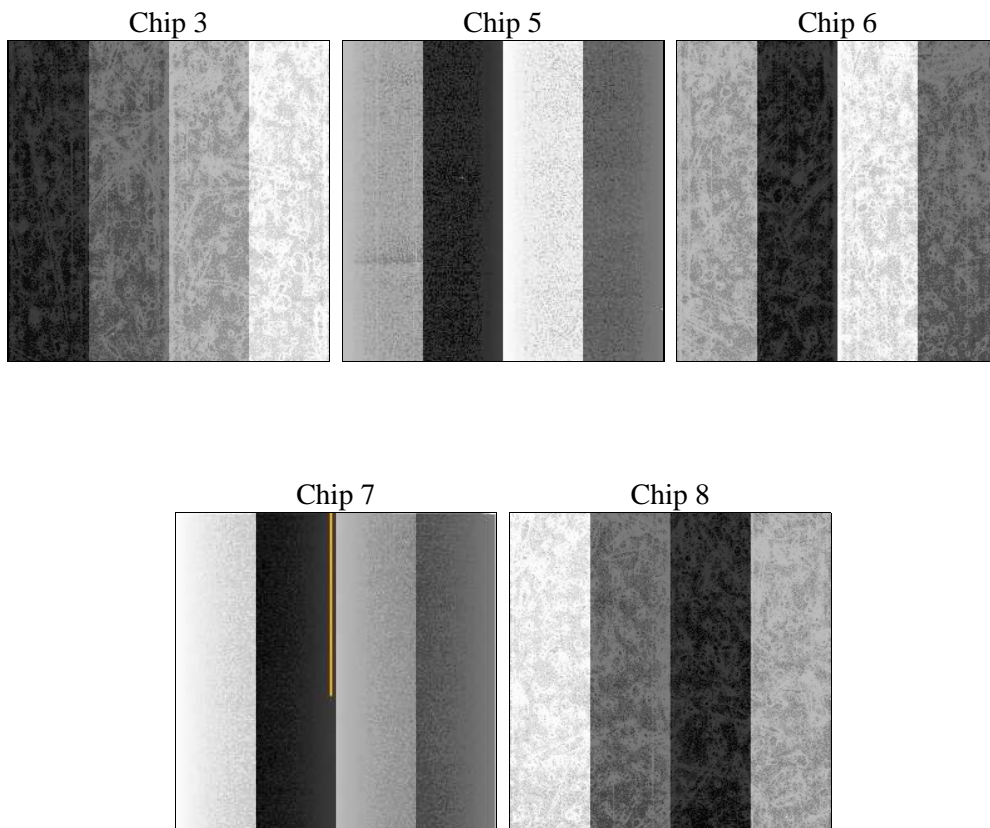
## 2 OBI

### 2.1 OBI

#### 2.1.1 Images



#### 2.1.2 Bias



### 2.1.3 Parameters

obi_num	0	Obi number	sched_exp_time	16000.000000	[s] Scheduled observation exposure time
ascdsver	8.4.5	Processing system revision	ontime	15772.800121307	Sum of GTIs [s]
caldbver	4.5.0	&#160	ontime3	15769.659160972	Sum of GTIs [s]
date	2012-07-03T08:05:01	Date and time of file creation	ontime5	15772.800121307	Sum of GTIs [s]
revision	2	Processing version of data	ontime6	15766.518140674	Sum of GTIs [s]
			ontime7	15772.800121307	Sum of GTIs [s]
			ontime8	15763.377040684	Sum of GTIs [s]
			l1events	693281	Number of level 1 events

### 2.1.4 Events

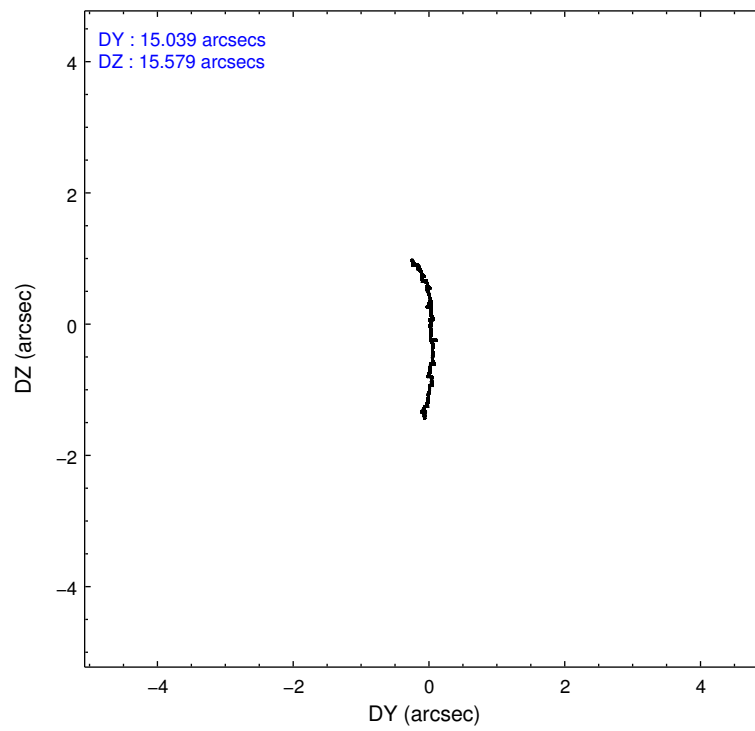
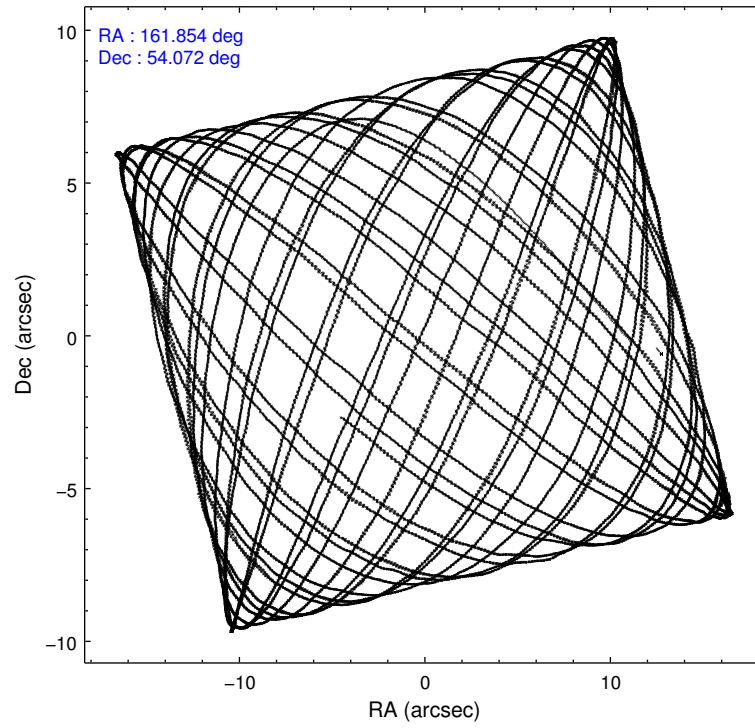
	ccd 3	ccd 5	ccd 6	ccd 7	ccd 8
level 1 events	106542	171315	119353	141850	154221
rejected events	95090	88092	105962	78375	113872
rejected %	89%	51%	88%	55%	73%

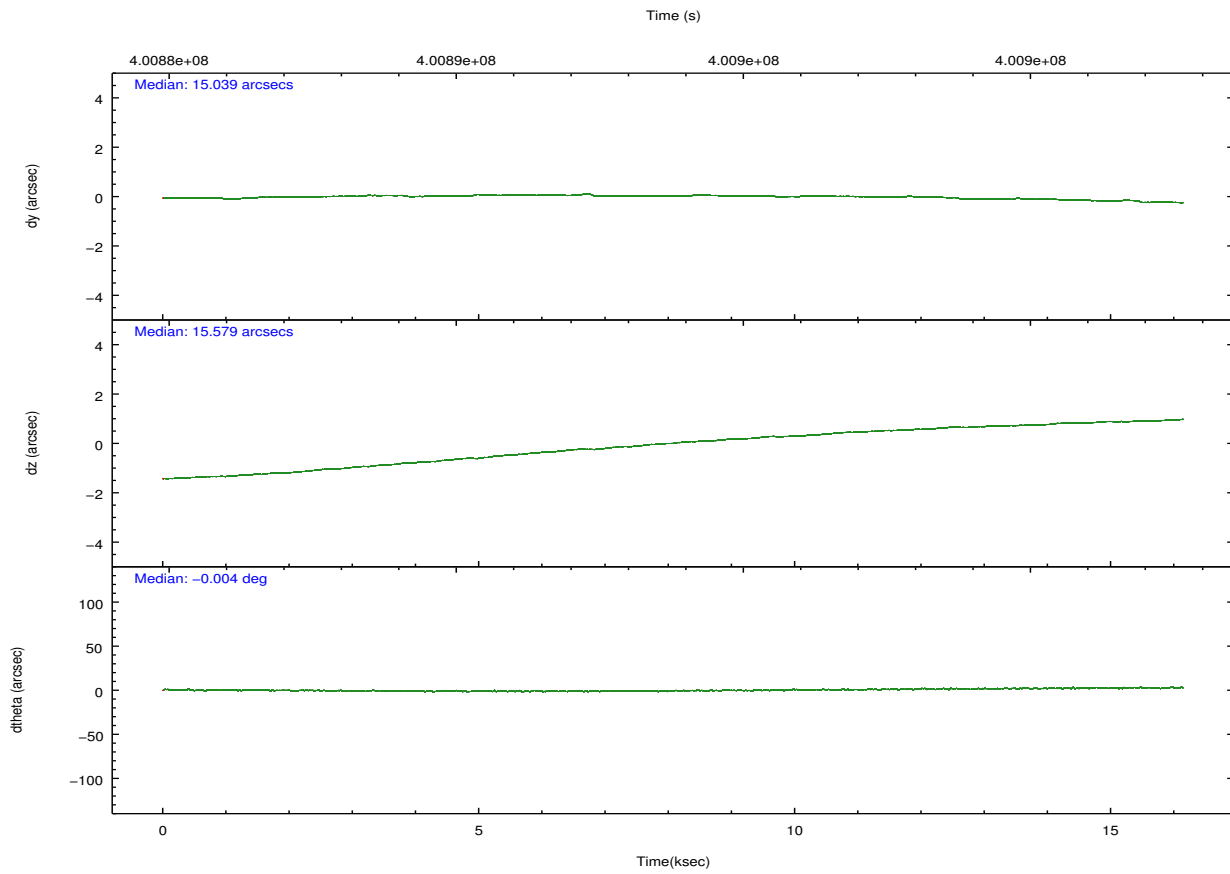
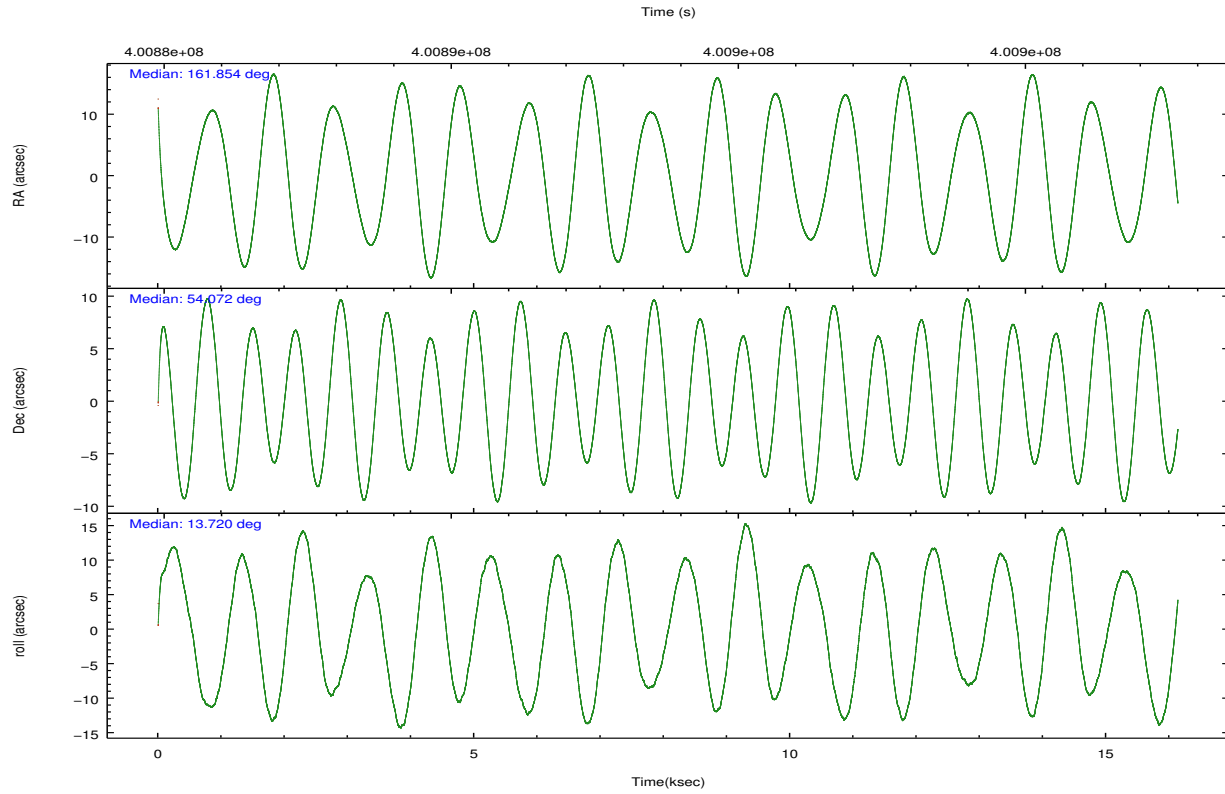
	ccd 3	ccd 5	ccd 6	ccd 7	ccd 8
grade 0 events	4051	5762	4716	5941	11779
	3%	3%	3%	4%	7%
grade 1 events	63	274	61	186	138
	0%	0%	0%	0%	0%
grade 2 events	2593	25238	3012	13016	9356
	2%	14%	2%	9%	6%
grade 3 events	1245	3498	1388	5660	4280
	1%	2%	1%	3%	2%
grade 4 events	1273	3384	1349	5557	3955
	1%	1%	1%	3%	2%
grade 5 events	5101	13552	5239	14859	7372
	4%	7%	4%	10%	4%
grade 6 events	2291	45359	2928	33311	10982
	2%	26%	2%	23%	7%
grade 7 events	89925	74248	100660	63320	106359
	84%	43%	84%	44%	68%

## 2.2 Compared Parameters

Parameter	Planned	Actual	Parameter	Planned	Actual
Instrument	ACIS	ACIS	Obspar format version number	7	7
Detector	ACIS-35678	ACIS-35678	Obspar file type	PREDICTED	ACTUAL
Grating	NONE	NONE	Obspar update status	NONE	UPDATED
Data mode	VFAINT	VFAINT	CCD I0 on	N	N
Observation mode	POINTING	POINTING	CCD I1 on	N	N
[deg] Pointing RA	161.820490	161.8537241025224	CCD I2 on	N	N
[deg] Pointing Dec	54.052806	54.07196902896455	CCD I3 on	O1	Y
[deg] Pointing Roll	13.594047	13.7237634587635	CCD S0 on	N	N
[mm] SIM focus pos	-0.684267	-0.6828225247311905	CCD S1 on	Y	Y
[mm] SIM defocus	0	0.001444936568705701	CCD S2 on	Y	Y
[mm] SIM translation stage pos	-190.132523	-190.1400660498719	CCD S3 on	Y	Y
[mm] SIM translation stage offset	0	0.00754346686406393	CCD S4 on	Y	Y
[s] Observation start time (MET)	400885842.184000	400884677.14158	CCD S5 on	N	N
Observation start date	2010-09-14T21:09:36	2010-09-14T20:51:17	Number of optional ACIS chips dropped	0	0
[s] Observation end time (MET)	400901842.184000	400903092.29252	On-chip summing requested	N	N
Observation end date	2010-09-15T01:36:16	2010-09-15T01:58:12	Subarray requested	NONE	NONE
Read mode	TIMED	TIMED	Alternating exposures requested	N	N
			[s] Primary exposure time	0.000000	3.1

## 2.3 Aspect



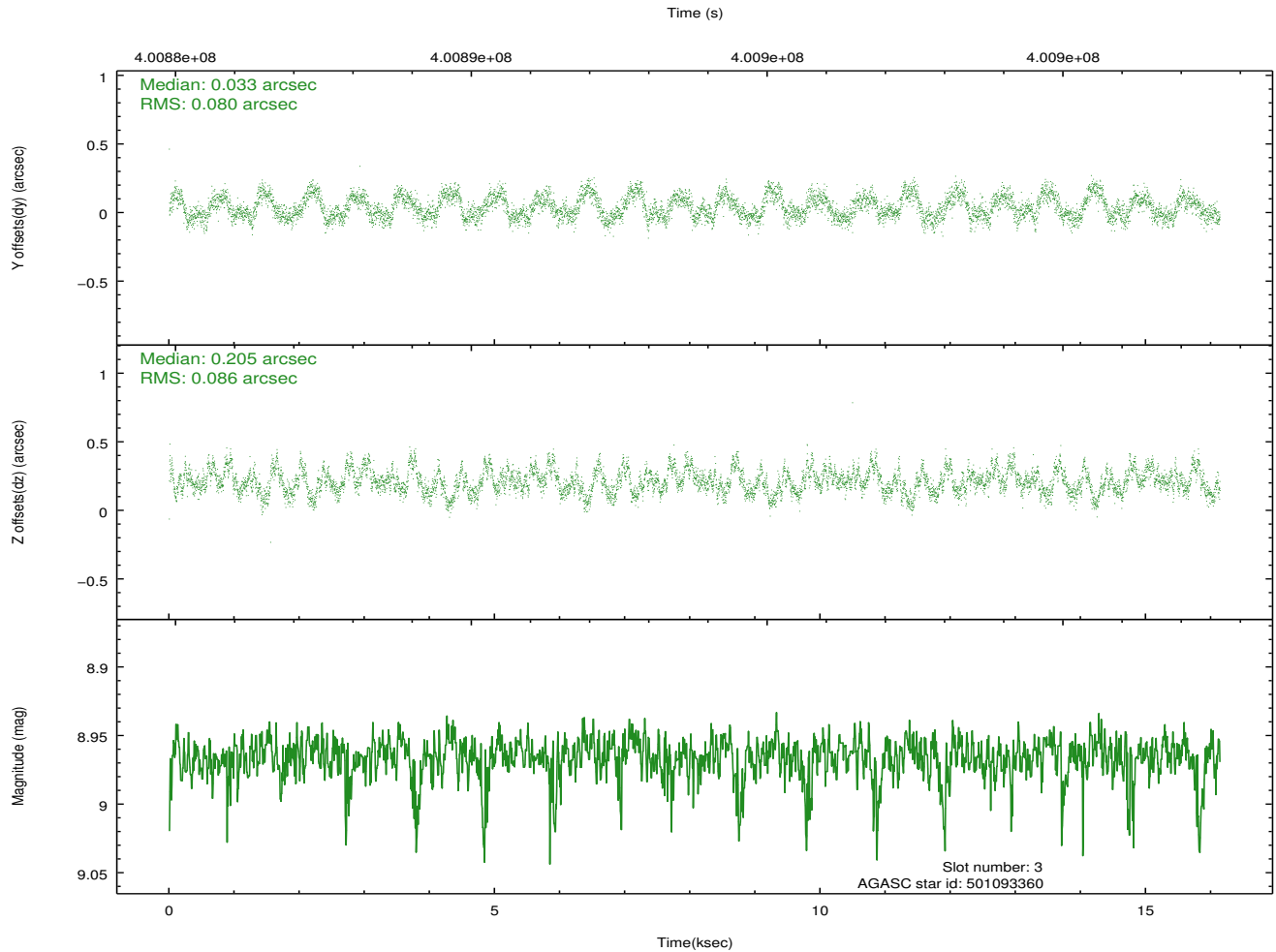
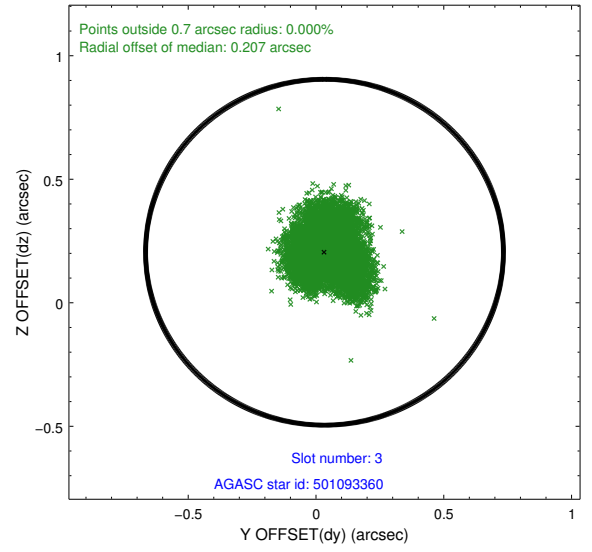
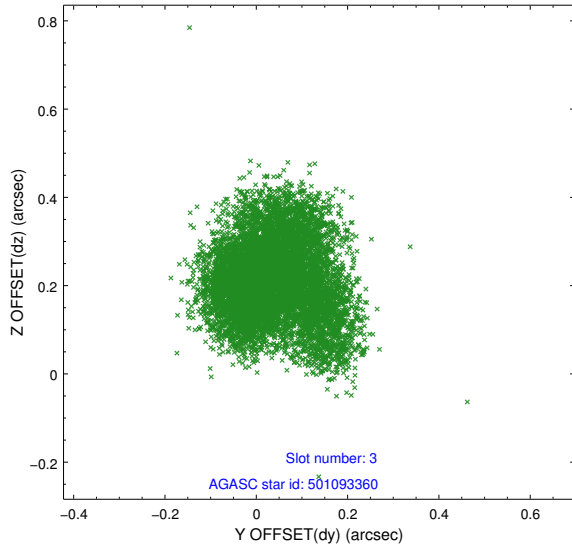


### Slot Statistics

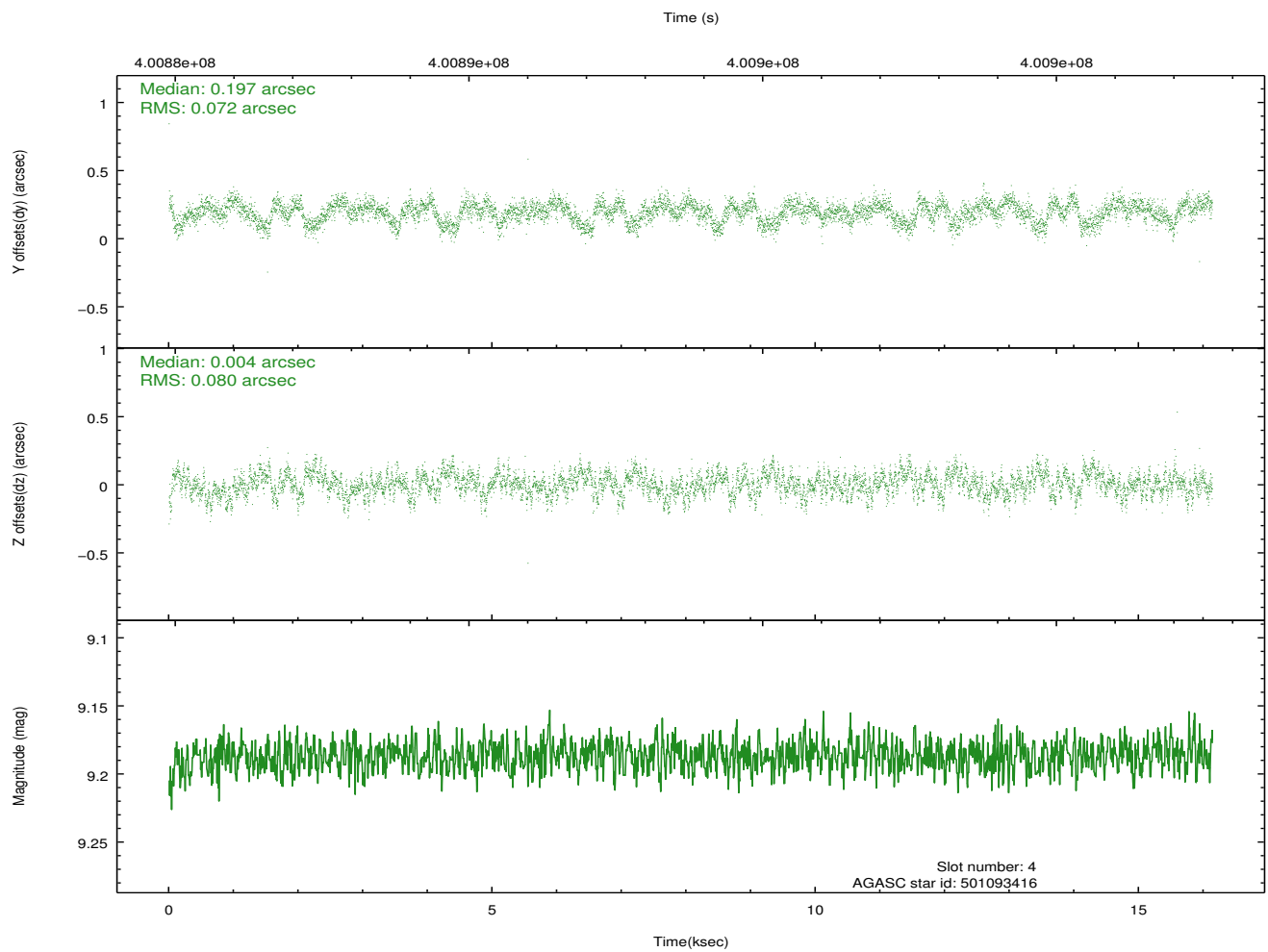
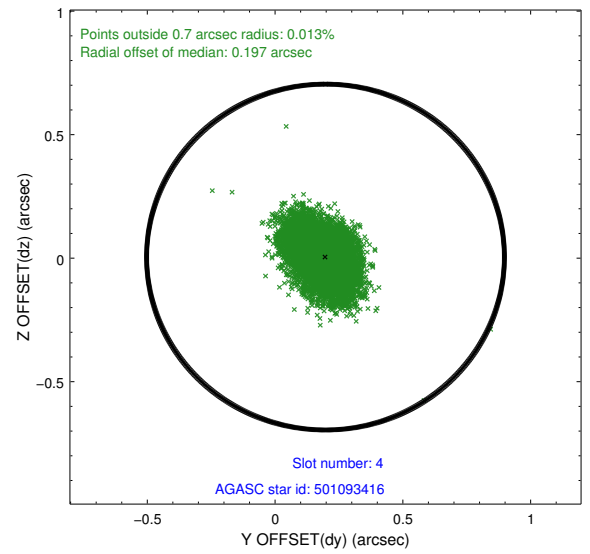
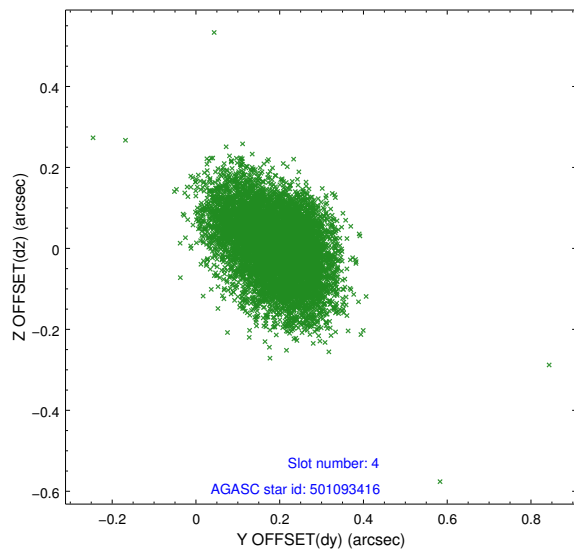
slot	status	id	mag	n_pts	med_dy	med_dz	dr1	dr2	ra	dec	mean_y	mean_z
0	FID	ACIS-S-2	6.95	3937	-0.092	-0.027	0.013	0.033	0.000000	0.000000	-768.07	-1736.90
1	FID	ACIS-S-4	7.03	3937	0.194	0.053	0.008	0.015	0.000000	0.000000	2145.37	171.39
2	FID	ACIS-S-5	7.06	3937	-0.133	-0.016	0.011	0.031	0.000000	0.000000	-1820.61	165.30
3	GUIDE	501093360	8.97	7869	0.033	0.205	0.126	0.197	161.609841	53.785468	-661.26	-829.18
4	GUIDE	501093416	9.19	7864	0.197	0.004	0.114	0.188	161.806431	53.617773	-396.90	-1515.15
5	GUIDE	501094528	8.43	7871	-0.152	0.026	0.074	0.118	162.791427	53.865668	1848.40	-1125.44
6	GUIDE	501095104	8.85	7815	0.136	-0.023	0.071	0.115	160.786059	53.929780	-2230.88	100.24
7	GUIDE	501090840	8.39	7868	-0.213	-0.216	0.069	0.111	162.716236	54.745640	2397.81	1998.54

## 2.4 Star Slots

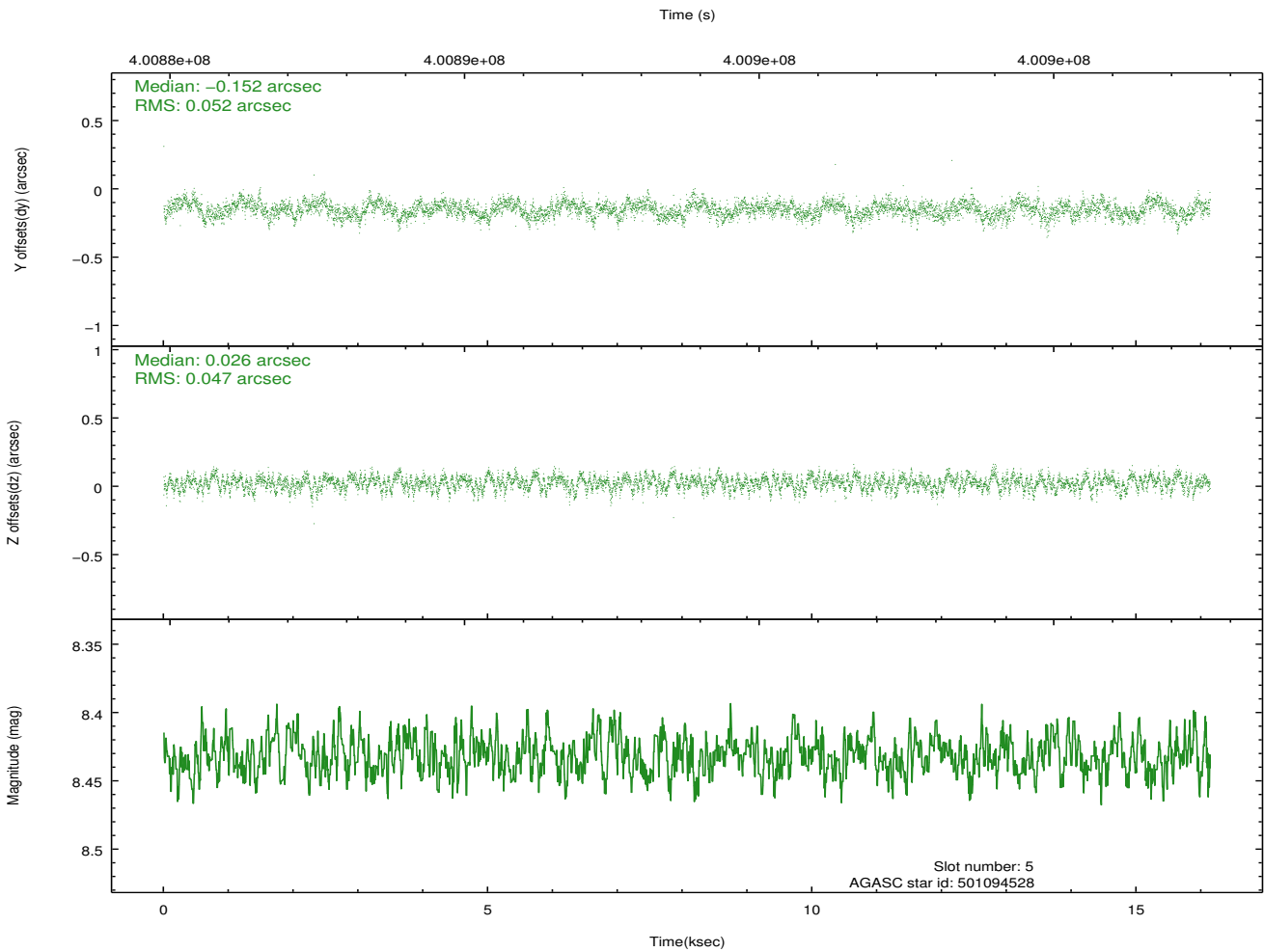
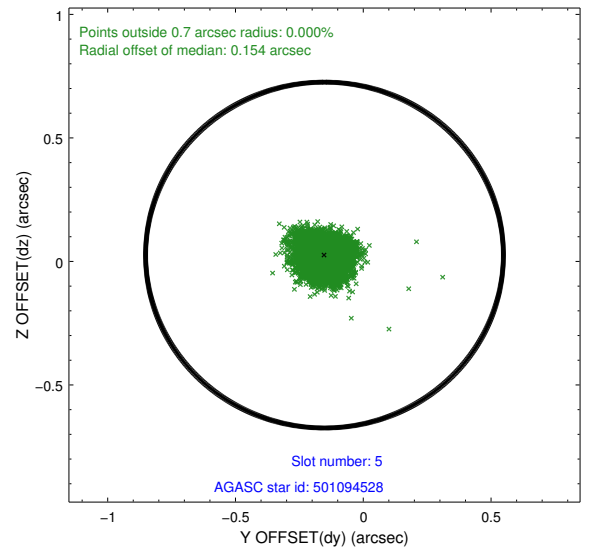
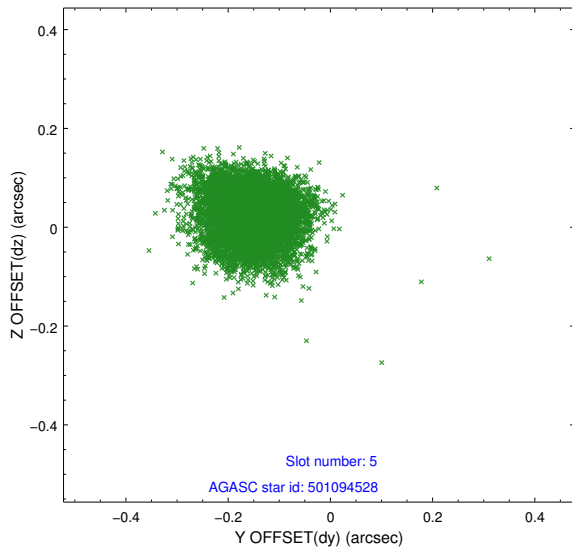
### 2.4.1 Slot 3



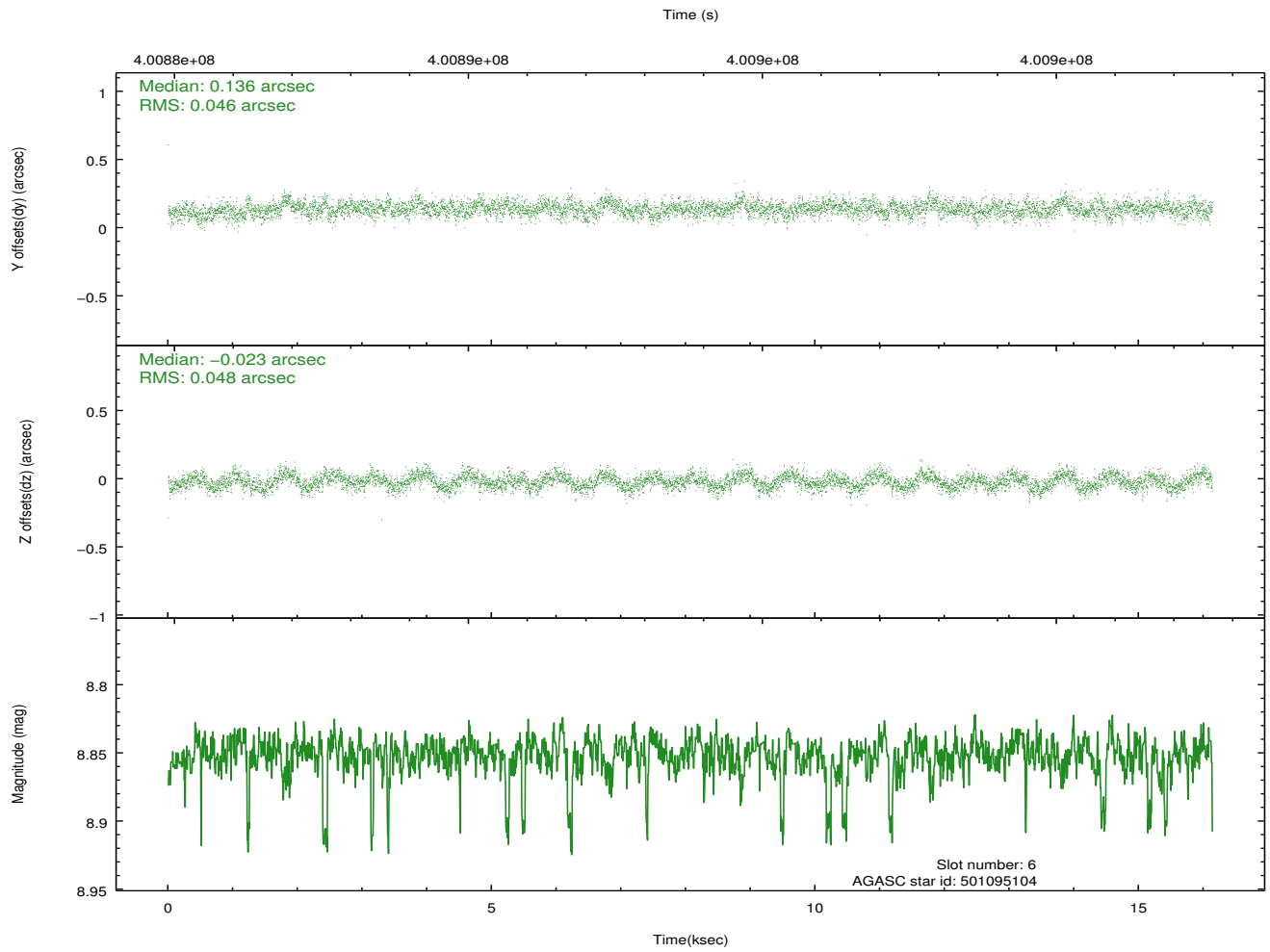
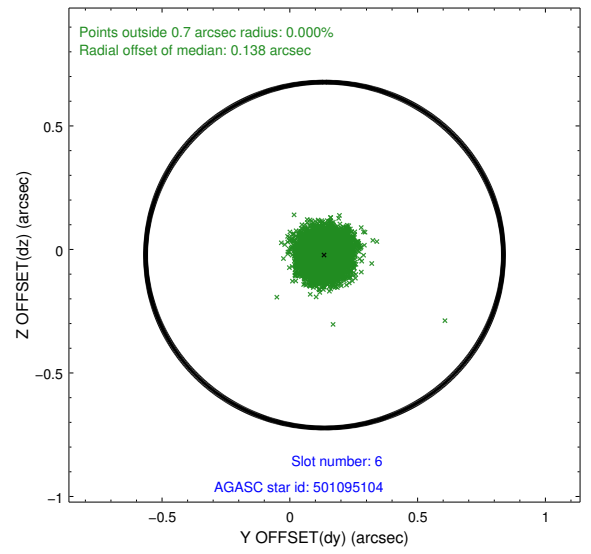
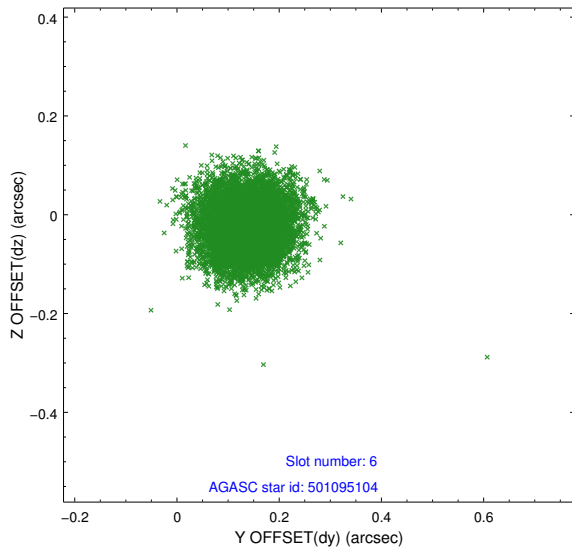
## 2.4.2 Slot 4



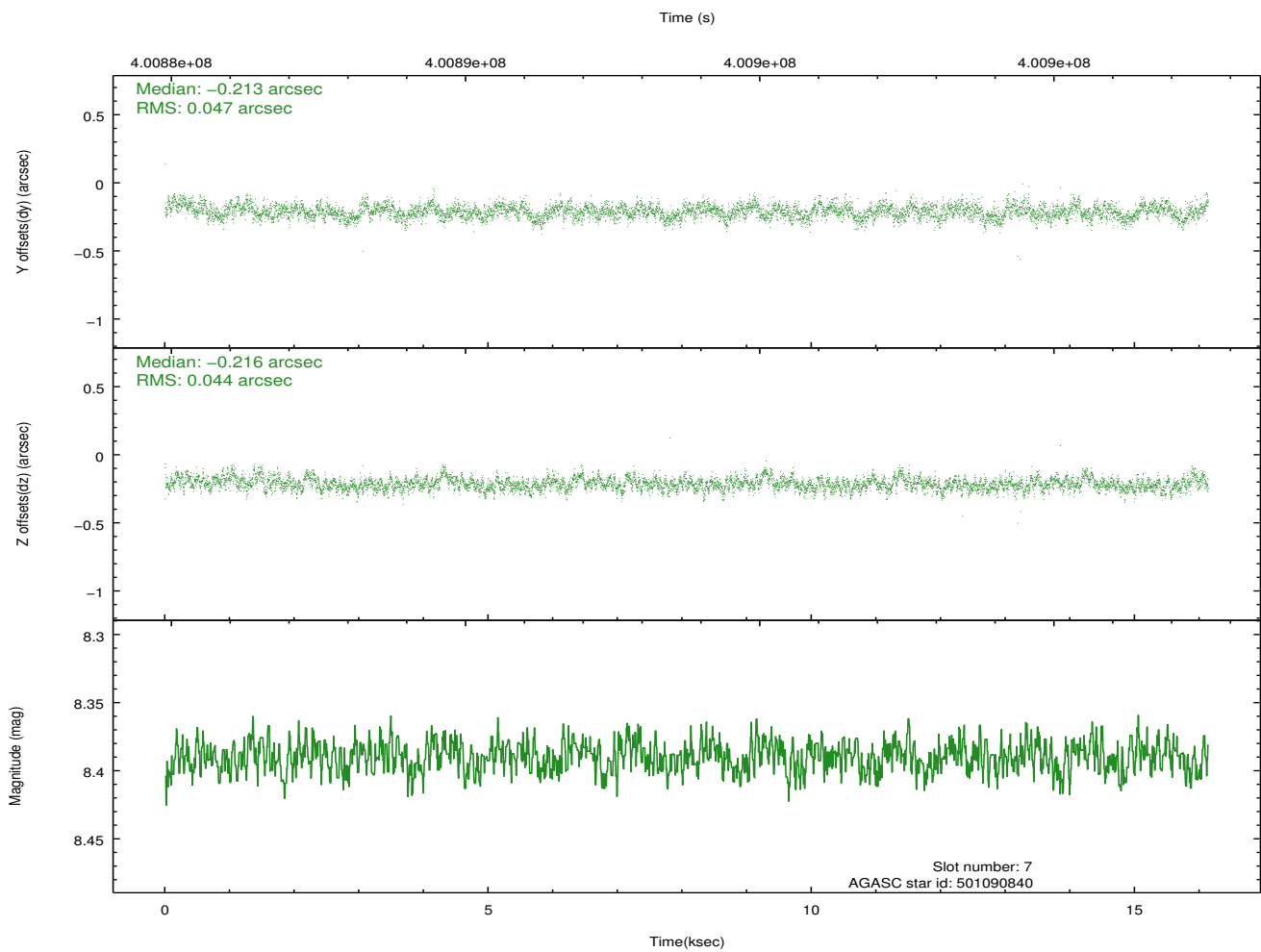
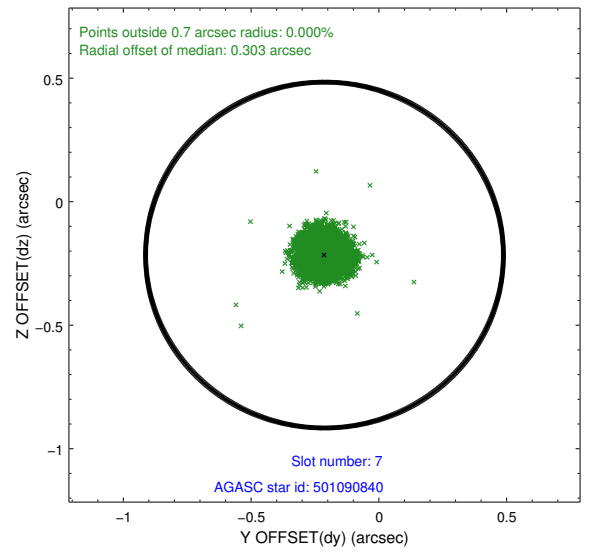
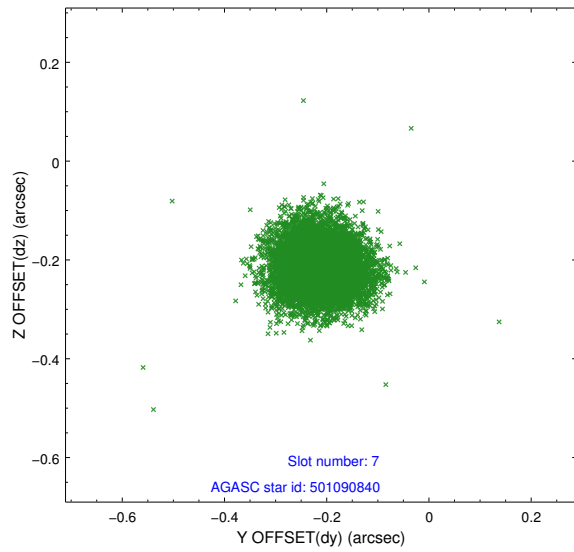
### 2.4.3 Slot 5



### 2.4.4 Slot 6

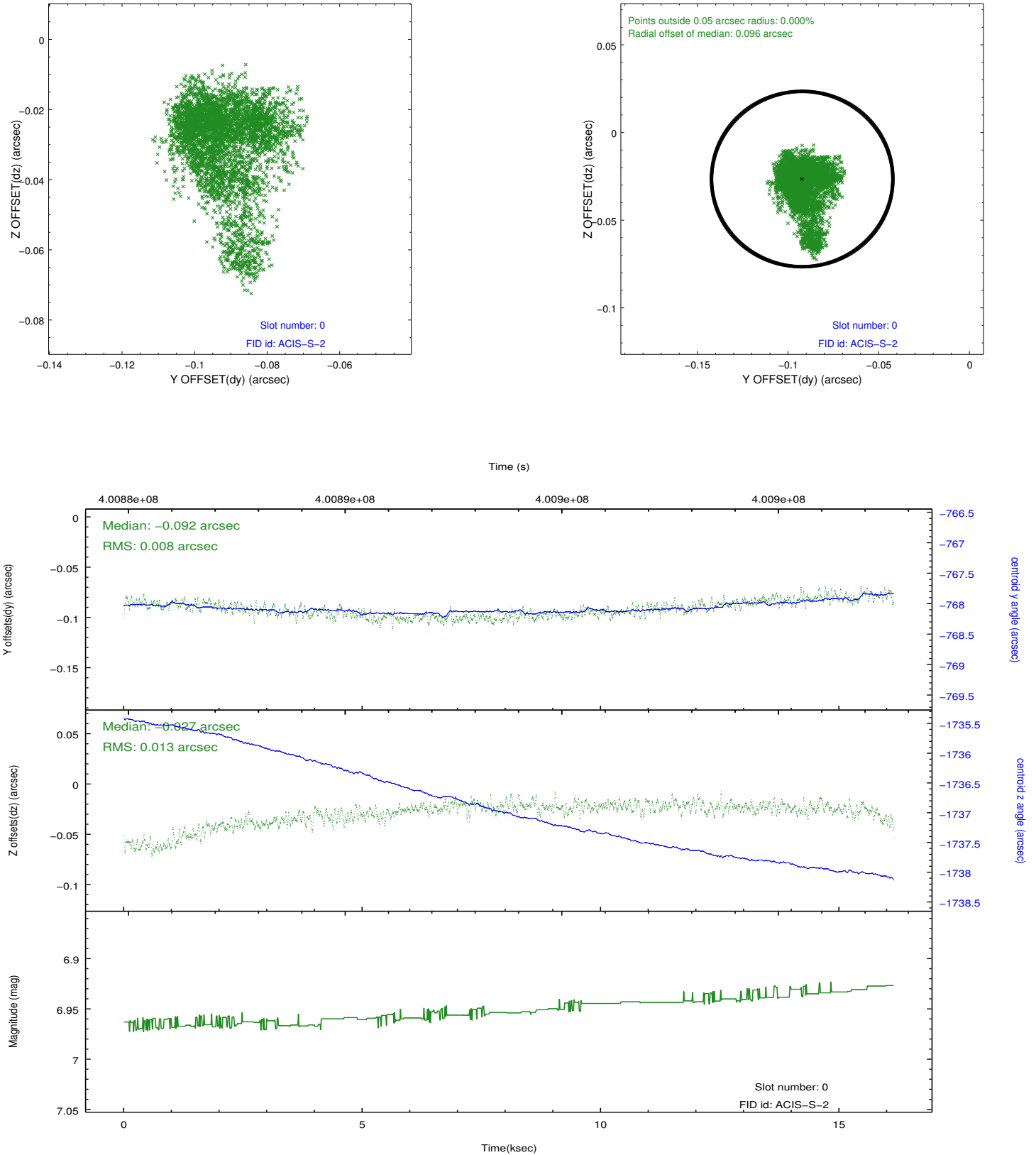


## 2.4.5 Slot 7

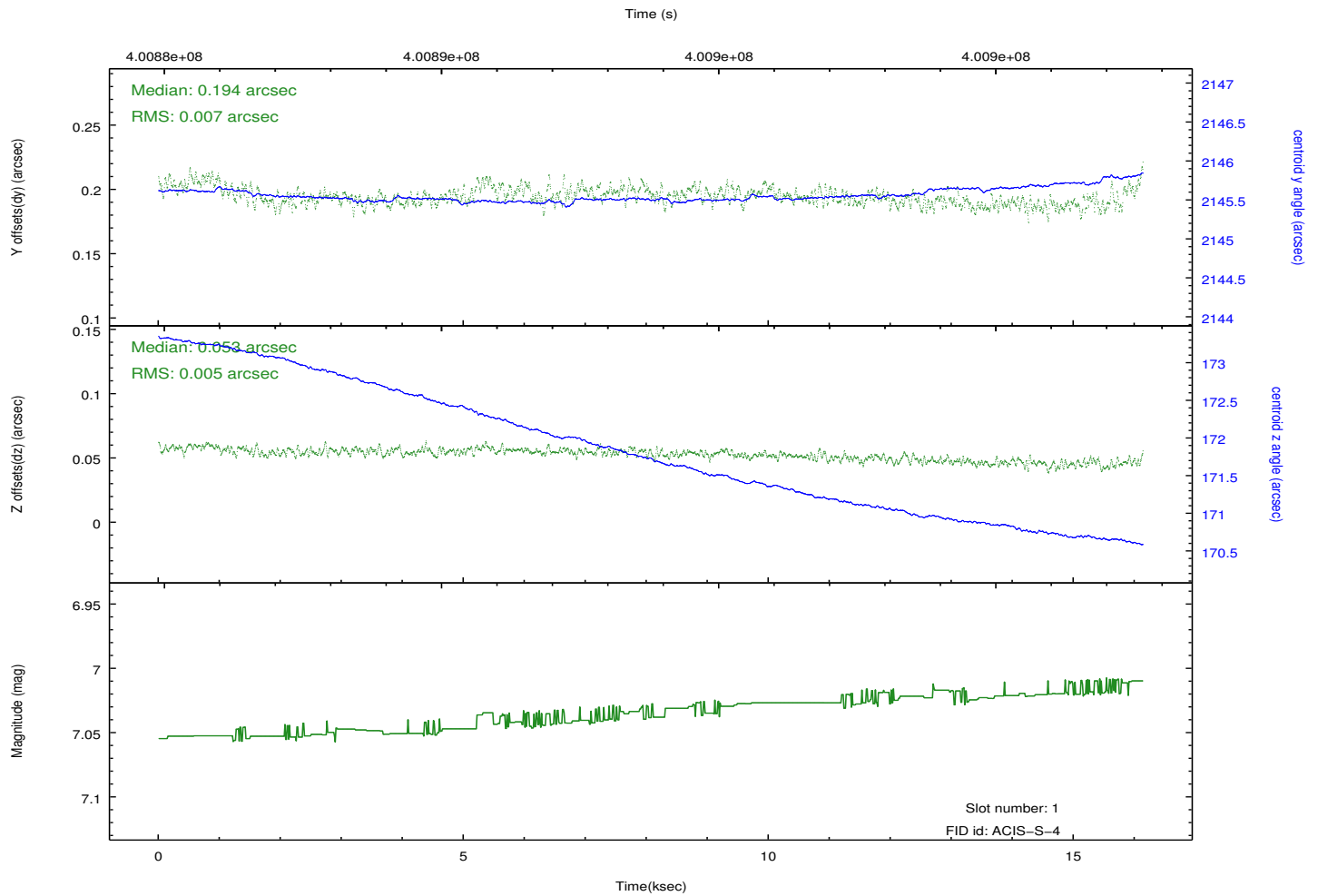
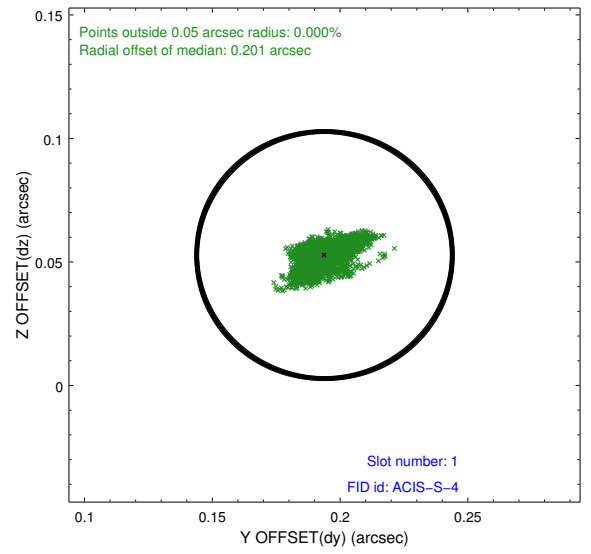
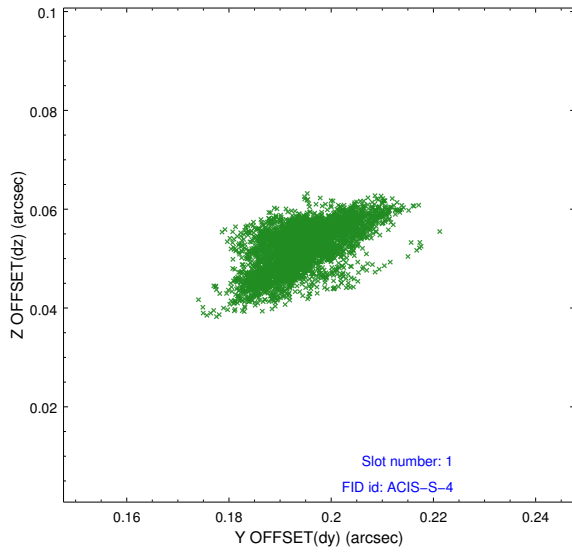


## 2.5 FID Slots

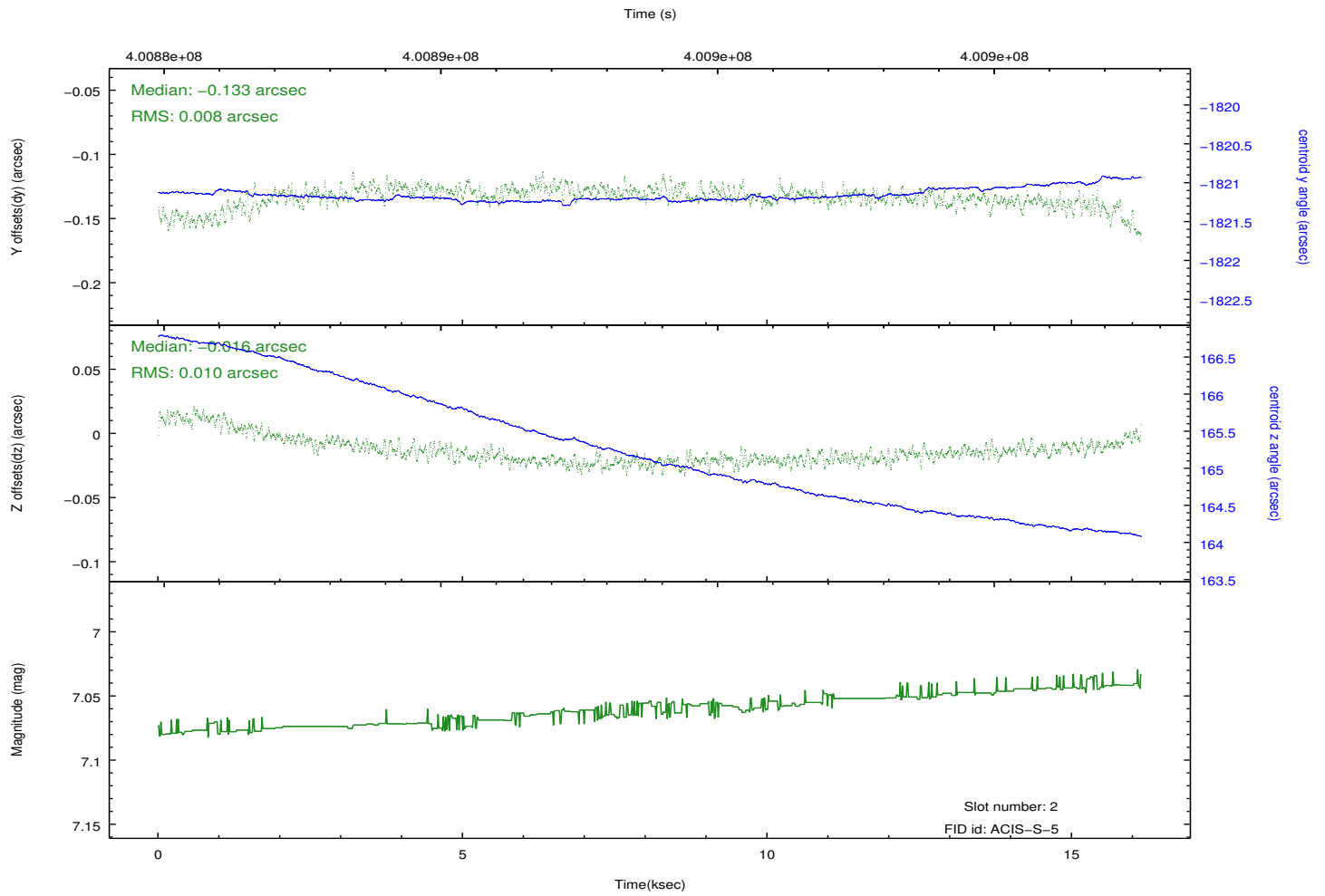
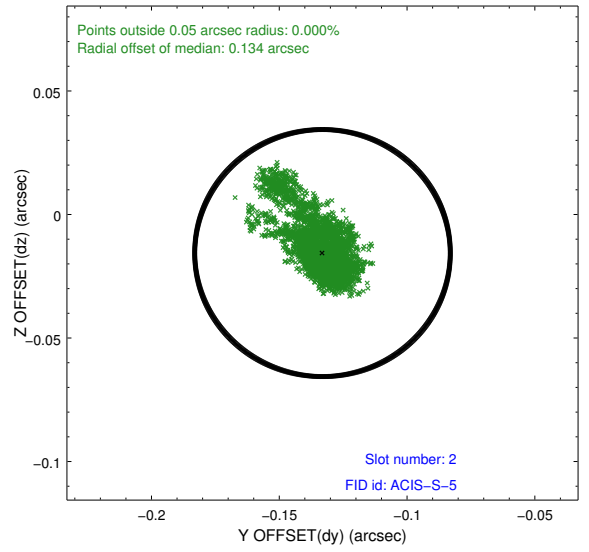
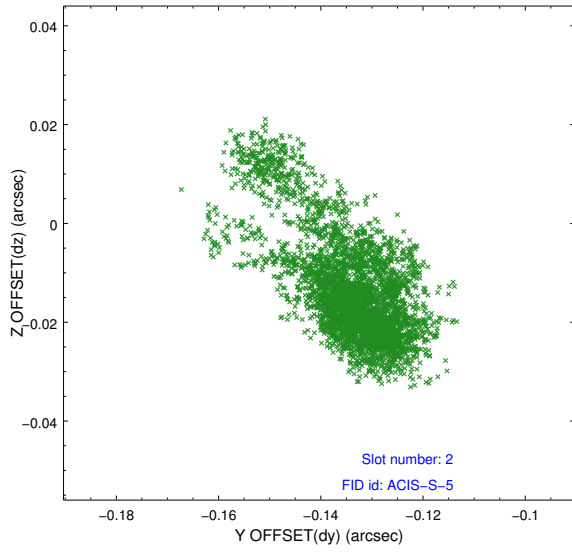
### 2.5.1 Slot 0



## 2.5.2 Slot 1



### 2.5.3 Slot 2



## **A Summary**

### **A.1 Status**

V&V Scientist	Jen Lauer
V&V Date (YYYY-MM-DD)	2012.07.11
V&V Edition	1
V&V Disposition and Status	OK
V&V Charge Time	15.772800121307

### **A.2 Comments**