

V&V Reference Report

L2 ASCDS Version : 8.4.5

Observation 11724 - L2 Version 2
Chandra X-Ray Center

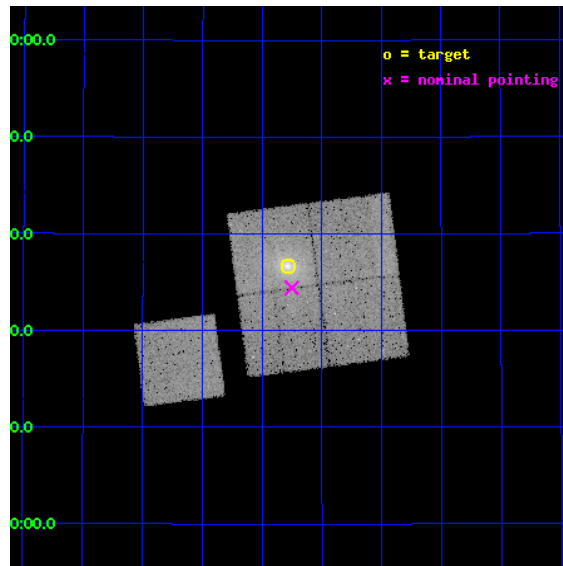
L2 Processing Date : Jun 30 2012

Contents

1	Front	2
2	OBI	3
2.1	OBI	3
2.1.1	Images	3
2.1.2	Bias	3
2.1.3	Parameters	4
2.1.4	Events	4
2.2	Compared Parameters	5
2.3	Aspect	6
2.4	Star Slots	9
2.4.1	Slot 3	9
2.4.2	Slot 4	10
2.4.3	Slot 5	11
2.4.4	Slot 6	12
2.4.5	Slot 7	13
2.5	FID Slots	14
2.5.1	Slot 0	14
2.5.2	Slot 1	15
2.5.3	Slot 2	16
A	Summary	17
A.1	Status	17
A.2	Comments	17

1 Front

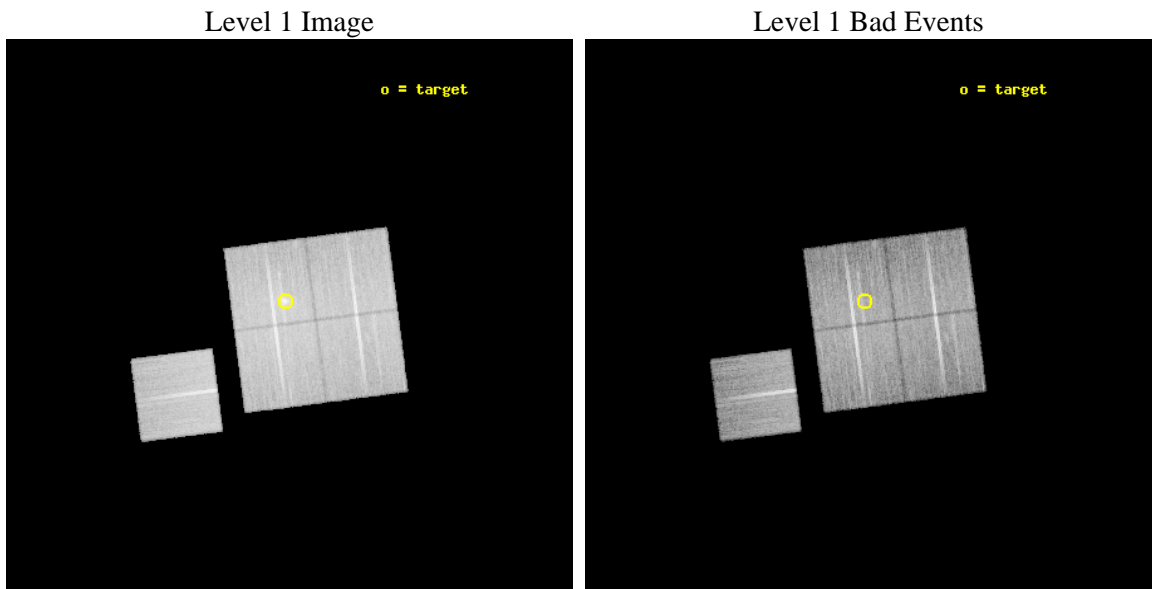
seq_num	800864	Sequence number
obs_id	11724	Observation id
title	Cosmology with a complete sample of 0.15	Proposal title
observer	Prof. Massimiliano Bonamente	Principal investigator
object	Abell 1423	Source name
dtcycle	0	
cycle	P	events from which exps? Prim/Second/Both
ra_targ	179.320833	Observer's specified target RA [deg]
dec_targ	33.610833	Observer's specified target Dec [deg]
ra_nom	179.31277262521	Nominal RA [deg]
dec_nom	33.573687198145	Nominal Dec [deg]
roll_nom	262.6019594247	Nominal Roll [deg]
revision	2	Processing version of data
ontime	26045.888834417	Sum of GTIs [s]
livetime	25705.580122091	Livetime [s]
ontime0	26042.624833703	Sum of GTIs [s]
ontime1	26045.806814134	Sum of GTIs [s]
ontime2	26052.129774868	Sum of GTIs [s]
ontime3	26045.888834417	Sum of GTIs [s]
ontime6	26045.724704266	Sum of GTIs [s]
l2events	105991	Number of level 2 events



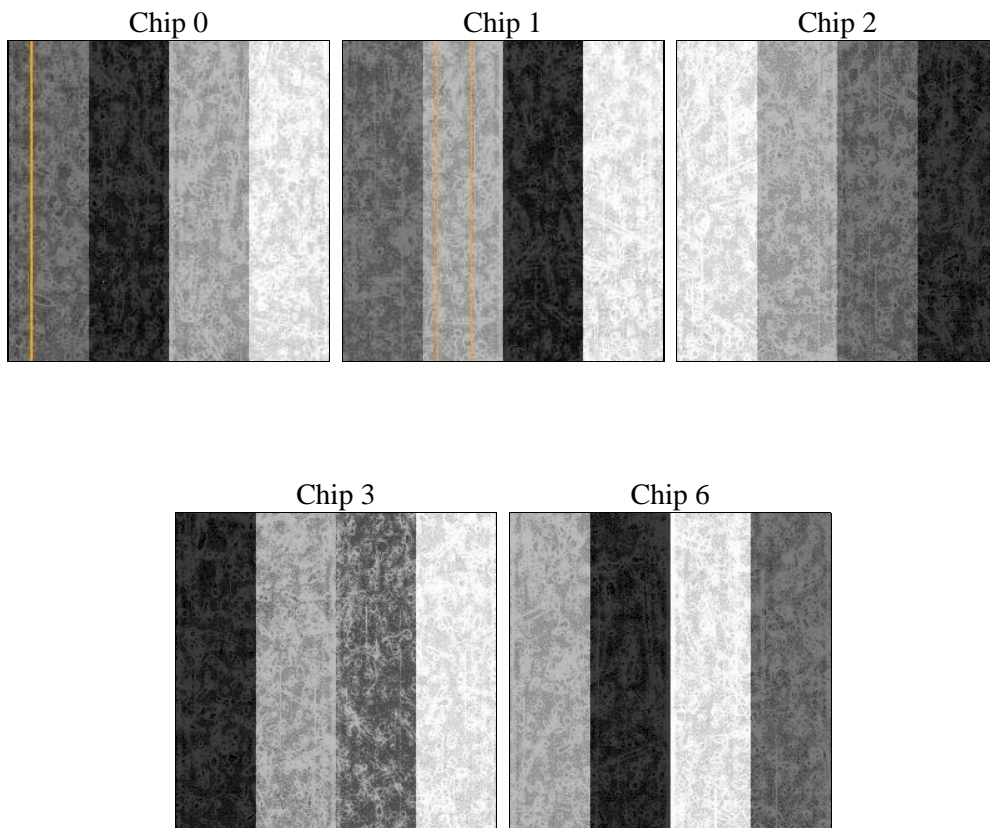
2 OBI

2.1 OBI

2.1.1 Images



2.1.2 Bias



2.1.3 Parameters

obi_num	0	Obi number	sched_exp_time	26000.000000	[s] Scheduled observation exposure time
ascdsver	8.4.5	Processing system revision	ontime	26045.888834417	Sum of GTIs [s]
caldsver	4.5.0	 	ontime0	26042.624833703	Sum of GTIs [s]
date	2012-06-30T01:20:39	Date and time of file creation	ontime1	26045.806814134	Sum of GTIs [s]
revision	2	Processing version of data	ontime2	26052.129774868	Sum of GTIs [s]
			ontime3	26045.888834417	Sum of GTIs [s]
			ontime6	26045.724704266	Sum of GTIs [s]
			l1events	983085	Number of level 1 events

2.1.4 Events

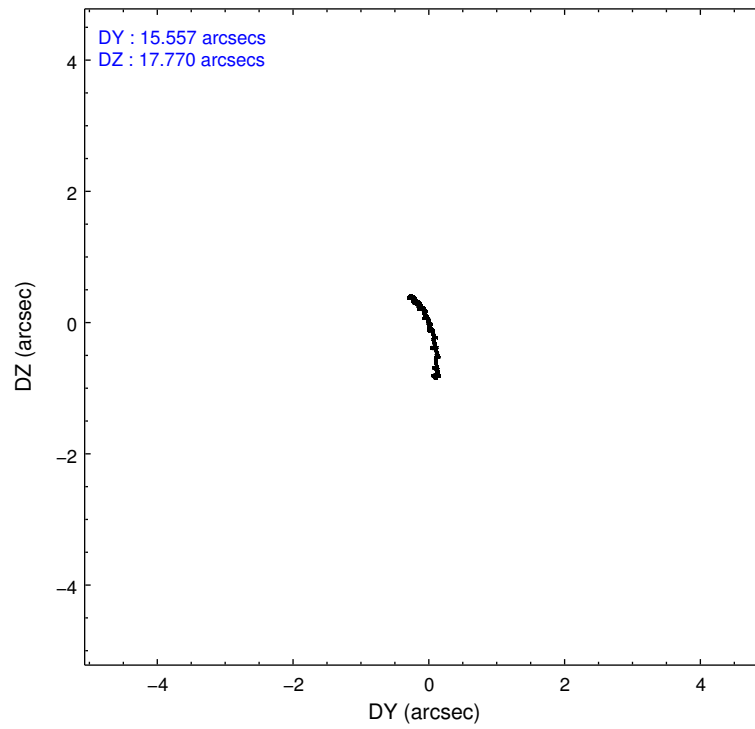
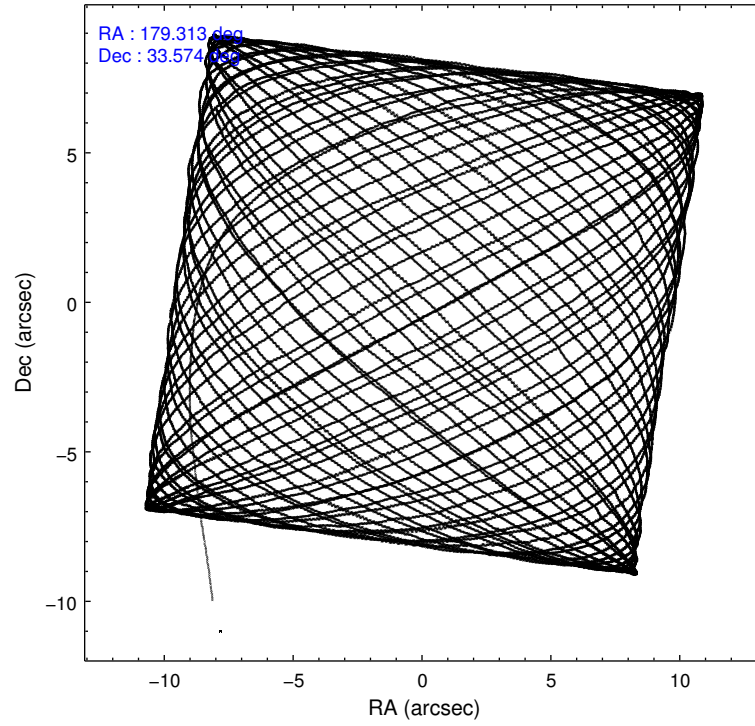
	ccd 0	ccd 1	ccd 2	ccd 3	ccd 6
level 1 events	183983	190837	202240	208713	197312
rejected events	162028	166508	180241	174480	175488
rejected %	88%	87%	89%	83%	88%

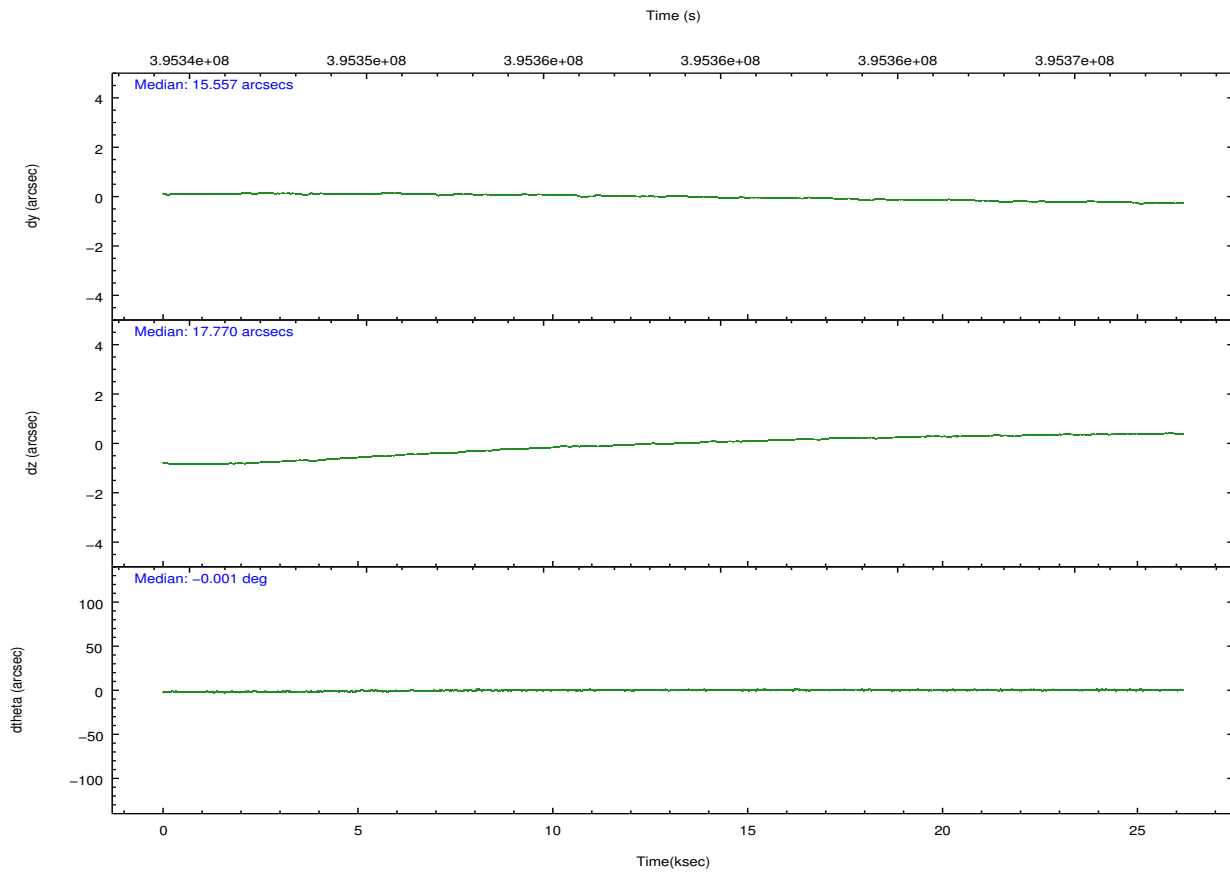
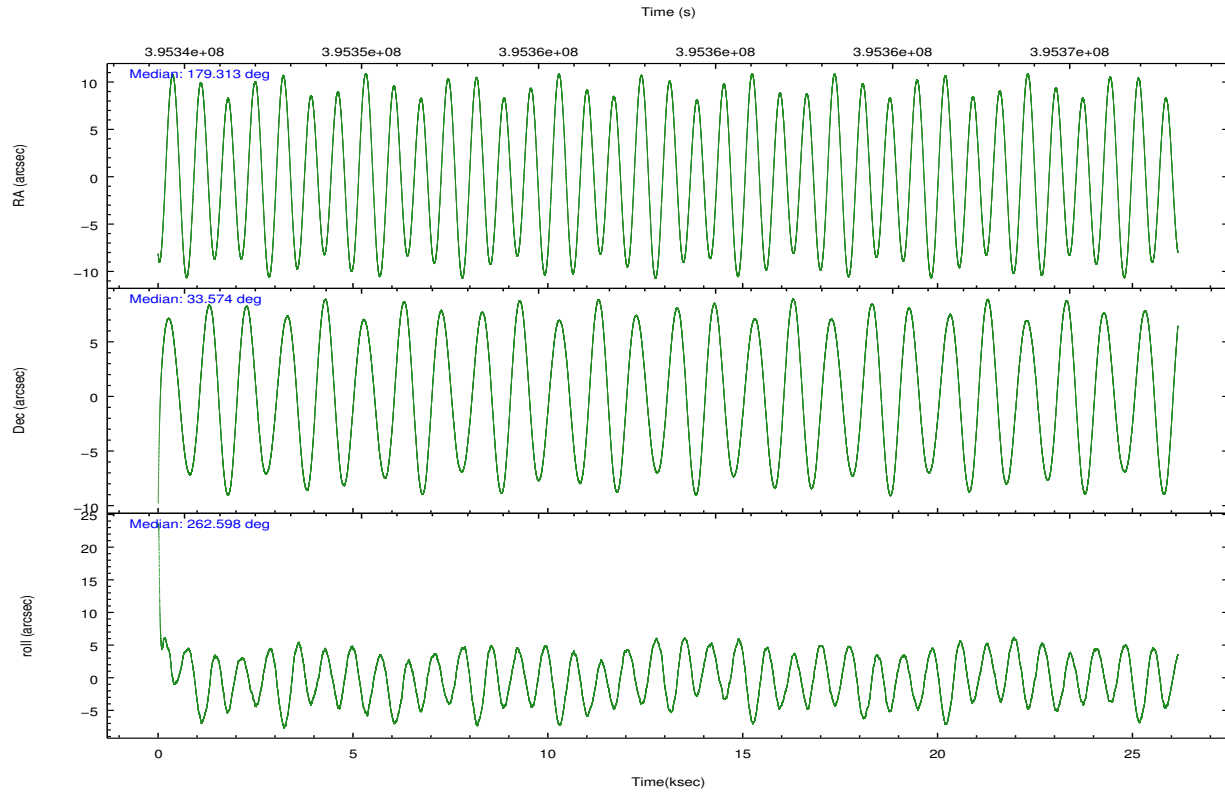
	ccd 0	ccd 1	ccd 2	ccd 3	ccd 6
grade 0 events	7717	8806	8339	18546	7571
	4%	4%	4%	8%	3%
grade 1 events	137	128	131	201	105
	0%	0%	0%	0%	0%
grade 2 events	5383	5665	5201	5857	4914
	2%	2%	2%	2%	2%
grade 3 events	2387	2545	2140	2655	2319
	1%	1%	1%	1%	1%
grade 4 events	2247	2404	2217	2629	2358
	1%	1%	1%	1%	1%
grade 5 events	7919	8616	7496	9119	8753
	4%	4%	3%	4%	4%
grade 6 events	4226	4916	4106	4557	4672
	2%	2%	2%	2%	2%
grade 7 events	153967	157757	172610	165149	166620
	83%	82%	85%	79%	84%

2.2 Compared Parameters

Parameter	Planned	Actual	Parameter	Planned	Actual
Instrument	ACIS	ACIS	Obspar format version number	7	7
Detector	ACIS-01236	ACIS-01236	Obspar file type	PREDICTED	ACTUAL
Grating	NONE	NONE	Obspar update status	NONE	UPDATED
Data mode	VFAINT	VFAINT	Number of optional ACIS chips dropped	0	0
Observation mode	POINTING	POINTING	On-chip summing requested	N	N
[deg] Pointing RA	179.299961	179.3127726252104	Subarray requested	NONE	NONE
[deg] Pointing Dec	33.599031	33.57368719814452	Alternating exposures requested	N	N
[deg] Pointing Roll	262.400352	262.6019594246951	[s] Primary exposure time	0.000000	3.1
[mm] SIM focus pos	-0.782348	-0.7809083437167272			
[mm] SIM defocus	0	0.001439871863259334			
[mm] SIM translation stage pos	-227.592463	-227.5933067819097			
[mm] SIM translation stage offset	-6	-5.999146221020027			
[s] Observation start time (MET)	395345735.184000	395344468.32042			
Observation start date	2010-07-12T18:14:29	2010-07-12T17:54:28			
[s] Observation end time (MET)	395371735.184000	395372709.12187			
Observation end date	2010-07-13T01:27:49	2010-07-13T01:45:09			
Read mode	TIMED	TIMED			

2.3 Aspect



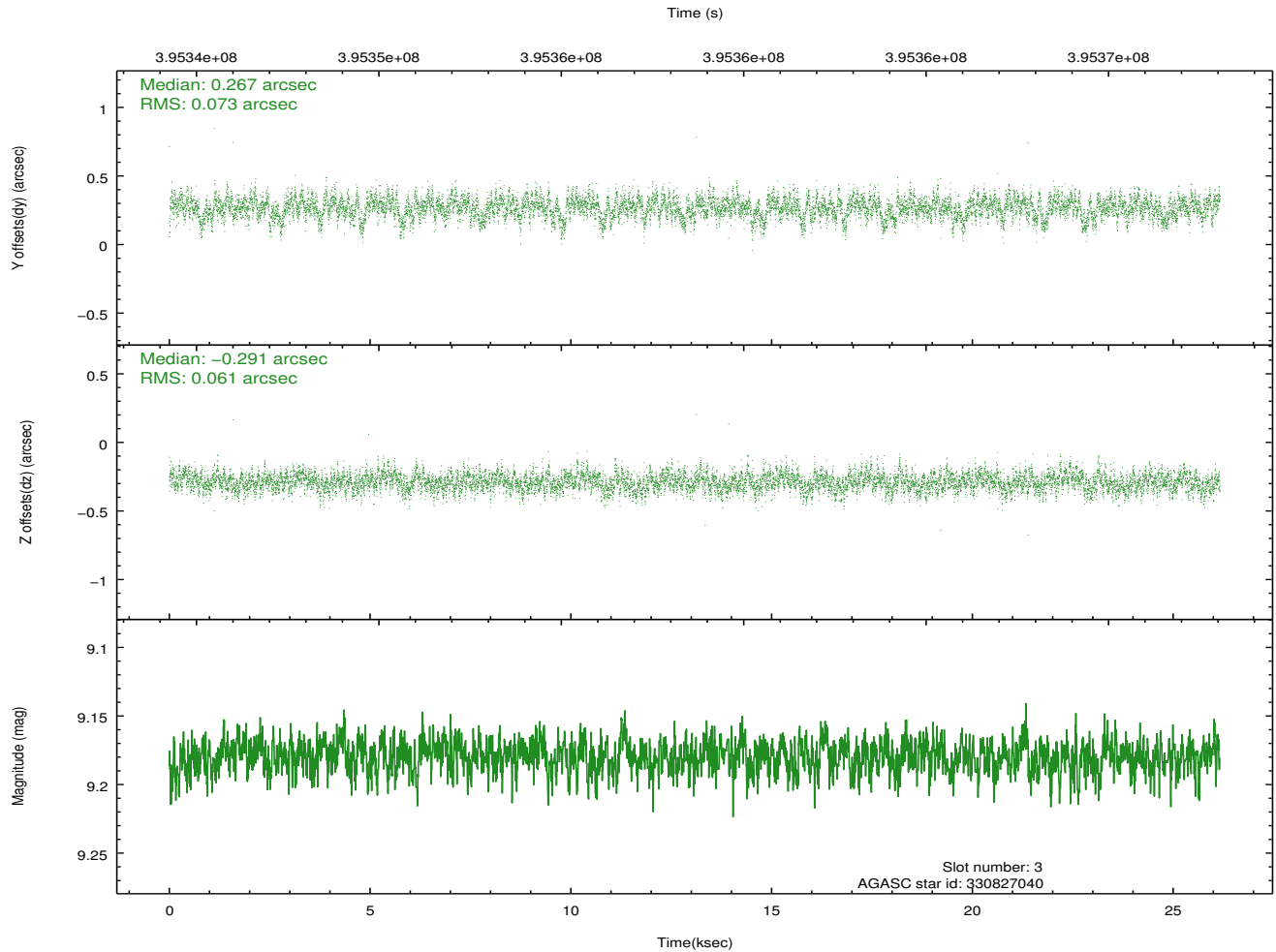
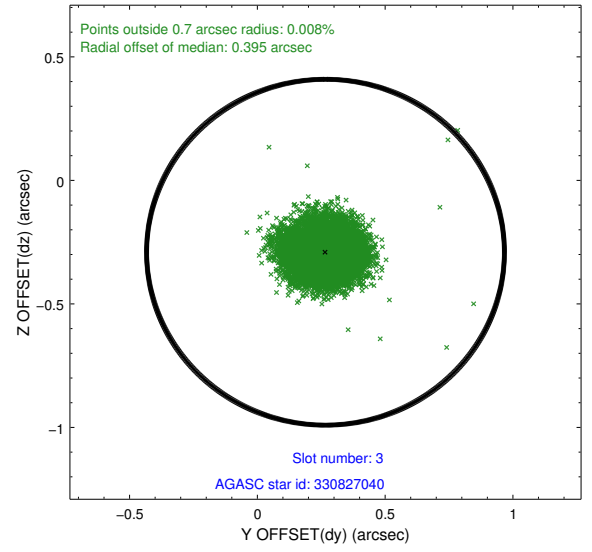
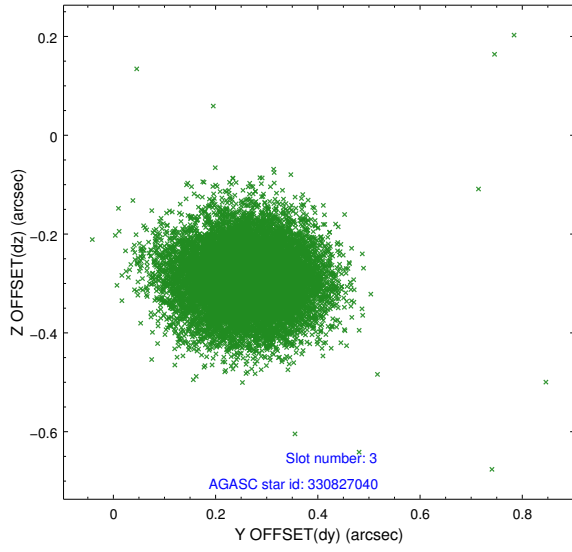


Slot Statistics

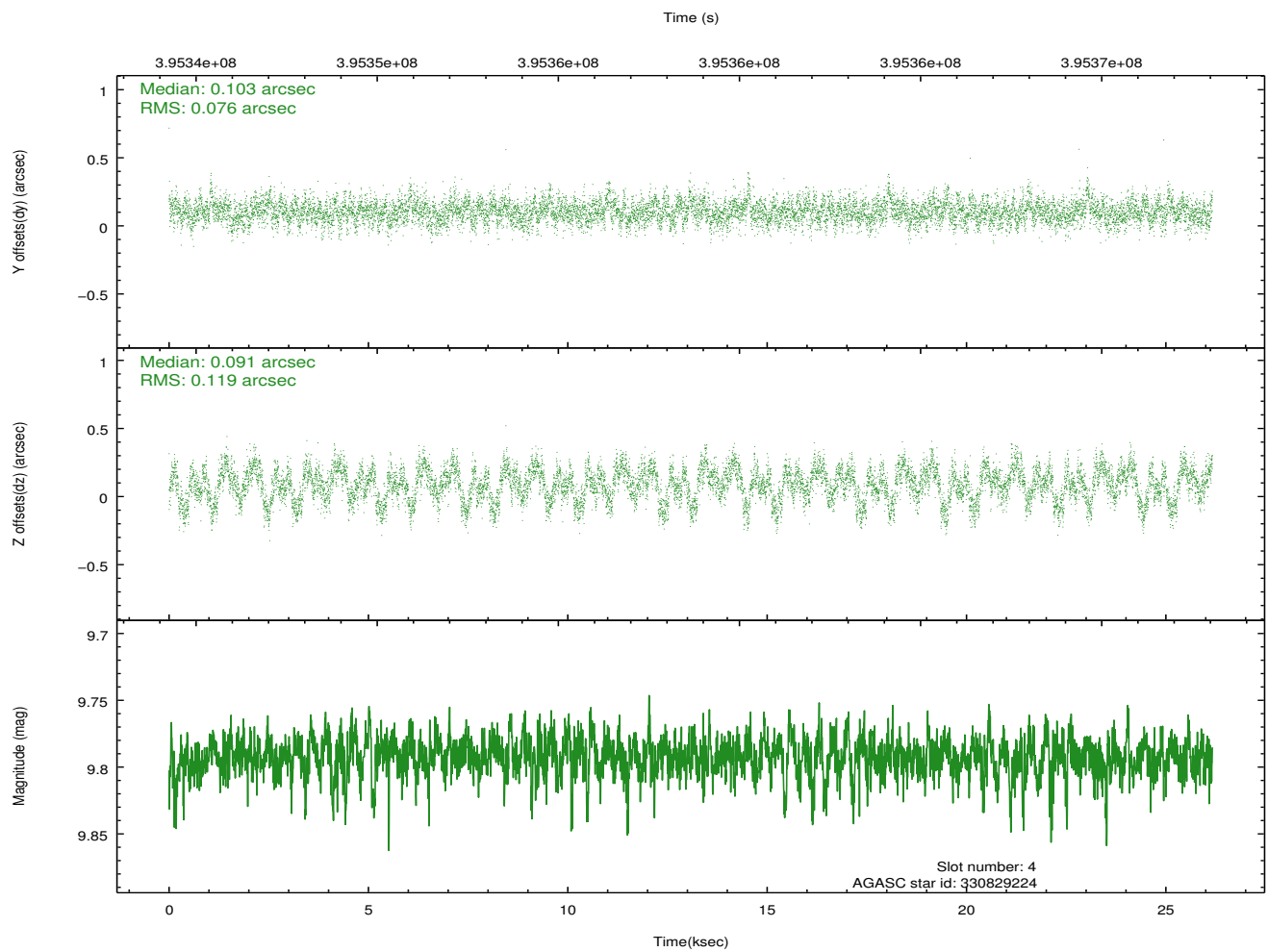
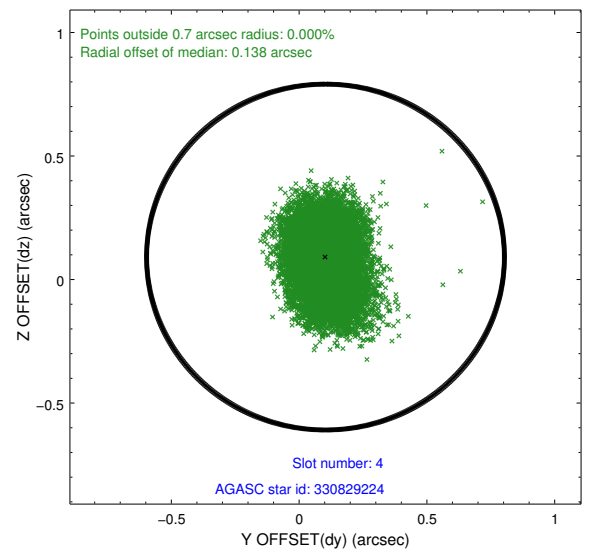
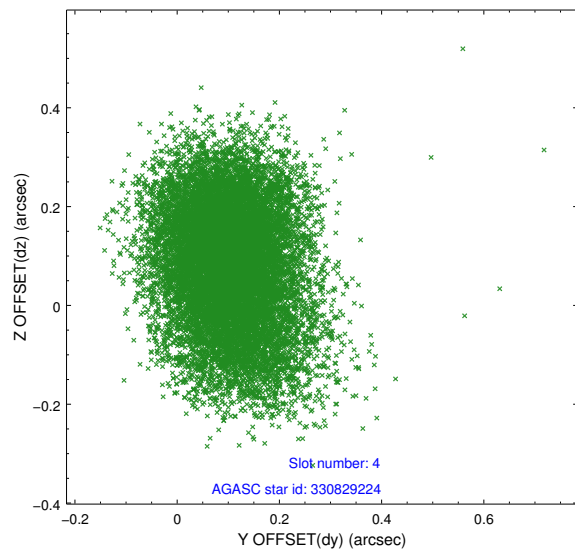
slot	status	id	mag	n_pts	med_dy	med_dz	dr1	dr2	ra	dec	mean_y	mean_z
0	FID	ACIS-I-1	7.03	6382	0.121	-0.076	0.010	0.015	0.000000	0.000000	923.91	-964.56
1	FID	ACIS-I-5	7.00	6381	-0.271	0.105	0.008	0.014	0.000000	0.000000	-1824.51	933.06
2	FID	ACIS-I-6	7.01	6382	0.059	0.041	0.013	0.022	0.000000	0.000000	389.30	1577.61
3	GUIDE	330827040	9.18	12752	0.267	-0.291	0.101	0.163	179.047385	33.198375	1529.98	-563.58
4	GUIDE	330829224	9.79	12741	0.103	0.091	0.149	0.247	179.312387	33.206280	1397.28	225.10
5	GUIDE	330833592	8.59	12763	0.017	-0.053	0.076	0.120	179.287446	33.353459	881.79	79.58
6	GUIDE	331104744	6.85	12763	-0.263	0.134	0.072	0.124	179.989068	34.034752	-1833.90	1829.16
7	GUIDE	331106016	8.90	12734	-0.126	0.119	0.099	0.161	179.949729	33.960595	-1552.90	1750.67

2.4 Star Slots

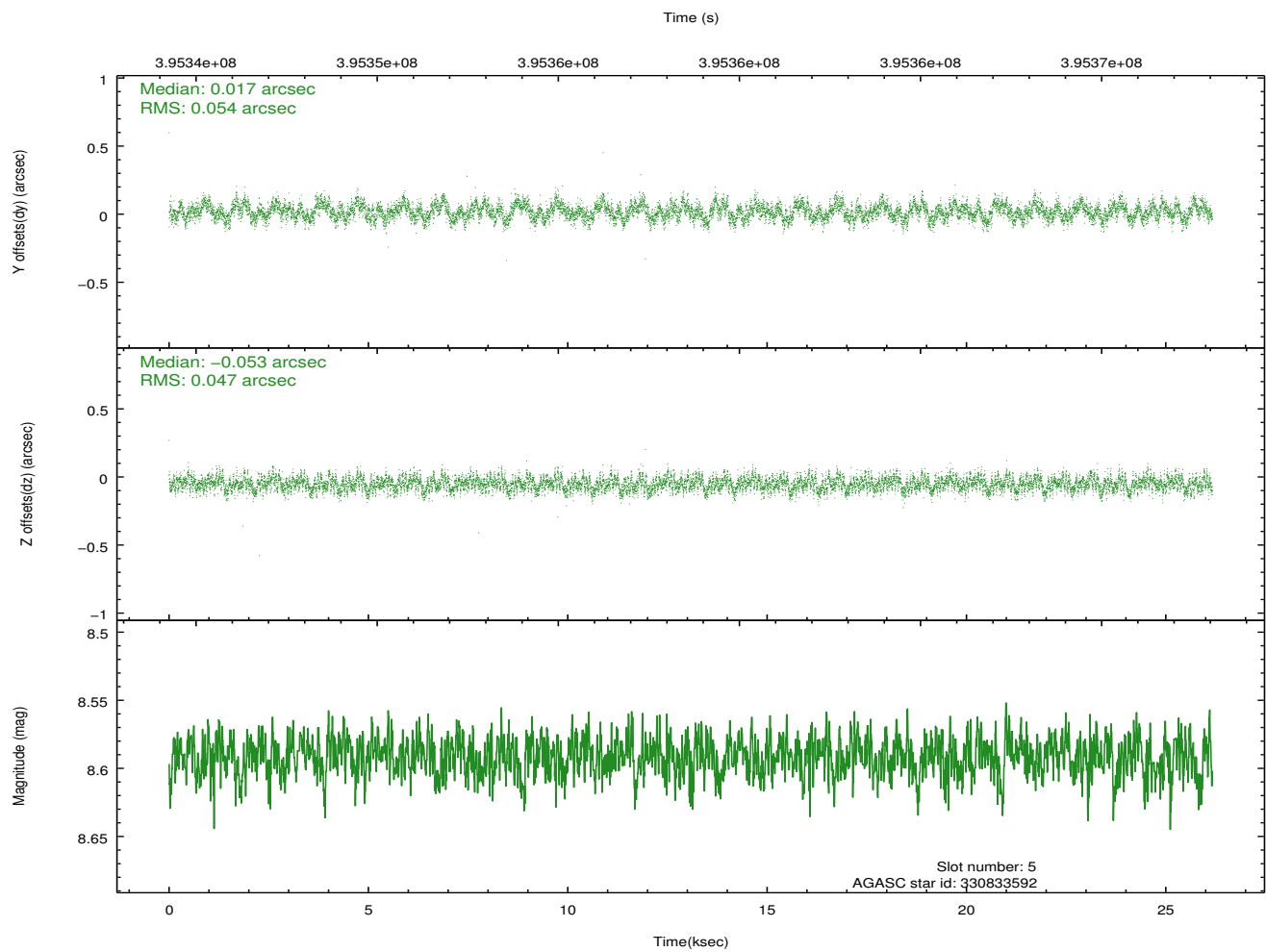
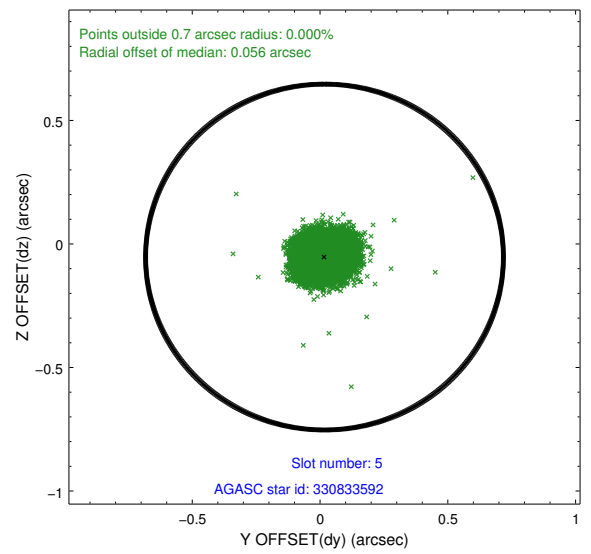
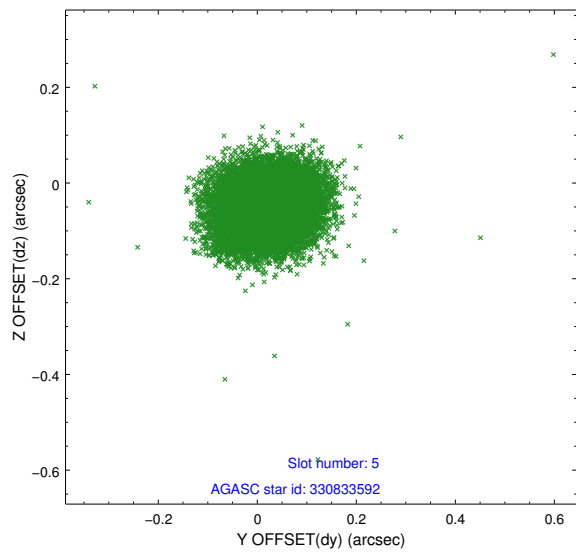
2.4.1 Slot 3



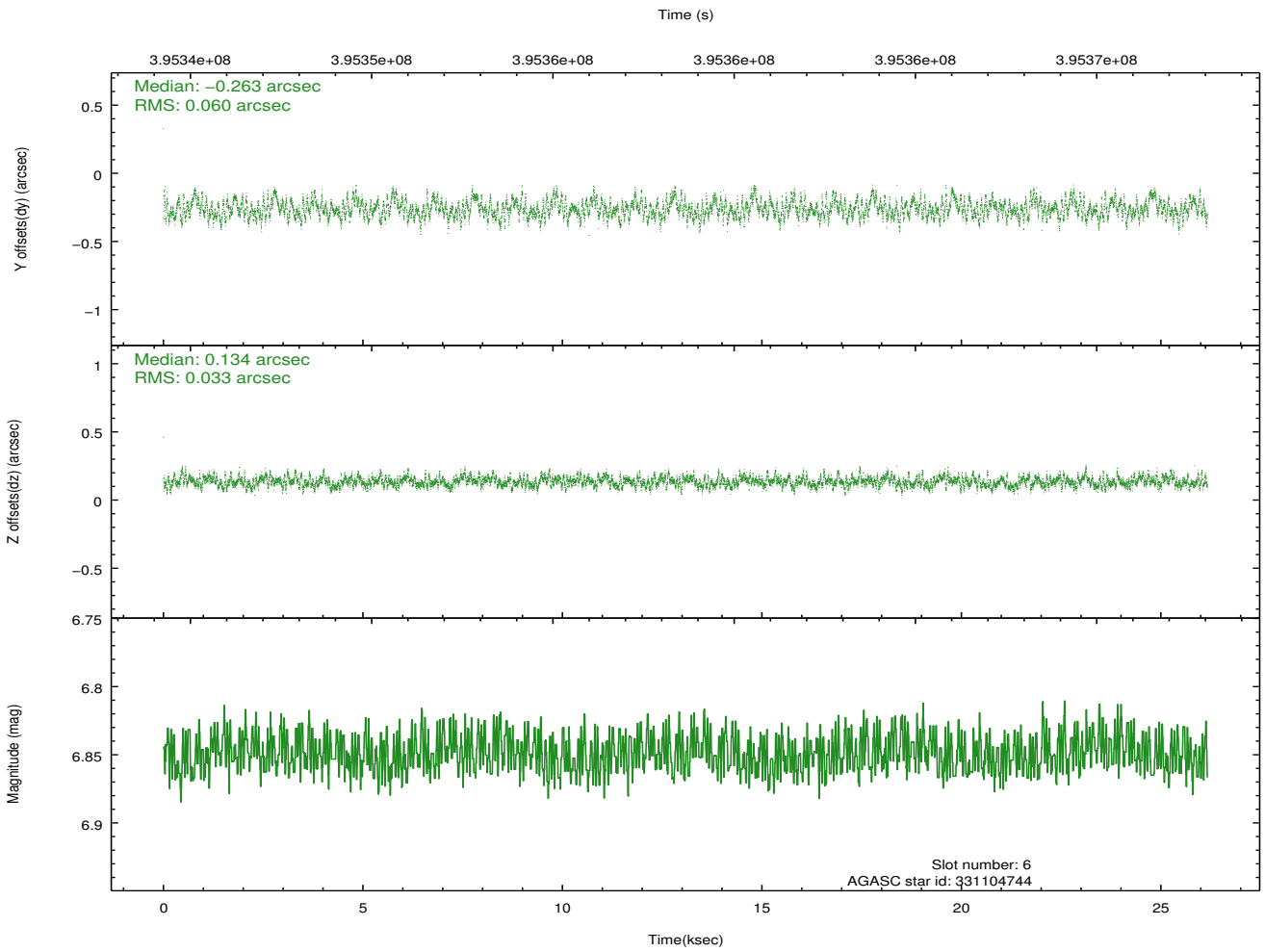
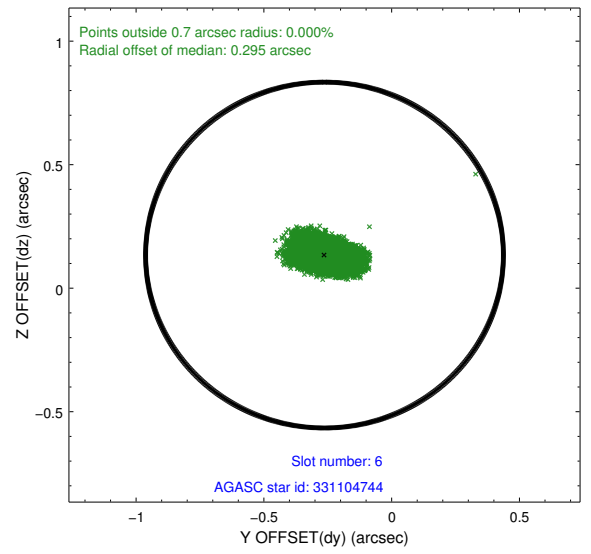
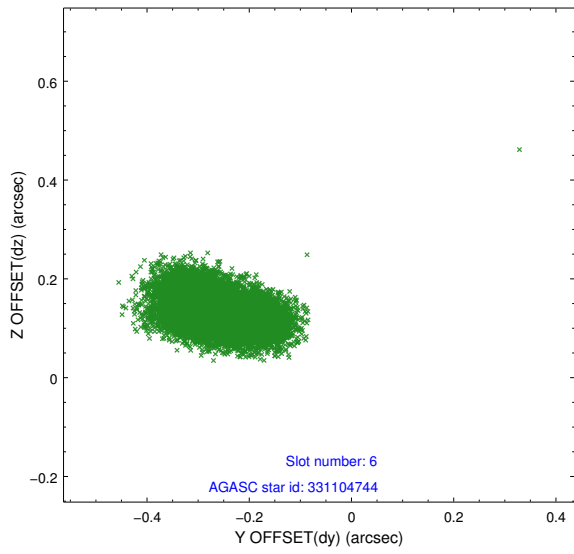
2.4.2 Slot 4



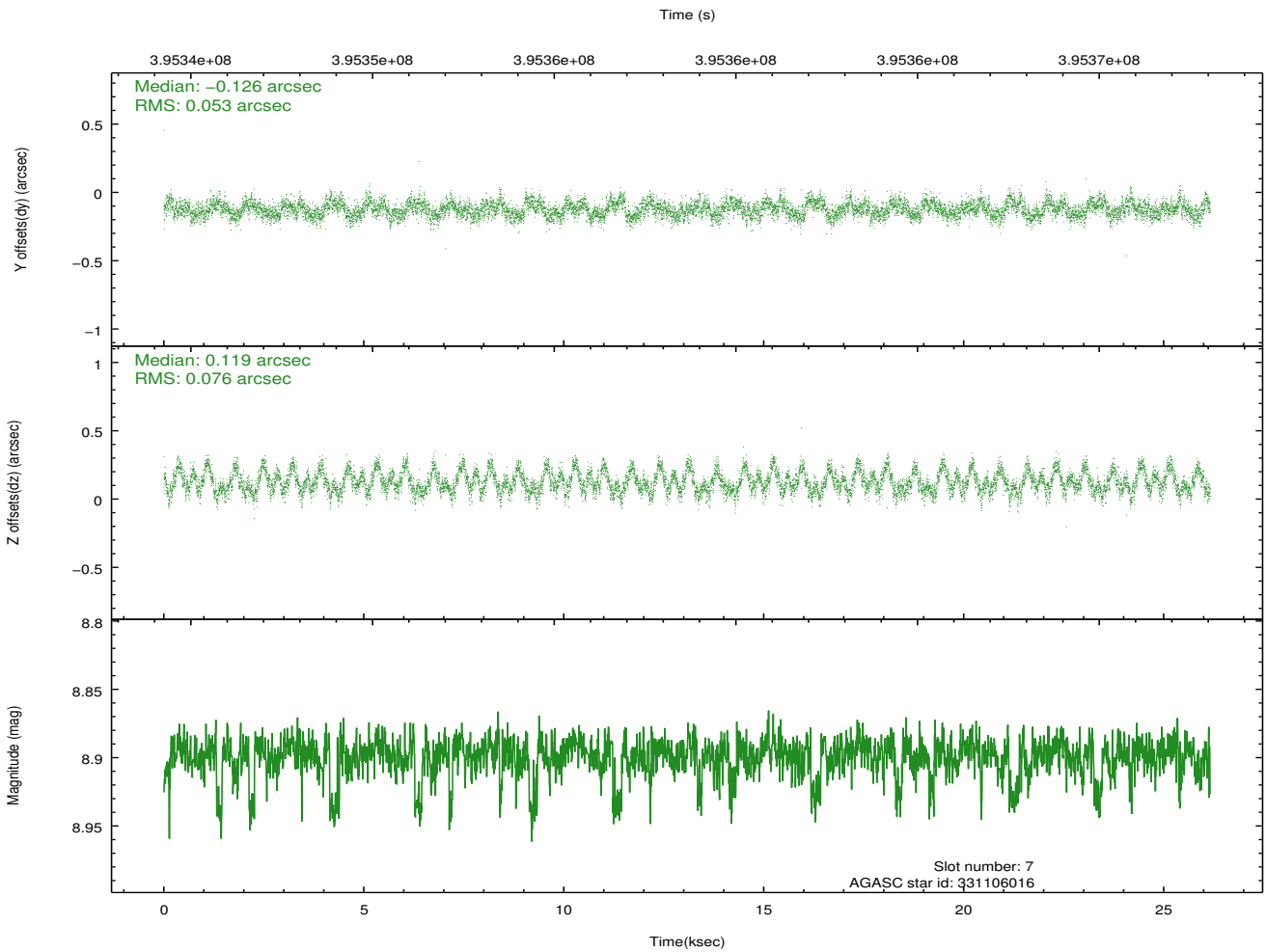
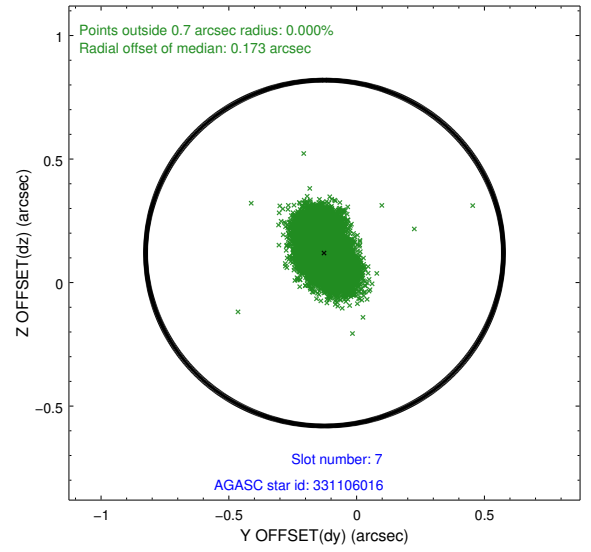
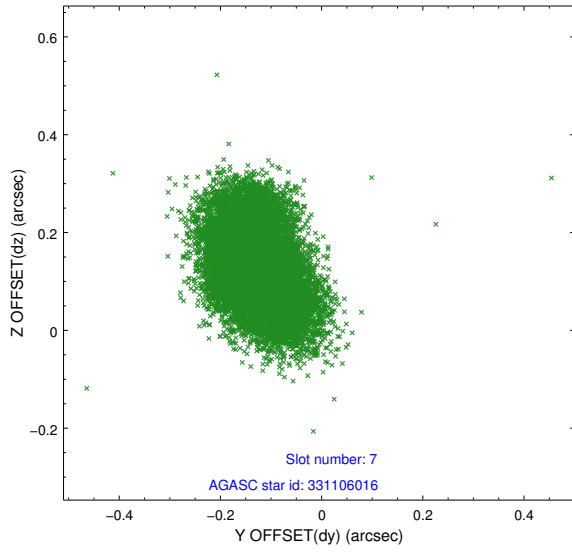
2.4.3 Slot 5



2.4.4 Slot 6

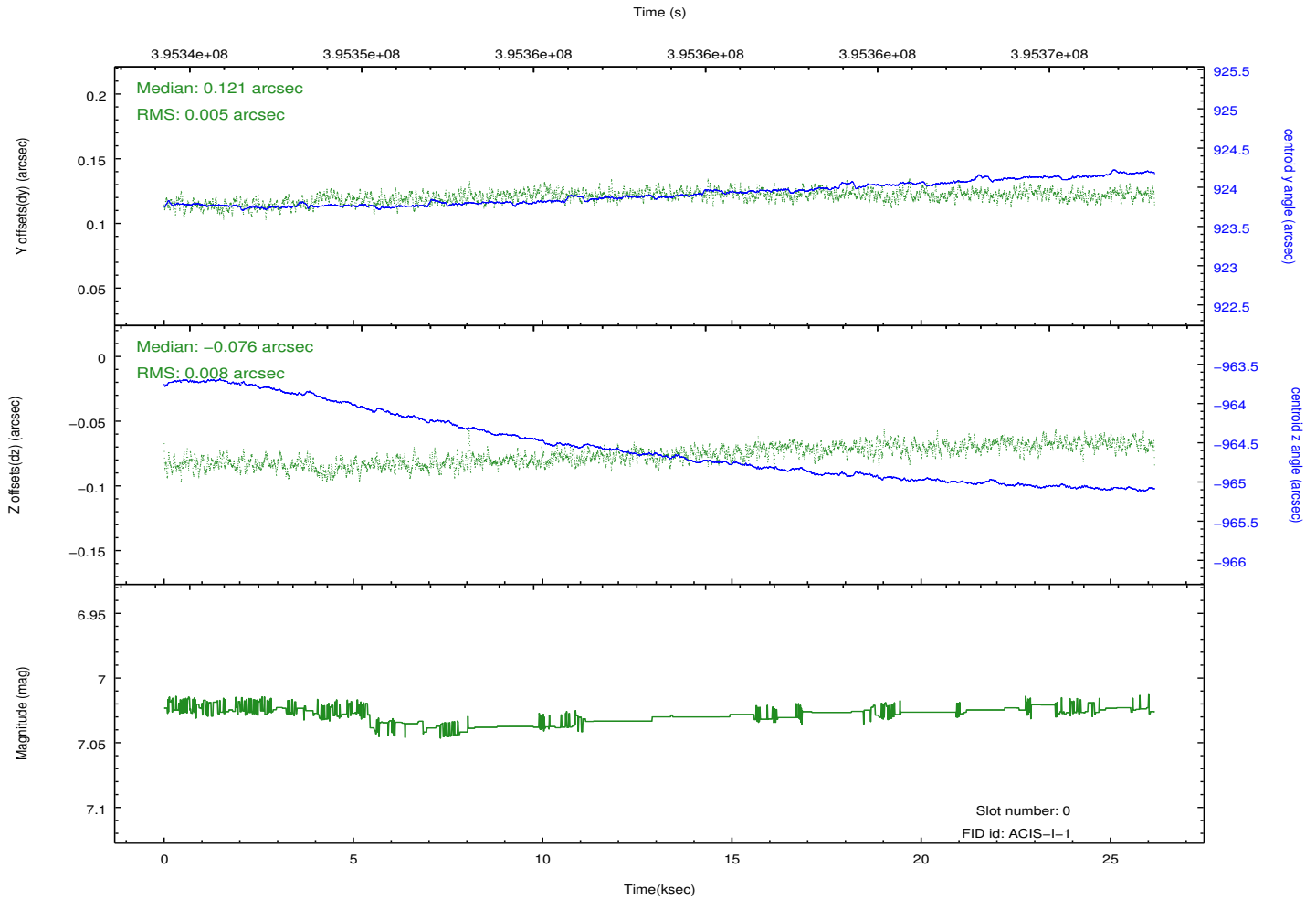
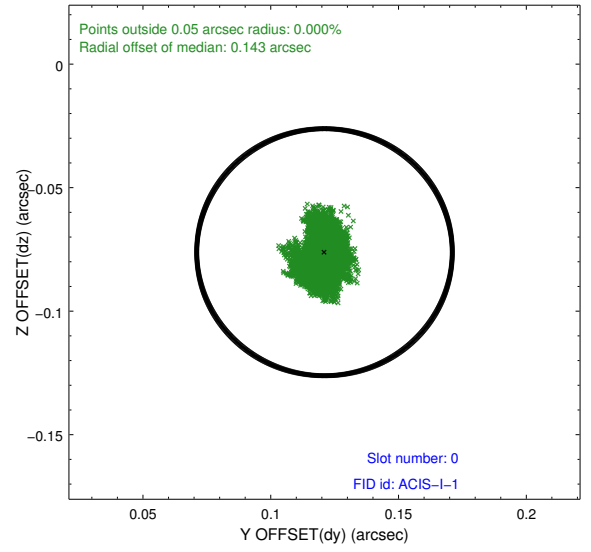
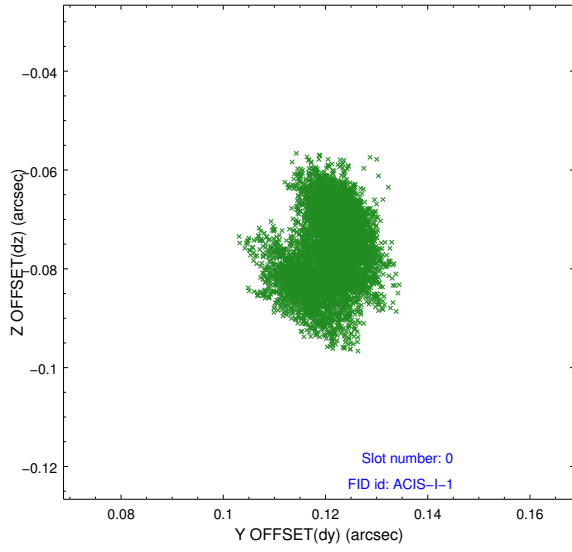


2.4.5 Slot 7

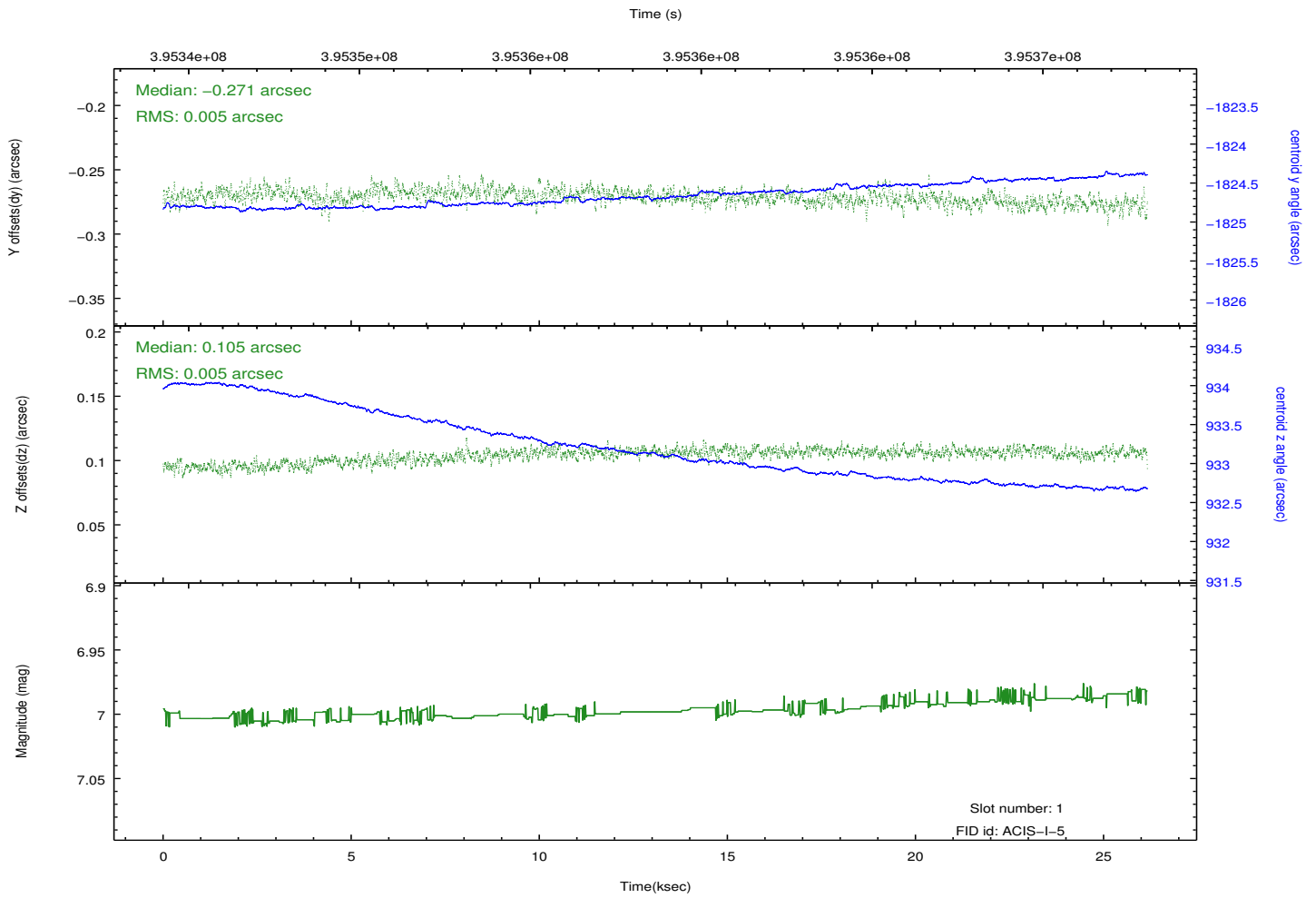
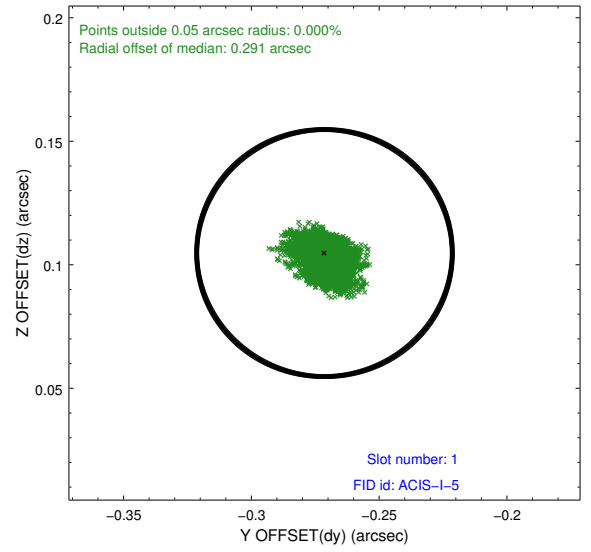
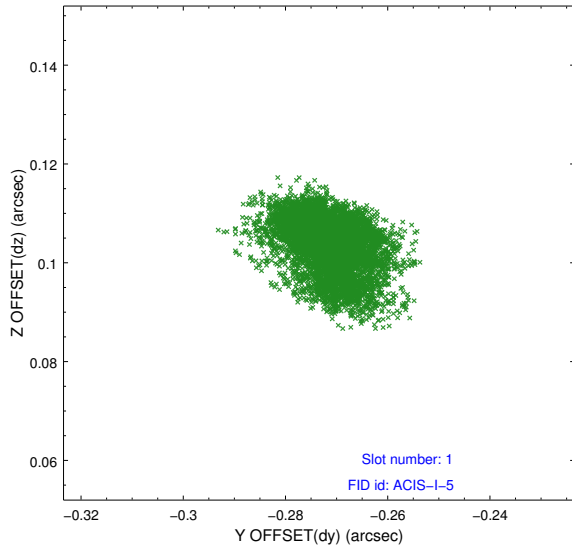


2.5 FID Slots

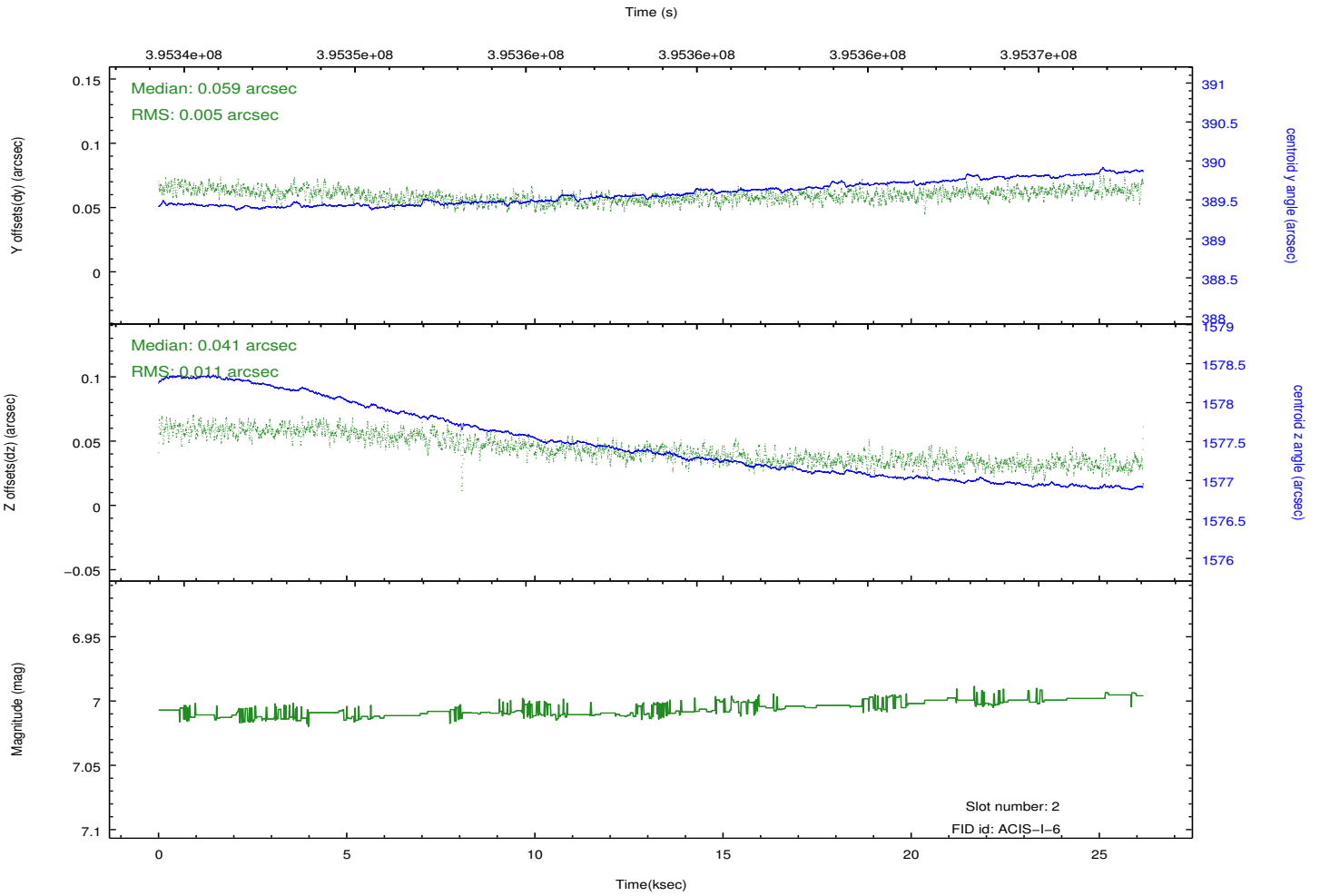
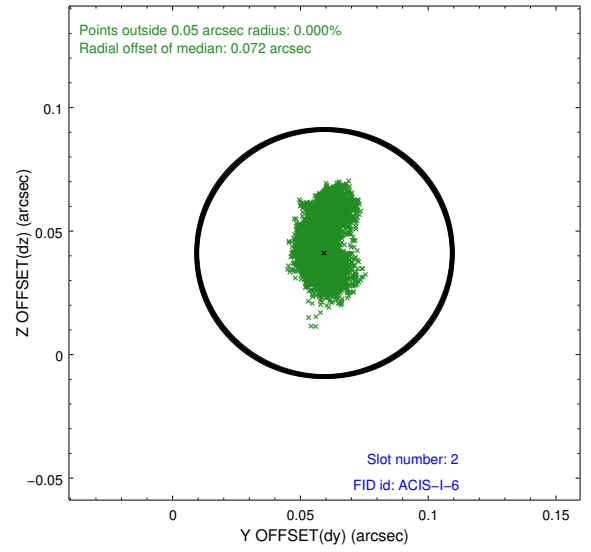
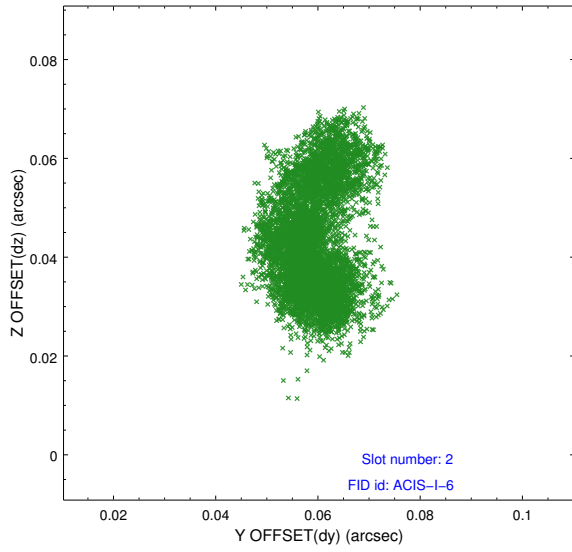
2.5.1 Slot 0



2.5.2 Slot 1



2.5.3 Slot 2



A Summary

A.1 Status

V&V Scientist	Jen Lauer
V&V Date (YYYY-MM-DD)	2012.07.09
V&V Edition	1
V&V Disposition and Status	OK
V&V Charge Time	26.045888839722

A.2 Comments