

# V&V Reference Report

## L2 ASCDS Version : 8.4.5

Observation 11734 - L2 Version 2  
Chandra X-Ray Center

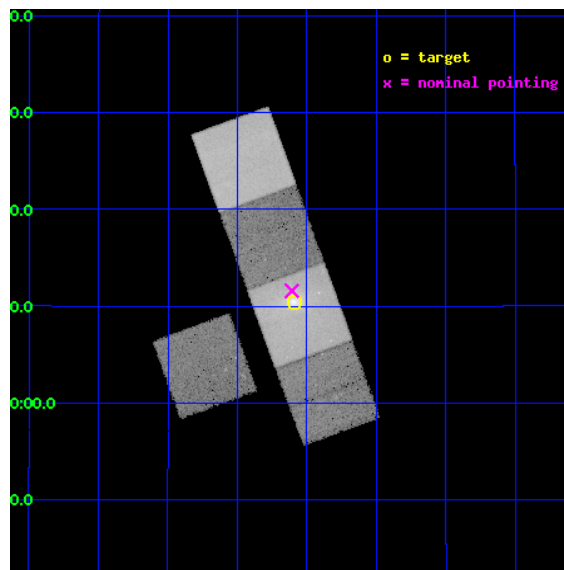
L2 Processing Date : Jun 19 2012

## Contents

<b>1</b>	<b>Front</b>	<b>2</b>
<b>2</b>	<b>OBI</b>	<b>3</b>
2.1	OBI . . . . .	3
2.1.1	Images . . . . .	3
2.1.2	Bias . . . . .	3
2.1.3	Parameters . . . . .	4
2.1.4	Events . . . . .	4
2.2	Compared Parameters . . . . .	5
2.3	Aspect . . . . .	6
2.4	Star Slots . . . . .	9
2.4.1	Slot 3 . . . . .	9
2.4.2	Slot 4 . . . . .	10
2.4.3	Slot 5 . . . . .	11
2.4.4	Slot 6 . . . . .	12
2.4.5	Slot 7 . . . . .	13
2.5	FID Slots . . . . .	14
2.5.1	Slot 0 . . . . .	14
2.5.2	Slot 1 . . . . .	15
2.5.3	Slot 2 . . . . .	16
<b>A</b>	<b>Summary</b>	<b>17</b>
A.1	Status . . . . .	17
A.2	Comments . . . . .	17

# 1 Front

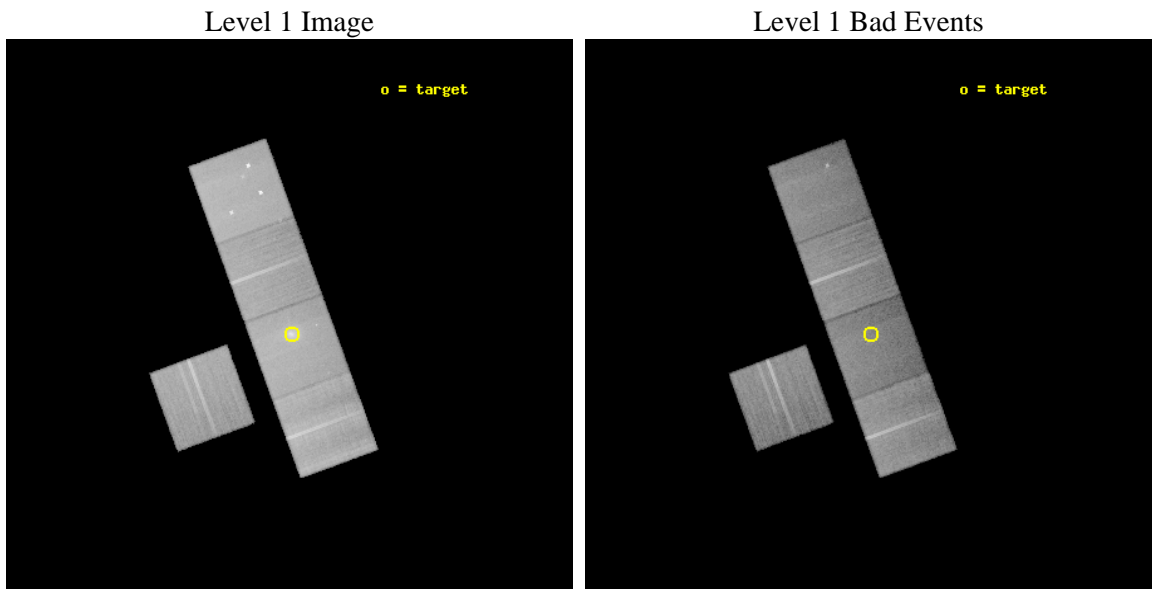
seq_num	800874	Sequence number
obs_id	11734	Observation id
title	Completing the cycle of cooling, star formation and AGN heating in Brightest Cluster Galaxies	Proposal title
observer	Dr Helen Russell	Principal investigator
object	Abell 795	Source name
dtcycle	0	&#160
cycle	P	events from which exps? Prim/Second/Both
ra_targ	141.022083	Observer's specified target RA [deg]
dec_targ	14.172778	Observer's specified target Dec [deg]
ra_nom	141.0270294913	Nominal RA [deg]
dec_nom	14.193172770813	Nominal Dec [deg]
roll_nom	69.931357550006	Nominal Roll [deg]
revision	2	Processing version of data
ontime	30138.200231791	Sum of GTIs [s]
livetime	29744.422458342	Livetime [s]
ontime3	30131.918211043	Sum of GTIs [s]
ontime5	30138.200231791	Sum of GTIs [s]
ontime6	30138.200231791	Sum of GTIs [s]
ontime7	30138.200231791	Sum of GTIs [s]
ontime8	30138.200231791	Sum of GTIs [s]
l2events	421252	Number of level 2 events



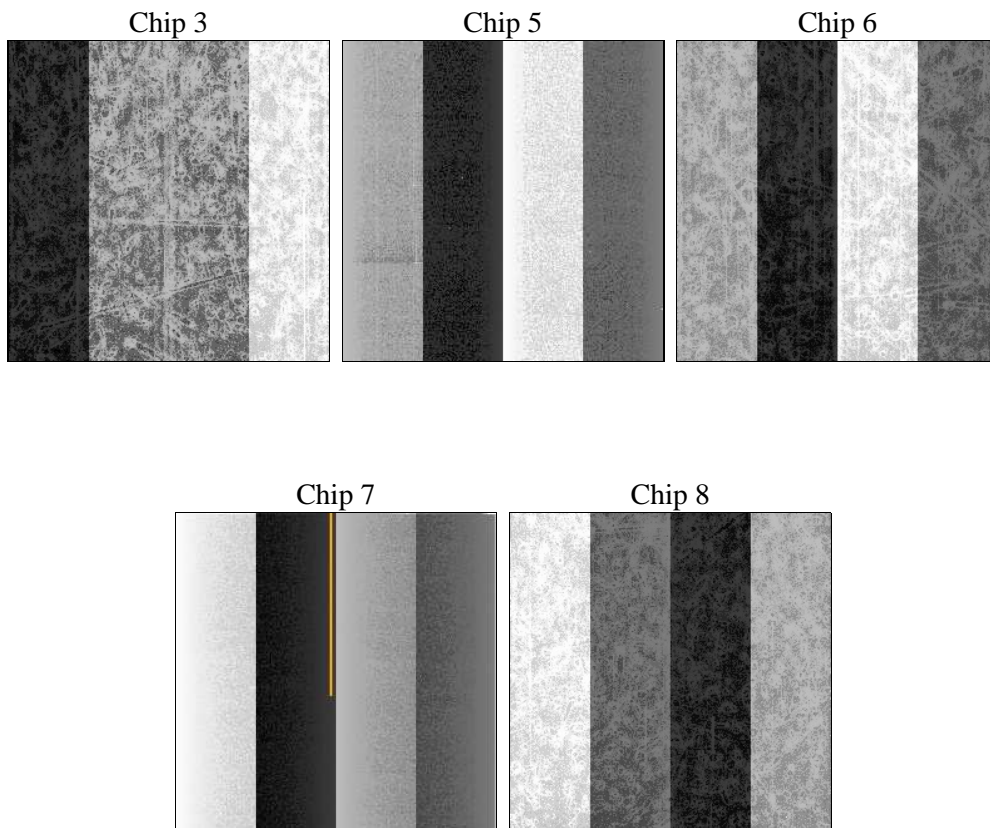
## 2 OBI

### 2.1 OBI

#### 2.1.1 Images



#### 2.1.2 Bias



### 2.1.3 Parameters

obi_num	0	Obi number	sched_exp_time	30000.000000	[s] Scheduled observation exposure time
ascdsver	8.4.5	Processing system revision	ontime	30138.200231791	Sum of GTIs [s]
caldsver	4.4.10	&#160	ontime3	30131.918211043	Sum of GTIs [s]
date	2012-06-19T22:44:59	Date and time of file creation	ontime5	30138.200231791	Sum of GTIs [s]
revision	2	Processing version of data	ontime6	30138.200231791	Sum of GTIs [s]
			ontime7	30138.200231791	Sum of GTIs [s]
			ontime8	30138.200231791	Sum of GTIs [s]
			l1events	1584364	Number of level 1 events

### 2.1.4 Events

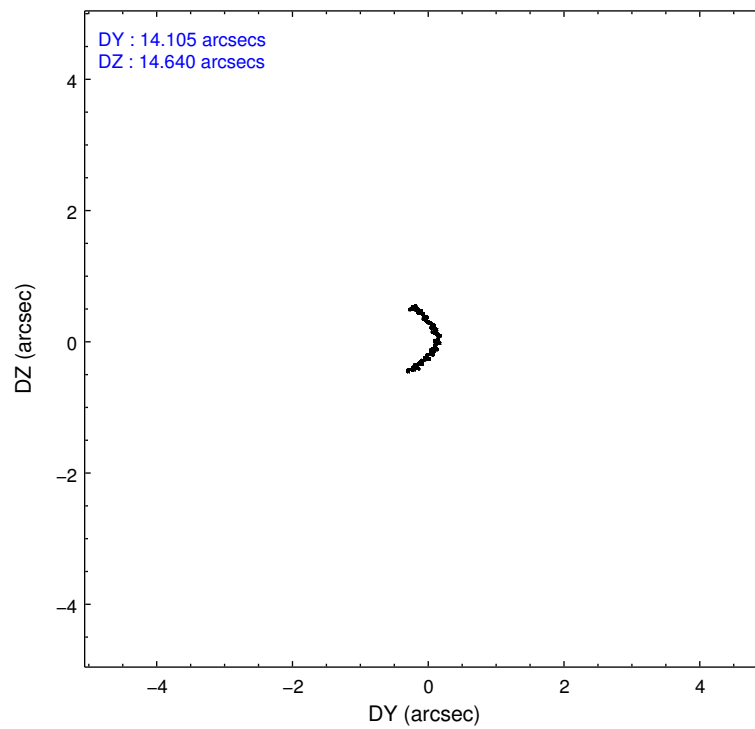
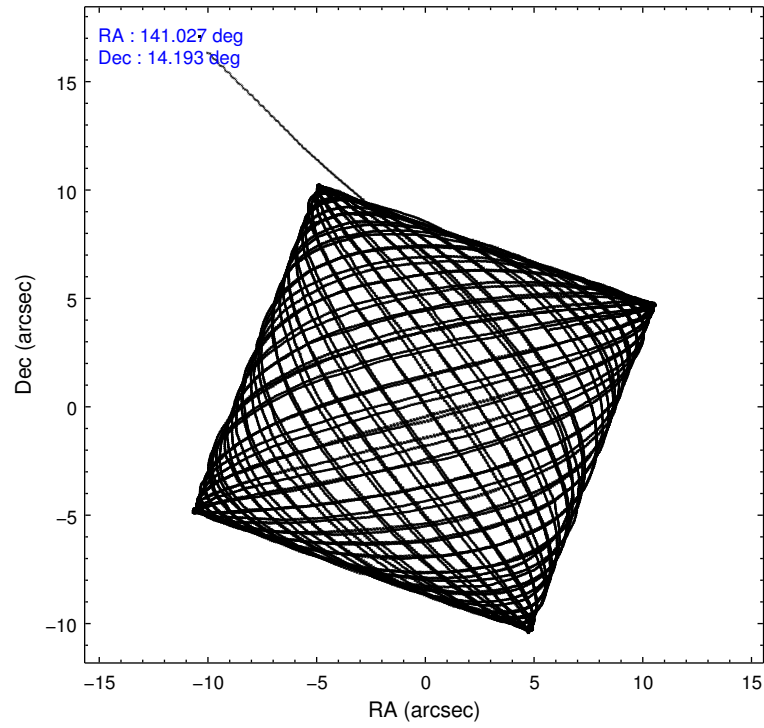
	ccd 3	ccd 5	ccd 6	ccd 7	ccd 8
level 1 events	252074	386122	267314	341706	337148
rejected events	227254	192048	238420	167499	252651
rejected %	90%	49%	89%	49%	74%

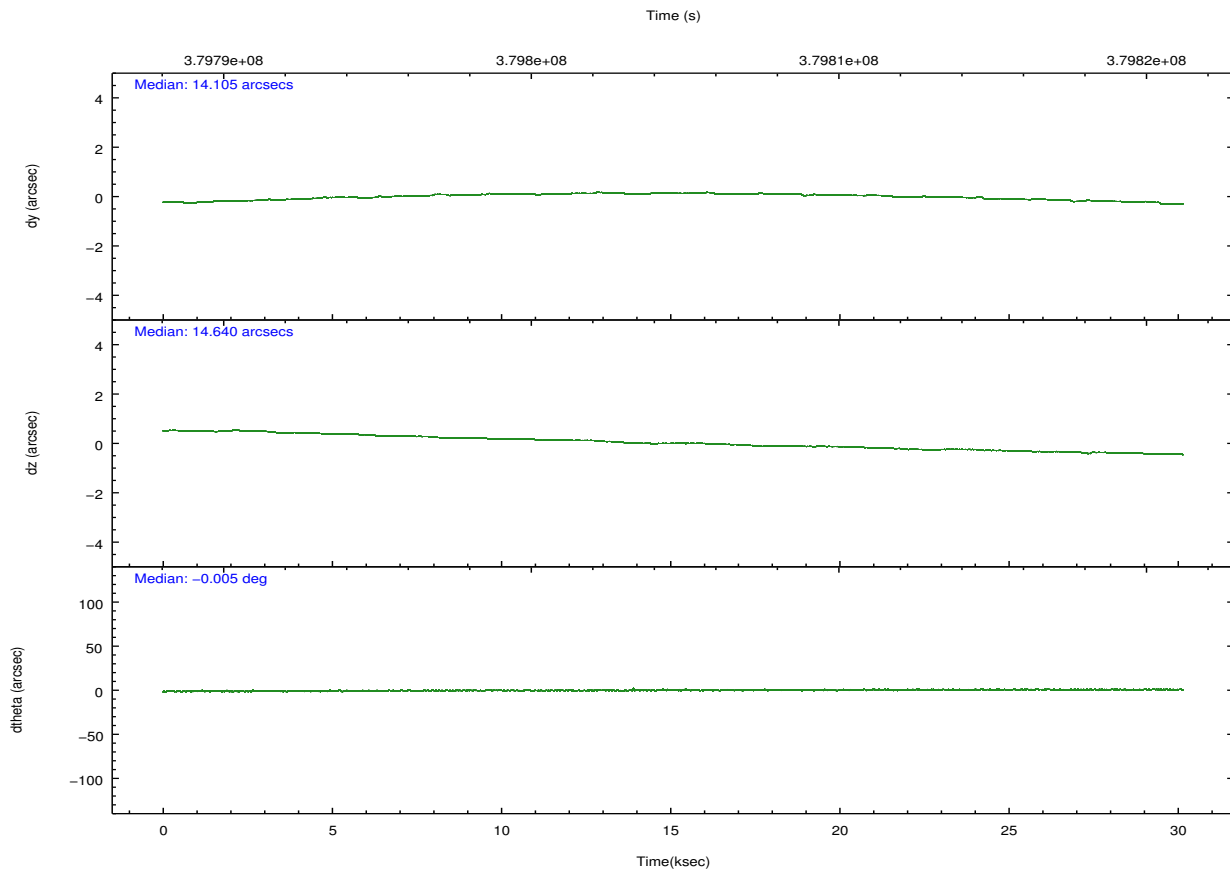
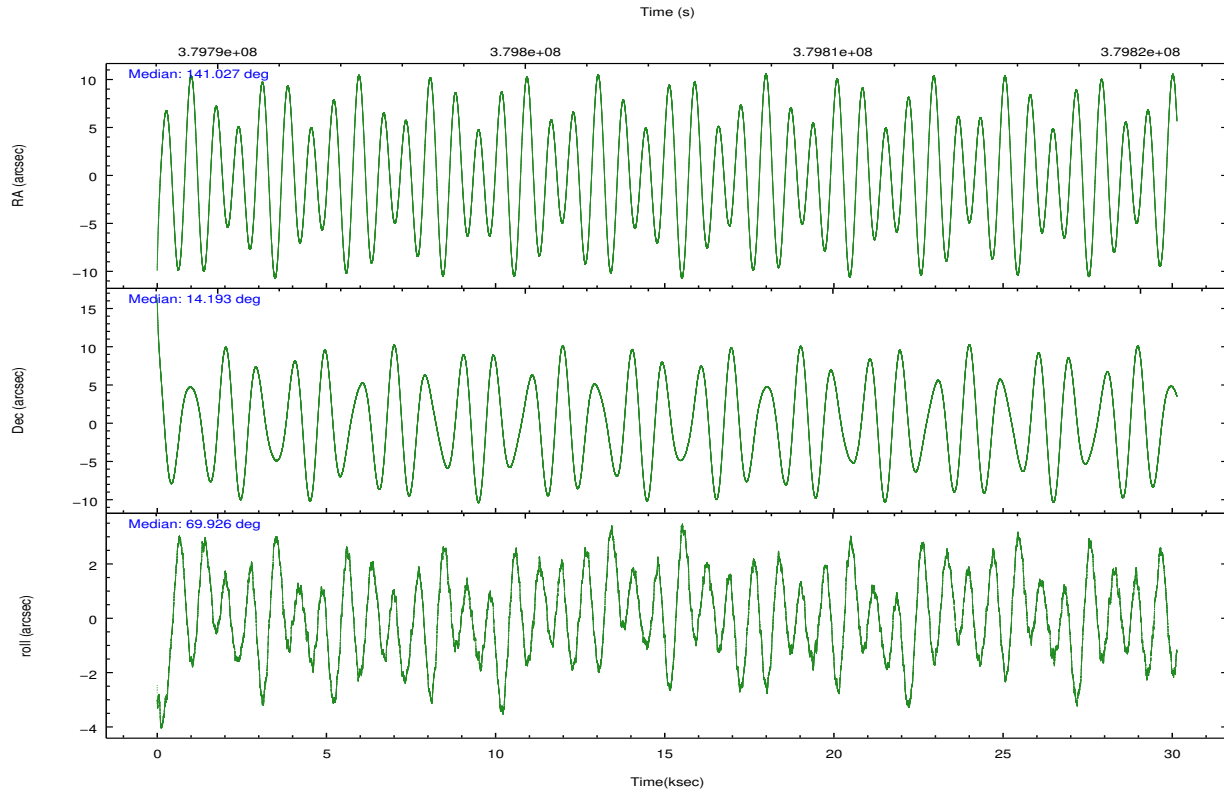
	ccd 3	ccd 5	ccd 6	ccd 7	ccd 8
grade 0 events	8887	24361	10654	24209	24930
	3%	6%	3%	7%	7%
grade 1 events	138	690	152	425	291
	0%	0%	0%	0%	0%
grade 2 events	5561	57632	6470	38283	20158
	2%	14%	2%	11%	5%
grade 3 events	2779	7517	2946	16624	8919
	1%	1%	1%	4%	2%
grade 4 events	2707	7356	2947	16492	8329
	1%	1%	1%	4%	2%
grade 5 events	10748	29588	11230	32045	16057
	4%	7%	4%	9%	4%
grade 6 events	4999	98260	6029	79496	22581
	1%	25%	2%	23%	6%
grade 7 events	216255	160718	226886	134132	235883
	85%	41%	84%	39%	69%

## 2.2 Compared Parameters

Parameter	Planned	Actual	Parameter	Planned	Actual
Instrument	ACIS	ACIS	Obspar format version number	7	7
Detector	ACIS-35678	ACIS-35678	Obspar file type	PREDICTED	ACTUAL
Grating	NONE	NONE	Obspar update status	NONE	UPDATED
Data mode	VFAINT	VFAINT	Number of optional ACIS chips dropped	0	0
Observation mode	POINTING	POINTING	On-chip summing requested	N	N
[deg] Pointing RA	141.032262	141.0270294913018	Subarray requested	NONE	NONE
[deg] Pointing Dec	14.166301	14.1931727708132	Alternating exposures requested	N	N
[deg] Pointing Roll	69.773449	69.93135755000628	[s] Primary exposure time	0.000000	3.1
[mm] SIM focus pos	-0.684267	-0.6828225247311905			
[mm] SIM defocus	0	0.001444936568705701			
[mm] SIM translation stage pos	-190.132523	-190.1400660498719			
[mm] SIM translation stage offset	0	0.00754346686406393			
[s] Observation start time (MET)	379789675.184000	379788616.52969			
Observation start date	2010-01-13T17:06:49	2010-01-13T16:50:16			
[s] Observation end time (MET)	379819675.184000	379820532.9813			
Observation end date	2010-01-14T01:26:49	2010-01-14T01:42:12			
Read mode	TIMED	TIMED			

## 2.3 Aspect



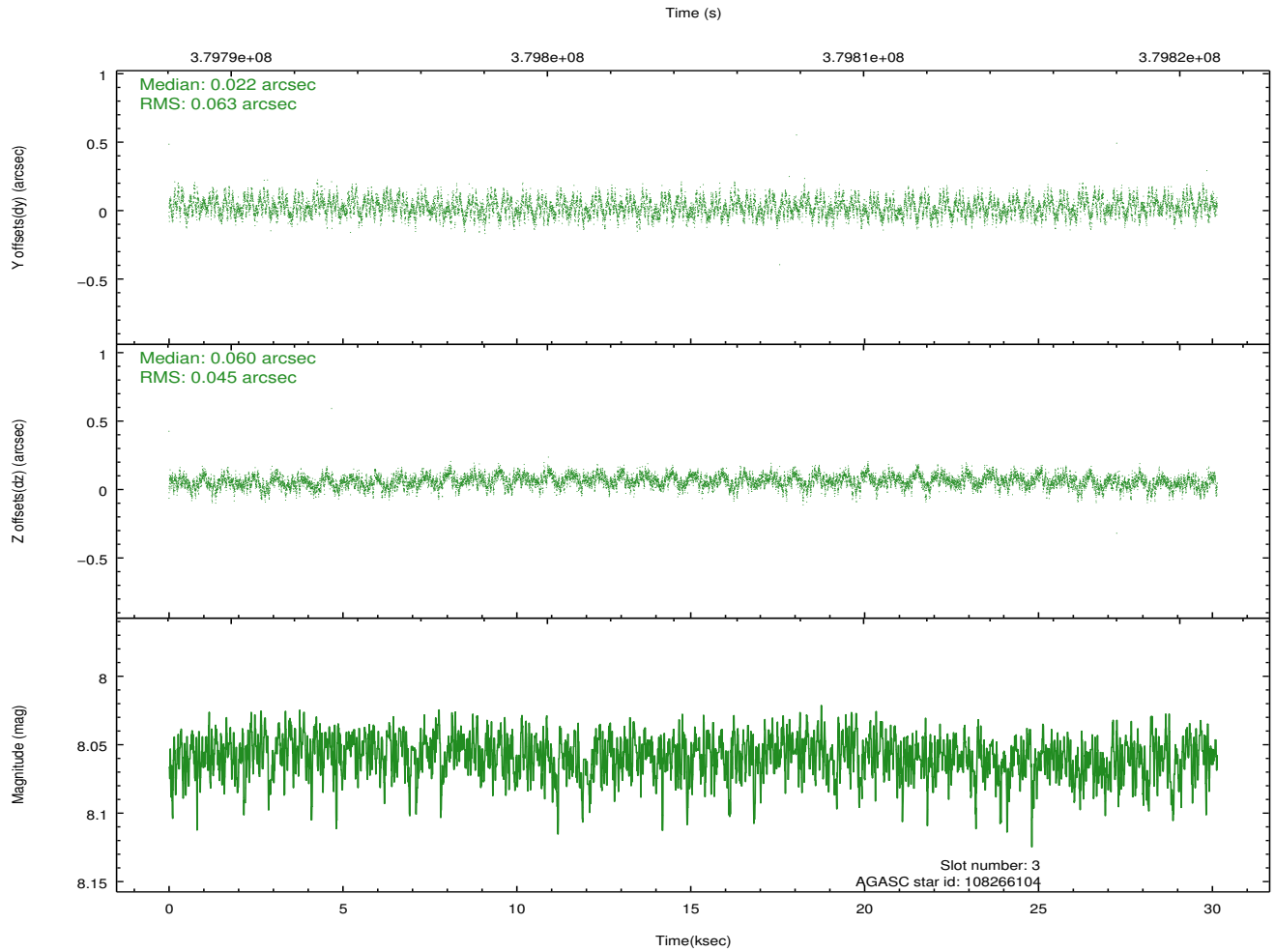
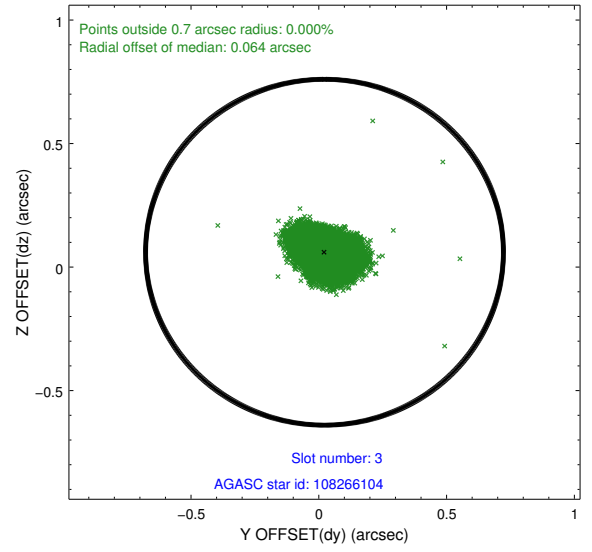
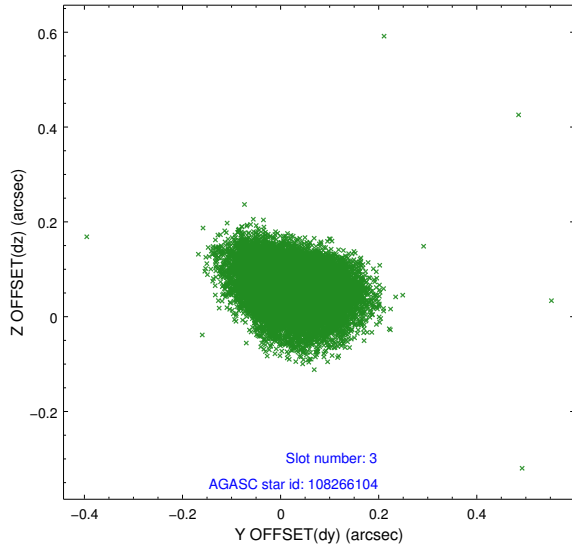


### Slot Statistics

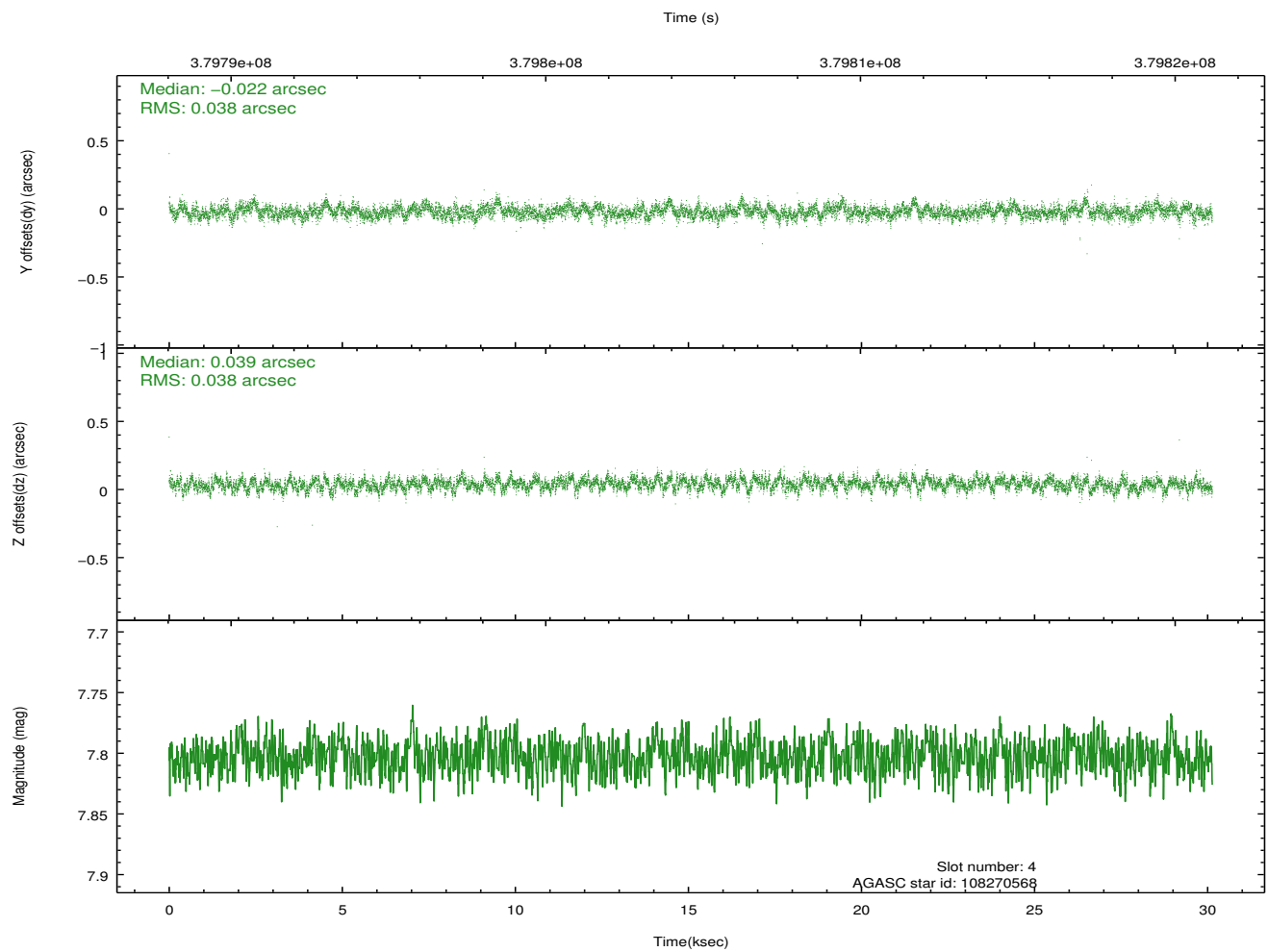
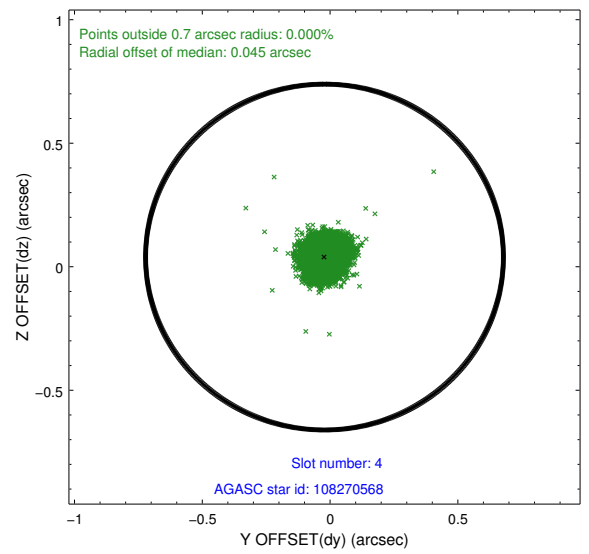
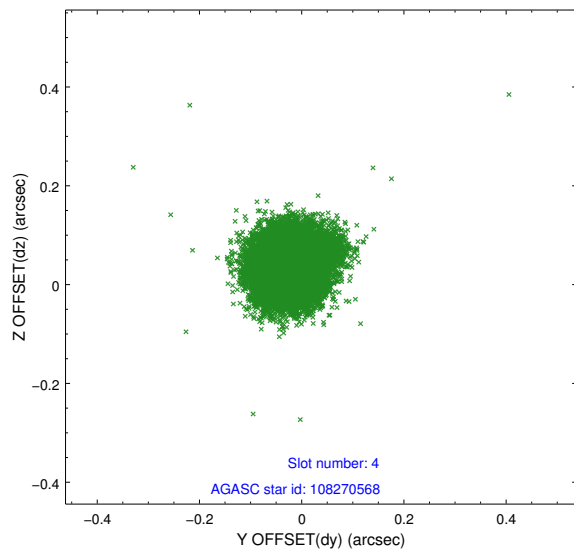
slot	status	id	mag	n_pts	med_dy	med_dz	dr1	dr2	ra	dec	mean_y	mean_z
0	FID	ACIS-S-2	6.92	7352	-0.071	-0.031	0.010	0.022	0.000000	0.000000	-767.08	-1736.08
1	FID	ACIS-S-4	7.01	7352	0.197	0.042	0.009	0.018	0.000000	0.000000	2146.41	172.44
2	FID	ACIS-S-5	7.03	7352	-0.158	-0.003	0.012	0.023	0.000000	0.000000	-1819.94	166.10
3	GUIDE	108266104	8.06	14695	0.022	0.060	0.082	0.131	141.701359	14.493976	1916.31	-1778.72
4	GUIDE	108270568	7.80	14701	-0.022	0.039	0.057	0.092	141.340561	14.190948	456.25	-978.44
5	GUIDE	108272072	8.92	14690	0.009	-0.051	0.074	0.119	140.865637	13.852838	-1259.81	156.38
6	GUIDE	108272144	9.05	14696	0.033	0.054	0.078	0.126	140.454000	13.926911	-1504.92	1599.01
7	GUIDE	108276120	8.75	14694	-0.045	-0.100	0.082	0.131	140.600416	14.887836	1918.72	2308.89

## 2.4 Star Slots

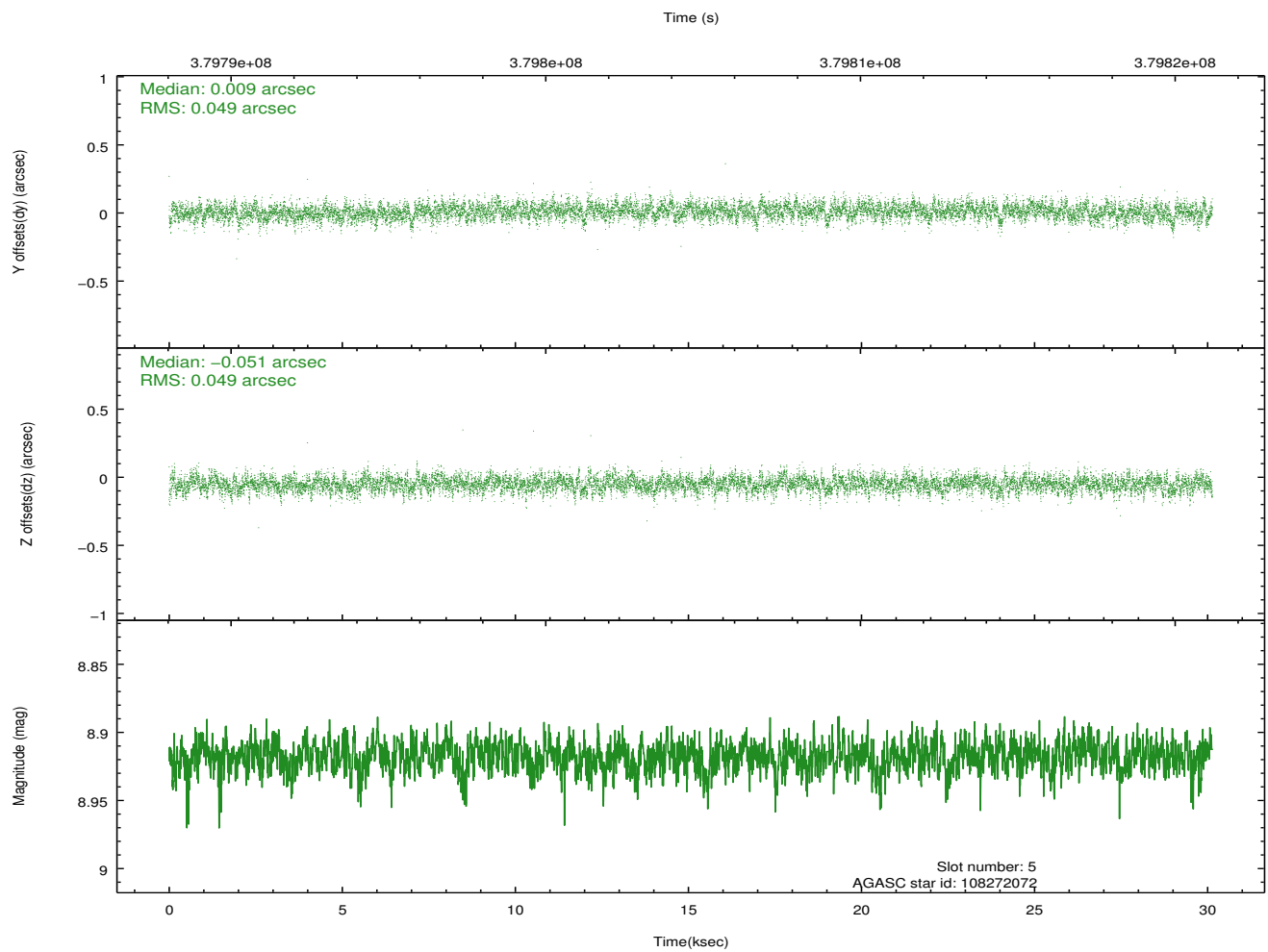
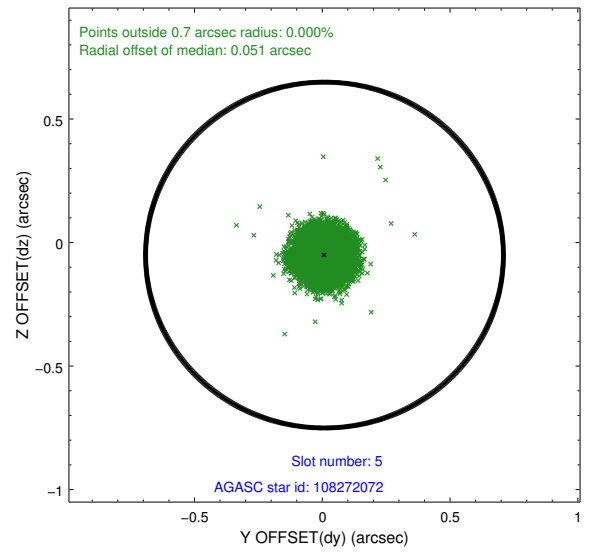
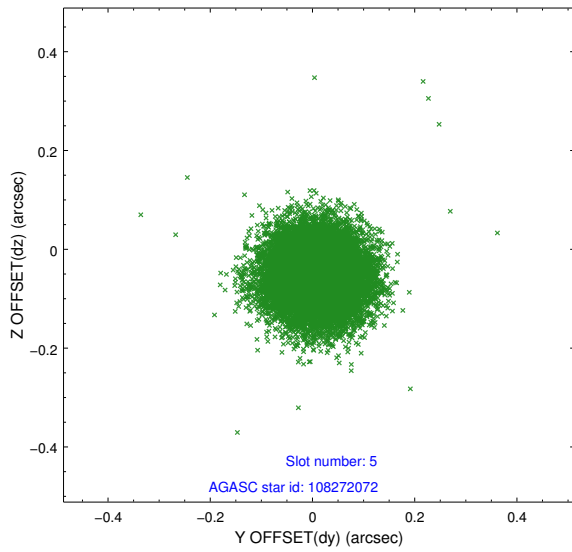
### 2.4.1 Slot 3



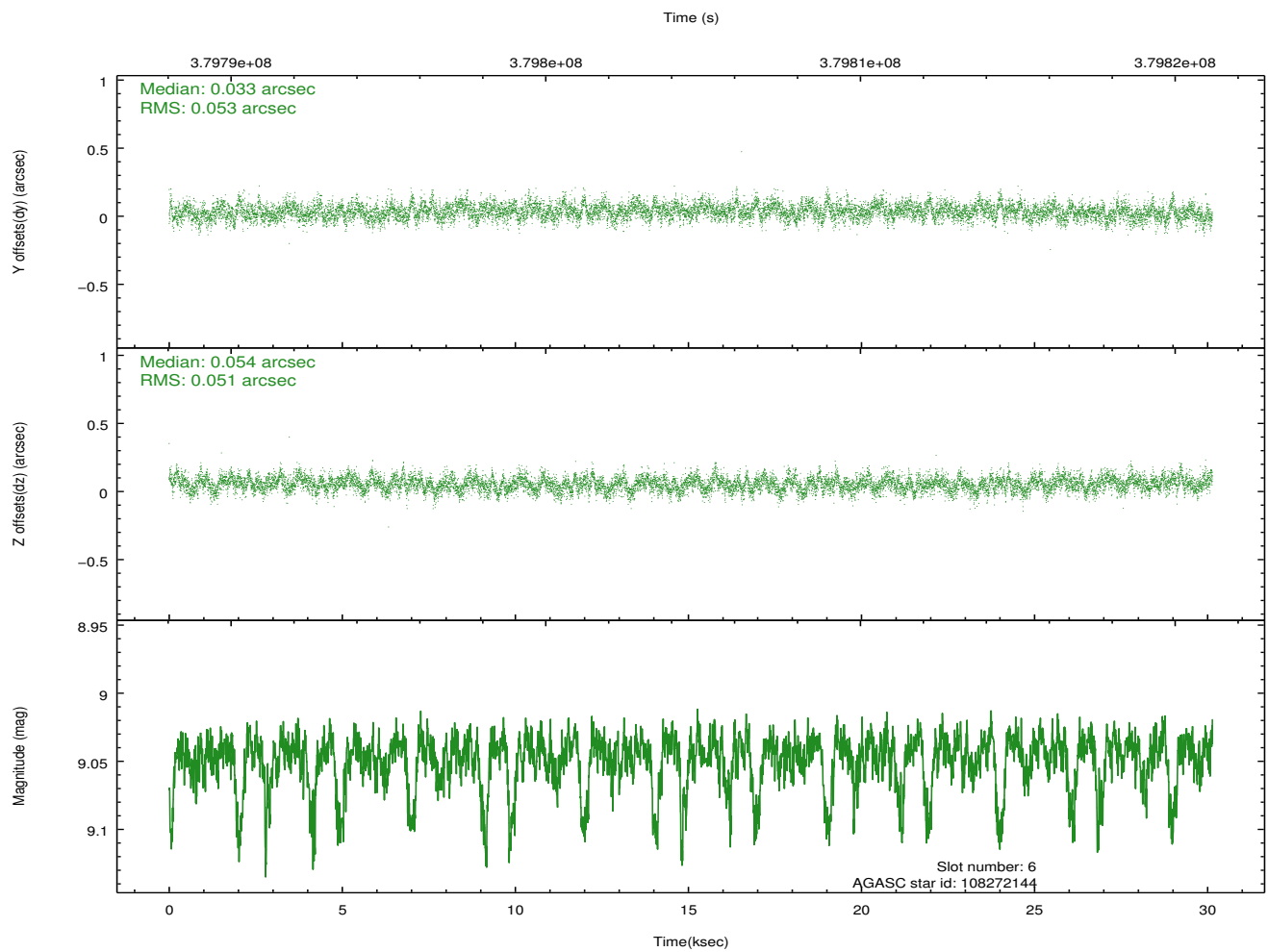
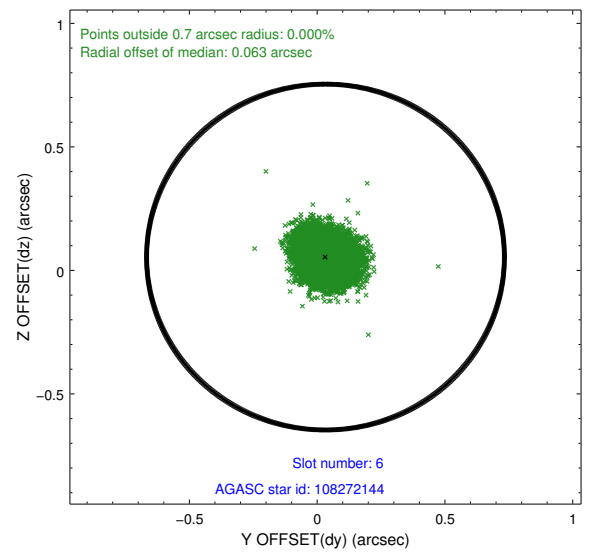
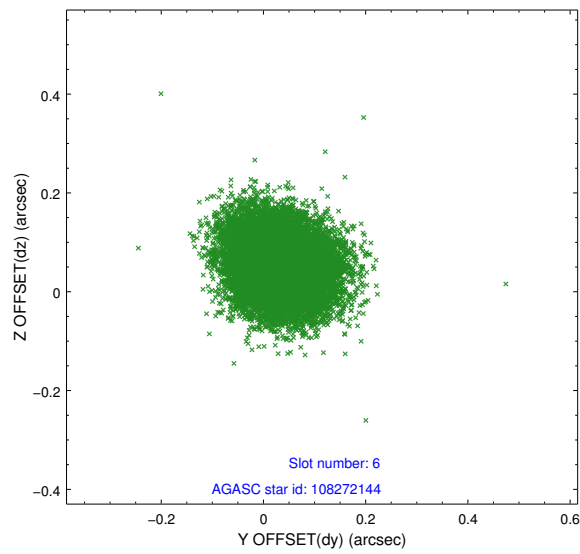
## 2.4.2 Slot 4



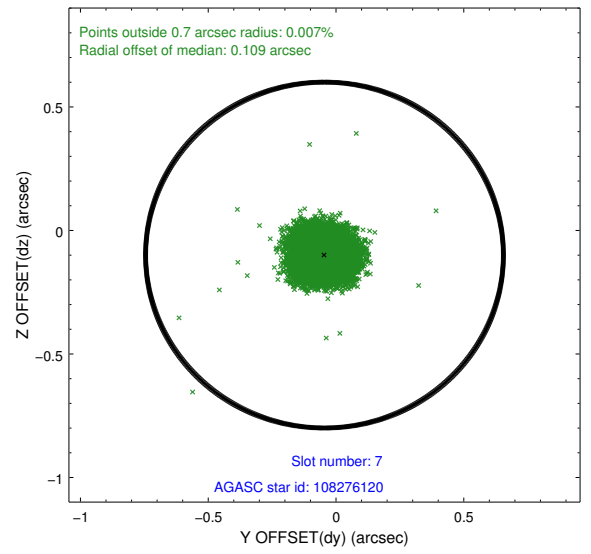
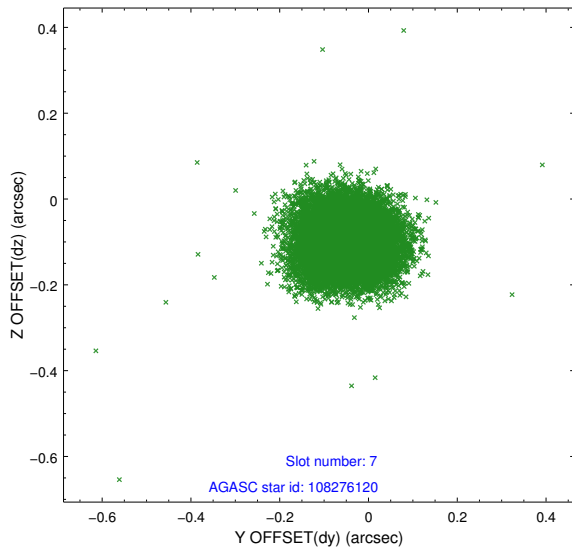
### 2.4.3 Slot 5



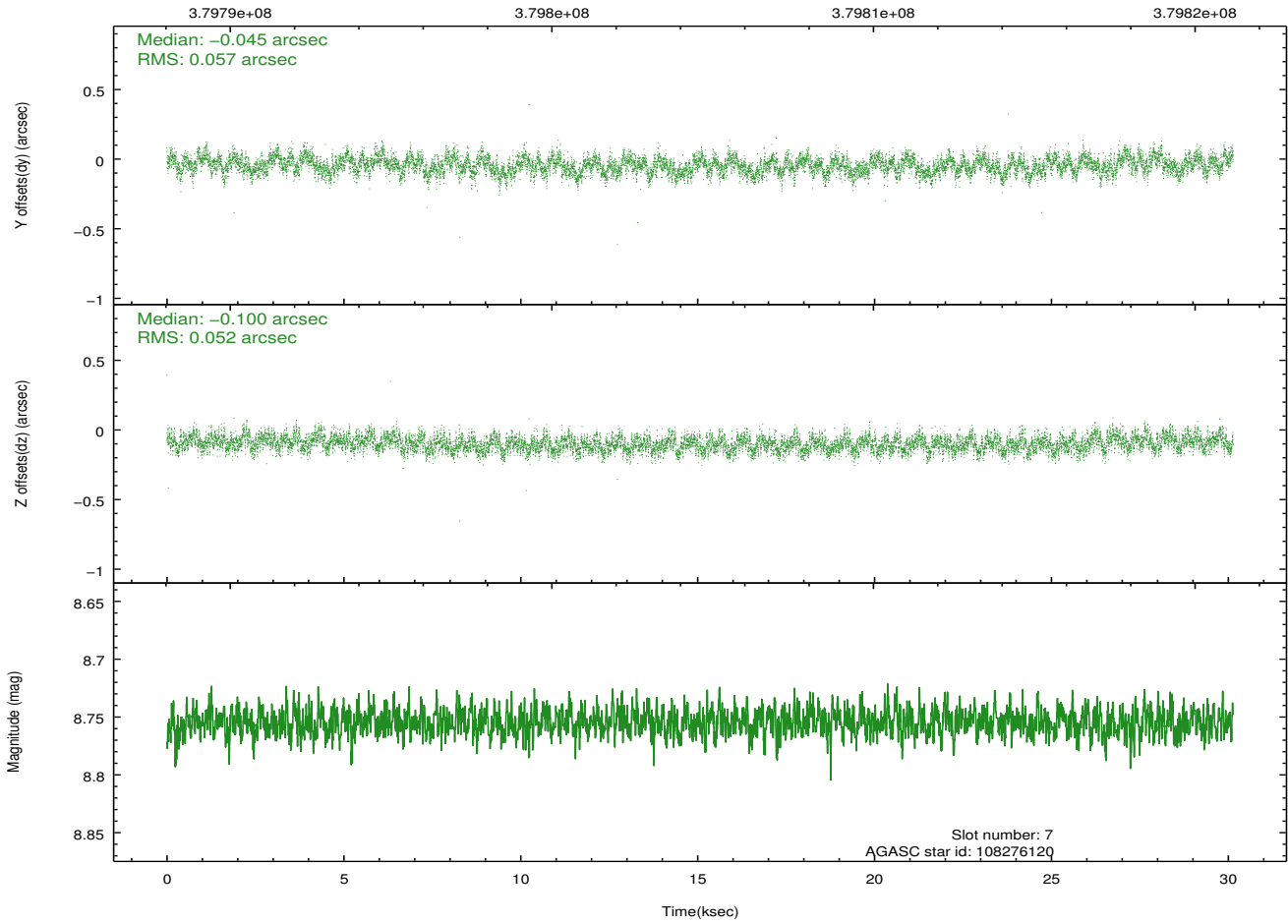
## 2.4.4 Slot 6



### 2.4.5 Slot 7

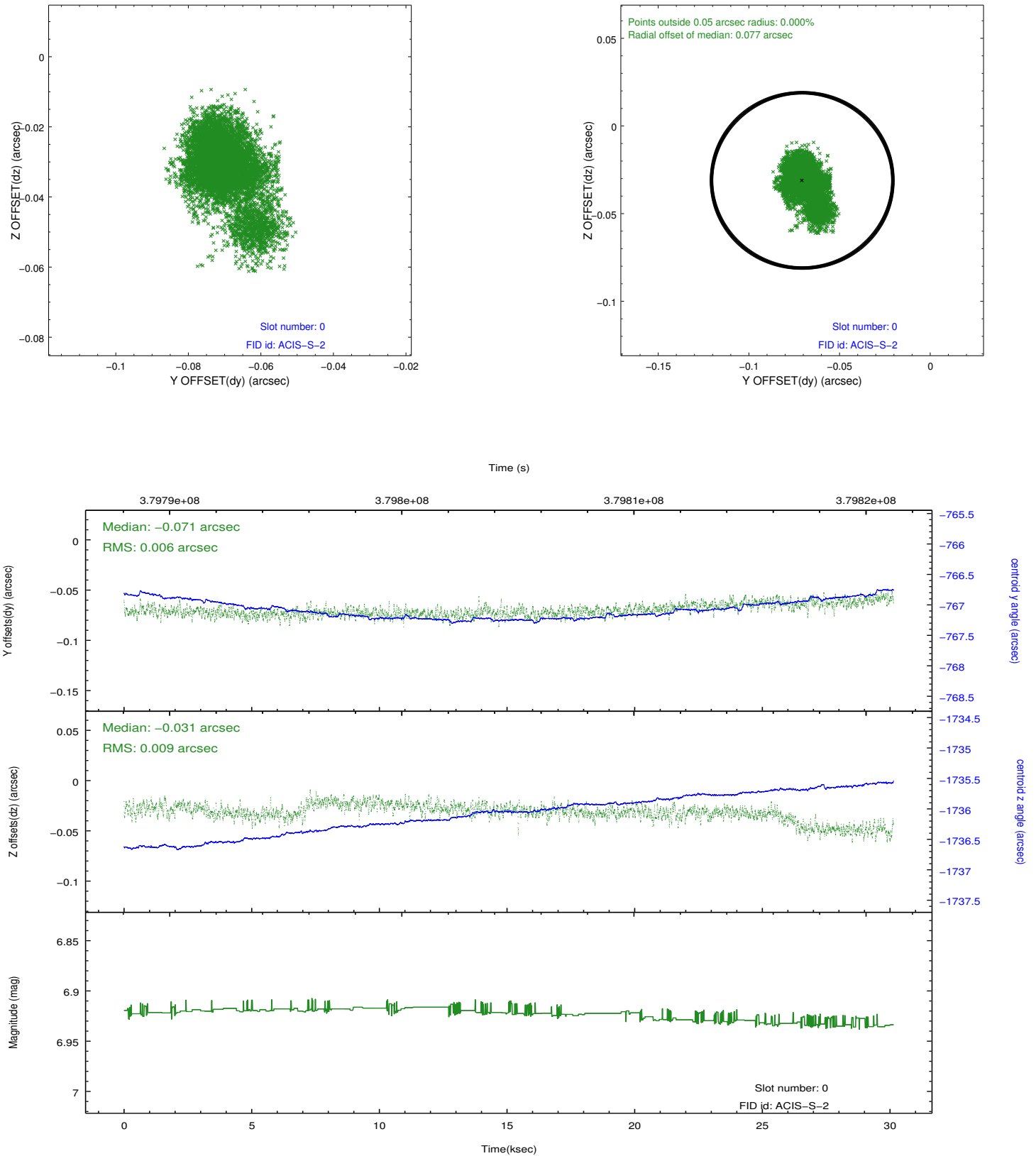


Time (s)

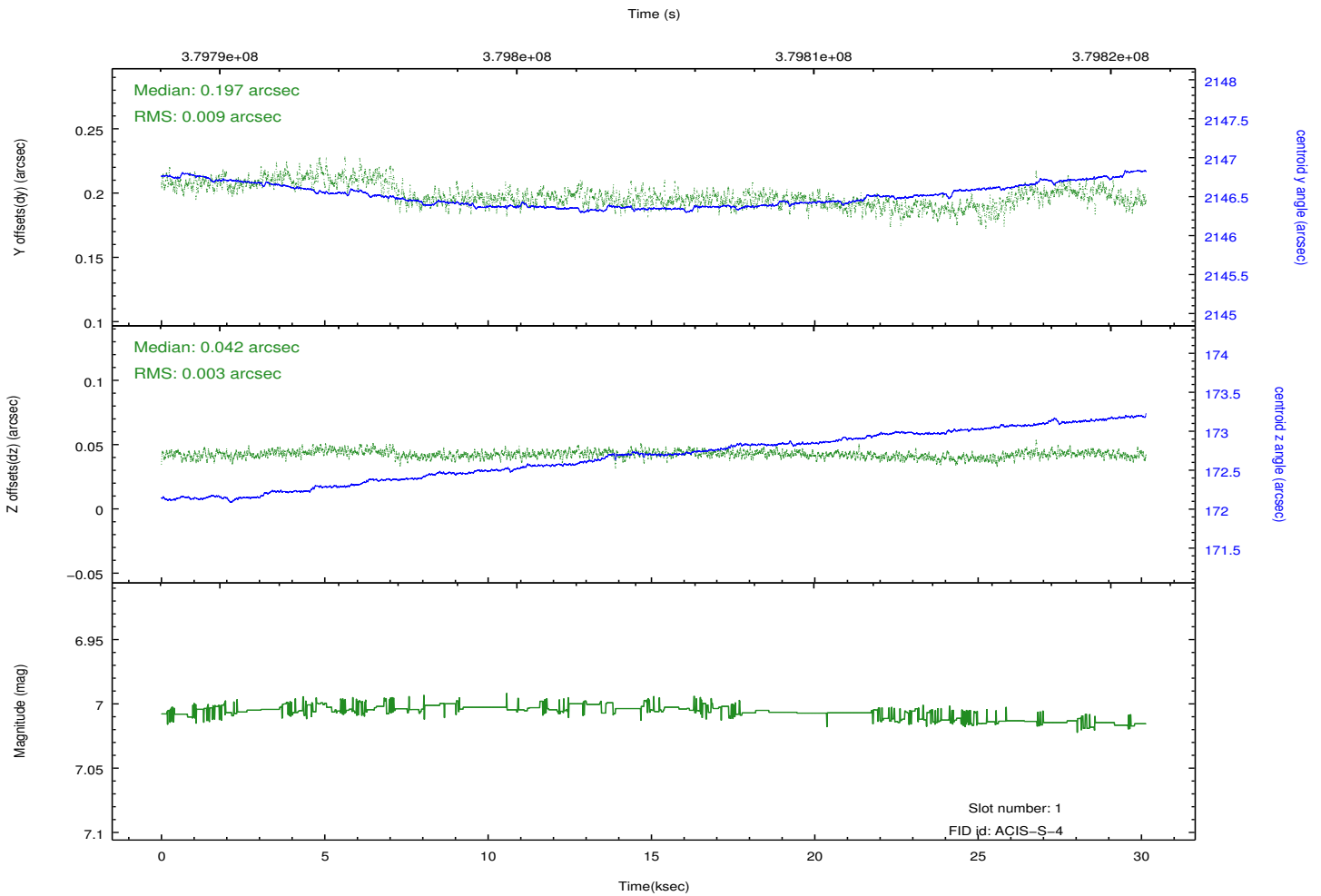
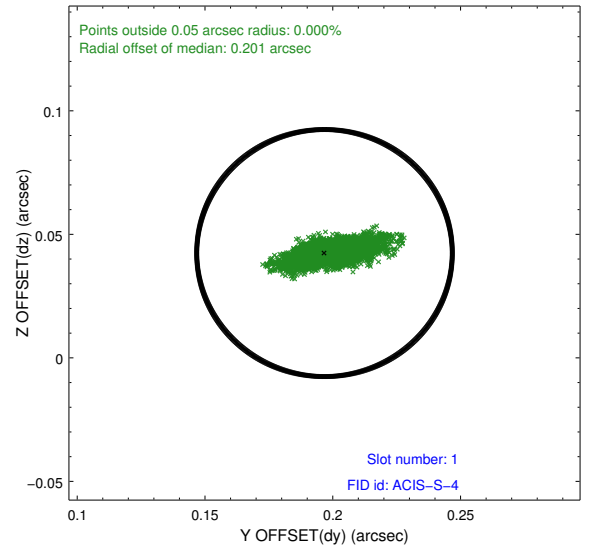
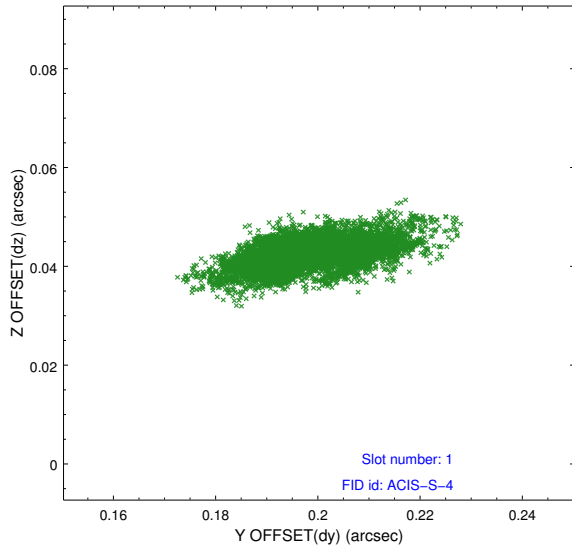


## 2.5 FID Slots

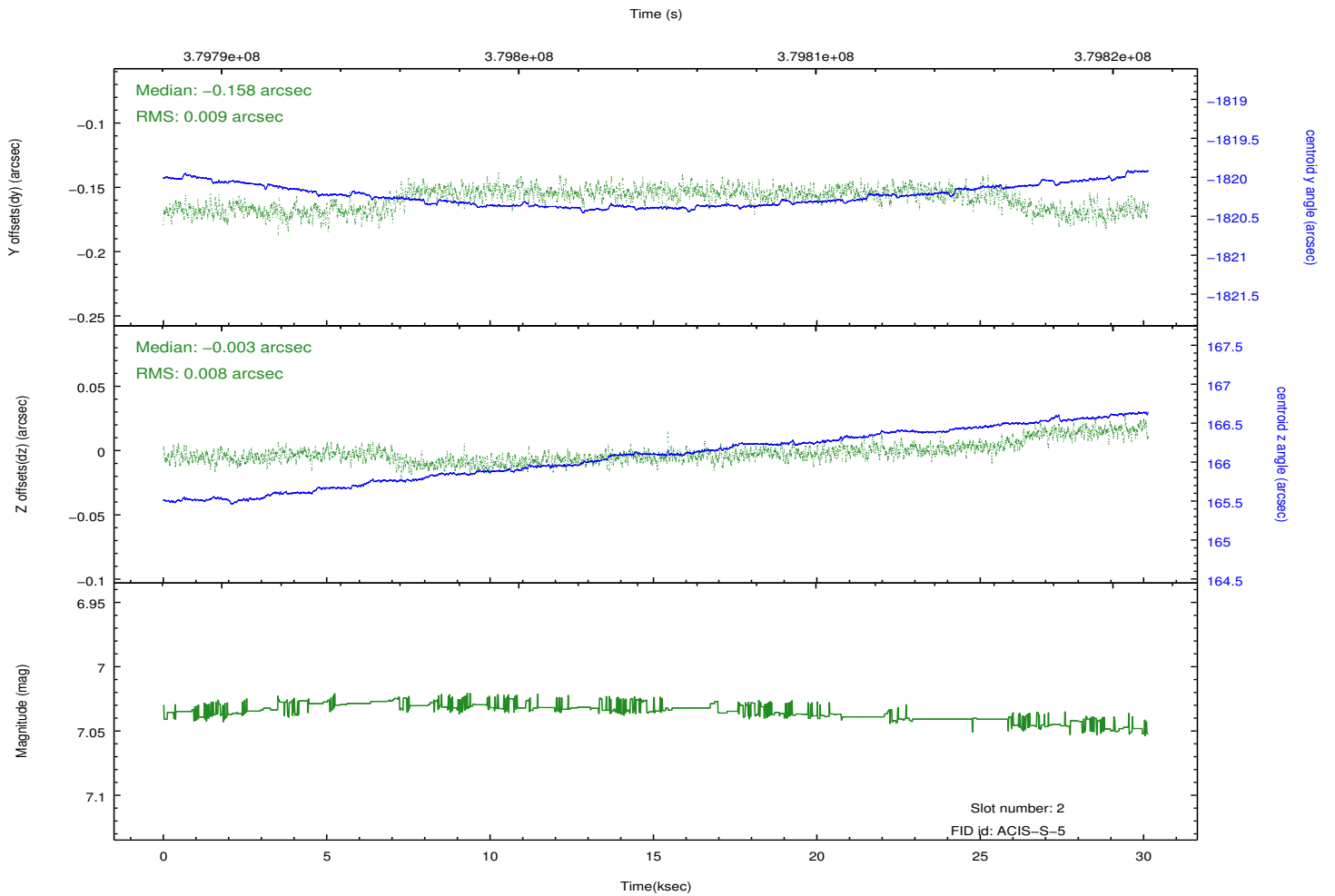
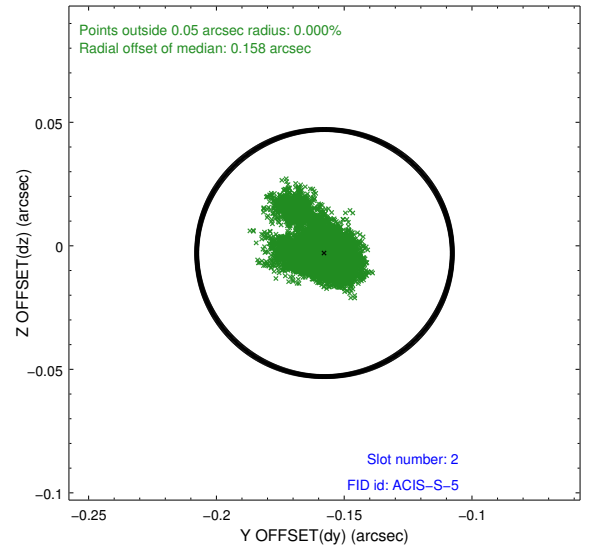
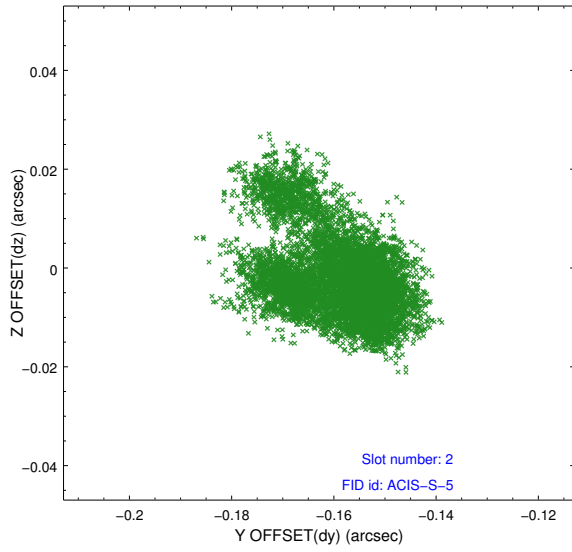
### 2.5.1 Slot 0



## 2.5.2 Slot 1



### 2.5.3 Slot 2



# A Summary

## A.1 Status

V&V Scientist	Jen Lauer
V&V Date (YYYY-MM-DD)	2012.06.25
V&V Edition	1
V&V Disposition and Status	OK
V&V Charge Time	30.138200231791

## A.2 Comments