

V&V Reference Report

L2 ASCDS Version : 8.4.5

Observation 11754 - L2 Version 2
Chandra X-Ray Center

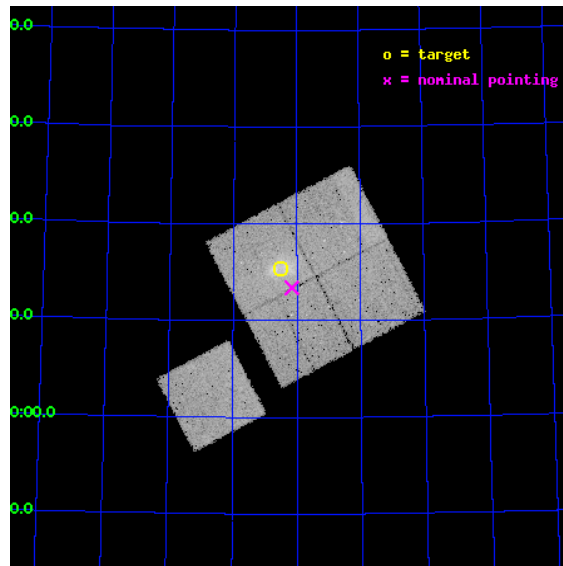
L2 Processing Date : Jun 29 2012

Contents

1	Front	2
2	OBI	3
2.1	OBI	3
2.1.1	Images	3
2.1.2	Bias	3
2.1.3	Parameters	4
2.1.4	Events	4
2.2	Compared Parameters	5
2.3	Aspect	6
2.4	Star Slots	9
2.4.1	Slot 3	9
2.4.2	Slot 4	10
2.4.3	Slot 5	11
2.4.4	Slot 6	12
2.4.5	Slot 7	13
2.5	FID Slots	14
2.5.1	Slot 0	14
2.5.2	Slot 1	15
2.5.3	Slot 2	16
A	Summary	17
A.1	Status	17
A.2	Comments	17

1 Front

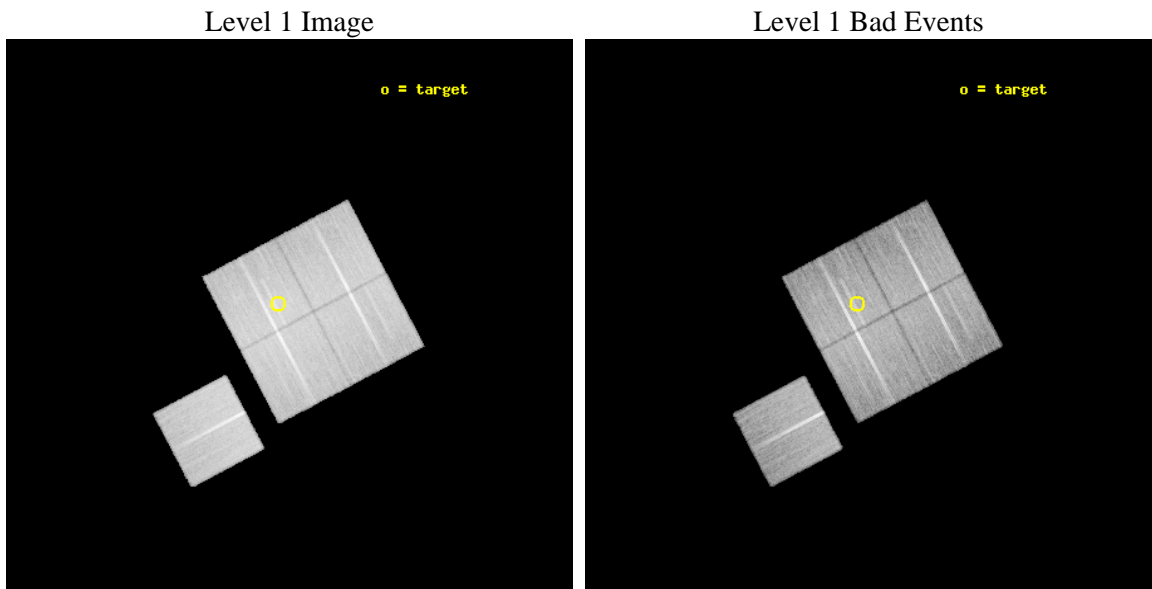
seq_num	800894	Sequence number
obs_id	11754	Observation id
title	MACS1354+77: A new ``bullet' cluster?	Proposal title
observer	Prof. Dan Maoz	Principal investigator
object	MACSJ1354.6+7715	Source name
dtcycle	0	
cycle	P	events from which exps? Prim/Second/Both
ra_targ	208.6275	Observer's specified target RA [deg]
dec_targ	77.255806	Observer's specified target Dec [deg]
ra_nom	208.54021415119	Nominal RA [deg]
dec_nom	77.223335951966	Nominal Dec [deg]
roll_nom	242.18031869559	Nominal Roll [deg]
revision	2	Processing version of data
ontime	33042.777313411	Sum of GTIs [s]
livetime	32611.049102073	Livetime [s]
ontime0	33052.200254202	Sum of GTIs [s]
ontime1	33052.200254202	Sum of GTIs [s]
ontime2	33052.200254202	Sum of GTIs [s]
ontime3	33042.777313411	Sum of GTIs [s]
ontime6	33045.918422878	Sum of GTIs [s]
l2events	120714	Number of level 2 events



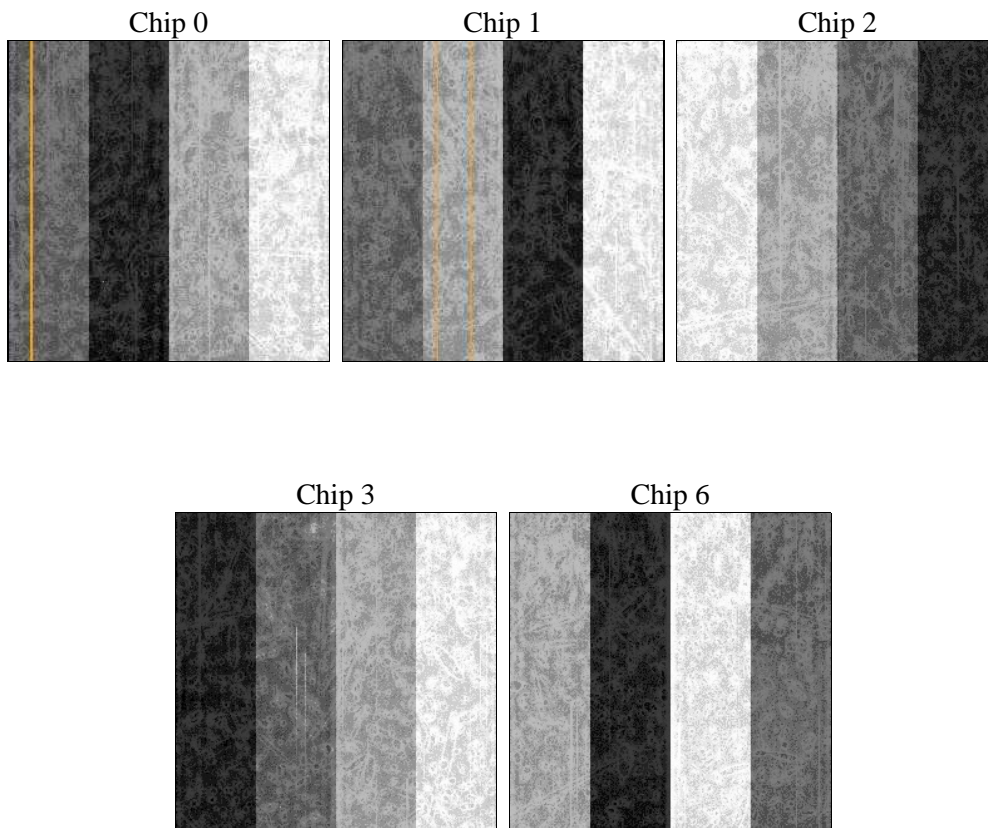
2 OBI

2.1 OBI

2.1.1 Images



2.1.2 Bias



2.1.3 Parameters

obi_num	0	Obi number	sched_exp_time	33000.000000	[s] Scheduled observation exposure time
ascdsver	8.4.5	Processing system revision	ontime	33042.777313411	Sum of GTIs [s]
caldbver	4.5.0	 	ontime0	33052.200254202	Sum of GTIs [s]
date	2012-06-29T11:20:24	Date and time of file creation	ontime1	33052.200254202	Sum of GTIs [s]
revision	2	Processing version of data	ontime2	33052.200254202	Sum of GTIs [s]
			ontime3	33042.777313411	Sum of GTIs [s]
			ontime6	33045.918422878	Sum of GTIs [s]
			l1events	1224227	Number of level 1 events

2.1.4 Events

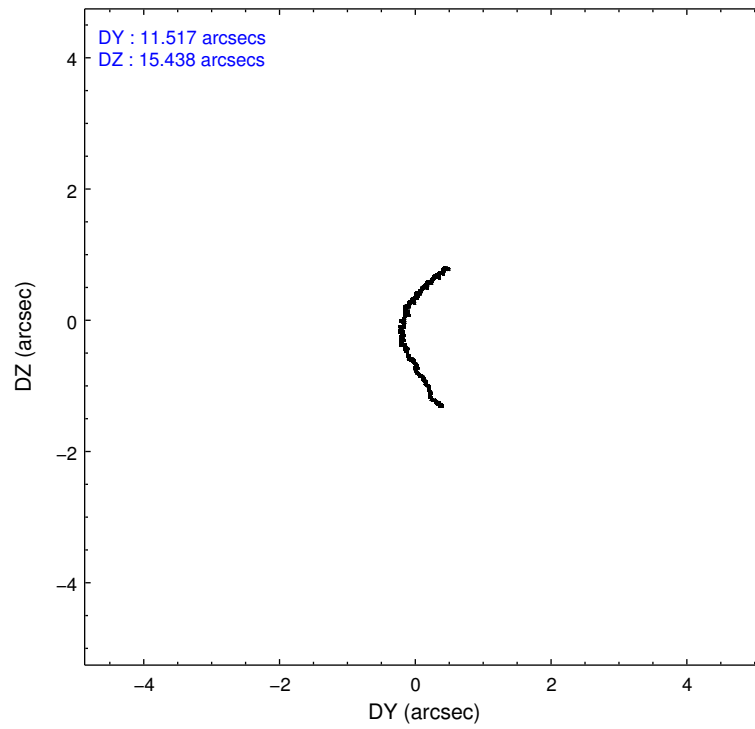
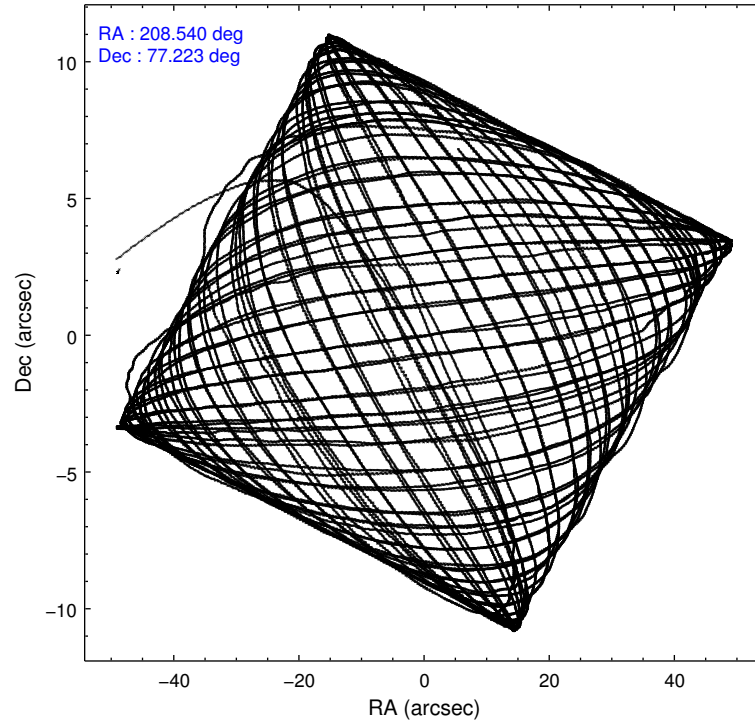
	ccd 0	ccd 1	ccd 2	ccd 3	ccd 6
level 1 events	231804	233154	251070	256668	251531
rejected events	204836	202779	224696	224374	224209
rejected %	88%	86%	89%	87%	89%

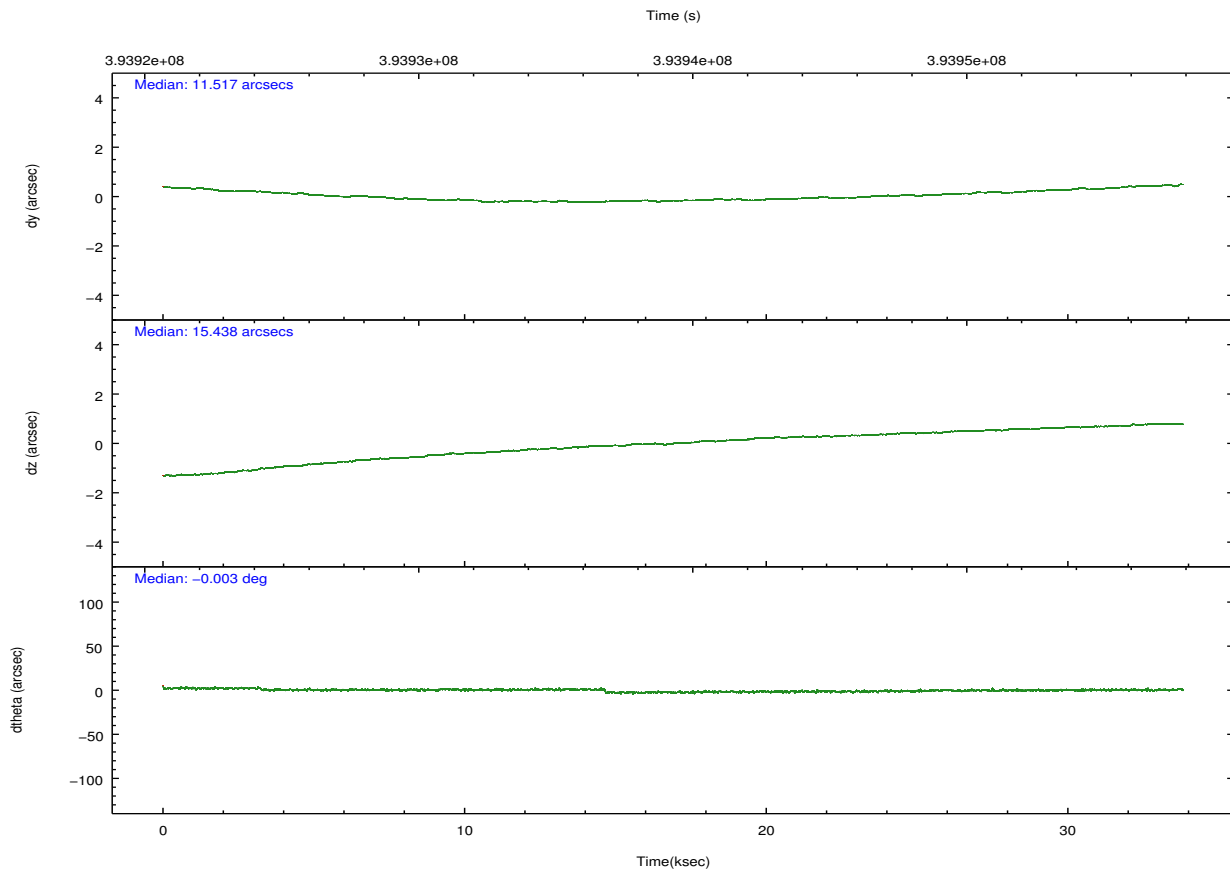
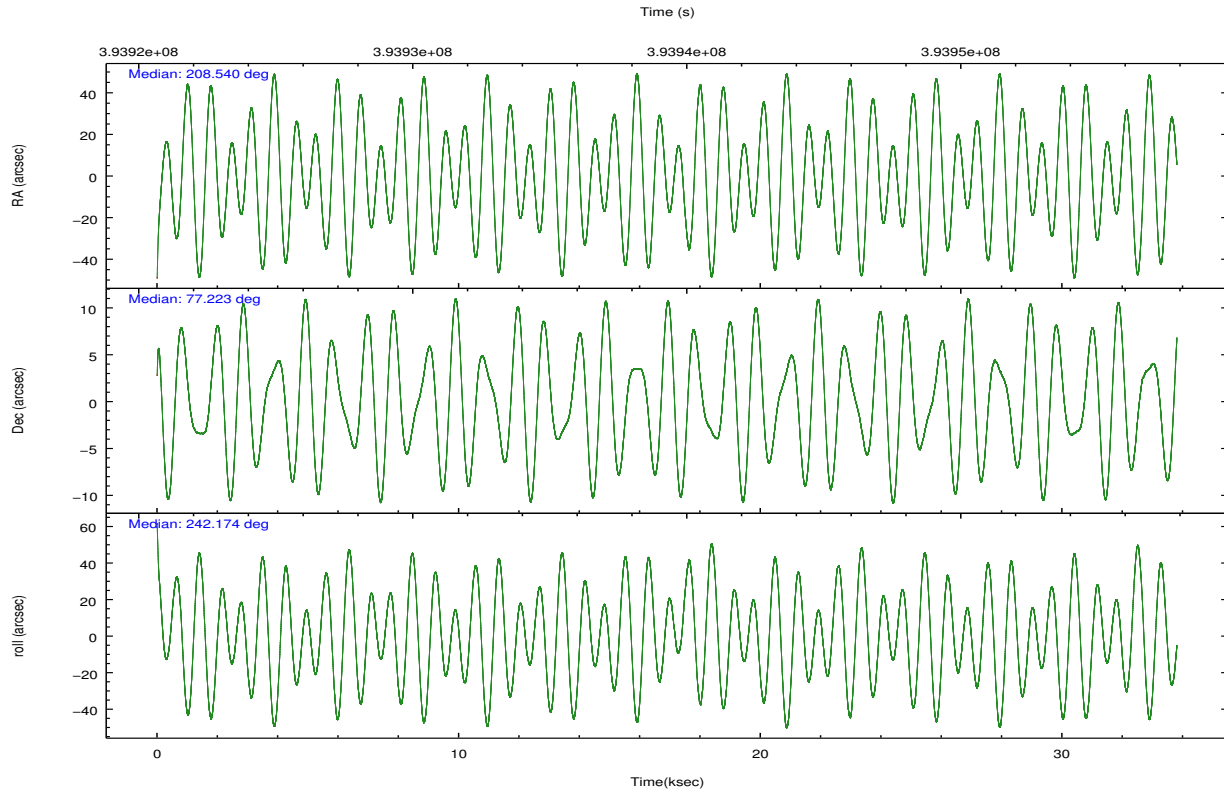
	ccd 0	ccd 1	ccd 2	ccd 3	ccd 6
grade 0 events	9262	10937	9600	14486	9283
	3%	4%	3%	5%	3%
grade 1 events	126	106	138	190	112
	0%	0%	0%	0%	0%
grade 2 events	6672	7120	6500	6319	6188
	2%	3%	2%	2%	2%
grade 3 events	2937	3110	2657	3081	2984
	1%	1%	1%	1%	1%
grade 4 events	2771	3093	2749	2834	2891
	1%	1%	1%	1%	1%
grade 5 events	9949	10782	9128	11324	10901
	4%	4%	3%	4%	4%
grade 6 events	5329	6116	4868	5576	5981
	2%	2%	1%	2%	2%
grade 7 events	194758	191890	215430	212858	213191
	84%	82%	85%	82%	84%

2.2 Compared Parameters

Parameter	Planned	Actual	Parameter	Planned	Actual
Instrument	ACIS	ACIS	Obspar format version number	7	7
Detector	ACIS-01236	ACIS-01236	Obspar file type	PREDICTED	ACTUAL
Grating	NONE	NONE	Obspar update status	NONE	UPDATED
Data mode	VFAINT	VFAINT	CCD I0 on	Y	Y
Observation mode	POINTING	POINTING	CCD I1 on	Y	Y
[deg] Pointing RA	208.534952	208.5402141511909	CCD I2 on	Y	Y
[deg] Pointing Dec	77.250825	77.22333595196592	CCD I3 on	Y	Y
[deg] Pointing Roll	241.976766	242.1803186955885	CCD S0 on	N	N
[mm] SIM focus pos	-0.782348	-0.7809083437167272	CCD S1 on	N	N
[mm] SIM defocus	0	0.001439871863259334	CCD S2 on	O1	Y
[mm] SIM translation stage pos	-227.592463	-227.5933067819097	CCD S3 on	N	N
[mm] SIM translation stage offset	-6	-5.999146221020027	CCD S4 on	N	N
[s] Observation start time (MET)	393923183.184000	393921405.39775	CCD S5 on	N	N
Observation start date	2010-06-26T07:05:17	2010-06-26T06:36:45	Number of optional ACIS chips dropped	0	0
[s] Observation end time (MET)	393956183.184000	393957133.31207	On-chip summing requested	N	N
Observation end date	2010-06-26T16:15:17	2010-06-26T16:32:13	Subarray requested	NONE	NONE
Read mode	TIMED	TIMED	Alternating exposures requested	N	N
			[s] Primary exposure time	0.000000	3.1

2.3 Aspect



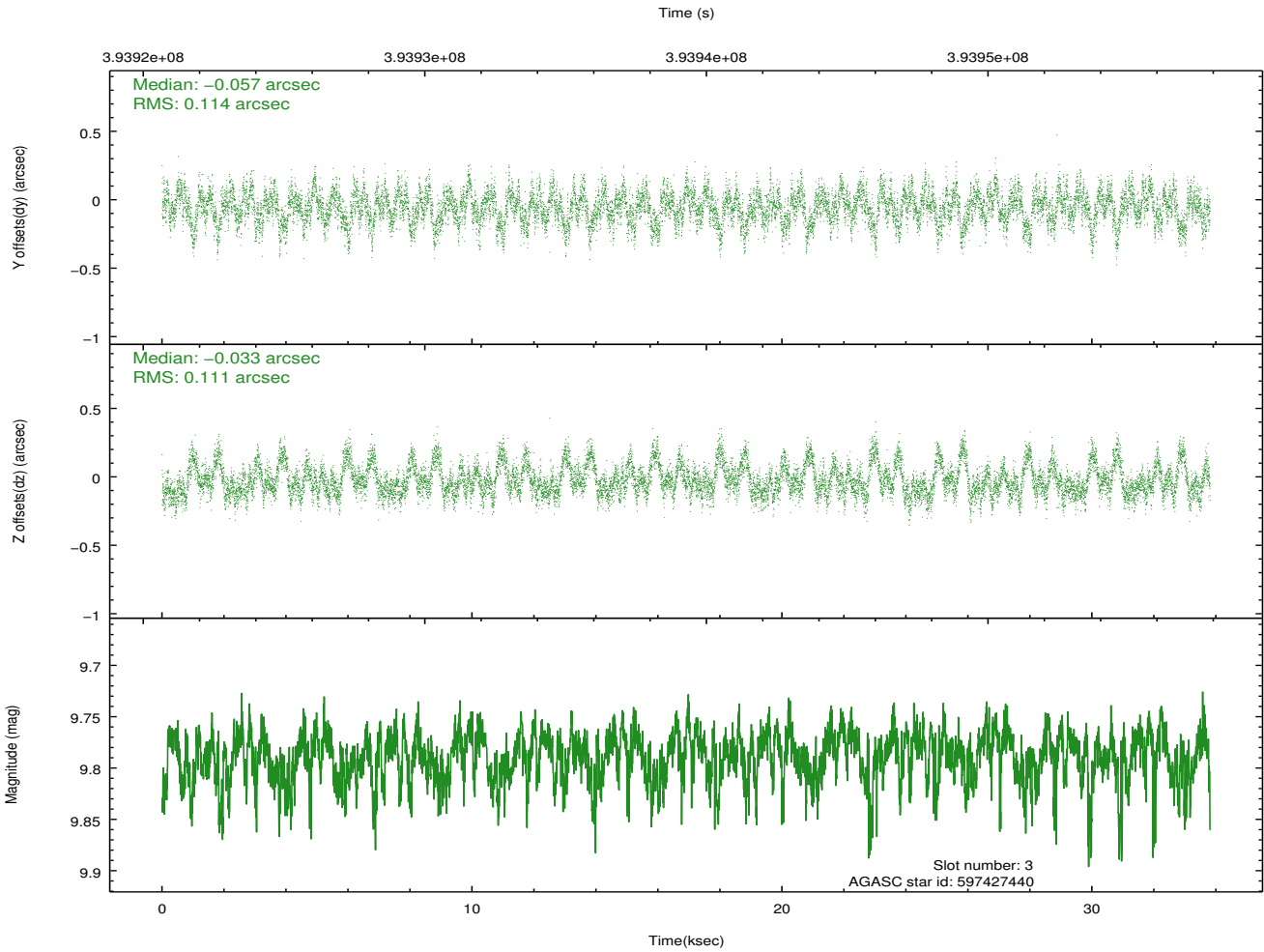
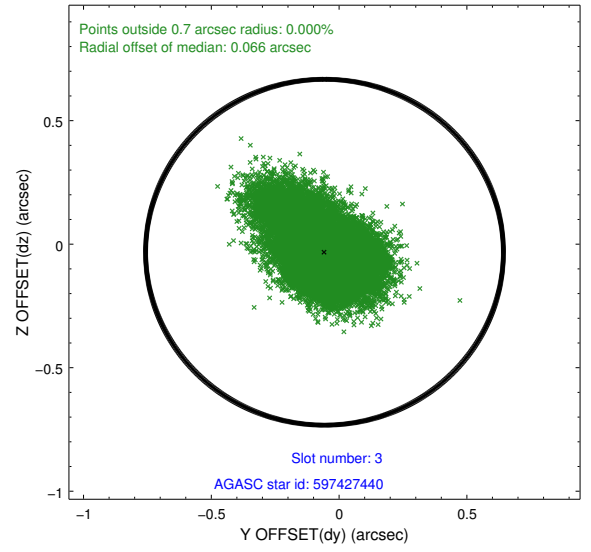
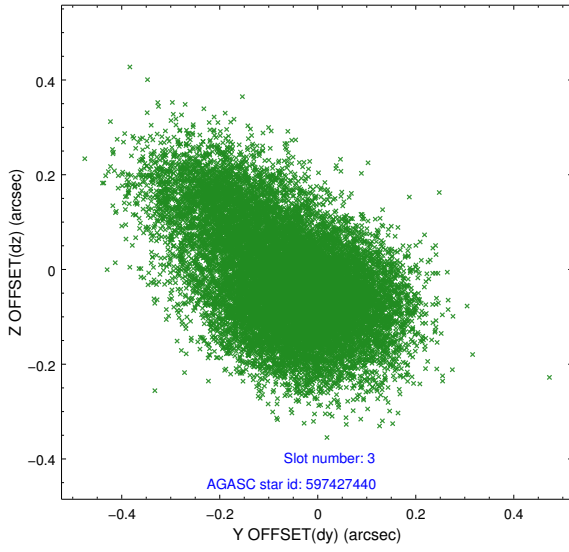


Slot Statistics

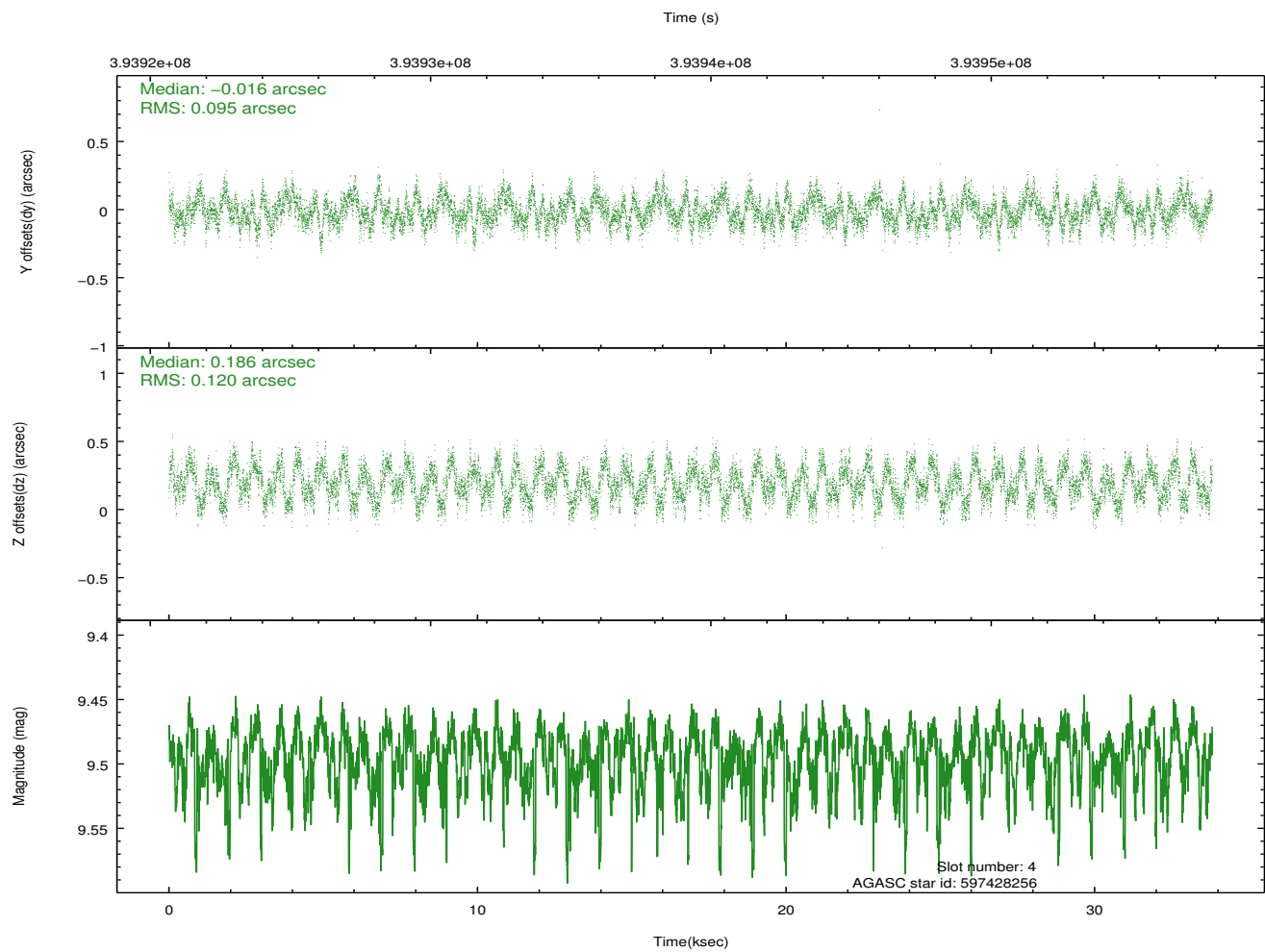
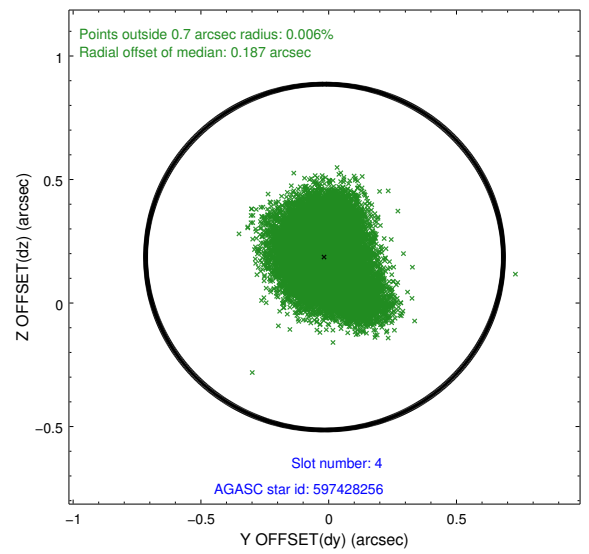
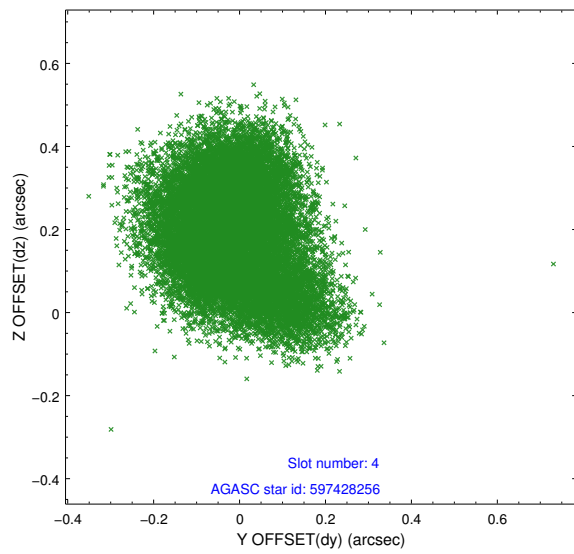
slot	status	id	mag	n_pts	med_dy	med_dz	dr1	dr2	ra	dec	mean_y	mean_z
0	FID	ACIS-I-2	6.95	8245	-0.090	-0.083	0.016	0.039	0.000000	0.000000	-766.67	-967.76
1	FID	ACIS-I-4	6.93	8247	0.126	0.077	0.019	0.050	0.000000	0.000000	2147.53	938.54
2	FID	ACIS-I-5	7.00	8247	-0.139	0.075	0.020	0.044	0.000000	0.000000	-1820.21	935.60
3	GUIDE	597427440	9.79	16457	-0.057	-0.033	0.164	0.286	205.930658	76.973401	1833.34	-1418.68
4	GUIDE	597428256	9.49	16440	-0.016	0.186	0.166	0.257	206.850716	77.153199	926.85	-1033.58
5	GUIDE	597429712	9.46	16476	0.232	0.015	0.119	0.183	208.773602	77.254459	-100.49	161.25
6	GUIDE	597438624	9.55	16400	0.029	-0.046	0.132	0.214	209.109221	77.455933	-864.52	48.20
7	GUIDE	597439312	7.23	16491	-0.184	-0.137	0.079	0.120	208.802268	76.500920	2277.10	1466.95

2.4 Star Slots

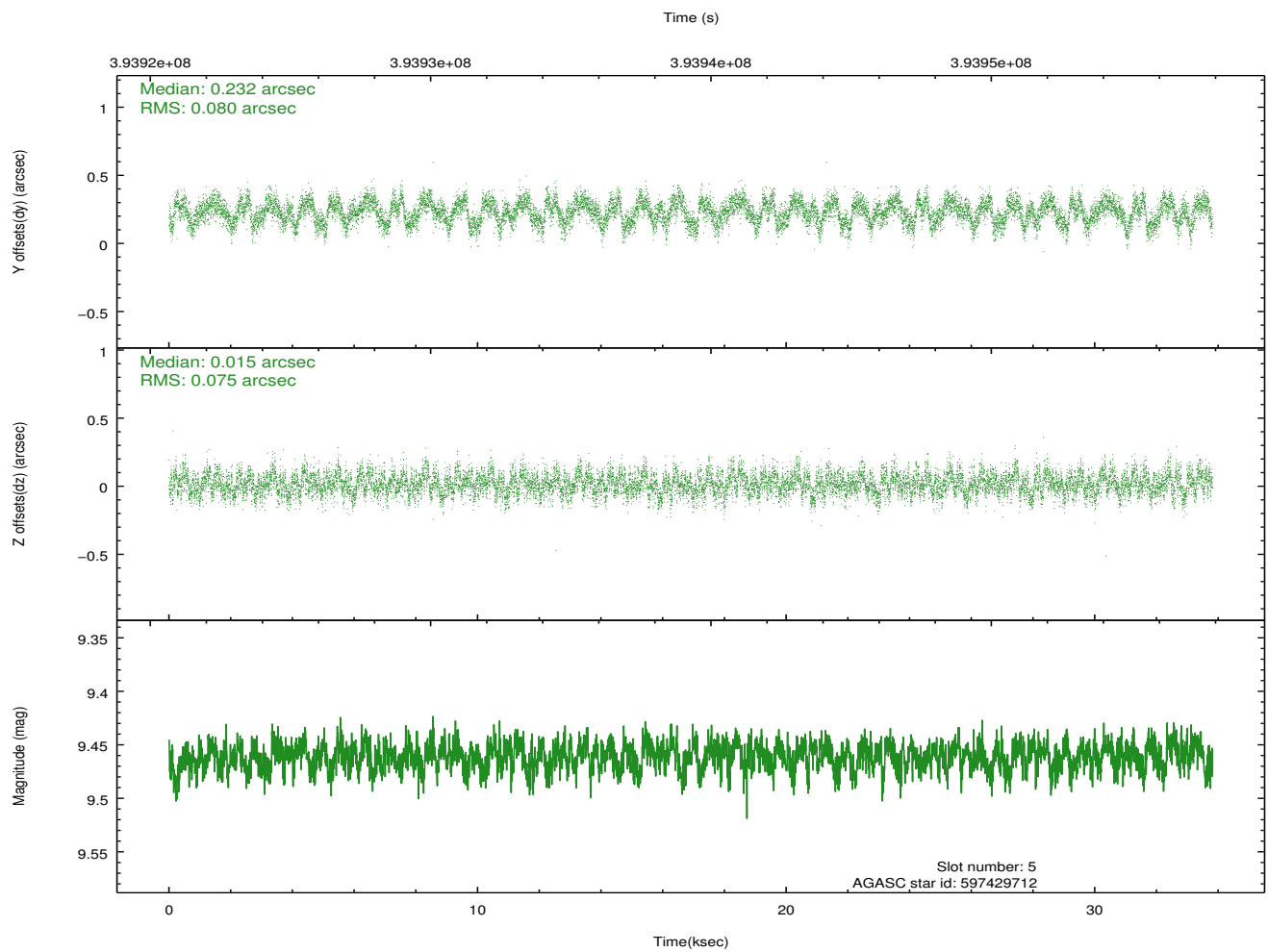
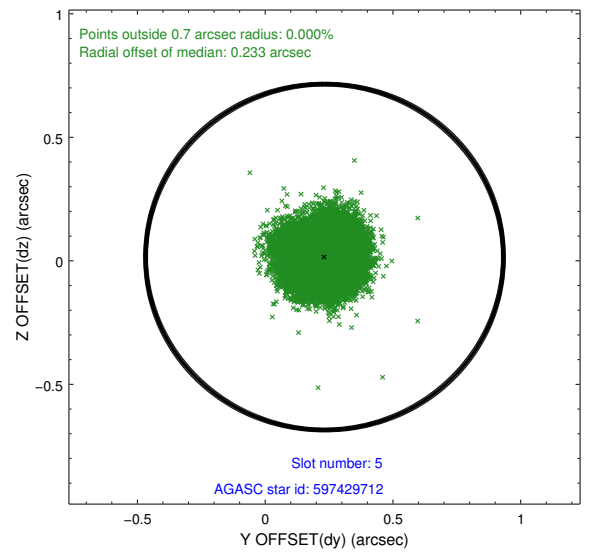
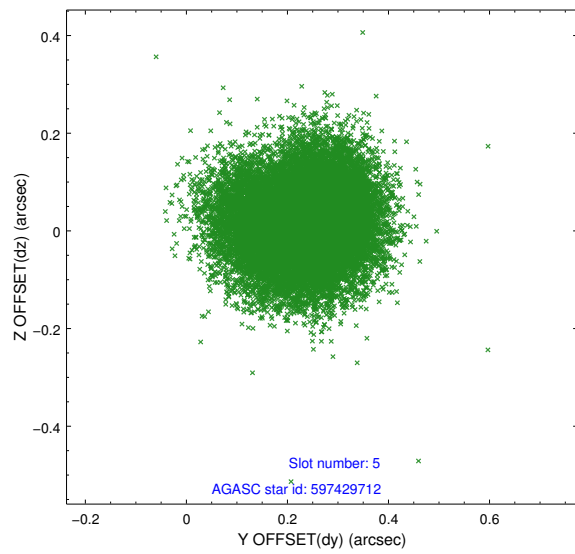
2.4.1 Slot 3



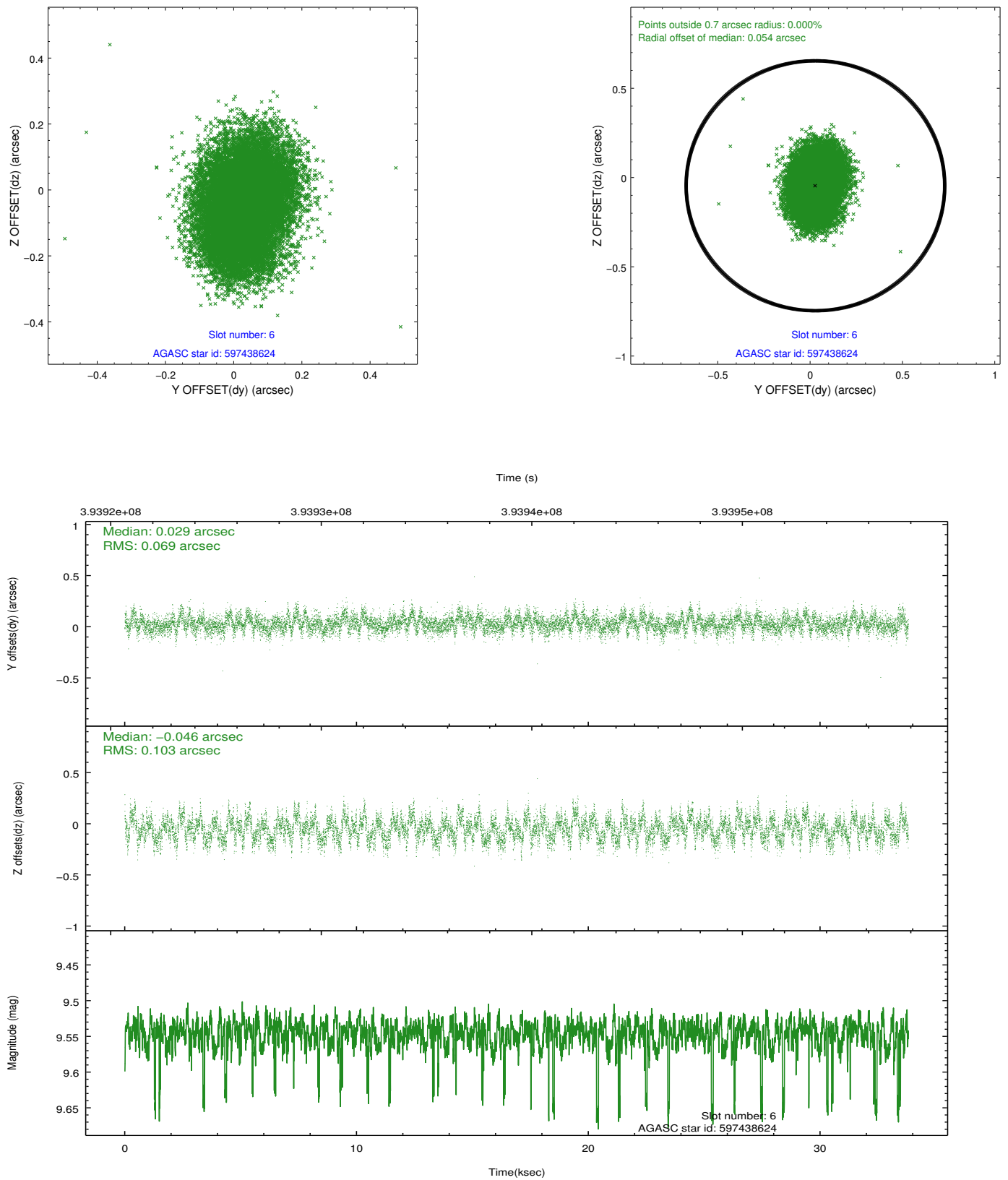
2.4.2 Slot 4



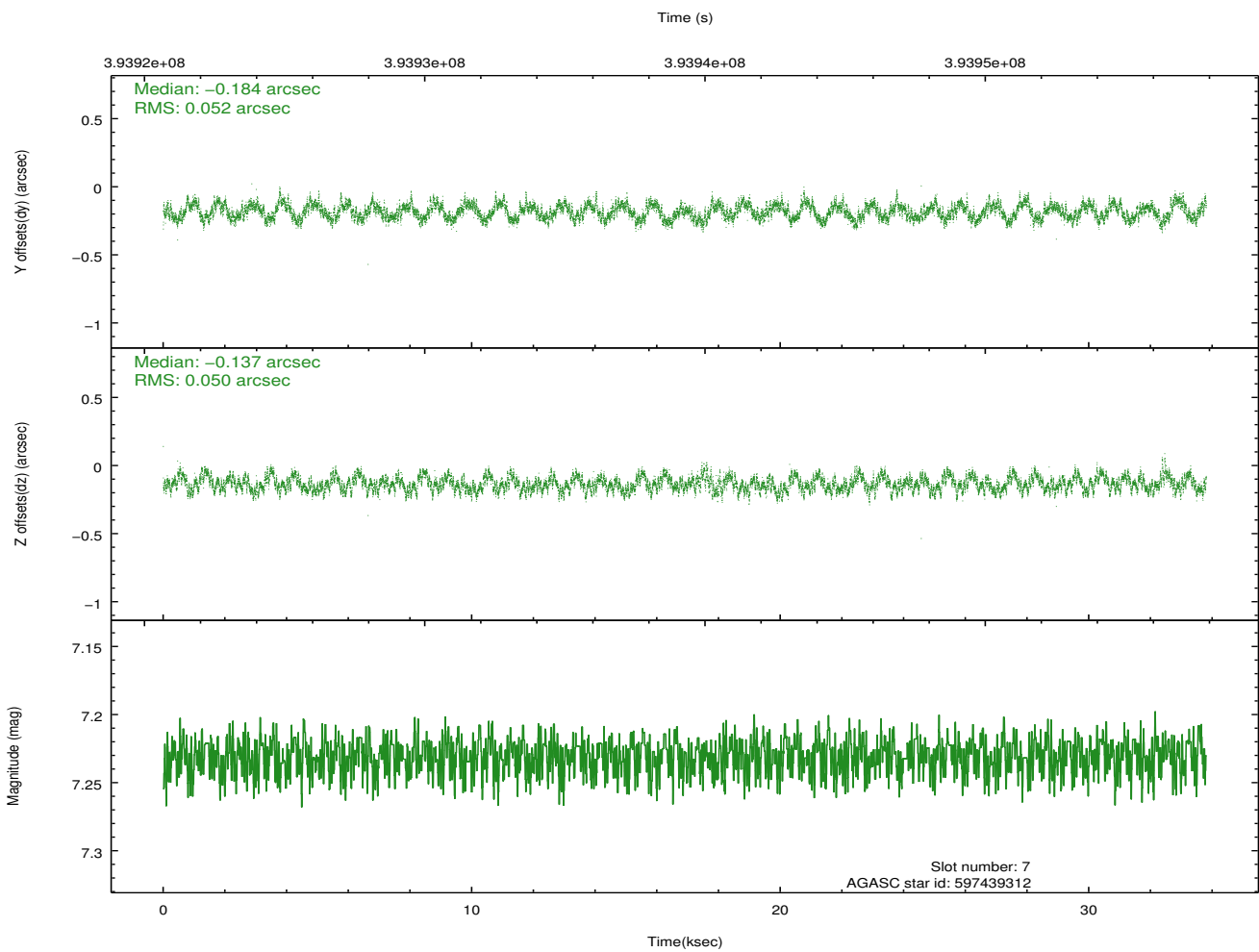
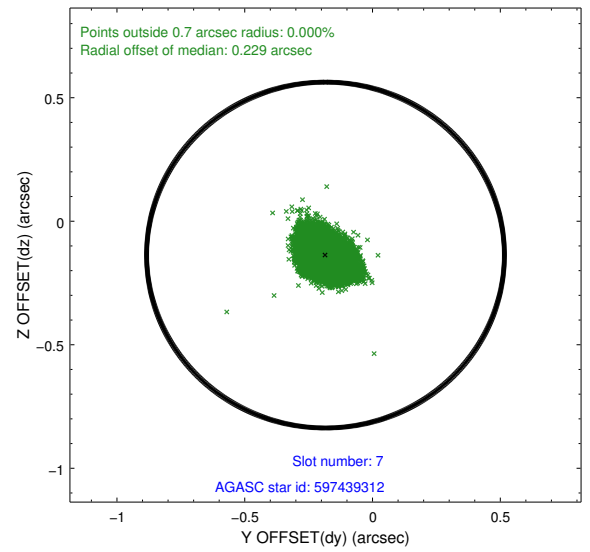
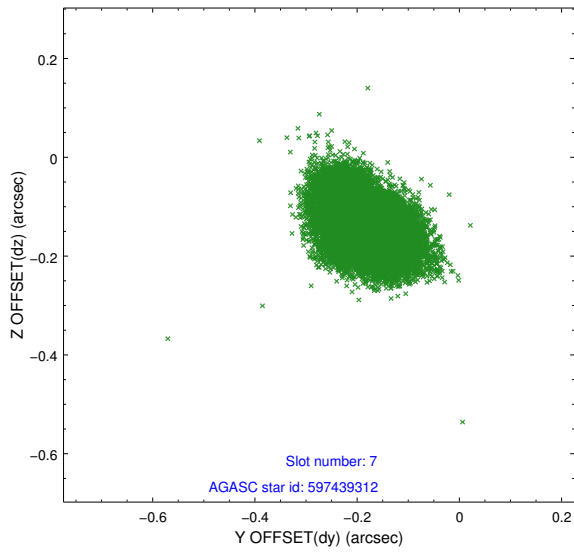
2.4.3 Slot 5



2.4.4 Slot 6

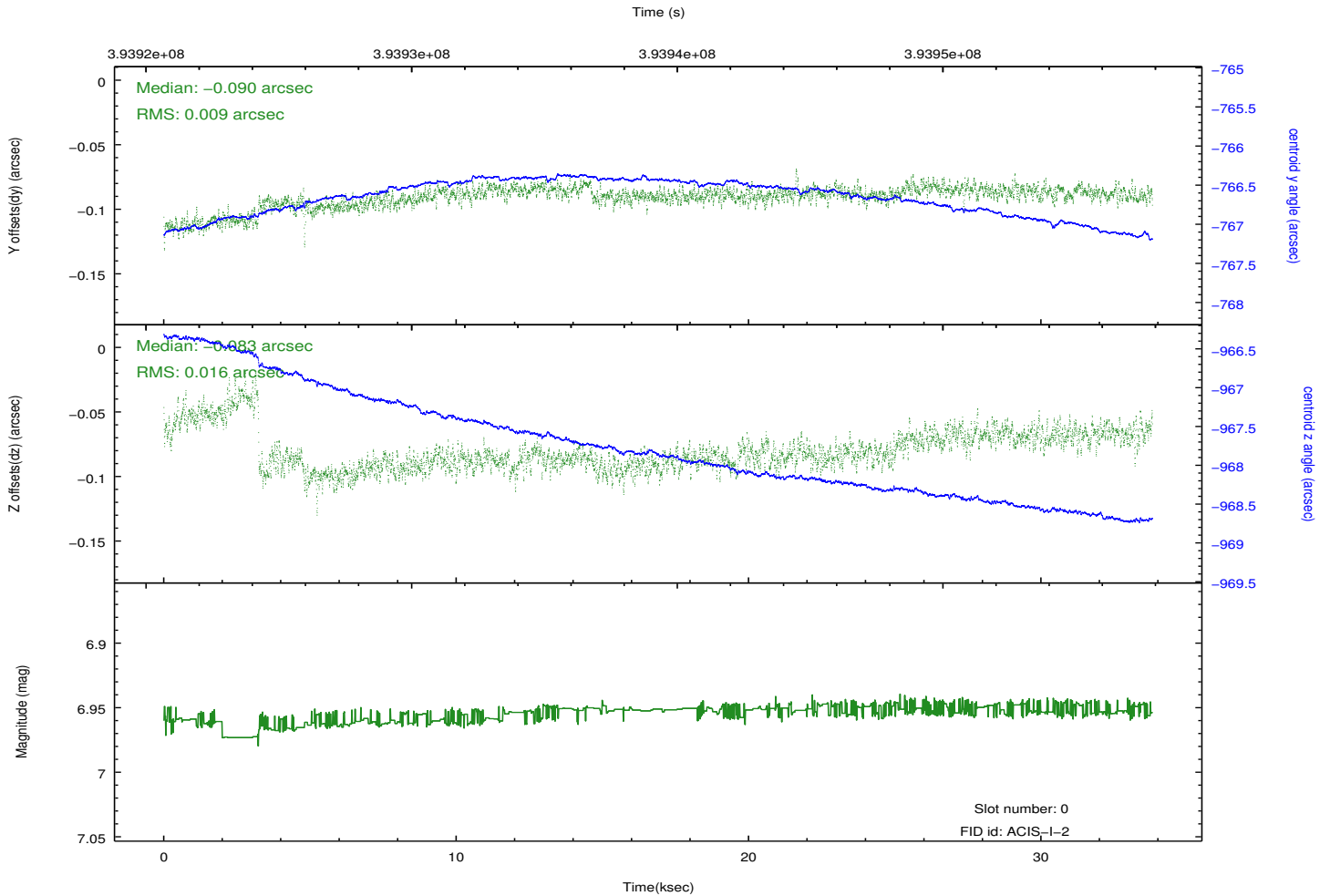
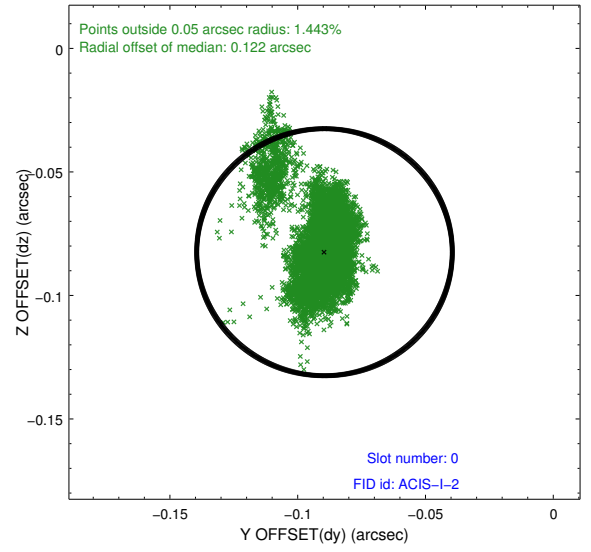
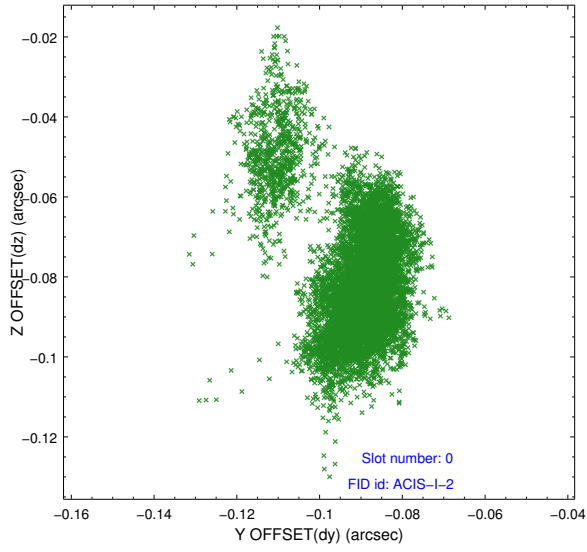


2.4.5 Slot 7

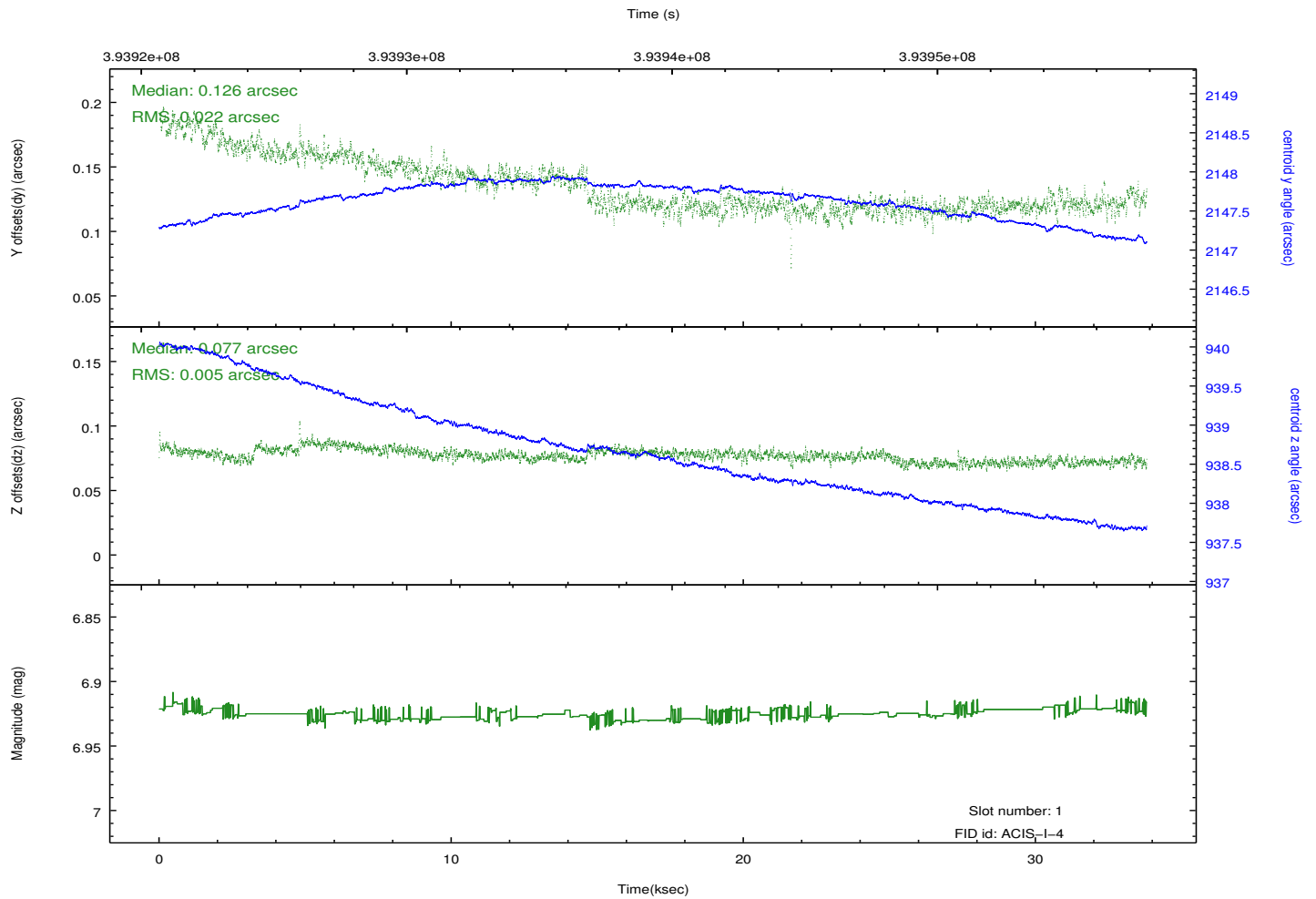
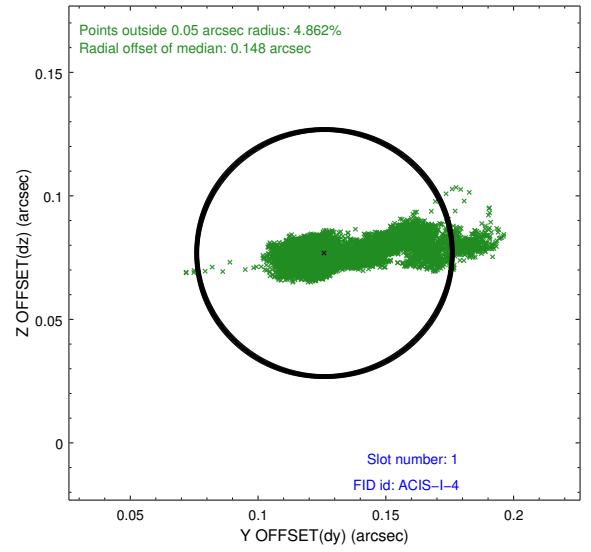
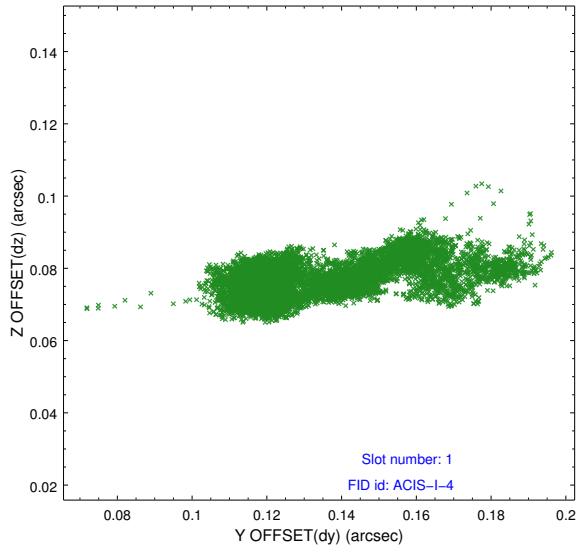


2.5 FID Slots

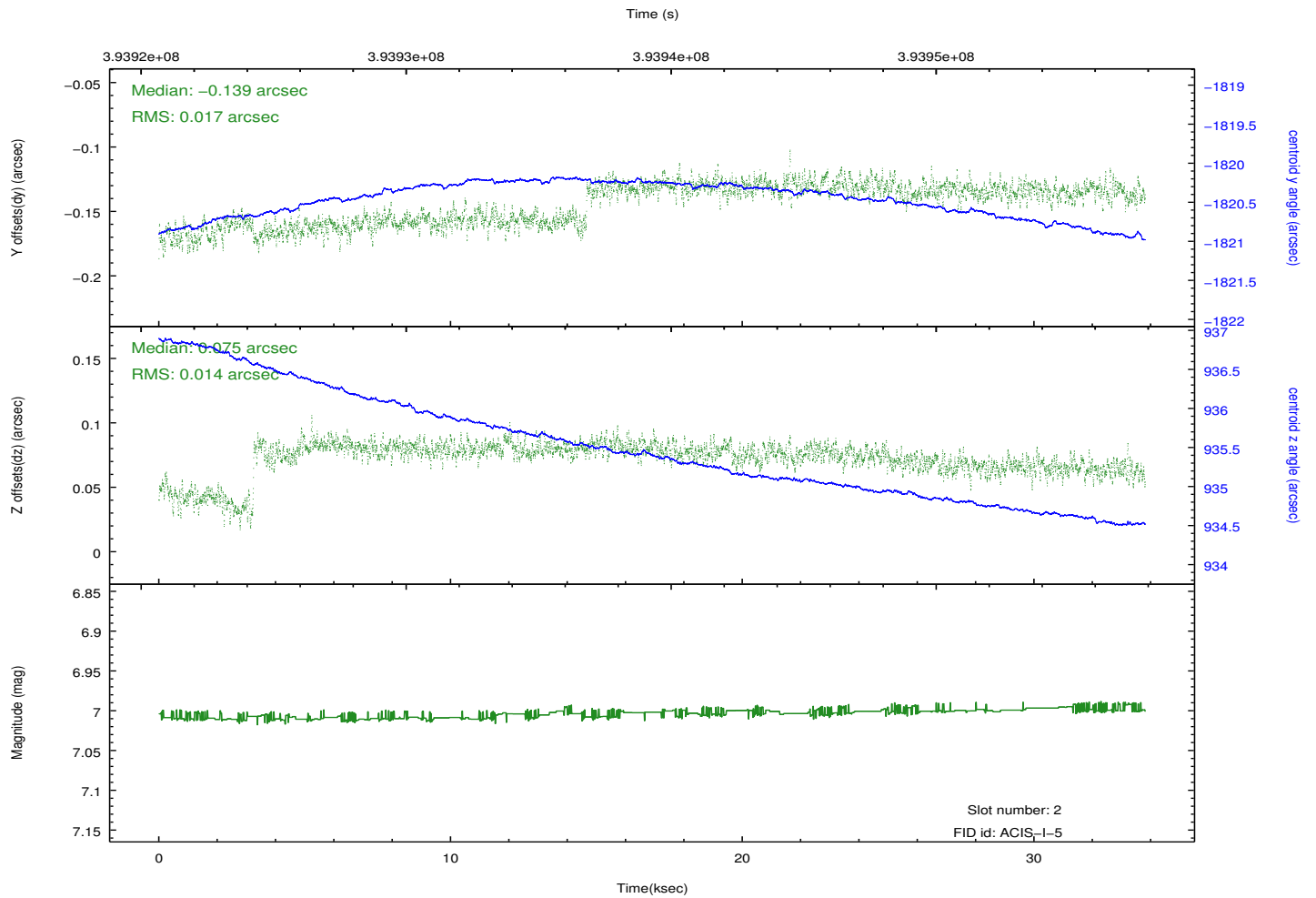
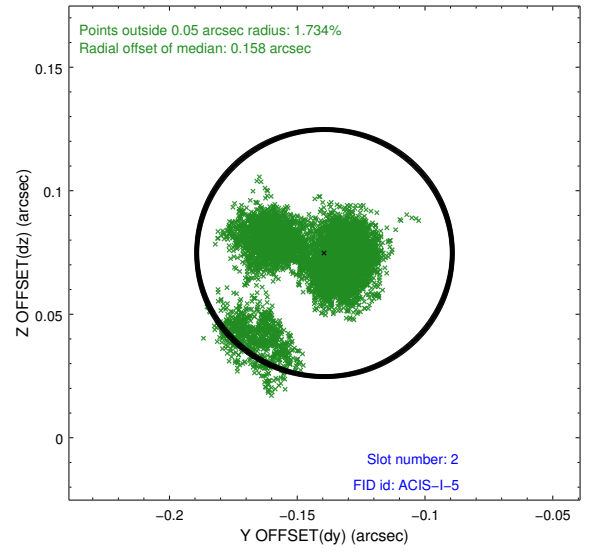
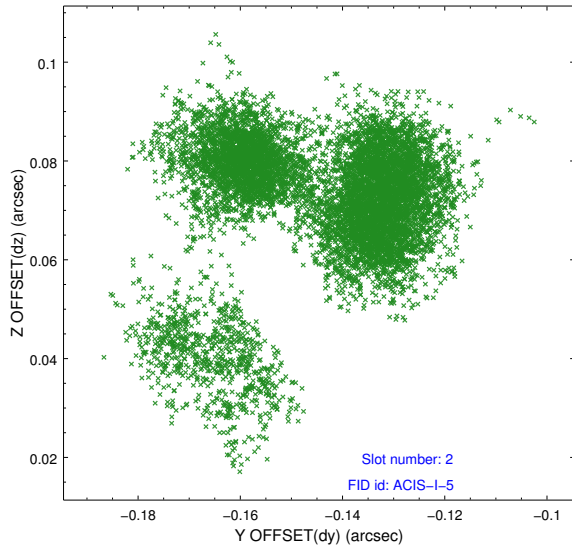
2.5.1 Slot 0



2.5.2 Slot 1



2.5.3 Slot 2



A Summary

A.1 Status

V&V Scientist	Jen Lauer
V&V Date (YYYY-MM-DD)	2012.07.06
V&V Edition	1
V&V Disposition and Status	OK
V&V Charge Time	33.042777313352

A.2 Comments