

V&V Reference Report

L2 ASCDS Version : 8.1.1

Observation 1224 - L2 Version 4
Chandra X-Ray Center

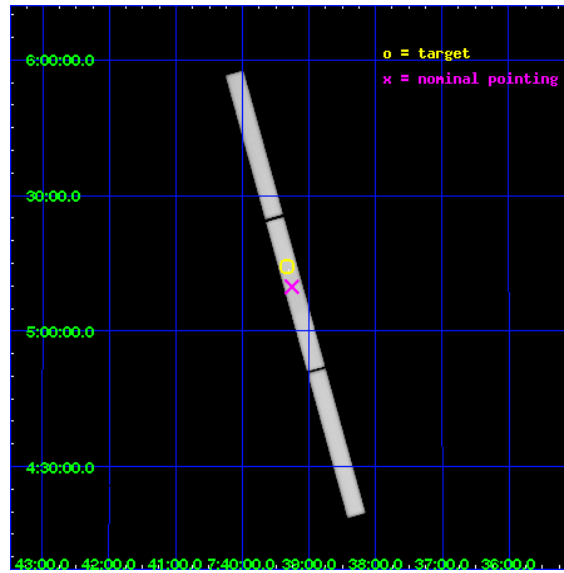
L2 Processing Date : Nov 21 2009

Contents

1	Front	2
2	OBI	3
2.1	OBI	3
2.1.1	Images	3
2.1.2	Parameters	4
2.1.3	Events	4
2.2	Compared Parameters	5
2.3	Aspect	6
2.4	Star Slots	9
2.4.1	Slot 3	9
2.4.2	Slot 4	10
2.4.3	Slot 5	11
2.4.4	Slot 6	12
2.4.5	Slot 7	13
2.5	FID Slots	14
2.5.1	Slot 0	14
2.5.2	Slot 1	15
2.5.3	Slot 2	16
3	Gratings	17
3.1	LETG Arm	17
A	Summary	19
A.1	Status	19
A.2	Comments	19

1 Front

seq_num	280174	Sequence number
obs_id	1224	Observation id
title	 	Proposal title
observer	Dr. CXC Calibration	Principal investigator
object	PROCYON	Source name
ra_targ	114.835	Observer's specified target RA
dec_targ	5.239167	Observer's specified target Dec
ra_nom	114.81411407889	Nominal RA
dec_nom	5.1639474031082	Nominal Dec
roll_nom	74.314444861902	Nominal Roll
revision	4	Processing version of data
ontime	20941.007006206	[s]
livetime	20549.540268809	Ontime multiplied by DTCOR
l2events	2207302	Number of level 2 events

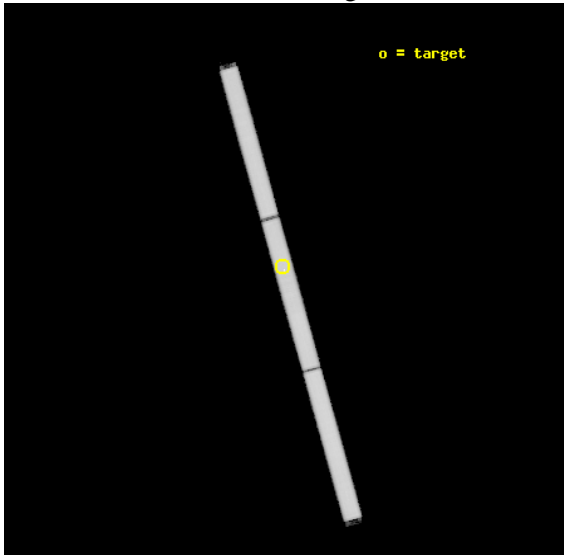


2 OBI

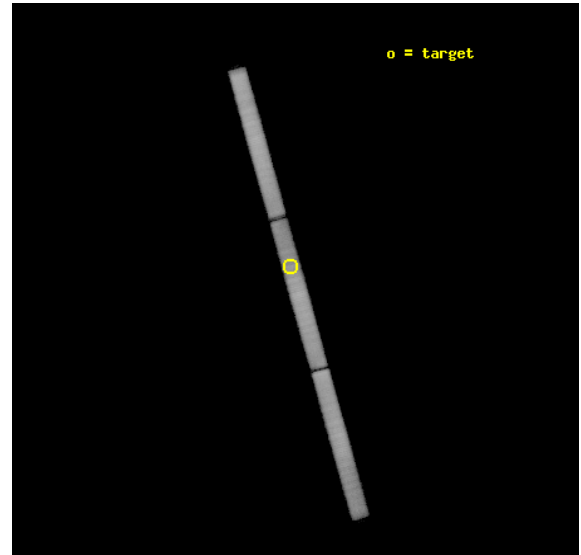
2.1 OBI

2.1.1 Images

Level 1 Image



Level 1 Bad Events



2.1.2 Parameters

obi_num	0	Obi number	sched_exp_time	20000.000000	Scheduled observation exposure time
ascdsver	8.1.1	Processing system revision	ontime	20941.007006206	[s]
caldbver	4.1.4	 	ll events	3027834	Number of level 1 events
date	2009-11-21T12:18:50	Date and time of file creation			
revision	4	Processing version of data			

2.1.3 Events

Level 1 Events

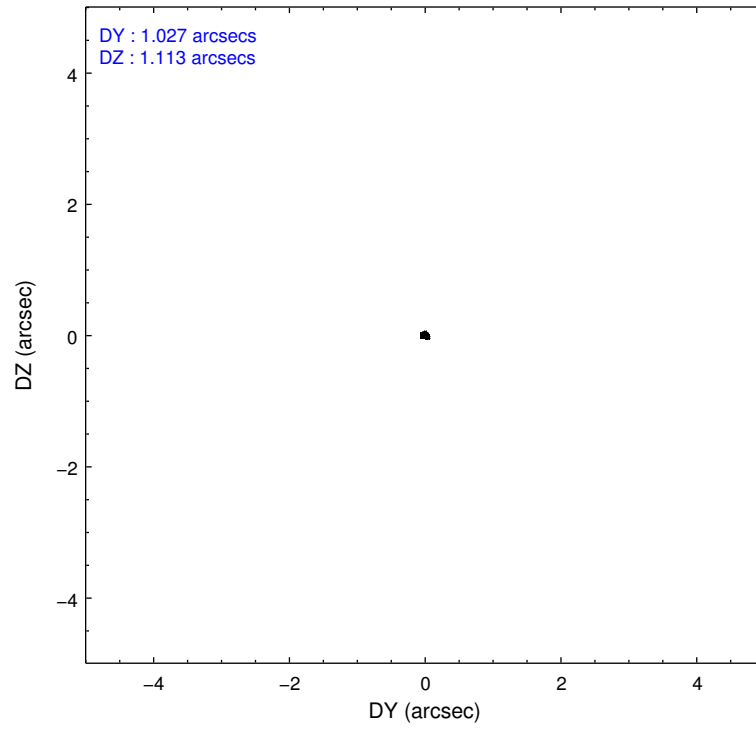
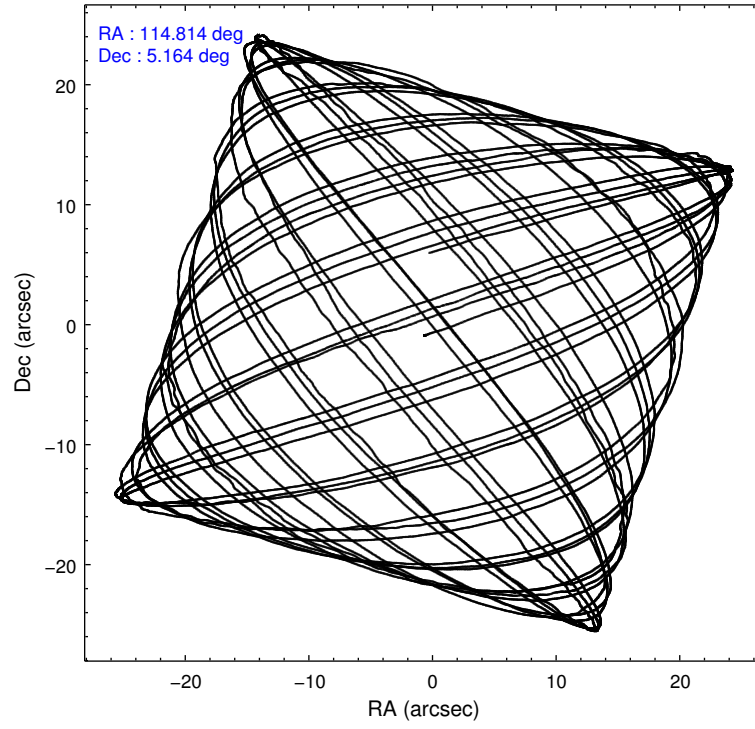
	segment 1	segment 2	segment 3
level 1 events	1078509	994567	954758
rejected events	181068	193113	241043
rejected %	16%	19%	25%

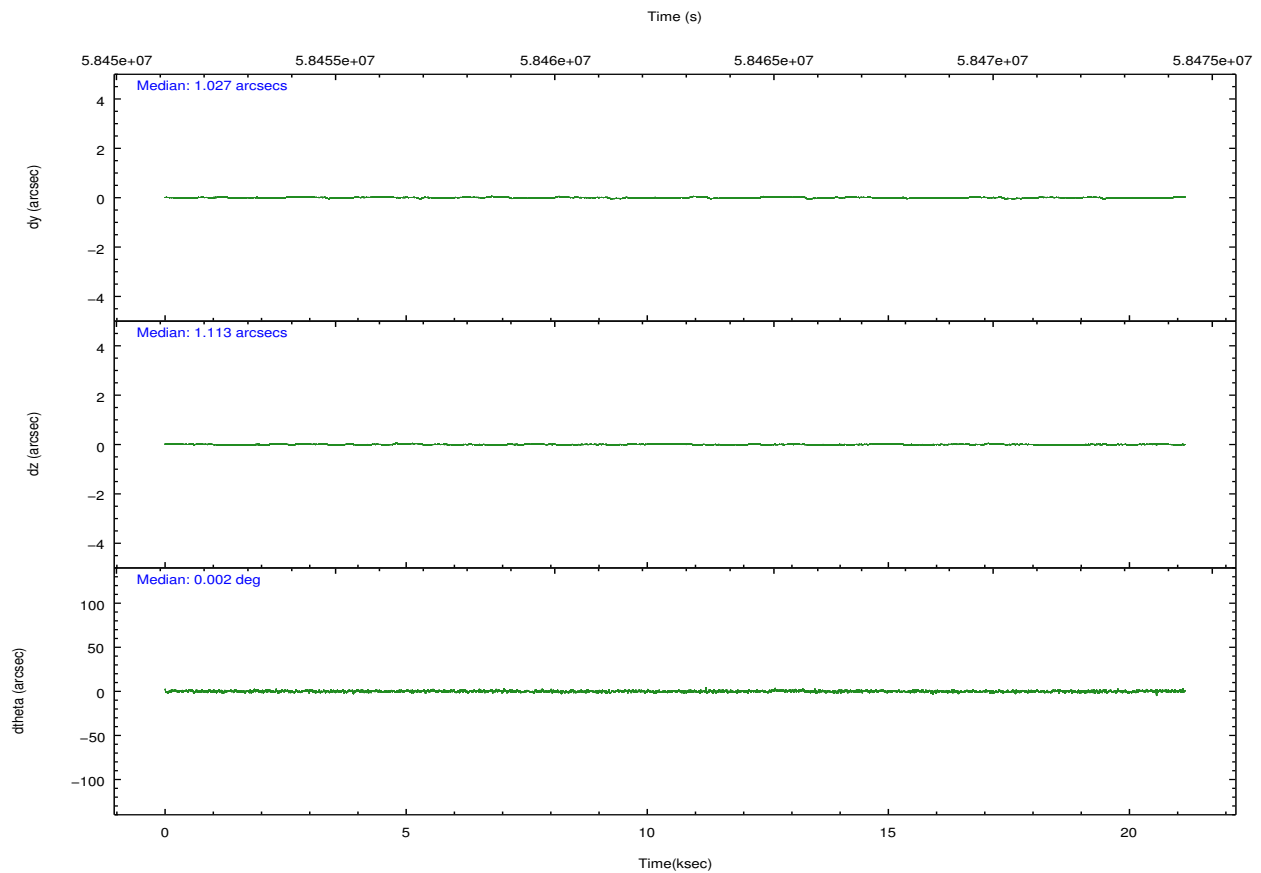
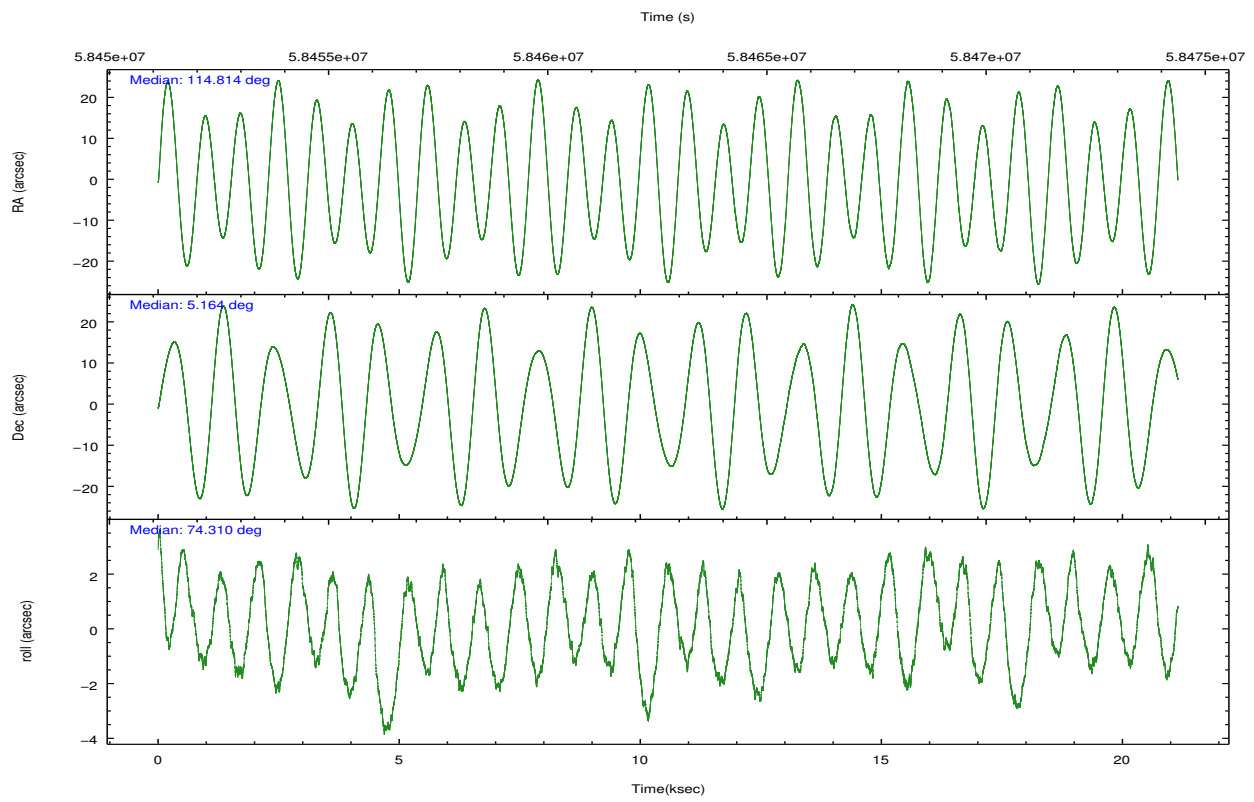
2.2 Compared Parameters

Parameter	Planned	Actual
Instrument	HRC	HRC
Detector	HRC-S	HRC-S
Grating	LETG	LETG
Data mode	OBSERVING	OBSERVING
Observation mode	POINTING	POINTING
Pointing RA	114.822148	114.8141140788878
Pointing Dec	5.136103	5.16394740310818
Pointing Roll	74.246379	74.31444486190186
SIM focus pos (mm)	-1.429586	-1.428180813131781
SIM defocus (mm)	0.1037507710433287	0.1051558262725154
SIM translation stage pos (mm)	250.455976	250.466033080201
SIM translation stage offset (mm)	0	-0.01005468664627074
Observation start time	58452654.184000	58451988.080752
Observation start date	1999-11-08T12:49:50	1999-11-08T12:39:48
Observation end time	58472654.184000	58474033.781548
Observation end date	1999-11-08T18:23:10	1999-11-08T18:47:13

Parameter	Planned	Actual
Obspar format version number	6	6
Obspar file type	PREDICTED	ACTUAL
Obspar update status	NONE	UPDATED

2.3 Aspect



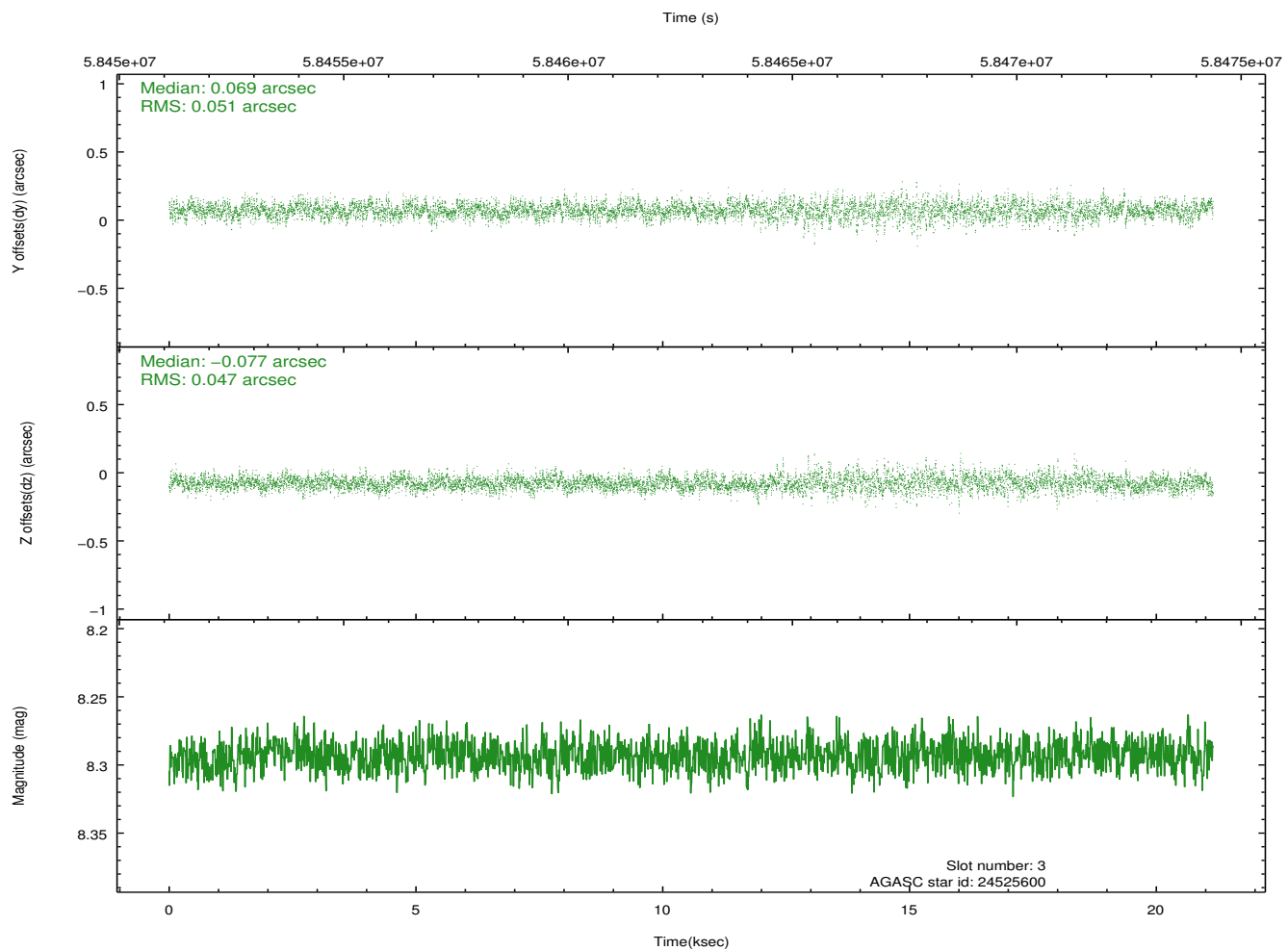
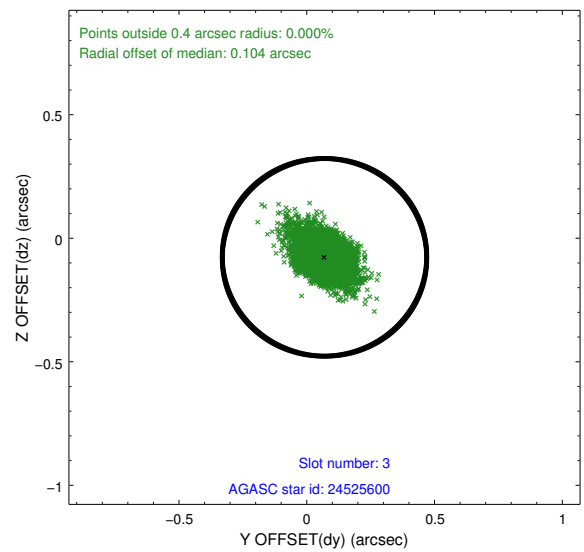
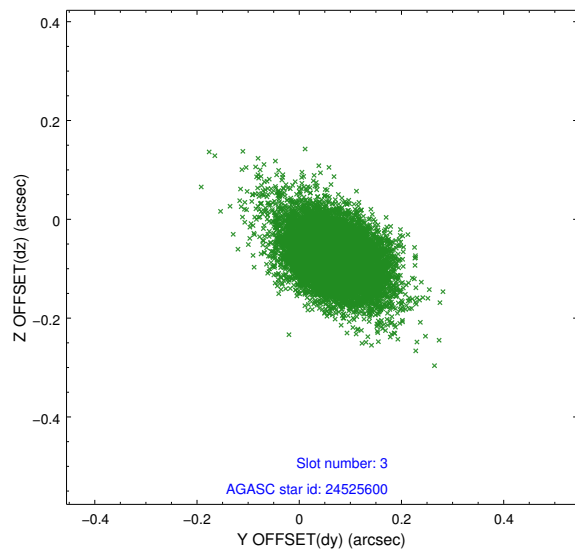


Slot Statistics

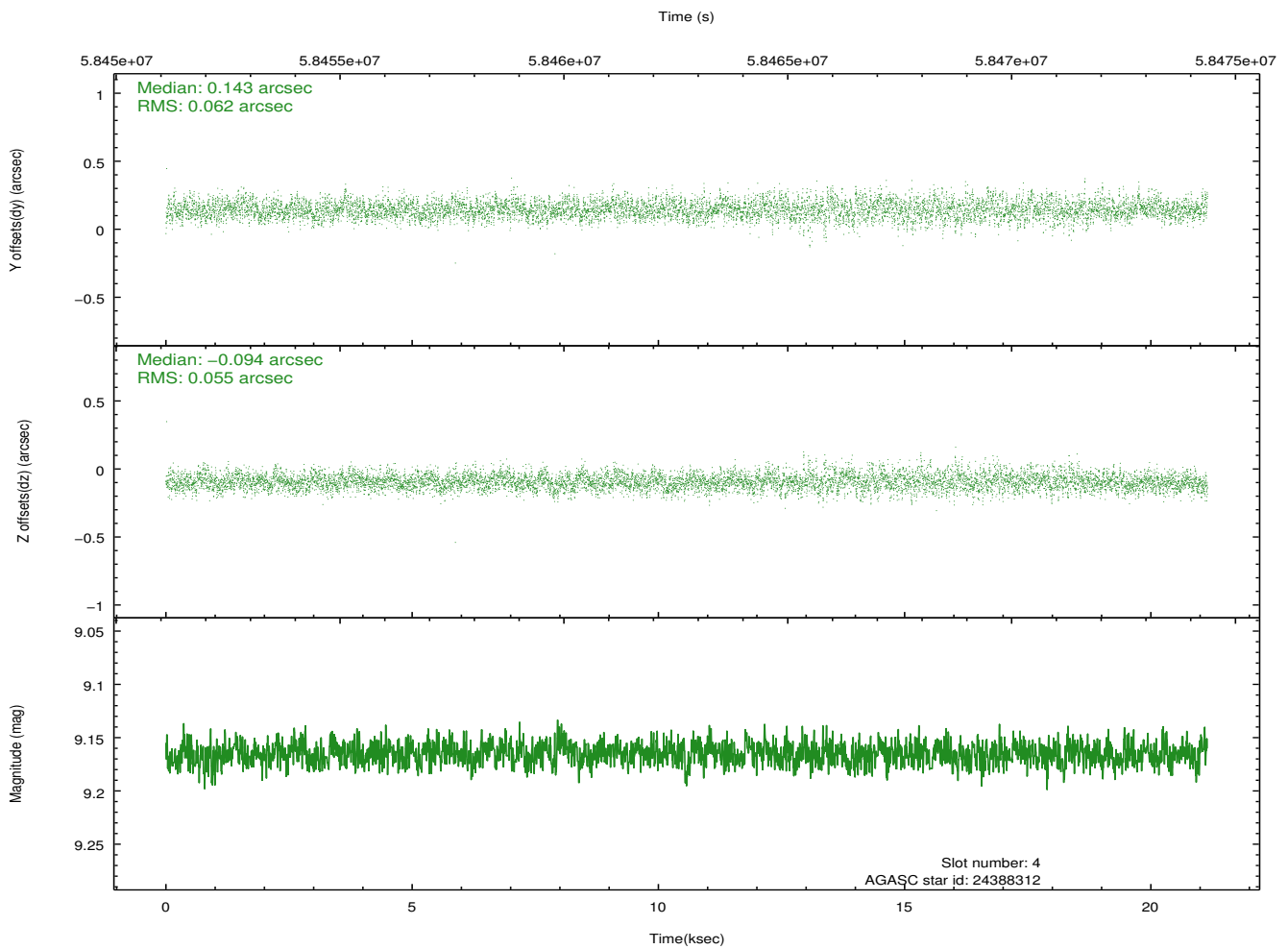
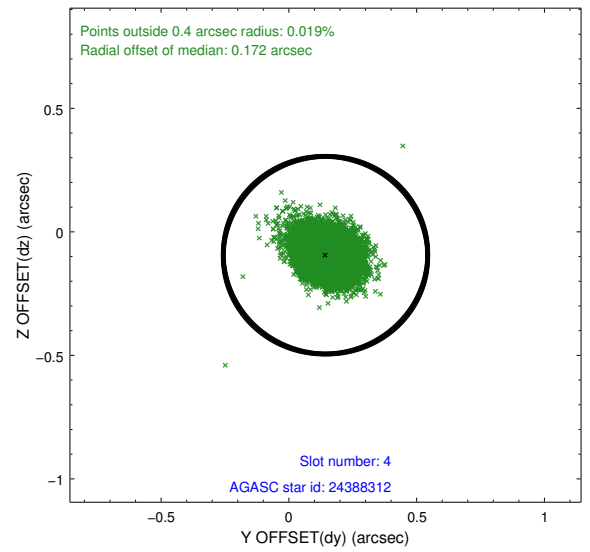
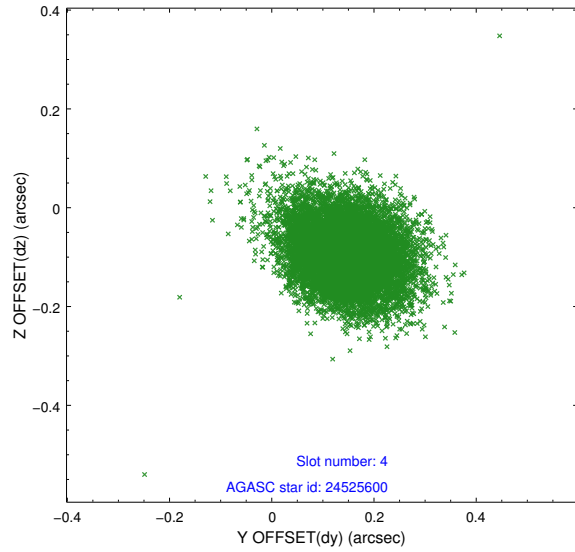
slot	status	id	mag	n_pts	med_dy	med_dz	dr1	dr2	ra	dec	mean_y	mean_z
0	FID	HRC-S-1	6.99	10317	0.137	-0.126	0.006	0.010	0.000000	0.000000	-1155.08	-449.39
1	FID	HRC-S-3	7.01	10318	0.103	-0.067	0.007	0.012	0.000000	0.000000	-1157.85	580.16
2	FID	HRC-S-4	6.98	10318	0.148	-0.103	0.005	0.009	0.000000	0.000000	1243.17	582.57
3	GUIDE	24525600	8.29	10317	0.069	-0.077	0.071	0.123	114.573999	4.942945	-911.55	668.15
4	GUIDE	24388312	9.17	10315	0.143	-0.094	0.086	0.144	114.371139	4.818554	-1539.86	1247.23
5	GUIDE	24522232	9.08	10316	0.215	-0.077	0.076	0.132	114.545065	4.637165	-1999.26	469.64
6	GUIDE	25043792	9.59	10309	-0.156	0.057	0.133	0.208	115.344328	5.638003	2246.60	-1309.05
7	GUIDE	24511384	9.38	10315	-0.273	0.193	0.108	0.173	115.347867	5.614975	2170.58	-1343.87

2.4 Star Slots

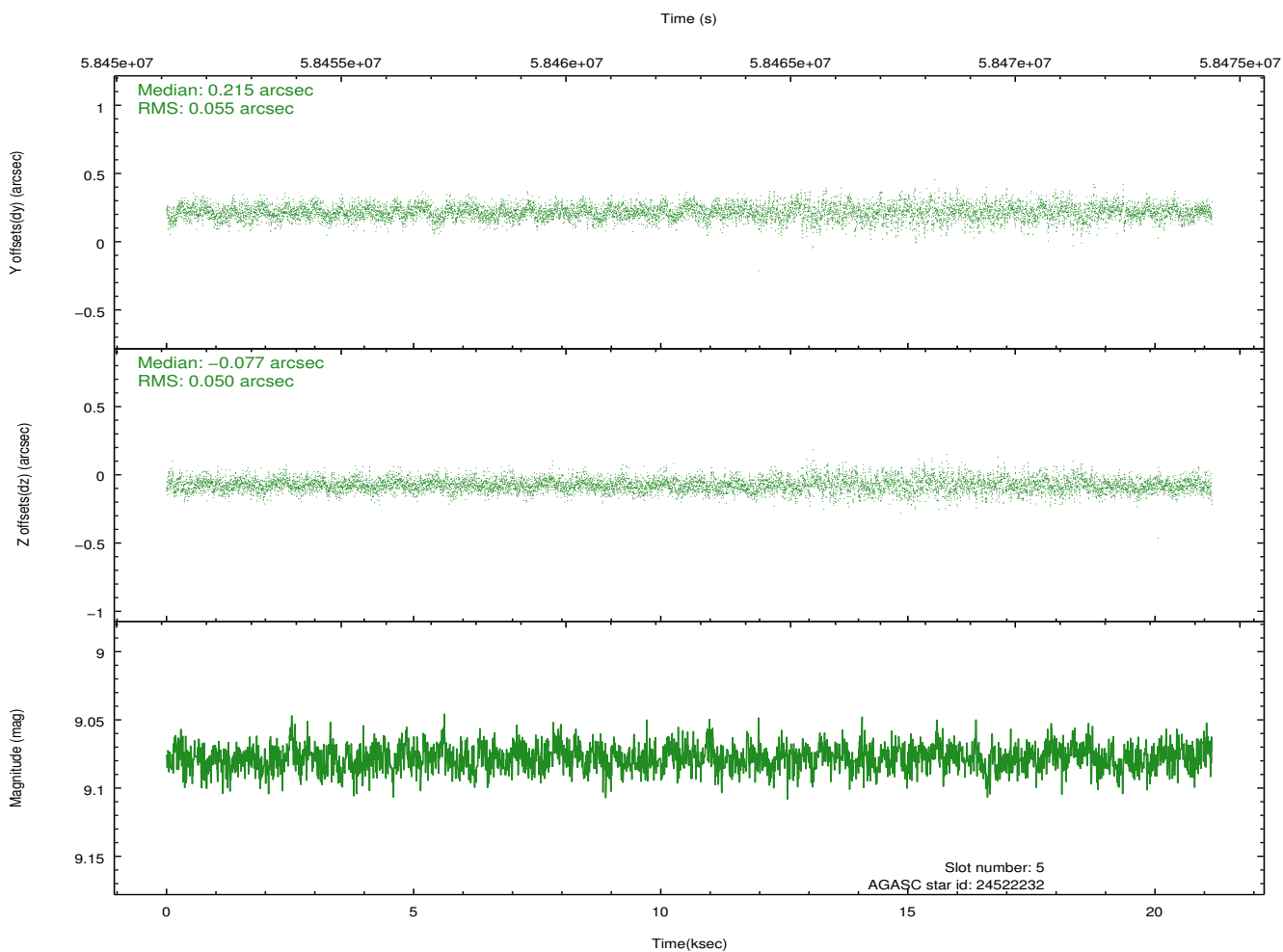
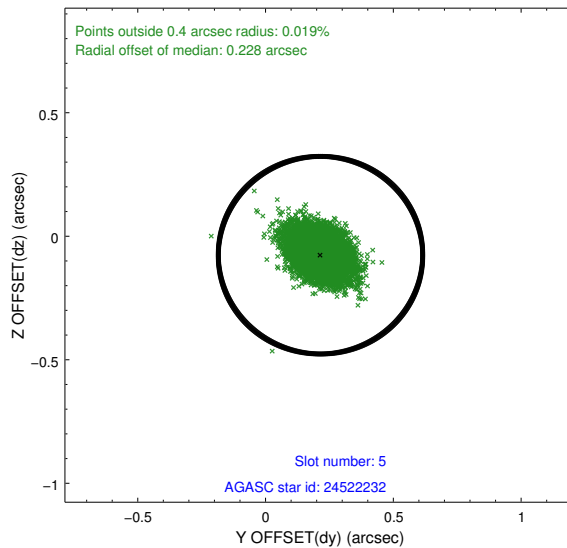
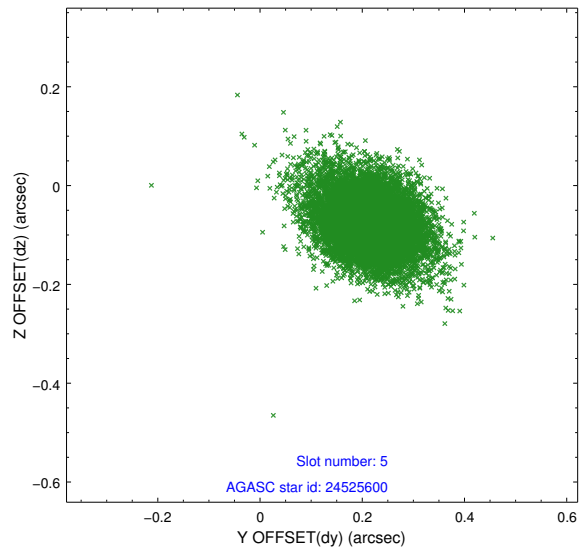
2.4.1 Slot 3



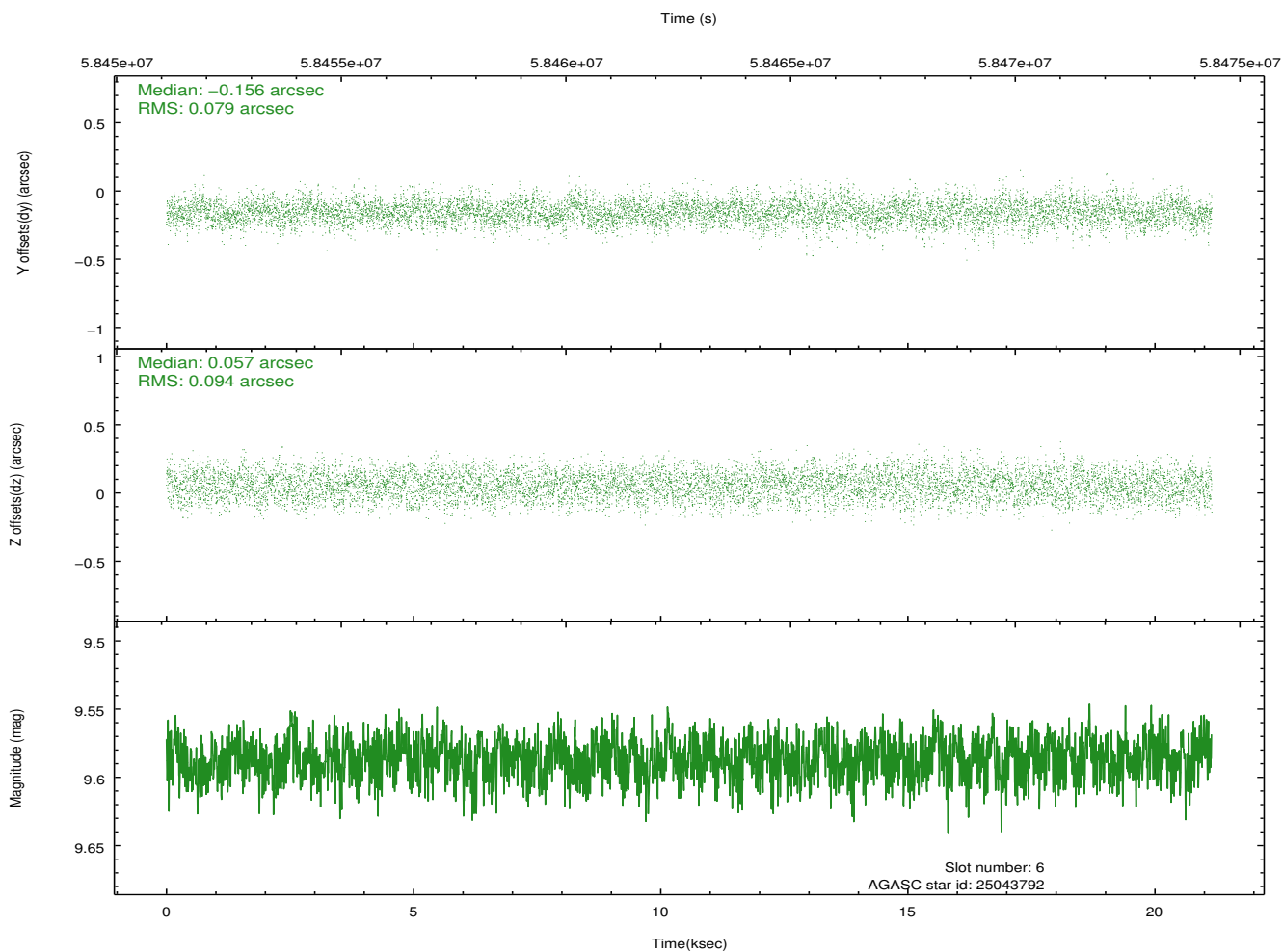
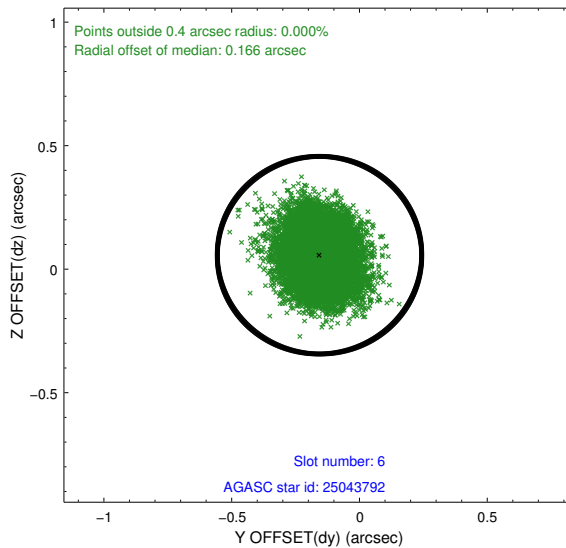
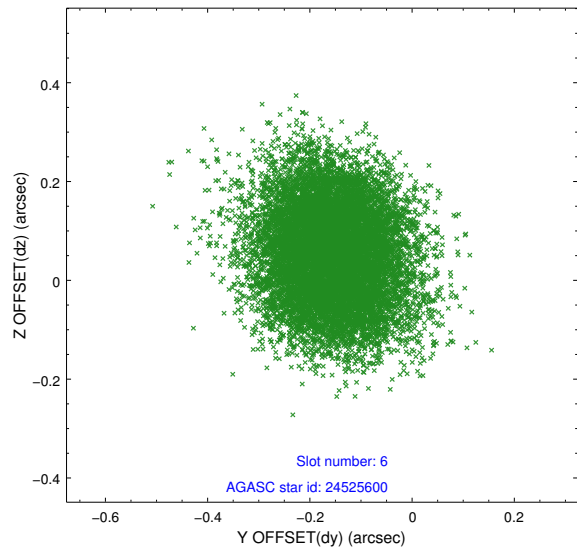
2.4.2 Slot 4



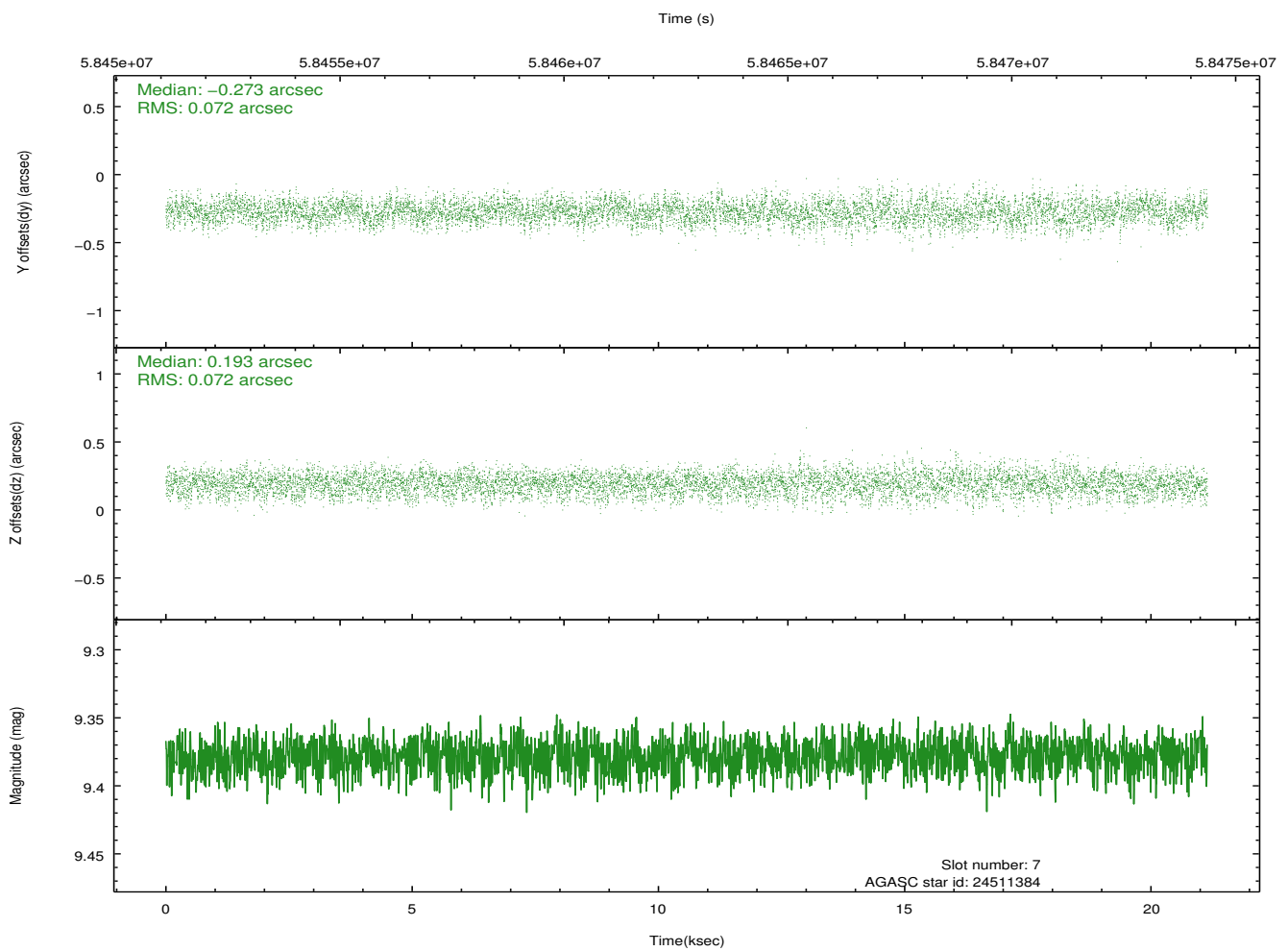
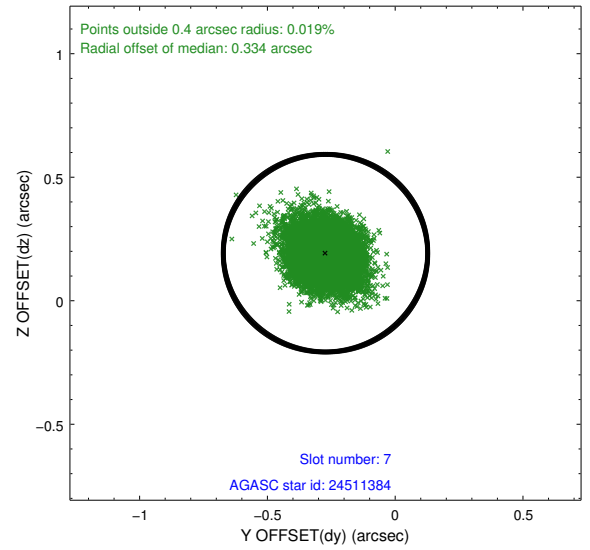
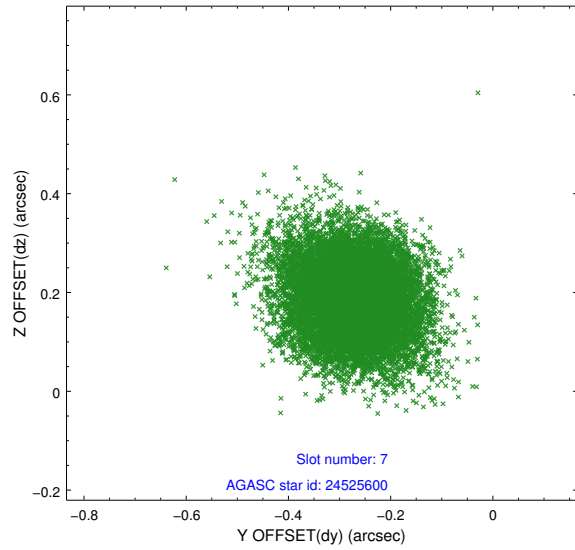
2.4.3 Slot 5



2.4.4 Slot 6

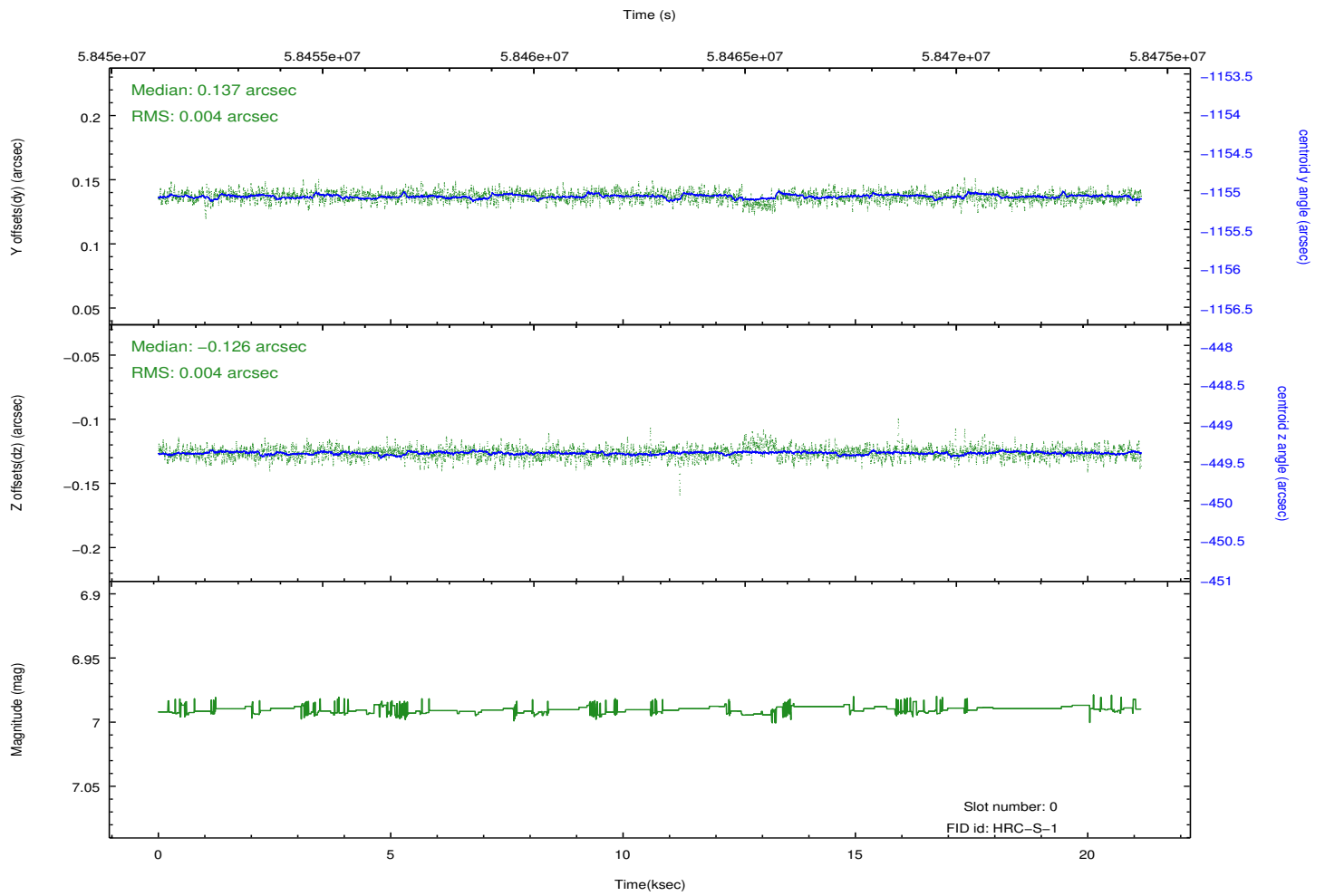
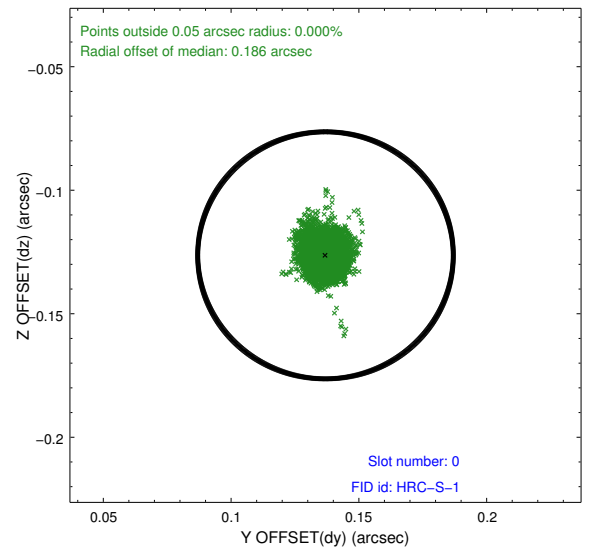
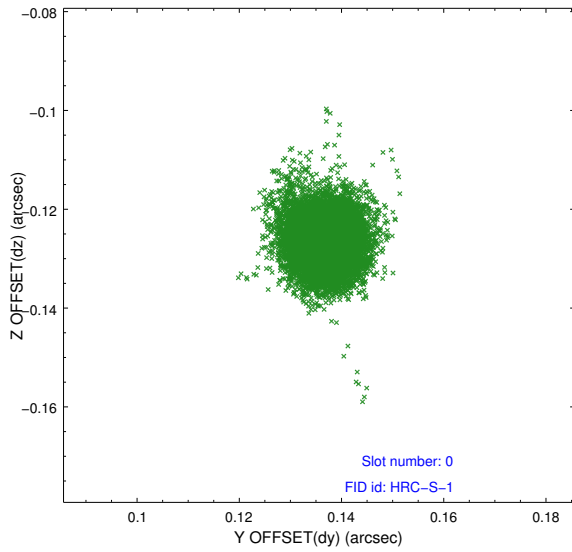


2.4.5 Slot 7

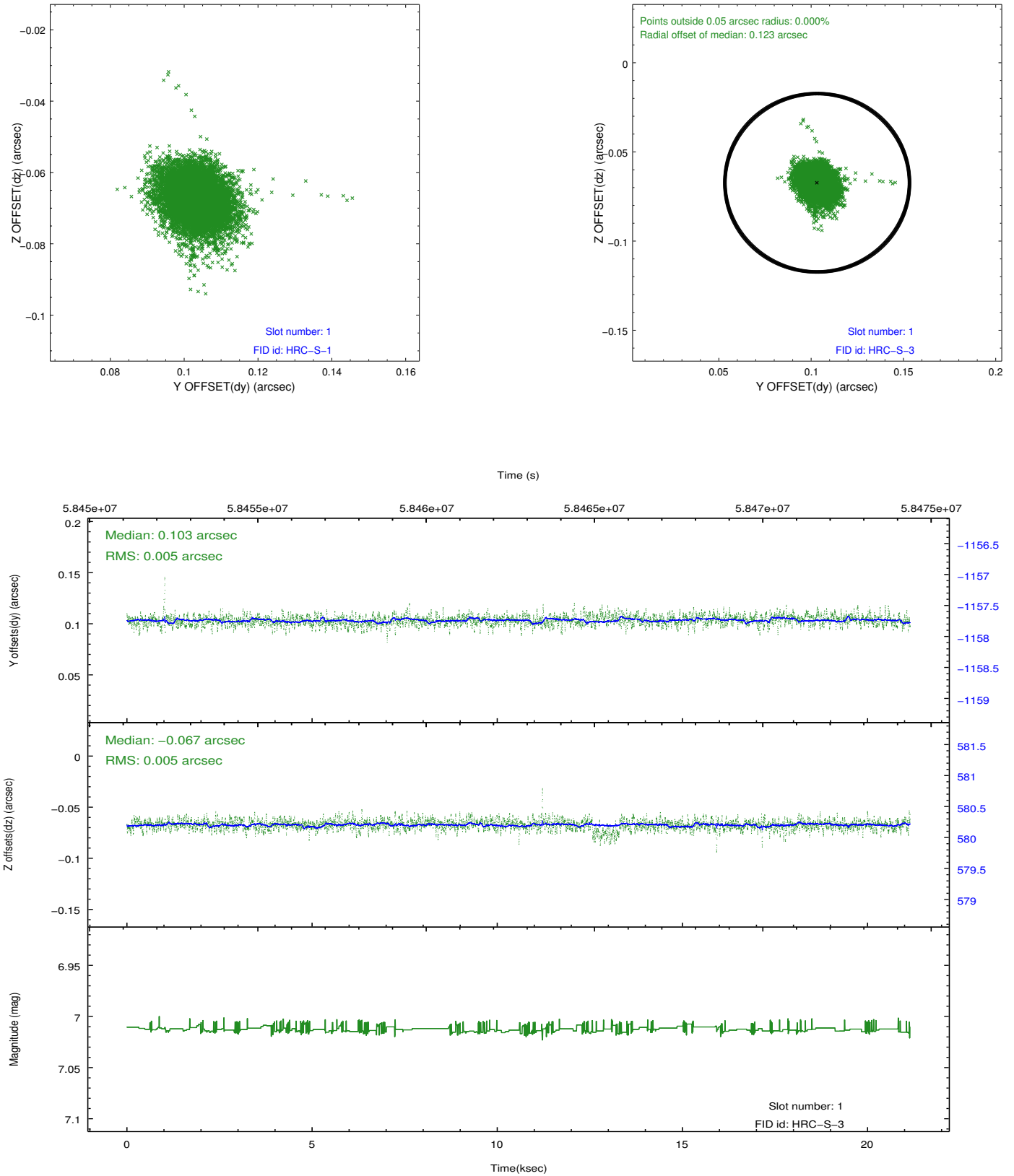


2.5 FID Slots

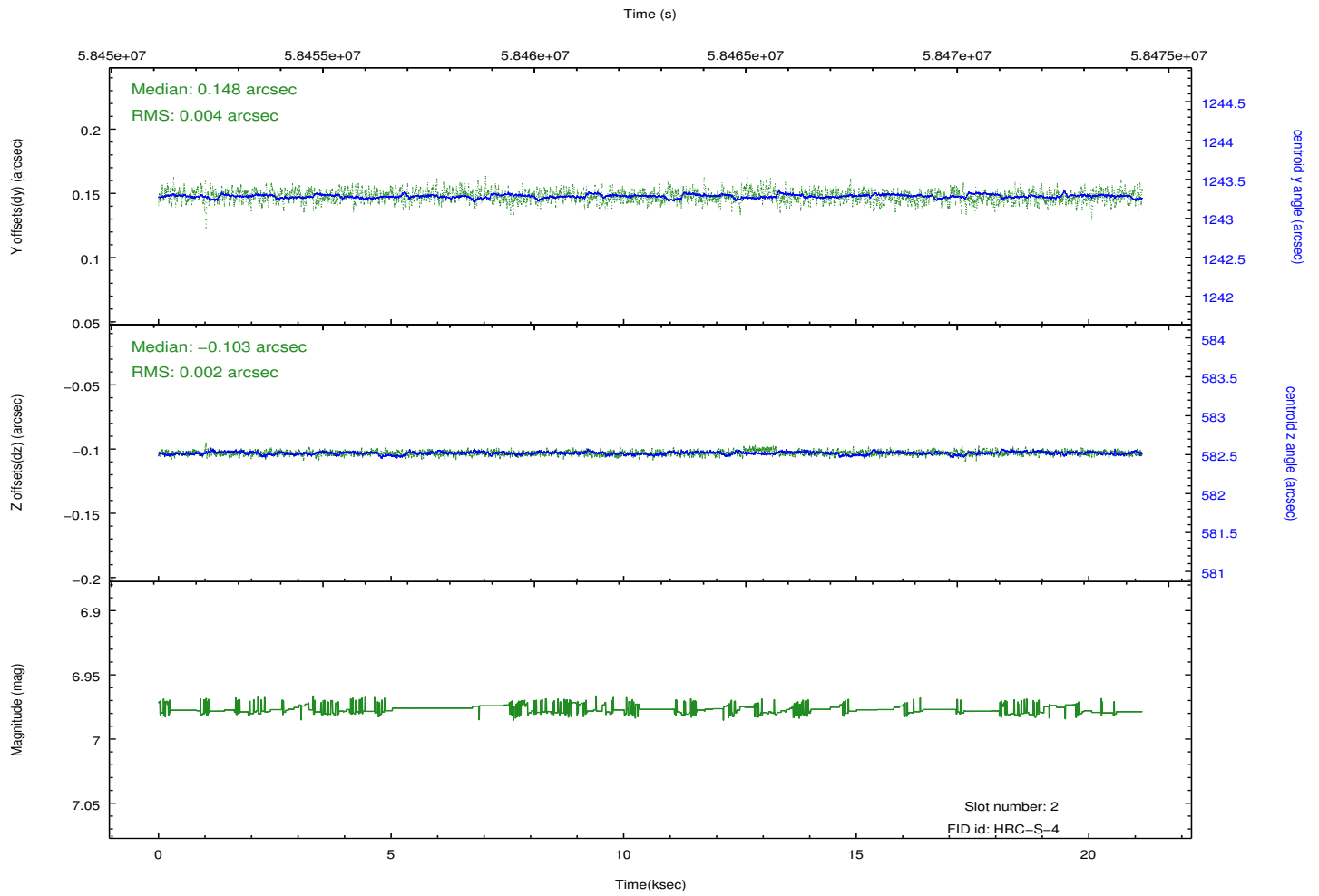
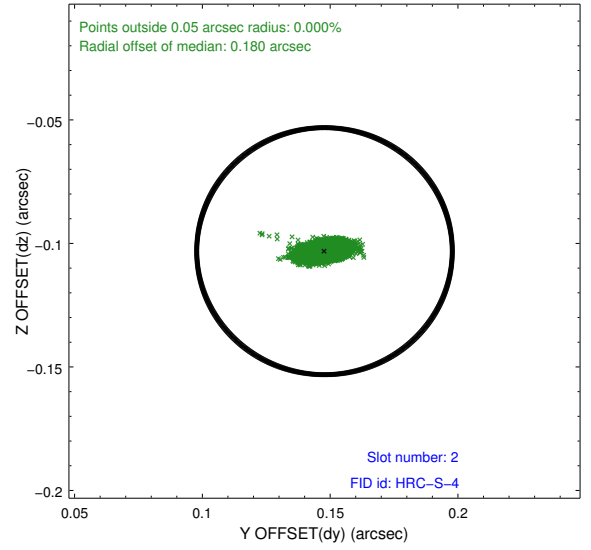
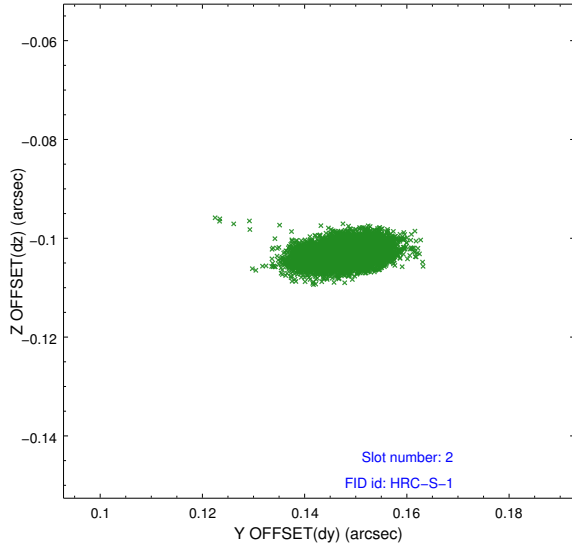
2.5.1 Slot 0



2.5.2 Slot 1

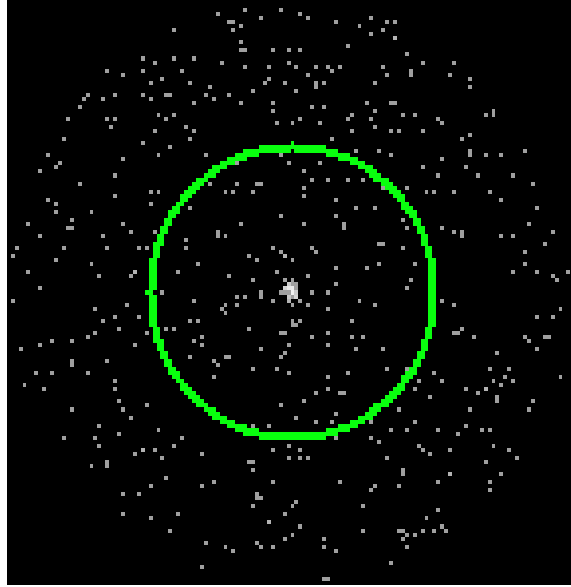


2.5.3 Slot 2

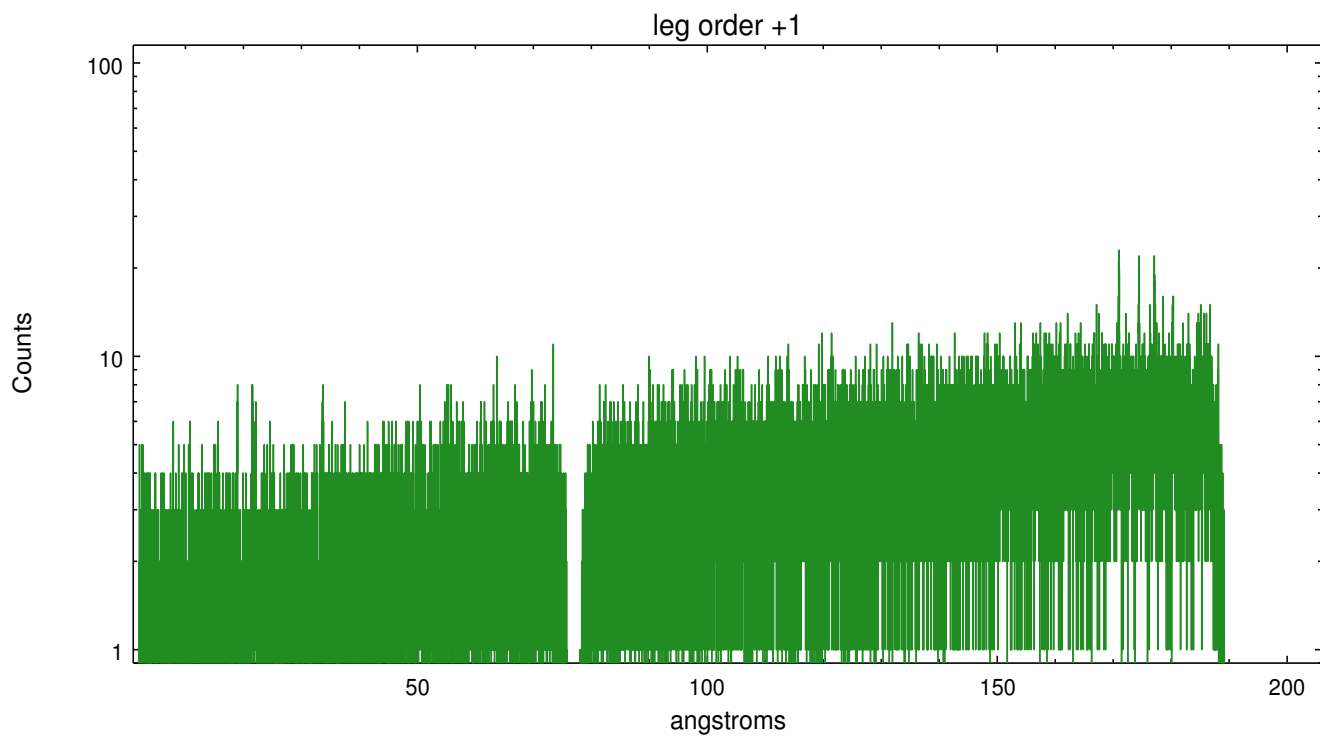
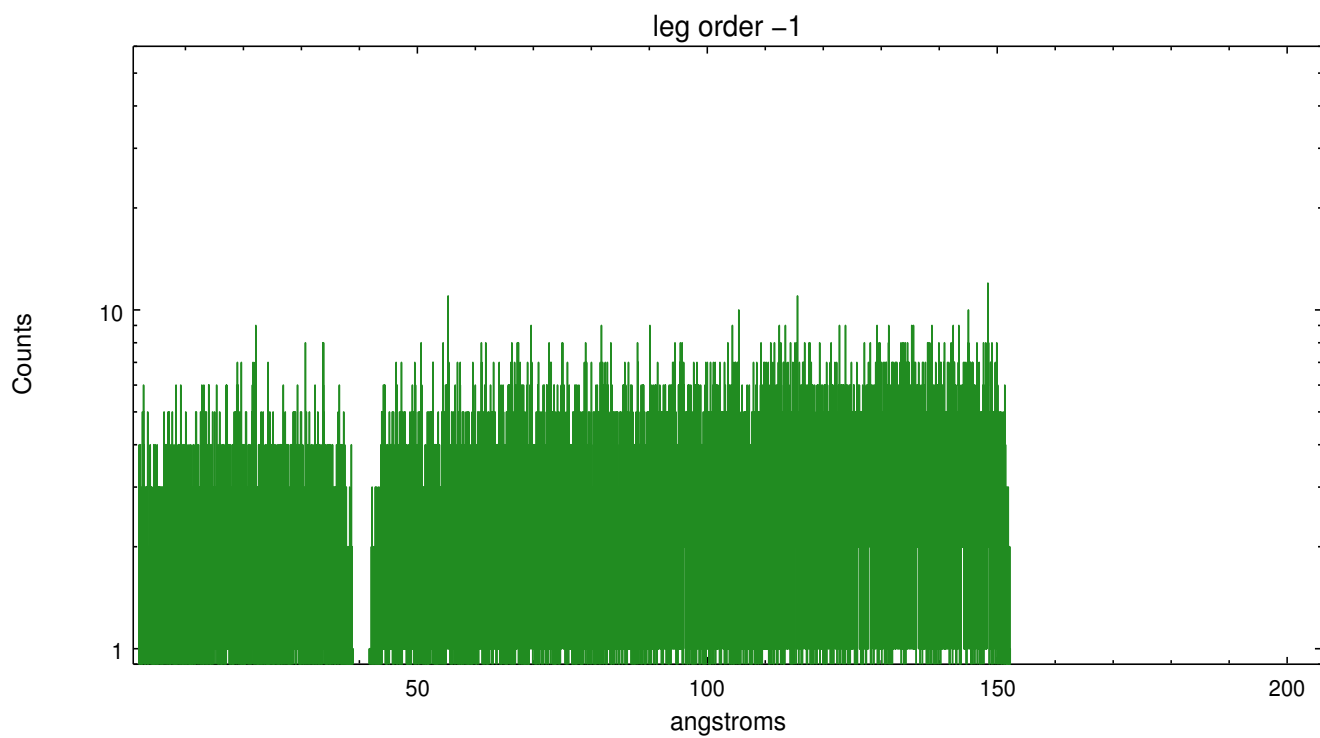


3 Gratings

3.1 LETG Arm



LETG Zero Order



A Summary

A.1 Status

V&V Scientist	Joy Nichols
V&V Date (YYYY-MM-DD)	2010.04.20
V&V Edition	1
V&V Disposition and Status	OK
V&V Charge Time	20.934

A.2 Comments

Target is off-axis, with the expected extended PSF. The off-axis placement allows one of the spectral arms to extend to 190 A.

===

There are several periods of enhanced count rate due to a high radiation environment.