

V&V Reference Report

L2 ASCDS Version : 8.4.3

Observation 12344 - L2 Version 2
Chandra X-Ray Center

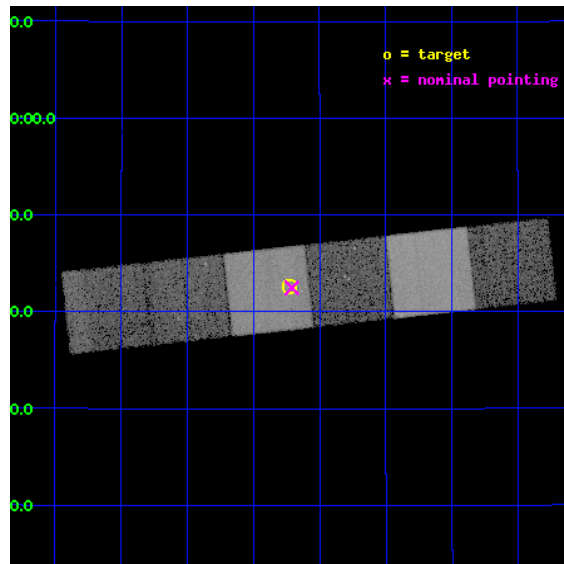
L2 Processing Date : Feb 18 2012

Contents

1	Front	2
2	OBI	3
2.1	OBI	3
2.1.1	Images	3
2.1.2	Bias	3
2.1.3	Parameters	4
2.1.4	Events	4
2.2	Compared Parameters	5
2.3	Aspect	6
2.4	Star Slots	9
2.4.1	Slot 3	9
2.4.2	Slot 4	10
2.4.3	Slot 5	11
2.4.4	Slot 6	12
2.4.5	Slot 7	13
2.5	FID Slots	14
2.5.1	Slot 0	14
2.5.2	Slot 1	15
2.5.3	Slot 2	16
A	Summary	17
A.1	Status	17
A.2	Comments	17

1 Front

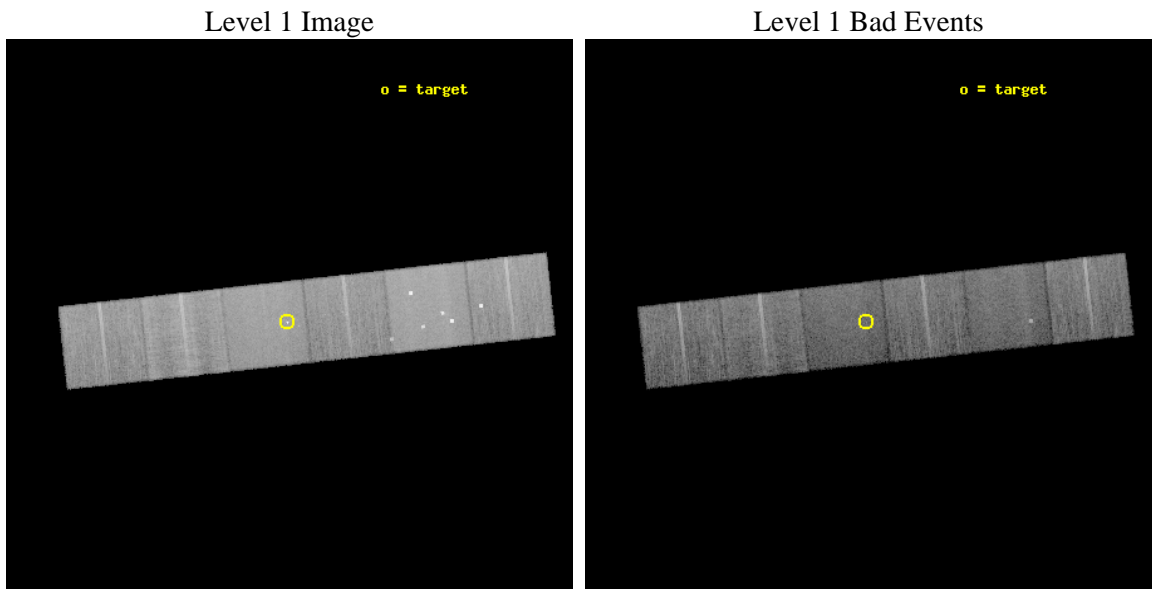
seq_num	200680	Sequence number
obs_id	12344	Observation id
title	Making planetary transits visible in X-rays	Proposal title
observer	Dr. Katja Poppenhaeager	Principal investigator
object	HD 189733	Source name
dtycycle	0	
cycle	P	events from which exps? Prim/Second/Both
ra_targ	300.182083	Observer's specified target RA [deg]
dec_targ	22.710111	Observer's specified target Dec [deg]
ra_nom	300.17736853501	Nominal RA [deg]
dec_nom	22.708021650155	Nominal Dec [deg]
roll_nom	173.71856105485	Nominal Roll [deg]
revision	2	Processing version of data
ontime	18239.225344181	Sum of GTIs [s]
livetime	18008.26929053	Livetime [s]
ontime4	18239.266384184	Sum of GTIs [s]
ontime5	18239.184304178	Sum of GTIs [s]
ontime6	18239.143264174	Sum of GTIs [s]
ontime7	18239.225344181	Sum of GTIs [s]
ontime8	18239.102224171	Sum of GTIs [s]
ontime9	18239.061184168	Sum of GTIs [s]
l2events	189160	Number of level 2 events



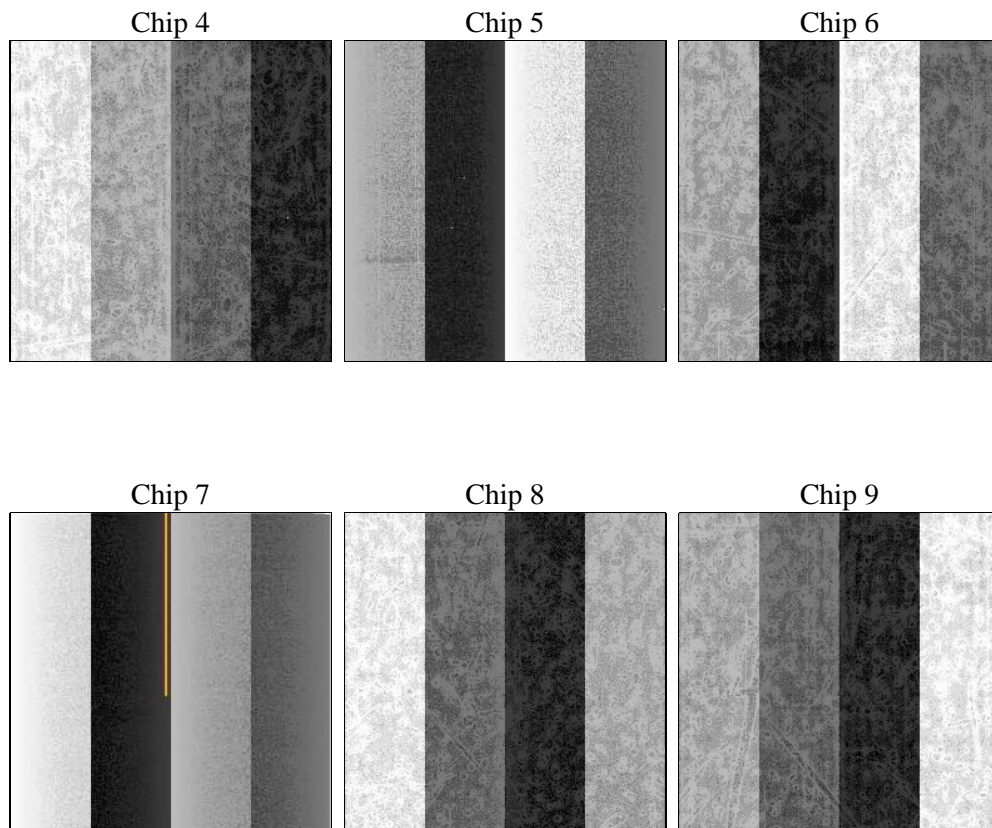
2 OBI

2.1 OBI

2.1.1 Images



2.1.2 Bias



2.1.3 Parameters

obi_num	0	Obi number	sched_exp_time	18189.490000	[s] Scheduled observation exposure time
ascdsver	8.4.3	Processing system revision	ontime	18239.225344181	Sum of GTIs [s]
caldsver	4.4.8	 	ontime4	18239.266384184	Sum of GTIs [s]
date	2012-02-18T04:57:32	Date and time of file creation	ontime5	18239.184304178	Sum of GTIs [s]
revision	2	Processing version of data	ontime6	18239.143264174	Sum of GTIs [s]
			ontime7	18239.225344181	Sum of GTIs [s]
			ontime8	18239.102224171	Sum of GTIs [s]
			ontime9	18239.061184168	Sum of GTIs [s]
			l1events	842627	Number of level 1 events

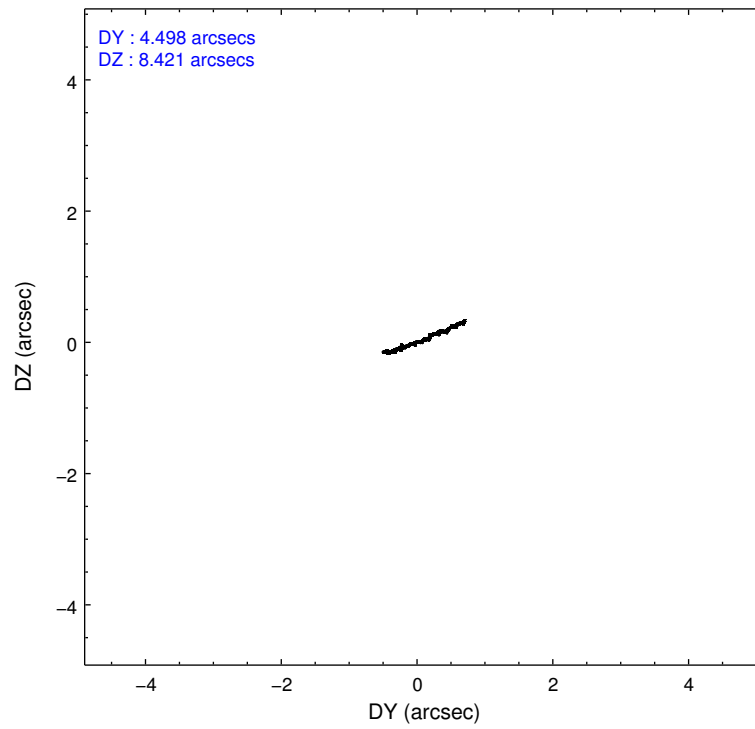
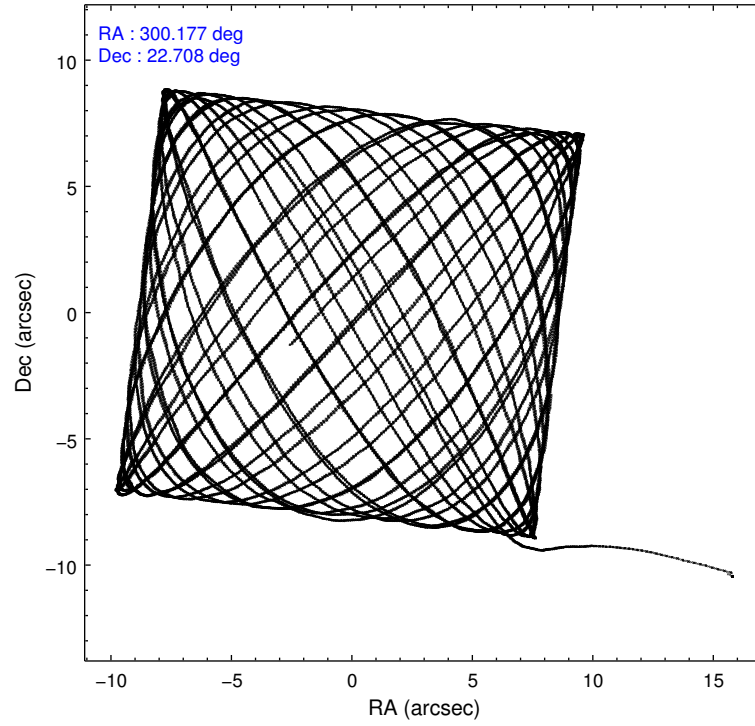
2.1.4 Events

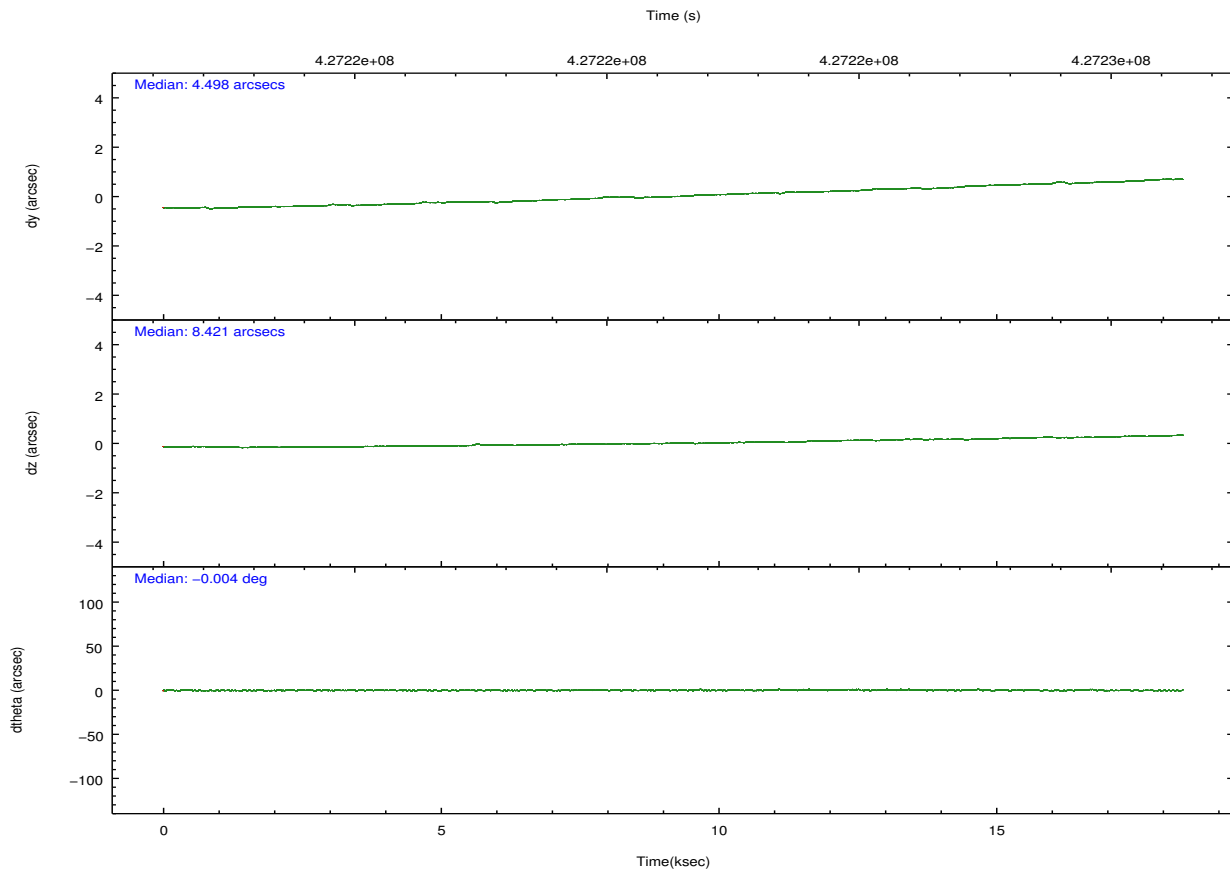
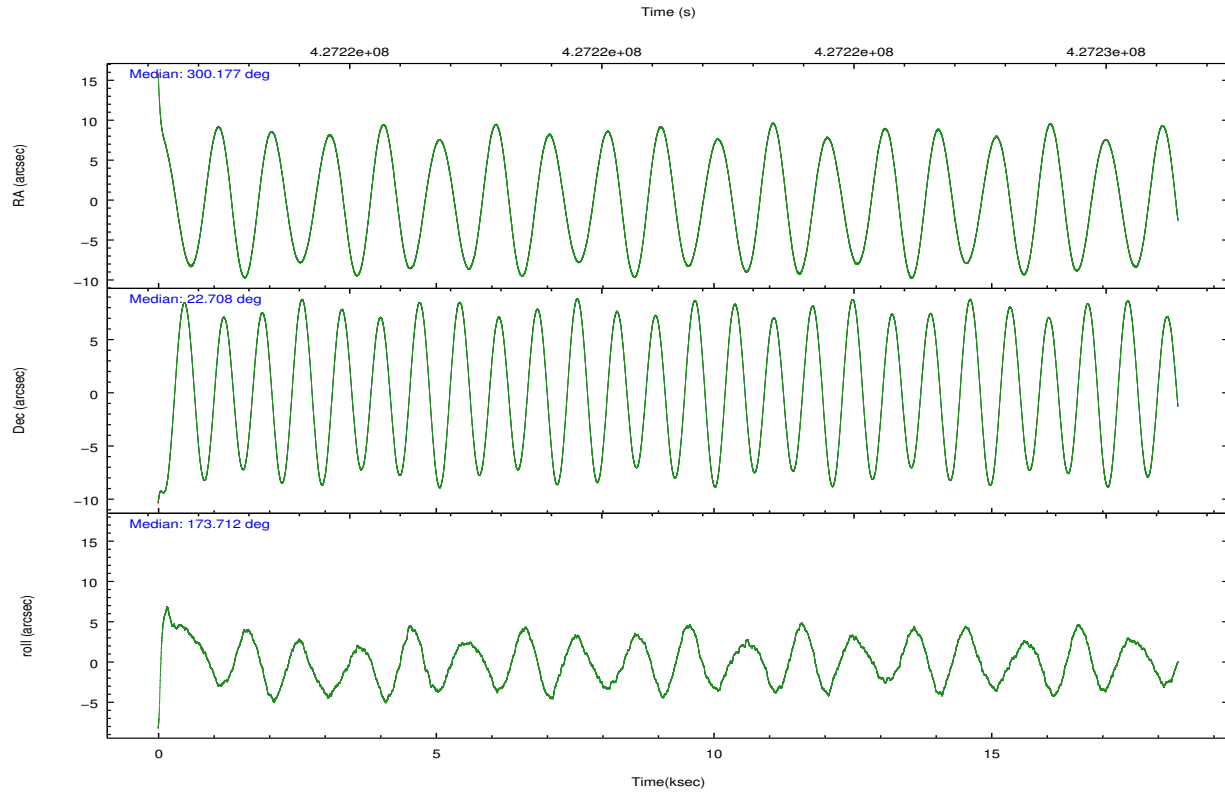
	ccd 4	ccd 5	ccd 6	ccd 7	ccd 8	ccd 9		ccd 4	ccd 5	ccd 6	ccd 7	ccd 8	ccd 9
level 1 events	136101	188041	114353	144895	144371	114866	grade 0 events	9486	17430	4667	5986	10247	5086
rejected events	118260	91058	101170	80604	108345	100919		6%	9%	4%	4%	7%	4%
rejected %	86%	48%	88%	55%	75%	87%	grade 1 events	136	1106	47	168	119	68
								0%	0%	0%	0%	0%	0%
							grade 2 events	3228	27538	2904	13073	8420	2932
								2%	14%	2%	9%	5%	2%
							grade 3 events	1439	2824	1323	5329	3936	1504
								1%	1%	1%	3%	2%	1%
							grade 4 events	1432	2664	1376	5341	3546	1356
								1%	1%	1%	3%	2%	1%
							grade 5 events	5405	12296	5372	14303	7731	5972
								3%	6%	4%	9%	5%	5%
							grade 6 events	2257	46544	2915	34572	9901	3072
								1%	24%	2%	23%	6%	2%
							grade 7 events	112718	77639	95749	66123	100471	94876
								82%	41%	83%	45%	69%	82%

2.2 Compared Parameters

Parameter	Planned	Actual	Parameter	Planned	Actual
Instrument	ACIS	ACIS	Obspar format version number	7	7
Detector	ACIS-456789	ACIS-456789	Obspar file type	PREDICTED	ACTUAL
Grating	NONE	NONE	Obspar update status	NONE	UPDATED
Data mode	FAINT	FAINT	CCD I0 on	N	N
Observation mode	POINTING	POINTING	CCD I1 on	N	N
[deg] Pointing RA	300.204313	300.1773685350099	CCD I2 on	N	N
[deg] Pointing Dec	22.719368	22.7080216501553	CCD I3 on	N	N
[deg] Pointing Roll	173.551532	173.7185610548529	CCD S0 on	O1	Y
[mm] SIM focus pos	-0.684267	-0.6828225247311905	CCD S1 on	O3	Y
[mm] SIM defocus	0	0.001444936568705701	CCD S2 on	O5	Y
[mm] SIM translation stage pos	-190.132523	-190.1425803651734	CCD S3 on	Y	Y
[mm] SIM translation stage offset	0	0.01005778216563158	CCD S4 on	O4	Y
Phase constraints	Y	Y	CCD S5 on	O2	Y
[d] Phase period	2.218573	2.218573	Number of optional ACIS chips dropped	0	0
[d] Phase epoch (MJD)	55563.490403	55563.490403	On-chip summing requested	N	N
Phase start	0.947800	0.947800	Subarray requested	NONE	NONE
Phase end	0.052200	0.052200	Alternating exposures requested	N	N
Phase start error	0.010400	0.010400	[s] Primary exposure time	0.000000	3.2
Phase end error	0.010400	0.010400			
[s] Observation start time (MET)	427212292.184000	427211225.54391			
Observation start date	2011-07-16T14:03:46	2011-07-16T13:47:05			
[s] Observation end time (MET)	427230481.184000	427230707.20743			
Observation end date	2011-07-16T19:06:55	2011-07-16T19:11:47			
Read mode	TIMED	TIMED			

2.3 Aspect



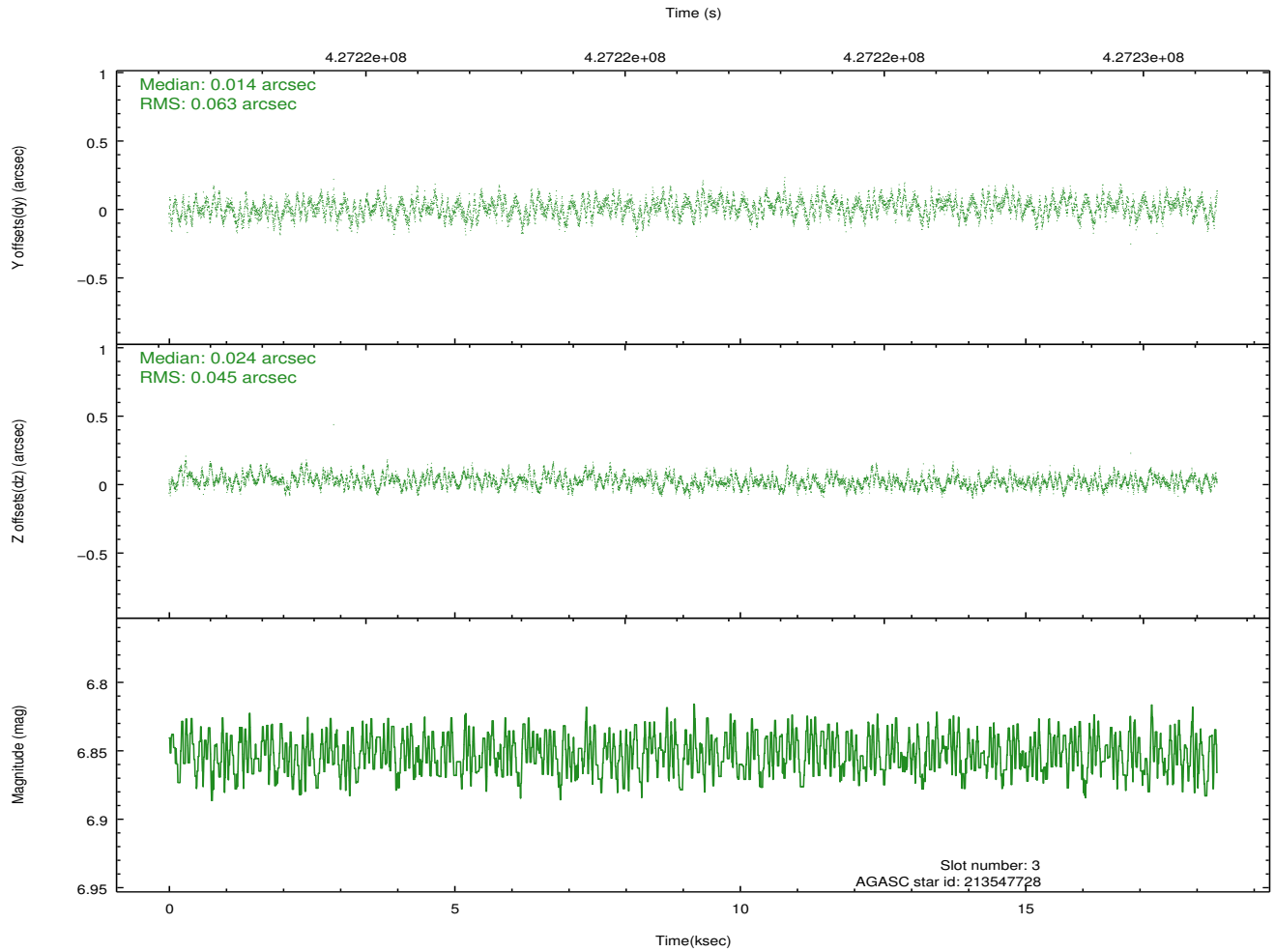
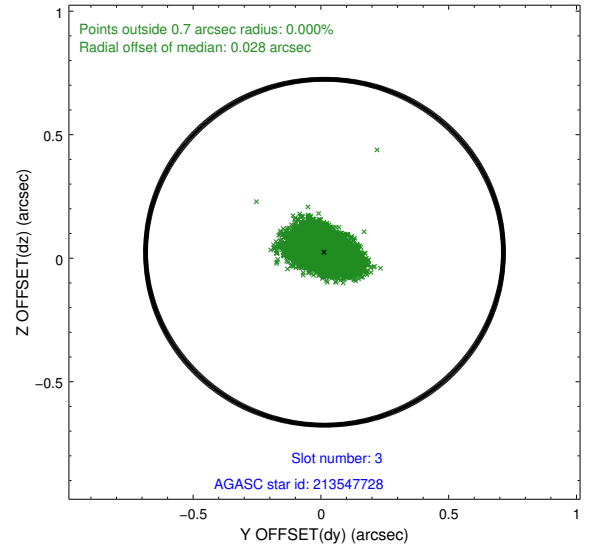
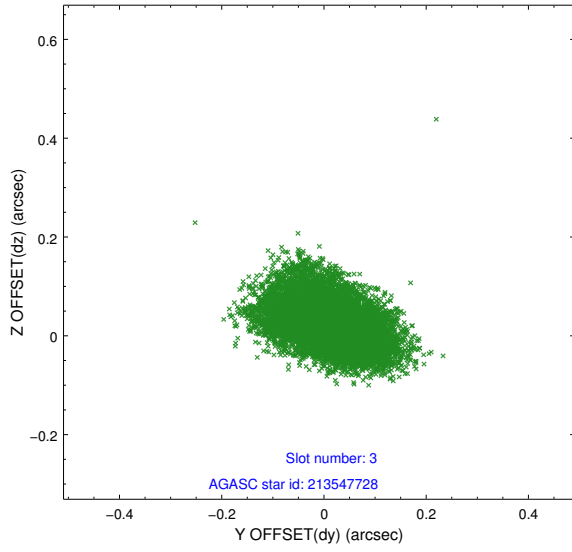


Slot Statistics

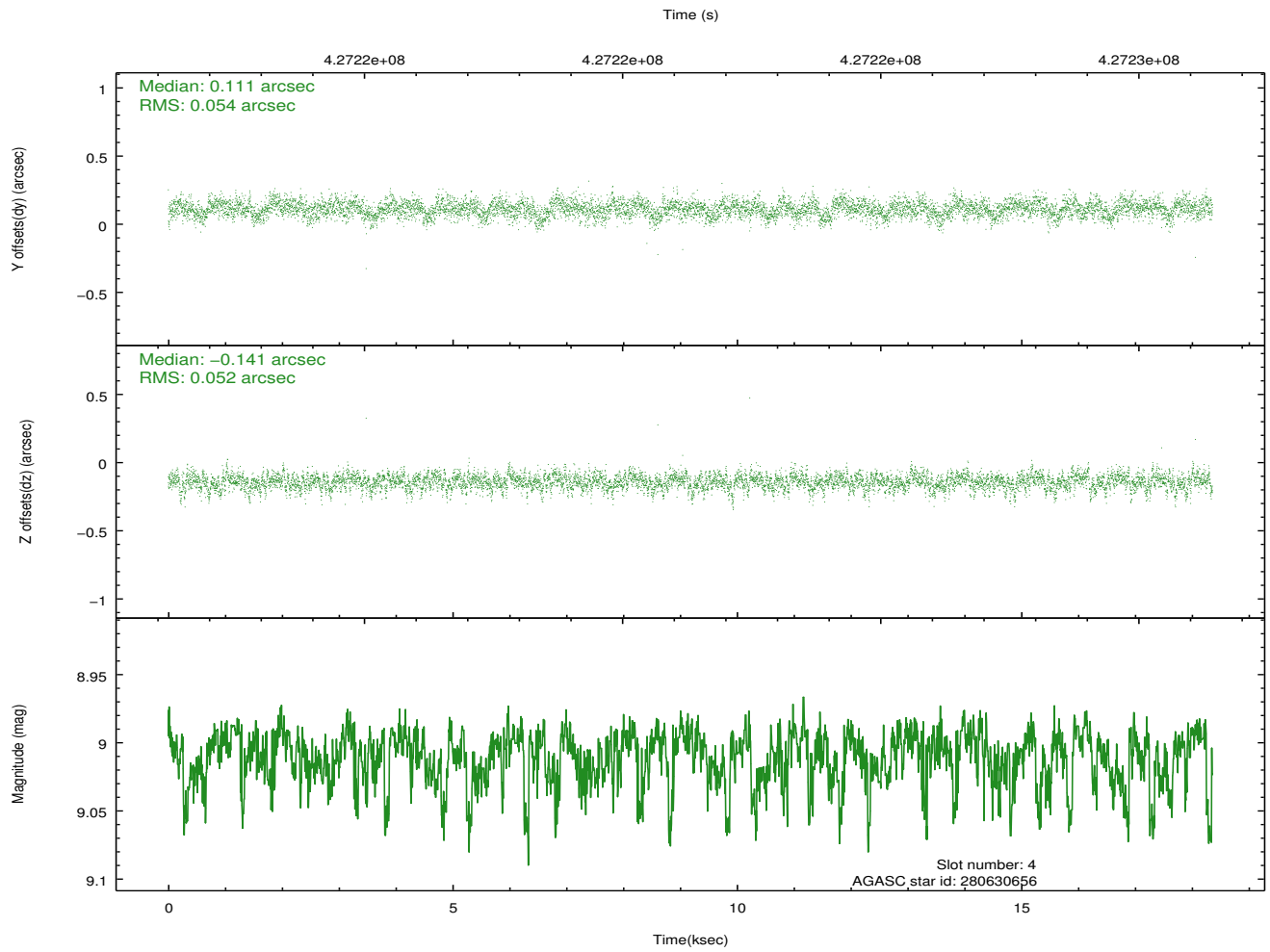
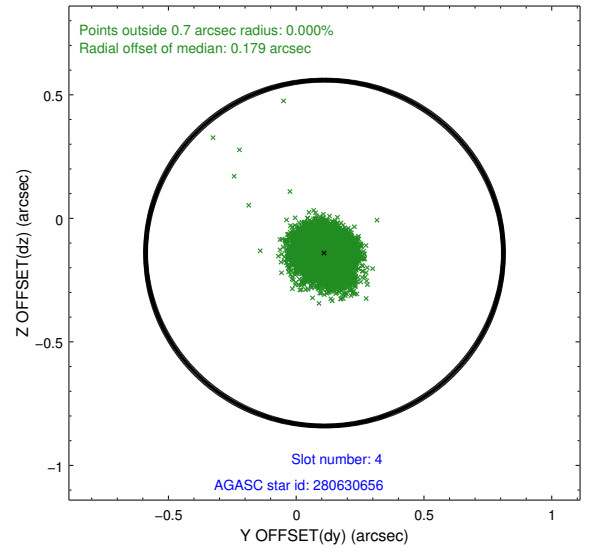
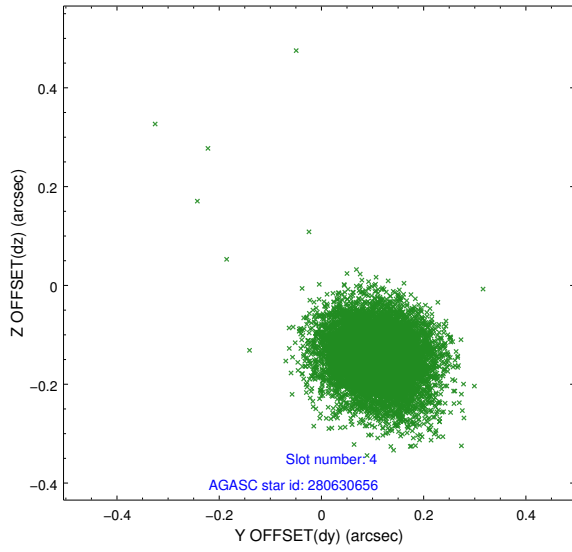
slot	status	id	mag	n_pts	med_dy	med_dz	dr1	dr2	ra	dec	mean_y	mean_z
0	FID	ACIS-S-1	7.11	4479	0.080	-0.071	0.020	0.027	0.000000	0.000000	938.83	-1725.33
1	FID	ACIS-S-4	7.12	4479	0.158	0.017	0.009	0.015	0.000000	0.000000	2156.49	178.66
2	FID	ACIS-S-5	7.15	4478	-0.264	0.067	0.017	0.023	0.000000	0.000000	-1810.05	172.66
3	GUIDE	213547728	6.85	8957	0.014	0.024	0.082	0.135	300.592091	22.151462	-1514.04	1884.75
4	GUIDE	280630656	9.01	8951	0.111	-0.141	0.078	0.129	300.025585	22.704884	583.51	118.74
5	GUIDE	280632896	9.07	8953	-0.225	0.121	0.084	0.137	299.532468	22.850727	2268.62	-224.13
6	GUIDE	280631080	8.89	8952	0.094	-0.102	0.103	0.179	299.578484	23.303541	2293.79	-1861.55
7	GUIDE	280632480	7.98	8955	0.013	0.099	0.061	0.100	300.237301	22.846979	-56.47	-468.82

2.4 Star Slots

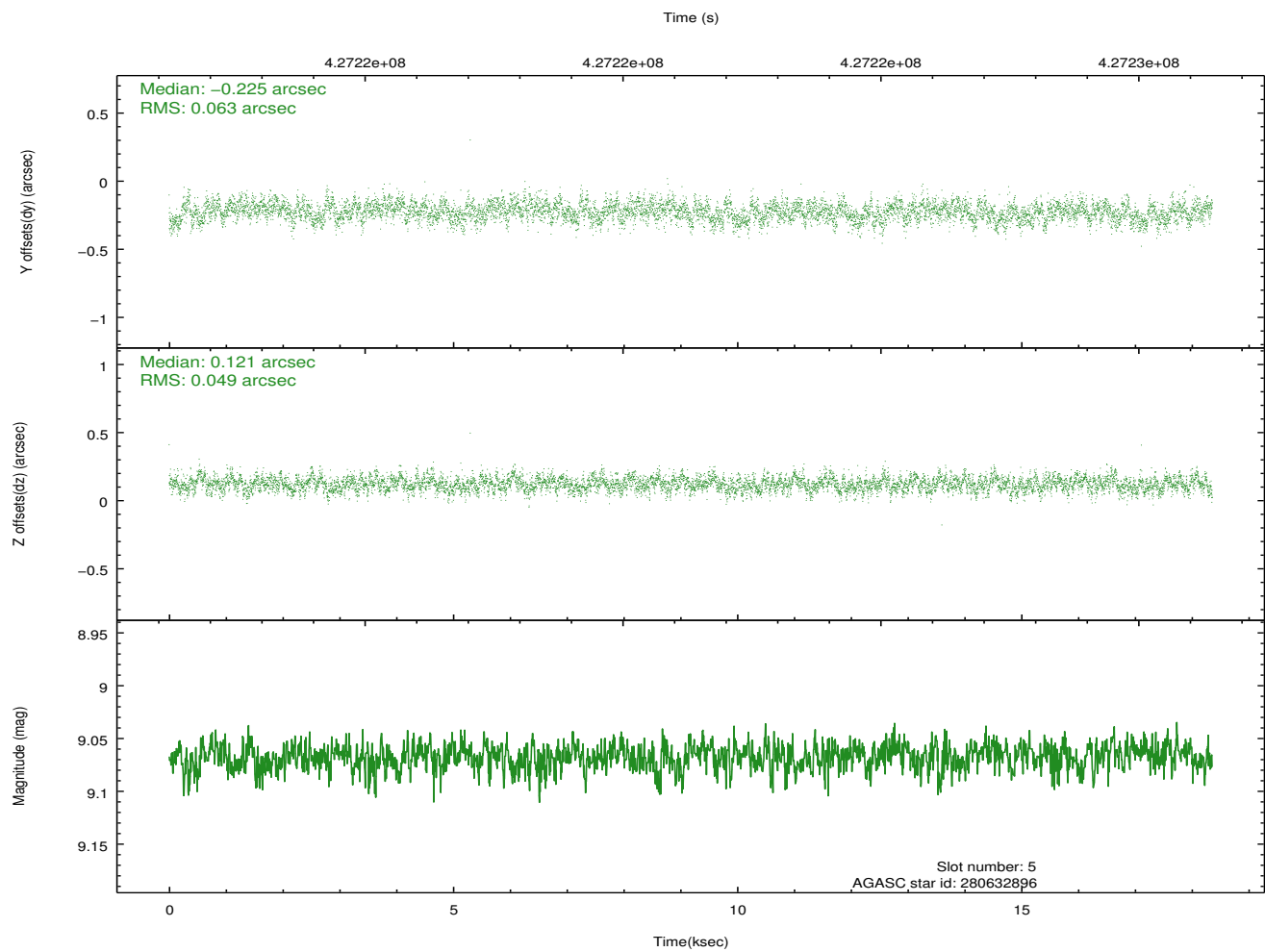
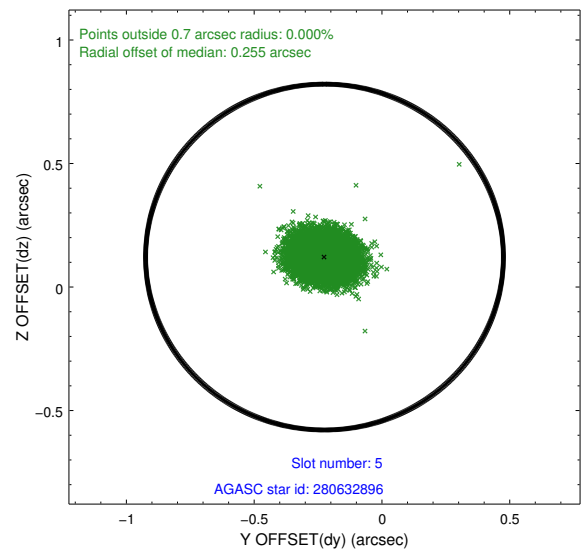
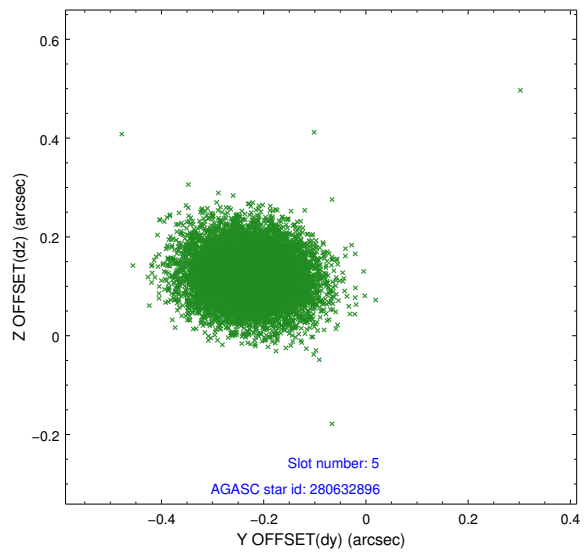
2.4.1 Slot 3



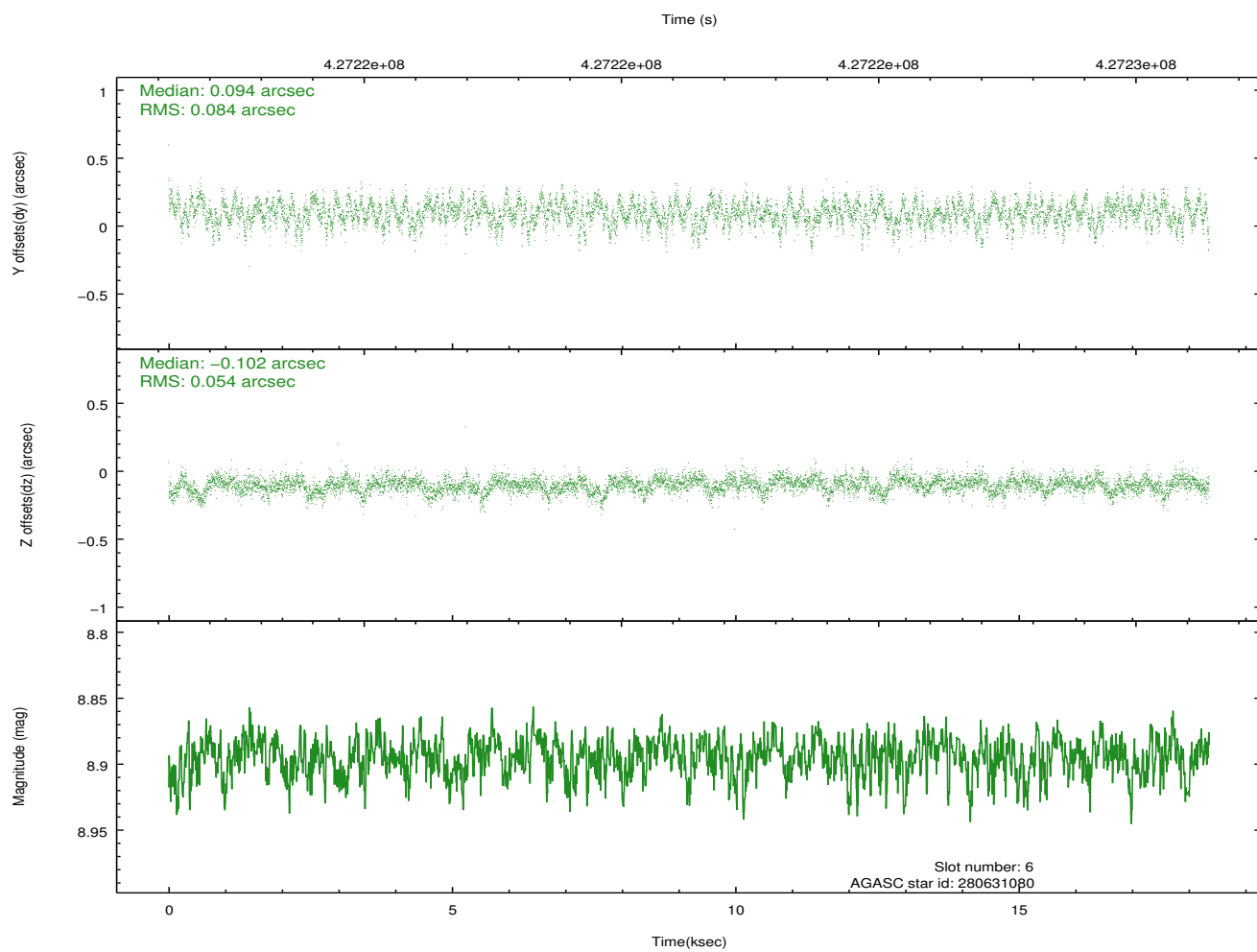
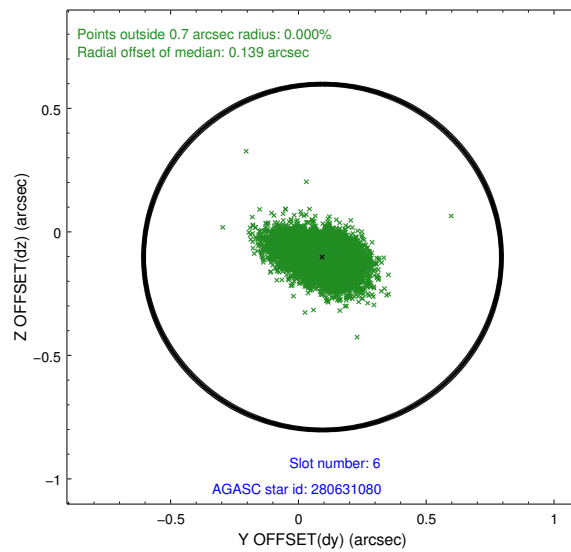
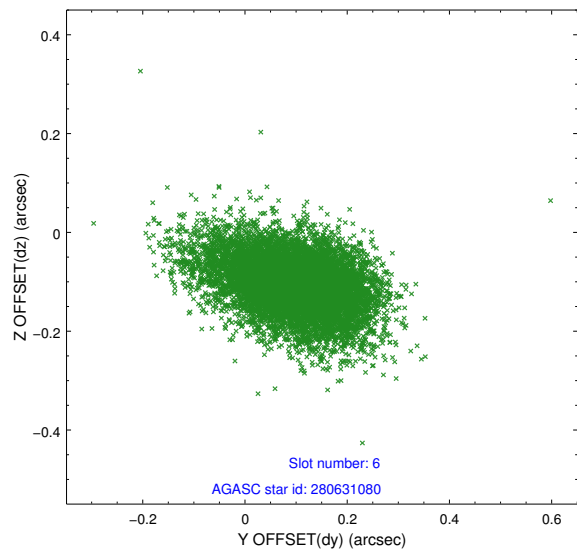
2.4.2 Slot 4



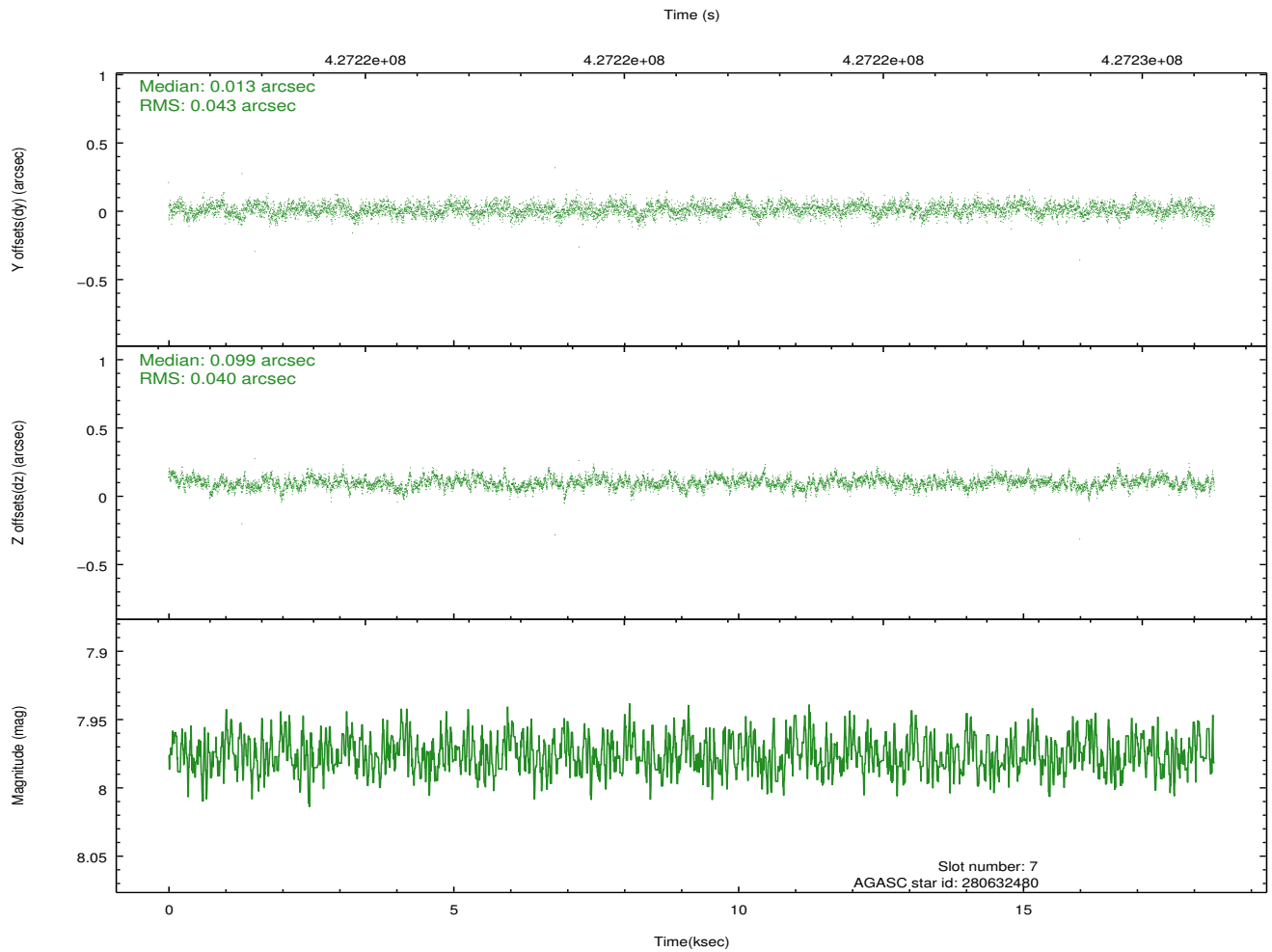
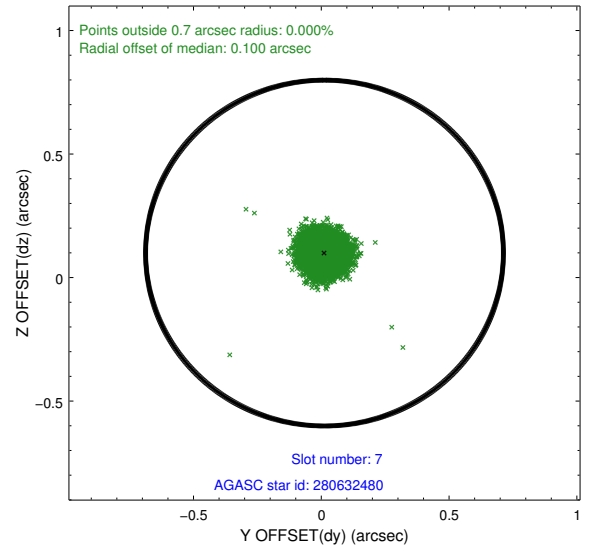
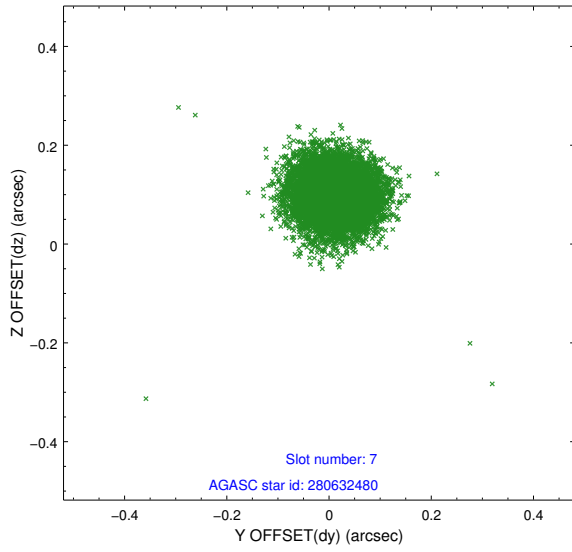
2.4.3 Slot 5



2.4.4 Slot 6

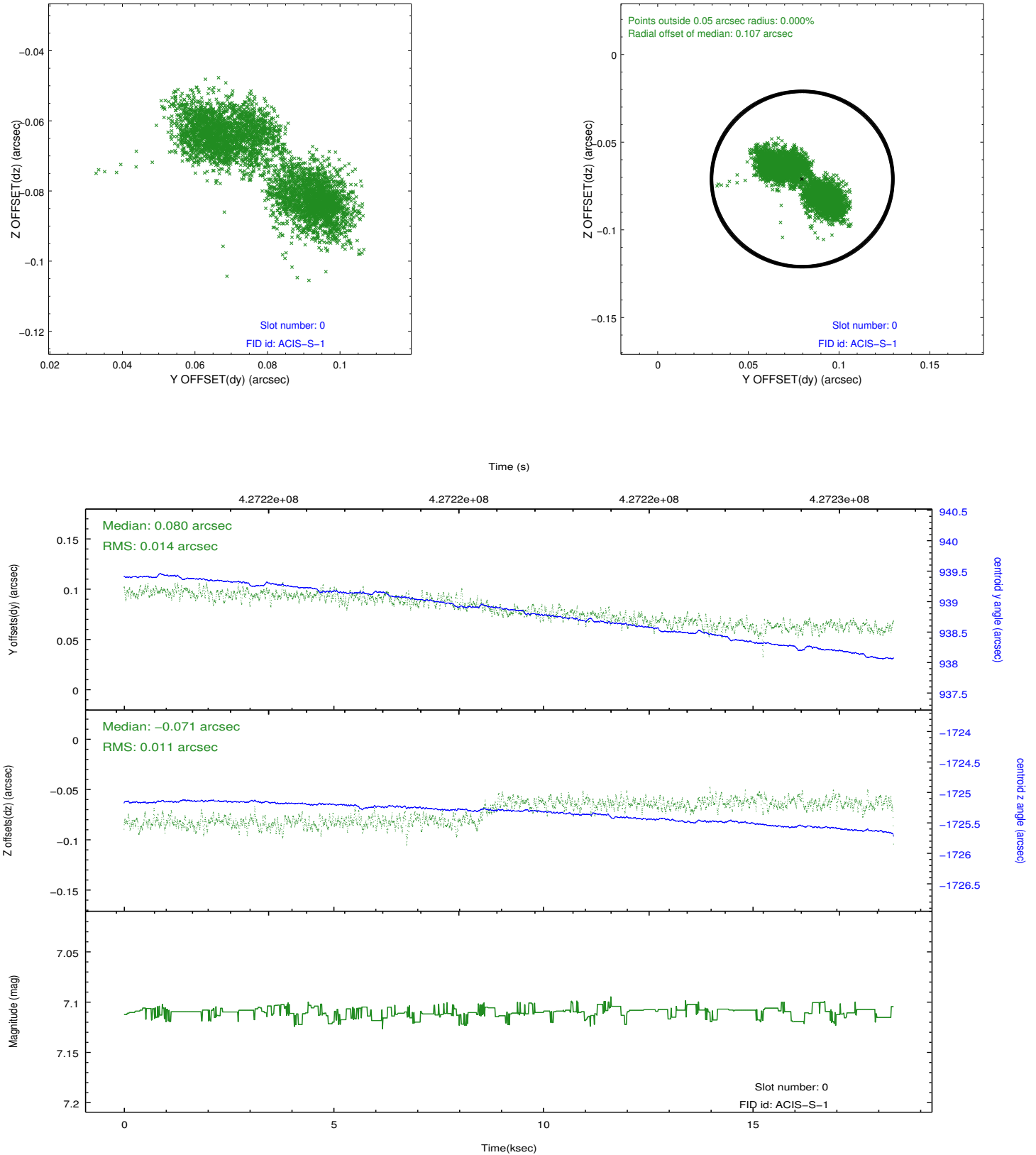


2.4.5 Slot 7

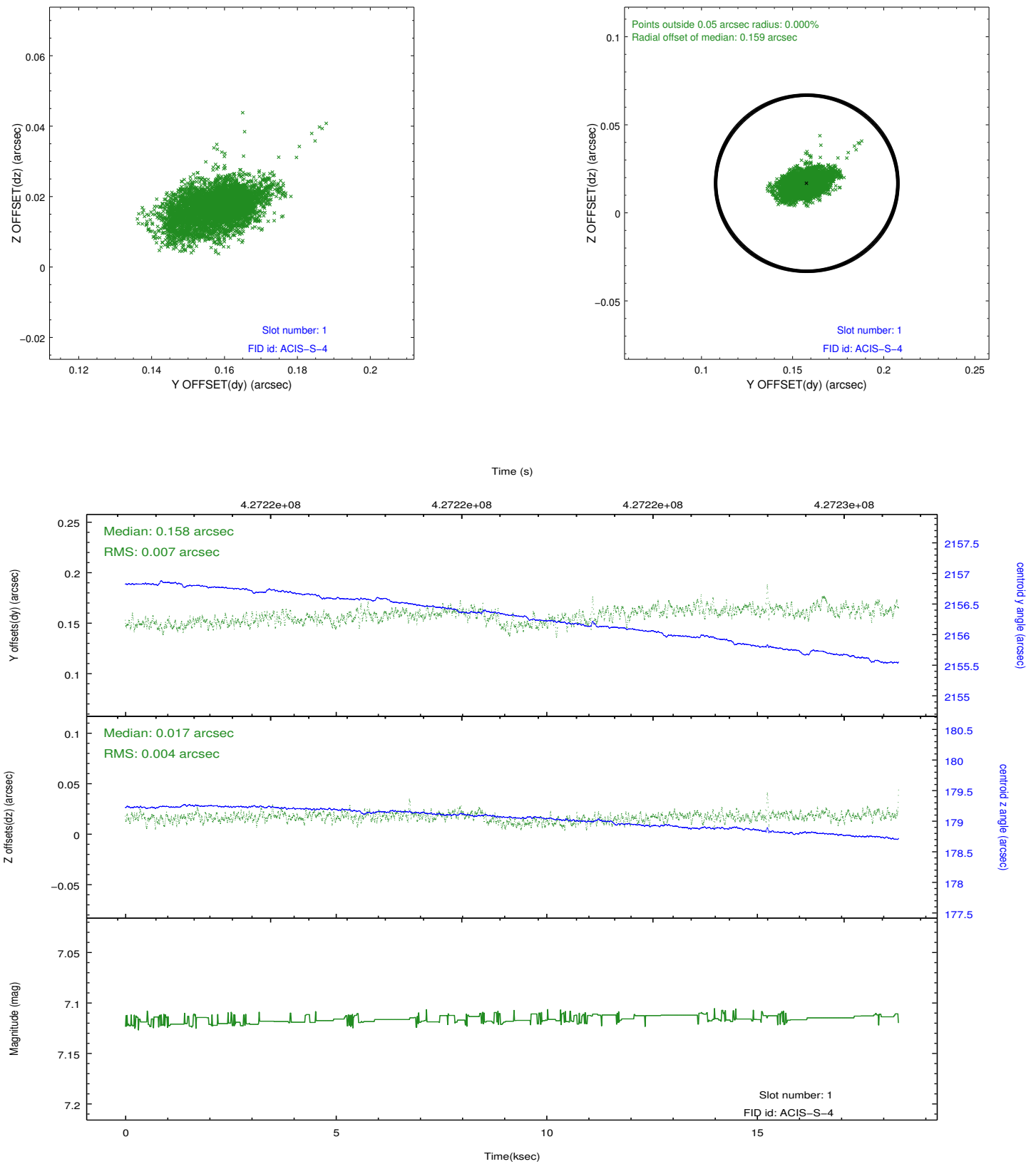


2.5 FID Slots

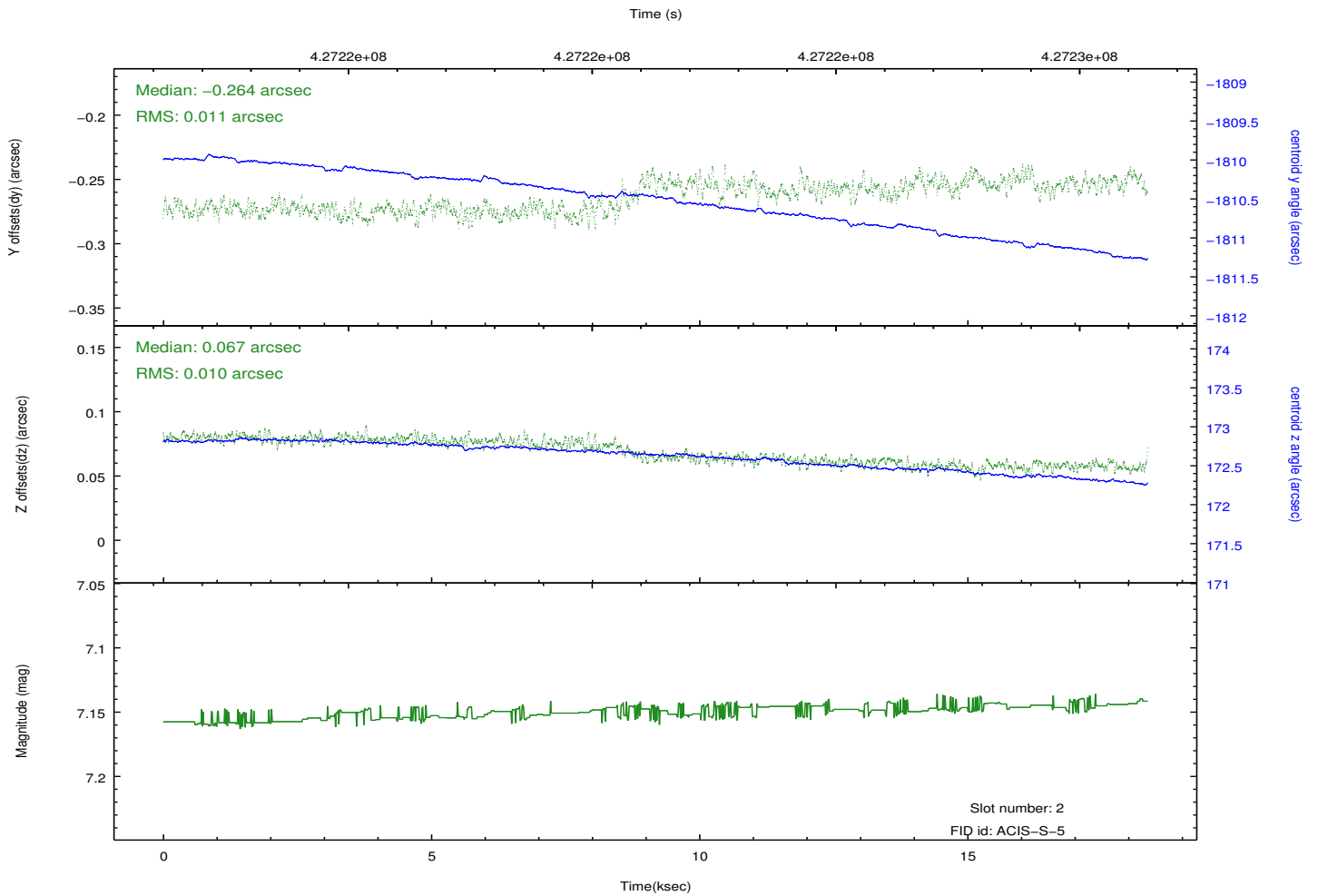
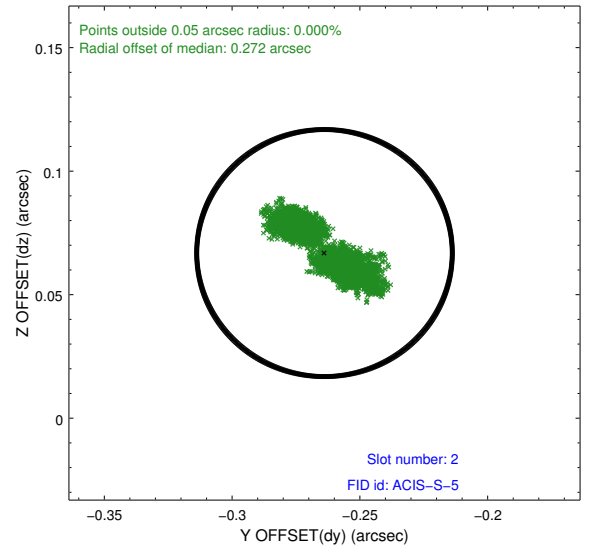
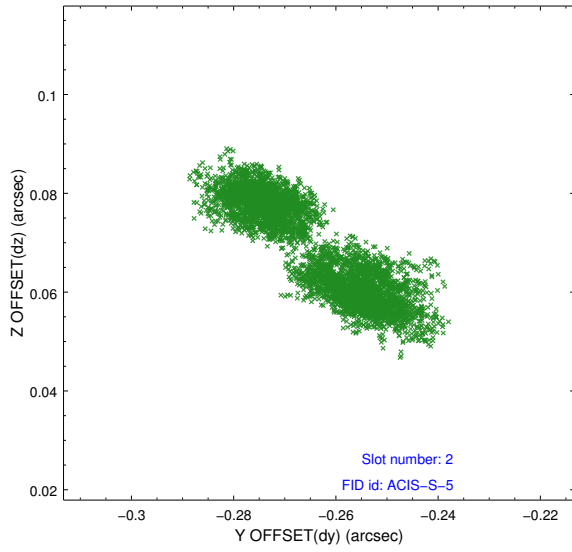
2.5.1 Slot 0



2.5.2 Slot 1



2.5.3 Slot 2



A Summary

A.1 Status

V&V Scientist	Jen Lauer
V&V Date (YYYY-MM-DD)	2012.02.21
V&V Edition	1
V&V Disposition and Status	OK
V&V Charge Time	18.239225350201

A.2 Comments

Phase constraint met except for a few seconds at the beginning of the observation. Monitor constraint met.