

V&V Reference Report

L2 ASCDS Version : 8.4.3

Observation 12514 - L2 Version 3
Chandra X-Ray Center

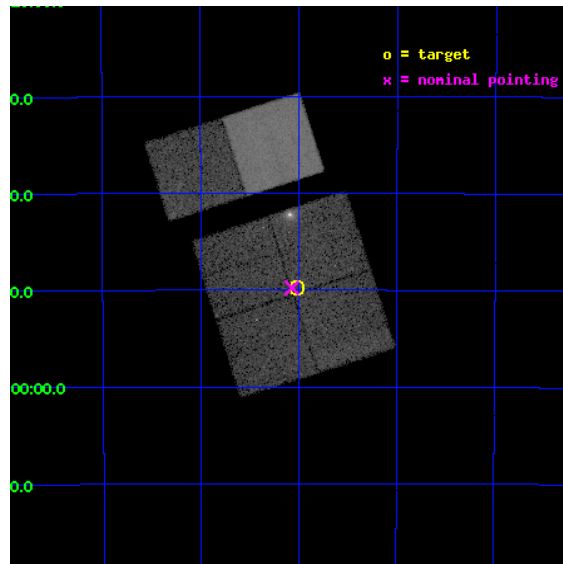
L2 Processing Date : Feb 12 2012

Contents

1	Front	2
2	OBI	3
2.1	OBI	3
2.1.1	Images	3
2.1.2	Bias	3
2.1.3	Parameters	4
2.1.4	Events	4
2.2	Compared Parameters	5
2.3	Aspect	6
2.4	Star Slots	9
2.4.1	Slot 3	9
2.4.2	Slot 4	10
2.4.3	Slot 5	11
2.4.4	Slot 6	12
2.4.5	Slot 7	13
2.5	FID Slots	14
2.5.1	Slot 0	14
2.5.2	Slot 1	15
2.5.3	Slot 2	16
A	Summary	17
A.1	Status	17
A.2	Comments	17

1 Front

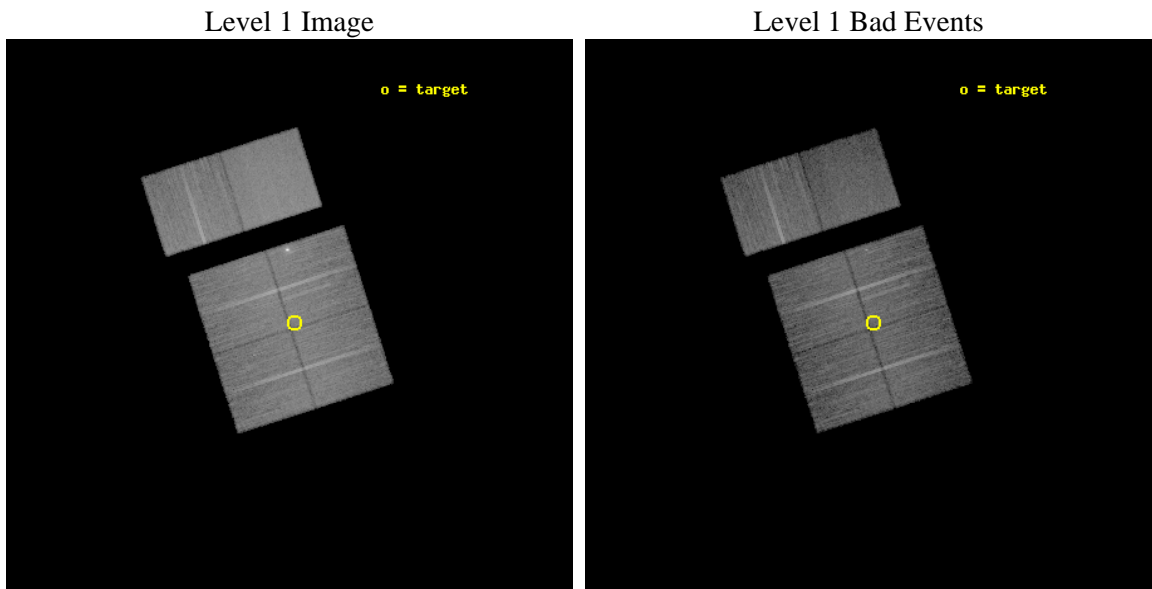
seq_num	401255	Sequence number
obs_id	12514	Observation id
title	Census of the Normal Spiral Arm Region	Proposal title
observer	Dr. John Tomsick	Principal investigator
object	Norma Region	Source name
dtcycle	0	
cycle	P	events from which exps? Prim/Second/Both
ra_targ	249.75573	Observer's specified target RA [deg]
dec_targ	-46.829402	Observer's specified target Dec [deg]
ra_nom	249.76758185918	Nominal RA [deg]
dec_nom	-46.829469390385	Nominal Dec [deg]
roll_nom	342.21731696379	Nominal Roll [deg]
revision	3	Processing version of data
ontime	20054.358864903	Sum of GTIs [s]
livetime	19800.418497671	Livetime [s]
ontime0	20054.358875036	Sum of GTIs [s]
ontime1	20057.599925339	Sum of GTIs [s]
ontime2	20057.599925339	Sum of GTIs [s]
ontime3	20054.358864903	Sum of GTIs [s]
ontime6	20057.599925339	Sum of GTIs [s]
ontime7	20057.599925339	Sum of GTIs [s]
l2events	146465	Number of level 2 events



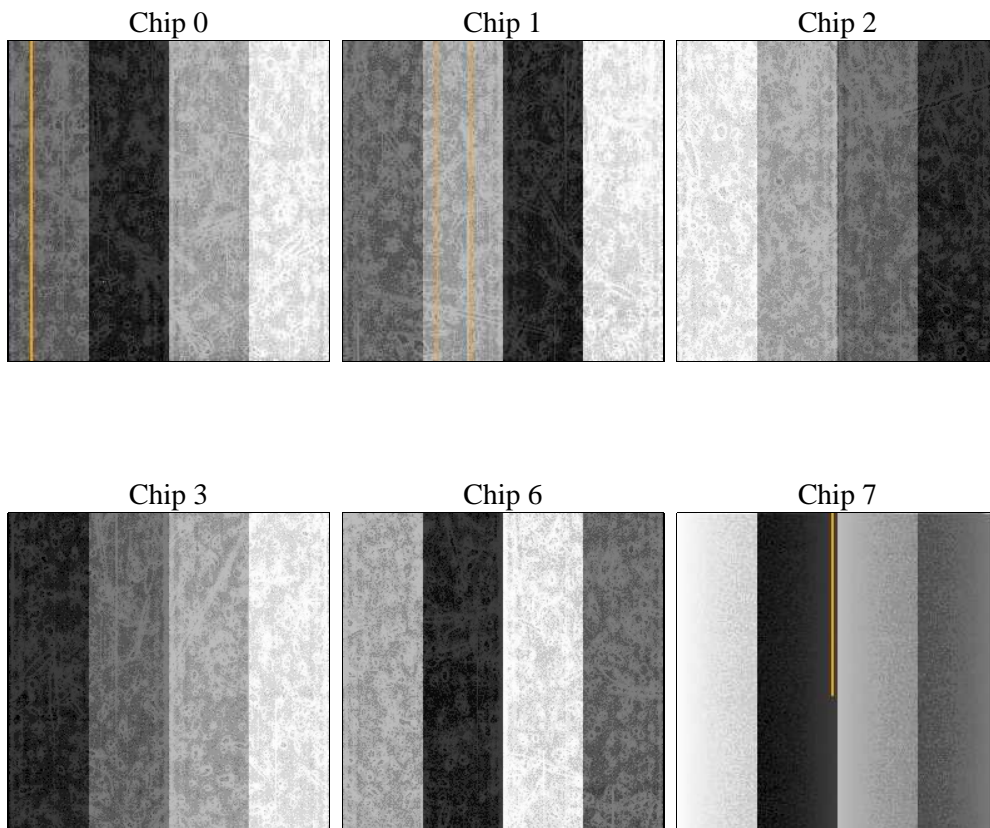
2 OBI

2.1 OBI

2.1.1 Images



2.1.2 Bias



2.1.3 Parameters

obi_num	1	Obi number	sched_exp_time	20000.000000	[s] Scheduled observation exposure time
ascdsver	8.4.3	Processing system revision	ontime	20054.358864903	Sum of GTIs [s]
caldsver	4.4.7	 	ontime0	20054.358875036	Sum of GTIs [s]
date	2012-02-12T11:22:16	Date and time of file creation	ontime1	20057.599925339	Sum of GTIs [s]
revision	3	Processing version of data	ontime2	20057.599925339	Sum of GTIs [s]
			ontime3	20054.358864903	Sum of GTIs [s]
			ontime6	20057.599925339	Sum of GTIs [s]
			ontime7	20057.599925339	Sum of GTIs [s]
			l1events	765254	Number of level 1 events

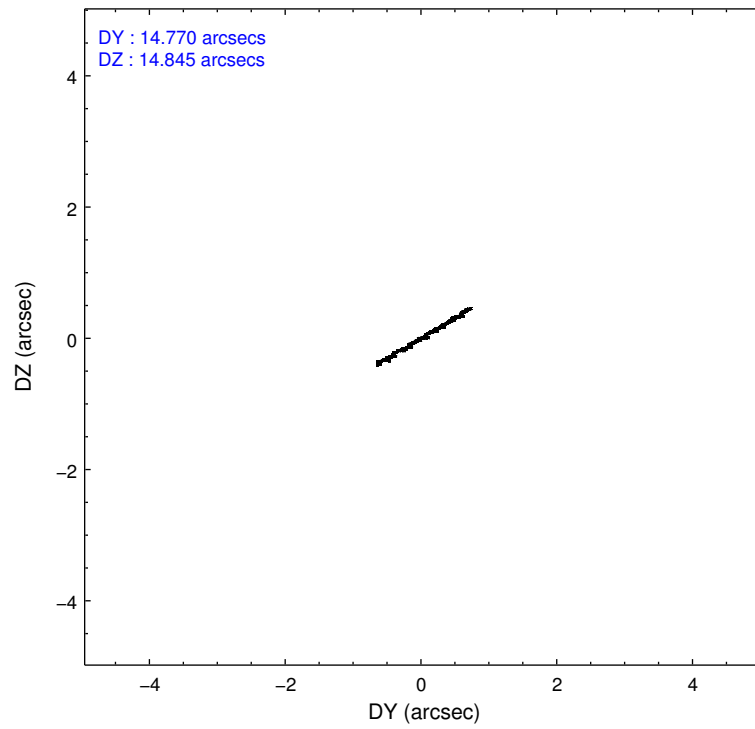
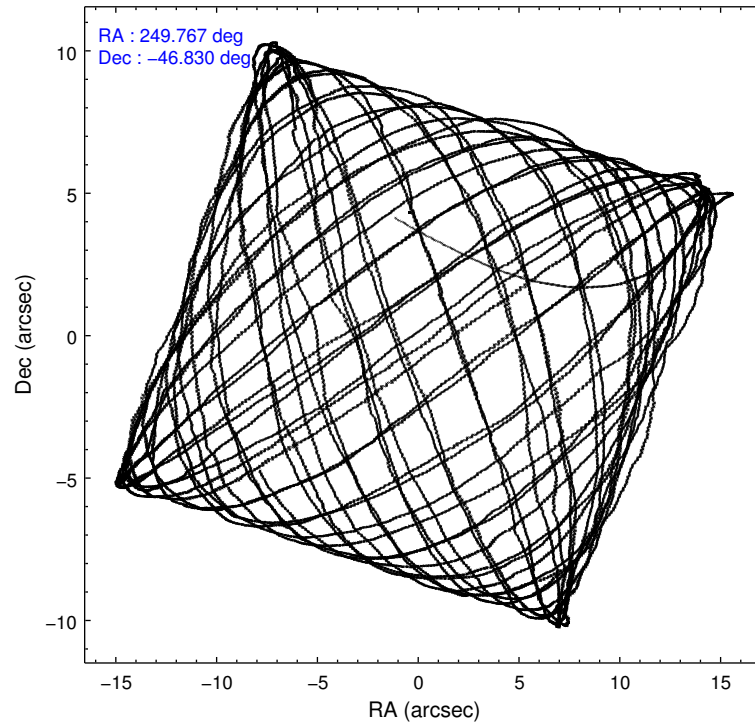
2.1.4 Events

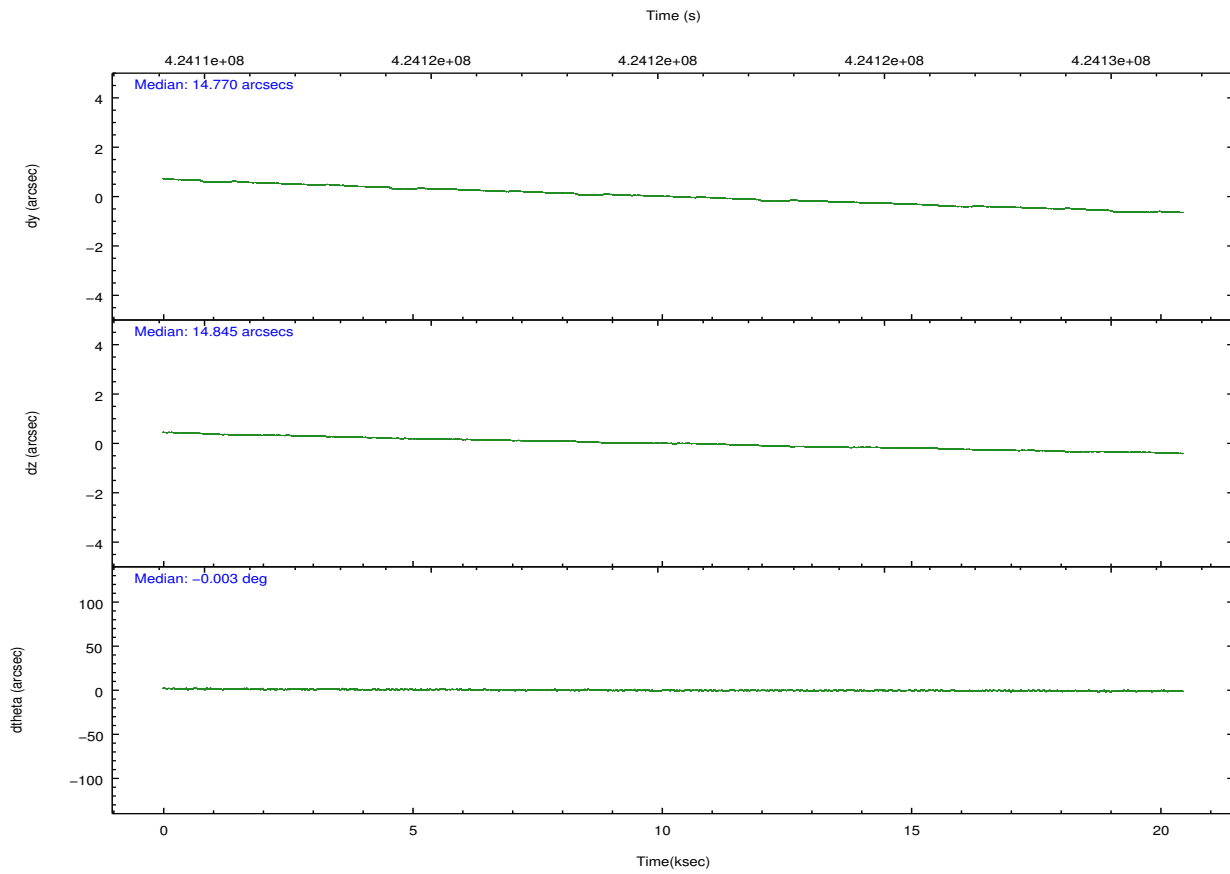
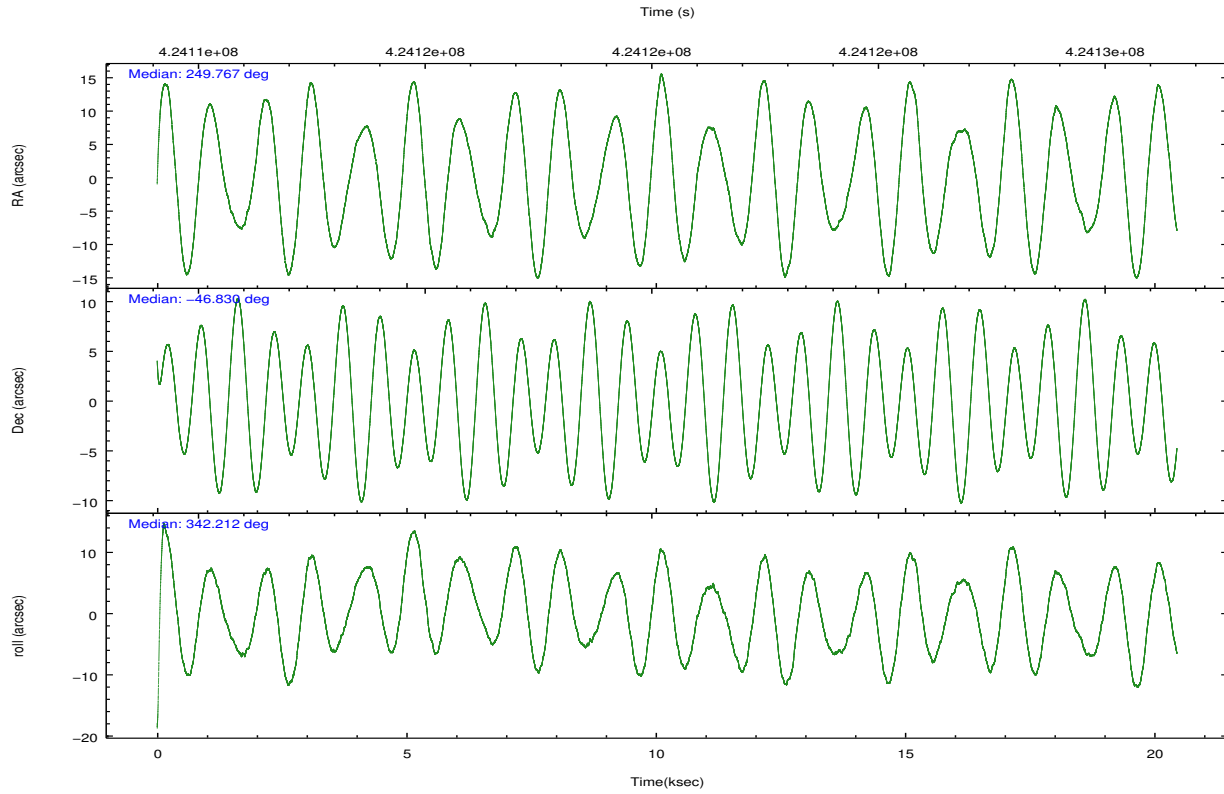
	ccd 0	ccd 1	ccd 2	ccd 3	ccd 6	ccd 7		ccd 0	ccd 1	ccd 2	ccd 3	ccd 6	ccd 7
level 1 events	111303	113937	124197	129476	128593	157748	grade 0 events	6228	6691	6518	10153	6636	6920
rejected events	95569	96850	108535	107198	111864	85370		5%	5%	5%	7%	5%	4%
rejected %	85%	85%	87%	82%	86%	54%	grade 1 events	66	66	94	143	79	199
								0%	0%	0%	0%	0%	0%
							grade 2 events	3503	3712	3446	4306	3526	14750
								3%	3%	2%	3%	2%	9%
							grade 3 events	1534	1641	1458	1987	1596	6346
								1%	1%	1%	1%	1%	4%
							grade 4 events	1445	1671	1518	1940	1549	6244
								1%	1%	1%	1%	1%	3%
							grade 5 events	5326	5525	4968	5972	5767	15931
								4%	4%	4%	4%	4%	10%
							grade 6 events	3028	3372	2724	3893	3423	38133
								2%	2%	2%	3%	2%	24%
							grade 7 events	90173	91259	103471	101082	106017	69225
								81%	80%	83%	78%	82%	43%

2.2 Compared Parameters

Parameter	Planned	Actual	Parameter	Planned	Actual
Instrument	ACIS	ACIS	Obspar format version number	7	7
Detector	ACIS-012367	ACIS-012367	Obspar file type	PREDICTED	ACTUAL
Grating	NONE	NONE	Obspar update status	NONE	UPDATED
Data mode	VFAINT	VFAINT	CCD I0 on	Y	Y
Observation mode	POINTING	POINTING	CCD I1 on	Y	Y
[deg] Pointing RA	249.728289	249.7675818591844	CCD I2 on	Y	Y
[deg] Pointing Dec	-46.835397	-46.82946939038475	CCD I3 on	Y	Y
[deg] Pointing Roll	341.979987	342.2173169637859	CCD S0 on	N	N
[mm] SIM focus pos	-0.782348	-0.7809083437167272	CCD S1 on	N	N
[mm] SIM defocus	0	0.001439871863259334	CCD S2 on	O2	Y
[mm] SIM translation stage pos	-233.592463	-233.5874344608287	CCD S3 on	O1	Y
[mm] SIM translation stage offset	0	-0.005018542100998502	CCD S4 on	N	N
[s] Observation start time (MET)	424110554.184000	424109259.54206	CCD S5 on	N	N
Observation start date	2011-06-10T16:28:08	2011-06-10T16:07:39	Number of optional ACIS chips dropped	0	0
[s] Observation end time (MET)	424130554.184000	424130688.19317	On-chip summing requested	N	N
Observation end date	2011-06-10T22:01:28	2011-06-10T22:04:48	Subarray requested	NONE	NONE
Read mode	TIMED	TIMED	Alternating exposures requested	N	N
			[s] Primary exposure time	0.000000	3.2

2.3 Aspect



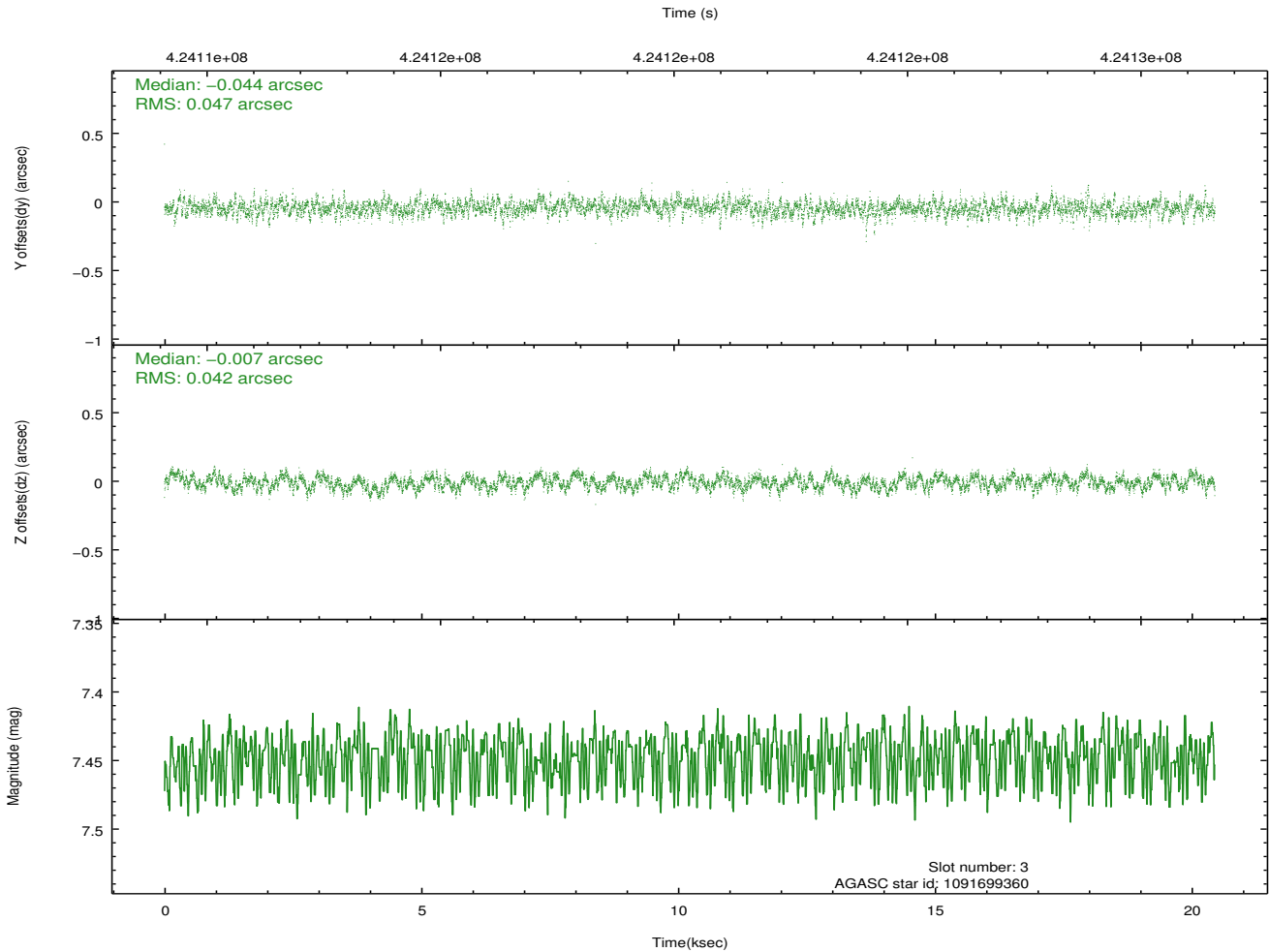
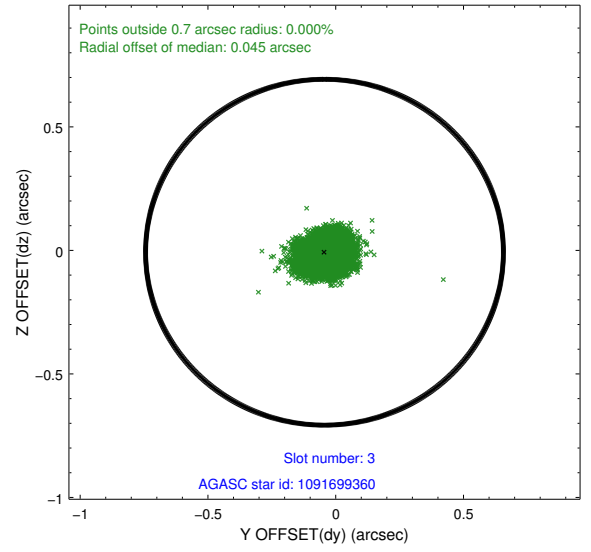
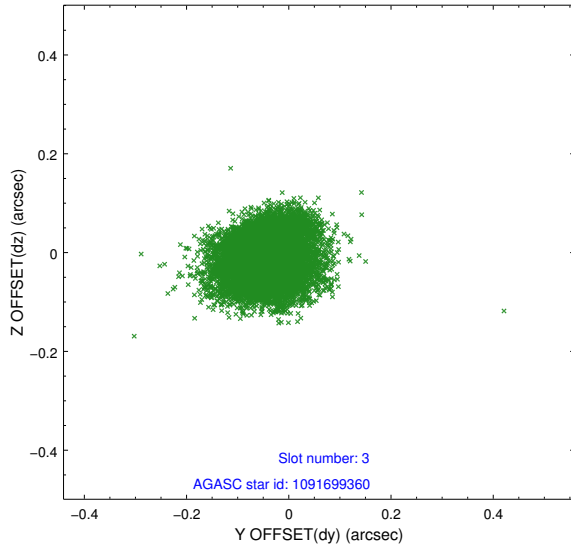


Slot Statistics

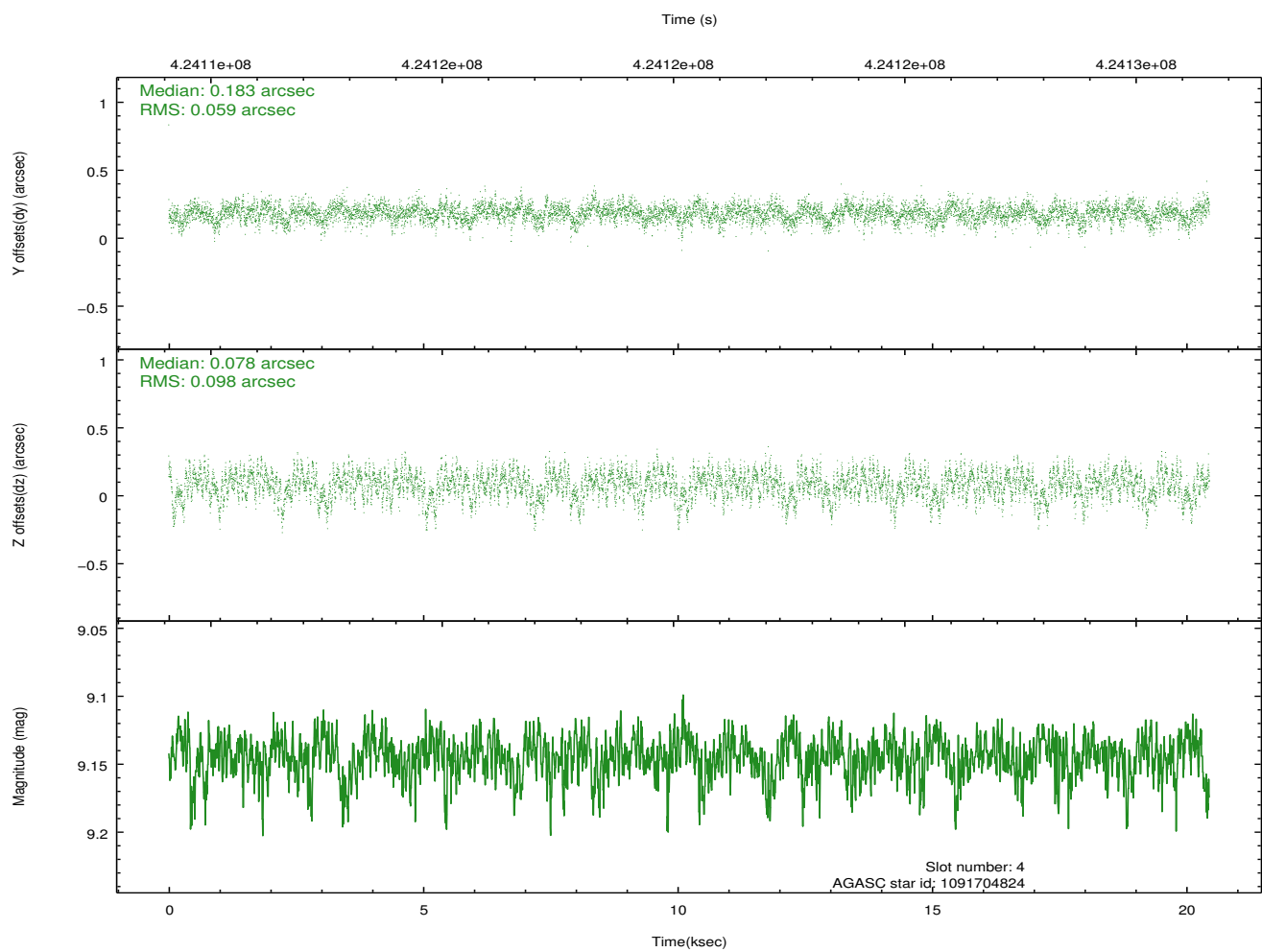
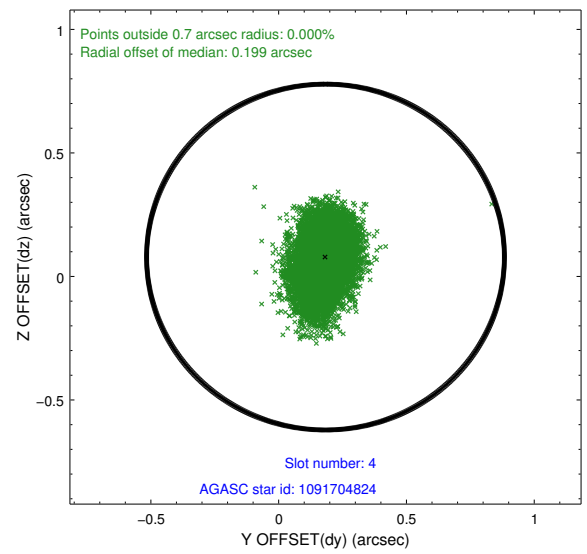
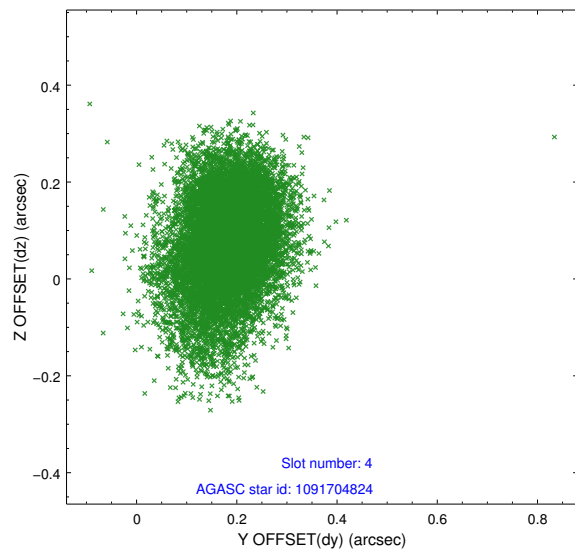
slot	status	id	mag	n_pts	med_dy	med_dz	dr1	dr2	ra	dec	mean_y	mean_z
0	FID	ACIS-I-1	7.12	4989	0.036	-0.005	0.011	0.019	0.000000	0.000000	924.74	-838.43
1	FID	ACIS-I-5	7.11	4986	-0.219	0.039	0.009	0.015	0.000000	0.000000	-1823.55	1058.98
2	FID	ACIS-I-6	7.12	4989	0.093	0.036	0.011	0.020	0.000000	0.000000	390.11	1703.71
3	GUIDE	1091699360	7.45	9975	-0.044	-0.007	0.066	0.109	248.660725	-47.004364	-2298.08	-1406.12
4	GUIDE	1091704824	9.14	9963	0.183	0.078	0.119	0.204	249.173141	-47.336759	-727.59	-2139.78
5	GUIDE	1091705016	7.82	9975	-0.220	0.042	0.076	0.124	249.888030	-47.558250	1174.58	-2354.76
6	GUIDE	1091709408	9.21	9896	0.169	-0.052	0.115	0.185	249.304466	-47.312562	-450.62	-1956.26
7	GUIDE	1091709800	9.17	9966	-0.083	-0.058	0.101	0.163	249.801955	-47.310212	700.87	-1571.14

2.4 Star Slots

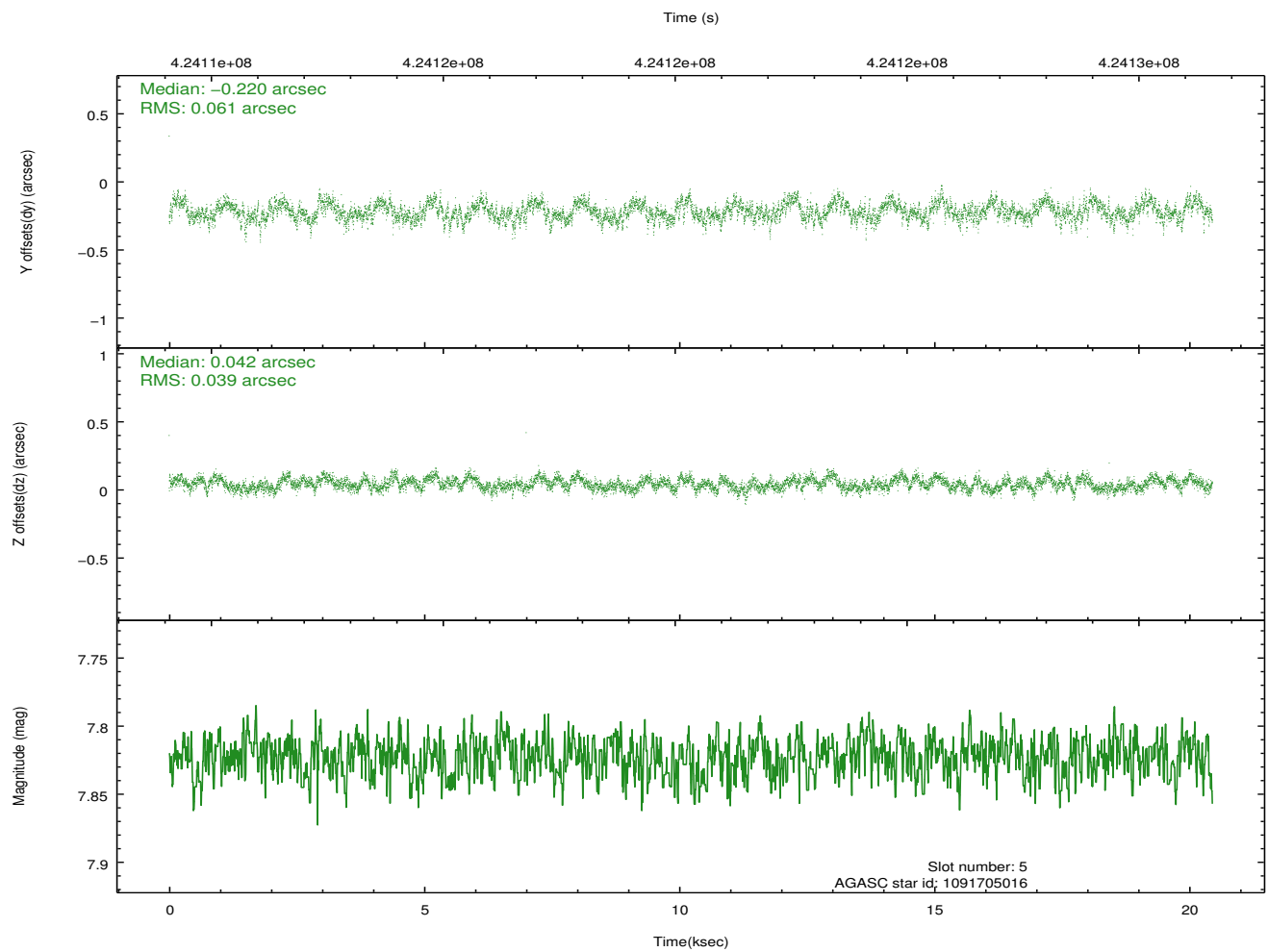
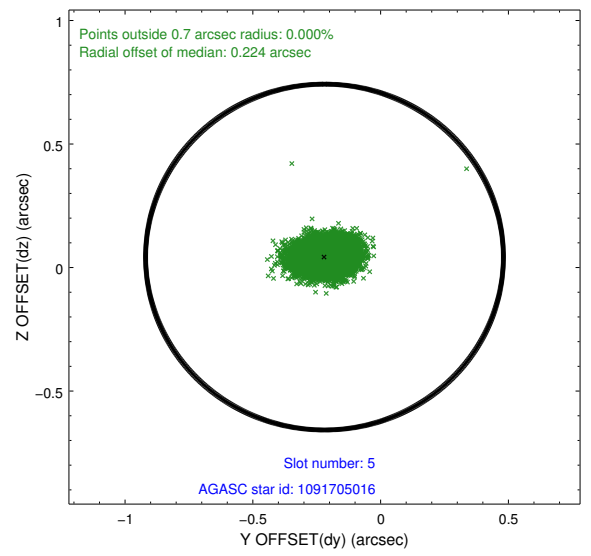
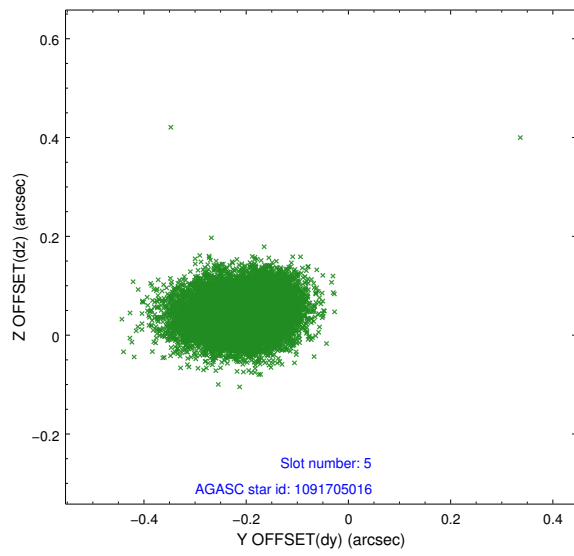
2.4.1 Slot 3



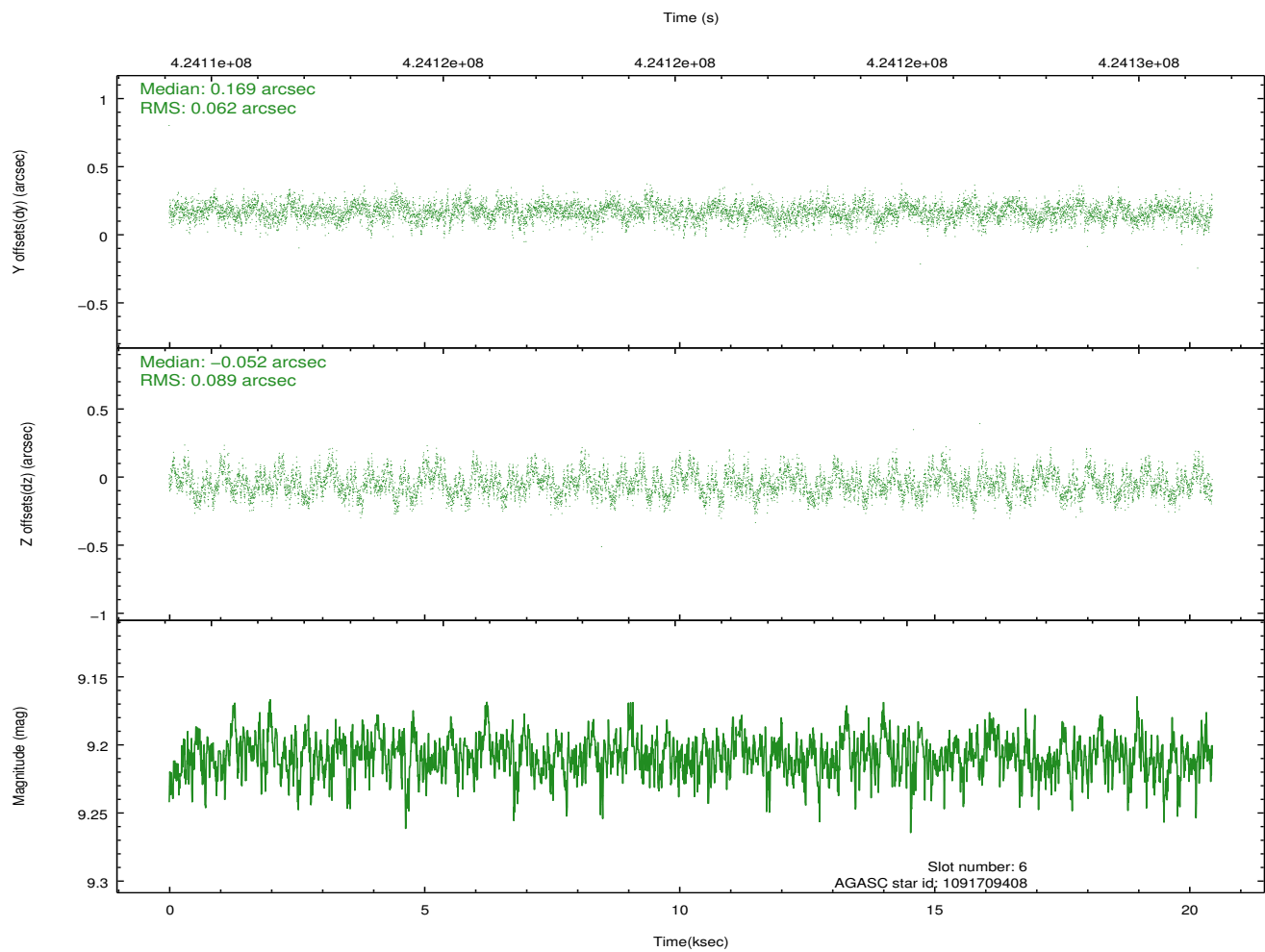
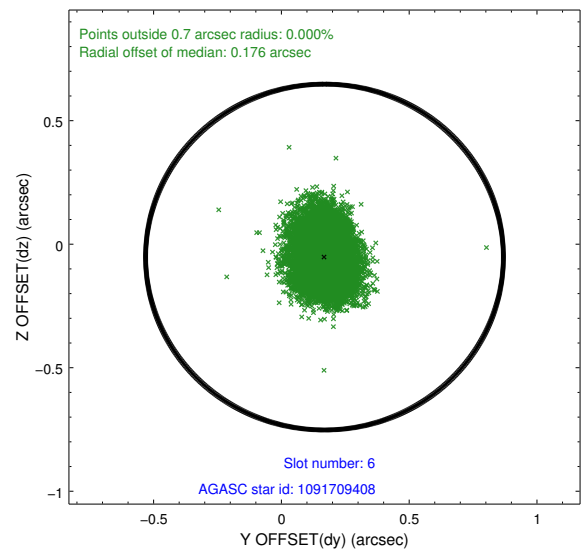
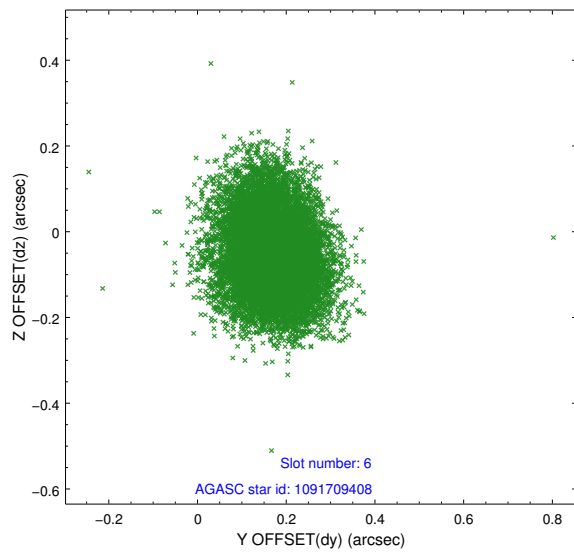
2.4.2 Slot 4



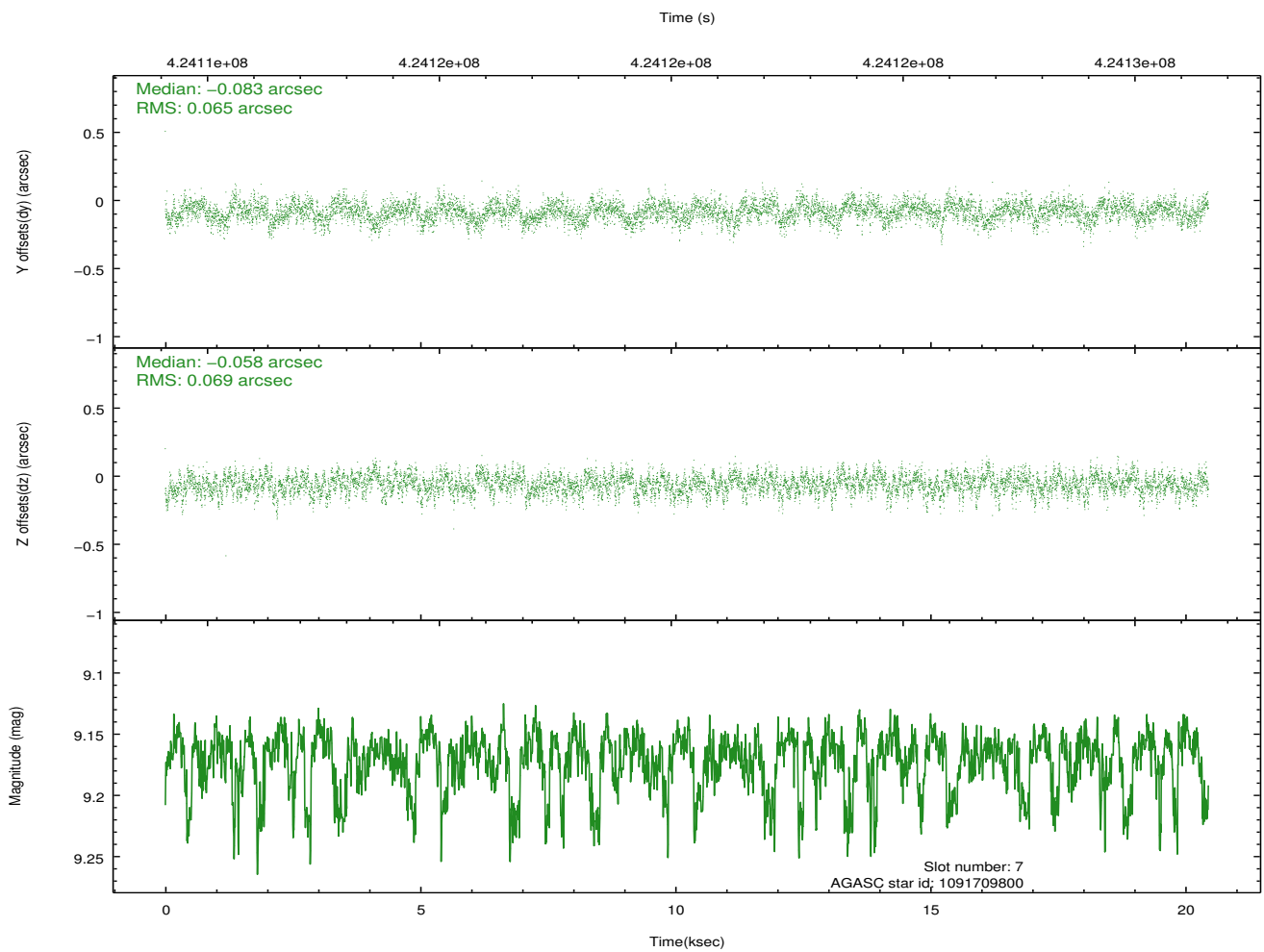
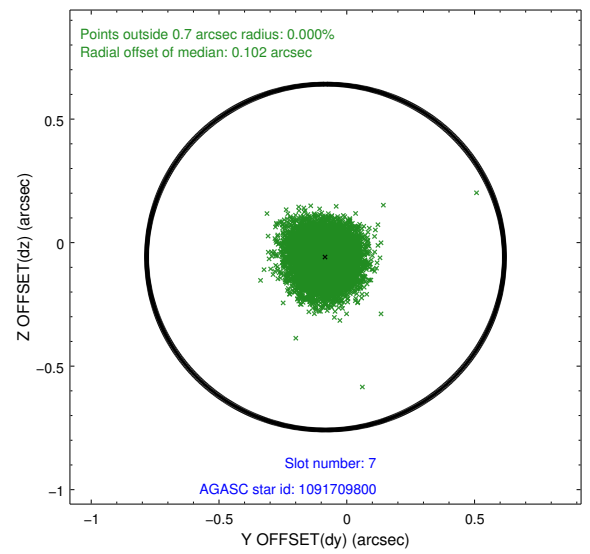
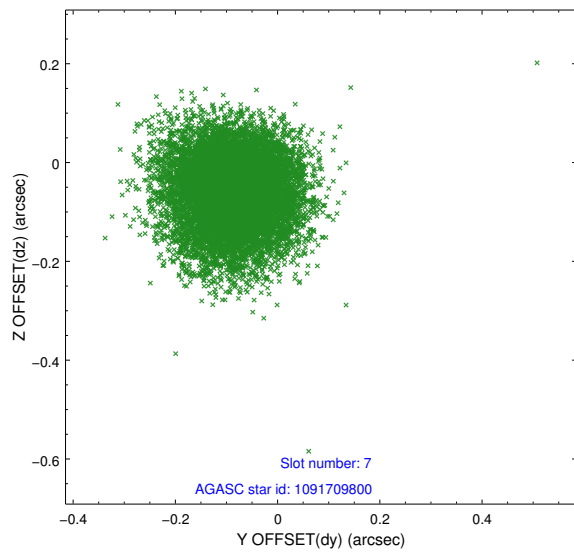
2.4.3 Slot 5



2.4.4 Slot 6

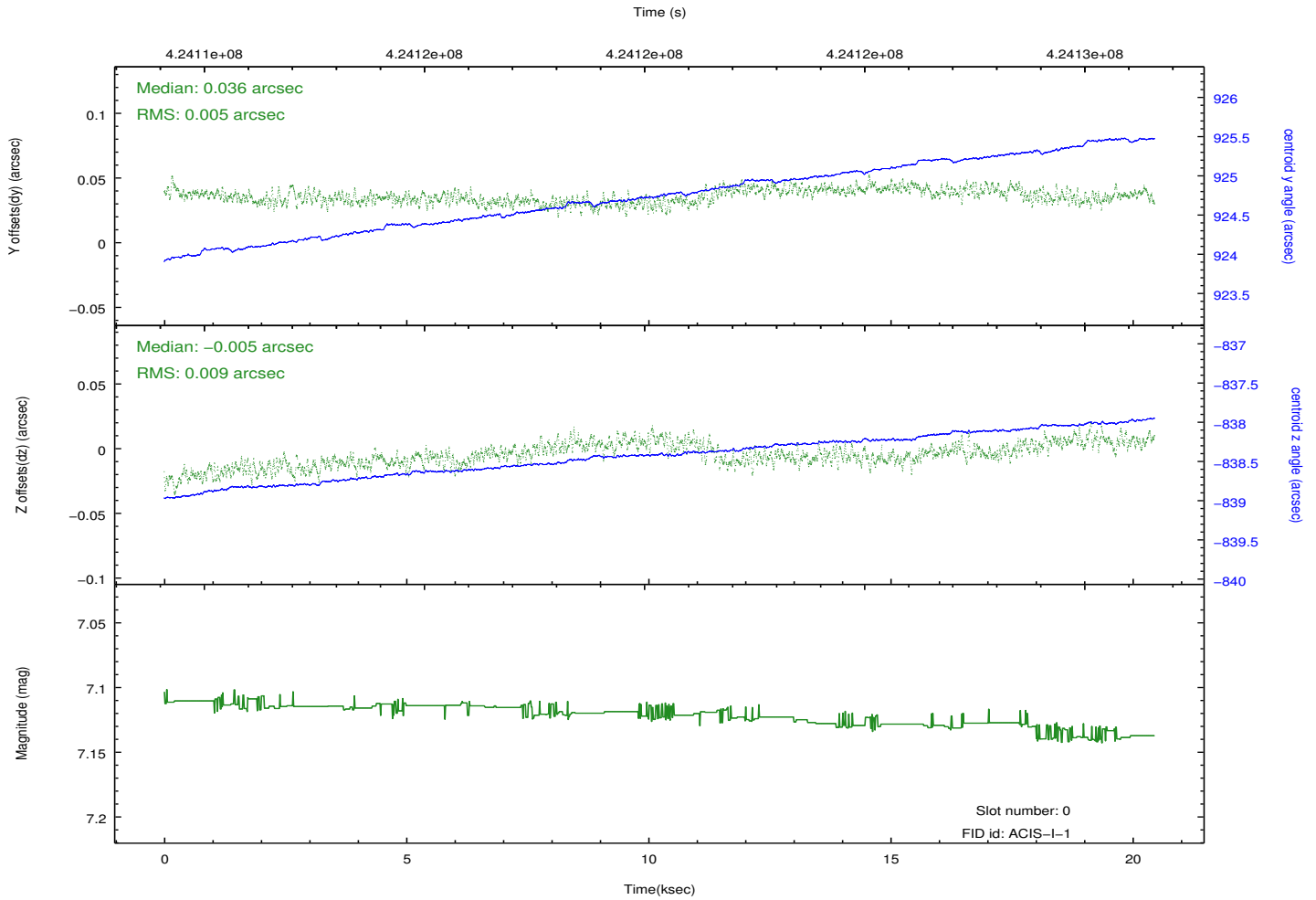
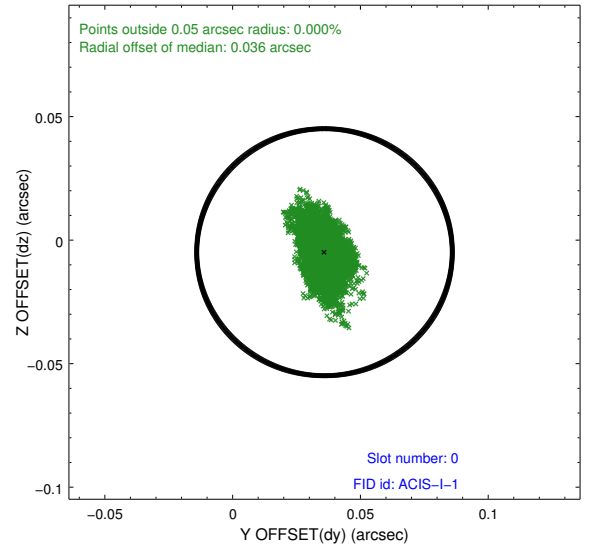
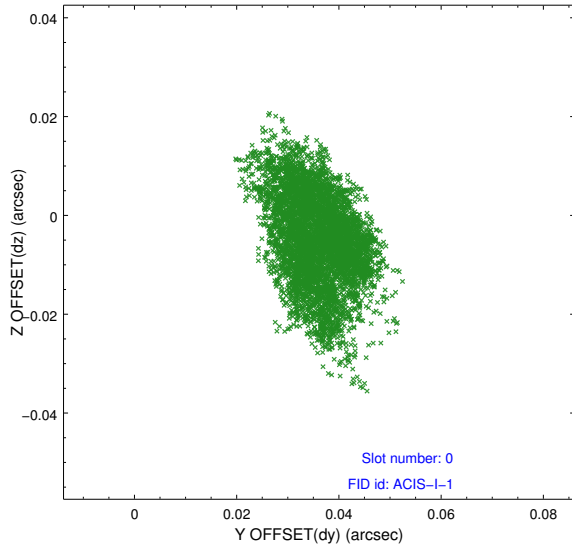


2.4.5 Slot 7

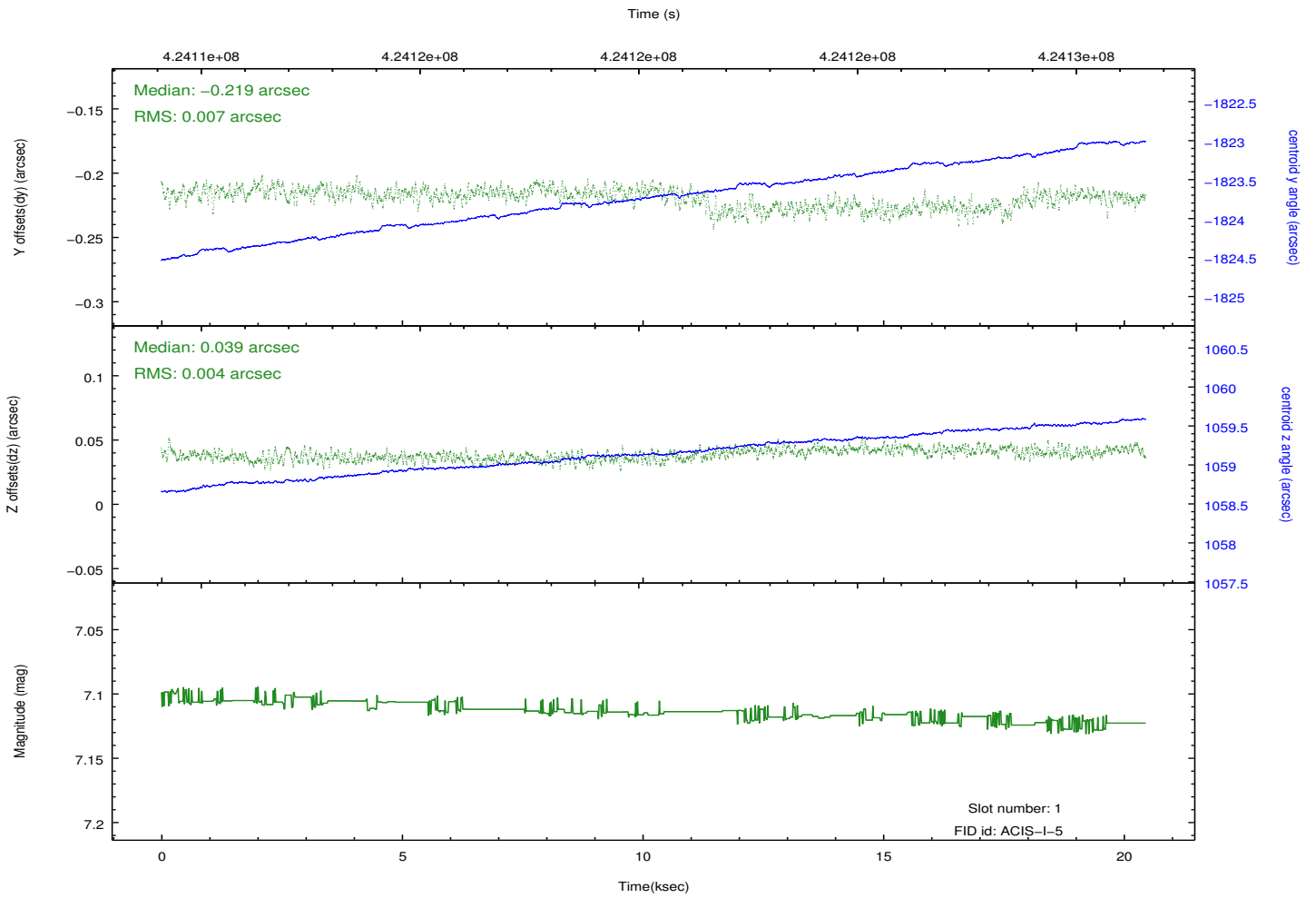
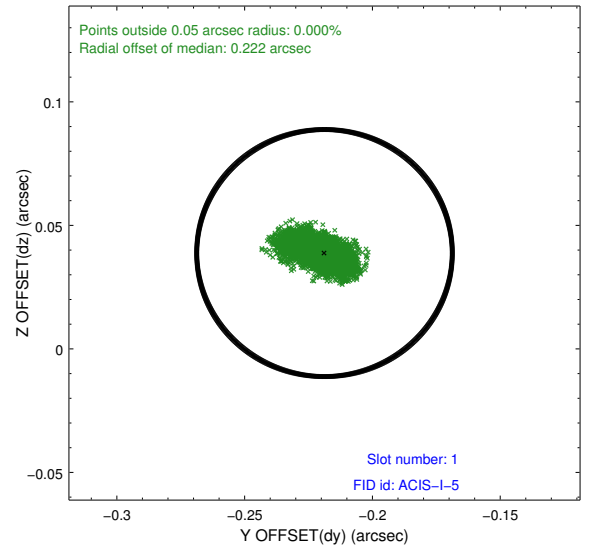
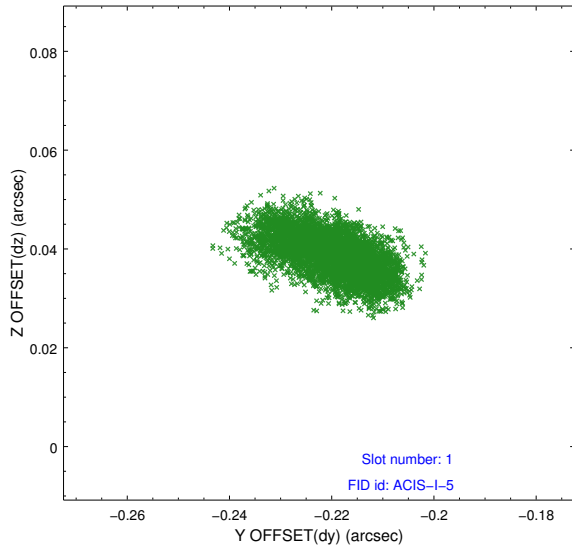


2.5 FID Slots

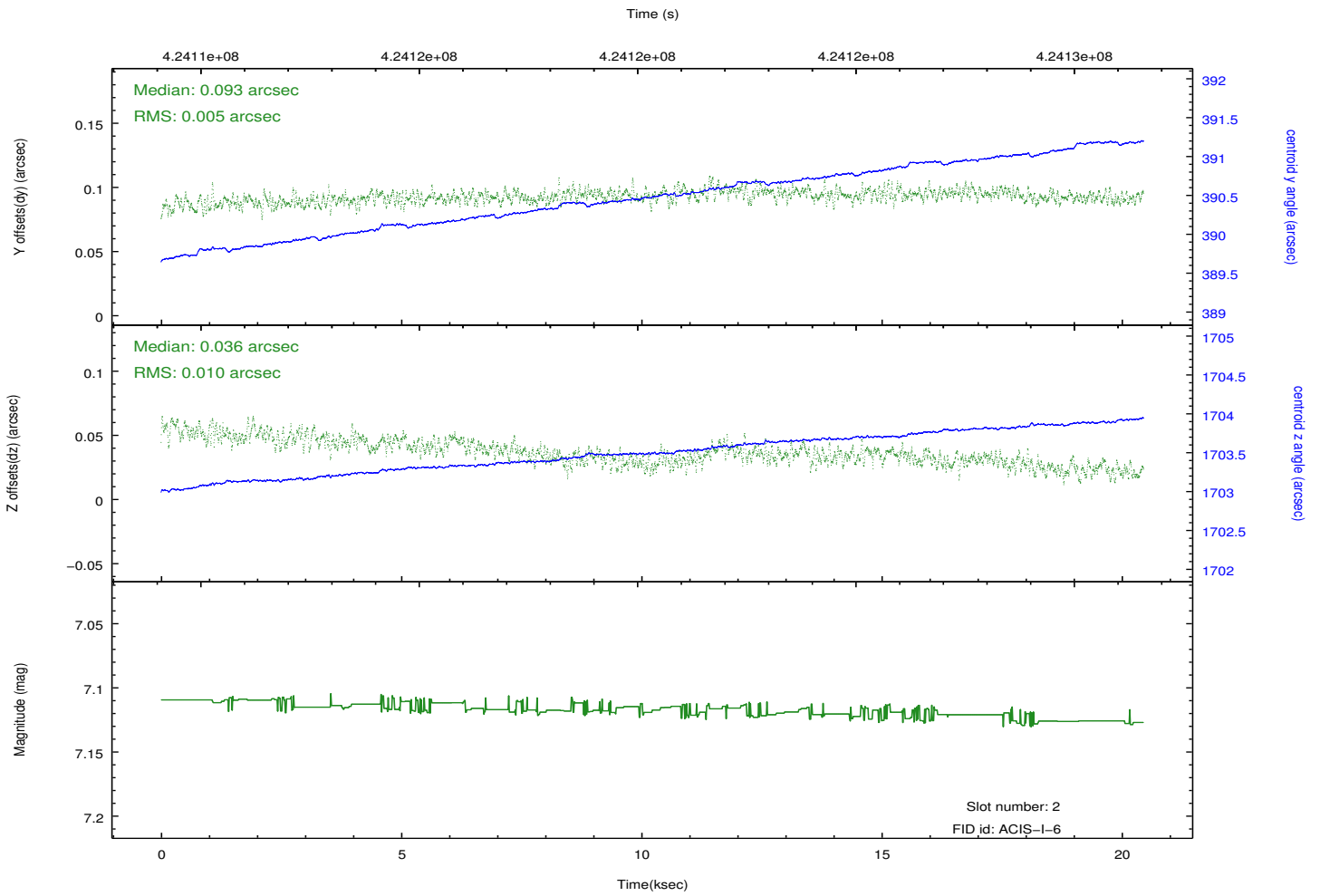
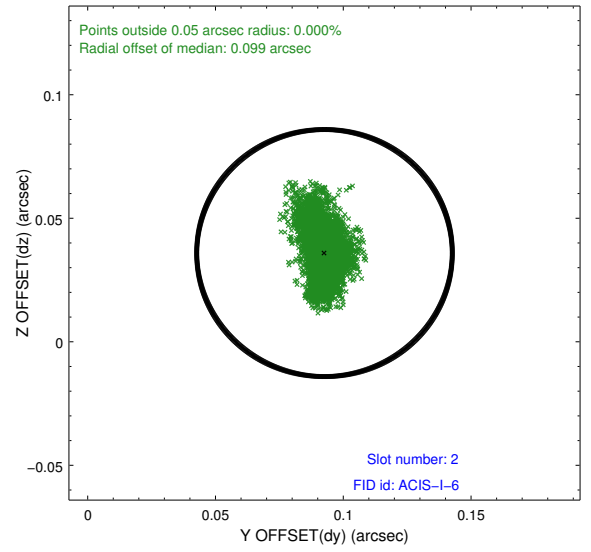
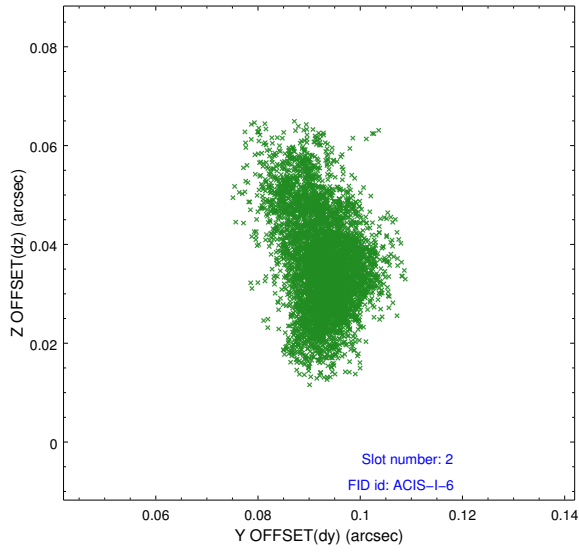
2.5.1 Slot 0



2.5.2 Slot 1



2.5.3 Slot 2



A Summary

A.1 Status

V&V Scientist	Jen Lauer
V&V Date (YYYY-MM-DD)	2012.02.14
V&V Edition	1
V&V Disposition and Status	OK
V&V Charge Time	20.054358864844

A.2 Comments

Joint proposal: NOAO