

V&V Reference Report

L2 ASCDS Version : 8.4.3

Observation 12524 - L2 Version 3
Chandra X-Ray Center

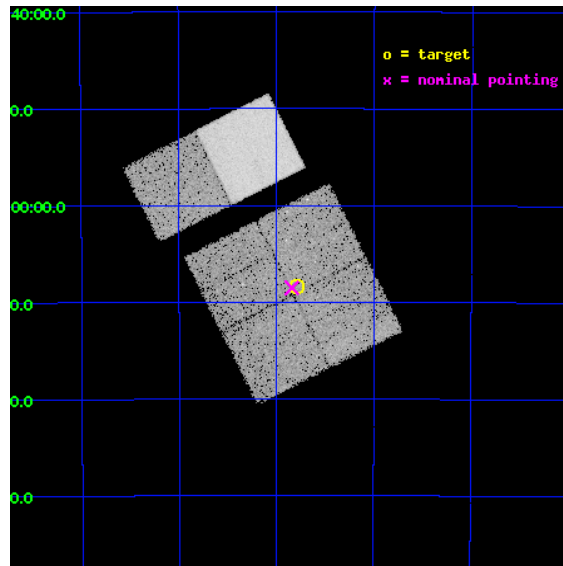
L2 Processing Date : Feb 12 2012

Contents

1	Front	2
2	OBI	3
2.1	OBI	3
2.1.1	Images	3
2.1.2	Bias	3
2.1.3	Parameters	4
2.1.4	Events	4
2.2	Compared Parameters	5
2.3	Aspect	6
2.4	Star Slots	9
2.4.1	Slot 3	9
2.4.2	Slot 4	10
2.4.3	Slot 5	11
2.4.4	Slot 6	12
2.4.5	Slot 7	13
2.5	FID Slots	14
2.5.1	Slot 0	14
2.5.2	Slot 1	15
2.5.3	Slot 2	16
A	Summary	17
A.1	Status	17
A.2	Comments	17

1 Front

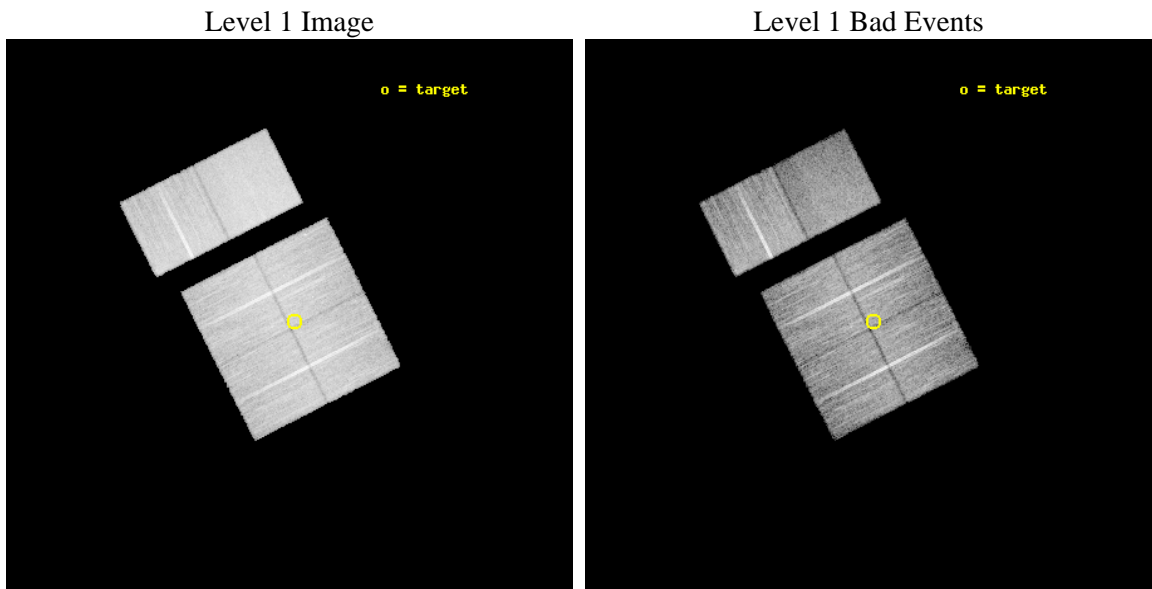
seq_num	401265	Sequence number
obs_id	12524	Observation id
title	Census of the Normal Spiral Arm Region	Proposal title
observer	Dr. John Tomsick	Principal investigator
object	Norma Region	Source name
dtcycle	0	
cycle	P	events from which exps? Prim/Second/Both
ra_targ	248.948619	Observer's specified target RA [deg]
dec_targ	-47.140595	Observer's specified target Dec [deg]
ra_nom	248.96033357231	Nominal RA [deg]
dec_nom	-47.141940244368	Nominal Dec [deg]
roll_nom	333.21727500158	Nominal Roll [deg]
revision	3	Processing version of data
ontime	19756.79992646	Sum of GTIs [s]
livetime	19506.627429674	Livetime [s]
ontime0	19756.79992646	Sum of GTIs [s]
ontime1	19756.79992646	Sum of GTIs [s]
ontime2	19756.79992646	Sum of GTIs [s]
ontime3	19756.79992646	Sum of GTIs [s]
ontime6	19756.79992646	Sum of GTIs [s]
ontime7	19756.79992646	Sum of GTIs [s]
l2events	134213	Number of level 2 events



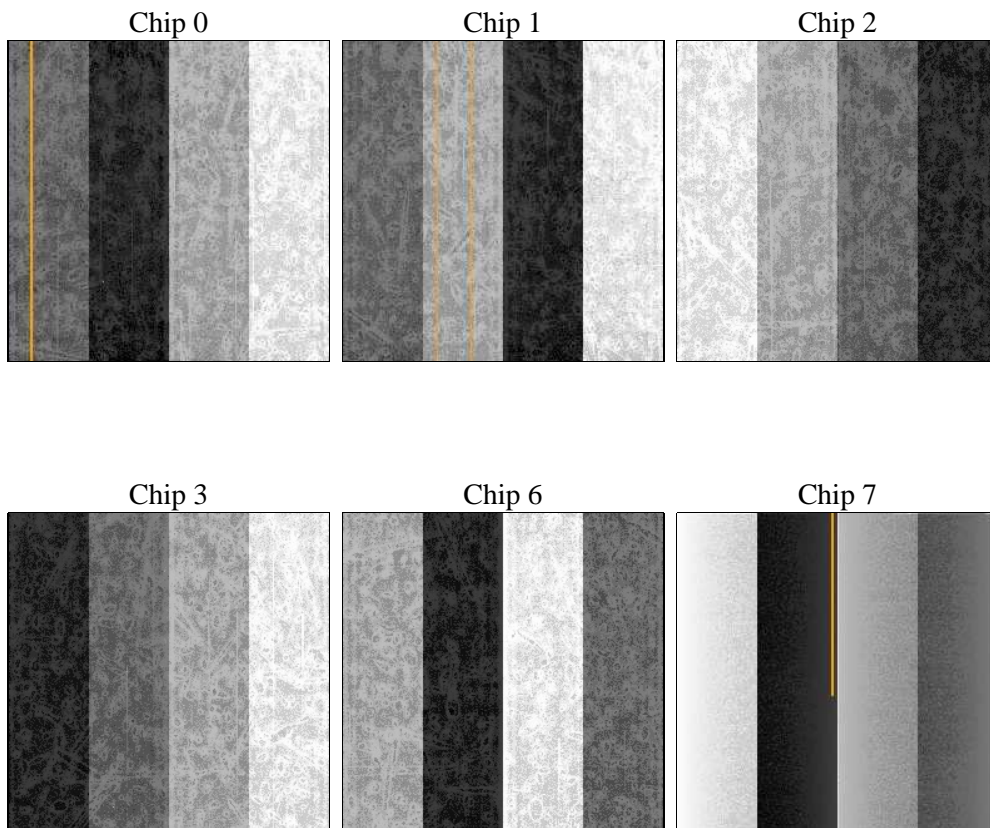
2 OBI

2.1 OBI

2.1.1 Images



2.1.2 Bias



2.1.3 Parameters

obi_num	0	Obi number	sched_exp_time	20000.000000	[s] Scheduled observation exposure time
ascdsver	8.4.3	Processing system revision	ontime	19756.79992646	Sum of GTIs [s]
caldsver	4.4.7	 	ontime0	19756.79992646	Sum of GTIs [s]
date	2012-02-12T11:26:37	Date and time of file creation	ontime1	19756.79992646	Sum of GTIs [s]
revision	3	Processing version of data	ontime2	19756.79992646	Sum of GTIs [s]
			ontime3	19756.79992646	Sum of GTIs [s]
			ontime6	19756.79992646	Sum of GTIs [s]
			ontime7	19756.79992646	Sum of GTIs [s]
			l1events	771320	Number of level 1 events

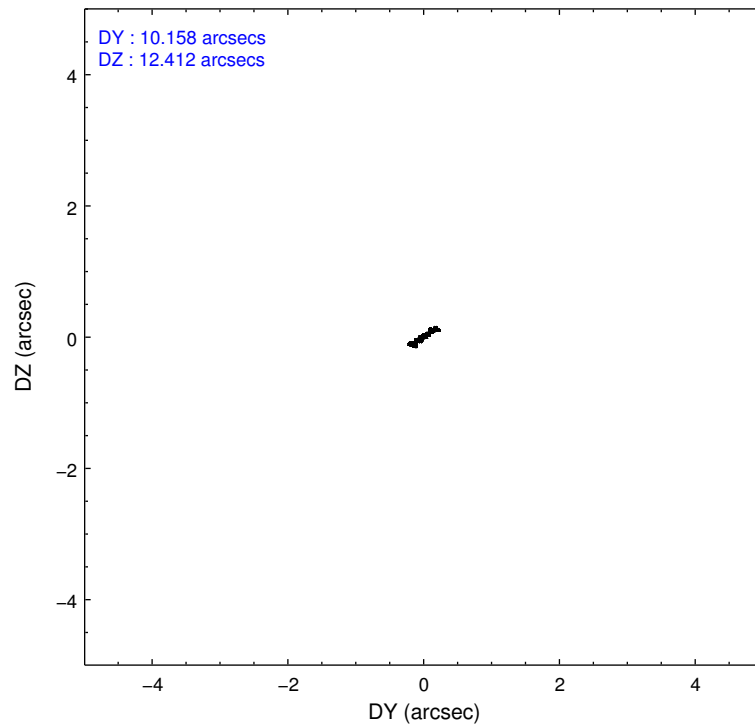
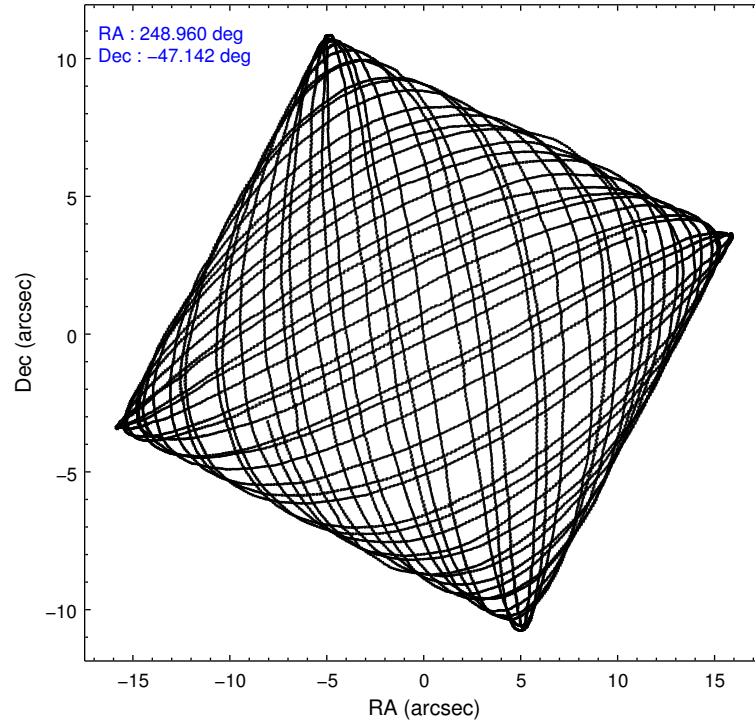
2.1.4 Events

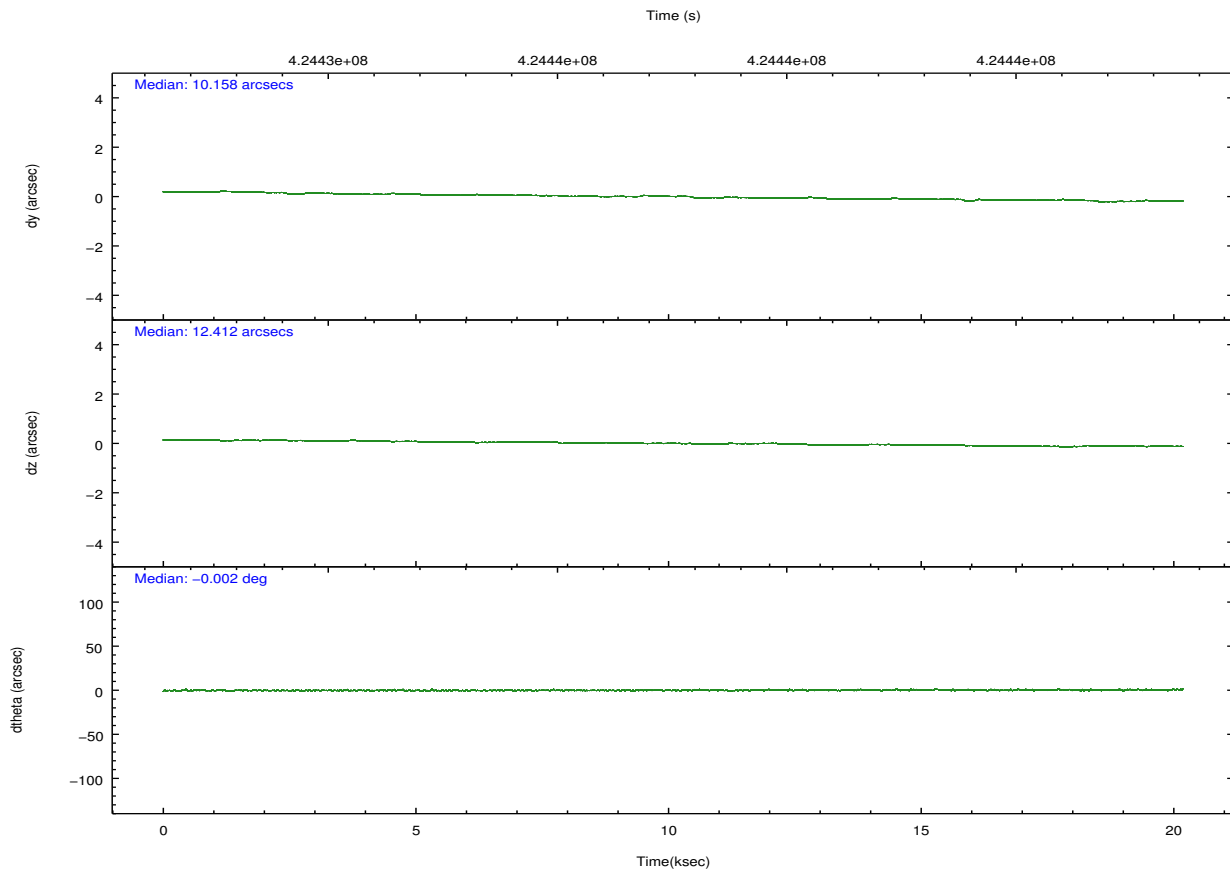
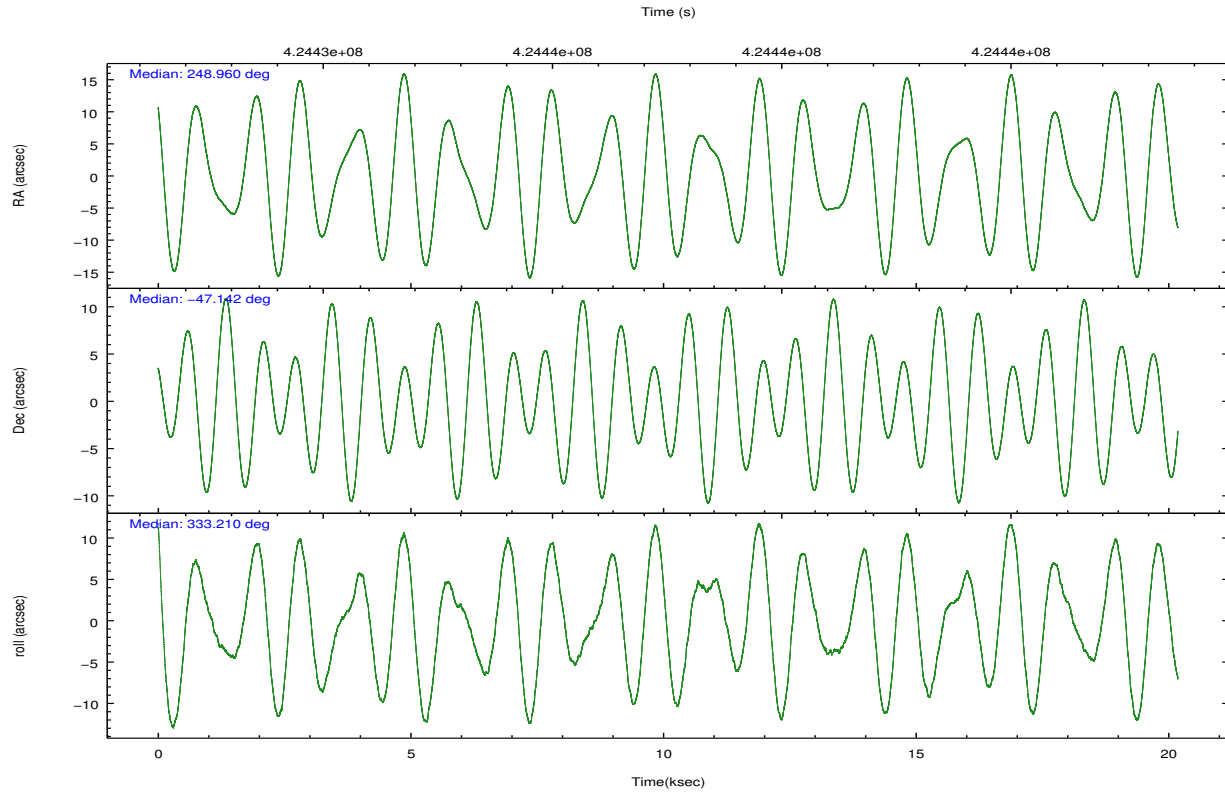
	ccd 0	ccd 1	ccd 2	ccd 3	ccd 6	ccd 7		ccd 0	ccd 1	ccd 2	ccd 3	ccd 6	ccd 7
level 1 events	113795	116833	125985	122206	134051	158450	grade 0 events	5793	6288	5746	5866	5678	6425
rejected events	98607	100450	111383	107497	118493	87758		5%	5%	4%	4%	4%	4%
rejected %	86%	85%	88%	87%	88%	55%	grade 1 events	81	84	77	83	66	187
								0%	0%	0%	0%	0%	0%
							grade 2 events	3451	3679	3398	3071	3405	14498
								3%	3%	2%	2%	2%	9%
							grade 3 events	1613	1587	1423	1503	1507	6165
								1%	1%	1%	1%	1%	3%
							grade 4 events	1441	1559	1405	1481	1471	6029
								1%	1%	1%	1%	1%	3%
							grade 5 events	4989	5426	4776	5908	5998	16177
								4%	4%	3%	4%	4%	10%
							grade 6 events	2894	3272	2634	2791	3500	37598
								2%	2%	2%	2%	2%	23%
							grade 7 events	93533	94938	106526	101503	112426	71371
								82%	81%	84%	83%	83%	45%

2.2 Compared Parameters

Parameter	Planned	Actual	Parameter	Planned	Actual
Instrument	ACIS	ACIS	Obspar format version number	7	7
Detector	ACIS-012367	ACIS-012367	Obspar file type	PREDICTED	ACTUAL
Grating	NONE	NONE	Obspar update status	NONE	UPDATED
Data mode	VFAINT	VFAINT	CCD I0 on	Y	Y
Observation mode	POINTING	POINTING	CCD I1 on	Y	Y
[deg] Pointing RA	248.919985	248.960333572309	CCD I2 on	Y	Y
[deg] Pointing Dec	-47.143568	-47.14194024436824	CCD I3 on	Y	Y
[deg] Pointing Roll	332.979011	333.2172750015815	CCD S0 on	N	N
[mm] SIM focus pos	-0.782348	-0.7809083437167272	CCD S1 on	N	N
[mm] SIM defocus	0	0.001439871863259334	CCD S2 on	O2	Y
[mm] SIM translation stage pos	-233.592463	-233.5899487761303	CCD S3 on	O1	Y
[mm] SIM translation stage offset	0	-0.002504226799430853	CCD S4 on	N	N
[s] Observation start time (MET)	424427605.184000	424427228.9086	CCD S5 on	N	N
Observation start date	2011-06-14T08:32:19	2011-06-14T08:27:08	Number of optional ACIS chips dropped	0	0
[s] Observation end time (MET)	424447605.184000	424447738.64716	On-chip summing requested	N	N
Observation end date	2011-06-14T14:05:39	2011-06-14T14:08:58	Subarray requested	NONE	NONE
Read mode	TIMED	TIMED	Alternating exposures requested	N	N
			[s] Primary exposure time	0.000000	3.2

2.3 Aspect



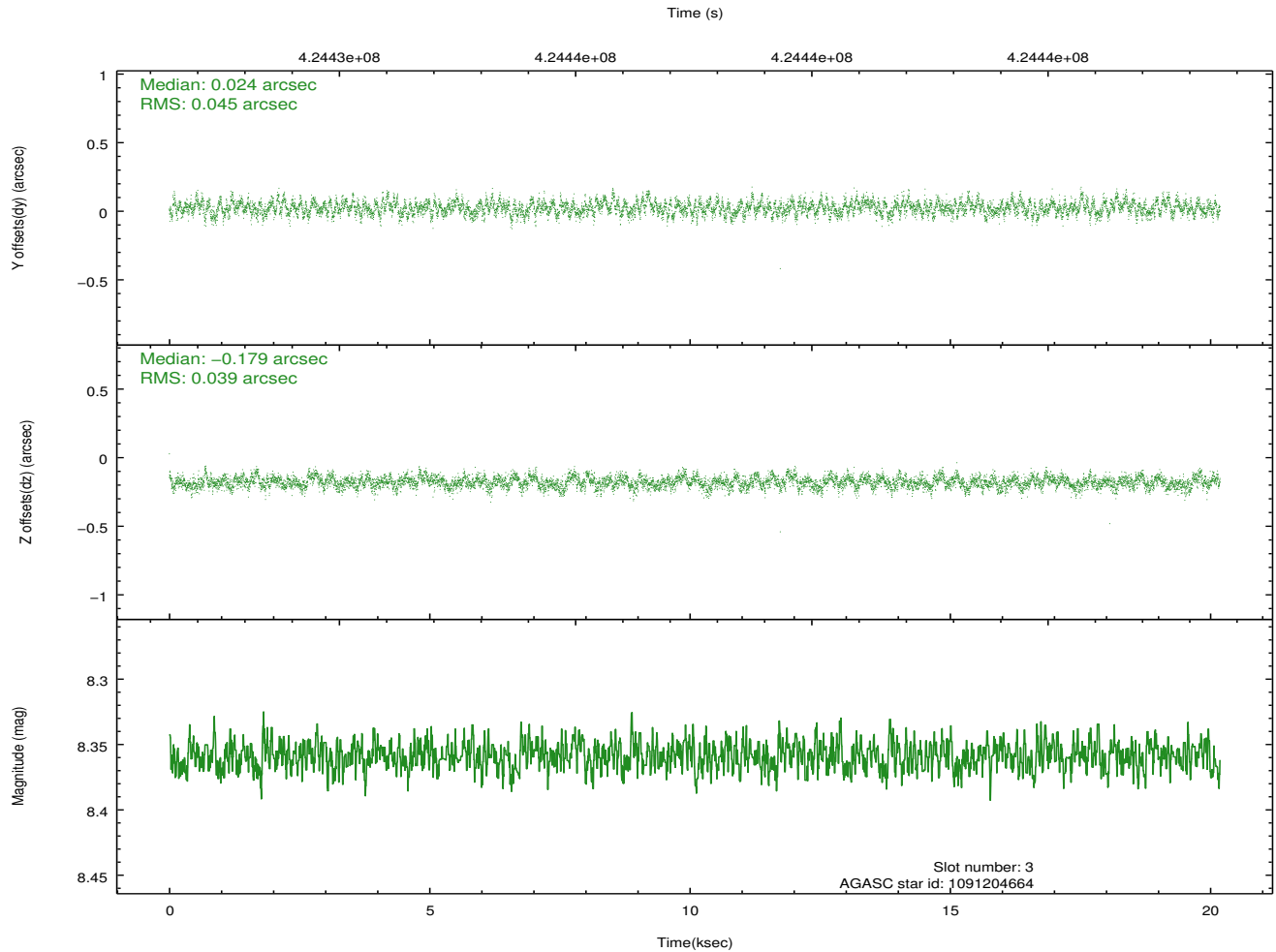
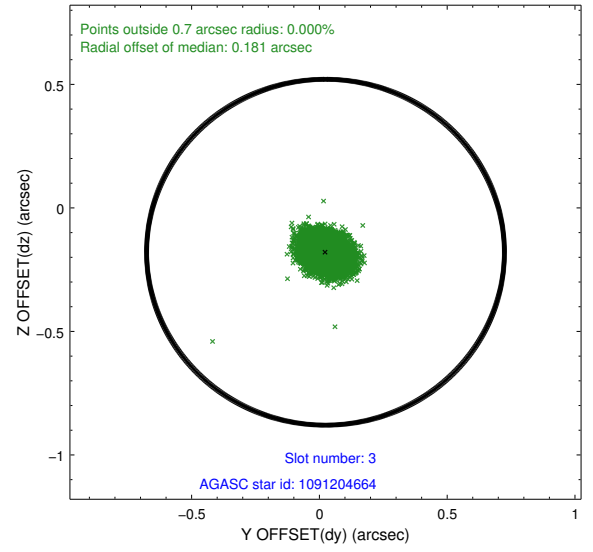
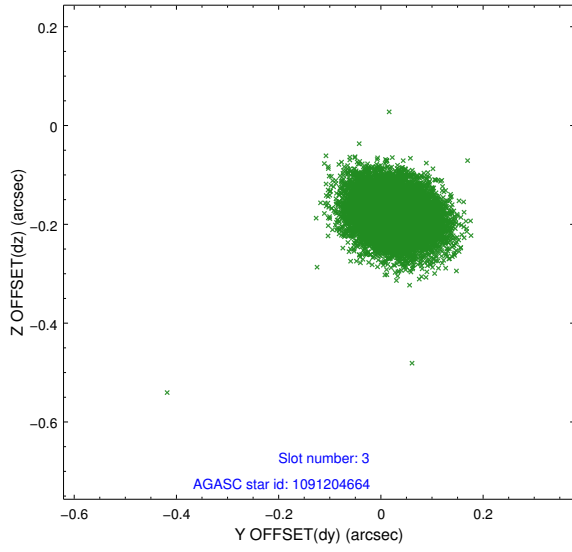


Slot Statistics

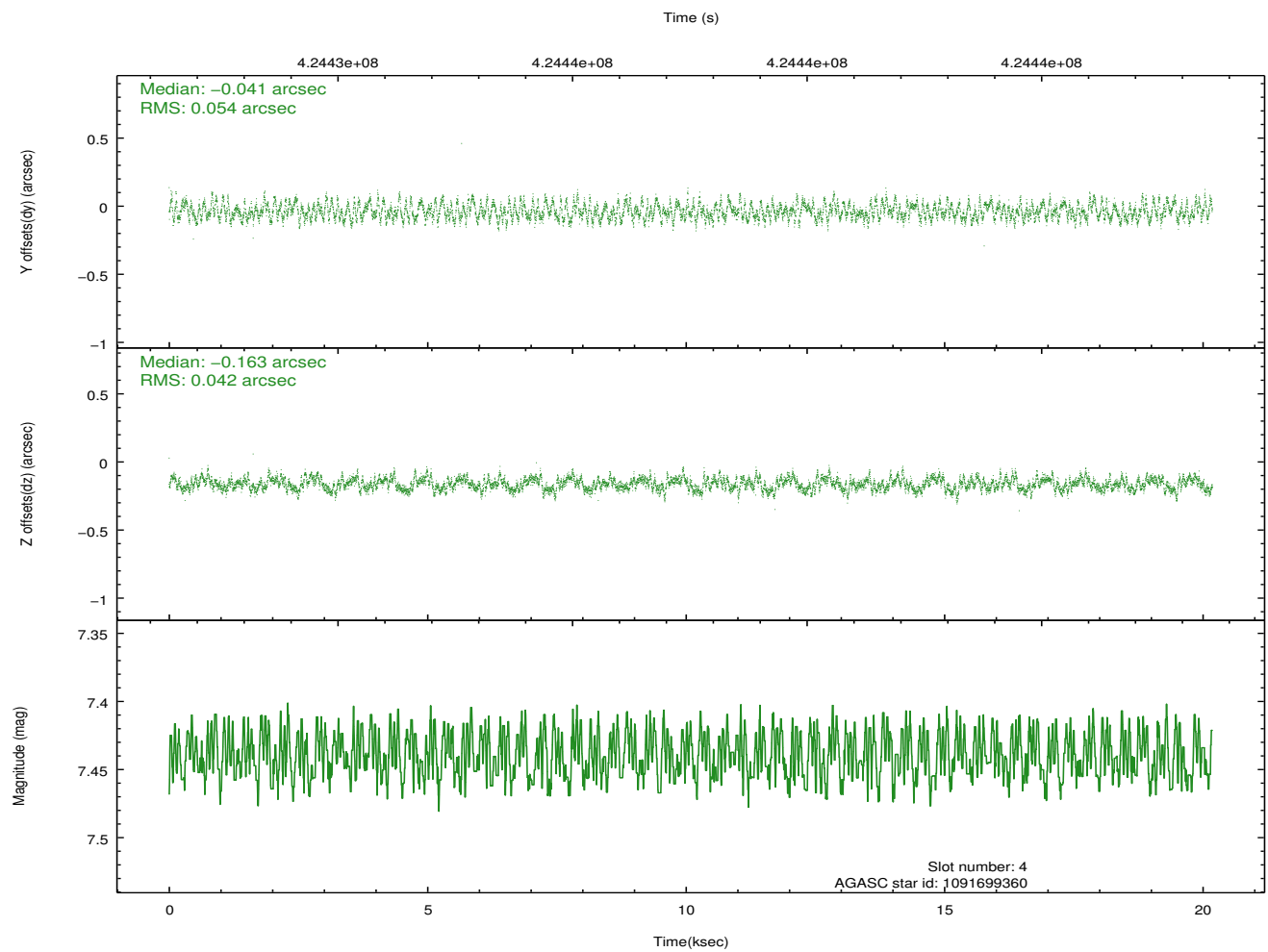
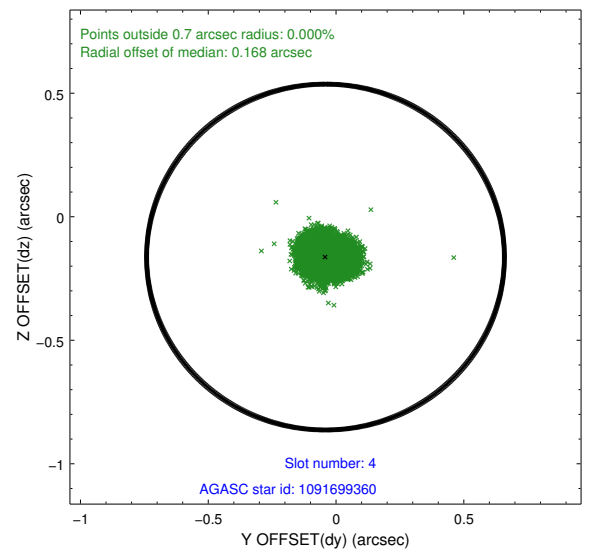
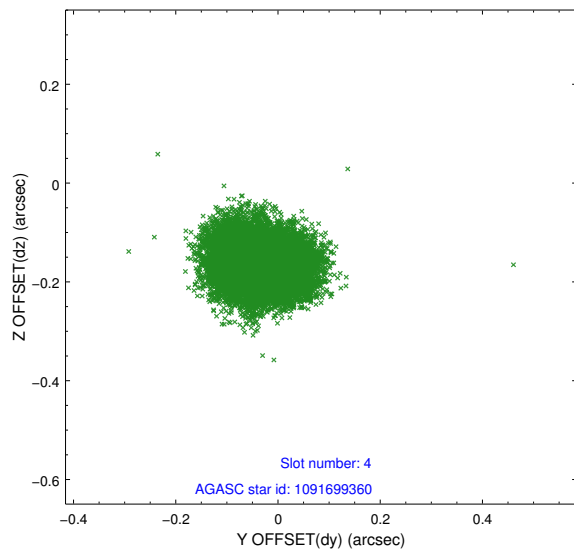
slot	status	id	mag	n_pts	med_dy	med_dz	dr1	dr2	ra	dec	mean_y	mean_z
0	FID	ACIS-I-1	7.16	4923	0.090	-0.047	0.007	0.012	0.000000	0.000000	929.54	-835.94
1	FID	ACIS-I-5	7.15	4923	-0.231	0.088	0.006	0.011	0.000000	0.000000	-1818.79	1061.59
2	FID	ACIS-I-6	7.16	4923	0.050	0.030	0.007	0.011	0.000000	0.000000	394.84	1706.24
3	GUIDE	1091204664	8.36	9845	0.024	-0.179	0.063	0.103	248.658352	-46.526357	-1586.24	1684.02
4	GUIDE	1091699360	7.44	9846	-0.041	-0.163	0.075	0.113	248.660725	-47.004364	-794.15	156.57
5	GUIDE	1091709768	7.73	9844	-0.125	0.066	0.060	0.100	249.435228	-47.706899	2035.60	-1242.80
6	GUIDE	1091198192	8.85	9838	0.113	0.083	0.075	0.123	248.317554	-46.532724	-2325.18	1276.11
7	GUIDE	1091702440	8.73	9839	0.031	0.187	0.086	0.141	248.295809	-47.683380	-461.67	-2423.52

2.4 Star Slots

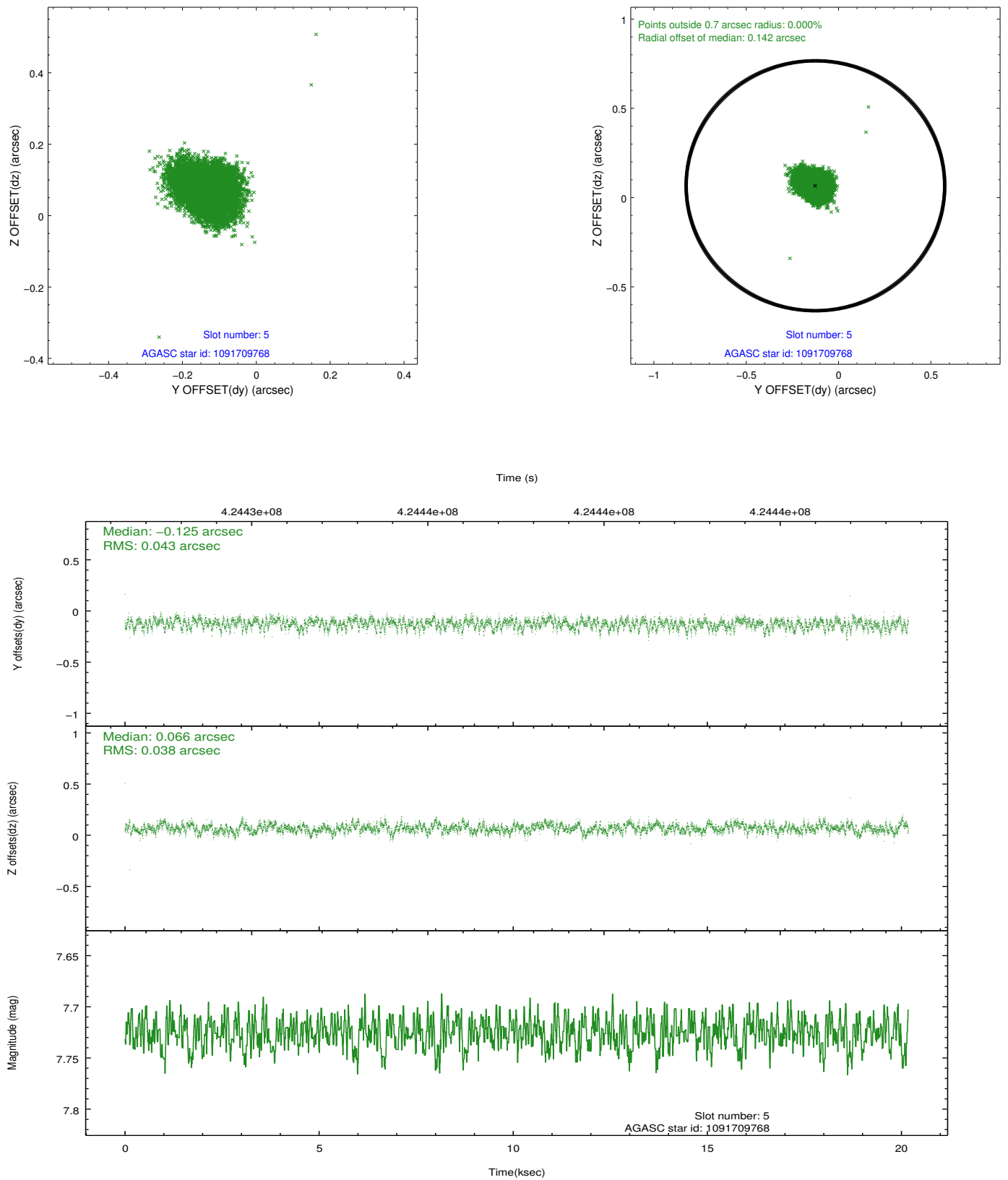
2.4.1 Slot 3



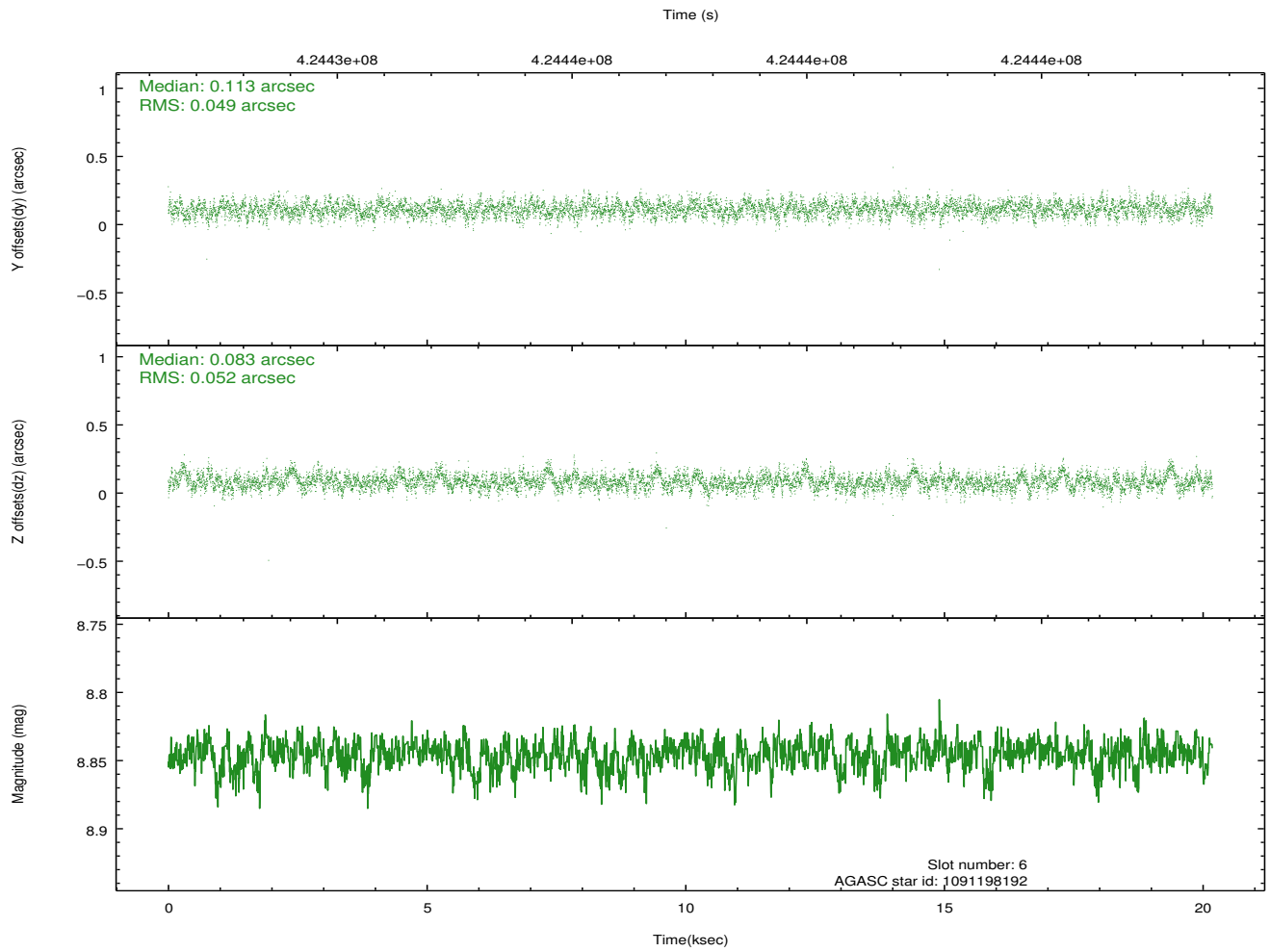
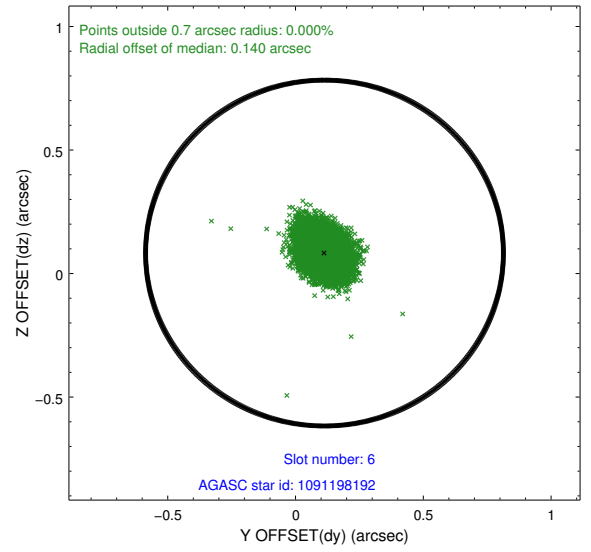
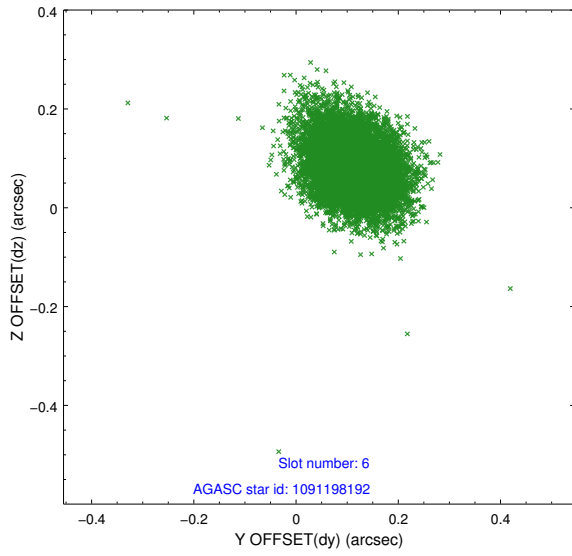
2.4.2 Slot 4



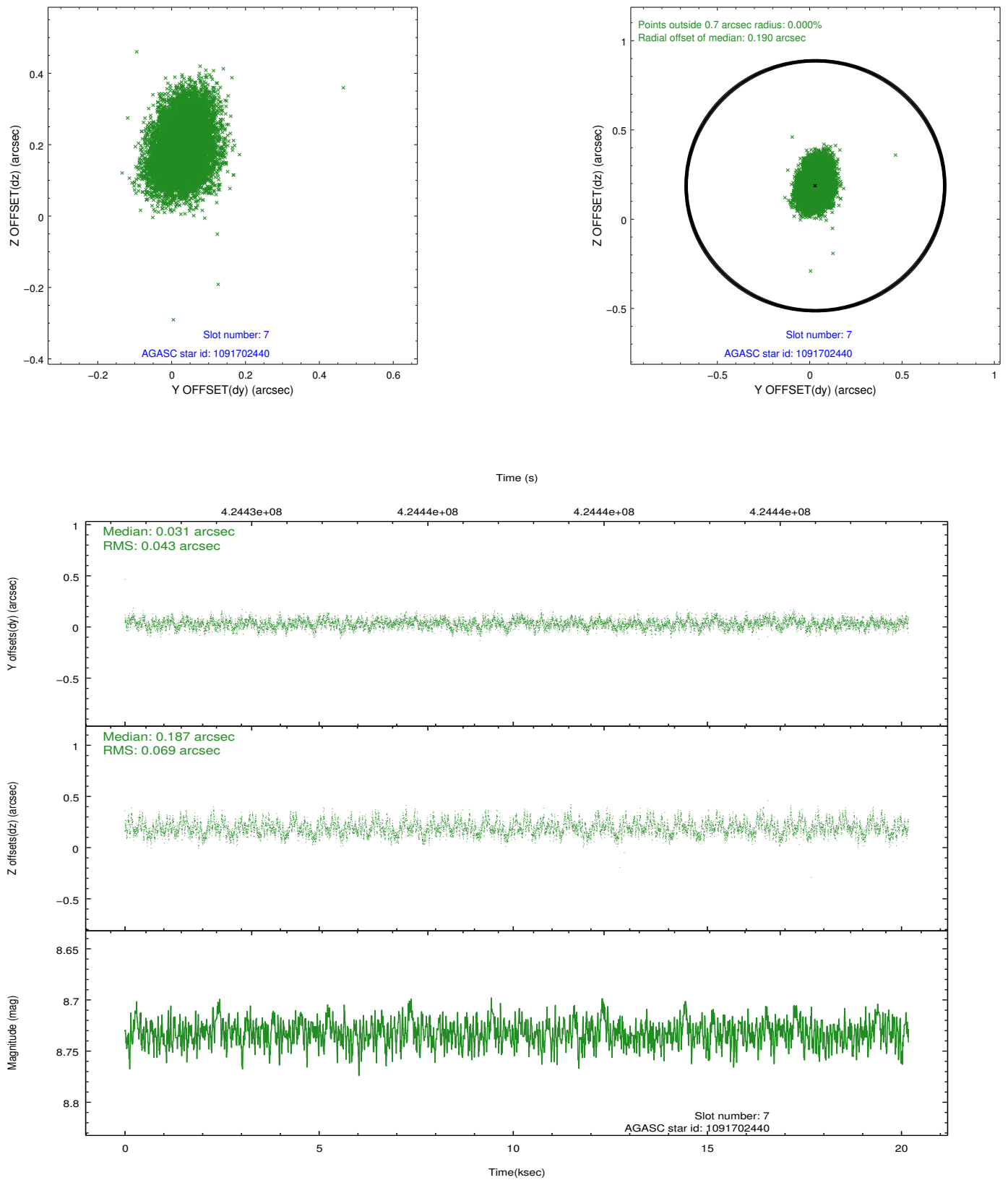
2.4.3 Slot 5



2.4.4 Slot 6

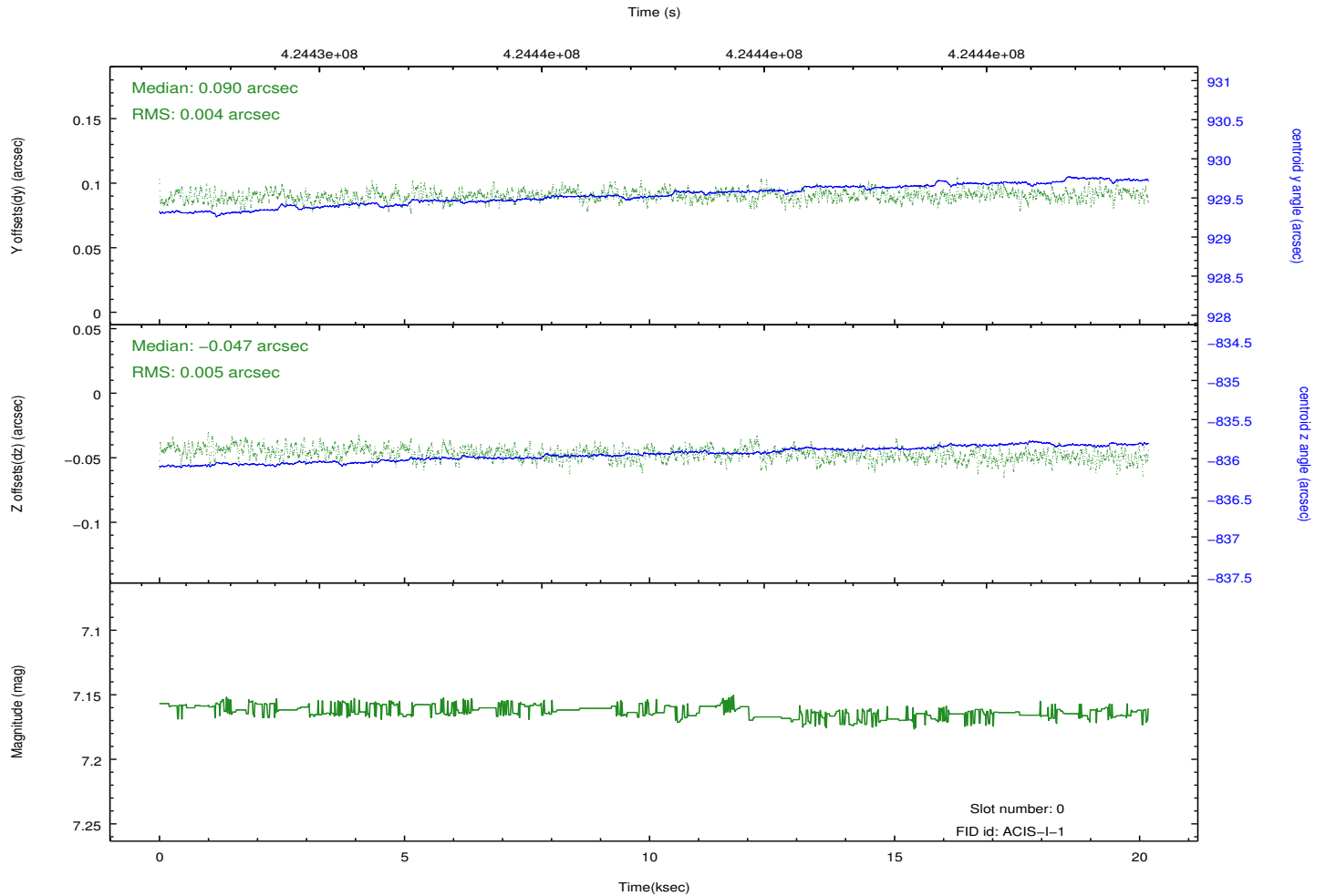
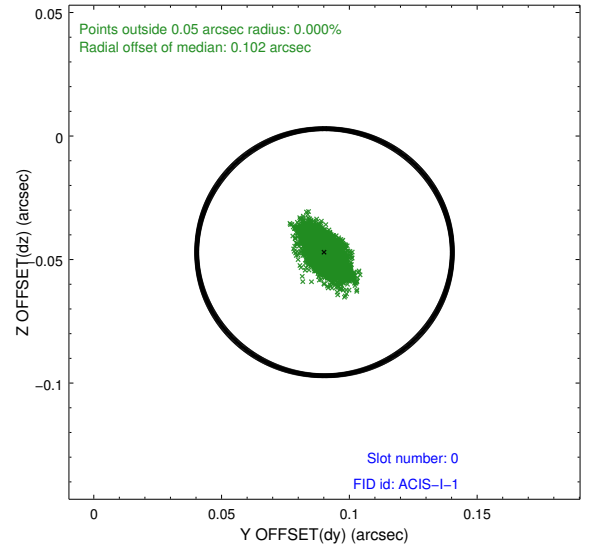
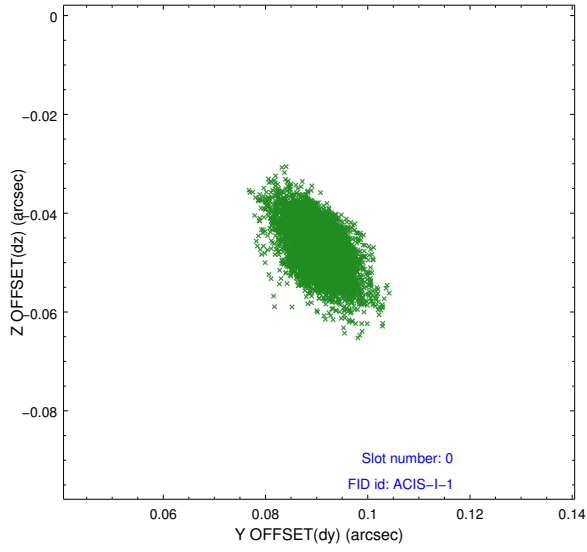


2.4.5 Slot 7

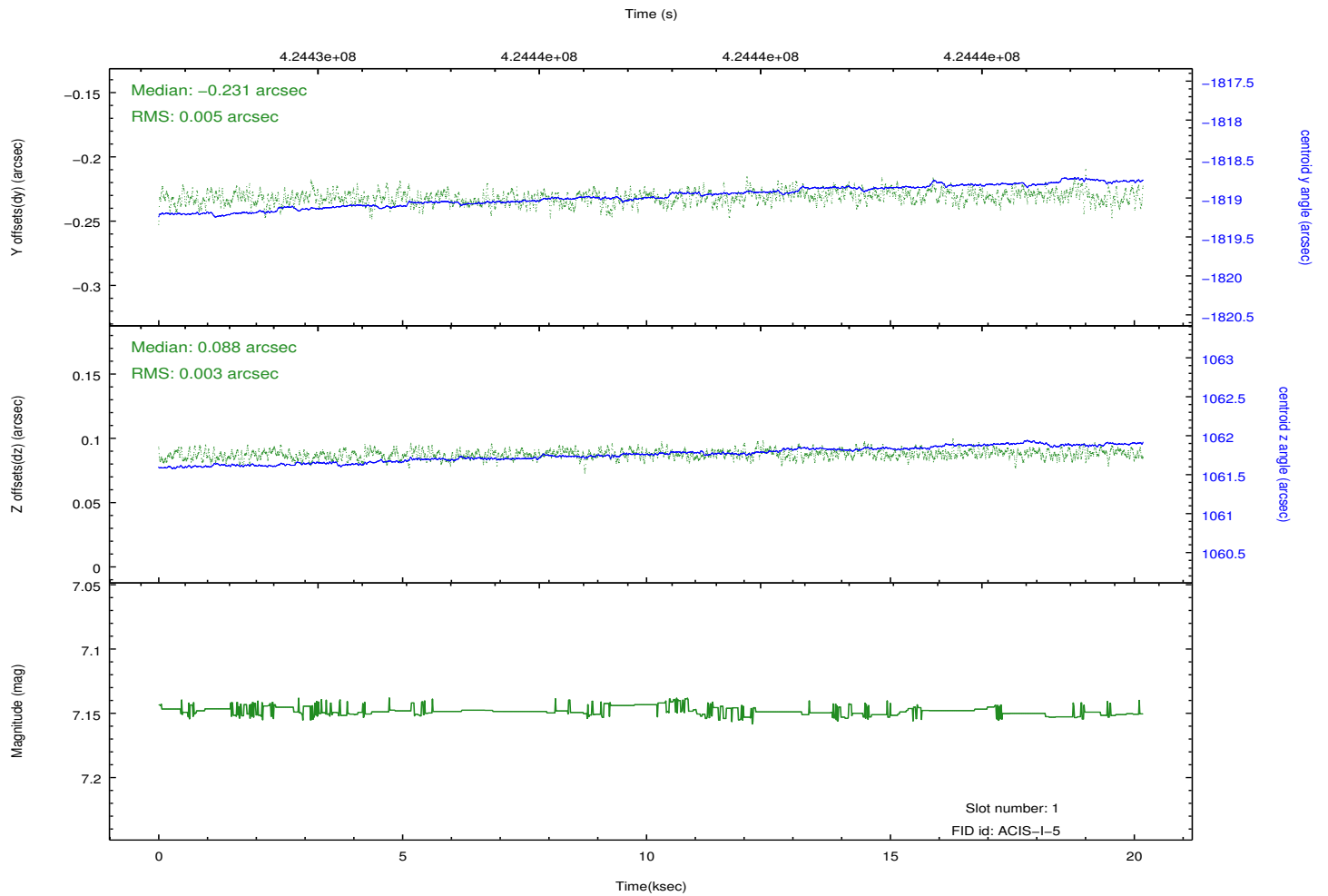
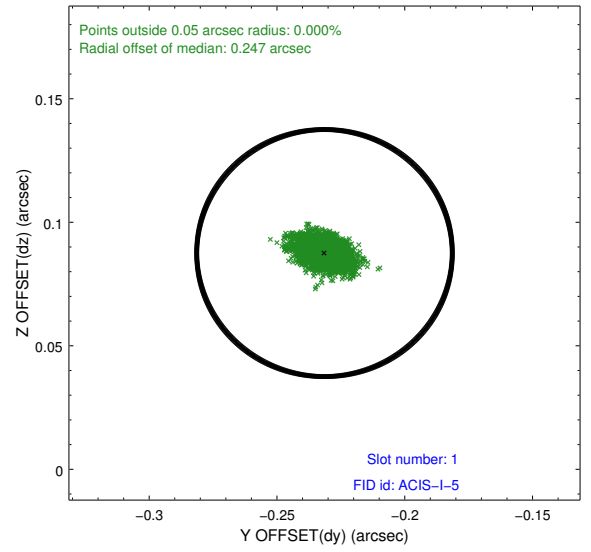
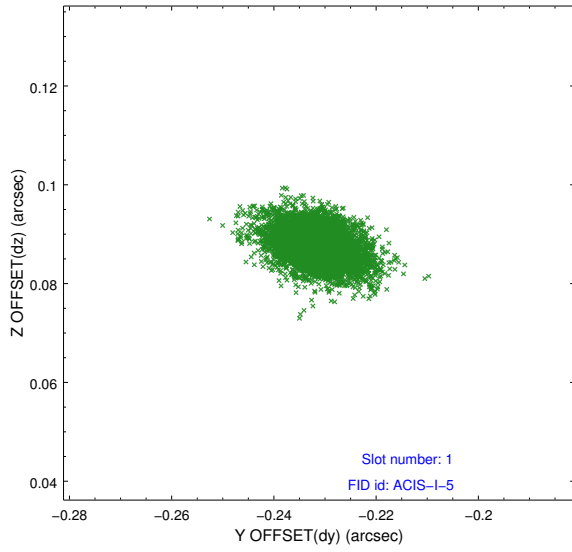


2.5 FID Slots

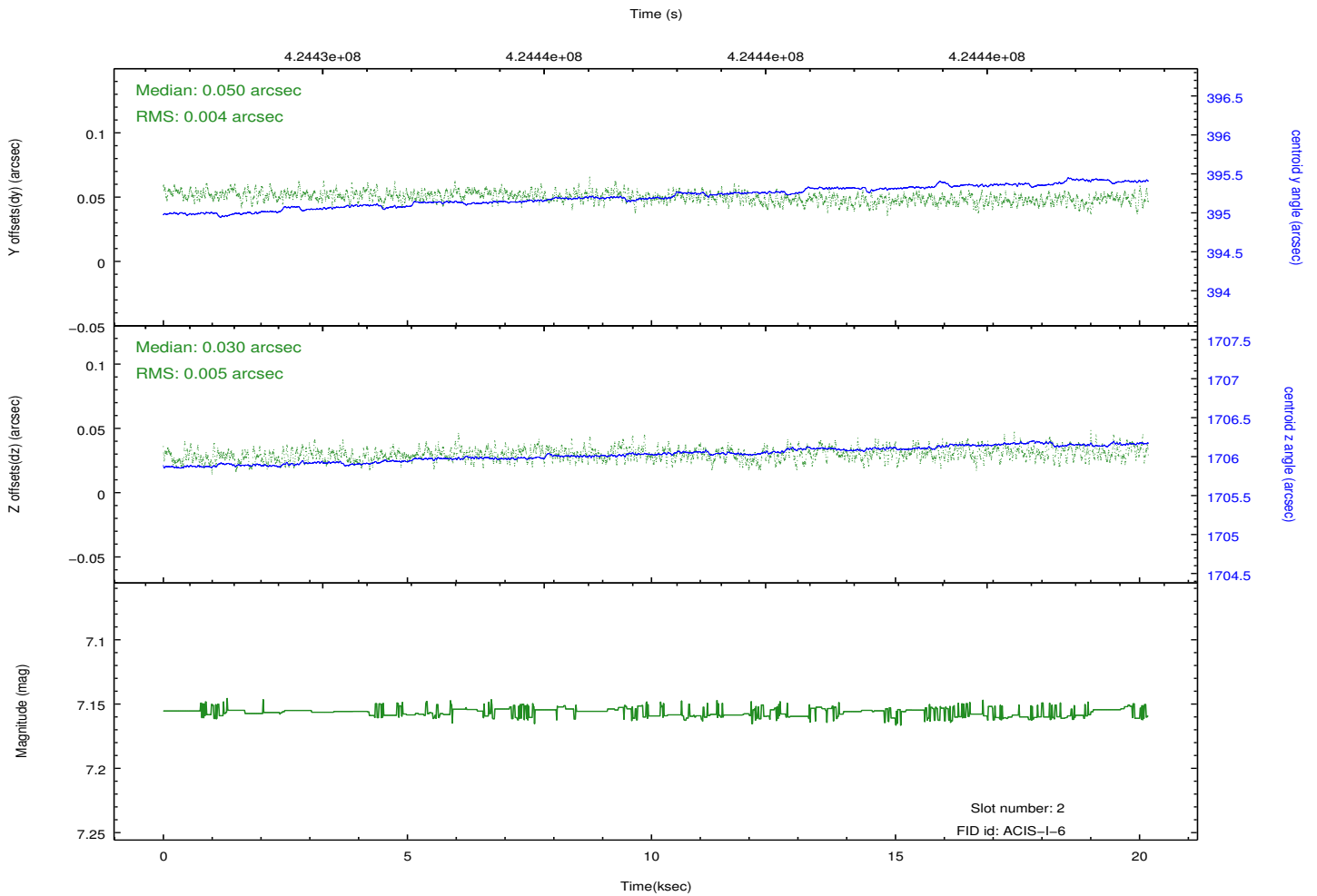
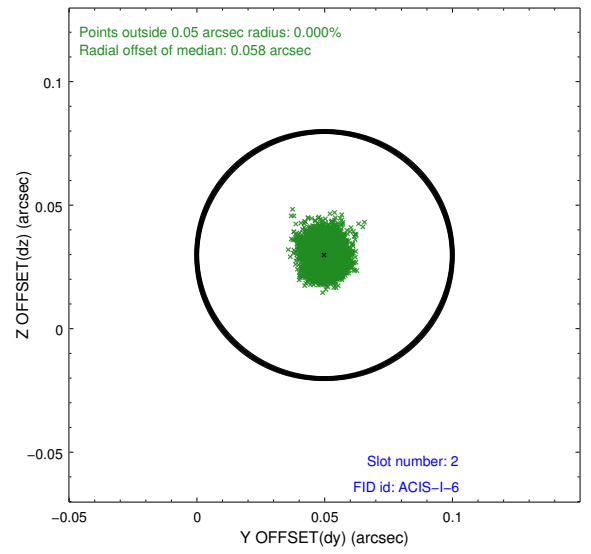
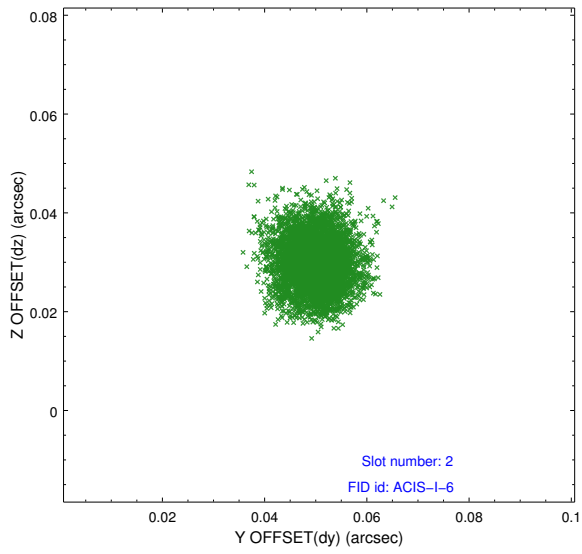
2.5.1 Slot 0



2.5.2 Slot 1



2.5.3 Slot 2



A Summary

A.1 Status

V&V Scientist	Jen Lauer
V&V Date (YYYY-MM-DD)	2012.02.14
V&V Edition	1
V&V Disposition and Status	OK
V&V Charge Time	19.75679992646

A.2 Comments

Joint Proposal: NOAO