

V&V Reference Report

L2 ASCDS Version : 8.4.5

Observation 13674 - L2 Version 1
Chandra X-Ray Center

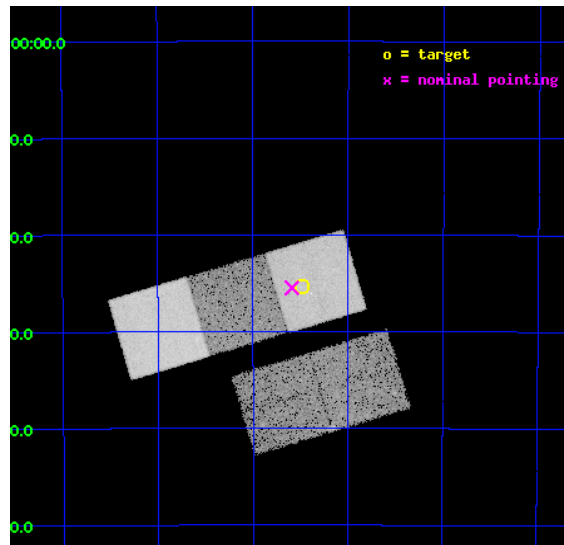
L2 Processing Date : Jun 20 2012

Contents

1	Front	2
2	OBI	3
2.1	OBI	3
2.1.1	Images	3
2.1.2	Bias	3
2.1.3	Parameters	4
2.1.4	Events	4
2.2	Compared Parameters	5
2.3	Aspect	6
2.4	Star Slots	9
2.4.1	Slot 3	9
2.4.2	Slot 4	10
2.4.3	Slot 5	11
2.4.4	Slot 6	12
2.4.5	Slot 7	13
2.5	FID Slots	14
2.5.1	Slot 0	14
2.5.2	Slot 1	15
2.5.3	Slot 2	16
A	Summary	17
A.1	Status	17
A.2	Comments	17

1 Front

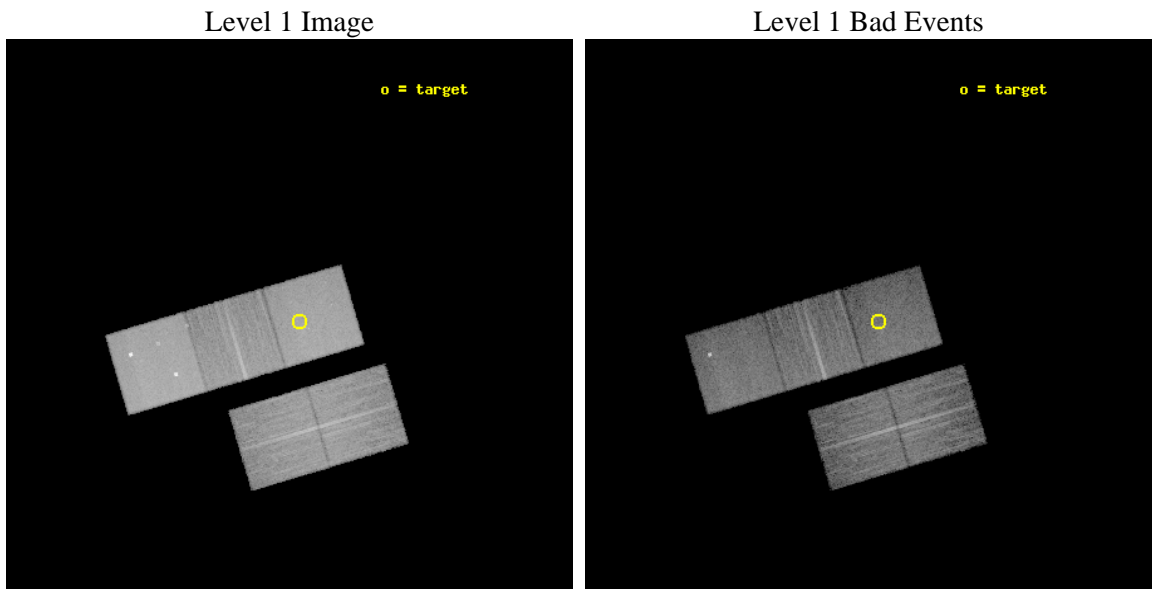
seq_num	300305	Sequence number
obs_id	13674	Observation id
title	Close binary populations in metal-rich globular clusters	Proposal
observer	Prof. Albert Kong	Principal investigator
object	NGC6352	Source name
dtcycle	0	
cycle	P	events from which exps? Prim/Second/Both
ra_targ	261.37125	Observer's specified target RA [deg]
dec_targ	-48.422167	Observer's specified target Dec [deg]
ra_nom	261.39756446746	Nominal RA [deg]
dec_nom	-48.424719542053	Nominal Dec [deg]
roll_nom	343.45263456761	Nominal Roll [deg]
revision	1	Processing version of data
ontime	20066.300154328	Sum of GTIs [s]
livetime	19804.119170217	Livetime [s]
ontime2	20060.018113732	Sum of GTIs [s]
ontime3	20066.300154328	Sum of GTIs [s]
ontime5	20066.300154328	Sum of GTIs [s]
ontime6	20066.300154328	Sum of GTIs [s]
ontime7	20066.300154328	Sum of GTIs [s]
l2events	189334	Number of level 2 events



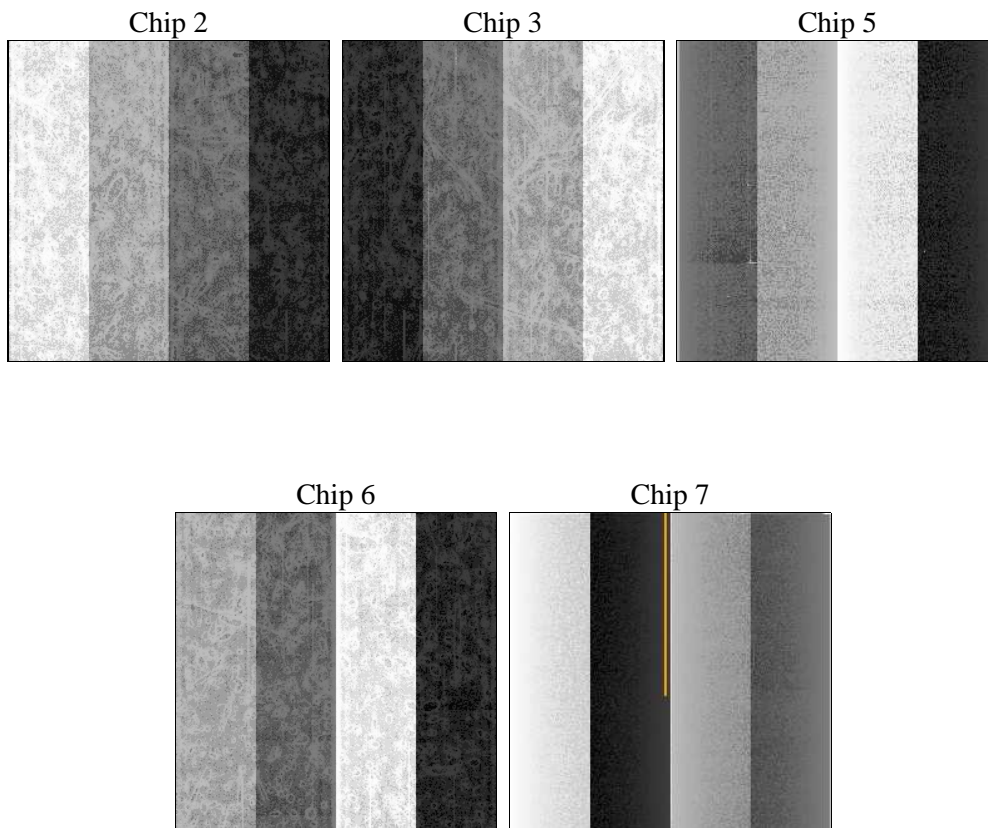
2 OBI

2.1 OBI

2.1.1 Images



2.1.2 Bias



2.1.3 Parameters

obi_num	0	Obi number	sched_exp_time	20000.000000	[s] Scheduled observation exposure time
ascdsver	8.4.5	Processing system revision	ontime	20066.300154328	Sum of GTIs [s]
caldbver	4.4.10	 	ontime2	20060.018113732	Sum of GTIs [s]
date	2012-06-21T01:19:30	Date and time of file creation	ontime3	20066.300154328	Sum of GTIs [s]
revision	1	Processing version of data	ontime5	20066.300154328	Sum of GTIs [s]
			ontime6	20066.300154328	Sum of GTIs [s]
			ontime7	20066.300154328	Sum of GTIs [s]
			l1events	684499	Number of level 1 events

2.1.4 Events

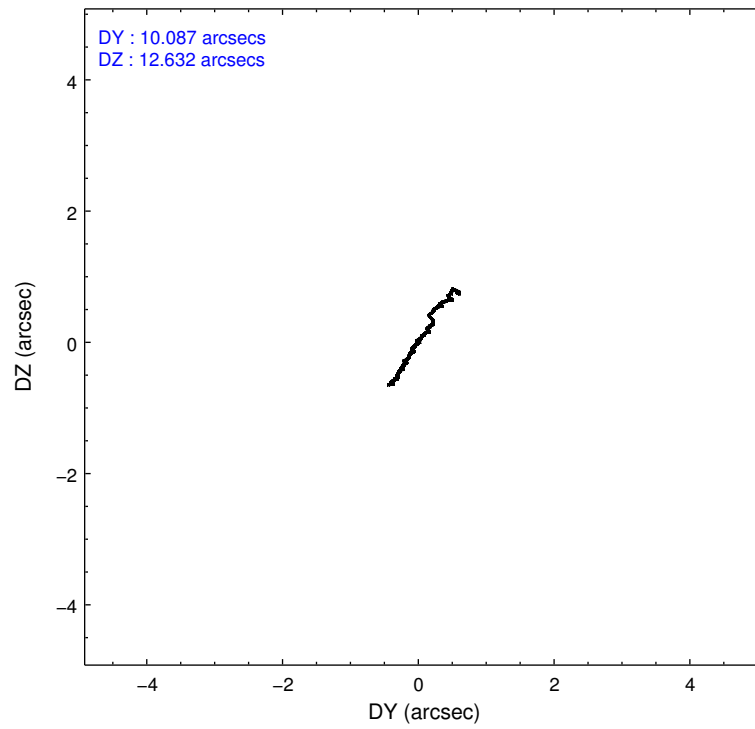
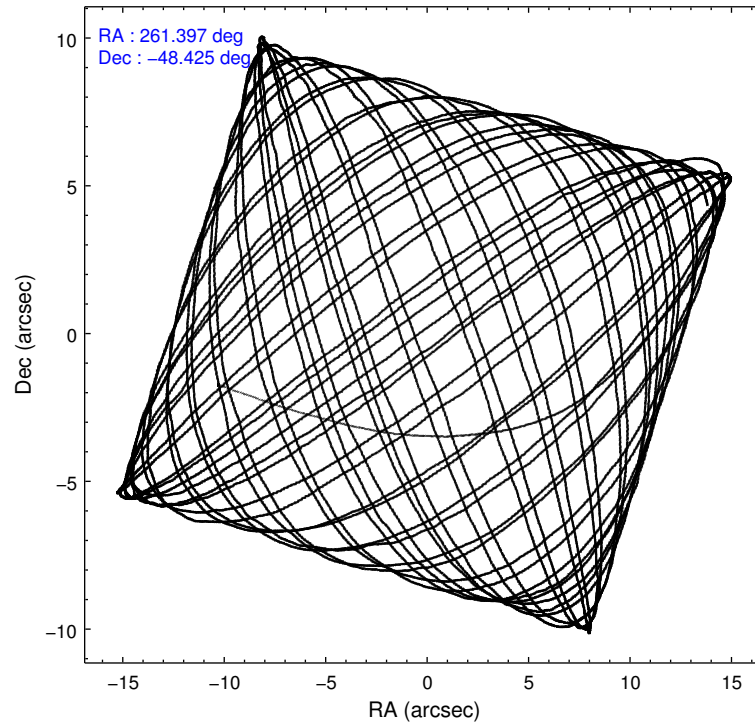
	ccd 2	ccd 3	ccd 5	ccd 6	ccd 7
level 1 events	111182	111454	191763	116101	153999
rejected events	97572	98279	96654	101477	85205
rejected %	87%	88%	50%	87%	55%

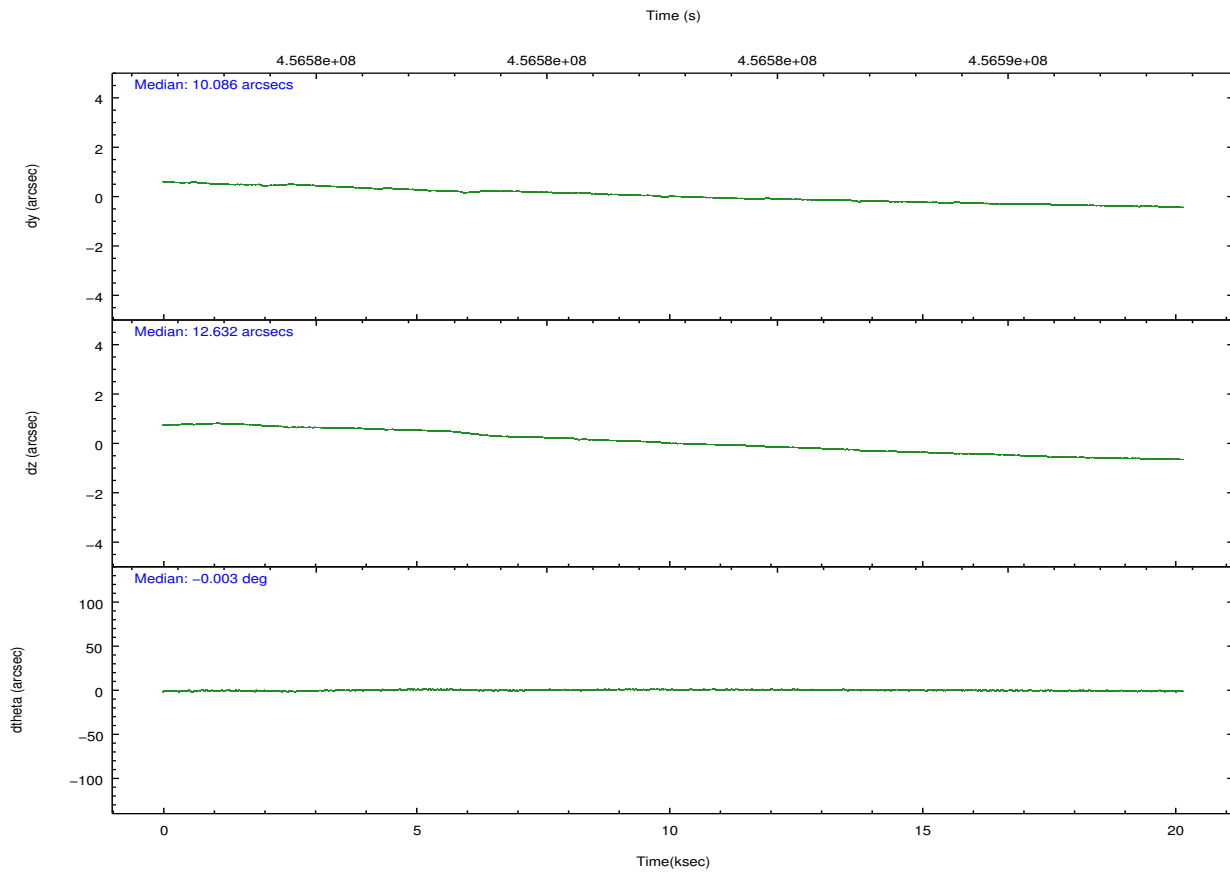
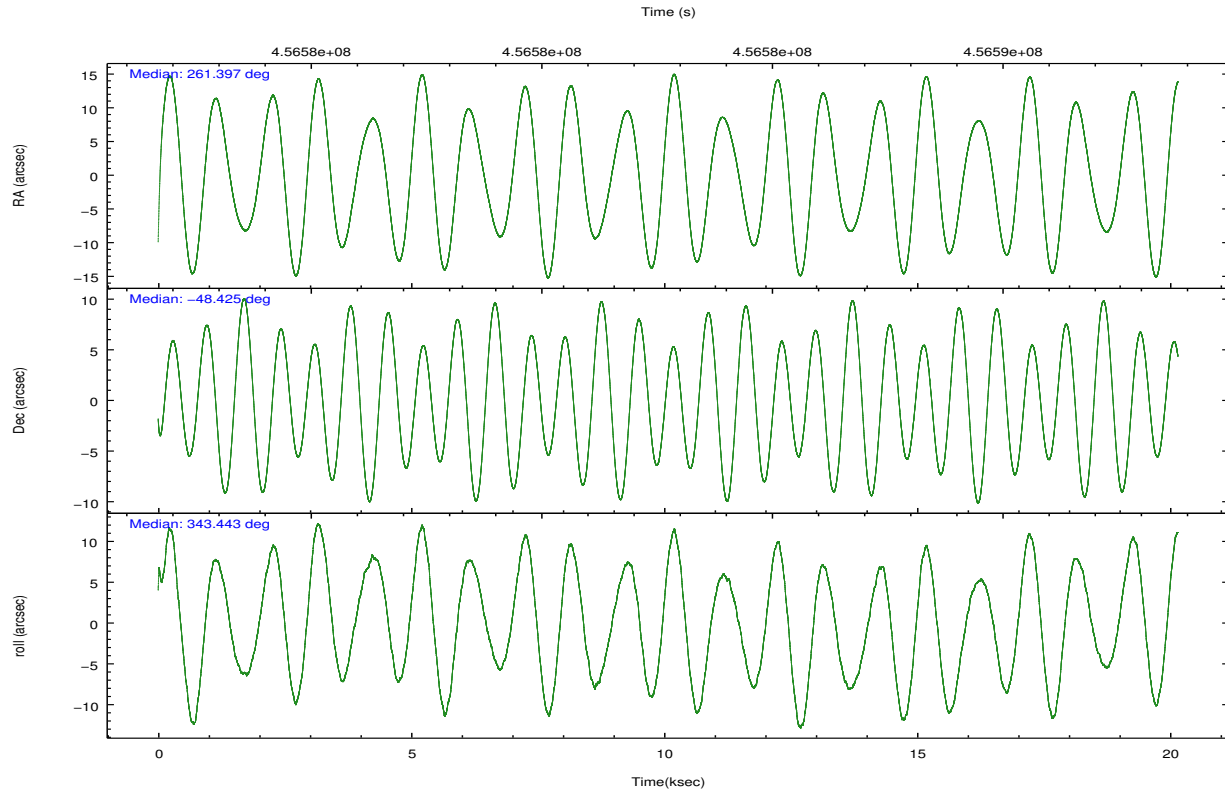
	ccd 2	ccd 3	ccd 5	ccd 6	ccd 7
grade 0 events	5174	4999	10607	5619	6567
	4%	4%	5%	4%	4%
grade 1 events	60	65	334	65	190
	0%	0%	0%	0%	0%
grade 2 events	3129	2883	29537	3202	14271
	2%	2%	15%	2%	9%
grade 3 events	1435	1386	3565	1390	5964
	1%	1%	1%	1%	3%
grade 4 events	1346	1368	3298	1350	6027
	1%	1%	1%	1%	3%
grade 5 events	4838	5780	14905	5764	15682
	4%	5%	7%	4%	10%
grade 6 events	2526	2540	48115	3066	35982
	2%	2%	25%	2%	23%
grade 7 events	92674	92433	81402	95645	69316
	83%	82%	42%	82%	45%

2.2 Compared Parameters

Parameter	Planned	Actual	Parameter	Planned	Actual
Instrument	ACIS	ACIS	Obspar format version number	7	7
Detector	ACIS-23567	ACIS-23567	Obspar file type	PREDICTED	ACTUAL
Grating	NONE	NONE	Obspar update status	NONE	UPDATED
Data mode	VFAINT	VFAINT	CCD I0 on	N	N
Observation mode	POINTING	POINTING	CCD I1 on	N	N
[deg] Pointing RA	261.357605	261.3975644674625	CCD I2 on	O1	Y
[deg] Pointing Dec	-48.431453	-48.42471954205307	CCD I3 on	O2	Y
[deg] Pointing Roll	343.266096	343.4526345676121	CCD S0 on	N	N
[mm] SIM focus pos	-0.684267	-0.6828225247311905	CCD S1 on	Y	Y
[mm] SIM defocus	0	0.001444936568705701	CCD S2 on	Y	Y
[mm] SIM translation stage pos	-190.132523	-190.1425803651734	CCD S3 on	Y	Y
[mm] SIM translation stage offset	0	0.01005778216563158	CCD S4 on	N	N
[s] Observation start time (MET)	456572813.184000	456571534.43994	CCD S5 on	N	N
Observation start date	2012-06-20T09:45:47	2012-06-20T09:25:34	Number of optional ACIS chips dropped	0	0
[s] Observation end time (MET)	456592813.184000	456593519.15361	On-chip summing requested	N	N
Observation end date	2012-06-20T15:19:07	2012-06-20T15:31:59	Subarray requested	NONE	NONE
Read mode	TIMED	TIMED	Alternating exposures requested	N	N
			[s] Primary exposure time	0.000000	3.1

2.3 Aspect





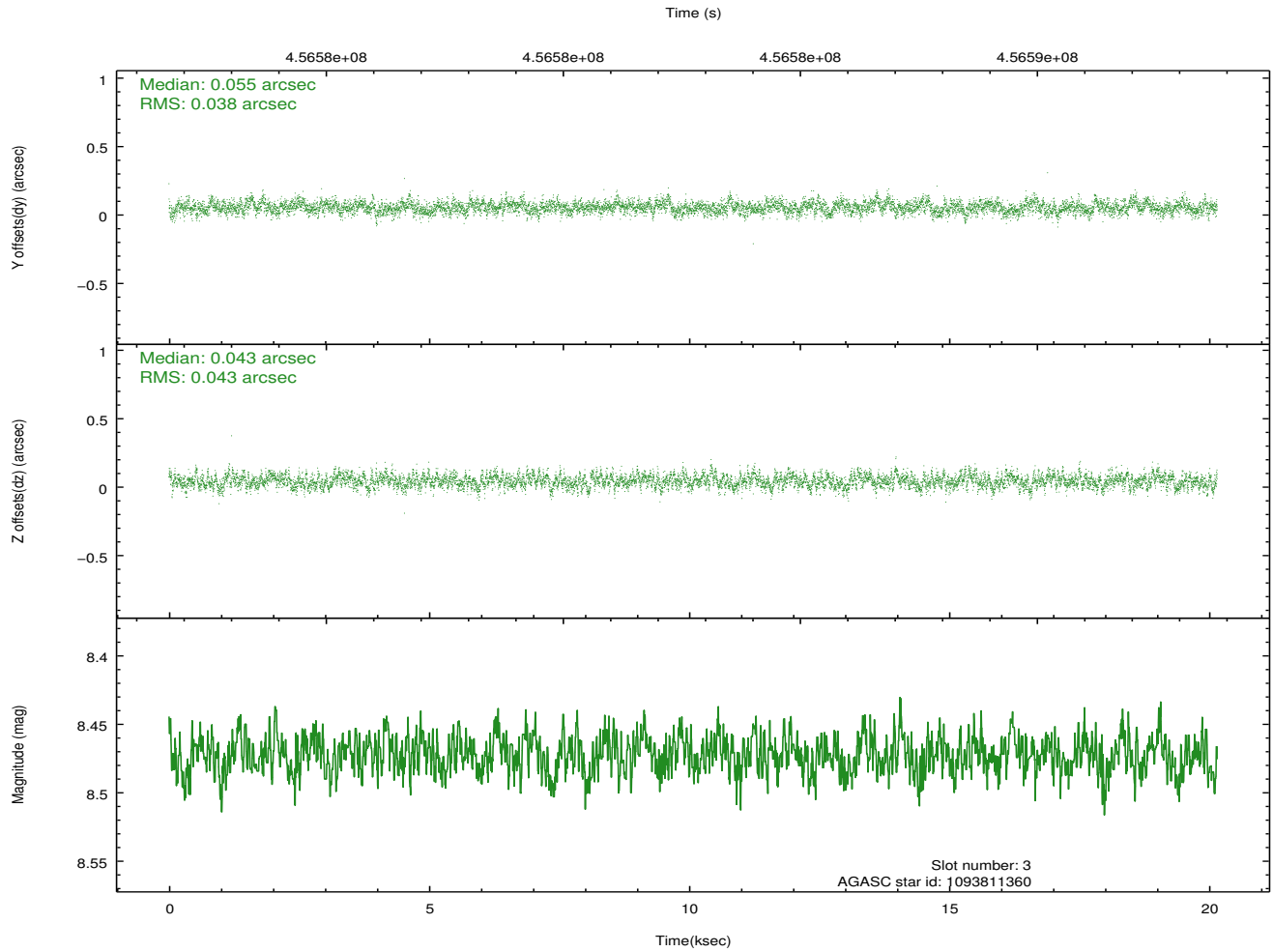
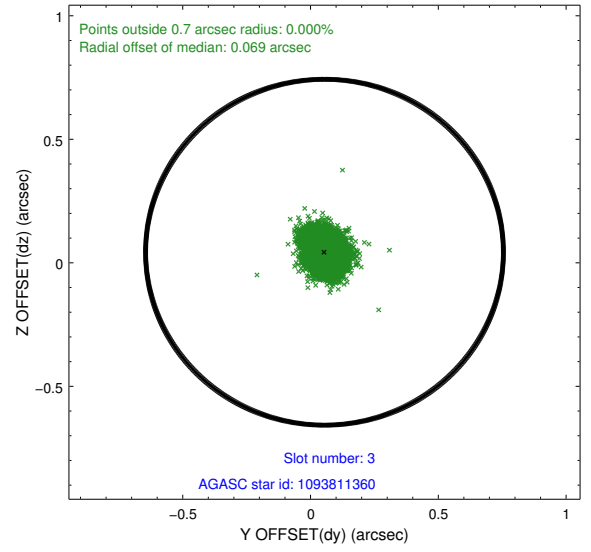
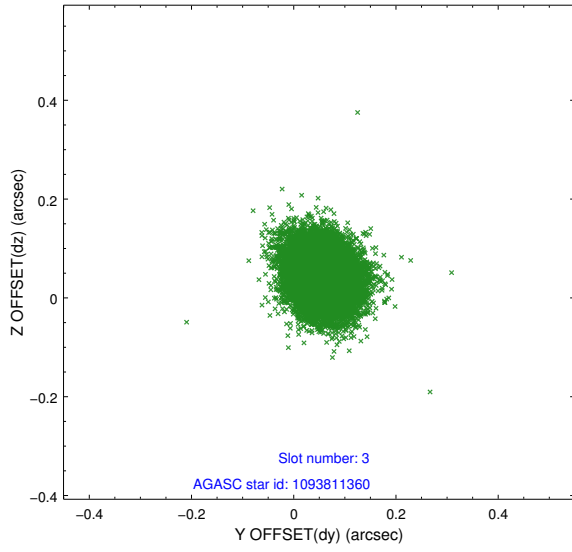
Slot Statistics

slot	status	id	mag	n_pts	med_dy	med_dz	dr1	dr2	ra	dec	mean_y	mean_z
0	FID	ACIS-S-2	6.96	4916	-0.060	-0.056	0.015	0.023	0.000000	0.000000	-763.05	-1733.99
1	FID	ACIS-S-4	7.05	4916	0.221	0.043	0.008	0.012	0.000000	0.000000	2150.46	174.34
2	FID	ACIS-S-5	7.07	4915	-0.192	0.021	0.011	0.018	0.000000	0.000000	-1815.75	168.27
3	GUIDE	1093811360	8.47	9832	0.055	0.043	0.061	0.098	261.542730	-48.735100	736.34	-920.65
4	GUIDE	1093931560	7.22	9832	0.041	0.038	0.062	0.100	261.593559	-48.614895	729.25	-471.58
5	GUIDE	1093933608	7.71	9832	-0.040	-0.105	0.061	0.091	261.922814	-48.161574	1021.56	1316.19
6	GUIDE	1094460008	8.41	9758	-0.002	0.003	0.062	0.101	261.583758	-48.834218	931.59	-1235.21
7	GUIDE	1093808744	7.86	9832	-0.057	0.018	0.052	0.083	261.023010	-48.703661	-478.10	-1169.20

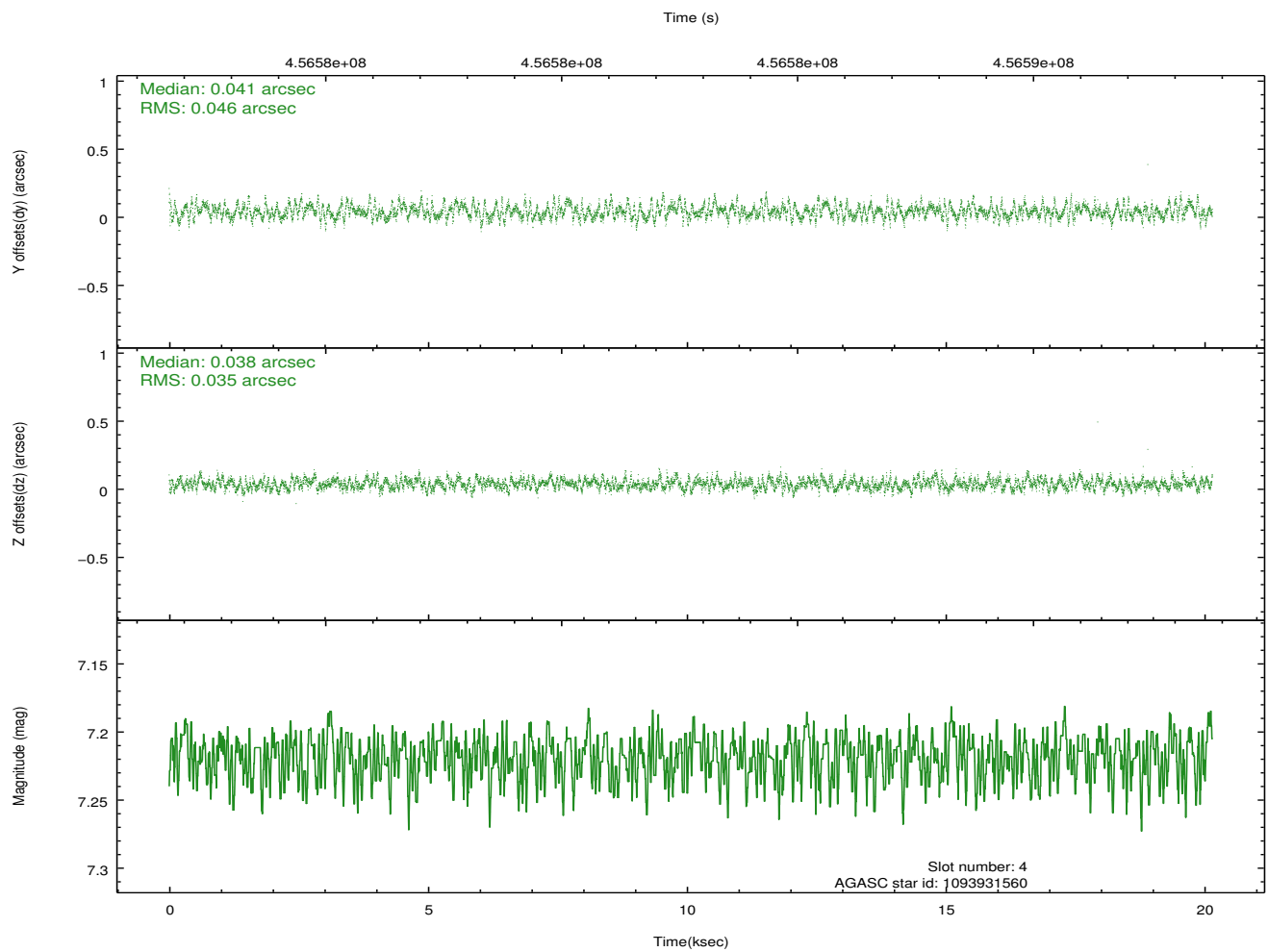
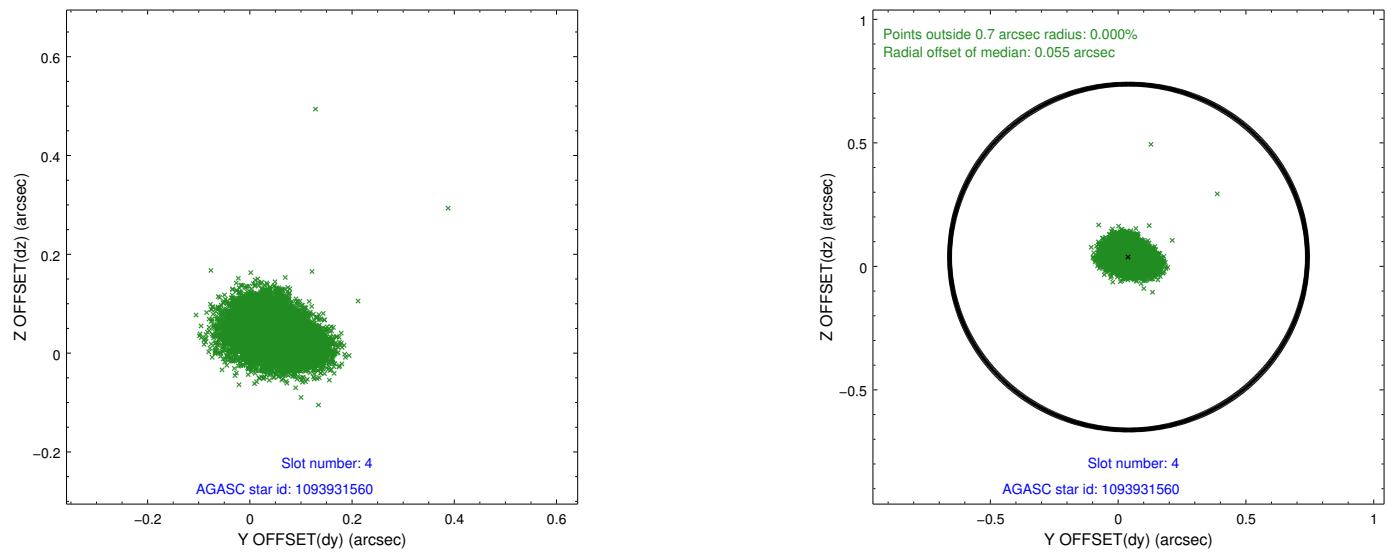
∞

2.4 Star Slots

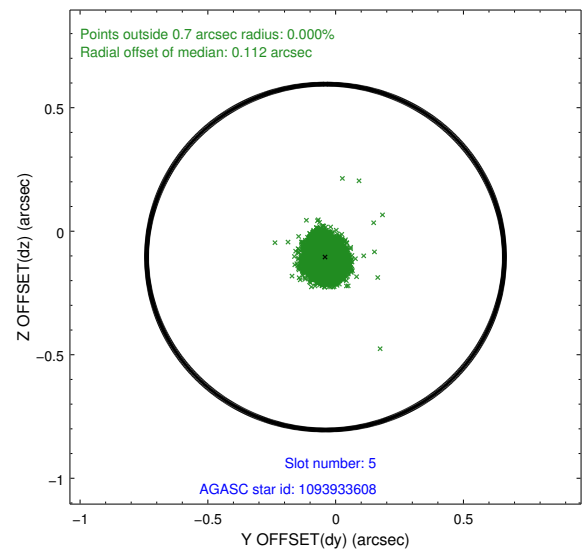
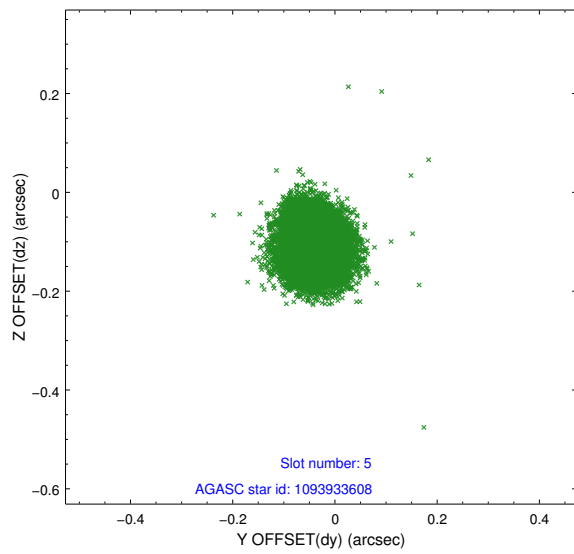
2.4.1 Slot 3



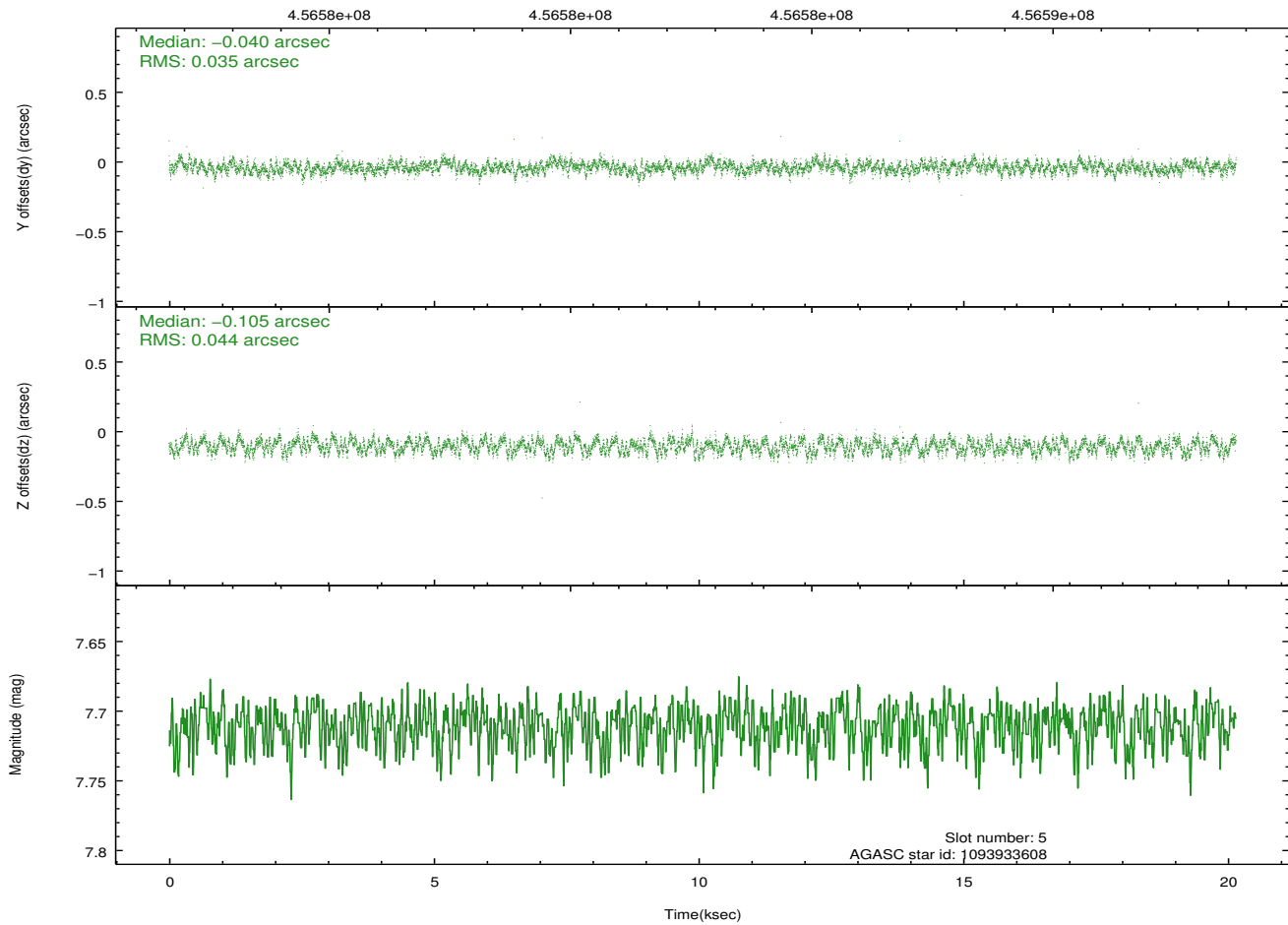
2.4.2 Slot 4



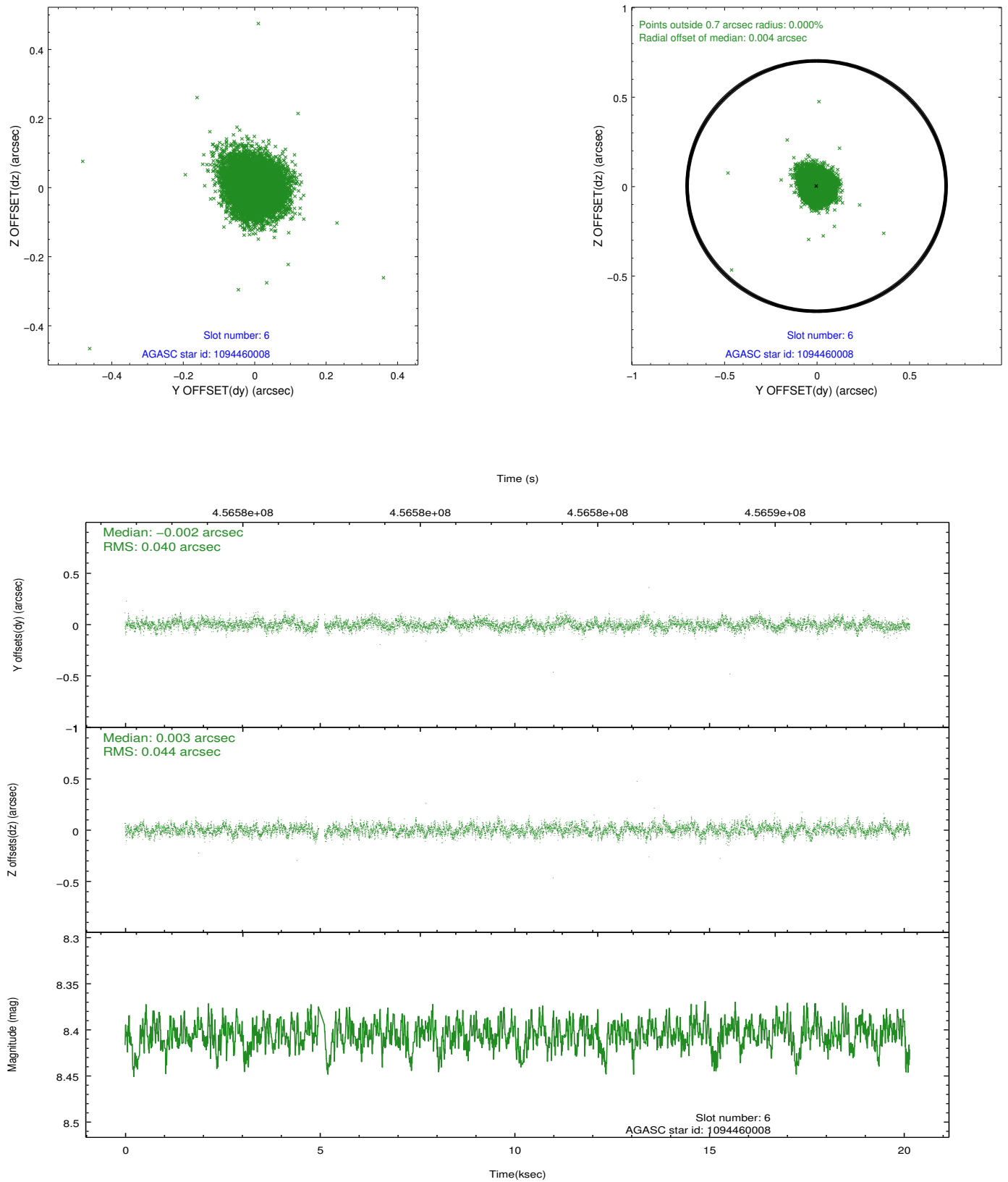
2.4.3 Slot 5



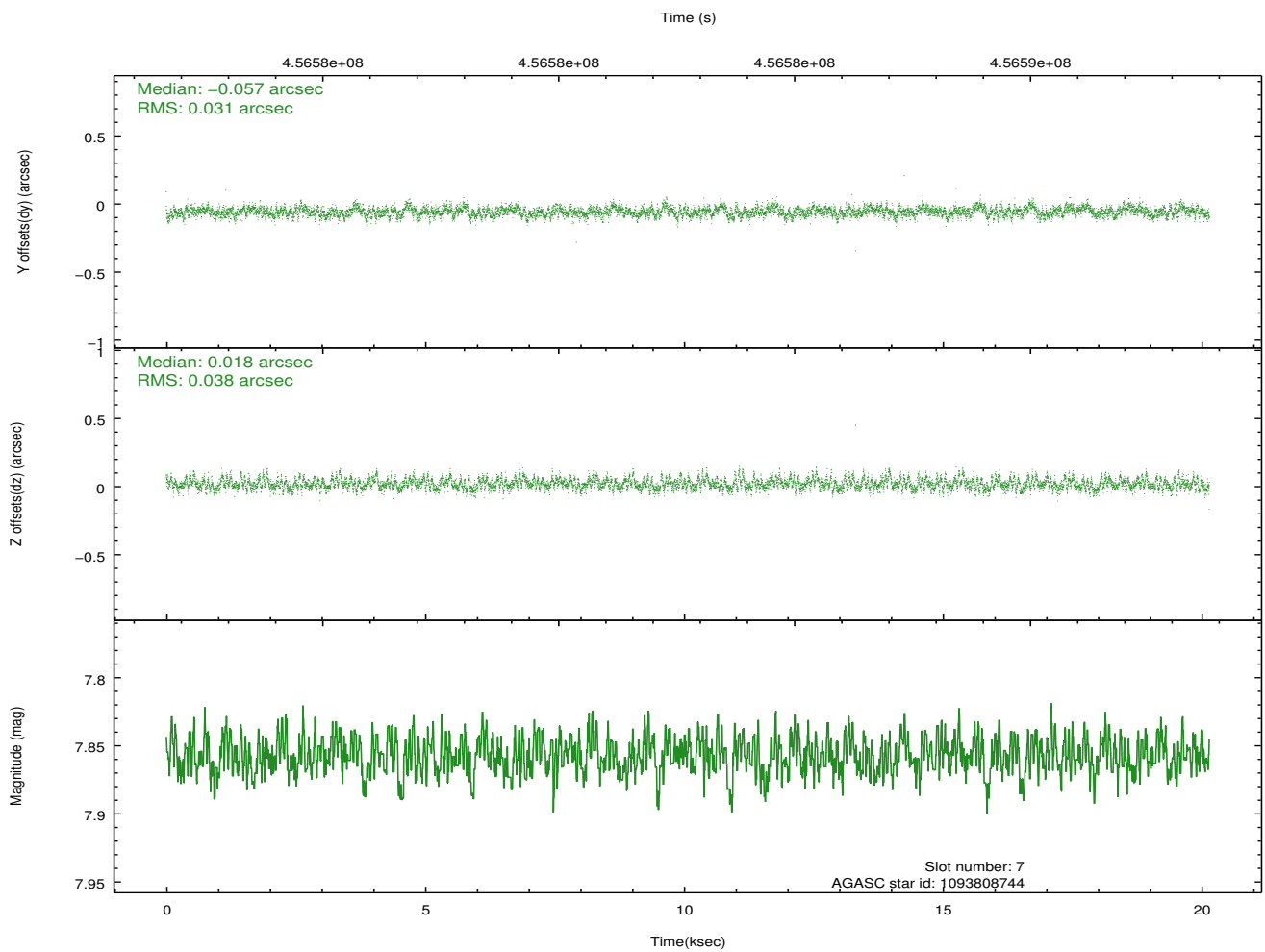
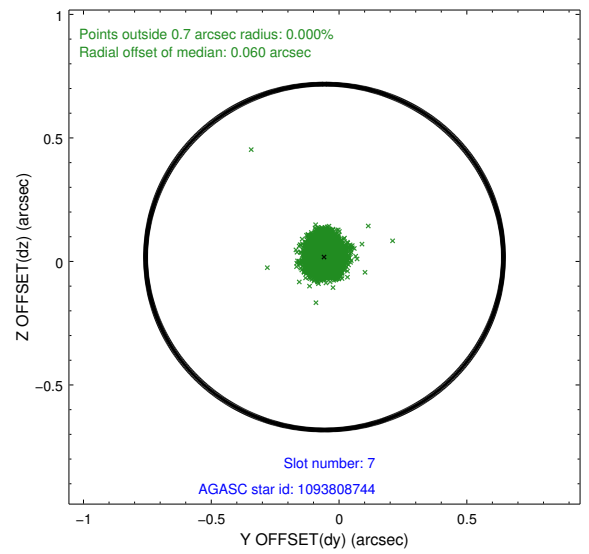
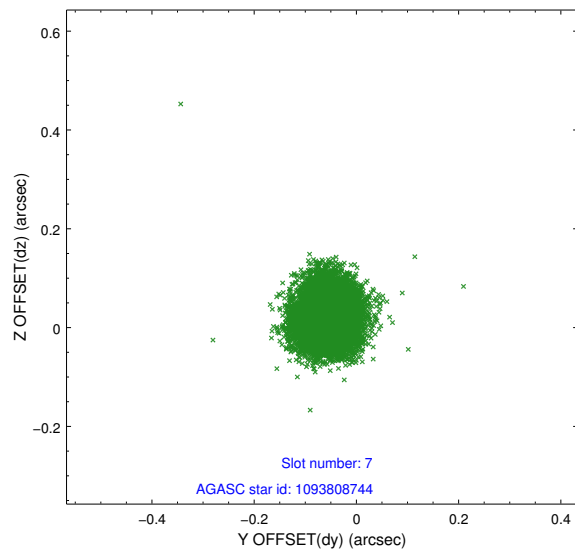
Time (s)



2.4.4 Slot 6

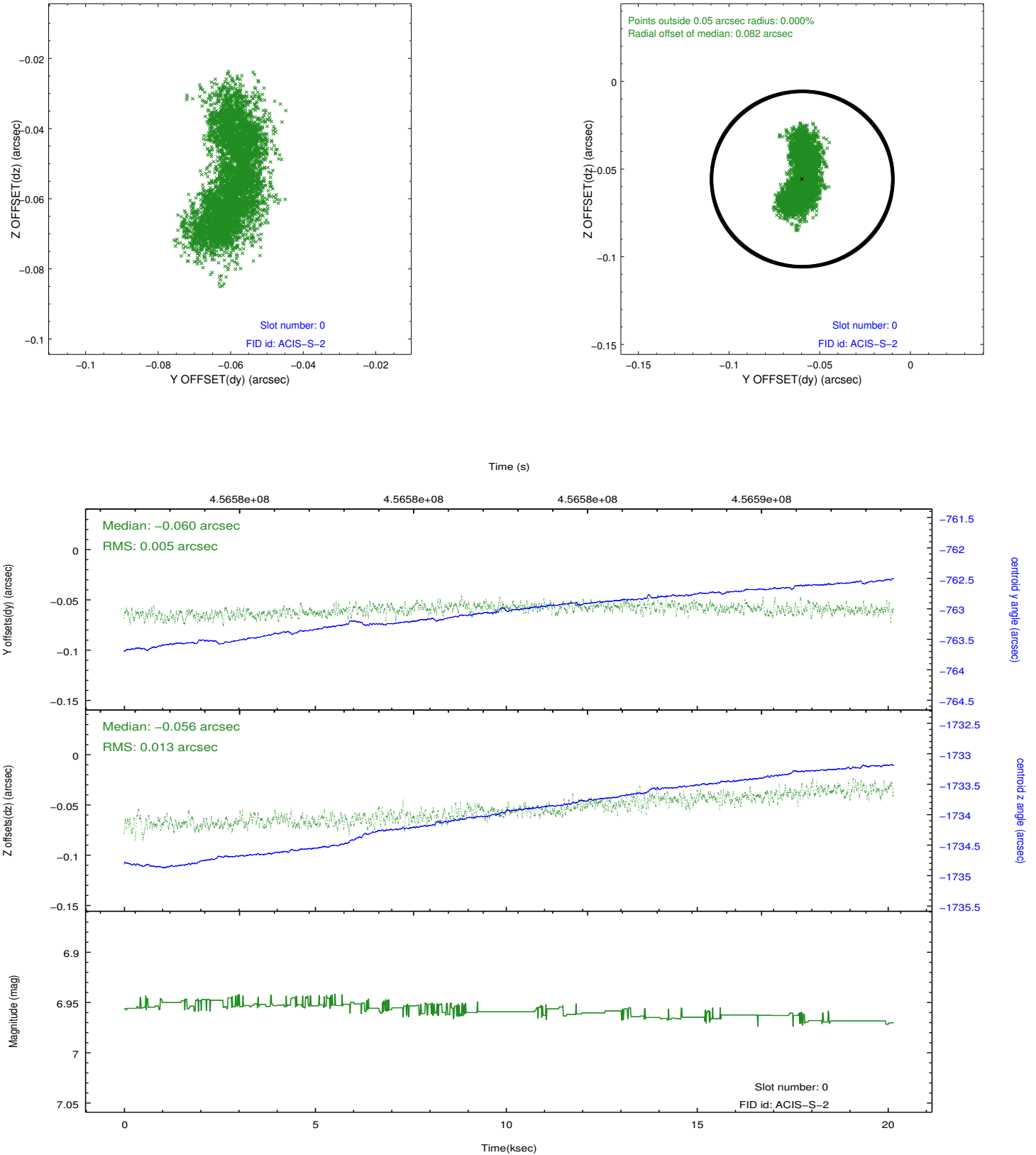


2.4.5 Slot 7

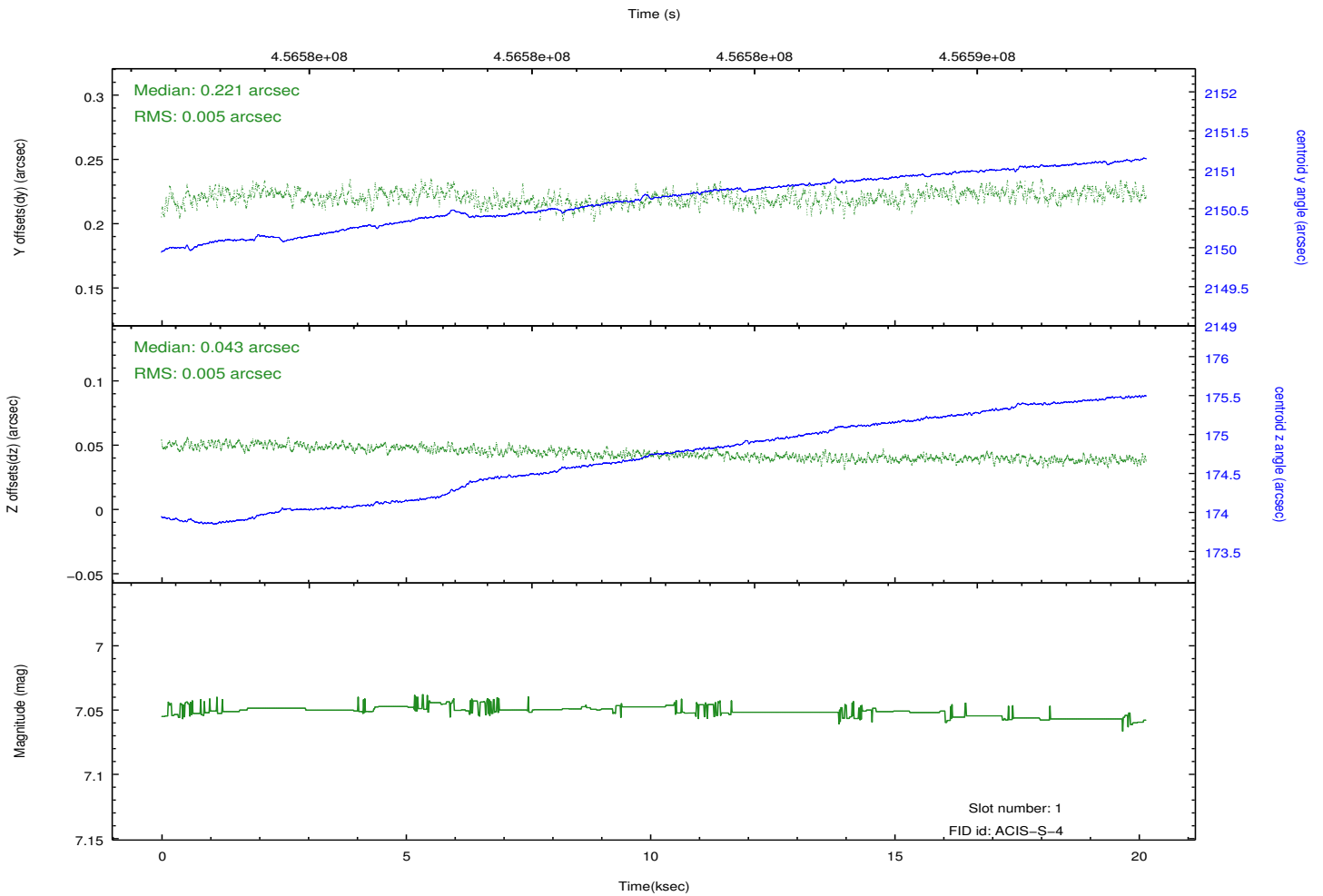
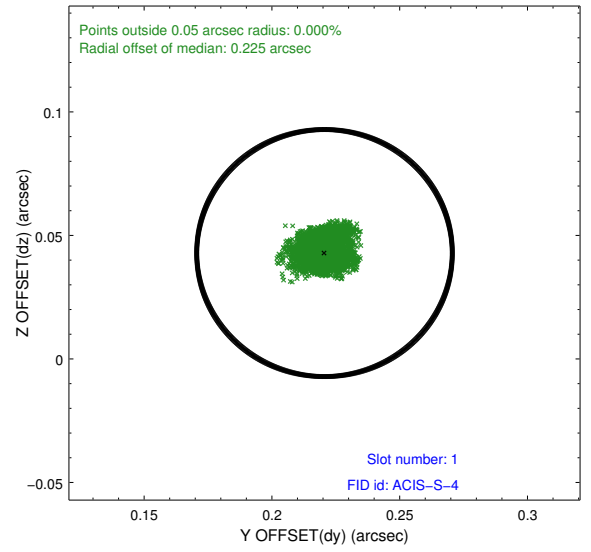
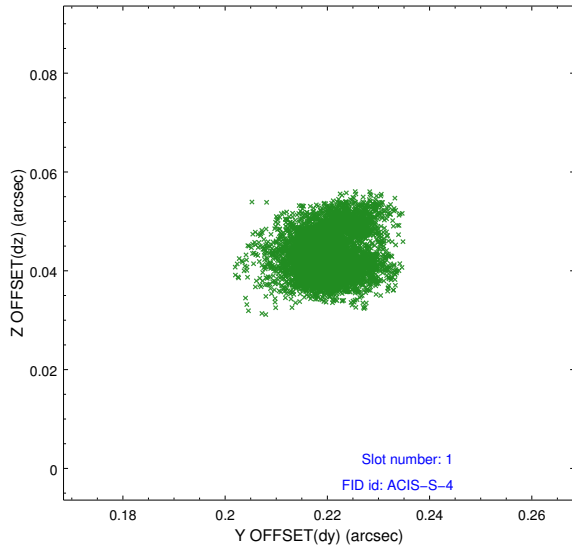


2.5 FID Slots

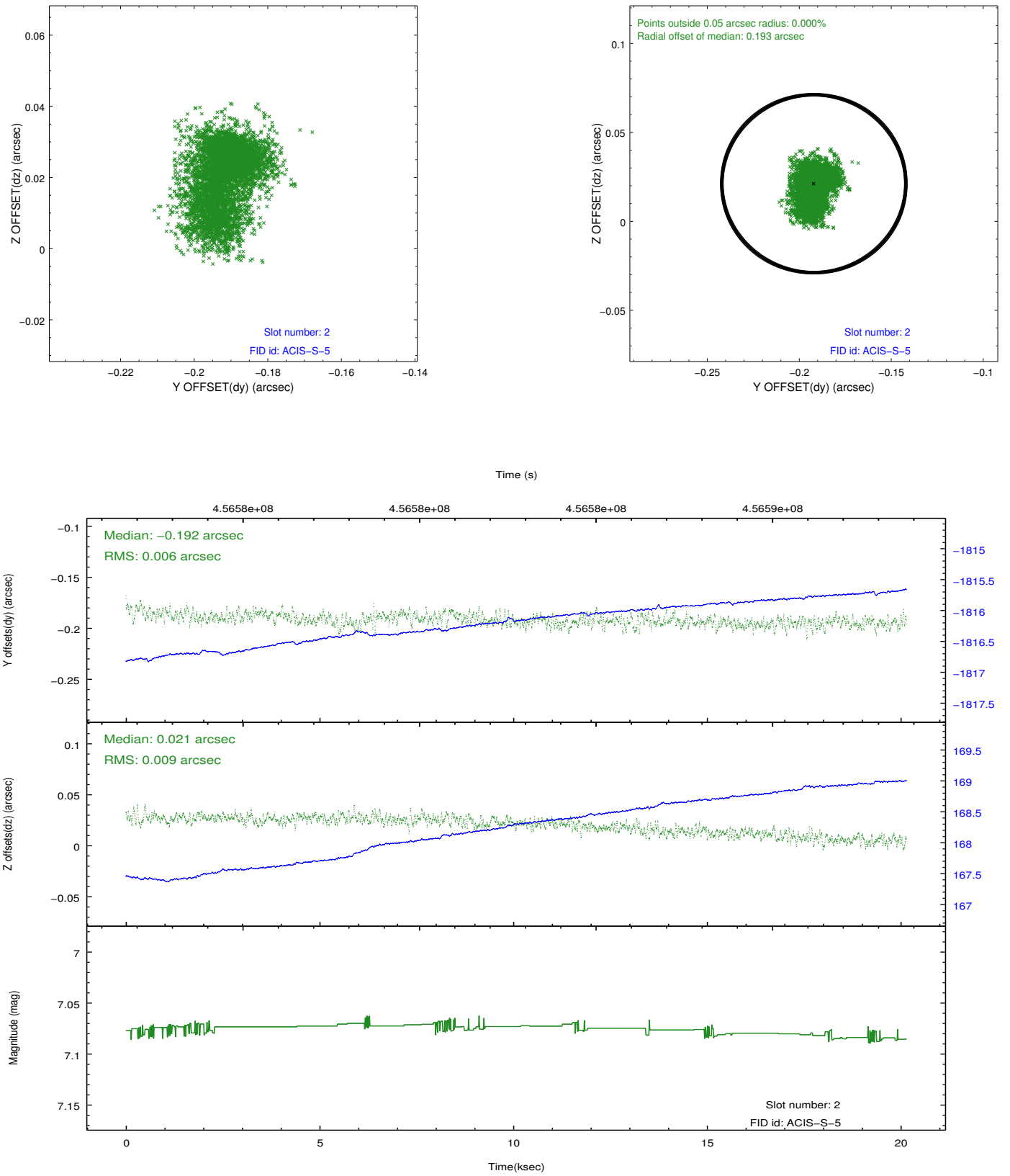
2.5.1 Slot 0



2.5.2 Slot 1



2.5.3 Slot 2



A Summary

A.1 Status

V&V Scientist	Joy Nichols
V&V Date (YYYY-MM-DD)	2012.06.21
V&V Edition	1
V&V Disposition and Status	OK
V&V Charge Time	20.066300154328

A.2 Comments

Joint proposal with HST.