

V&V Reference Report

L2 ASCDS Version : 8.5.1.1

Observation 13734 - L2 Version 2
Chandra X-Ray Center

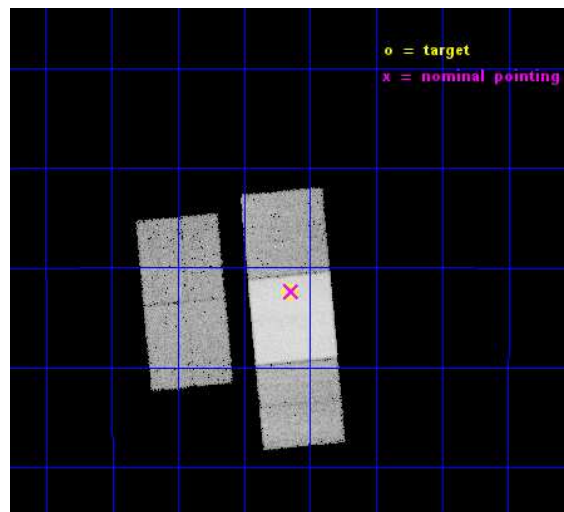
L2 Processing Date : Dec 1 2014

Contents

1	Front	2
2	OBI	3
2.1	OBI	3
2.1.1	Images	3
2.1.2	Bias	3
2.1.3	Parameters	4
2.1.4	Events	4
2.2	Compared Parameters	5
2.3	Aspect	6
2.4	Star Slots	9
2.4.1	Slot 3	9
2.4.2	Slot 4	10
2.4.3	Slot 5	11
2.4.4	Slot 6	12
2.4.5	Slot 7	13
2.5	FID Slots	14
2.5.1	Slot 0	14
2.5.2	Slot 1	15
2.5.3	Slot 2	16
A	Summary	17
A.1	Status	17
A.2	Comments	17

1 Front

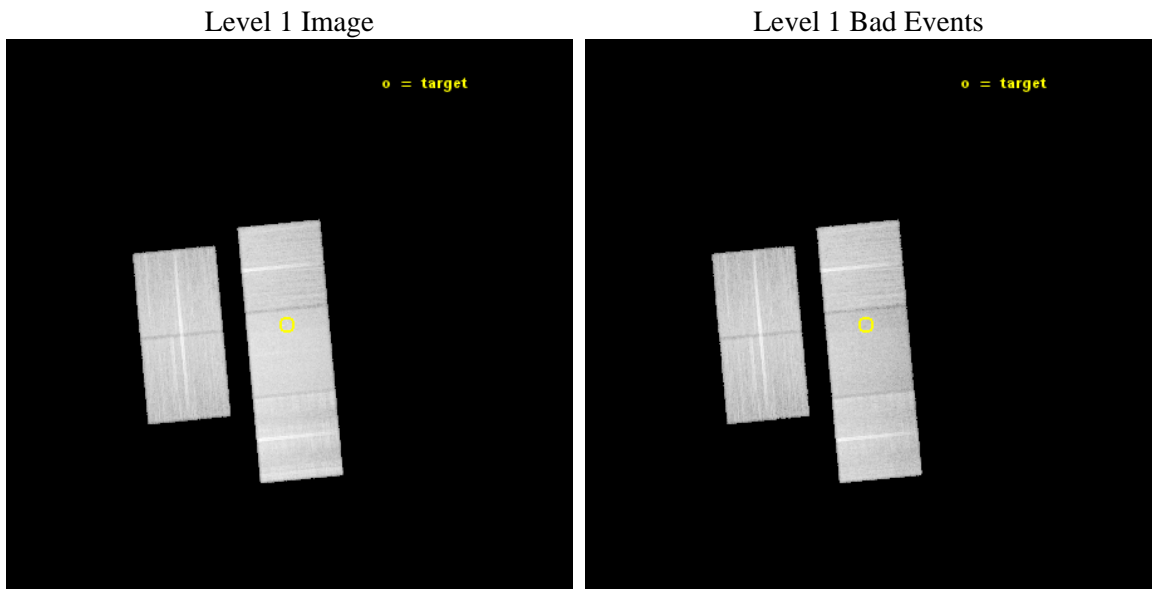
seq_num	401419	Sequence number
obs_id	13734	Observation id
title	Identifying New qLMXBs in Milky Way Globular Cluster Cores	Proposa
observer	Dr. David Morris	Principal investigator
object	NGC6287	Source name
dtycle	0	
cycle	P	events from which exps? Prim/Second/Both
ra_targ	256.287917	Observer's specified target RA [deg]
dec_targ	-22.708361	Observer's specified target Dec [deg]
ra_nom	256.285320115	Nominal RA [deg]
dec_nom	-22.706500651127	Nominal Dec [deg]
roll_nom	84.617429215675	Nominal Roll [deg]
revision	2	Processing version of data
ontime	40523.200311661	Sum of GTIs [s]
livetime	39993.734866843	Livetime [s]
ontime2	40523.200311661	Sum of GTIs [s]
ontime3	40520.059351325	Sum of GTIs [s]
ontime6	40523.200311661	Sum of GTIs [s]
ontime7	40523.200311661	Sum of GTIs [s]
ontime8	40523.200311661	Sum of GTIs [s]
l2events	221174	Number of level 2 events



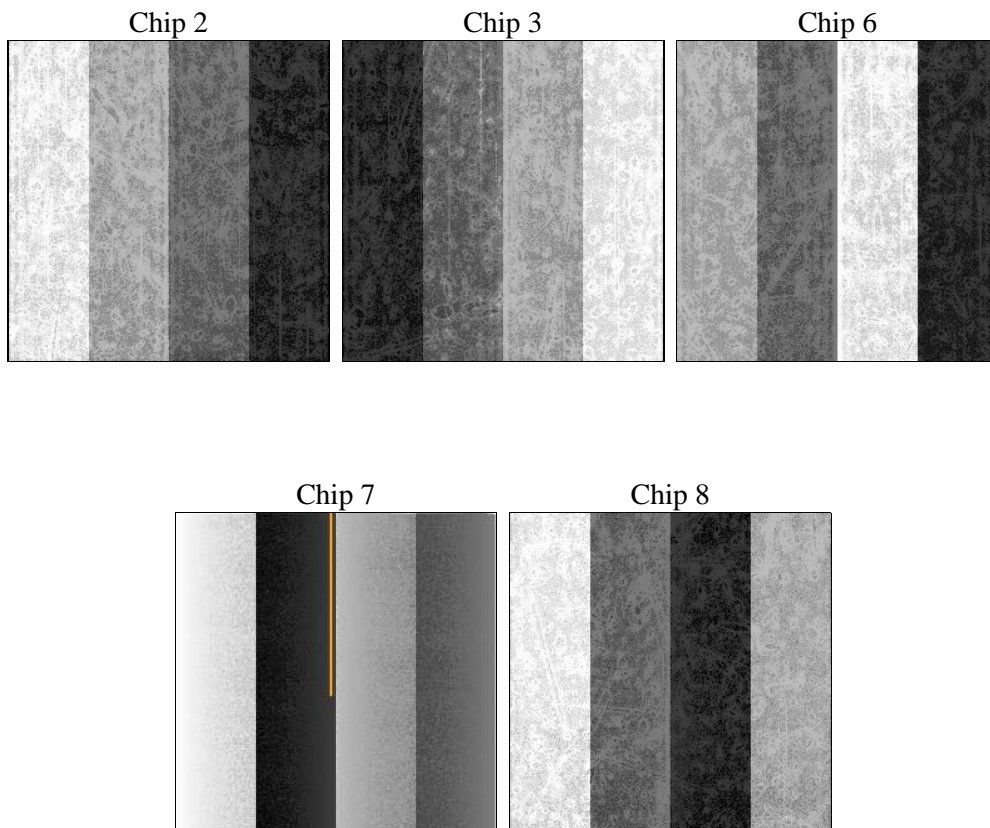
2 OBI

2.1 OBI

2.1.1 Images



2.1.2 Bias



2.1.3 Parameters

obi_num	0	Obi number	sched_exp_time	40455.060000	[s] Scheduled observation exposure time
ascdsver	10.3	Processing system revision	ontime	40523.200311661	Sum of GTIs [s]
caldbver	4.6.4	 	ontime2	40523.200311661	Sum of GTIs [s]
date	2014-12-01T07:04:18	Date and time of file creation	ontime3	40520.059351325	Sum of GTIs [s]
revision	2	Processing version of data	ontime6	40523.200311661	Sum of GTIs [s]
			ontime7	40523.200311661	Sum of GTIs [s]
			ontime8	40523.200311661	Sum of GTIs [s]
			l1events	1259038	Number of level 1 events

2.1.4 Events

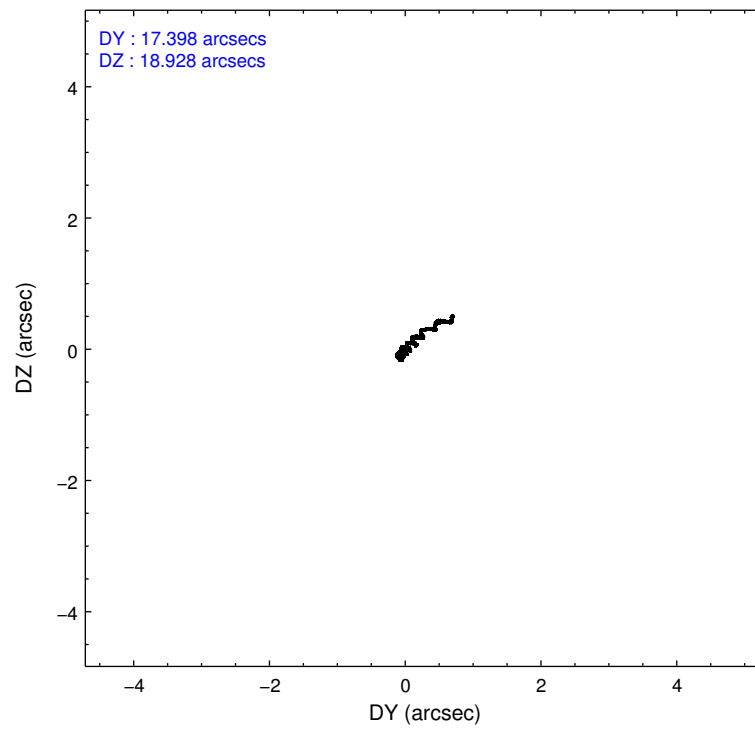
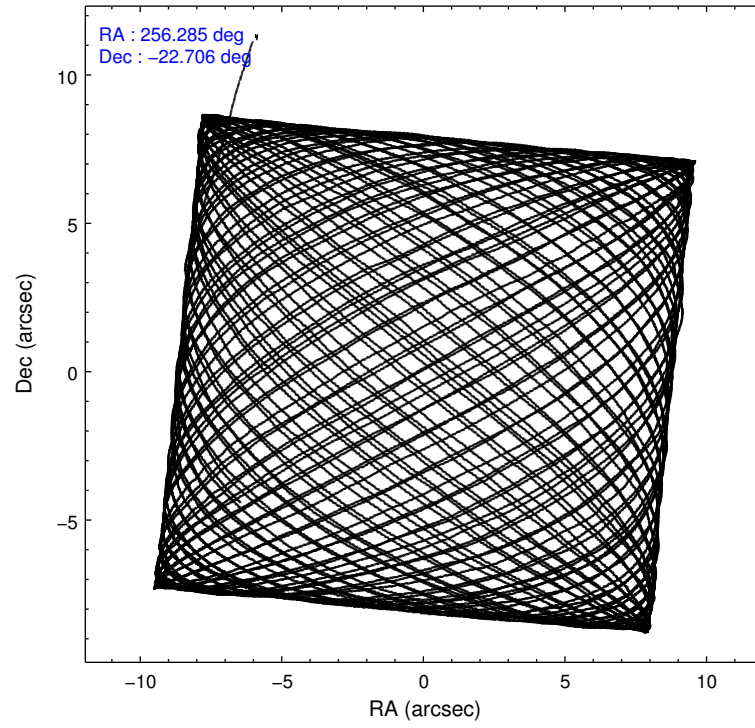
	ccd 2	ccd 3	ccd 6	ccd 7	ccd 8
level 1 events	215638	214437	230433	297973	300557
rejected events	190766	190013	203191	167551	219541
rejected %	88%	88%	88%	56%	73%

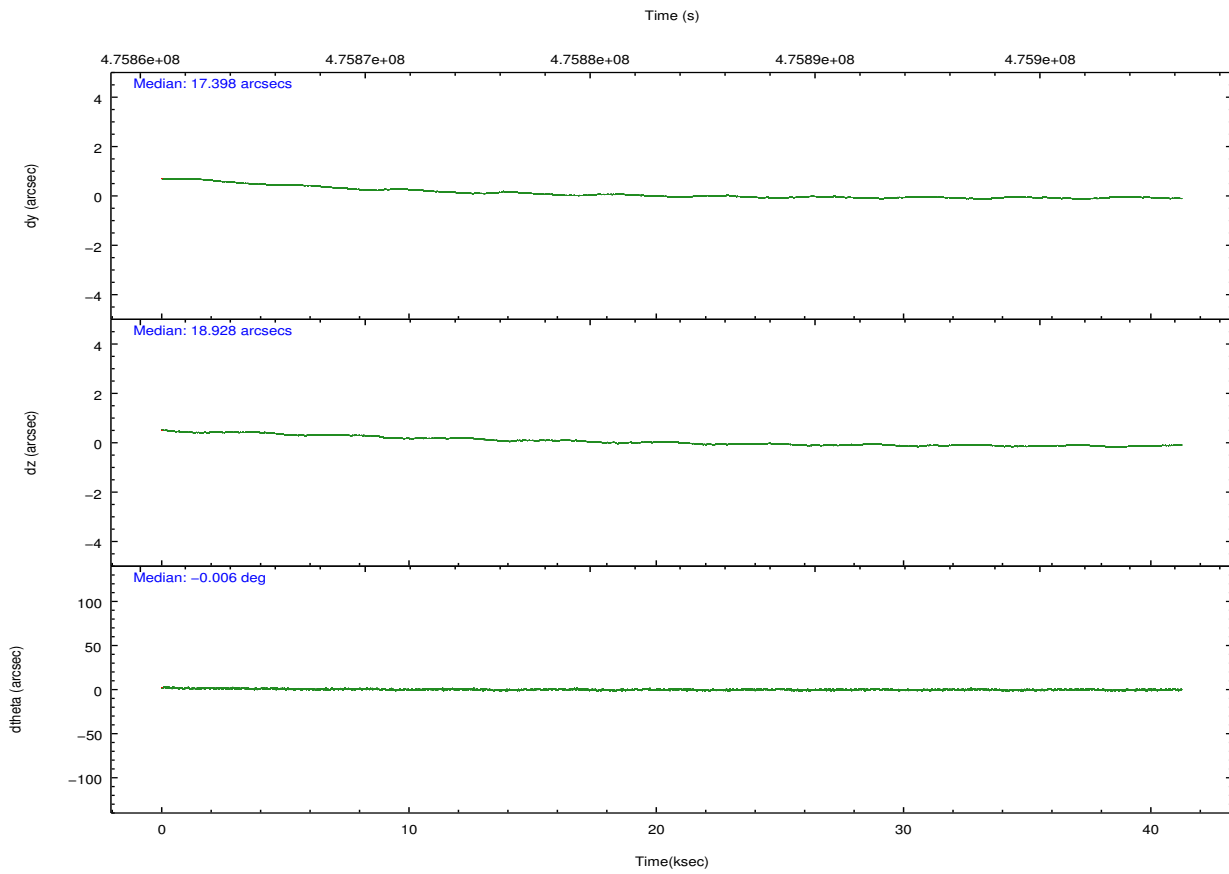
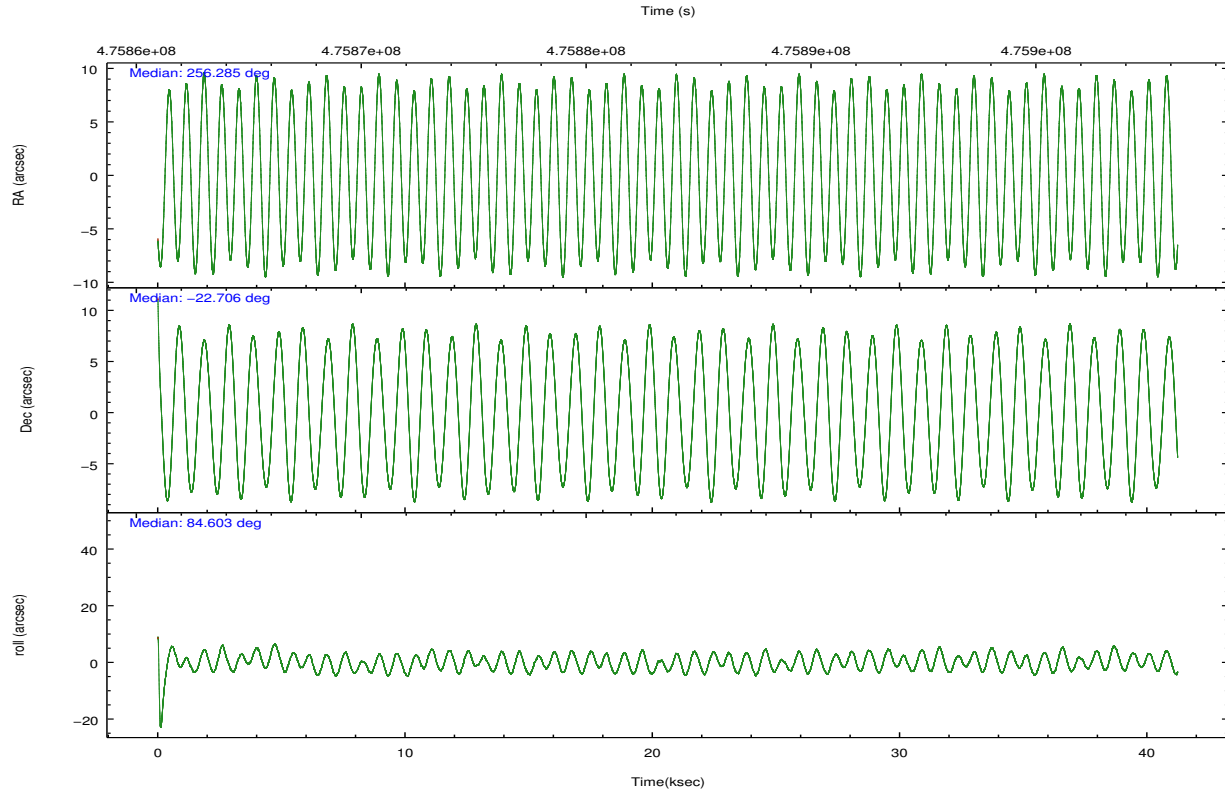
	ccd 2	ccd 3	ccd 6	ccd 7	ccd 8
grade 0 events	8956	8487	9328	11678	24397
	4%	3%	4%	3%	8%
grade 1 events	124	131	120	356	240
	0%	0%	0%	0%	0%
grade 2 events	6006	5495	6188	26867	18612
	2%	2%	2%	9%	6%
grade 3 events	2539	2666	2729	11321	8187
	1%	1%	1%	3%	2%
grade 4 events	2563	2645	2704	11336	7921
	1%	1%	1%	3%	2%
grade 5 events	9063	11495	11496	30939	16580
	4%	5%	4%	10%	5%
grade 6 events	4811	5135	6296	69232	21899
	2%	2%	2%	23%	7%
grade 7 events	181576	178383	191572	136244	202721
	84%	83%	83%	45%	67%

2.2 Compared Parameters

Parameter	Planned	Actual	Parameter	Planned	Actual
Instrument	ACIS	ACIS	Obspar format version number	7	7
Detector	ACIS-23678	ACIS-23678	Obspar file type	PREDICTED	ACTUAL
Grating	NONE	NONE	Obspar update status	NONE	UPDATED
Data mode	FAINT	FAINT	Number of optional ACIS chips dropped	0	0
Observation mode	POINTING	POINTING	On-chip summing requested	N	N
[deg] Pointing RA	256.298038	256.2853201149993	Subarray requested	NONE	NONE
[deg] Pointing Dec	-22.731205	-22.70650065112684	Alternating exposures requested	N	N
[deg] Pointing Roll	84.465706	84.61742921567529	[s] Primary exposure time	0.000000	3.1
[mm] SIM focus pos	-0.684267	-0.6828225247311905			
[mm] SIM defocus	0	0.001444936568705701			
[mm] SIM translation stage pos	-190.132523	-190.1425803651734			
[mm] SIM translation stage offset	0	0.01005778216563158			
[s] Observation start time (MET)	475863799.184000	475862563.34983			
Observation start date	2013-01-29T16:22:12	2013-01-29T16:02:43			
[s] Observation end time (MET)	475904255.184000	475904480.21459			
Observation end date	2013-01-30T03:36:28	2013-01-30T03:41:20			
Read mode	TIMED	TIMED			

2.3 Aspect



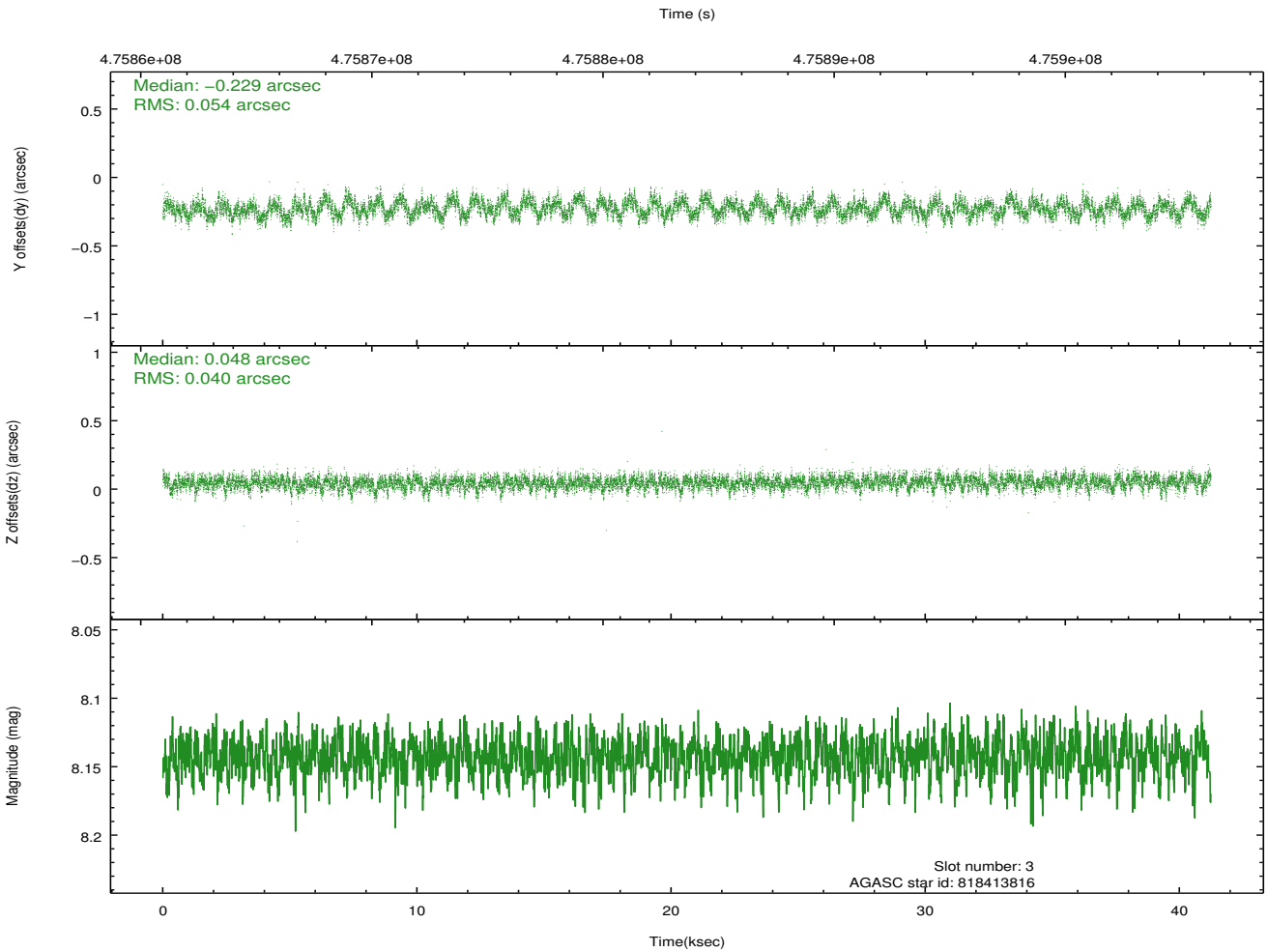
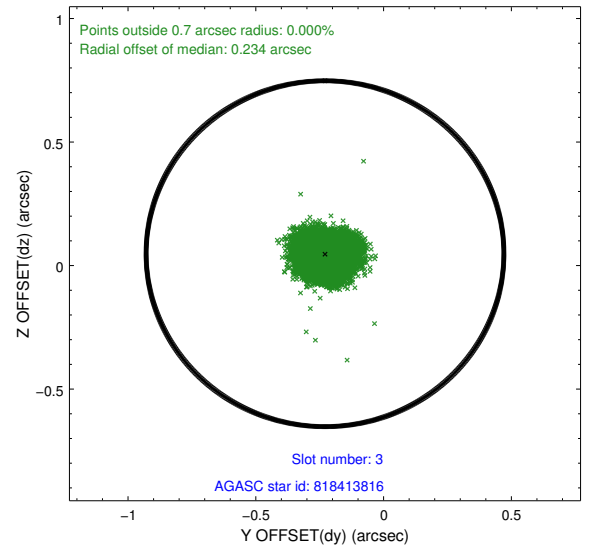
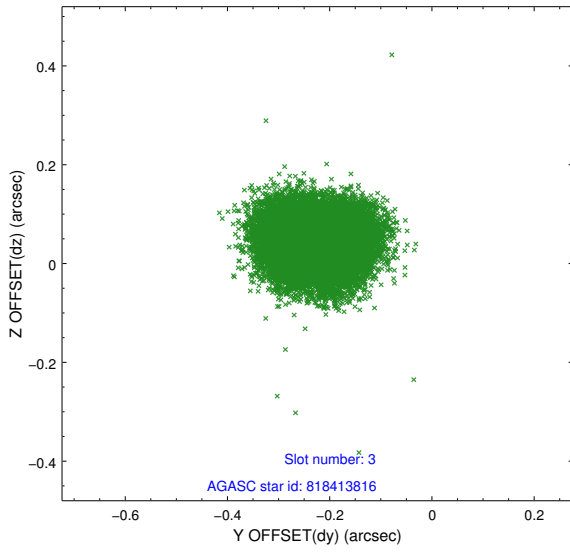


Slot Statistics

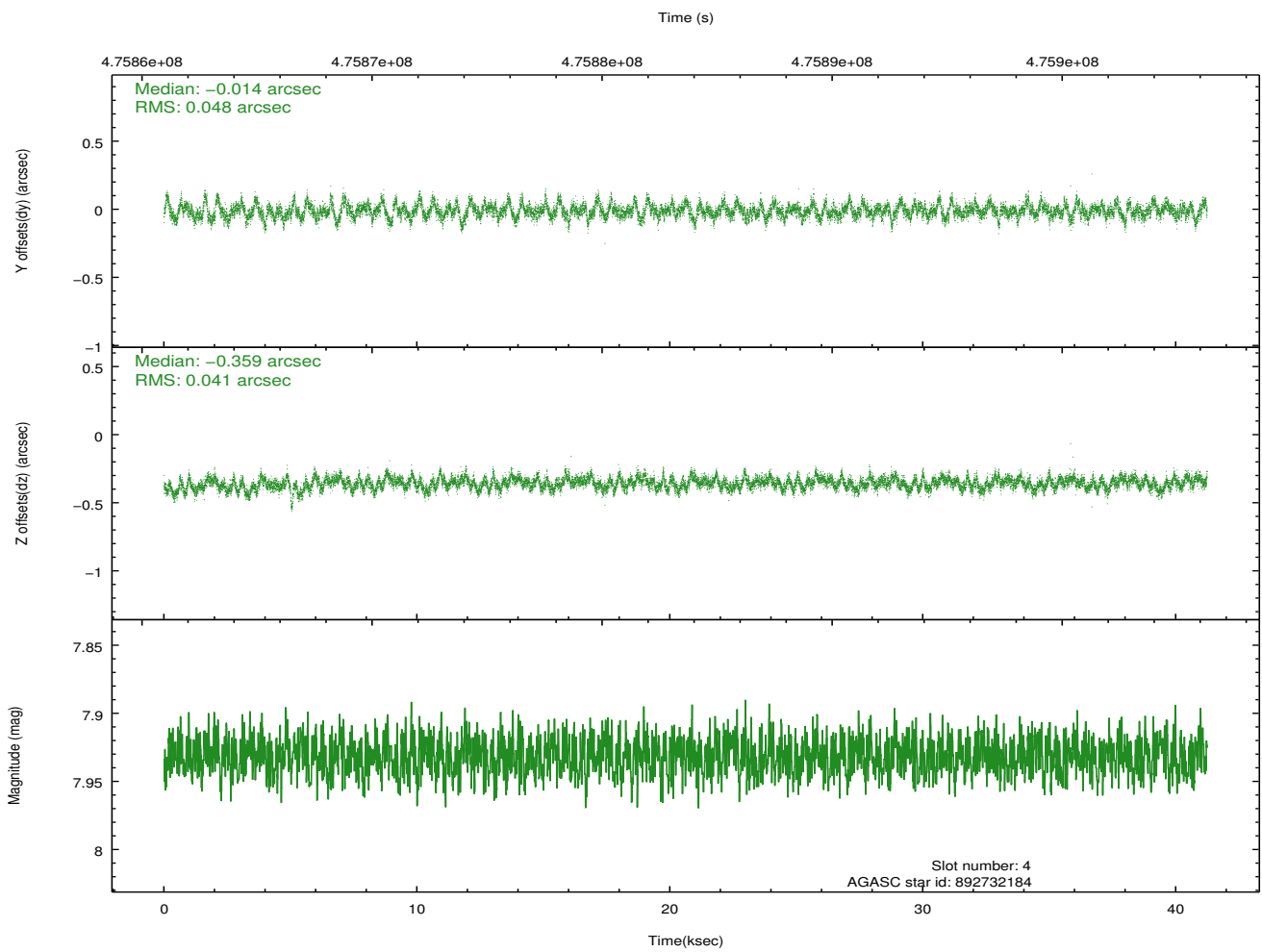
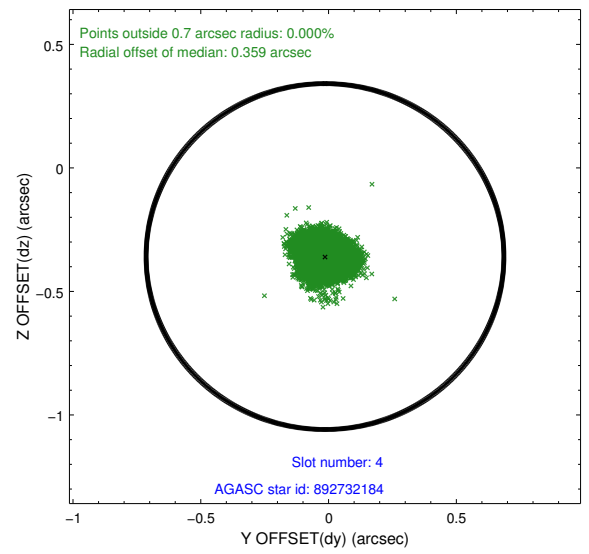
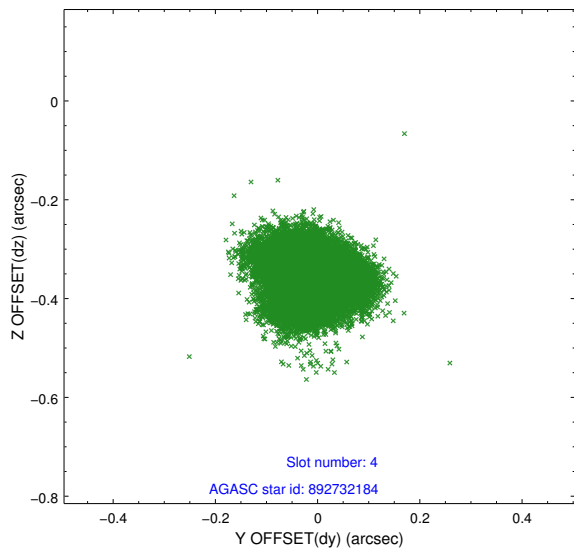
slot	status	used	id	mag	n_pts	med_dy	med_dz	dr1	dr2	ra	dec	mean_y	mean_z
0	FID		ACIS-S-1	7.01	10057	-0.001	0.036	0.009	0.016	0.000000	0.000000	925.50	-1736.01
1	FID		ACIS-S-4	7.01	10059	0.068	-0.040	0.009	0.018	0.000000	0.000000	2142.97	168.07
2	FID		ACIS-S-6	7.14	10058	-0.090	0.014	0.008	0.015	0.000000	0.000000	391.35	805.48
3	GUIDE	used	818413816	8.14	20114	-0.229	0.048	0.072	0.114	256.942894	-22.495300	1047.24	-2052.53
4	GUIDE	used	892732184	7.93	20115	-0.014	-0.359	0.067	0.109	255.982486	-22.880947	-638.75	989.45
5	GUIDE	used	892734656	9.36	20097	0.368	0.279	0.157	0.225	256.376325	-23.351492	-2197.69	-472.42
6	GUIDE	used	892738256	9.86	20096	0.087	0.347	0.250	0.357	256.845144	-23.404739	-2241.95	-2033.17
7	GUIDE	used	892739296	8.19	20069	-0.224	-0.335	0.094	0.166	255.536318	-23.288124	-2245.91	2312.63

2.4 Star Slots

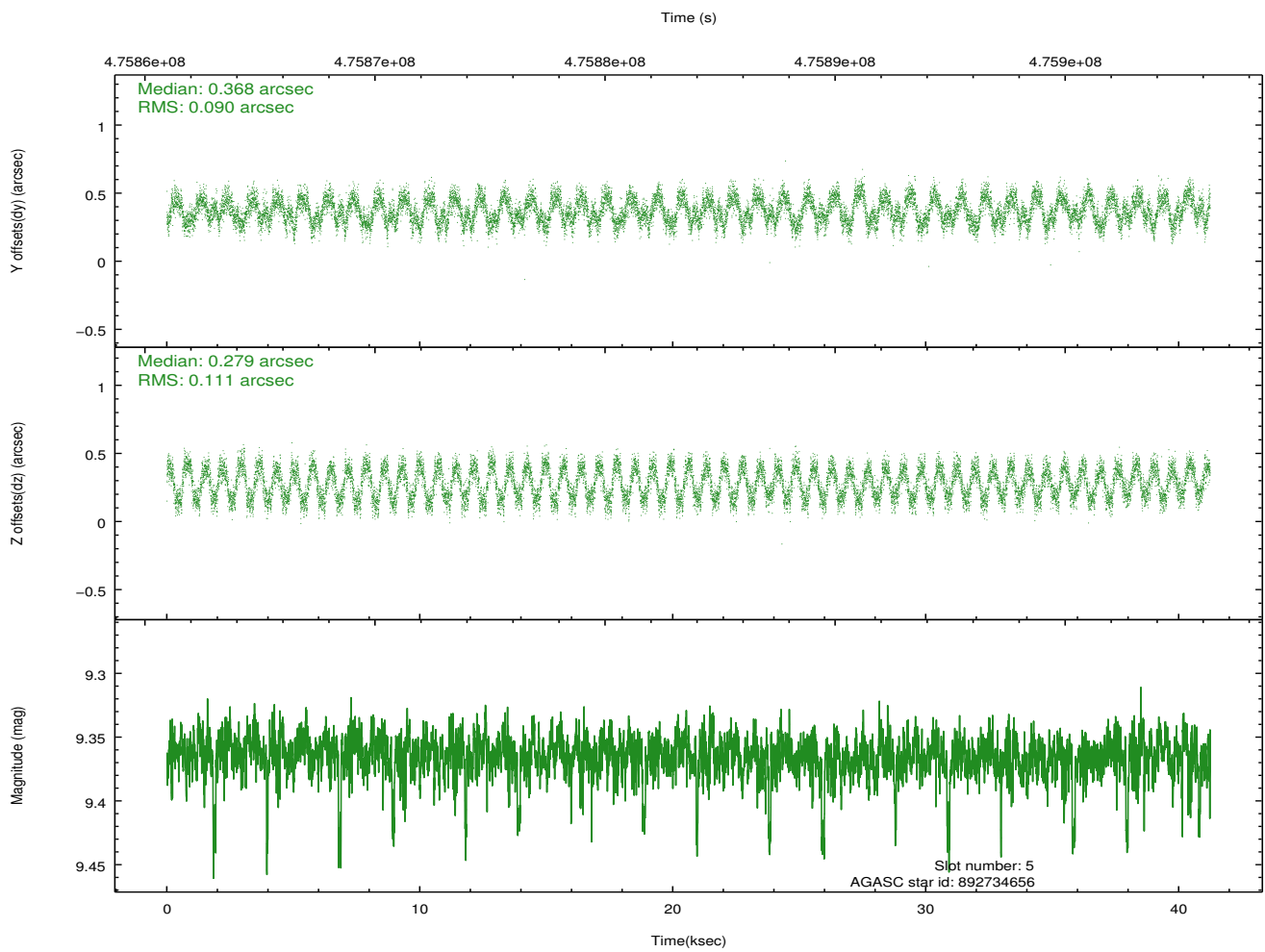
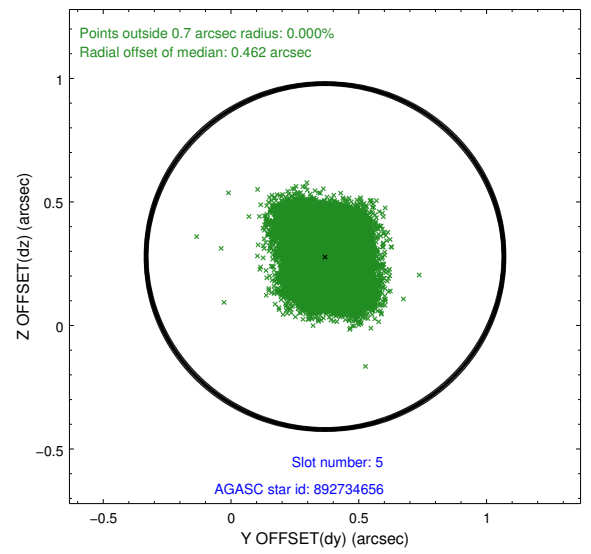
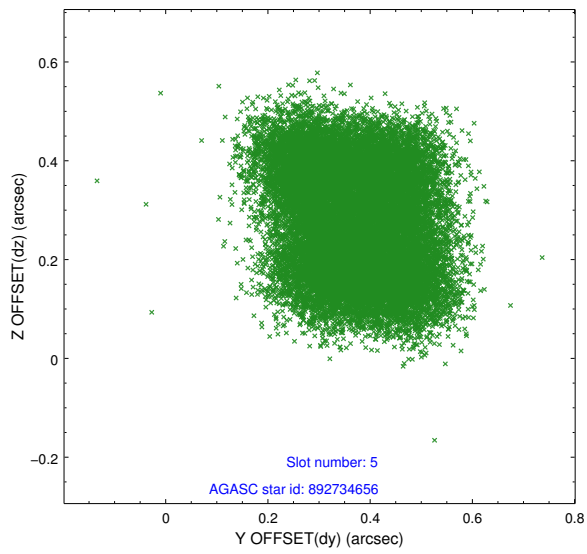
2.4.1 Slot 3



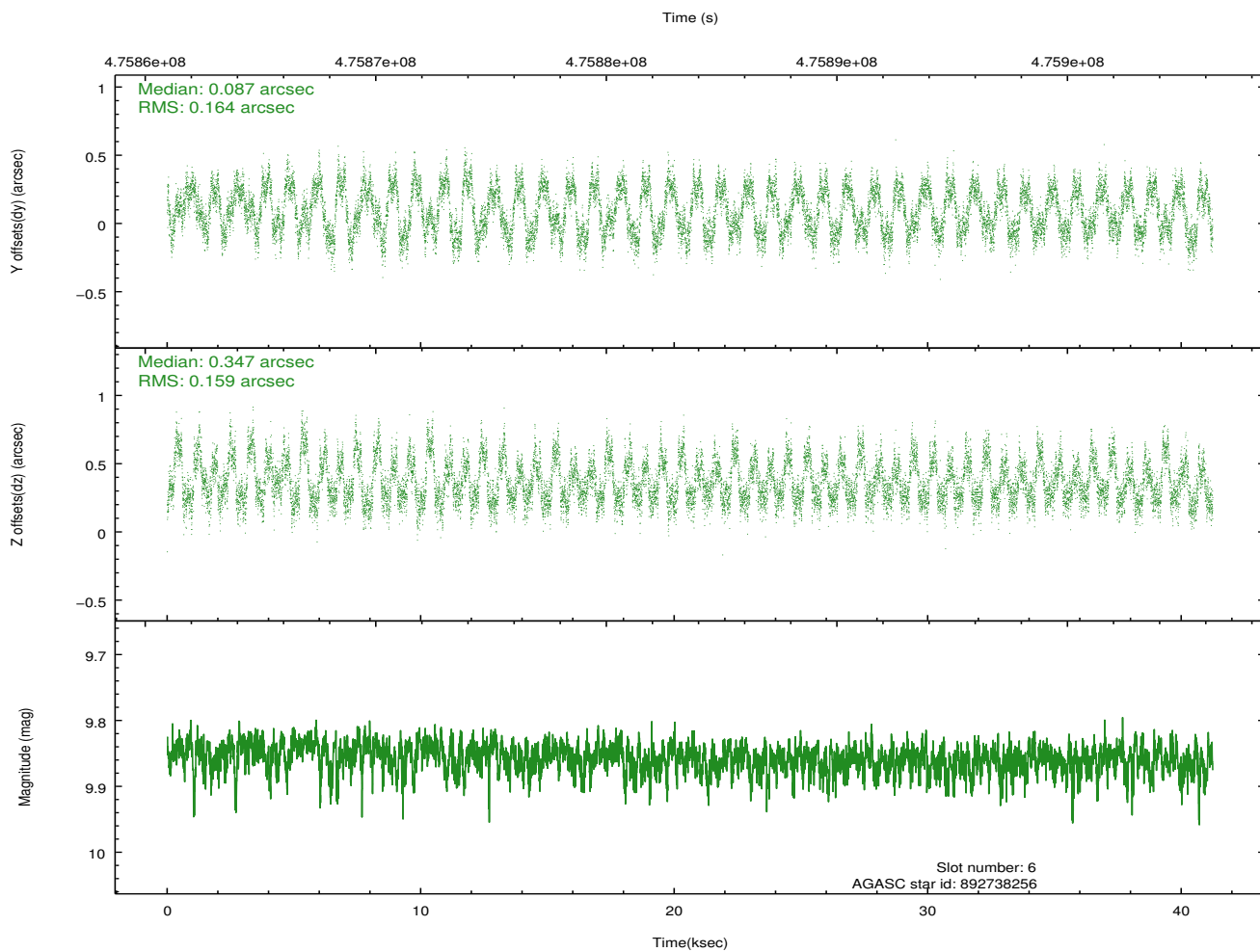
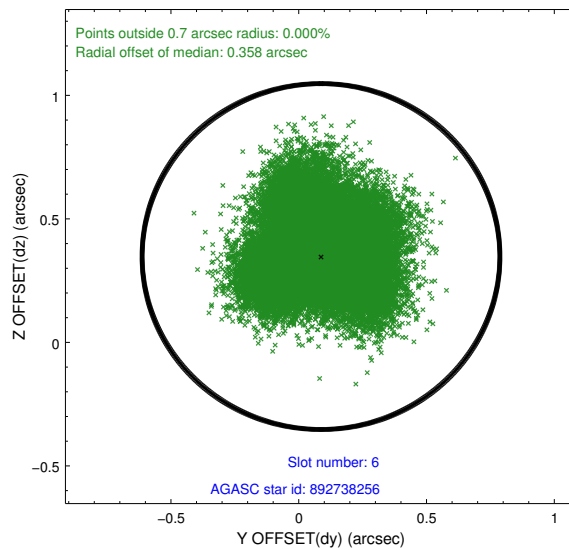
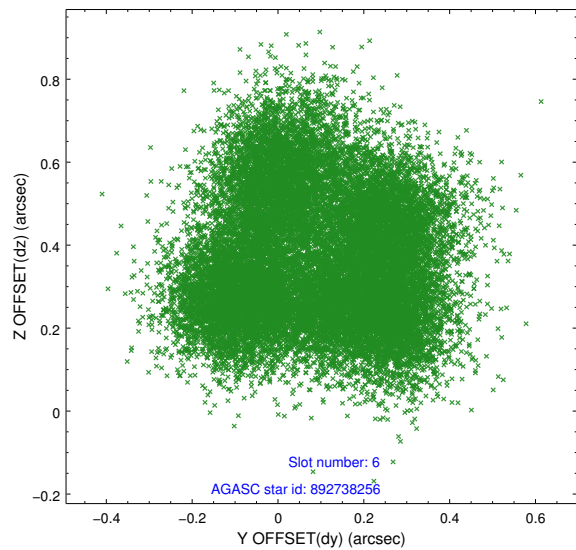
2.4.2 Slot 4



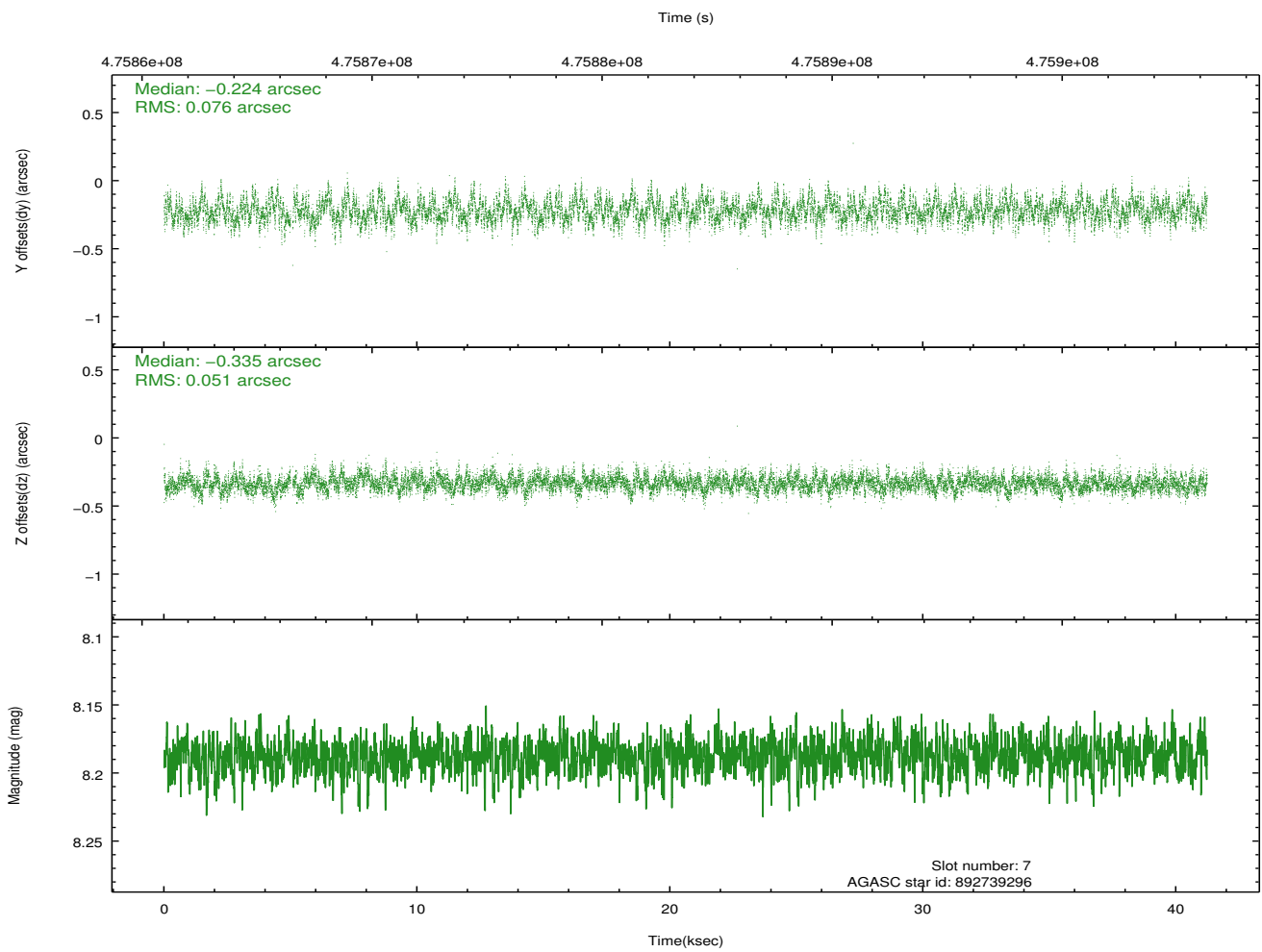
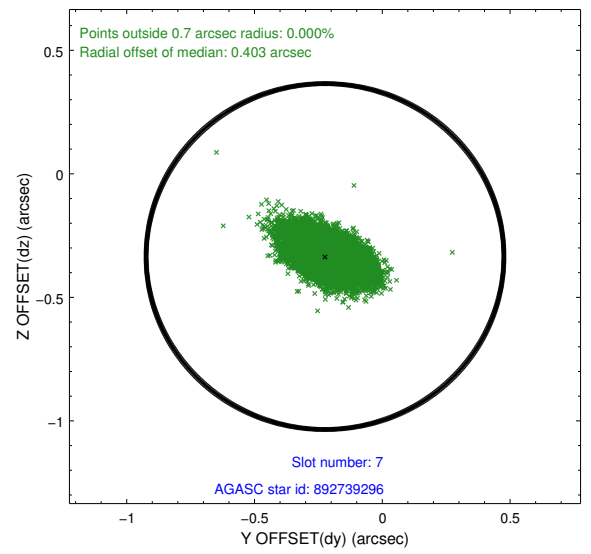
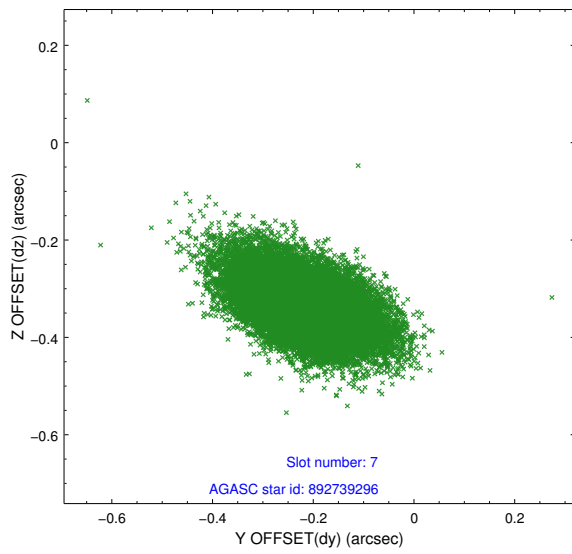
2.4.3 Slot 5



2.4.4 Slot 6

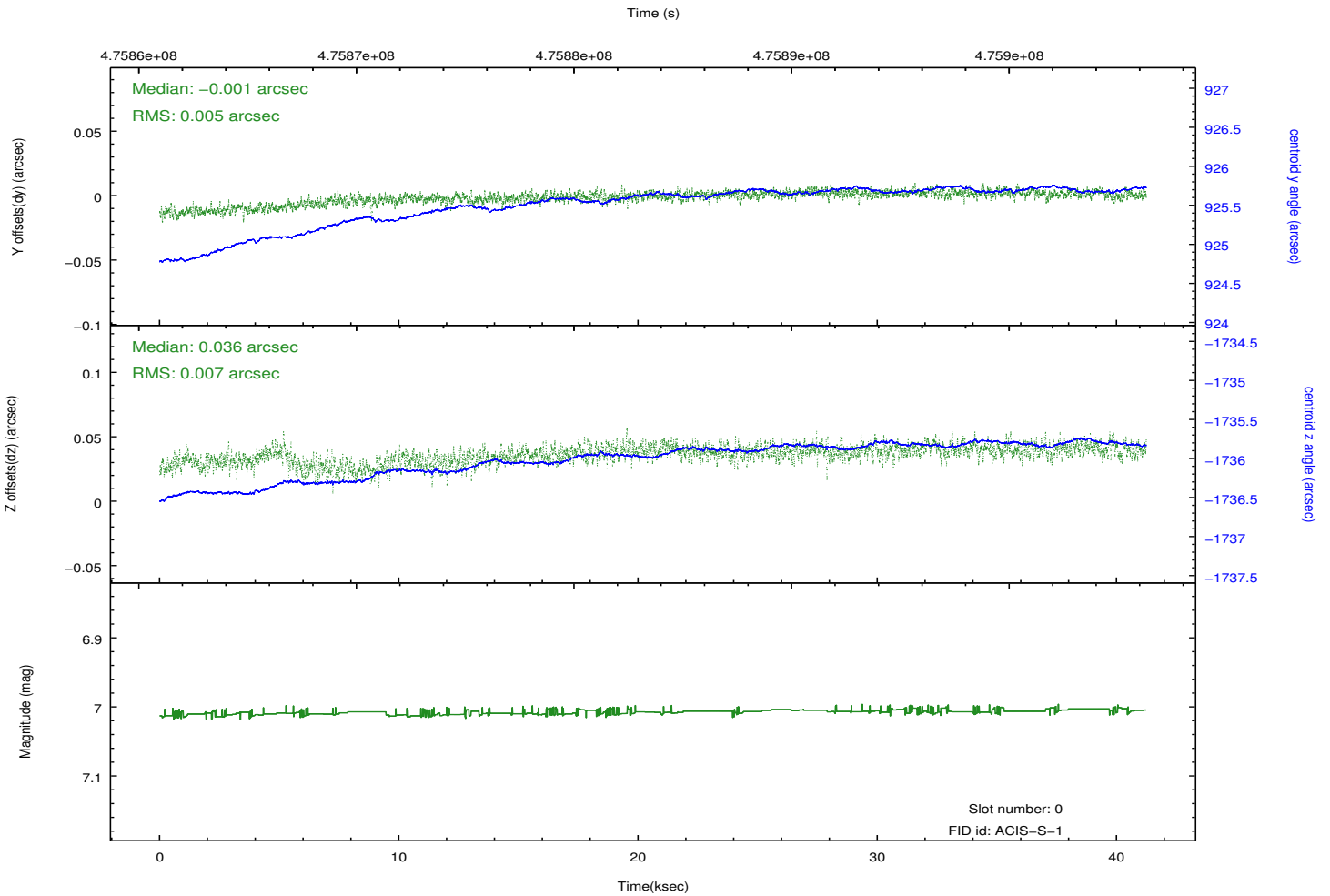
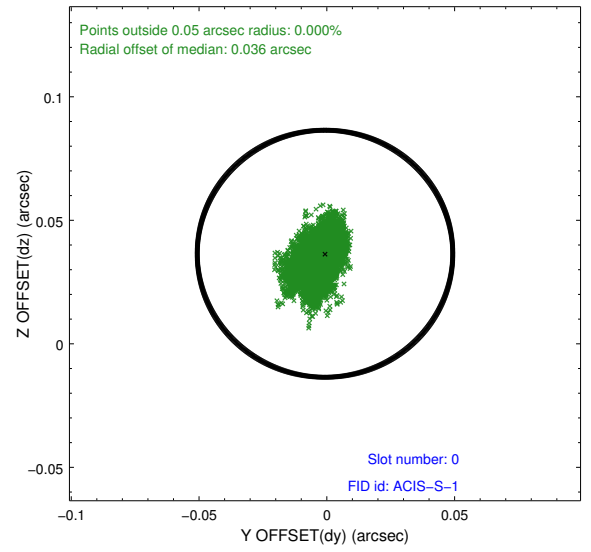
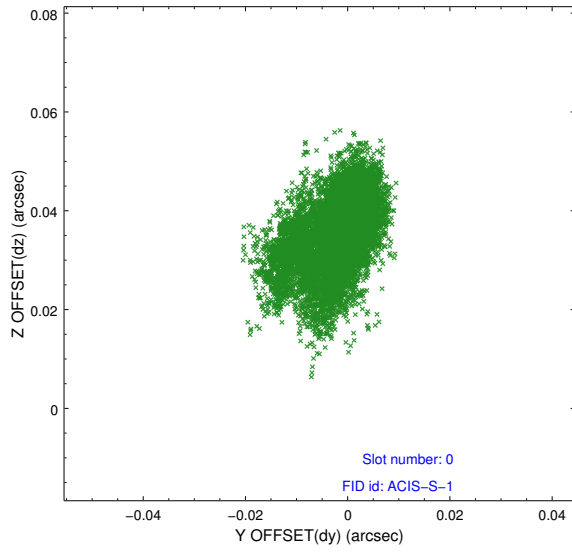


2.4.5 Slot 7

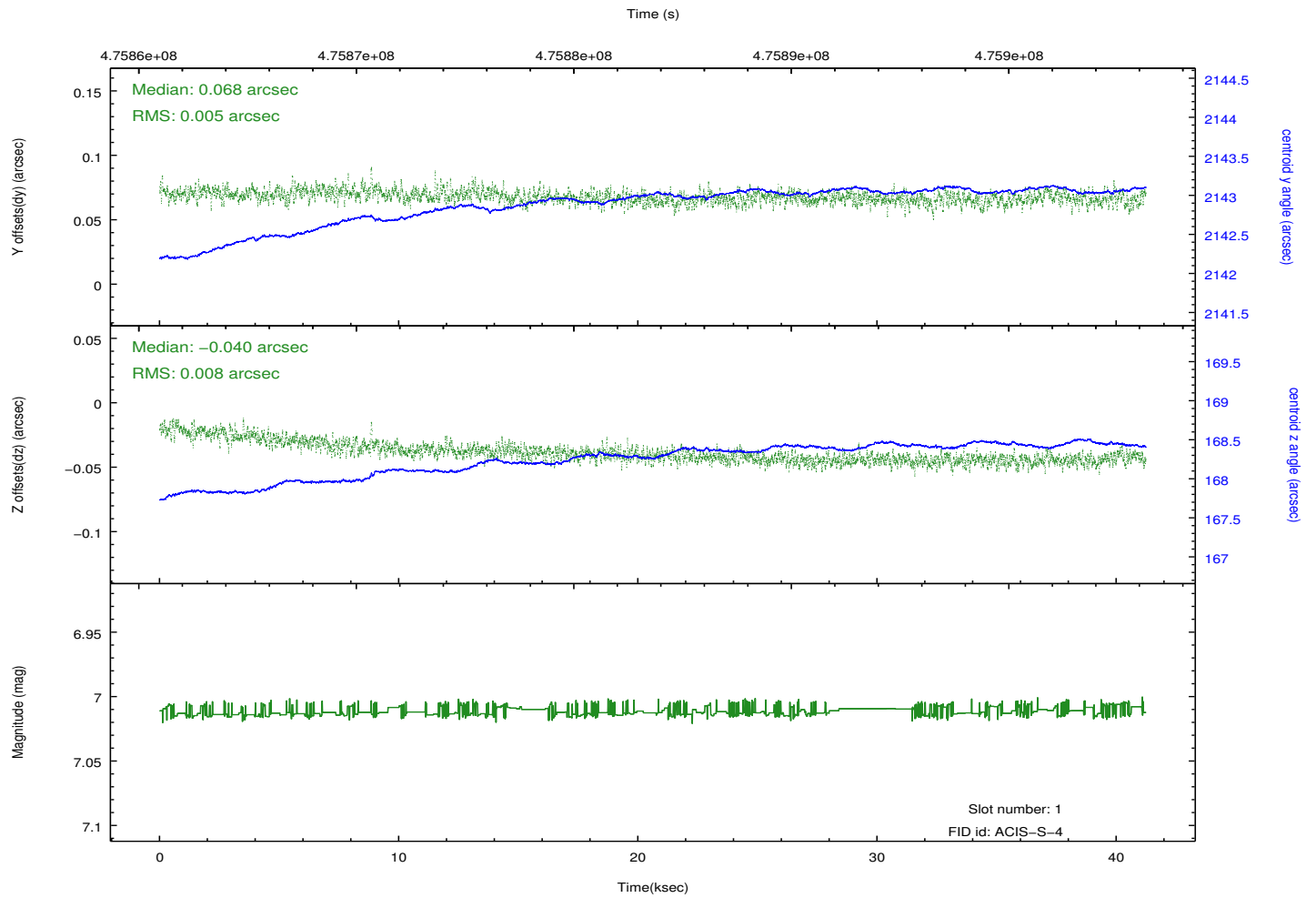
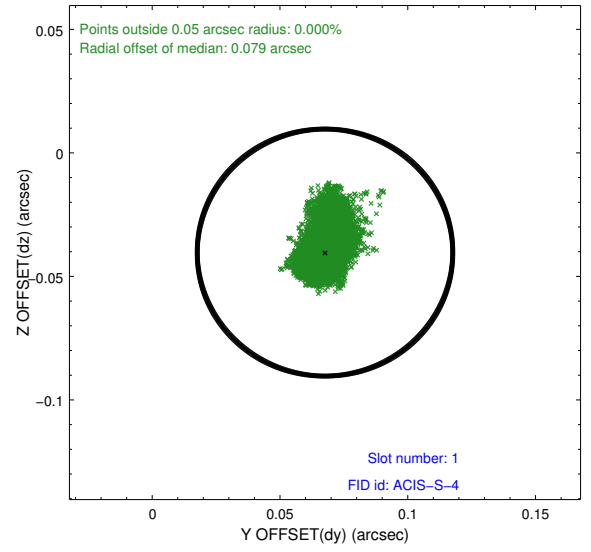
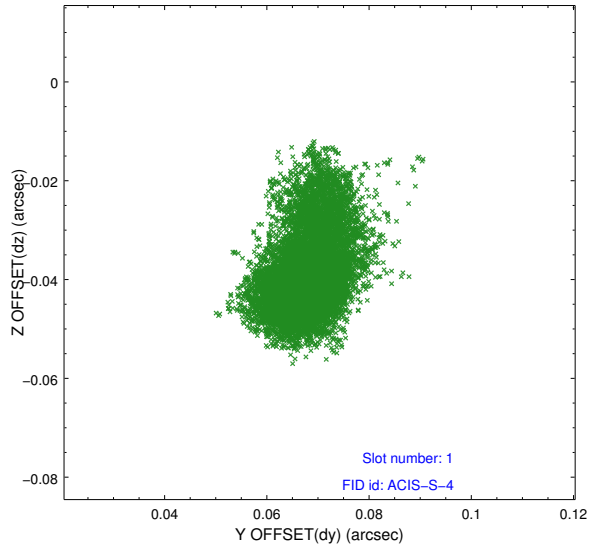


2.5 FID Slots

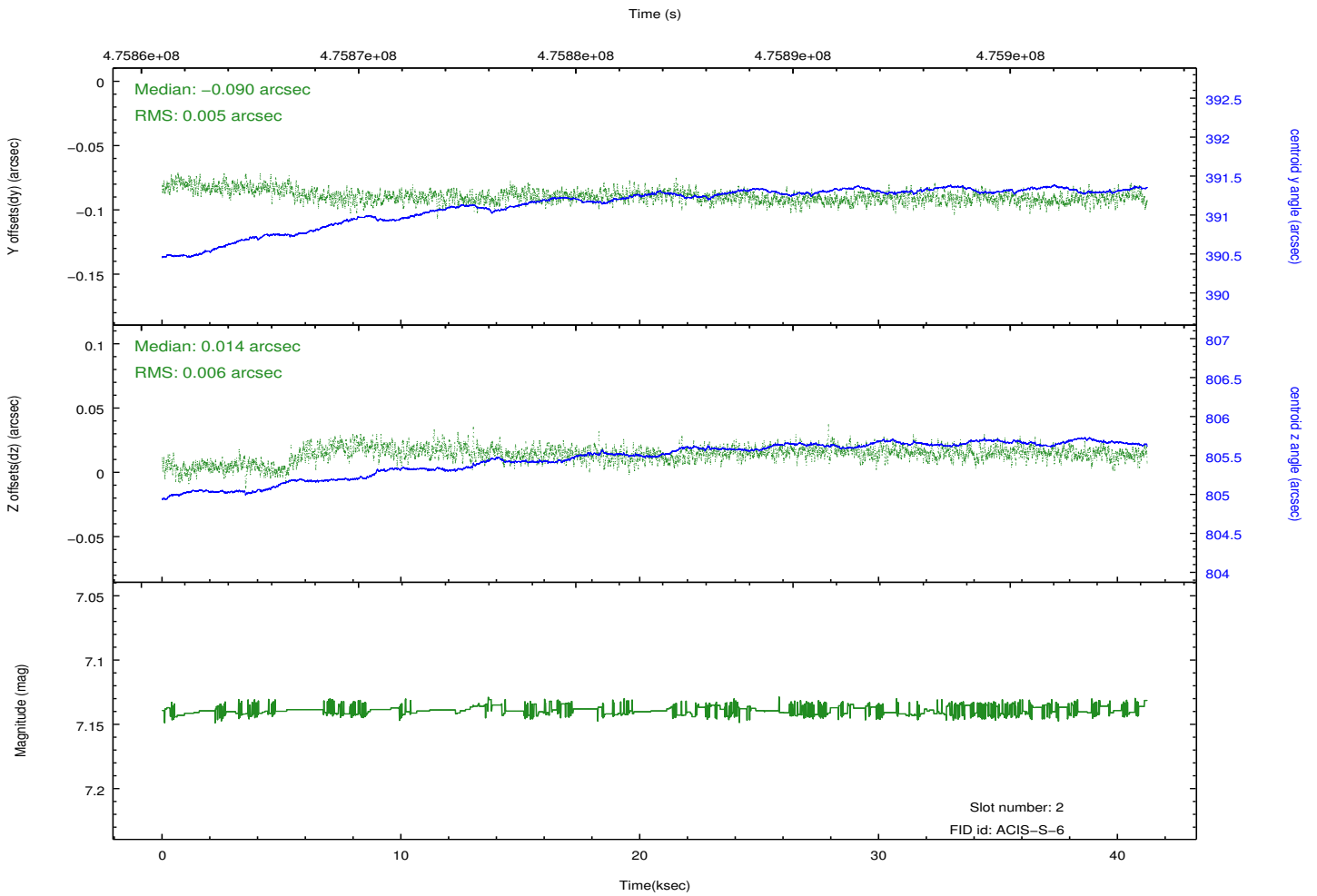
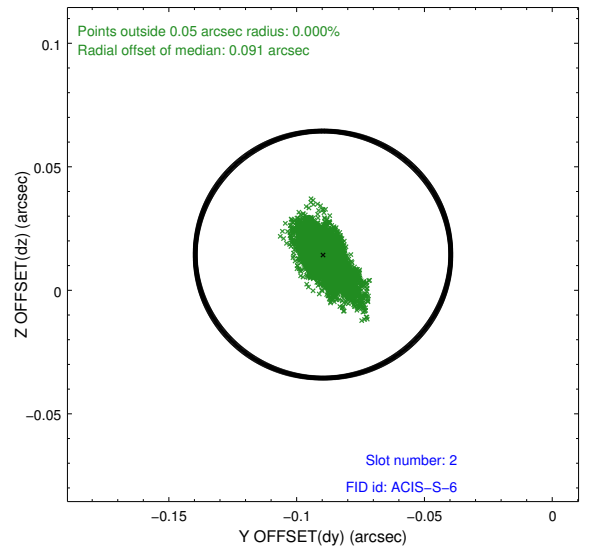
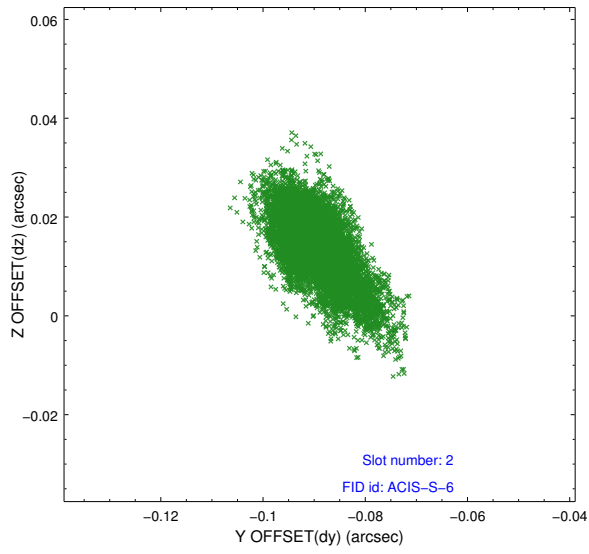
2.5.1 Slot 0



2.5.2 Slot 1



2.5.3 Slot 2



A Summary

A.1 Status

V&V Scientist	Beth Sundheim
V&V Date (YYYY-MM-DD)	2014.12.08
V&V Edition	1
V&V Disposition and Status	OK
V&V Charge Time	40.523200311661

A.2 Comments

These data have been reprocessed with new aspect alignment calibration files that correct small mean offsets (up to 0.4 arcsecs) and improve overall astrometric accuracy. The new calibration was determined using data from the time period being reprocessed and was performed using cross-correlation of X-ray sources with radio and optical counterparts.