

V&V Reference Report

L2 ASCDS Version : 8.4.3

Observation 13784 - L2 Version 2
Chandra X-Ray Center

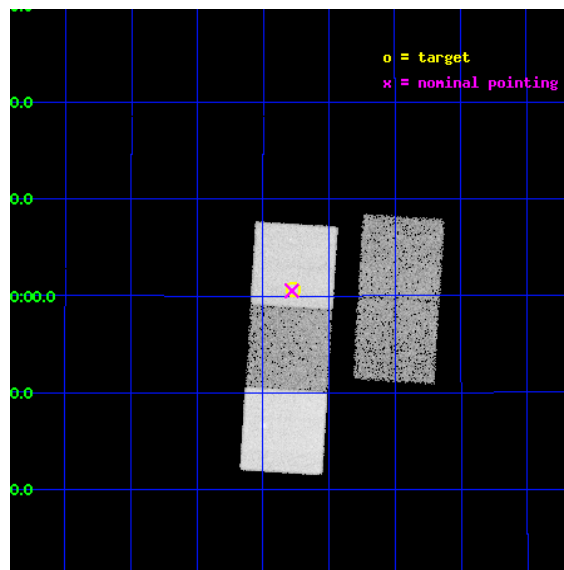
L2 Processing Date : Feb 27 2012

Contents

1	Front	2
2	OBI	3
2.1	OBI	3
2.1.1	Images	3
2.1.2	Bias	3
2.1.3	Parameters	4
2.1.4	Events	4
2.2	Compared Parameters	5
2.3	Aspect	6
2.4	Star Slots	9
2.4.1	Slot 3	9
2.4.2	Slot 4	10
2.4.3	Slot 5	11
2.4.4	Slot 6	12
2.4.5	Slot 7	13
2.5	FID Slots	14
2.5.1	Slot 0	14
2.5.2	Slot 1	15
2.5.3	Slot 2	16
A	Summary	17
A.1	Status	17
A.2	Comments	17

1 Front

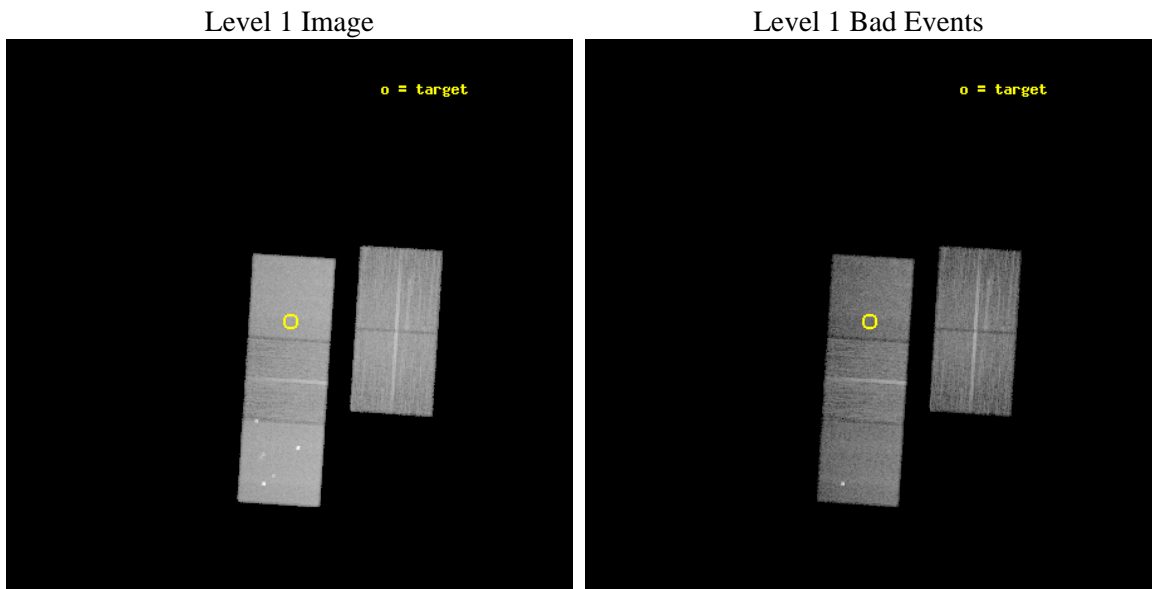
seq_num	501616	Sequence number
obs_id	13784	Observation id
title	Identification of the Host Galaxy of Swift Short GRBs by the Chandra Sub-arcsecond Position	Proposal title
observer	Dr. Takanori Sakamoto	Principal investigator
object	GRB 111117A	Source name
dtcycle	0	
cycle	P	events from which exps? Prim/Second/Both
ra_targ	12.692458	Observer's specified target RA [deg]
dec_targ	23.01025	Observer's specified target Dec [deg]
ra_nom	12.695365054049	Nominal RA [deg]
dec_nom	23.008795527623	Nominal Dec [deg]
roll_nom	273.66034899347	Nominal Roll [deg]
revision	2	Processing version of data
ontime	20086.933609247	Sum of GTIs [s]
livetime	19824.483033857	Livetime [s]
ontime2	20086.769449234	Sum of GTIs [s]
ontime3	20086.810489237	Sum of GTIs [s]
ontime5	20086.892569244	Sum of GTIs [s]
ontime6	20086.851529241	Sum of GTIs [s]
ontime7	20086.933609247	Sum of GTIs [s]
l2events	197610	Number of level 2 events



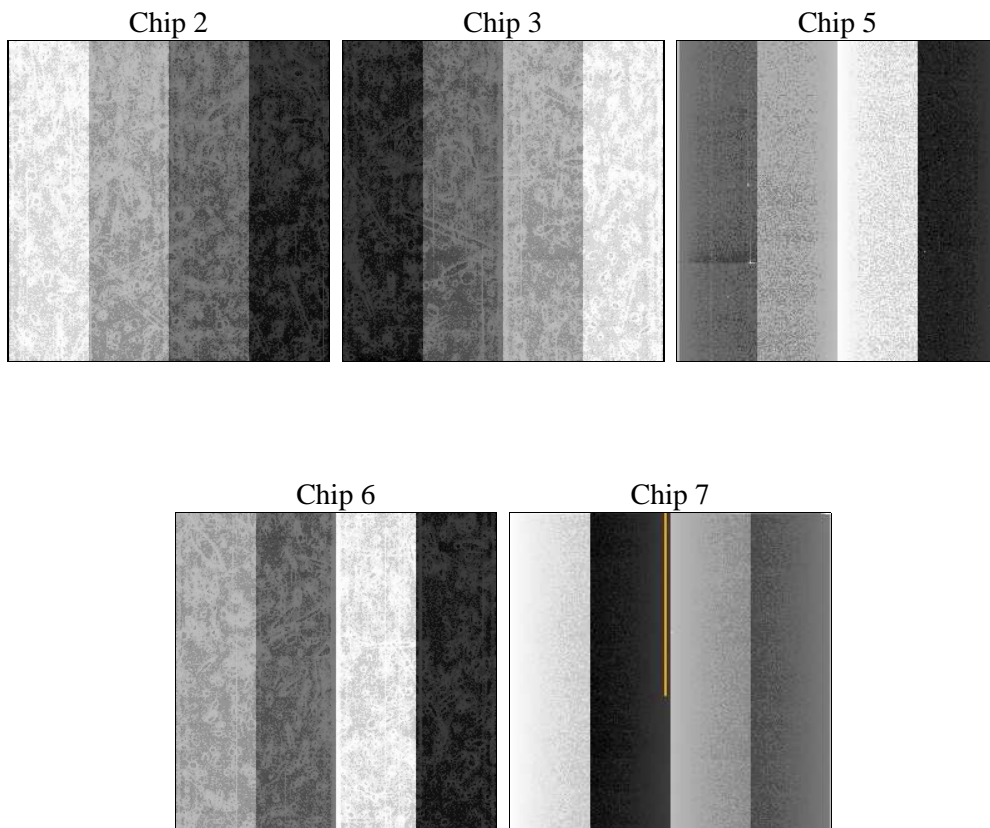
2 OBI

2.1 OBI

2.1.1 Images



2.1.2 Bias



2.1.3 Parameters

obi_num	0	Obi number	sched_exp_time	20042.151000	[s] Scheduled observation exposure time
ascdsver	8.4.3	Processing system revision	ontime	20086.933609247	Sum of GTIs [s]
caldbver	4.4.8	 	ontime2	20086.769449234	Sum of GTIs [s]
date	2012-02-27T12:01:25	Date and time of file creation	ontime3	20086.810489237	Sum of GTIs [s]
revision	2	Processing version of data	ontime5	20086.892569244	Sum of GTIs [s]
			ontime6	20086.851529241	Sum of GTIs [s]
			ontime7	20086.933609247	Sum of GTIs [s]
			l1events	733067	Number of level 1 events

2.1.4 Events

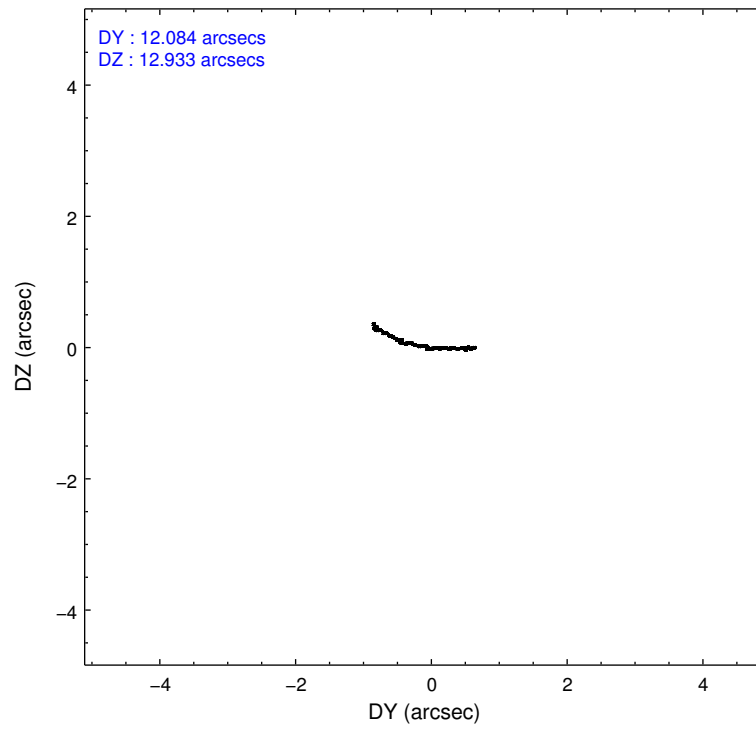
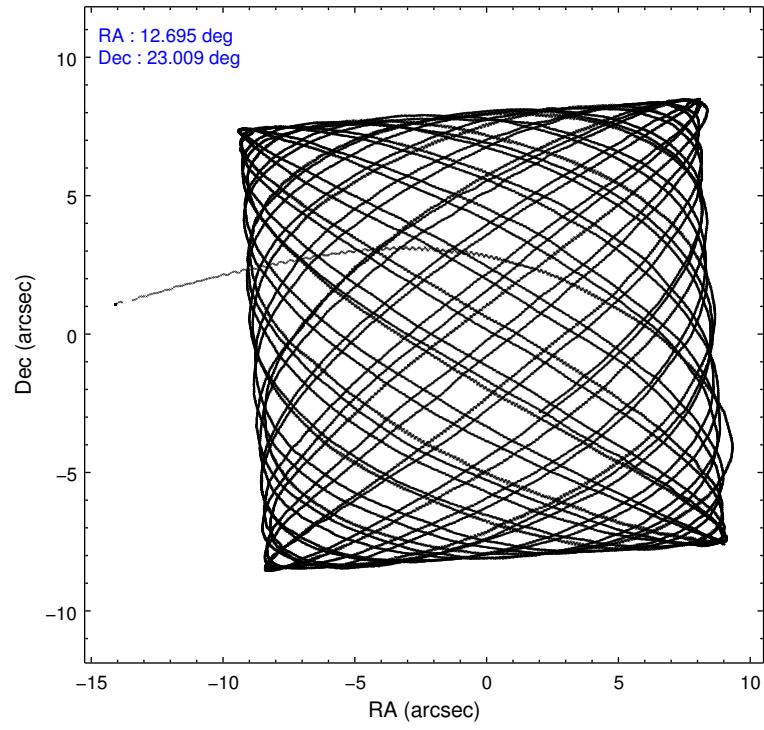
	ccd 2	ccd 3	ccd 5	ccd 6	ccd 7
level 1 events	121152	116879	206849	126056	162131
rejected events	107713	103850	103619	111199	90356
rejected %	88%	88%	50%	88%	55%

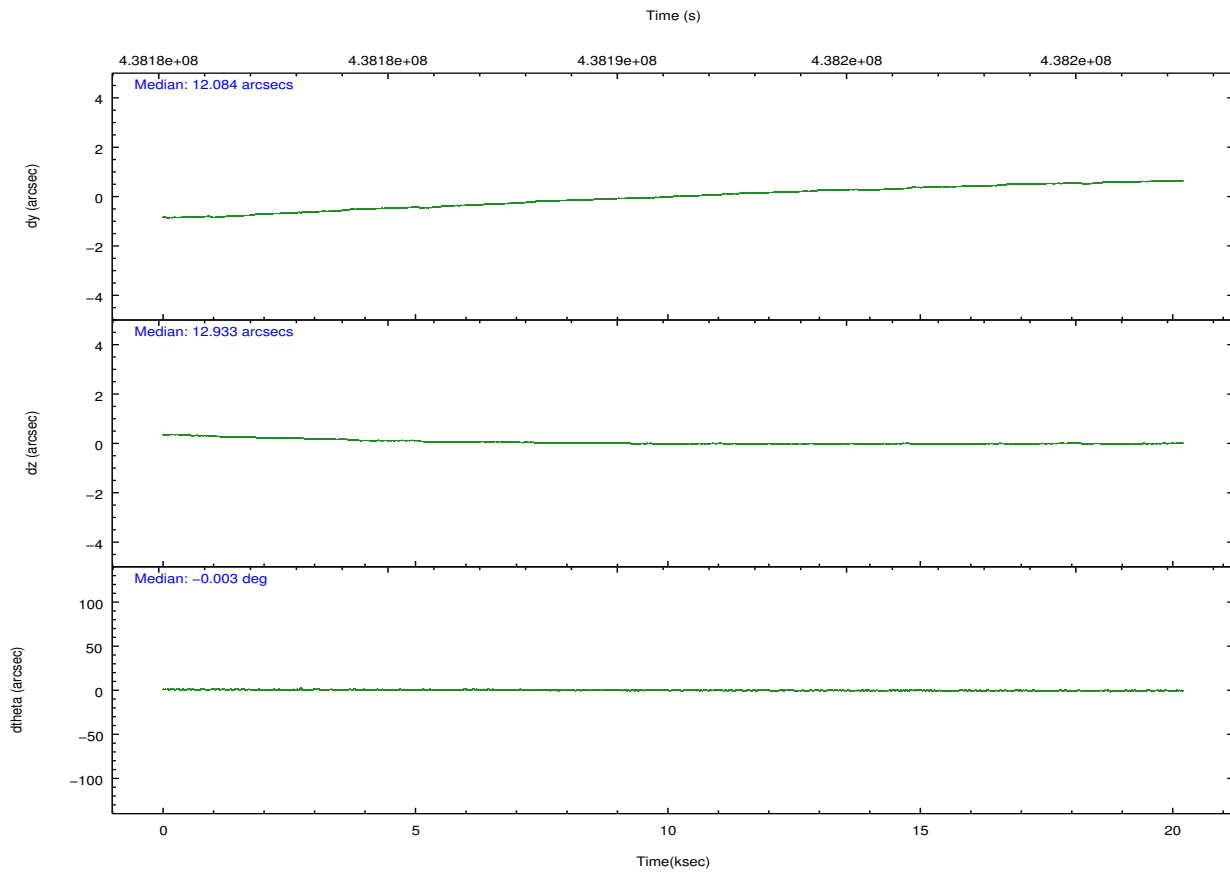
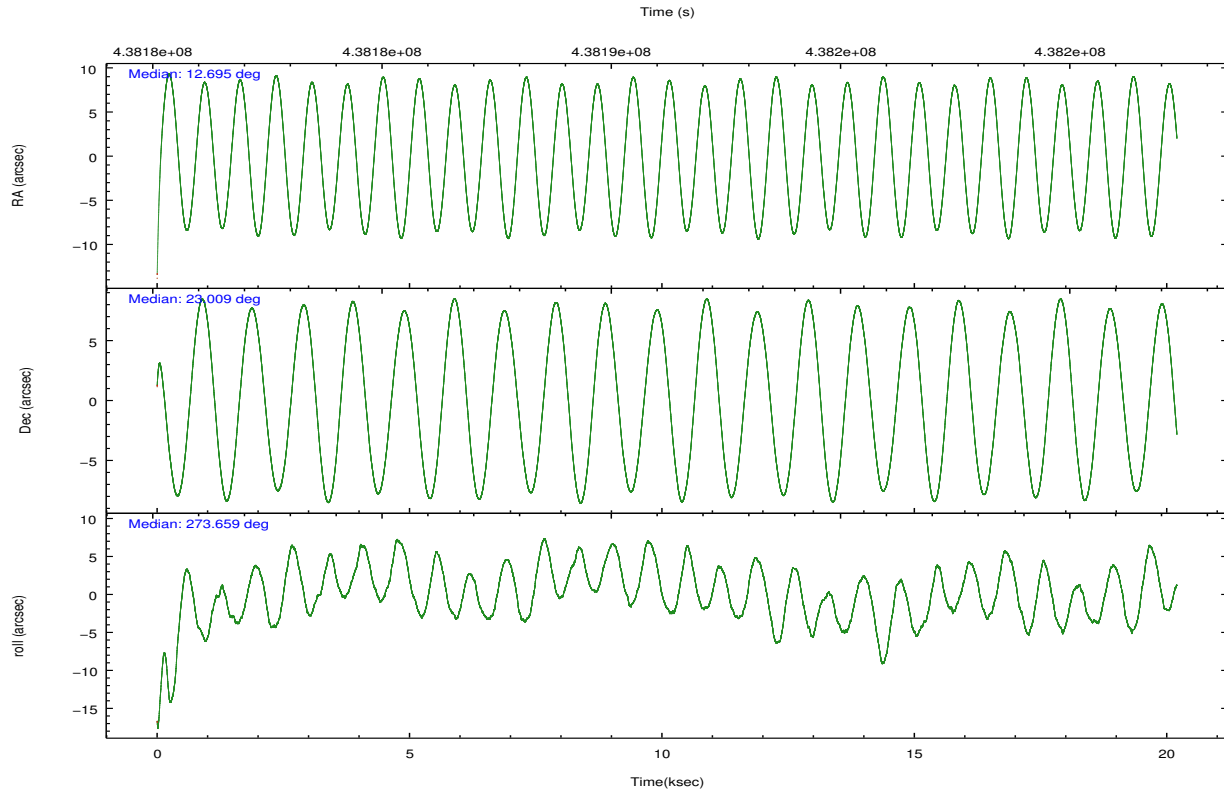
	ccd 2	ccd 3	ccd 5	ccd 6	ccd 7
grade 0 events	4715	4490	13408	5060	6378
	3%	3%	6%	4%	3%
grade 1 events	87	67	442	70	213
	0%	0%	0%	0%	0%
grade 2 events	3246	2958	30560	3438	14715
	2%	2%	14%	2%	9%
grade 3 events	1401	1404	3986	1568	6352
	1%	1%	1%	1%	3%
grade 4 events	1453	1496	3633	1492	6144
	1%	1%	1%	1%	3%
grade 5 events	5043	6098	16177	6266	16842
	4%	5%	7%	4%	10%
grade 6 events	2630	2684	51670	3307	38208
	2%	2%	24%	2%	23%
grade 7 events	102577	97682	86973	104855	73279
	84%	83%	42%	83%	45%

2.2 Compared Parameters

Parameter	Planned	Actual	Parameter	Planned	Actual
Instrument	ACIS	ACIS	Obspar format version number	7	7
Detector	ACIS-23567	ACIS-23567	Obspar file type	PREDICTED	ACTUAL
Grating	NONE	NONE	Obspar update status	NONE	UPDATED
Data mode	FAINT	FAINT	Number of optional ACIS chips dropped	0	0
Observation mode	POINTING	POINTING	On-chip summing requested	N	N
[deg] Pointing RA	12.678528	12.69536505404893	Subarray requested	NONE	NONE
[deg] Pointing Dec	23.031338	23.00879552762325	Alternating exposures requested	N	N
[deg] Pointing Roll	273.510307	273.6603489934745	[s] Primary exposure time	0.000000	3.1
[mm] SIM focus pos	-0.684267	-0.6828225247311905			
[mm] SIM defocus	0	0.001444936568705701			
[mm] SIM translation stage pos	-190.132523	-190.1400660498719			
[mm] SIM translation stage offset	0	0.00754346686406393			
[s] Observation start time (MET)	438181281.184000	438179965.13179			
Observation start date	2011-11-20T13:00:15	2011-11-20T12:39:25			
[s] Observation end time (MET)	438201323.184000	438201550.60793			
Observation end date	2011-11-20T18:34:17	2011-11-20T18:39:10			
Read mode	TIMED	TIMED			

2.3 Aspect



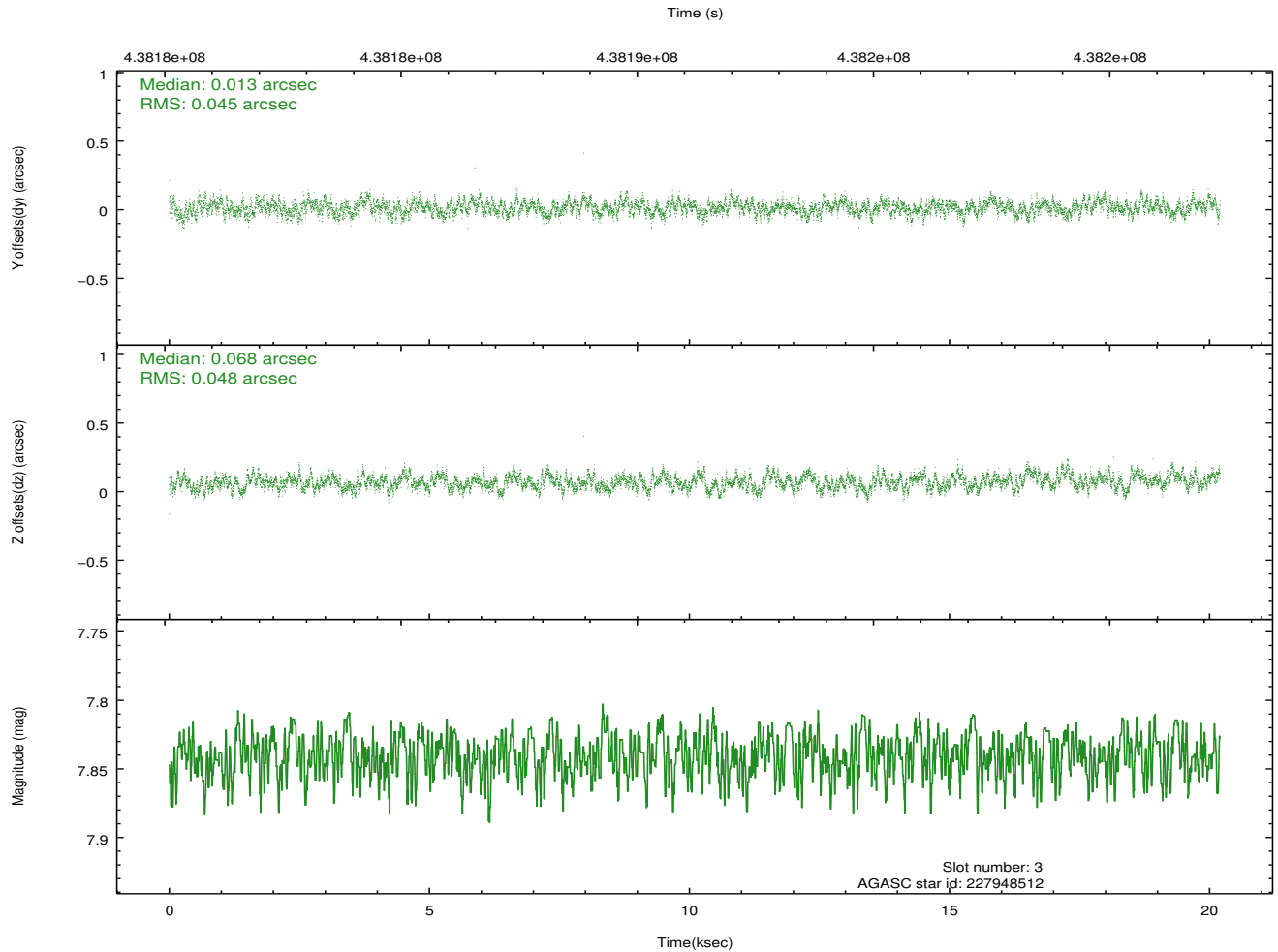
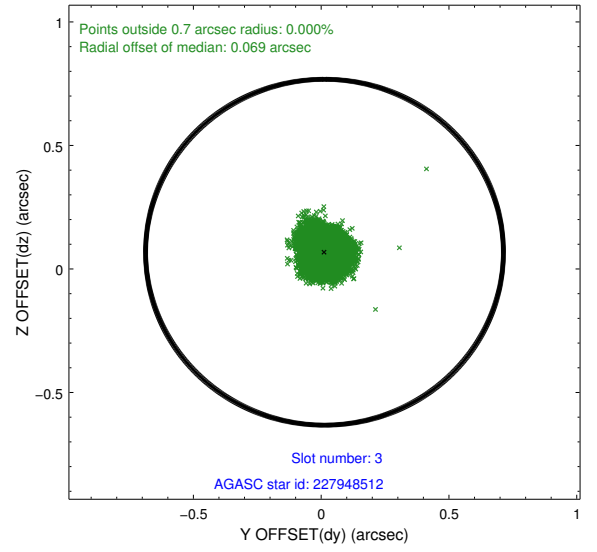
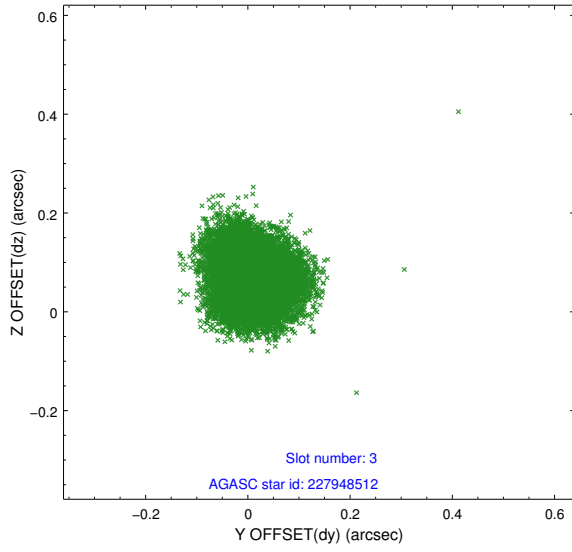


Slot Statistics

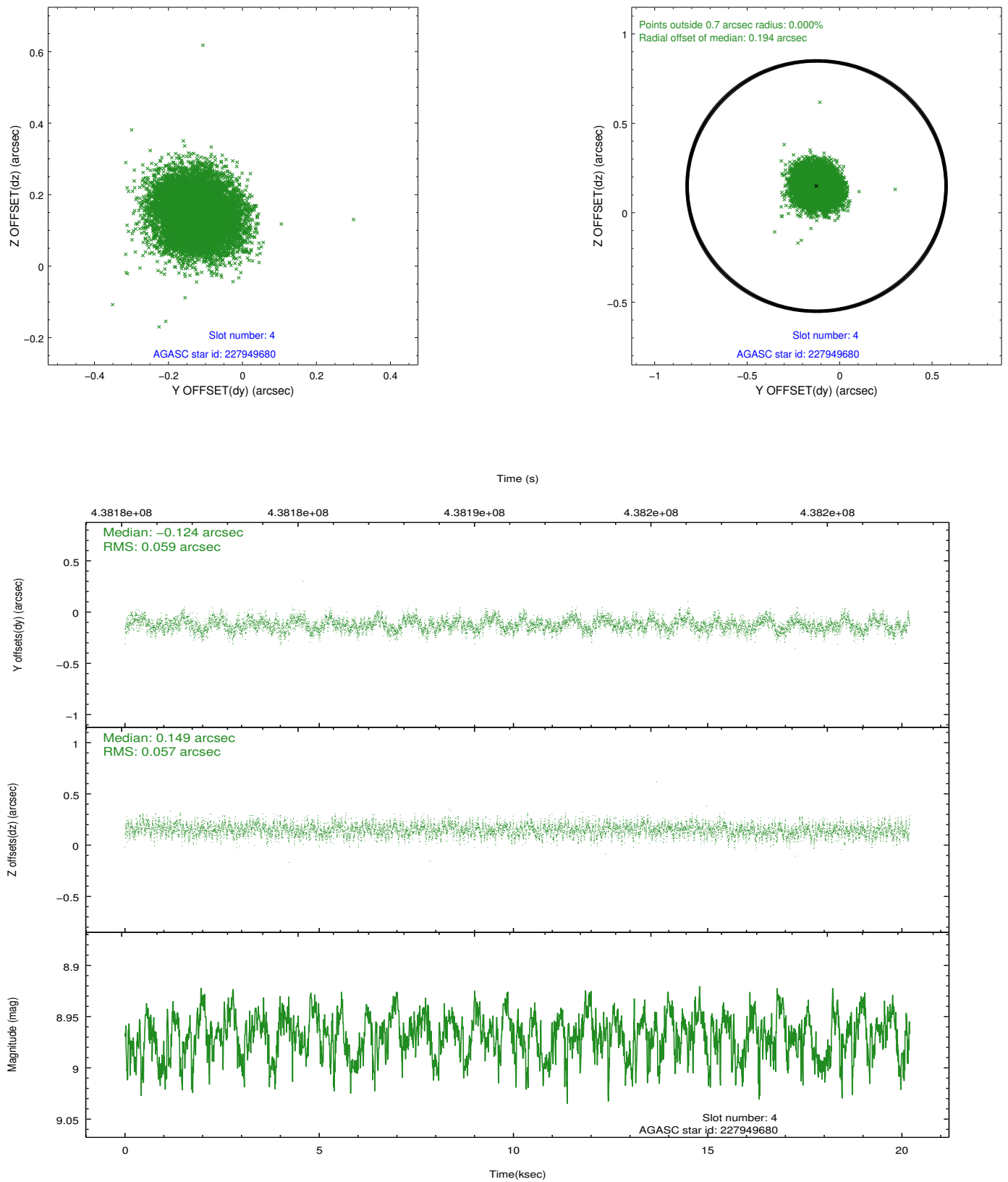
slot	status	id	mag	n_pts	med_dy	med_dz	dr1	dr2	ra	dec	mean_y	mean_z
0	FID	ACIS-S-2	6.89	4928	-0.033	-0.041	0.009	0.016	0.000000	0.000000	-765.00	-1734.34
1	FID	ACIS-S-4	6.97	4928	0.174	0.027	0.008	0.016	0.000000	0.000000	2148.43	173.97
2	FID	ACIS-S-5	7.01	4928	-0.173	0.022	0.010	0.018	0.000000	0.000000	-1817.71	167.91
3	GUIDE	227948512	7.84	9854	0.013	0.068	0.071	0.112	12.368350	23.128270	-411.79	-1003.15
4	GUIDE	227949680	8.97	9850	-0.124	0.149	0.088	0.139	13.305018	22.924916	505.37	2050.38
5	GUIDE	227949856	8.40	9854	0.006	-0.183	0.079	0.124	12.820660	22.854232	665.39	431.74
6	GUIDE	227950016	8.49	9846	0.119	-0.104	0.104	0.161	12.771167	22.881860	556.45	273.87
7	GUIDE	227946928	9.81	9786	-0.009	0.067	0.124	0.197	12.828369	23.477189	-1571.55	592.45

2.4 Star Slots

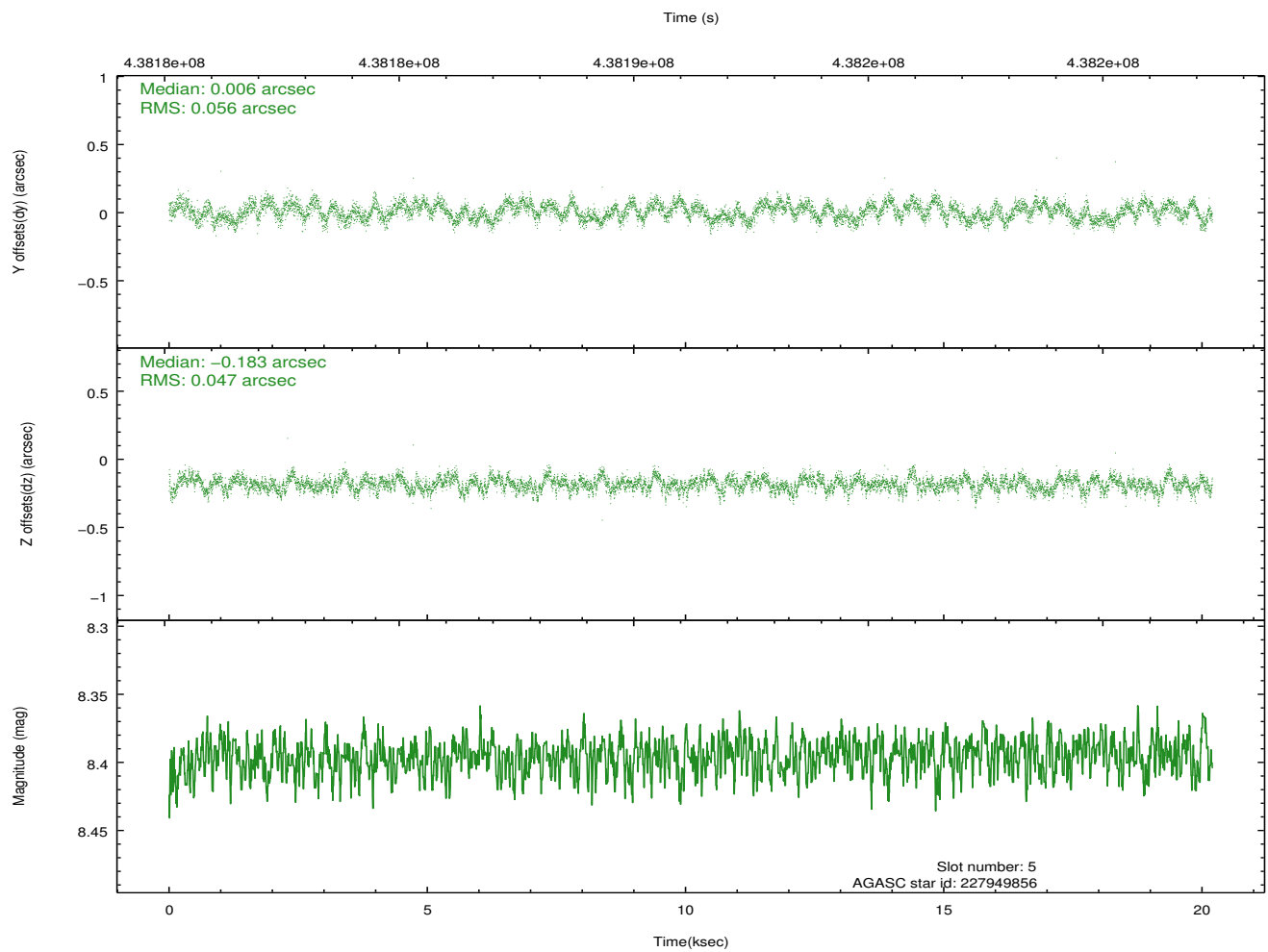
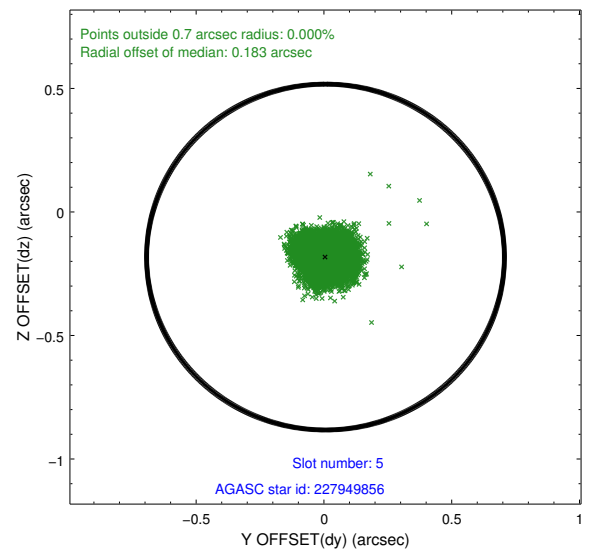
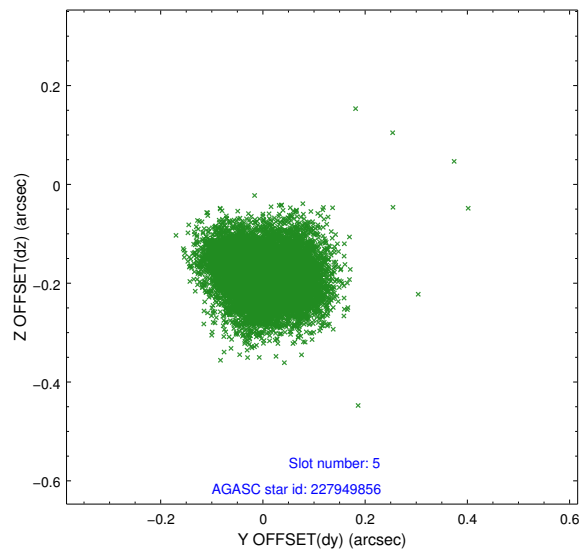
2.4.1 Slot 3



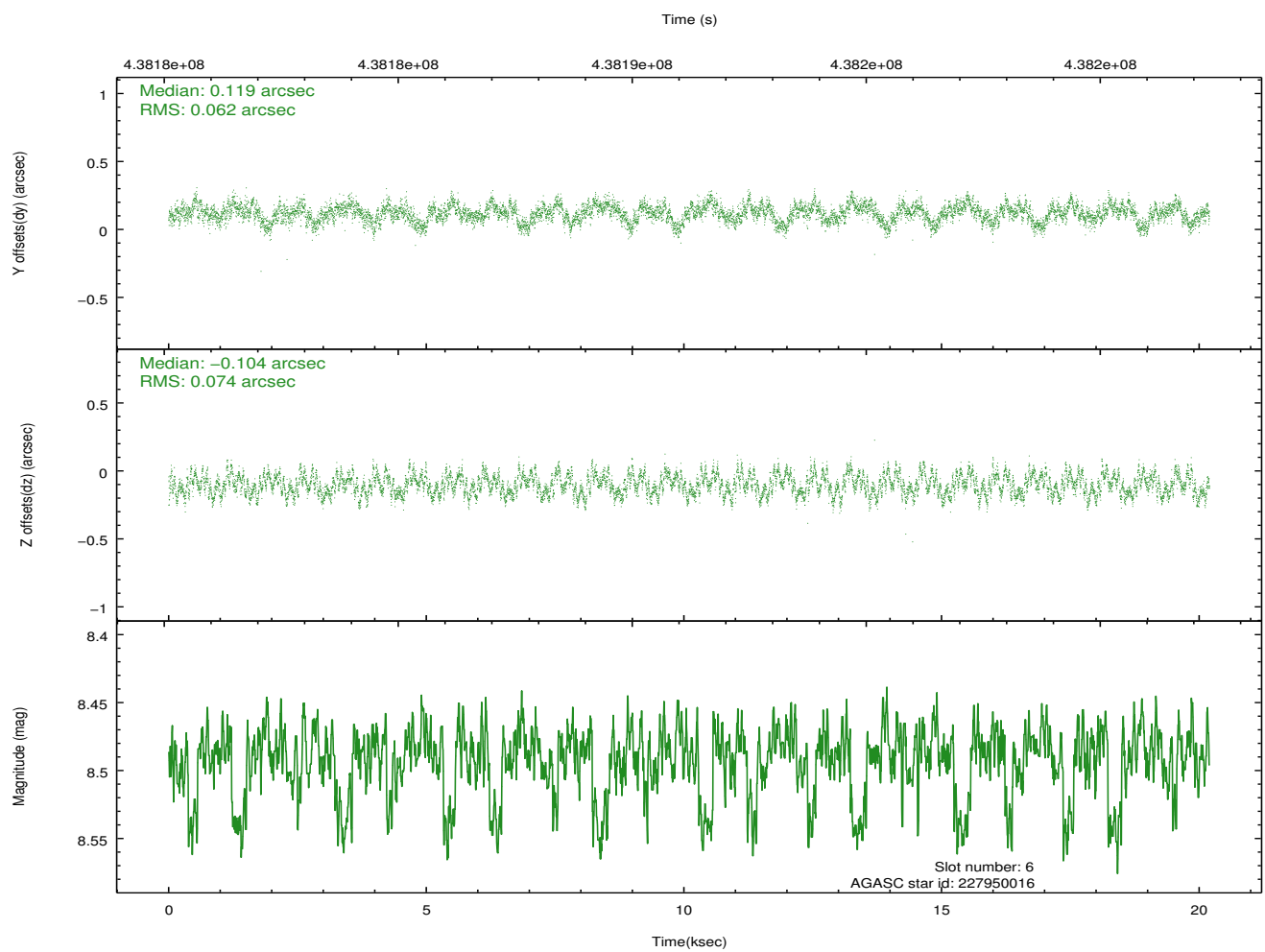
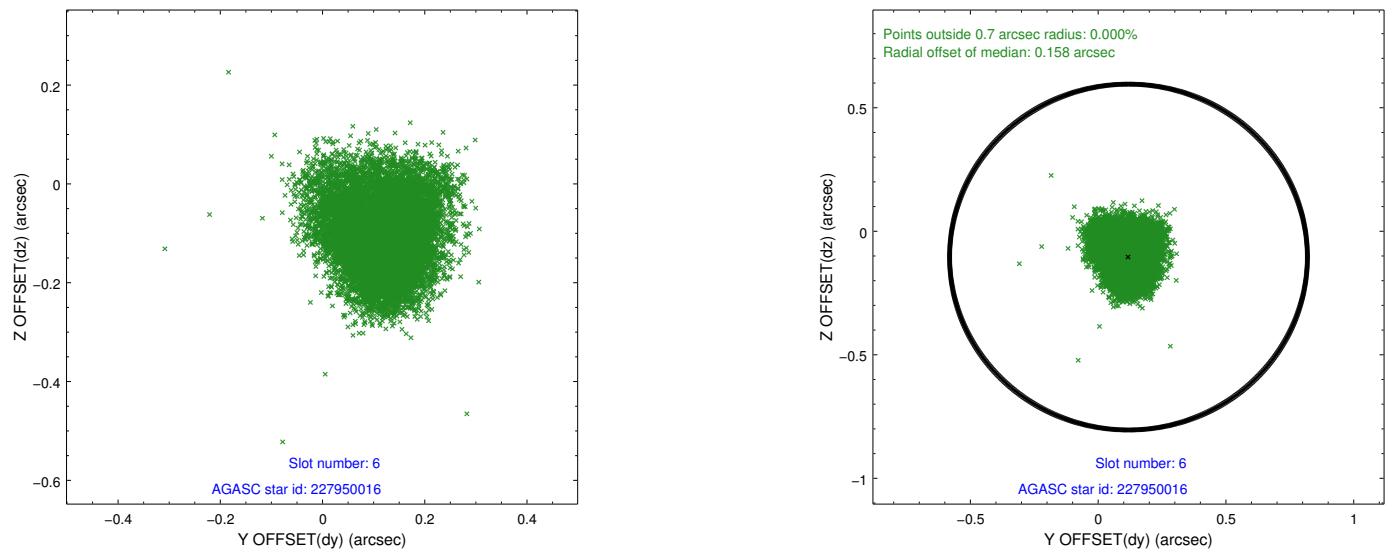
2.4.2 Slot 4



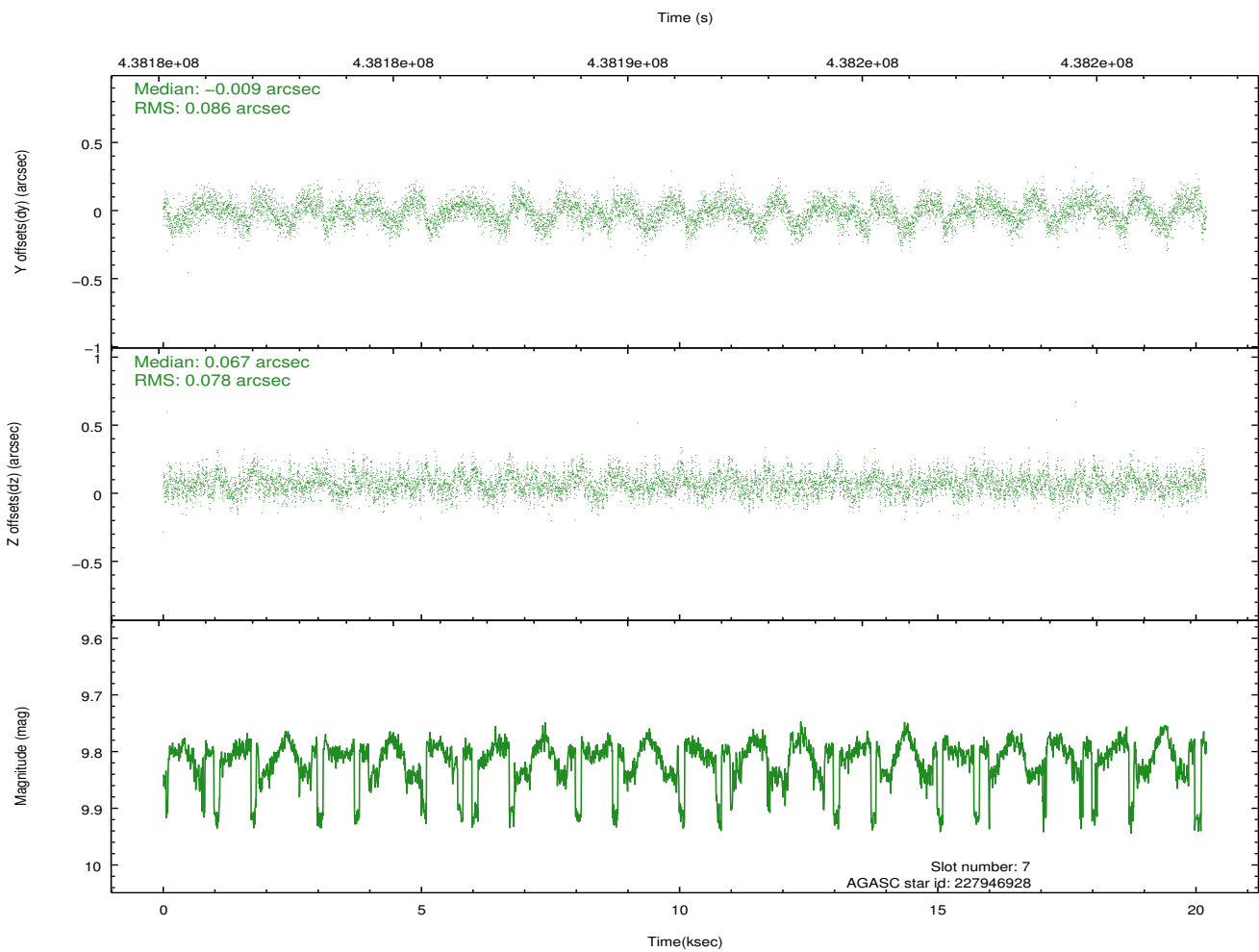
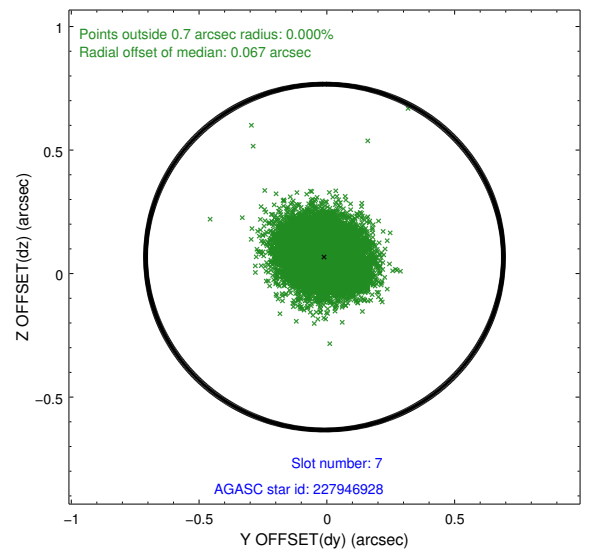
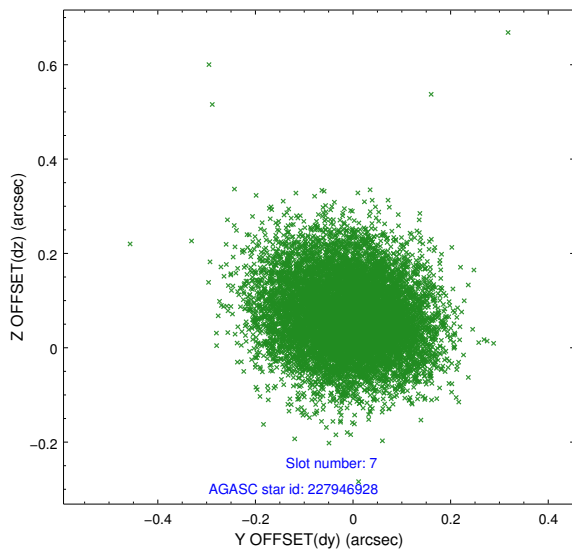
2.4.3 Slot 5



2.4.4 Slot 6

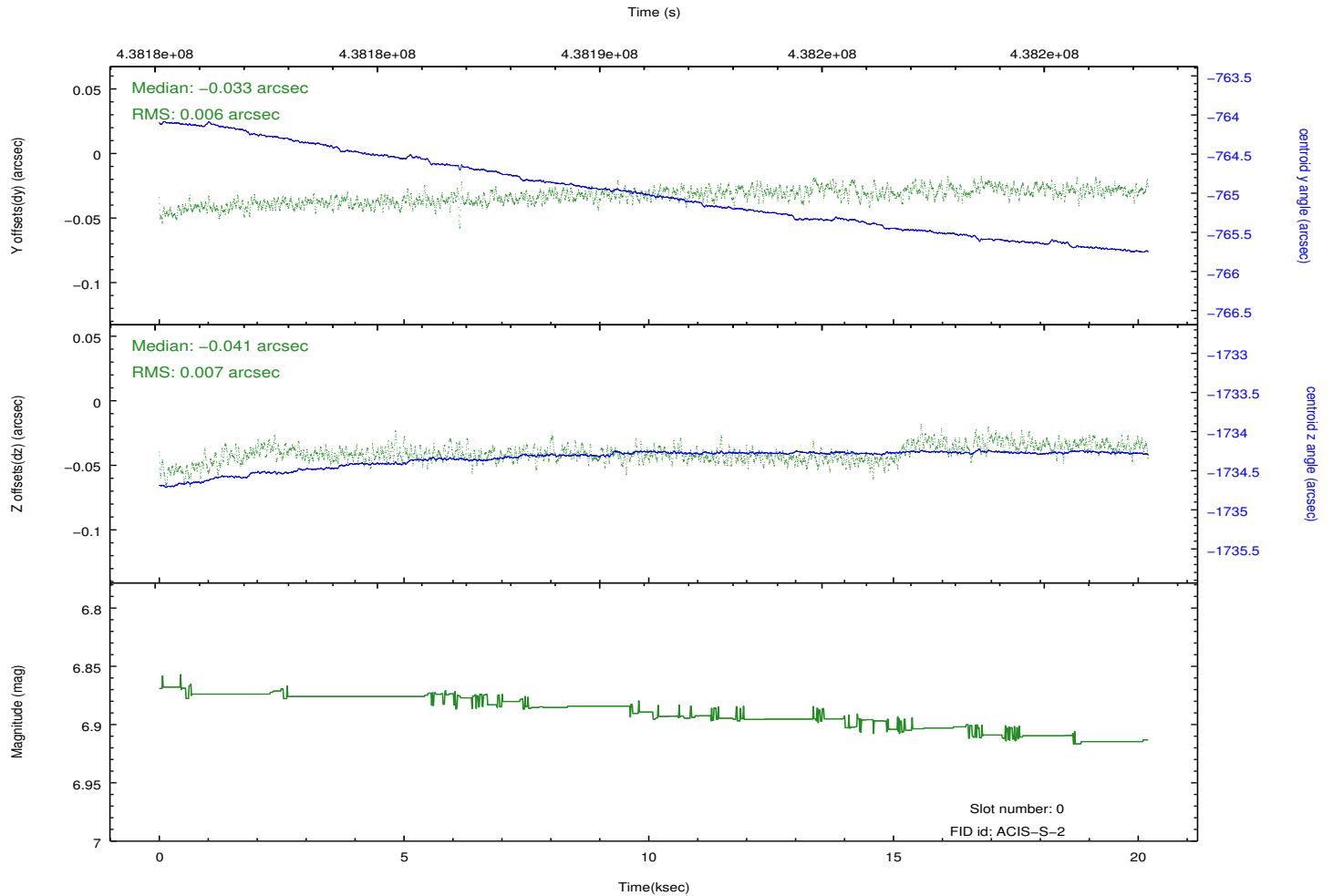
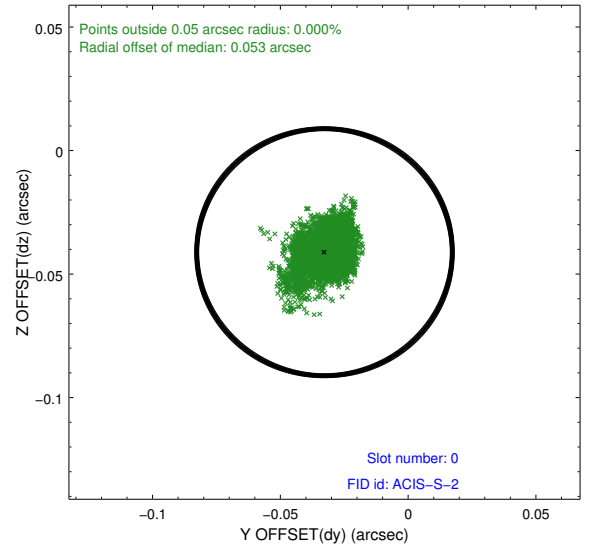
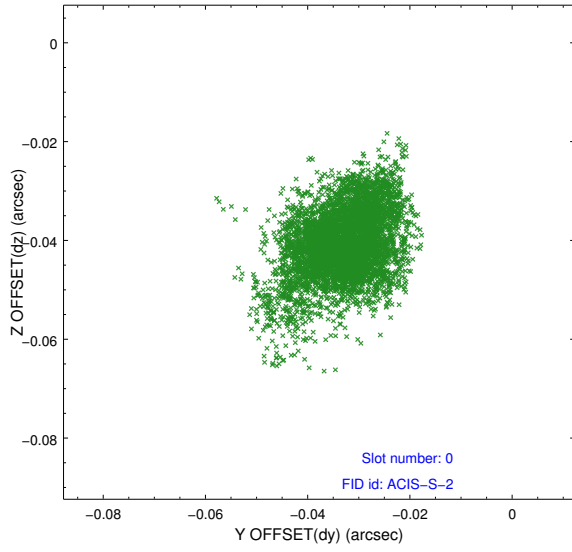


2.4.5 Slot 7

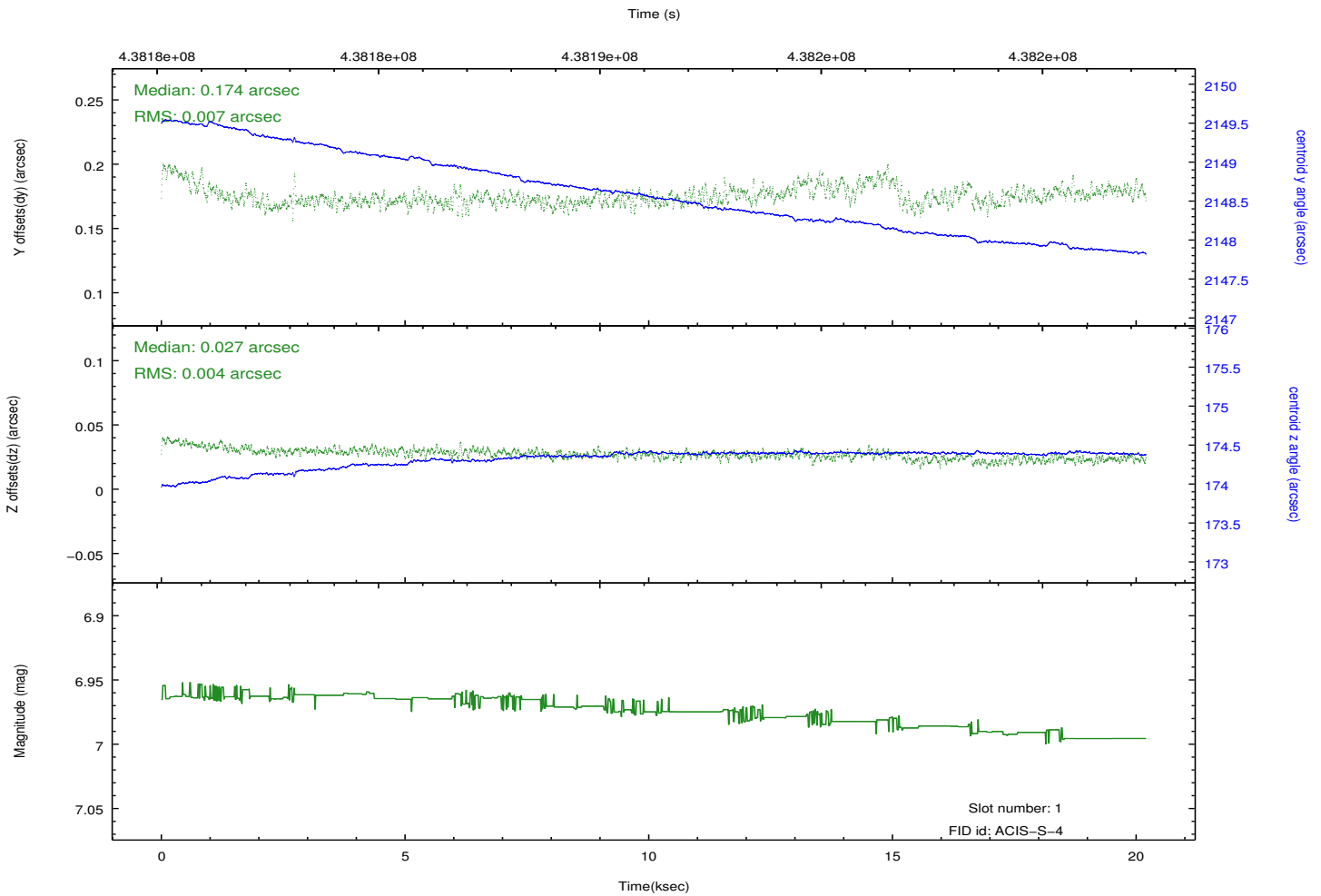
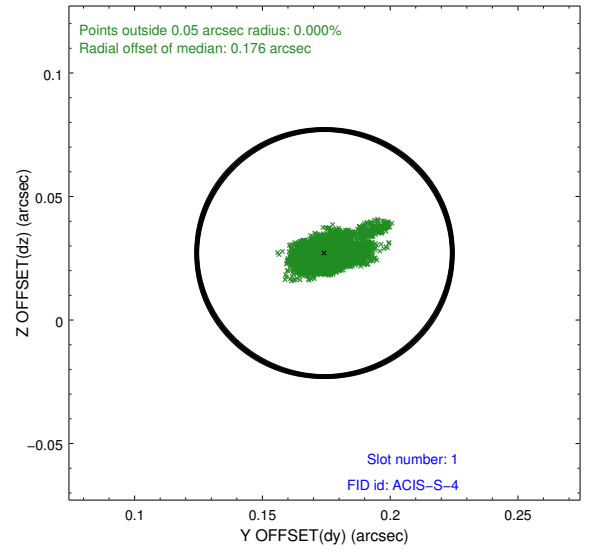
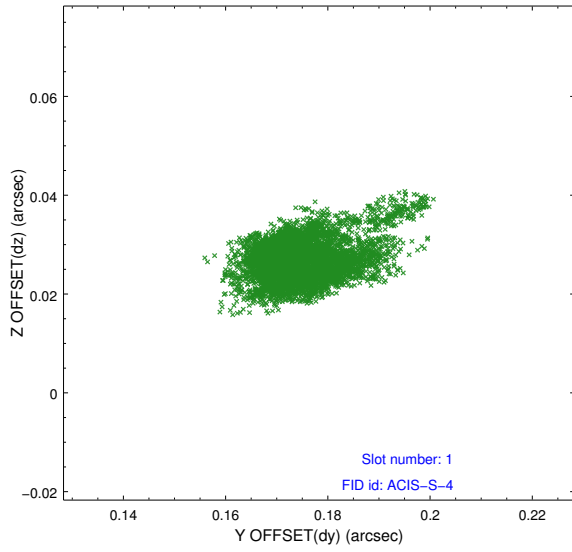


2.5 FID Slots

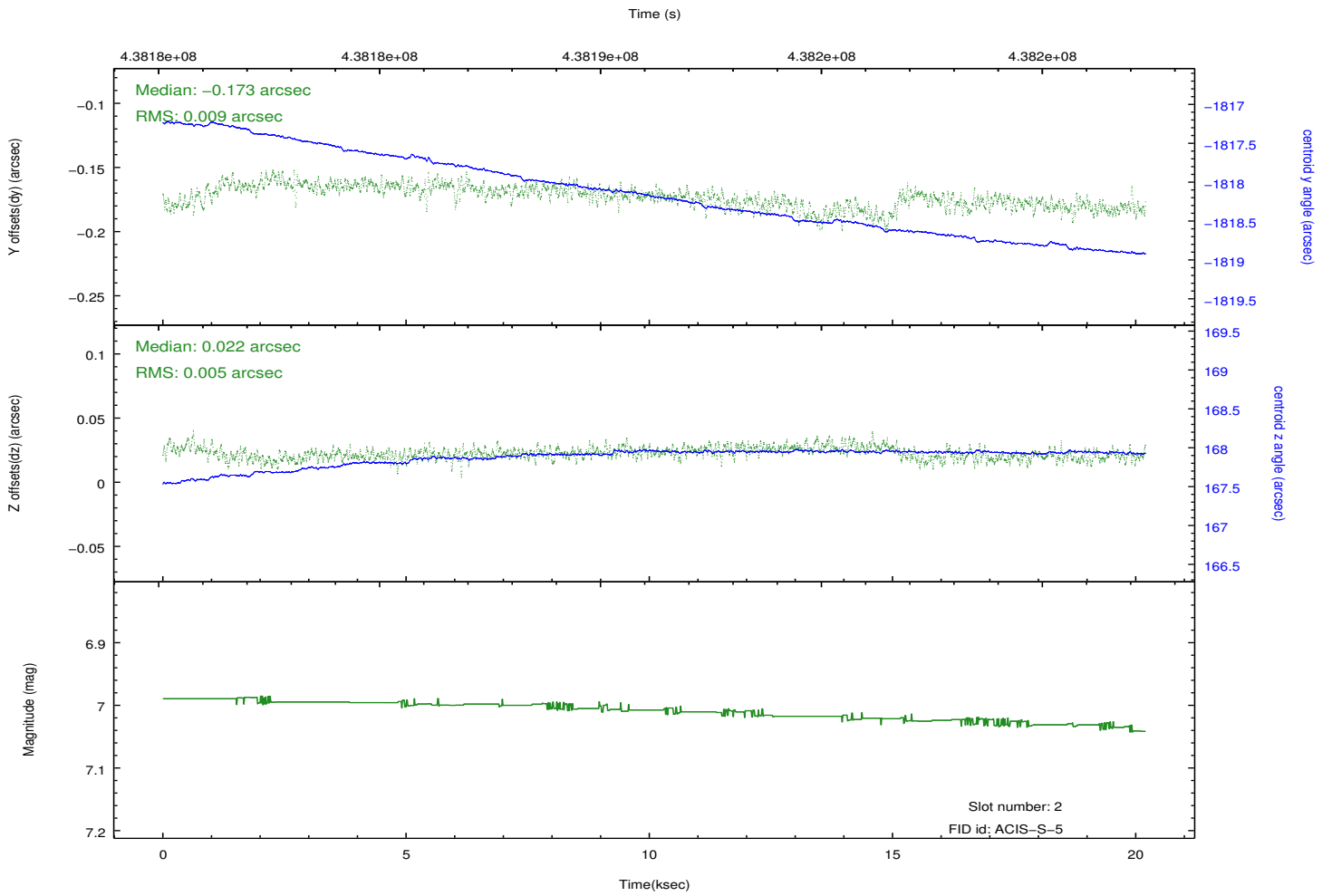
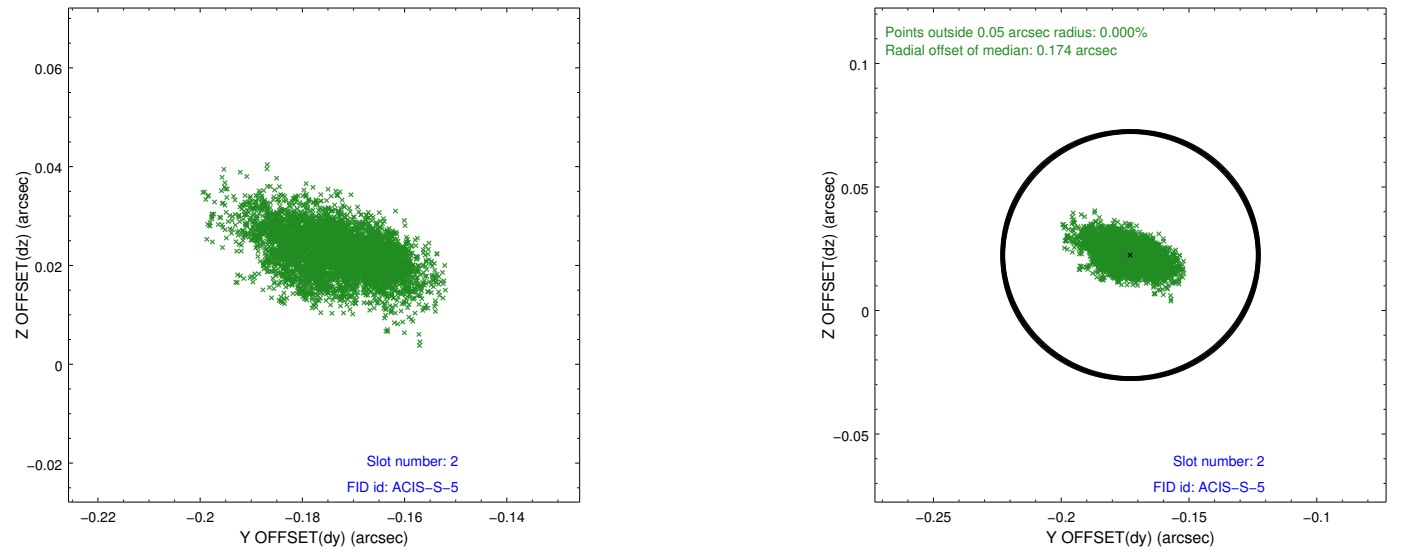
2.5.1 Slot 0



2.5.2 Slot 1



2.5.3 Slot 2



A Summary

A.1 Status

V&V Scientist	Jen Lauer
V&V Date (YYYY-MM-DD)	2012.02.29
V&V Edition	1
V&V Disposition and Status	OK
V&V Charge Time	20.086933605075

A.2 Comments