

V&V Reference Report

L2 ASCDS Version : 8.4.5

Observation 13984 - L2 Version 1
Chandra X-Ray Center

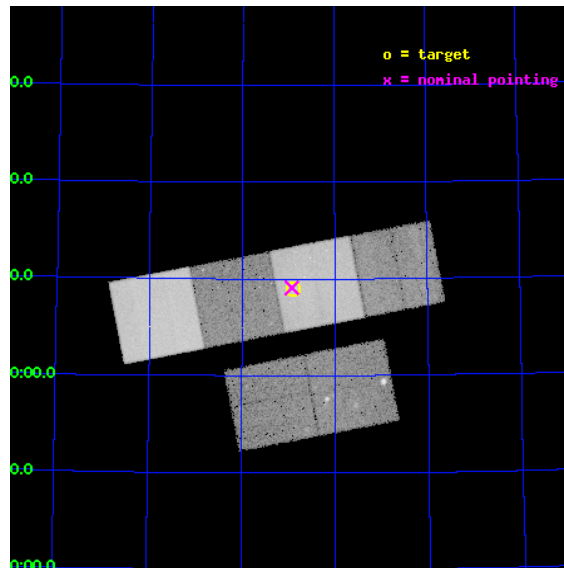
L2 Processing Date : Jul 3 2012

Contents

1	Front	2
2	OBI	3
2.1	OBI	3
2.1.1	Images	3
2.1.2	Bias	3
2.1.3	Parameters	4
2.1.4	Events	4
2.2	Compared Parameters	5
2.3	Aspect	6
2.4	Star Slots	9
2.4.1	Slot 3	9
2.4.2	Slot 4	10
2.4.3	Slot 5	11
2.4.4	Slot 6	12
2.4.5	Slot 7	13
2.5	FID Slots	14
2.5.1	Slot 0	14
2.5.2	Slot 1	15
2.5.3	Slot 2	16
A	Summary	17
A.1	Status	17
A.2	Comments	17

1 Front

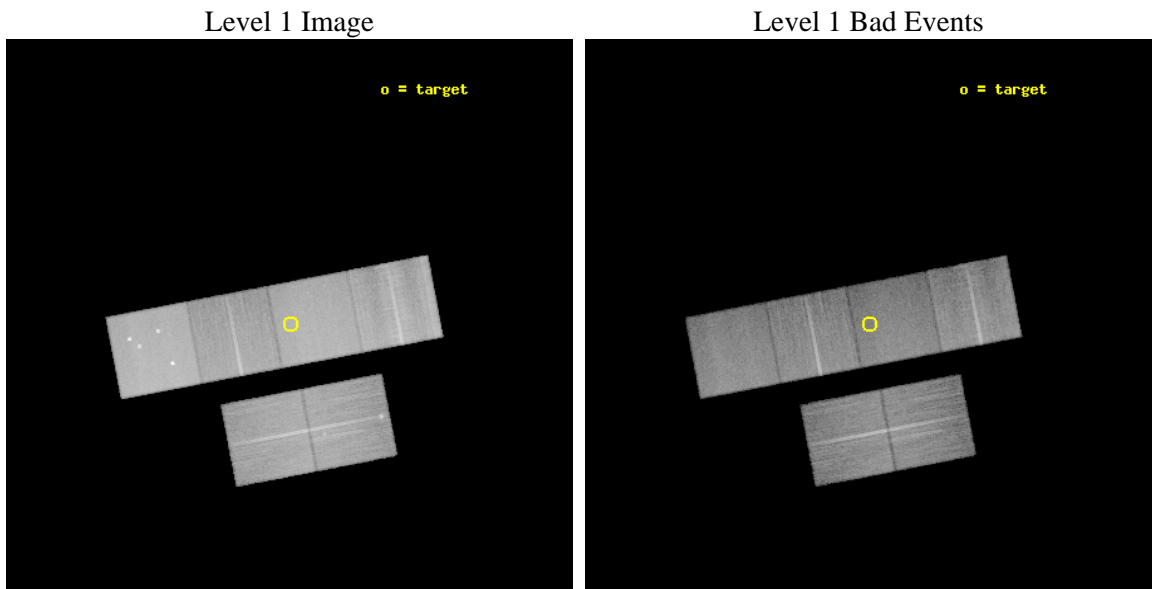
seq_num	801164	Sequence number
obs_id	13984	Observation id
title	The Impact of Brightest Cluster Galaxy Formation on the Intracluster Medium	Proposal title
observer	Dr. John Mulchaey	Principal investigator
object	RXJ0720.8+7109	Source name
dtycycle	0	
cycle	P	events from which exps? Prim/Second/Both
ra_targ	110.225	Observer's specified target RA [deg]
dec_targ	71.149444	Observer's specified target Dec [deg]
ra_nom	110.23141009527	Nominal RA [deg]
dec_nom	71.151648998044	Nominal Dec [deg]
roll_nom	349.15735239206	Nominal Roll [deg]
revision	1	Processing version of data
ontime	38953.599854946	Sum of GTIs [s]
livetime	38460.345918541	Livetime [s]
ontime2	38953.599854946	Sum of GTIs [s]
ontime3	38953.599854946	Sum of GTIs [s]
ontime5	38953.599854946	Sum of GTIs [s]
ontime6	38953.599854946	Sum of GTIs [s]
ontime7	38953.599854946	Sum of GTIs [s]
ontime8	38953.599854946	Sum of GTIs [s]
l2events	400296	Number of level 2 events



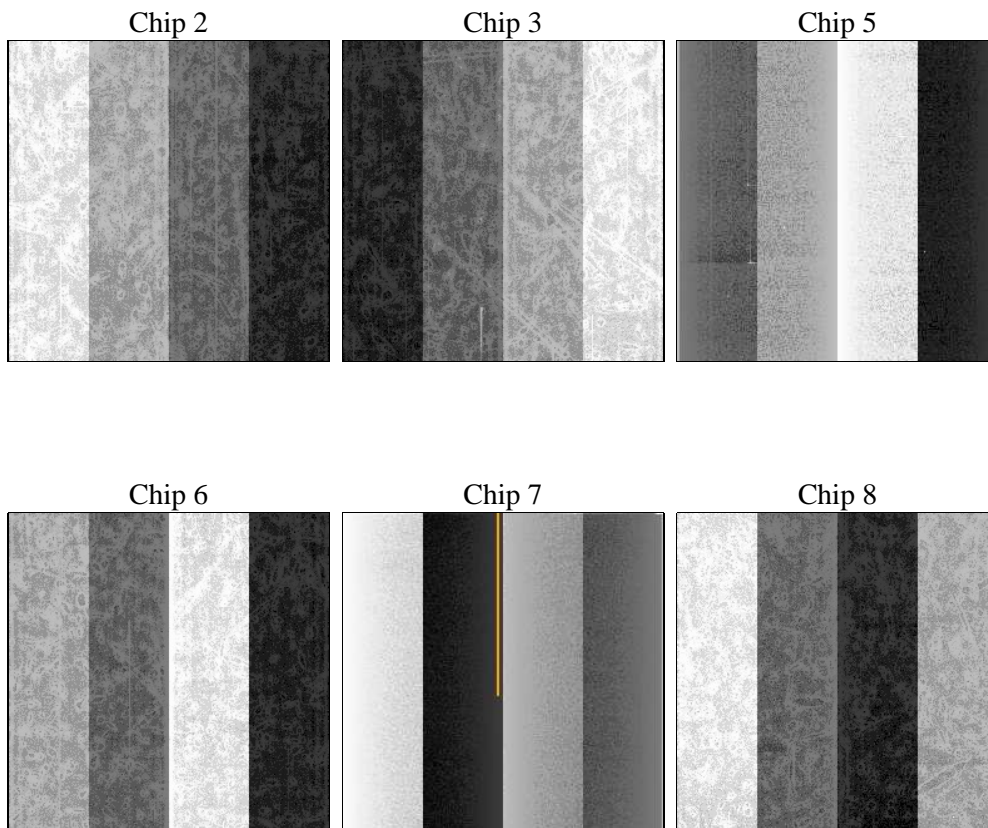
2 OBI

2.1 OBI

2.1.1 Images



2.1.2 Bias



2.1.3 Parameters

obi_num	0	Obi number	sched_exp_time	38988.000000	[s] Scheduled observation exposure time
ascdsver	8.4.5	Processing system revision	ontime	38953.599854946	Sum of GTIs [s]
caldbver	4.5.0	 	ontime2	38953.599854946	Sum of GTIs [s]
date	2012-07-03T05:46:47	Date and time of file creation	ontime3	38953.599854946	Sum of GTIs [s]
revision	1	Processing version of data	ontime5	38953.599854946	Sum of GTIs [s]
			ontime6	38953.599854946	Sum of GTIs [s]
			ontime7	38953.599854946	Sum of GTIs [s]
			ontime8	38953.599854946	Sum of GTIs [s]
			l1events	1635865	Number of level 1 events

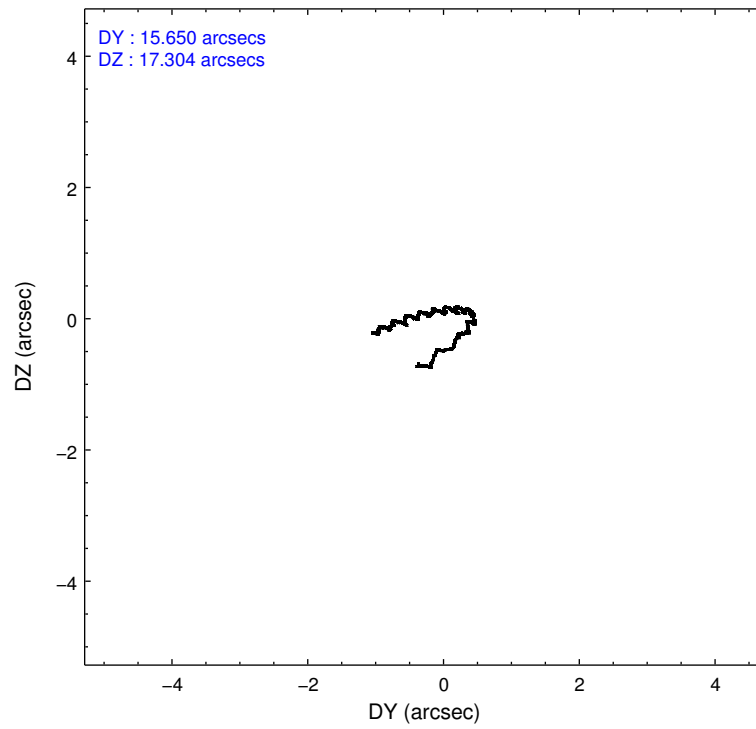
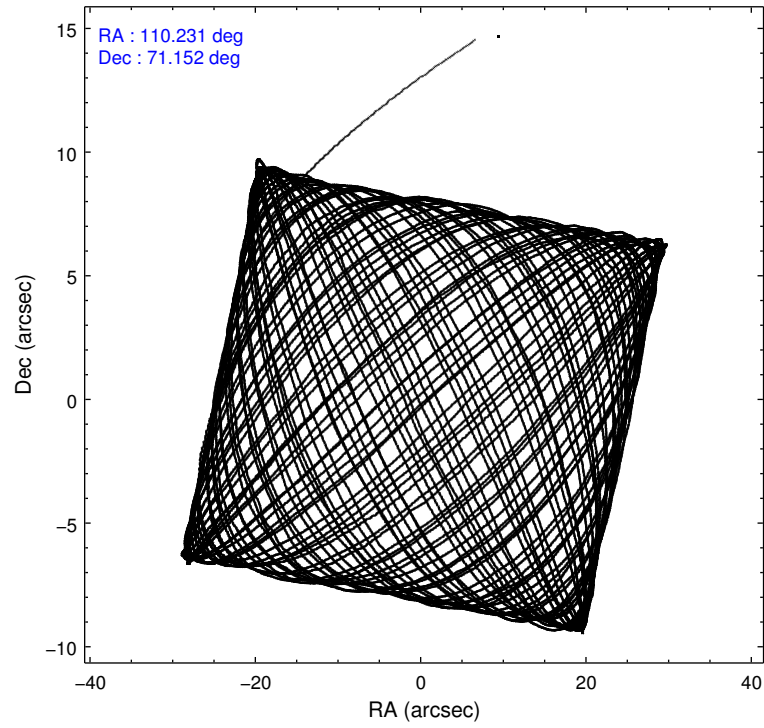
2.1.4 Events

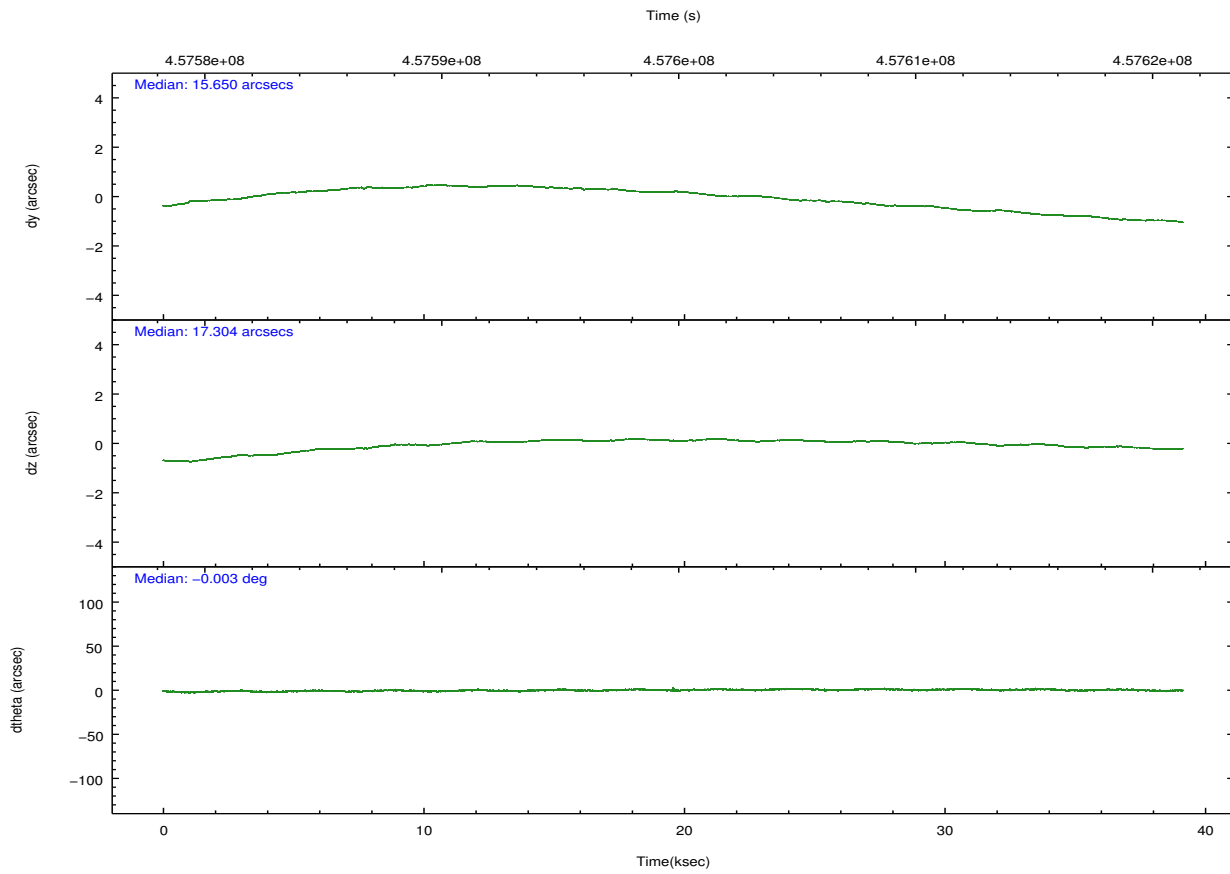
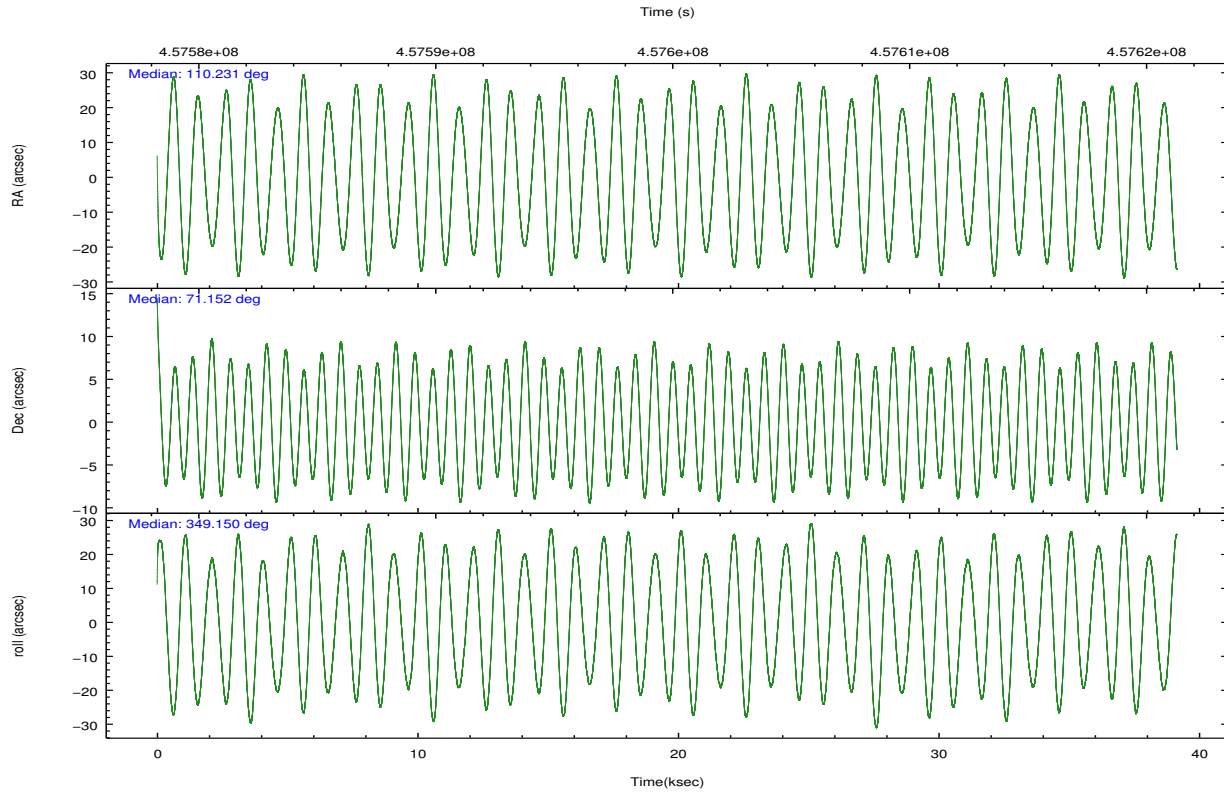
	ccd 2	ccd 3	ccd 5	ccd 6	ccd 7	ccd 8		ccd 2	ccd 3	ccd 5	ccd 6	ccd 7	ccd 8
level 1 events	229733	217600	372526	223330	300021	292655	grade 0 events	9190	10895	25499	9588	12885	24496
rejected events	204060	190540	184337	196162	163375	213655		4%	5%	6%	4%	4%	8%
rejected %	88%	87%	49%	87%	54%	73%	grade 1 events	147	141	641	112	366	234
								0%	0%	0%	0%	0%	0%
							grade 2 events	6418	5626	54135	6014	28099	18002
								2%	2%	14%	2%	9%	6%
							grade 3 events	2575	2690	6740	2724	11770	8286
								1%	1%	1%	1%	3%	2%
							grade 4 events	2566	2717	6687	2663	11550	7864
								1%	1%	1%	1%	3%	2%
							grade 5 events	9539	11069	27606	10786	30303	15996
								4%	5%	7%	4%	10%	5%
							grade 6 events	4932	5133	95162	6181	72366	20359
								2%	2%	25%	2%	24%	6%
							grade 7 events	194366	179329	156056	185262	132682	197418
								84%	82%	41%	82%	44%	67%

2.2 Compared Parameters

Parameter	Planned	Actual	Parameter	Planned	Actual
Instrument	ACIS	ACIS	Obspar format version number	7	7
Detector	ACIS-235678	ACIS-235678	Obspar file type	PREDICTED	ACTUAL
Grating	NONE	NONE	Obspar update status	NONE	UPDATED
Data mode	VFAINT	VFAINT	CCD I0 on	N	N
Observation mode	POINTING	POINTING	CCD I1 on	N	N
[deg] Pointing RA	110.151894	110.2314100952675	CCD I2 on	O3	Y
[deg] Pointing Dec	71.142290	71.15164899804354	CCD I3 on	O4	Y
[deg] Pointing Roll	349.075968	349.1573523920644	CCD S0 on	N	N
[mm] SIM focus pos	-0.684267	-0.6828225247311905	CCD S1 on	O5	Y
[mm] SIM defocus	0	0.001444936568705701	CCD S2 on	O1	Y
[mm] SIM translation stage pos	-190.132523	-190.1425803651734	CCD S3 on	Y	Y
[mm] SIM translation stage offset	0	0.01005778216563158	CCD S4 on	O2	Y
[s] Observation start time (MET)	457580335.184000	457579345.24374	CCD S5 on	N	N
Observation start date	2012-07-02T01:37:48	2012-07-02T01:22:25	Number of optional ACIS chips dropped	0	0
[s] Observation end time (MET)	457619323.184000	457620143.32092	On-chip summing requested	N	N
Observation end date	2012-07-02T12:27:36	2012-07-02T12:42:23	Subarray requested	NONE	NONE
Read mode	TIMED	TIMED	Alternating exposures requested	N	N
			[s] Primary exposure time	0.000000	3.2

2.3 Aspect



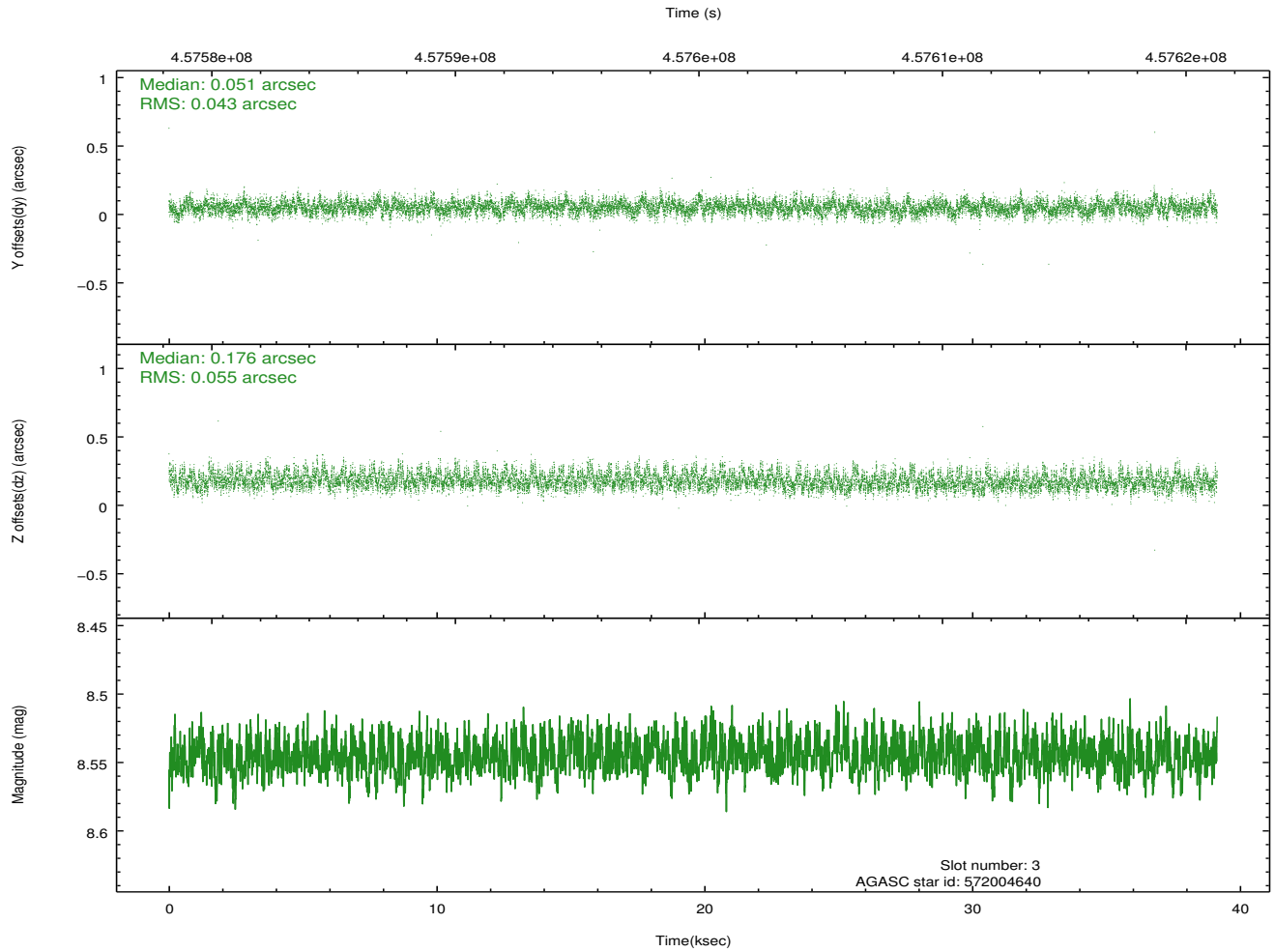
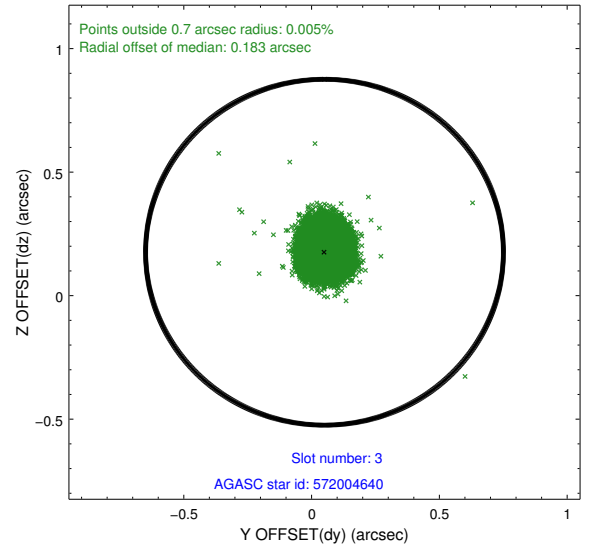
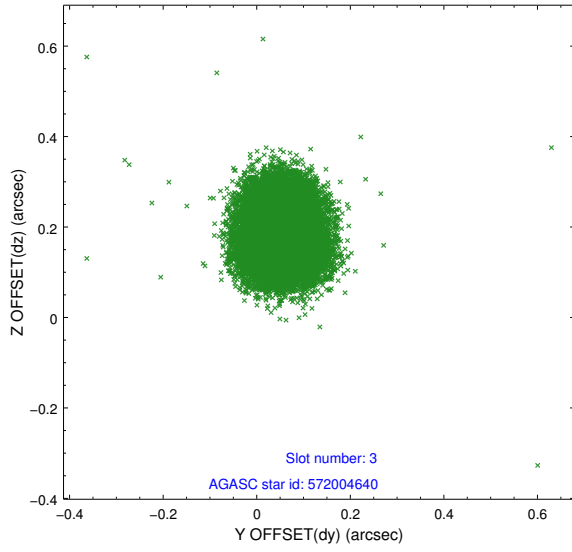


Slot Statistics

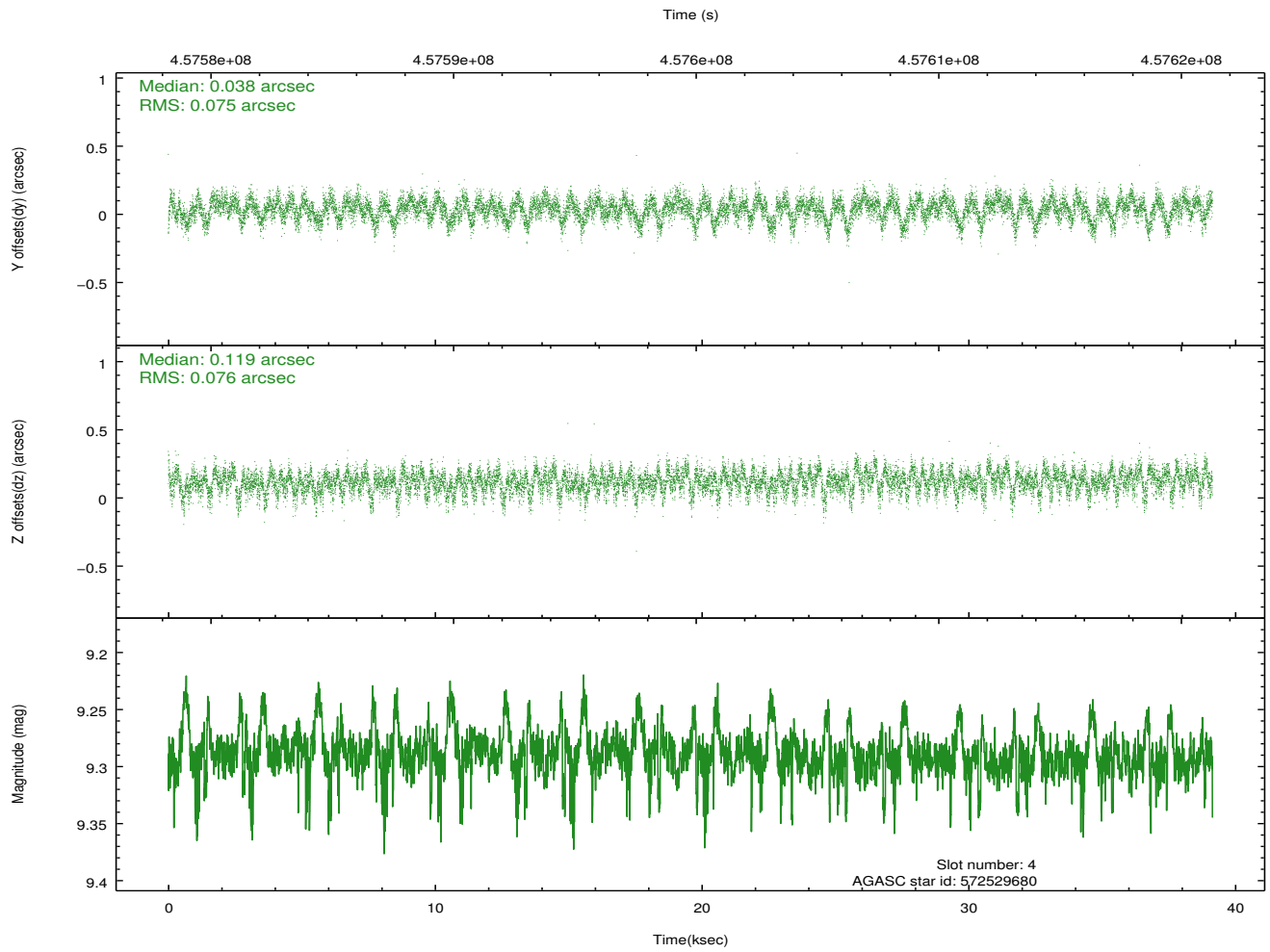
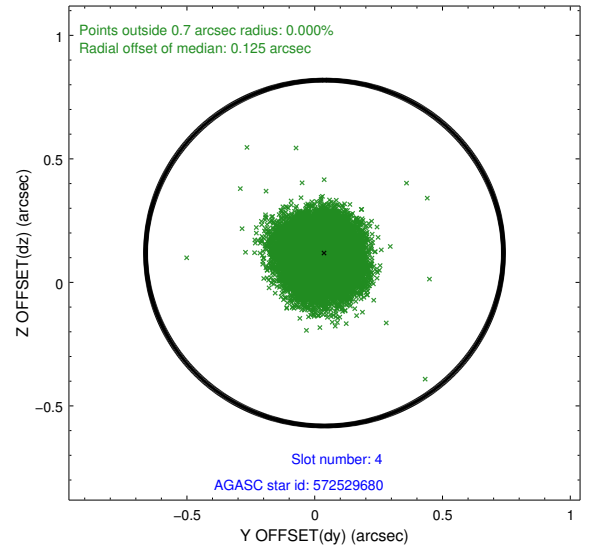
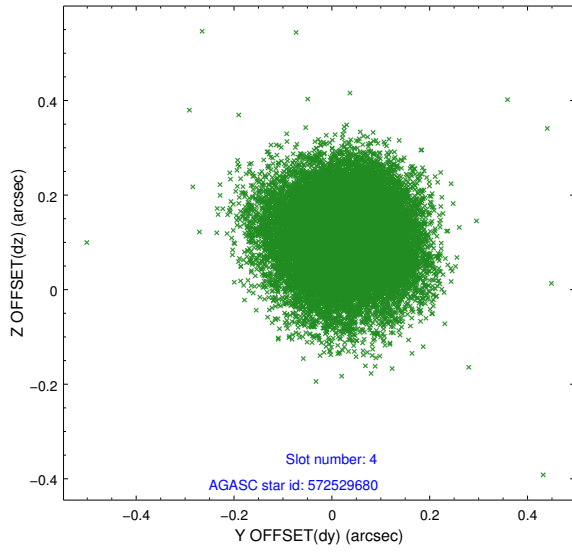
slot	status	id	mag	n_pts	med_dy	med_dz	dr1	dr2	ra	dec	mean_y	mean_z
0	FID	ACIS-S-2	6.90	9545	-0.092	-0.032	0.012	0.021	0.000000	0.000000	-768.67	-1738.63
1	FID	ACIS-S-4	7.00	9546	0.205	0.053	0.018	0.026	0.000000	0.000000	2144.95	169.84
2	FID	ACIS-S-5	7.02	9547	-0.141	-0.011	0.021	0.034	0.000000	0.000000	-1821.49	163.57
3	GUIDE	572004640	8.54	19089	0.051	0.176	0.074	0.121	109.587132	70.919385	-500.59	-910.57
4	GUIDE	572529680	9.29	19067	0.038	0.119	0.115	0.184	109.202854	71.554732	-1344.18	1261.42
5	GUIDE	572531952	8.58	19088	0.018	-0.109	0.093	0.152	110.007920	71.254600	-239.55	365.19
6	GUIDE	572006600	9.00	19076	0.018	-0.071	0.109	0.188	111.768628	70.395093	2422.88	-2245.25
7	GUIDE	572527568	9.06	19010	-0.116	-0.123	0.102	0.166	109.983500	71.809635	-641.20	2322.95

2.4 Star Slots

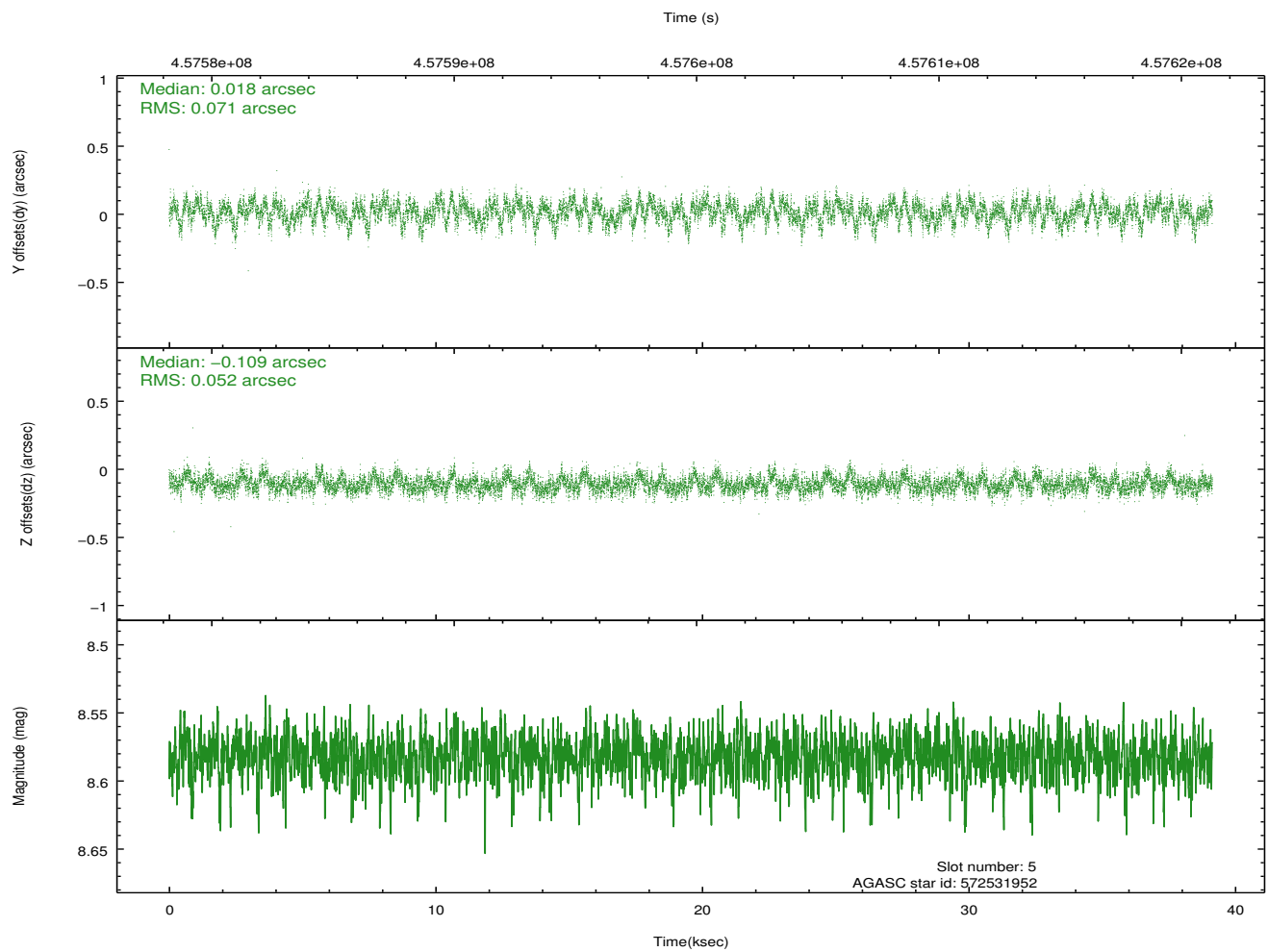
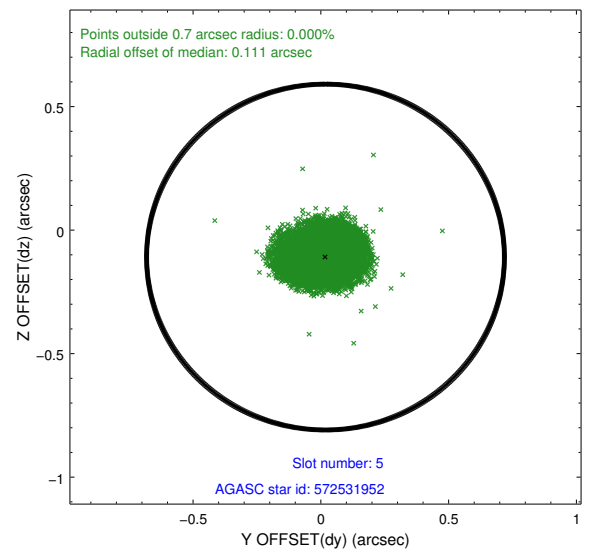
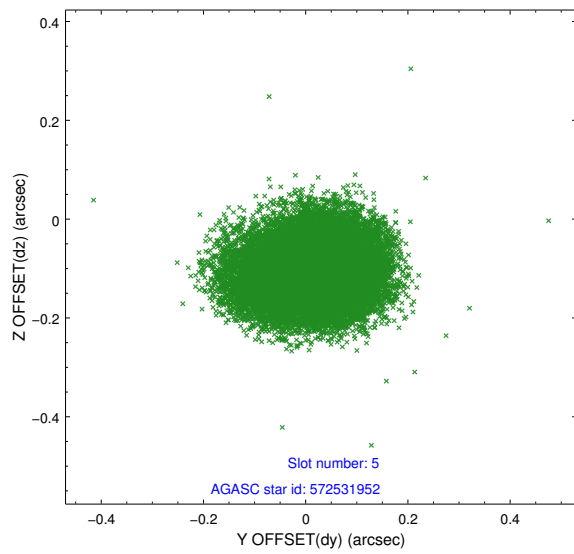
2.4.1 Slot 3



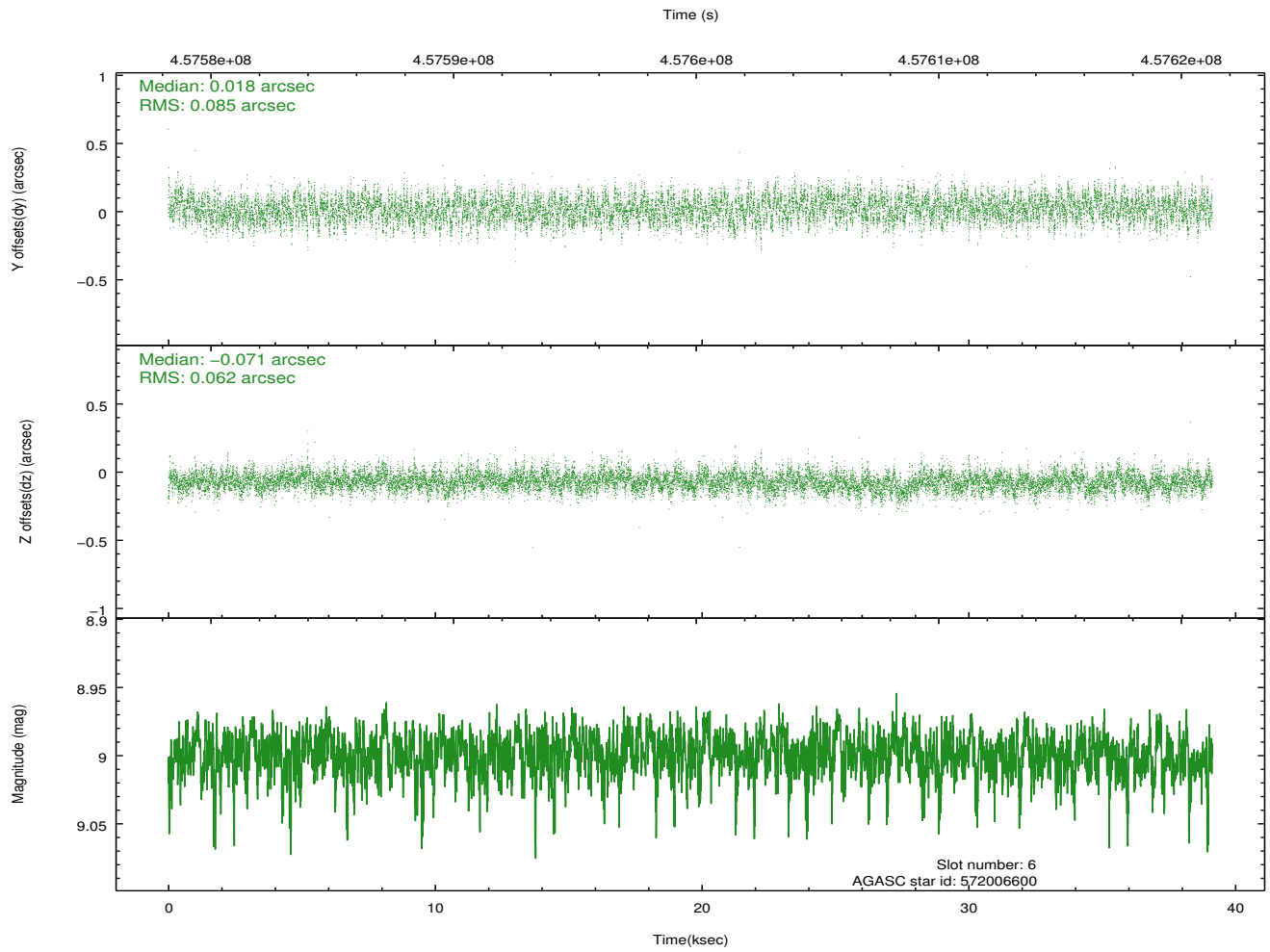
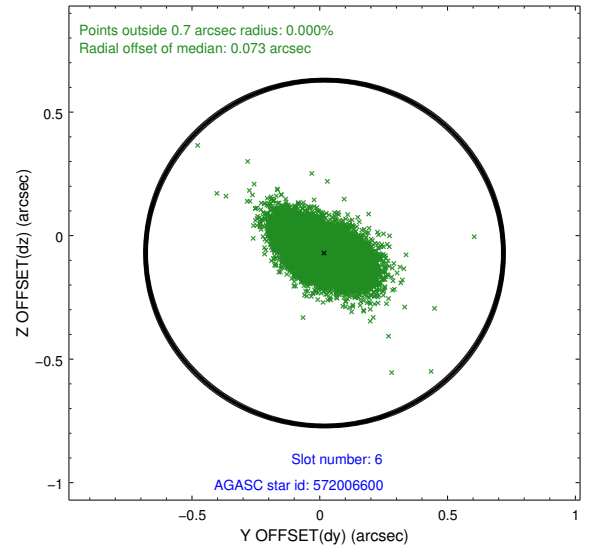
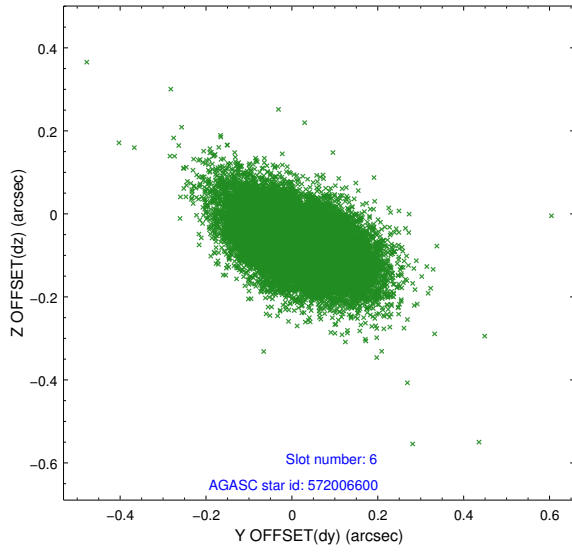
2.4.2 Slot 4



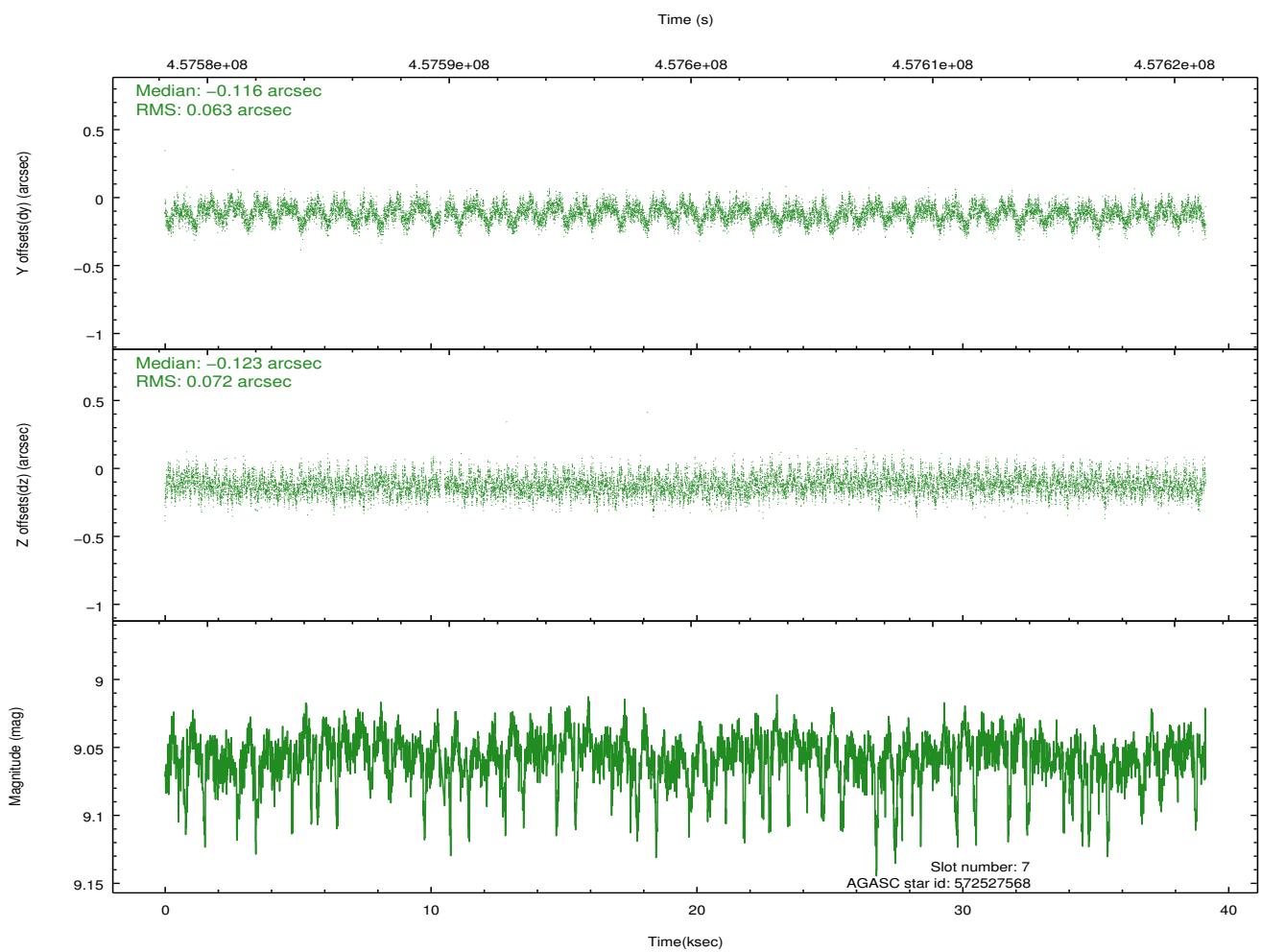
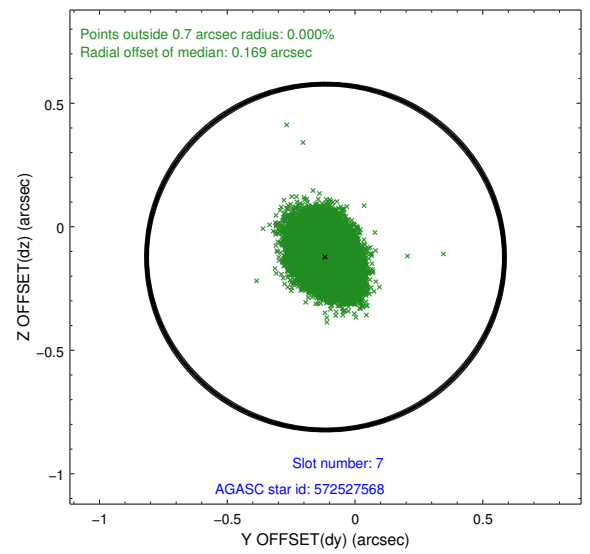
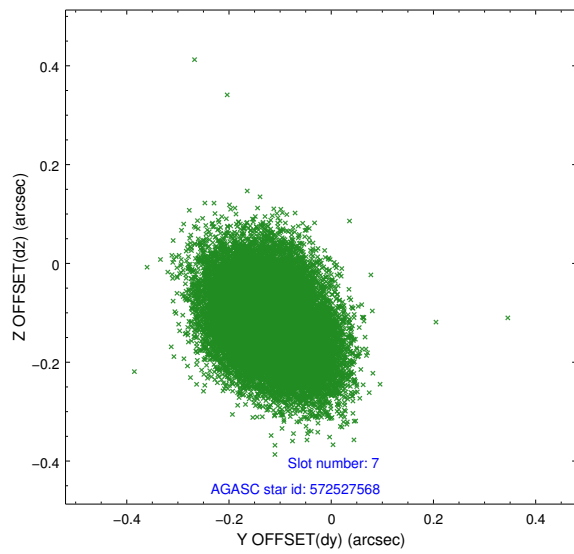
2.4.3 Slot 5



2.4.4 Slot 6

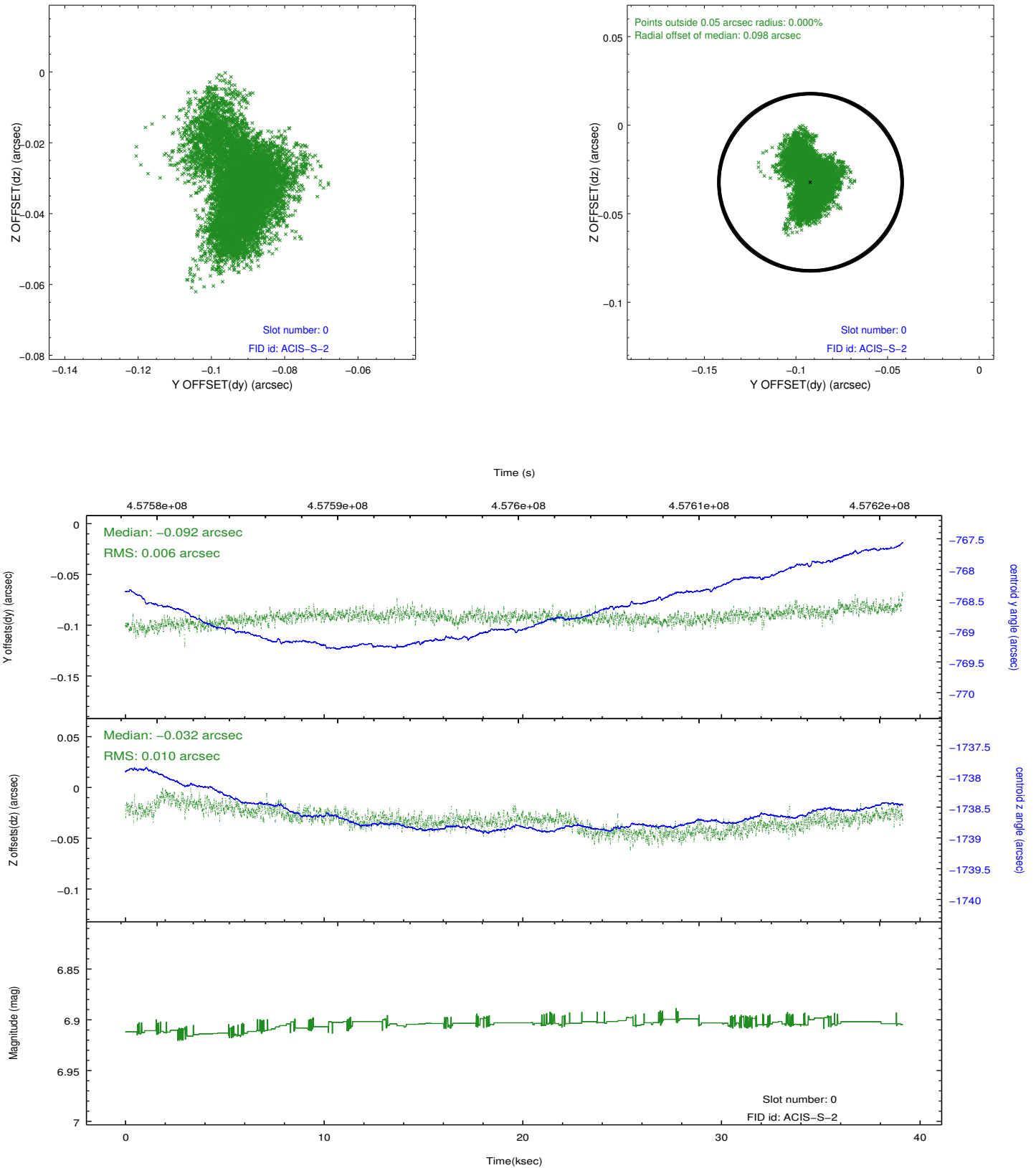


2.4.5 Slot 7

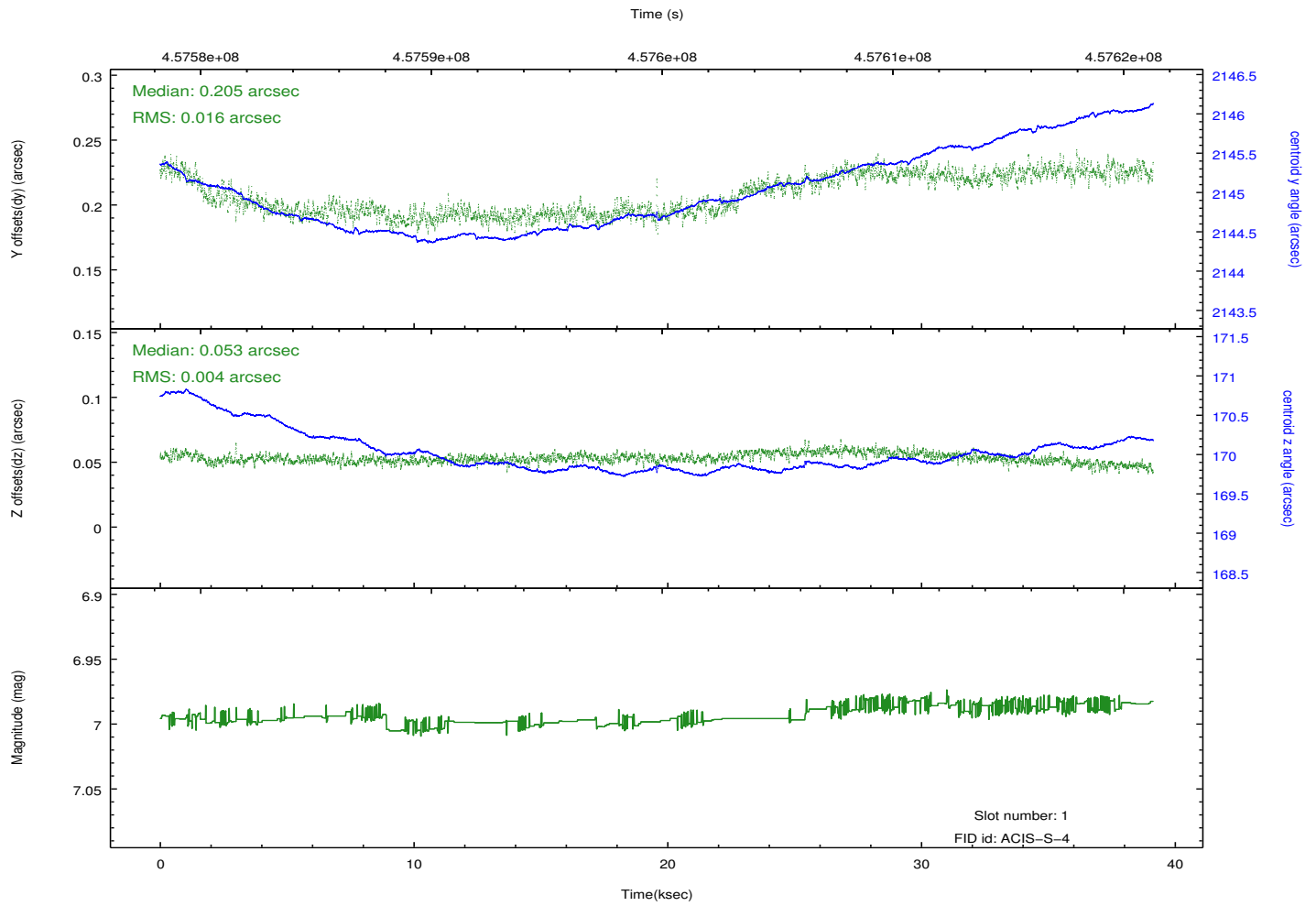
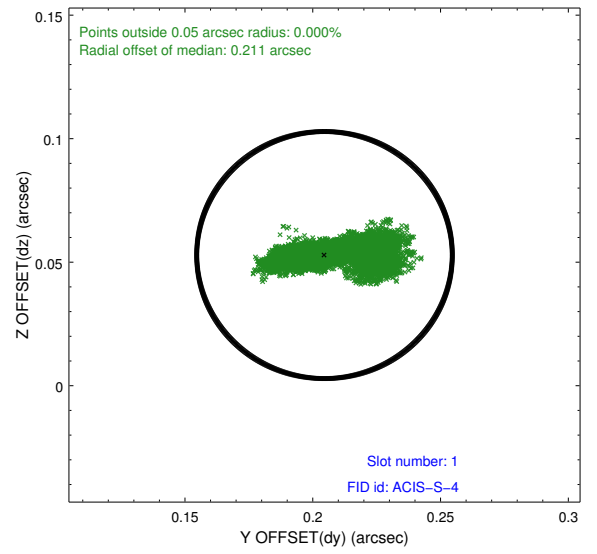
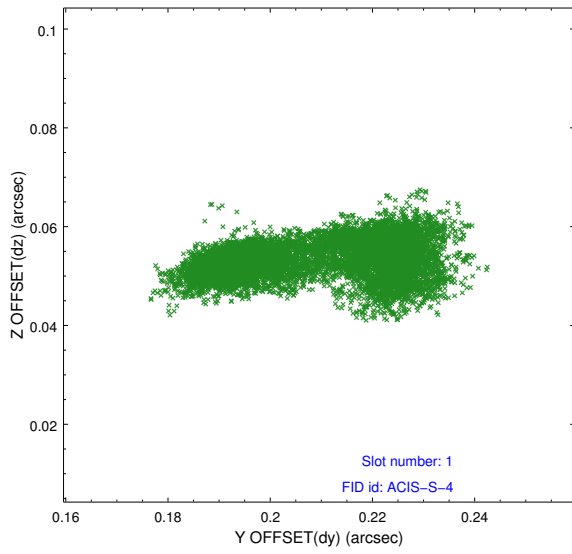


2.5 FID Slots

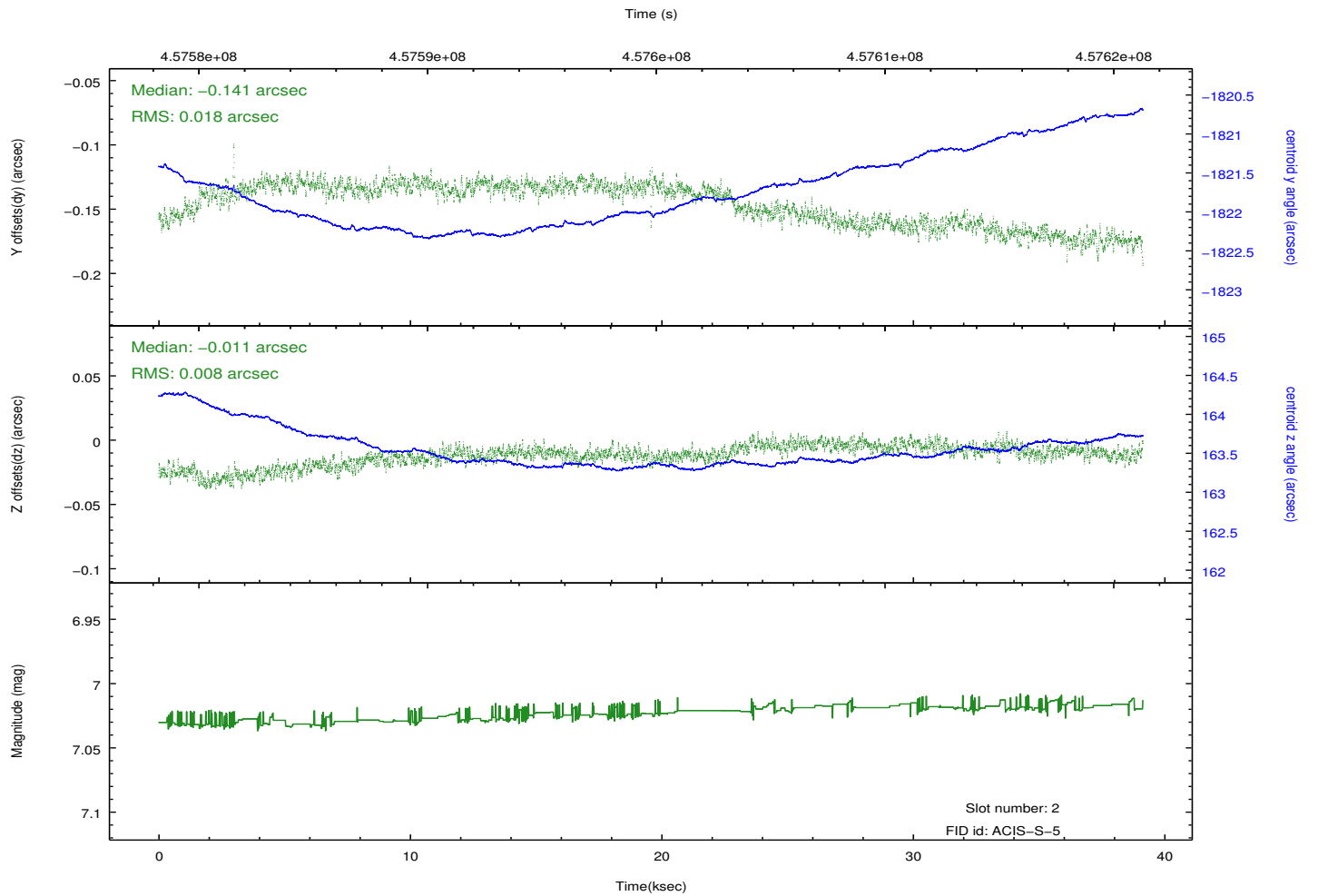
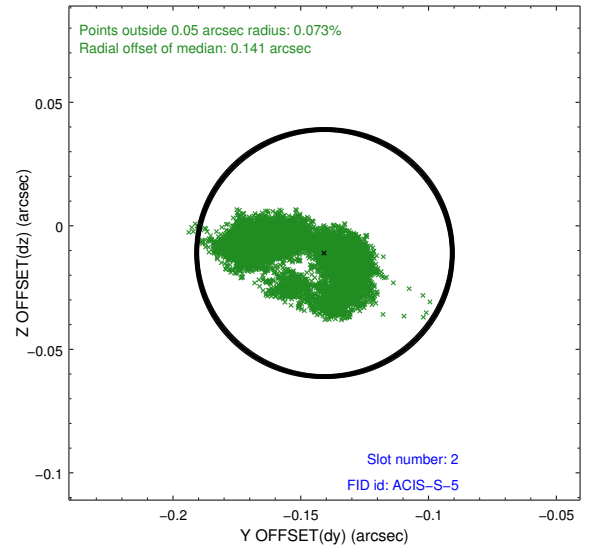
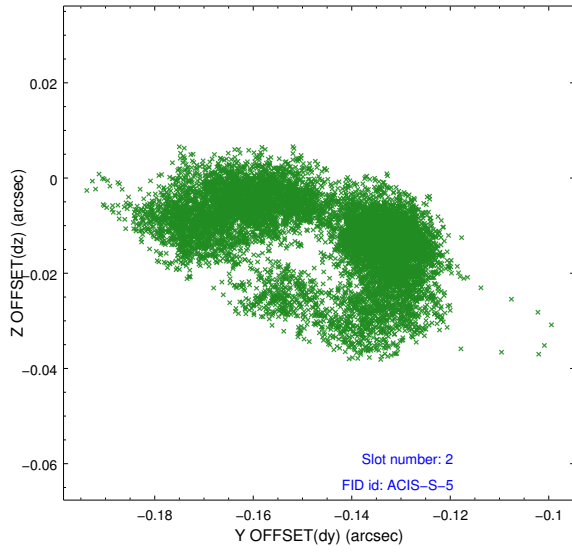
2.5.1 Slot 0



2.5.2 Slot 1



2.5.3 Slot 2



A Summary

A.1 Status

V&V Scientist	Joy Nichols
V&V Date (YYYY-MM-DD)	2012.07.03
V&V Edition	1
V&V Disposition and Status	OK
V&V Charge Time	38.953599854946

A.2 Comments