

V&V Reference Report

L2 ASCDS Version : 8.4.5

Observation 14004 - L2 Version 2
Chandra X-Ray Center

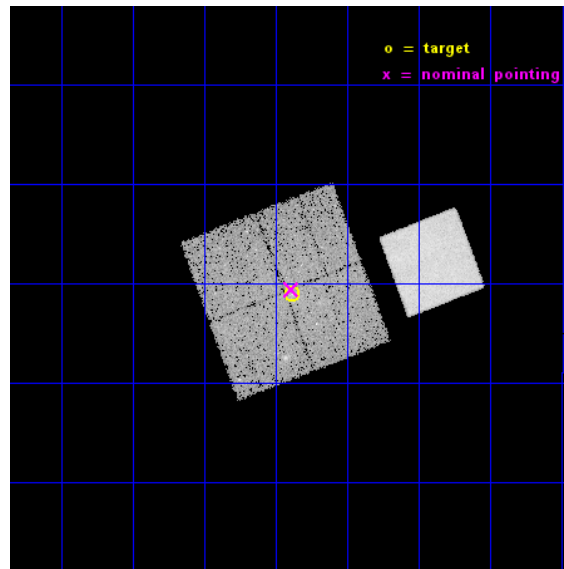
L2 Processing Date : Nov 29 2014

Contents

1	Front	2
2	OBI	3
2.1	OBI	3
2.1.1	Images	3
2.1.2	Bias	3
2.1.3	Parameters	4
2.1.4	Events	4
2.2	Compared Parameters	5
2.3	Aspect	6
2.4	Star Slots	9
2.4.1	Slot 3	9
2.4.2	Slot 4	10
2.4.3	Slot 5	11
2.4.4	Slot 6	12
2.4.5	Slot 7	13
2.5	FID Slots	14
2.5.1	Slot 0	14
2.5.2	Slot 1	15
2.5.3	Slot 2	16
A	Summary	17
A.1	Status	17
A.2	Comments	17

1 Front

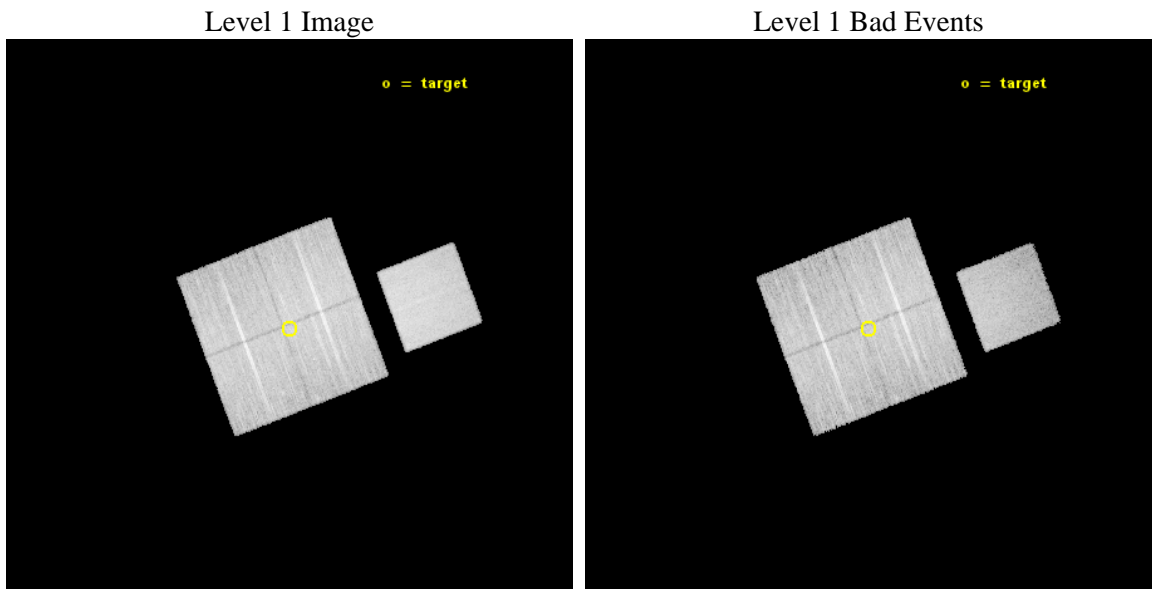
seq_num	801184	Sequence number
obs_id	14004	Observation id
title	GAMA groups and cosmic feedback	Proposal title
observer	Prof Trevor Ponman	Principal investigator
object	G12-36	Source name
dtcycle	0	
cycle	P	events from which exps? Prim/Second/Both
ra_targ	176.097083	Observer's specified target RA [deg]
dec_targ	-1.851278	Observer's specified target Dec [deg]
ra_nom	176.09758910405	Nominal RA [deg]
dec_nom	-1.8432278598665	Nominal Dec [deg]
roll_nom	69.135482843971	Nominal Roll [deg]
revision	2	Processing version of data
ontime	25066.5592224	Sum of GTIs [s]
livetime	24739.046172427	Livetime [s]
ontime0	25066.559232473	Sum of GTIs [s]
ontime1	25066.55922246	Sum of GTIs [s]
ontime2	25069.700192809	Sum of GTIs [s]
ontime3	25066.5592224	Sum of GTIs [s]
ontime7	25069.700192809	Sum of GTIs [s]
l2events	123743	Number of level 2 events



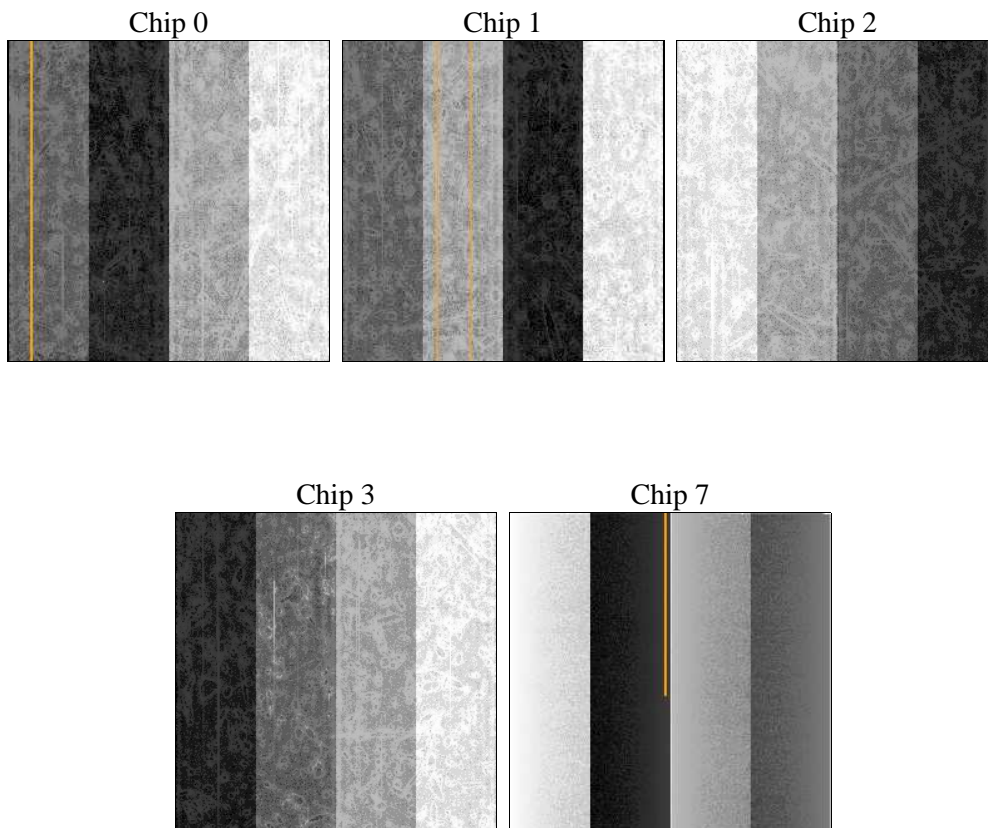
2 OBI

2.1 OBI

2.1.1 Images



2.1.2 Bias



2.1.3 Parameters

obi_num	0	Obi number	sched_exp_time	25000.000000	[s] Scheduled observation exposure time
ascdsver	10.3	Processing system revision	ontime	25066.5592224	Sum of GTIs [s]
caldsver	4.6.4	 	ontime0	25066.559232473	Sum of GTIs [s]
date	2014-11-29T12:04:22	Date and time of file creation	ontime1	25066.55922246	Sum of GTIs [s]
revision	2	Processing version of data	ontime2	25069.700192809	Sum of GTIs [s]
			ontime3	25066.5592224	Sum of GTIs [s]
			ontime7	25069.700192809	Sum of GTIs [s]
			l1events	633773	Number of level 1 events

2.1.4 Events

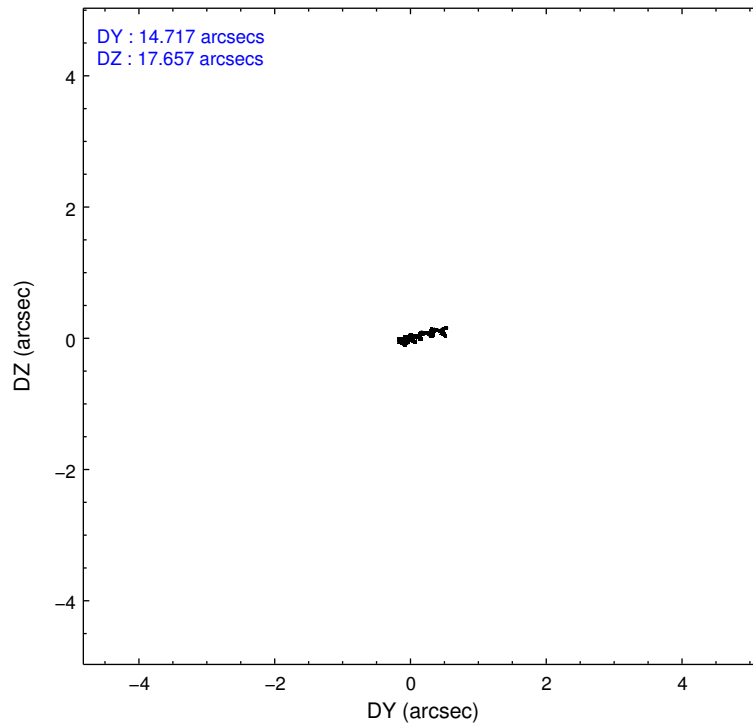
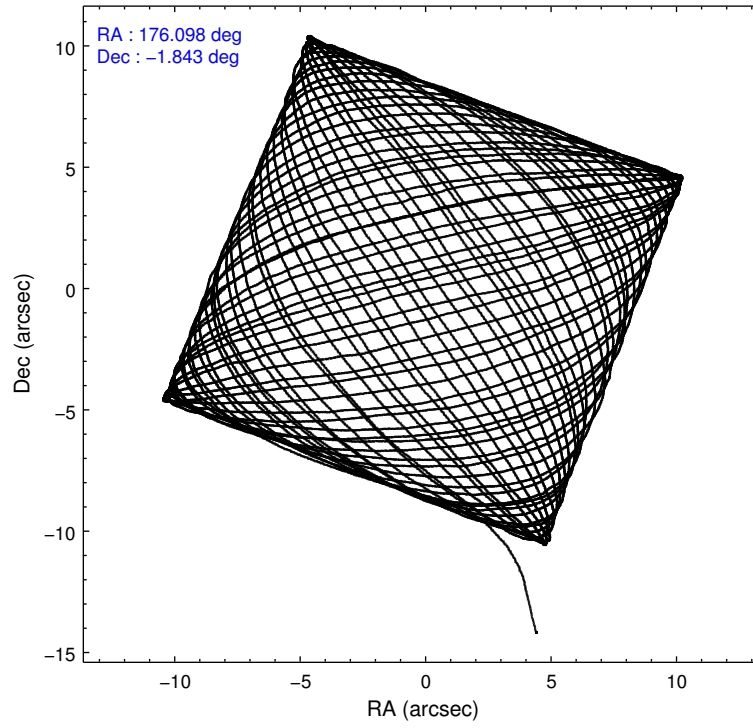
	ccd 0	ccd 1	ccd 2	ccd 3	ccd 7
level 1 events	112691	118180	130353	122203	150346
rejected events	96803	101755	114101	106913	77197
rejected %	85%	86%	87%	87%	51%

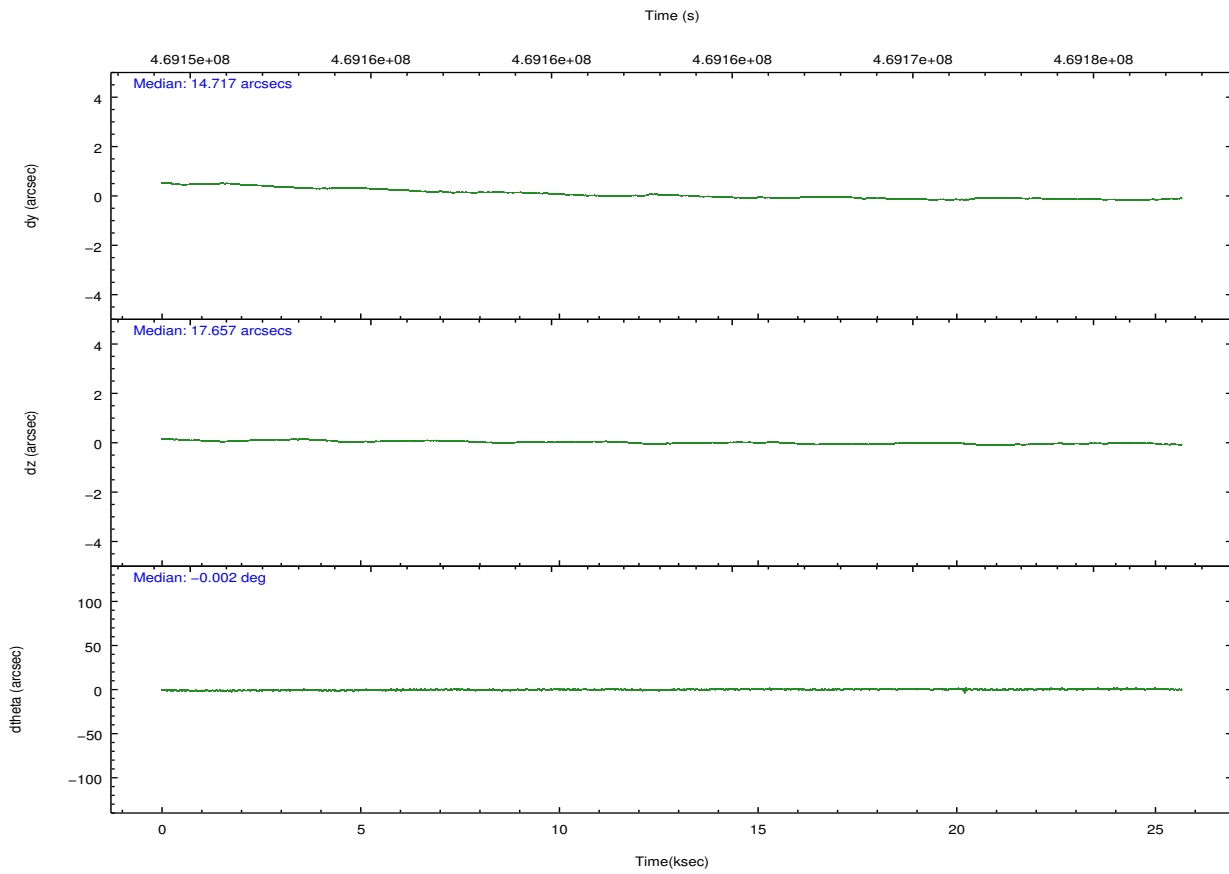
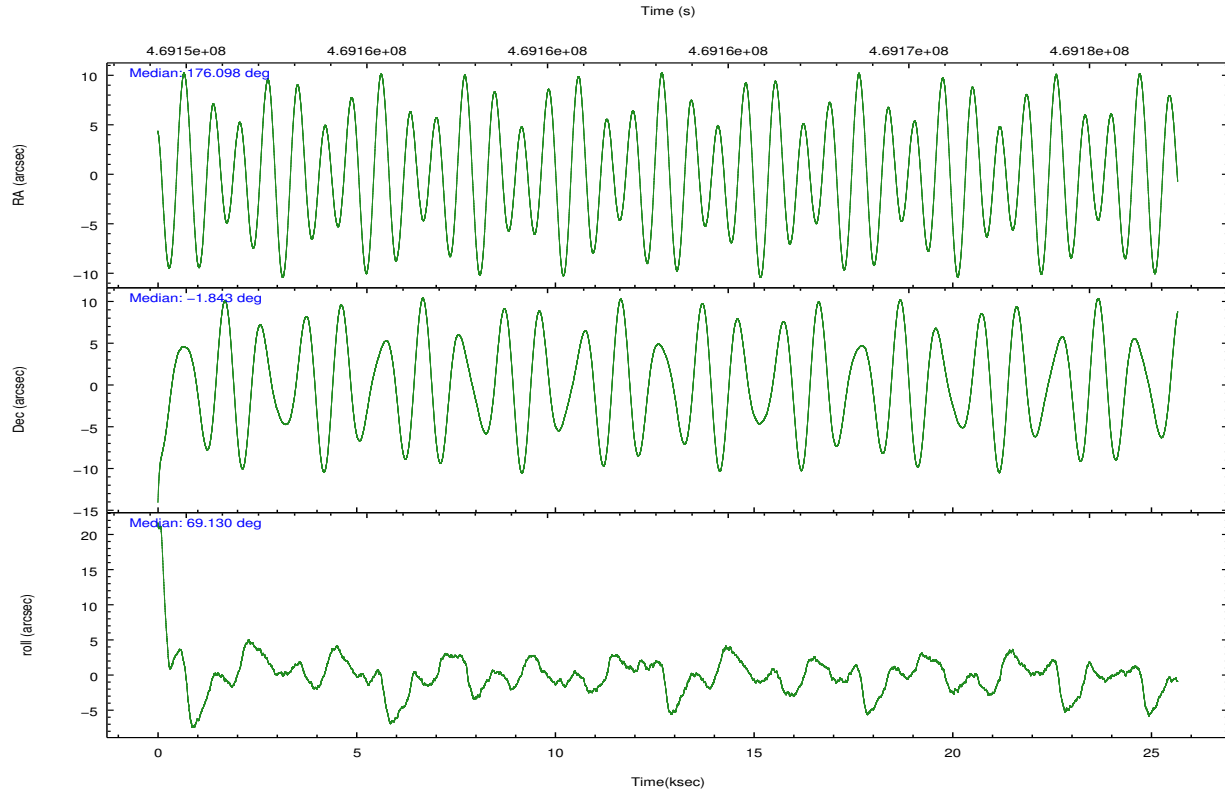
	ccd 0	ccd 1	ccd 2	ccd 3	ccd 7
grade 0 events	6240	6216	6723	6164	7636
	5%	5%	5%	5%	5%
grade 1 events	80	74	81	78	258
	0%	0%	0%	0%	0%
grade 2 events	3733	3709	3759	3296	15898
	3%	3%	2%	2%	10%
grade 3 events	1616	1632	1445	1555	6529
	1%	1%	1%	1%	4%
grade 4 events	1469	1611	1526	1524	6453
	1%	1%	1%	1%	4%
grade 5 events	4987	5206	4611	5586	15788
	4%	4%	3%	4%	10%
grade 6 events	2831	3258	2802	2752	36637
	2%	2%	2%	2%	24%
grade 7 events	91735	96474	109406	101248	61147
	81%	81%	83%	82%	40%

2.2 Compared Parameters

Parameter	Planned	Actual	Parameter	Planned	Actual
Instrument	ACIS	ACIS	Obspar format version number	7	7
Detector	ACIS-01237	ACIS-01237	Obspar file type	PREDICTED	ACTUAL
Grating	NONE	NONE	Obspar update status	NONE	UPDATED
Data mode	VFAINT	VFAINT	CCD I0 on	Y	Y
Observation mode	POINTING	POINTING	CCD I1 on	Y	Y
[deg] Pointing RA	176.102064	176.0975891040539	CCD I2 on	Y	Y
[deg] Pointing Dec	-1.870346	-1.84322785986649	CCD I3 on	Y	Y
[deg] Pointing Roll	68.926947	69.13548284397127	CCD S0 on	N	N
[mm] SIM focus pos	-0.782348	-0.7809083437167272	CCD S1 on	N	N
[mm] SIM defocus	0	0.001439871863259334	CCD S2 on	N	N
[mm] SIM translation stage pos	-233.592463	-233.5874344608287	CCD S3 on	O1	Y
[mm] SIM translation stage offset	0	-0.005018542100998502	CCD S4 on	N	N
[s] Observation start time (MET)	469151155.184000	469149974.31329	CCD S5 on	N	N
Observation start date	2012-11-12T23:44:48	2012-11-12T23:26:14	Number of optional ACIS chips dropped	0	0
[s] Observation end time (MET)	469176155.184000	469176433.15221	On-chip summing requested	N	N
Observation end date	2012-11-13T06:41:28	2012-11-13T06:47:13	Subarray requested	NONE	NONE
Read mode	TIMED	TIMED	Alternating exposures requested	N	N
			[s] Primary exposure time	0.000000	3.1

2.3 Aspect





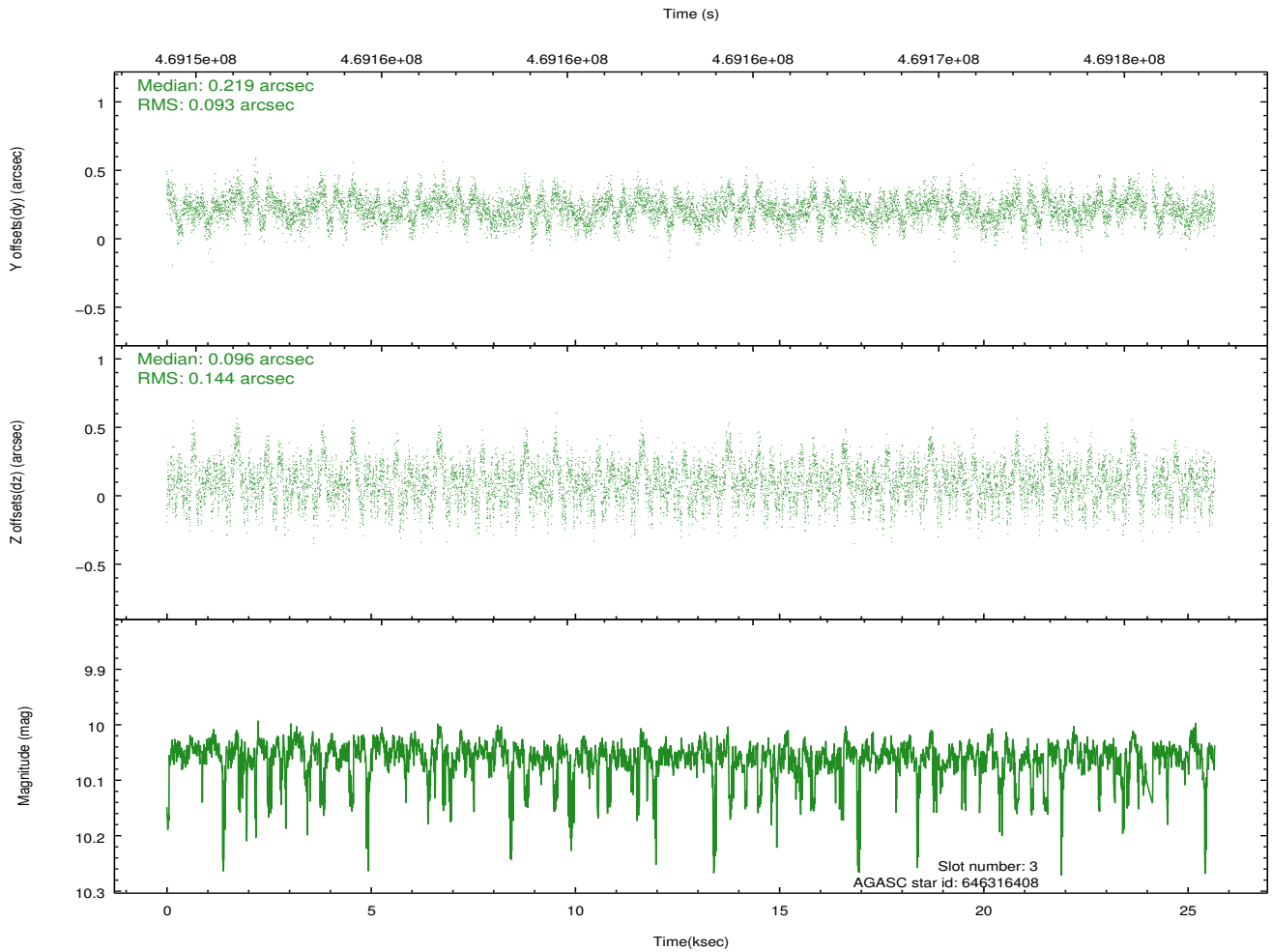
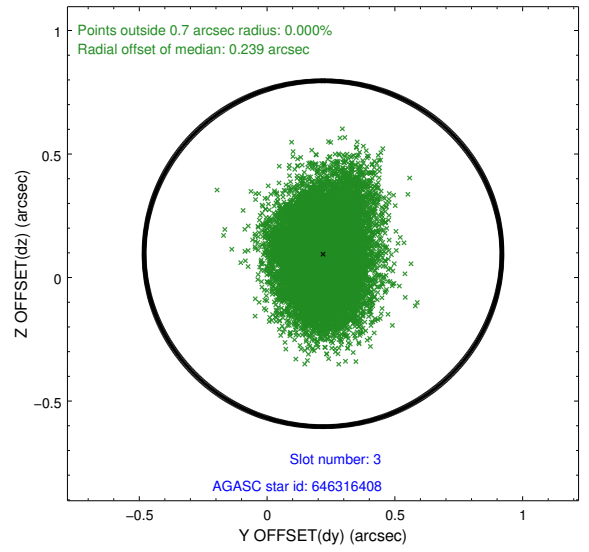
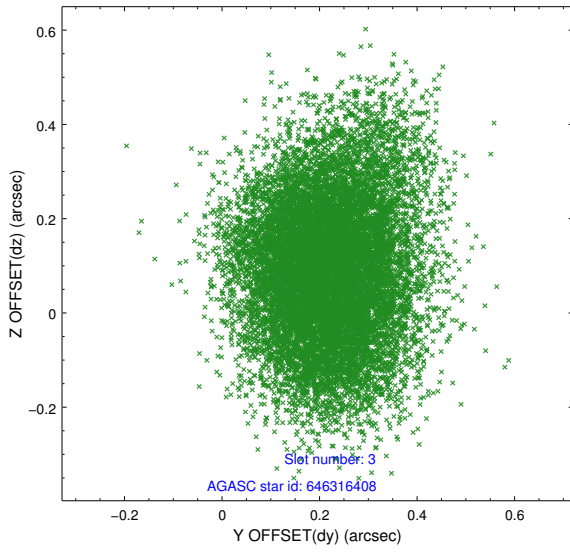
Slot Statistics

slot	status	used	id	mag	n_pts	med_dy	med_dz	dr1	dr2	ra	dec	mean_y	mean_z
0	FID		ACIS-I-1	7.04	6260	0.059	0.008	0.010	0.031	0.000000	0.000000	924.73	-841.33
1	FID		ACIS-I-5	7.04	6260	-0.209	0.071	0.008	0.018	0.000000	0.000000	-1823.57	1056.17
2	FID		ACIS-I-6	7.04	6260	0.059	-0.010	0.008	0.016	0.000000	0.000000	390.17	1700.71
3	GUIDE	used	646316408	10.06	12401	0.219	0.096	0.181	0.301	176.490875	-2.448140	-1437.65	-2052.04
4	GUIDE	used	646316632	8.62	12518	0.056	0.057	0.076	0.120	175.959380	-2.346916	-1785.08	-137.87
5	GUIDE	used	646317744	8.86	12514	-0.083	0.149	0.095	0.153	176.750120	-1.629335	1648.33	-1863.39
6	GUIDE	used	646323360	7.25	12518	-0.442	-0.371	0.078	0.114	176.150253	-1.384836	1693.44	466.48
7	GUIDE	used	646323408	9.56	12487	0.247	0.076	0.119	0.193	176.217373	-2.038376	-414.43	-604.30

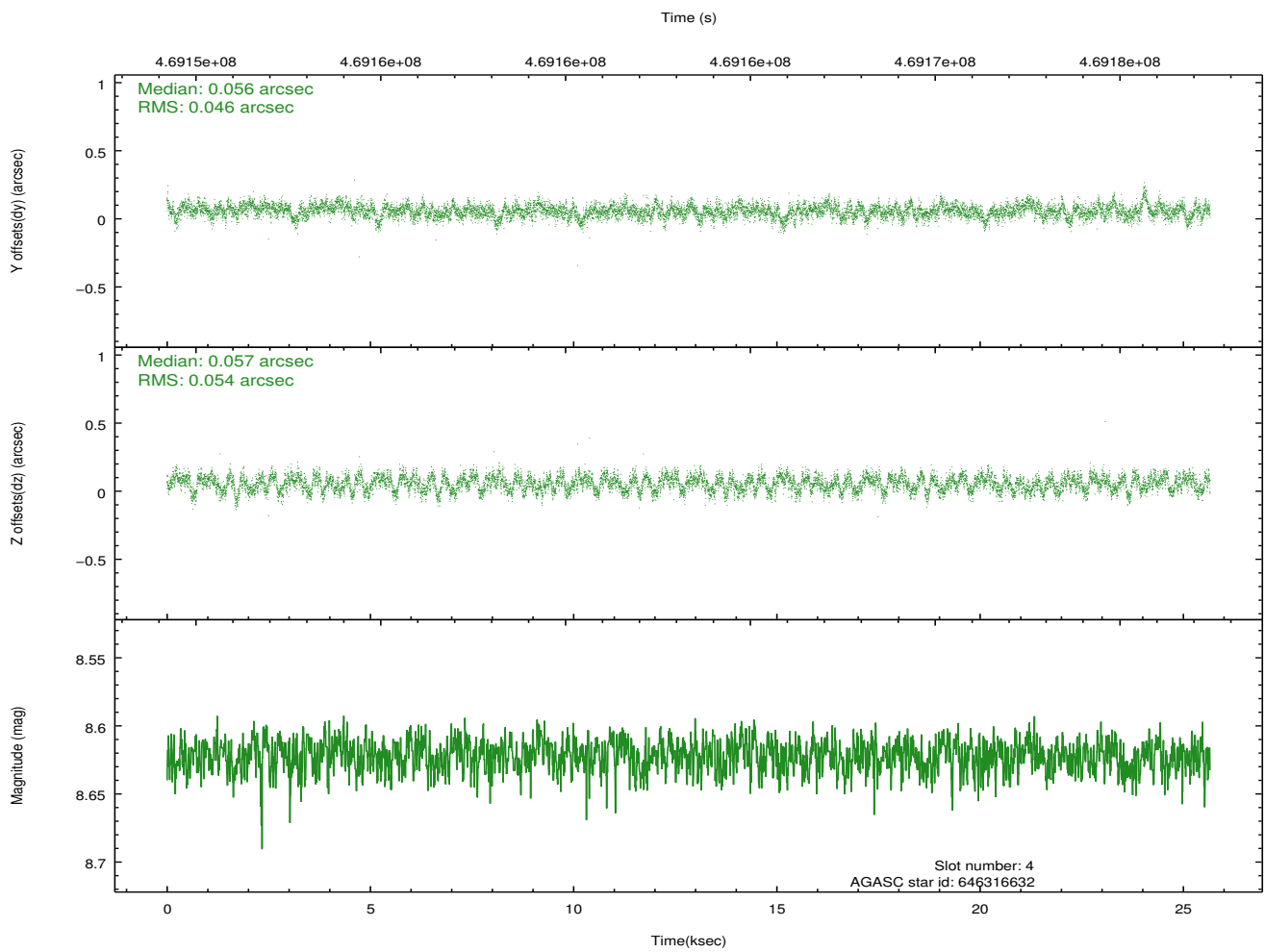
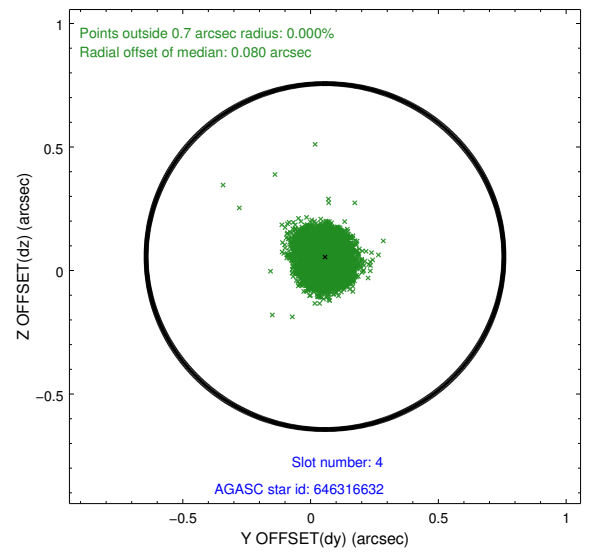
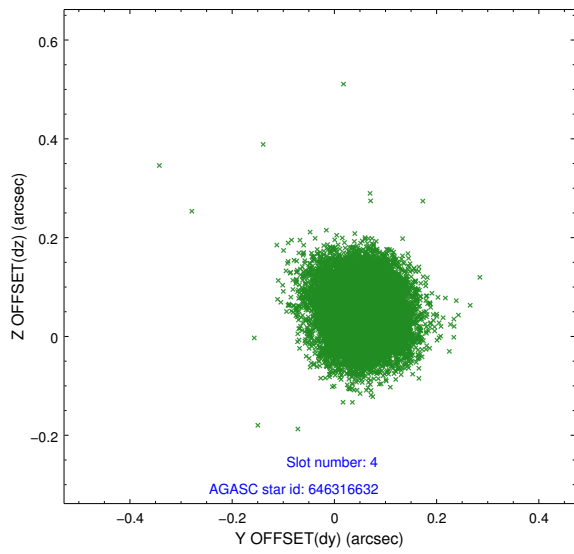
∞

2.4 Star Slots

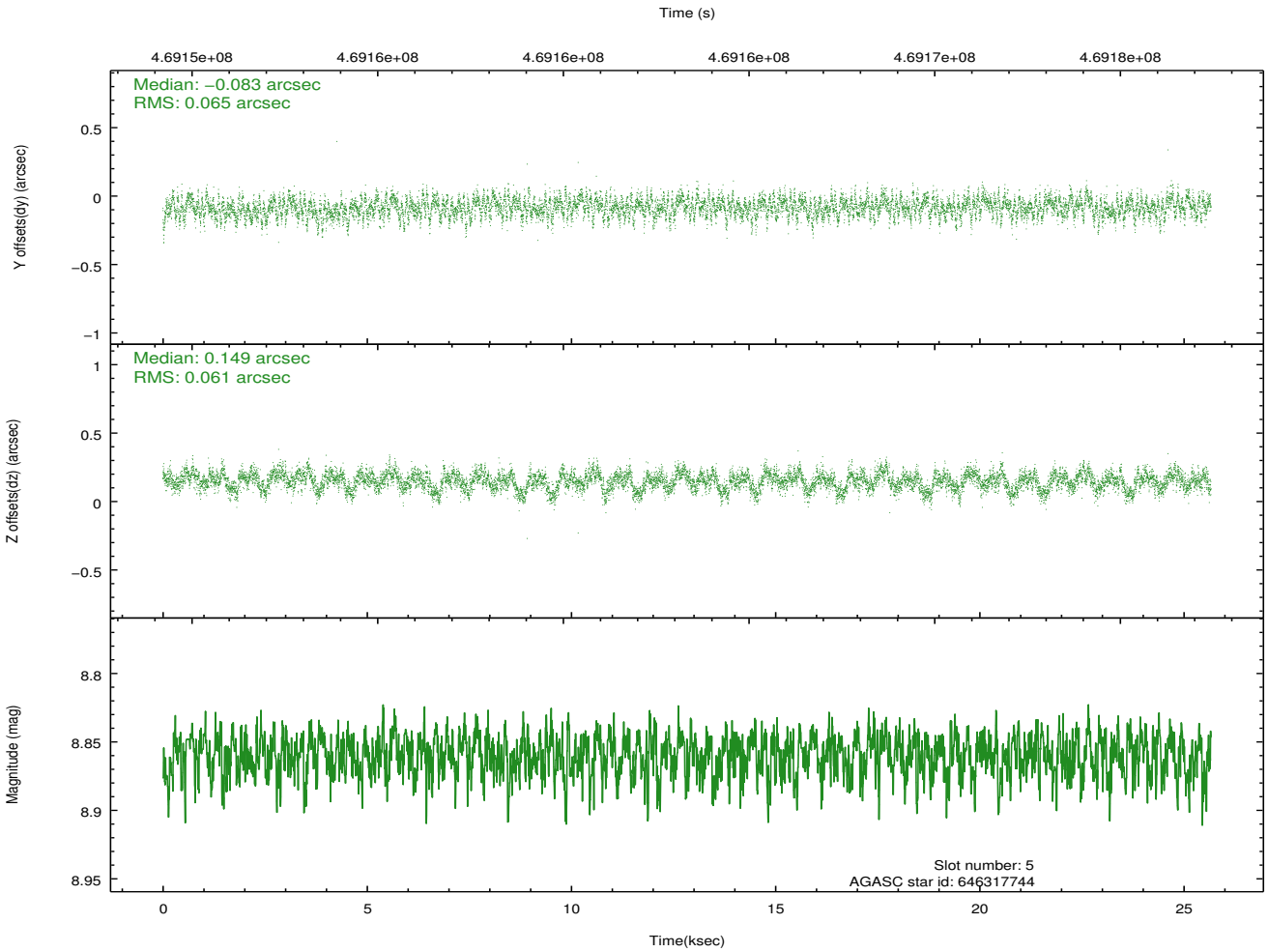
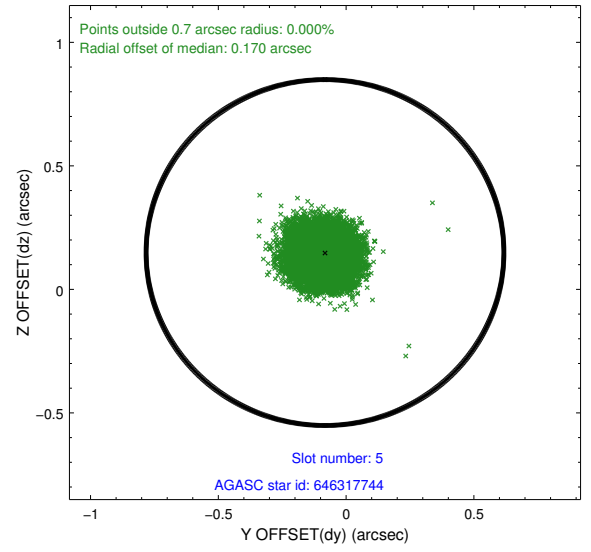
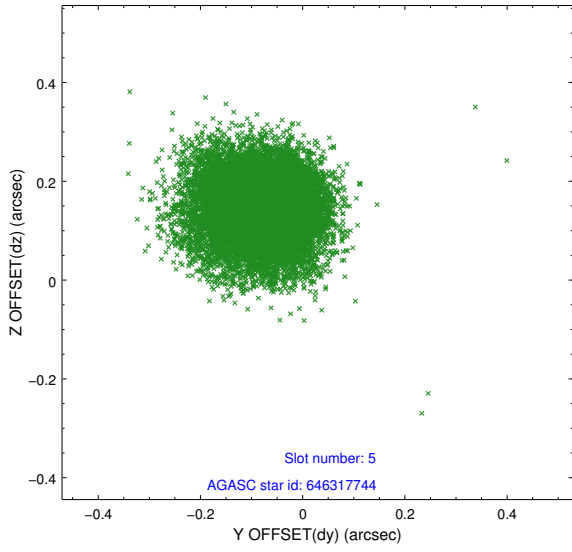
2.4.1 Slot 3



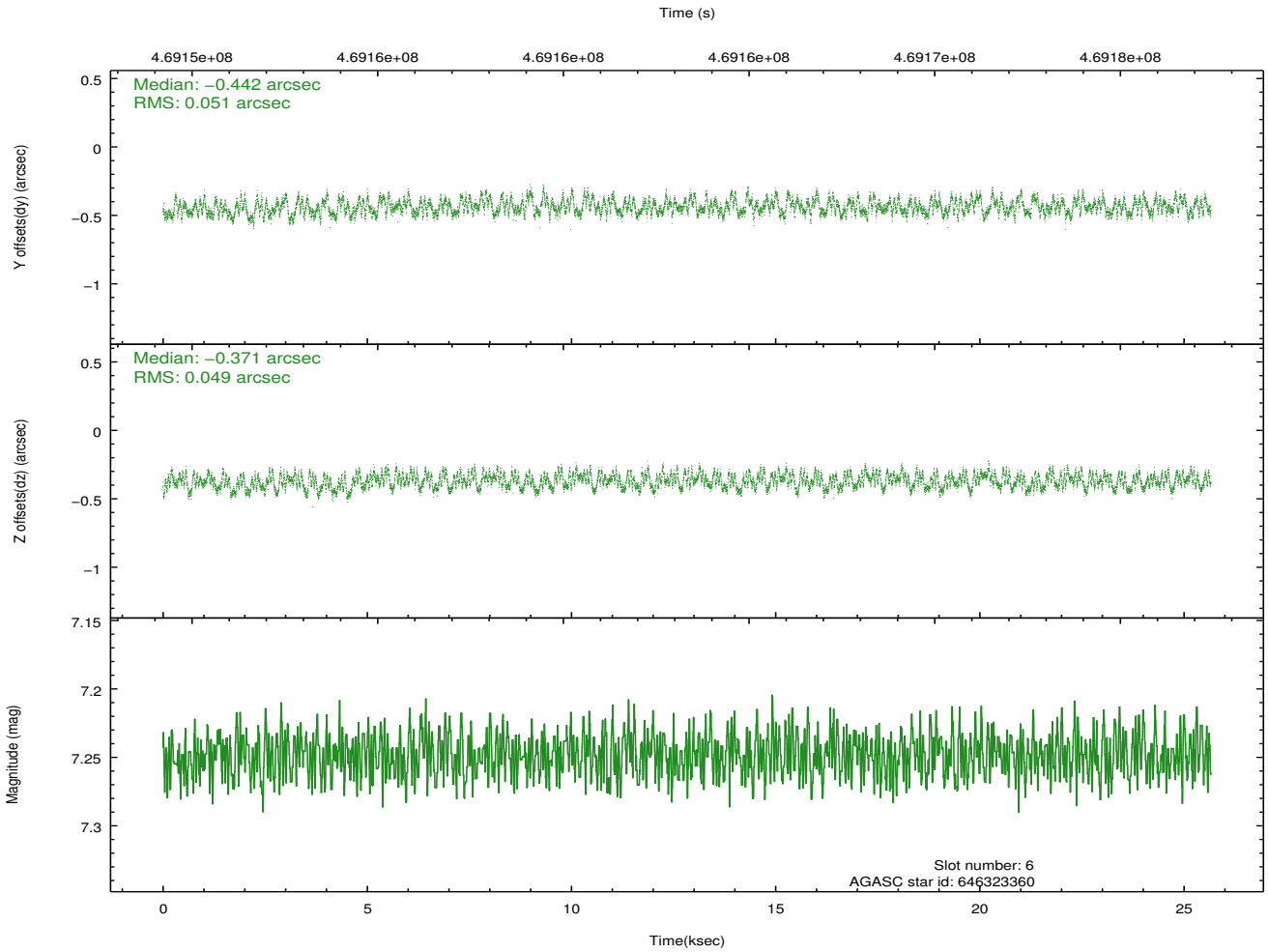
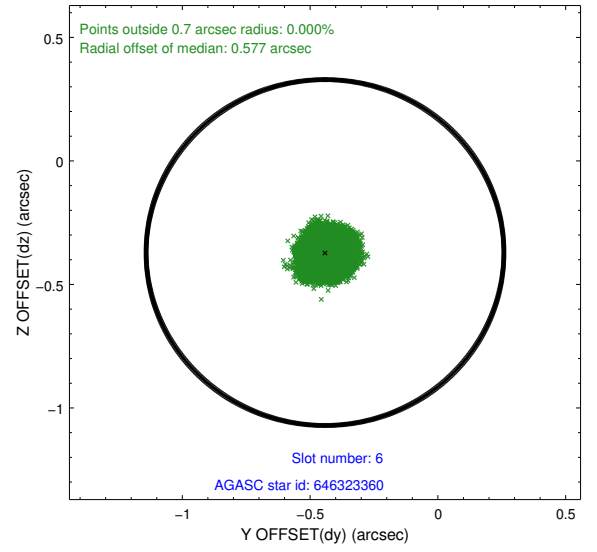
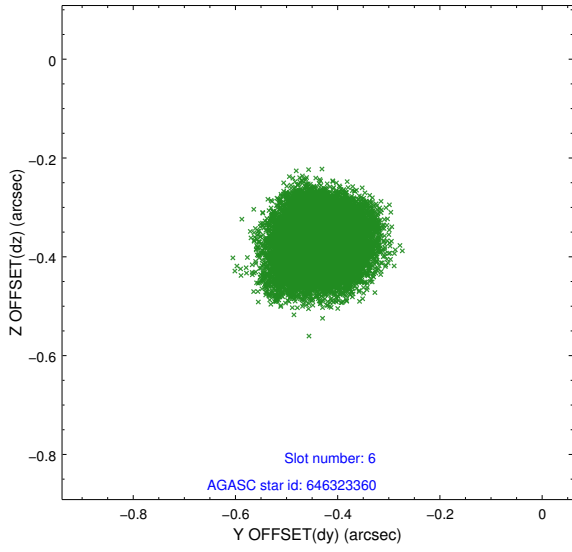
2.4.2 Slot 4



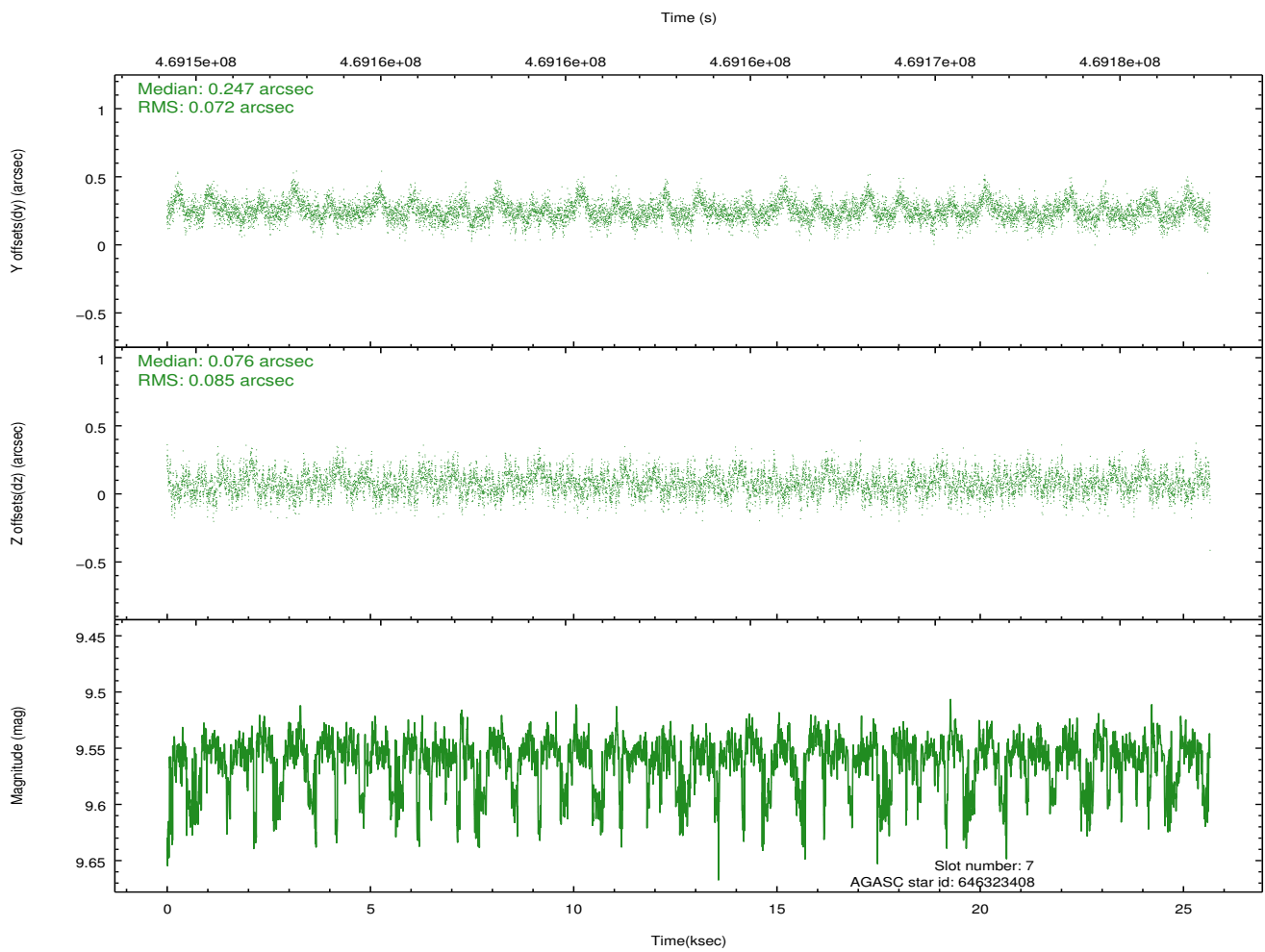
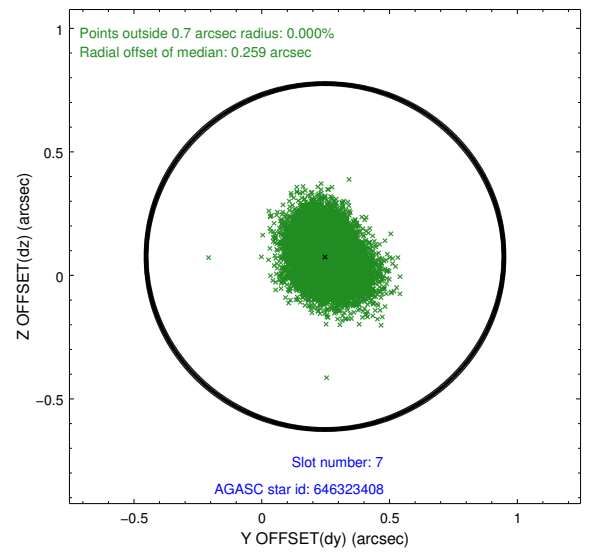
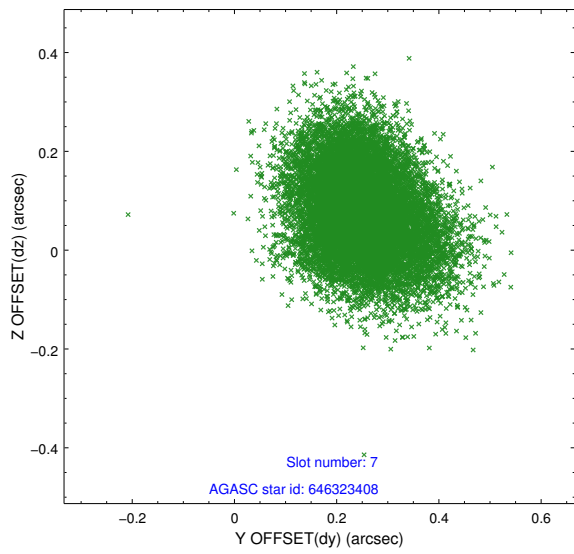
2.4.3 Slot 5



2.4.4 Slot 6

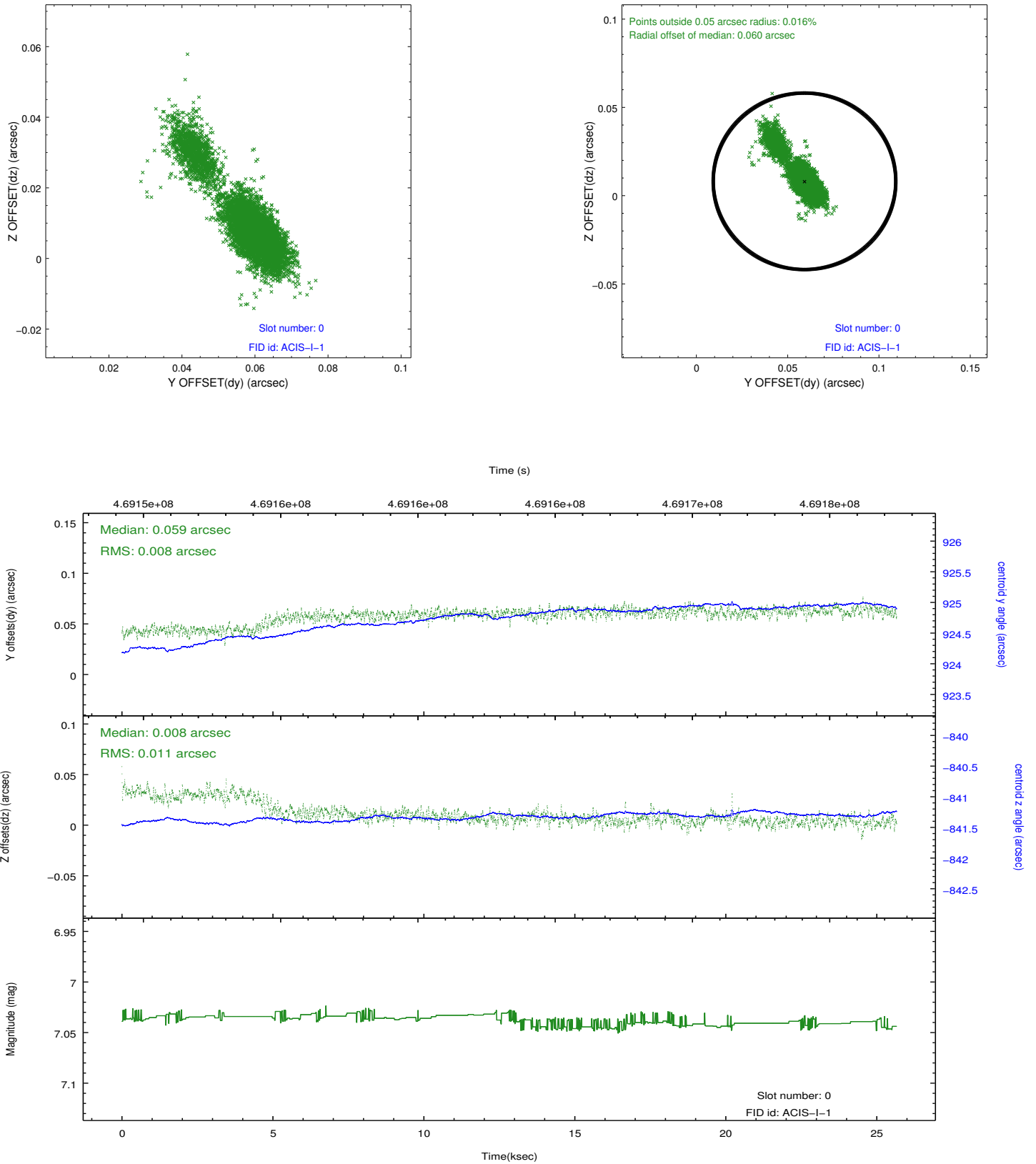


2.4.5 Slot 7

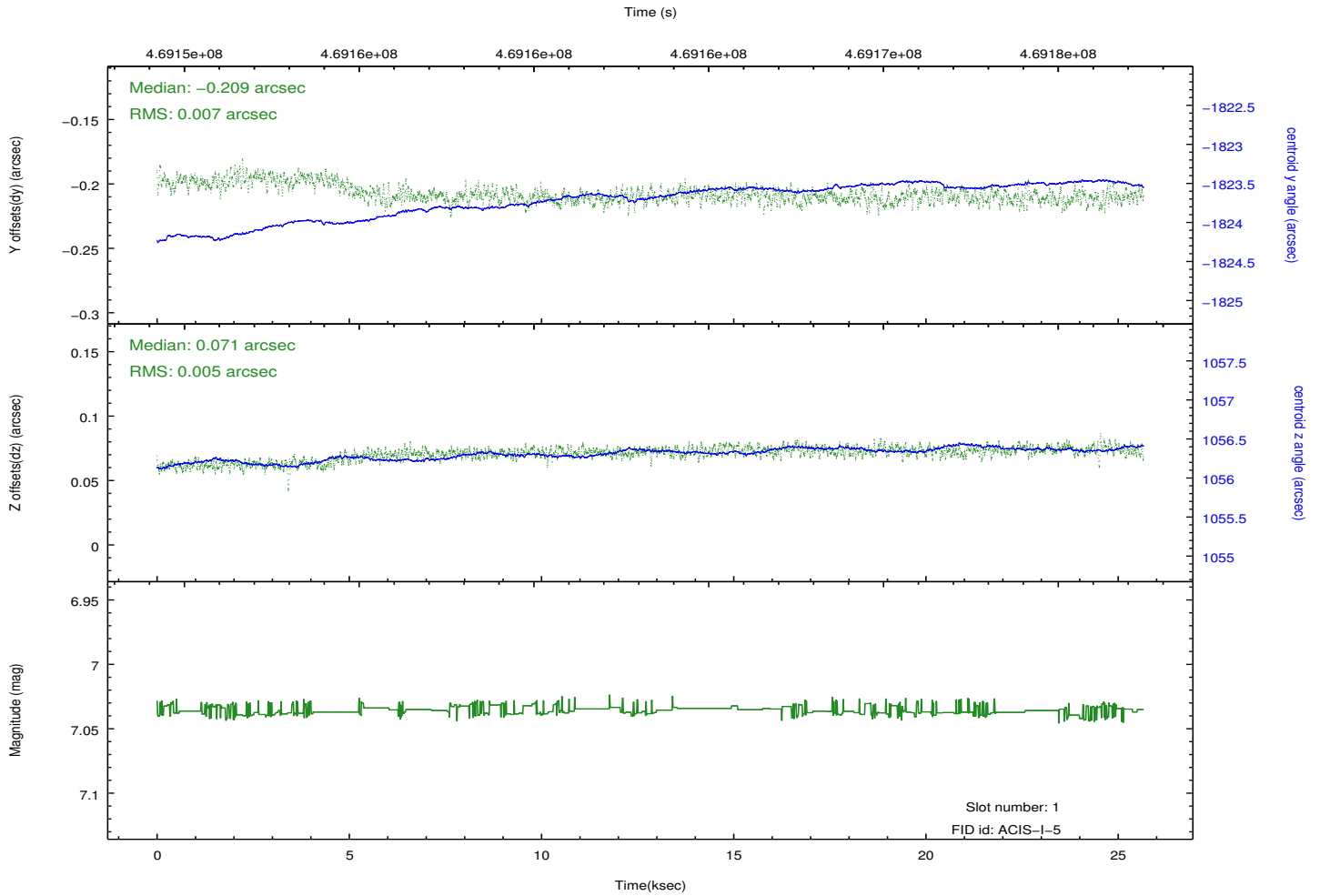
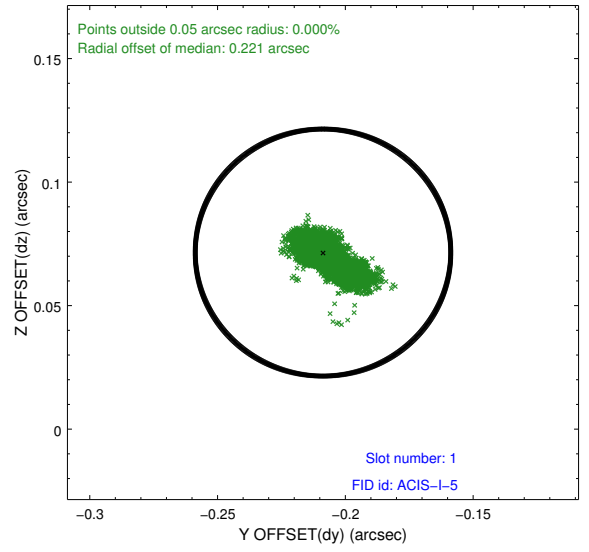
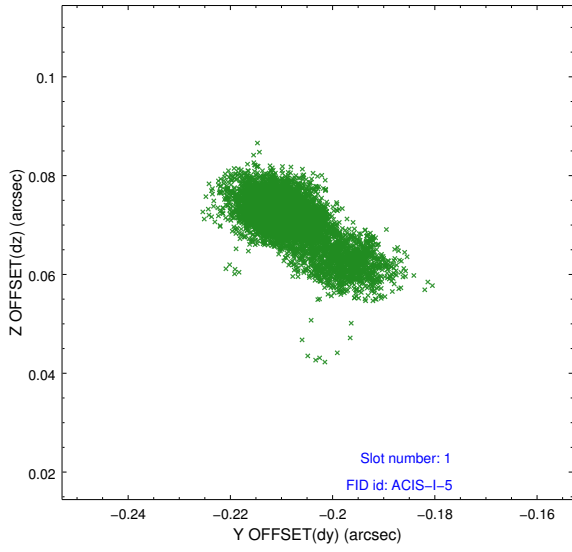


2.5 FID Slots

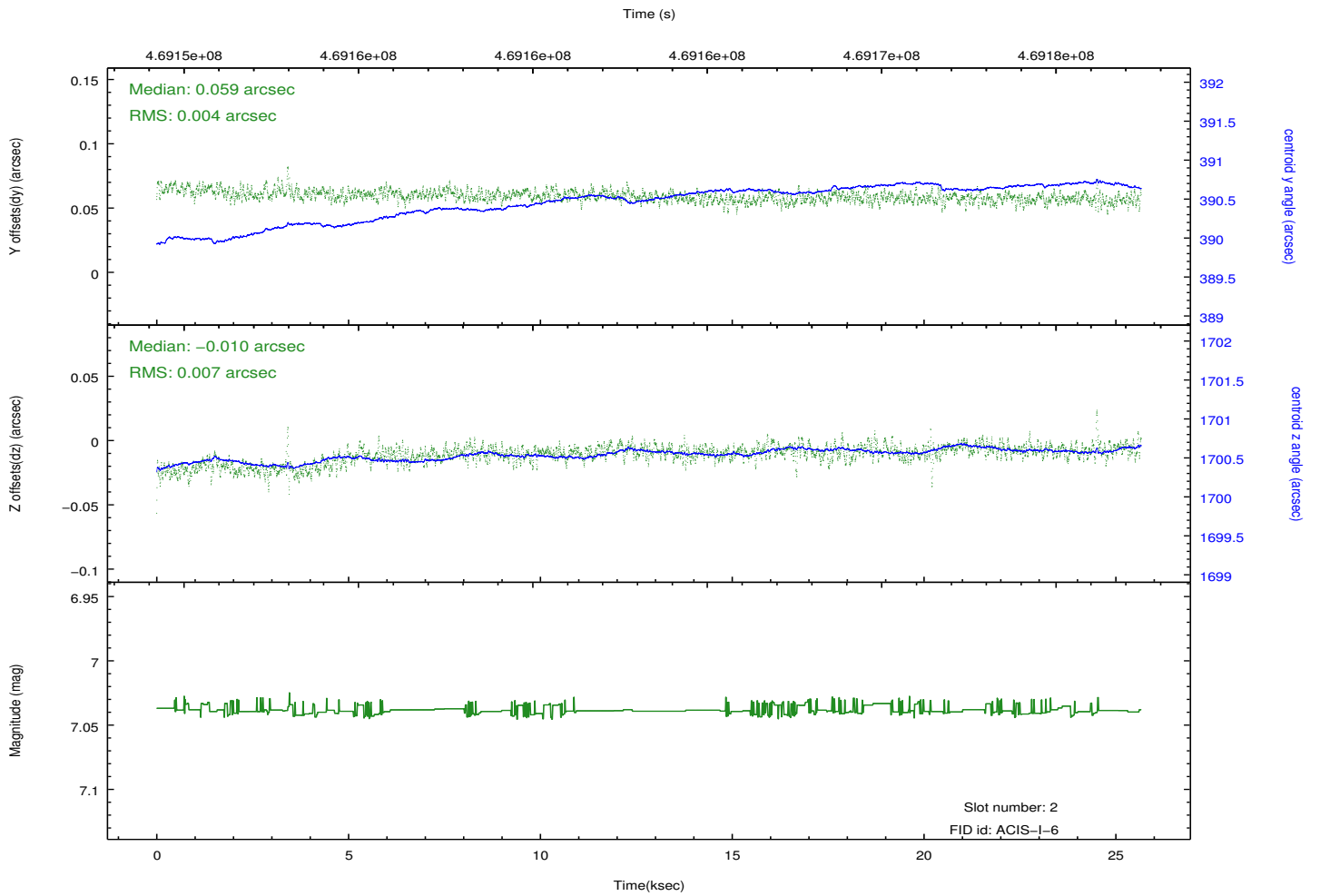
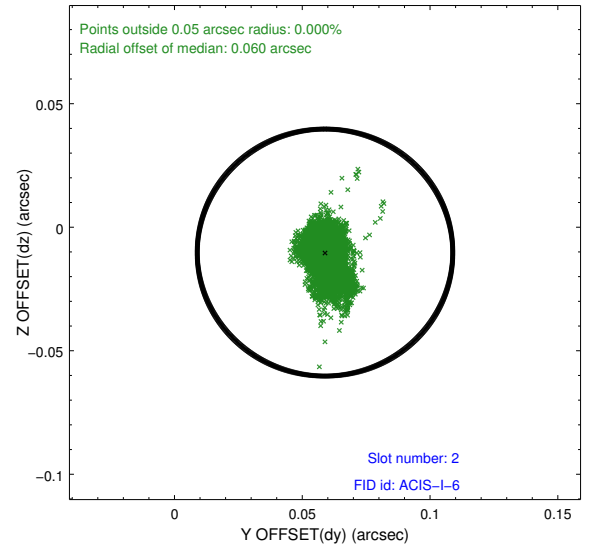
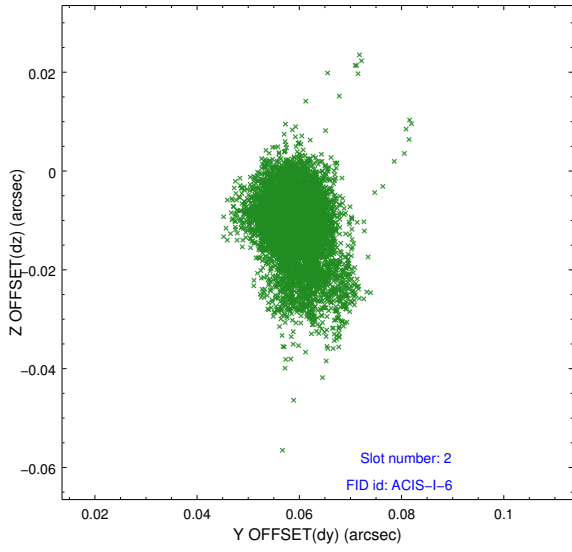
2.5.1 Slot 0



2.5.2 Slot 1



2.5.3 Slot 2



A Summary

A.1 Status

V&V Scientist	Jen Lauer
V&V Date (YYYY-MM-DD)	2014.12.03
V&V Edition	1
V&V Disposition and Status	OK
V&V Charge Time	25.0665592224

A.2 Comments

These data have been reprocessed with new aspect alignment calibration files that correct small mean offsets (up to 0.4 arcsecs) and improve overall astrometric accuracy. The new calibration was determined using data from the time period being reprocessed and was performed using cross-correlation of X-ray sources with radio and optical counterparts.