

V&V Reference Report

L2 ASCDS Version : 8.4.5

Observation 144 - L2 Version 7
Chandra X-Ray Center

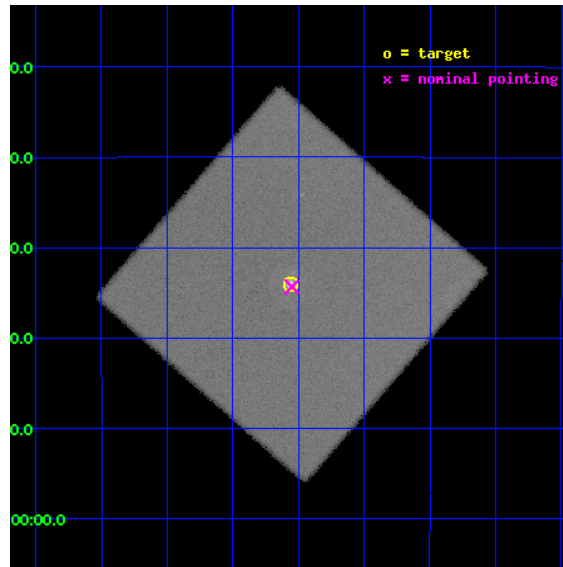
L2 Processing Date : Oct 5 2012

Contents

1	Front	2
2	OBI	3
2.1	OBI	3
2.1.1	Images	3
2.1.2	Parameters	4
2.1.3	Events	4
2.2	Compared Parameters	5
2.3	Aspect	6
2.4	Star Slots	9
2.4.1	Slot 3	9
2.4.2	Slot 4	10
2.4.3	Slot 5	11
2.4.4	Slot 6	12
2.4.5	Slot 7	13
2.5	FID Slots	14
2.5.1	Slot 0	14
2.5.2	Slot 1	15
2.5.3	Slot 2	16
A	Summary	17
A.1	Status	17
A.2	Comments	17

1 Front

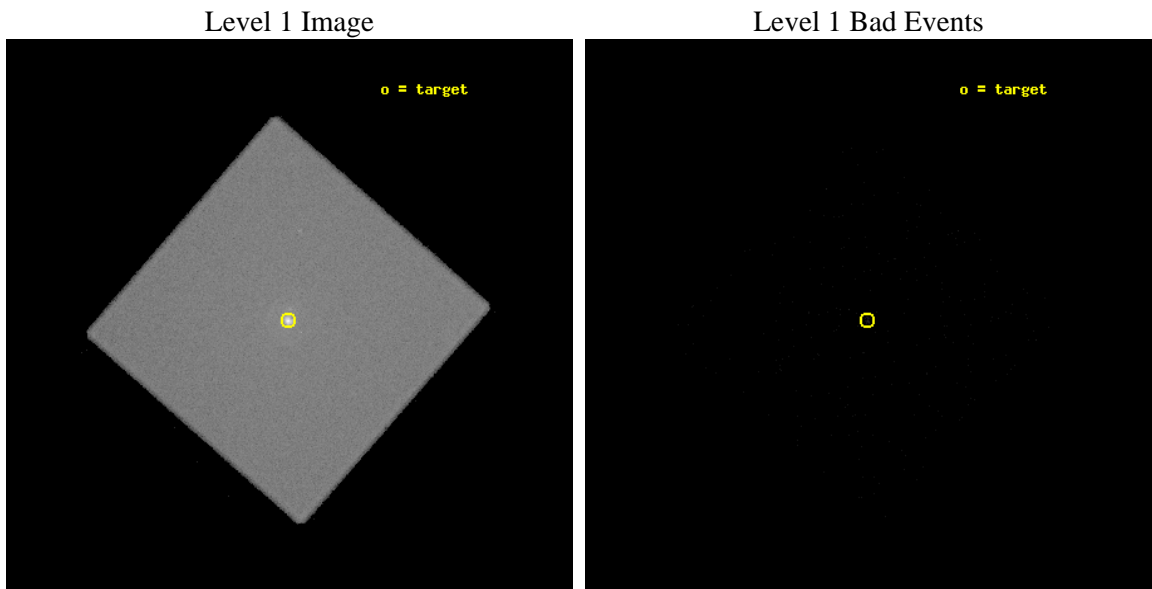
seq_num	590012	Sequence number
obs_id	144	Observation id
title	HRC RESPONSE TO CONTINUUM SOURCE.	Proposal title
observer	Dr. CXC Calibration	Principal investigator
object	G21.5-0.9 [HRC-I, Offsets=0,0,0]	Source name
ra_targ	278.389583	Observer's specified target RA [deg]
dec_targ	-10.568528	Observer's specified target Dec [deg]
ra_nom	278.38757870031	Nominal RA [deg]
dec_nom	-10.572477395455	Nominal Dec [deg]
roll_nom	266.26429513558	Nominal Roll [deg]
revision	7	Processing version of data
ontime	30194.451131865	[s]
livetime	30042.104948875	Ontime multiplied by DTCOR
l2events	854437	Number of level 2 events



2 OBI

2.1 OBI

2.1.1 Images



2.1.2 Parameters

obi_num	0	Obi number	sched_exp_time	30300.000000	[s] Scheduled observation exposure time
ascdsver	8.4.5	Processing system revision	ontime	30194.451133862	[s]
caldbver	4.5.2	 	l1events	1259329	Number of level 1 events
date	2012-10-05T15:16:41	Date and time of file creation			
revision	7	Processing version of data			

2.1.3 Events

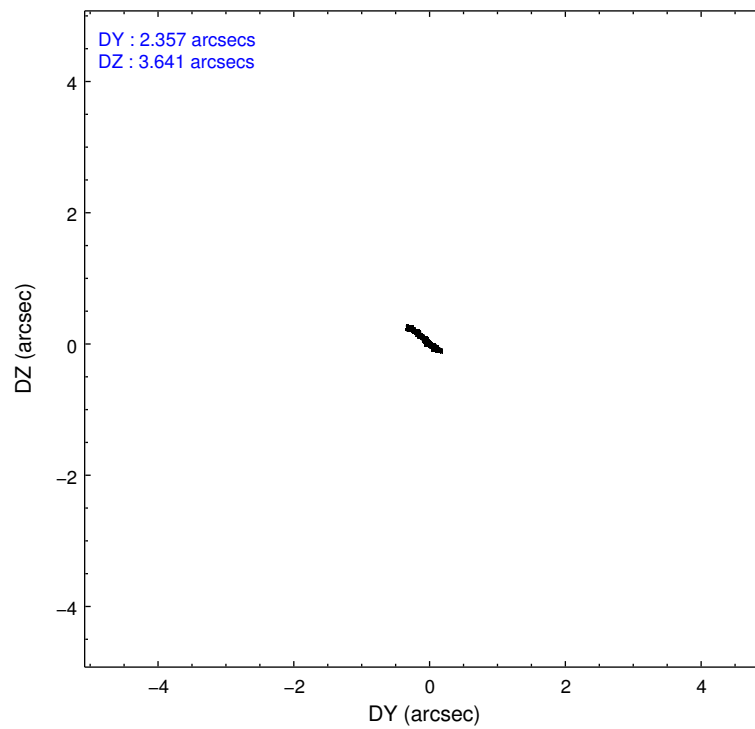
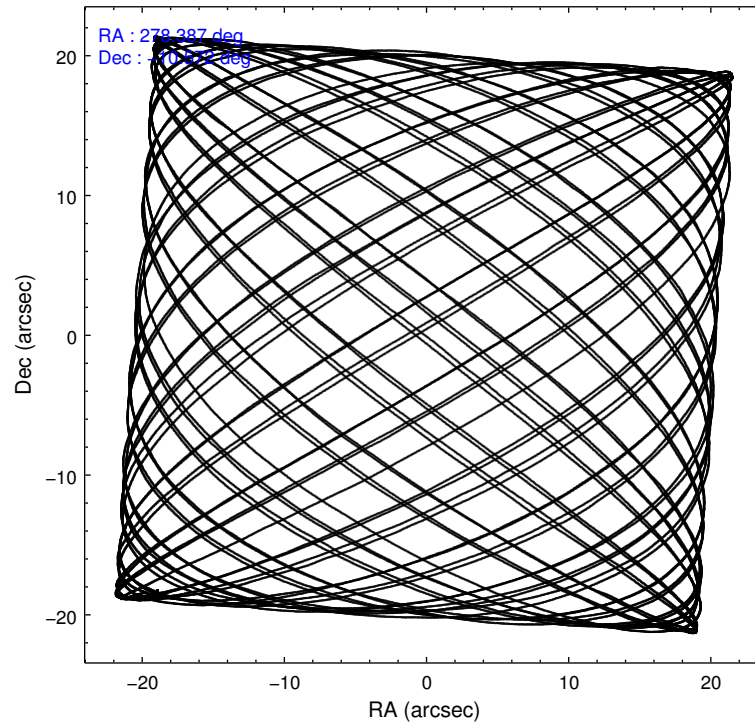
Level 1 Events

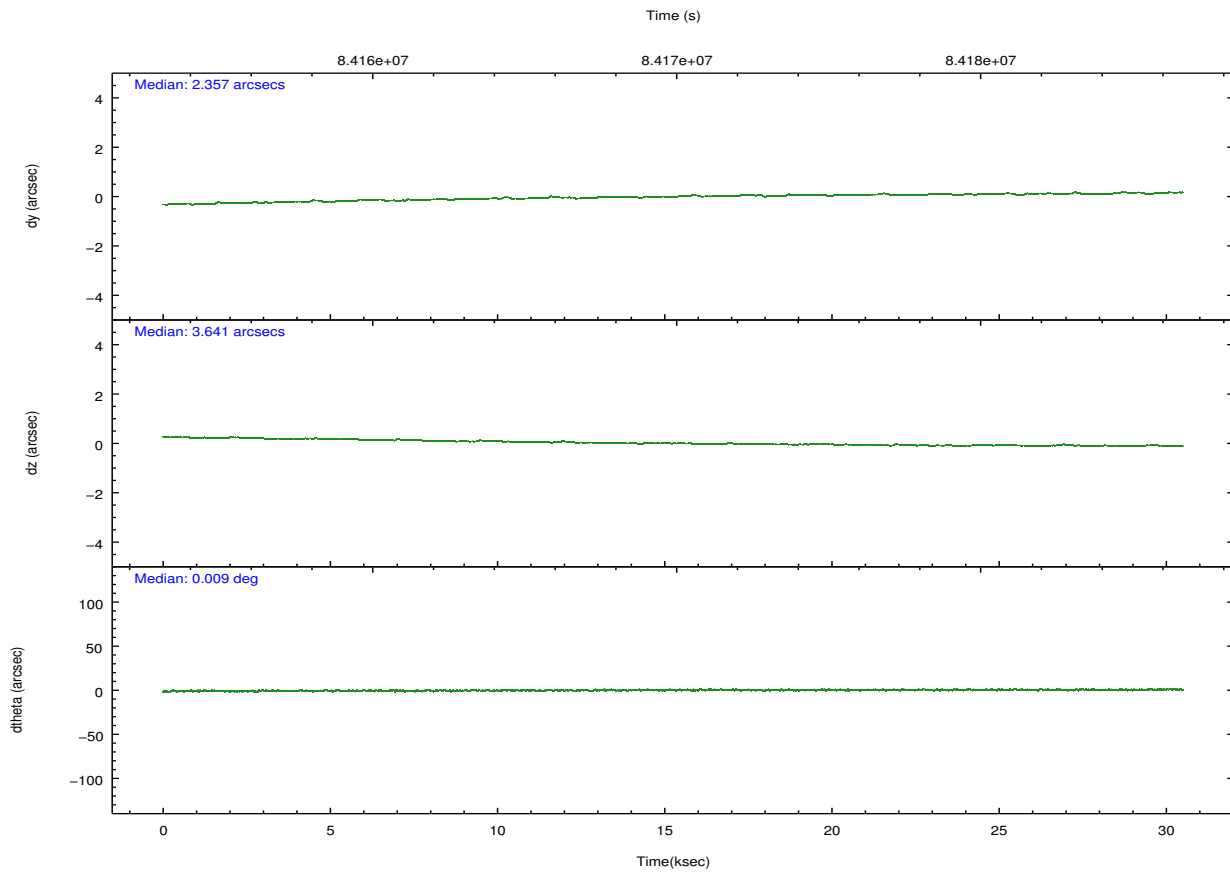
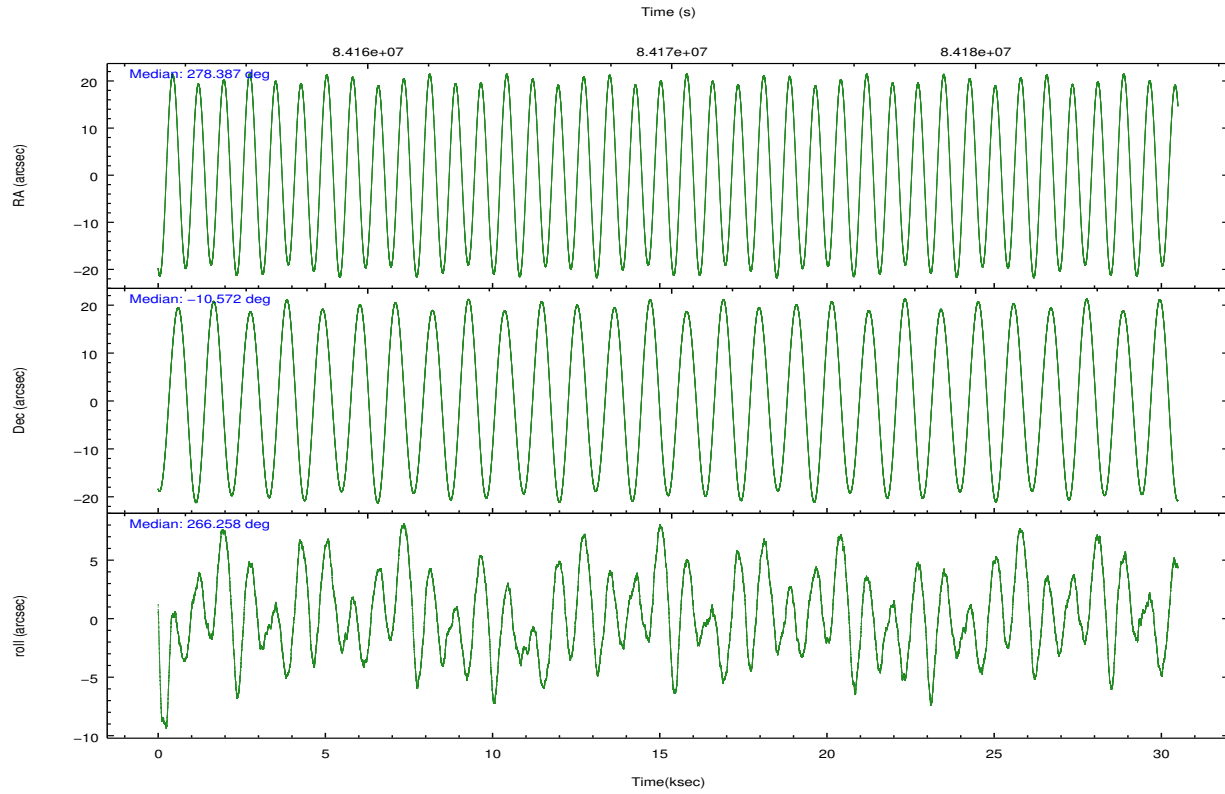
	segment 0
level 1 events	1259329
rejected events	5264
rejected %	0%

2.2 Compared Parameters

Parameter	Planned	Actual	Parameter	Planned	Actual
Instrument	HRC	HRC	Obspar format version number	7	7
Detector	HRC-I	HRC-I	Obspar file type	PREDICTED	ACTUAL
Grating	NONE	NONE	Obspar update status	NONE	UPDATED
Data mode	OBSERVING	OBSERVING			
Observation mode	POINTING	POINTING			
[deg] Pointing RA	278.374926	278.387578700314			
[deg] Pointing Dec	-10.548235	-10.57247739545467			
[deg] Pointing Roll	266.357463	266.2642951355843			
[mm] SIM focus pos	-1.040293	-1.038866356238299			
[mm] SIM defocus	0	0.001426264420575141			
[mm] SIM translation stage pos	126.985494	126.9854943052878			
[mm] SIM translation stage offset	0	-5.413686238853188e-06			
[s] Observation start time (MET)	84154827.184000	84154415.014126			
Observation start date	2000-09-01T00:19:23	2000-09-01T00:13:35			
[s] Observation end time (MET)	84185127.184000	84185915.82780901			
Observation end date	2000-09-01T08:44:23	2000-09-01T08:58:35			

2.3 Aspect



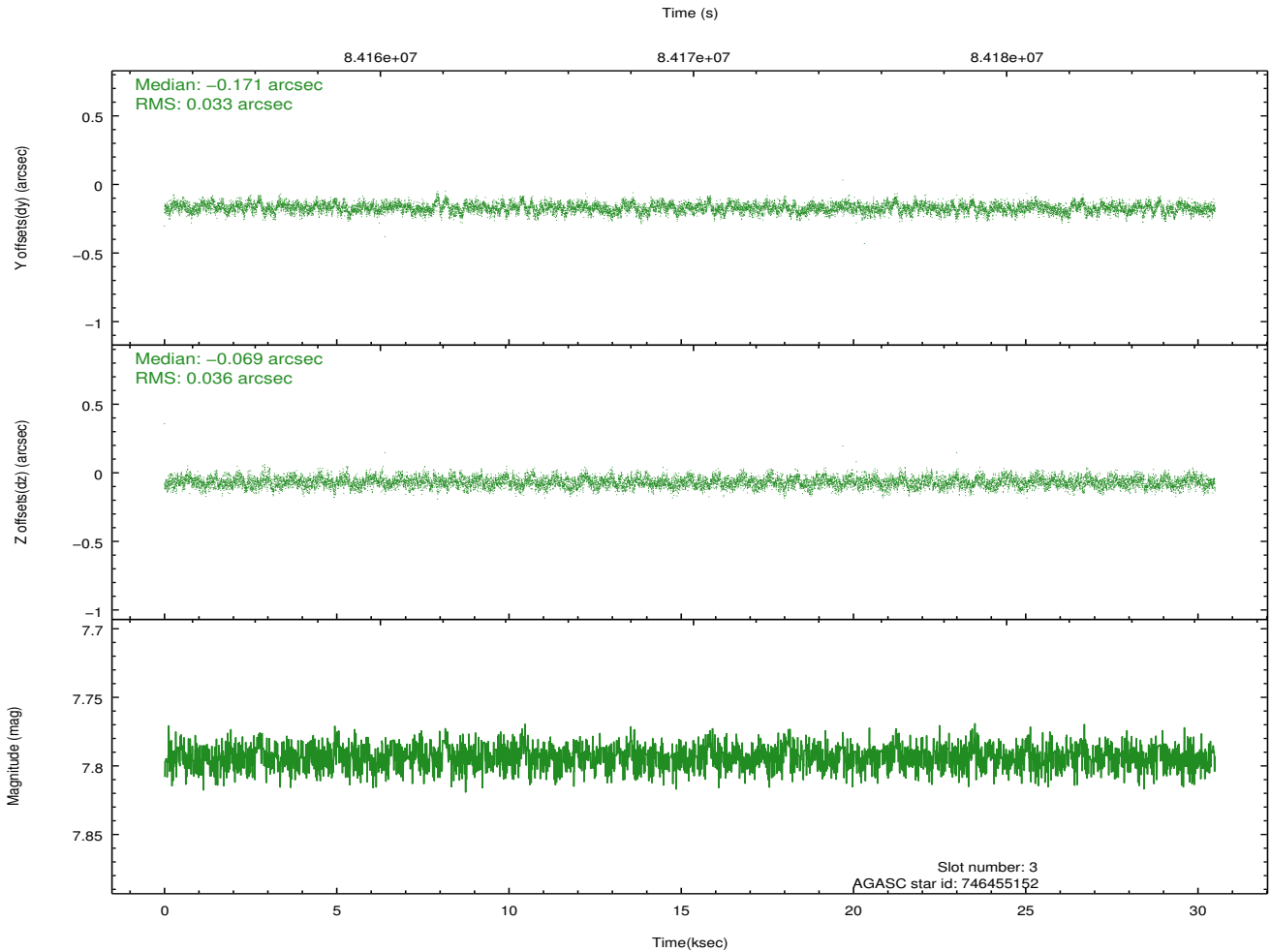
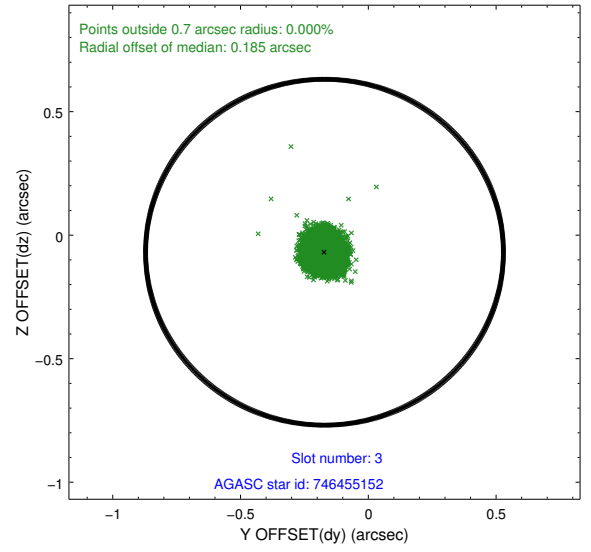
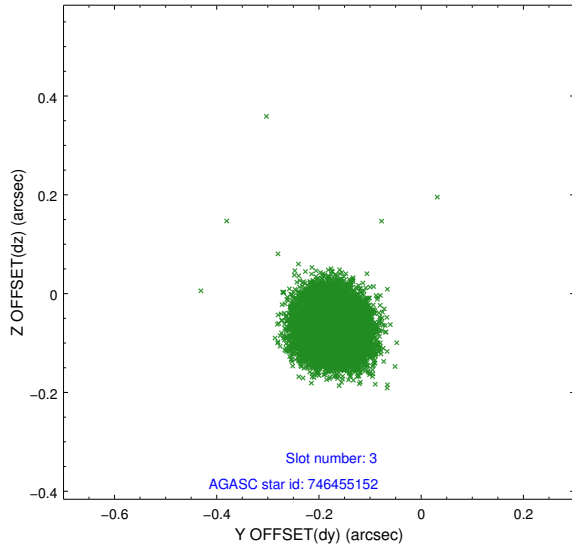


Slot Statistics

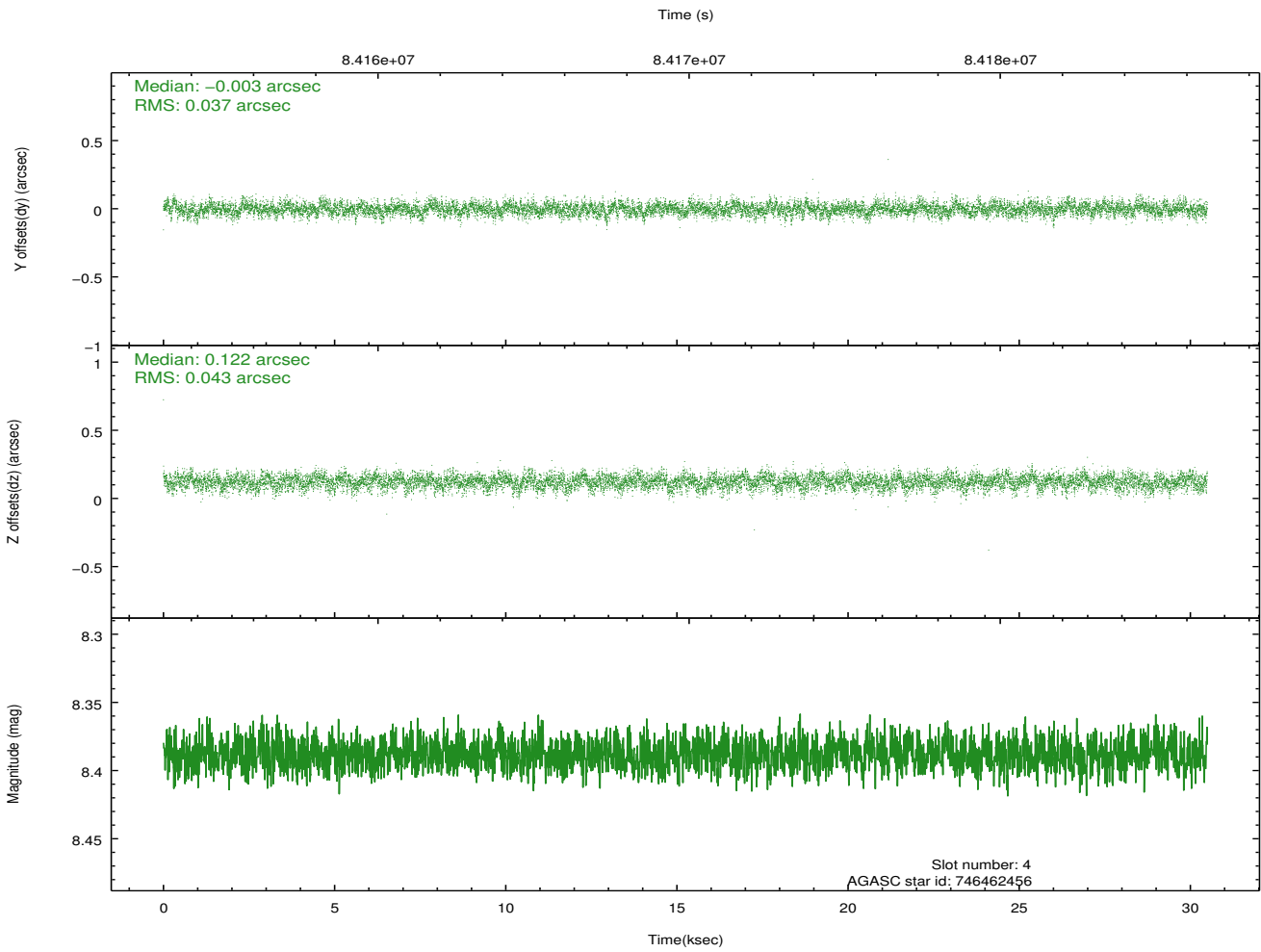
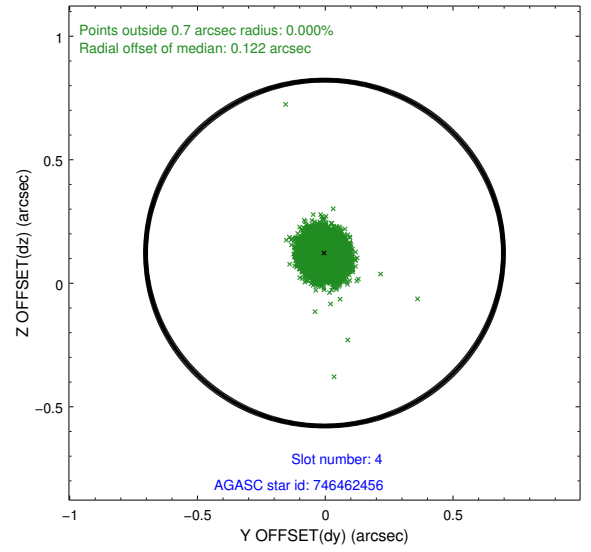
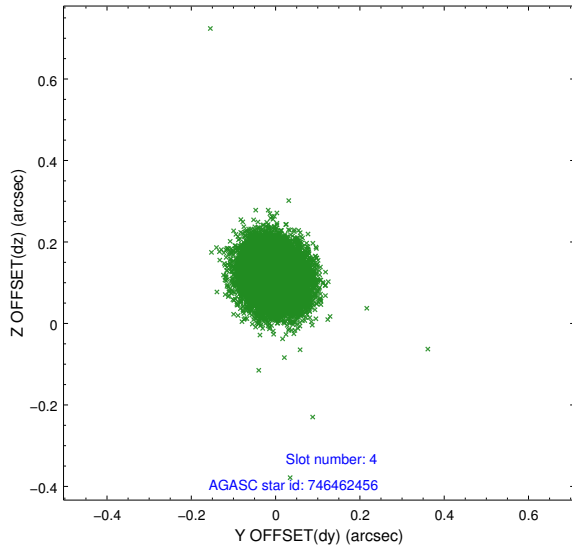
slot	status	id	mag	n_pts	med_dy	med_dz	dr1	dr2	ra	dec	mean_y	mean_z
0	FID	HRC-I-1	6.97	7438	0.064	0.043	0.008	0.014	0.000000	0.000000	-757.74	-1291.42
1	FID	HRC-I-3	7.05	7438	0.025	-0.065	0.012	0.020	0.000000	0.000000	-1186.34	1012.87
2	FID	HRC-I-4	7.00	7438	0.025	-0.068	0.007	0.011	0.000000	0.000000	1284.88	1010.75
3	GUIDE	746455152	7.79	14875	-0.171	-0.069	0.052	0.083	278.447893	-9.976732	-2069.93	127.81
4	GUIDE	746462456	8.39	14873	-0.003	0.122	0.060	0.097	278.652171	-10.530173	-127.03	975.94
5	GUIDE	746455112	8.93	14870	0.226	-0.234	0.072	0.117	278.266531	-10.703234	581.45	-346.67
6	GUIDE	746460272	8.92	14874	-0.036	0.109	0.086	0.135	278.847488	-10.152127	-1528.52	1581.27
7	GUIDE	746461728	9.79	14834	-0.017	0.071	0.120	0.192	278.986921	-10.530755	-198.70	2158.56

2.4 Star Slots

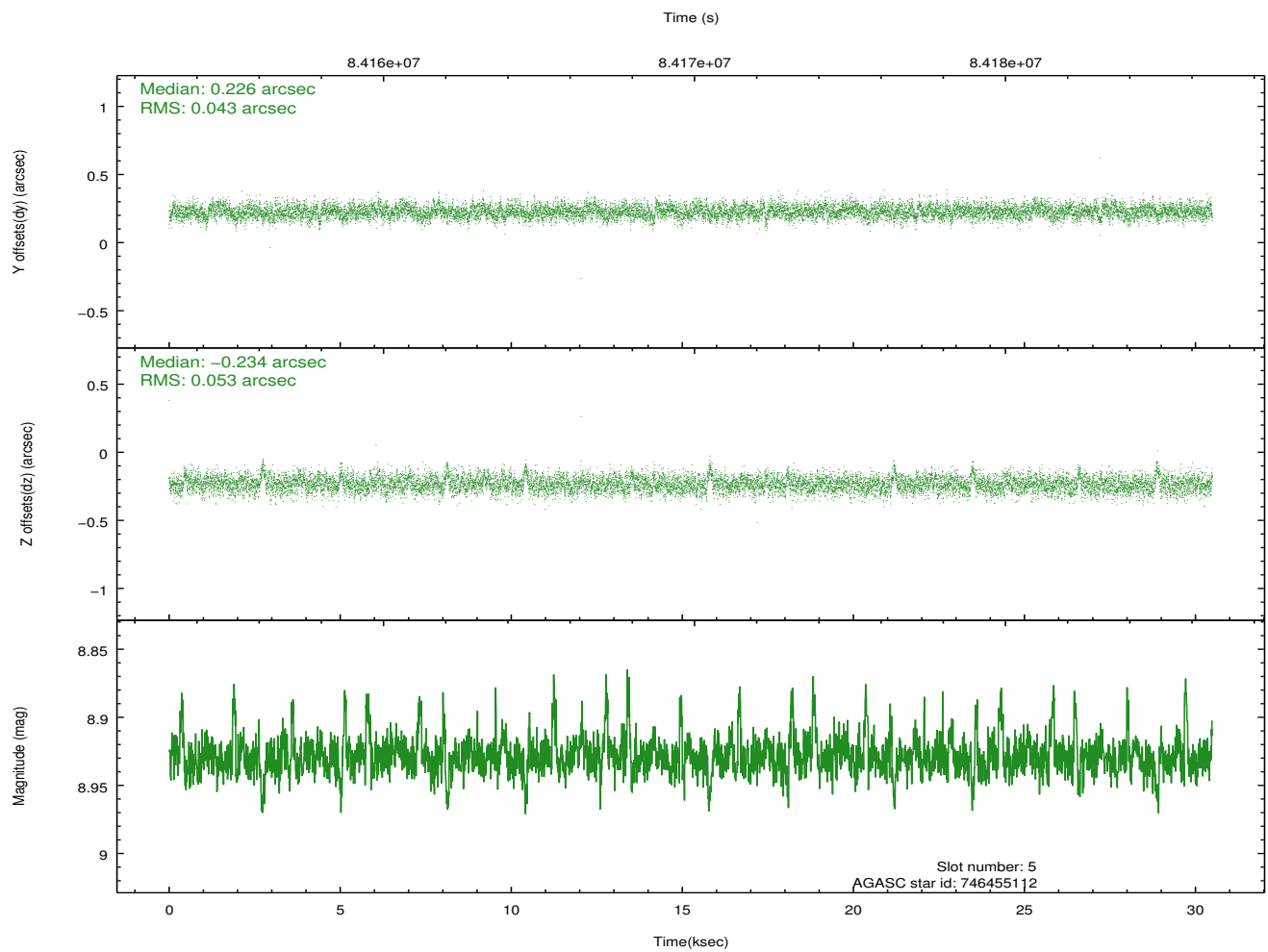
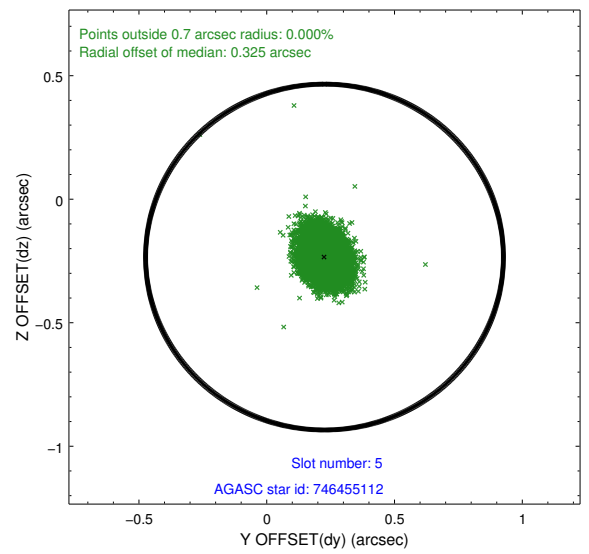
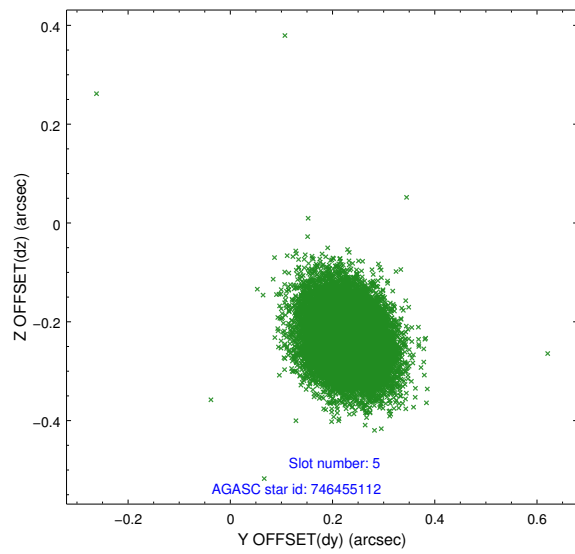
2.4.1 Slot 3



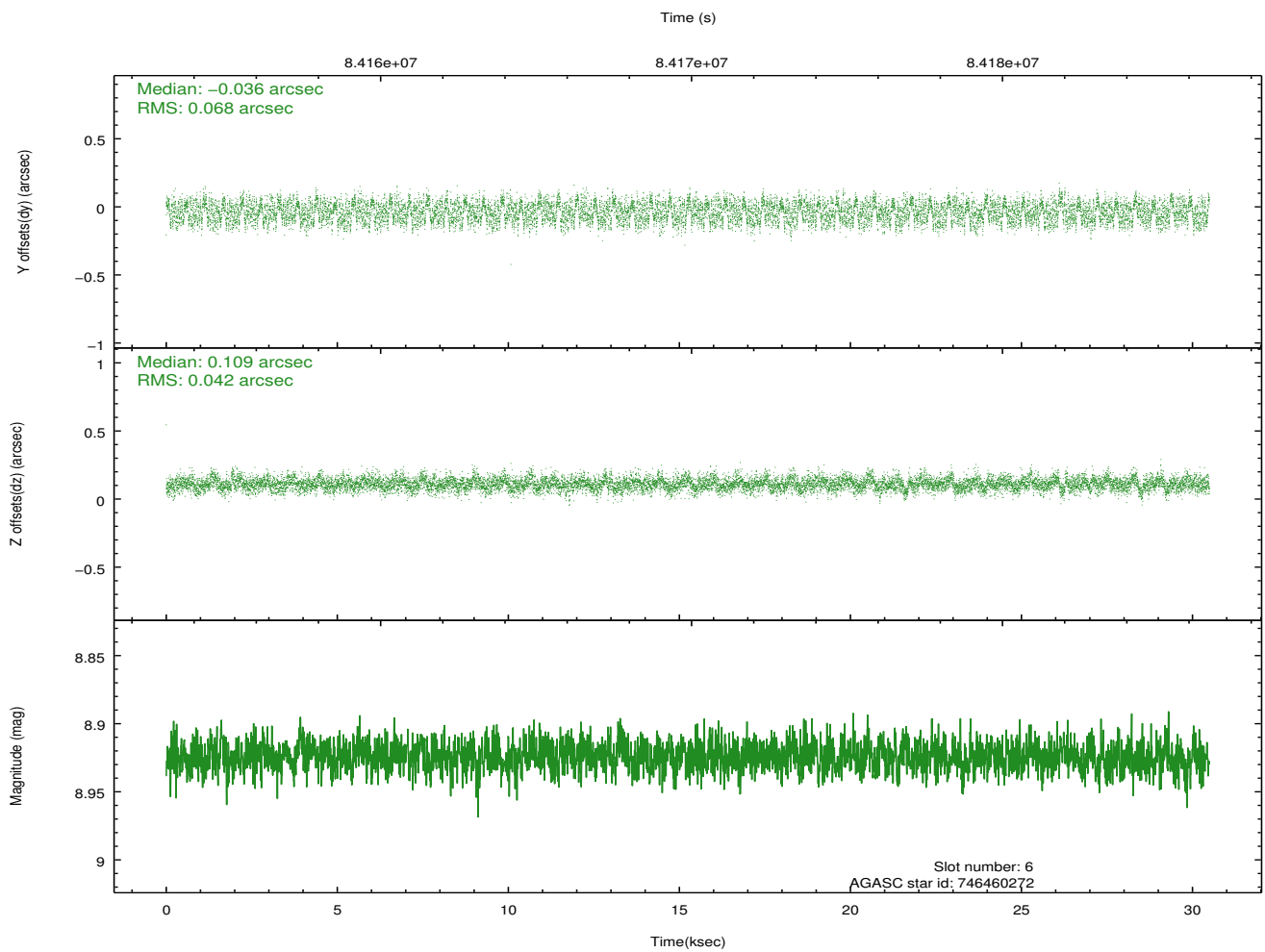
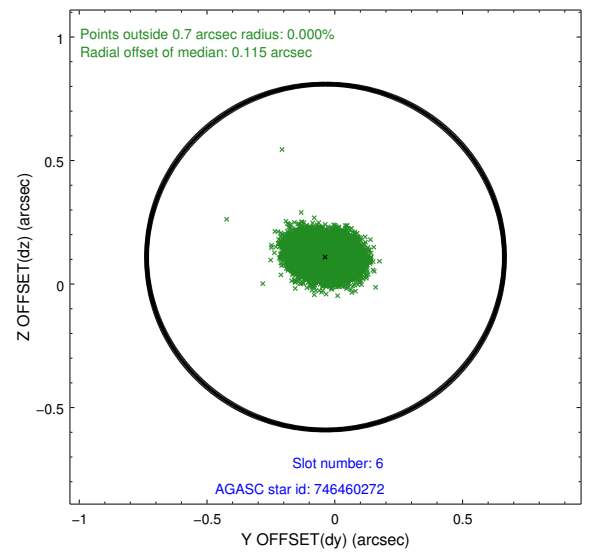
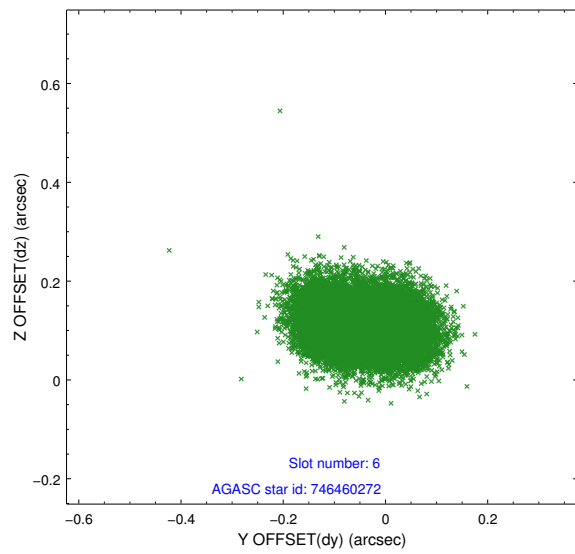
2.4.2 Slot 4



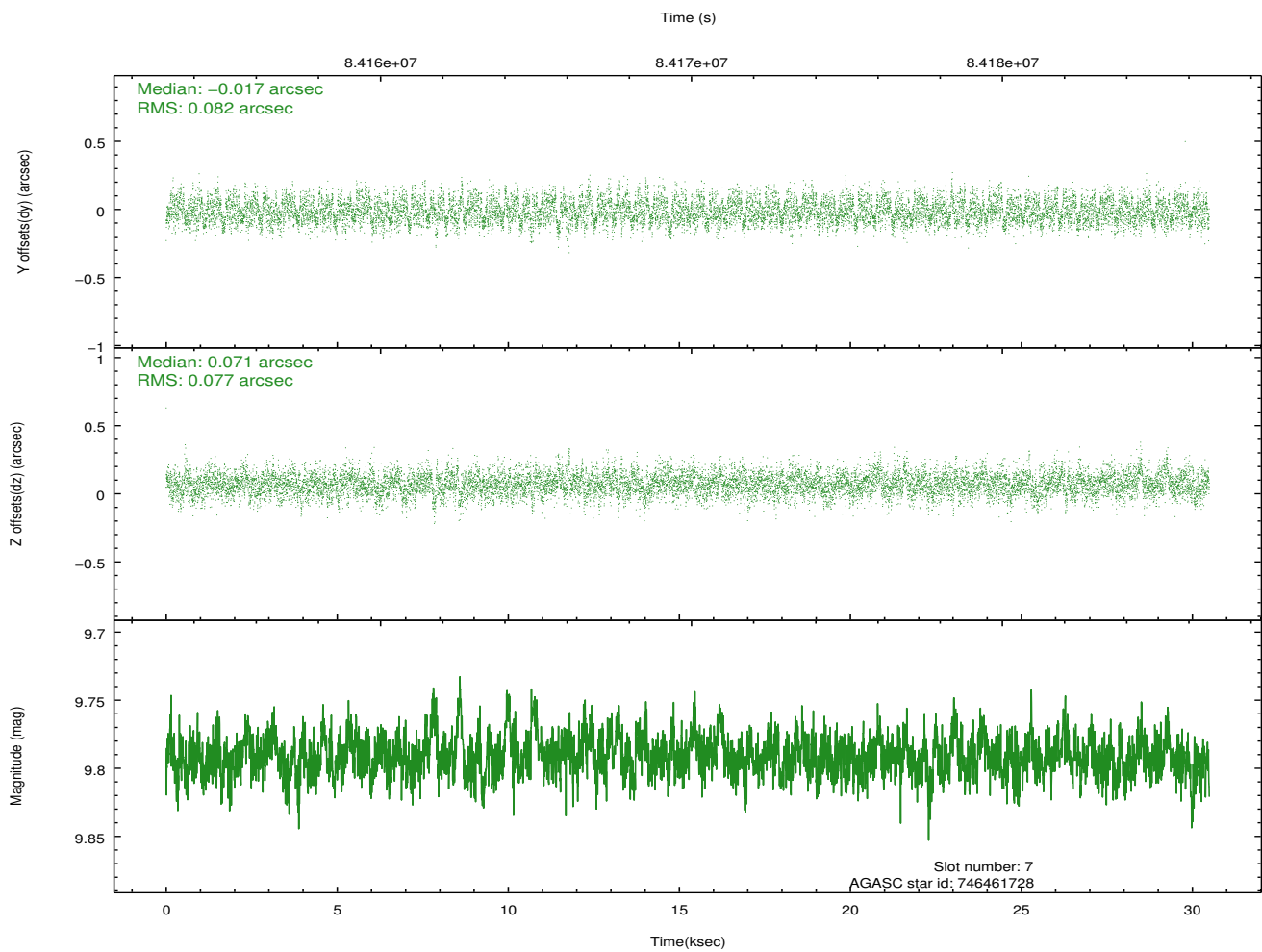
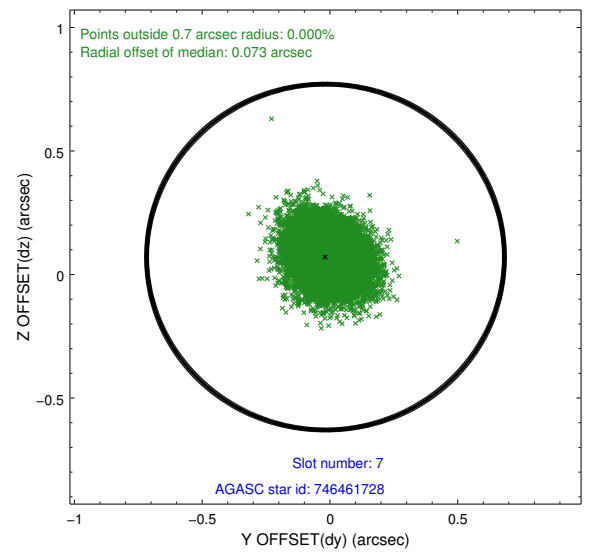
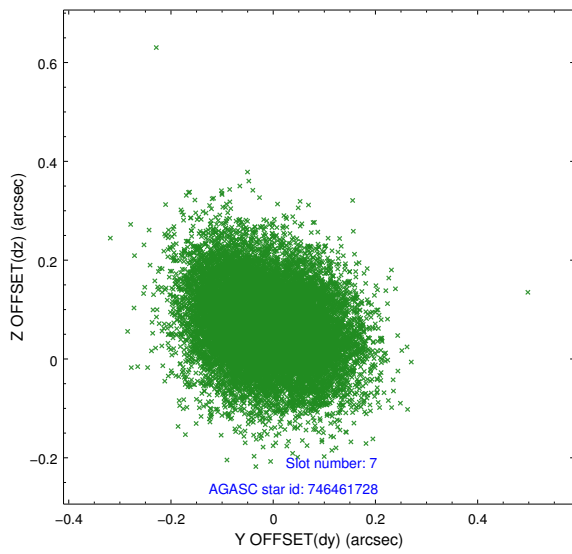
2.4.3 Slot 5



2.4.4 Slot 6

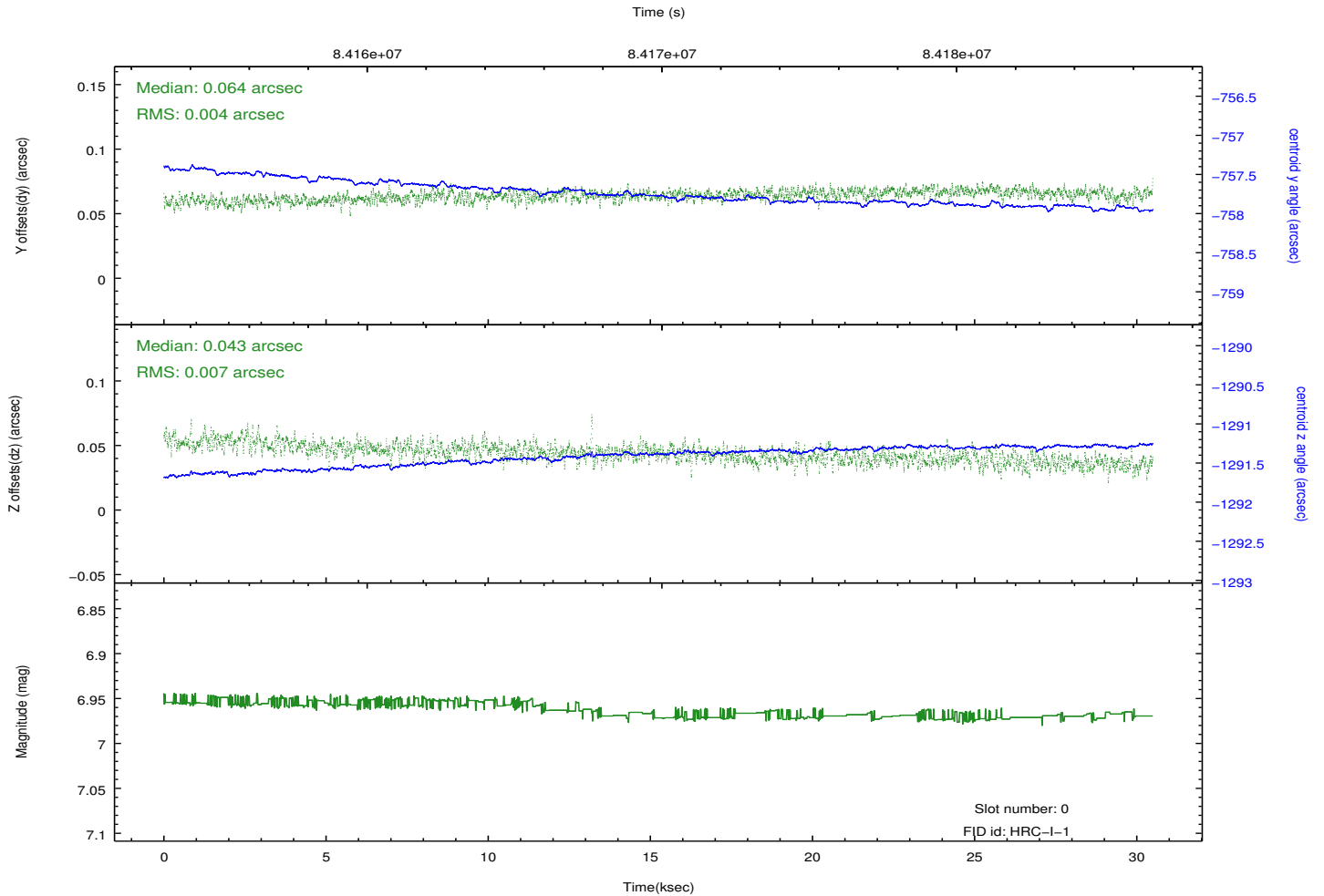
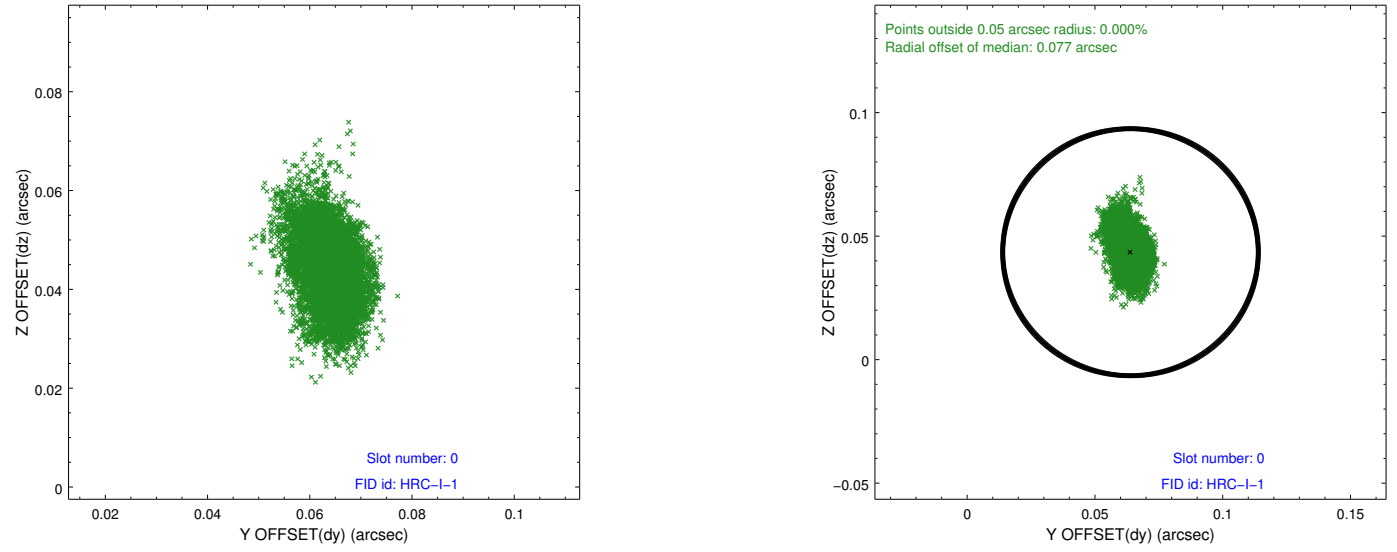


2.4.5 Slot 7

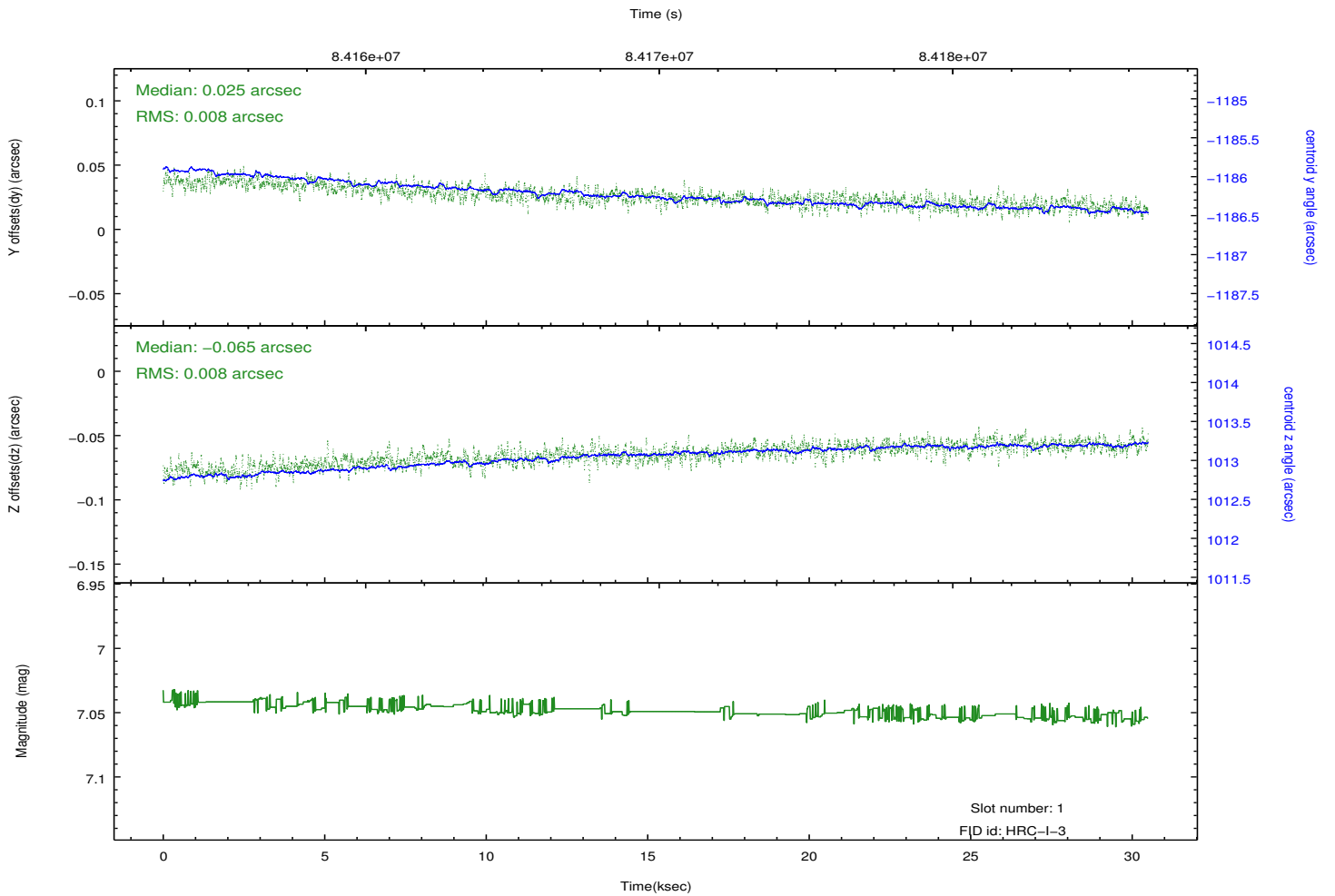
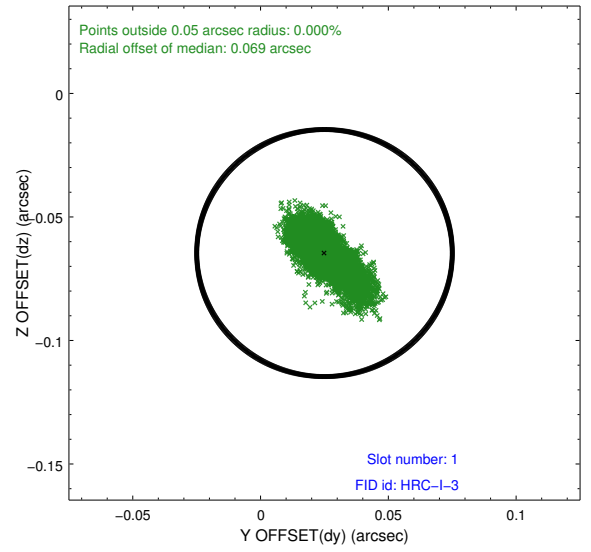
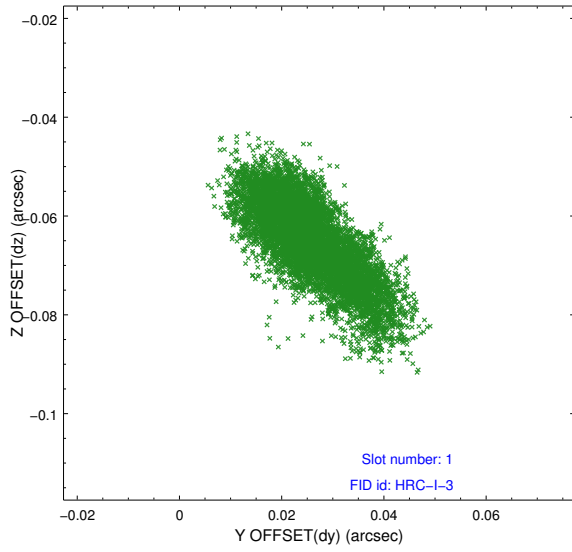


2.5 FID Slots

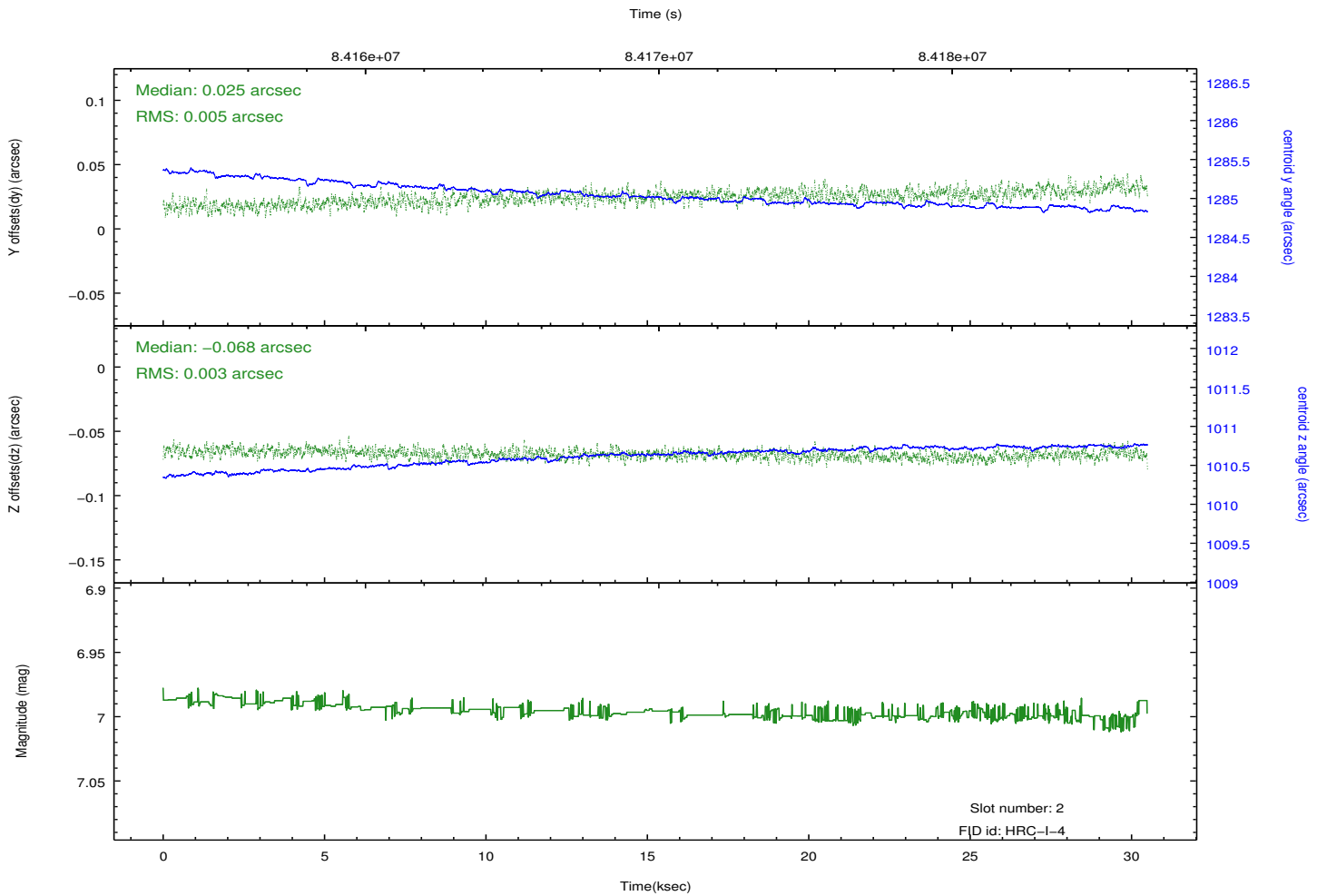
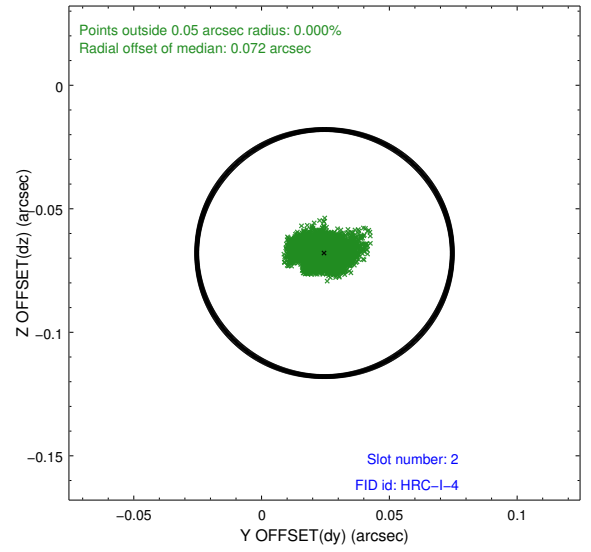
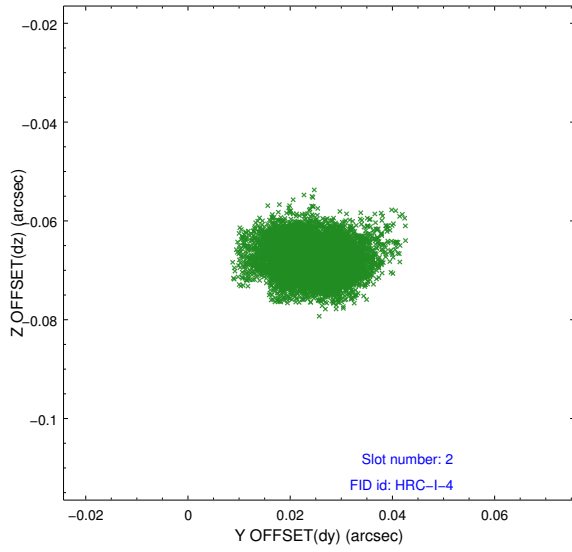
2.5.1 Slot 0



2.5.2 Slot 1



2.5.3 Slot 2



A Summary

A.1 Status

V&V Scientist	Joy Nichols
V&V Date (YYYY-MM-DD)	2012.10.10
V&V Edition	1
V&V Disposition and Status	OK
V&V Charge Time	30.184

A.2 Comments