

# V&V Reference Report

## L2 ASCDS Version : 8.4.5

Observation 14434 - L2 Version 2  
Chandra X-Ray Center

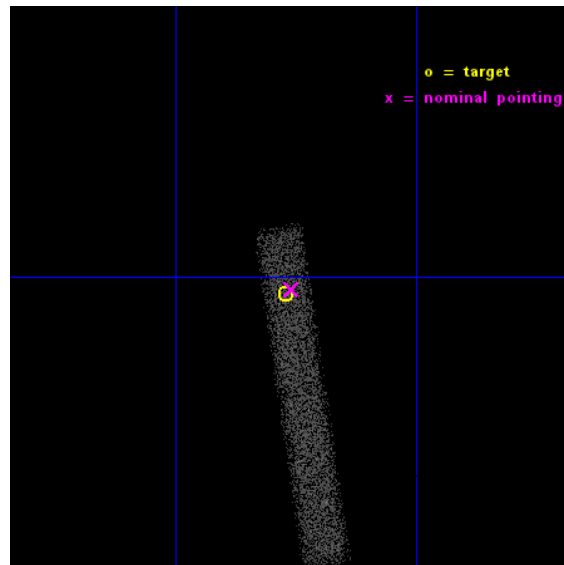
L2 Processing Date : Nov 27 2014

## Contents

<b>1</b>	<b>Front</b>	<b>2</b>
<b>2</b>	<b>OBI</b>	<b>3</b>
2.1	OBI . . . . .	3
2.1.1	Images . . . . .	3
2.1.2	Bias . . . . .	3
2.1.3	Parameters . . . . .	4
2.1.4	Events . . . . .	4
2.2	Compared Parameters . . . . .	5
2.3	Aspect . . . . .	6
2.4	Star Slots . . . . .	9
2.4.1	Slot 3 . . . . .	9
2.4.2	Slot 4 . . . . .	10
2.4.3	Slot 5 . . . . .	11
2.4.4	Slot 6 . . . . .	12
2.4.5	Slot 7 . . . . .	13
2.5	FID Slots . . . . .	14
2.5.1	Slot 0 . . . . .	14
2.5.2	Slot 1 . . . . .	15
2.5.3	Slot 2 . . . . .	16
<b>A</b>	<b>Summary</b>	<b>17</b>
A.1	Status . . . . .	17
A.2	Comments . . . . .	17

# 1 Front

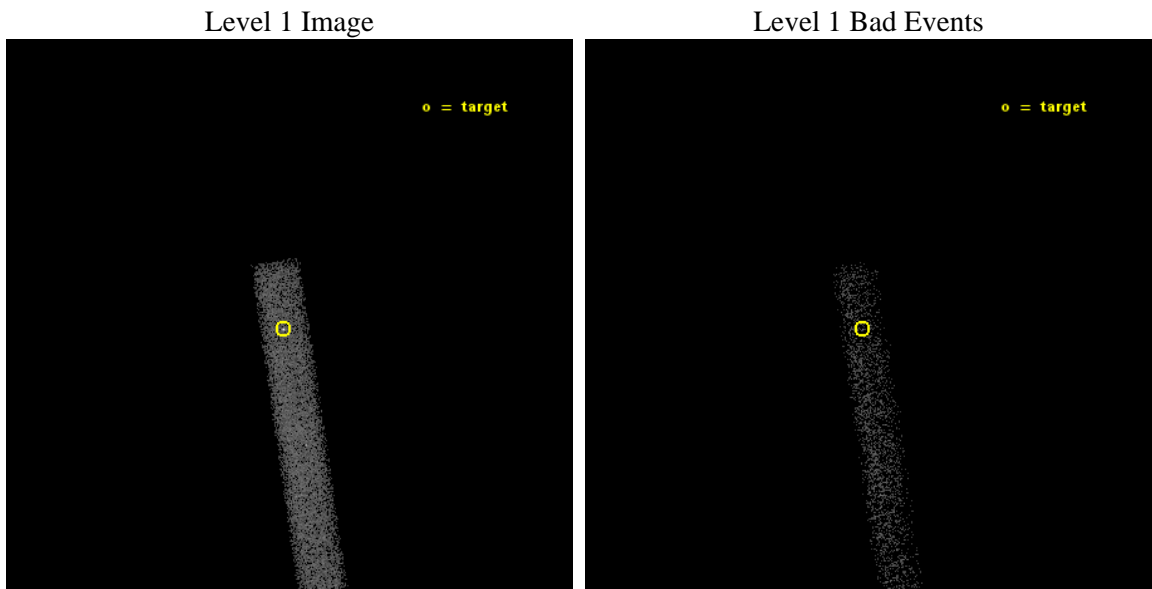
seq_num	401433	Sequence number
obs_id	14434	Observation id
title	Crust cooling of accretion heated neutron stars	Proposal title
observer	Dr. Rudy Wijnands	Principal investigator
object	MAXI J0556-332	Source name
dtcycle	0	&#160
cycle	P	events from which exps? Prim/Second/Both
ra_targ	89.1925	Observer's specified target RA [deg]
dec_targ	-33.173972	Observer's specified target Dec [deg]
ra_nom	89.189781432387	Nominal RA [deg]
dec_nom	-33.171986029912	Nominal Dec [deg]
roll_nom	81.378359267023	Nominal Roll [deg]
revision	2	Processing version of data
ontime	20070.398803711	Sum of GTIs [s]
livetime	18202.792312453	Livetime [s]
ontime7	20070.398803711	Sum of GTIs [s]
l2events	10256	Number of level 2 events



## 2 OBI

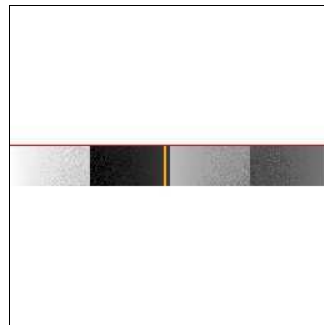
### 2.1 OBI

#### 2.1.1 Images



#### 2.1.2 Bias

Chip 7



### 2.1.3 Parameters

obi_num	0	Obi number	sched_exp_time	20000.082000	[s] Scheduled observation exposure time
ascdsver	10.3	Processing system revision	ontime	20070.398803711	Sum of GTIs [s]
caldbver	4.6.4	&#160	ontime7	20070.398803711	Sum of GTIs [s]
date	2014-11-27T16:40:46	Date and time of file creation	l1events	20155	Number of level 1 events
revision	2	Processing version of data			

### 2.1.4 Events

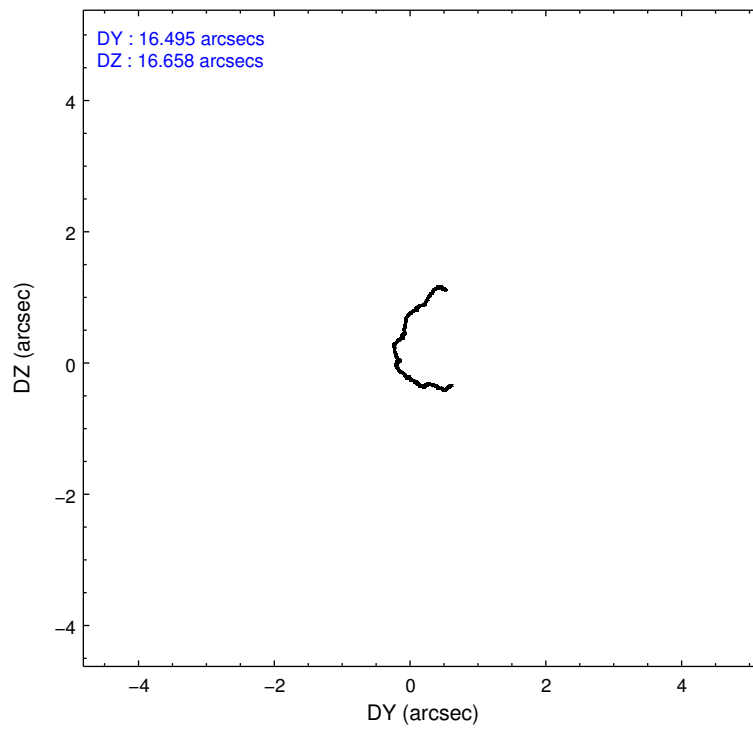
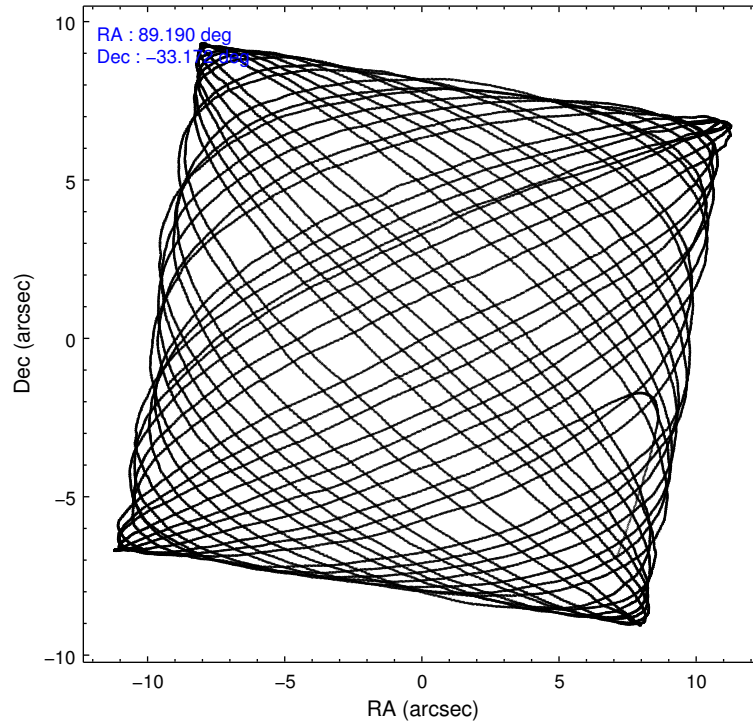
	<b>ccd 7</b>
level 1 events	20155
rejected events	9484
rejected %	47%

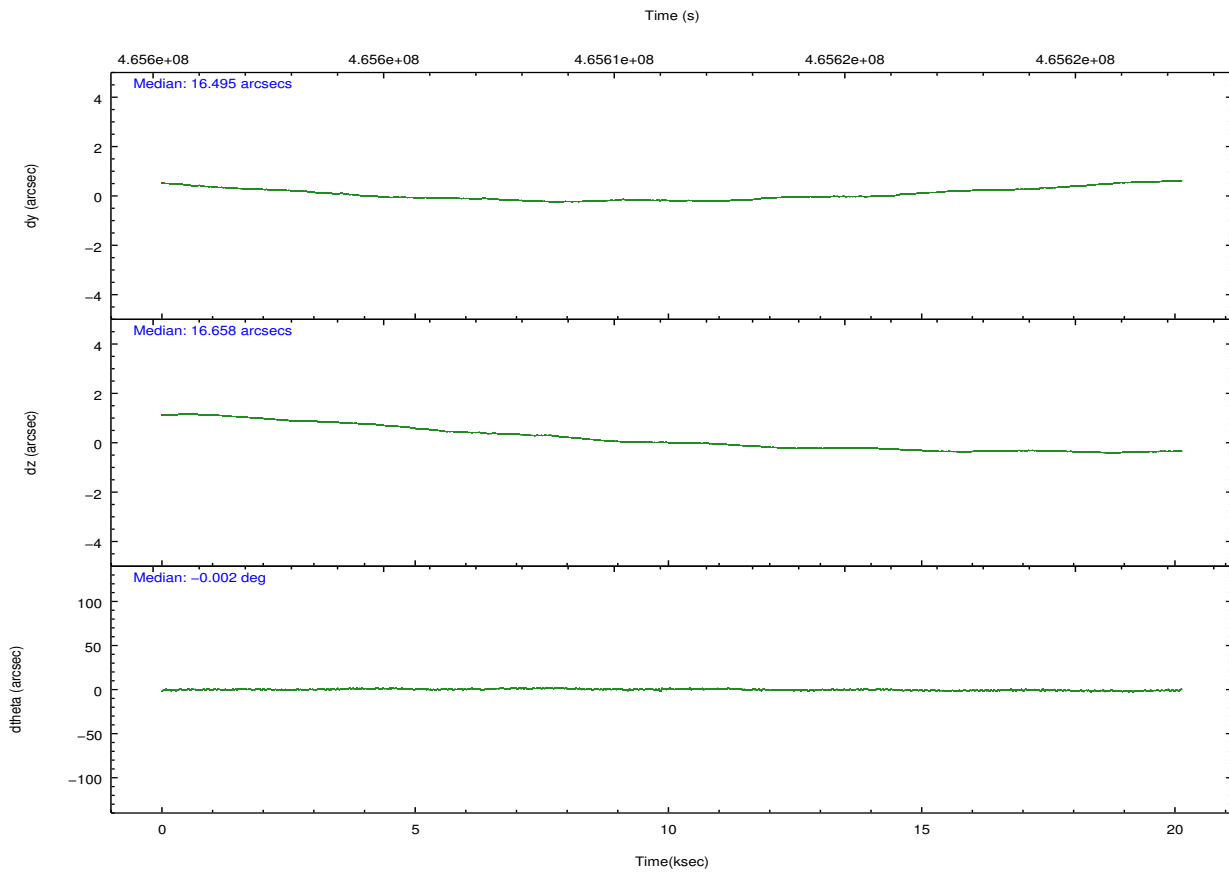
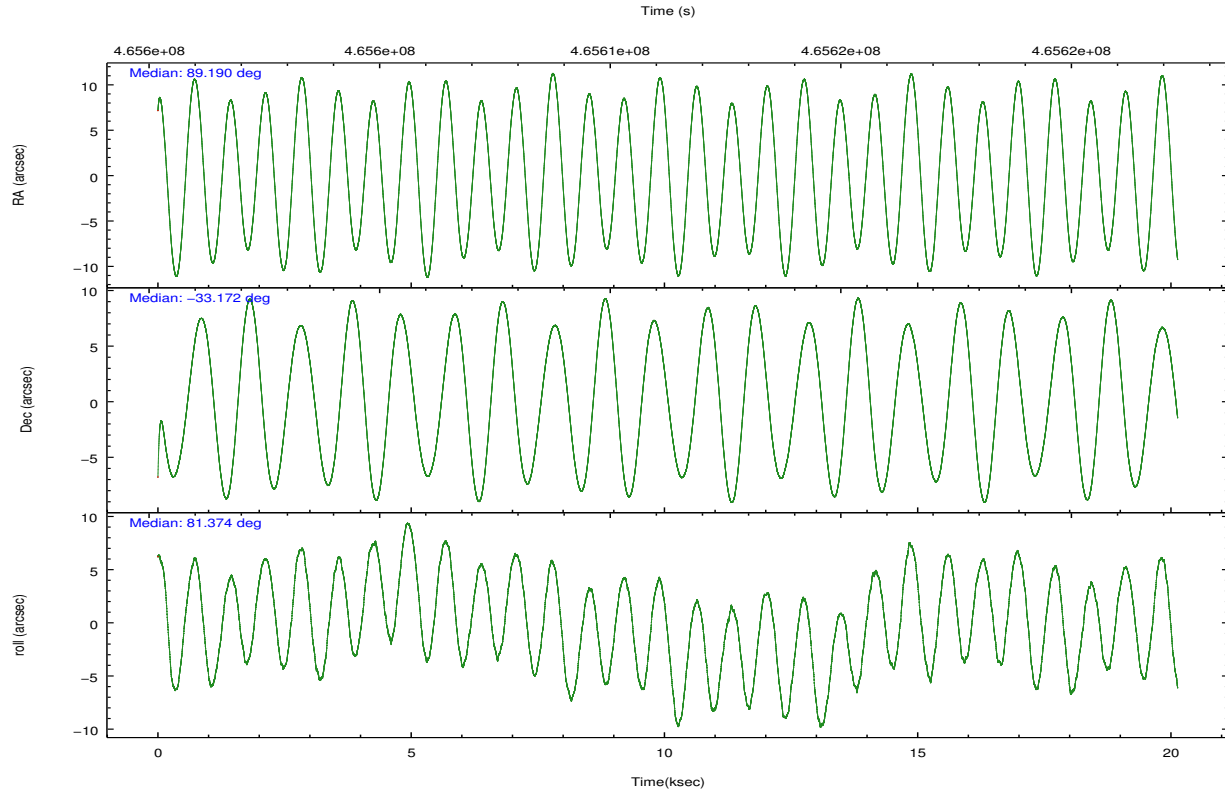
	<b>ccd 7</b>
grade 0 events	1390
	6%
grade 1 events	27
	0%
grade 2 events	2153
	10%
grade 3 events	1368
	6%
grade 4 events	1324
	6%
grade 5 events	1838
	9%
grade 6 events	4436
	22%
grade 7 events	7619
	37%

## 2.2 Compared Parameters

Parameter	Planned	Actual	Parameter	Planned	Actual
Instrument	ACIS	ACIS	Obspar format version number	7	7
Detector	ACIS-7	ACIS-7	Obspar file type	PREDICTED	ACTUAL
Grating	NONE	NONE	Obspar update status	NONE	UPDATED
Data mode	FAINT	FAINT	Number of optional ACIS chips dropped	0	0
Observation mode	POINTING	POINTING	On-chip summing requested	N	N
[deg] Pointing RA	89.202098	89.18978143238716	Subarray requested	CUSTOM	1/8
[deg] Pointing Dec	-33.197311	-33.17198602991219	Subarray start row	449	449
[deg] Pointing Roll	81.228472	81.378359267023	Subarray row count	128	128
[mm] SIM focus pos	-0.684267	-0.6828225247311905	Alternating exposures requested	N	N
[mm] SIM defocus	0	0.001444936568705701	[s] Primary exposure time	0.000000	0.4
[mm] SIM translation stage pos	-190.132523	-190.1425803651734			
[mm] SIM translation stage offset	0	0.01005778216563158			
[s] Observation start time (MET)	465601316.184000	465600164.39766			
Observation start date	2012-10-02T21:40:49	2012-10-02T21:22:44			
[s] Observation end time (MET)	465621316.184000	465621542.31131			
Observation end date	2012-10-03T03:14:09	2012-10-03T03:19:02			
Read mode	TIMED	TIMED			

## 2.3 Aspect





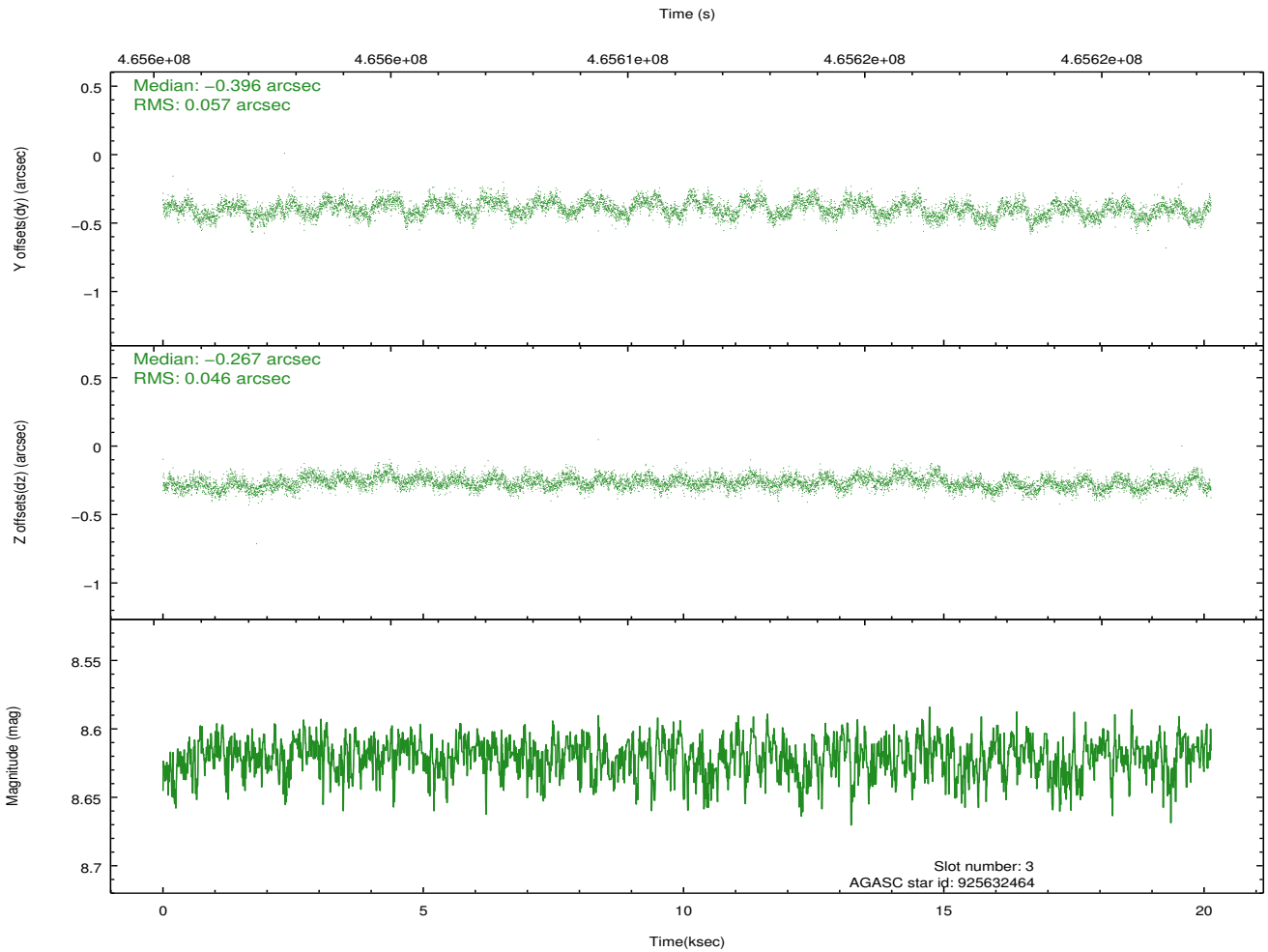
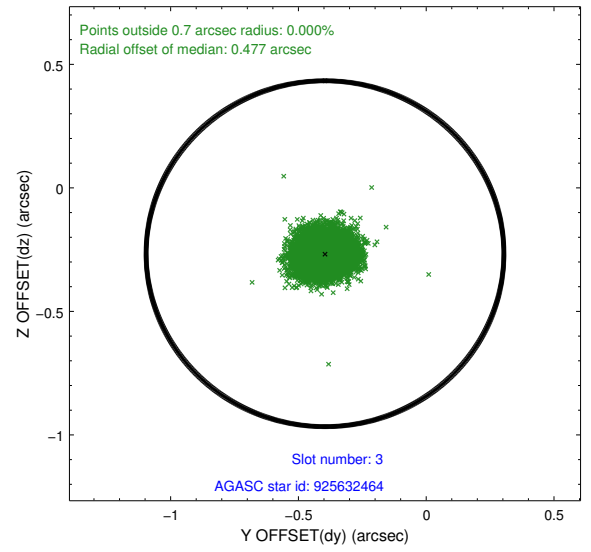
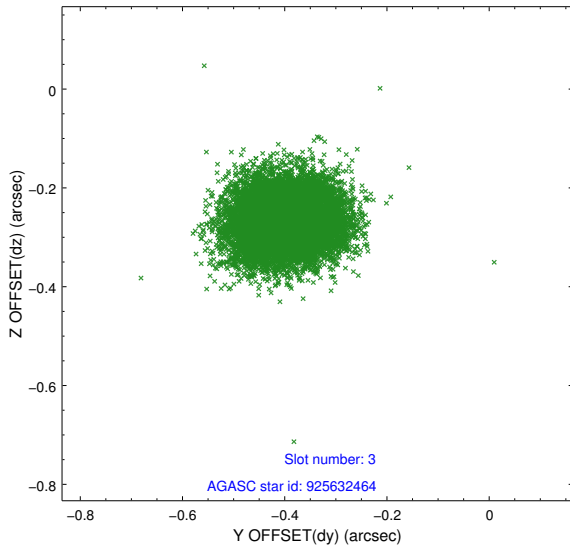
### Slot Statistics

slot	status	used	id	mag	n_pts	med_dy	med_dz	dr1	dr2	ra	dec	mean_y	mean_z
0	FID		ACIS-S-2	6.92	4911	-0.113	-0.076	0.008	0.016	0.000000	0.000000	-769.75	-1738.25
1	FID		ACIS-S-4	7.01	4911	0.154	0.047	0.008	0.013	0.000000	0.000000	2143.76	170.08
2	FID		ACIS-S-6	7.14	4911	-0.068	0.036	0.010	0.019	0.000000	0.000000	392.58	807.72
3	GUIDE	used	925632464	8.62	9822	-0.396	-0.267	0.079	0.124	88.809884	-32.517498	2234.63	1549.78
4	GUIDE	used	925642880	7.77	9820	0.095	-0.189	0.086	0.143	89.133148	-33.434507	-874.92	74.60
5	GUIDE	used	925643520	9.24	9811	0.129	0.034	0.113	0.195	88.970468	-33.727415	-1993.19	394.58
6	GUIDE	used	925645552	7.58	9822	0.007	-0.086	0.074	0.115	88.738097	-33.665766	-1881.92	1116.46
7	GUIDE	used	925645016	9.08	9819	0.155	0.510	0.103	0.173	89.945223	-33.615732	-1156.48	-2432.09

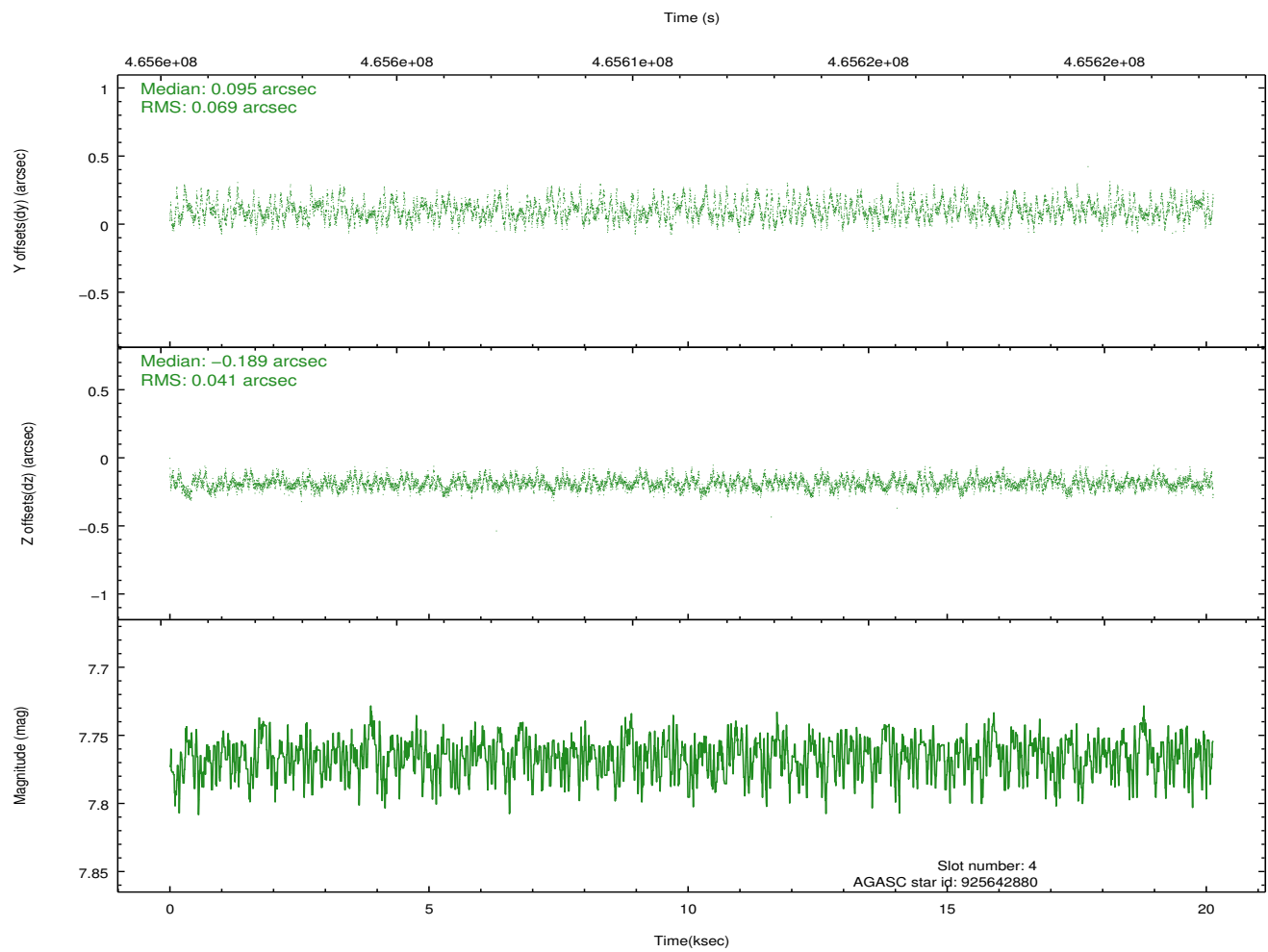
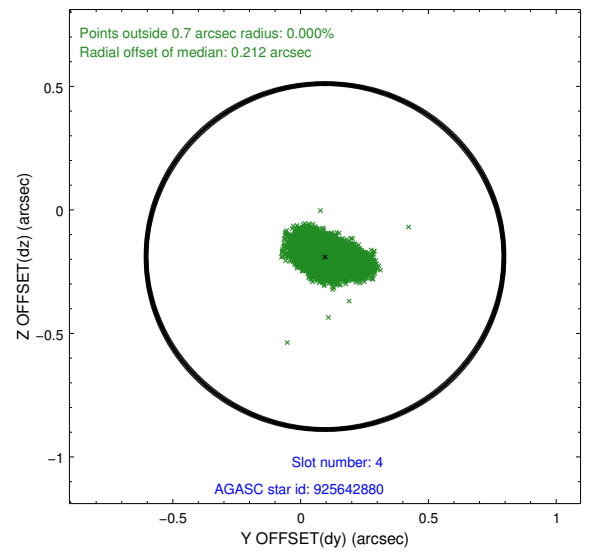
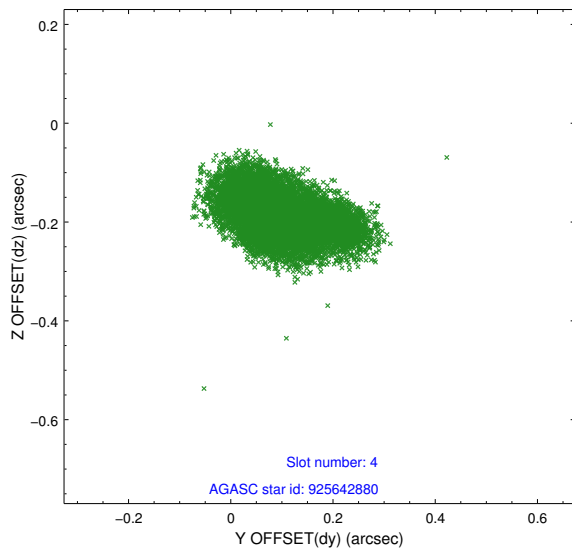
∞

## 2.4 Star Slots

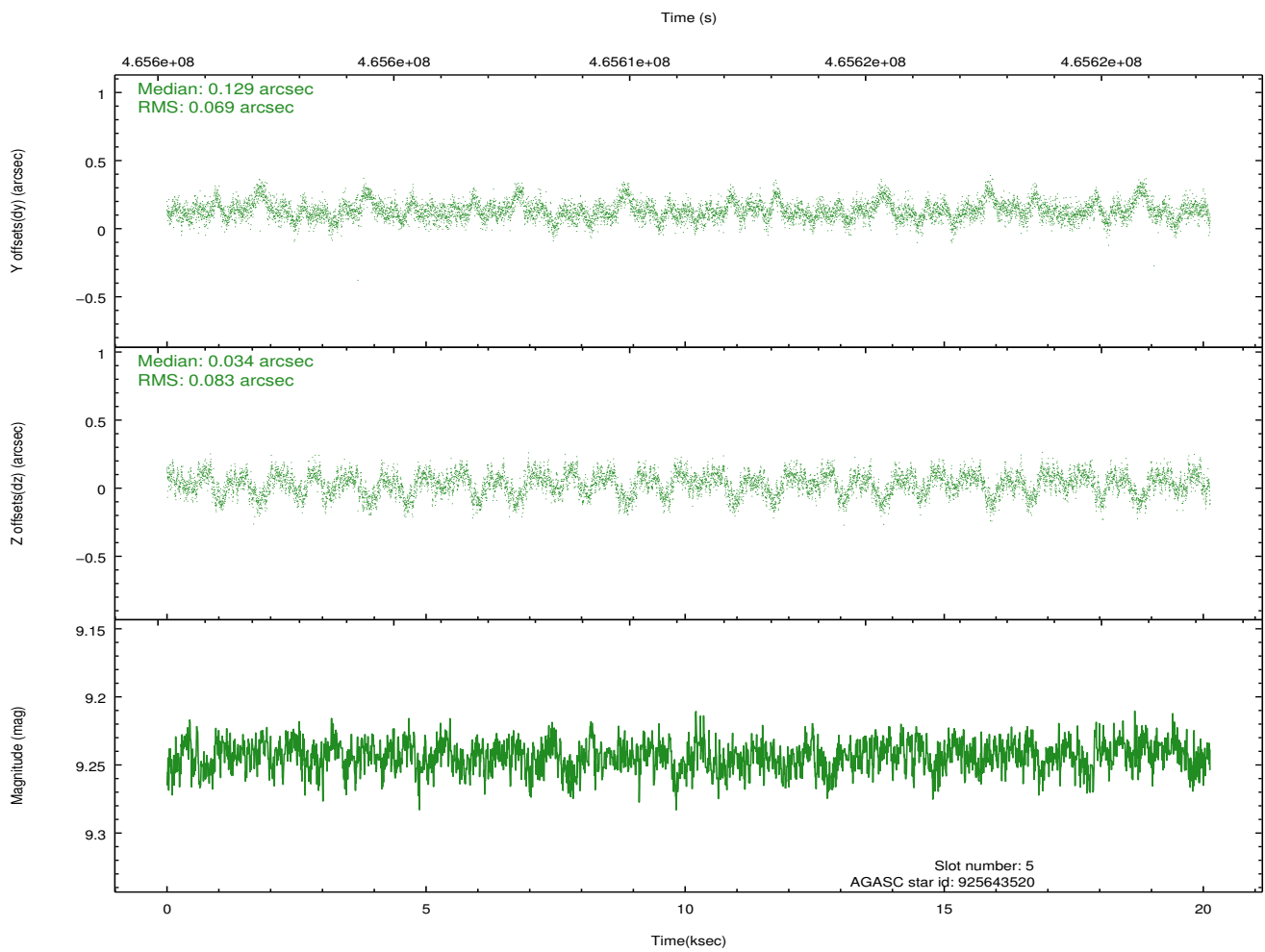
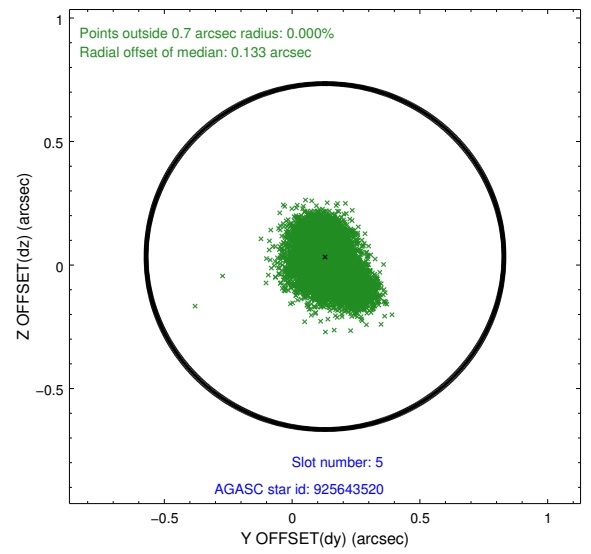
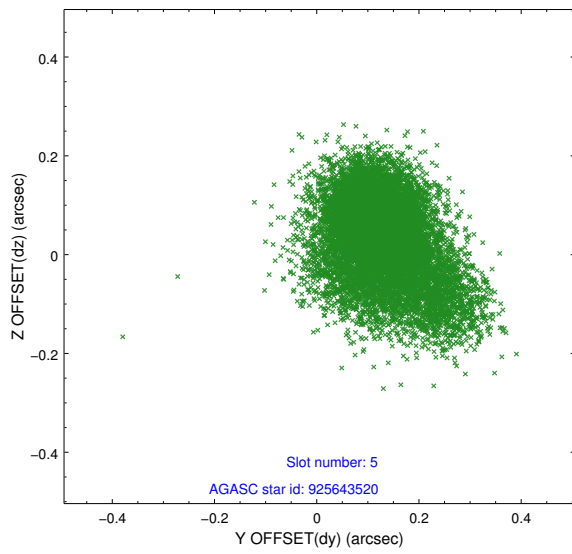
### 2.4.1 Slot 3



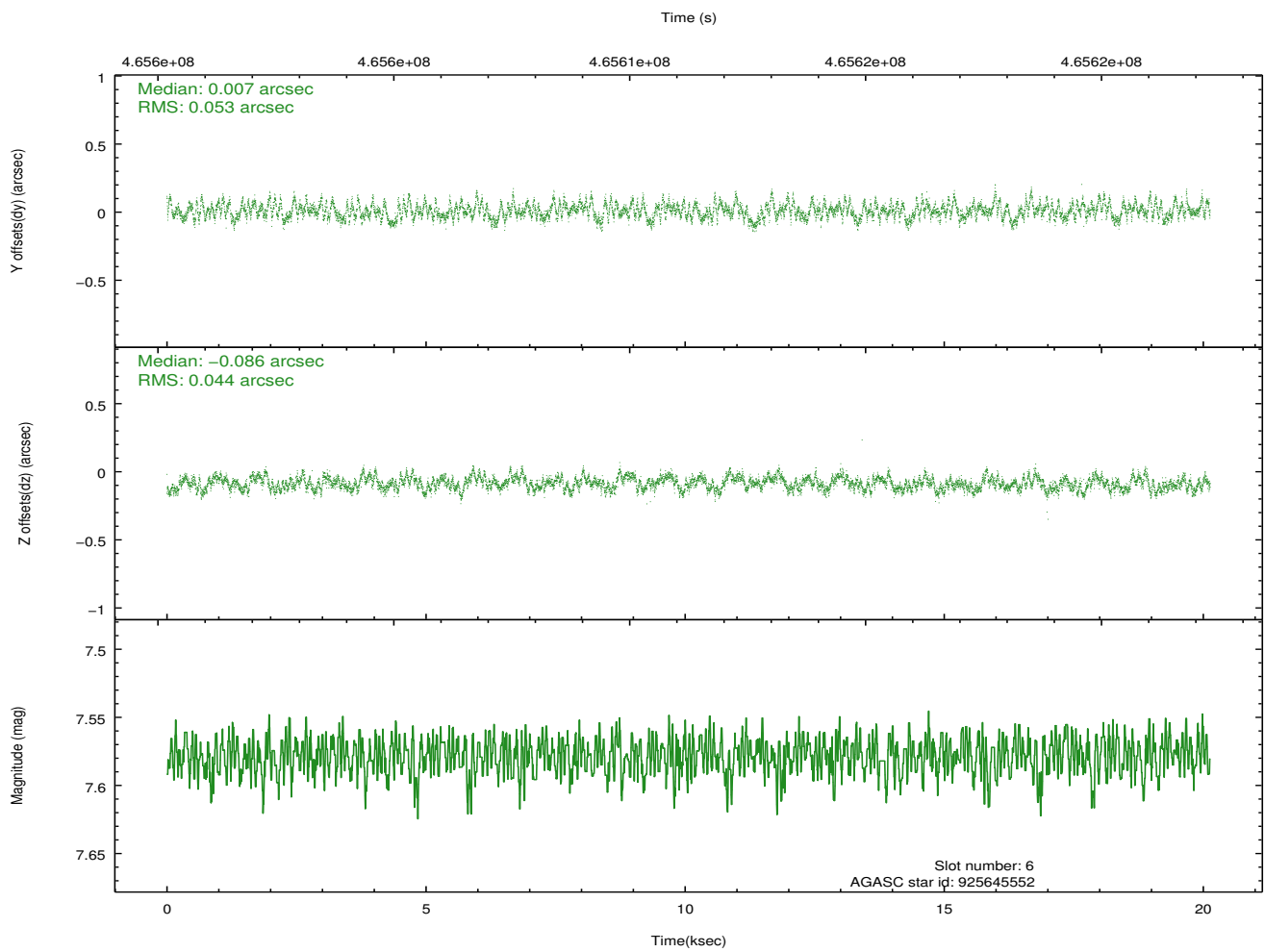
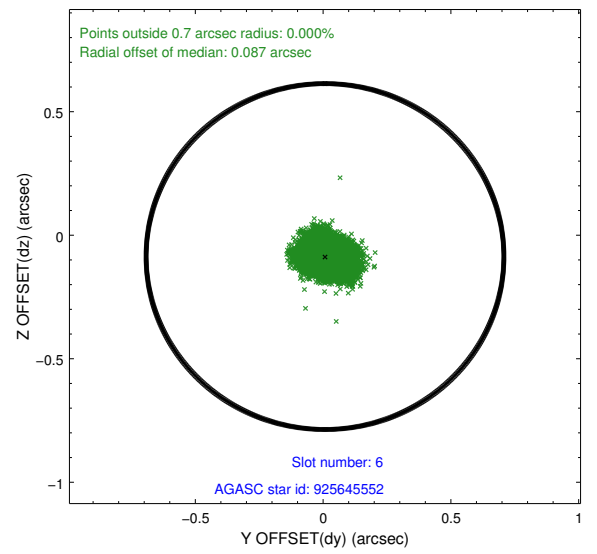
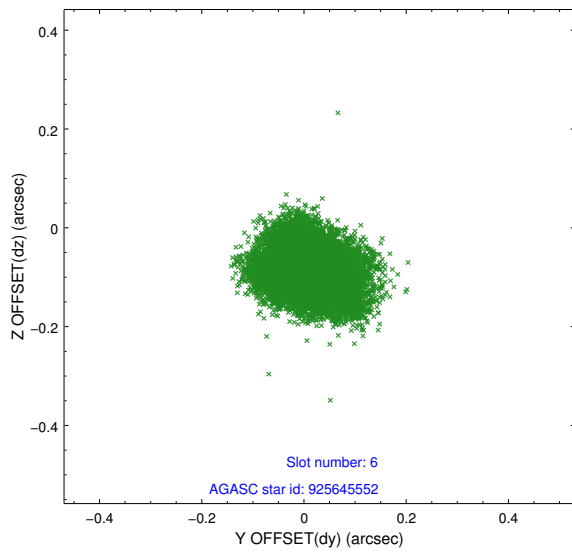
## 2.4.2 Slot 4



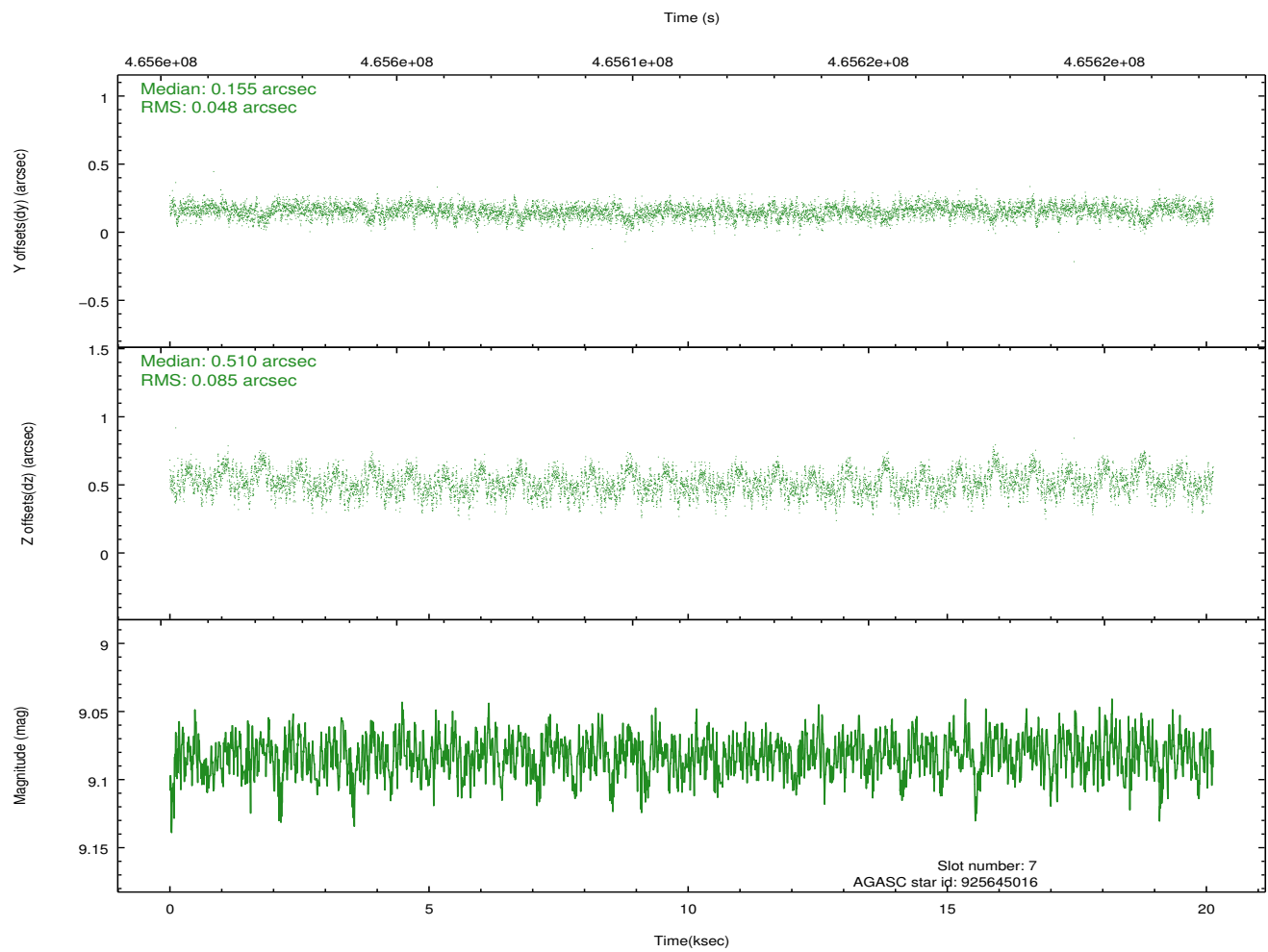
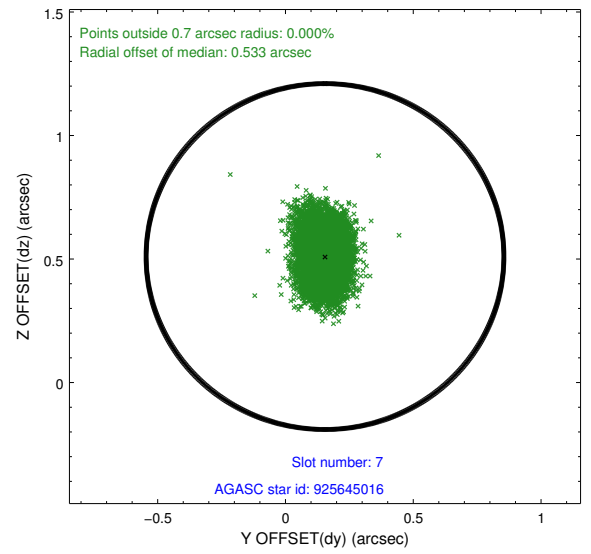
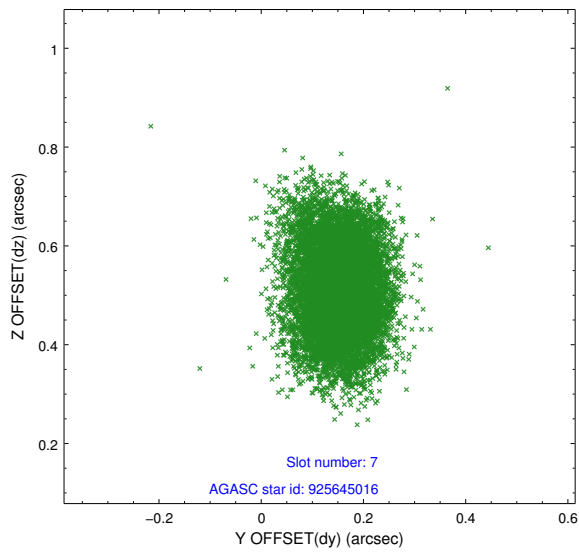
### 2.4.3 Slot 5



## 2.4.4 Slot 6

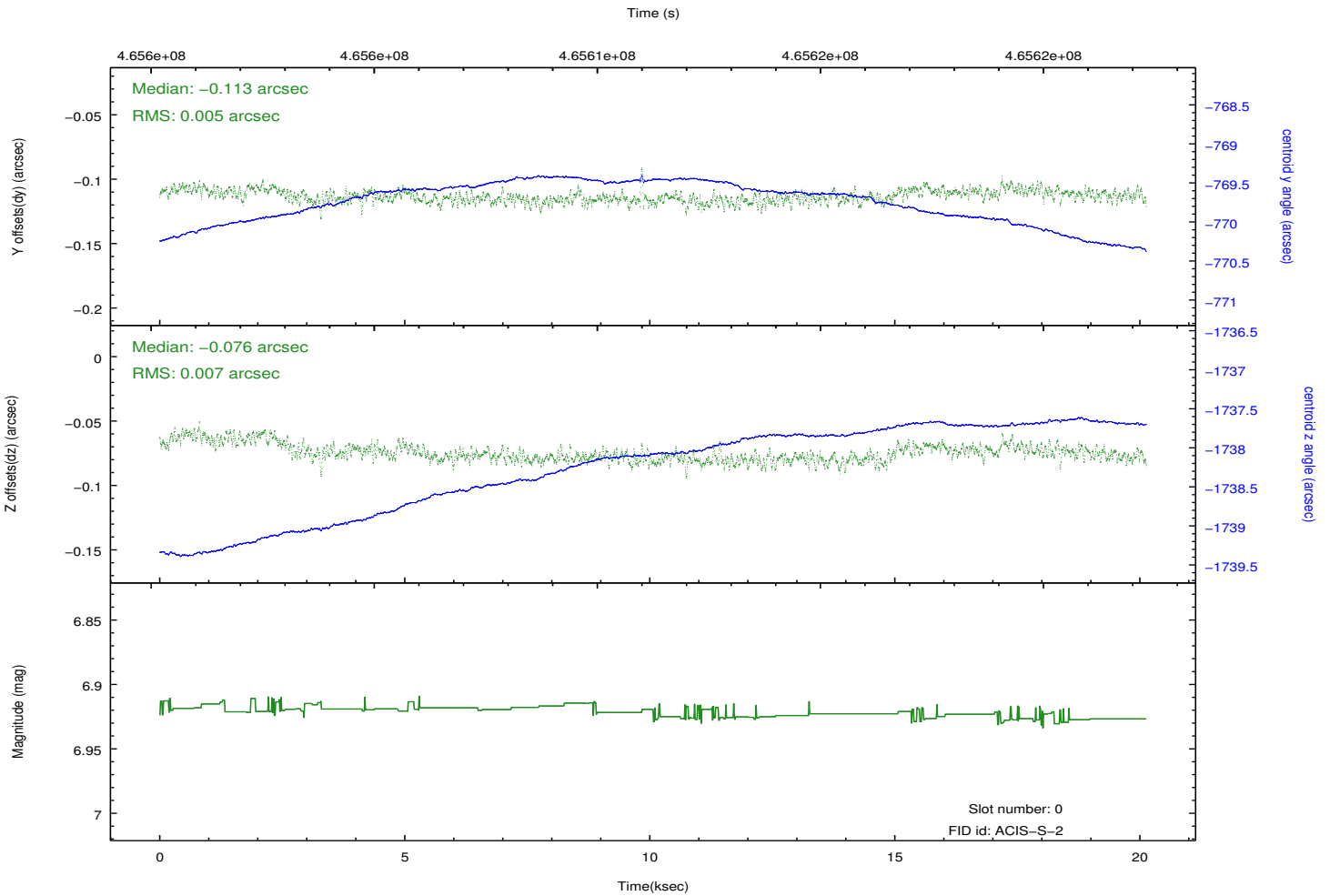
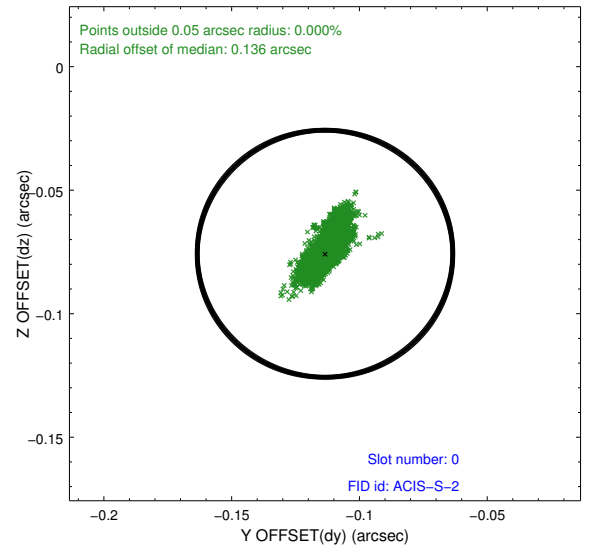
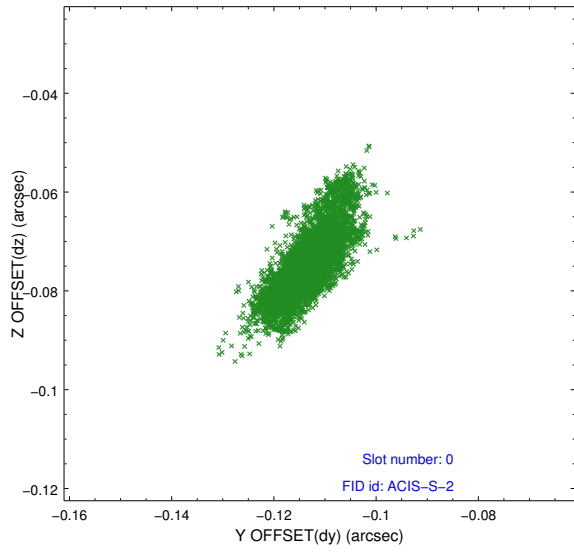


### 2.4.5 Slot 7

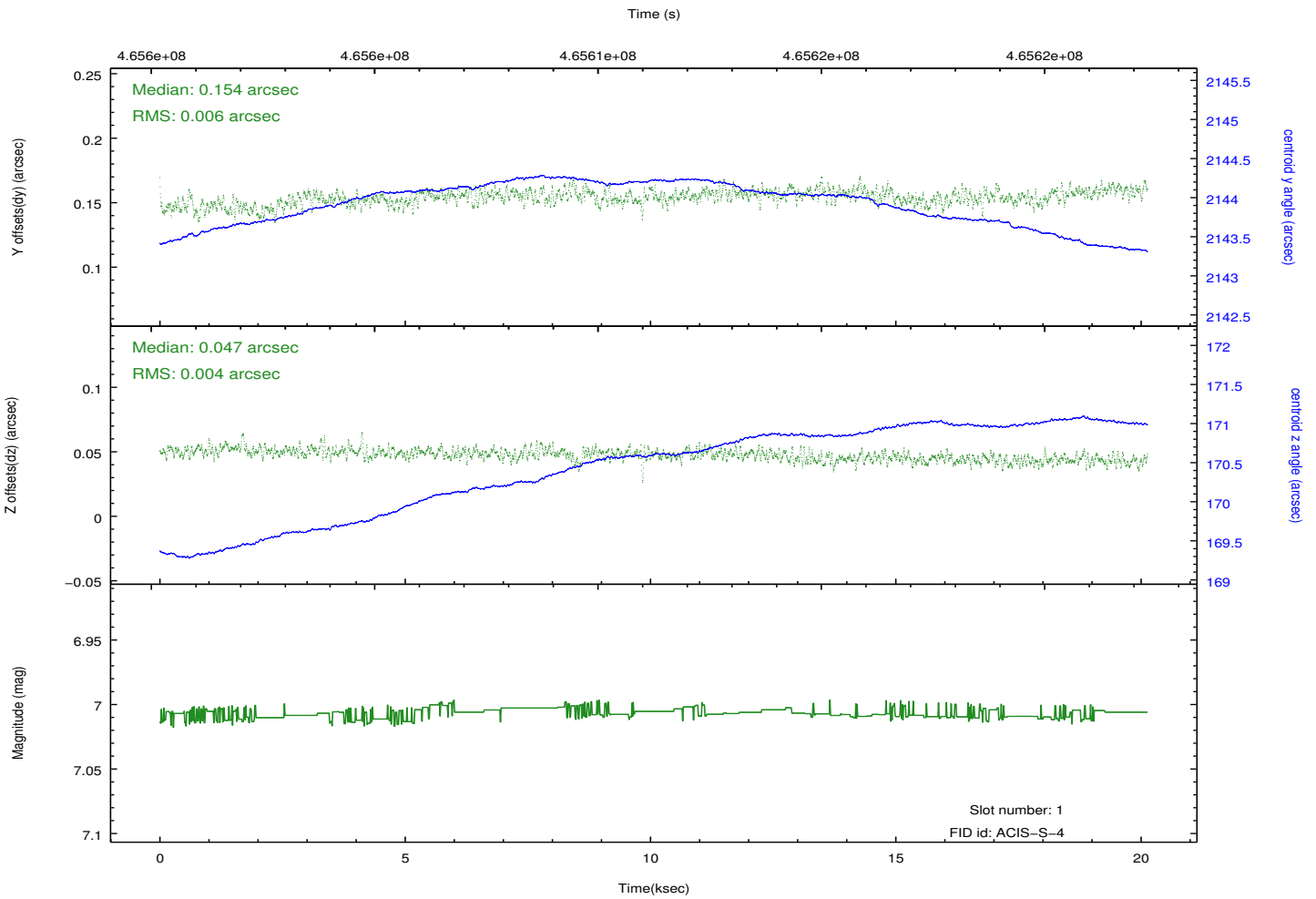
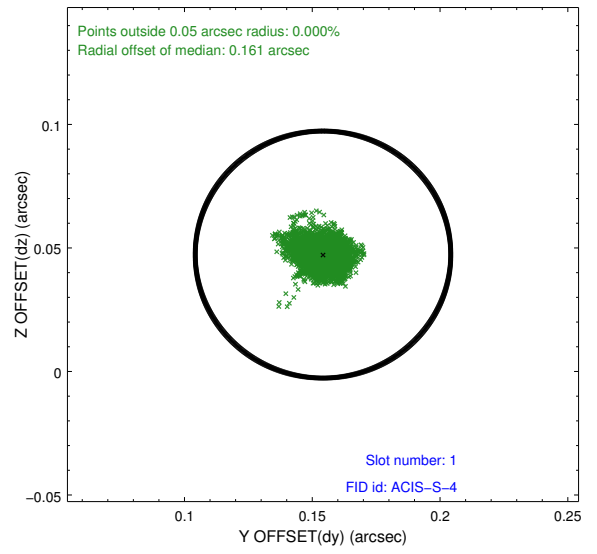
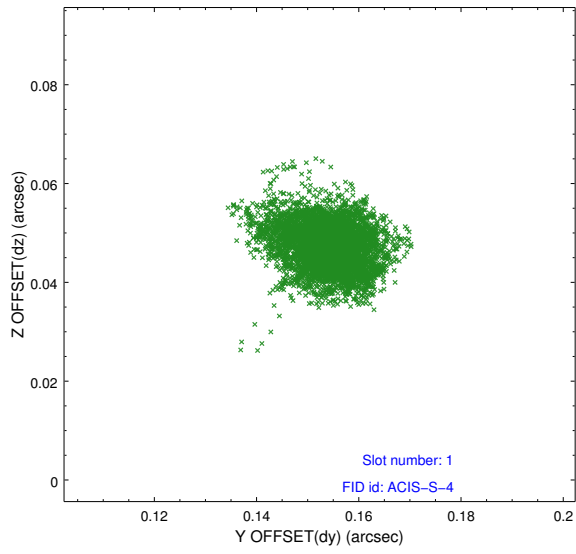


## 2.5 FID Slots

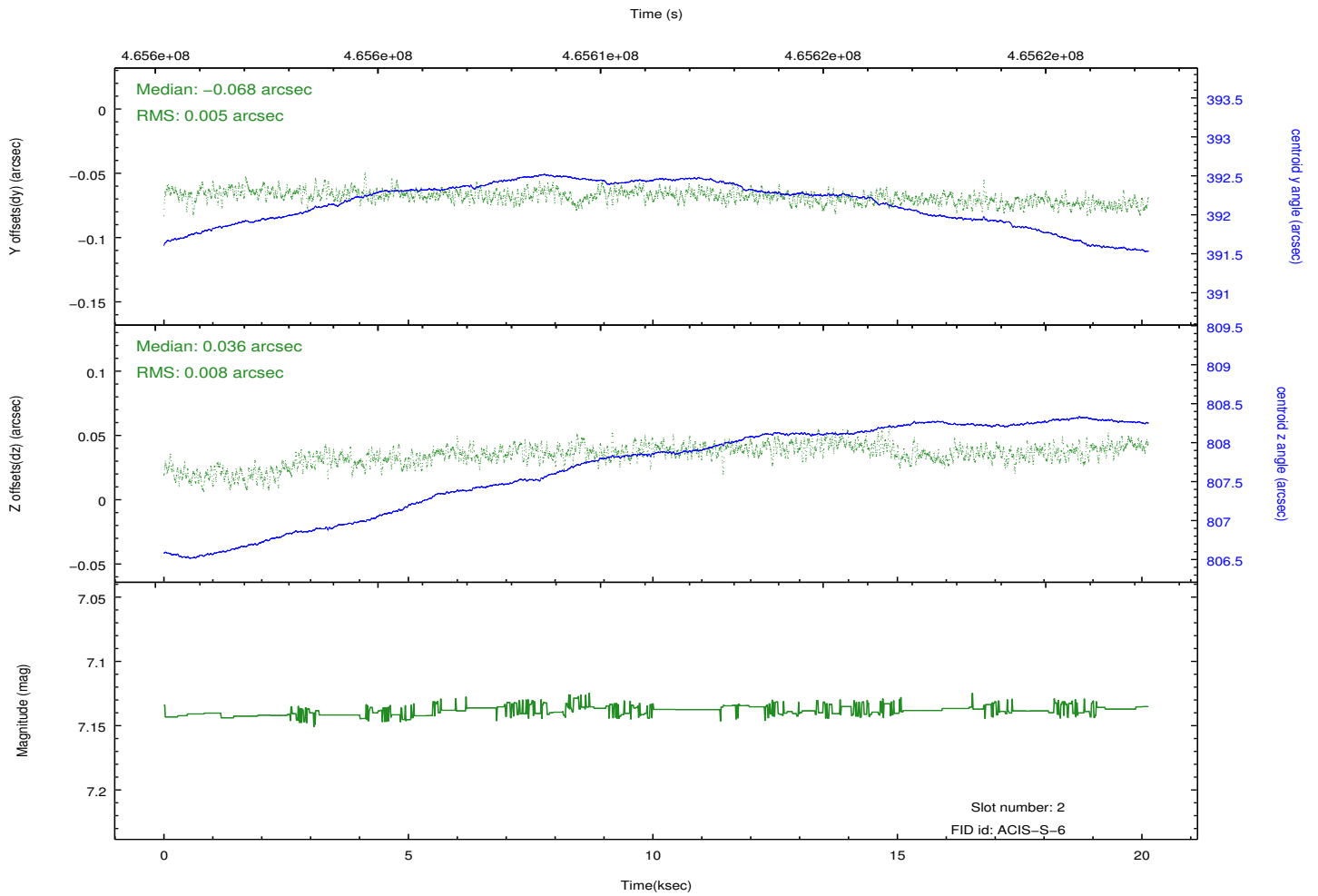
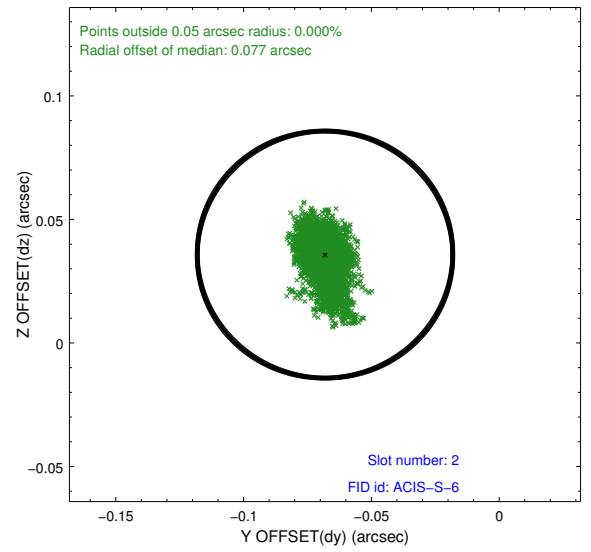
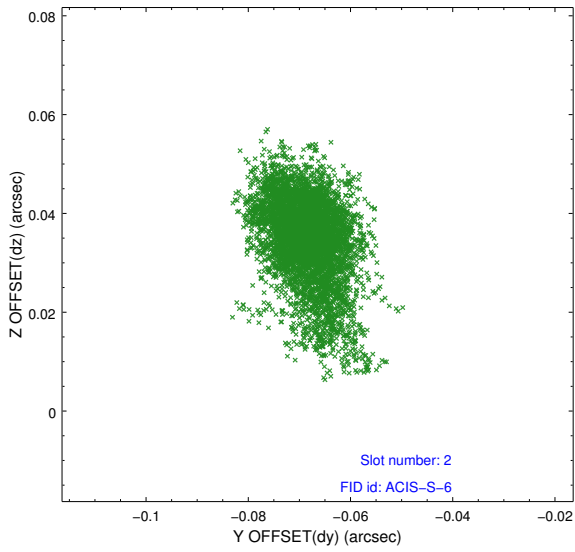
### 2.5.1 Slot 0



## 2.5.2 Slot 1



### 2.5.3 Slot 2



# A Summary

## A.1 Status

V&V Scientist	Jen Lauer
V&V Date (YYYY-MM-DD)	2014.12.02
V&V Edition	1
V&V Disposition and Status	OK
V&V Charge Time	20.070398803711

## A.2 Comments

Monitor constraint met.

=====

These data have been reprocessed with new aspect alignment calibration files that correct small mean offsets (up to 0.4 arcsecs) and improve overall astrometric accuracy. The new calibration was determined using data from the time period being reprocessed and was performed using cross-correlation of X-ray sources with radio and optical counterparts.