

V&V Reference Report

L2 ASCDS Version : 8.4.5

Observation 14444 - L2 Version 1
Chandra X-Ray Center

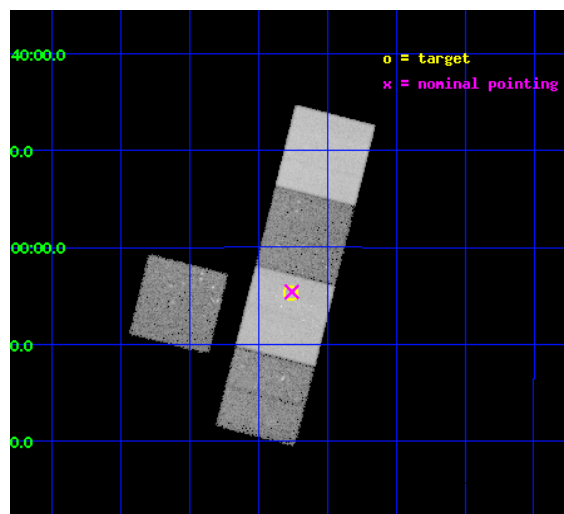
L2 Processing Date : Jun 9 2012

Contents

1	Front	2
2	OBI	3
2.1	OBI	3
2.1.1	Images	3
2.1.2	Bias	3
2.1.3	Parameters	4
2.1.4	Events	4
2.2	Compared Parameters	5
2.3	Aspect	6
2.4	Star Slots	9
2.4.1	Slot 3	9
2.4.2	Slot 4	10
2.4.3	Slot 5	11
2.4.4	Slot 6	12
2.4.5	Slot 7	13
2.5	FID Slots	14
2.5.1	Slot 0	14
2.5.2	Slot 1	15
2.5.3	Slot 2	16
A	Summary	17
A.1	Status	17
A.2	Comments	17

1 Front

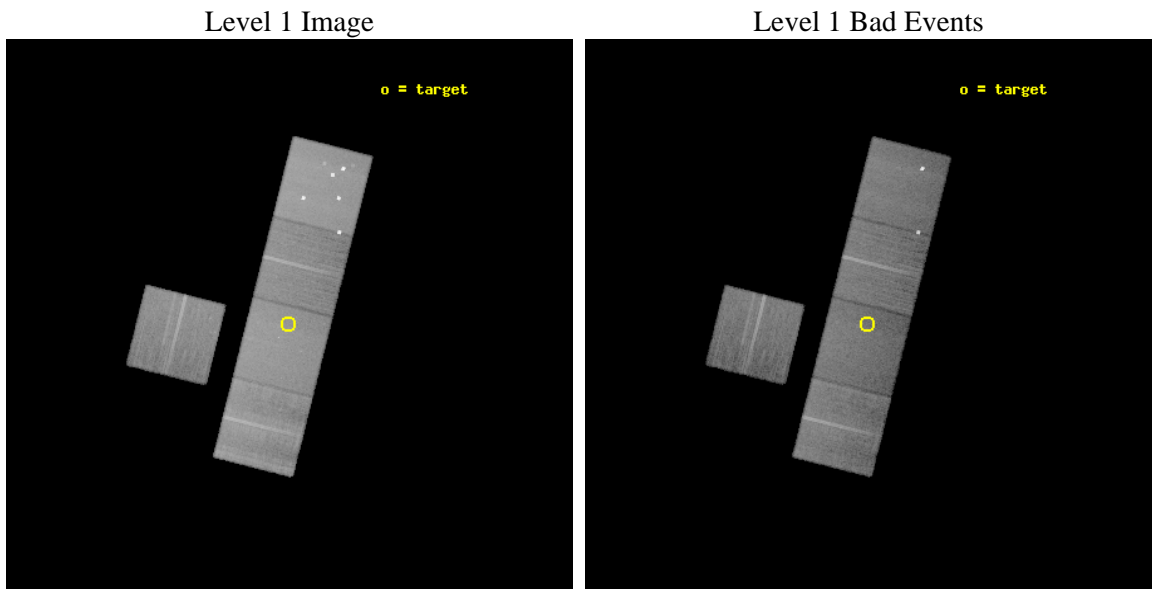
seq_num	200803	Sequence number
obs_id	14444	Observation id
title	A Close Look At Middle-Aged Coronae: The Nearby 2.5 Gyr Old Cluster Ruprecht 147	Proposal title
observer	Dr. Steven Saar	Principal investigator
object	Ruprecht 147	Source name
dtcycle	0	
cycle	P	events from which exps? Prim/Second/Both
ra_targ	289.192667	Observer's specified target RA [deg]
dec_targ	-16.077589	Observer's specified target Dec [deg]
ra_nom	289.18966746695	Nominal RA [deg]
dec_nom	-16.076646883739	Nominal Dec [deg]
roll_nom	104.15579441687	Nominal Roll [deg]
revision	1	Processing version of data
ontime	37063.600285053	Sum of GTIs [s]
livetime	36579.337061503	Livetime [s]
ontime3	37057.31819433	Sum of GTIs [s]
ontime5	37063.600285053	Sum of GTIs [s]
ontime6	37063.600285053	Sum of GTIs [s]
ontime7	37063.600285053	Sum of GTIs [s]
ontime8	37057.318184257	Sum of GTIs [s]
l2events	331521	Number of level 2 events



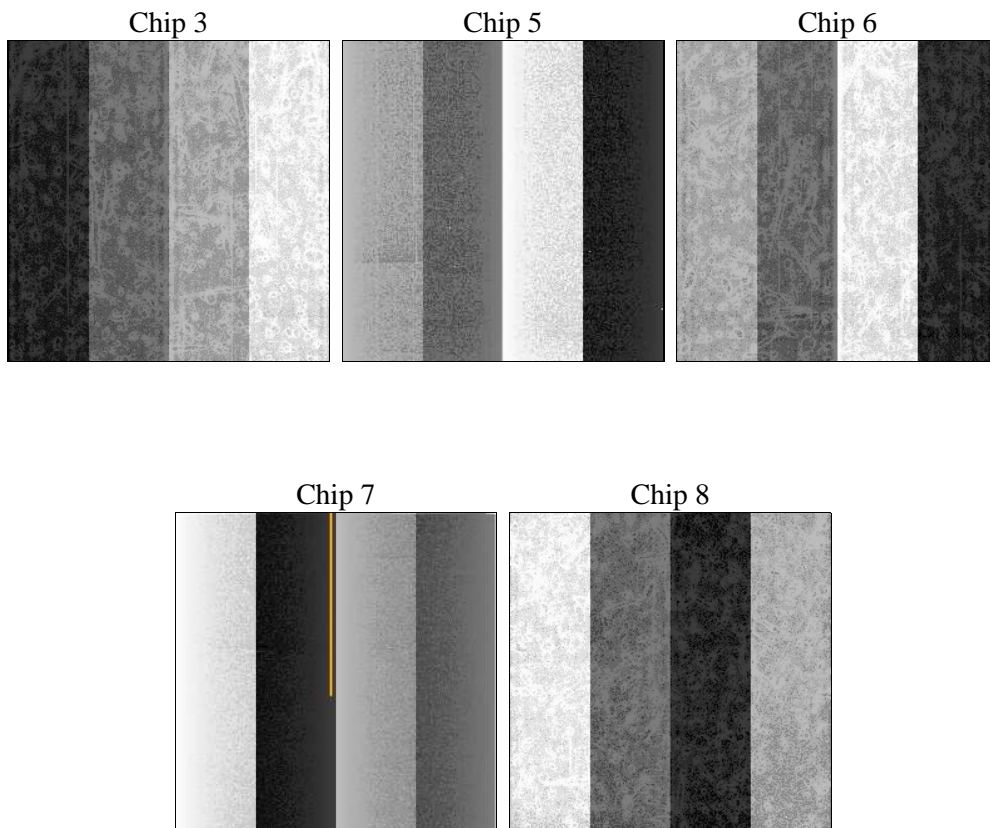
2 OBI

2.1 OBI

2.1.1 Images



2.1.2 Bias



2.1.3 Parameters

obi_num	0	Obi number	sched_exp_time	37000.000000	[s] Scheduled observation exposure time
ascdsver	8.4.5	Processing system revision	ontime	37063.600285053	Sum of GTIs [s]
caldbver	4.4.10	 	ontime3	37057.31819433	Sum of GTIs [s]
date	2012-06-10T00:17:31	Date and time of file creation	ontime5	37063.600285053	Sum of GTIs [s]
revision	1	Processing version of data	ontime6	37063.600285053	Sum of GTIs [s]
			ontime7	37063.600285053	Sum of GTIs [s]
			ontime8	37057.318184257	Sum of GTIs [s]
			l1events	1326482	Number of level 1 events

2.1.4 Events

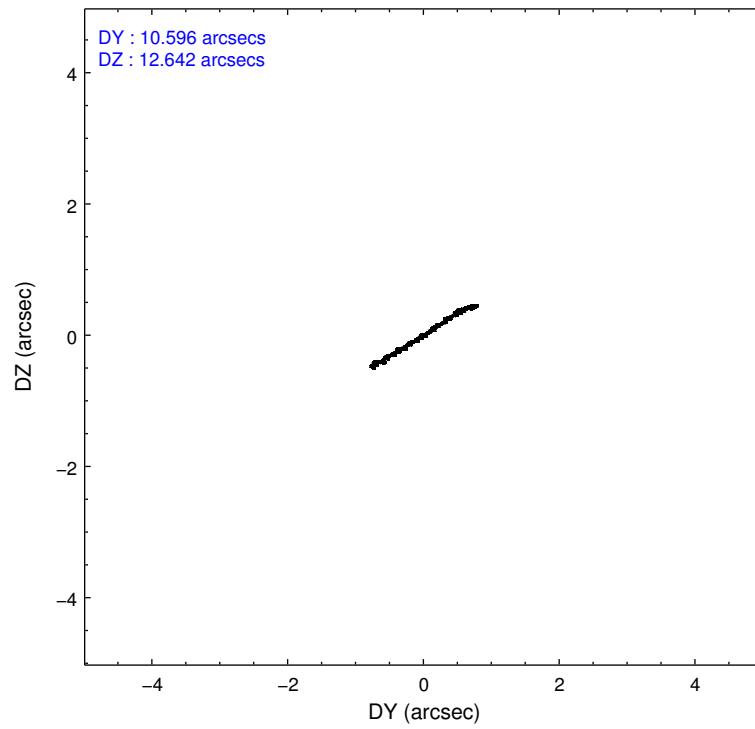
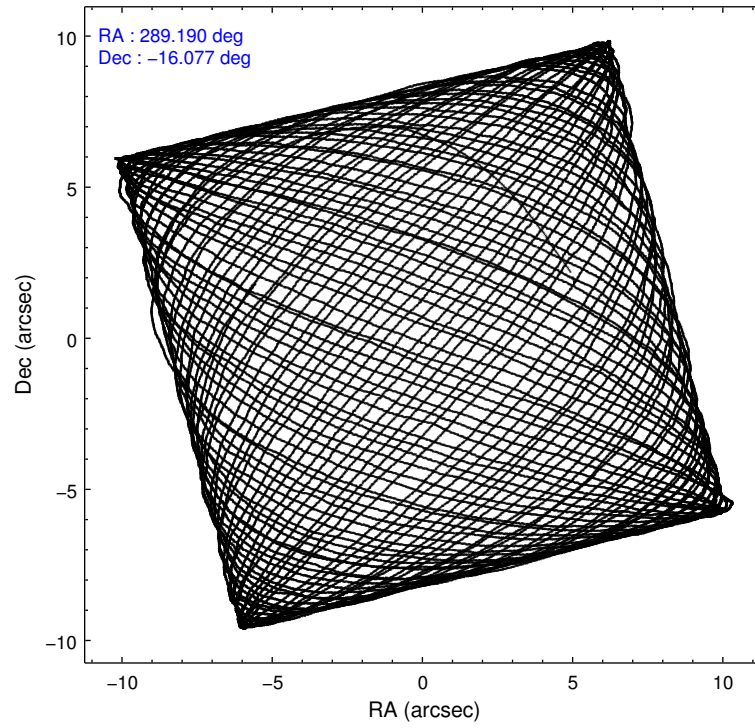
	ccd 3	ccd 5	ccd 6	ccd 7	ccd 8
level 1 events	198632	384217	205806	272557	265270
rejected events	175760	186164	181108	153351	195371
rejected %	88%	48%	87%	56%	73%

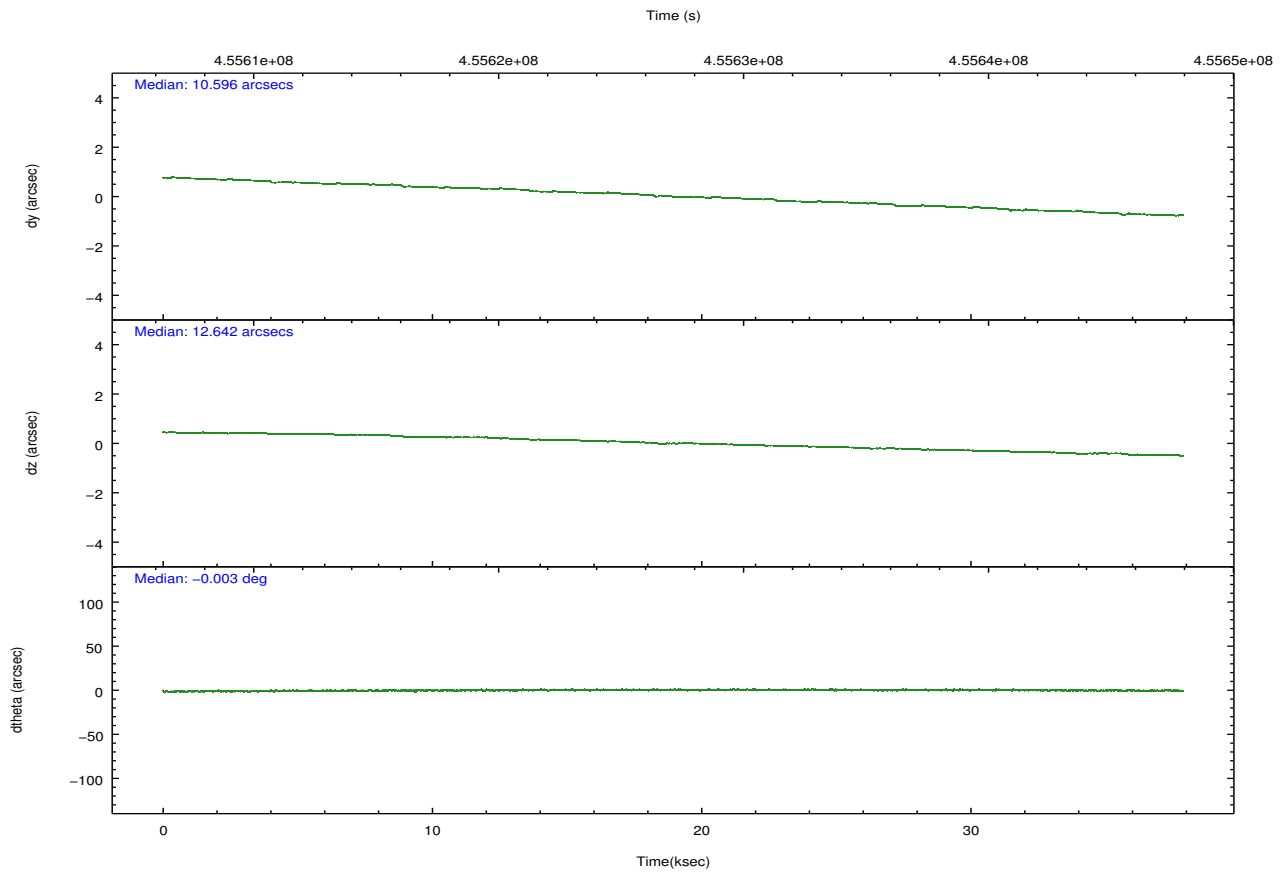
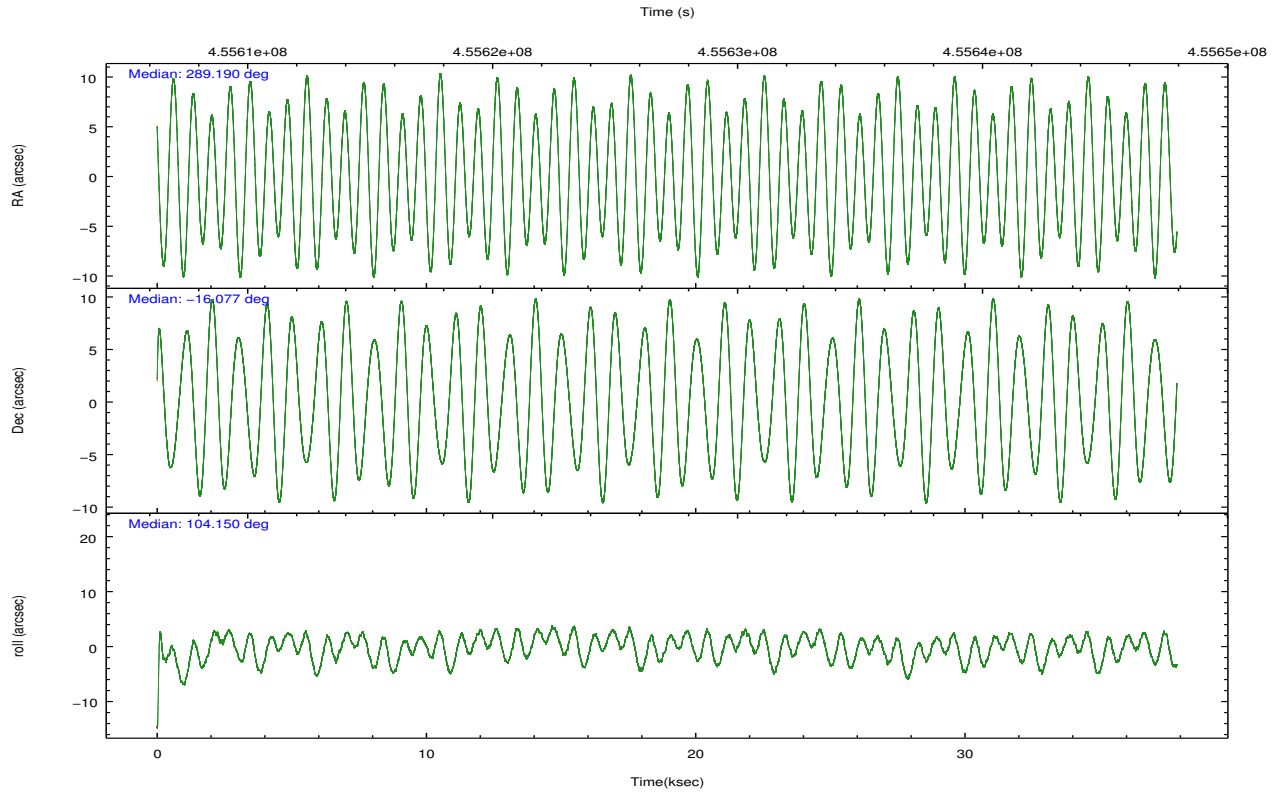
	ccd 3	ccd 5	ccd 6	ccd 7	ccd 8
grade 0 events	8571	44436	8900	10921	20113
	4%	11%	4%	4%	7%
grade 1 events	126	1149	106	310	211
	0%	0%	0%	0%	0%
grade 2 events	4872	50589	5395	24246	16411
	2%	13%	2%	8%	6%
grade 3 events	2385	6240	2418	9926	7462
	1%	1%	1%	3%	2%
grade 4 events	2392	5221	2454	9982	6953
	1%	1%	1%	3%	2%
grade 5 events	10244	27877	10316	27540	14370
	5%	7%	5%	10%	5%
grade 6 events	4652	91586	5535	64142	18964
	2%	23%	2%	23%	7%
grade 7 events	165390	157119	170682	125490	180786
	83%	40%	82%	46%	68%

2.2 Compared Parameters

Parameter	Planned	Actual	Parameter	Planned	Actual
Instrument	ACIS	ACIS	Obspar format version number	7	7
Detector	ACIS-35678	ACIS-35678	Obspar file type	PREDICTED	ACTUAL
Grating	NONE	NONE	Obspar update status	NONE	UPDATED
Data mode	VFAINT	VFAINT	Number of optional ACIS chips dropped	0	0
Observation mode	POINTING	POINTING	On-chip summing requested	N	N
[deg] Pointing RA	289.209780	289.1896674669549	Subarray requested	NONE	NONE
[deg] Pointing Dec	-16.095986	-16.07664688373925	Alternating exposures requested	N	N
[deg] Pointing Roll	104.004741	104.155794416868	[s] Primary exposure time	0.000000	3.1
[mm] SIM focus pos	-0.684267	-0.6828225247311905			
[mm] SIM defocus	0	0.001444936568705701			
[mm] SIM translation stage pos	-190.132523	-190.1400660498719			
[mm] SIM translation stage offset	0	0.00754346686406393			
[s] Observation start time (MET)	455609064.184000	455606662.93856			
Observation start date	2012-06-09T06:03:18	2012-06-09T05:24:22			
[s] Observation end time (MET)	455646064.184000	455646659.4657			
Observation end date	2012-06-09T16:19:58	2012-06-09T16:30:59			
Read mode	TIMED	TIMED			

2.3 Aspect



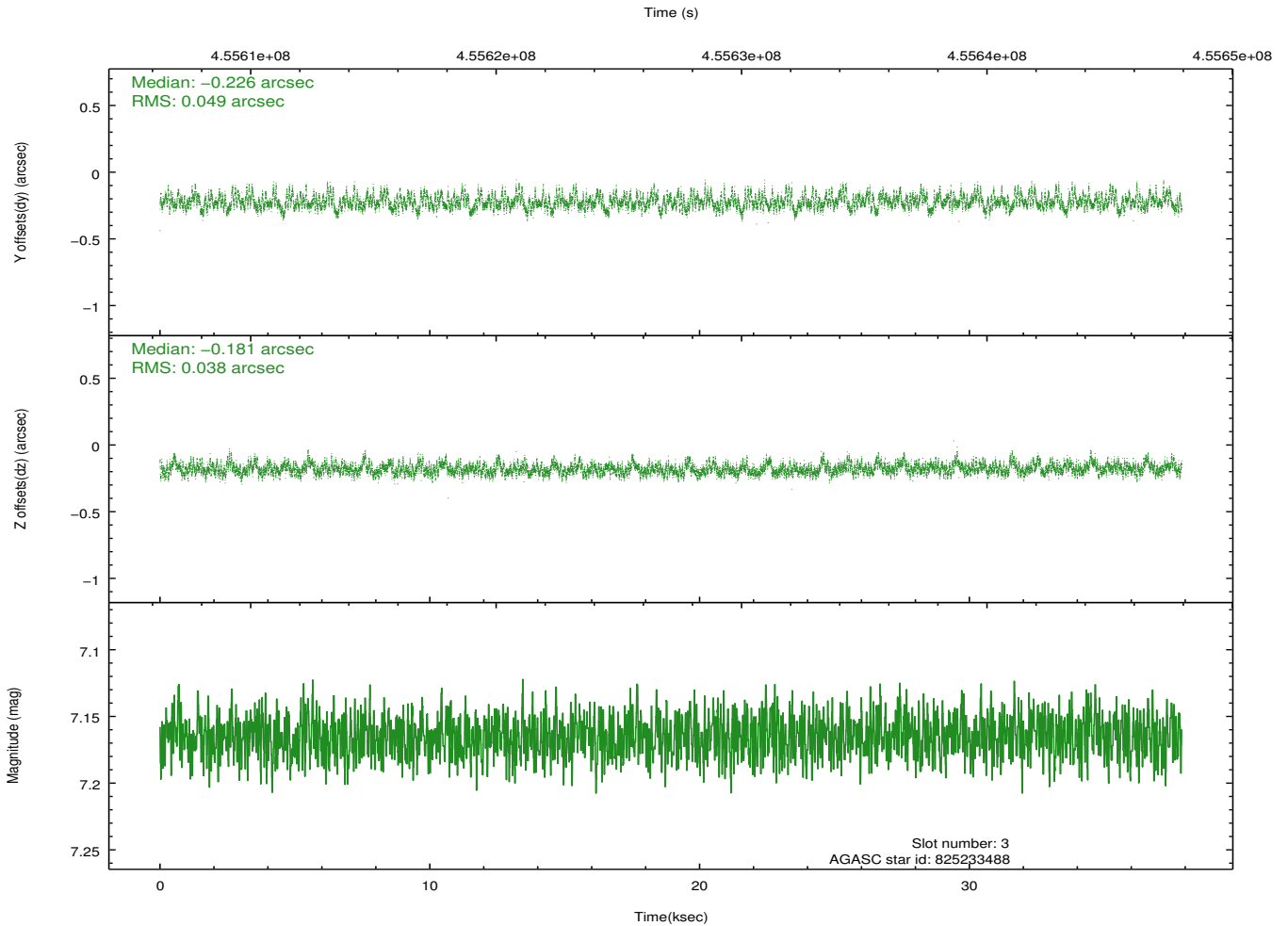
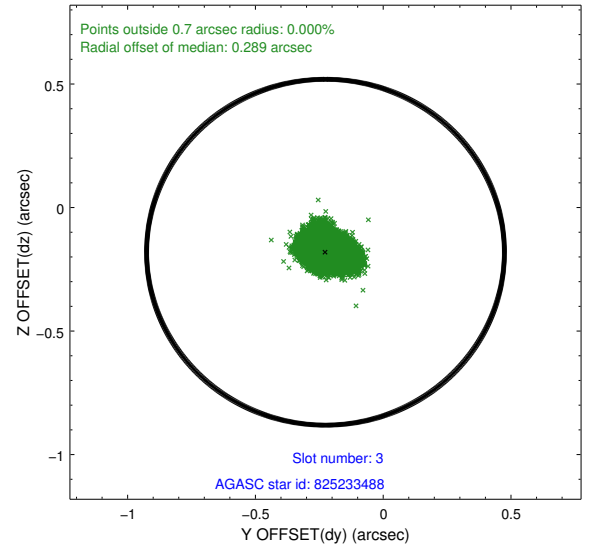
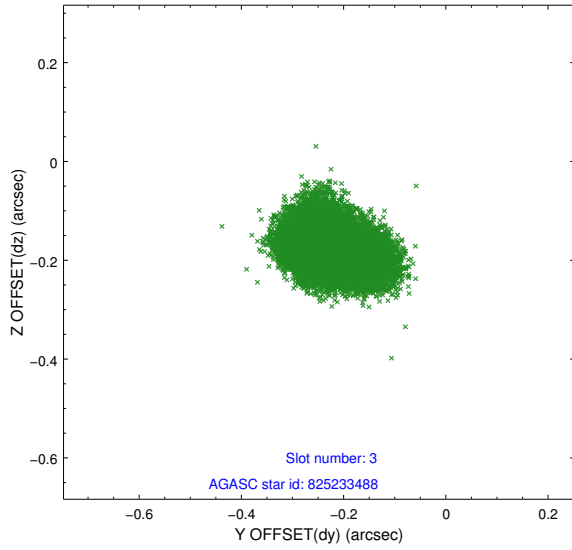


Slot Statistics

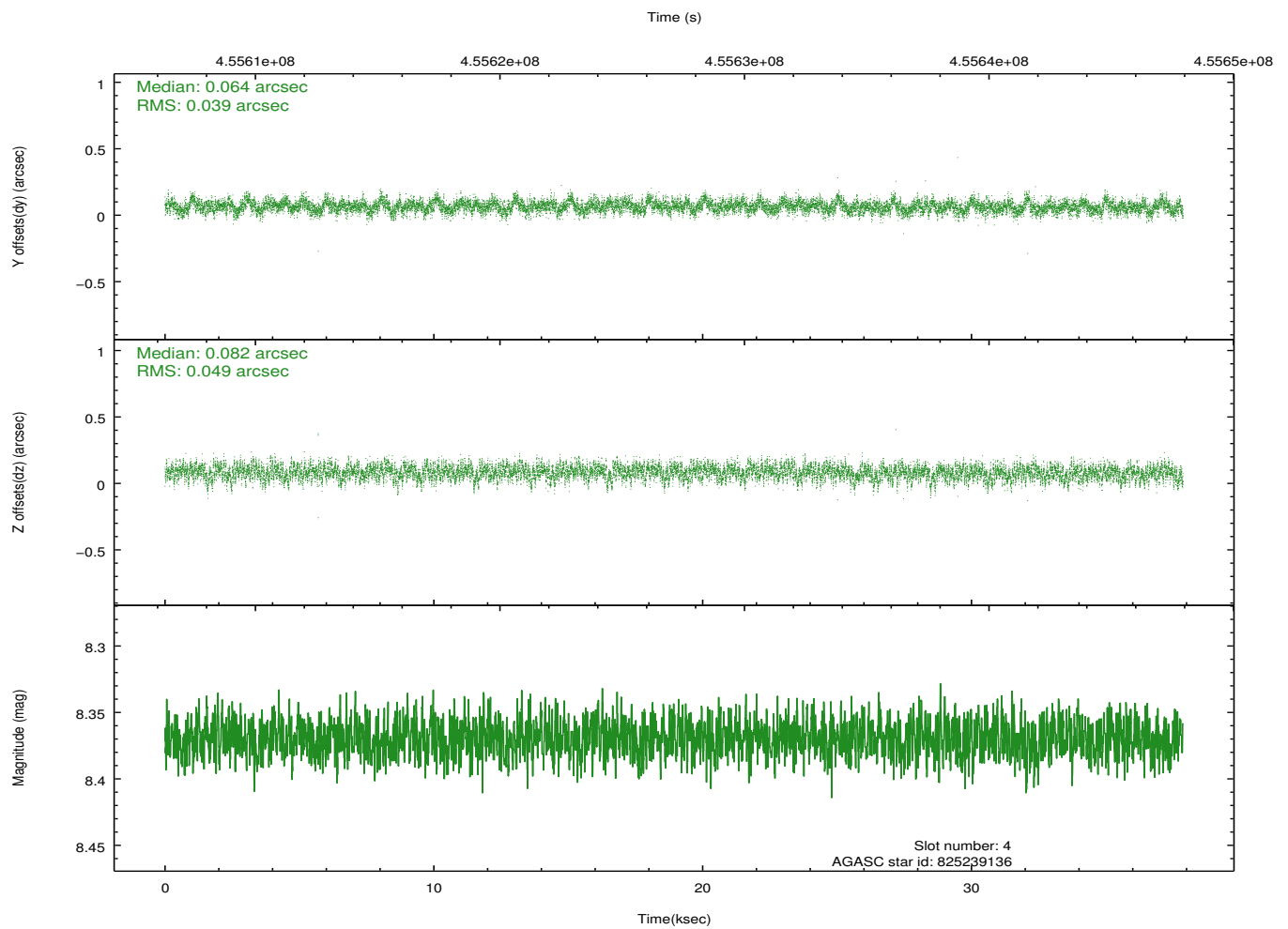
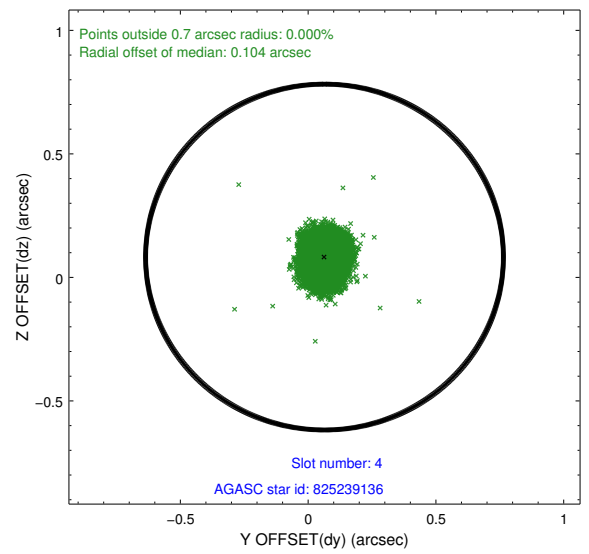
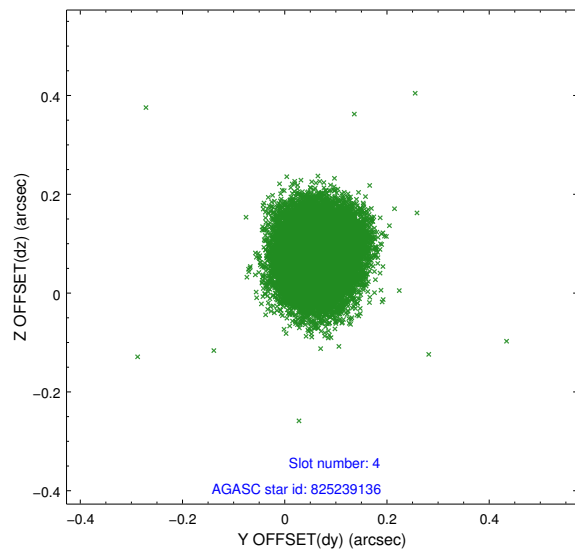
slot	status	id	mag	n_pts	med_dy	med_dz	dr1	dr2	ra	dec	mean_y	mean_z
0	FID	ACIS-S-2	6.99	9236	-0.063	-0.060	0.009	0.014	0.000000	0.000000	-763.55	-1734.01
1	FID	ACIS-S-4	7.08	9237	0.211	0.046	0.014	0.024	0.000000	0.000000	2150.02	174.49
2	FID	ACIS-S-5	7.11	9238	-0.179	0.022	0.013	0.023	0.000000	0.000000	-1816.45	168.24
3	GUIDE	825233488	7.16	18475	-0.226	-0.181	0.066	0.107	288.858824	-16.099181	281.27	1180.90
4	GUIDE	825239136	8.37	18459	0.064	0.082	0.066	0.108	289.540762	-16.272873	-895.39	-955.23
5	GUIDE	825242728	8.84	18465	0.289	0.183	0.080	0.130	289.573015	-15.832540	615.10	-1449.51
6	GUIDE	825230776	8.16	18472	-0.180	-0.373	0.072	0.114	288.511386	-15.901592	1259.92	2177.67
7	GUIDE	825236416	8.54	18468	0.047	0.288	0.069	0.112	289.559992	-16.689617	-2366.64	-654.01

2.4 Star Slots

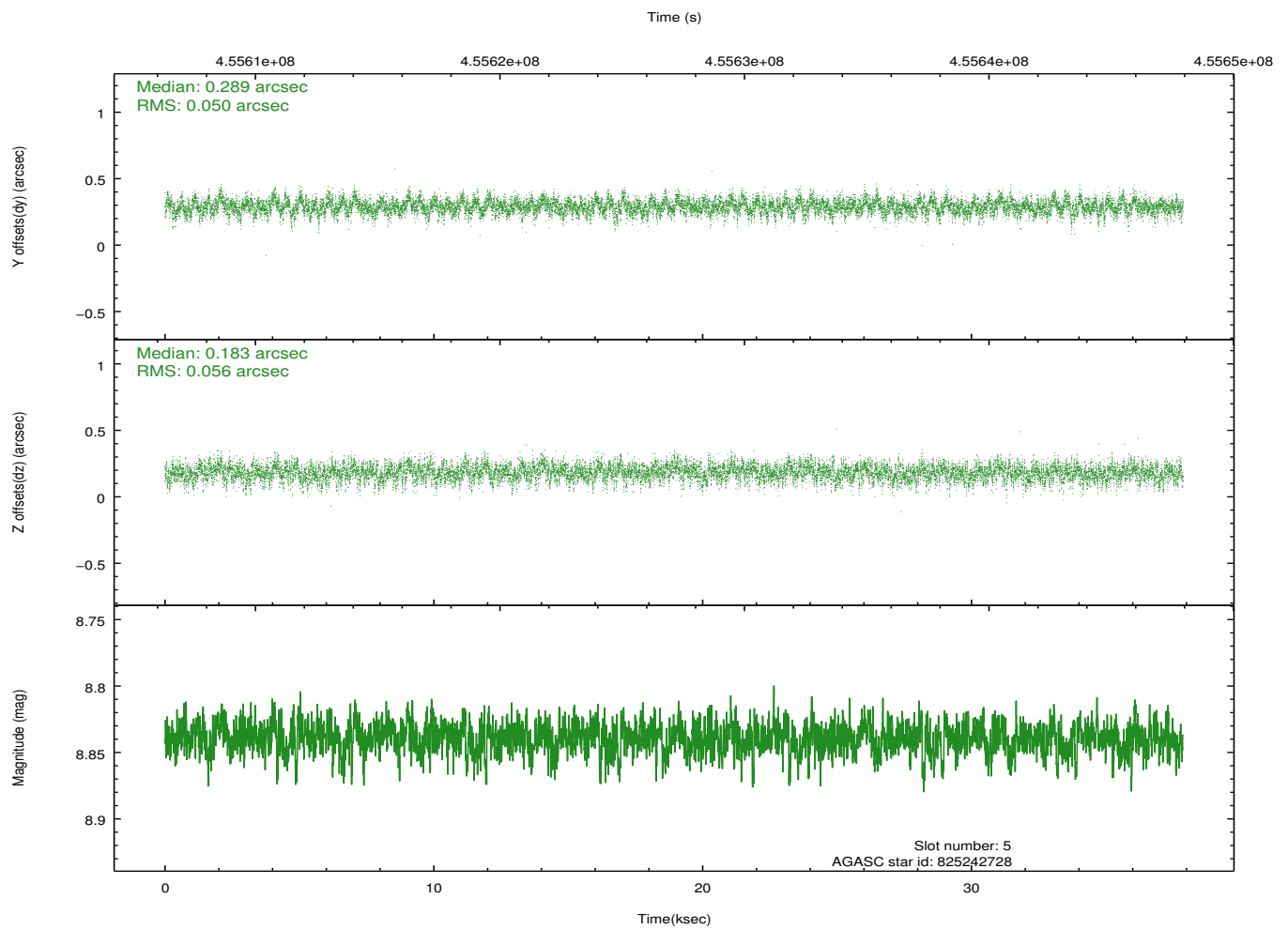
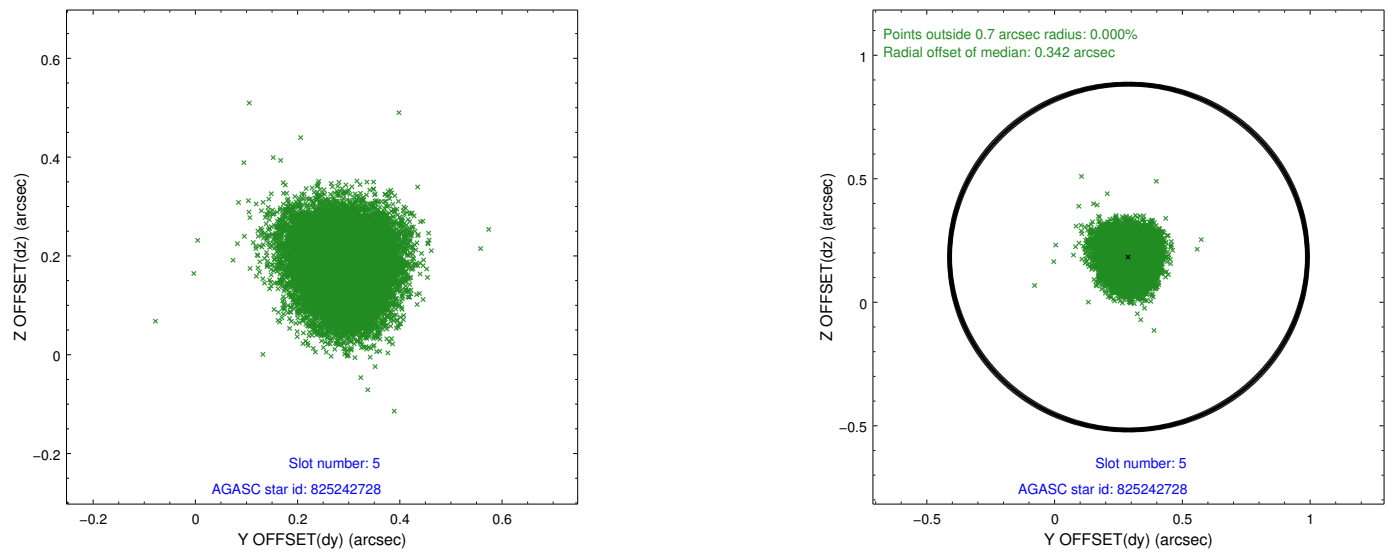
2.4.1 Slot 3



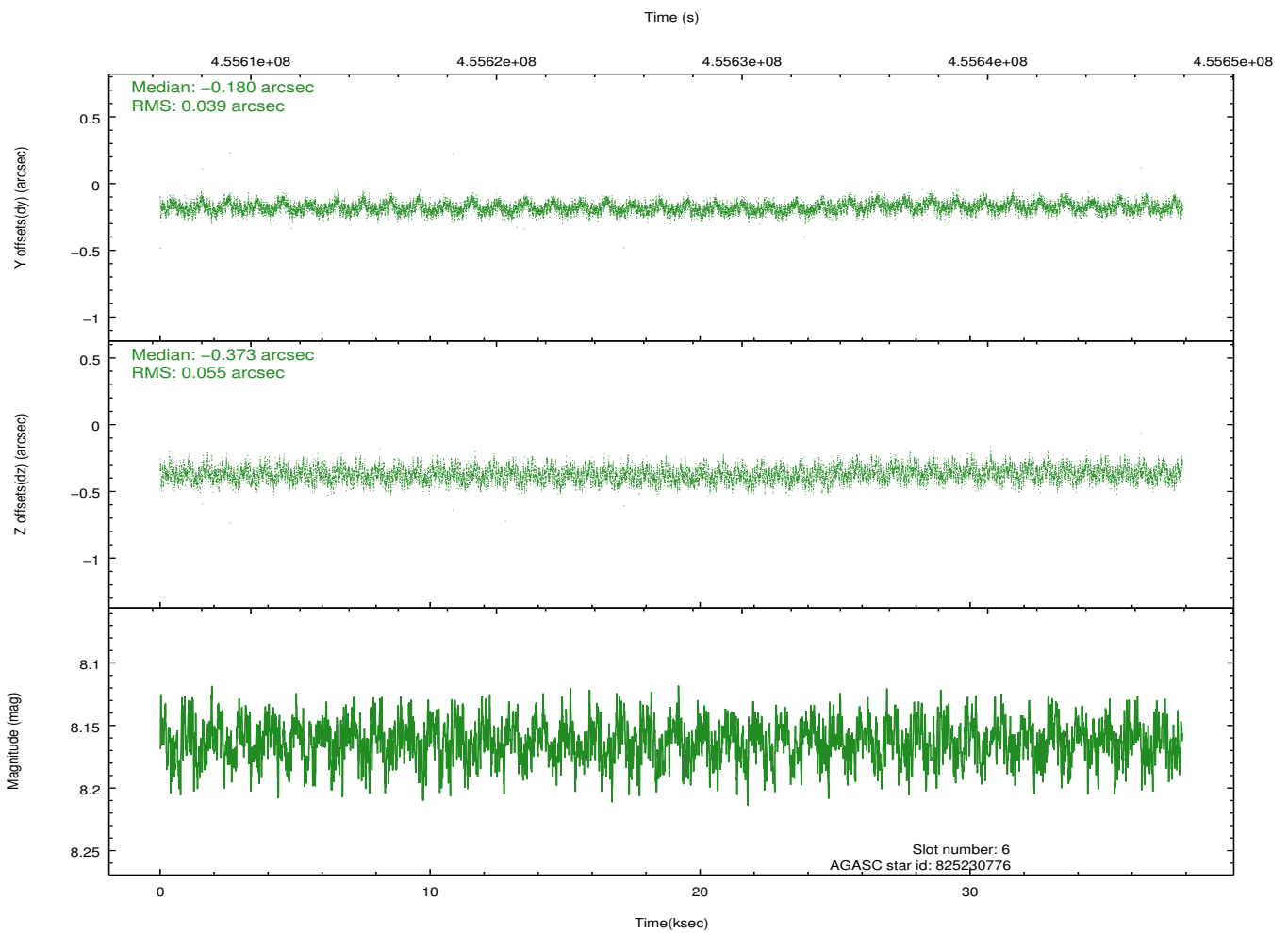
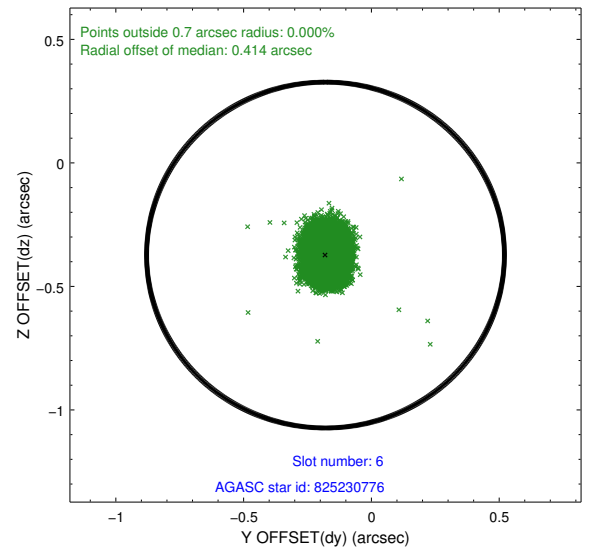
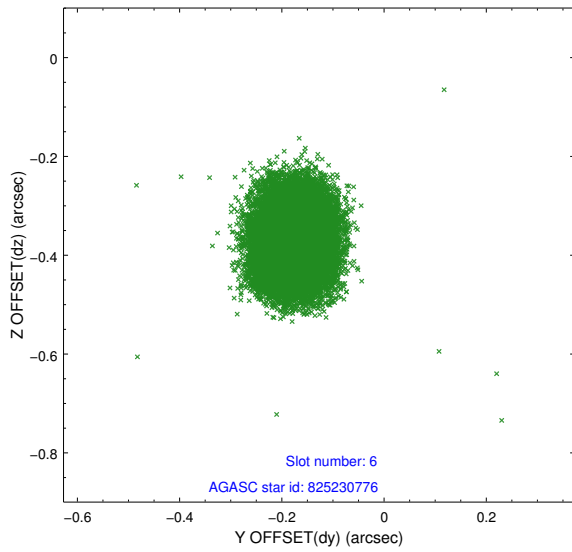
2.4.2 Slot 4



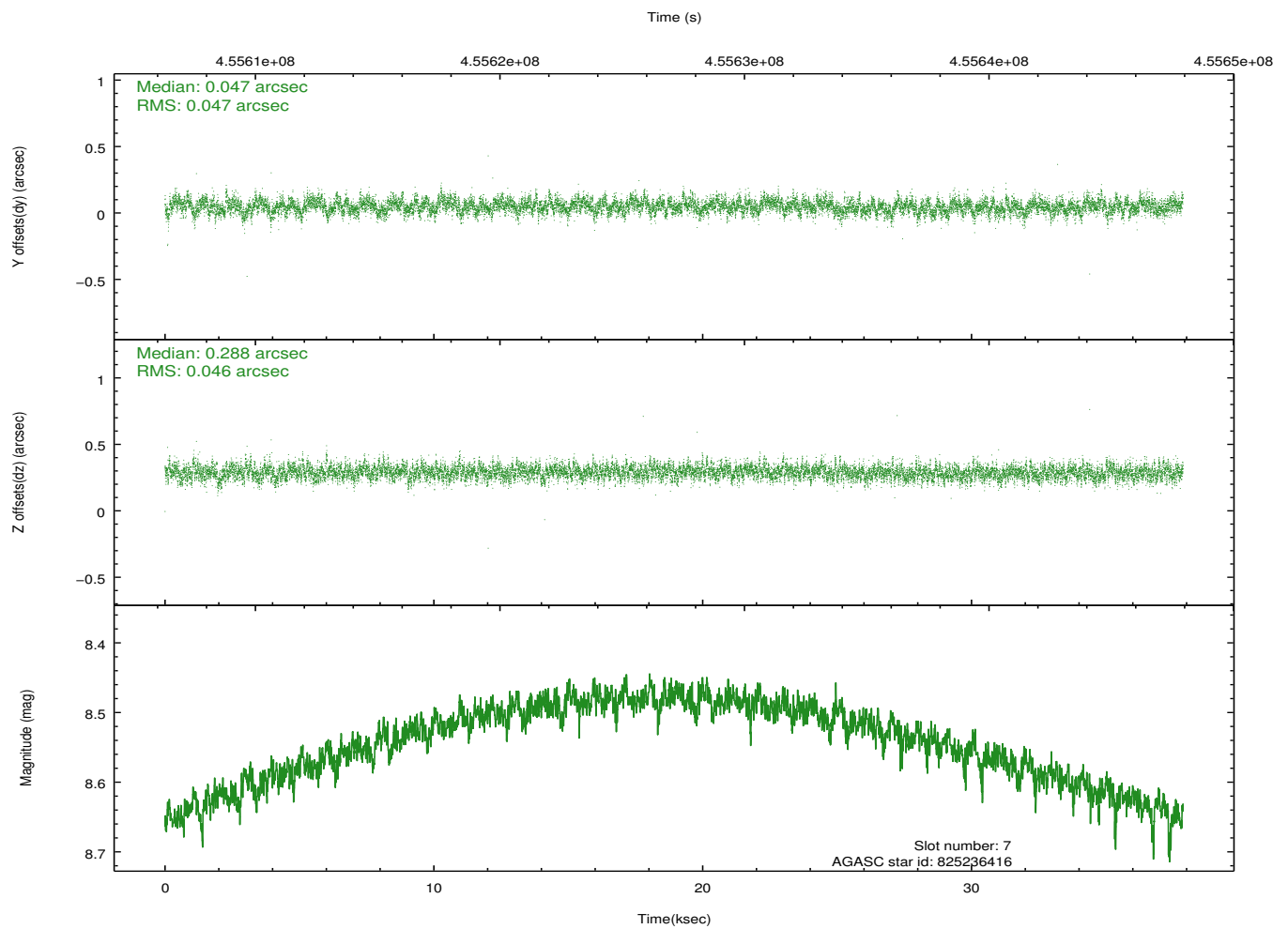
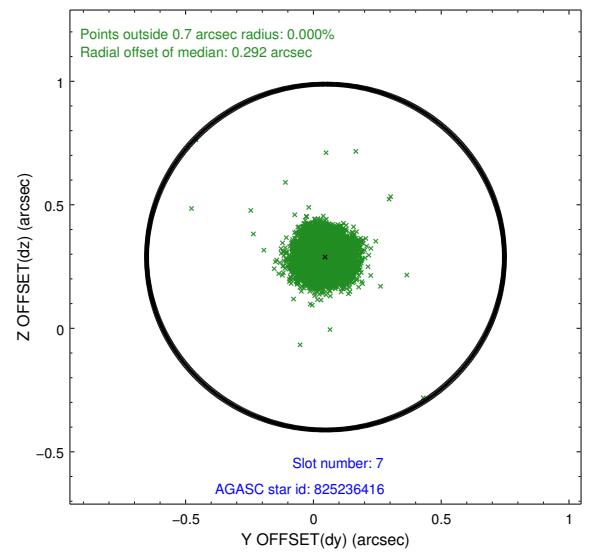
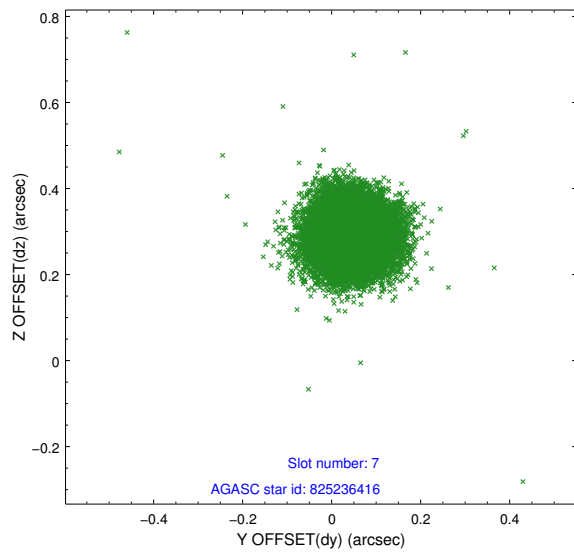
2.4.3 Slot 5



2.4.4 Slot 6

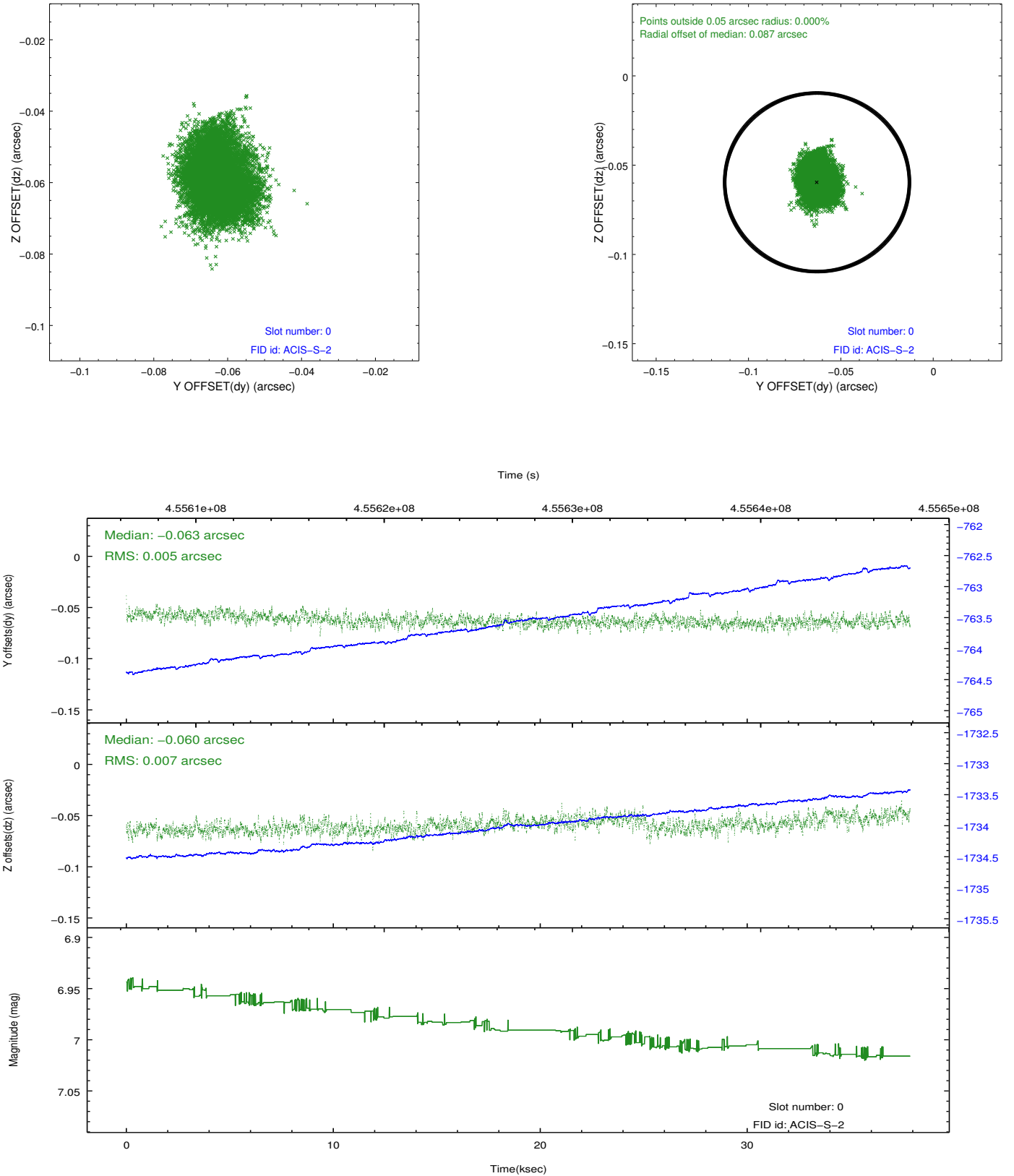


2.4.5 Slot 7

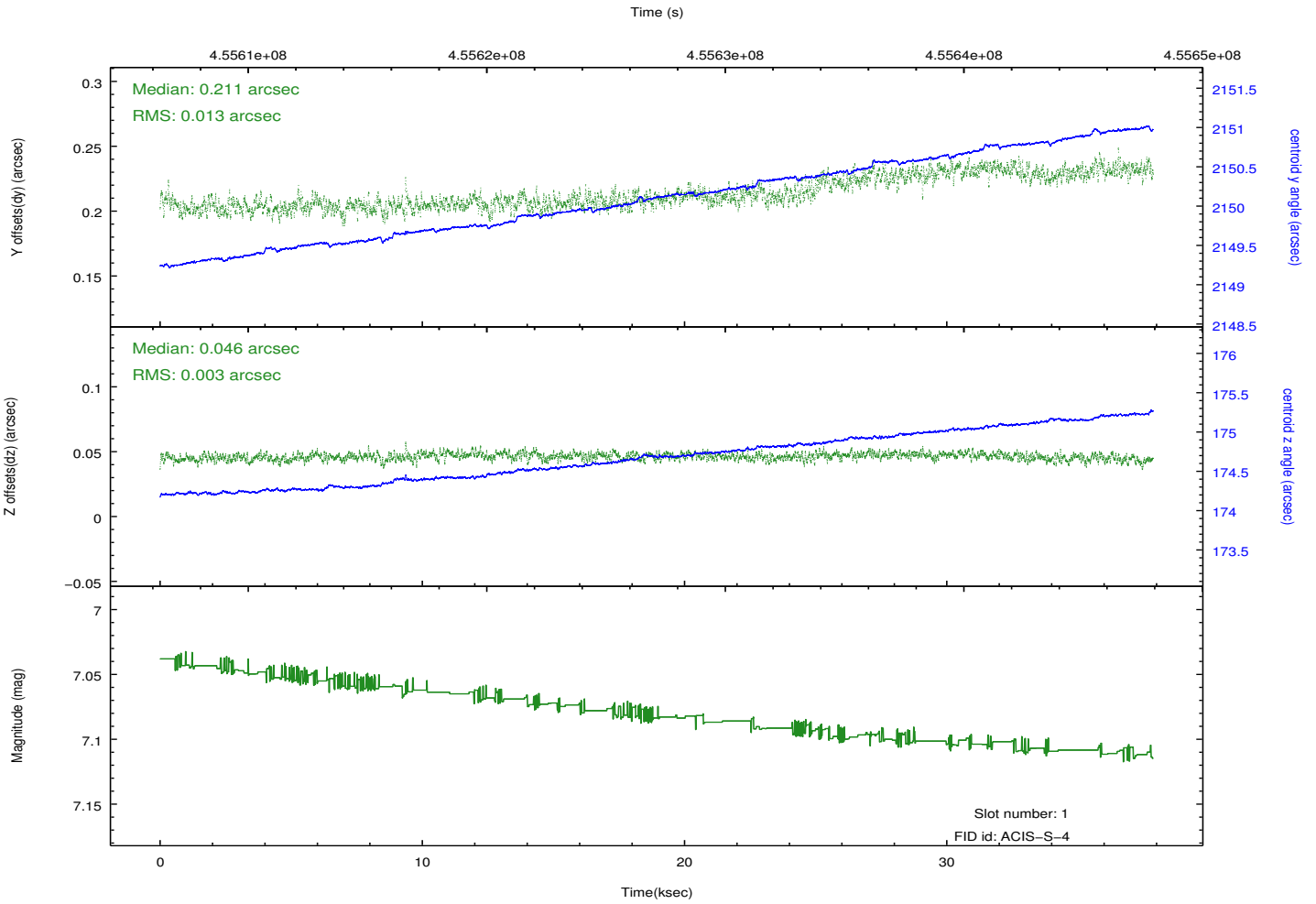
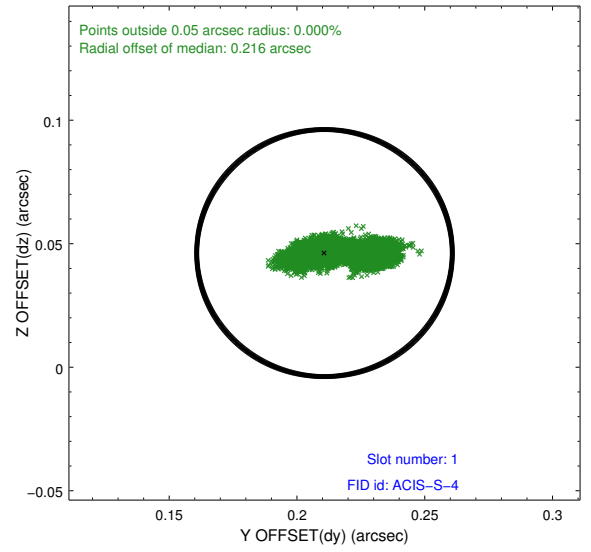
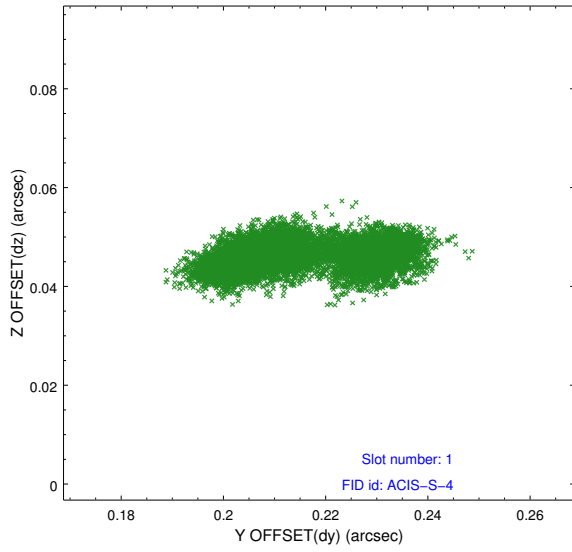


2.5 FID Slots

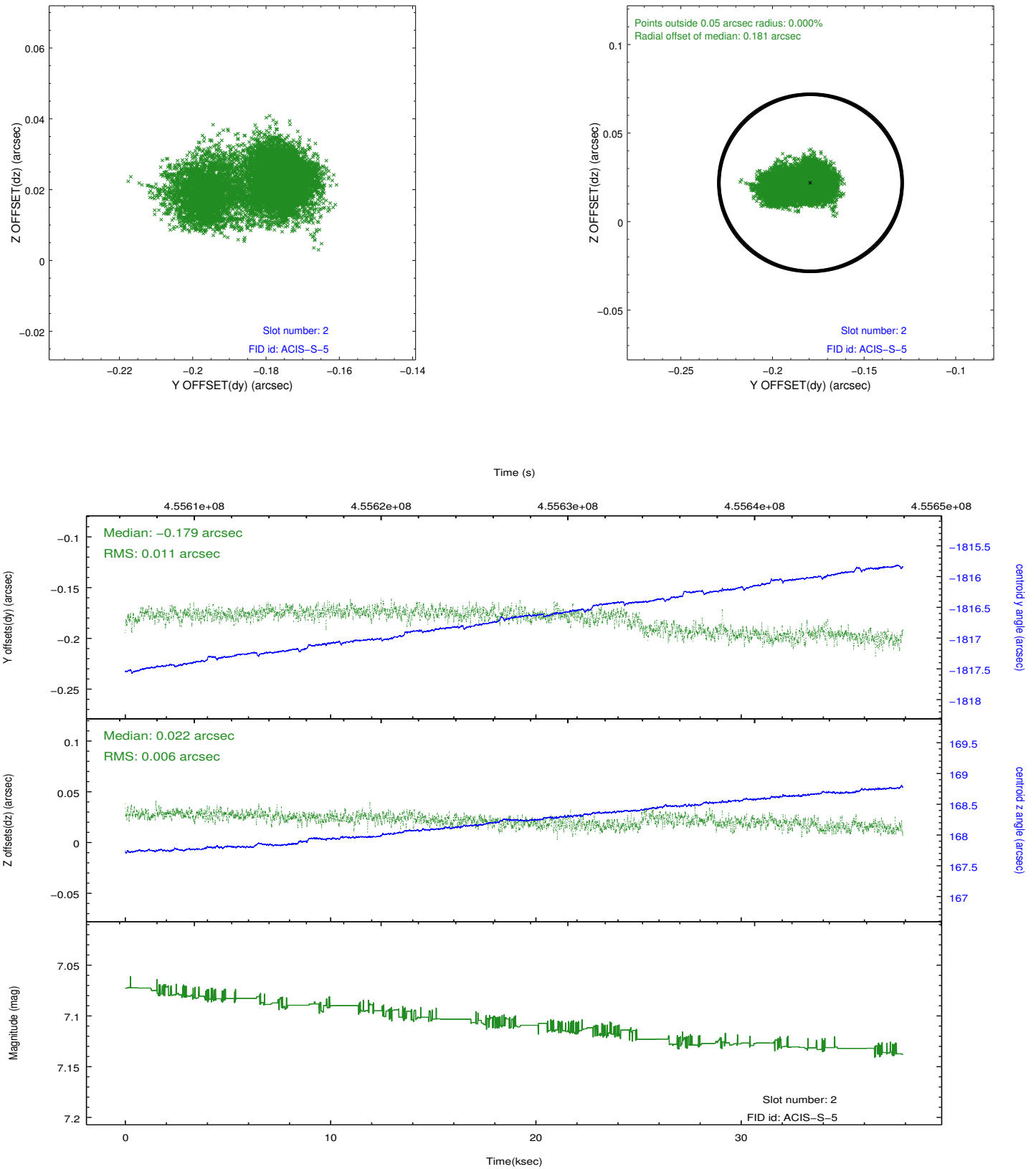
2.5.1 Slot 0



2.5.2 Slot 1



2.5.3 Slot 2



A Summary

A.1 Status

V&V Scientist	Jen Lauer
V&V Date (YYYY-MM-DD)	2012.06.11
V&V Edition	1
V&V Disposition and Status	OK
V&V Charge Time	37.063600285053

A.2 Comments