

V&V Reference Report

L2 ASCDS Version : 10

Observation 14584 - L2 Version 2
Chandra X-Ray Center

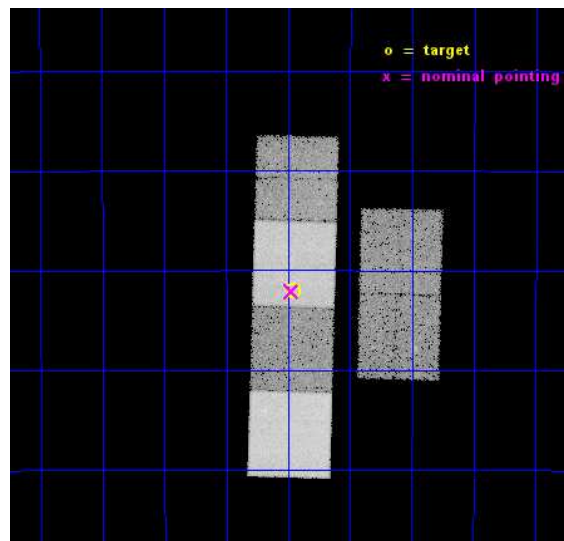
L2 Processing Date : Dec 6 2014

Contents

1	Front	2
2	OBI	3
2.1	OBI	3
2.1.1	Images	3
2.1.2	Bias	3
2.1.3	Parameters	4
2.1.4	Events	4
2.2	Compared Parameters	5
2.3	Aspect	6
2.4	Star Slots	9
2.4.1	Slot 3	9
2.4.2	Slot 4	10
2.4.3	Slot 5	11
2.4.4	Slot 6	12
2.4.5	Slot 7	13
2.5	FID Slots	14
2.5.1	Slot 0	14
2.5.2	Slot 1	15
2.5.3	Slot 2	16
A	Summary	17
A.1	Status	17
A.2	Comments	17

1 Front

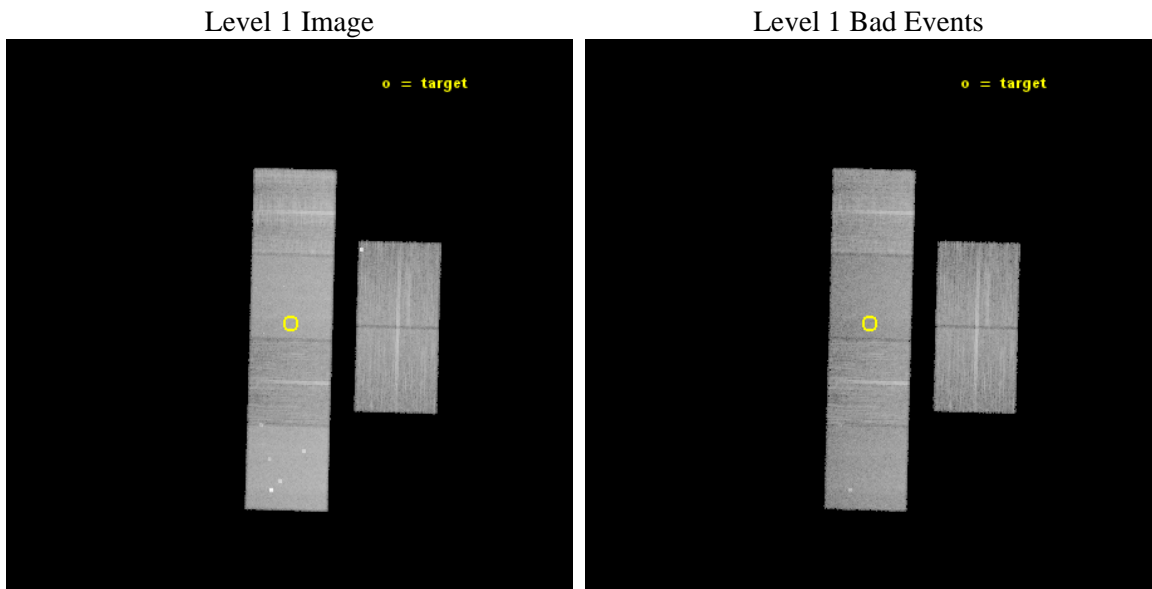
seq_num	200885	Sequence number
obs_id	14584	Observation id
title	COMPACT AND DIFFUSE X-RAY SOURCES IN THE YOUNGEST PLANETARY NEBULAE	
observer	Dr. Joel Kastner	Principal investigator
object	ESO 455-33	Source name
dtycycle	0	
cycle	P	events from which exps? Prim/Second/Both
ra_targ	266.490417	Observer's specified target RA [deg]
dec_targ	-30.200167	Observer's specified target Dec [deg]
ra_nom	266.49342809895	Nominal RA [deg]
dec_nom	-30.201746732928	Nominal Dec [deg]
roll_nom	271.56085791372	Nominal Roll [deg]
revision	2	Processing version of data
ontime	27054.59808594	Sum of GTIs [s]
livetime	26712.016474653	Livetime [s]
ontime2	27054.639125943	Sum of GTIs [s]
ontime3	27054.47496593	Sum of GTIs [s]
ontime5	27054.557045937	Sum of GTIs [s]
ontime6	27054.516005933	Sum of GTIs [s]
ontime7	27054.59808594	Sum of GTIs [s]
ontime8	27044.710915208	Sum of GTIs [s]
l2events	240675	Number of level 2 events



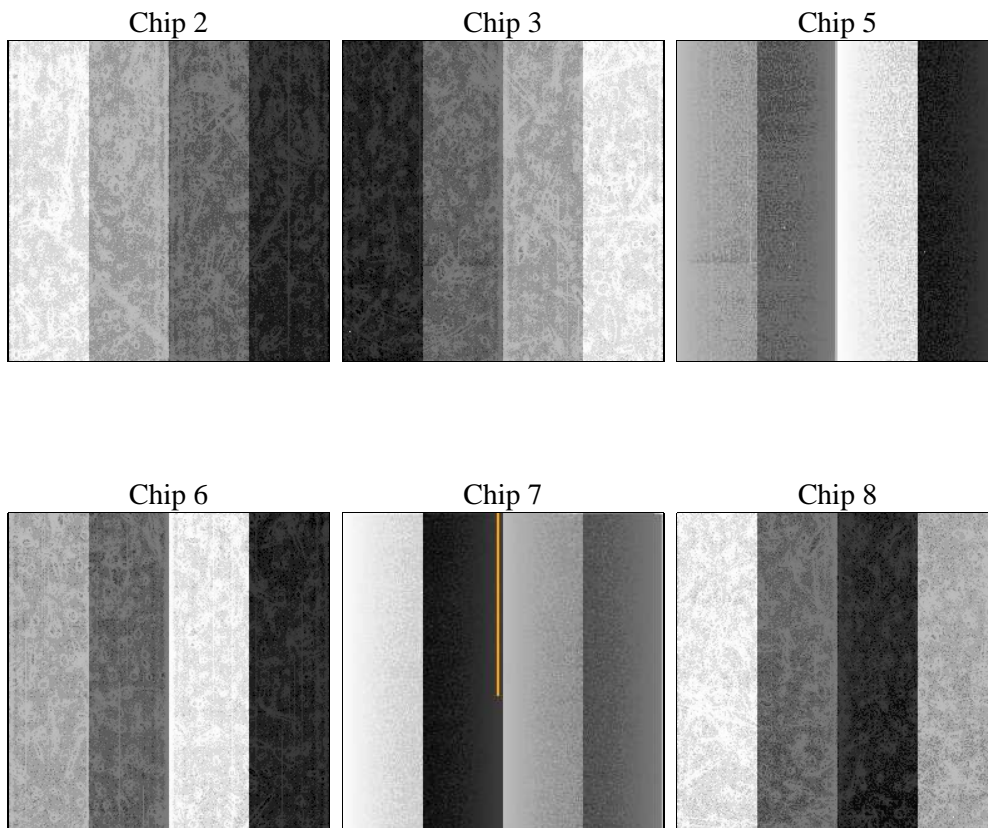
2 OBI

2.1 OBI

2.1.1 Images



2.1.2 Bias



2.1.3 Parameters

obi_num	0	Obi number	sched_exp_time	27300.000000	[s] Scheduled observation exposure time
ascdsver	10.3.1	Processing system revision	ontime	27054.59808594	Sum of GTIs [s]
caldsver	4.6.4	 	ontime2	27054.639125943	Sum of GTIs [s]
date	2014-12-06T07:50:49	Date and time of file creation	ontime3	27054.47496593	Sum of GTIs [s]
revision	2	Processing version of data	ontime5	27054.557045937	Sum of GTIs [s]
			ontime6	27054.516005933	Sum of GTIs [s]
			ontime7	27054.59808594	Sum of GTIs [s]
			ontime8	27044.710915208	Sum of GTIs [s]
			l1events	965405	Number of level 1 events

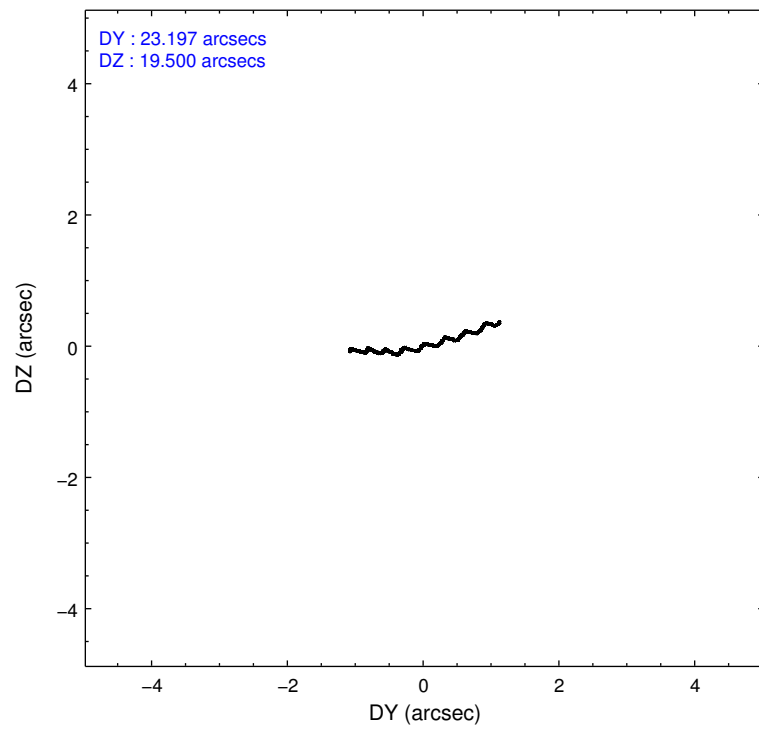
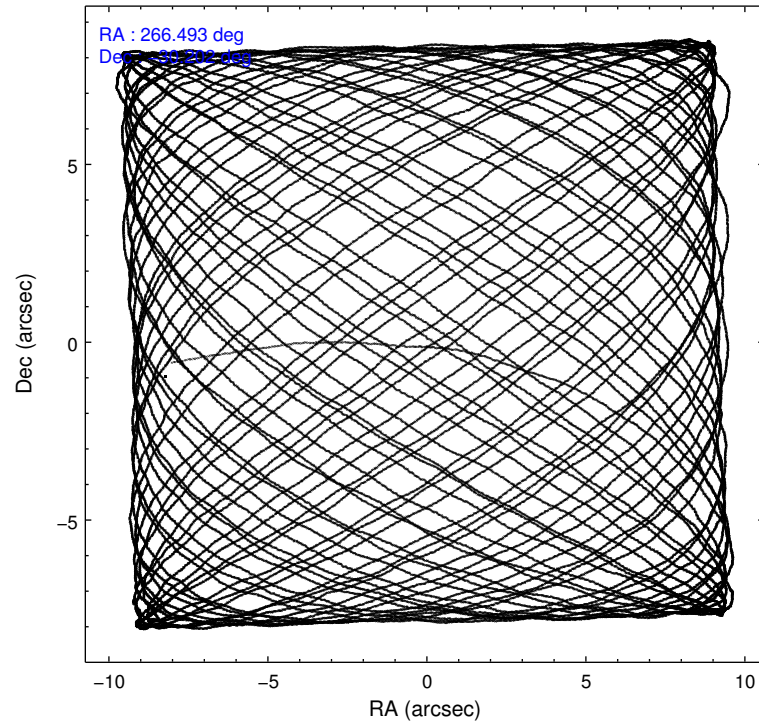
2.1.4 Events

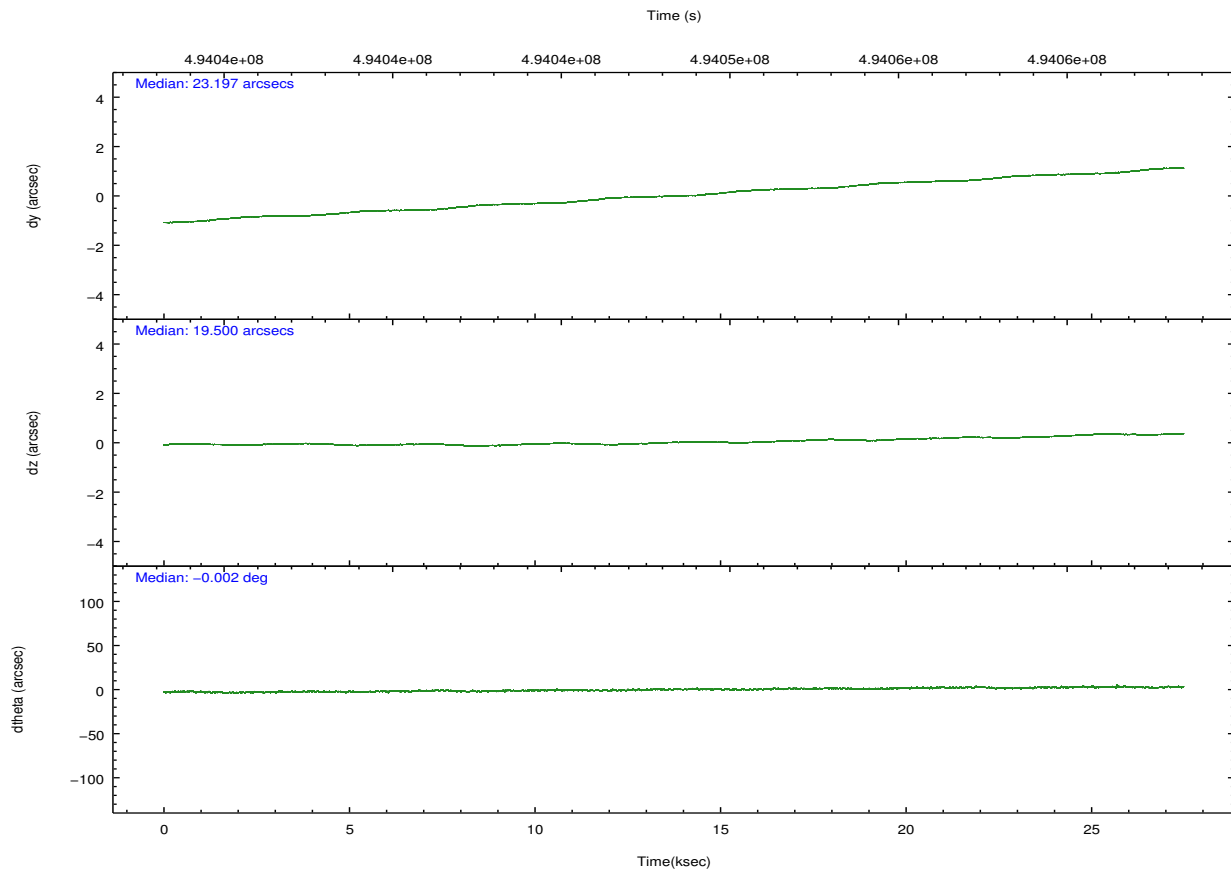
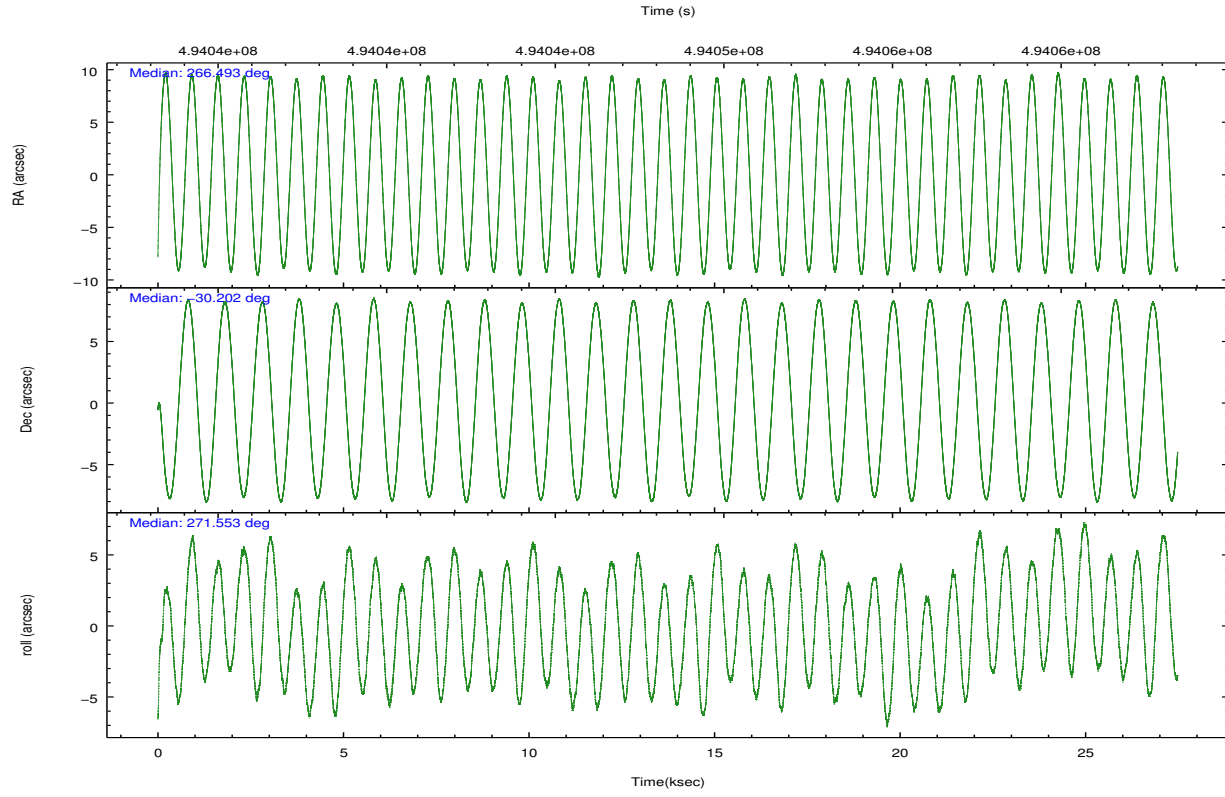
	ccd 2	ccd 3	ccd 5	ccd 6	ccd 7	ccd 8		ccd 2	ccd 3	ccd 5	ccd 6	ccd 7	ccd 8
level 1 events	130315	126429	218669	132422	180052	177518	grade 0 events	6410	9109	12761	7070	7988	15537
rejected events	113788	107739	109536	114522	98787	128401		4%	7%	5%	5%	4%	8%
rejected %	87%	85%	50%	86%	54%	72%	grade 1 events	97	80	988	65	200	128
								0%	0%	0%	0%	0%	0%
							grade 2 events	3880	3304	33294	3752	16819	11144
								2%	2%	15%	2%	9%	6%
							grade 3 events	1567	1578	3755	1642	7116	4893
								1%	1%	1%	1%	3%	2%
							grade 4 events	1549	1604	3628	1631	6949	4615
								1%	1%	1%	1%	3%	2%
							grade 5 events	5658	6575	16042	6626	18288	9838
								4%	5%	7%	5%	10%	5%
							grade 6 events	3122	3096	55715	3807	42403	12931
								2%	2%	25%	2%	23%	7%
							grade 7 events	108032	101083	92486	107829	80289	118432
								82%	79%	42%	81%	44%	66%

2.2 Compared Parameters

Parameter	Planned	Actual	Parameter	Planned	Actual
Instrument	ACIS	ACIS	Obspar format version number	7	7
Detector	ACIS-235678	ACIS-235678	Obspar file type	PREDICTED	ACTUAL
Grating	NONE	NONE	Obspar update status	NONE	UPDATED
Data mode	VFAINT	VFAINT	CCD I0 on	N	N
Observation mode	POINTING	POINTING	CCD I1 on	N	N
[deg] Pointing RA	266.476501	266.4934280989488	CCD I2 on	O3	Y
[deg] Pointing Dec	-30.178616	-30.20174673292767	CCD I3 on	O2	Y
[deg] Pointing Roll	271.395721	271.5608579137162	CCD S0 on	N	N
[mm] SIM focus pos	-0.684267	-0.6828225247311905	CCD S1 on	O1	Y
[mm] SIM defocus	0	0.001444936568705701	CCD S2 on	Y	Y
[mm] SIM translation stage pos	-190.132523	-190.1400660498719	CCD S3 on	Y	Y
[mm] SIM translation stage offset	0	0.00754346686406393	CCD S4 on	Y	Y
[s] Observation start time (MET)	494034773.184000	494033711.03546	CCD S5 on	N	N
Observation start date	2013-08-27T23:51:46	2013-08-27T23:35:11	Number of optional ACIS chips dropped	0	0
[s] Observation end time (MET)	494062073.184000	494063063.96206	On-chip summing requested	N	N
Observation end date	2013-08-28T07:26:46	2013-08-28T07:44:23	Subarray requested	NONE	NONE
Read mode	TIMED	TIMED	Alternating exposures requested	N	N
			[s] Primary exposure time	0.000000	3.2

2.3 Aspect



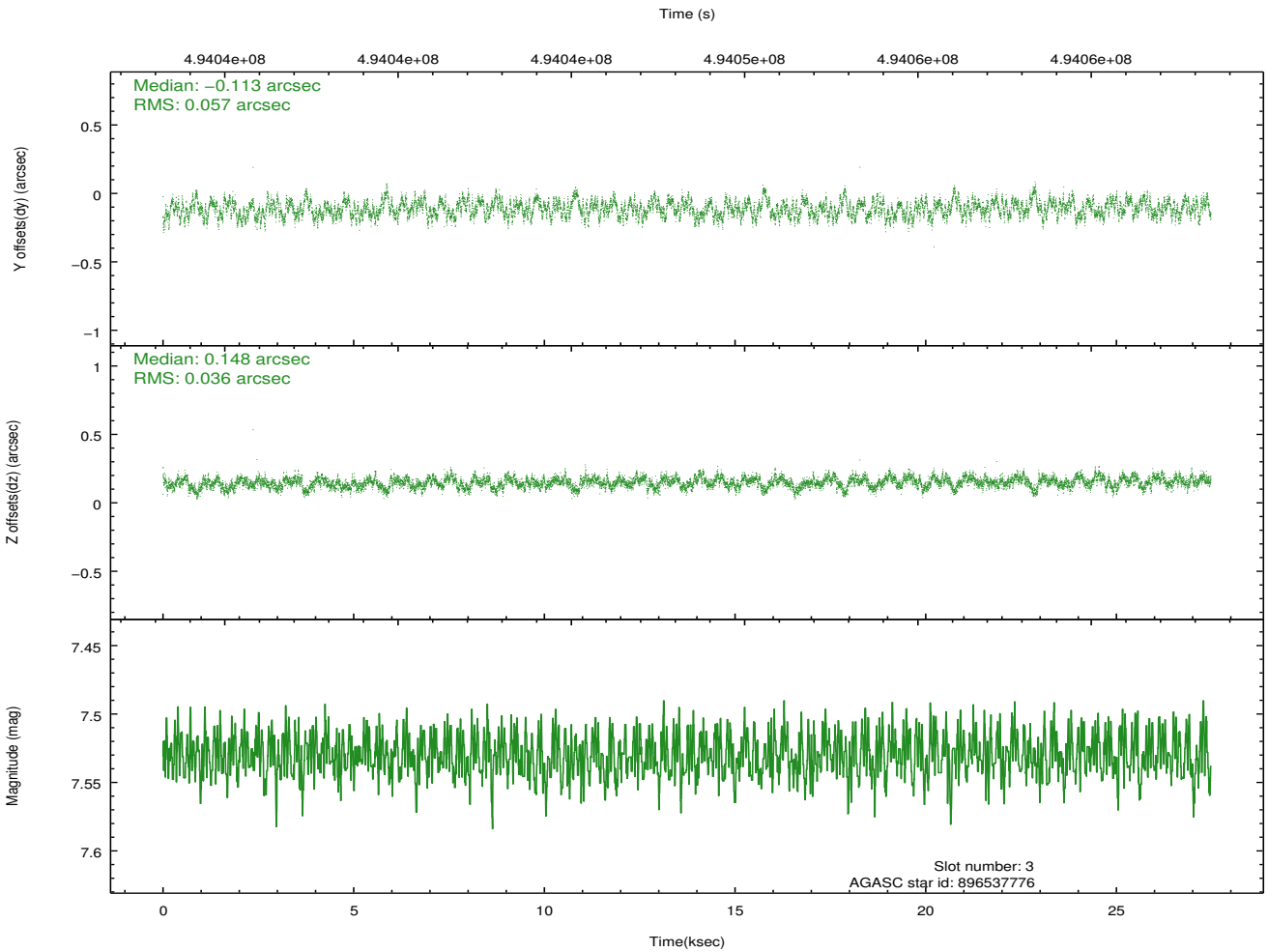
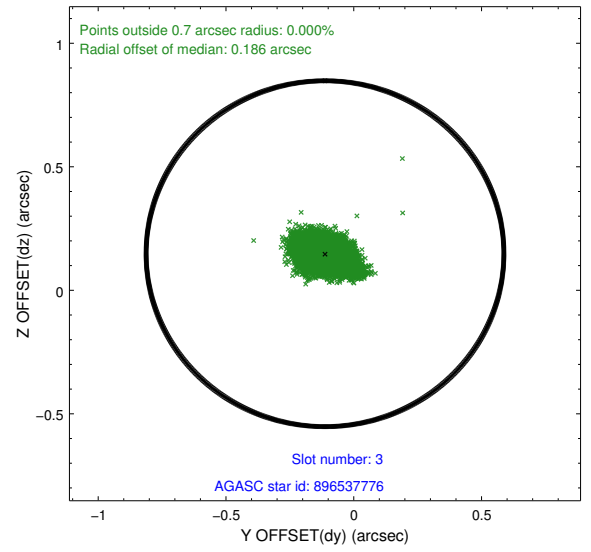
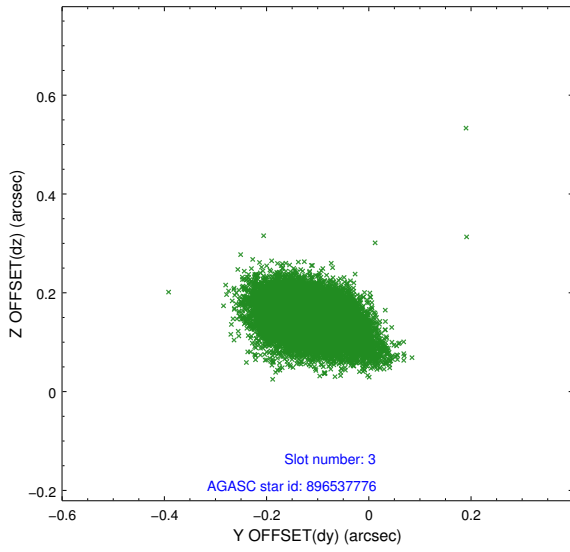


Slot Statistics

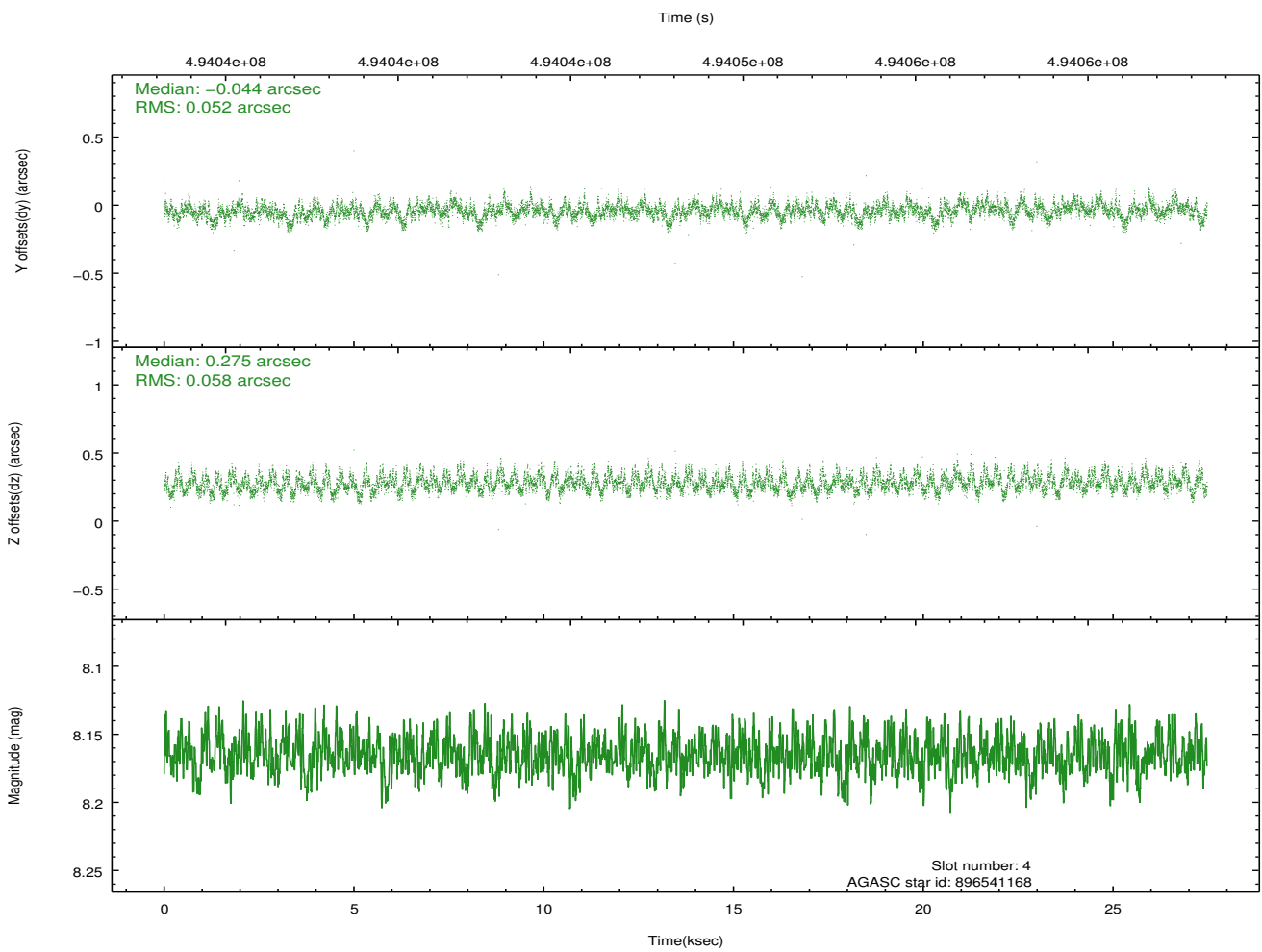
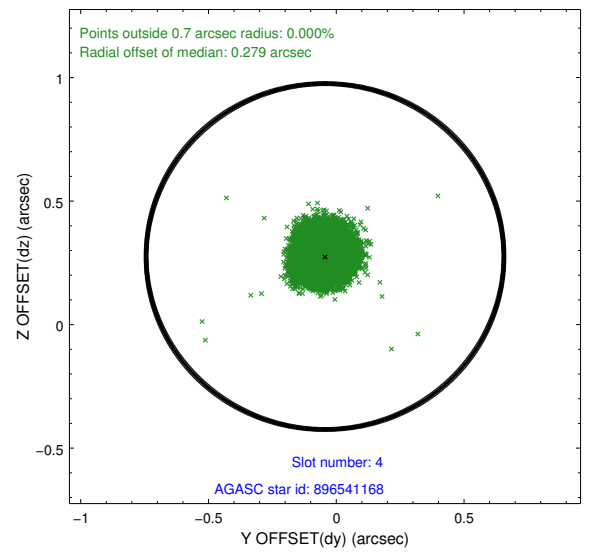
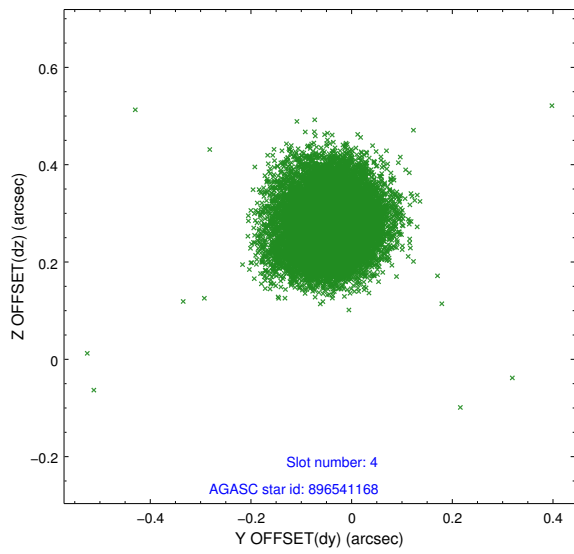
slot	status	used	id	mag	n_pts	med_dy	med_dz	dr1	dr2	ra	dec	mean_y	mean_z
0	FID		ACIS-S-1	7.03	6702	0.060	0.019	0.012	0.022	0.000000	0.000000	919.58	-1736.72
1	FID		ACIS-S-2	6.94	6703	-0.226	-0.110	0.020	0.031	0.000000	0.000000	-776.55	-1741.40
2	FID		ACIS-S-4	7.03	6703	0.141	0.094	0.030	0.042	0.000000	0.000000	2136.97	167.36
3	GUIDE	used	896537776	7.53	13405	-0.113	0.148	0.071	0.118	266.655684	-29.665673	-1831.96	605.40
4	GUIDE	used	896541168	8.17	13404	-0.044	0.275	0.084	0.132	266.319970	-29.850801	-1191.10	-459.77
5	GUIDE	used	966924920	8.10	13407	0.307	-0.093	0.083	0.137	265.875401	-30.176961	-45.91	-1870.06
6	GUIDE	used	966926496	8.10	13403	-0.084	-0.073	0.086	0.134	267.109389	-30.299474	488.33	1955.32
7	GUIDE	used	966920512	8.34	13332	-0.069	-0.267	0.083	0.134	267.231170	-30.494681	1202.18	2312.66

2.4 Star Slots

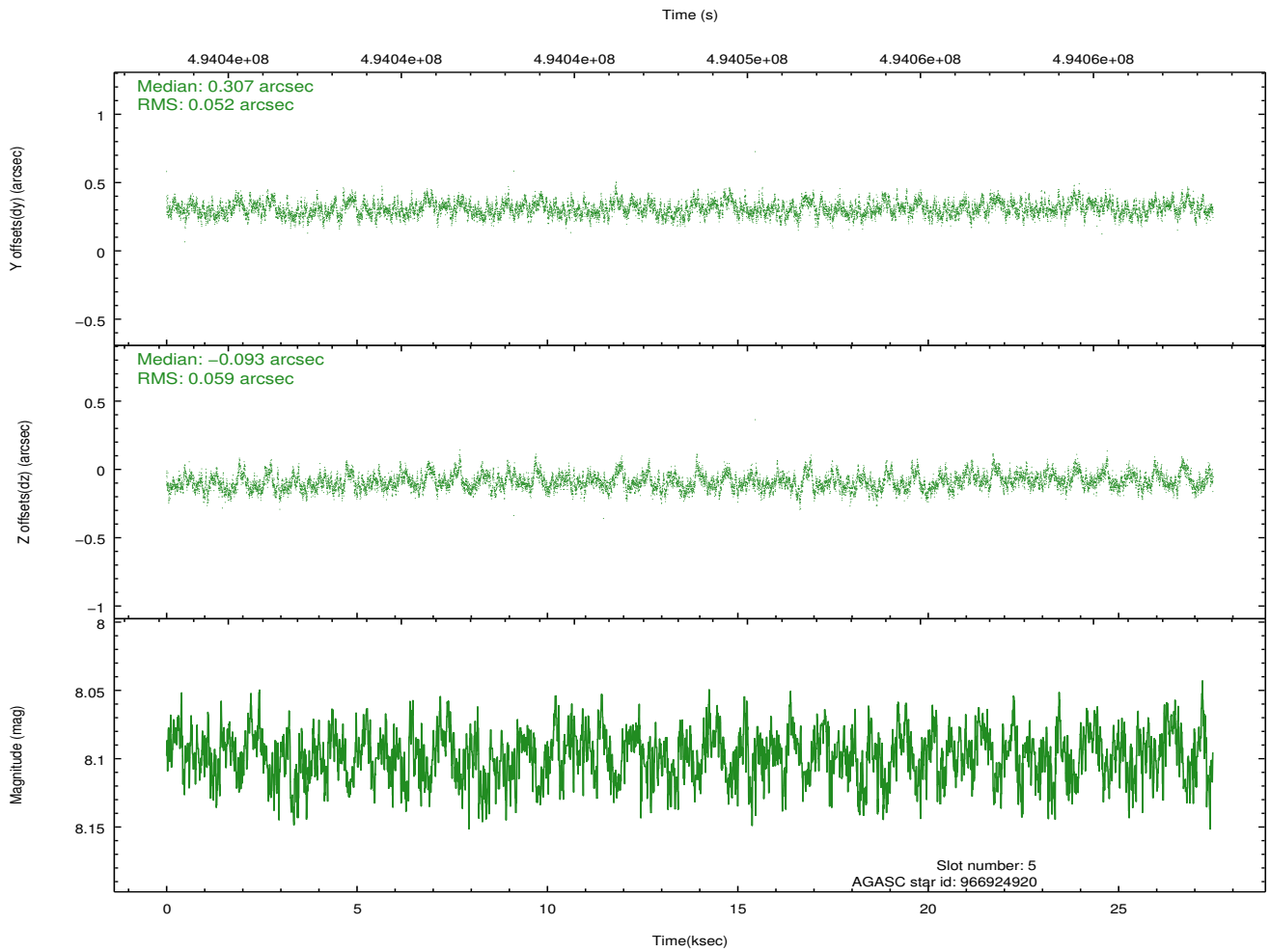
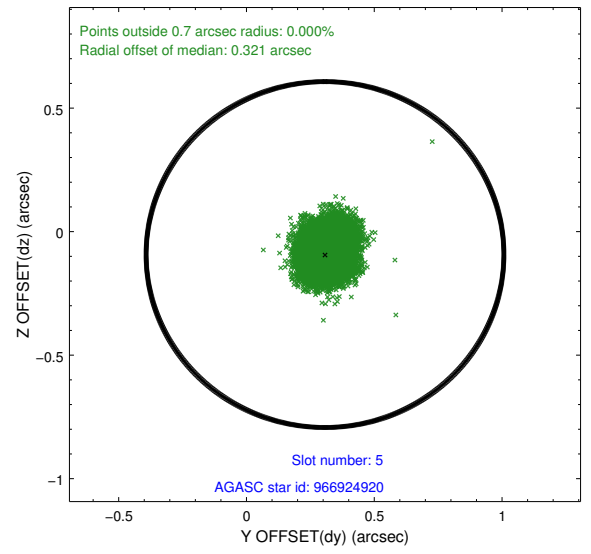
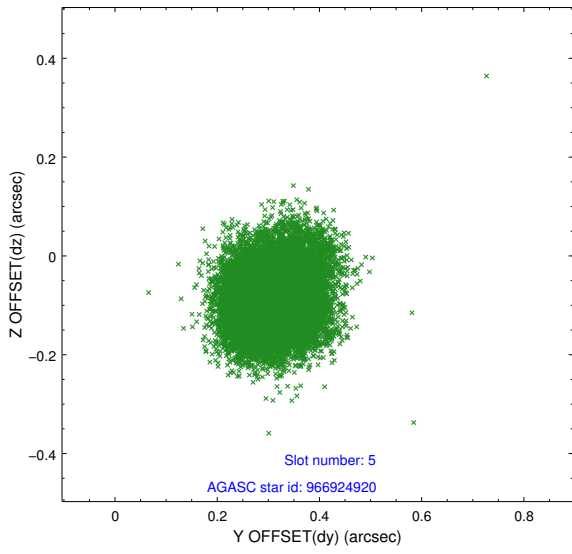
2.4.1 Slot 3



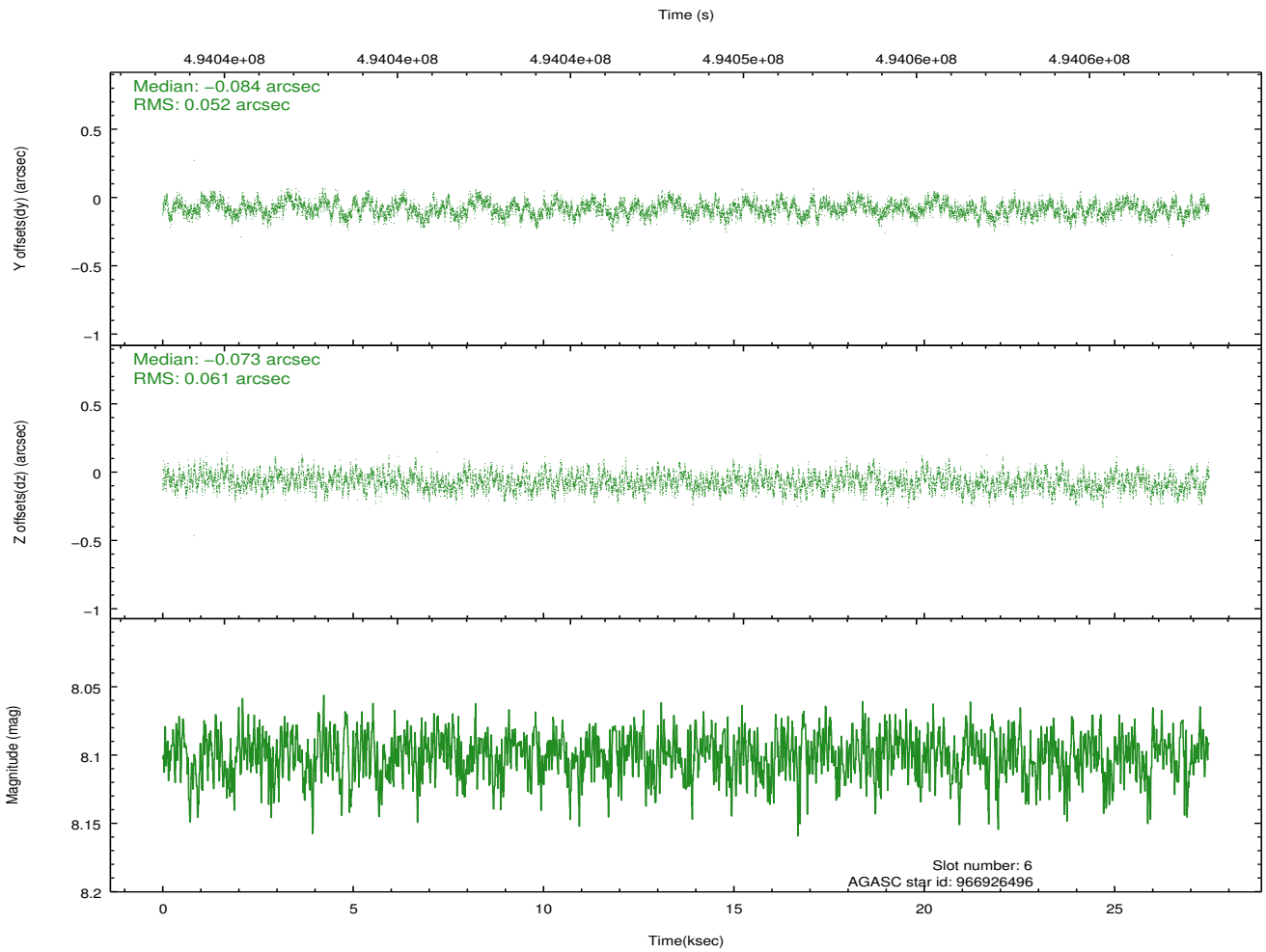
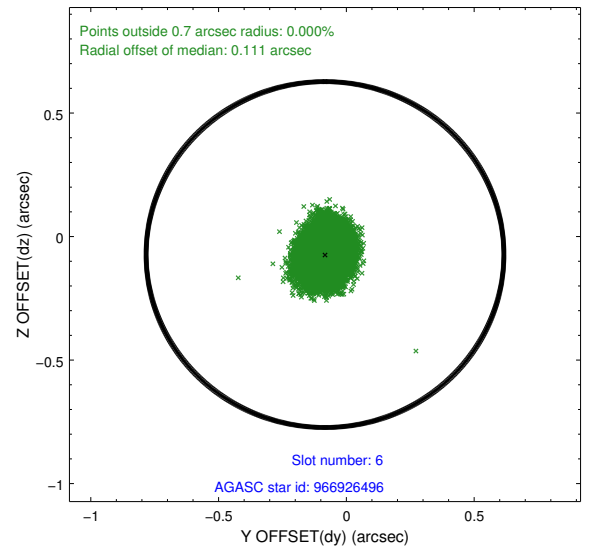
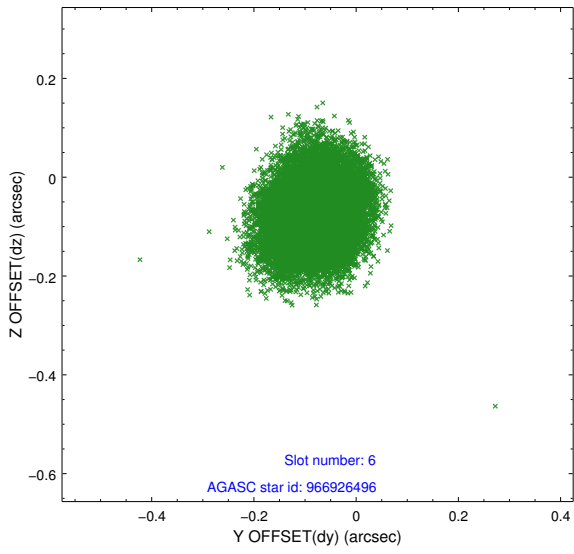
2.4.2 Slot 4



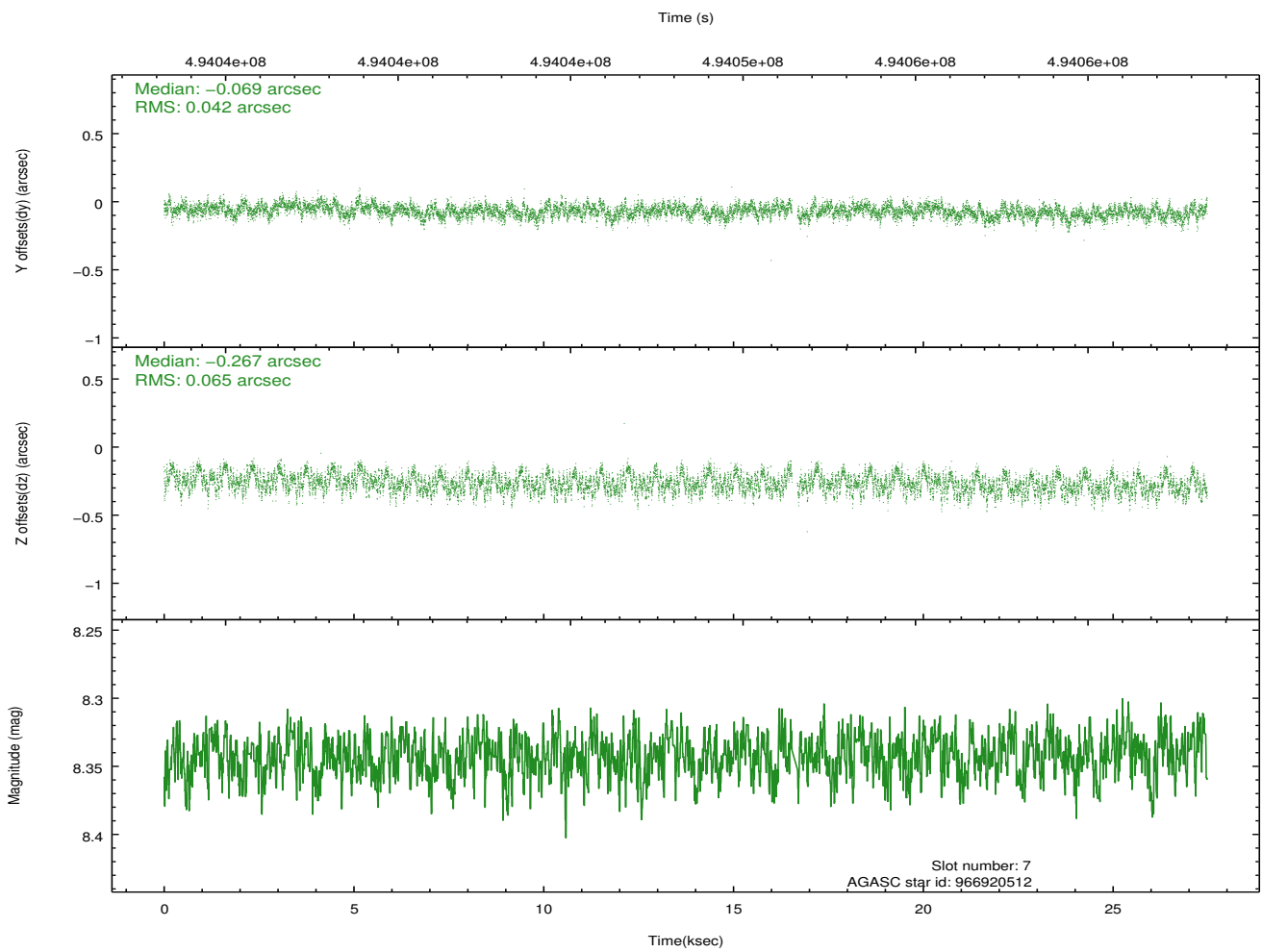
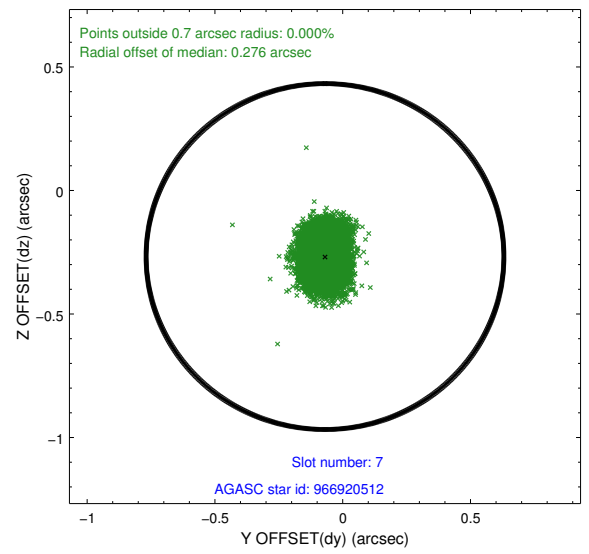
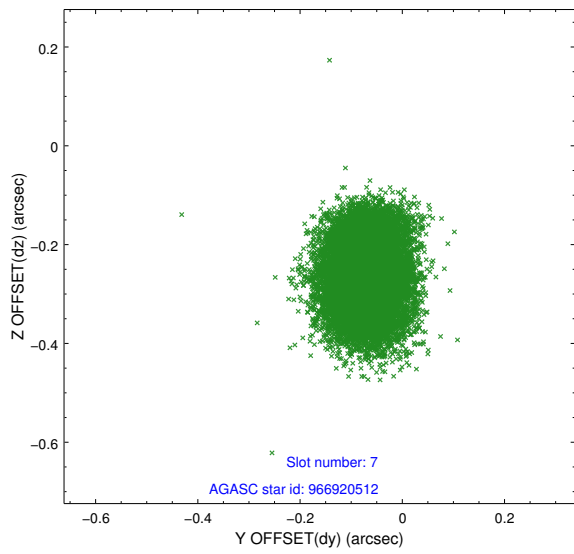
2.4.3 Slot 5



2.4.4 Slot 6

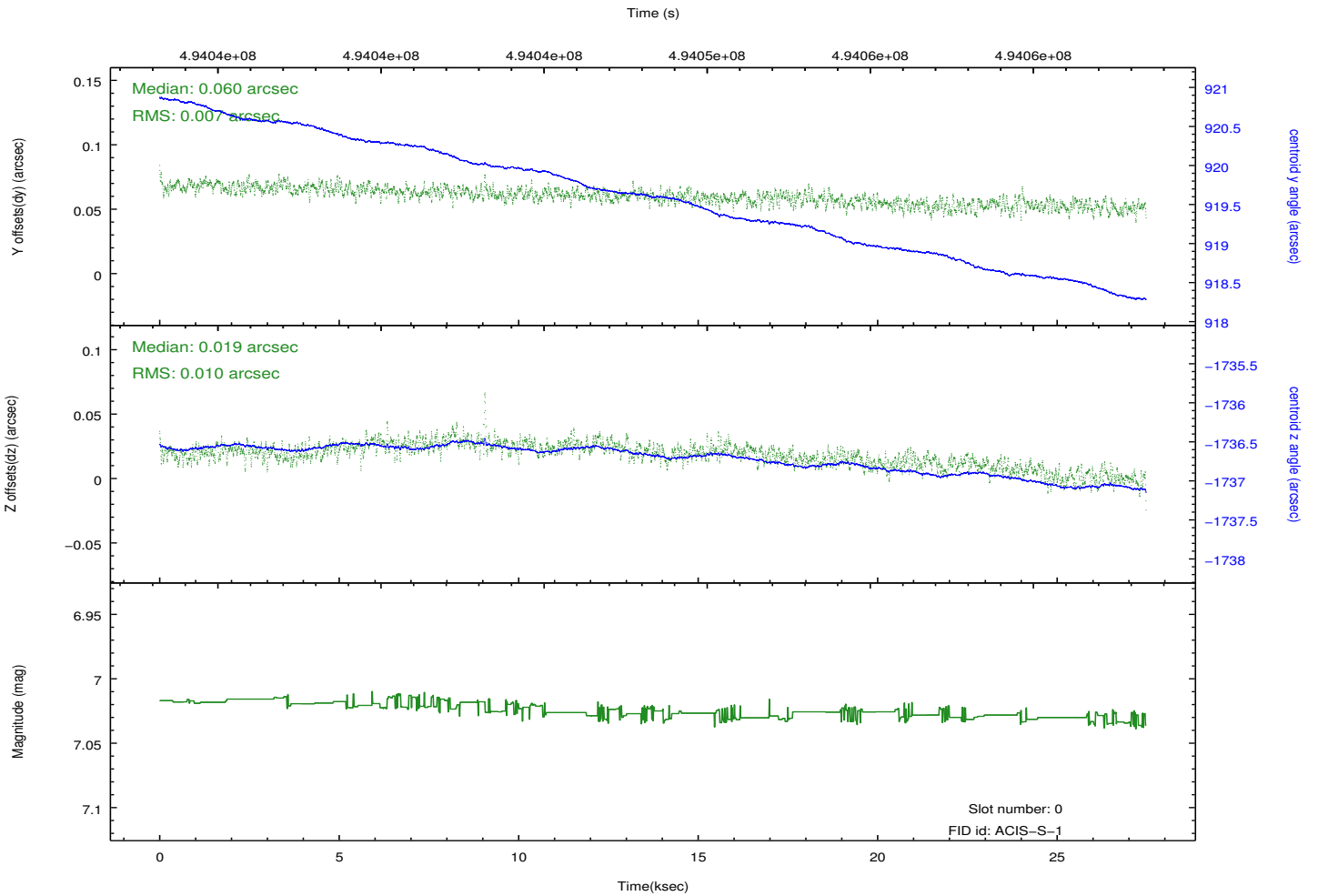
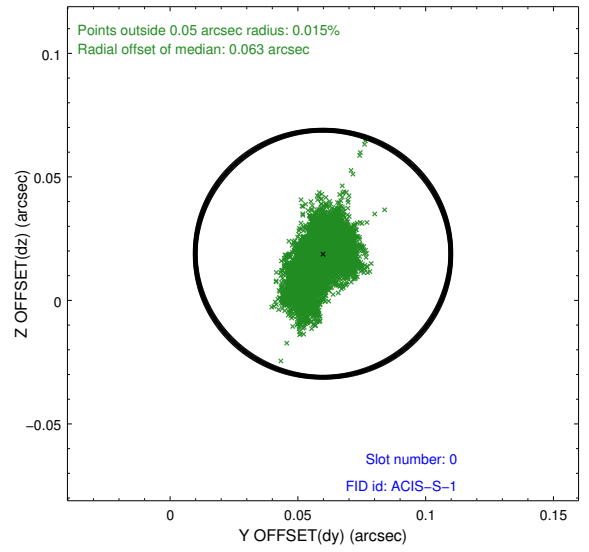
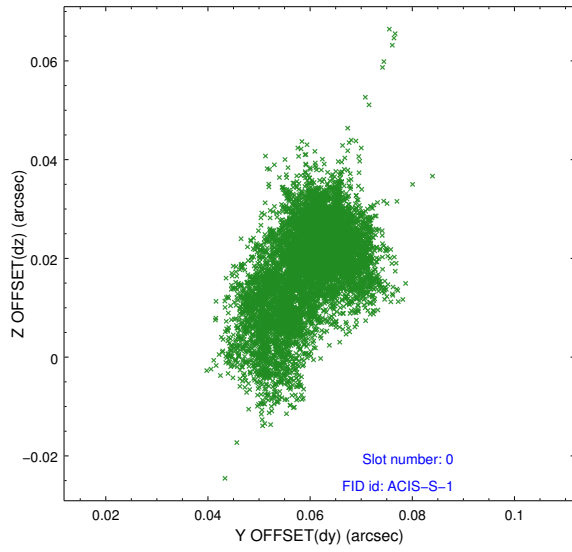


2.4.5 Slot 7

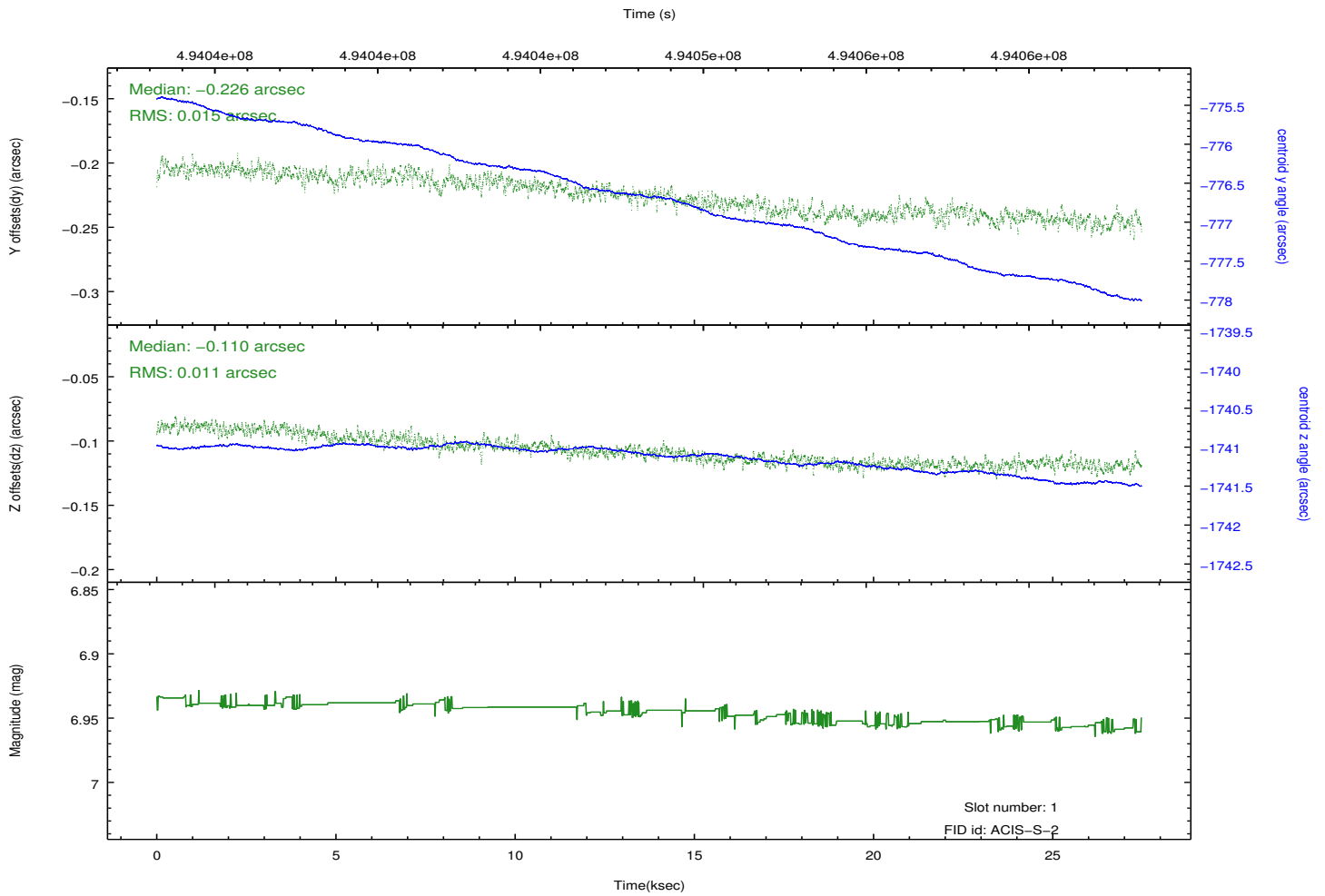
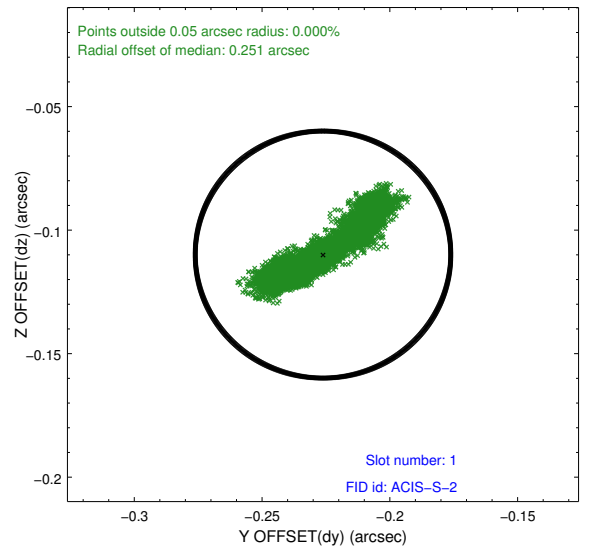
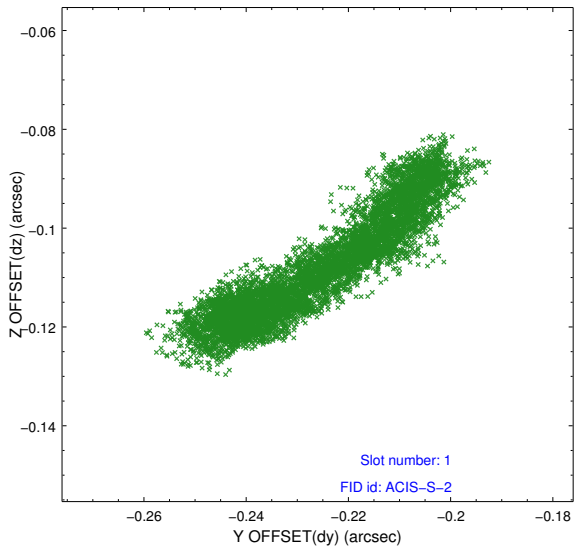


2.5 FID Slots

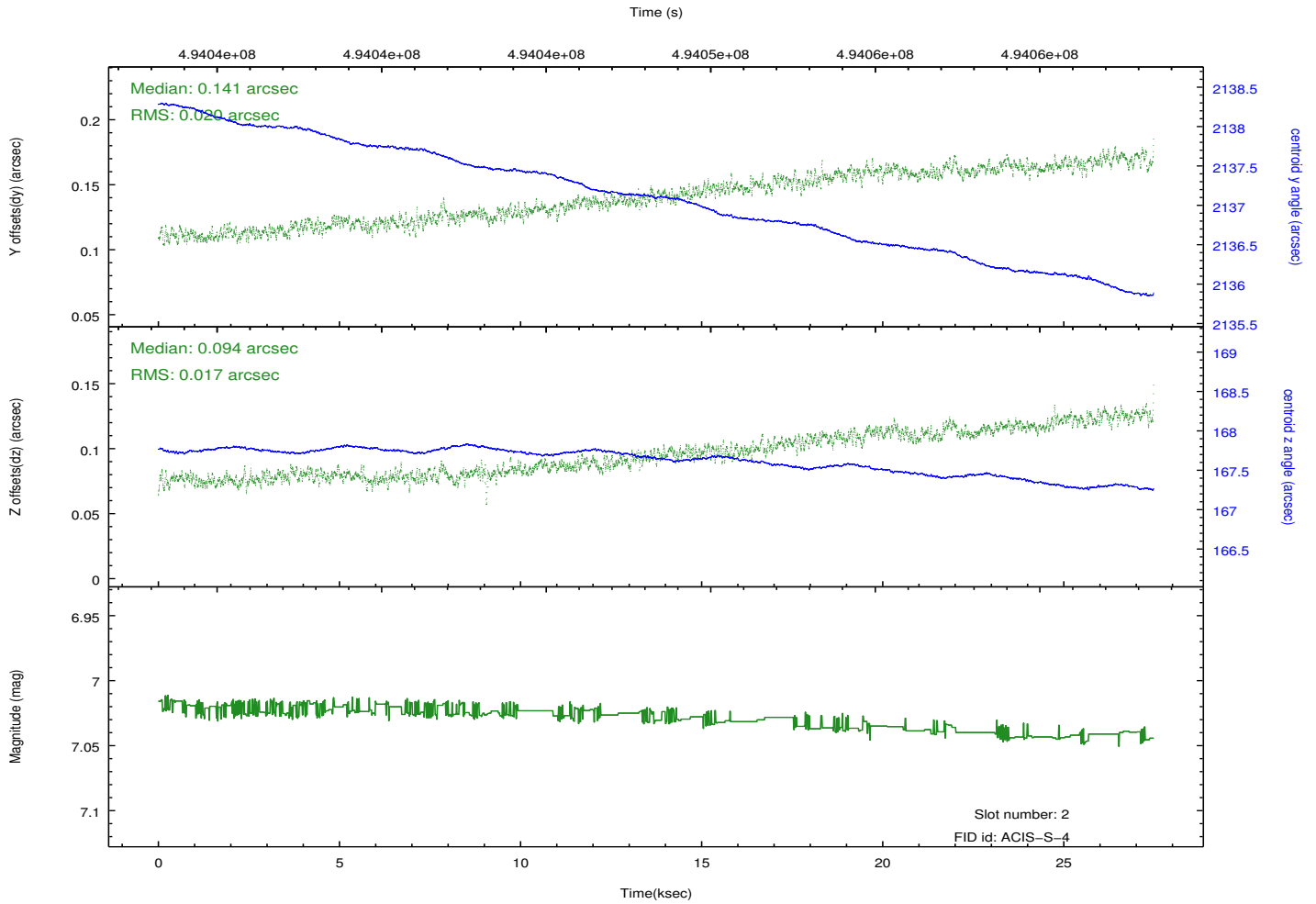
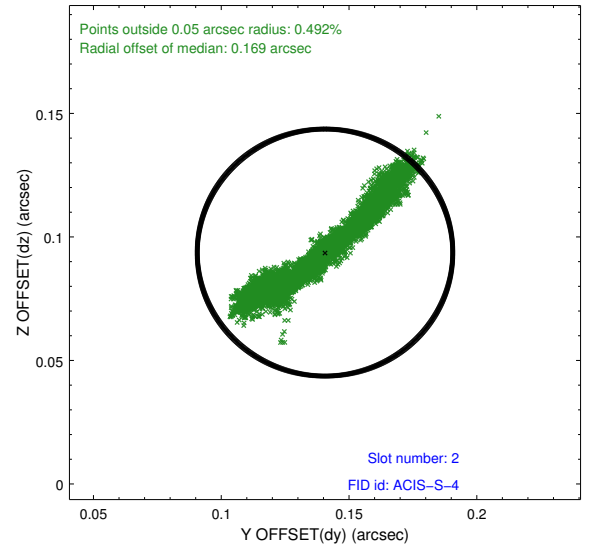
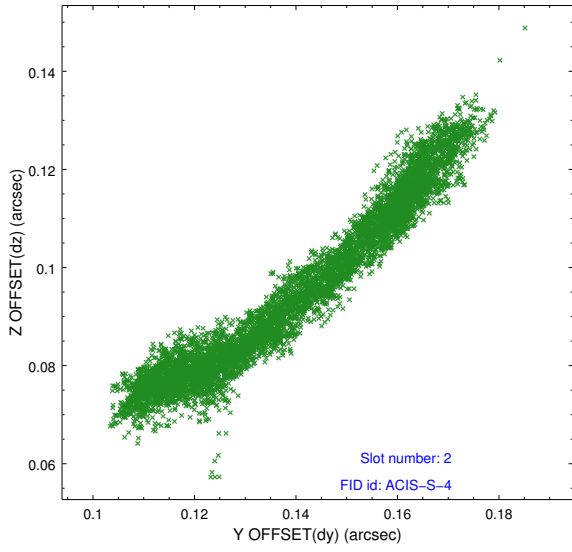
2.5.1 Slot 0



2.5.2 Slot 1



2.5.3 Slot 2



A Summary

A.1 Status

V&V Scientist	Beth Sundheim
V&V Date (YYYY-MM-DD)	2014.12.12
V&V Edition	1
V&V Disposition and Status	OK
V&V Charge Time	27.05459808594

A.2 Comments

These data have been reprocessed with new aspect alignment calibration files that correct small mean offsets (up to 0.4 arcsecs) and improve overall astrometric accuracy. The new calibration was determined using data from the time period being reprocessed and was performed using cross-correlation of X-ray sources with radio and optical counterparts.