

V&V Reference Report

L2 ASCDS Version : 8.1.1

Observation 1464 - L2 Version 4
Chandra X-Ray Center

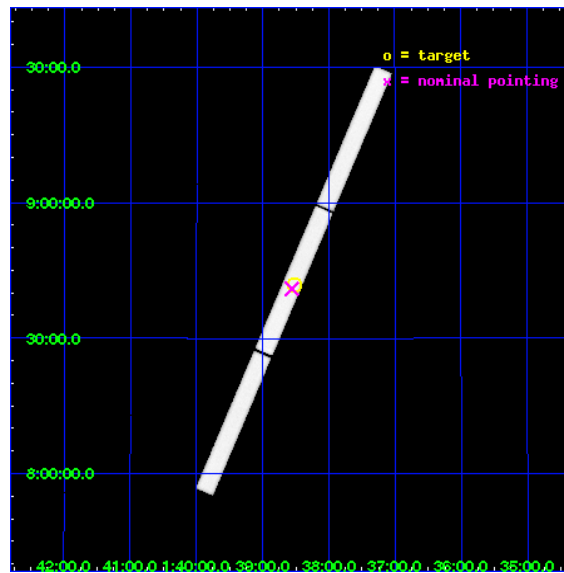
L2 Processing Date : Nov 24 2009

Contents

1	Front	2
2	OBI	3
2.1	OBI	3
2.1.1	Images	3
2.1.2	Parameters	4
2.1.3	Events	4
2.2	Compared Parameters	5
2.3	Aspect	6
2.4	Star Slots	9
2.4.1	Slot 3	9
2.4.2	Slot 4	10
2.4.3	Slot 5	11
2.4.4	Slot 6	12
2.4.5	Slot 7	13
2.5	FID Slots	14
2.5.1	Slot 0	14
2.5.2	Slot 1	15
2.5.3	Slot 2	16
3	Gratings	17
3.1	LETG Arm	17
A	Summary	19
A.1	Status	19
A.2	Comments	19

1 Front

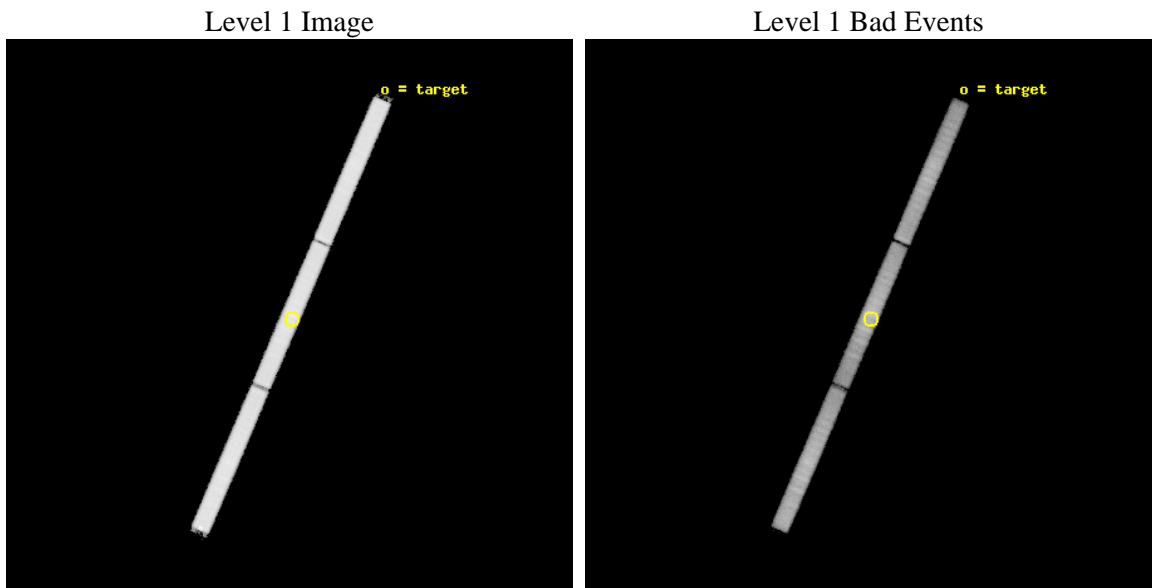
seq_num	100011	Sequence number
obs_id	1464	Observation id
title	 	Proposal title
observer	DR. J WAITE	Principal investigator
object	JUPITER	Source name
ra_targ	24.62935	Observer's specified target RA
dec_targ	8.69521	Observer's specified target Dec
ra_nom	24.639601893402	Nominal RA
dec_nom	8.6829673287463	Nominal Dec
roll_nom	293.17777520446	Nominal Roll
revision	4	Processing version of data
ontime	14782.806784198	[s]
livedtime	14683.15535824	Ontime multiplied by DTCOR
l2events	664762	Number of level 2 events



2 OBI

2.1 OBI

2.1.1 Images



2.1.2 Parameters

obi_num	0	Obi number	sched_exp_time	19100.000000	Scheduled observation exposure time
ascdsver	8.1.1	Processing system revision	ontime	14782.806784198	[s]
caldbver	4.1.4	 	ll events	1087371	Number of level 1 events
date	2009-11-24T15:25:02	Date and time of file creation			
revision	4	Processing version of data			

2.1.3 Events

Level 1 Events

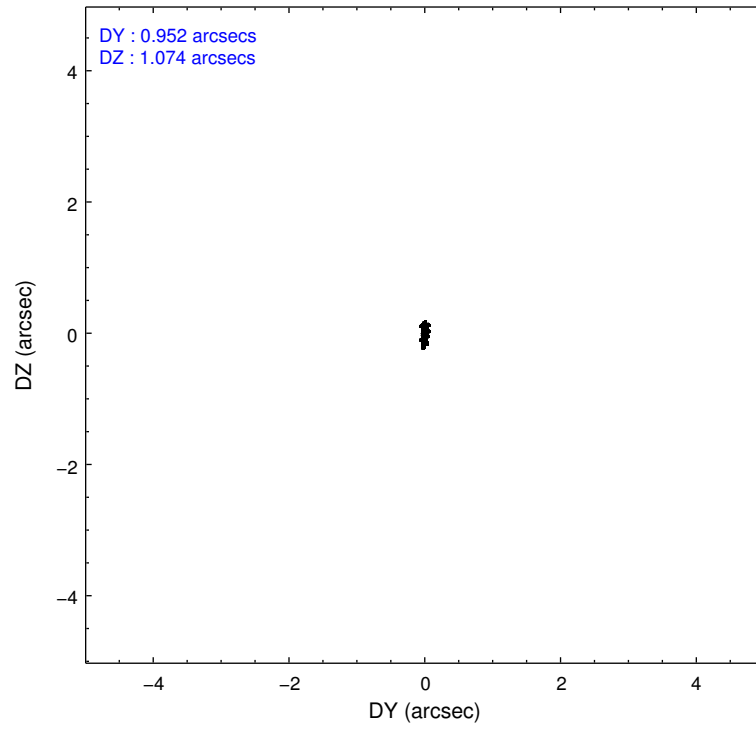
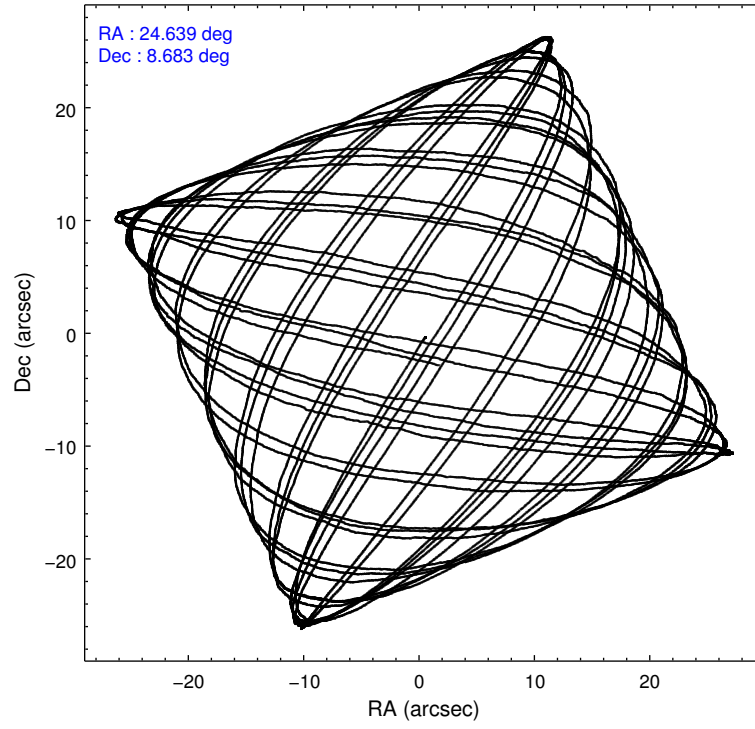
	segment 1	segment 2	segment 3
level 1 events	363660	354428	369283
rejected events	97732	103687	118559
rejected %	26%	29%	32%

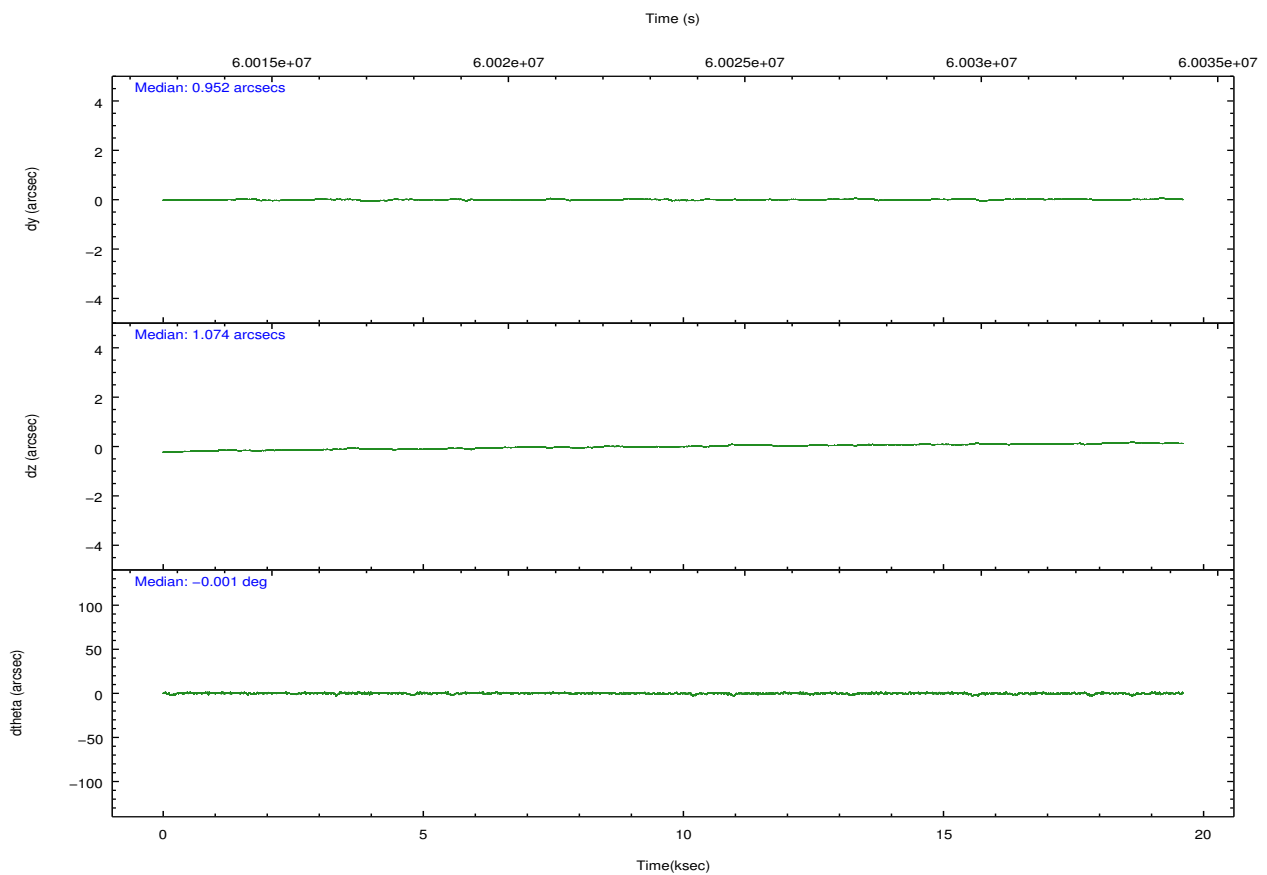
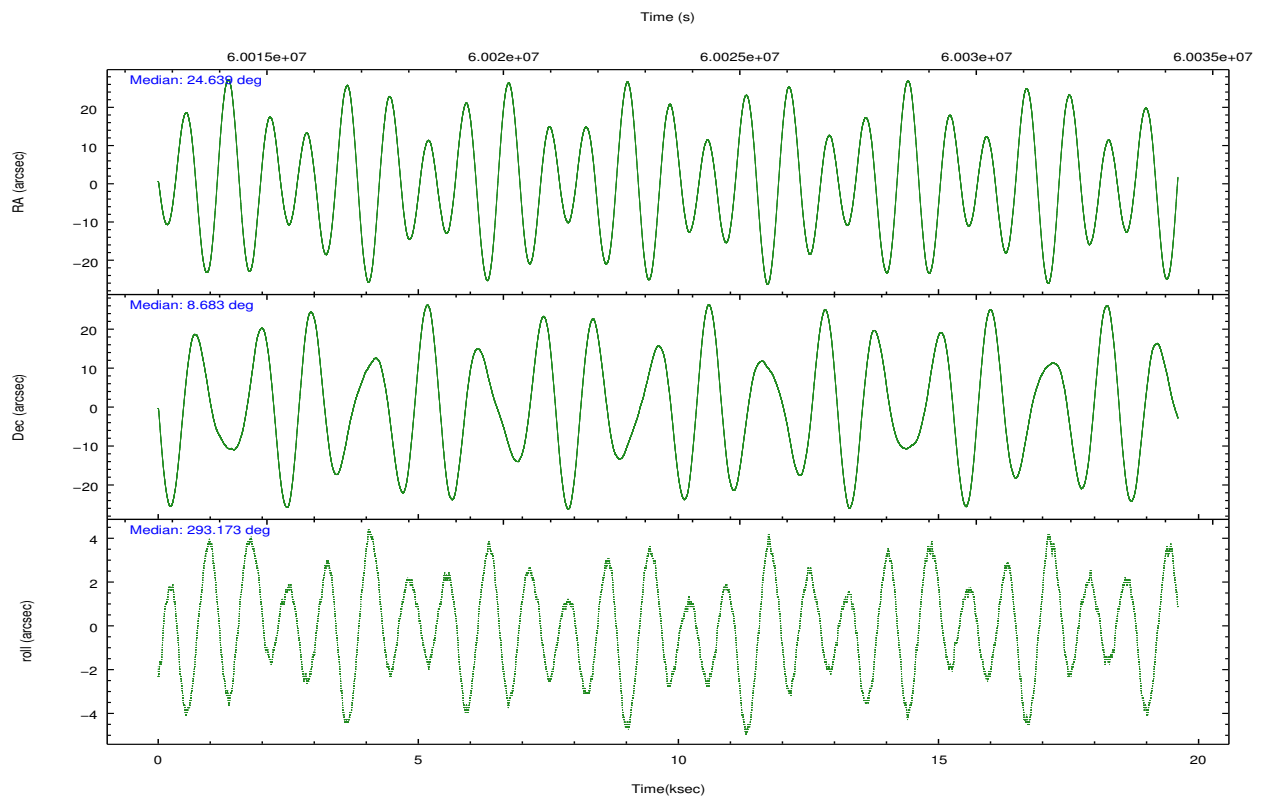
2.2 Compared Parameters

Parameter	Planned	Actual
Instrument	HRC	HRC
Detector	HRC-S	HRC-S
Grating	LETG	LETG
Data mode	OBSERVING	OBSERVING
Observation mode	POINTING	POINTING
Pointing RA	24.615666	24.63960189340162
Pointing Dec	8.699544	8.682967328746308
Pointing Roll	293.114053	293.1777752044568
Window start time	60014164.184000	60014164.184000
Window stop time	60033274.184000	60033274.184000
SIM focus pos (mm)	-1.429586	-1.428180813131781
SIM defocus (mm)	0.1037507710433287	0.1051558262725154
SIM translation stage pos (mm)	250.455976	250.466033080201
SIM translation stage offset (mm)	0	-0.01005468664627074
Observation start time	60014164.184000	60013497.737172
Observation start date	1999-11-26T14:35:00	1999-11-26T14:24:57
Observation end time	60033264.184000	60033417.587892
Observation end date	1999-11-26T19:53:20	1999-11-26T19:56:57

Parameter	Planned	Actual
Obspar format version number	6	6
Obspar file type	PREDICTED	ACTUAL
Obspar update status	NONE	UPDATED

2.3 Aspect



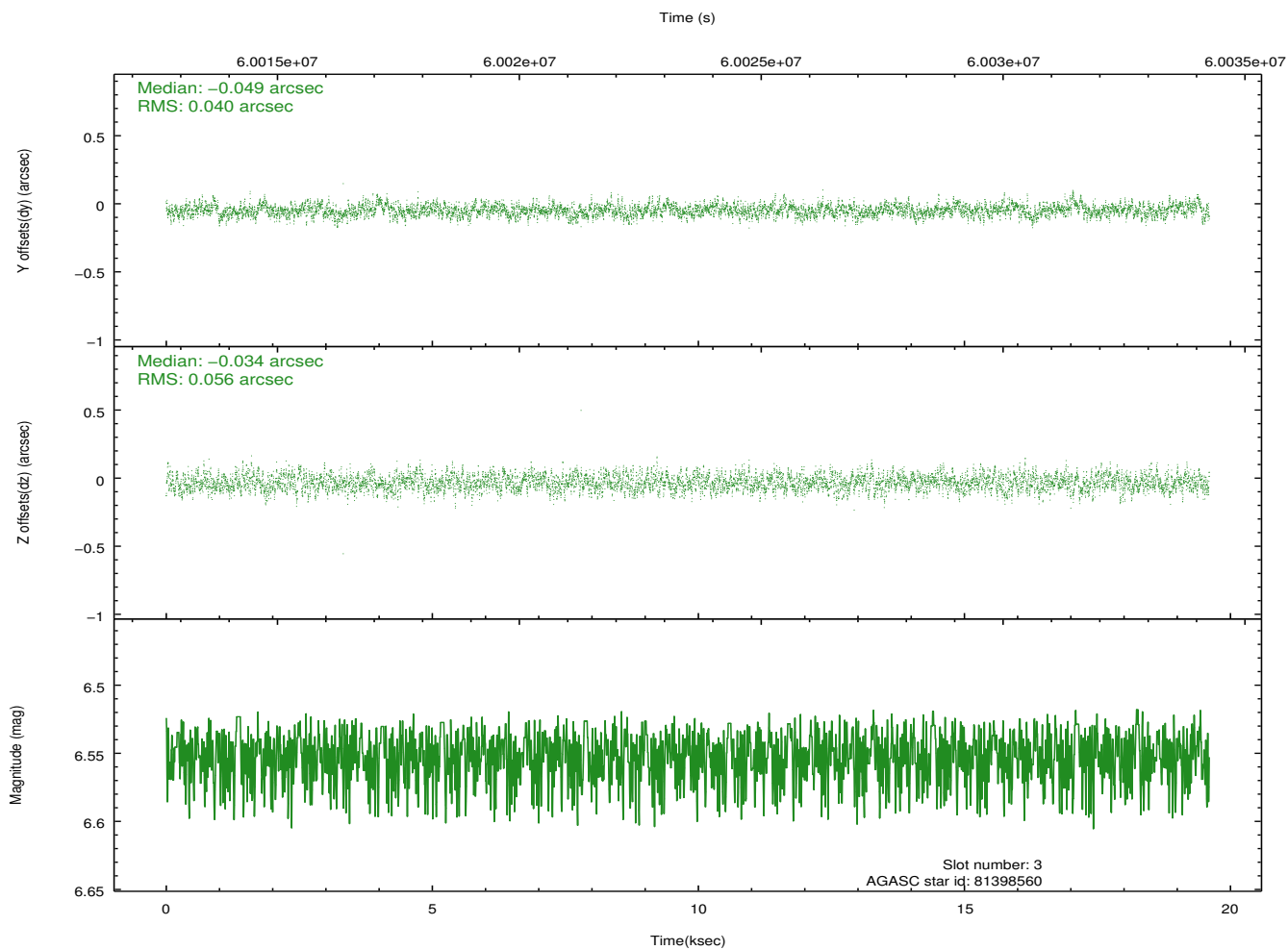
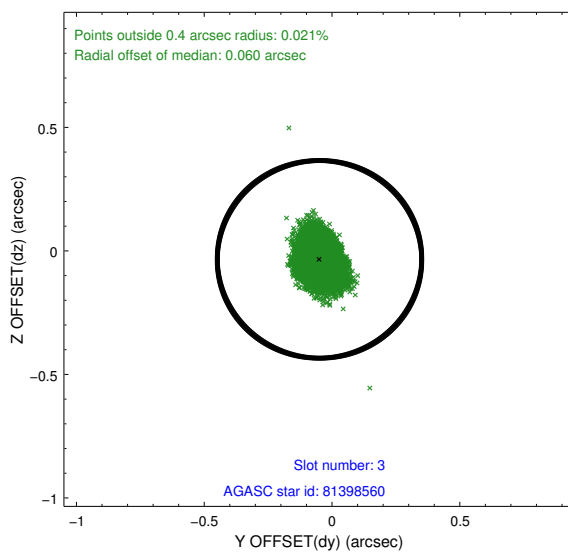
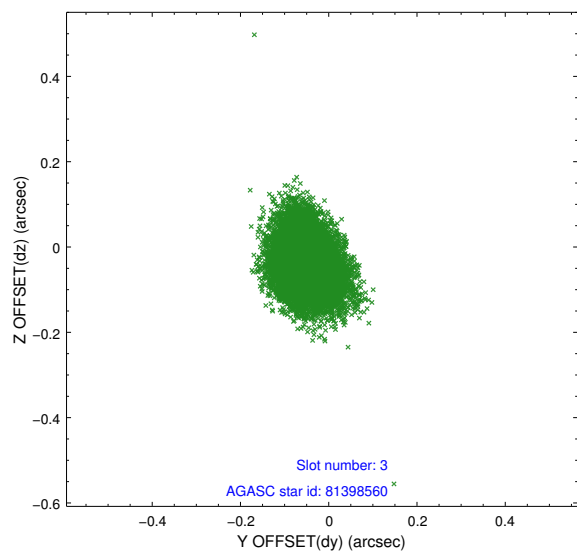


Slot Statistics

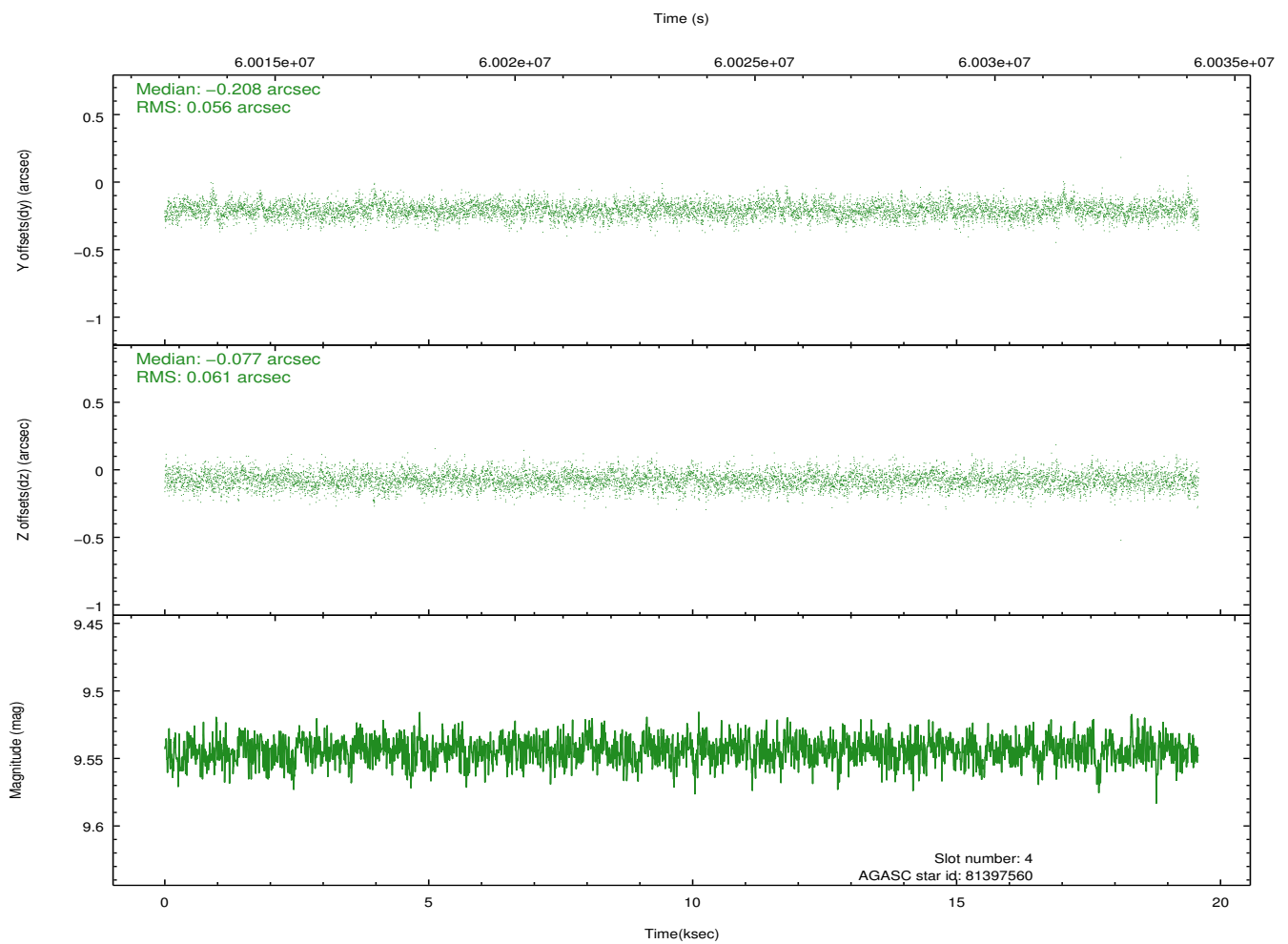
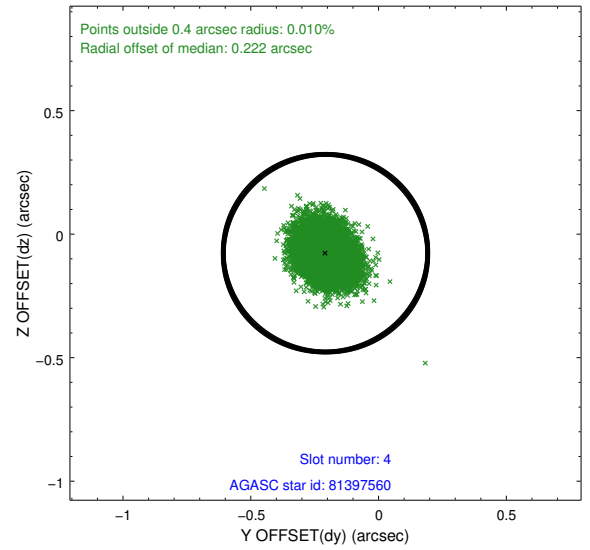
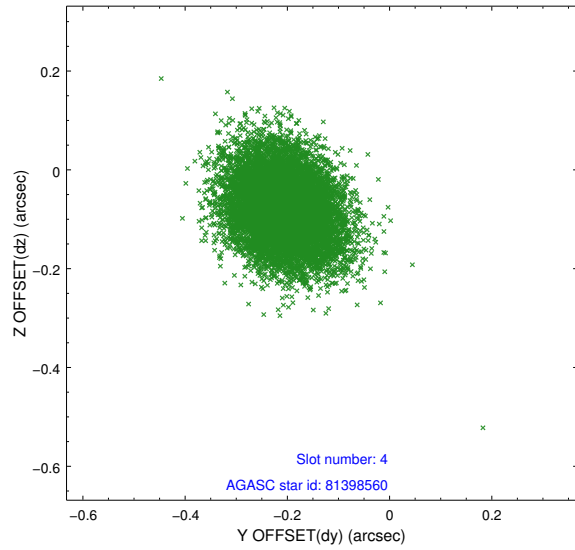
slot	status	id	mag	n_pts	med_dy	med_dz	dr1	dr2	ra	dec	mean_y	mean_z
0	FID	HRC-S-1	6.98	9563	0.115	-0.131	0.008	0.020	0.000000	0.000000	-1155.00	-449.39
1	FID	HRC-S-2	6.97	9563	0.140	-0.098	0.005	0.010	0.000000	0.000000	1244.59	-442.15
2	FID	HRC-S-3	7.01	9561	0.135	-0.072	0.008	0.021	0.000000	0.000000	-1157.52	580.15
3	GUIDE	81398560	6.55	9564	-0.049	-0.034	0.072	0.118	25.145528	8.760778	536.65	1821.42
4	GUIDE	81397560	9.54	9549	-0.208	-0.077	0.087	0.144	24.004098	8.965422	-1735.02	-1623.35
5	GUIDE	81402408	9.33	9560	0.089	0.126	0.092	0.153	25.087980	8.673912	744.27	1510.61
6	GUIDE	81401848	9.57	9557	-0.042	-0.049	0.089	0.148	24.221068	8.860999	-1085.43	-1062.00
7	GUIDE	81403240	9.61	9554	0.214	0.035	0.123	0.215	24.738374	8.119294	2093.67	-417.25

2.4 Star Slots

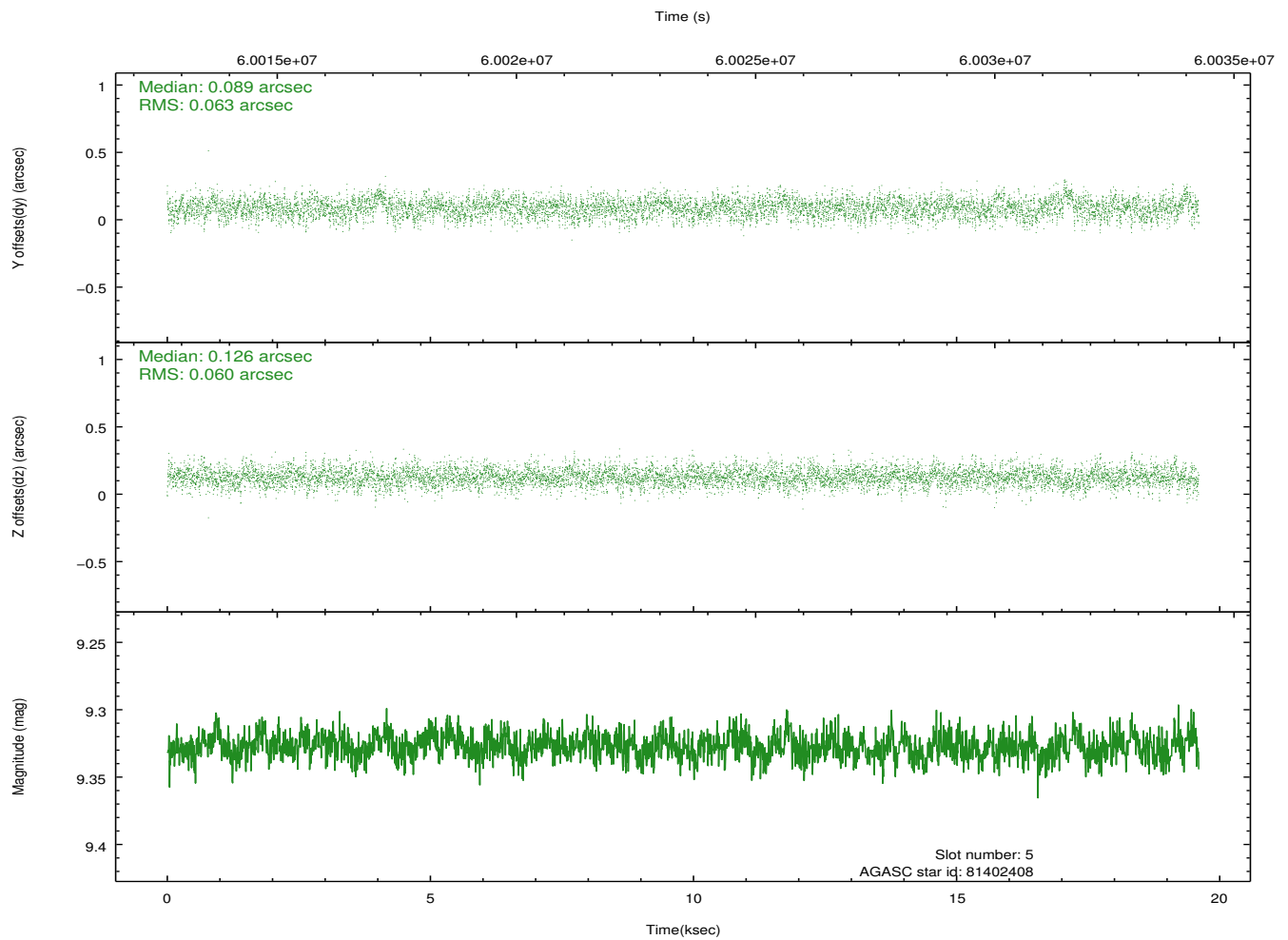
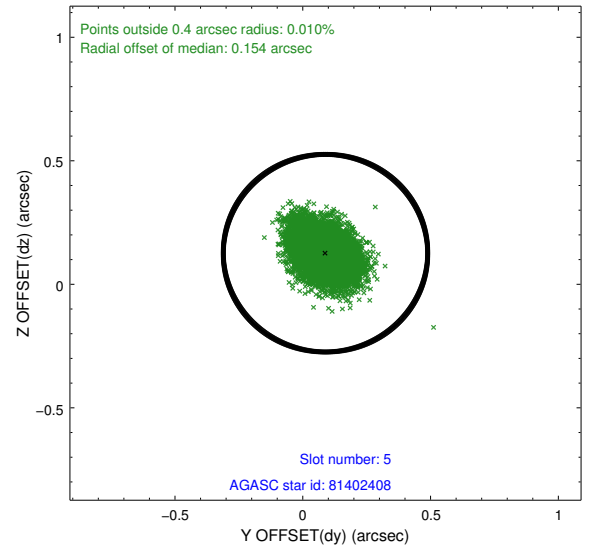
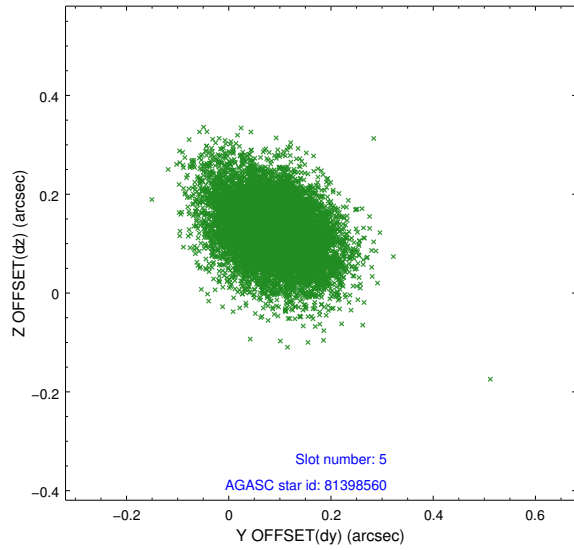
2.4.1 Slot 3



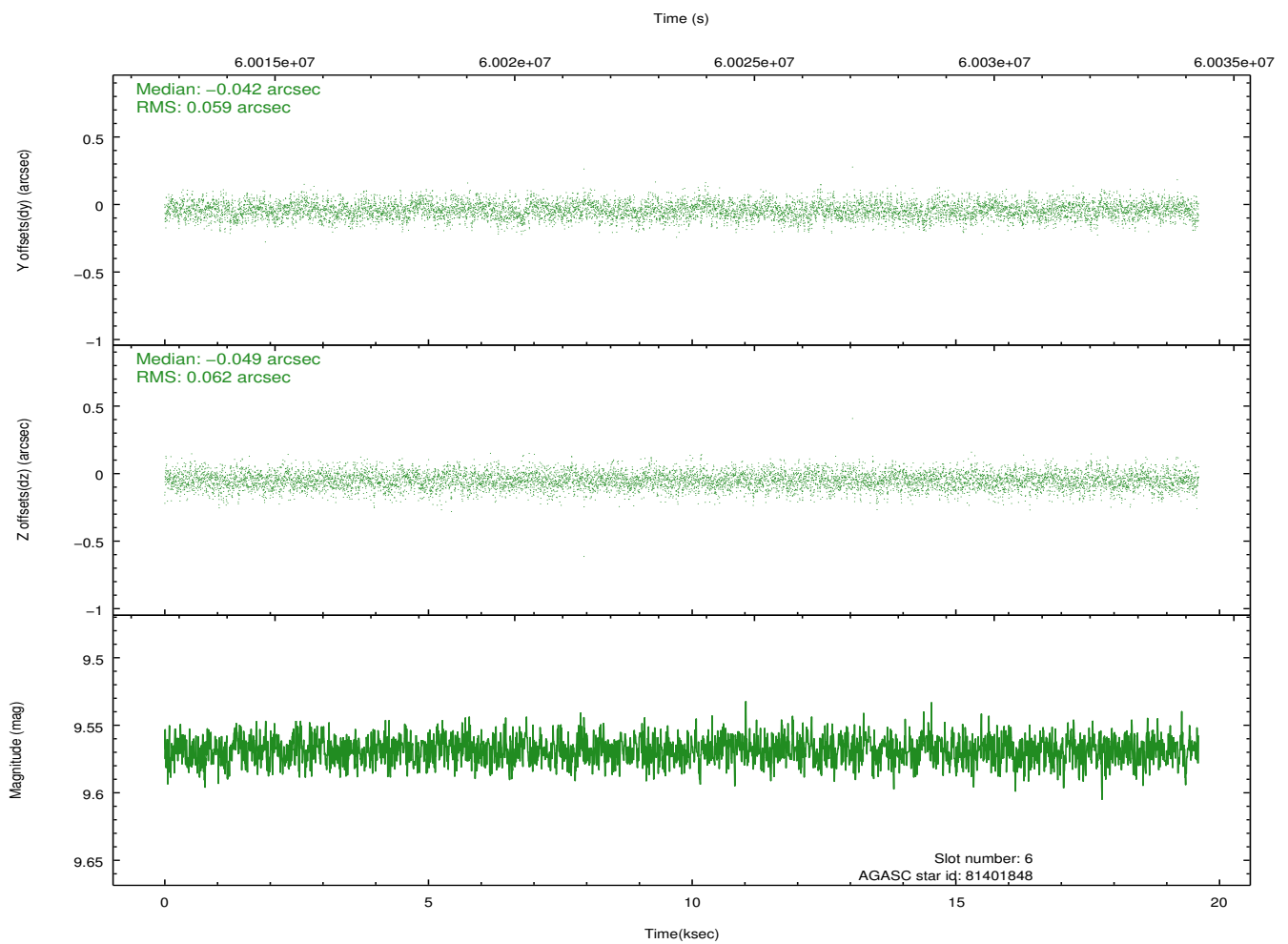
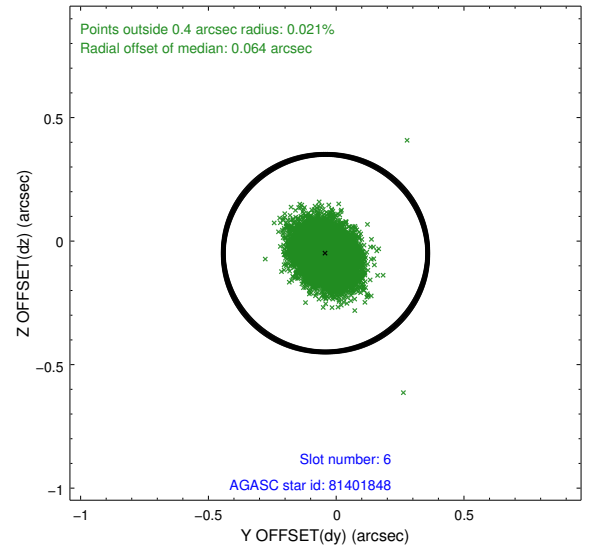
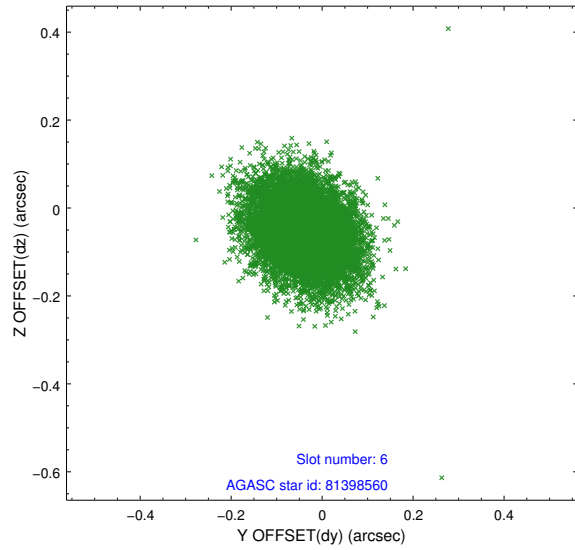
2.4.2 Slot 4



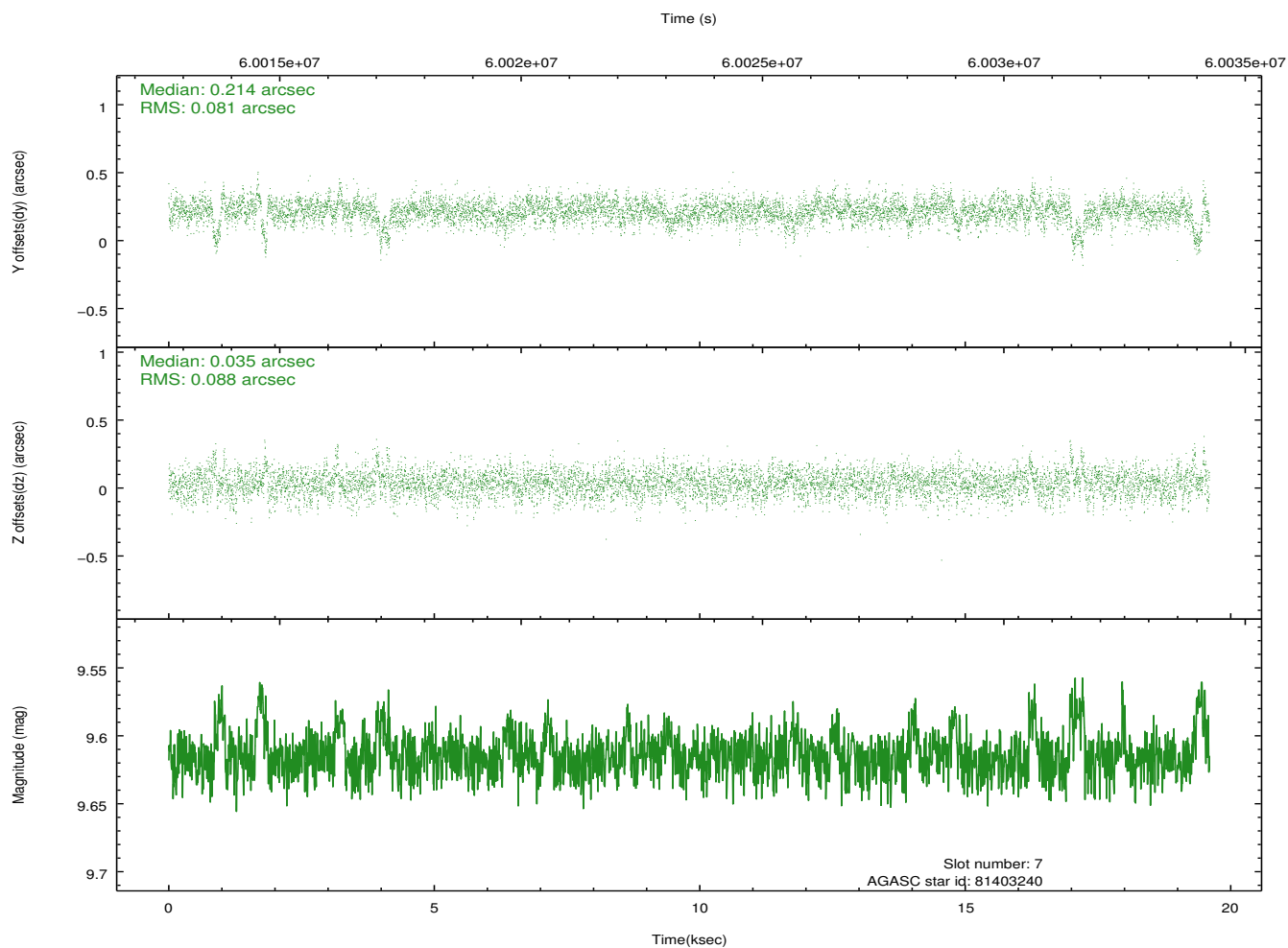
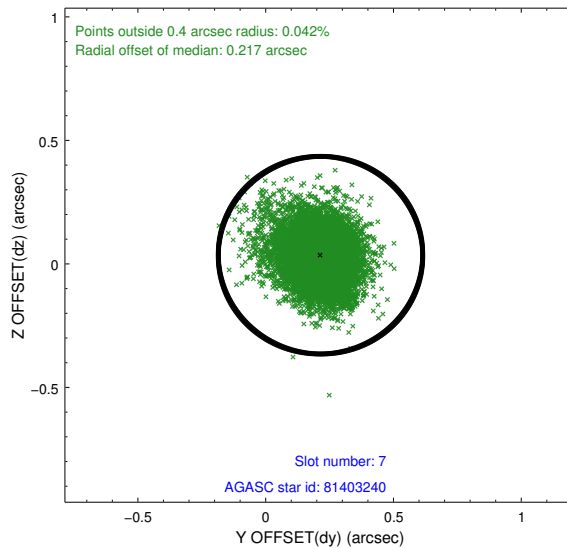
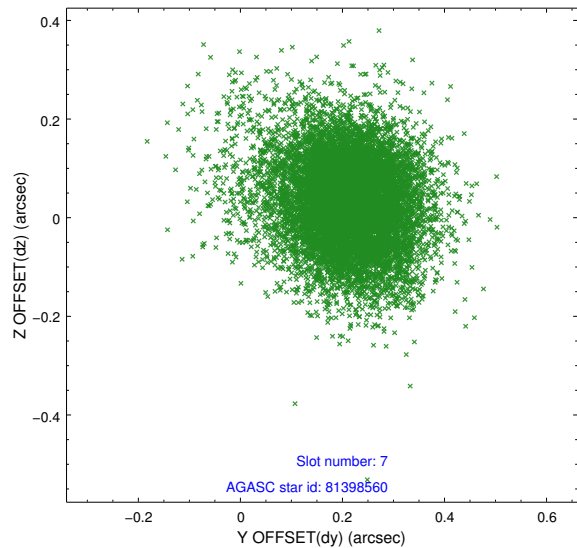
2.4.3 Slot 5



2.4.4 Slot 6

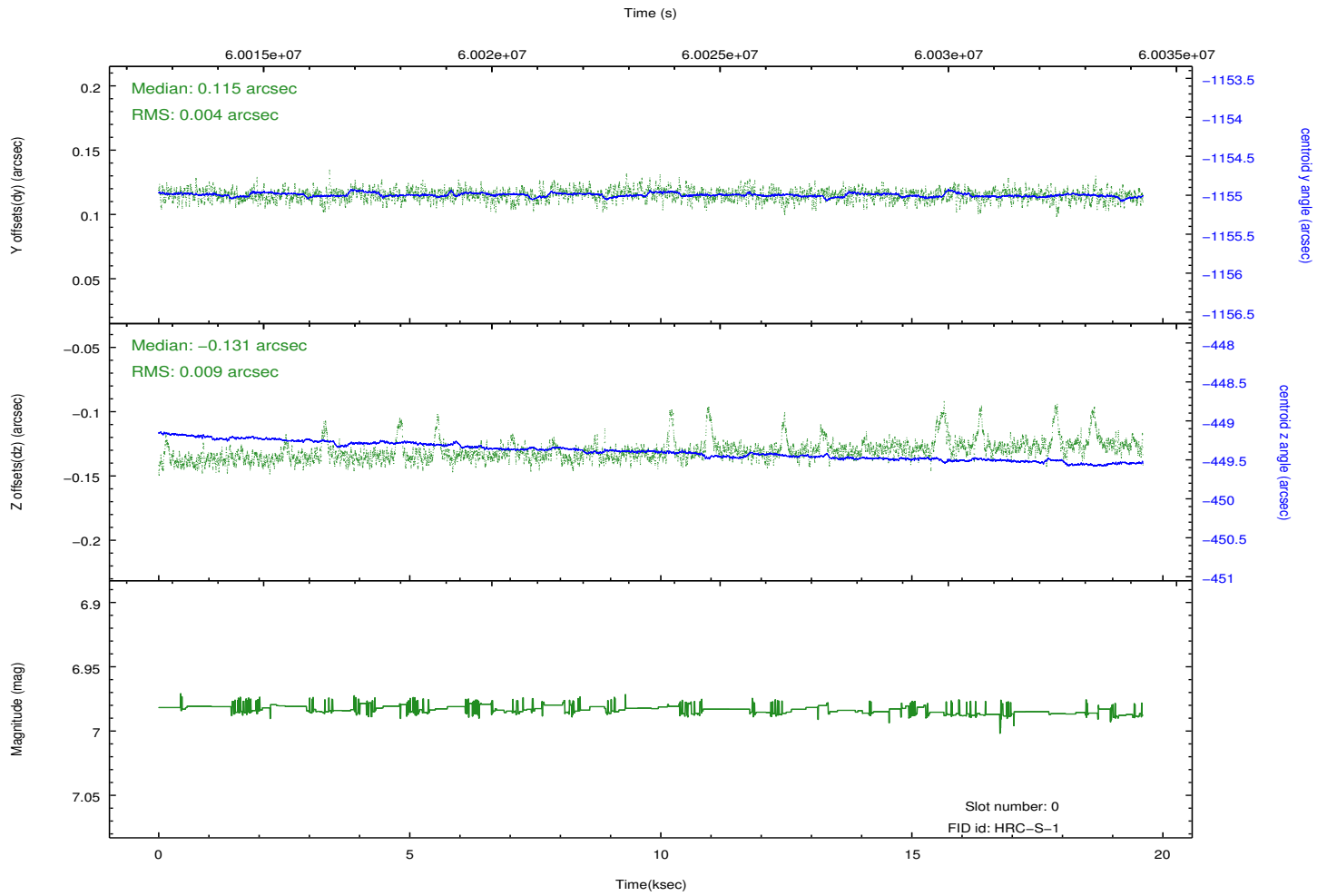
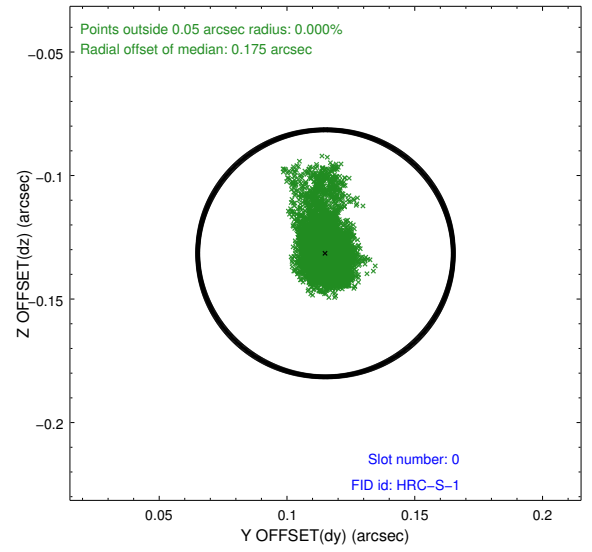
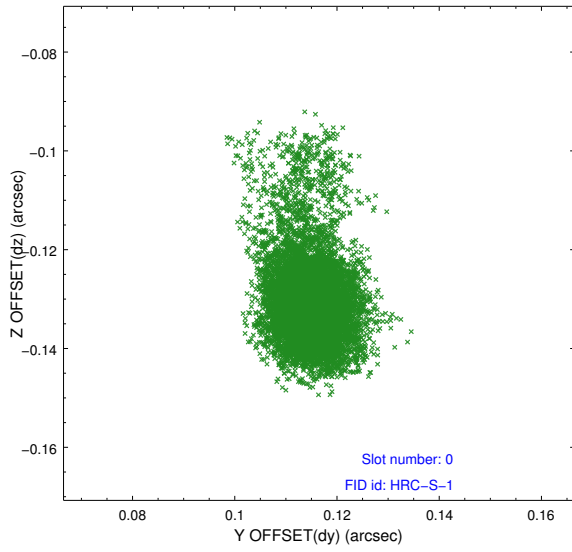


2.4.5 Slot 7

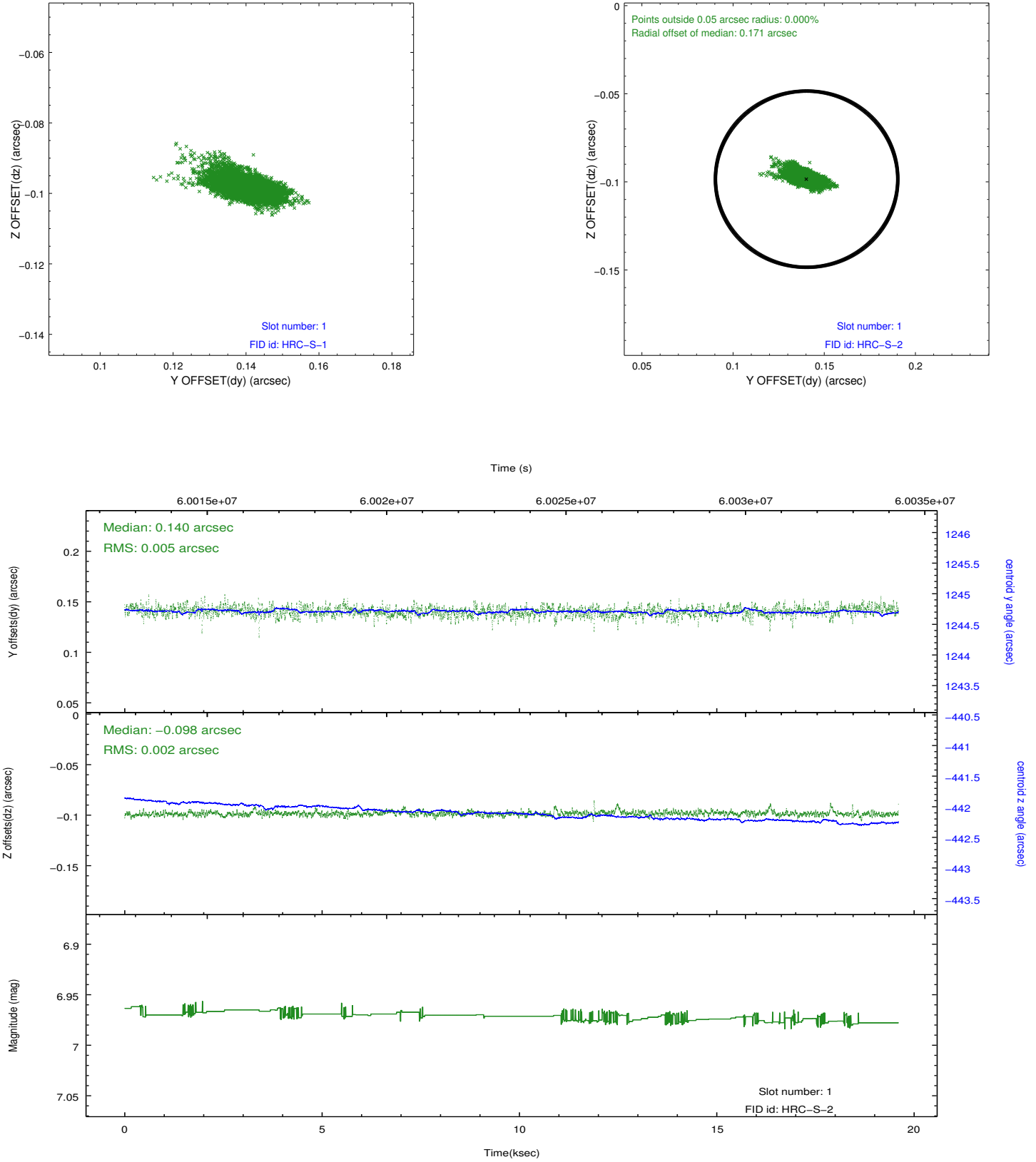


2.5 FID Slots

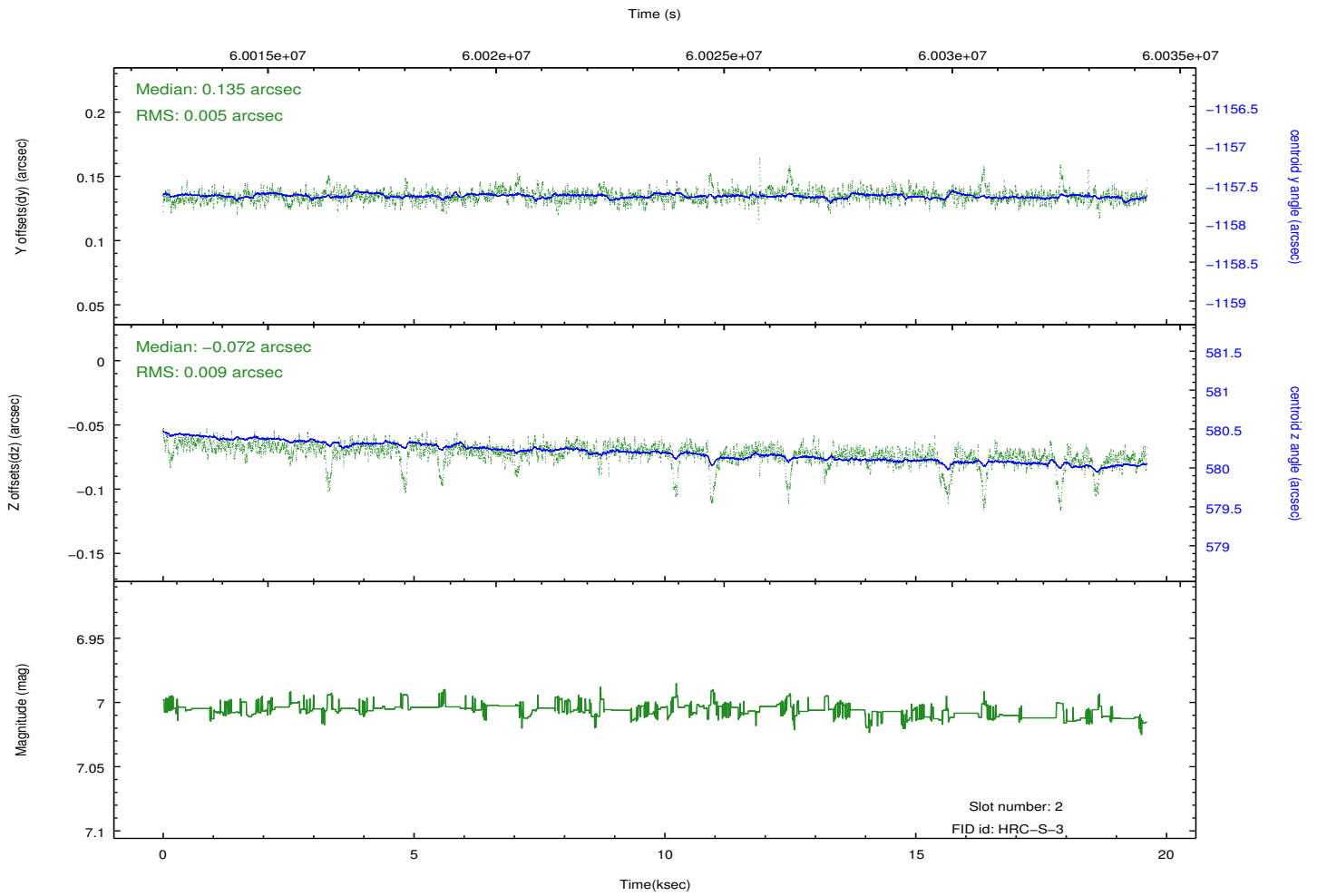
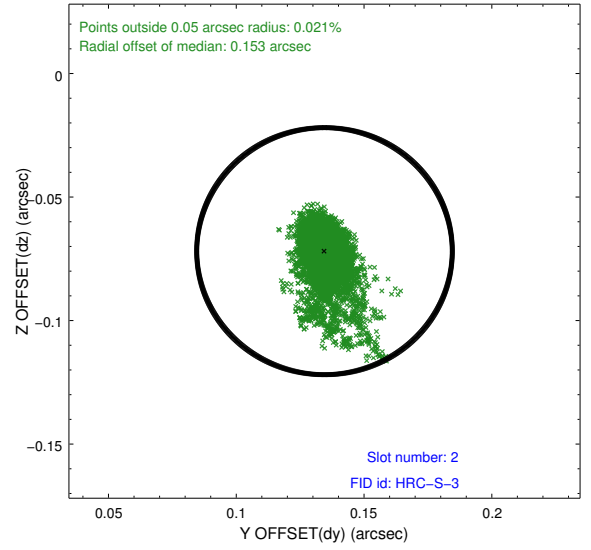
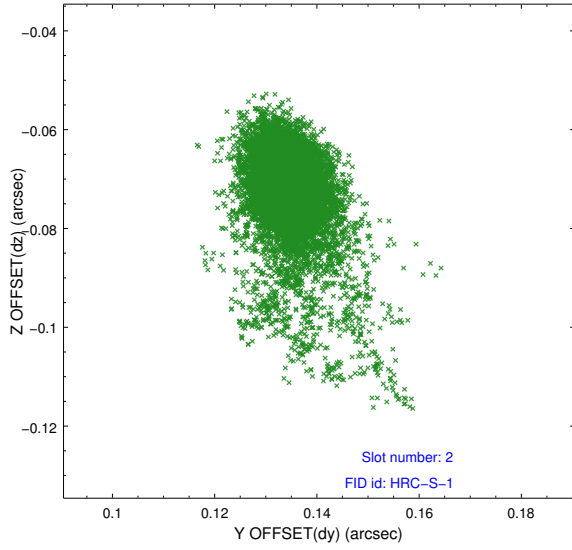
2.5.1 Slot 0



2.5.2 Slot 1

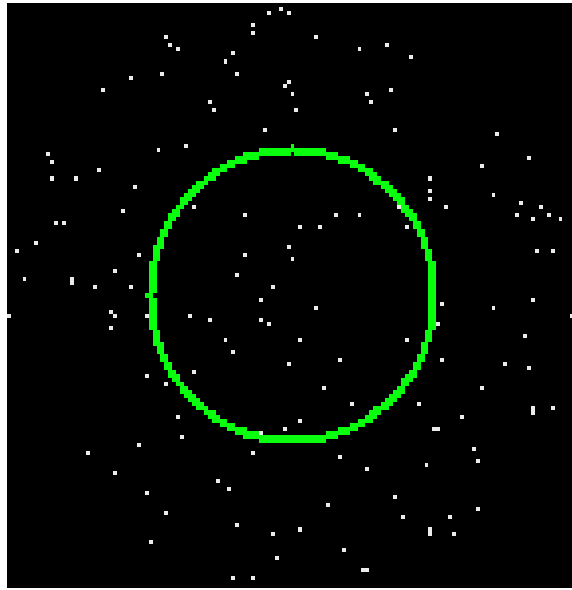


2.5.3 Slot 2

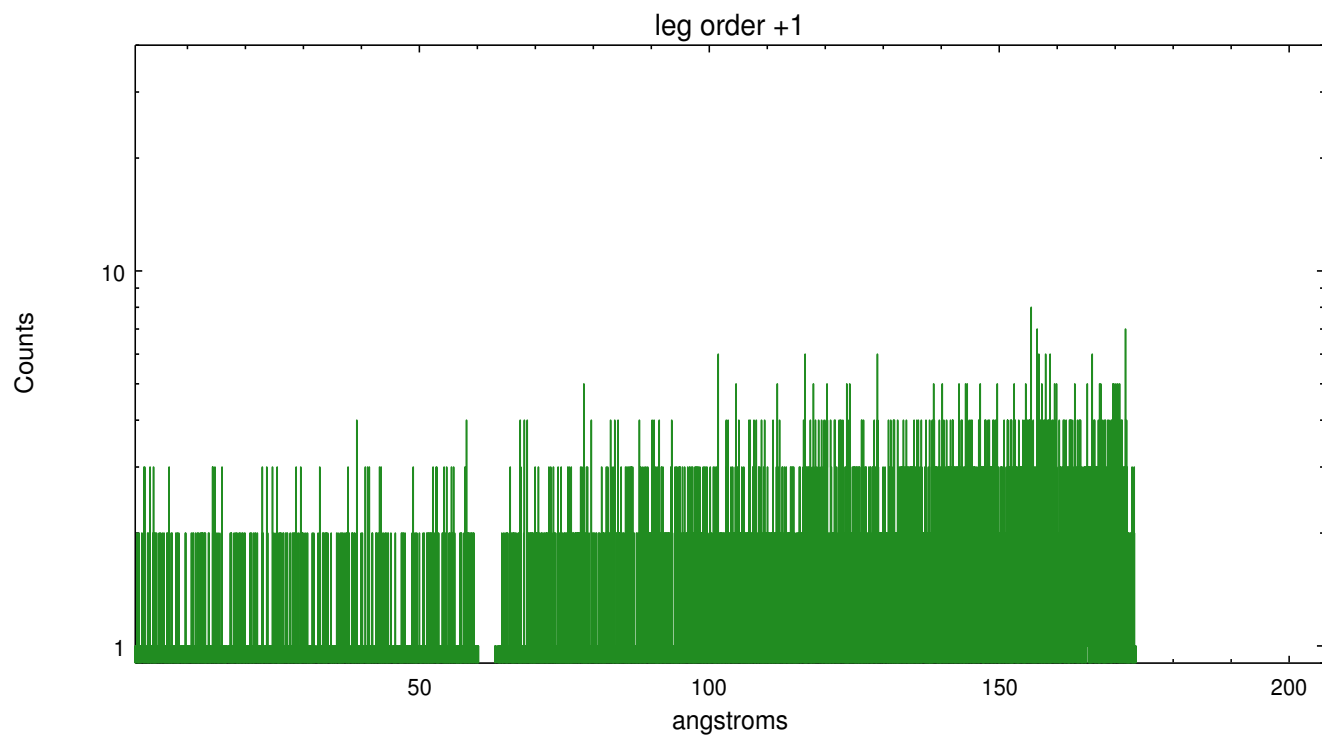
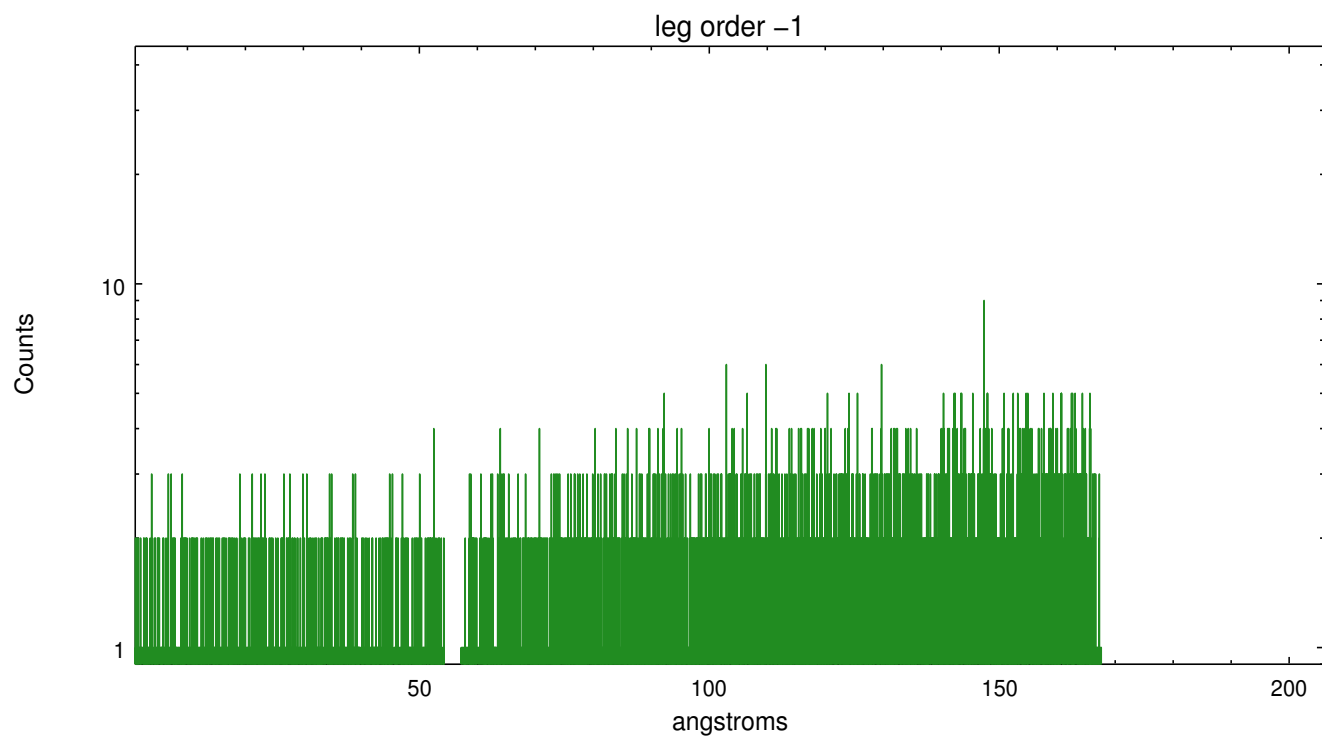


3 Gratings

3.1 LETG Arm



LETG Zero Order



A Summary

A.1 Status

V&V Scientist	Joy Nichols
V&V Date (YYYY-MM-DD)	2010.05.13
V&V Edition	1
V&V Disposition and Status	OK
V&V Charge Time	14.778

A.2 Comments

Extraction of the spectral data has been done in sky coordinates with default parameters. No zeroth order position was detected since the target is moving, so the pointing direction was taken as the initial position of the target.

The extracted spectral data are INCORRECT. In order to use the data from this observation, the event positions must be placed in the coordinate system of the moving target, for example with `sso_freeze` in CIAO. Then the extraction of the spectral data should be done starting at Level 1.5 processing. Some manual intervention may be required to identify the most appropriate position for the zeroth order target position.