

# V&V Reference Report

## L2 ASCDS Version : 8.5.1.1

Observation 14884 - L2 Version 3  
Chandra X-Ray Center

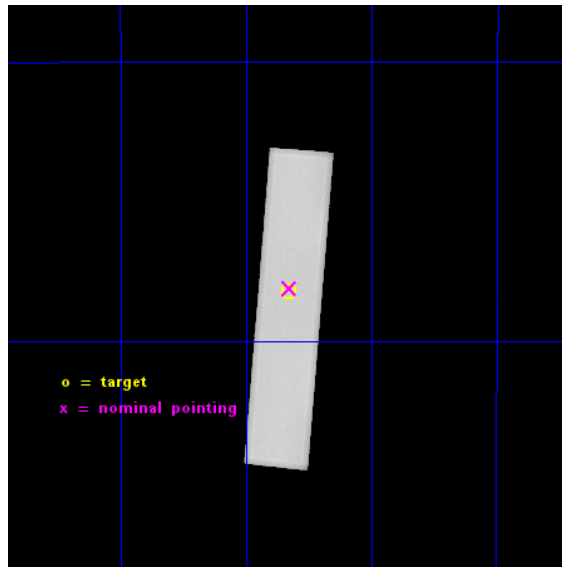
L2 Processing Date : Dec 3 2014

## Contents

<b>1</b>	<b>Front</b>	<b>2</b>
<b>2</b>	<b>OBI</b>	<b>3</b>
2.1	OBI . . . . .	3
2.1.1	Images . . . . .	3
2.1.2	Parameters . . . . .	4
2.1.3	Events . . . . .	4
2.2	Compared Parameters . . . . .	5
2.3	Aspect . . . . .	6
2.4	Star Slots . . . . .	9
2.4.1	Slot 3 . . . . .	9
2.4.2	Slot 4 . . . . .	10
2.4.3	Slot 5 . . . . .	11
2.4.4	Slot 6 . . . . .	12
2.4.5	Slot 7 . . . . .	13
2.5	FID Slots . . . . .	14
2.5.1	Slot 0 . . . . .	14
2.5.2	Slot 1 . . . . .	15
2.5.3	Slot 2 . . . . .	16
<b>A</b>	<b>Summary</b>	<b>17</b>
A.1	Status . . . . .	17
A.2	Comments . . . . .	17

# 1 Front

seq_num	502008	Sequence number
obs_id	14884	Observation id
title	An asymmetric X-ray nebula around the magnetar SGR1806-20?	Proposa
observer	Dr. Nanda Rea	Principal investigator
object	SGR 1806-20	Source name
ra_targ	272.16375	Observer's specified target RA [deg]
dec_targ	-20.410972	Observer's specified target Dec [deg]
ra_nom	272.16336887263	Nominal RA [deg]
dec_nom	-20.406254945687	Nominal Dec [deg]
roll_nom	94.78816922014	Nominal Roll [deg]
revision	3	Processing version of data
ontime	30177.282884836	[s]
livetime	30035.257750633	Ontime multiplied by DTCOR
l2events	1538668	Number of level 2 events

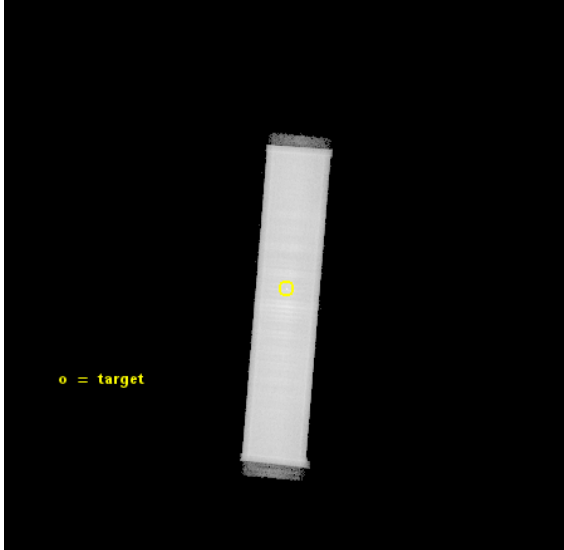


## 2 OBI

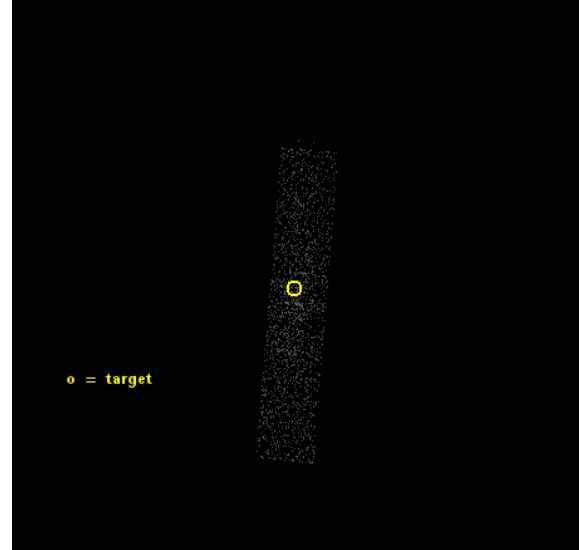
### 2.1 OBI

#### 2.1.1 Images

Level 1 Image



Level 1 Bad Events



### 2.1.2 Parameters

obi_num	0	Obi number	sched_exp_time	30000.413000	[s] Scheduled observation exposure time
ascdsver	10.3	Processing system revision	ontime	30177.282884836	[s]
caldbver	4.6.4	&#160	l1events	2155448	Number of level 1 events
date	2014-12-03T04:23:31	Date and time of file creation			
revision	3	Processing version of data			

### 2.1.3 Events

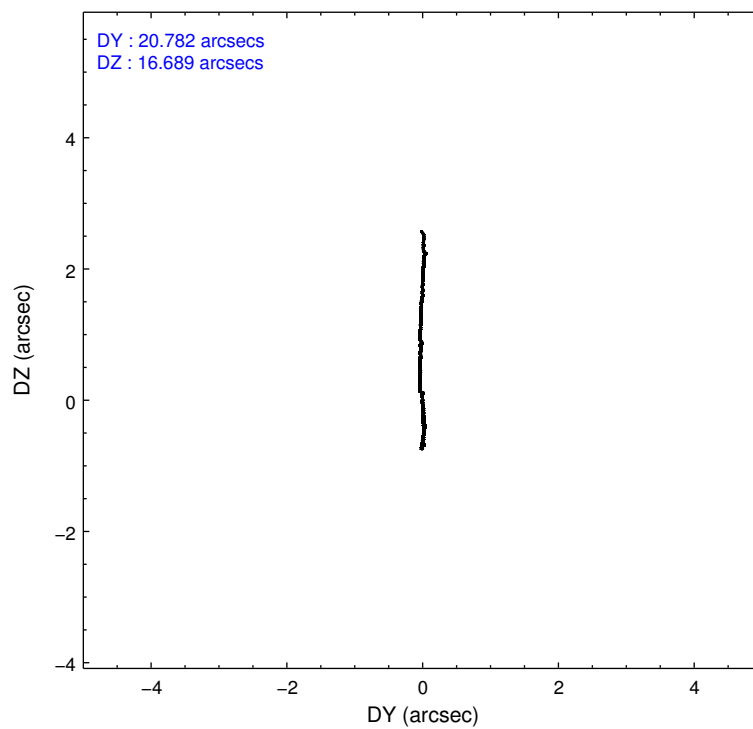
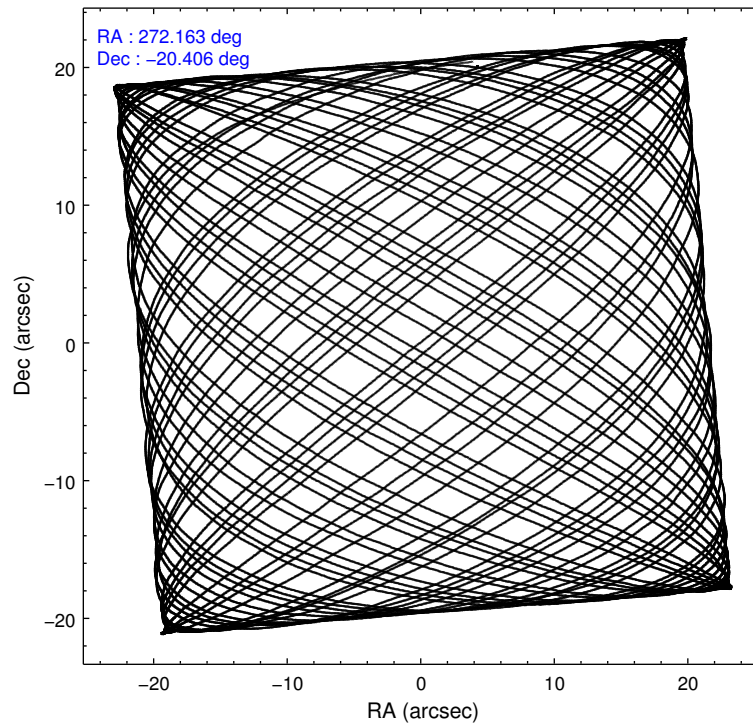
#### Level 1 Events

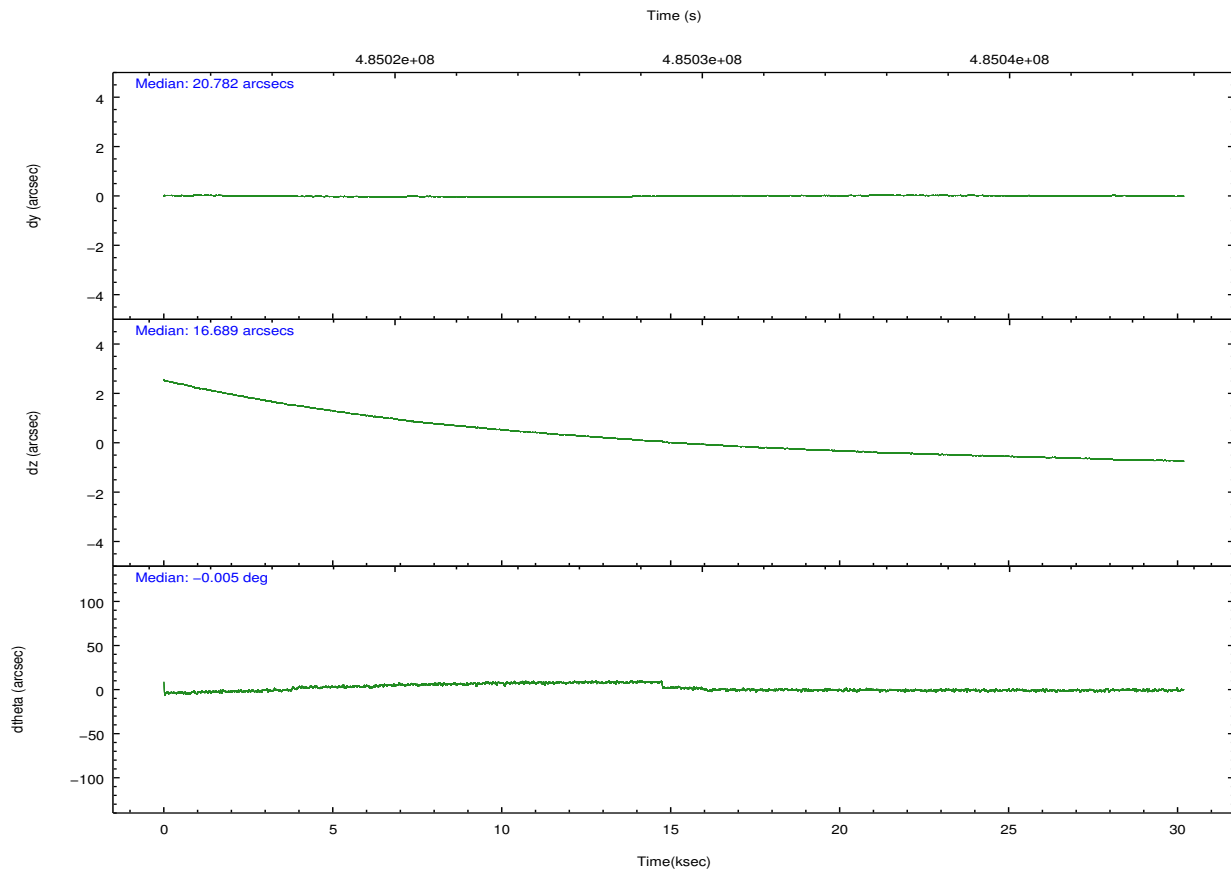
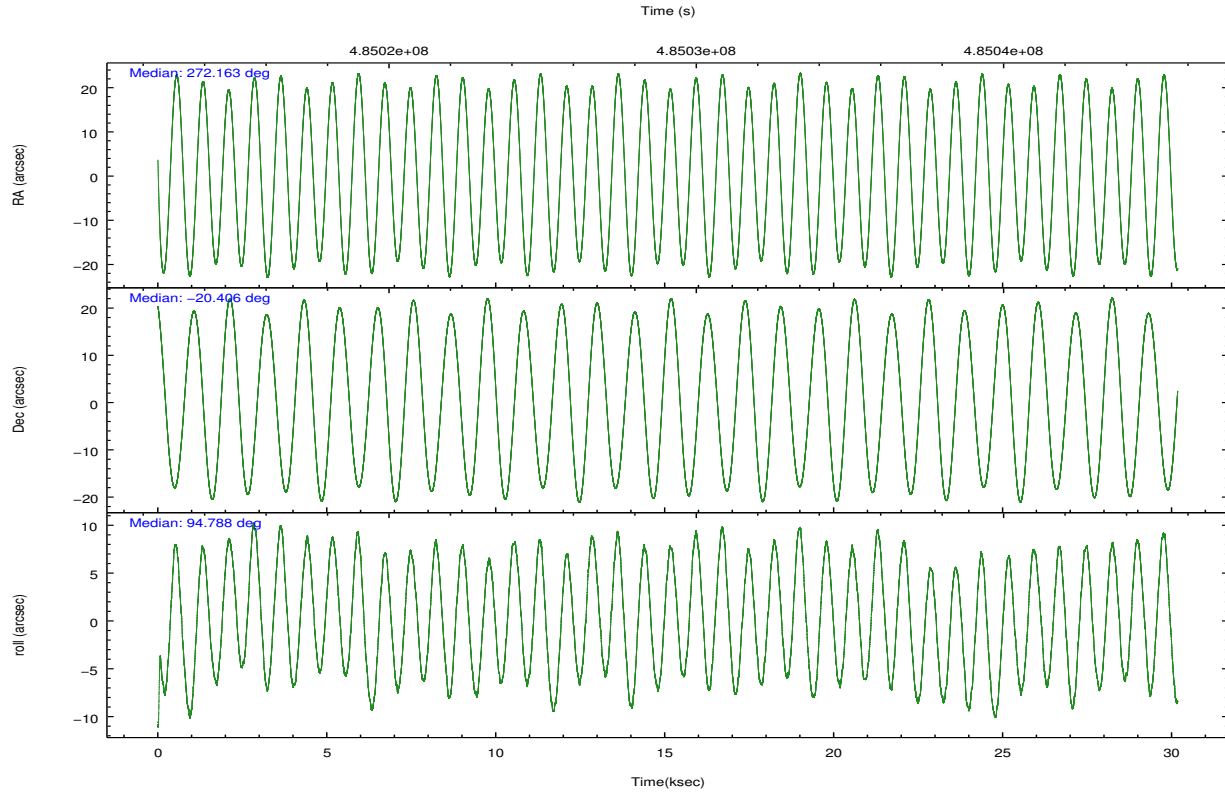
	<b>segment 1</b>	<b>segment 2</b>	<b>segment 3</b>
level 1 events	2103	2153341	4
rejected events	95	82347	0
rejected %	4%	3%	0%

## 2.2 Compared Parameters

Parameter	Planned	Actual	Parameter	Planned	Actual
Instrument	HRC	HRC	Obspar format version number	7	7
Detector	HRC-S	HRC-S	Obspar file type	PREDICTED	ACTUAL
Grating	NONE	NONE	Obspar update status	NONE	UPDATED
Data mode	OBSERVING	OBSERVING			
Observation mode	POINTING	POINTING			
[deg] Pointing RA	272.182111	272.1633688726321			
[deg] Pointing Dec	-20.428946	-20.40625494568706			
[deg] Pointing Roll	94.727373	94.78816922013985			
[mm] SIM focus pos	-1.533336	-1.526339935833849			
[mm] SIM defocus	7.710433287538843e-07	0.006996703570447904			
[mm] SIM translation stage pos	250.455976	250.466033080201			
[mm] SIM translation stage offset	0	-0.01005468664627074			
[s] Observation start time (MET)	485014165.184000	485012815.2074			
Observation start date	2013-05-15T14:08:18	2013-05-15T13:46:55			
[s] Observation end time (MET)	485044165.184000	485044304.74661			
Observation end date	2013-05-15T22:28:18	2013-05-15T22:31:44			

## 2.3 Aspect





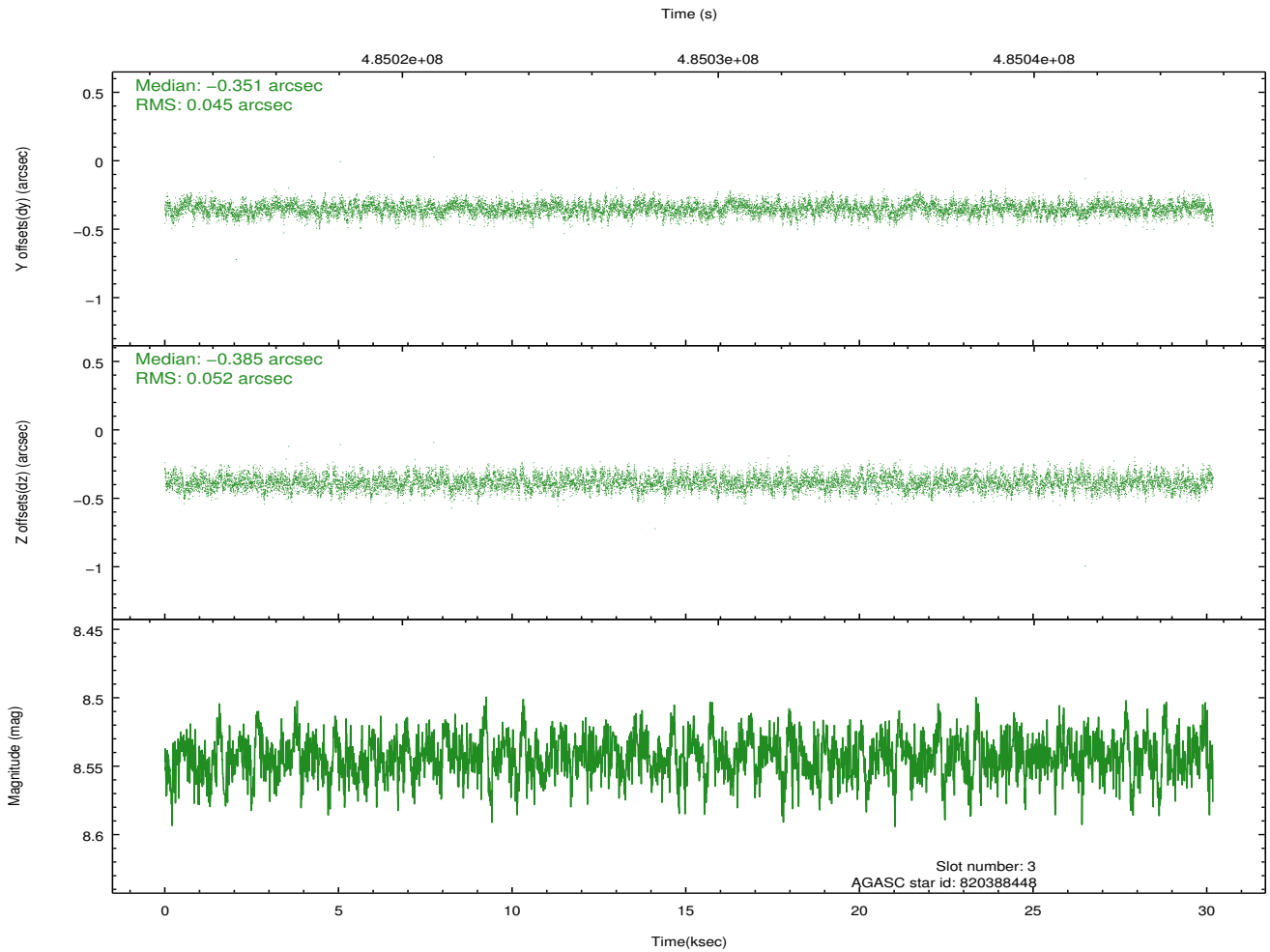
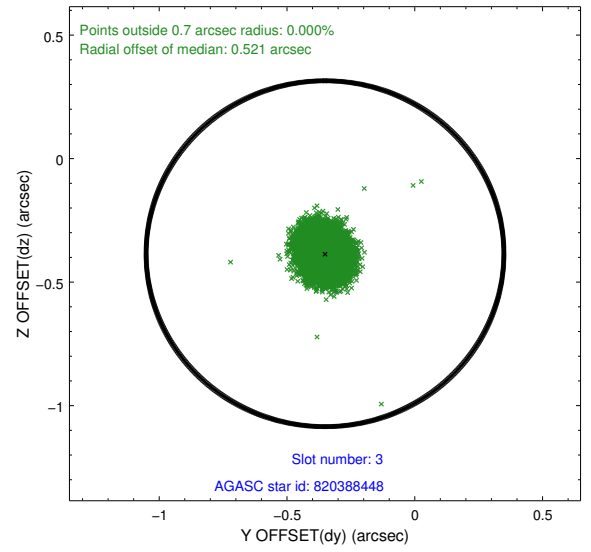
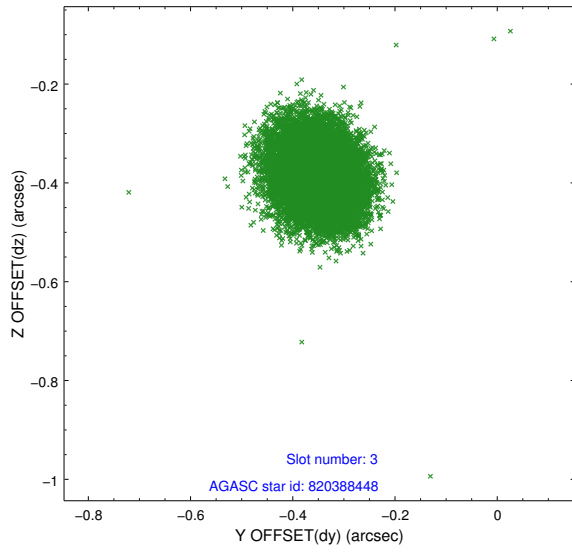
### Slot Statistics

slot	status	used	id	mag	n_pts	med_dy	med_dz	dr1	dr2	ra	dec	mean_y	mean_z
0	FID		HRC-S-1	7.07	7361	-0.079	-0.160	0.008	0.016	0.000000	0.000000	-1175.47	-465.92
1	FID		HRC-S-2	7.05	7361	0.212	-0.144	0.056	0.085	0.000000	0.000000	1224.31	-458.55
2	FID		HRC-S-4	7.01	7360	0.268	-0.002	0.054	0.078	0.000000	0.000000	1223.26	566.28
3	GUIDE	used	820388448	8.54	14710	-0.351	-0.385	0.073	0.117	271.630569	-19.882892	2109.77	1698.76
4	GUIDE	used	820399496	8.73	14714	-0.130	-0.202	0.086	0.142	271.495152	-19.953854	1891.55	2176.08
5	GUIDE	used	822617304	8.98	14656	0.231	0.358	0.105	0.172	272.421826	-20.831304	-1510.09	-683.94
6	GUIDE	used	822098736	8.50	14714	0.059	0.323	0.095	0.153	272.269355	-19.875225	1962.35	-458.41
7	GUIDE	used	822614704	7.86	14719	0.190	-0.087	0.069	0.109	272.076243	-20.843493	-1457.54	477.83

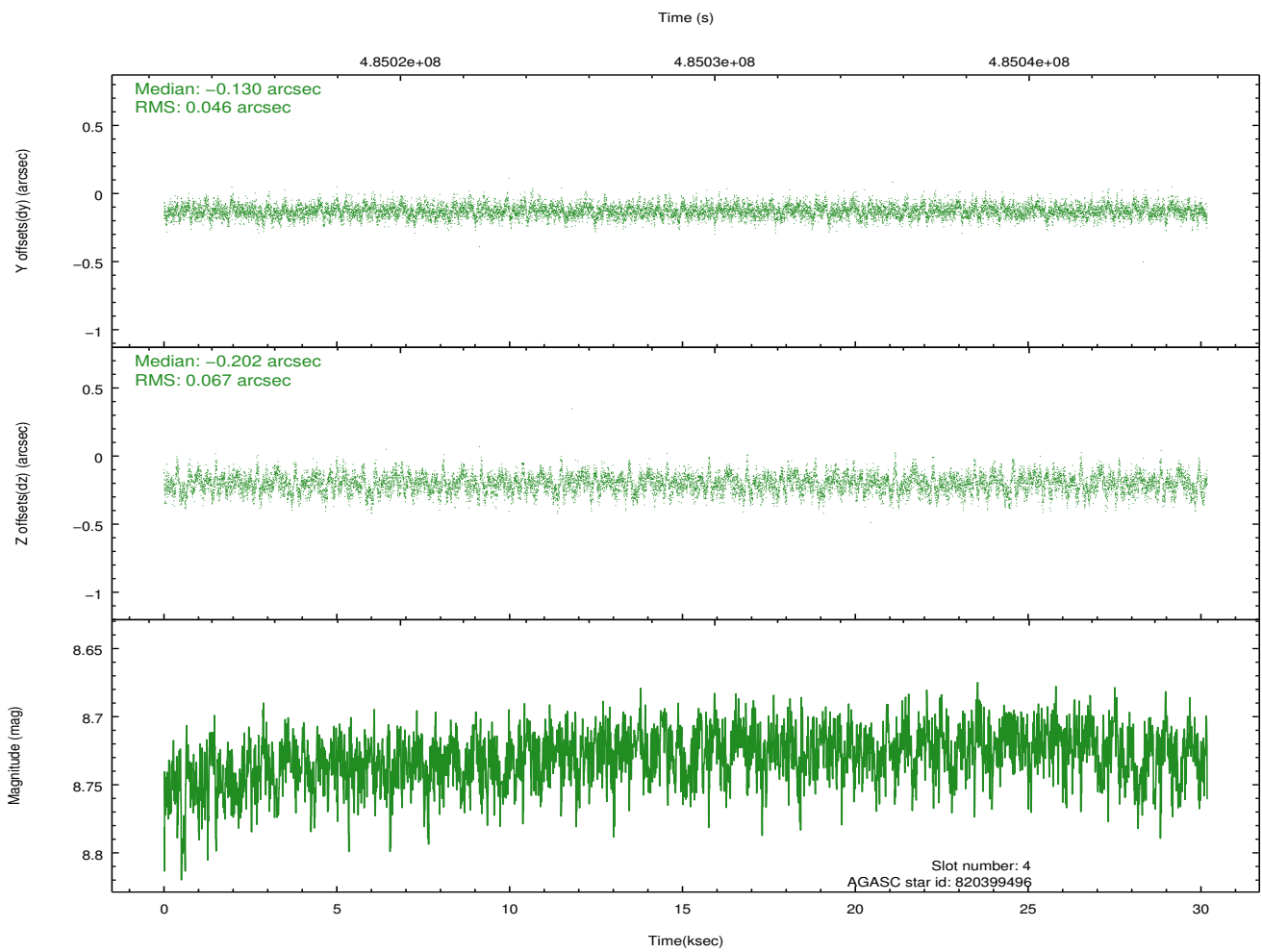
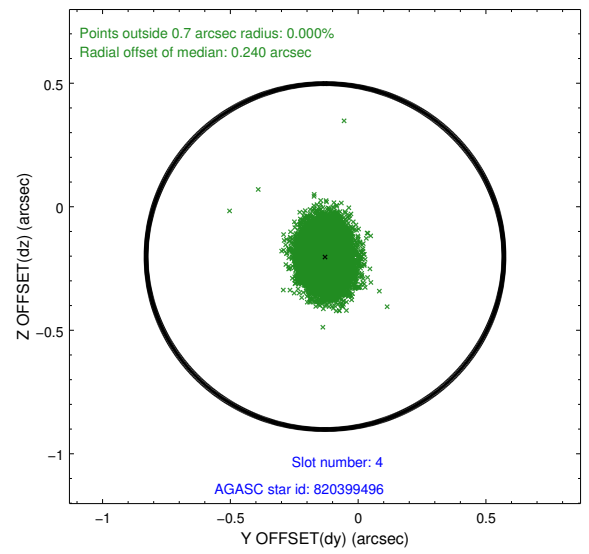
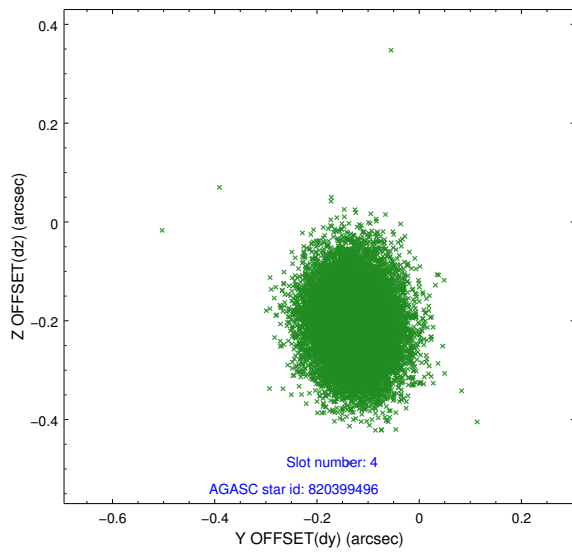
∞

## 2.4 Star Slots

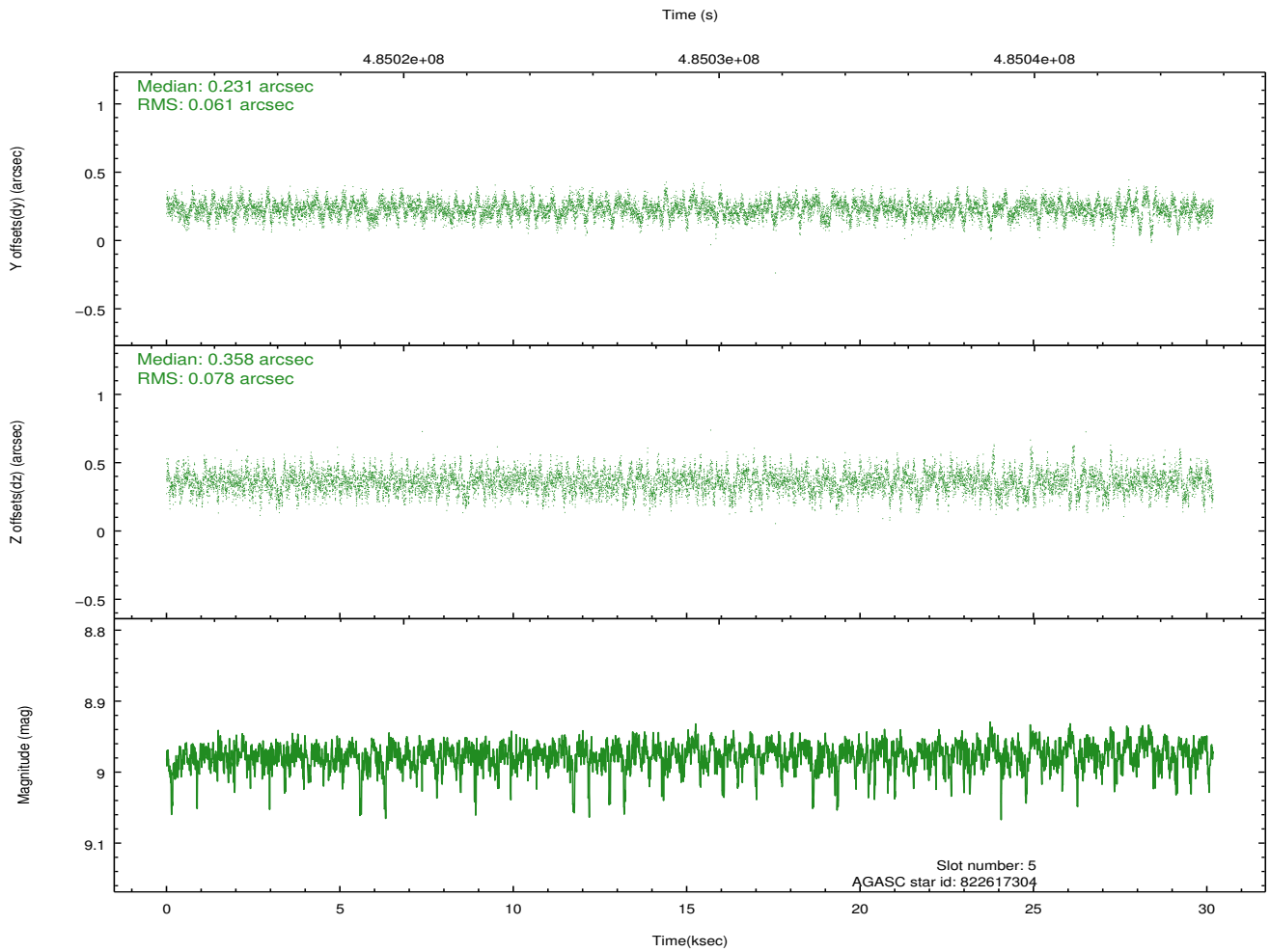
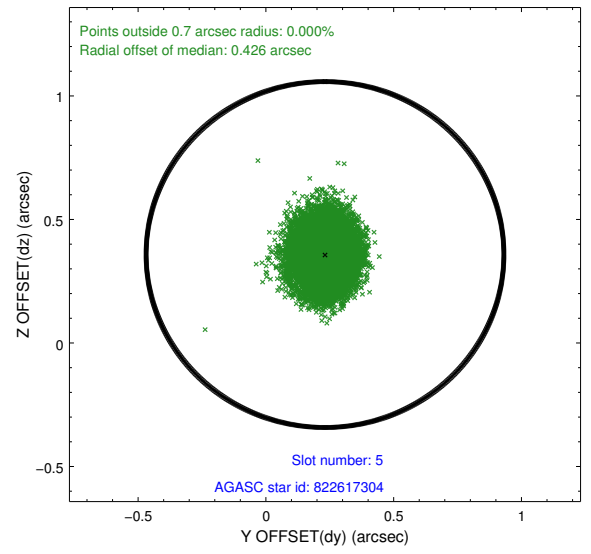
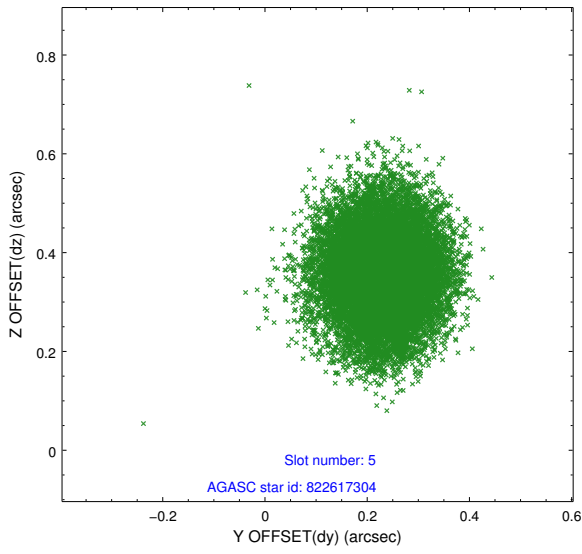
### 2.4.1 Slot 3



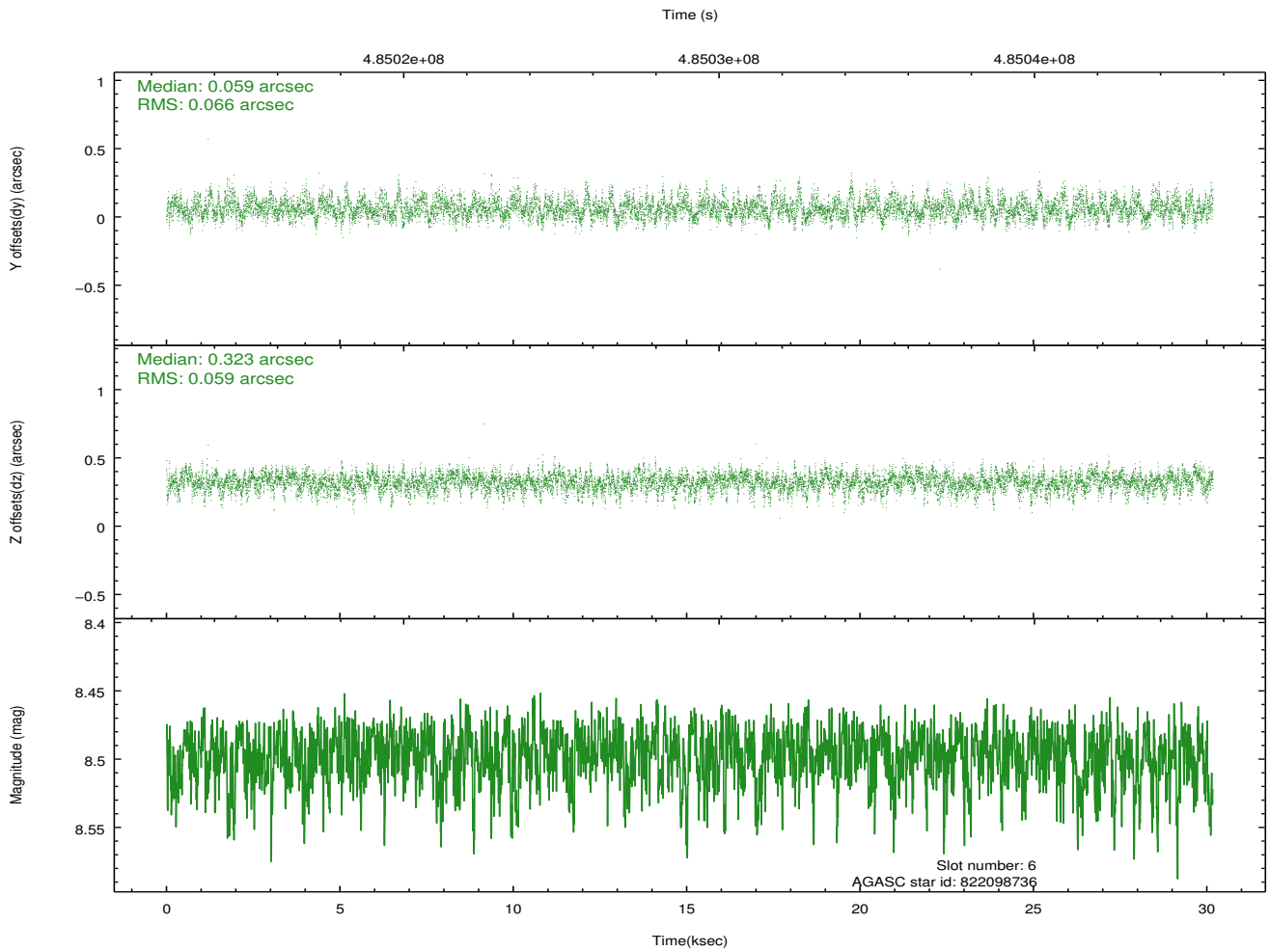
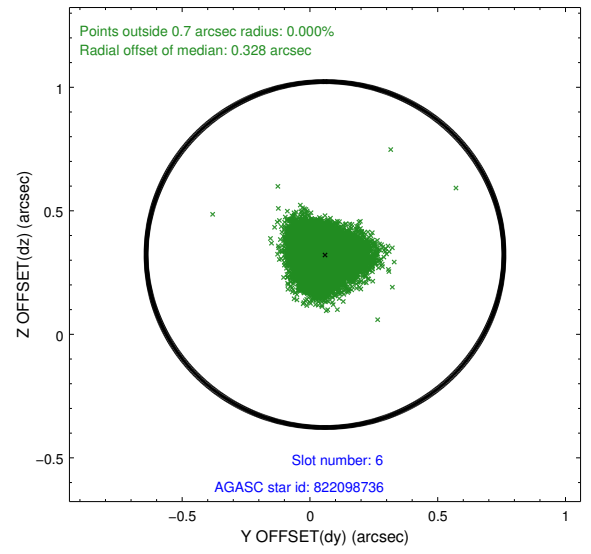
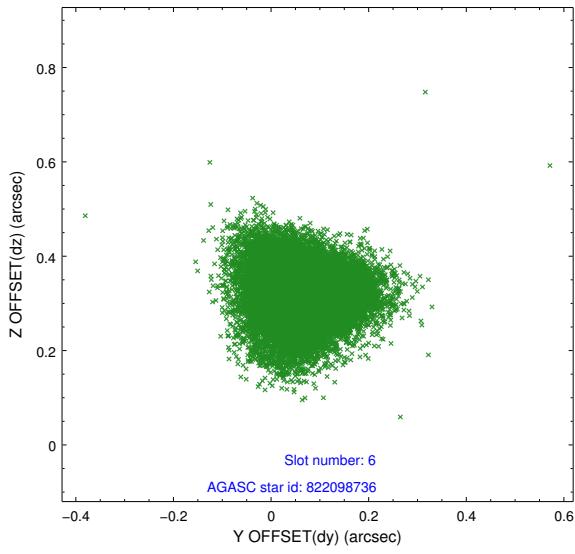
## 2.4.2 Slot 4



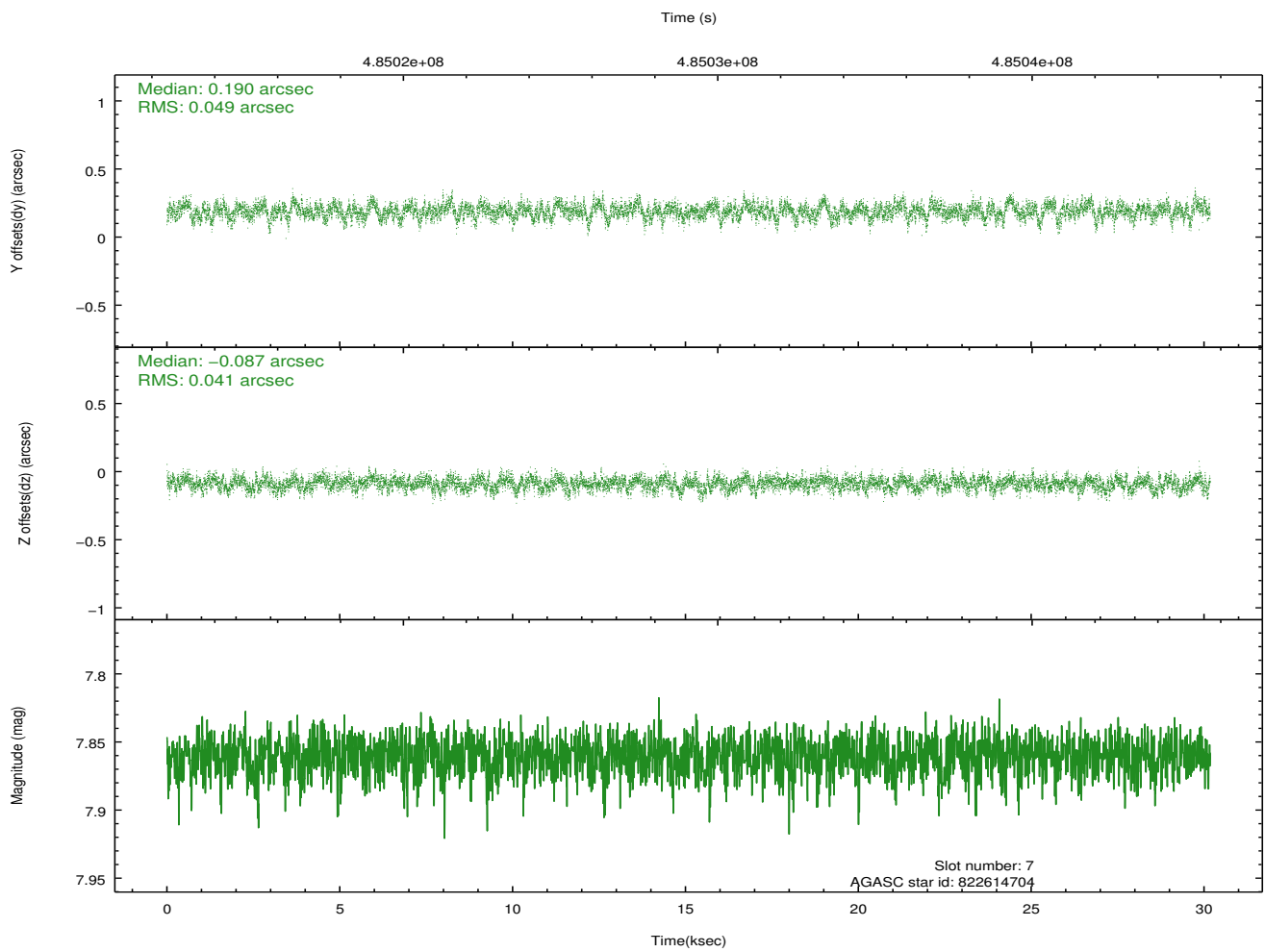
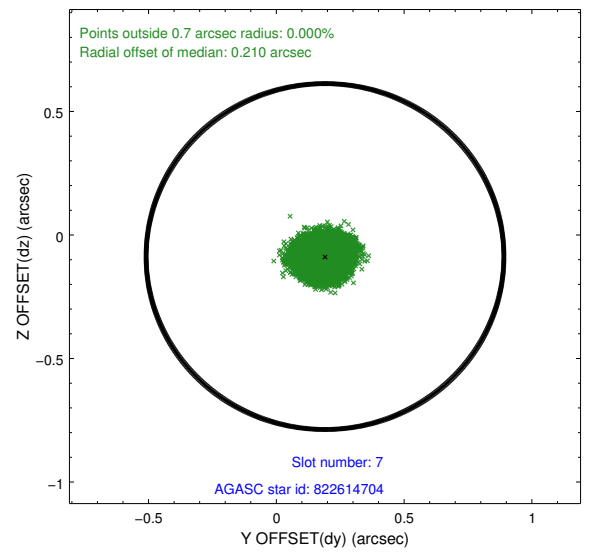
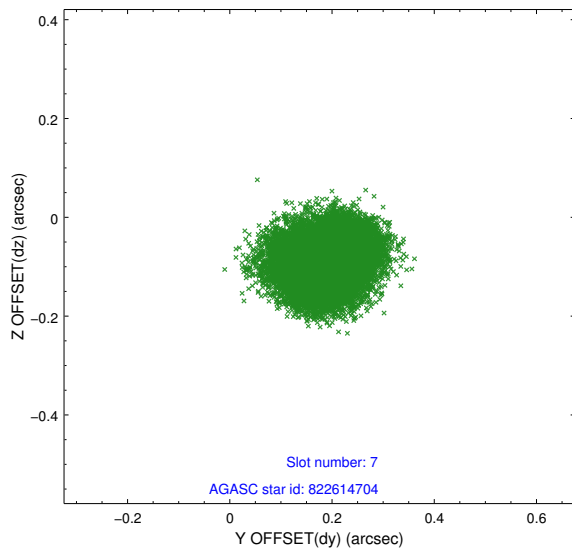
### 2.4.3 Slot 5



### 2.4.4 Slot 6

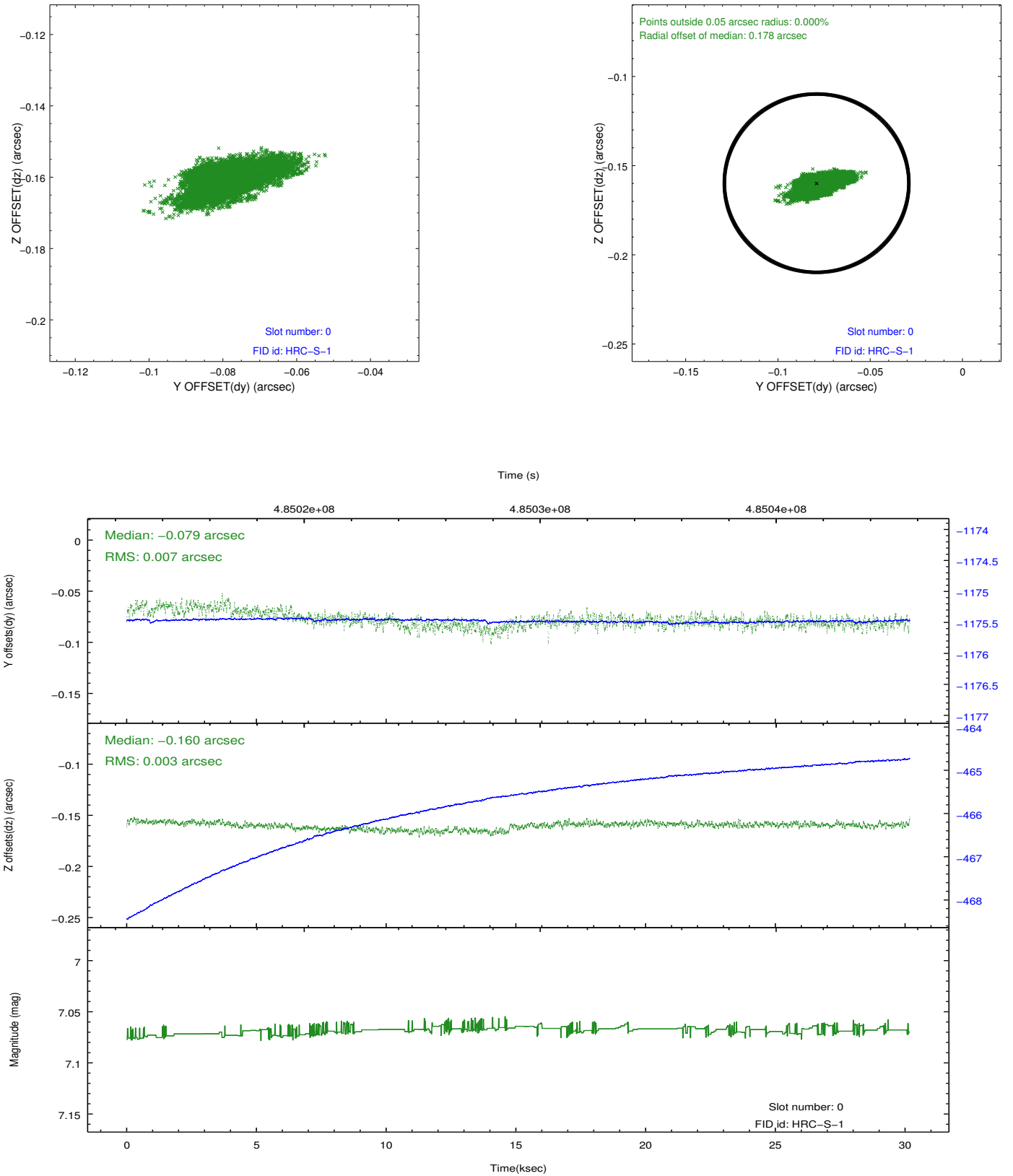


## 2.4.5 Slot 7

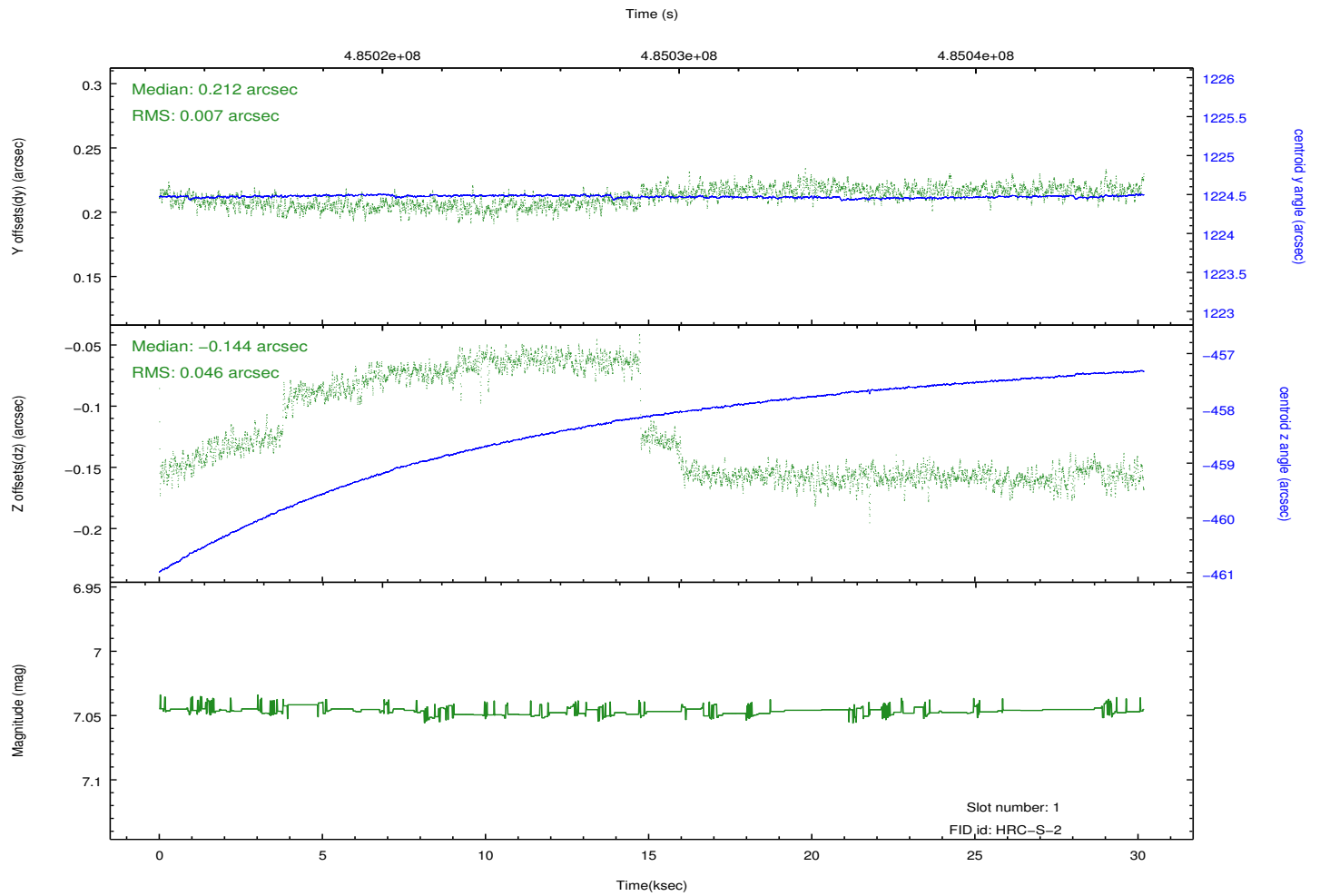
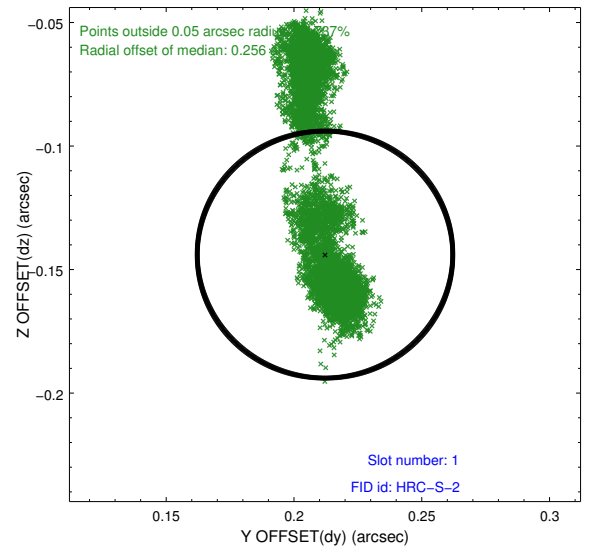
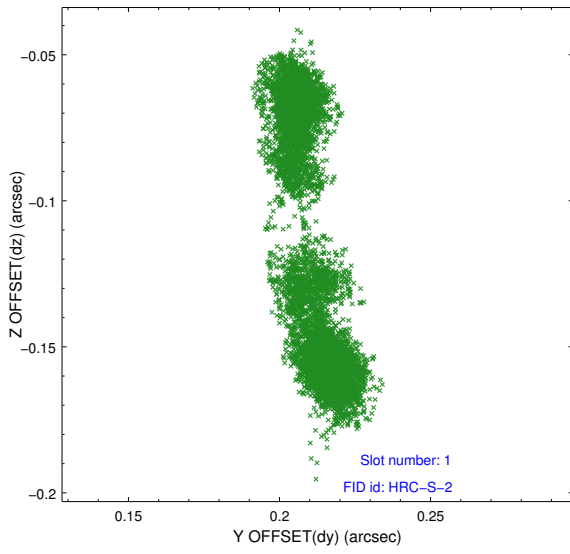


## 2.5 FID Slots

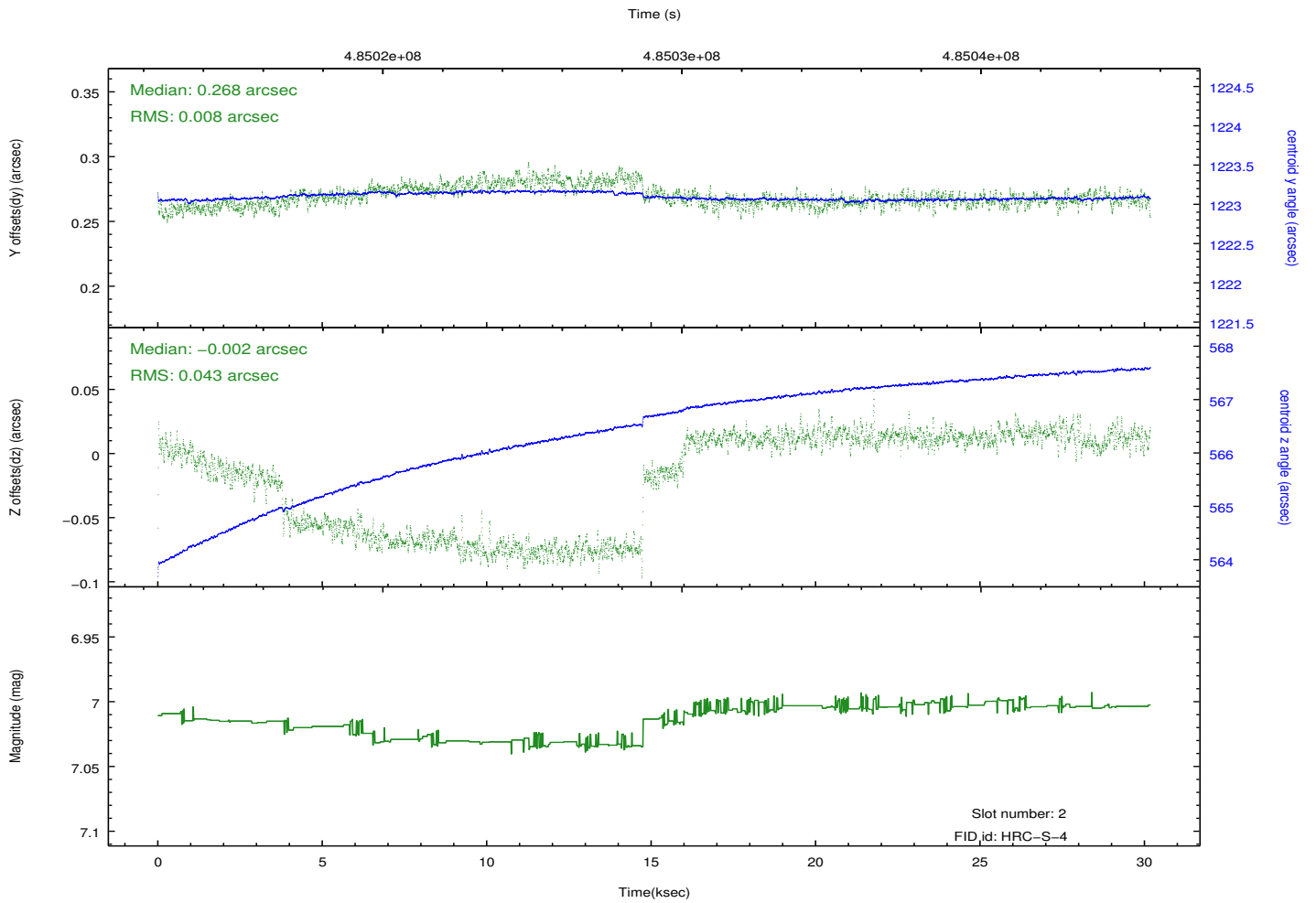
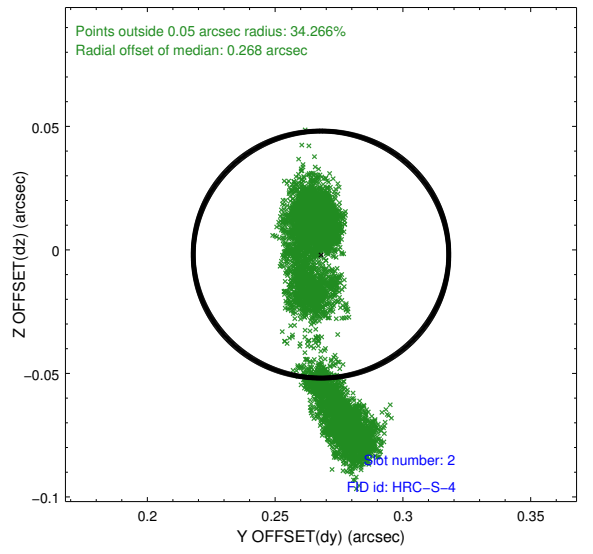
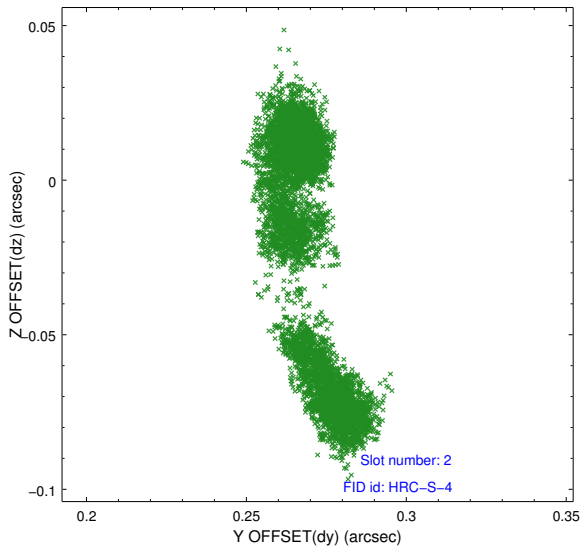
### 2.5.1 Slot 0



## 2.5.2 Slot 1



### 2.5.3 Slot 2



# A Summary

## A.1 Status

V&V Scientist	Jen Lauer
V&V Date (YYYY-MM-DD)	2014.12.10
V&V Edition	1
V&V Disposition and Status	OK
V&V Charge Time	30.177282884836

## A.2 Comments

These data have been reprocessed with new aspect alignment calibration files that correct small mean offsets (up to 0.4 arcsecs) and improve overall astrometric accuracy. The new calibration was determined using data from the time period being reprocessed and was performed using cross-correlation of X-ray sources with radio and optical counterparts.