

V&V Reference Report

L2 ASCDS Version : 10.2.4

Observation 16174 - L2 Version 1
Chandra X-Ray Center

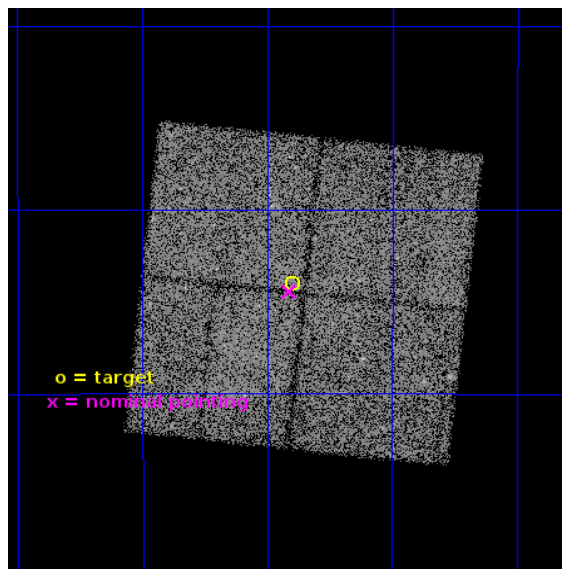
L2 Processing Date : Jul 30 2014

Contents

1	Front	2
2	OBI	3
2.1	OBI	3
2.1.1	Images	3
2.1.2	Bias	3
2.1.3	Parameters	4
2.1.4	Events	4
2.2	Compared Parameters	5
2.3	Aspect	6
2.4	Star Slots	9
2.4.1	Slot 3	9
2.4.2	Slot 4	10
2.4.3	Slot 5	11
2.4.4	Slot 6	12
2.4.5	Slot 7	13
2.5	FID Slots	14
2.5.1	Slot 0	14
2.5.2	Slot 1	15
2.5.3	Slot 2	16
A	Summary	17
A.1	Status	17
A.2	Comments	17

1 Front

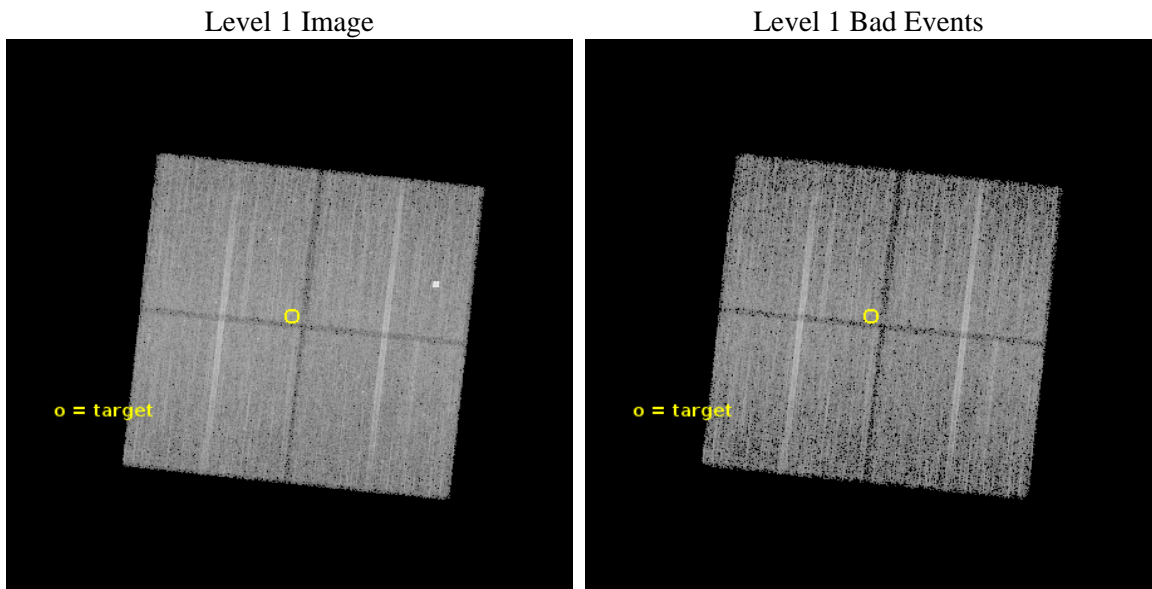
seq_num	901114	Sequence number
obs_id	16174	Observation id
title	The Sgr C complex: a cosmic ray dominated region?	Proposal title
observer	Dr Simona Soldi	Principal investigator
object	Sgr C	Source name
dtcycle	0	
cycle	P	events from which exps? Prim/Second/Both
ra_targ	266.099167	Observer's specified target RA [deg]
dec_targ	-29.399694	Observer's specified target Dec [deg]
ra_nom	266.10293248896	Nominal RA [deg]
dec_nom	-29.40719649097	Nominal Dec [deg]
roll_nom	276.21053727171	Nominal Roll [deg]
revision	1	Processing version of data
ontime	30493.891633868	Sum of GTIs [s]
livetime	30095.466490395	Livetime [s]
ontime0	30493.768513858	Sum of GTIs [s]
ontime1	30490.668513536	Sum of GTIs [s]
ontime2	30493.850593865	Sum of GTIs [s]
ontime3	30493.891633868	Sum of GTIs [s]
l2events	88782	Number of level 2 events



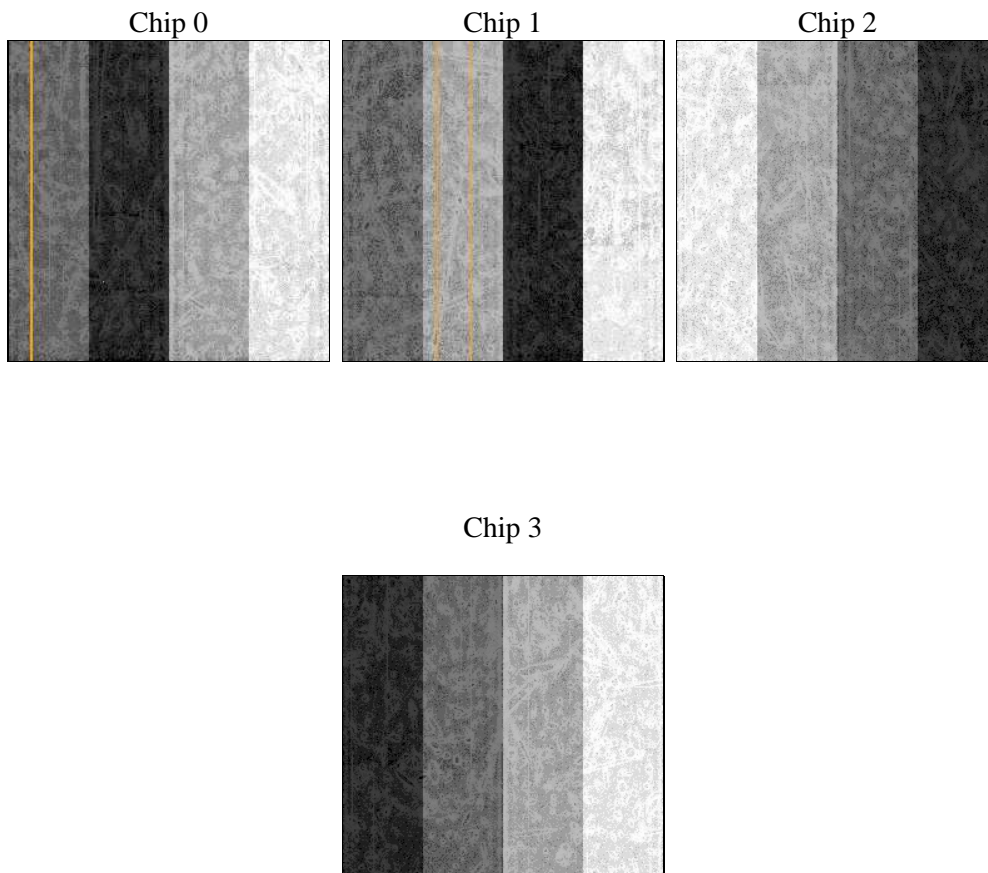
2 OBI

2.1 OBI

2.1.1 Images



2.1.2 Bias



2.1.3 Parameters

obi_num	1	Obi number	sched_exp_time	30404.000000	[s] Scheduled observation exposure time
ascdsver	10.2.4	Processing system revision	ontime	30493.891633868	Sum of GTIs [s]
caldsver	4.6.2	 	ontime0	30493.768513858	Sum of GTIs [s]
date	2014-07-30T04:03:16	Date and time of file creation	ontime1	30490.668513536	Sum of GTIs [s]
revision	1	Processing version of data	ontime2	30493.850593865	Sum of GTIs [s]
			ontime3	30493.891633868	Sum of GTIs [s]
			l1events	594625	Number of level 1 events

2.1.4 Events

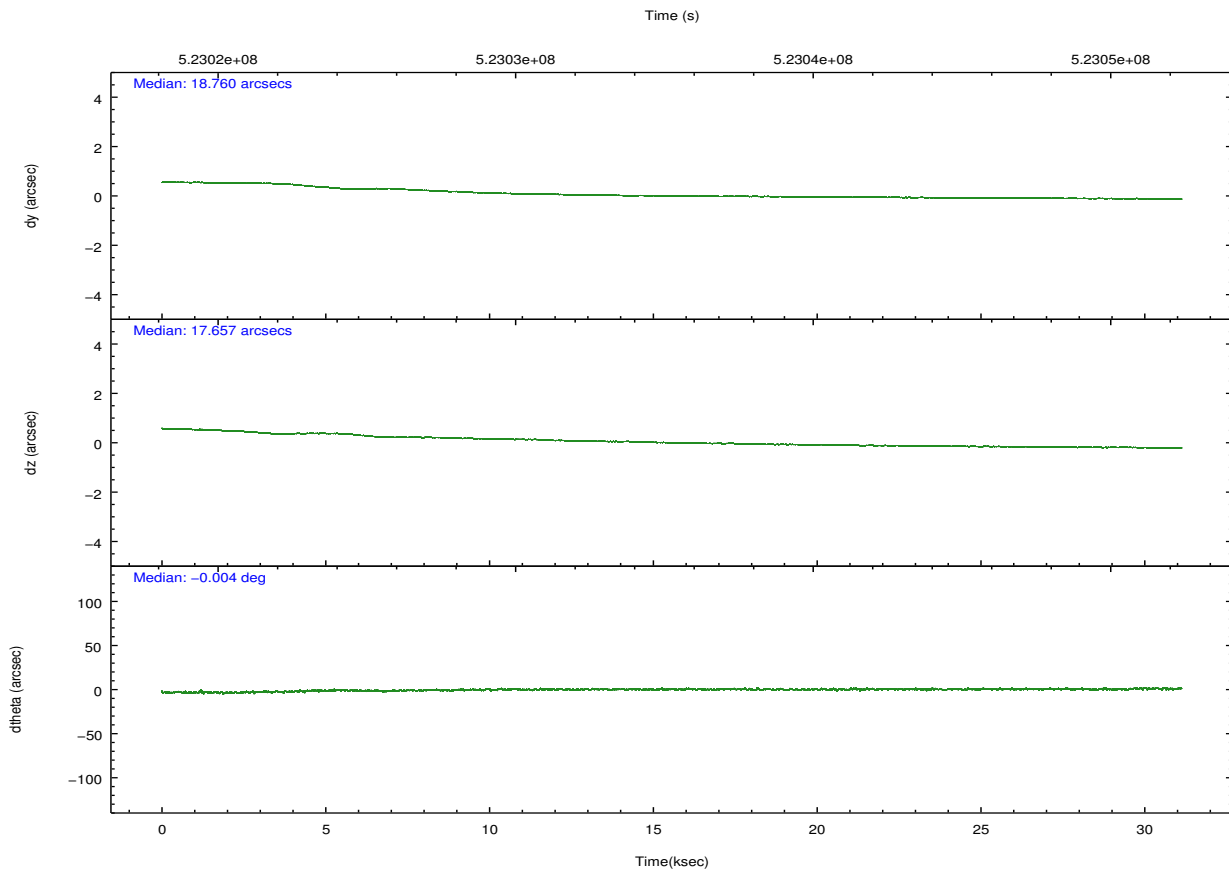
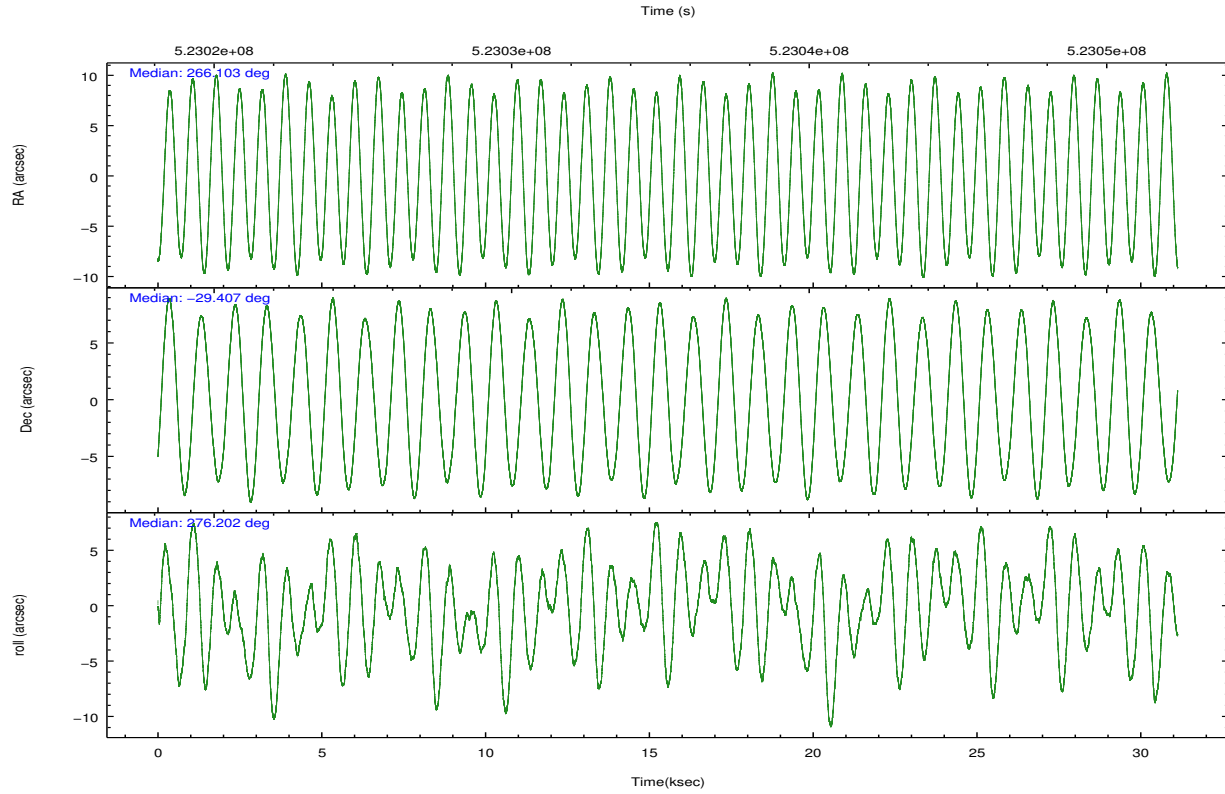
	ccd 0	ccd 1	ccd 2	ccd 3
level 1 events	137393	153450	153423	150359
rejected events	113202	123419	126346	125219
rejected %	82%	80%	82%	83%

	ccd 0	ccd 1	ccd 2	ccd 3
grade 0 events	10387	15374	12795	11270
	7%	10%	8%	7%
grade 1 events	90	101	107	135
	0%	0%	0%	0%
grade 2 events	5250	5614	5490	4963
	3%	3%	3%	3%
grade 3 events	2224	2106	2329	2238
	1%	1%	1%	1%
grade 4 events	2067	2189	2221	2270
	1%	1%	1%	1%
grade 5 events	7334	7565	6729	8072
	5%	4%	4%	5%
grade 6 events	4267	4755	4248	4400
	3%	3%	2%	2%
grade 7 events	105774	115746	119504	117011
	76%	75%	77%	77%

2.2 Compared Parameters

Parameter	Planned	Actual	Parameter	Planned	Actual
Instrument	ACIS	ACIS	Obspar format version number	7	7
Detector	ACIS-0123	ACIS-0123	Obspar file type	PREDICTED	ACTUAL
Grating	NONE	NONE	Obspar update status	NONE	UPDATED
Data mode	FAINT	FAINT	Number of optional ACIS chips dropped	0	0
Observation mode	POINTING	POINTING	On-chip summing requested	N	N
[deg] Pointing RA	266.084120	266.1029324889578	Subarray requested	NONE	NONE
[deg] Pointing Dec	-29.384980	-29.40719649097012	Alternating exposures requested	N	N
[deg] Pointing Roll	275.992618	276.2105372717077	[s] Primary exposure time	0.000000	3.1
[mm] SIM focus pos	-0.782348	-0.7809083437167272			
[mm] SIM defocus	0	0.001439871863259334			
[mm] SIM translation stage pos	-233.592463	-233.5874344608287			
[mm] SIM translation stage offset	0	-0.005018542100998502			
[s] Observation start time (MET)	523020403.184000	523019224.84234			
Observation start date	2014-07-29T11:25:36	2014-07-29T11:07:04			
[s] Observation end time (MET)	523050807.184000	523052017.66924			
Observation end date	2014-07-29T19:52:20	2014-07-29T20:13:37			
Read mode	TIMED	TIMED			

2.3 Aspect

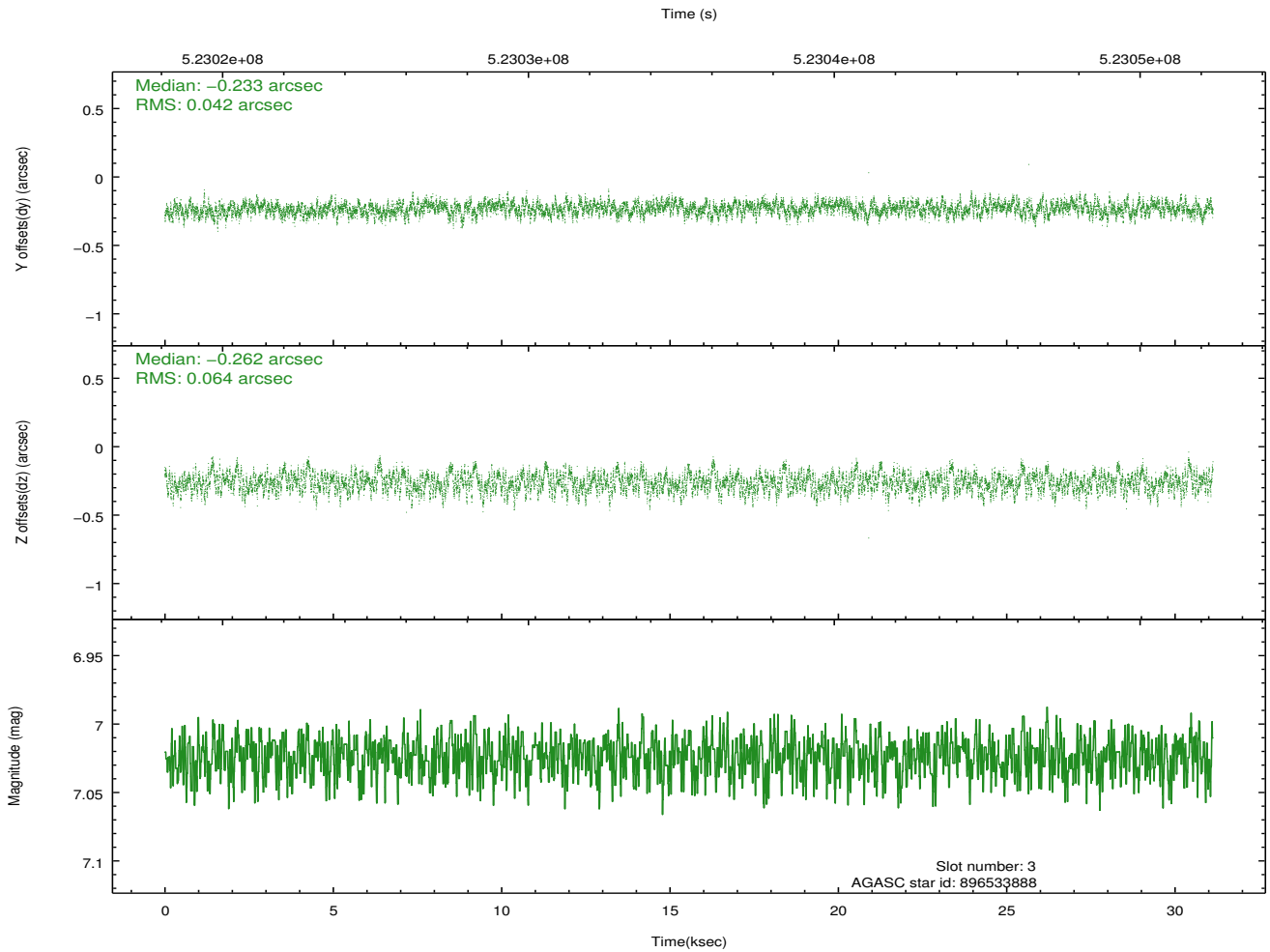
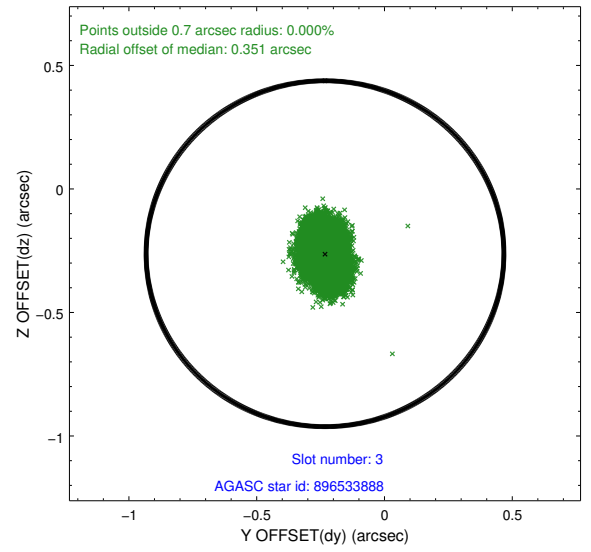
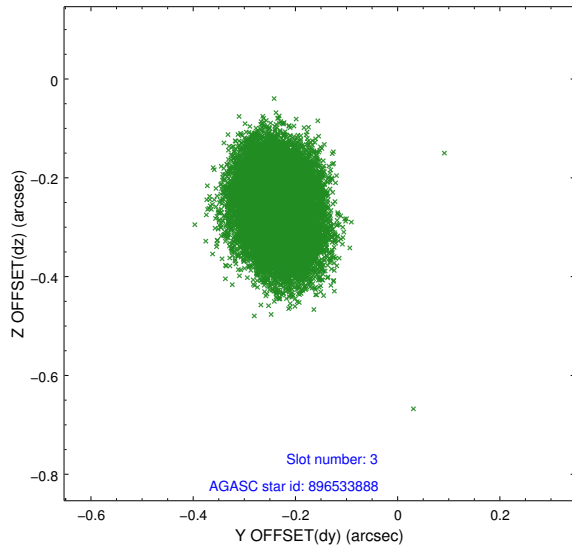


Slot Statistics

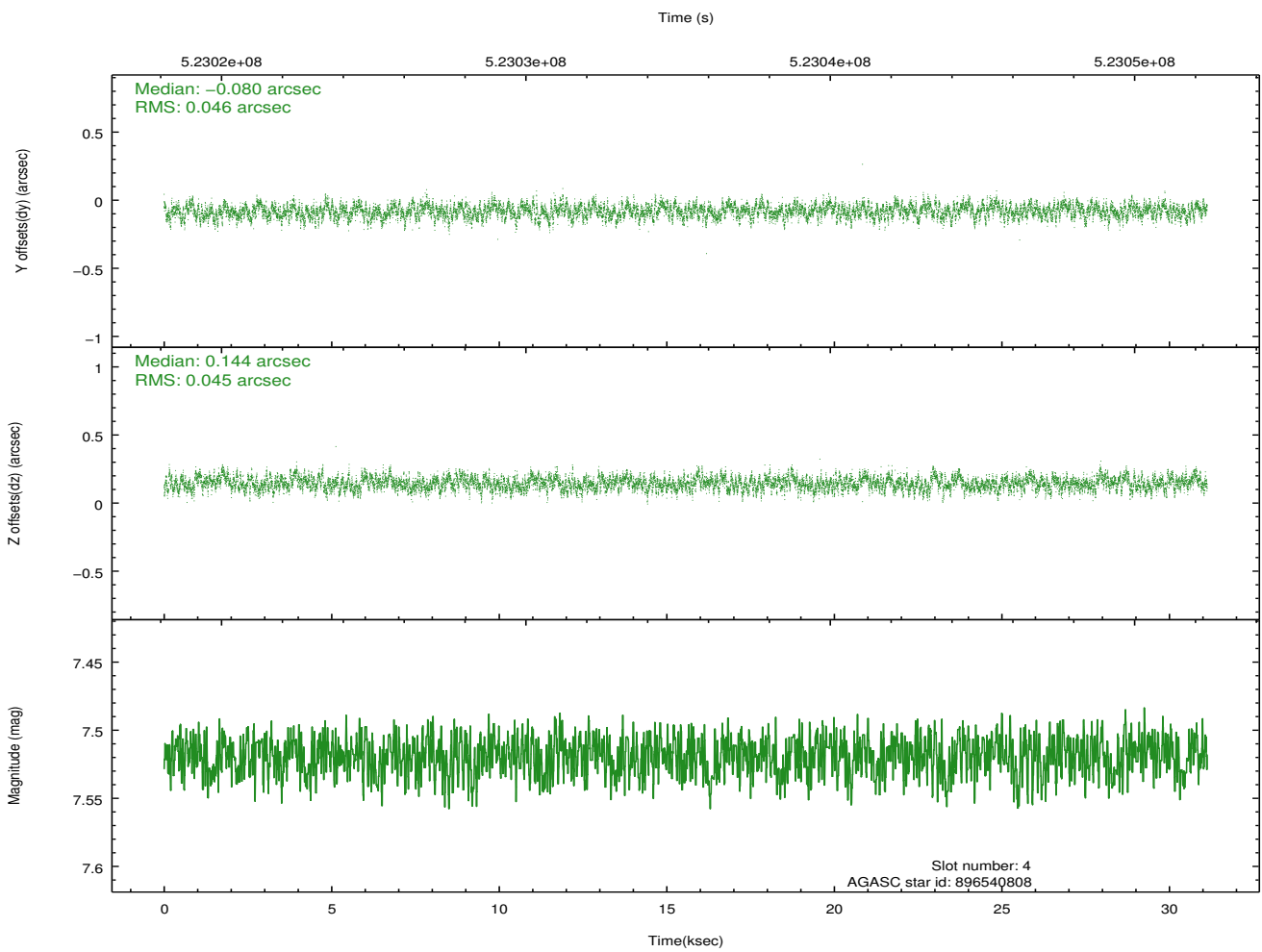
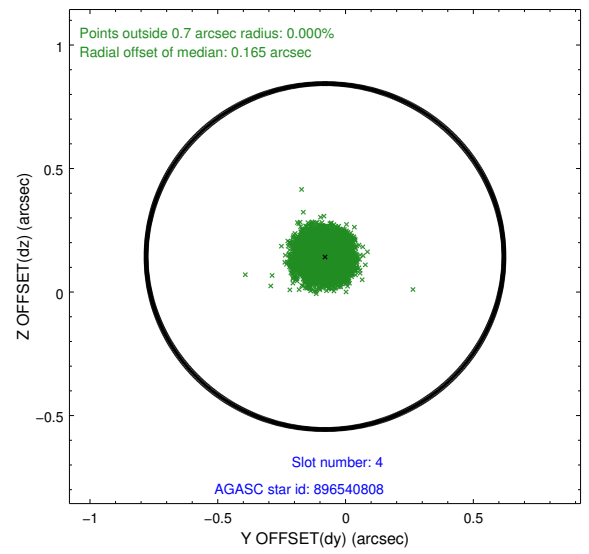
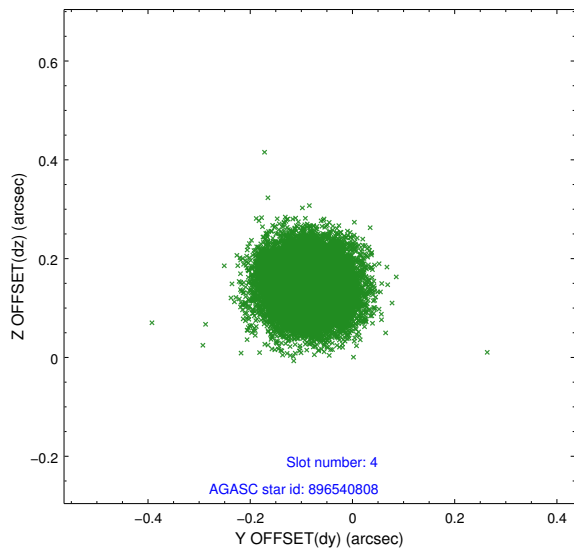
slot	status	id	mag	n_pts	med_dy	med_dz	dr1	dr2	ra	dec	mean_y	mean_z
0	FID	ACIS-I-1	7.07	7593	-0.035	-0.060	0.013	0.026	0.000000	0.000000	920.50	-841.41
1	FID	ACIS-I-4	7.00	7593	0.263	0.083	0.011	0.023	0.000000	0.000000	2140.81	1058.54
2	FID	ACIS-I-5	7.06	7593	-0.326	0.048	0.008	0.014	0.000000	0.000000	-1827.78	1056.29
3	GUIDE	896533888	7.02	15185	-0.233	-0.262	0.080	0.132	266.666434	-29.392757	222.87	1813.07
4	GUIDE	896540808	7.52	15183	-0.080	0.144	0.069	0.109	265.985401	-29.308604	-305.41	-279.09
5	GUIDE	896404784	9.30	15171	-0.043	0.163	0.181	0.281	265.491289	-29.092670	-1235.60	-1745.62
6	GUIDE	896532952	8.99	15169	-0.063	0.237	0.088	0.143	266.383644	-28.787617	-2038.77	1164.45
7	GUIDE	966791536	9.31	15168	0.420	-0.281	0.201	0.314	265.423122	-30.013043	2040.37	-2285.74

2.4 Star Slots

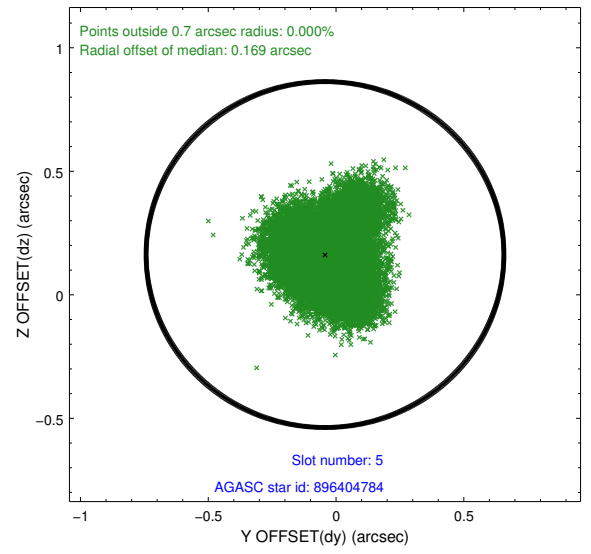
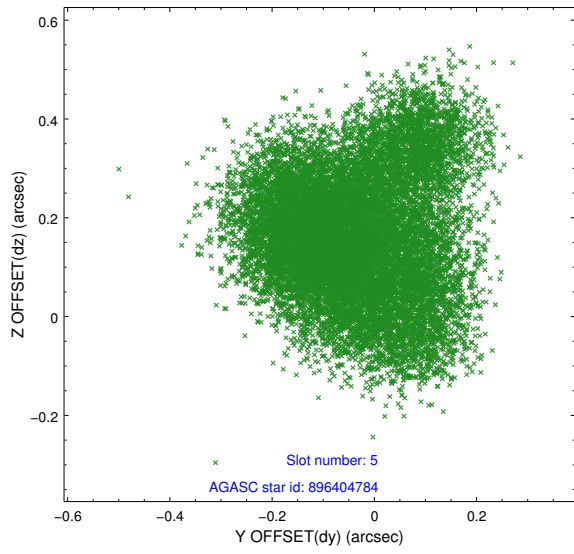
2.4.1 Slot 3



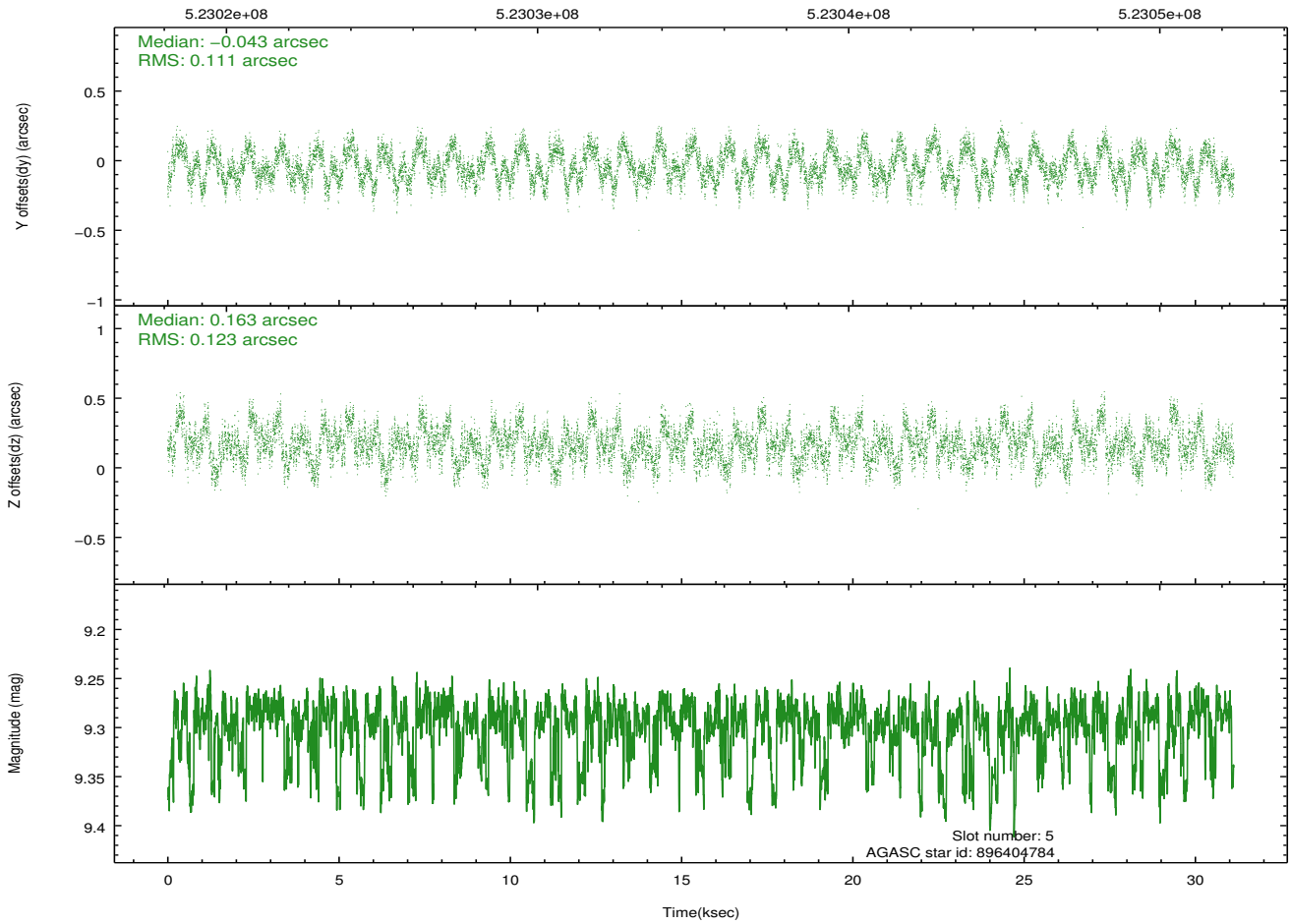
2.4.2 Slot 4



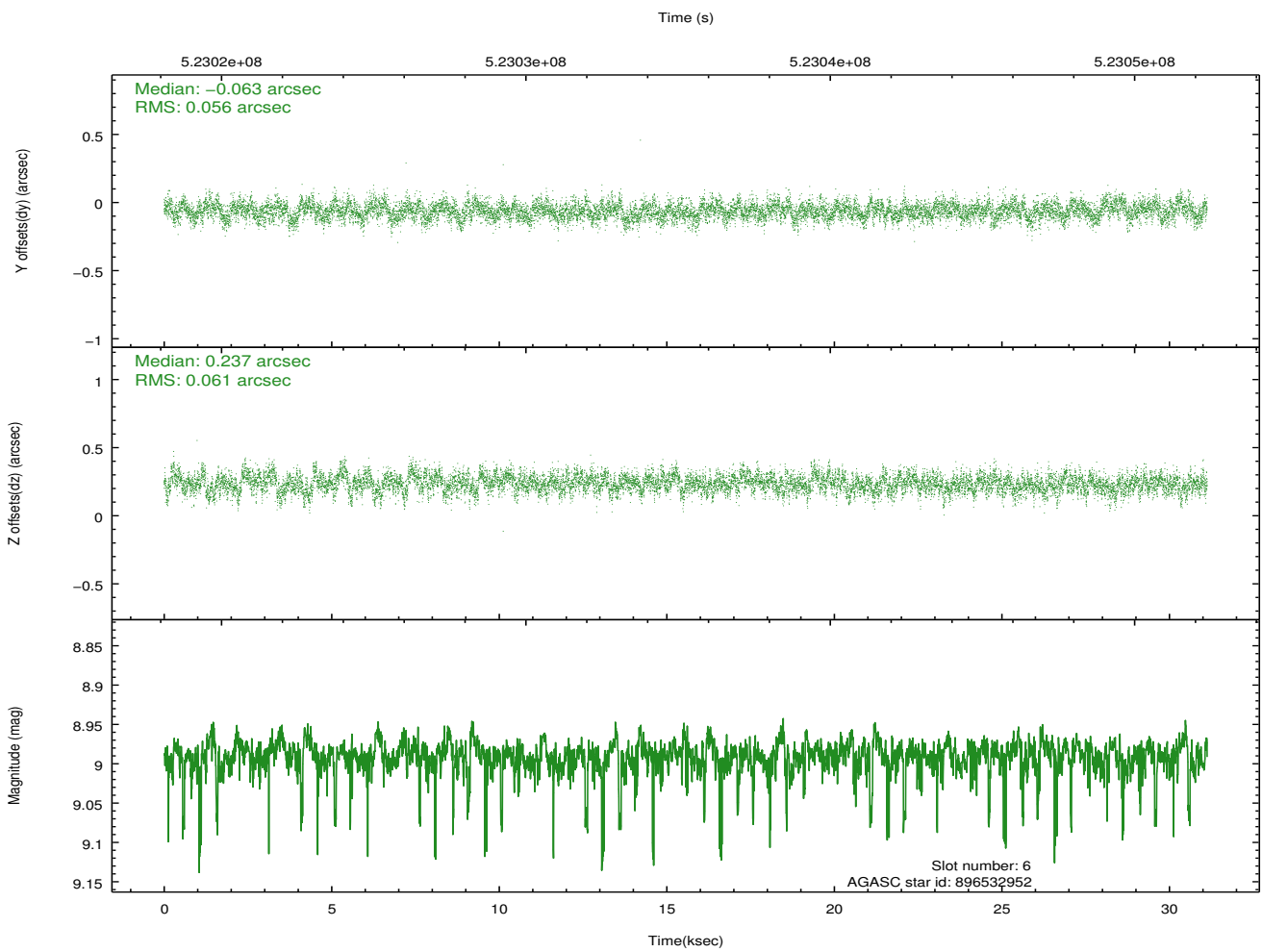
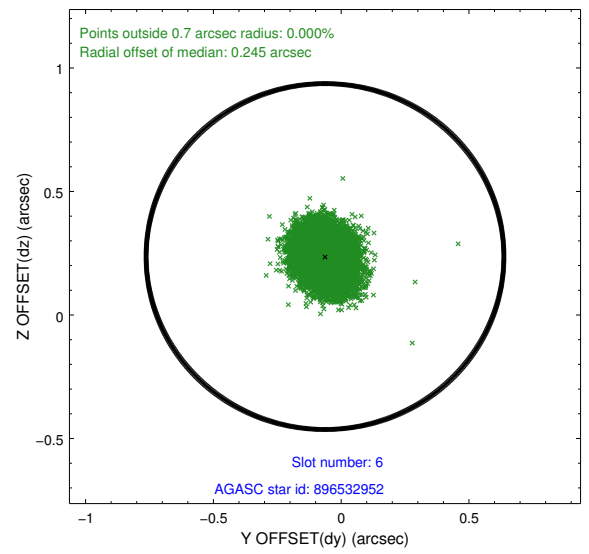
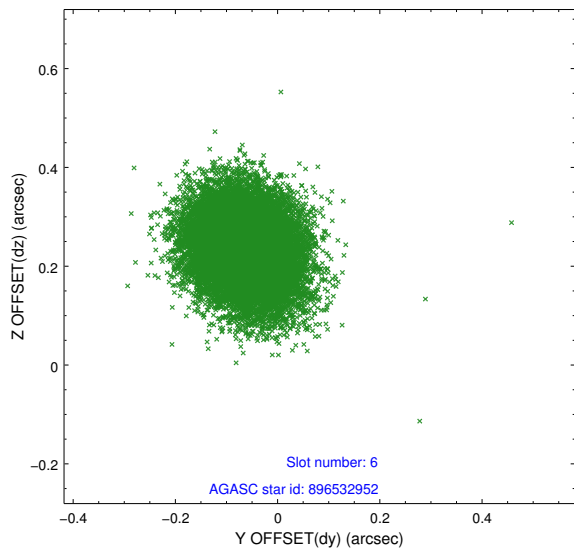
2.4.3 Slot 5



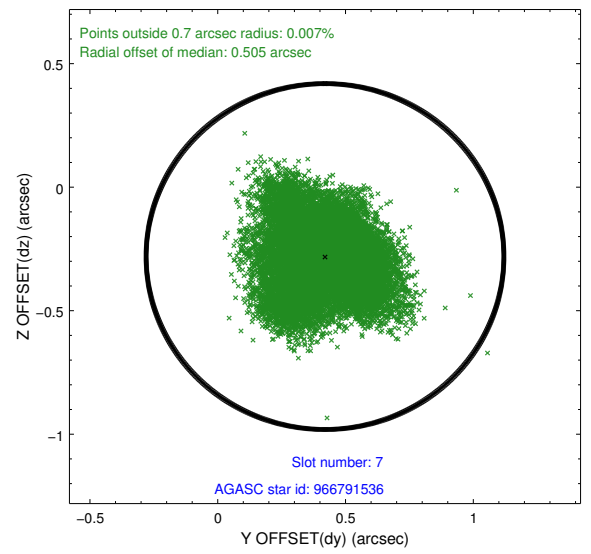
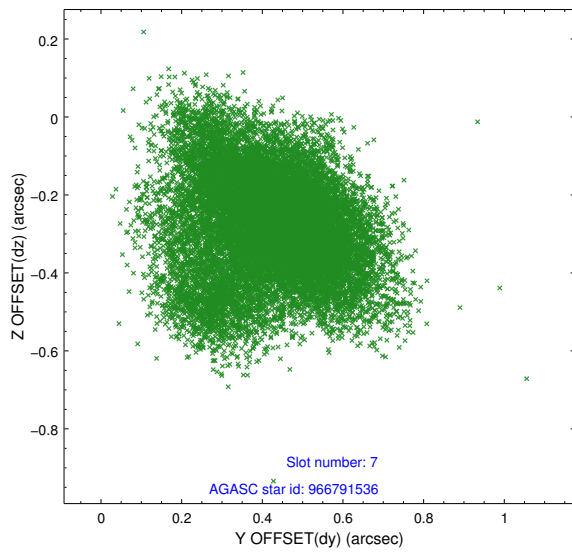
Time (s)



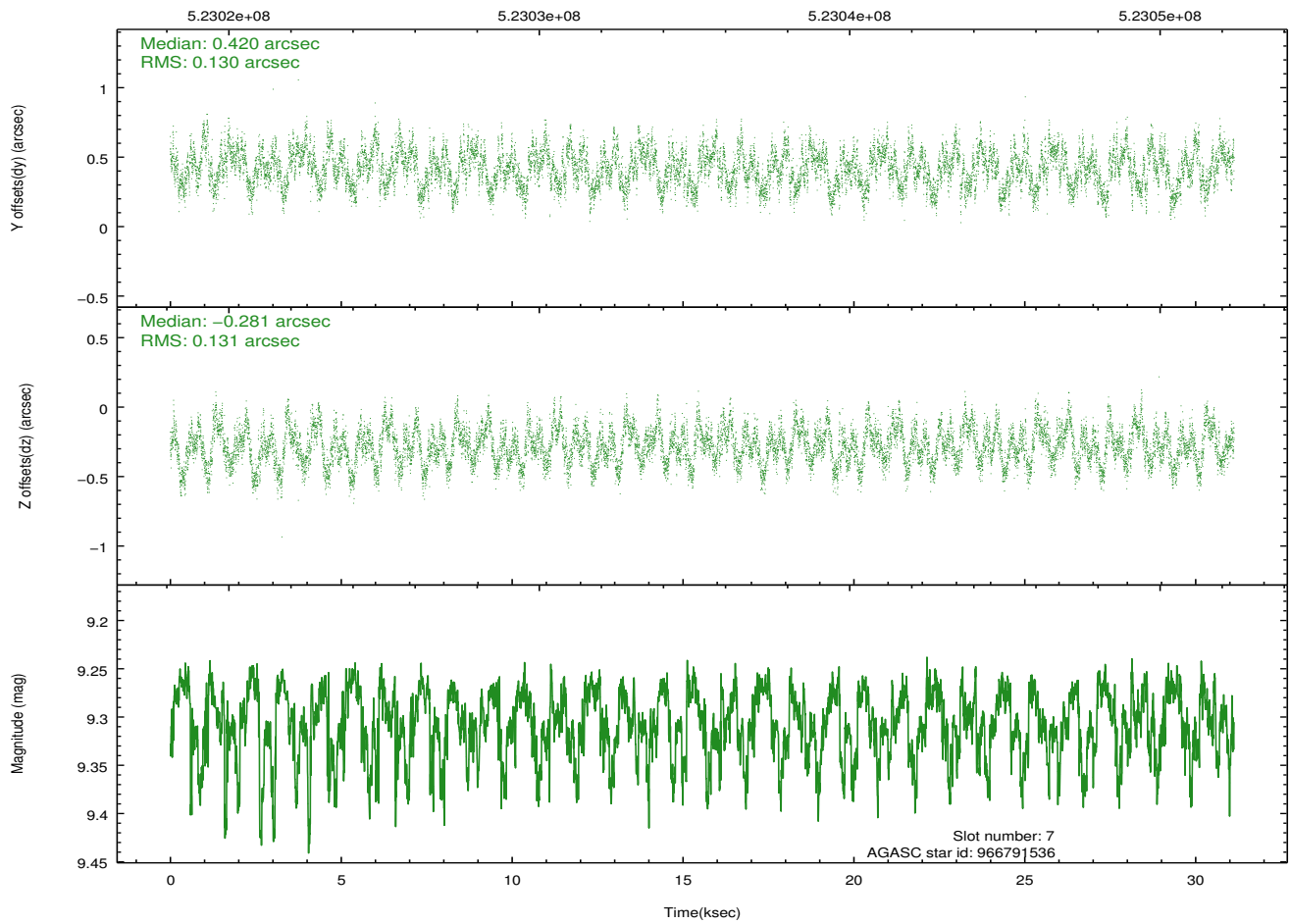
2.4.4 Slot 6



2.4.5 Slot 7

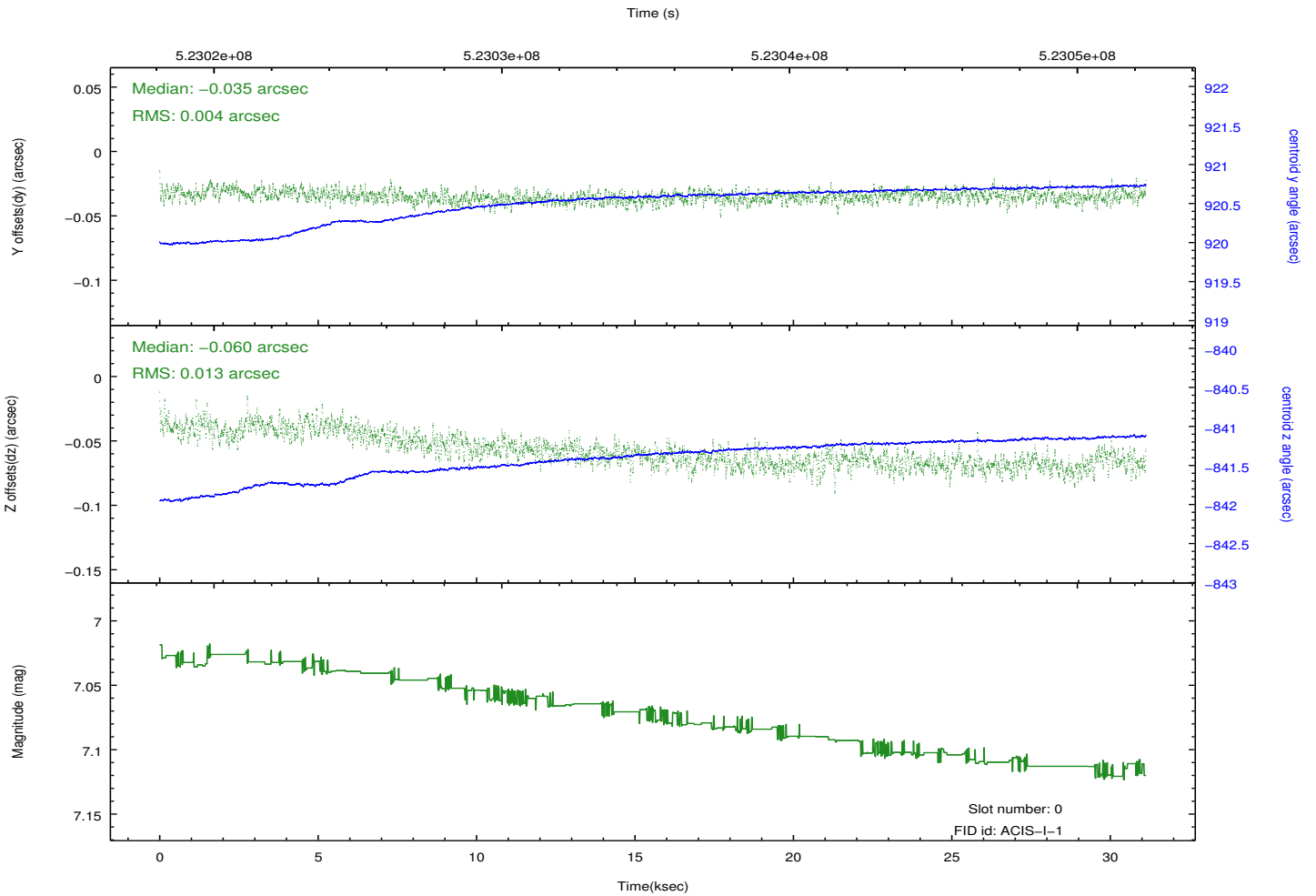
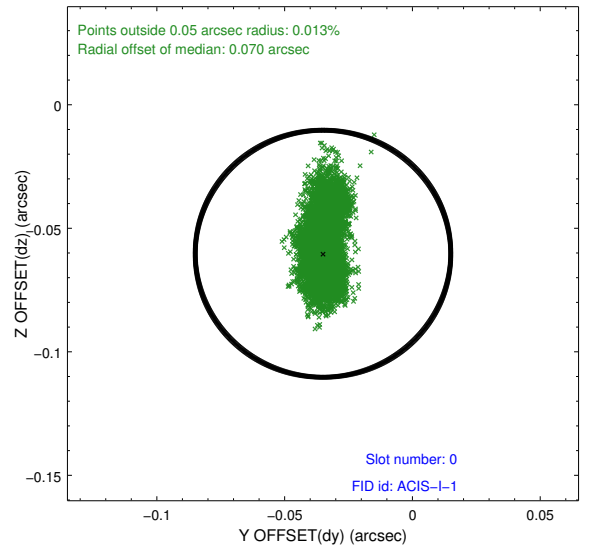
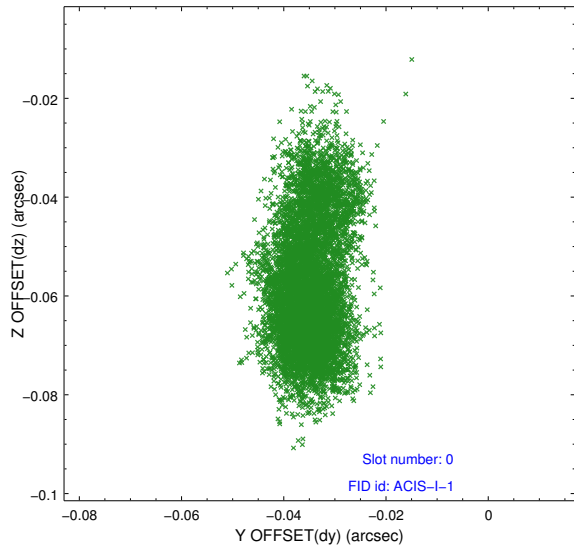


Time (s)

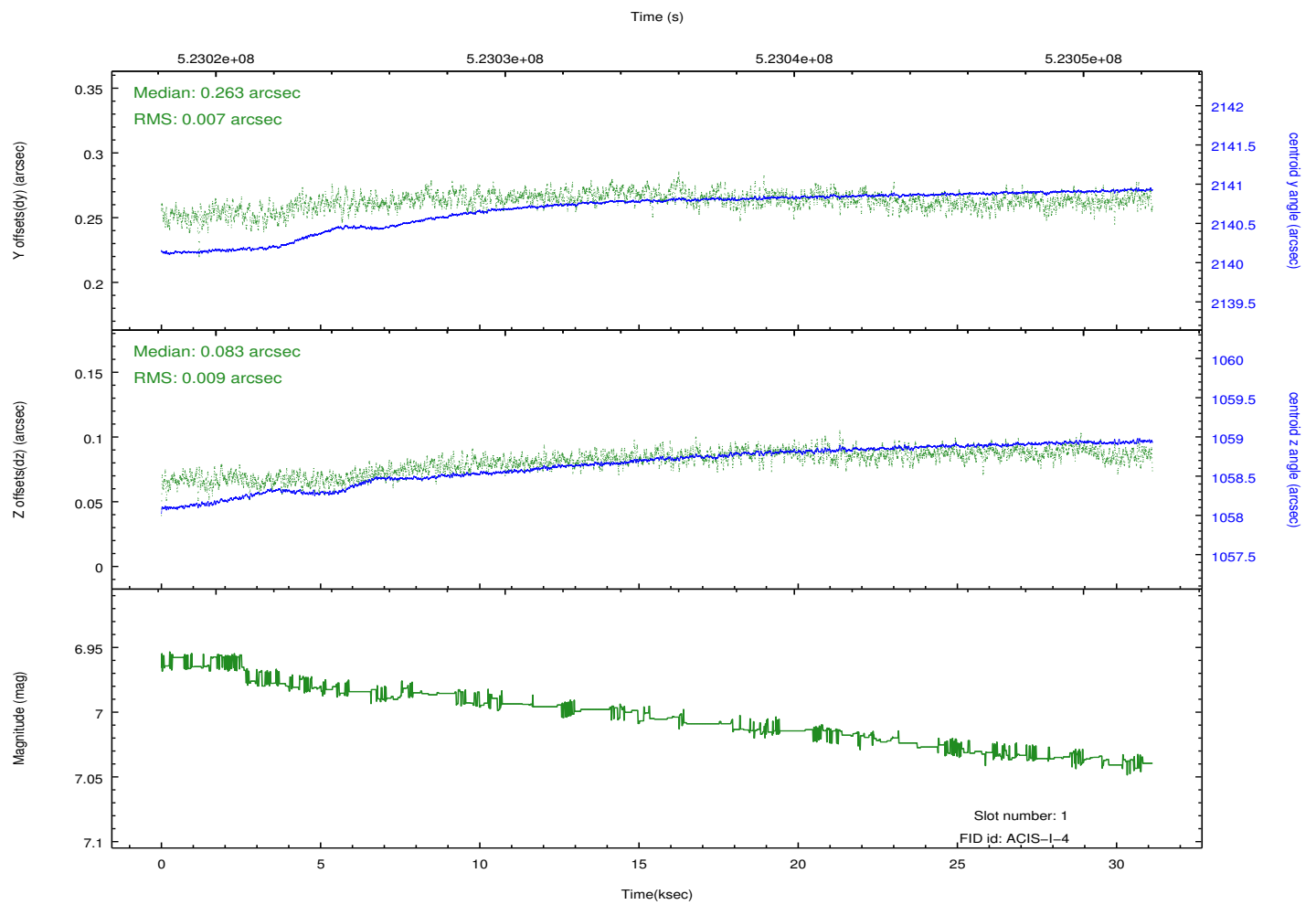
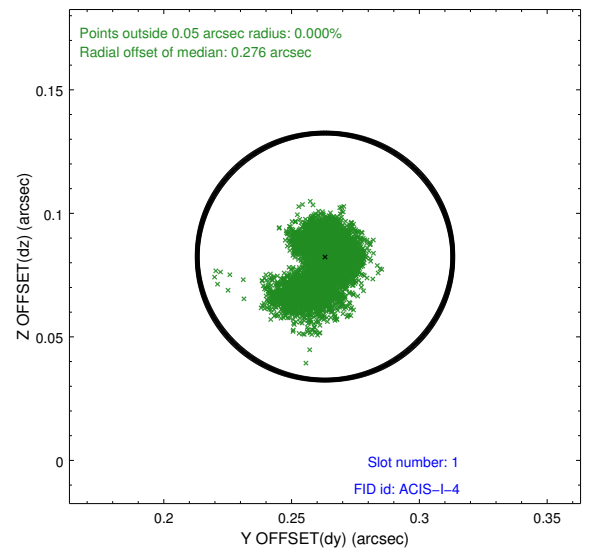
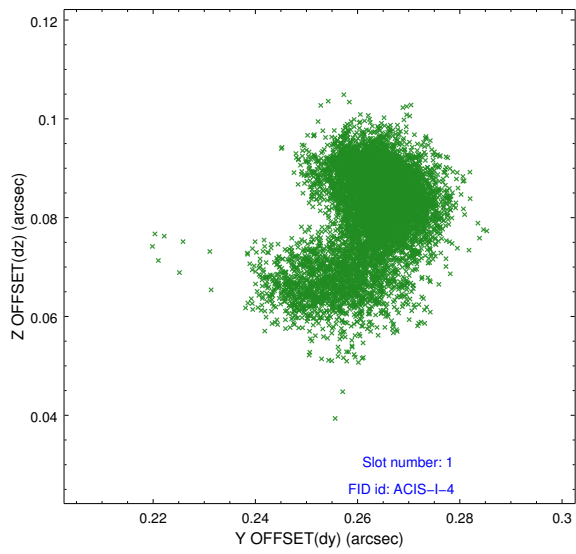


2.5 FID Slots

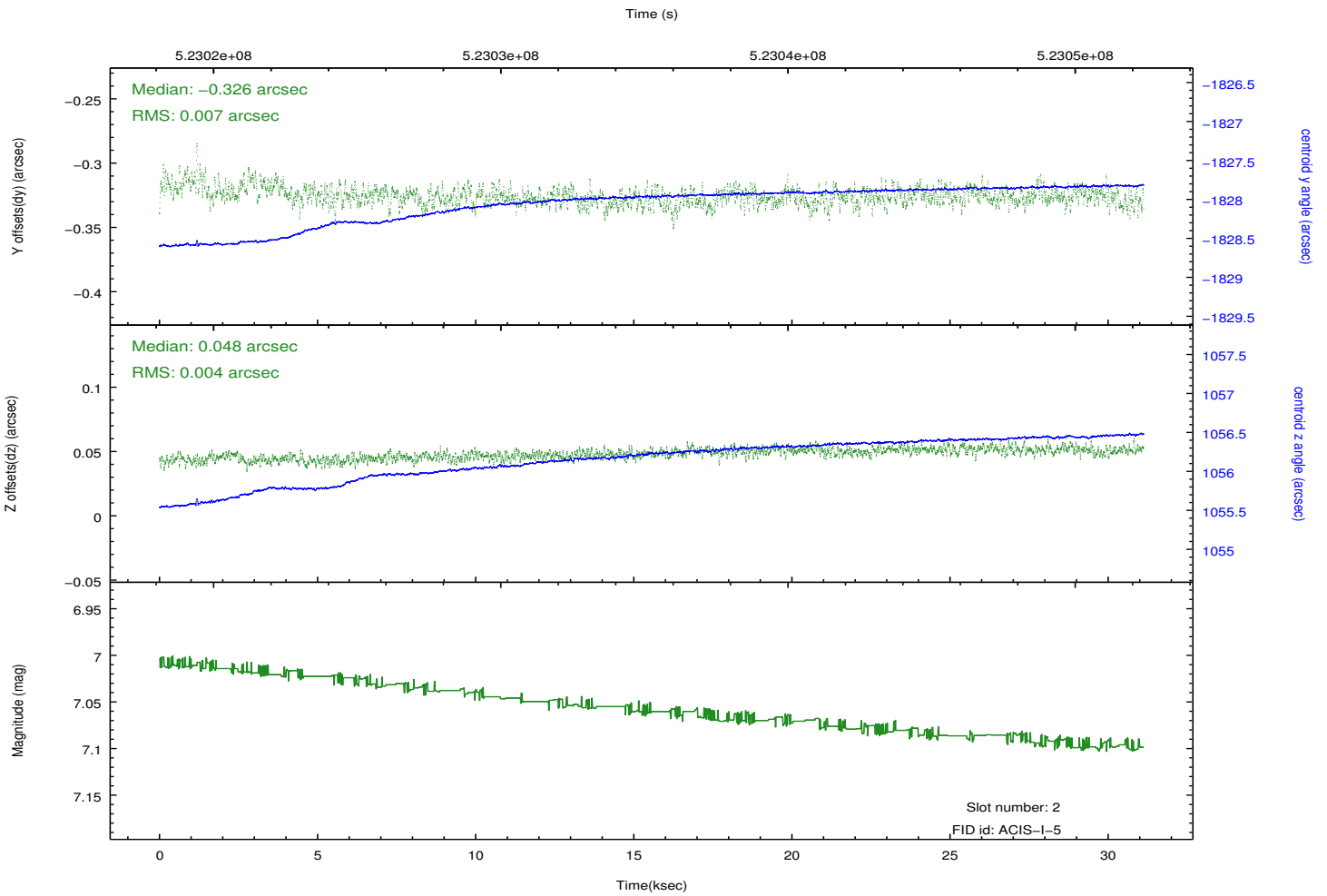
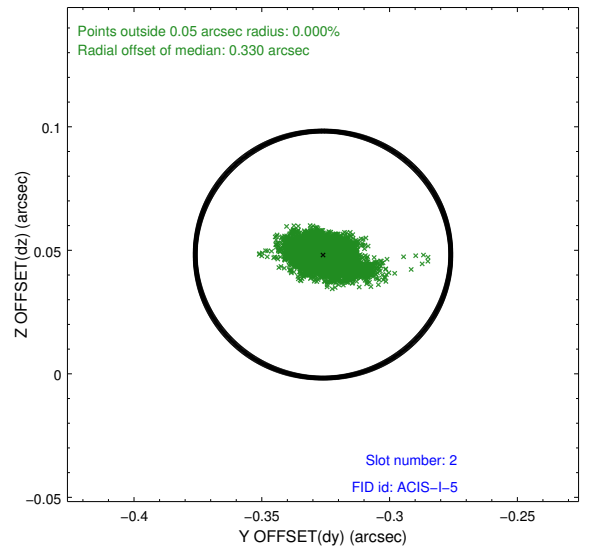
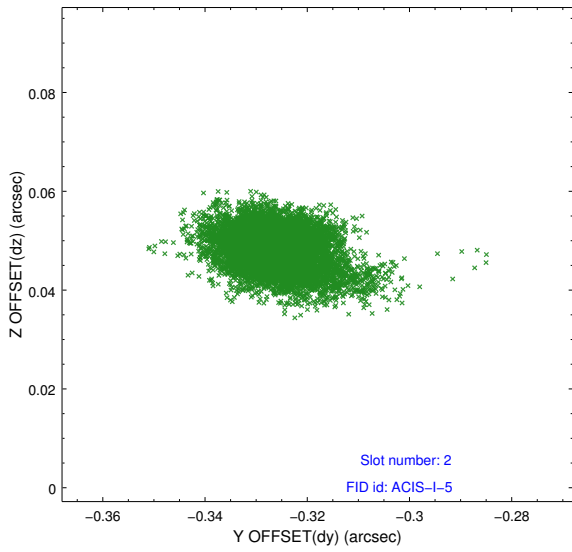
2.5.1 Slot 0



2.5.2 Slot 1



2.5.3 Slot 2



A Summary

A.1 Status

V&V Scientist	Joy Nichols
V&V Date (YYYY-MM-DD)	2014.07.30
V&V Edition	1
V&V Disposition and Status	OK
V&V Charge Time	30.493891633868

A.2 Comments