

V&V Reference Report

L2 ASCDS Version : 8.4.5

Observation 1654 - L2 Version 3
Chandra X-Ray Center

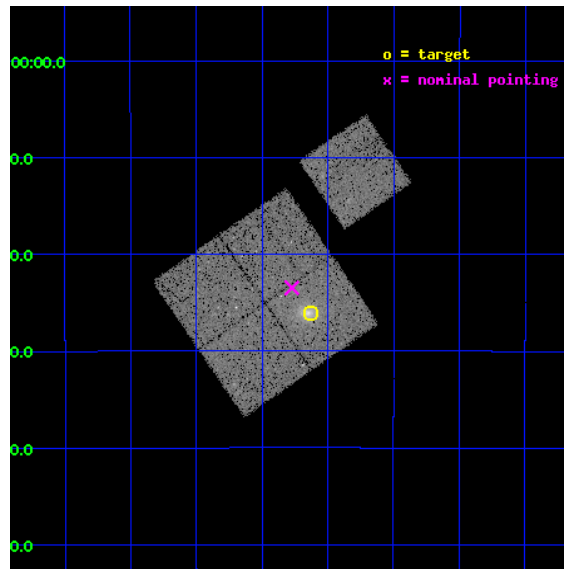
L2 Processing Date : Sep 5 2012

Contents

1	Front	2
2	OBI	3
2.1	OBI	3
2.1.1	Images	3
2.1.2	Bias	3
2.1.3	Parameters	4
2.1.4	Events	4
2.2	Compared Parameters	5
2.3	Aspect	6
2.4	Star Slots	9
2.4.1	Slot 3	9
2.4.2	Slot 4	10
2.4.3	Slot 5	11
2.4.4	Slot 6	12
2.4.5	Slot 7	13
2.5	FID Slots	14
2.5.1	Slot 0	14
2.5.2	Slot 1	15
2.5.3	Slot 2	16
A	Summary	17
A.1	Status	17
A.2	Comments	17

1 Front

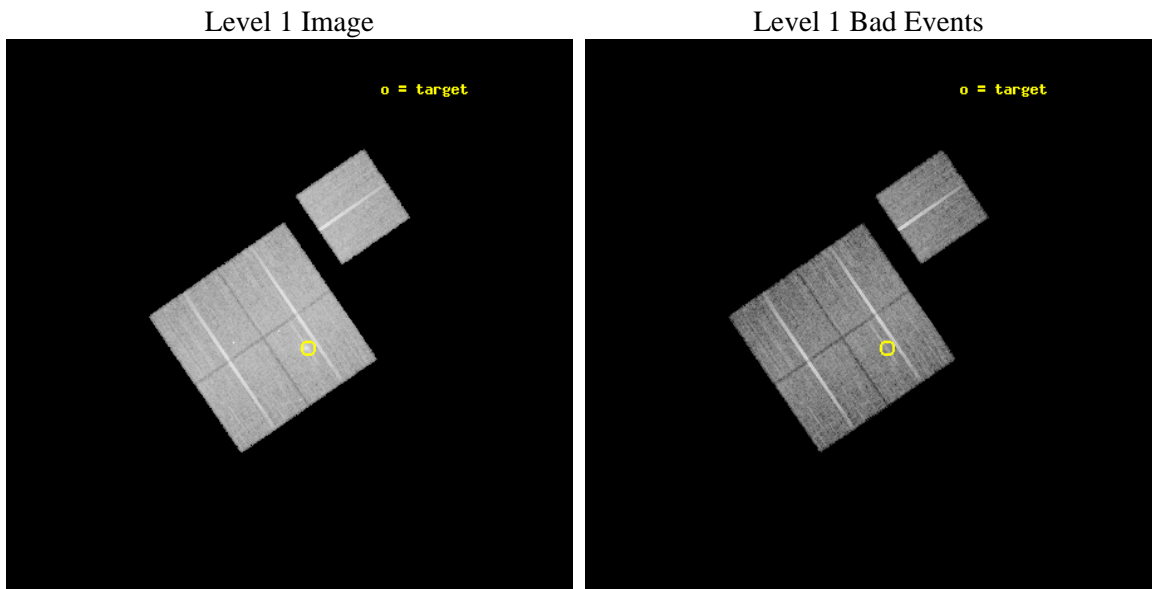
seq_num	800122	Sequence number
obs_id	1654	Observation id
title	DETERMINATION OF H0 AND Q0, 2000 PART 2	Proposal title
observer	DR. LEON VANSPEYBROECK	Principal investigator
object	MACS J0257.1-2325	Source name
dtycycle	0	
cycle	P	events from which exps? Prim/Second/Both
ra_targ	44.282917	Observer's specified target RA [deg]
dec_targ	-23.435	Observer's specified target Dec [deg]
ra_nom	44.318361895385	Nominal RA [deg]
dec_nom	-23.39129425996	Nominal Dec [deg]
roll_nom	55.534003119298	Nominal Roll [deg]
revision	3	Processing version of data
ontime	20109.574822485	Sum of GTIs [s]
livetime	19846.828422976	Livetime [s]
ontime0	20109.45170249	Sum of GTIs [s]
ontime1	20106.351752311	Sum of GTIs [s]
ontime2	20109.533782482	Sum of GTIs [s]
ontime3	20109.574822485	Sum of GTIs [s]
ontime6	20109.410662487	Sum of GTIs [s]
l2events	65406	Number of level 2 events



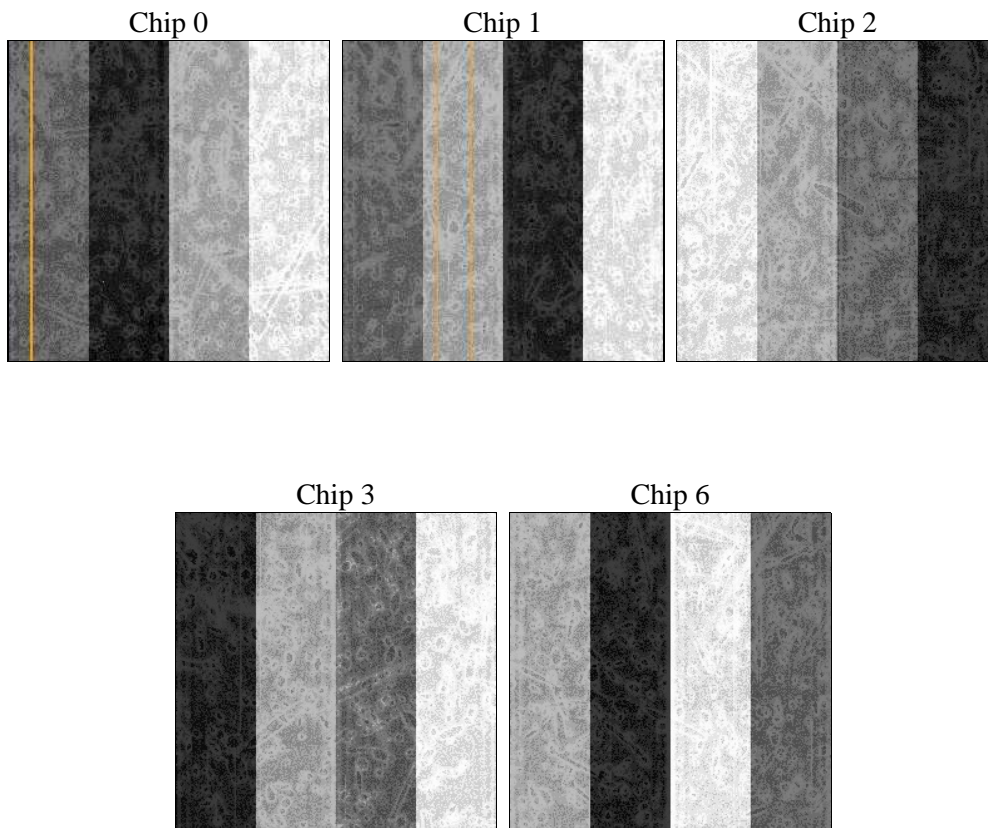
2 OBI

2.1 OBI

2.1.1 Images



2.1.2 Bias



2.1.3 Parameters

obi_num	0	Obi number	sched_exp_time	20000.000000	[s] Scheduled observation exposure time
ascdsver	8.4.5	Processing system revision	ontime	20109.574822485	Sum of GTIs [s]
caldbver	4.5.1.1	 	ontime0	20109.45170249	Sum of GTIs [s]
date	2012-09-05T15:09:31	Date and time of file creation	ontime1	20106.351752311	Sum of GTIs [s]
revision	3	Processing version of data	ontime2	20109.533782482	Sum of GTIs [s]
			ontime3	20109.574822485	Sum of GTIs [s]
			ontime6	20109.410662487	Sum of GTIs [s]
			l1events	612374	Number of level 1 events

2.1.4 Events

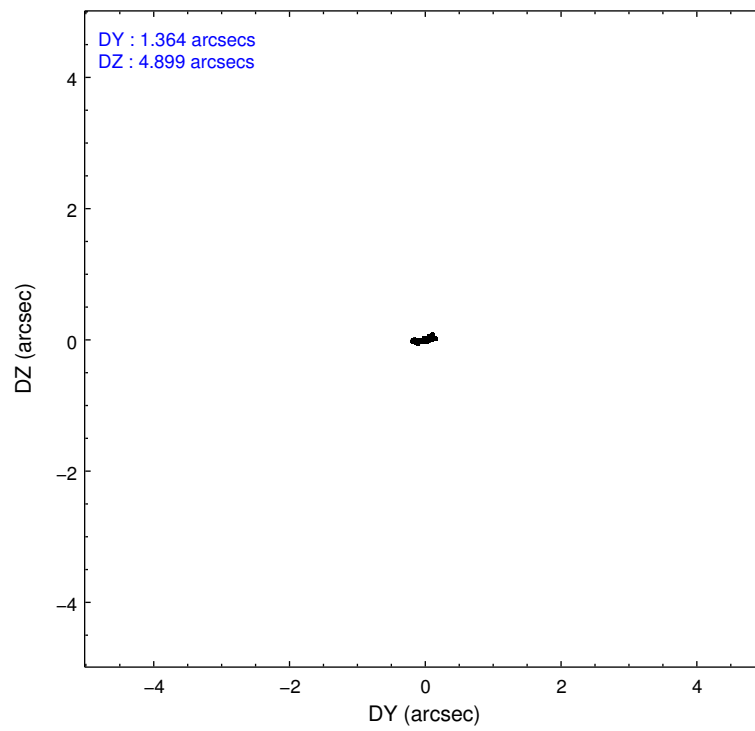
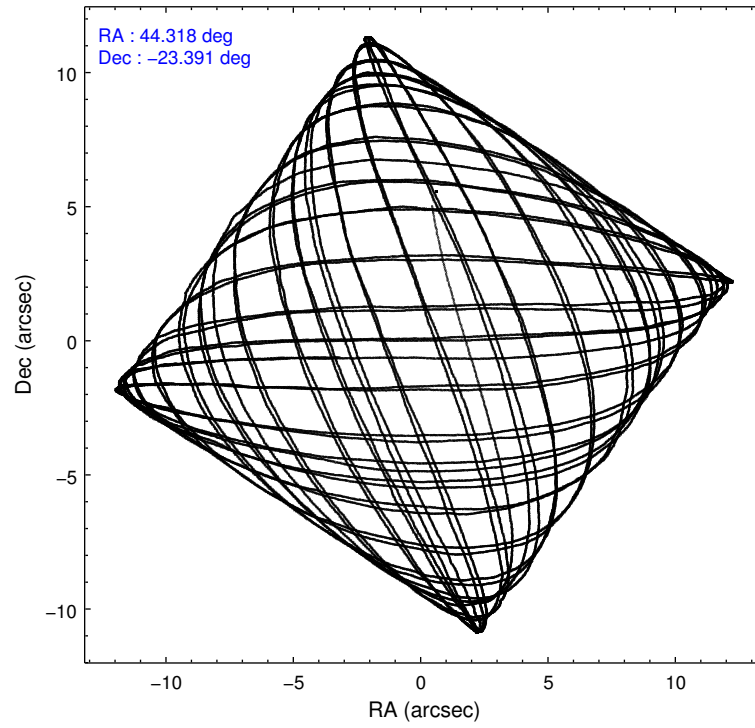
	ccd 0	ccd 1	ccd 2	ccd 3	ccd 6
level 1 events	114197	114574	126979	132407	124217
rejected events	99696	99613	113132	113337	110639
rejected %	87%	86%	89%	85%	89%

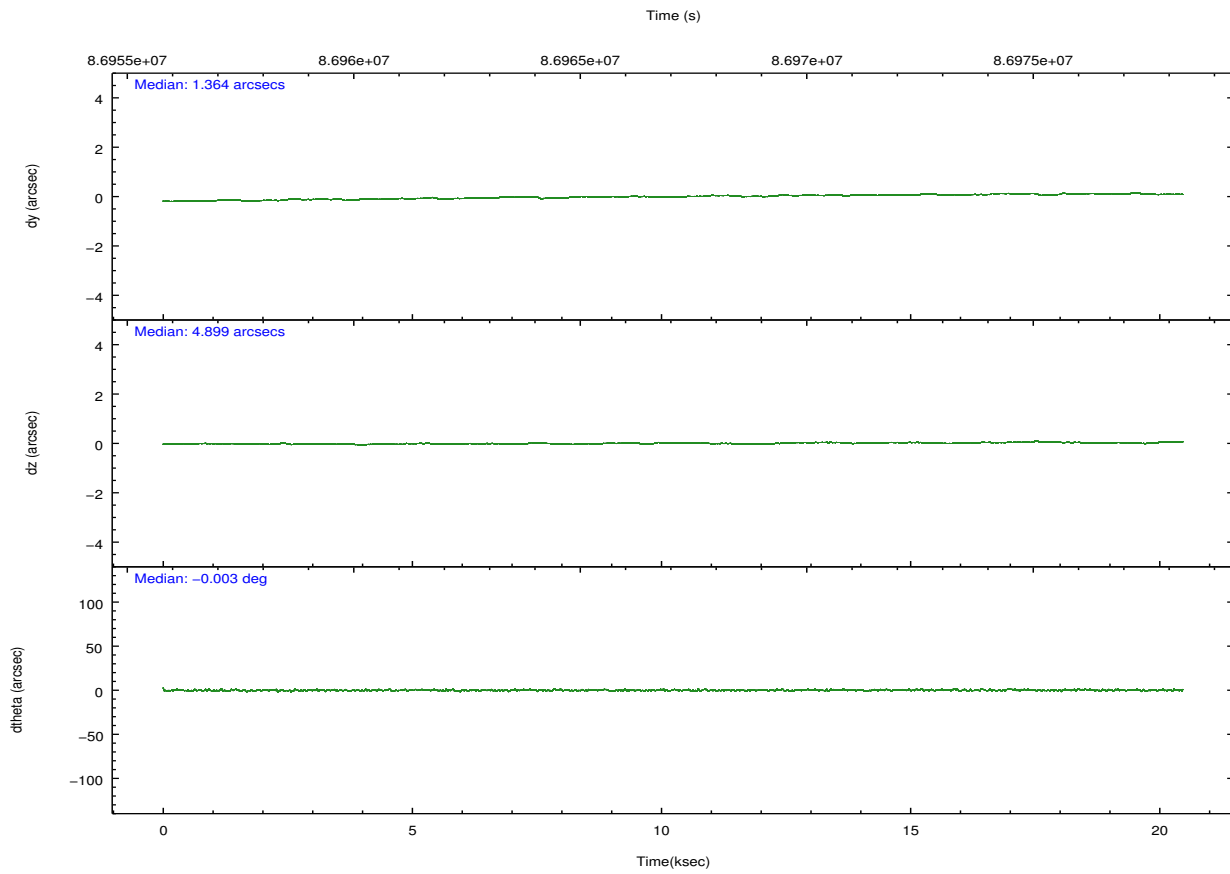
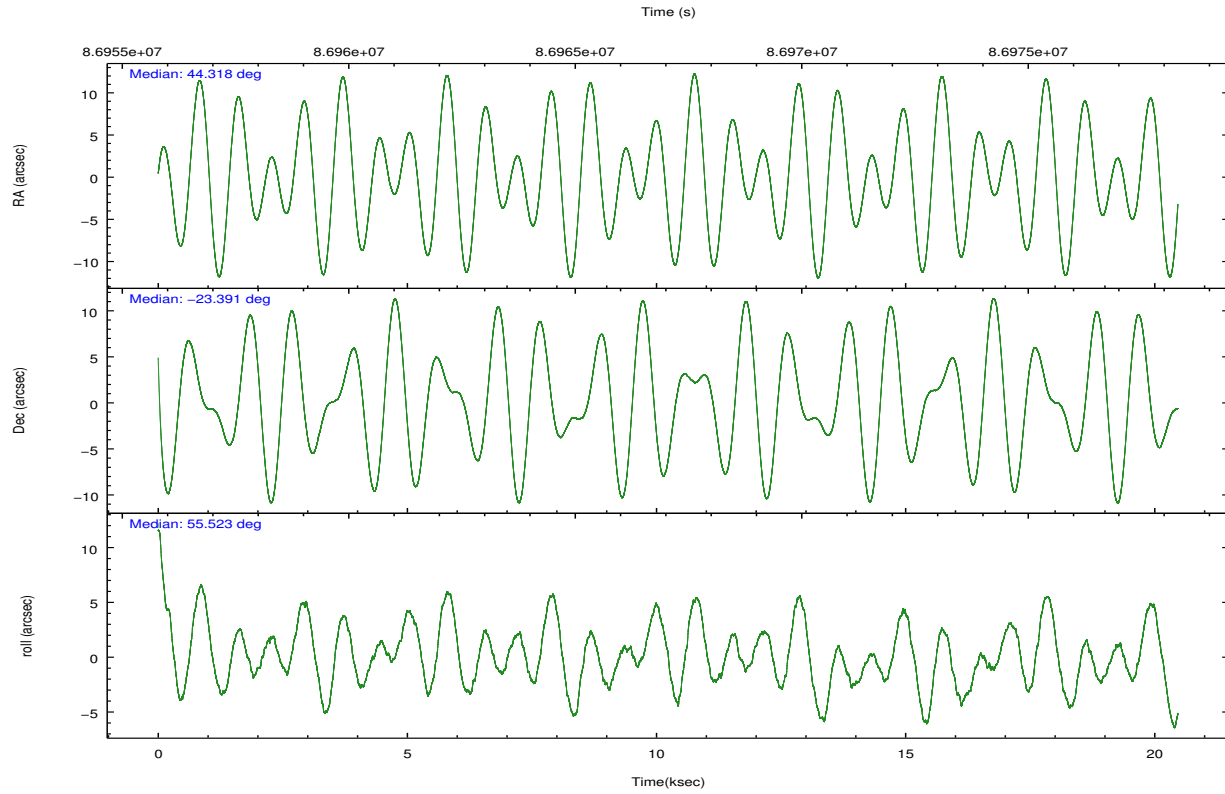
	ccd 0	ccd 1	ccd 2	ccd 3	ccd 6
grade 0 events	6431	6205	6030	10340	5519
	5%	5%	4%	7%	4%
grade 1 events	54	43	60	79	49
	0%	0%	0%	0%	0%
grade 2 events	2909	3016	2905	3114	2690
	2%	2%	2%	2%	2%
grade 3 events	1409	1474	1253	1507	1394
	1%	1%	0%	1%	1%
grade 4 events	1394	1585	1275	1557	1378
	1%	1%	1%	1%	1%
grade 5 events	4176	4552	4107	4719	4953
	3%	3%	3%	3%	3%
grade 6 events	2359	2688	2387	2557	2599
	2%	2%	1%	1%	2%
grade 7 events	95465	95011	108962	108534	105635
	83%	82%	85%	81%	85%

2.2 Compared Parameters

Parameter	Planned	Actual	Parameter	Planned	Actual
Instrument	ACIS	ACIS	Obspar format version number	7	7
Detector	ACIS-01236	ACIS-01236	Obspar file type	PREDICTED	ACTUAL
Grating	NONE	NONE	Obspar update status	NONE	UPDATED
Data mode	FAINT	FAINT	Number of optional ACIS chips dropped	0	0
Observation mode	POINTING	POINTING	On-chip summing requested	N	N
[deg] Pointing RA	44.315975	44.31836189538504	Subarray requested	NONE	NONE
[deg] Pointing Dec	-23.418702	-23.39129425996001	Alternating exposures requested	N	N
[deg] Pointing Roll	55.324370	55.53400311929793	[s] Primary exposure time	0.000000	3.1
[mm] SIM focus pos	-0.782348	-0.7809083437167272			
[mm] SIM defocus	0	0.001439871863259334			
[mm] SIM translation stage pos	-225.840463	-225.848371962627			
[mm] SIM translation stage offset	-7.752	-7.744081040302689			
[s] Observation start time (MET)	86957280.184000	86956176.257015			
Observation start date	2000-10-03T10:46:56	2000-10-03T10:29:36			
[s] Observation end time (MET)	86977280.184000	86978049.24534			
Observation end date	2000-10-03T16:20:16	2000-10-03T16:34:09			
Read mode	TIMED	TIMED			

2.3 Aspect



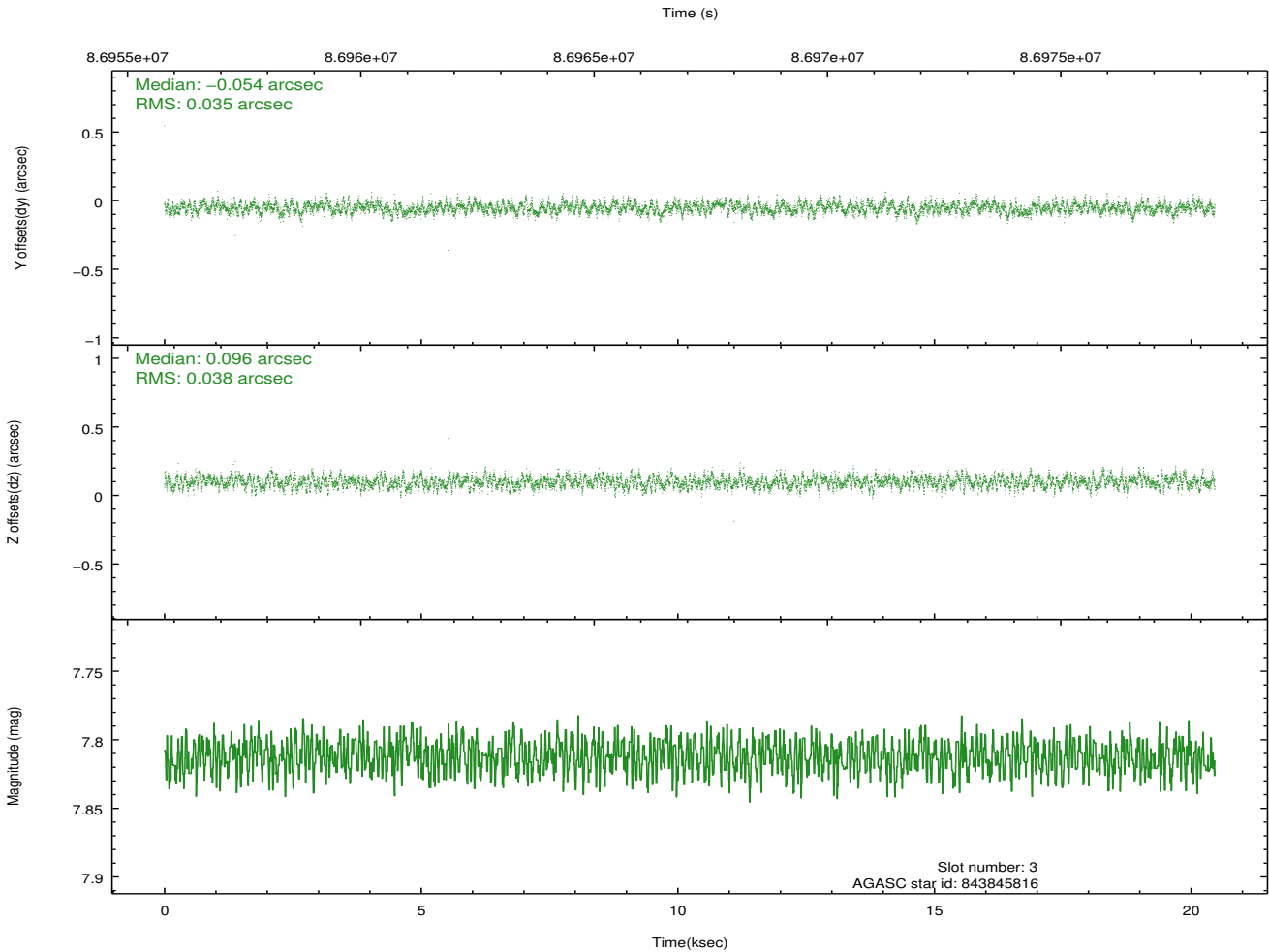
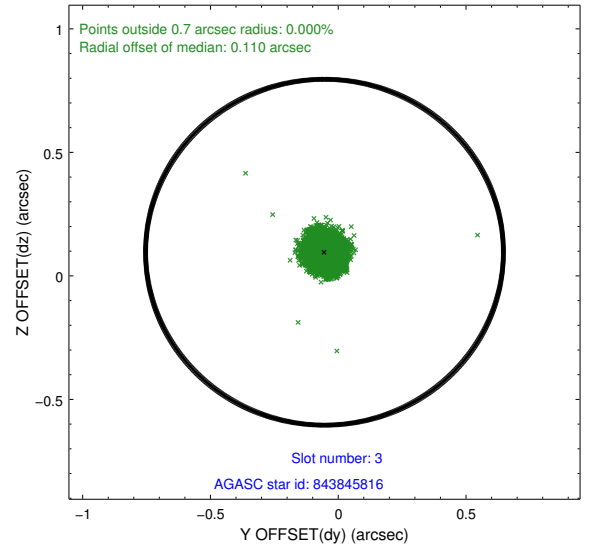
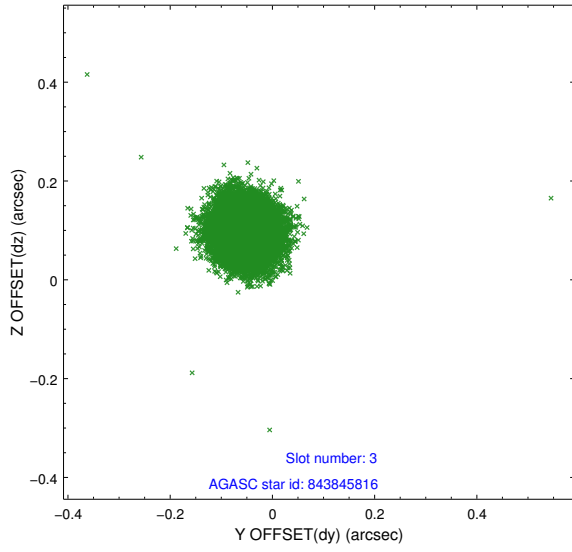


Slot Statistics

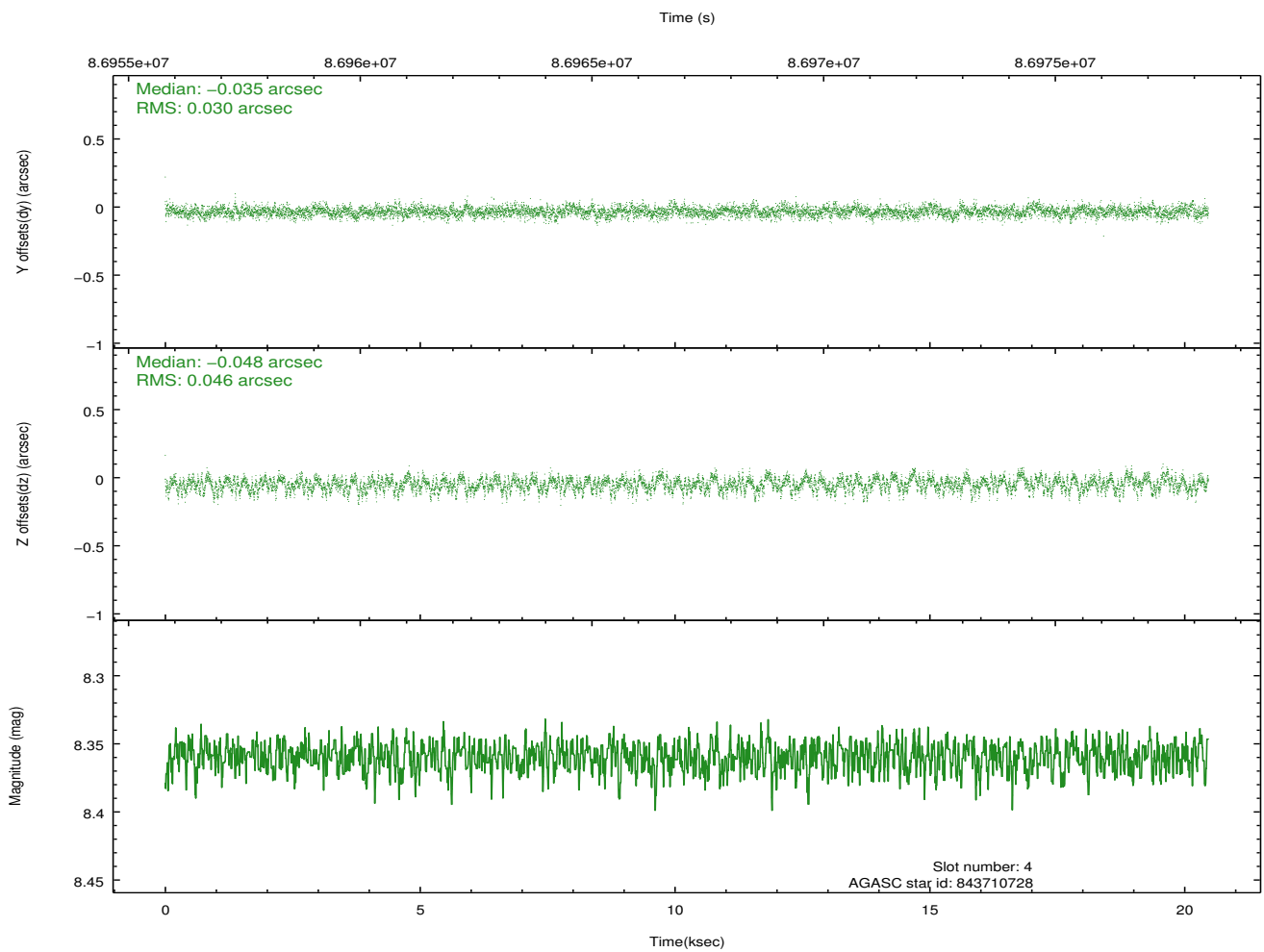
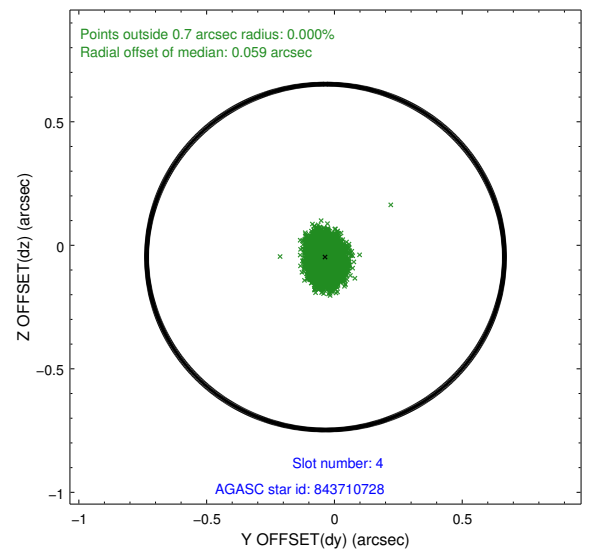
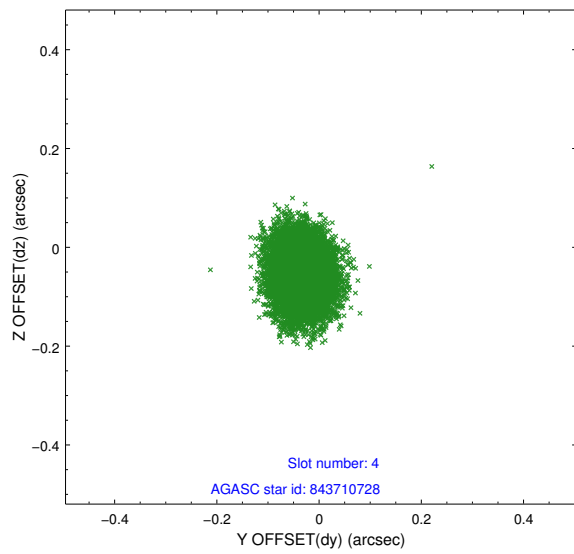
slot	status	id	mag	n_pts	med_dy	med_dz	dr1	dr2	ra	dec	mean_y	mean_z
0	FID	ACIS-I-2	7.17	4991	-0.049	-0.051	0.009	0.015	0.000000	0.000000	-756.27	-992.62
1	FID	ACIS-I-4	7.16	4992	-0.035	0.049	0.007	0.012	0.000000	0.000000	2157.65	913.54
2	FID	ACIS-I-5	7.22	4992	-0.018	0.071	0.008	0.014	0.000000	0.000000	-1809.46	910.56
3	GUIDE	843845816	7.81	9985	-0.054	0.096	0.055	0.085	44.829539	-23.689415	159.71	-1948.27
4	GUIDE	843710728	8.36	9985	-0.035	-0.048	0.058	0.095	44.214884	-22.985501	1091.66	1162.86
5	GUIDE	843713992	9.21	9982	0.056	-0.182	0.103	0.169	43.536281	-23.409699	-1444.78	2132.65
6	GUIDE	843850048	9.59	9983	-0.073	0.156	0.107	0.179	45.188374	-23.374608	1763.88	-2284.67
7	GUIDE	843715344	9.64	9979	0.104	-0.021	0.115	0.185	43.754026	-23.341523	-831.27	1683.29

2.4 Star Slots

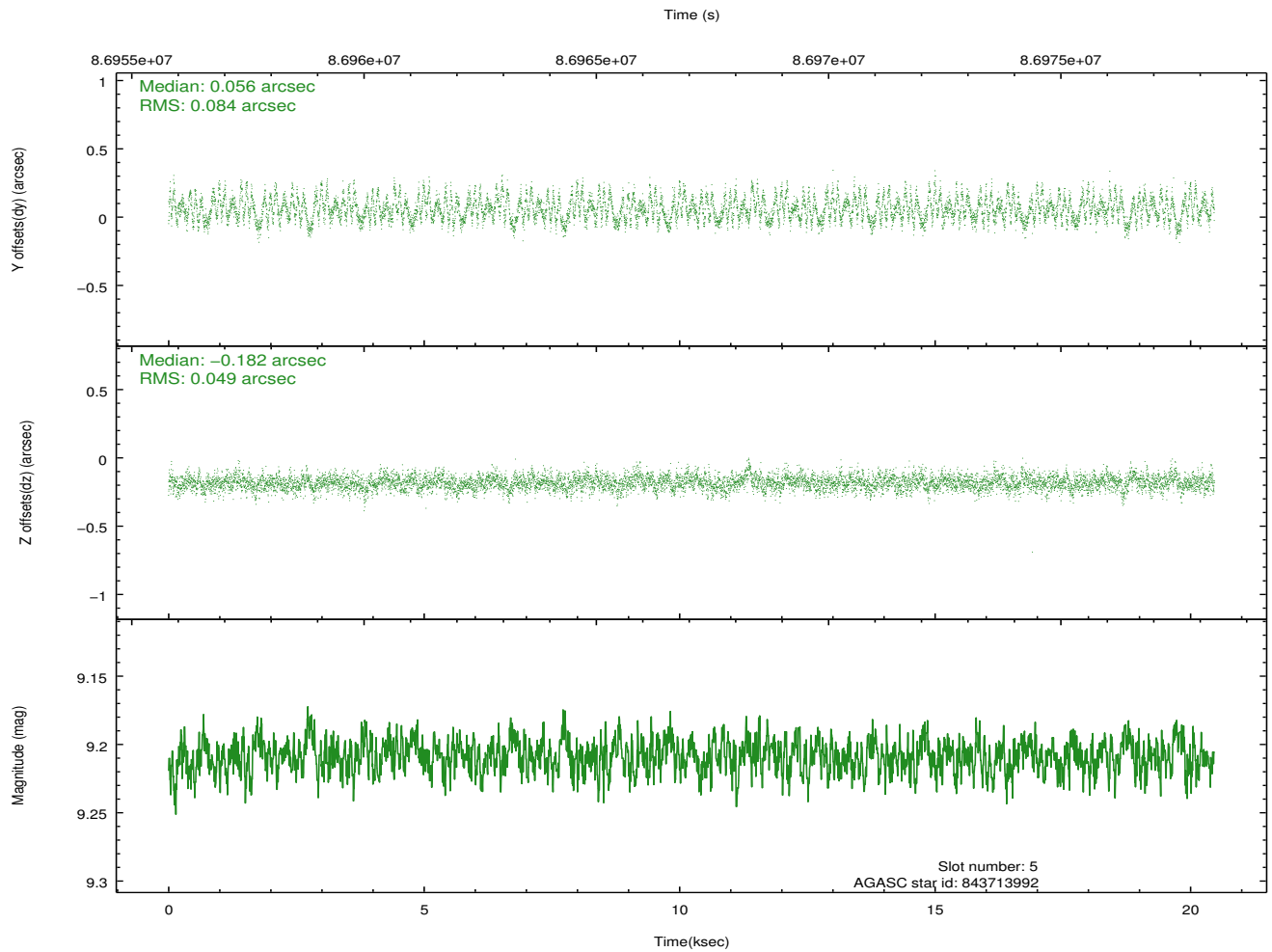
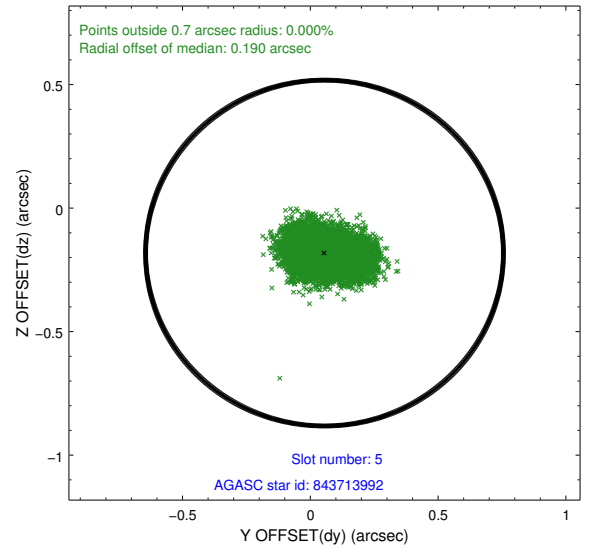
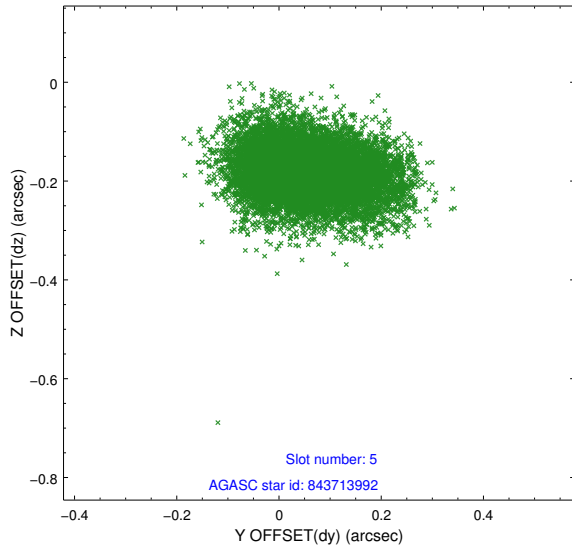
2.4.1 Slot 3



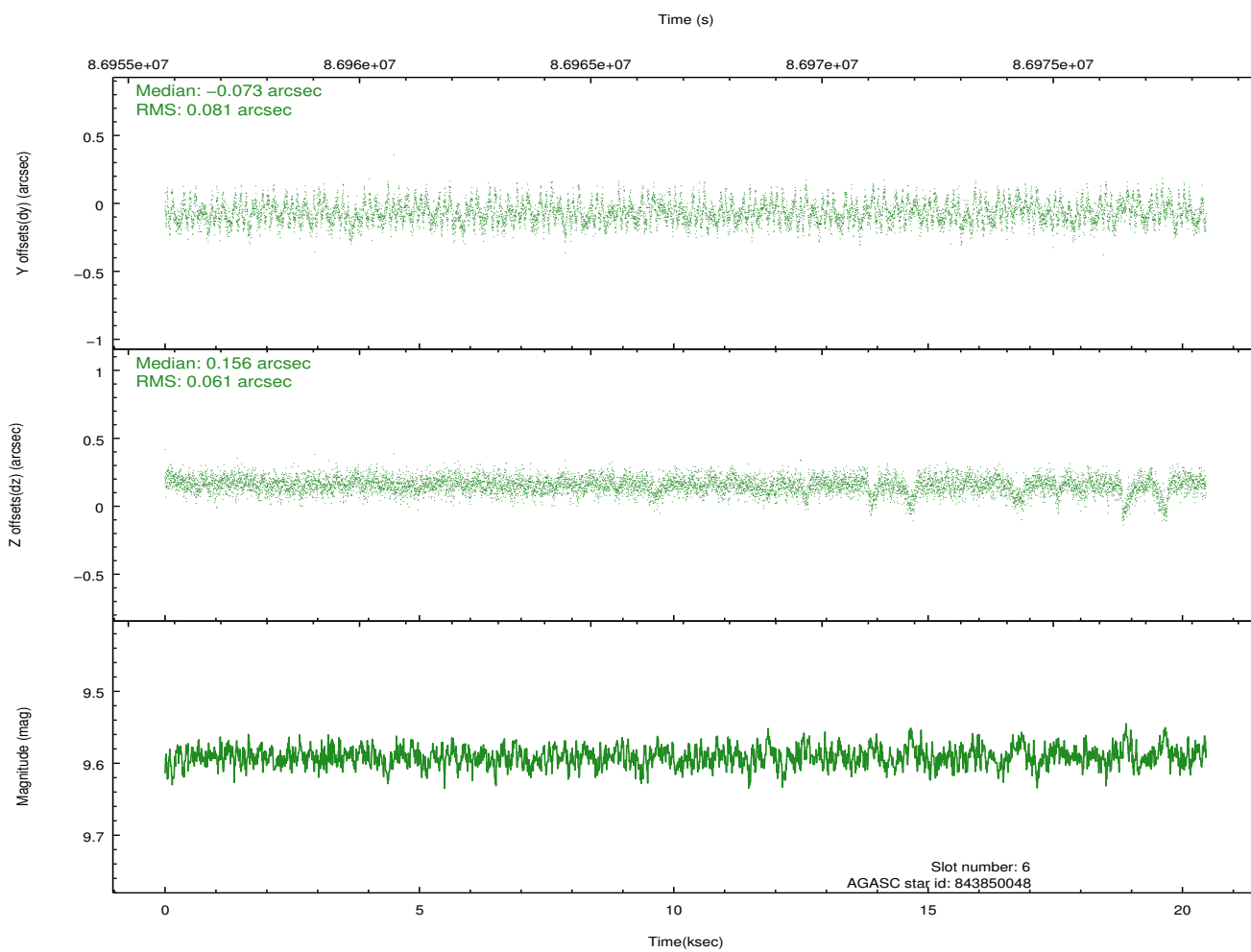
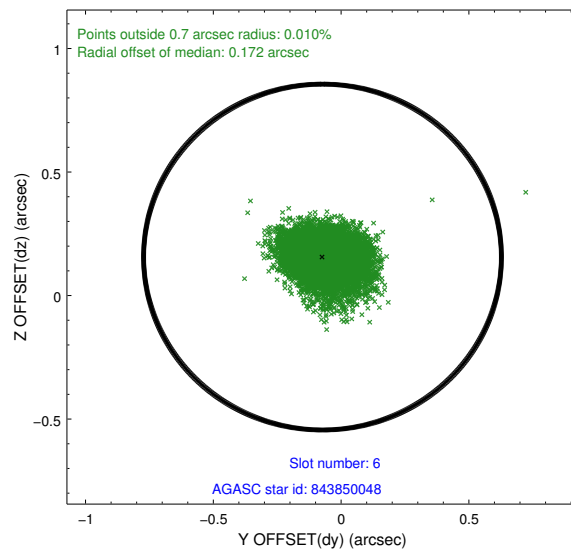
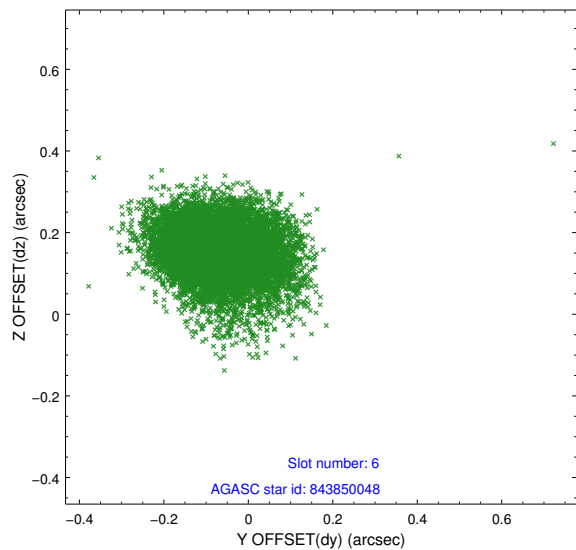
2.4.2 Slot 4



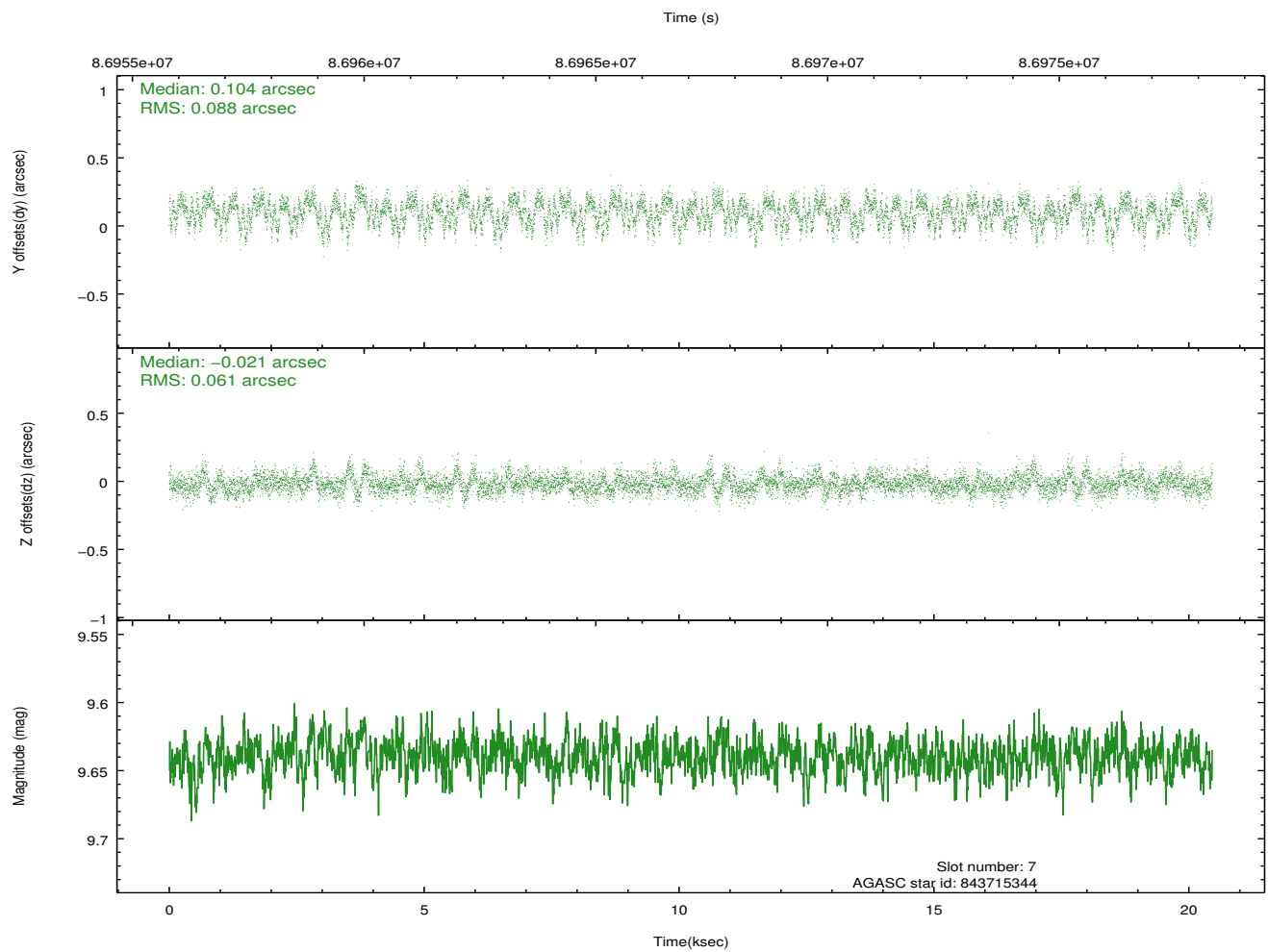
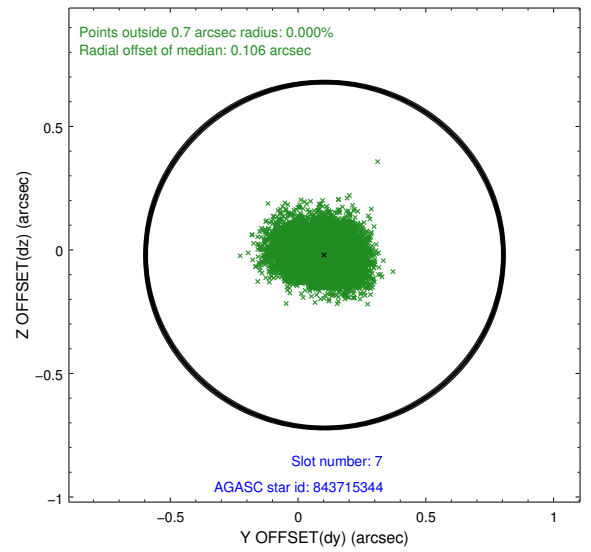
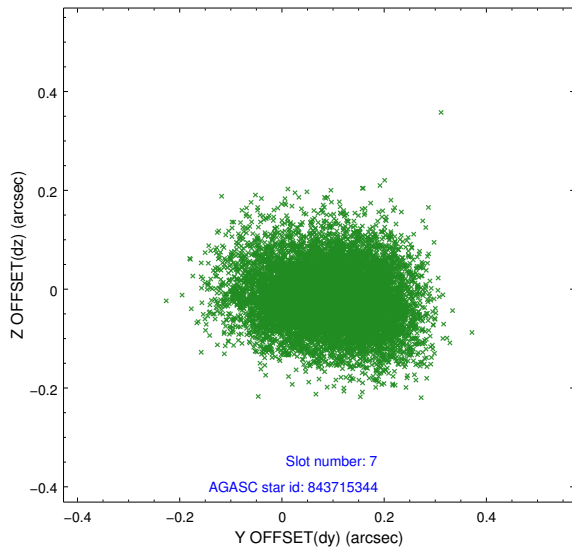
2.4.3 Slot 5



2.4.4 Slot 6

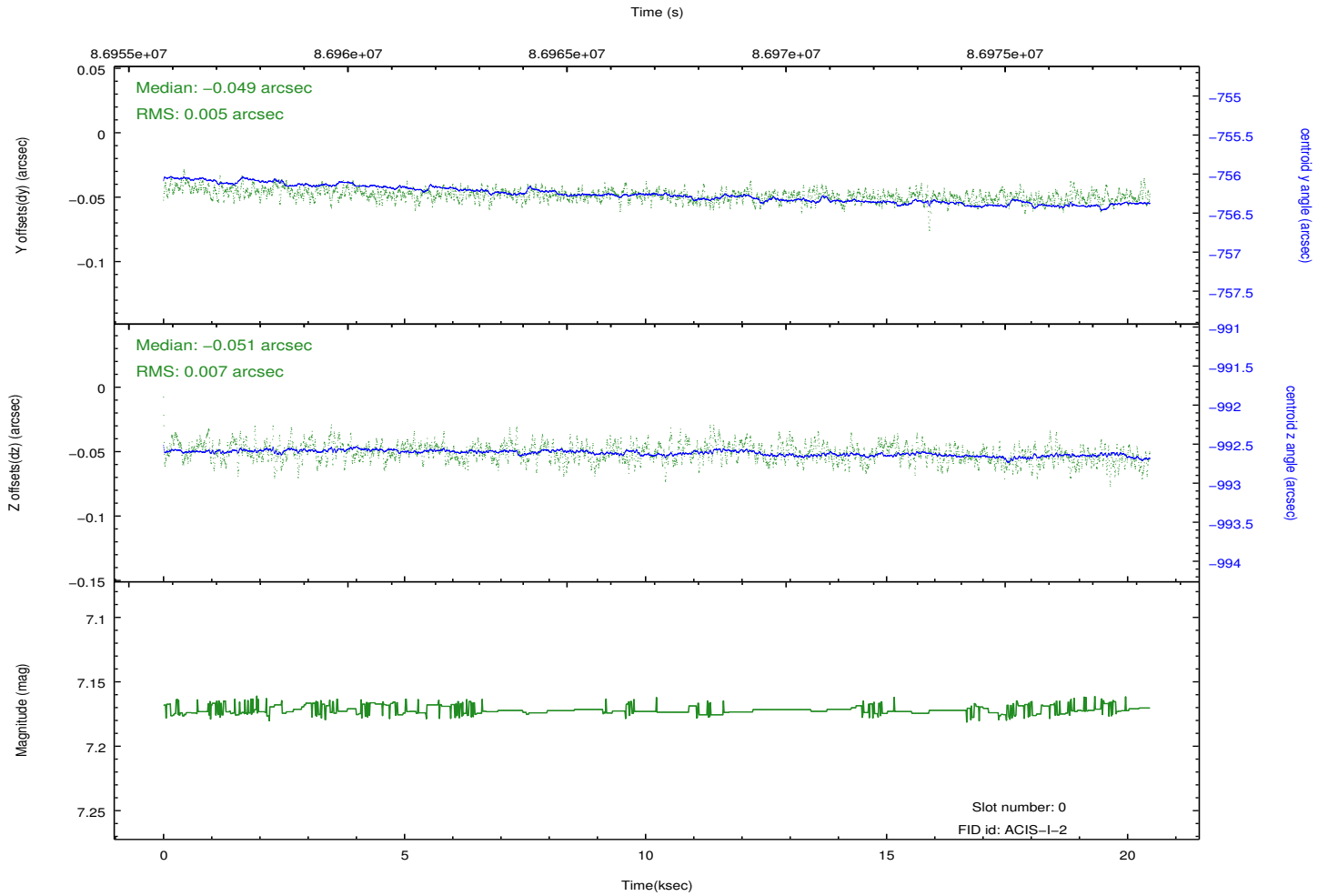
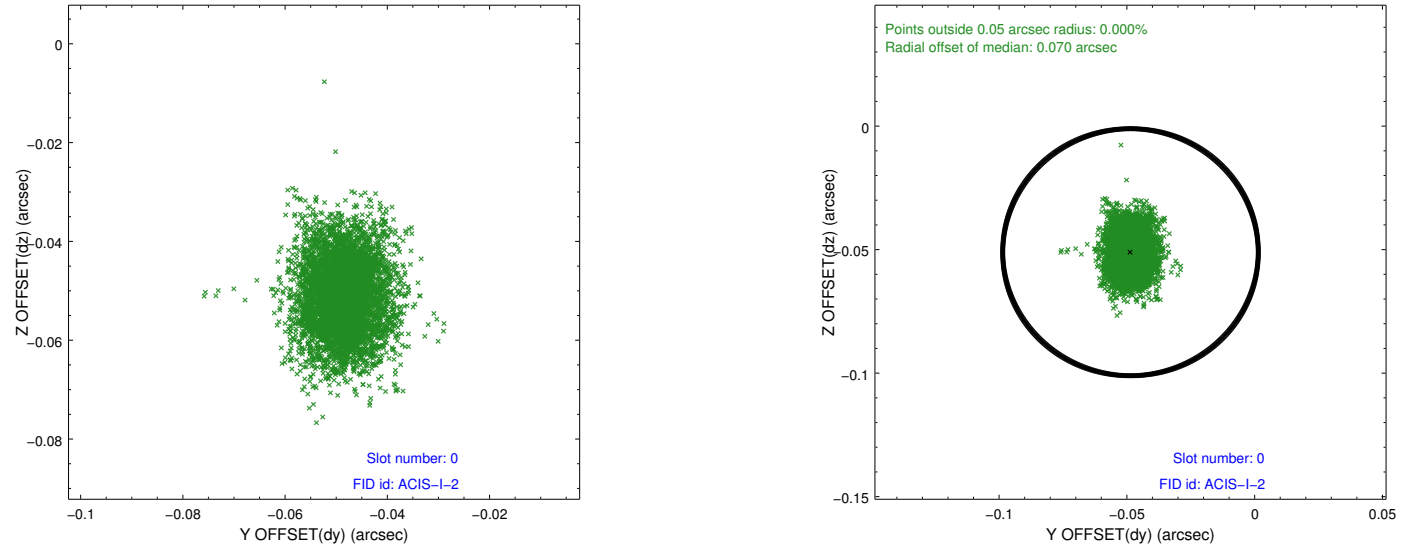


2.4.5 Slot 7

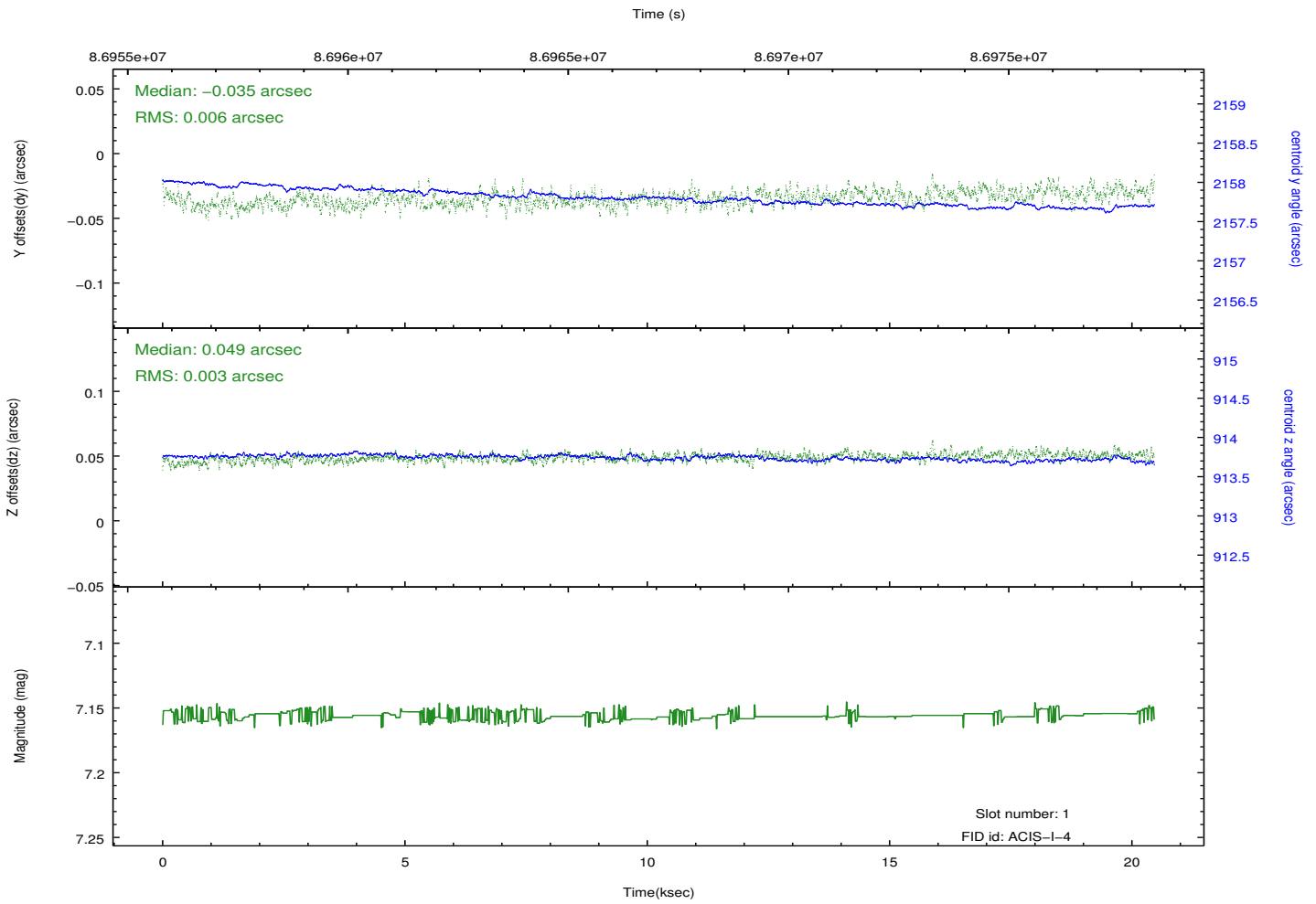
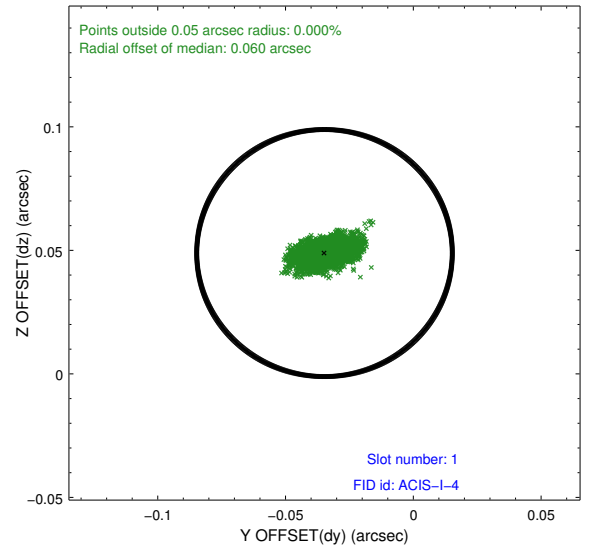
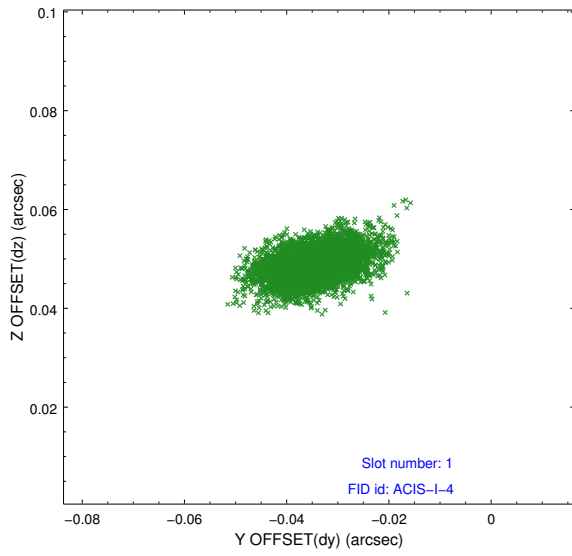


2.5 FID Slots

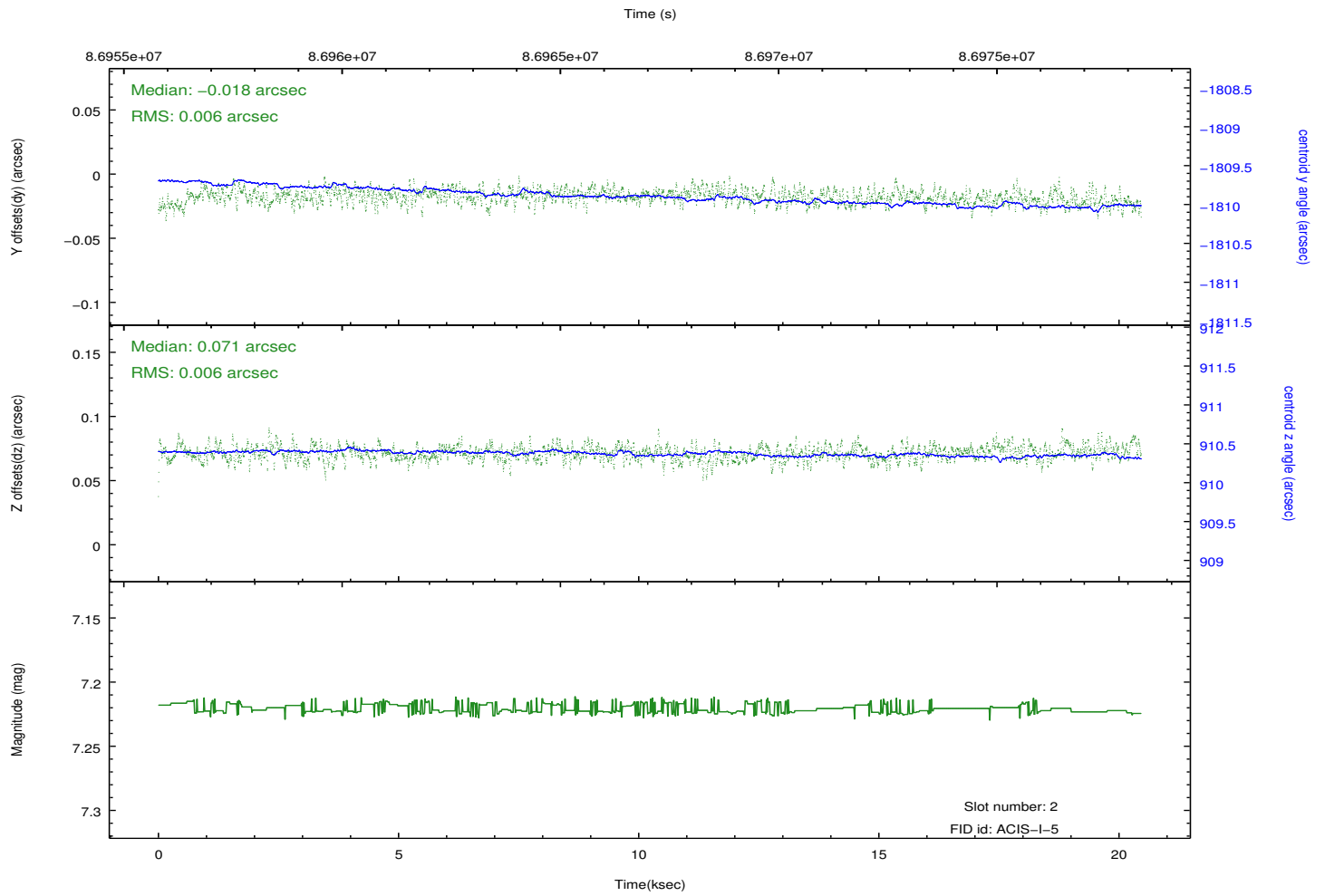
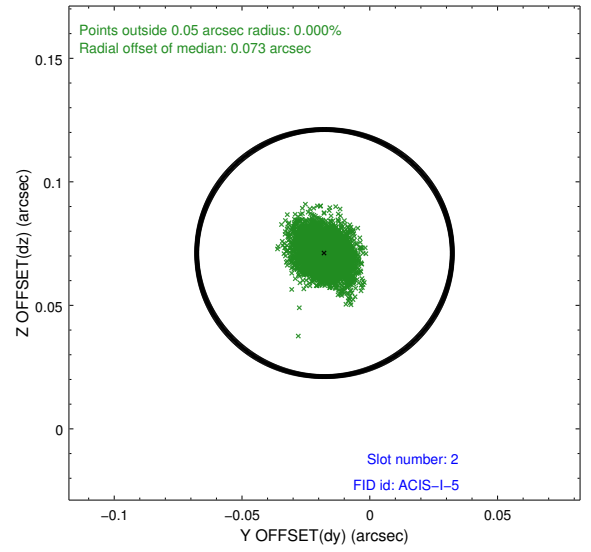
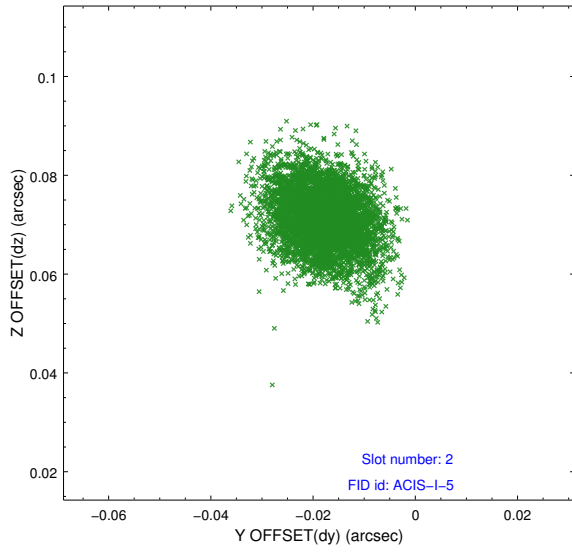
2.5.1 Slot 0



2.5.2 Slot 1



2.5.3 Slot 2



A Summary

A.1 Status

V&V Scientist	Jen Lauer
V&V Date (YYYY-MM-DD)	2012.09.14
V&V Edition	1
V&V Disposition and Status	OK
V&V Charge Time	20.109

A.2 Comments