

V&V Reference Report

L2 ASCDS Version : 10.3.1

Observation 16974 - L2 Version 1
Chandra X-Ray Center

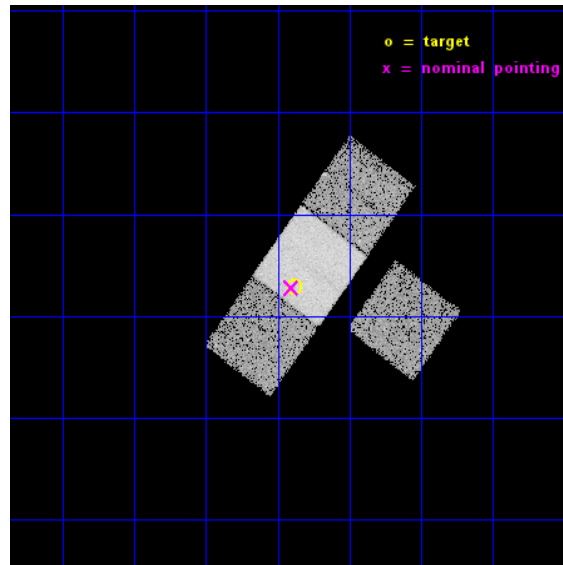
L2 Processing Date : Dec 11 2014

Contents

1	Front	2
2	OBI	3
2.1	OBI	3
2.1.1	Images	3
2.1.2	Bias	3
2.1.3	Parameters	4
2.1.4	Events	4
2.2	Compared Parameters	5
2.3	Aspect	6
2.4	Star Slots	9
2.4.1	Slot 3	9
2.4.2	Slot 4	10
2.4.3	Slot 5	11
2.4.4	Slot 6	12
2.4.5	Slot 7	13
2.5	FID Slots	14
2.5.1	Slot 0	14
2.5.2	Slot 1	15
2.5.3	Slot 2	16
A	Summary	17
A.1	Status	17
A.2	Comments	17

1 Front

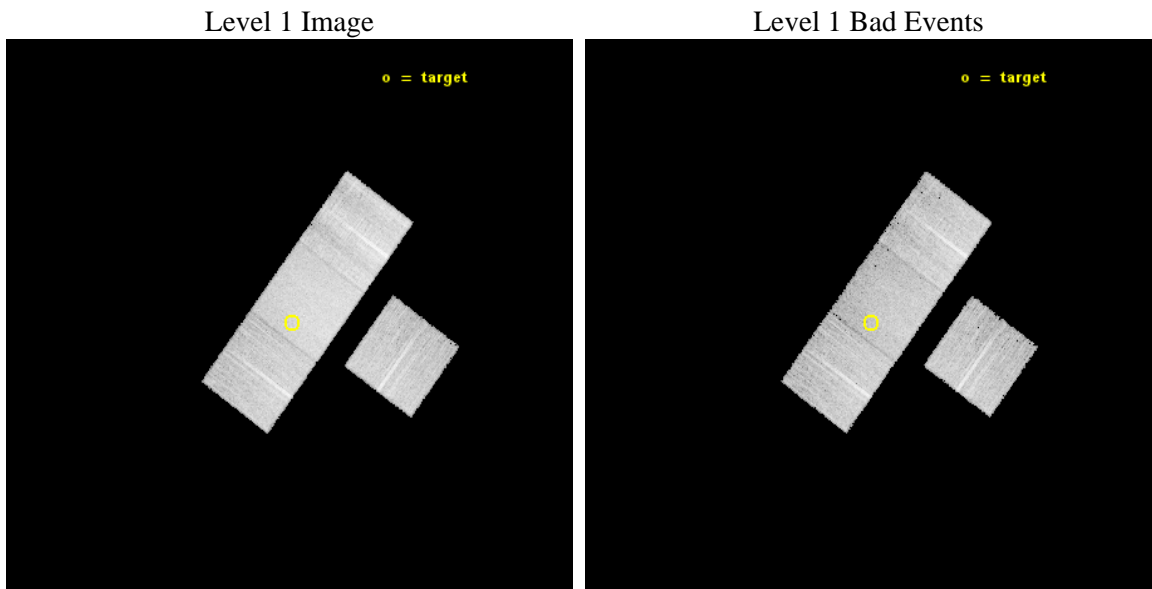
seq_num	601167	Sequence number
obs_id	16974	Observation id
title	Searching for Accreting Black Holes in Lyman Continuum Emitters	Pr
observer	Prof. Philip Kaaret	Principal investigator
object	GALEX J024352.8-003703	Source name
dtcycle	0	
cycle	P	events from which exps? Prim/Second/Both
ra_targ	40.970833	Observer's specified target RA [deg]
dec_targ	-0.618889	Observer's specified target Dec [deg]
ra_nom	40.976112926952	Nominal RA [deg]
dec_nom	-0.62025281975678	Nominal Dec [deg]
roll_nom	306.3113164256	Nominal Roll [deg]
revision	1	Processing version of data
ontime	17775.181326985	Sum of GTIs [s]
livetime	17542.93549705	Livetime [s]
ontime3	17775.099246979	Sum of GTIs [s]
ontime6	17771.99925667	Sum of GTIs [s]
ontime7	17775.181326985	Sum of GTIs [s]
ontime8	17771.917156041	Sum of GTIs [s]
l2events	75449	Number of level 2 events



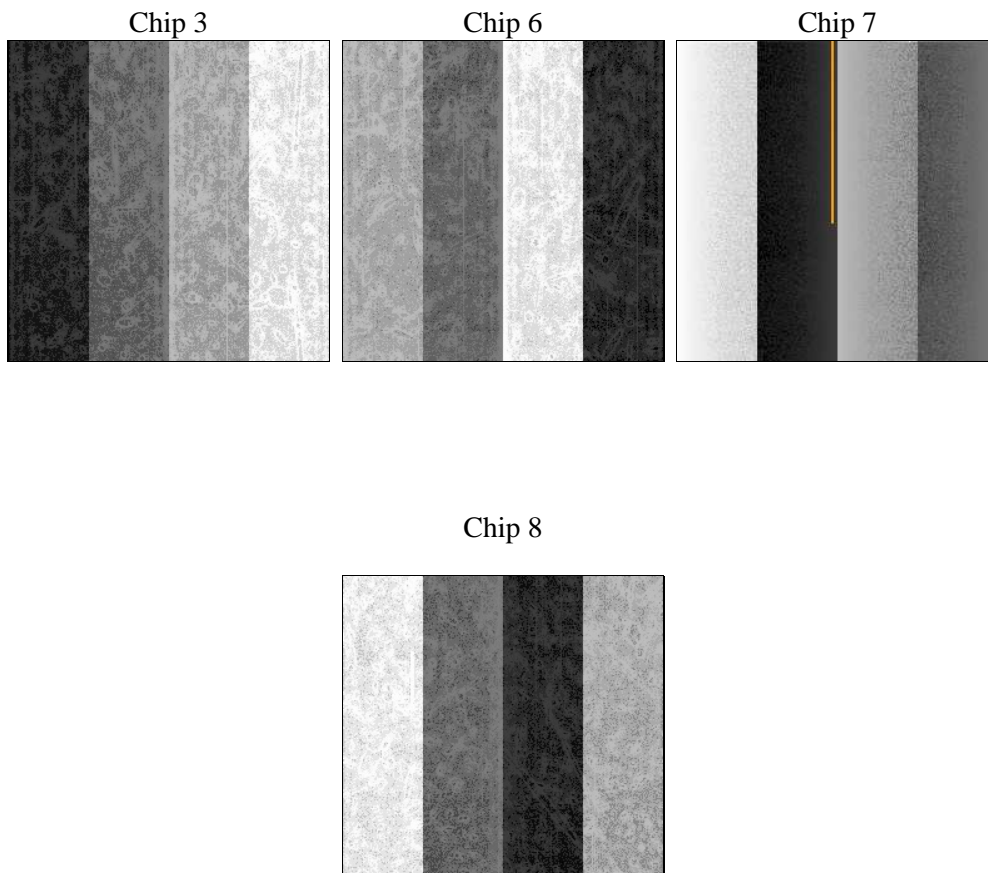
2 OBI

2.1 OBI

2.1.1 Images



2.1.2 Bias



2.1.3 Parameters

obi_num	1	Obi number	sched_exp_time	17700.933000	[s] Scheduled observation exposure time
ascdsver	10.3.1	Processing system revision	ontime	17775.181326985	Sum of GTIs [s]
caldsver	4.6.4	 	ontime3	17775.099246979	Sum of GTIs [s]
date	2014-12-11T05:11:10	Date and time of file creation	ontime6	17771.99925667	Sum of GTIs [s]
revision	1	Processing version of data	ontime7	17775.181326985	Sum of GTIs [s]
			ontime8	17771.917156041	Sum of GTIs [s]
			l1events	398990	Number of level 1 events

2.1.4 Events

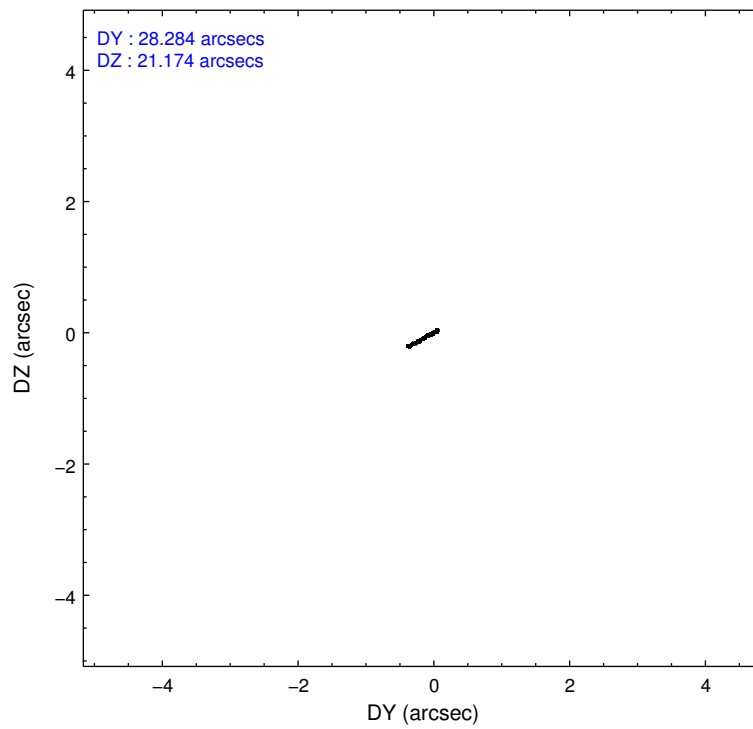
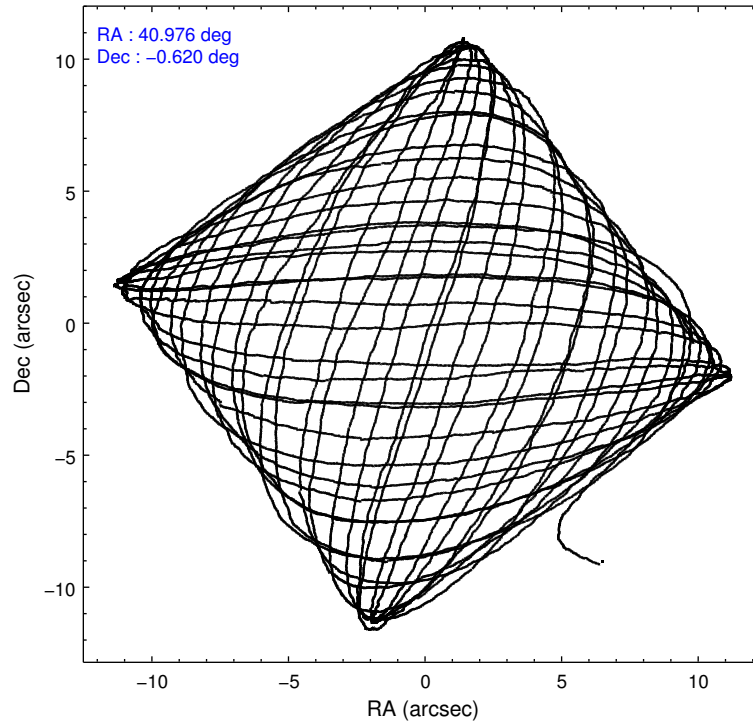
	ccd 3	ccd 6	ccd 7	ccd 8
level 1 events	81922	87671	115112	114285
rejected events	72609	77129	65926	84286
rejected %	88%	87%	57%	73%

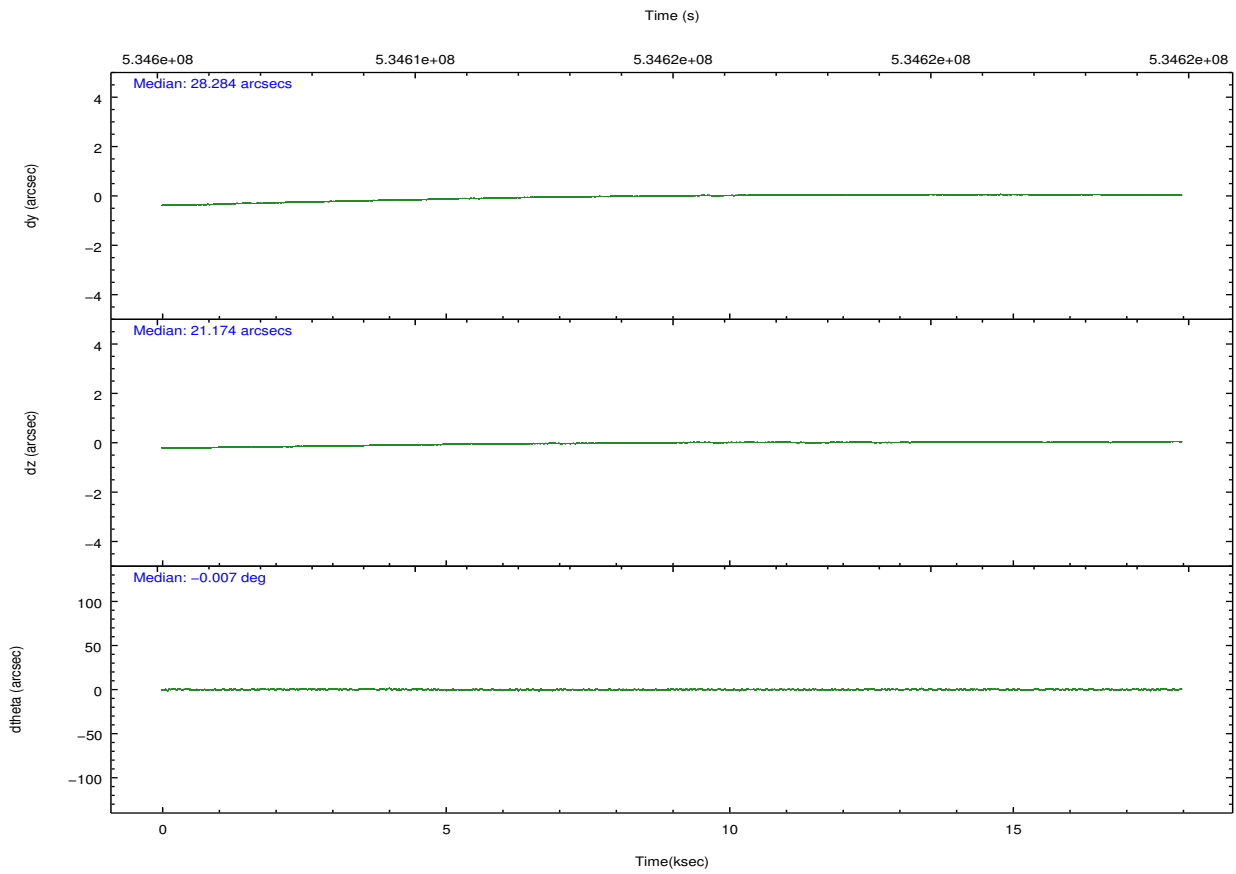
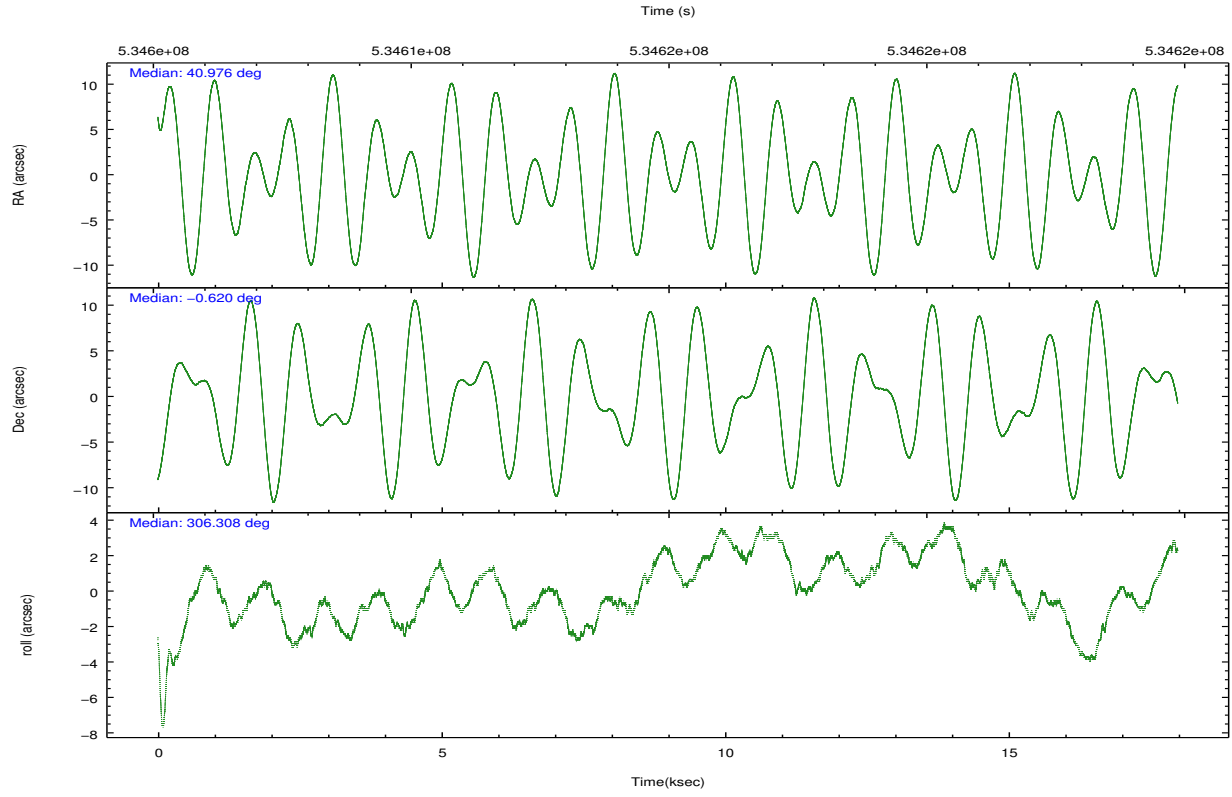
	ccd 3	ccd 6	ccd 7	ccd 8
grade 0 events	3190	3640	4050	8277
	3%	4%	3%	7%
grade 1 events	49	47	149	81
	0%	0%	0%	0%
grade 2 events	2065	2398	10132	7205
	2%	2%	8%	6%
grade 3 events	1028	1036	3818	3325
	1%	1%	3%	2%
grade 4 events	986	960	3876	3008
	1%	1%	3%	2%
grade 5 events	4383	4404	11485	6395
	5%	5%	9%	5%
grade 6 events	2045	2513	27326	8188
	2%	2%	23%	7%
grade 7 events	68176	72673	54276	77806
	83%	82%	47%	68%

2.2 Compared Parameters

Parameter	Planned	Actual	Parameter	Planned	Actual
Instrument	ACIS	ACIS	Obspar format version number	7	7
Detector	ACIS-3678	ACIS-3678	Obspar file type	PREDICTED	ACTUAL
Grating	NONE	NONE	Obspar update status	NONE	UPDATED
Data mode	VFAINT	VFAINT	CCD I0 on	N	N
Observation mode	POINTING	POINTING	CCD I1 on	N	N
[deg] Pointing RA	40.950809	40.97611292695229	CCD I2 on	N	N
[deg] Pointing Dec	-0.609569	-0.6202528197567775	CCD I3 on	O1	Y
[deg] Pointing Roll	306.154415	306.3113164255993	CCD S0 on	N	N
[mm] SIM focus pos	-0.684267	-0.6828225247311905	CCD S1 on	N	N
[mm] SIM defocus	0	0.001444936568705701	CCD S2 on	O2	Y
[mm] SIM translation stage pos	-190.132523	-190.145094680475	CCD S3 on	Y	Y
[mm] SIM translation stage offset	0	0.01257209746719923	CCD S4 on	O3	Y
[s] Observation start time (MET)	534606252.184000	534605322.72371	CCD S5 on	N	N
Observation start date	2014-12-10T13:43:05	2014-12-10T13:28:42	Number of optional ACIS chips dropped	0	0
[s] Observation end time (MET)	534623952.184000	534624178.11226	On-chip summing requested	N	N
Observation end date	2014-12-10T18:38:05	2014-12-10T18:42:58	Subarray requested	NONE	NONE
Read mode	TIMED	TIMED	Alternating exposures requested	N	N
			[s] Primary exposure time	0.000000	3.1

2.3 Aspect





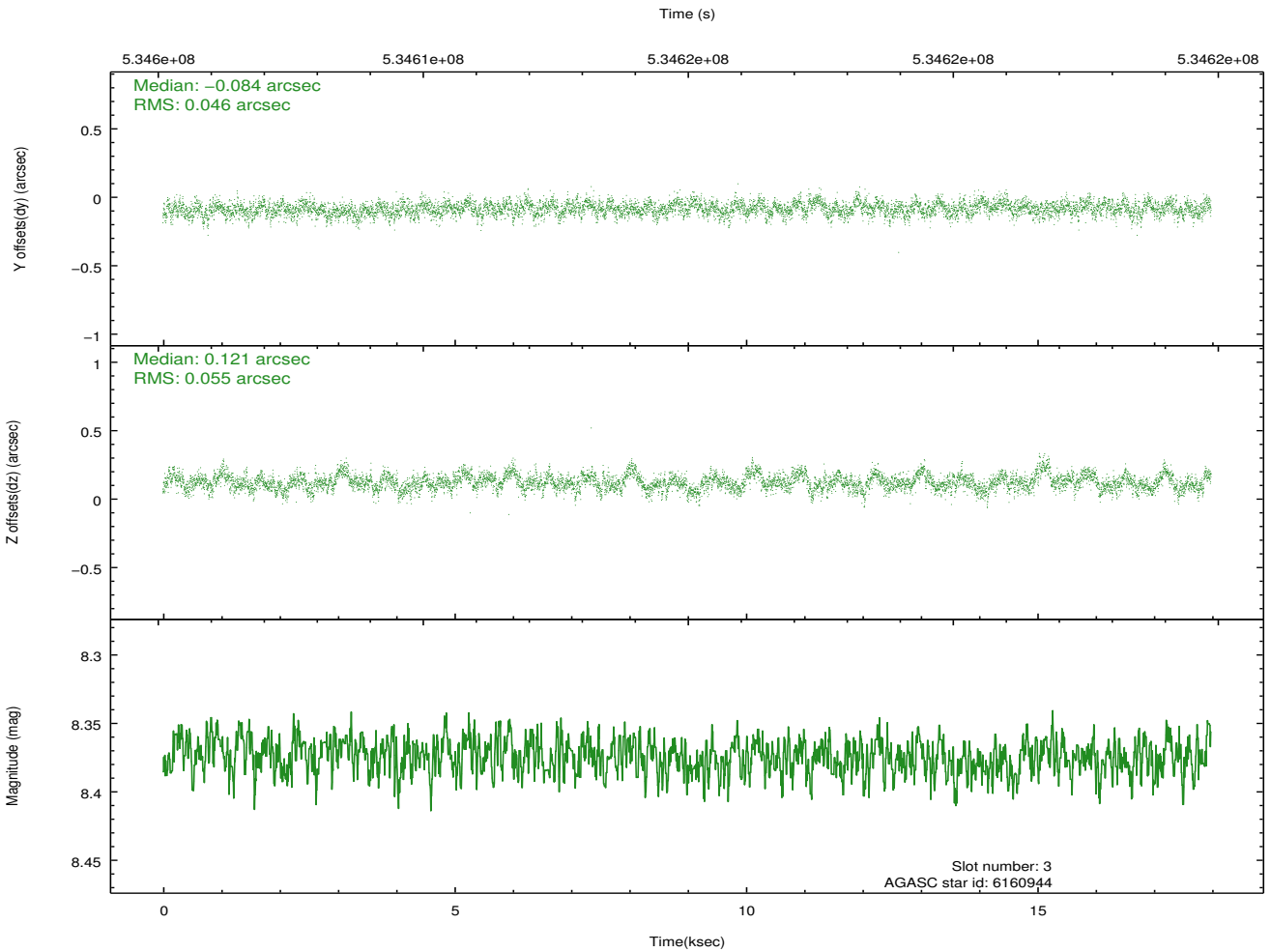
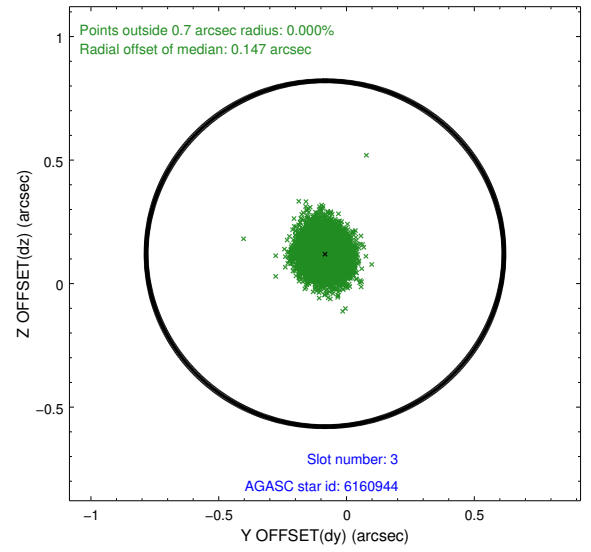
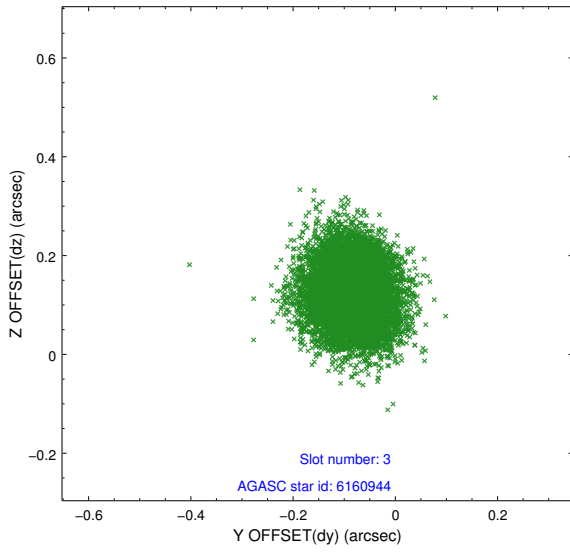
Slot Statistics

slot	status	used	id	mag	n_pts	med_dy	med_dz	dr1	dr2	ra	dec	mean_y	mean_z
0	FID		ACIS-S-1	7.22	4386	0.111	-0.098	0.009	0.017	0.000000	0.000000	914.65	-1738.28
1	FID		ACIS-S-5	7.25	4386	-0.290	0.033	0.007	0.011	0.000000	0.000000	-1834.68	159.09
2	FID		ACIS-S-6	7.36	4386	0.157	0.077	0.008	0.015	0.000000	0.000000	379.93	803.42
3	GUIDE	used	6160944	8.37	8771	-0.084	0.121	0.075	0.123	40.821496	0.087247	-2299.99	1104.31
4	GUIDE	used	615907528	7.76	8772	-0.200	0.022	0.082	0.127	41.252710	-0.191636	-574.08	1765.38
5	GUIDE	used	615908528	7.71	8773	0.180	-0.169	0.077	0.122	41.178288	-0.846146	1170.98	158.87
6	GUIDE	used	615909768	9.06	8770	0.178	0.086	0.110	0.178	40.904100	-0.344520	-869.20	426.74
7	GUIDE	used	615913552	8.72	8770	-0.079	-0.058	0.094	0.153	41.235237	-0.003650	-1157.16	2113.68

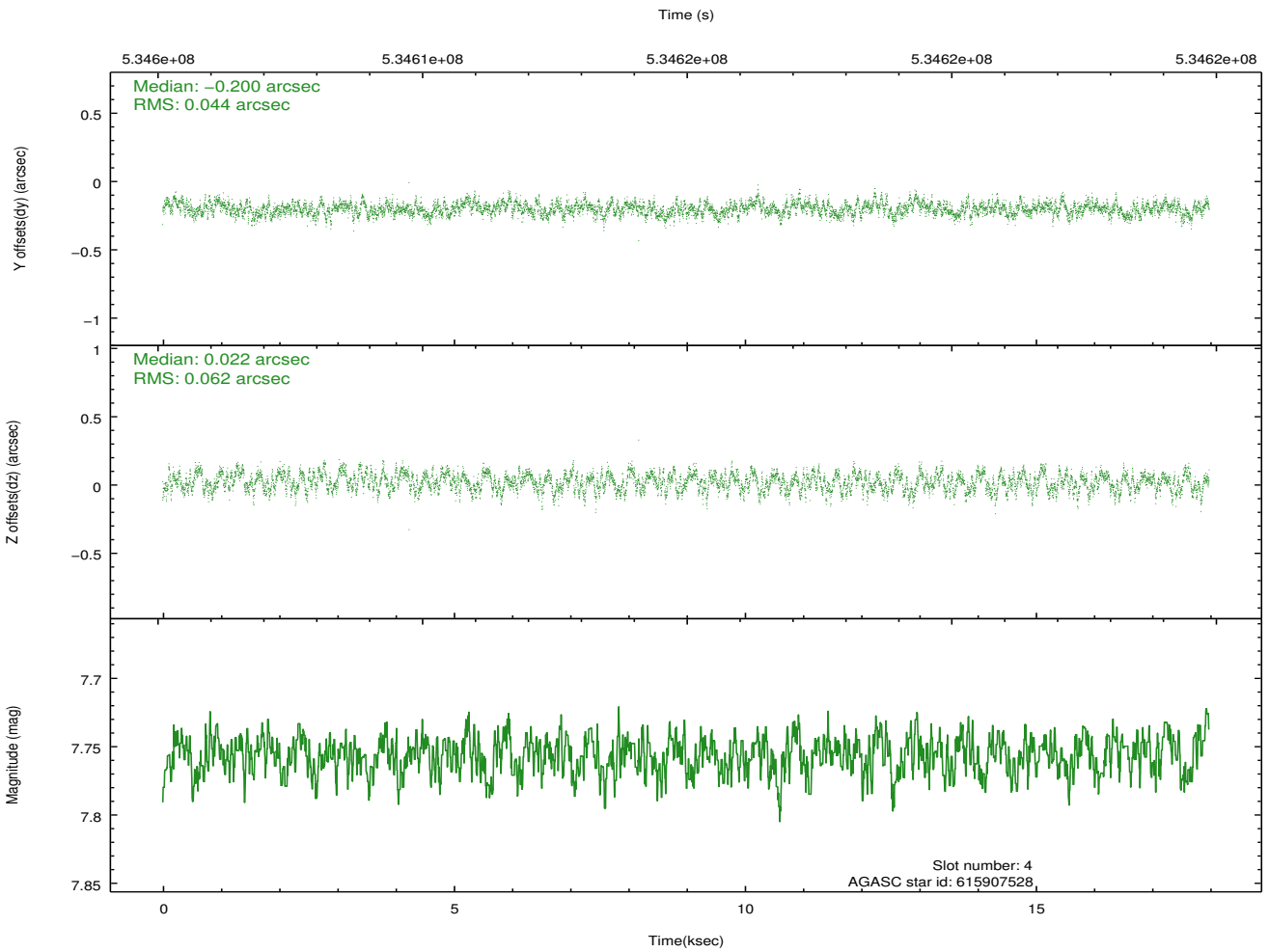
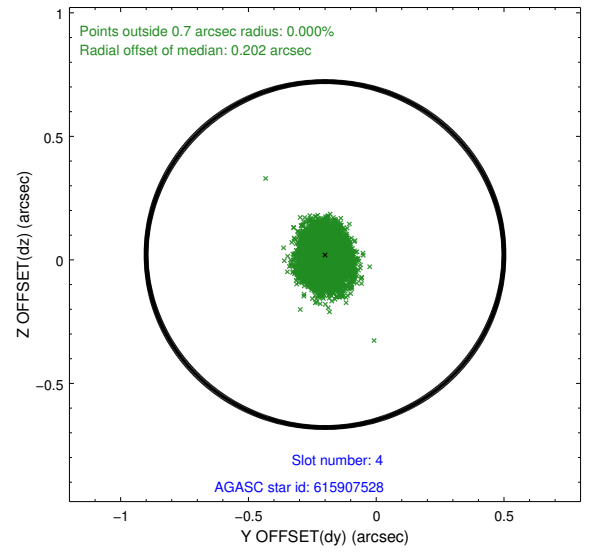
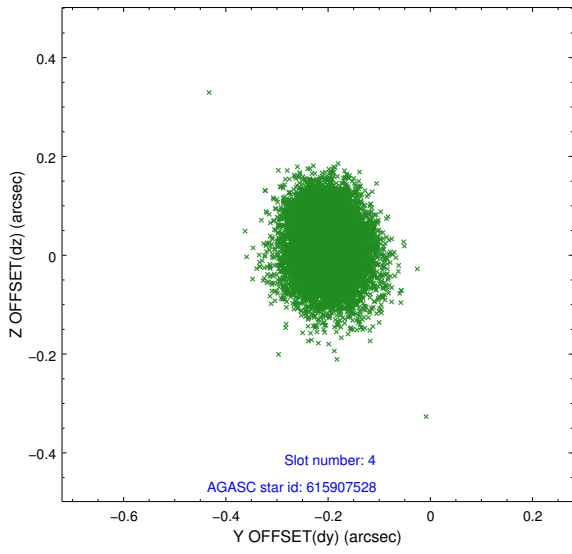
∞

2.4 Star Slots

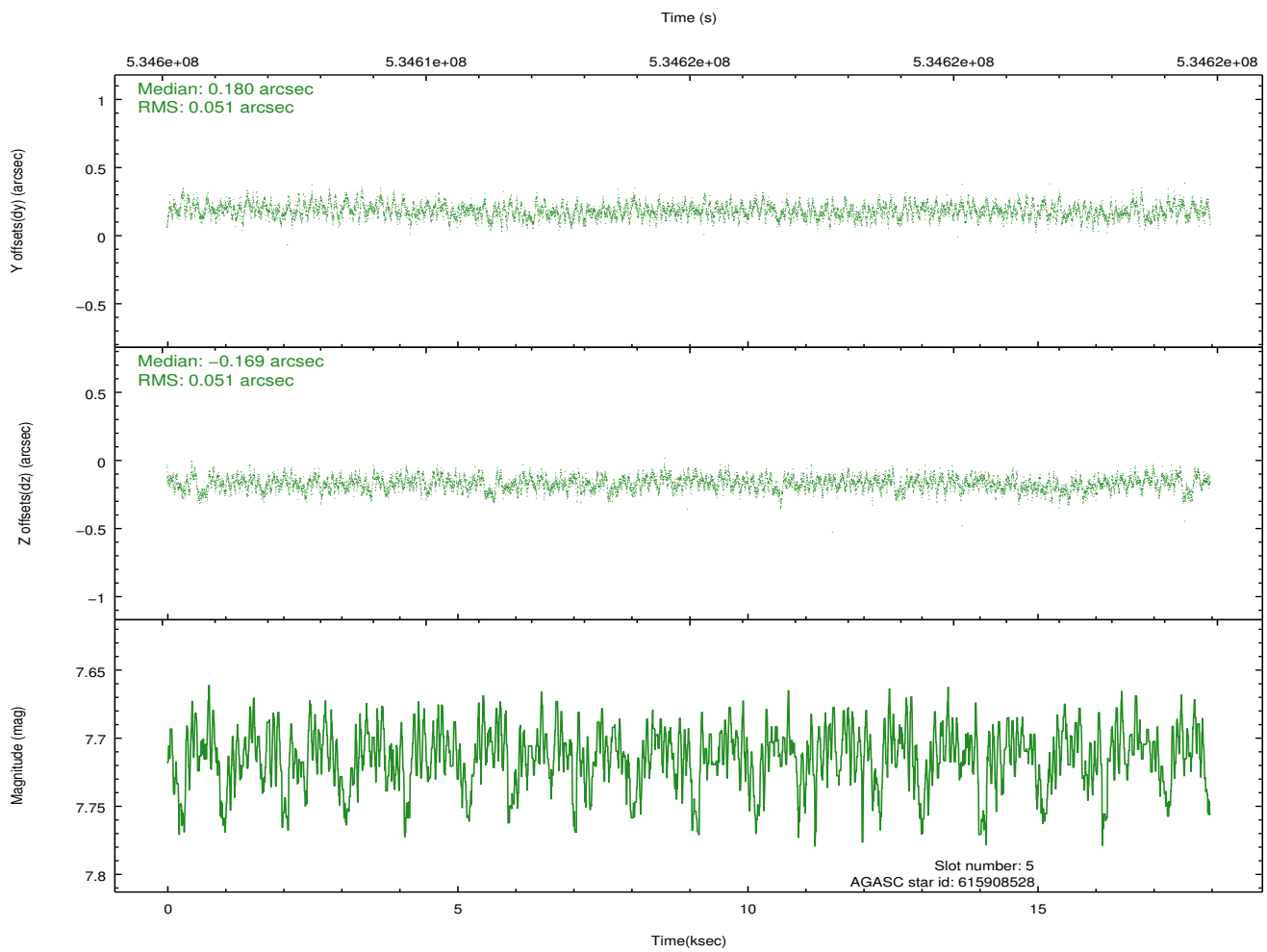
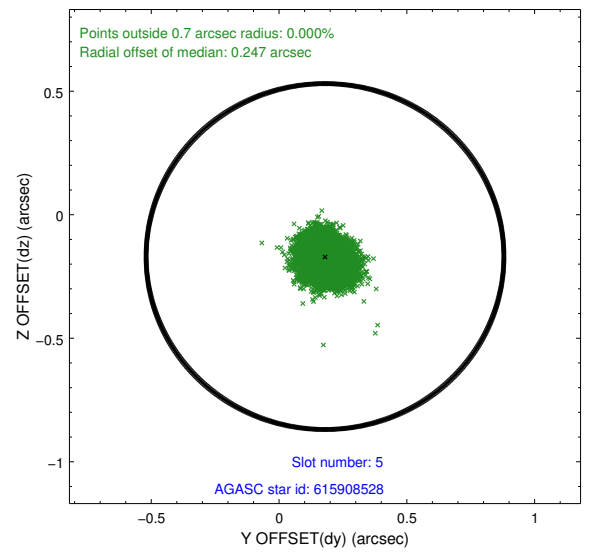
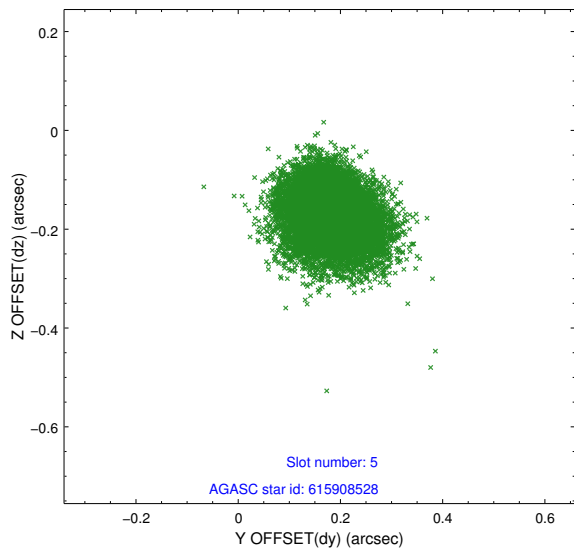
2.4.1 Slot 3



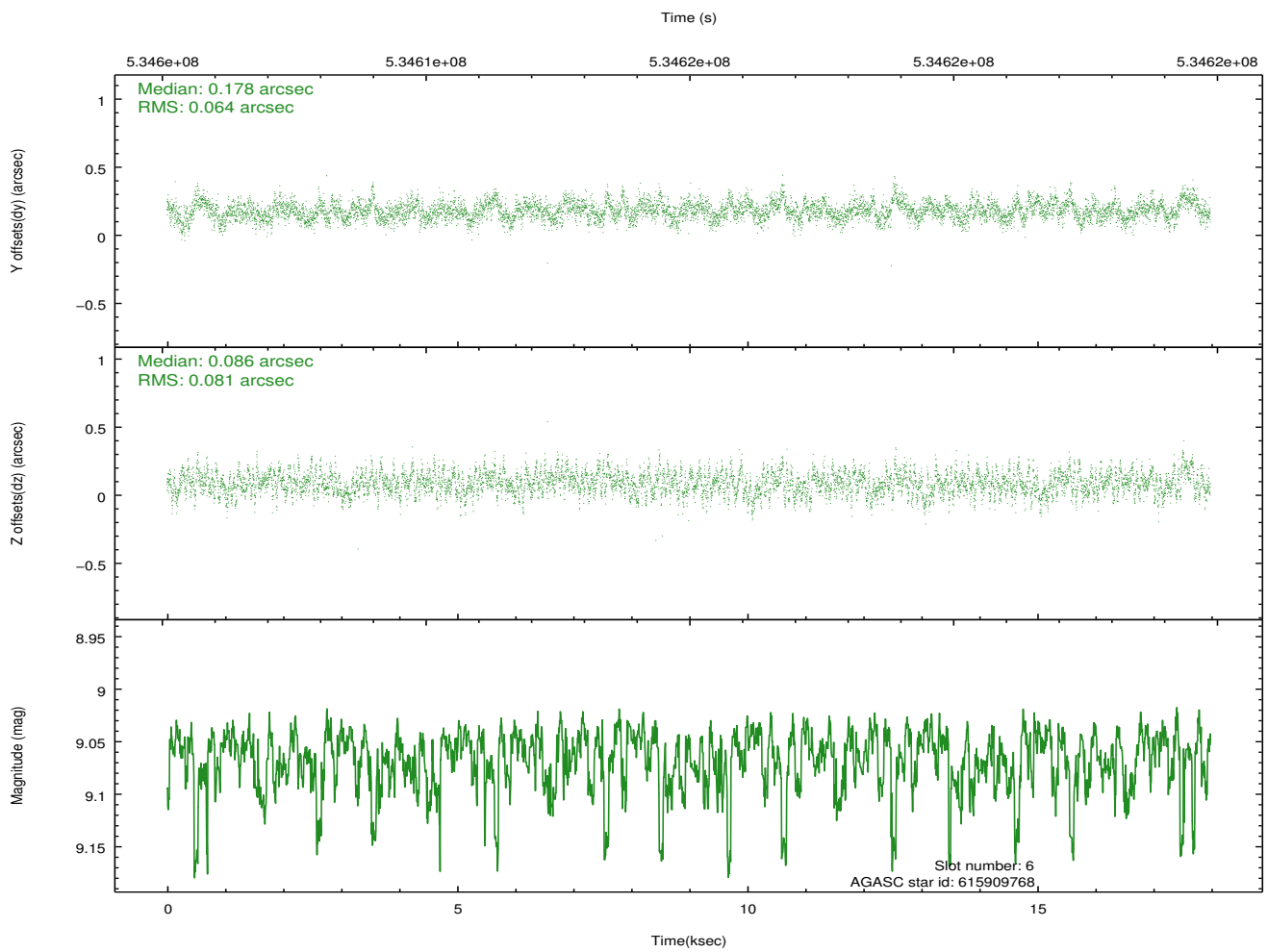
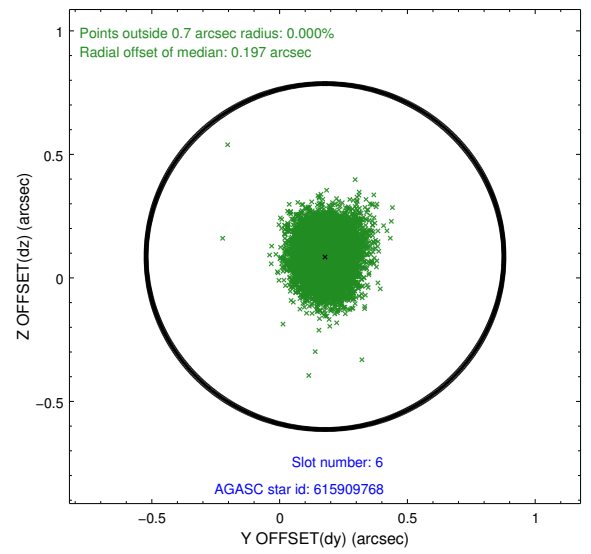
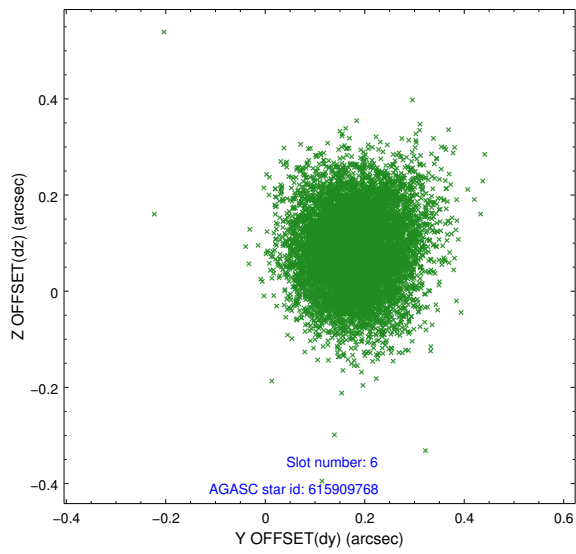
2.4.2 Slot 4



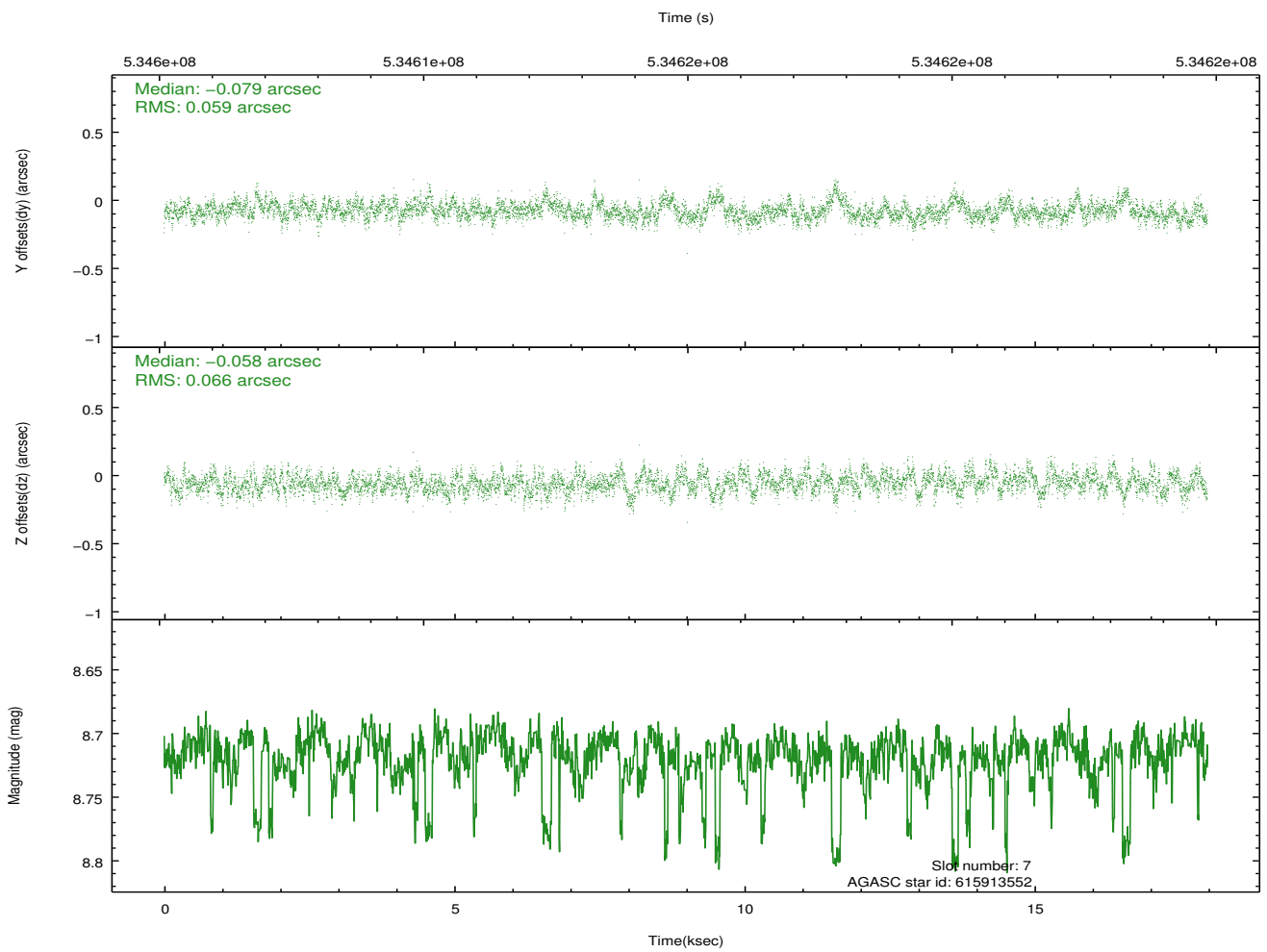
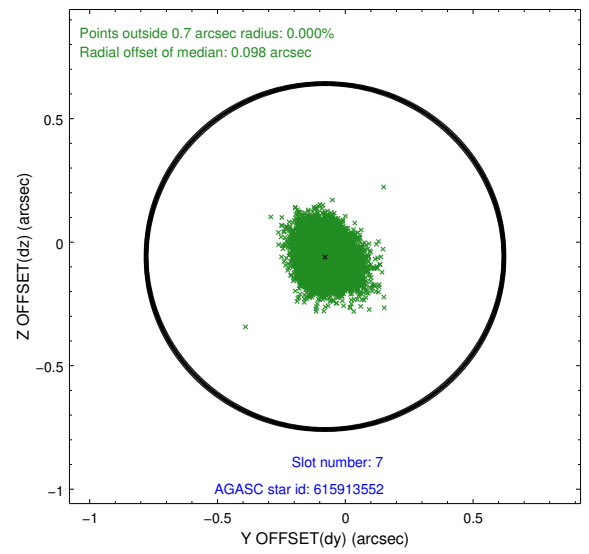
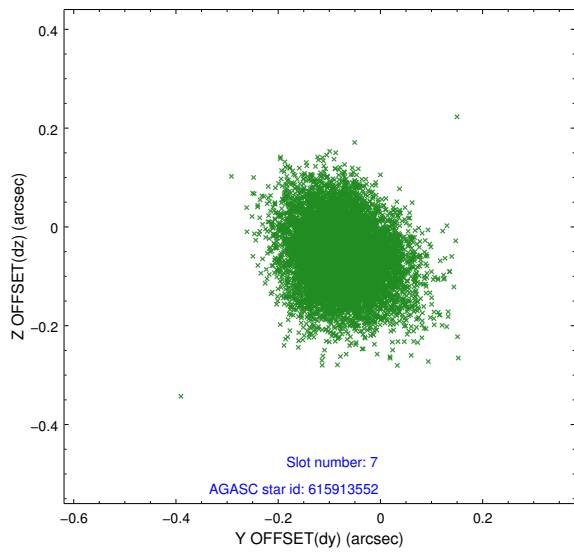
2.4.3 Slot 5



2.4.4 Slot 6

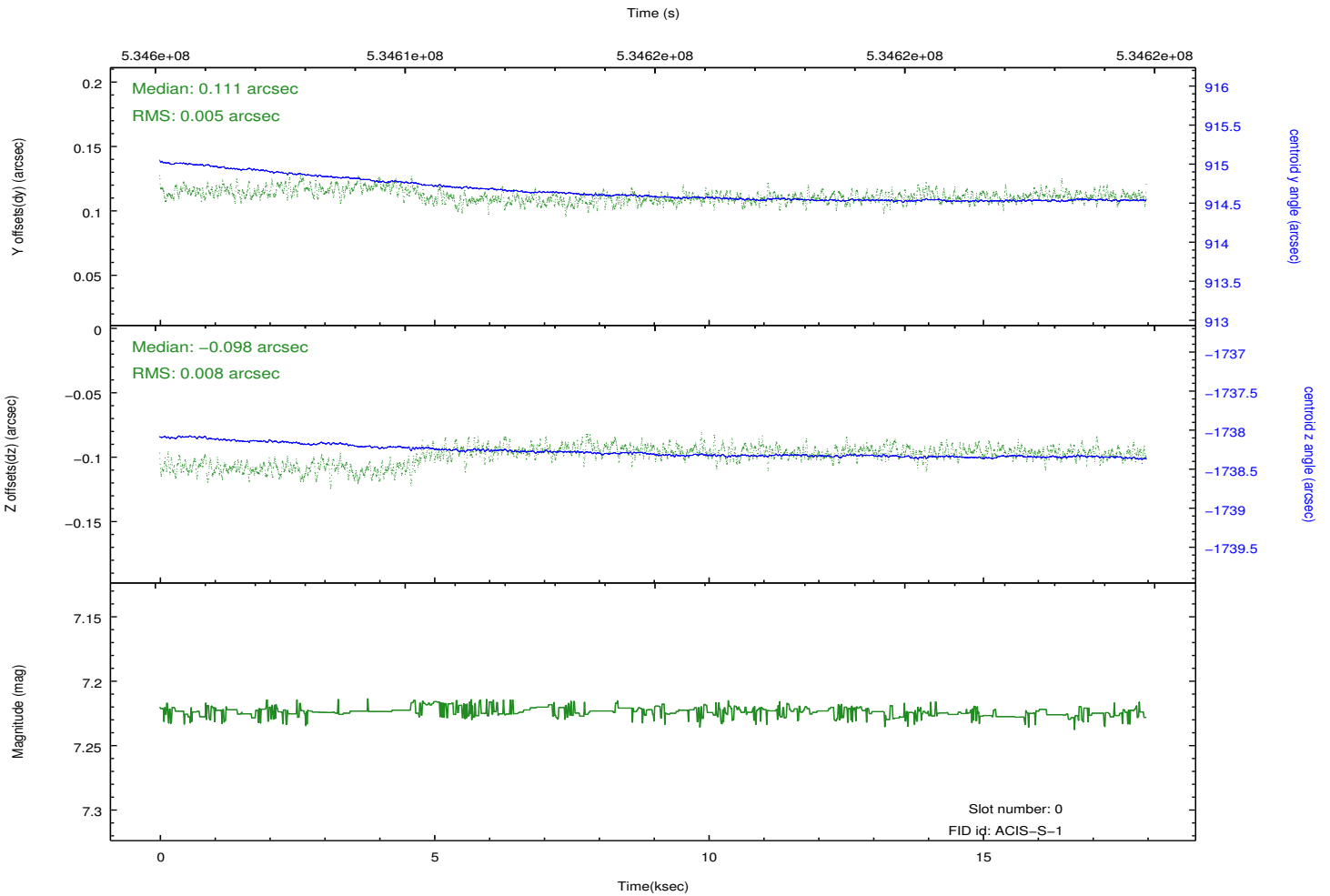
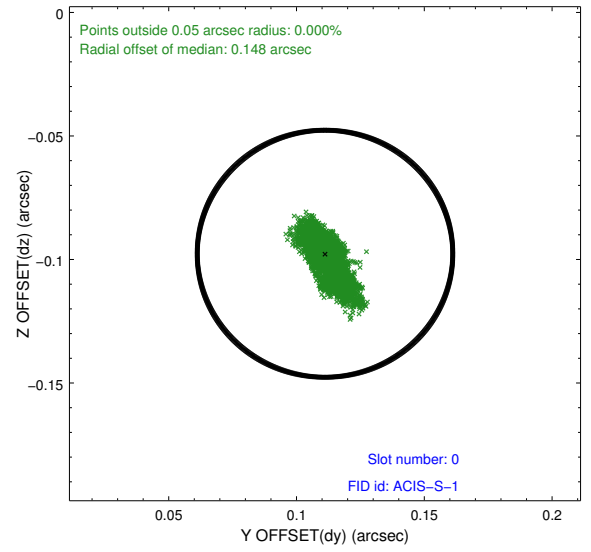
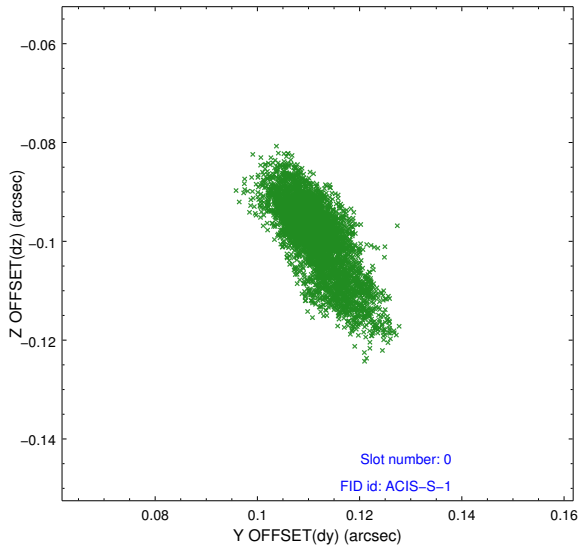


2.4.5 Slot 7

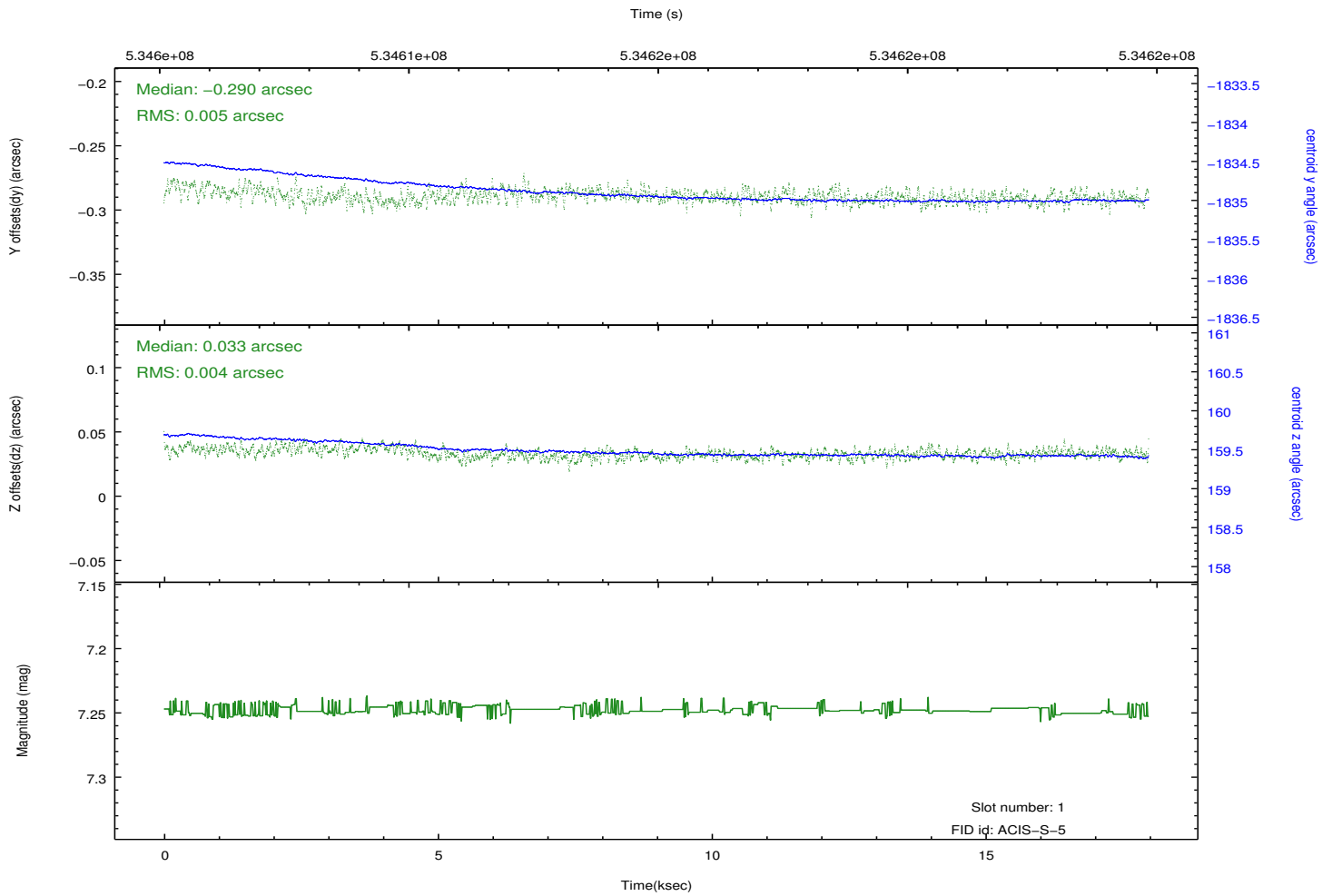
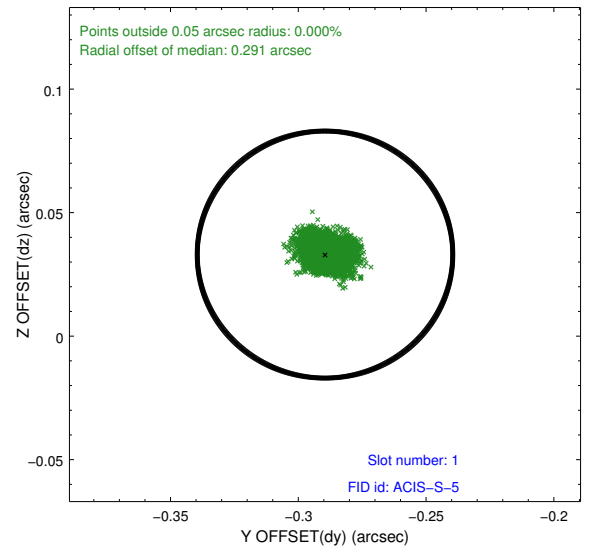
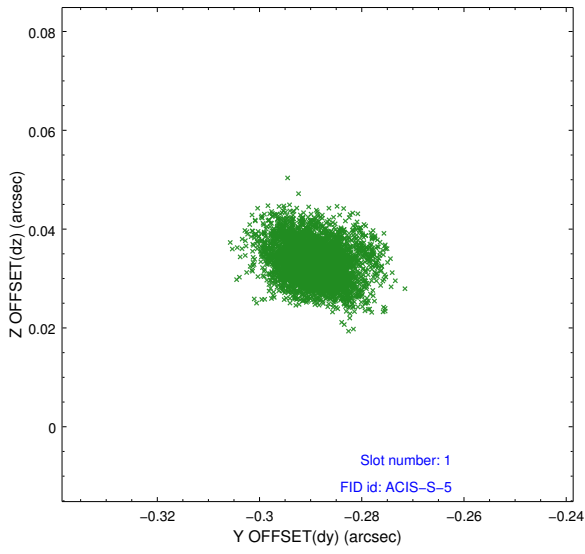


2.5 FID Slots

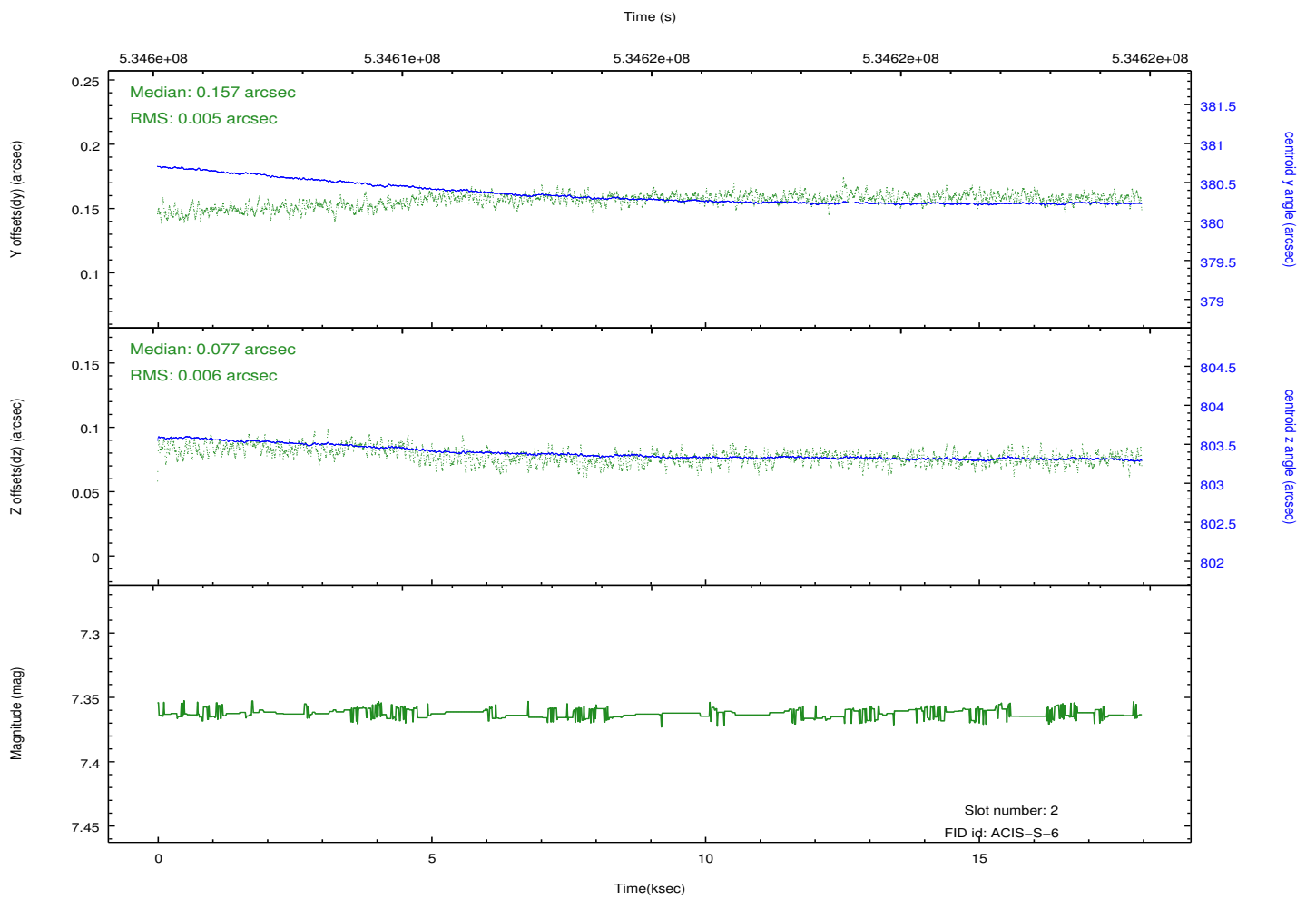
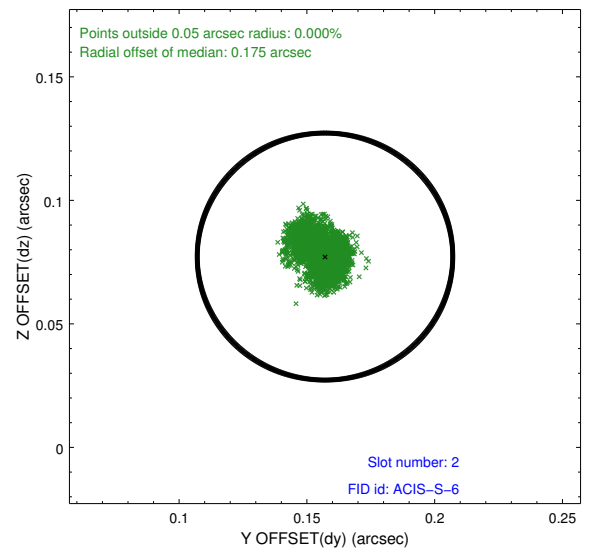
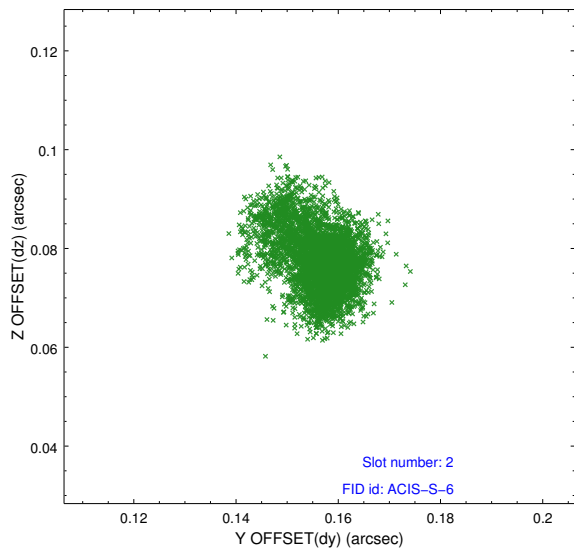
2.5.1 Slot 0



2.5.2 Slot 1



2.5.3 Slot 2



A Summary

A.1 Status

V&V Scientist	Jen Lauer
V&V Date (YYYY-MM-DD)	2014.12.11
V&V Edition	1
V&V Disposition and Status	OK
V&V Charge Time	17.775181326985

A.2 Comments