

# V&V Reference Report

## L2 ASCDS Version : 10.3.1

Observation 17194 - L2 Version 1  
Chandra X-Ray Center

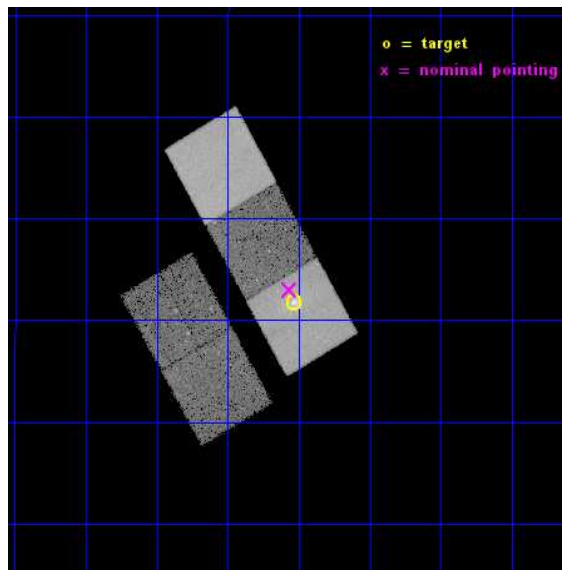
L2 Processing Date : Dec 16 2014

## Contents

<b>1</b>	<b>Front</b>	<b>2</b>
<b>2</b>	<b>OBI</b>	<b>3</b>
2.1	OBI . . . . .	3
2.1.1	Images . . . . .	3
2.1.2	Bias . . . . .	3
2.1.3	Parameters . . . . .	4
2.1.4	Events . . . . .	4
2.2	Compared Parameters . . . . .	5
2.3	Aspect . . . . .	6
2.4	Star Slots . . . . .	9
2.4.1	Slot 3 . . . . .	9
2.4.2	Slot 4 . . . . .	10
2.4.3	Slot 5 . . . . .	11
2.4.4	Slot 6 . . . . .	12
2.4.5	Slot 7 . . . . .	13
2.5	FID Slots . . . . .	14
2.5.1	Slot 0 . . . . .	14
2.5.2	Slot 1 . . . . .	15
2.5.3	Slot 2 . . . . .	16
<b>A</b>	<b>Summary</b>	<b>17</b>
A.1	Status . . . . .	17
A.2	Comments . . . . .	17

# 1 Front

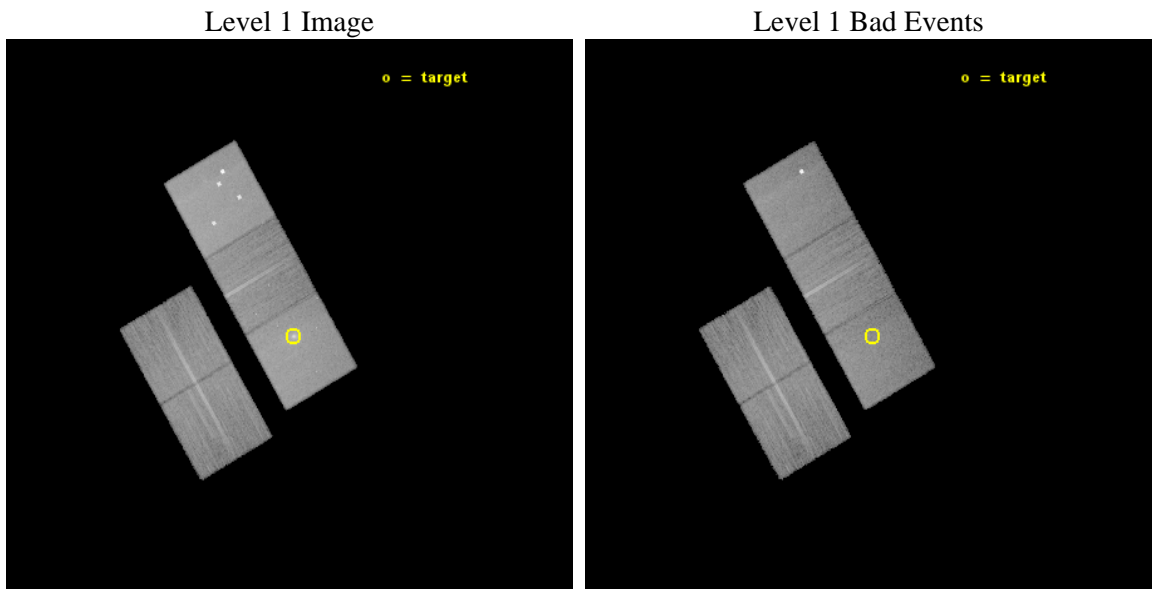
seq_num	801477	Sequence number
obs_id	17194	Observation id
title	X-ray Imaging of a Gas Rich BCG in the RXJ0821.0+0752 Cluster	Prop
observer	Dr. Brian McNamara	Principal investigator
object	RXJ0821.0+0752	Source name
dtcycle	0	&#160
cycle	P	events from which exps? Prim/Second/Both
ra_targ	125.259167	Observer's specified target RA [deg]
dec_targ	7.863667	Observer's specified target Dec [deg]
ra_nom	125.26670779324	Nominal RA [deg]
dec_nom	7.8834783523636	Nominal Dec [deg]
roll_nom	60.155597391616	Nominal Roll [deg]
revision	1	Processing version of data
ontime	29617.211739361	Sum of GTIs [s]
livetime	29230.241064112	Livetime [s]
ontime2	29613.906538904	Sum of GTIs [s]
ontime3	29617.088619351	Sum of GTIs [s]
ontime5	29617.170699358	Sum of GTIs [s]
ontime6	29617.129659355	Sum of GTIs [s]
ontime7	29617.211739361	Sum of GTIs [s]
l2events	267716	Number of level 2 events



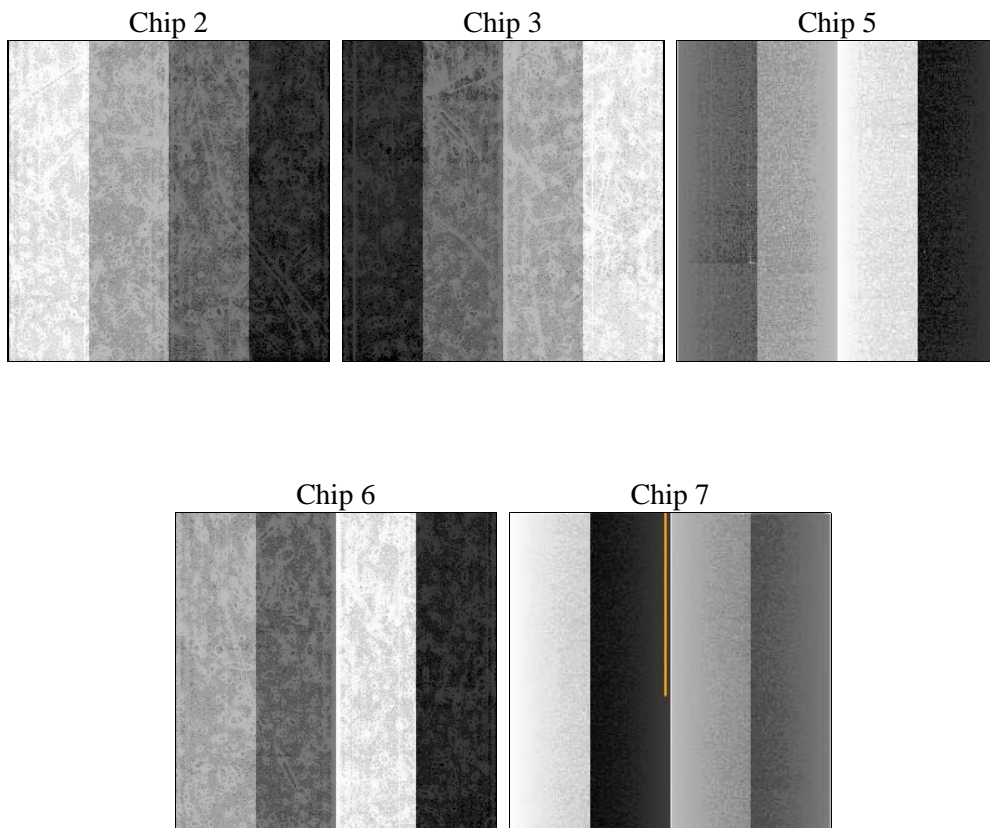
## 2 OBI

### 2.1 OBI

#### 2.1.1 Images



#### 2.1.2 Bias



### 2.1.3 Parameters

obi_num	0	Obi number	sched_exp_time	29552.921000	[s] Scheduled observation exposure time
ascdsver	10.3.1	Processing system revision	ontime	29617.211739361	Sum of GTIs [s]
caldbver	4.6.5	&#160	ontime2	29613.906538904	Sum of GTIs [s]
date	2014-12-16T22:51:12	Date and time of file creation	ontime3	29617.088619351	Sum of GTIs [s]
revision	1	Processing version of data	ontime5	29617.170699358	Sum of GTIs [s]
			ontime6	29617.129659355	Sum of GTIs [s]
			ontime7	29617.211739361	Sum of GTIs [s]
			l1events	960358	Number of level 1 events

### 2.1.4 Events

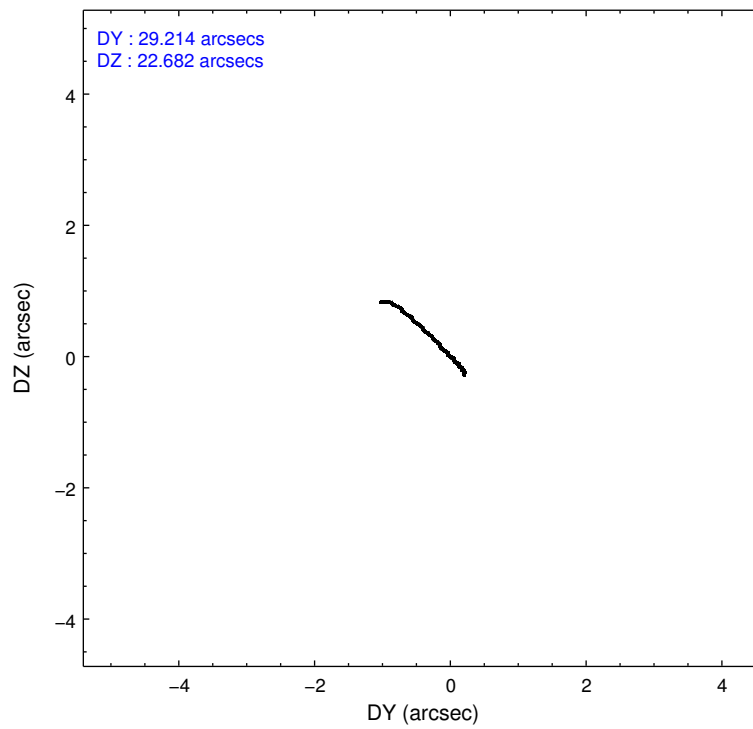
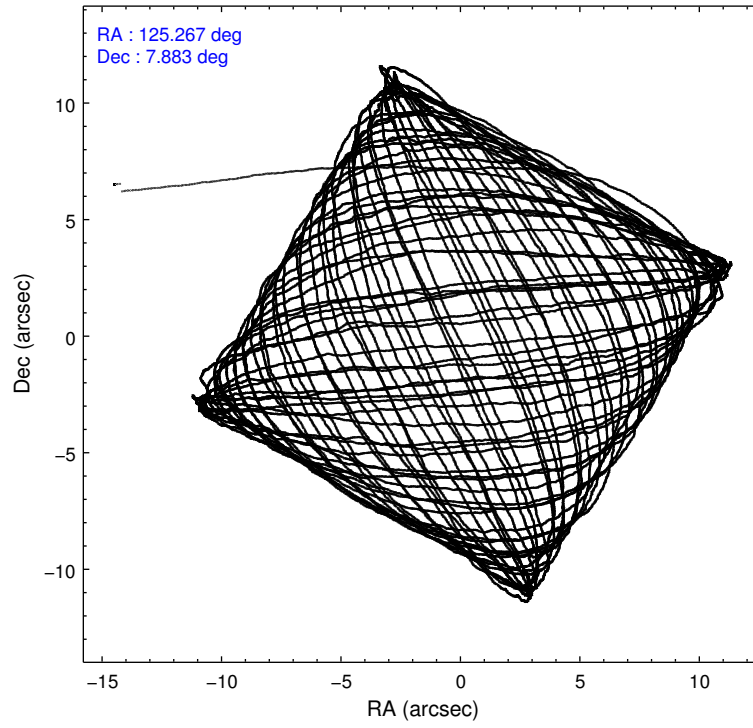
	ccd 2	ccd 3	ccd 5	ccd 6	ccd 7
level 1 events	149891	146195	281106	158375	224791
rejected events	132139	129074	143630	138759	119612
rejected %	88%	88%	51%	87%	53%

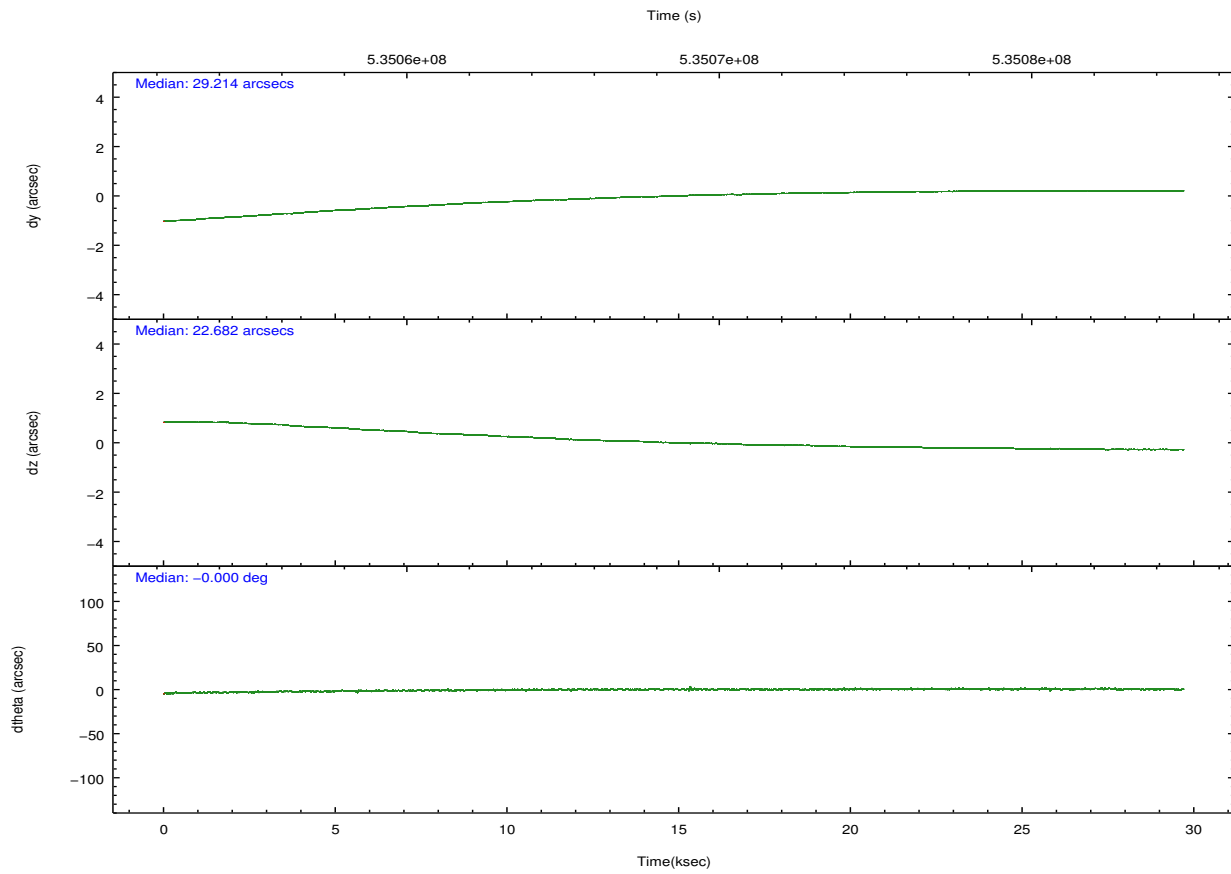
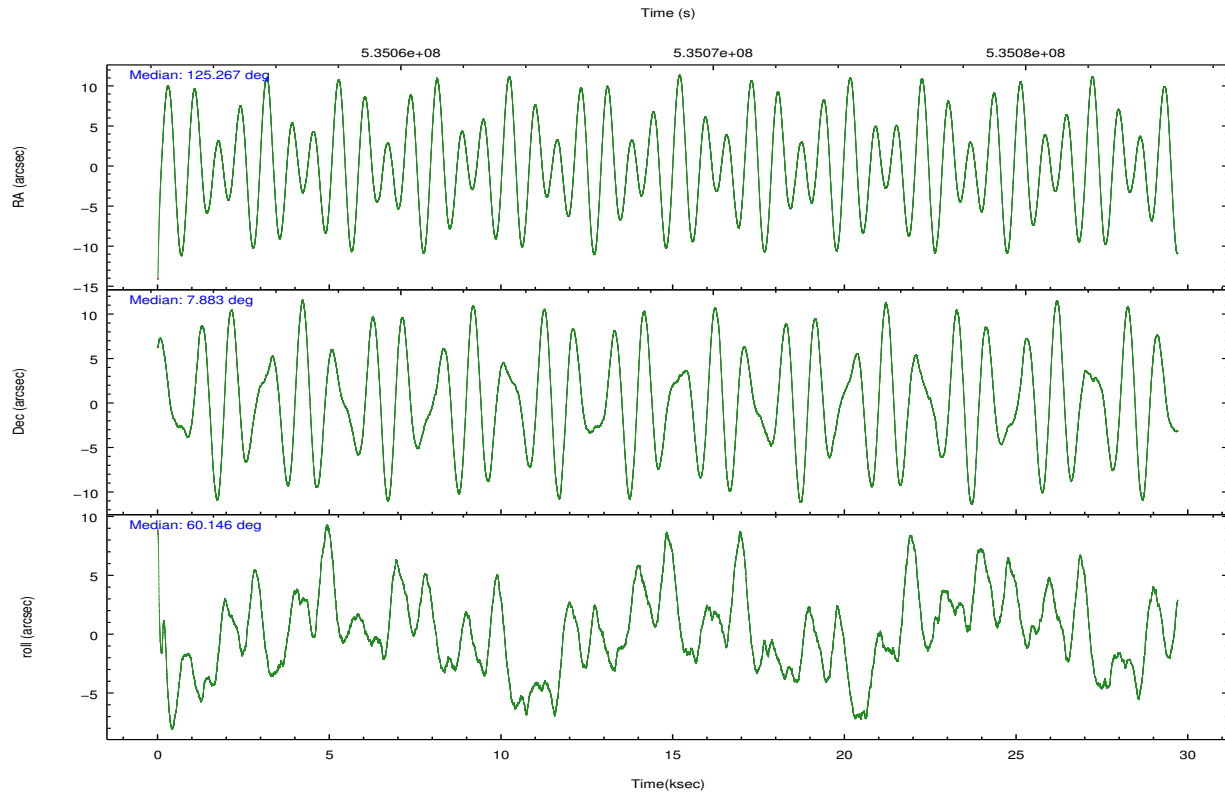
	ccd 2	ccd 3	ccd 5	ccd 6	ccd 7
grade 0 events	6420	5898	23140	7129	11963
	4%	4%	8%	4%	5%
grade 1 events	78	82	434	94	267
	0%	0%	0%	0%	0%
grade 2 events	4285	3888	38885	4338	22592
	2%	2%	13%	2%	10%
grade 3 events	1776	1872	4057	1954	9187
	1%	1%	1%	1%	4%
grade 4 events	1814	1832	3866	1912	9200
	1%	1%	1%	1%	4%
grade 5 events	6889	8030	18819	8156	21810
	4%	5%	6%	5%	9%
grade 6 events	3462	3635	67556	4288	52266
	2%	2%	24%	2%	23%
grade 7 events	125167	120958	124349	130504	97506
	83%	82%	44%	82%	43%

## 2.2 Compared Parameters

Parameter	Planned	Actual	Parameter	Planned	Actual
Instrument	ACIS	ACIS	Obspar format version number	7	7
Detector	ACIS-23567	ACIS-23567	Obspar file type	PREDICTED	ACTUAL
Grating	NONE	NONE	Obspar update status	NONE	UPDATED
Data mode	VFAINT	VFAINT	CCD I0 on	N	N
Observation mode	POINTING	POINTING	CCD I1 on	N	N
[deg] Pointing RA	125.267145	125.2667077932382	CCD I2 on	O1	Y
[deg] Pointing Dec	7.856024	7.883478352363591	CCD I3 on	O2	Y
[deg] Pointing Roll	59.998903	60.15559739161572	CCD S0 on	N	N
[mm] SIM focus pos	-0.684267	-0.6828225247311905	CCD S1 on	Y	Y
[mm] SIM defocus	0	0.001444936568705701	CCD S2 on	Y	Y
[mm] SIM translation stage pos	-190.132523	-190.1400660498719	CCD S3 on	Y	Y
[mm] SIM translation stage offset	0	0.00754346686406393	CCD S4 on	N	N
[s] Observation start time (MET)	535053850.184000	535052849.02367	CCD S5 on	N	N
Observation start date	2014-12-15T18:03:03	2014-12-15T17:47:29	Number of optional ACIS chips dropped	0	0
[s] Observation end time (MET)	535083402.184000	535083628.23789	On-chip summing requested	N	N
Observation end date	2014-12-16T02:15:35	2014-12-16T02:20:28	Subarray requested	NONE	NONE
Read mode	TIMED	TIMED	Alternating exposures requested	N	N
			[s] Primary exposure time	0.000000	3.1

## 2.3 Aspect



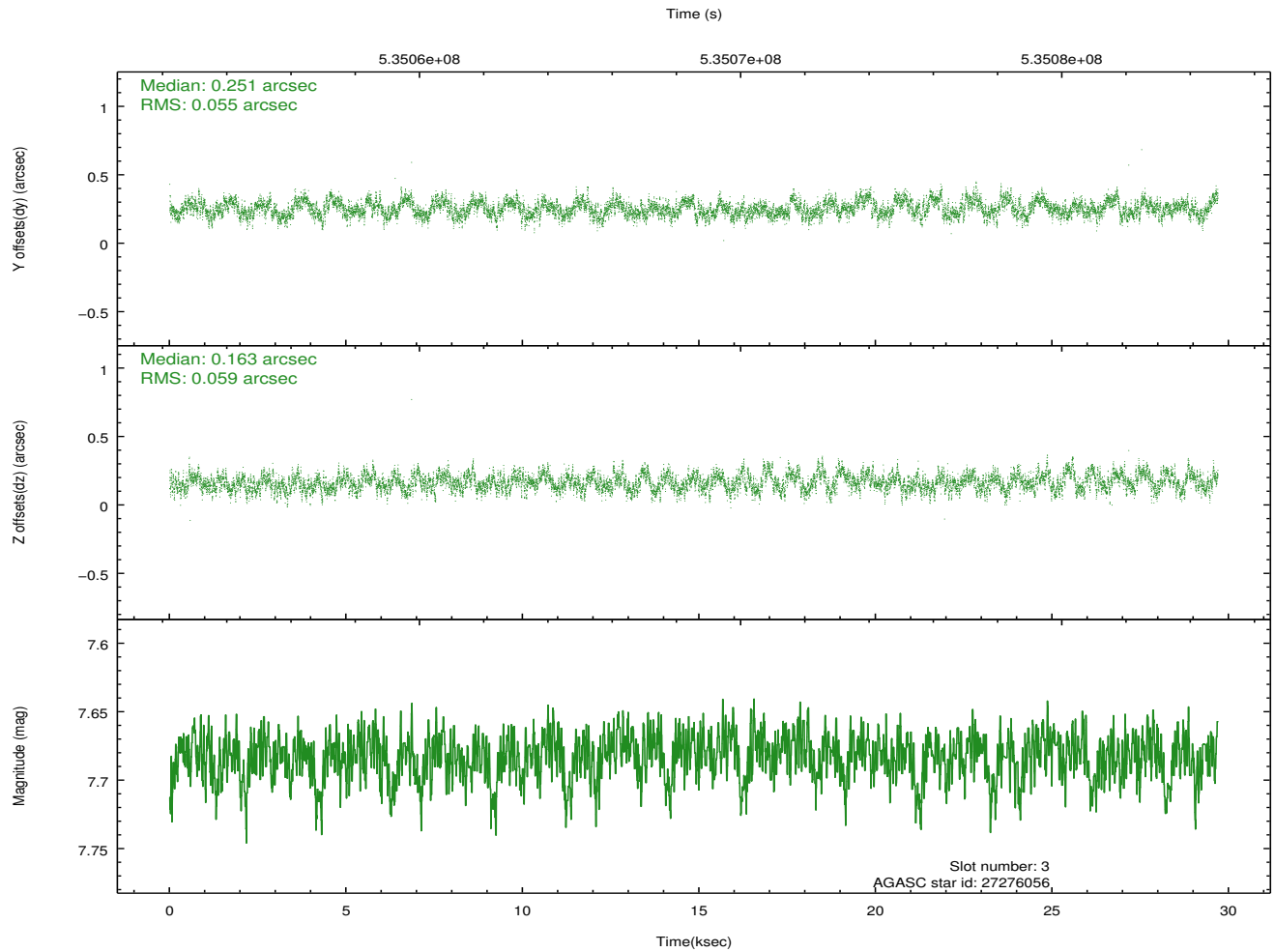
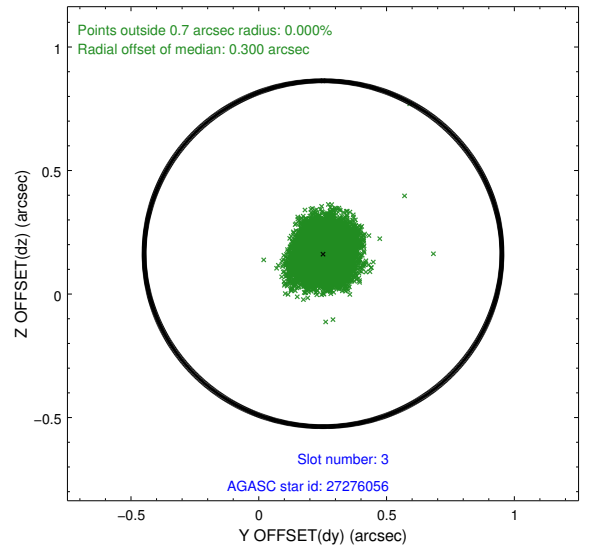
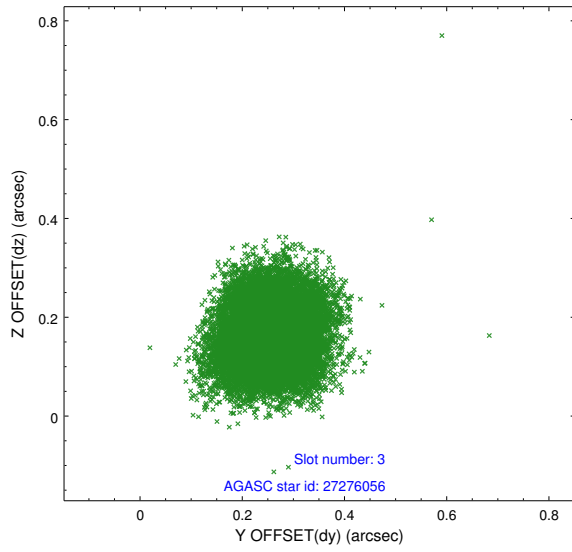


### Slot Statistics

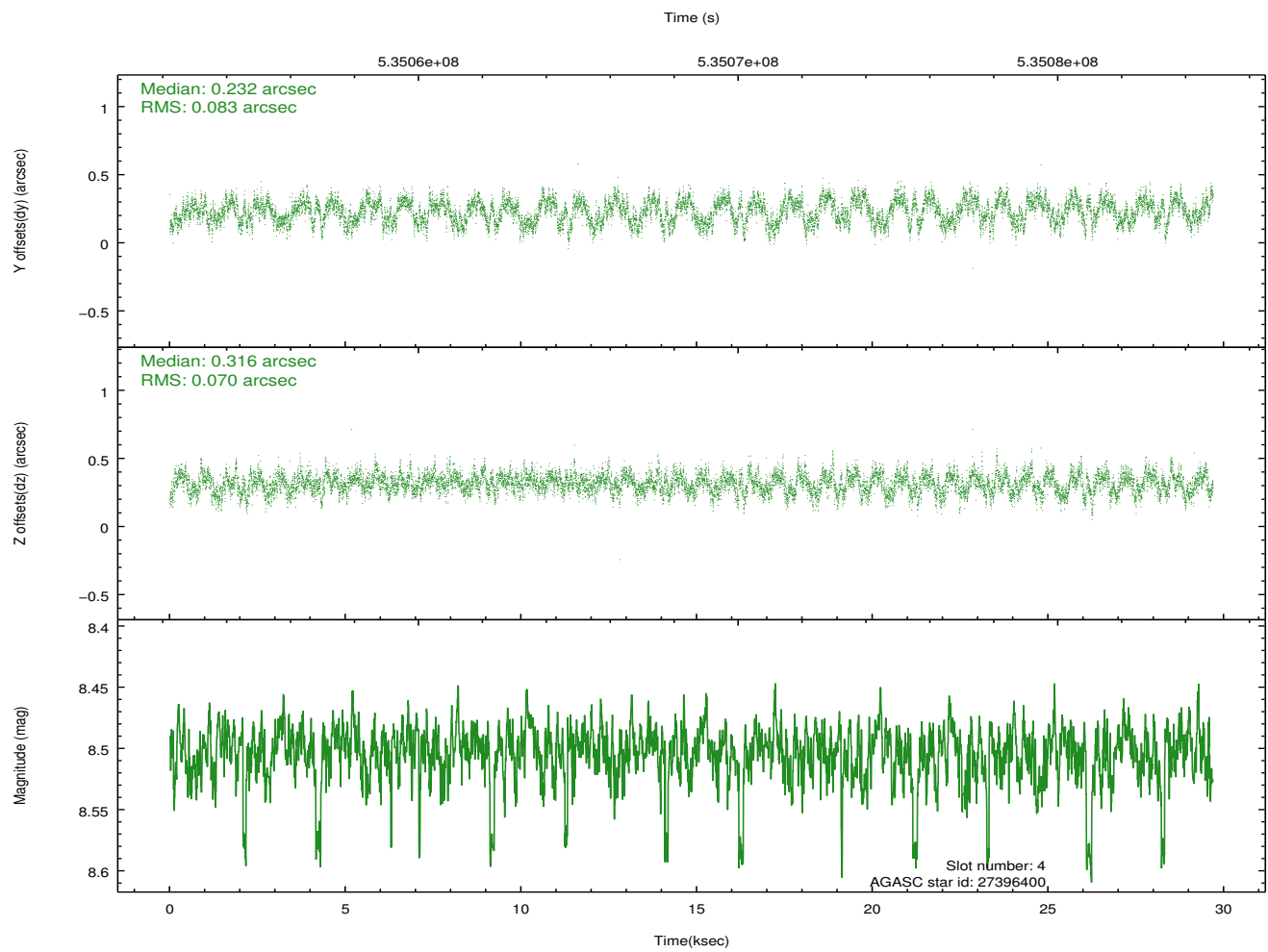
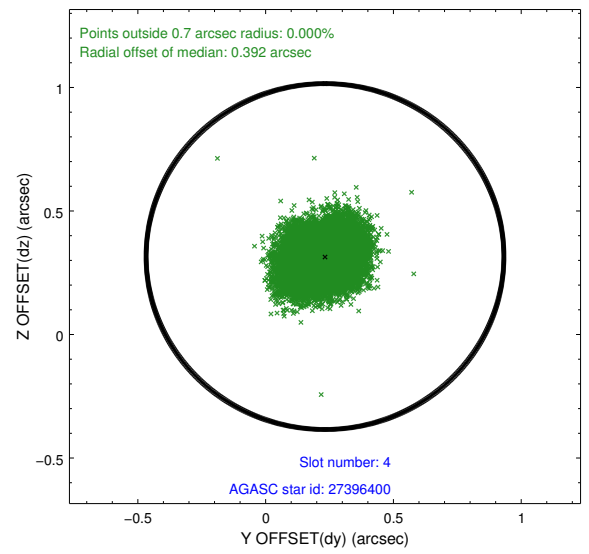
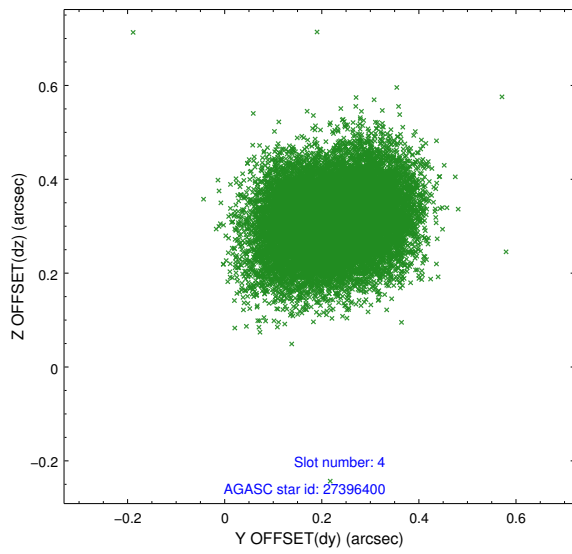
slot	status	used	id	mag	n_pts	med_dy	med_dz	dr1	dr2	ra	dec	mean_y	mean_z
0	FID		ACIS-S-2	6.98	7243	-0.280	-0.169	0.010	0.027	0.000000	0.000000	-782.81	-1744.52
1	FID		ACIS-S-4	7.07	7242	0.302	0.173	0.009	0.023	0.000000	0.000000	2131.13	164.04
2	FID		ACIS-S-6	7.22	7243	-0.050	0.004	0.010	0.019	0.000000	0.000000	379.65	801.47
3	GUIDE	used	27276056	7.68	14485	0.251	0.163	0.086	0.135	125.347486	7.386536	-1319.49	-1093.41
4	GUIDE	used	27396400	8.50	14481	0.232	0.316	0.117	0.182	125.683769	7.499330	-367.10	-1929.17
5	GUIDE	used	104214016	9.22	14479	-0.032	-0.043	0.135	0.227	125.978575	8.019253	1779.51	-1901.20
6	GUIDE	used	104217328	8.42	14483	-0.012	0.099	0.096	0.154	125.839356	7.722415	605.62	-2007.25
7	GUIDE	used	104202616	9.47	14260	-0.450	-0.542	0.154	0.238	125.143469	8.504755	1802.20	1549.02

## 2.4 Star Slots

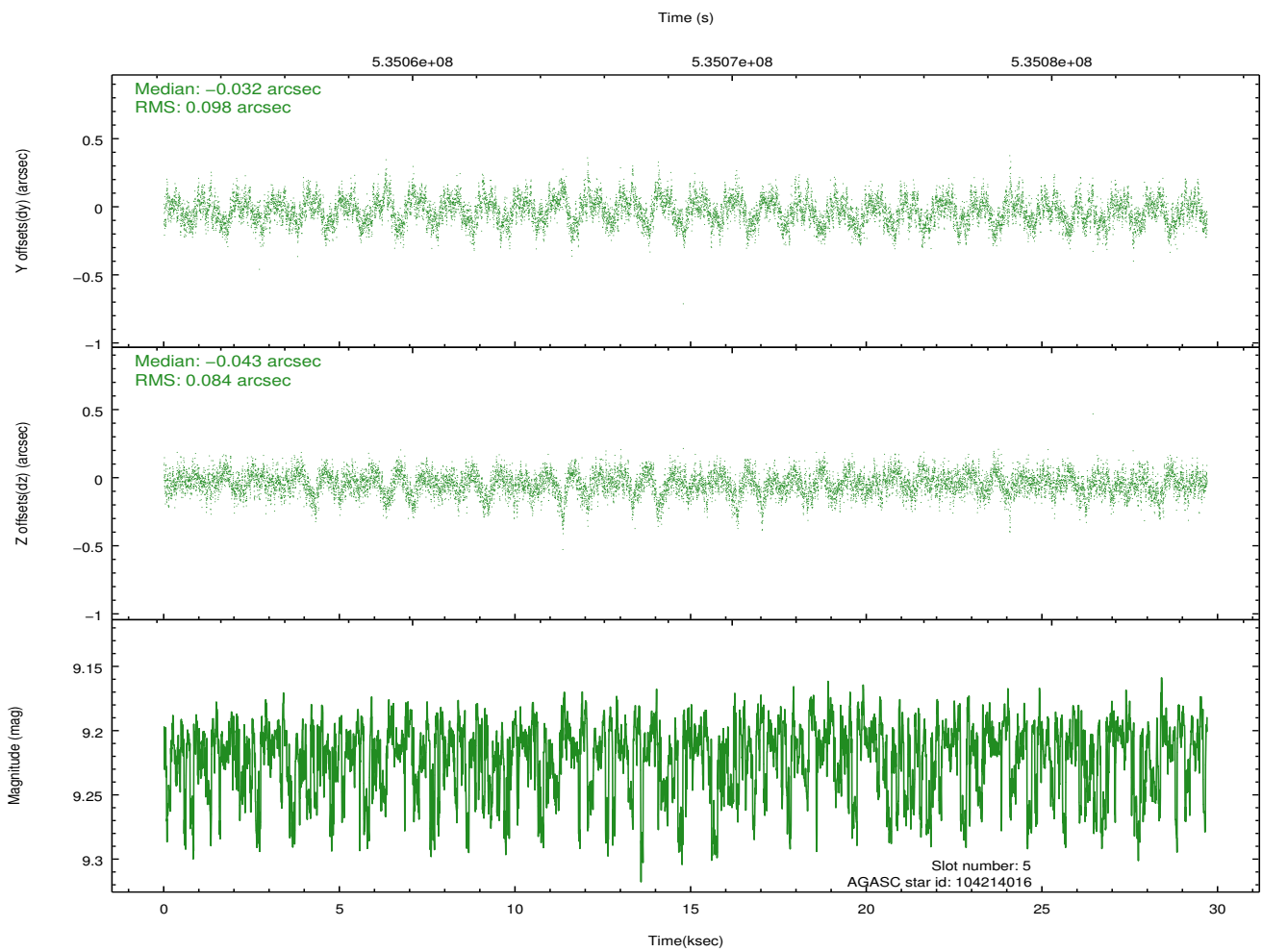
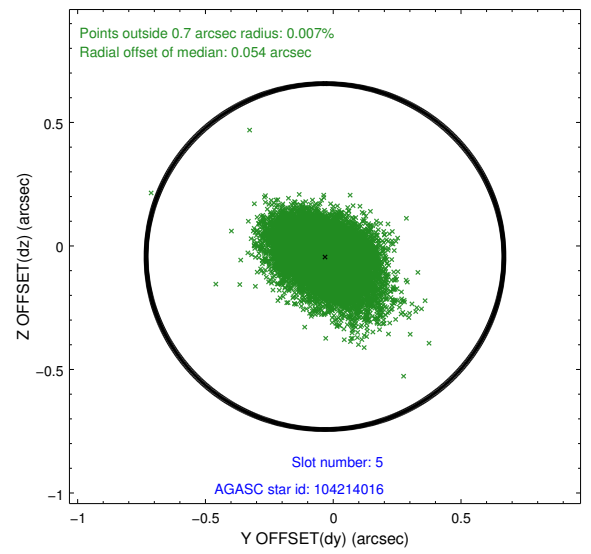
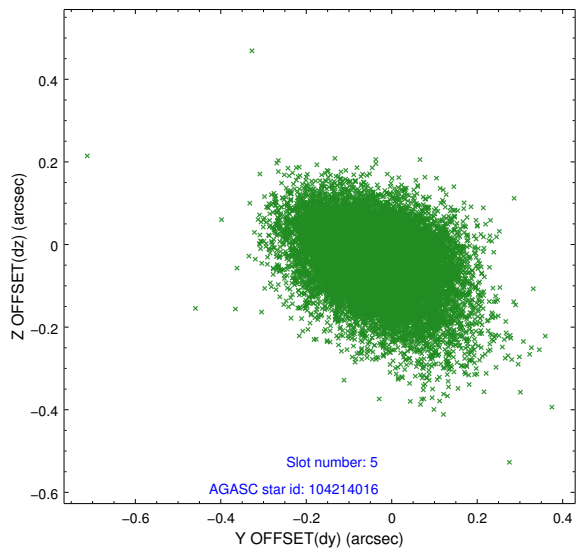
### 2.4.1 Slot 3



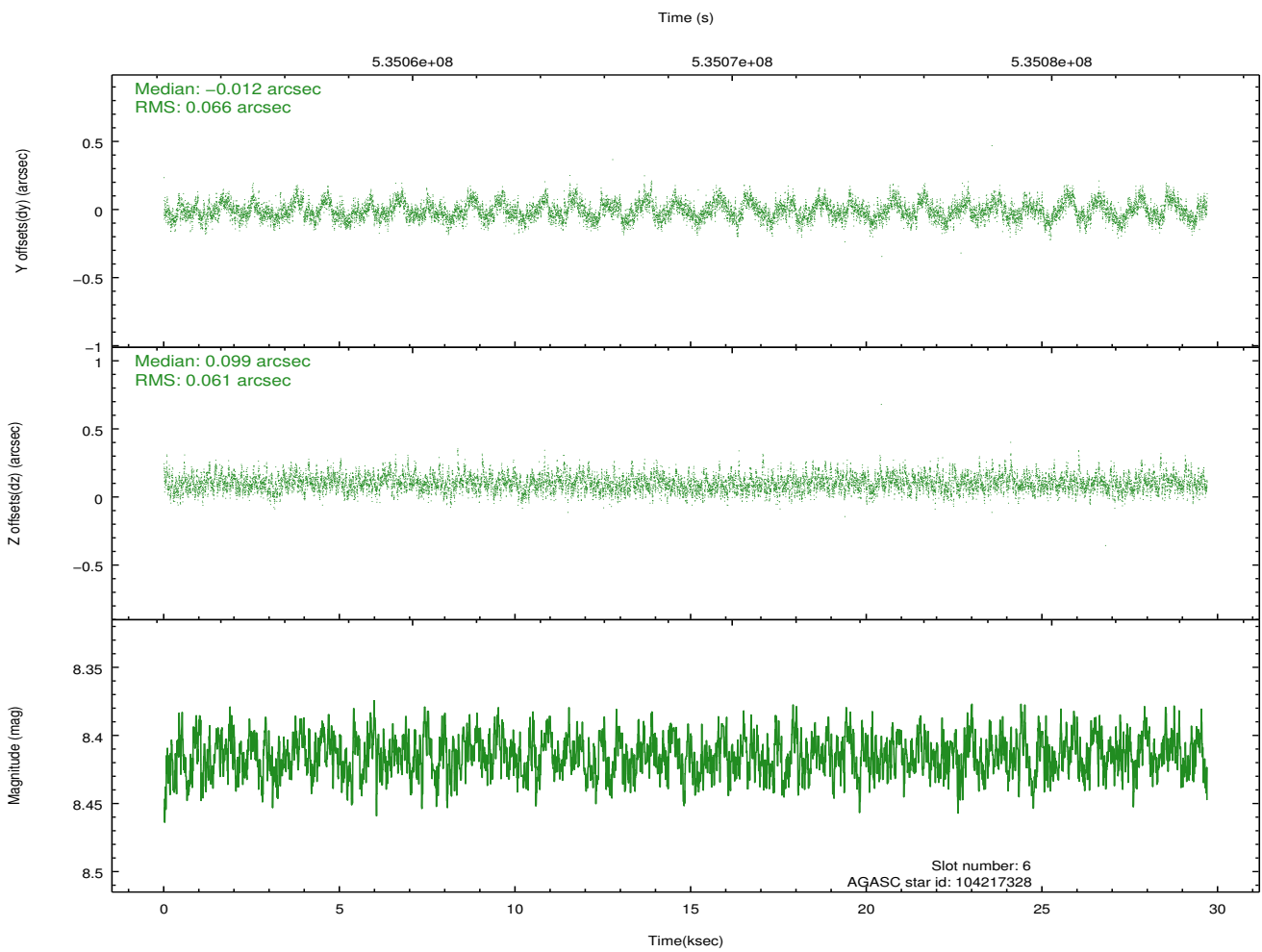
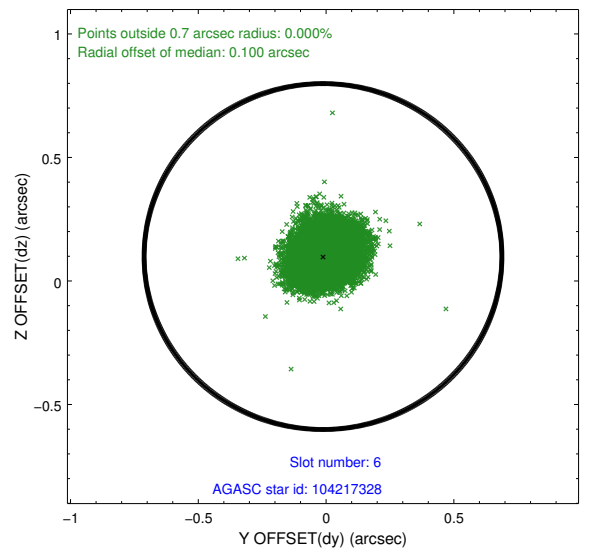
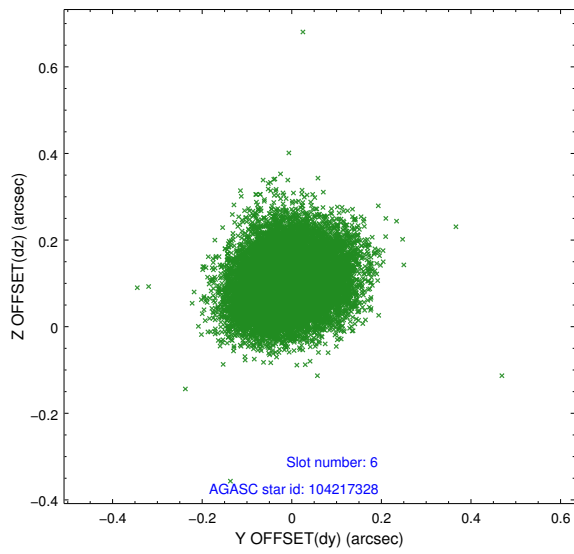
## 2.4.2 Slot 4



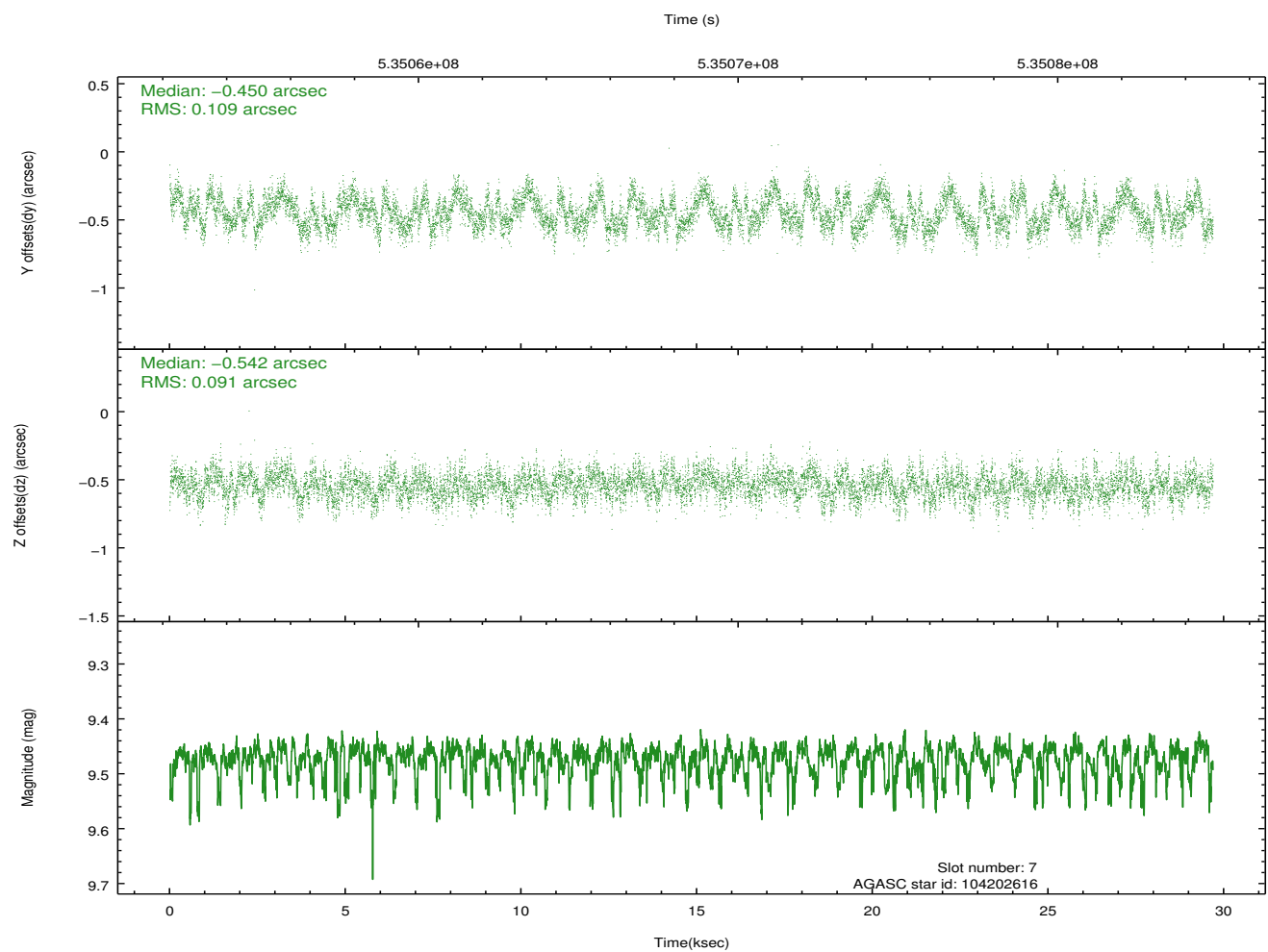
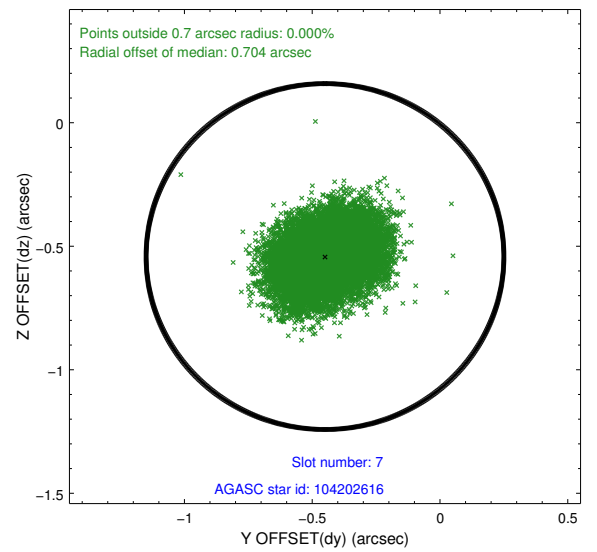
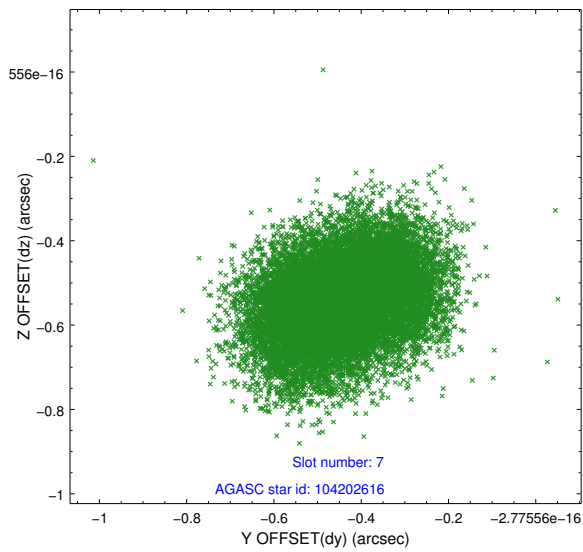
### 2.4.3 Slot 5



## 2.4.4 Slot 6

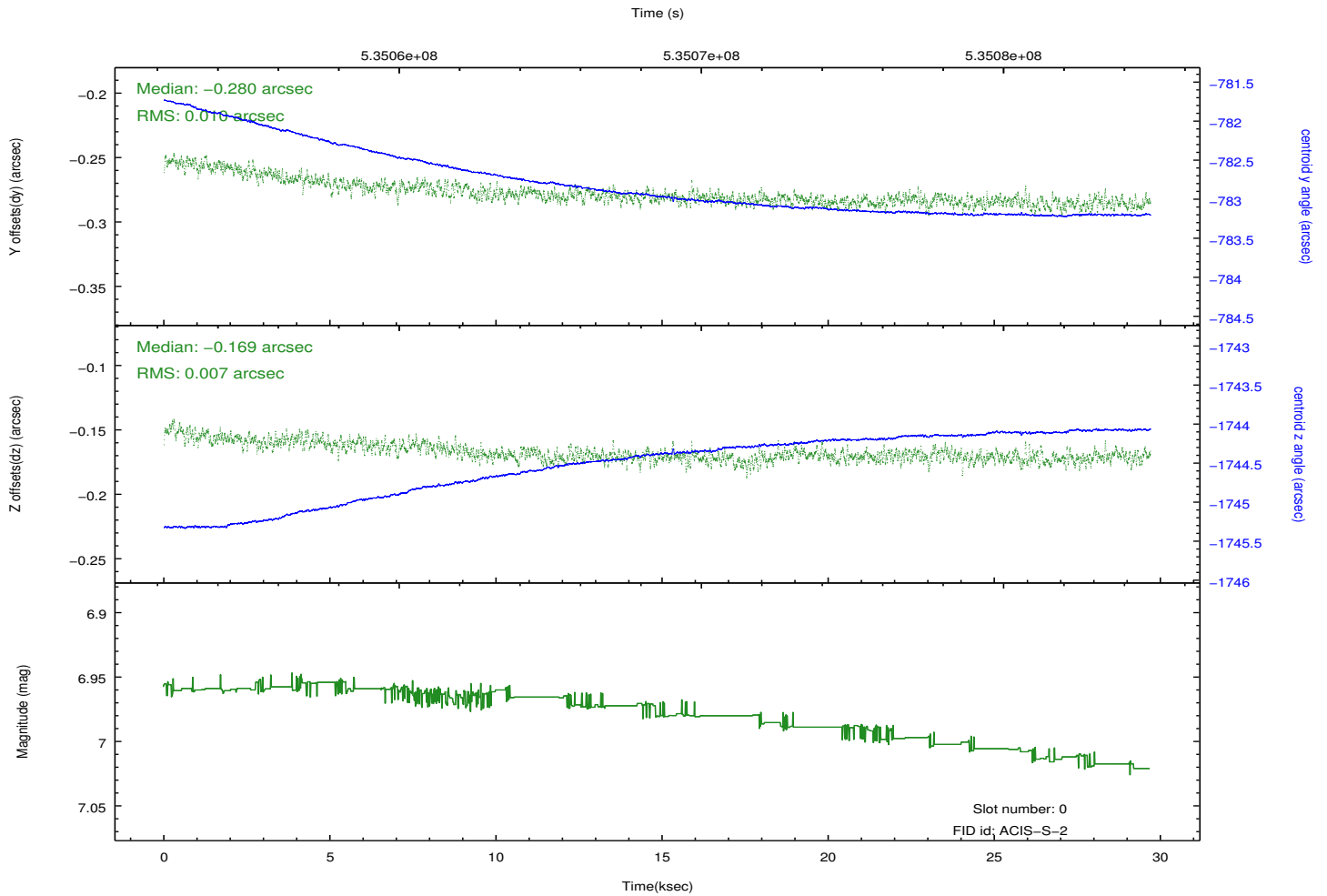
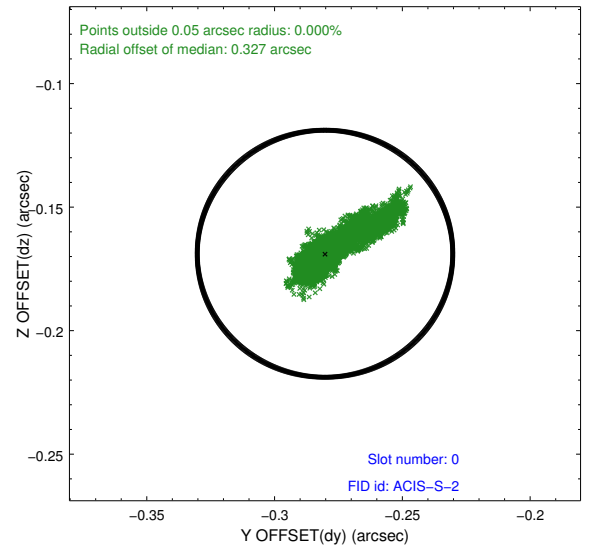
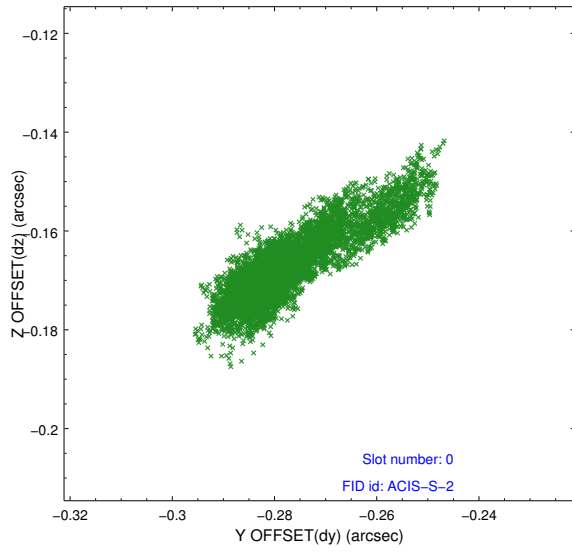


## 2.4.5 Slot 7

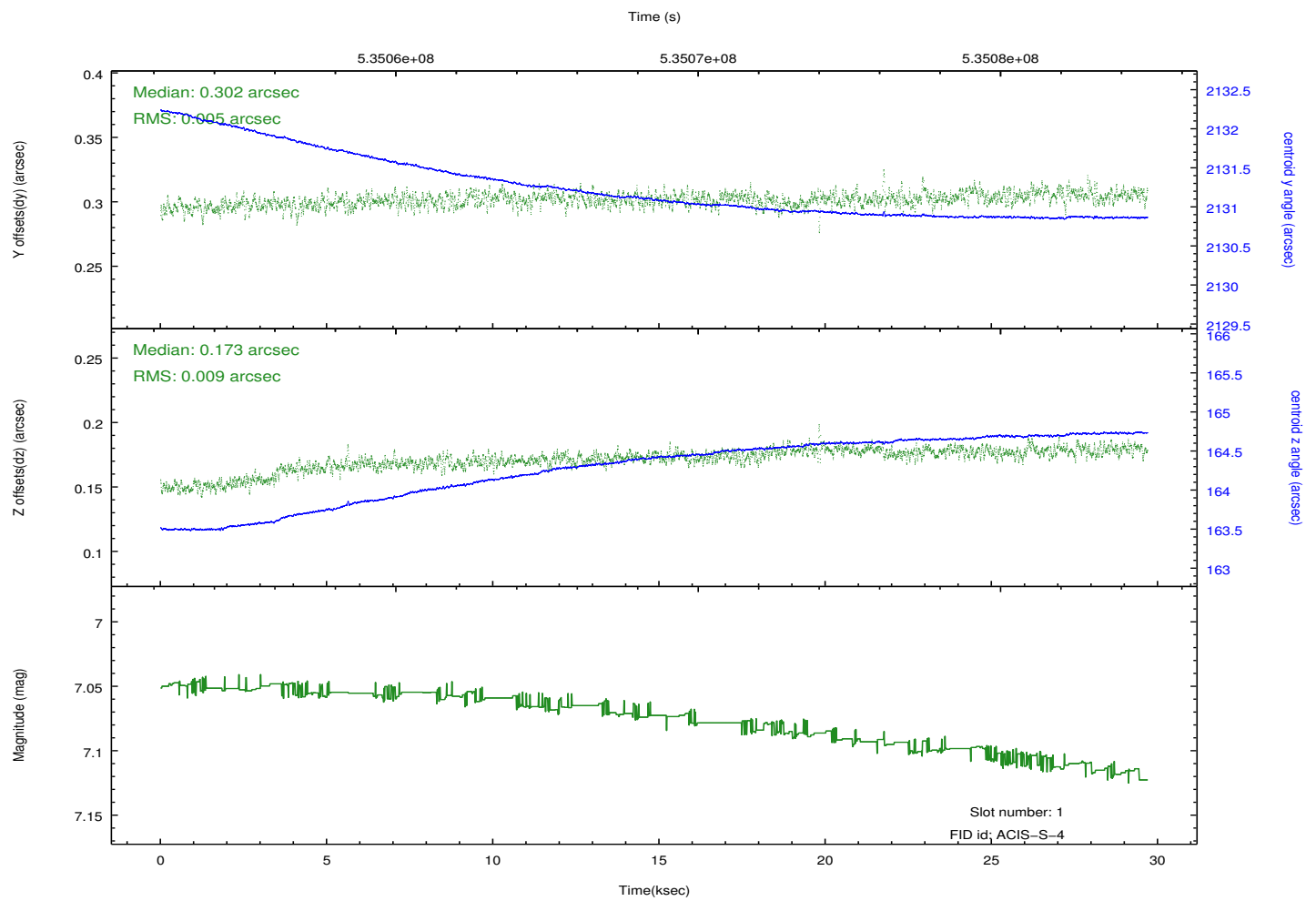
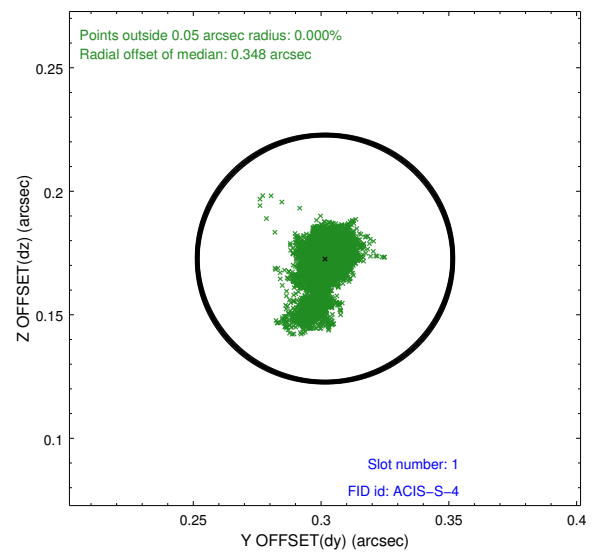
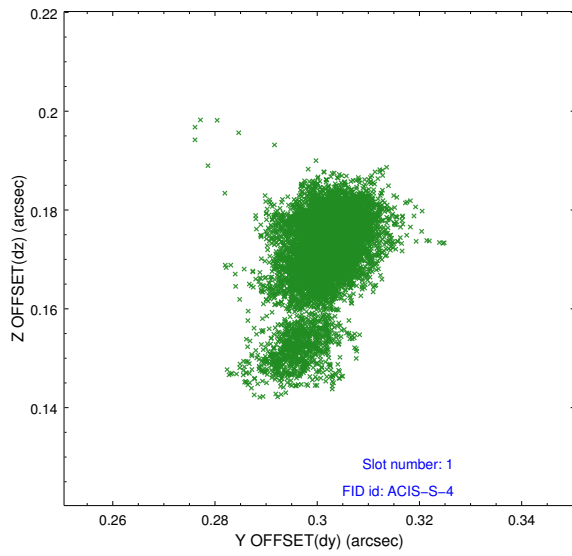


## 2.5 FID Slots

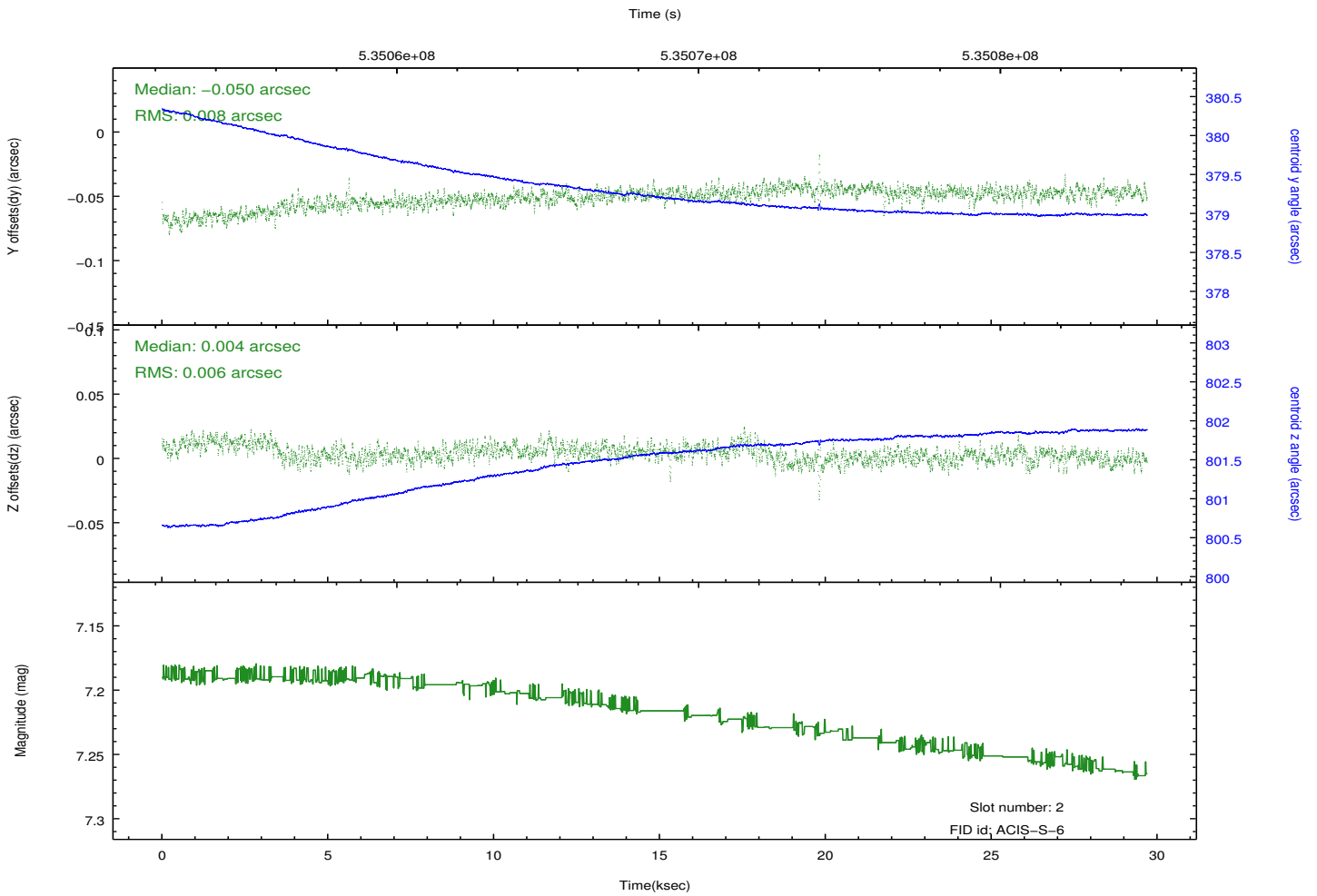
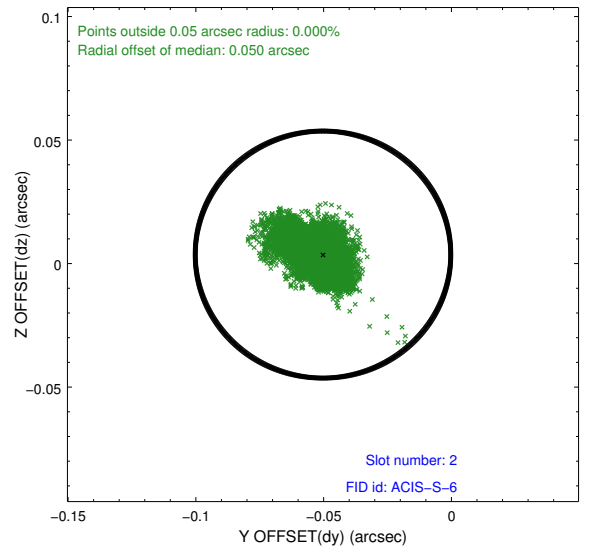
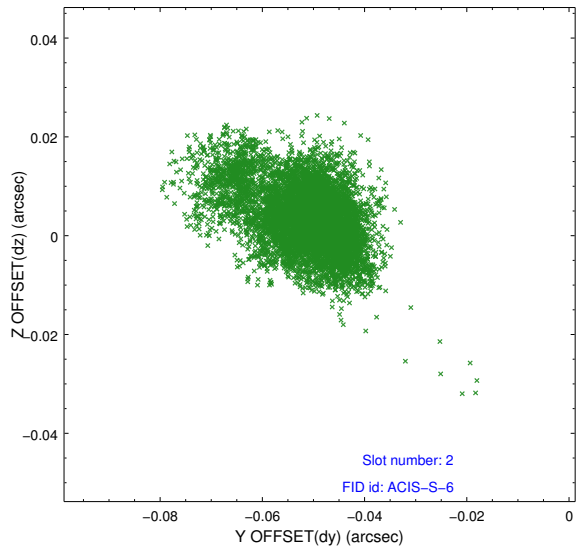
### 2.5.1 Slot 0



## 2.5.2 Slot 1



### 2.5.3 Slot 2



# A Summary

## A.1 Status

V&V Scientist	Joy Nichols
V&V Date (YYYY-MM-DD)	2014.12.17
V&V Edition	1
V&V Disposition and Status	OK
V&V Charge Time	29.617211739361

## A.2 Comments