

# V&V Reference Report

## L2 ASCDS Version : 8.4.5

Observation 1724 - L2 Version 4  
Chandra X-Ray Center

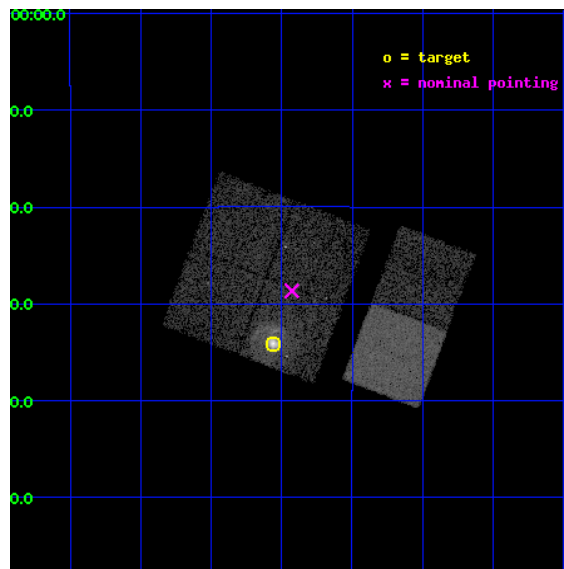
L2 Processing Date : Aug 28 2012

## Contents

<b>1</b>	<b>Front</b>	<b>2</b>
<b>2</b>	<b>OBI</b>	<b>3</b>
2.1	OBI . . . . .	3
2.1.1	Images . . . . .	3
2.1.2	Bias . . . . .	3
2.1.3	Parameters . . . . .	4
2.1.4	Events . . . . .	4
2.2	Compared Parameters . . . . .	5
2.3	Aspect . . . . .	6
2.4	Star Slots . . . . .	9
2.4.1	Slot 3 . . . . .	9
2.4.2	Slot 4 . . . . .	10
2.4.3	Slot 5 . . . . .	11
2.4.4	Slot 6 . . . . .	12
2.4.5	Slot 7 . . . . .	13
2.5	FID Slots . . . . .	14
2.5.1	Slot 0 . . . . .	14
2.5.2	Slot 1 . . . . .	15
2.5.3	Slot 2 . . . . .	16
<b>A</b>	<b>Summary</b>	<b>17</b>
A.1	Status . . . . .	17
A.2	Comments . . . . .	17

# 1 Front

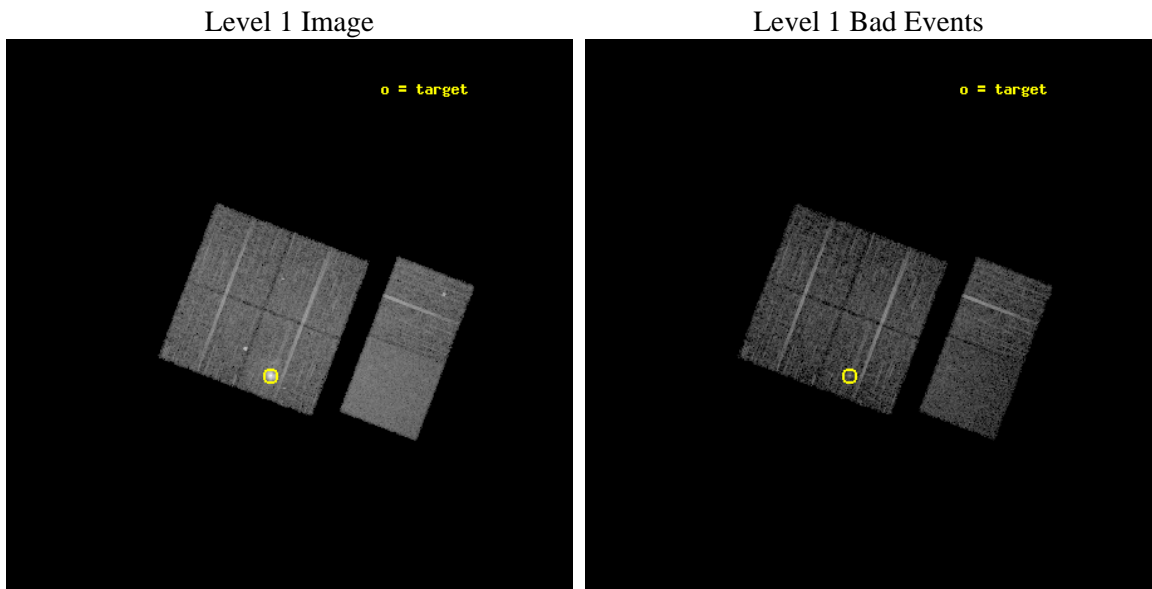
seq_num	590177	Sequence number
obs_id	1724	Observation id
title	HRC RESPONSE TO CONTINUUM SOURCE.	Proposal title
observer	Dr. CXC Calibration	Principal investigator
object	G21.5-0.9 [Chip I3, T=120, Offsets=-5,0,2]	Source name
dtcycle	0	&#160
cycle	P	events from which exps? Prim/Second/Both
ra_targ	278.389583	Observer's specified target RA [deg]
dec_targ	-10.568528	Observer's specified target Dec [deg]
ra_nom	278.35686408848	Nominal RA [deg]
dec_nom	-10.477739144322	Nominal Dec [deg]
roll_nom	110.85607841415	Nominal Roll [deg]
revision	4	Processing version of data
ontime	7664.0000071228	Sum of GTIs [s]
livetime	7566.9538243258	Livetime [s]
ontime0	7664.0000071228	Sum of GTIs [s]
ontime1	7664.0000071228	Sum of GTIs [s]
ontime2	7664.0000071228	Sum of GTIs [s]
ontime3	7664.0000071228	Sum of GTIs [s]
ontime6	7664.0000071228	Sum of GTIs [s]
ontime7	7664.0000071228	Sum of GTIs [s]
l2events	78704	Number of level 2 events



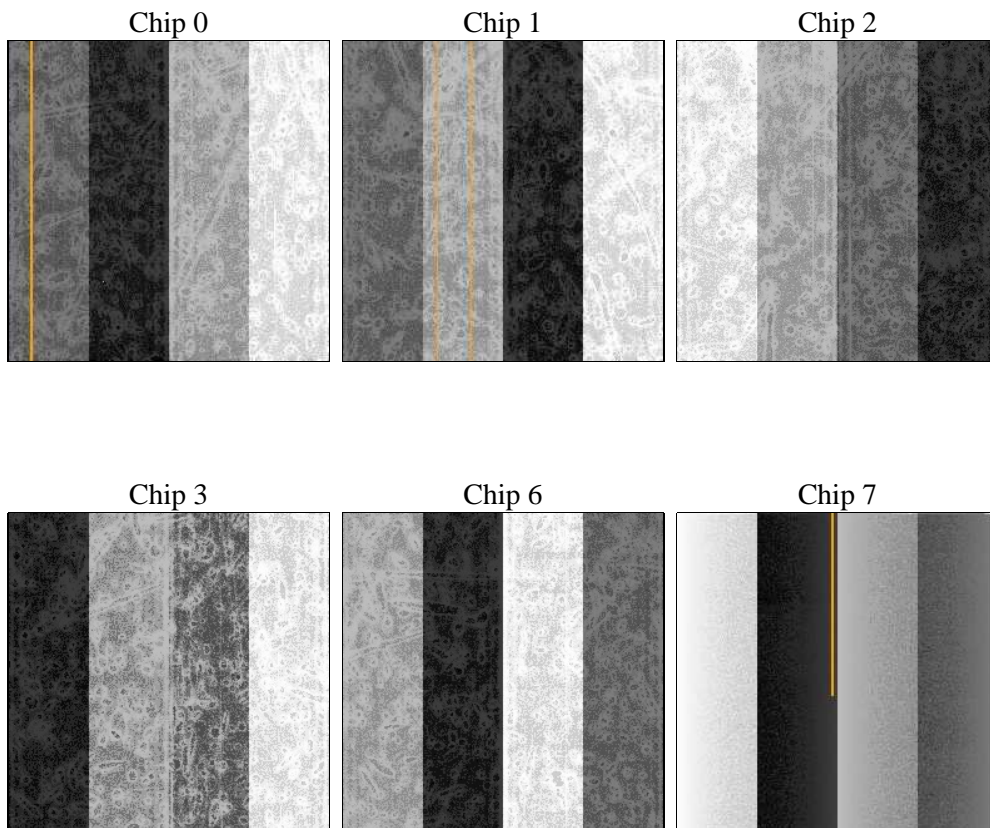
## 2 OBI

### 2.1 OBI

#### 2.1.1 Images



#### 2.1.2 Bias



### 2.1.3 Parameters

obi_num	0	Obi number	sched_exp_time	8000.000000	[s] Scheduled observation exposure time
ascdsver	8.4.5	Processing system revision	ontime	7664.0000071228	Sum of GTIs [s]
caldbver	4.5.1.1	&#160	ontime0	7664.0000071228	Sum of GTIs [s]
date	2012-08-28T04:36:28	Date and time of file creation	ontime1	7664.0000071228	Sum of GTIs [s]
revision	4	Processing version of data	ontime2	7664.0000071228	Sum of GTIs [s]
			ontime3	7664.0000071228	Sum of GTIs [s]
			ontime6	7664.0000071228	Sum of GTIs [s]
			ontime7	7664.0000071228	Sum of GTIs [s]
			l1events	323157	Number of level 1 events

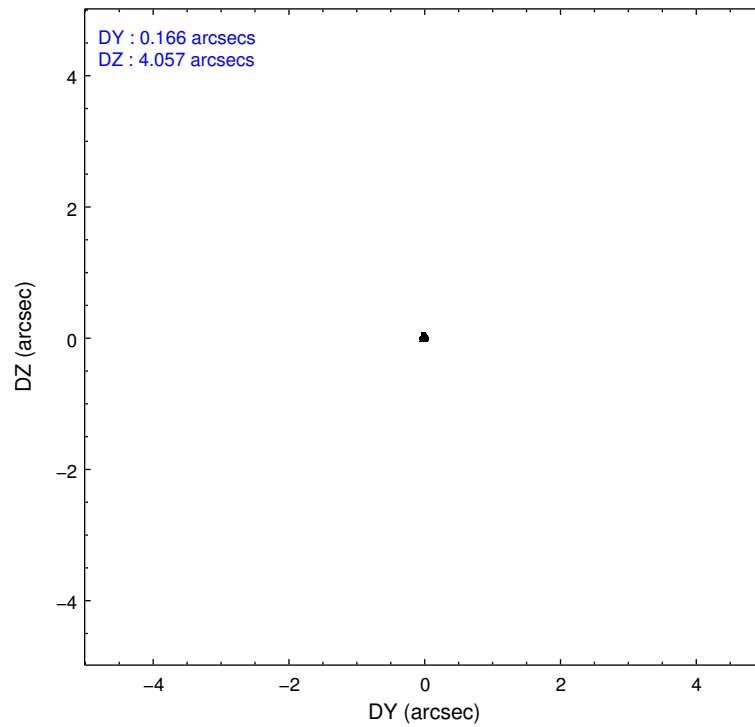
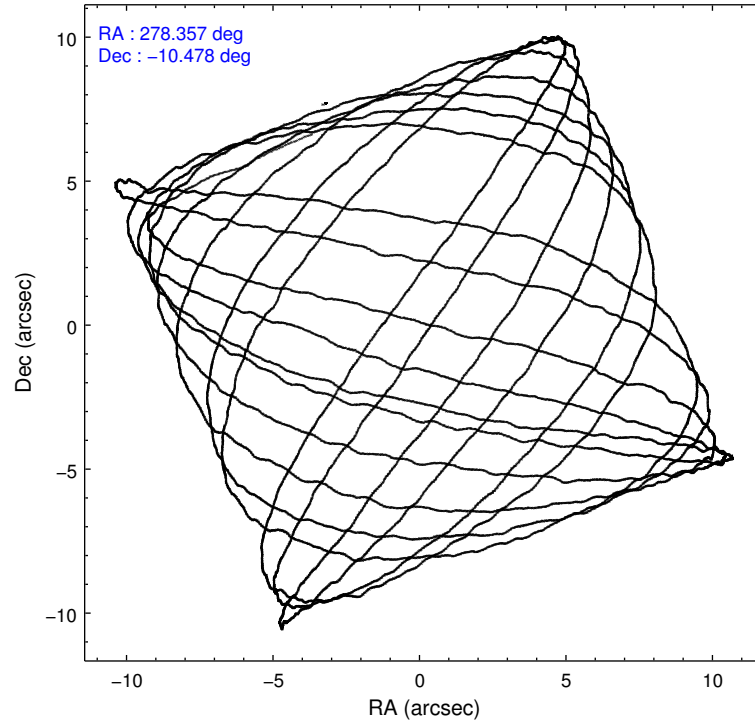
### 2.1.4 Events

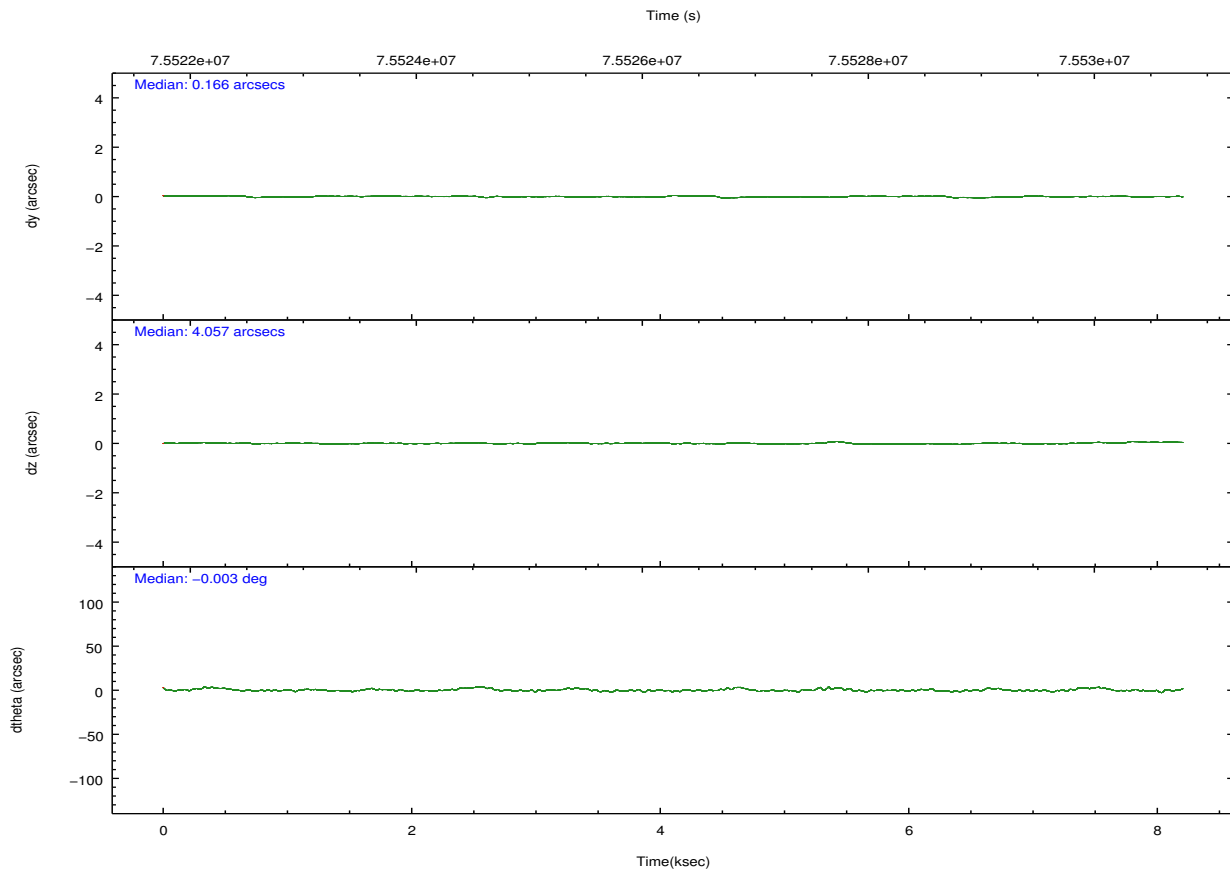
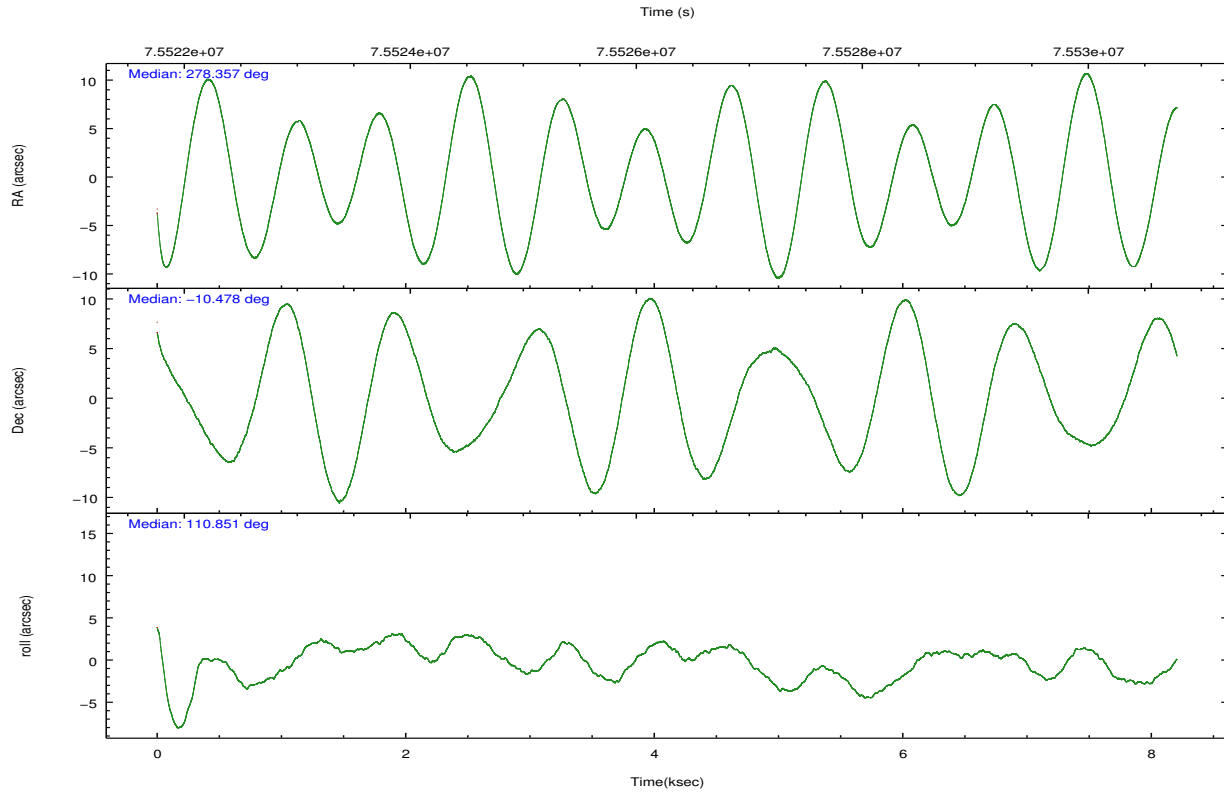
	ccd 0	ccd 1	ccd 2	ccd 3	ccd 6	ccd 7		ccd 0	ccd 1	ccd 2	ccd 3	ccd 6	ccd 7
level 1 events	44623	47178	49967	70501	51532	59356	grade 0 events	3269	4686	3336	19993	3732	3091
rejected events	37884	38752	43291	41005	44285	31780		7%	9%	6%	28%	7%	5%
rejected %	84%	82%	86%	58%	85%	53%	grade 1 events	22	34	32	158	36	38
								0%	0%	0%	0%	0%	0%
							grade 2 events	1411	1508	1361	4240	1306	5499
								3%	3%	2%	6%	2%	9%
							grade 3 events	552	599	516	1578	571	2555
								1%	1%	1%	2%	1%	4%
							grade 4 events	522	586	507	1535	581	2541
								1%	1%	1%	2%	1%	4%
							grade 5 events	1536	1617	1408	1749	1819	5433
								3%	3%	2%	2%	3%	9%
							grade 6 events	989	1053	956	2163	1059	13896
								2%	2%	1%	3%	2%	23%
							grade 7 events	36322	37095	41851	39085	42428	26303
								81%	78%	83%	55%	82%	44%

## 2.2 Compared Parameters

Parameter	Planned	Actual	Parameter	Planned	Actual
Instrument	ACIS	ACIS	Obspar format version number	7	7
Detector	ACIS-012367	ACIS-012367	Obspar file type	PREDICTED	ACTUAL
Grating	NONE	NONE	Obspar update status	NONE	UPDATED
Data mode	FAINT	FAINT	Number of optional ACIS chips dropped	0	0
Observation mode	POINTING	POINTING	On-chip summing requested	N	N
[deg] Pointing RA	278.378545	278.3568640884777	Subarray requested	NONE	NONE
[deg] Pointing Dec	-10.495315	-10.47773914432205	Alternating exposures requested	N	N
[deg] Pointing Roll	110.651324	110.856078414149	[s] Primary exposure time	0.000000	3.2
[mm] SIM focus pos	-0.782348	-0.7809083437167272			
[mm] SIM defocus	0	0.001439871863259334			
[mm] SIM translation stage pos	-226.272463	-226.2707769332891			
[mm] SIM translation stage offset	-7.32	-7.321676069640603			
[s] Observation start time (MET)	75522375.184000	75521986.66914099			
Observation start date	2000-05-24T02:25:11	2000-05-24T02:19:46			
[s] Observation end time (MET)	75530375.184000	75530509.03195401			
Observation end date	2000-05-24T04:38:31	2000-05-24T04:41:49			
Read mode	TIMED	TIMED			

## 2.3 Aspect



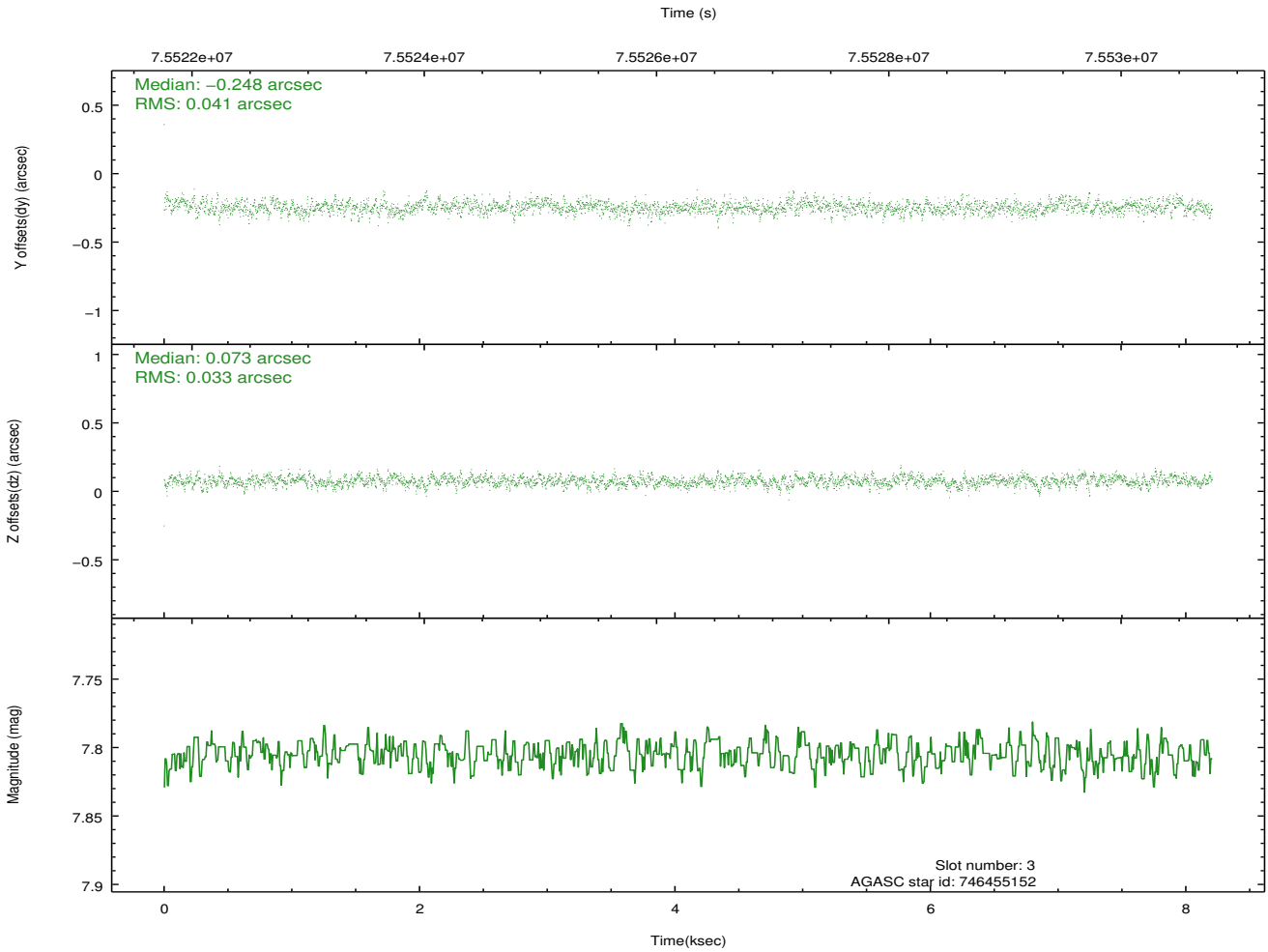
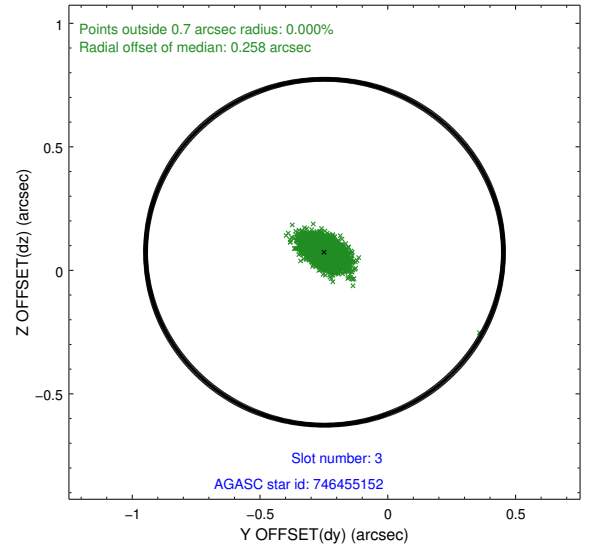
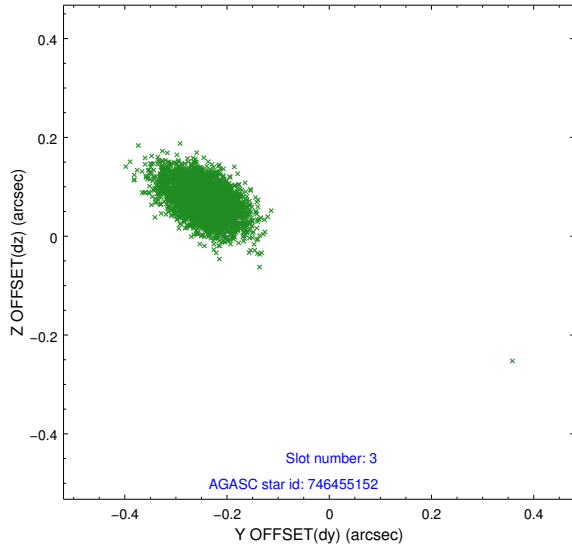


### Slot Statistics

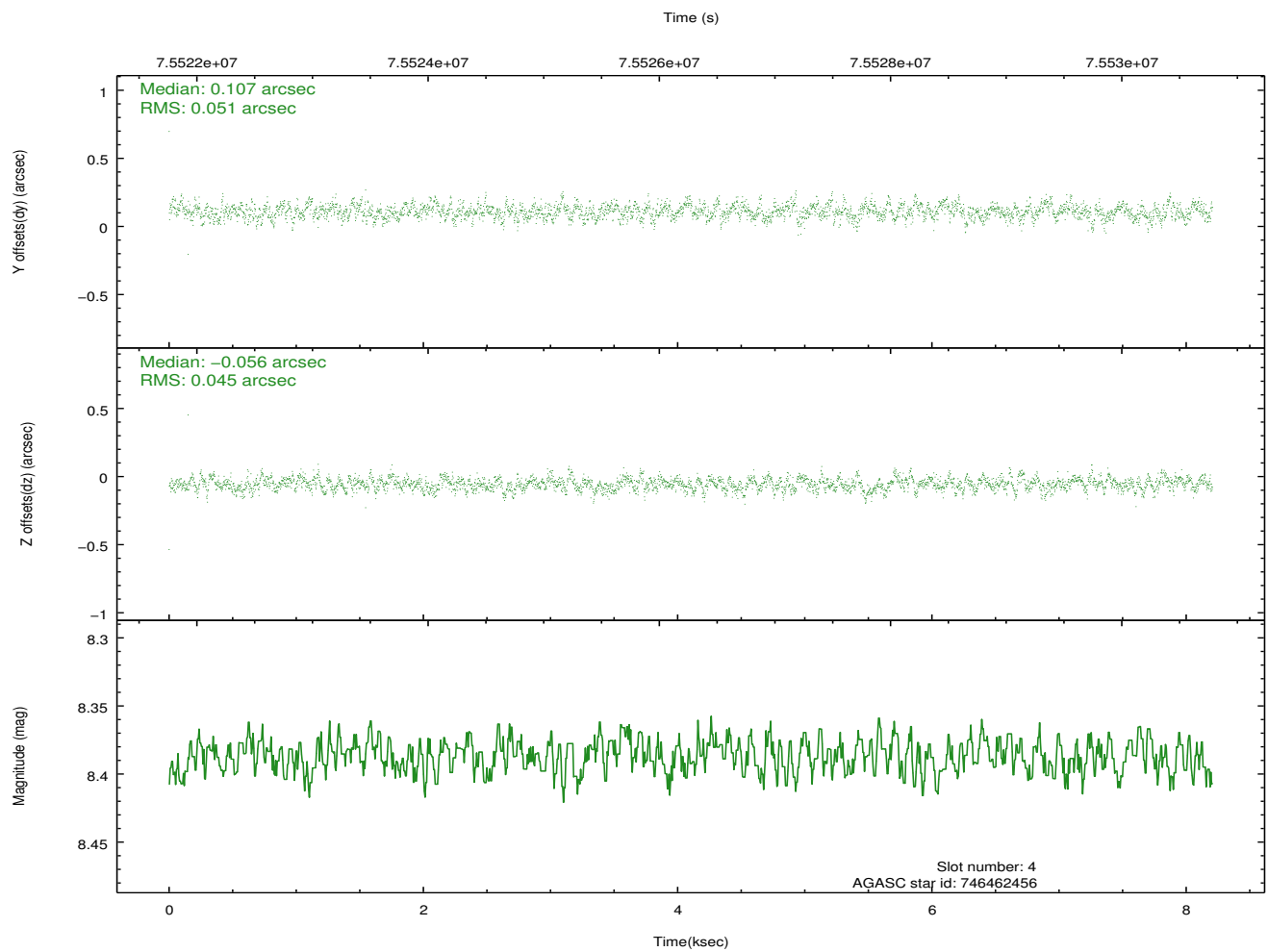
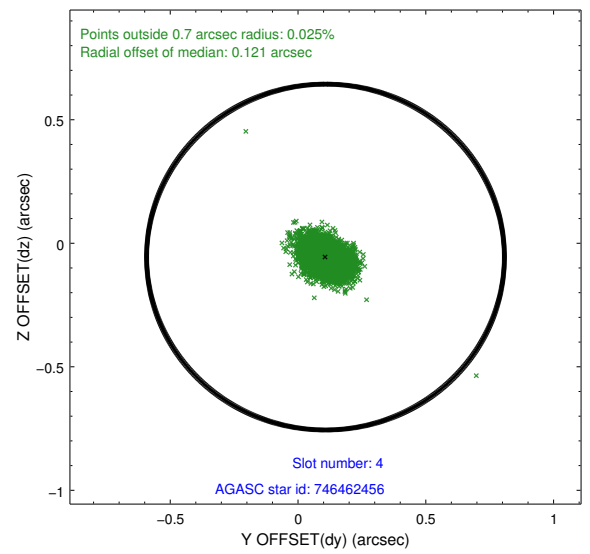
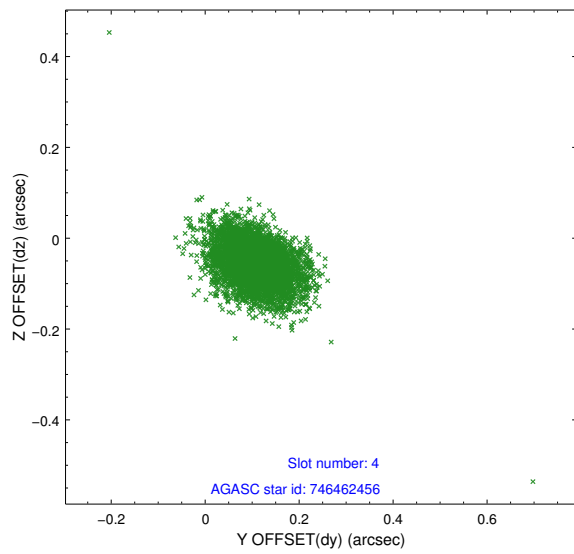
slot	status	id	mag	n_pts	med_dy	med_dz	dr1	dr2	ra	dec	mean_y	mean_z
0	FID	ACIS-I-2	7.17	2001	-0.027	-0.043	0.010	0.016	0.000000	0.000000	-755.00	-983.12
1	FID	ACIS-I-4	7.15	2001	-0.038	0.036	0.007	0.014	0.000000	0.000000	2158.69	922.71
2	FID	ACIS-I-5	7.23	2002	-0.035	0.076	0.010	0.020	0.000000	0.000000	-1807.60	920.39
3	GUIDE	746455152	7.81	4003	-0.248	0.073	0.052	0.092	278.447893	-9.976732	1659.87	-888.56
4	GUIDE	746462456	8.39	4004	0.107	-0.056	0.069	0.116	278.652171	-10.530173	-459.00	-862.40
5	GUIDE	746455112	8.93	4003	0.076	0.092	0.079	0.130	278.266531	-10.703234	-560.99	634.33
6	GUIDE	746460328	9.81	4003	-0.123	0.099	0.102	0.167	278.603974	-9.898096	1729.32	-1506.15
7	GUIDE	746995400	9.70	4003	0.182	-0.211	0.131	0.214	278.078957	-11.289885	-2303.90	1997.77

## 2.4 Star Slots

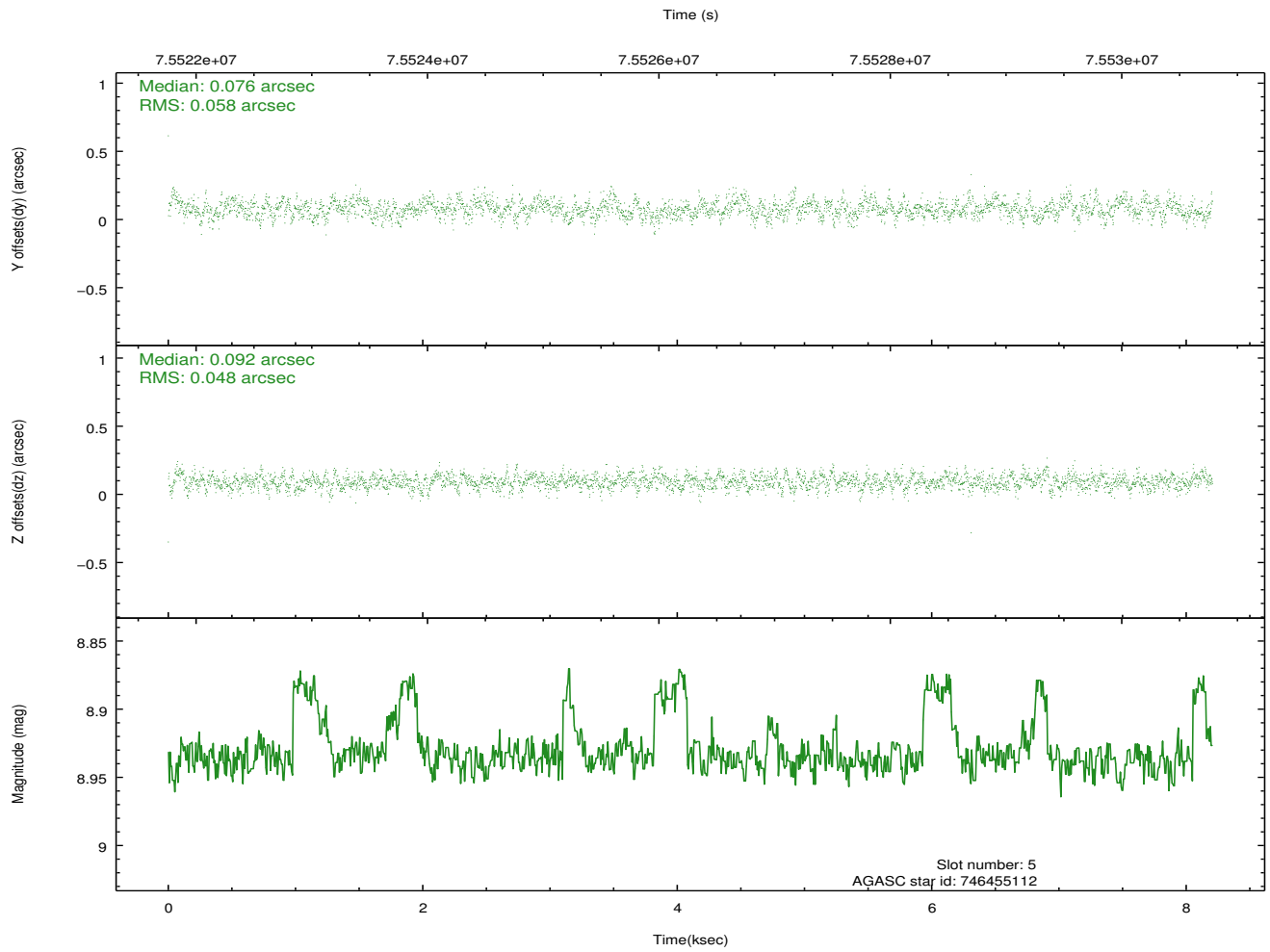
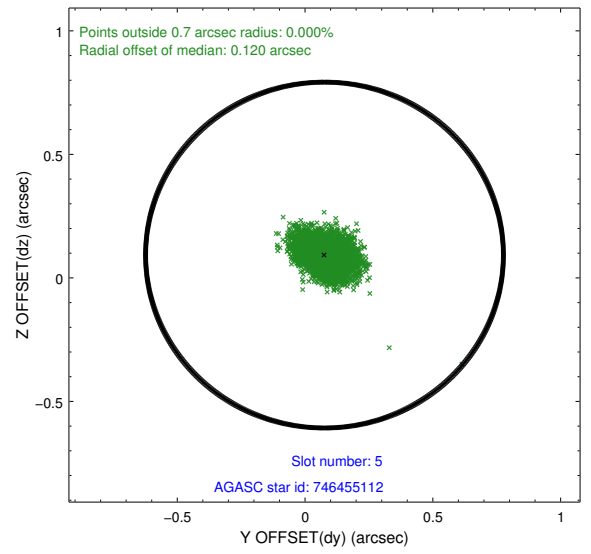
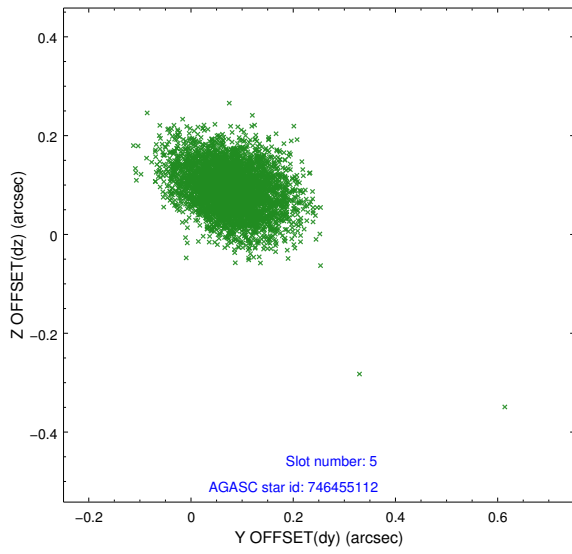
### 2.4.1 Slot 3



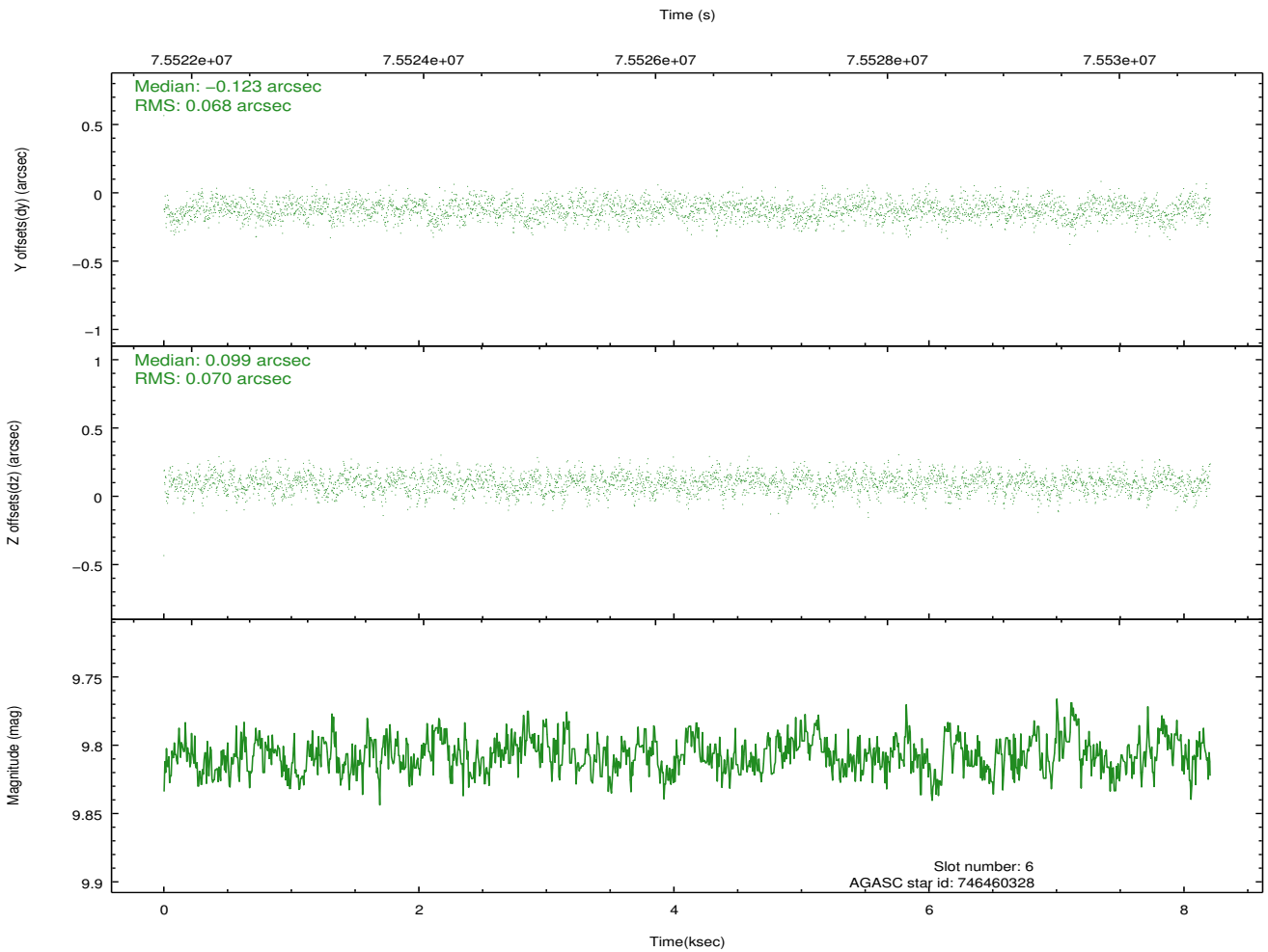
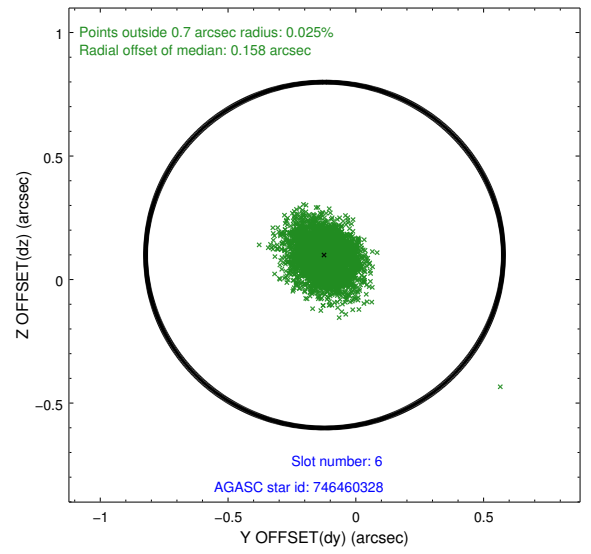
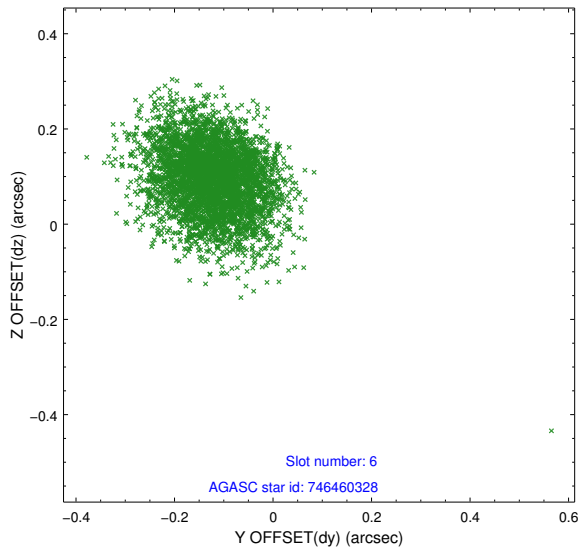
## 2.4.2 Slot 4



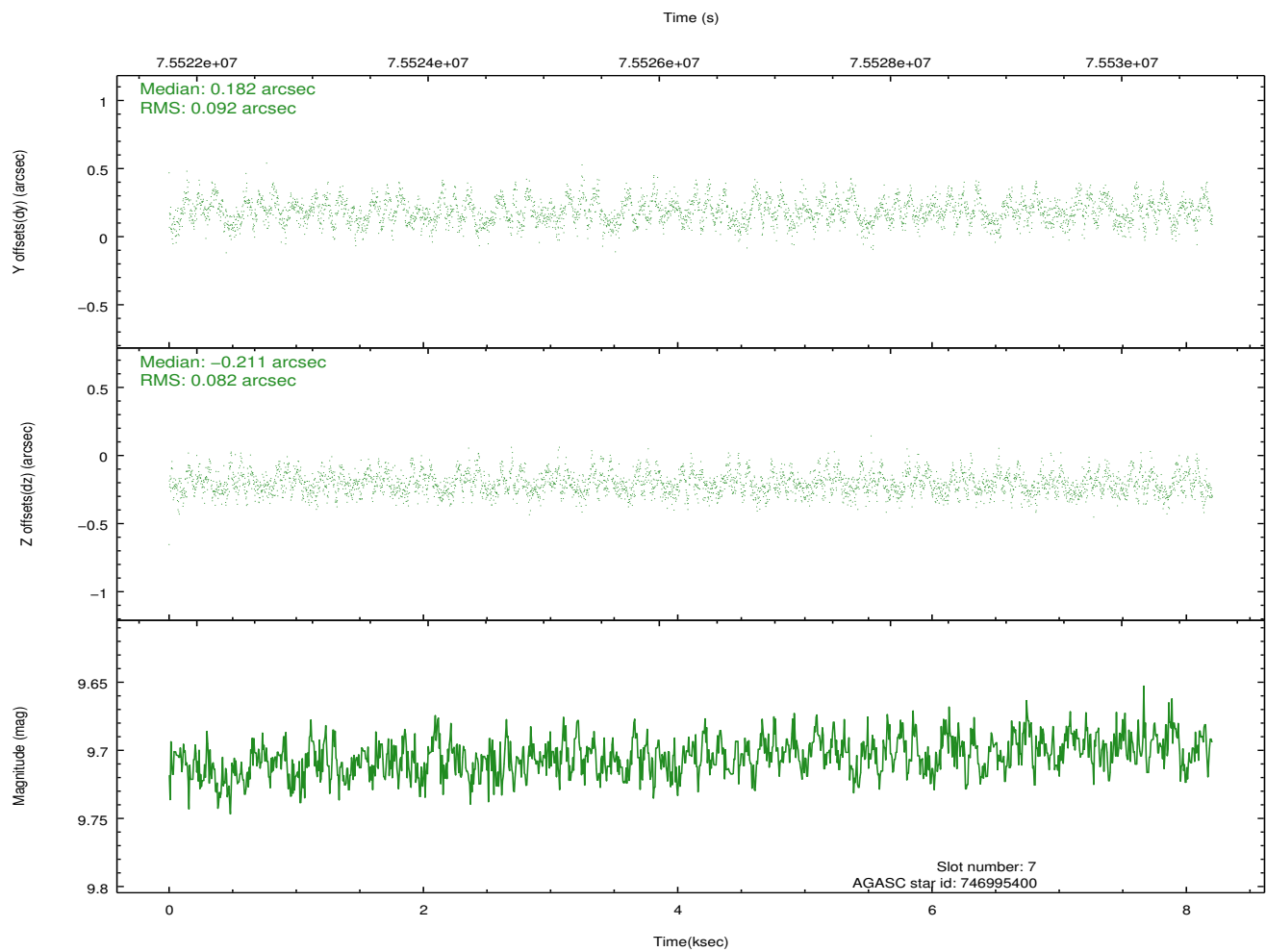
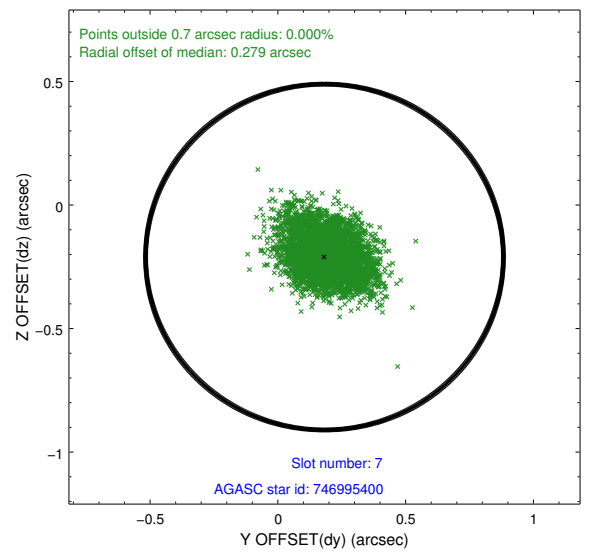
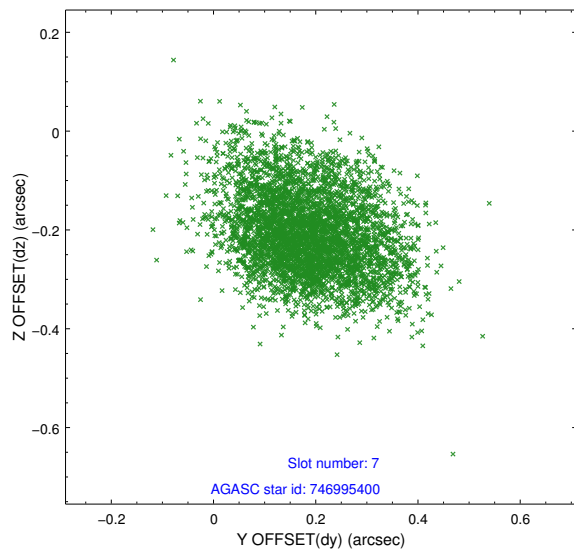
### 2.4.3 Slot 5



### 2.4.4 Slot 6

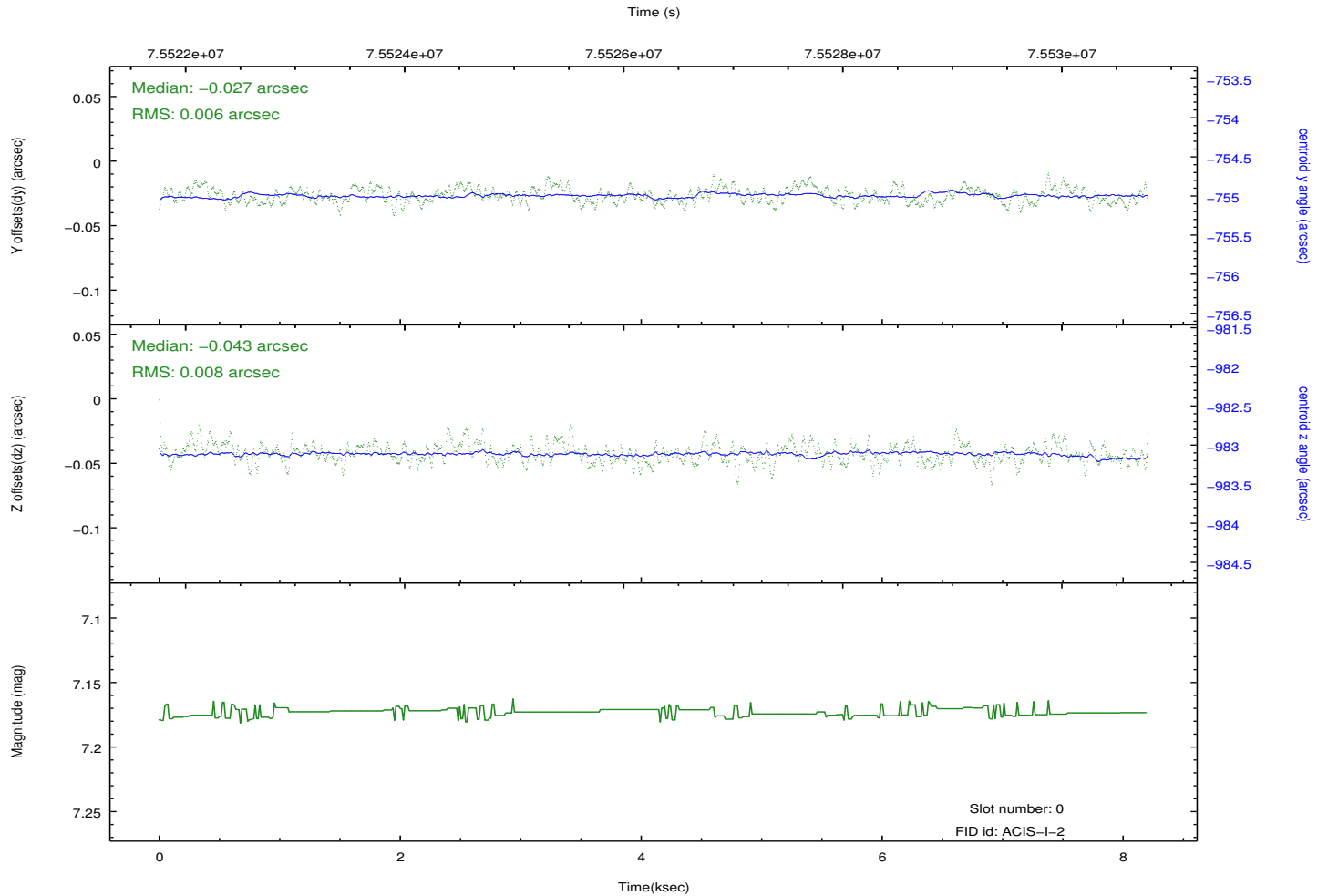
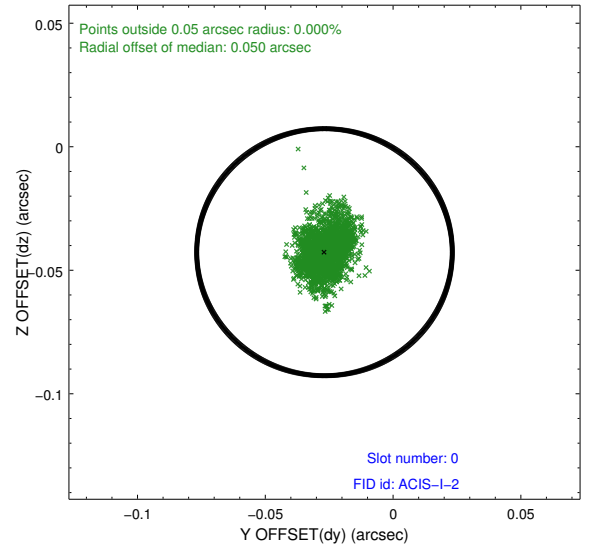
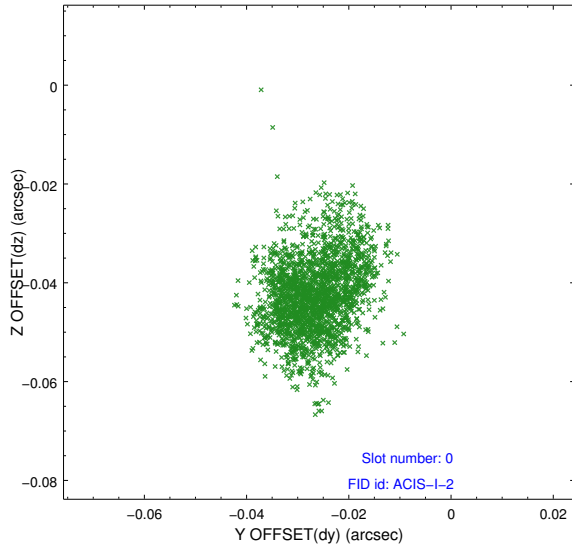


### 2.4.5 Slot 7

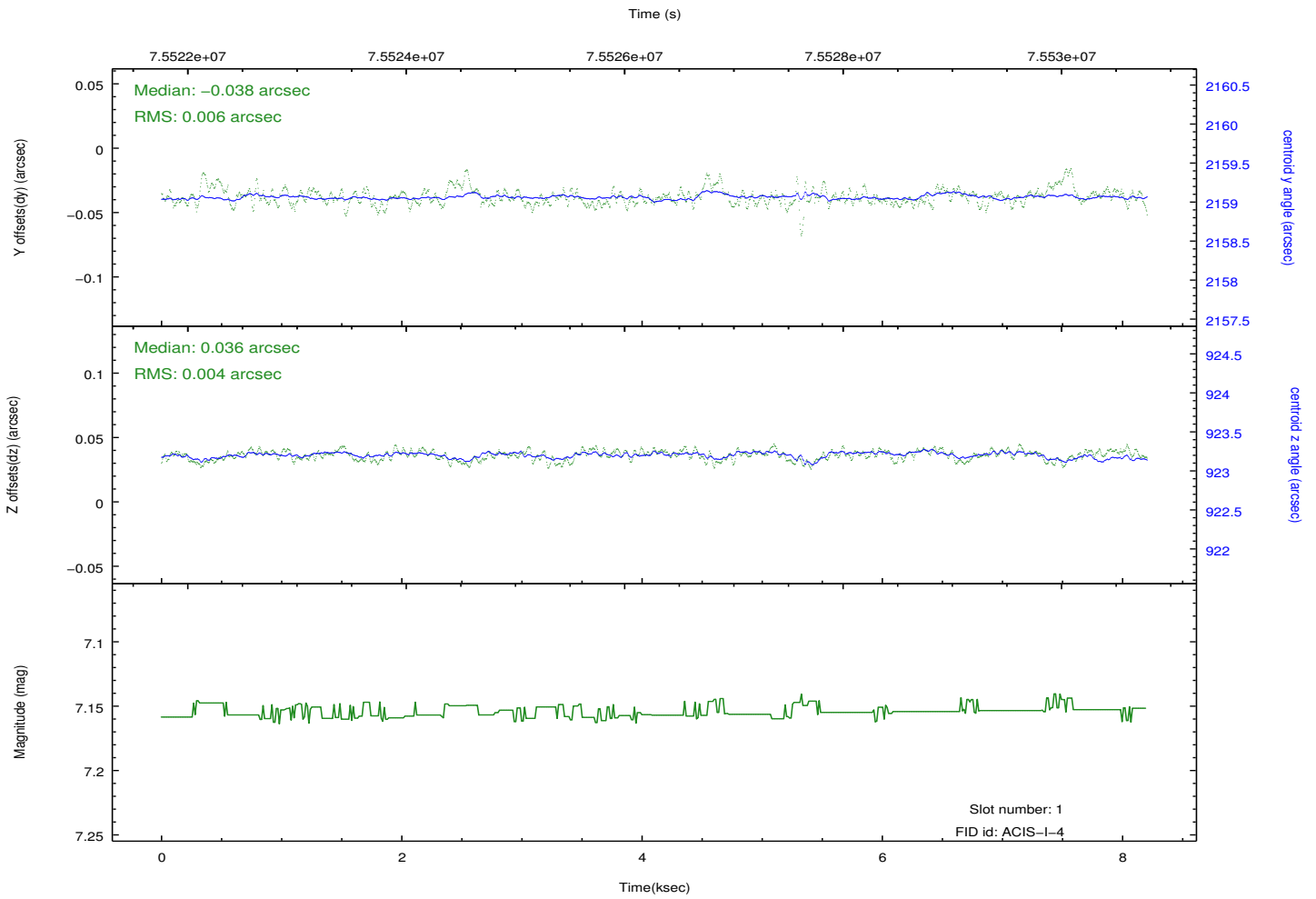
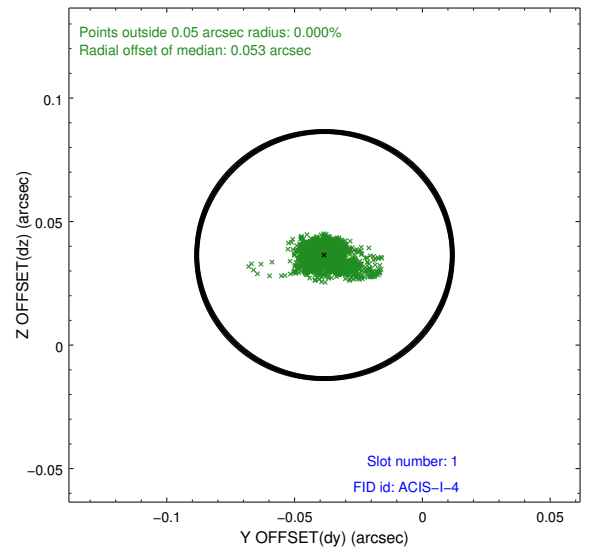
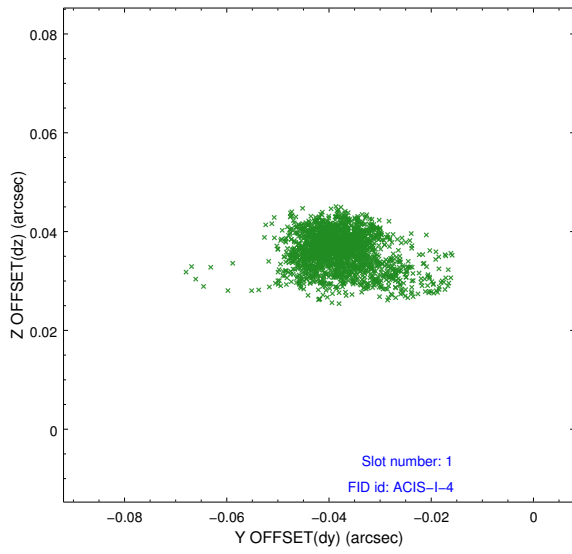


## 2.5 FID Slots

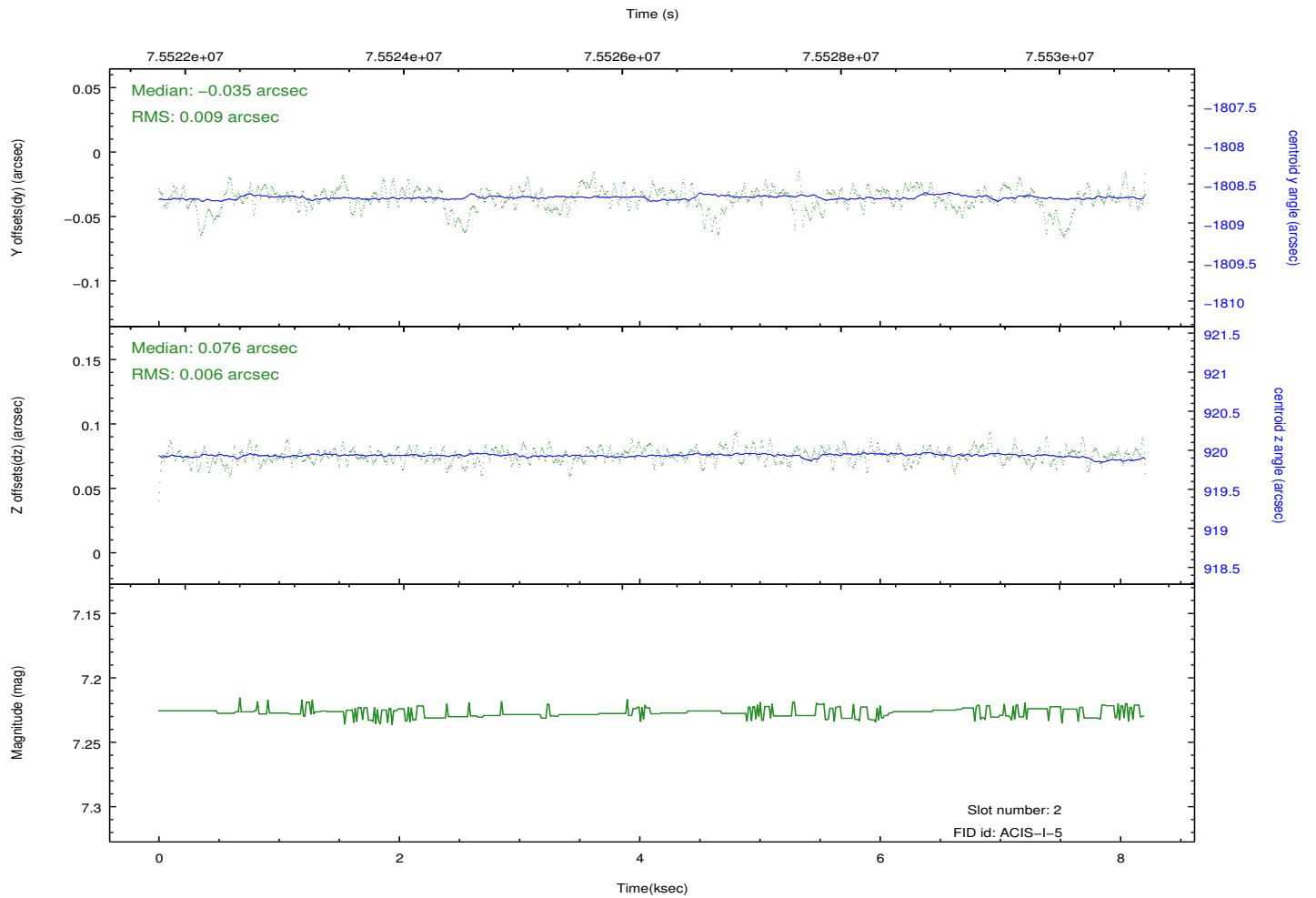
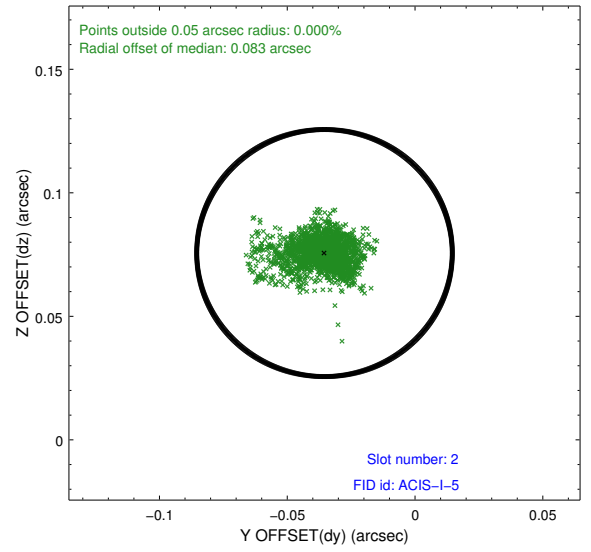
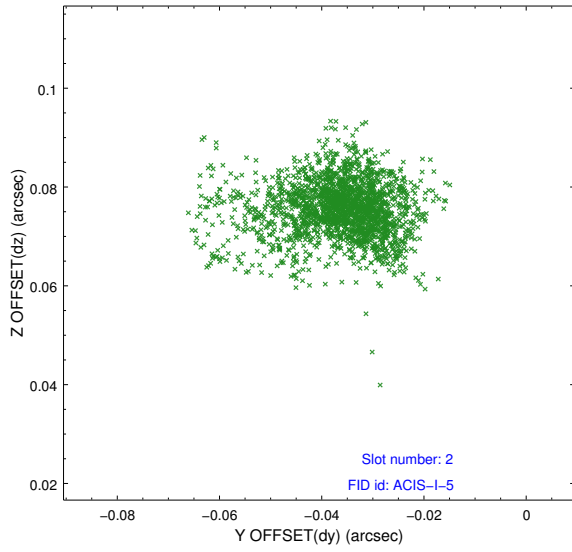
### 2.5.1 Slot 0



## 2.5.2 Slot 1



### 2.5.3 Slot 2



# A Summary

## A.1 Status

V&V Scientist	Beth Sundheim
V&V Date (YYYY-MM-DD)	2012.08.30
V&V Edition	1
V&V Disposition and Status	OK
V&V Charge Time	7.67

## A.2 Comments