

V&V Reference Report

L2 ASCDS Version : 10.2.4

Observation 17314 - L2 Version 1
Chandra X-Ray Center

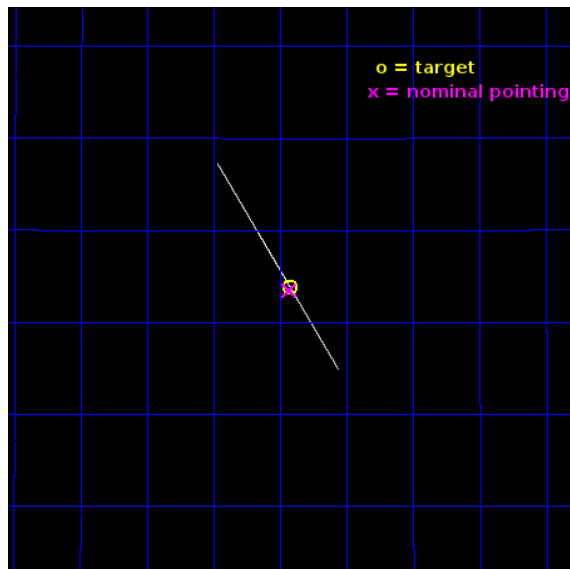
L2 Processing Date : Aug 31 2014

Contents

1	Front	2
2	OBI	3
2.1	OBI	3
2.1.1	Images	3
2.1.2	Bias	3
2.1.3	Parameters	4
2.1.4	Events	4
2.2	Compared Parameters	5
2.3	Aspect	6
2.4	Star Slots	9
2.4.1	Slot 3	9
2.4.2	Slot 4	10
2.4.3	Slot 5	11
2.4.4	Slot 6	12
2.4.5	Slot 7	13
2.5	FID Slots	14
2.5.1	Slot 0	14
2.5.2	Slot 1	15
2.5.3	Slot 2	16
A	Summary	17
A.1	Status	17
A.2	Comments	17

1 Front

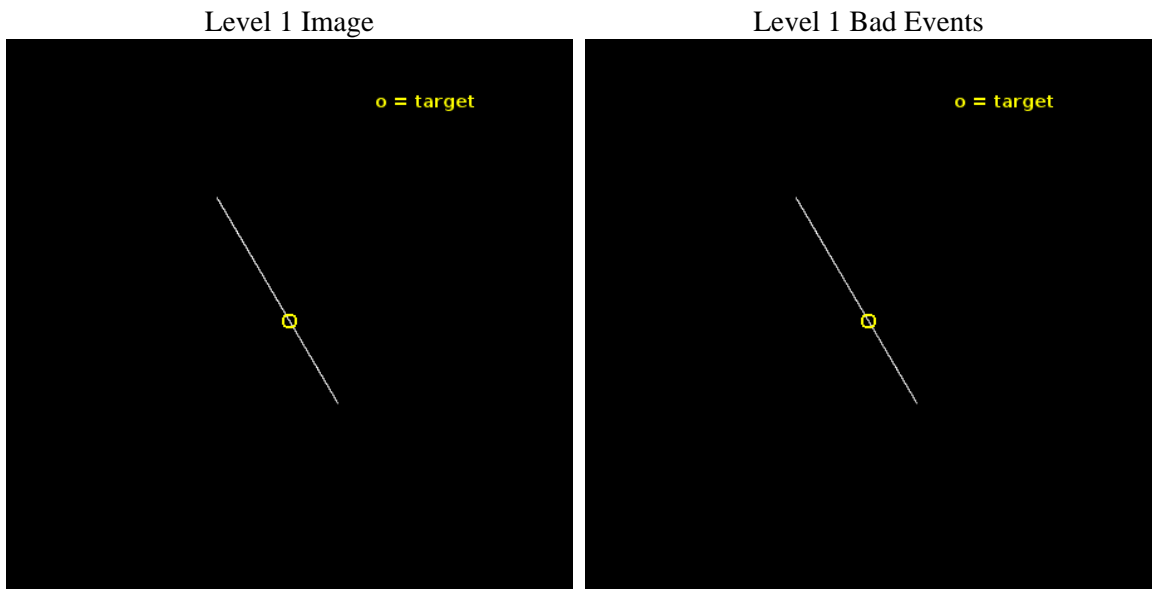
seq_num	502479	Sequence number
obs_id	17314	Observation id
title	Measuring the period derivative of the newly discovered magnetar SGR 1935+2154	Proposal title
observer	Dr. Nanda Rea	Principal investigator
object	SGR 1935+2154	Source name
ra_targ	293.731667	Observer's specified target RA [deg]
dec_targ	21.896611	Observer's specified target Dec [deg]
ra_nom	293.7326252069	Nominal RA [deg]
dec_nom	21.891246471782	Nominal Dec [deg]
roll_nom	240.47299520946	Nominal Roll [deg]
revision	1	Processing version of data
ontime	29154.75	Sum of GTIs [s]
livetime	29040.864257812	Livetime [s]
ontime6	29154.75	Sum of GTIs [s]
ontime7	29154.75	Sum of GTIs [s]
ontime8	29151.832397819	Sum of GTIs [s]
l2events	142428	Number of level 2 events



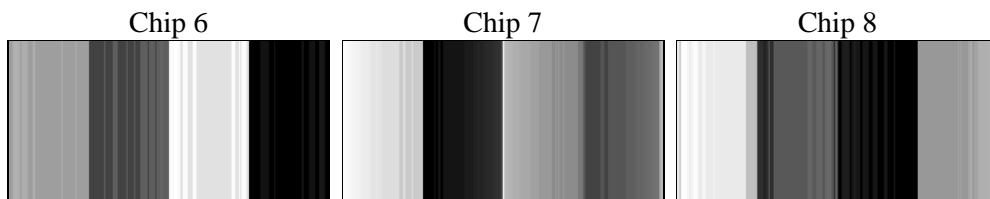
2 OBI

2.1 OBI

2.1.1 Images



2.1.2 Bias



2.1.3 Parameters

obi_num	0	Obi number	sched_exp_time	29000.000000	[s] Scheduled observation exposure time
ascdsver	10.2.4	Processing system revision	ontime	29154.75	Sum of GTIs [s]
caldsver	4.6.2	 	ontime6	29154.75	Sum of GTIs [s]
date	2014-08-31T15:50:48	Date and time of file creation	ontime7	29154.75	Sum of GTIs [s]
revision	1	Processing version of data	ontime8	29151.832397819	Sum of GTIs [s]
			l1events	987666	Number of level 1 events

2.1.4 Events

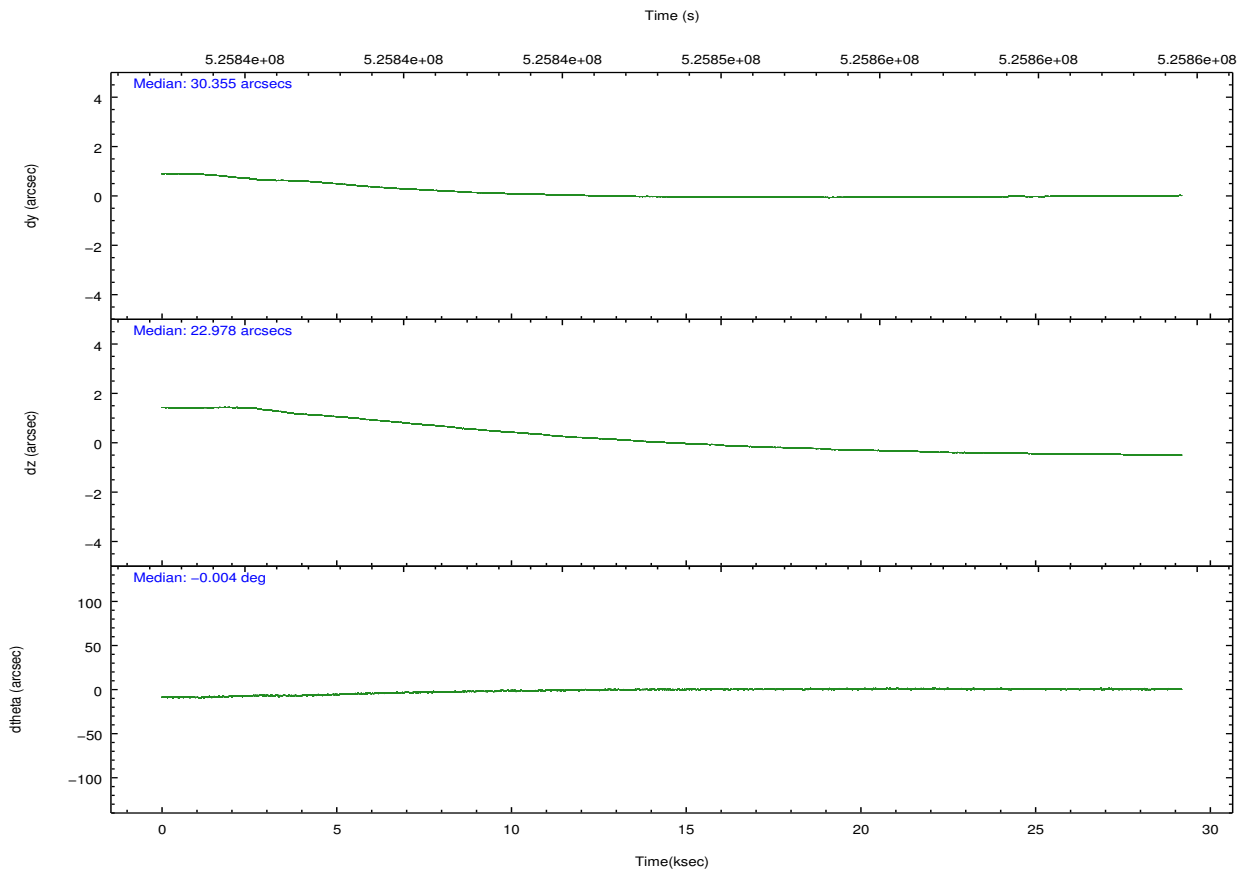
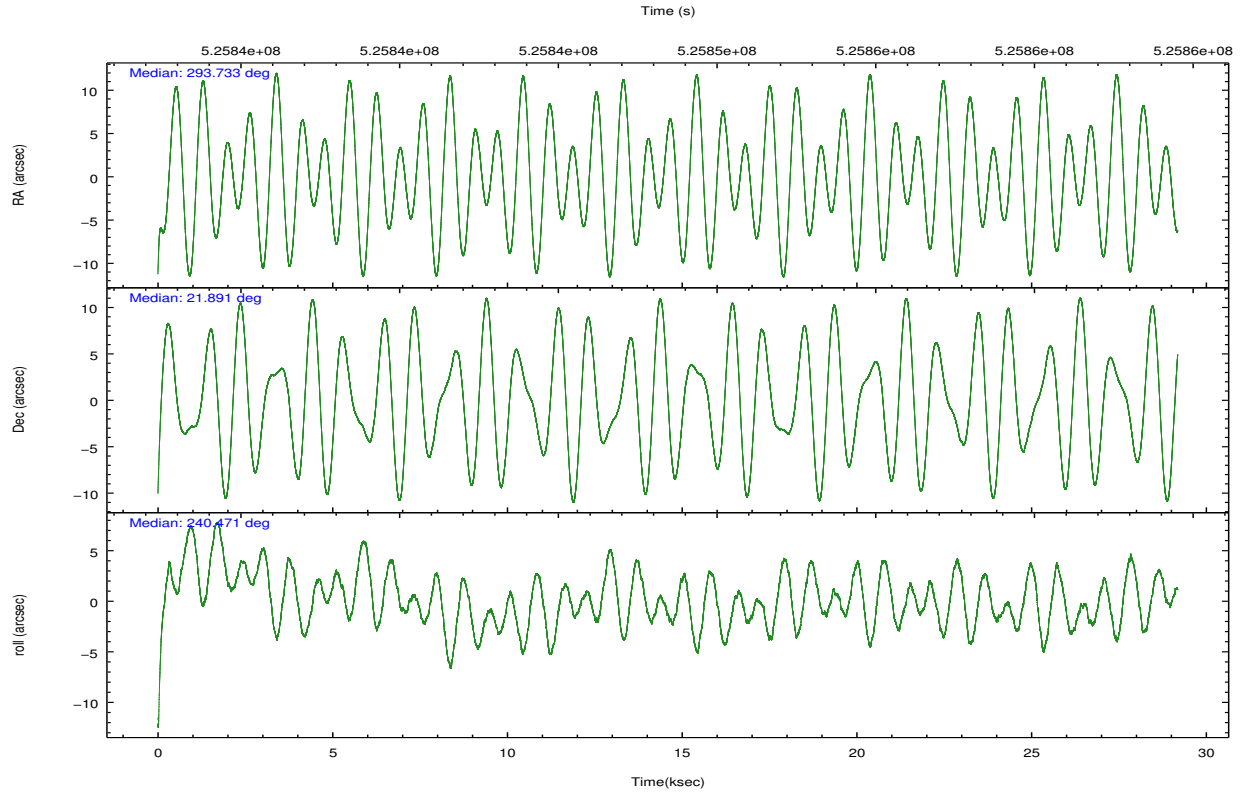
	ccd 6	ccd 7	ccd 8
level 1 events	263866	300762	423038
rejected events	236424	206902	348184
rejected %	89%	68%	82%

	ccd 6	ccd 7	ccd 8
grade 0 events	2930	6170	15620
	1%	2%	3%
grade 1 events	146	271	358
	0%	0%	0%
grade 2 events	10287	24981	22983
	3%	8%	5%
grade 3 events	3499	4519	7889
	1%	1%	1%
grade 4 events	3219	4422	7685
	1%	1%	1%
grade 5 events	8045	19371	12167
	3%	6%	2%
grade 6 events	7516	53789	20681
	2%	17%	4%
grade 7 events	228224	187239	335655
	86%	62%	79%

2.2 Compared Parameters

Parameter	Planned	Actual	Parameter	Planned	Actual
Instrument	ACIS	ACIS	Obspar format version number	7	7
Detector	ACIS-678	ACIS-678	Obspar file type	PREDICTED	ACTUAL
Grating	NONE	NONE	Obspar update status	NONE	UPDATED
Data mode	CC33_FAINT	CC33_FAINT	CCD I0 on	N	N
Observation mode	POINTING	POINTING	CCD I1 on	N	N
[deg] Pointing RA	293.732002	293.7326252069041	CCD I2 on	N	N
[deg] Pointing Dec	21.918685	21.89124647178228	CCD I3 on	N	N
[deg] Pointing Roll	240.316603	240.4729952094636	CCD S0 on	N	N
[mm] SIM focus pos	-0.684267	-0.6828225247311905	CCD S1 on	N	N
[mm] SIM defocus	0	0.001444936568705701	CCD S2 on	O1	Y
[mm] SIM translation stage pos	-190.132523	-190.1425803651734	CCD S3 on	Y	Y
[mm] SIM translation stage offset	0	0.01005778216563158	CCD S4 on	O2	Y
[s] Observation start time (MET)	525834035.184000	525832964.79844	CCD S5 on	N	N
Observation start date	2014-08-31T00:59:28	2014-08-31T00:42:44	Number of optional ACIS chips dropped	0	0
[s] Observation end time (MET)	525863035.184000	525864007.95016	On-chip summing requested	N	N
Observation end date	2014-08-31T09:02:48	2014-08-31T09:20:07	Subarray requested	NONE	NONE
Read mode	CONTINUOUS	CONTINUOUS	Alternating exposures requested	N	N
			[s] Primary exposure time	0.000000	0

2.3 Aspect

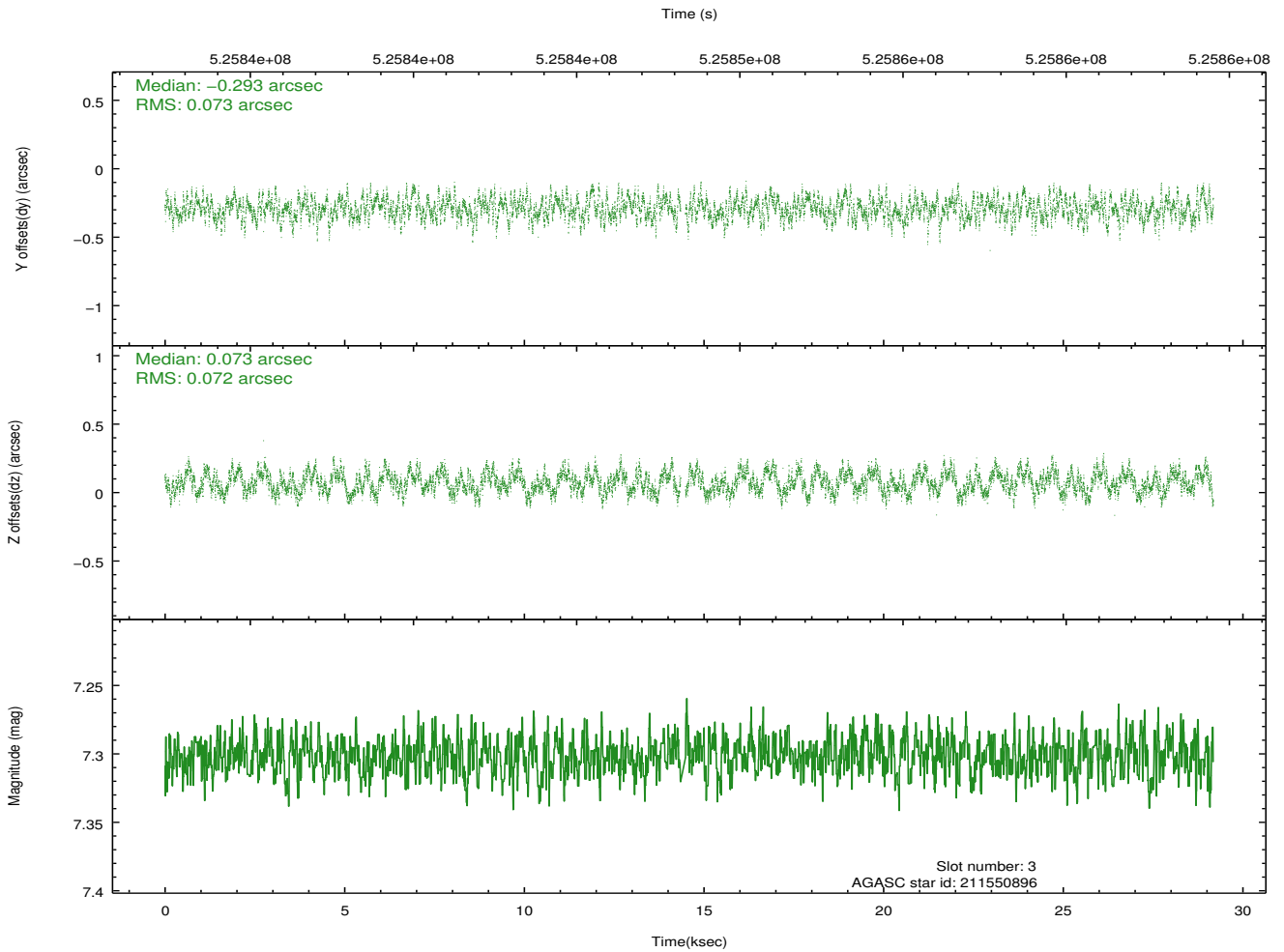
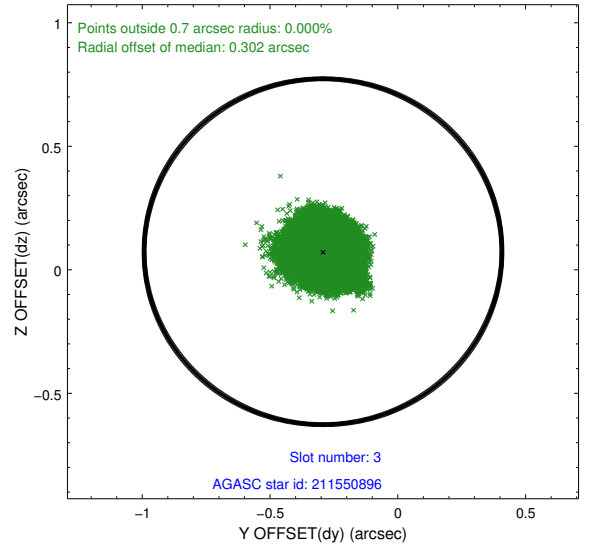
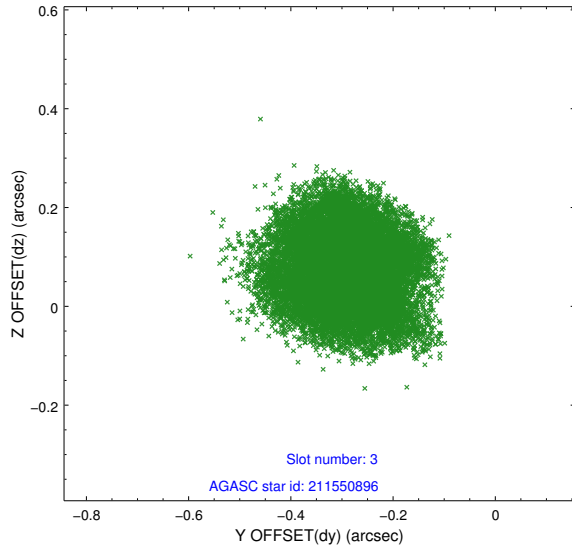


Slot Statistics

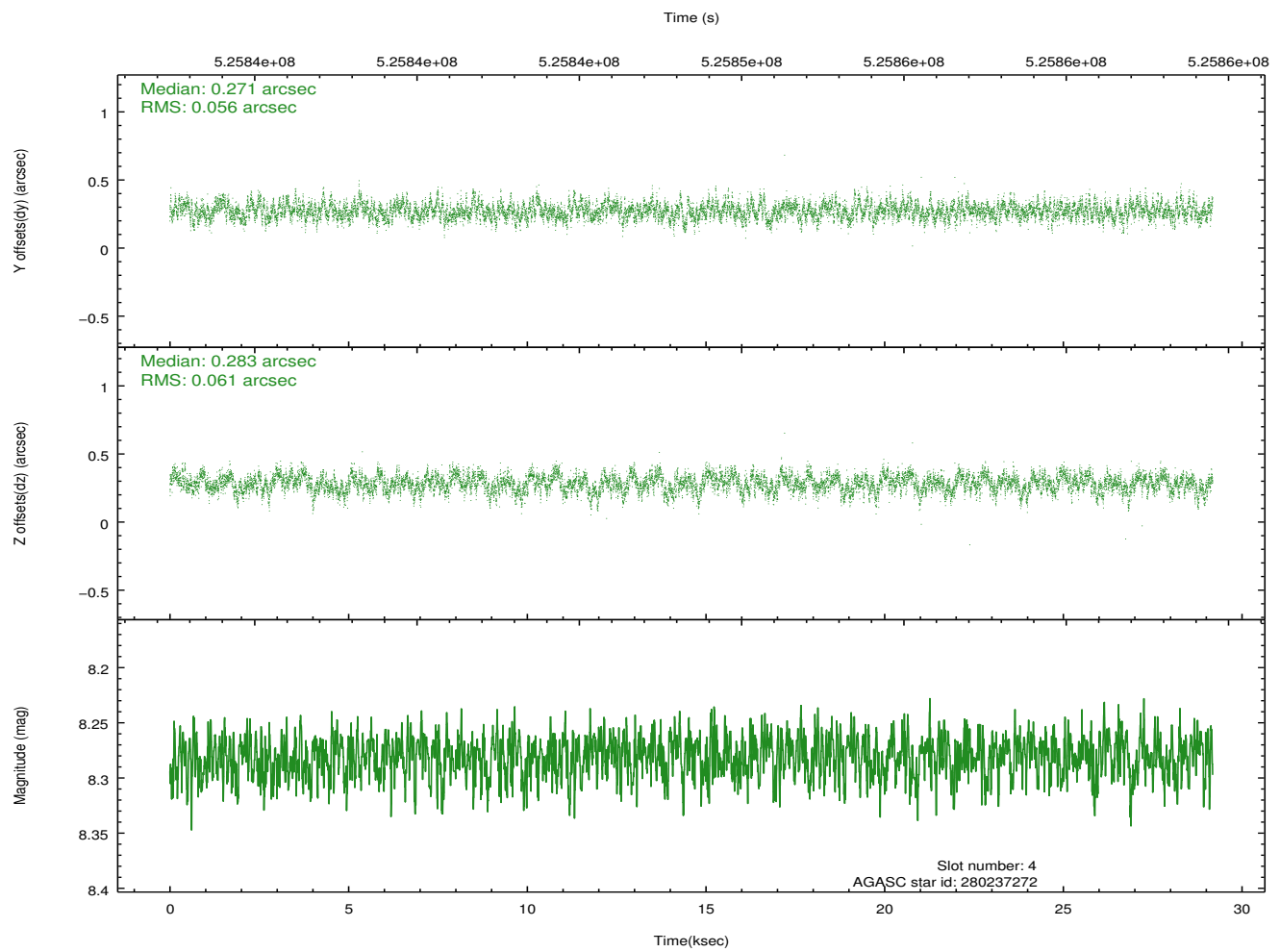
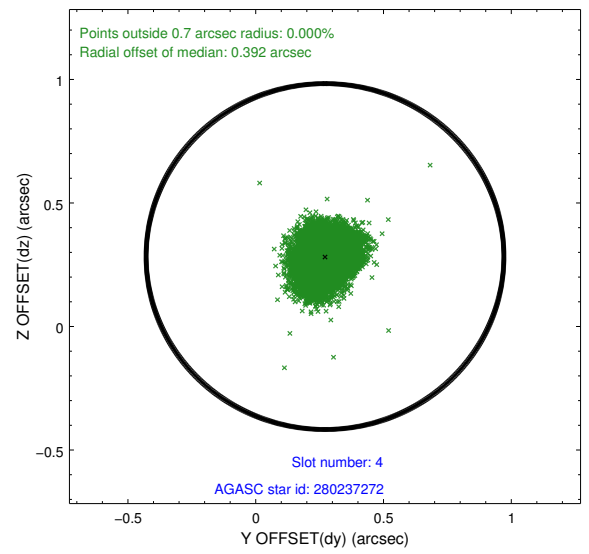
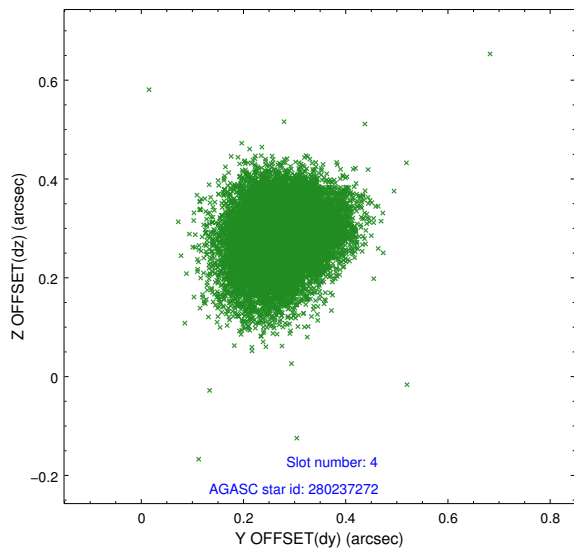
slot	status	id	mag	n_pts	med_dy	med_dz	dr1	dr2	ra	dec	mean_y	mean_z
0	FID	ACIS-S-2	6.93	7119	-0.226	-0.043	0.012	0.038	0.000000	0.000000	-784.11	-1744.79
1	FID	ACIS-S-4	7.03	7118	0.409	0.119	0.007	0.012	0.000000	0.000000	2129.75	163.79
2	FID	ACIS-S-5	7.05	7118	-0.215	-0.068	0.012	0.031	0.000000	0.000000	-1836.86	157.33
3	GUIDE	211550896	7.30	14169	-0.293	0.073	0.114	0.167	294.277529	22.005948	-1177.48	1425.02
4	GUIDE	280237272	8.28	14237	0.271	0.283	0.088	0.141	293.907450	22.501900	-2112.78	-532.35
5	GUIDE	211423912	8.73	14229	0.185	0.105	0.085	0.136	293.445577	21.516043	1733.95	-115.62
6	GUIDE	211423592	8.55	14231	0.152	-0.088	0.086	0.137	293.495961	21.988235	171.38	-808.11
7	GUIDE	211421456	8.62	14233	-0.320	-0.371	0.090	0.144	293.898628	21.164403	2081.61	1830.55

2.4 Star Slots

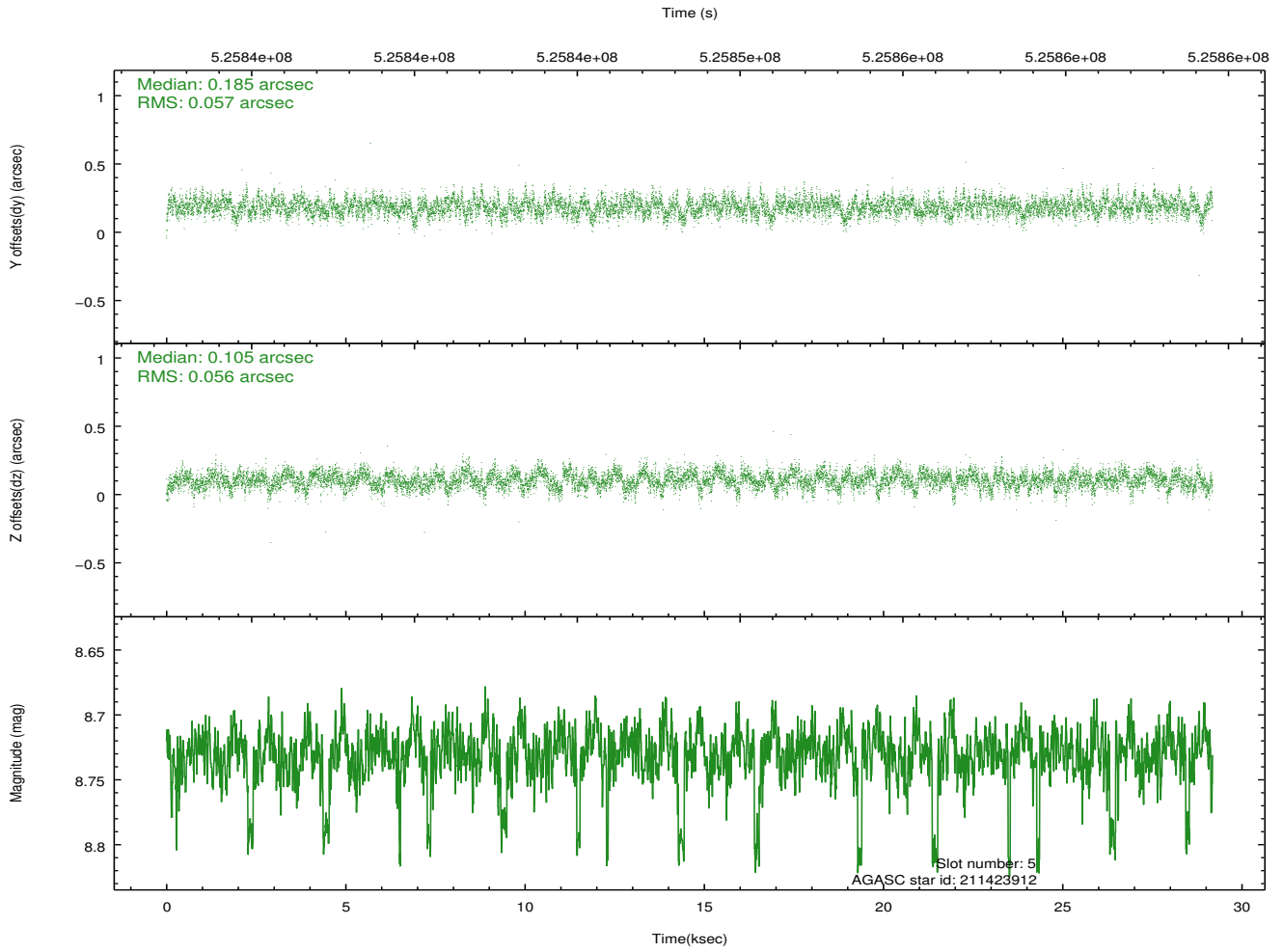
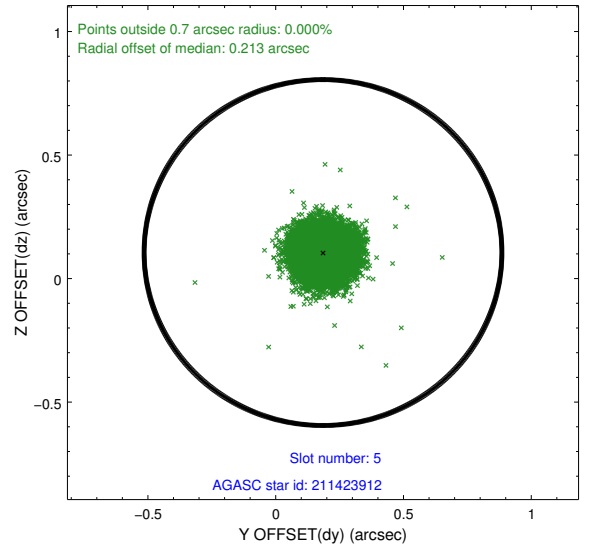
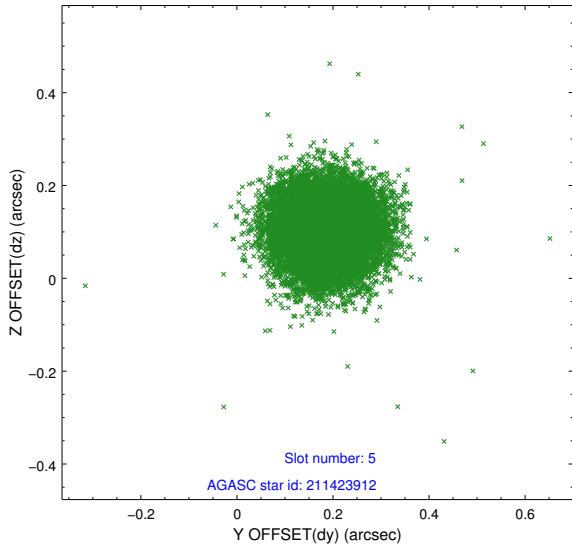
2.4.1 Slot 3



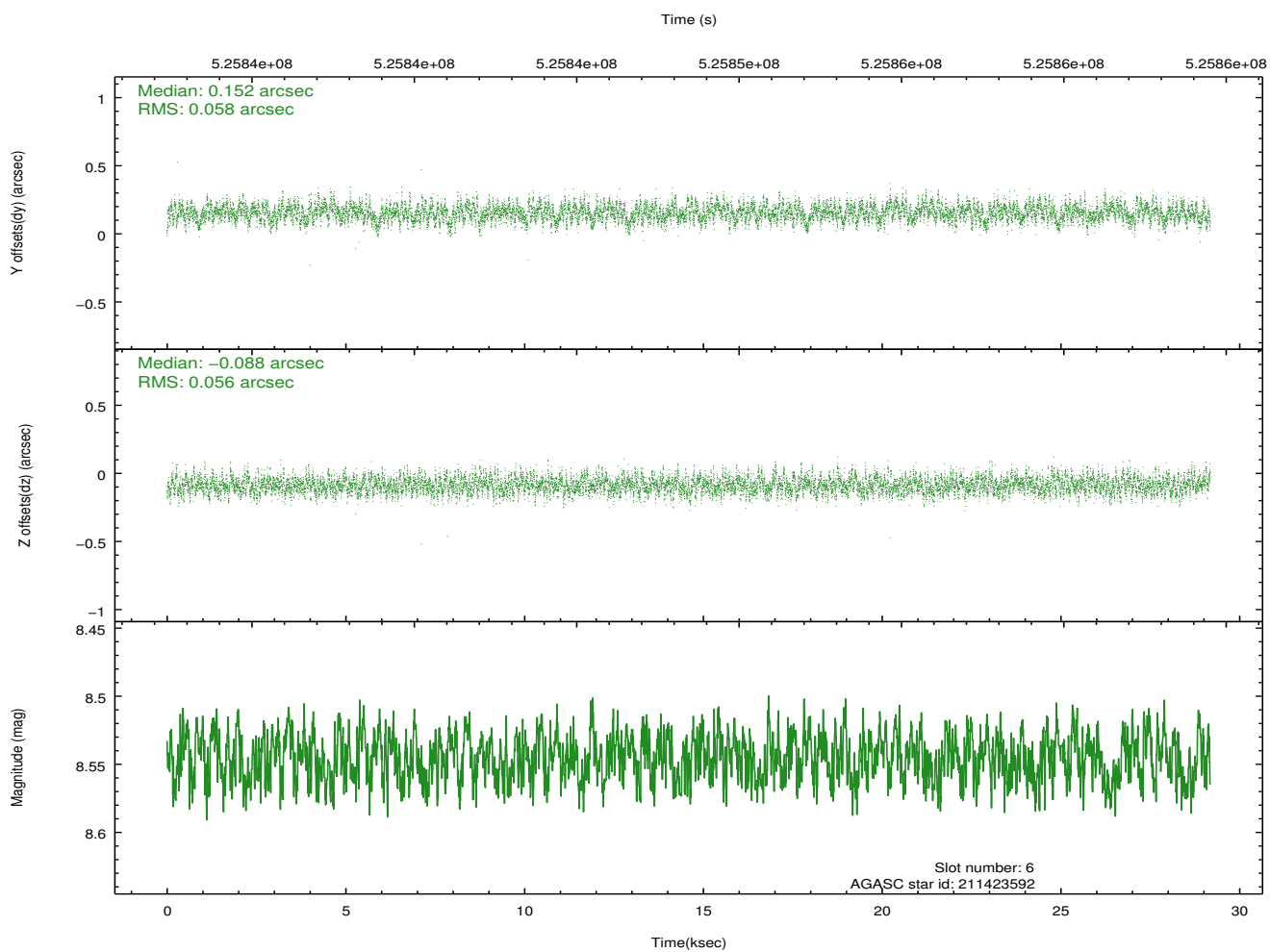
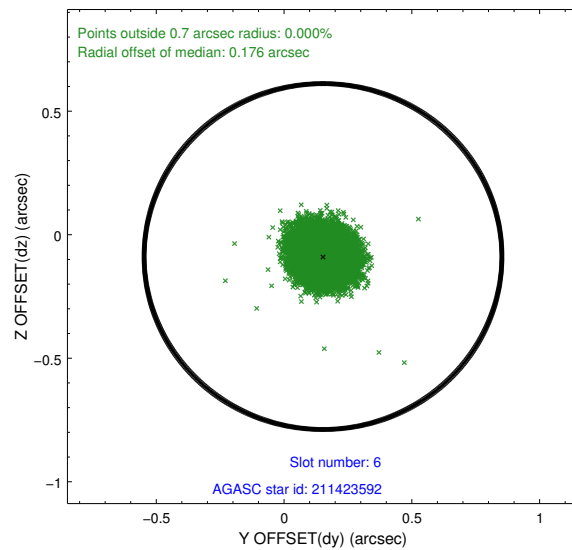
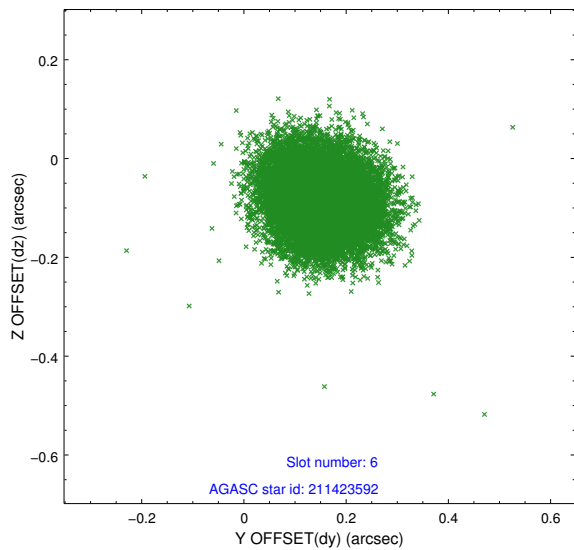
2.4.2 Slot 4



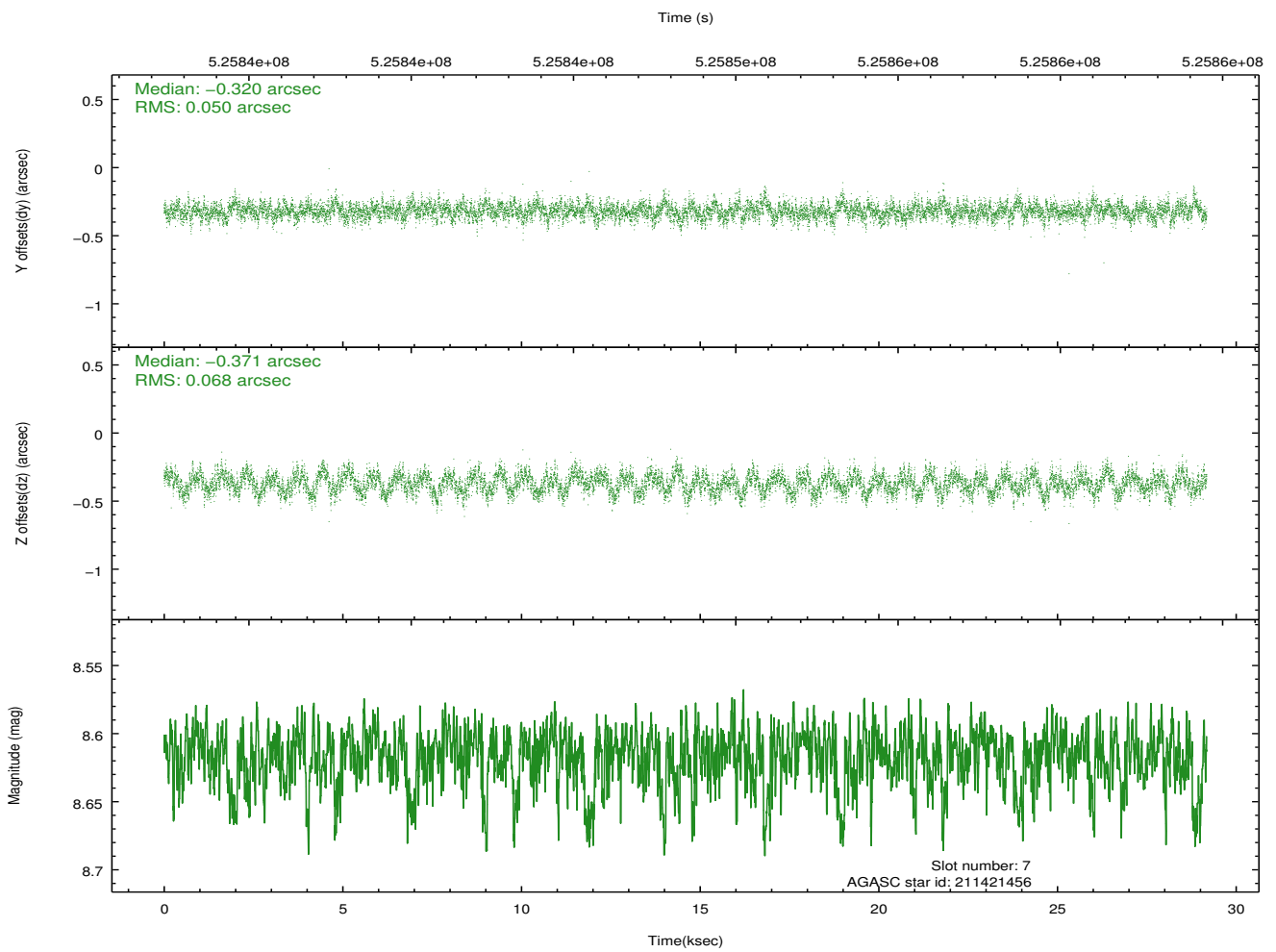
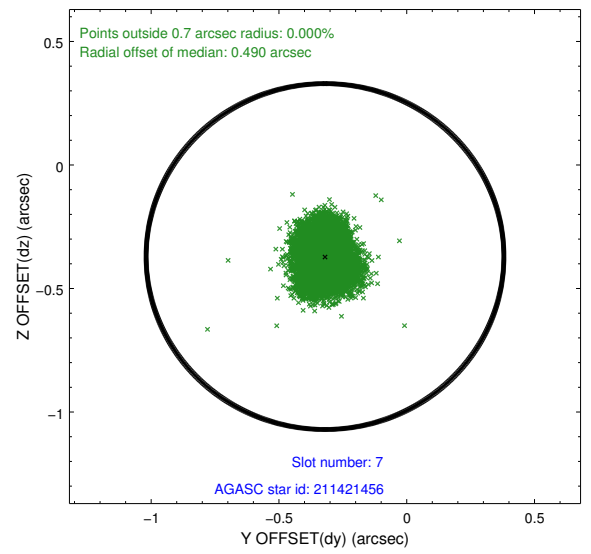
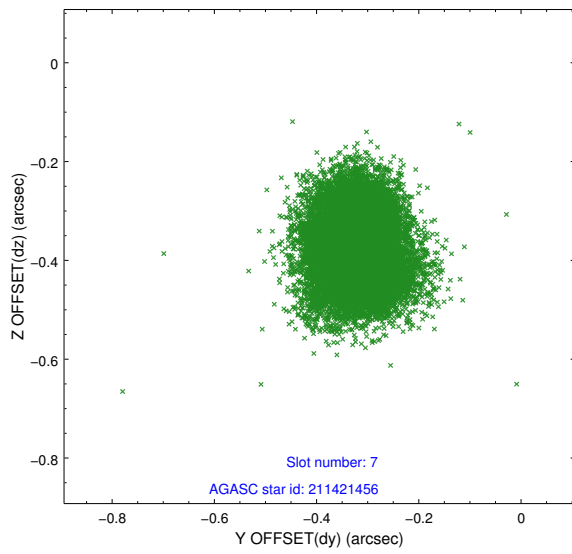
2.4.3 Slot 5



2.4.4 Slot 6

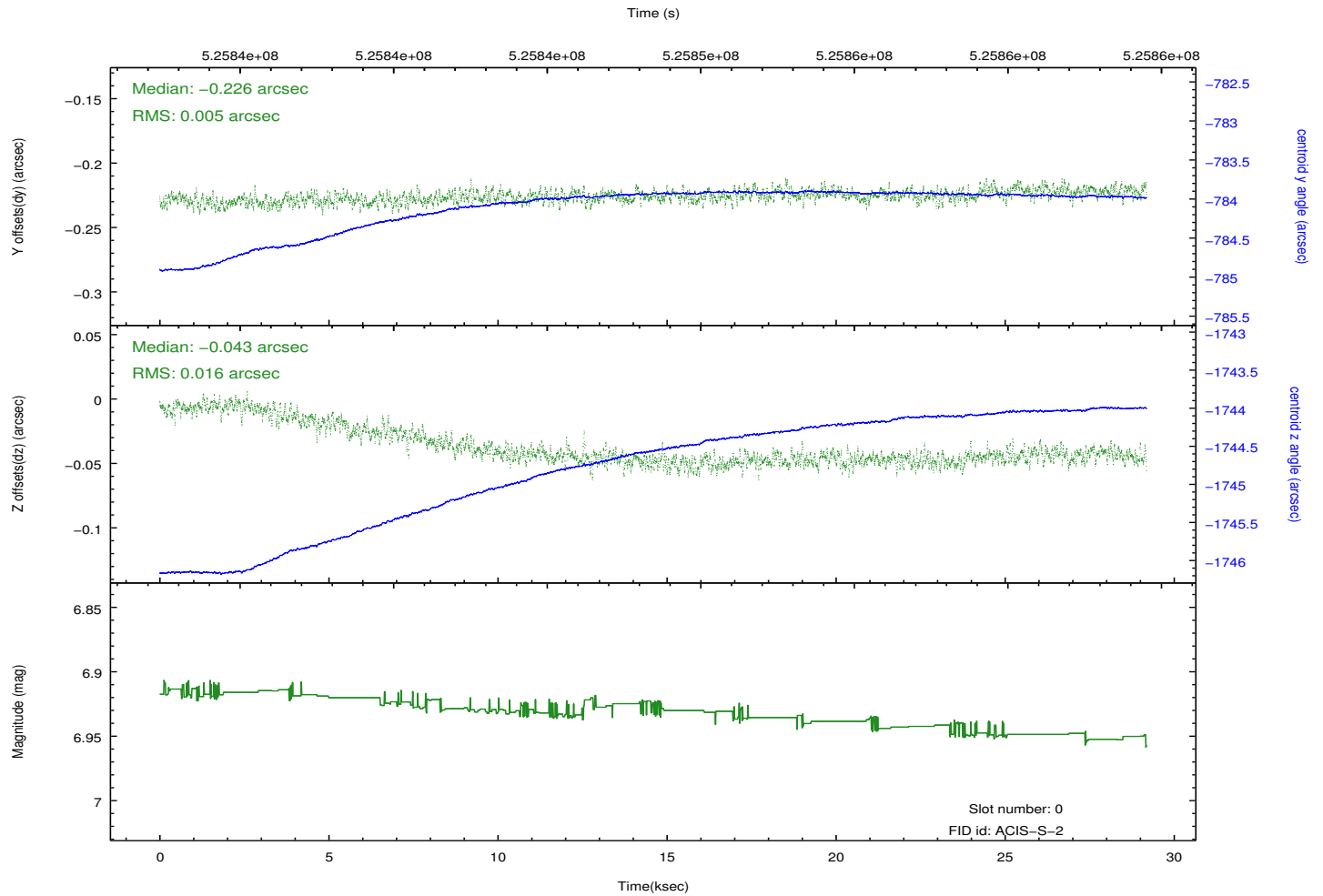
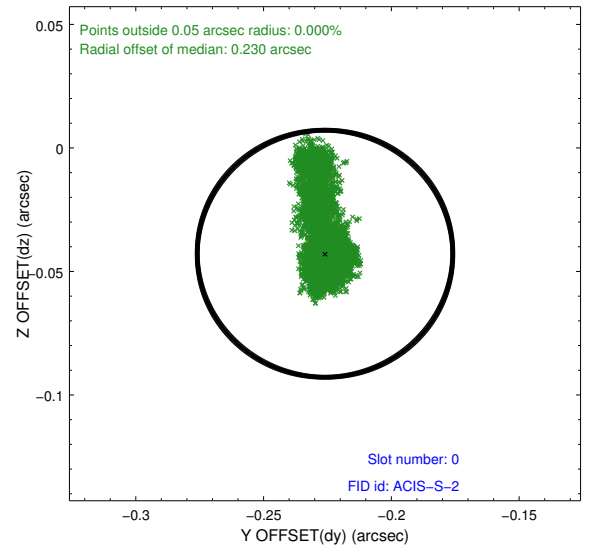
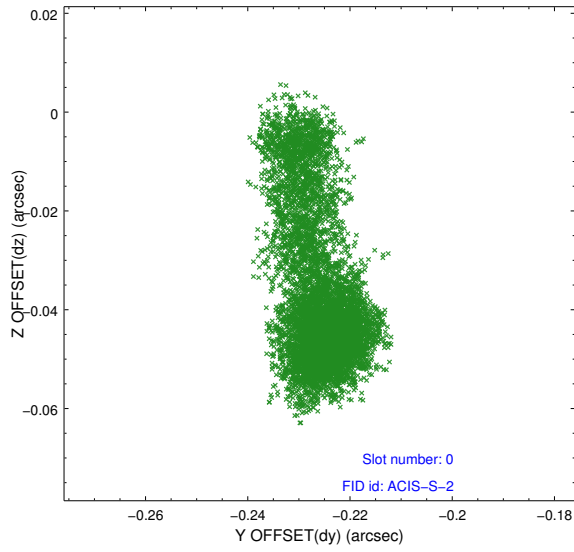


2.4.5 Slot 7

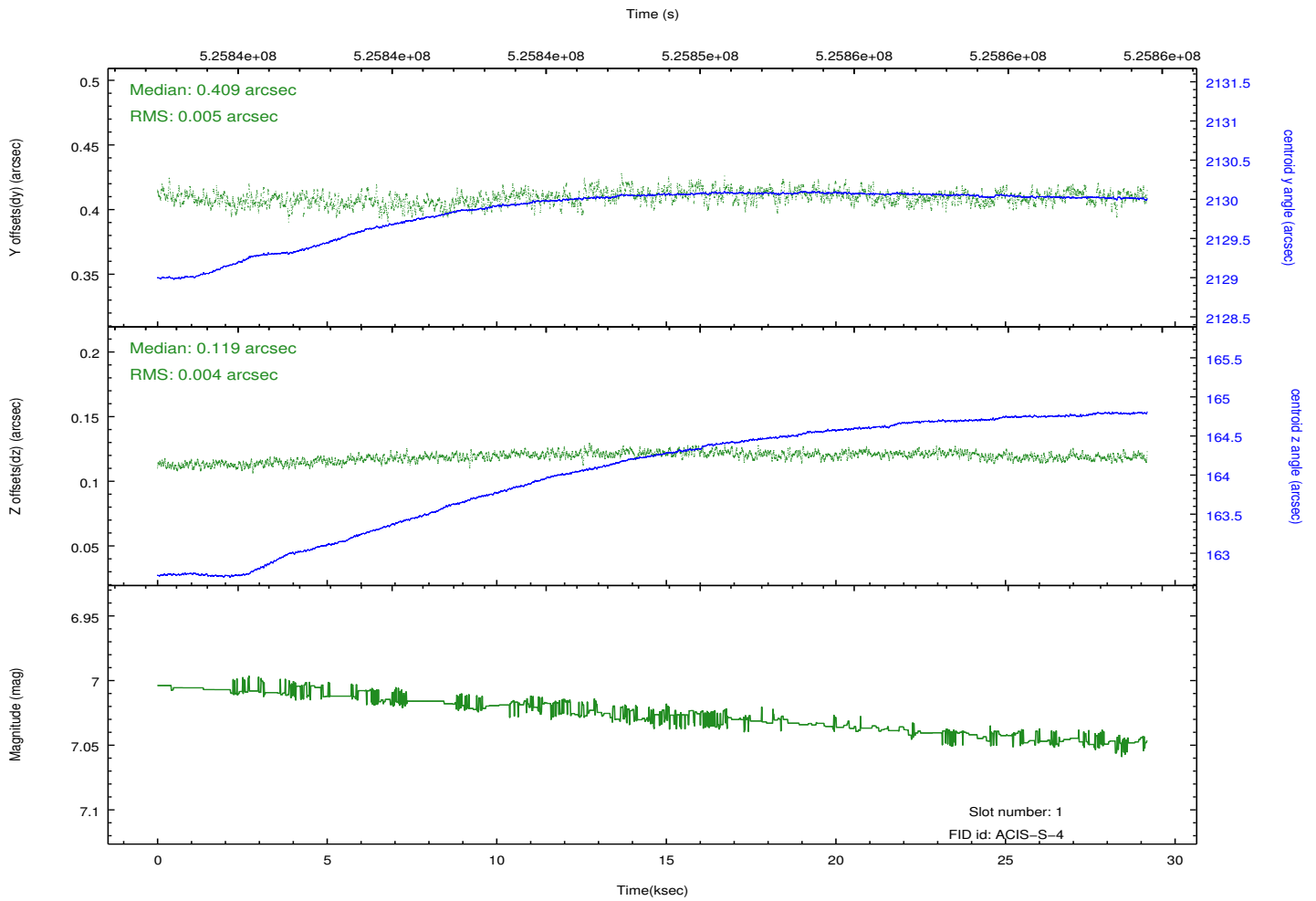
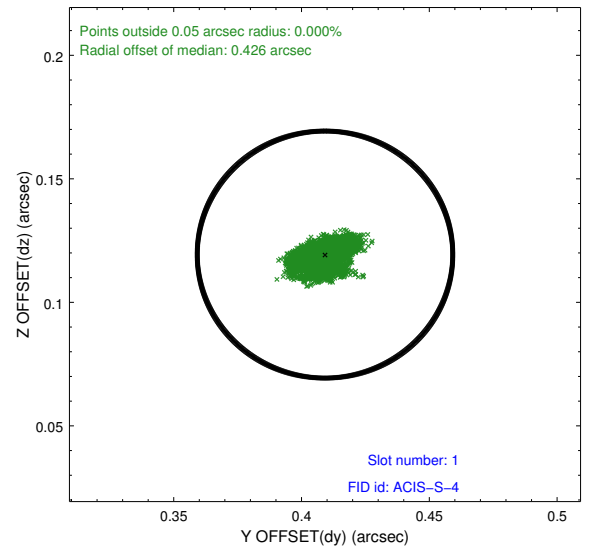
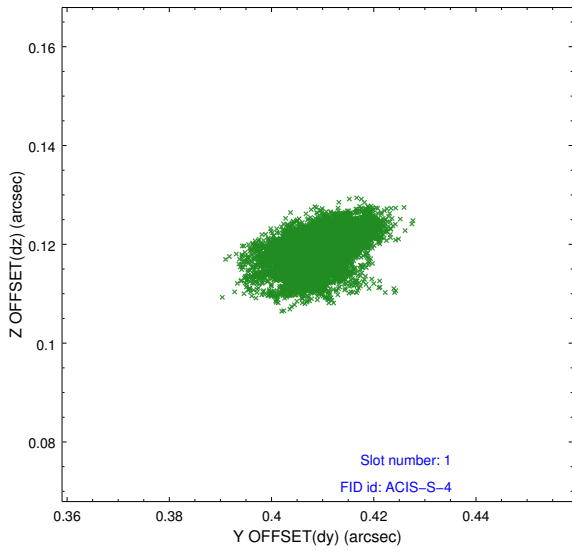


2.5 FID Slots

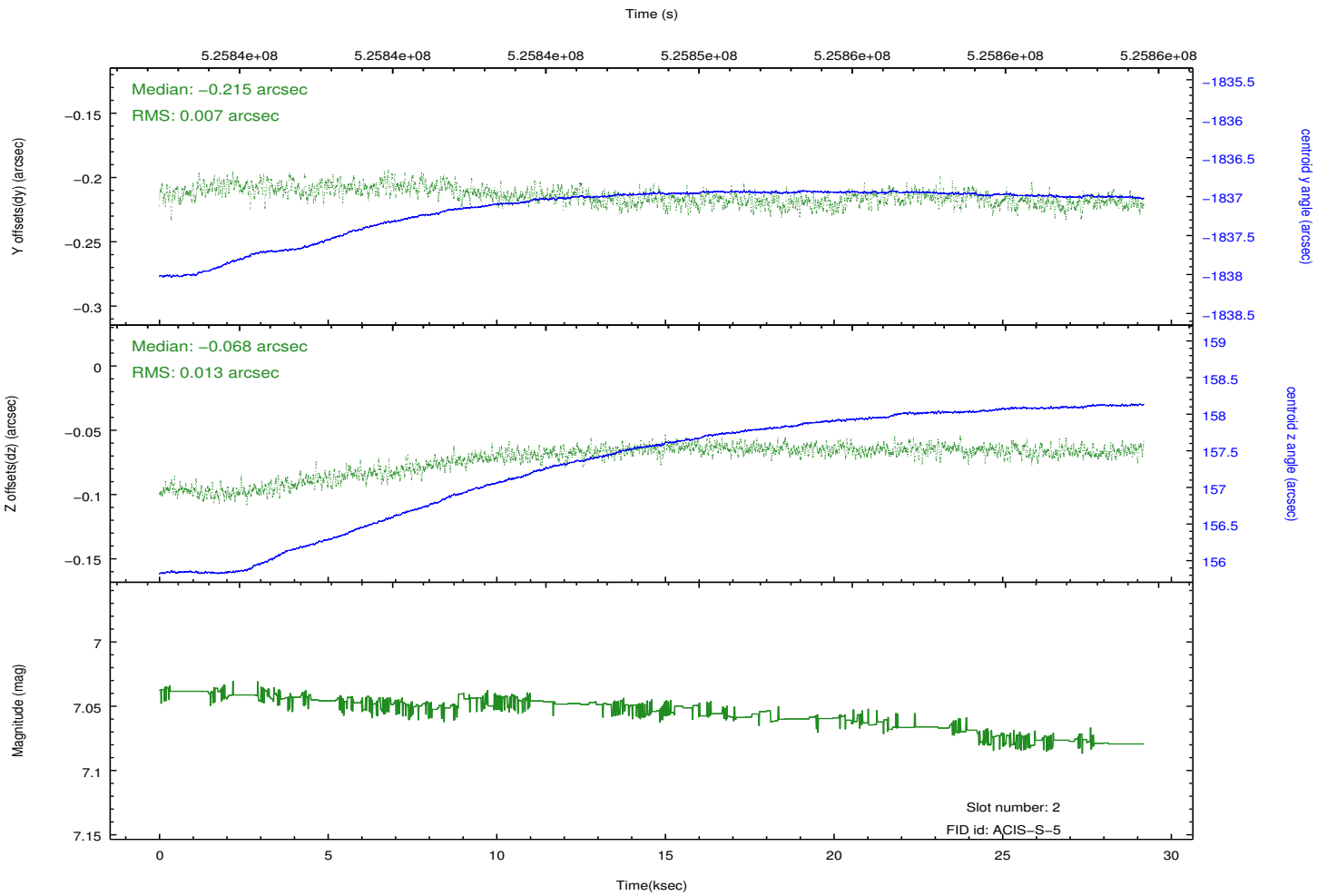
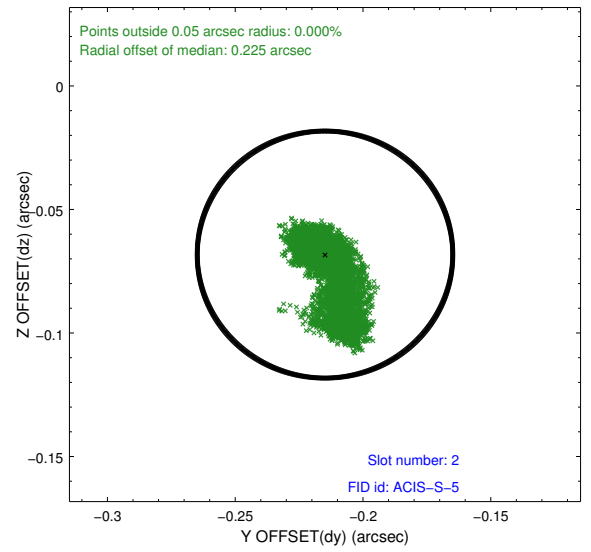
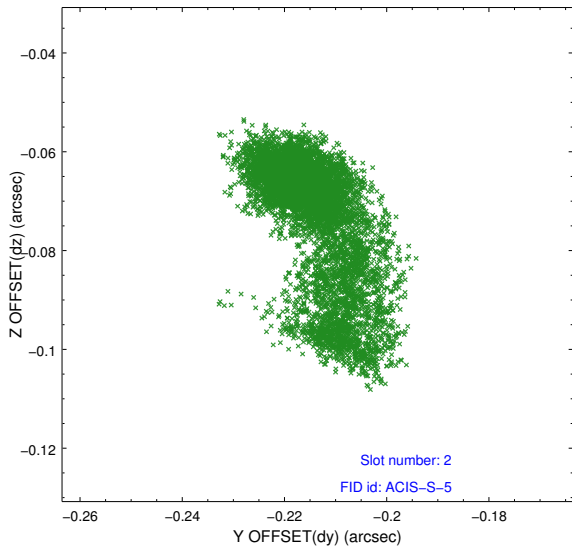
2.5.1 Slot 0



2.5.2 Slot 1



2.5.3 Slot 2



A Summary

A.1 Status

V&V Scientist	Joy Nichols
V&V Date (YYYY-MM-DD)	2014.09.03
V&V Edition	1
V&V Disposition and Status	OK
V&V Charge Time	29.15475

A.2 Comments

The slot 1 radial offset of 0.426 arcsec is acceptable.