

V&V Reference Report

L2 ASCDS Version : 10.3.3

Observation 17404 - L2 Version 1
Chandra X-Ray Center

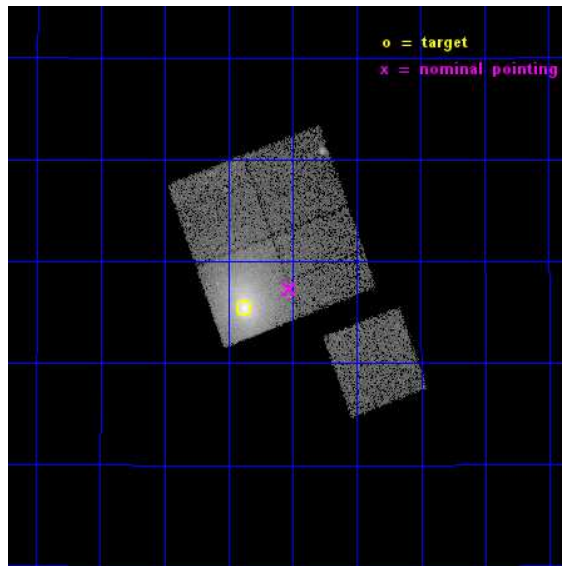
L2 Processing Date : Apr 7 2015

Contents

1	Front	2
2	OBI	3
2.1	OBI	3
2.1.1	Images	3
2.1.2	Bias	3
2.1.3	Parameters	4
2.1.4	Events	4
2.2	Compared Parameters	5
2.3	Aspect	6
2.4	Star Slots	9
2.4.1	Slot 3	9
2.4.2	Slot 4	10
2.4.3	Slot 5	11
2.4.4	Slot 6	12
2.4.5	Slot 7	13
2.5	FID Slots	14
2.5.1	Slot 0	14
2.5.2	Slot 1	15
2.5.3	Slot 2	16
A	Summary	17
A.1	Status	17
A.2	Comments	17

1 Front

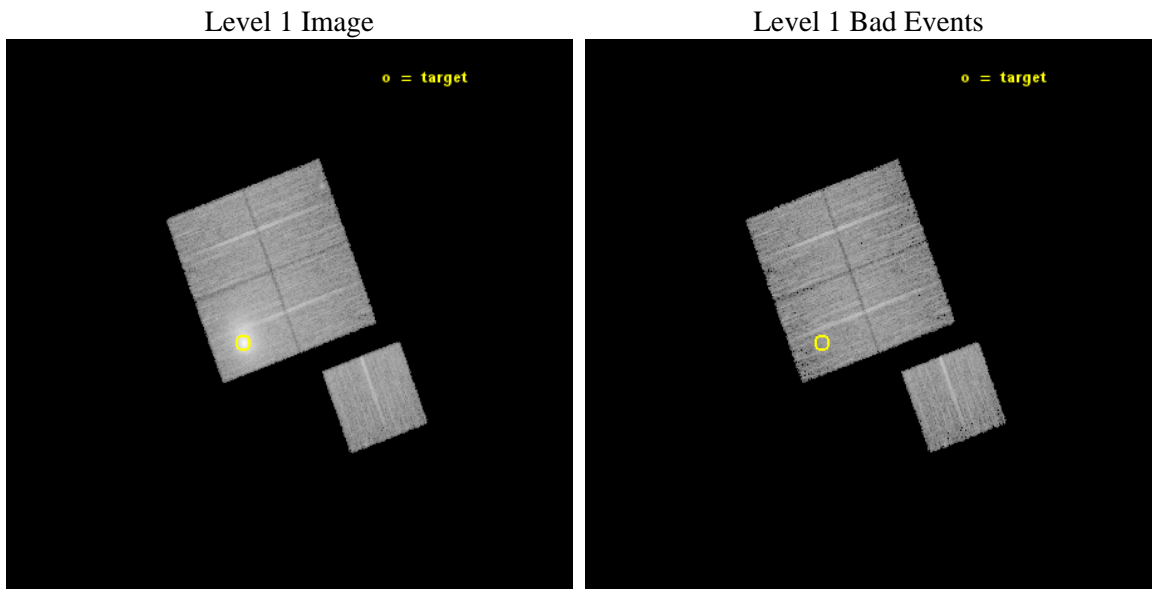
seq_num	890104	Sequence number
obs_id	17404	Observation id
title	AO-16 Calibration Observations of A1795	Proposal title
observer	Dr. CXC Calibration	Principal investigator
object	A1795	Source name
dtcycle	0	
cycle	P	events from which exps? Prim/Second/Both
ra_targ	207.219583	Observer's specified target RA [deg]
dec_targ	26.590833	Observer's specified target Dec [deg]
ra_nom	207.1314605461	Nominal RA [deg]
dec_nom	26.622309219021	Nominal Dec [deg]
roll_nom	159.60705646959	Nominal Roll [deg]
revision	1	Processing version of data
ontime	15081.50011611	Sum of GTIs [s]
livetime	14884.449214254	Livetime [s]
ontime0	15081.50011611	Sum of GTIs [s]
ontime1	15081.50011611	Sum of GTIs [s]
ontime2	15081.50011611	Sum of GTIs [s]
ontime3	15081.50011611	Sum of GTIs [s]
ontime6	15081.50011611	Sum of GTIs [s]
l2events	123716	Number of level 2 events



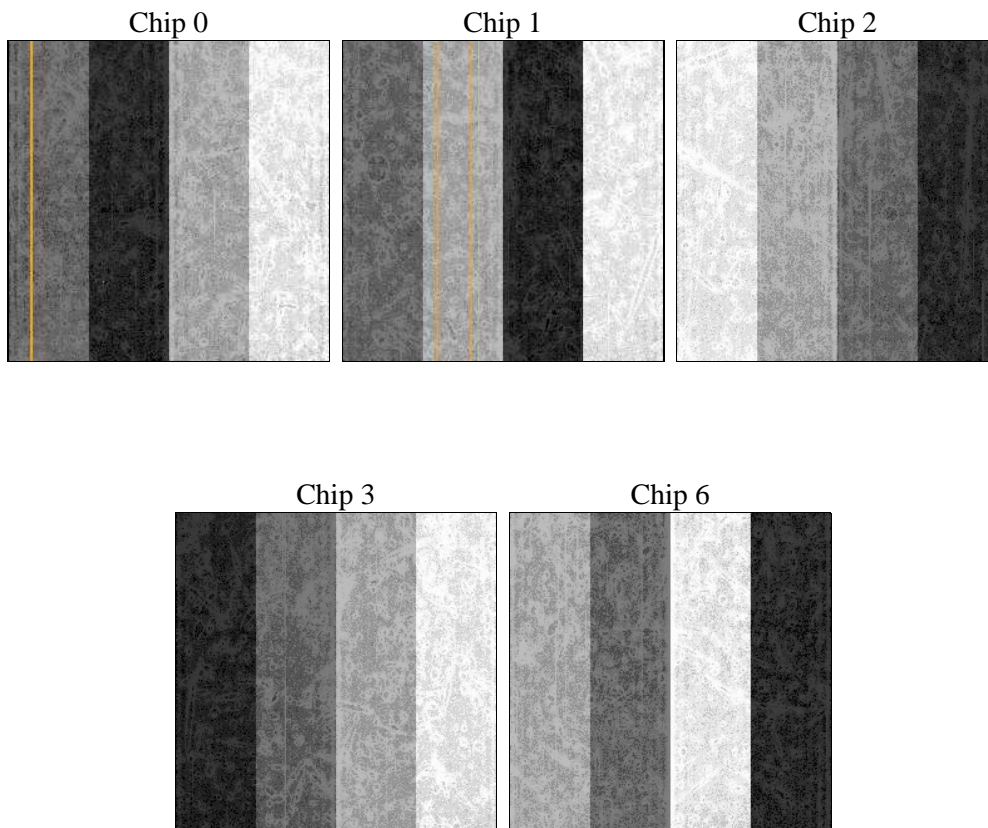
2 OBI

2.1 OBI

2.1.1 Images



2.1.2 Bias



2.1.3 Parameters

obi_num	0	Obi number	sched_exp_time	15000.000000	[s] Scheduled observation exposure time
ascdsver	10.3.3	Processing system revision	ontime	15081.50011611	Sum of GTIs [s]
caldsver	4.6.7	 	ontime0	15081.50011611	Sum of GTIs [s]
date	2015-04-07T14:41:54	Date and time of file creation	ontime1	15081.50011611	Sum of GTIs [s]
revision	1	Processing version of data	ontime2	15081.50011611	Sum of GTIs [s]
			ontime3	15081.50011611	Sum of GTIs [s]
			ontime6	15081.50011611	Sum of GTIs [s]
			l1events	440404	Number of level 1 events

2.1.4 Events

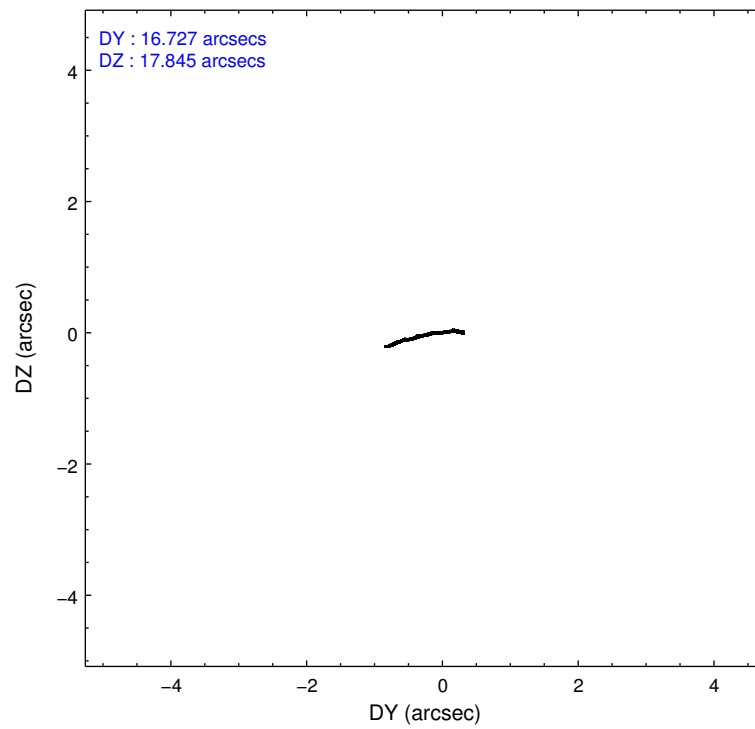
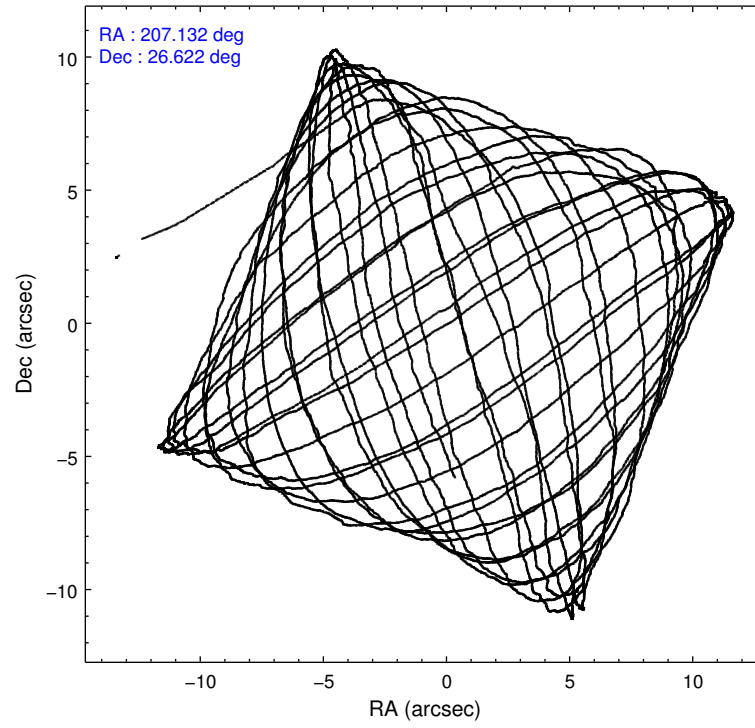
	ccd 0	ccd 1	ccd 2	ccd 3	ccd 6
level 1 events	68039	72937	72740	155118	71570
rejected events	58745	60845	62105	63684	62445
rejected %	86%	83%	85%	41%	87%

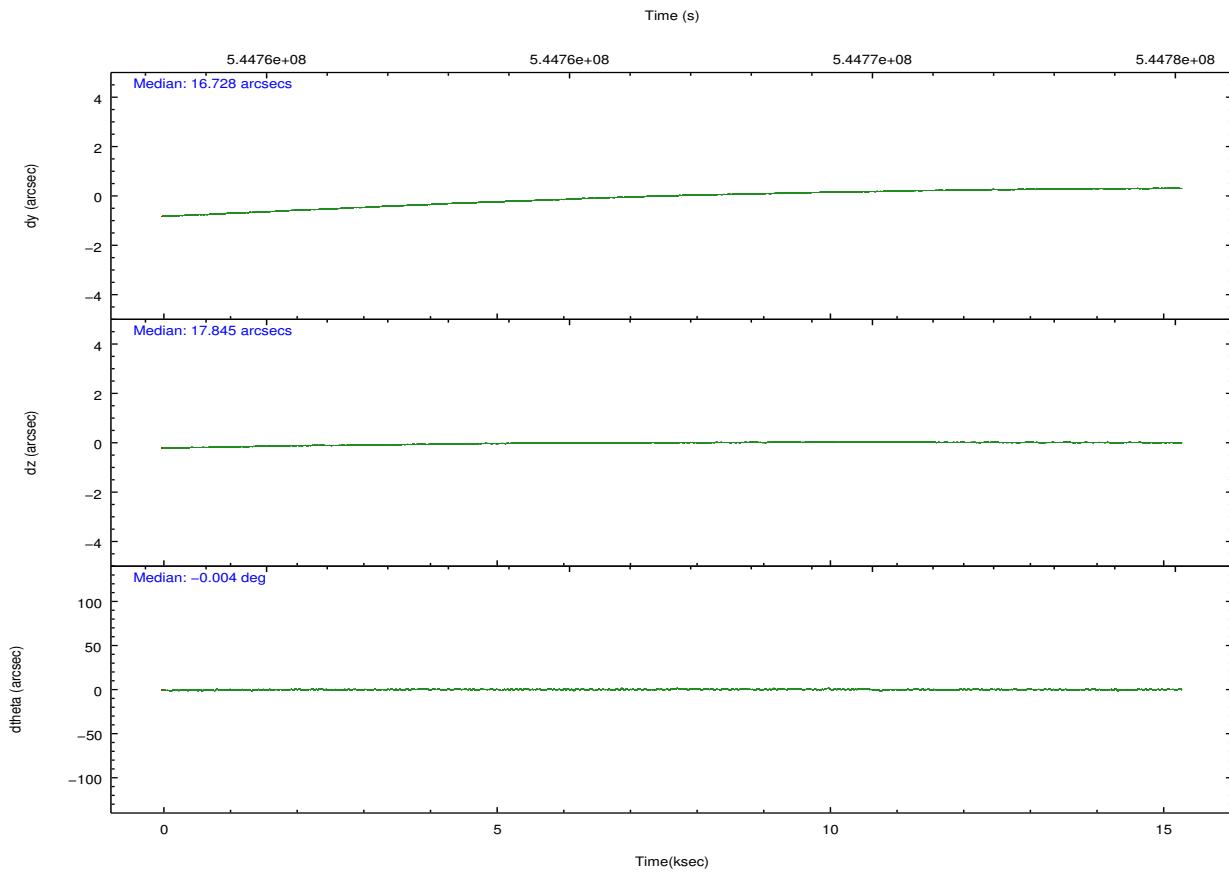
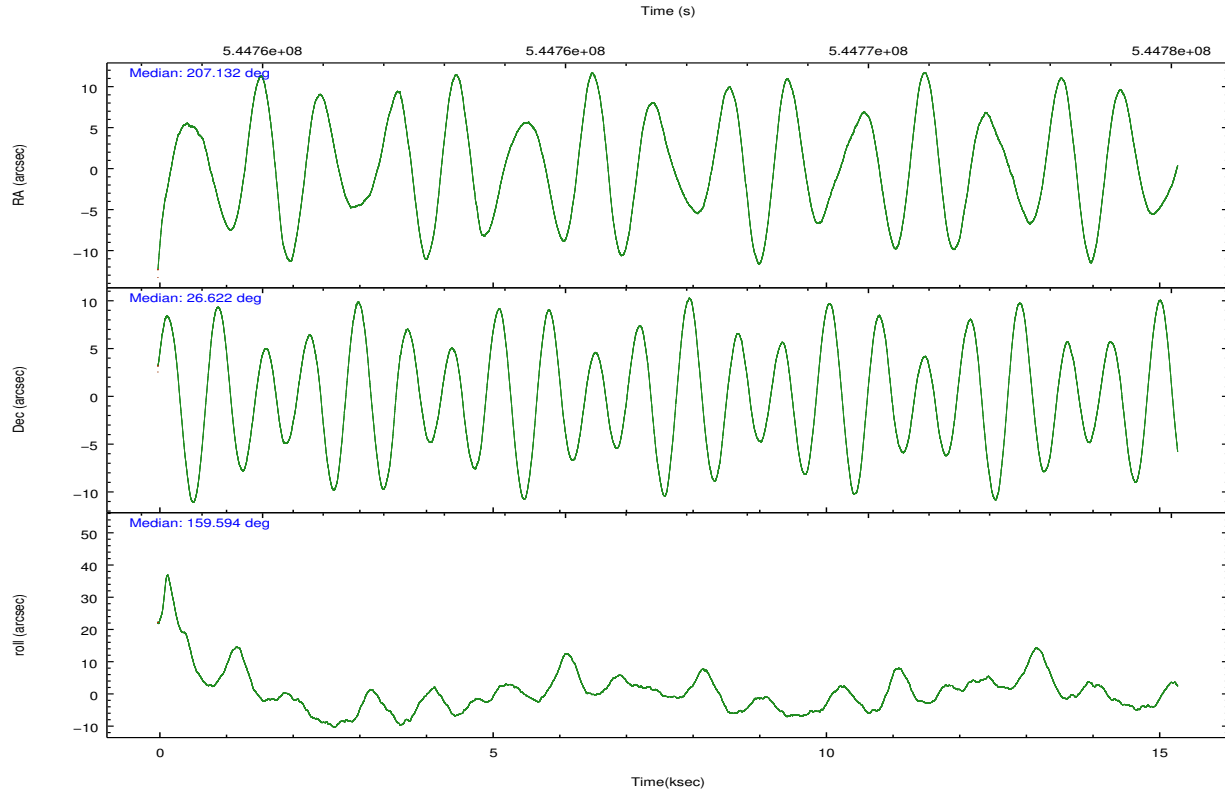
	ccd 0	ccd 1	ccd 2	ccd 3	ccd 6
grade 0 events	3520	5213	5020	69541	3192
	5%	7%	6%	44%	4%
grade 1 events	39	38	44	267	32
	0%	0%	0%	0%	0%
grade 2 events	2177	2661	2157	10536	2036
	3%	3%	2%	6%	2%
grade 3 events	924	1016	909	3626	934
	1%	1%	1%	2%	1%
grade 4 events	828	1009	908	3705	855
	1%	1%	1%	2%	1%
grade 5 events	3311	3397	3165	4097	3662
	4%	4%	4%	2%	5%
grade 6 events	1849	2196	1641	4037	2110
	2%	3%	2%	2%	2%
grade 7 events	55391	57407	58896	59309	58749
	81%	78%	80%	38%	82%

2.2 Compared Parameters

Parameter	Planned	Actual	Parameter	Planned	Actual
Instrument	ACIS	ACIS	Obspar format version number	7	7
Detector	ACIS-01236	ACIS-01236	Obspar file type	PREDICTED	ACTUAL
Grating	NONE	NONE	Obspar update status	NONE	UPDATED
Data mode	VFAINT	VFAINT	Number of optional ACIS chips dropped	0	0
Observation mode	POINTING	POINTING	On-chip summing requested	N	N
[deg] Pointing RA	207.161901	207.1314605460994	Subarray requested	NONE	NONE
[deg] Pointing Dec	26.626983	26.6223092190208	Alternating exposures requested	N	N
[deg] Pointing Roll	159.384729	159.6070564695931	[s] Primary exposure time	0.000000	3.1
[s] Window start time (MET)	544233667.184000	544233667.184000			
[s] Window stop time (MET)	546739267.184000	546739267.184000			
[mm] SIM focus pos	-0.782348	-0.7809083437167272			
[mm] SIM defocus	0	0.001439871863259334			
[mm] SIM translation stage pos	-219.472463	-219.4670397272677			
[mm] SIM translation stage offset	-14.12	-14.12541327566197			
[s] Observation start time (MET)	544759311.184000	544758312.16599			
Observation start date	2015-04-07T02:00:44	2015-04-07T01:45:12			
[s] Observation end time (MET)	544774311.184000	544775208.26693			
Observation end date	2015-04-07T06:10:44	2015-04-07T06:26:48			
Read mode	TIMED	TIMED			

2.3 Aspect





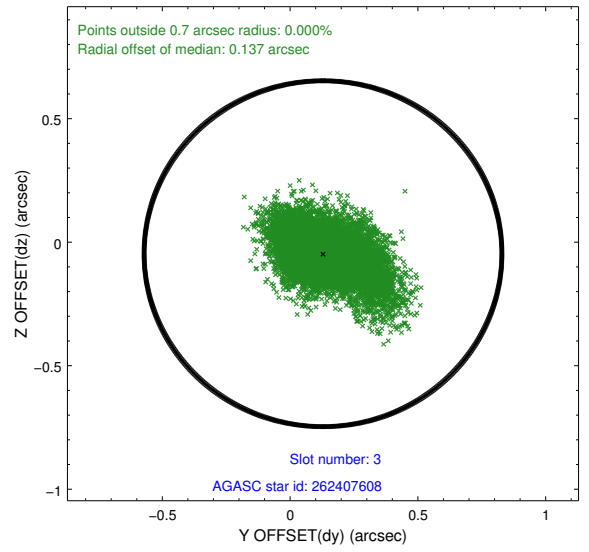
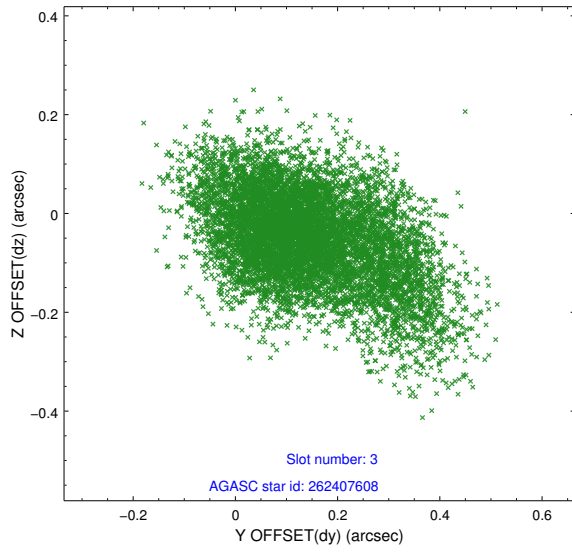
Slot Statistics

slot	status	used	id	mag	n_pts	med_dy	med_dz	dr1	dr2	ra	dec	mean_y	mean_z
0	FID		ACIS-I-1	7.16	3732	0.225	-0.209	0.011	0.020	0.000000	0.000000	922.78	-1131.73
1	FID		ACIS-I-5	7.18	3732	-0.431	0.145	0.007	0.012	0.000000	0.000000	-1825.89	765.79
2	FID		ACIS-I-6	7.20	3731	0.114	0.135	0.008	0.014	0.000000	0.000000	387.81	1410.71
3	GUIDE	used	262407608	9.32	7460	0.129	-0.047	0.157	0.275	207.378401	26.435507	-895.81	399.18
4	GUIDE	used	262408096	9.31	7452	-0.203	-0.104	0.158	0.235	207.011678	26.515421	311.80	546.55
5	GUIDE	used	262408936	9.62	7454	-0.091	0.047	0.219	0.335	207.154731	26.726554	147.56	-326.63
6	GUIDE	used	262408512	7.99	7461	0.086	0.312	0.116	0.181	207.800210	27.128796	-1275.63	-2415.26
7	GUIDE	used	262411960	9.64	7458	0.061	-0.196	0.223	0.337	207.327895	25.881727	-1448.36	2321.21

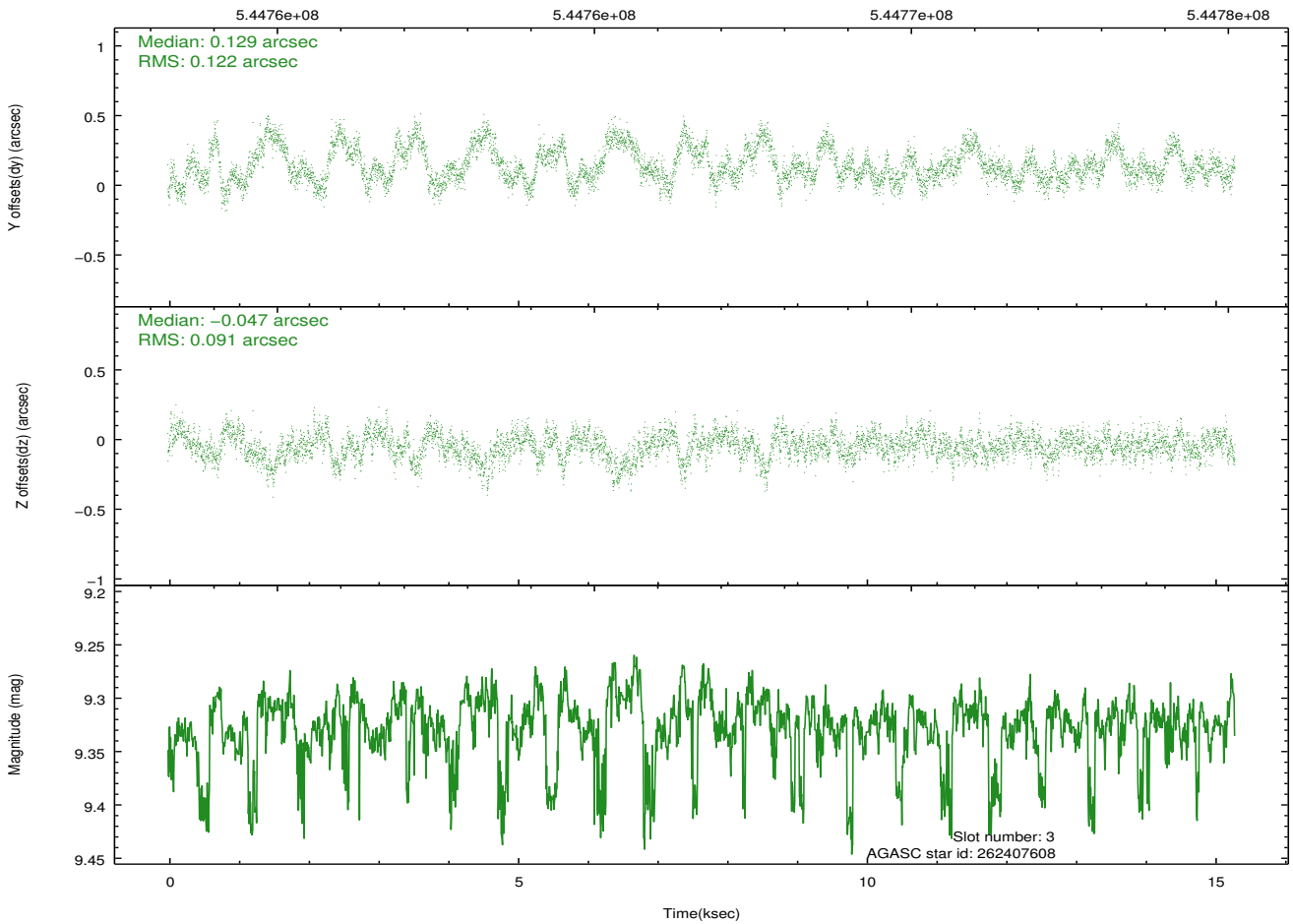
∞

2.4 Star Slots

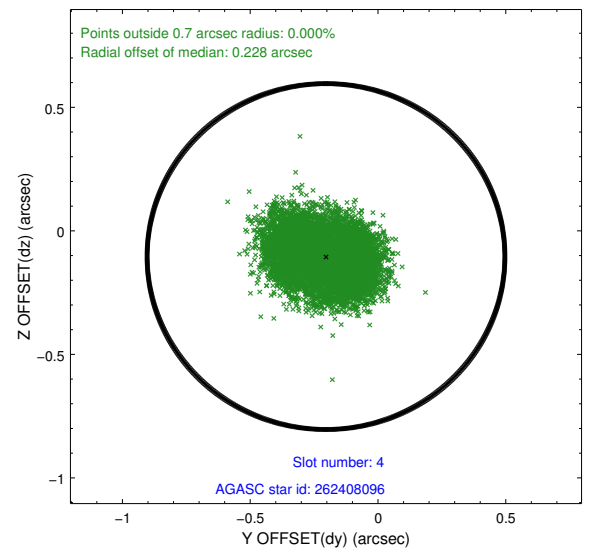
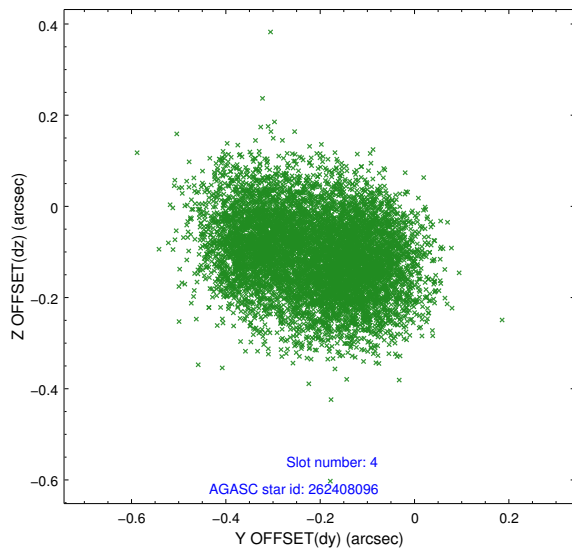
2.4.1 Slot 3



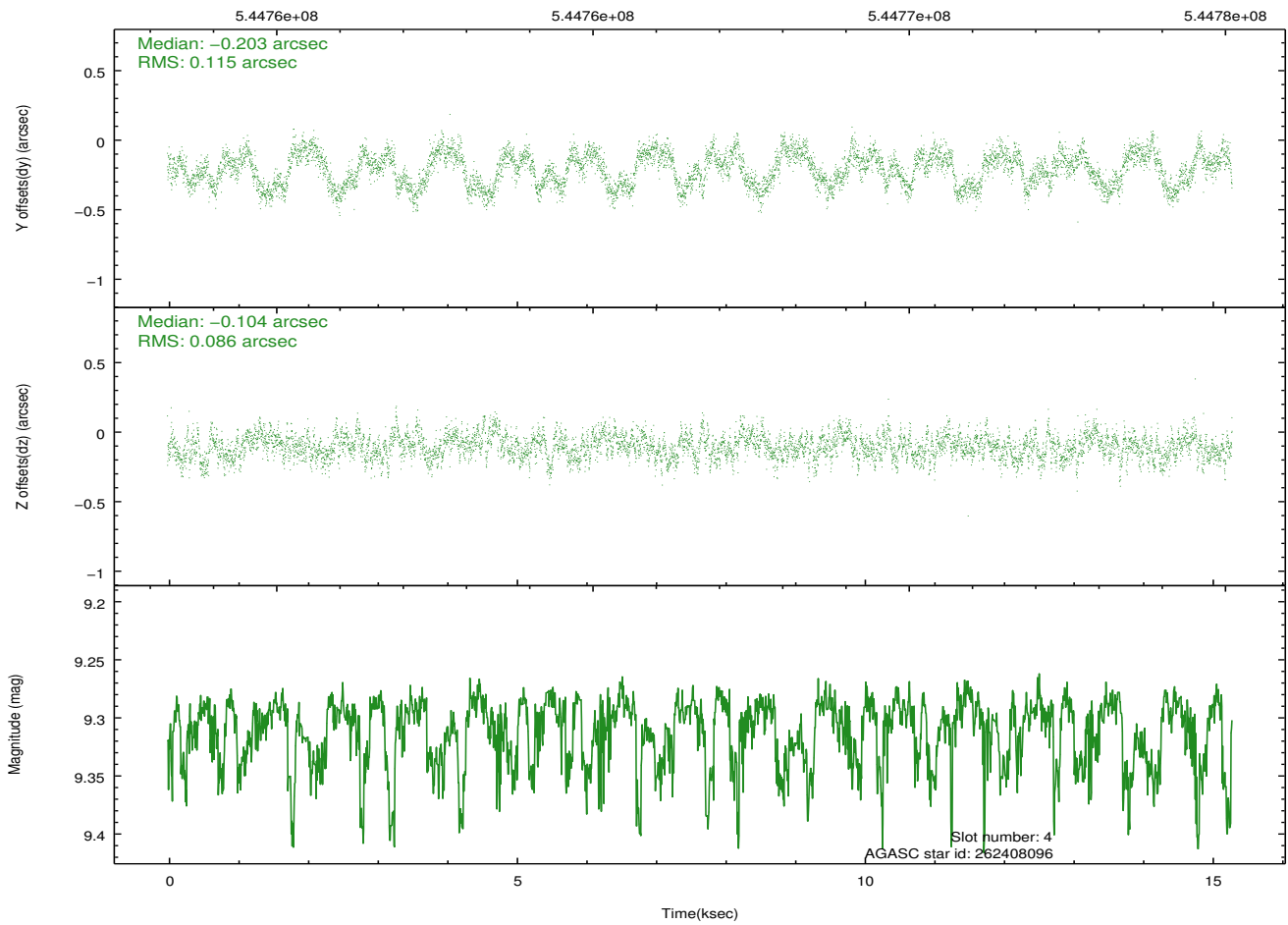
Time (s)



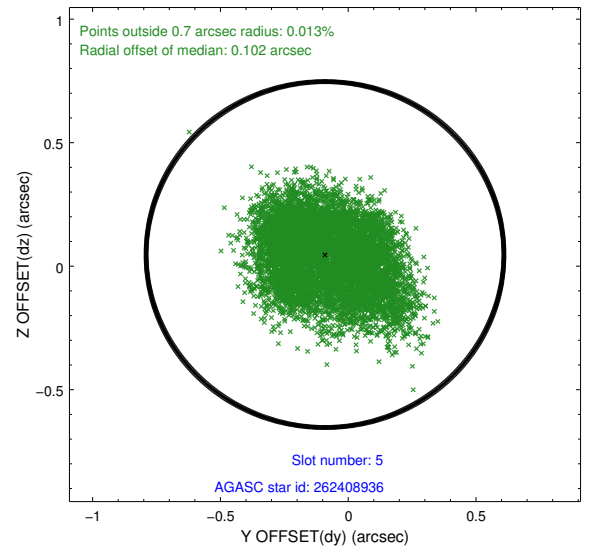
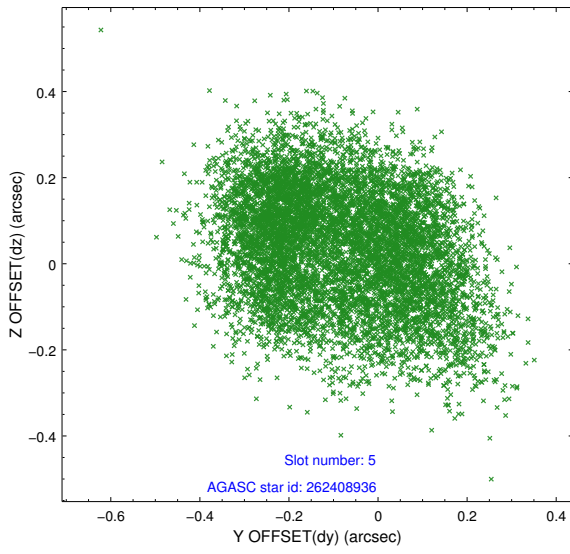
2.4.2 Slot 4



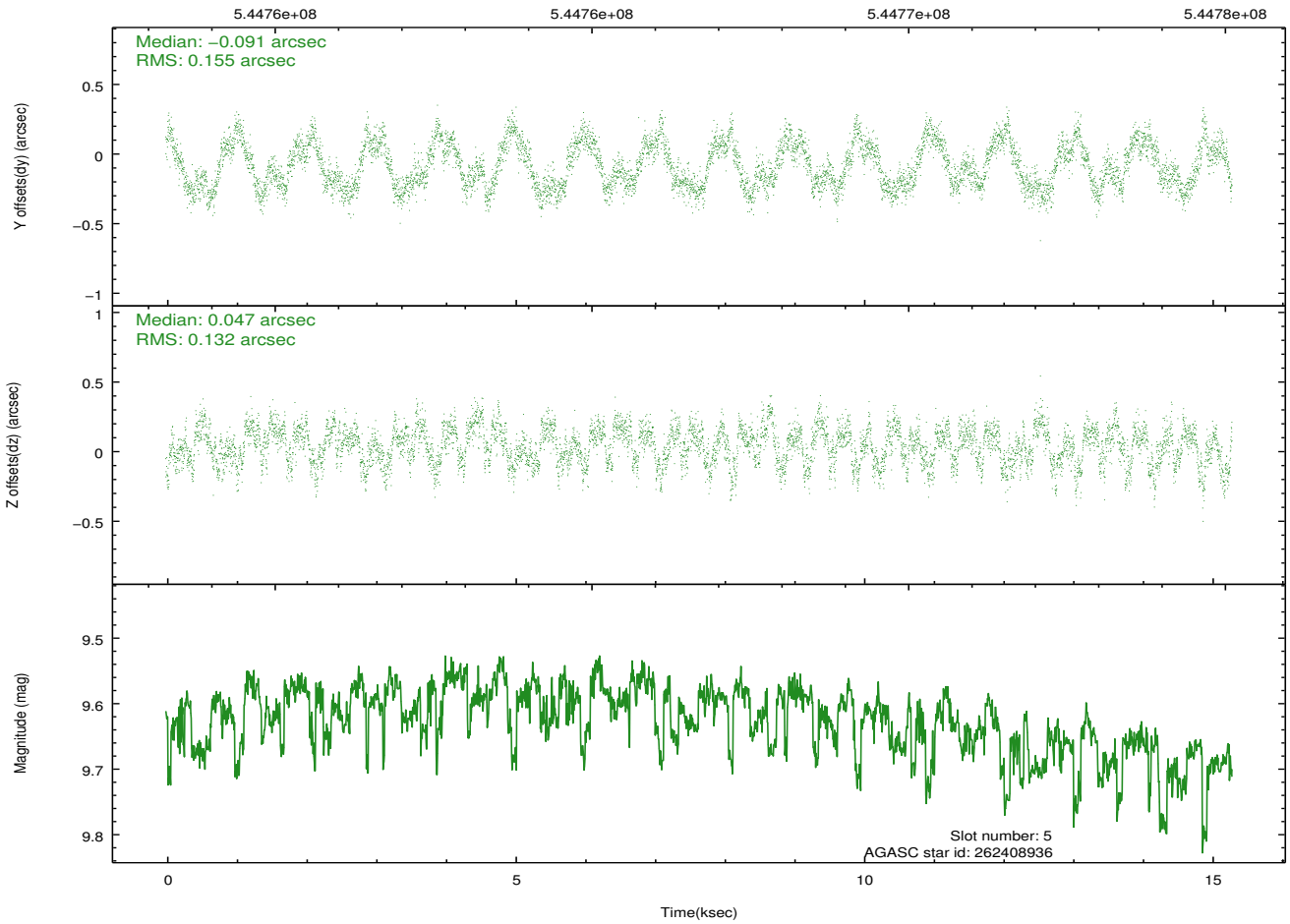
Time (s)



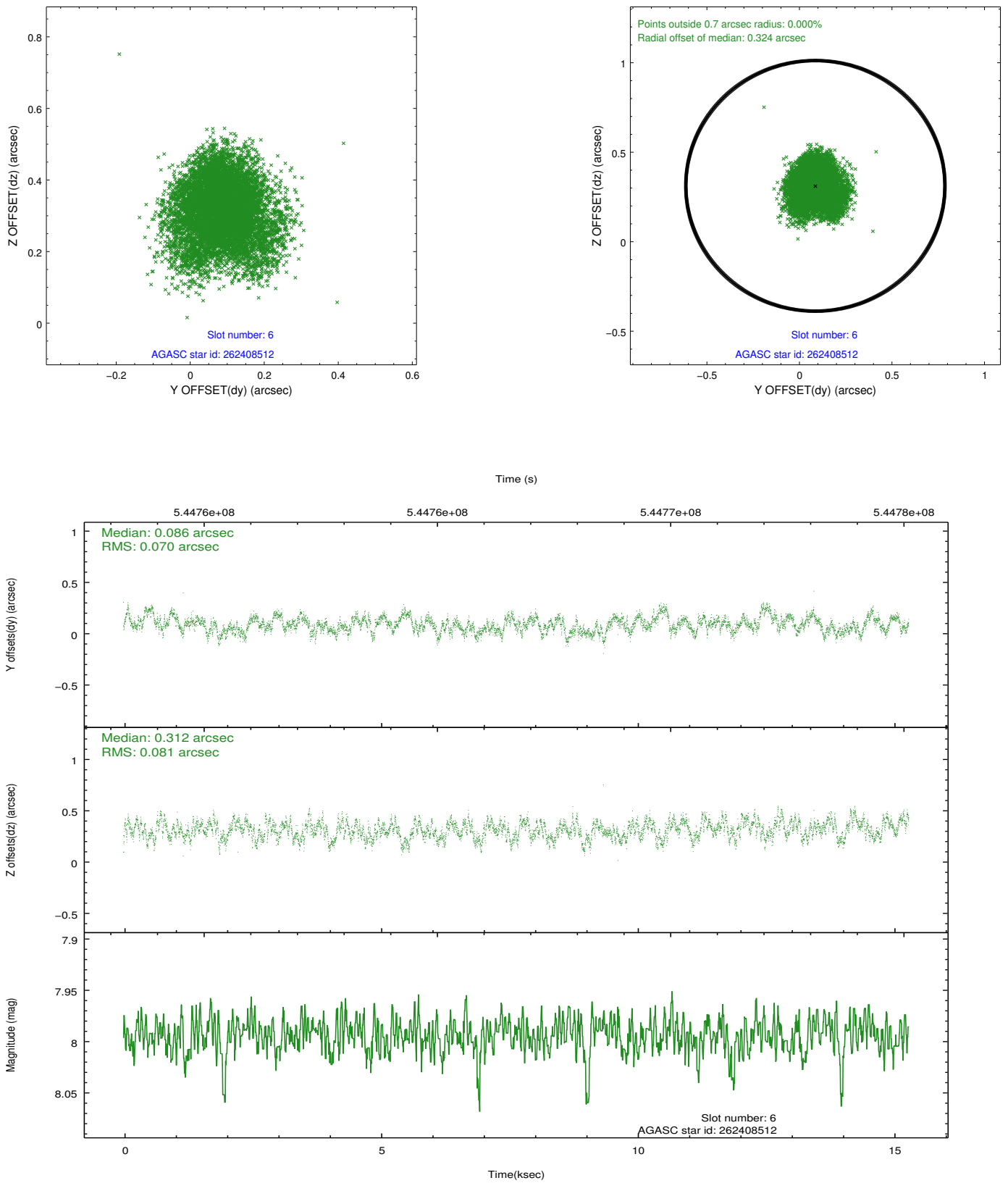
2.4.3 Slot 5



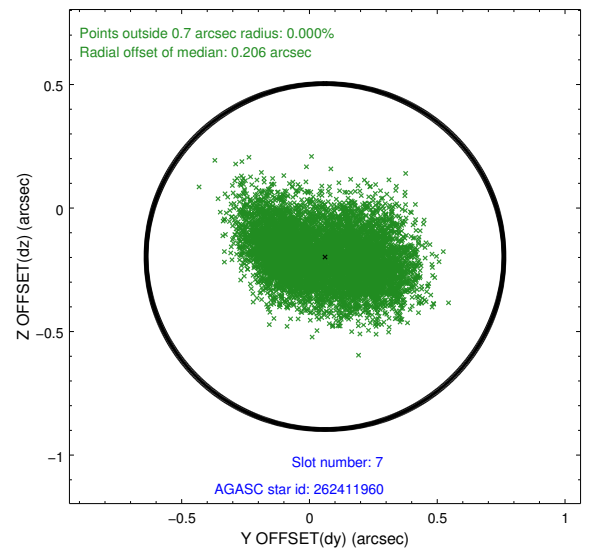
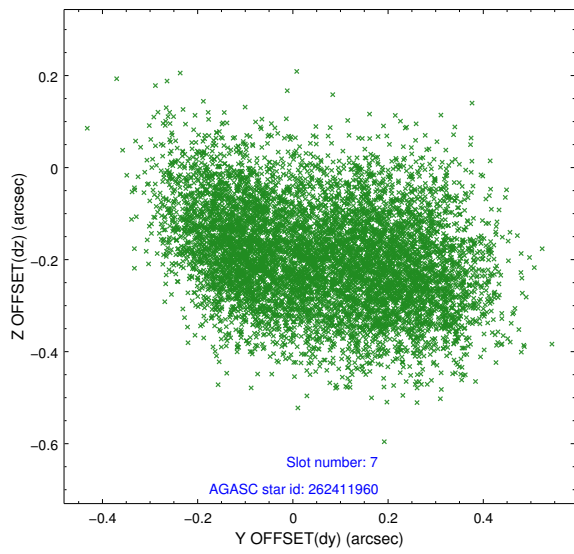
Time (s)



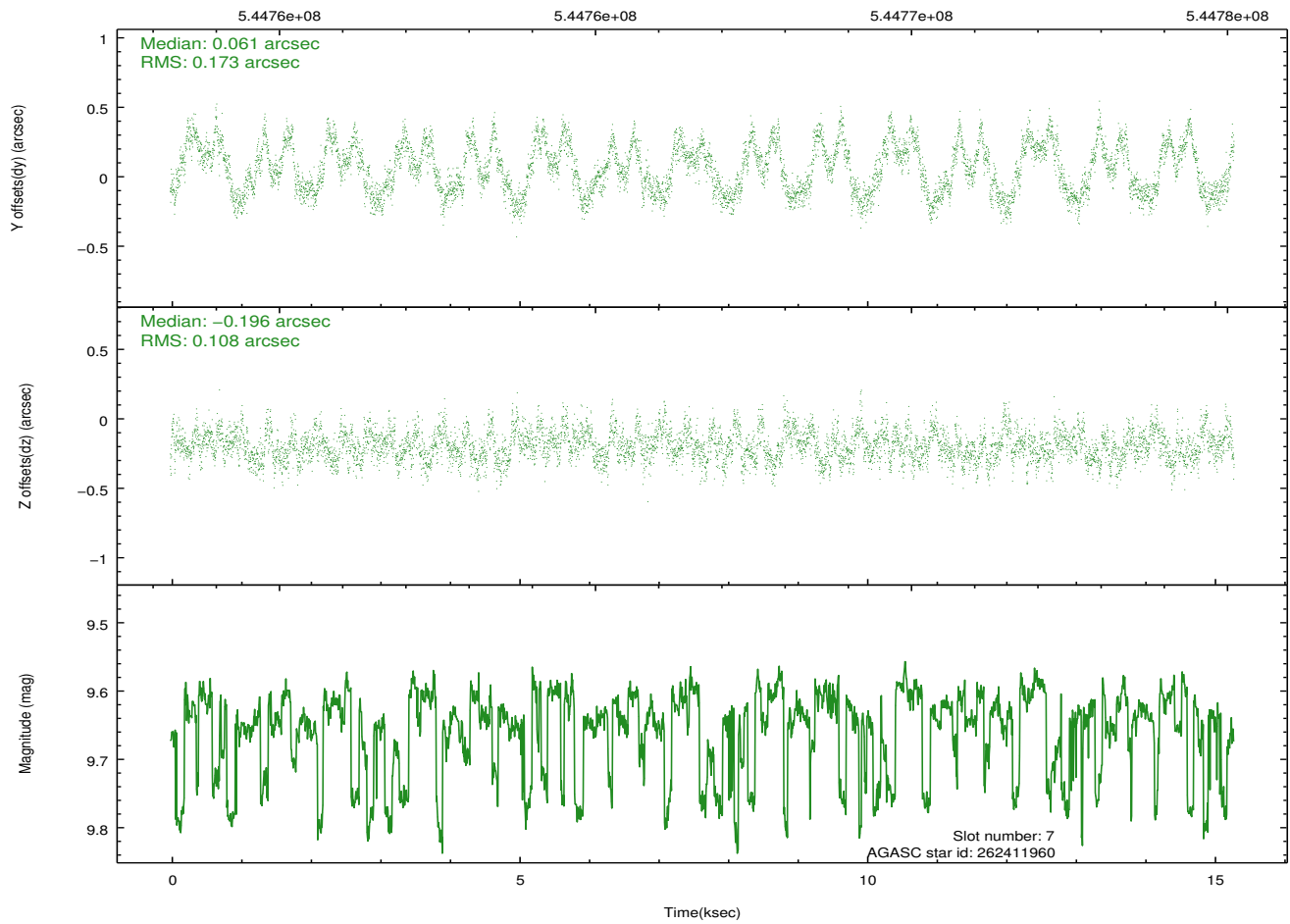
2.4.4 Slot 6



2.4.5 Slot 7

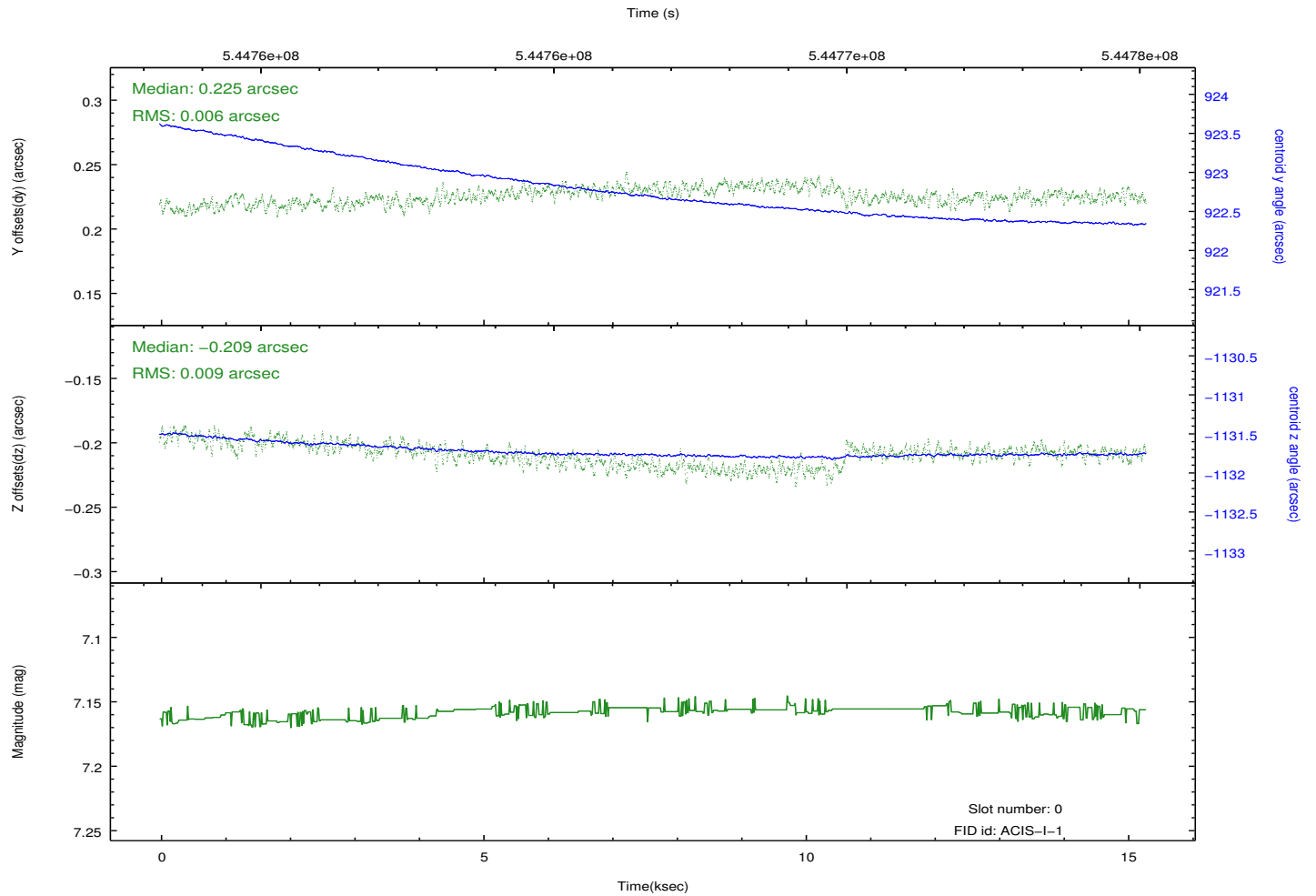
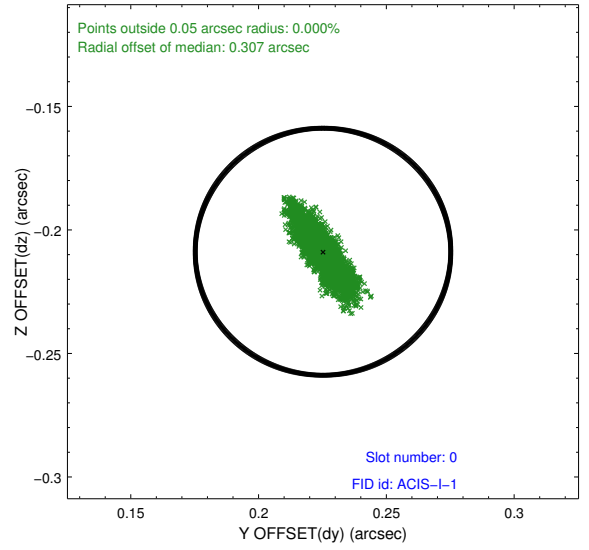
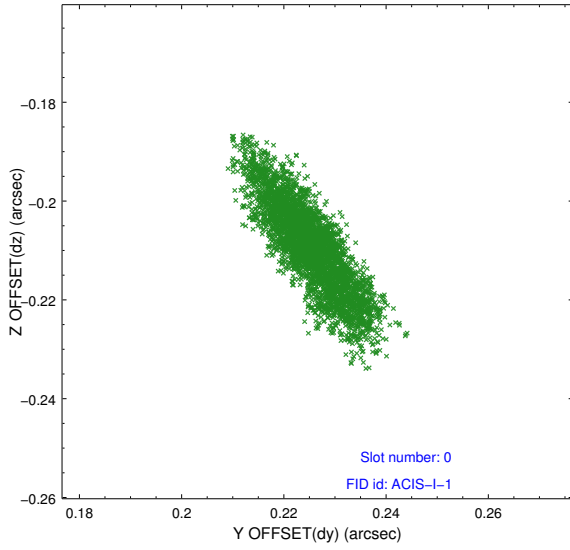


Time (s)

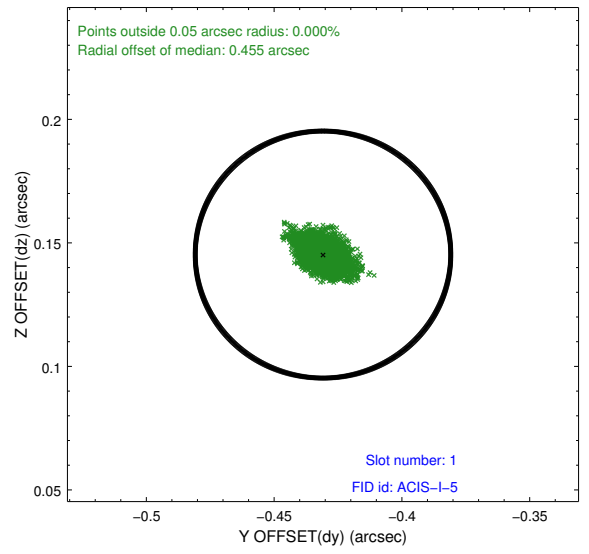
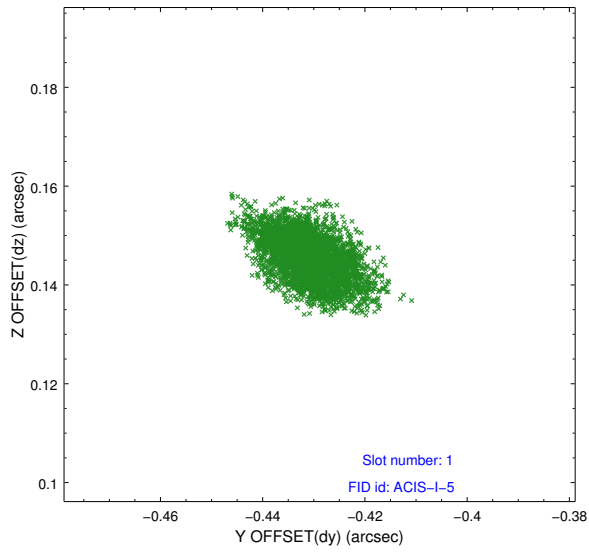


2.5 FID Slots

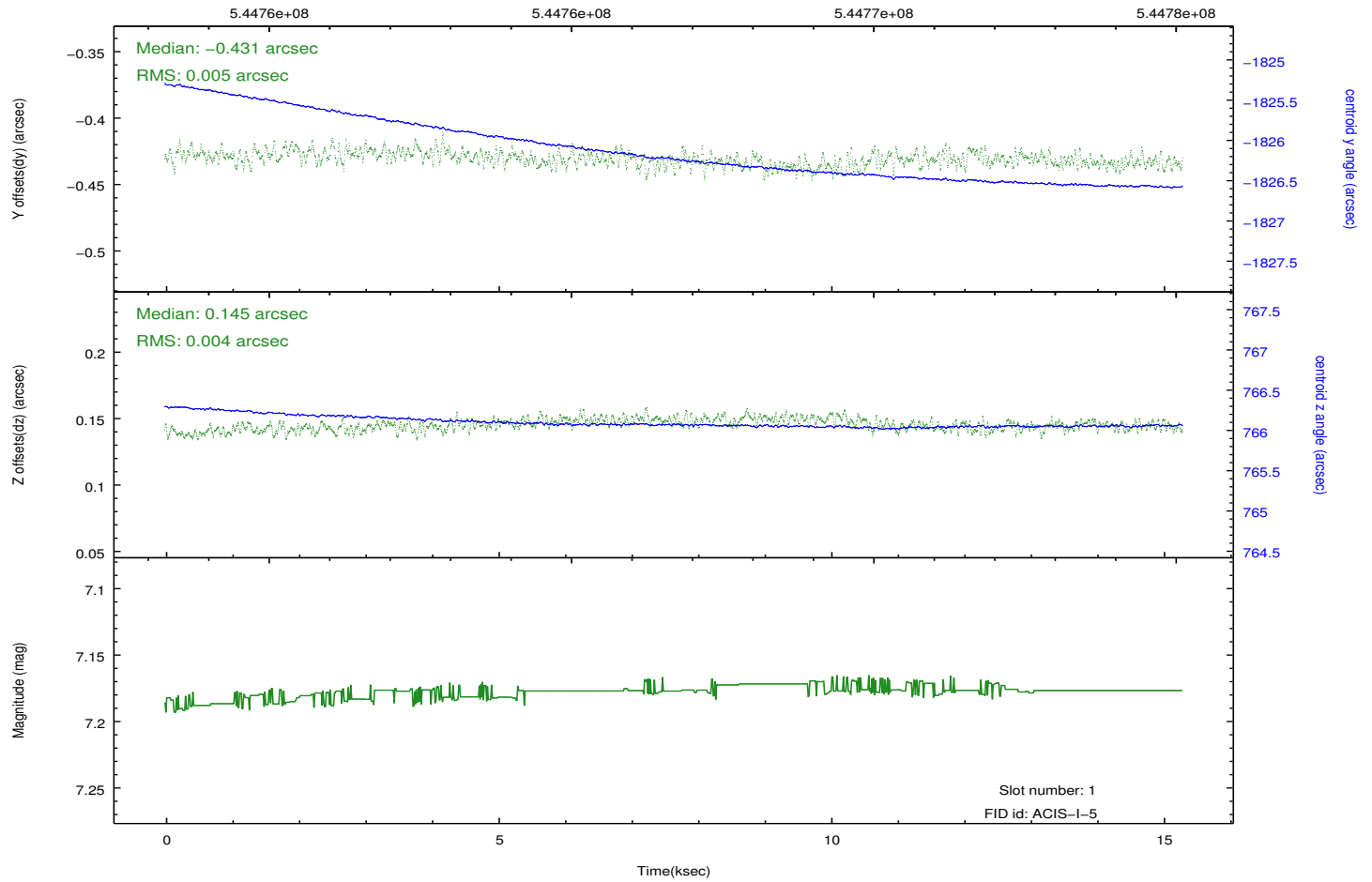
2.5.1 Slot 0



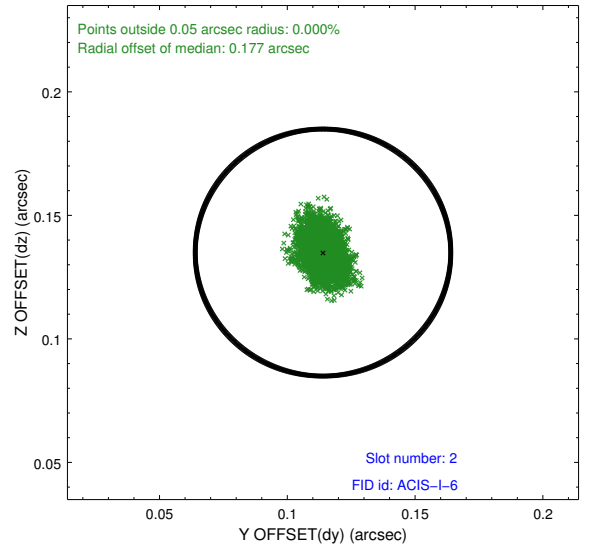
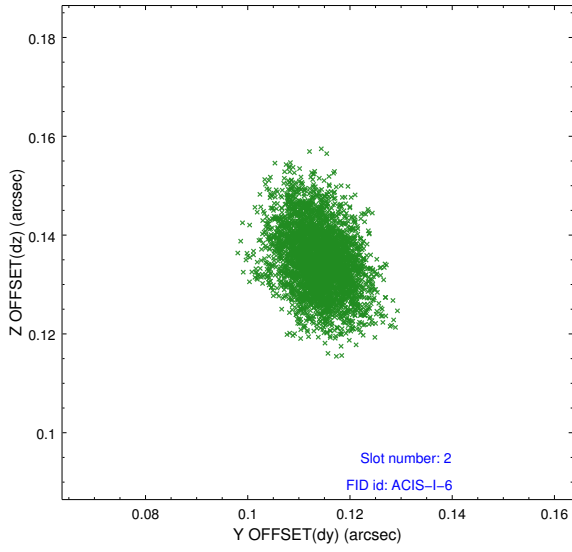
2.5.2 Slot 1



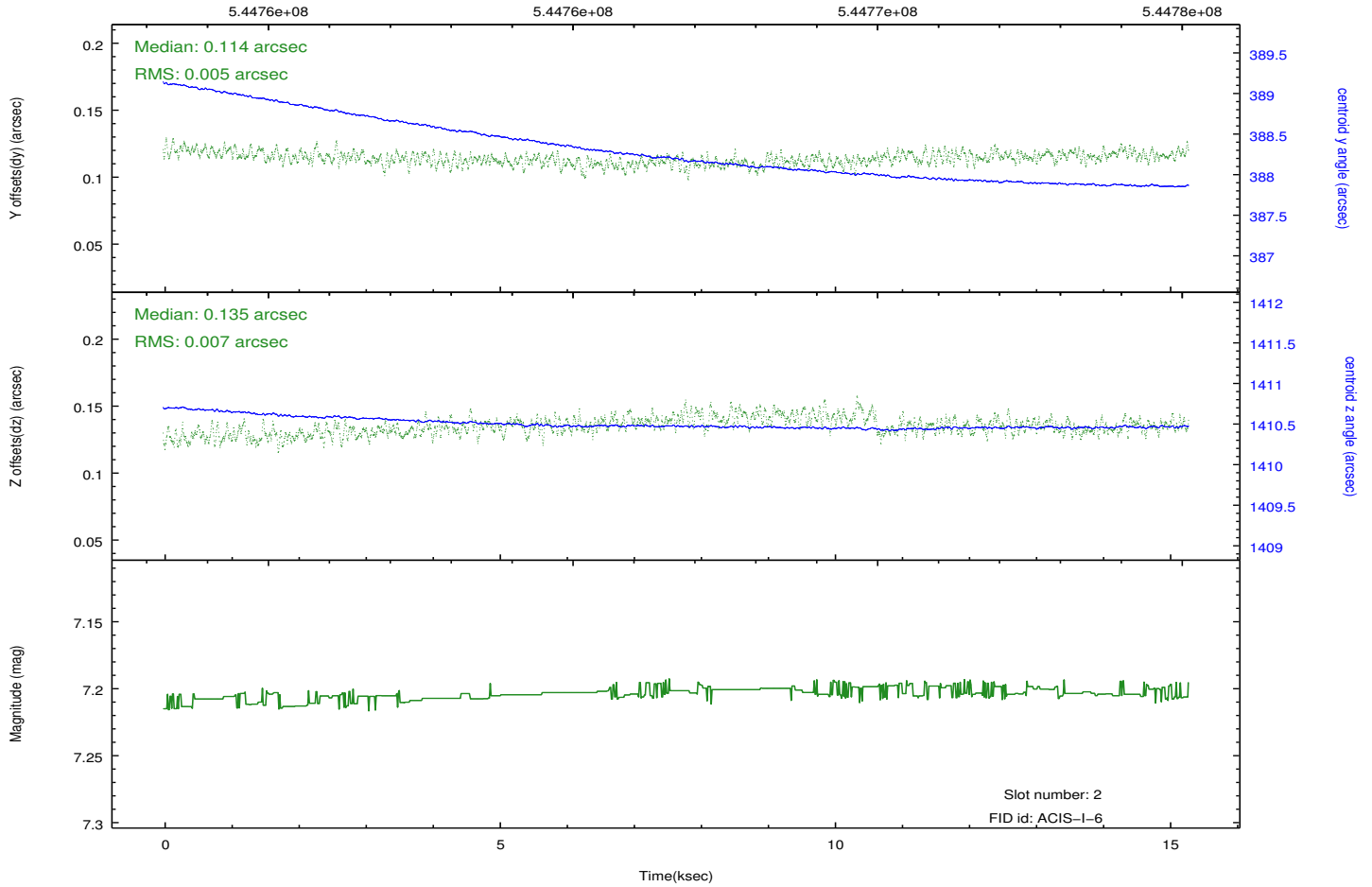
Time (s)



2.5.3 Slot 2



Time (s)



A Summary

A.1 Status

V&V Scientist	Beth Sundheim
V&V Date (YYYY-MM-DD)	2015.04.07
V&V Edition	1
V&V Disposition and Status	OK
V&V Charge Time	15.08150011611

A.2 Comments

Window preference met.