

V&V Reference Report

L2 ASCDS Version : 10.3.1

Observation 17574 - L2 Version 1
Chandra X-Ray Center

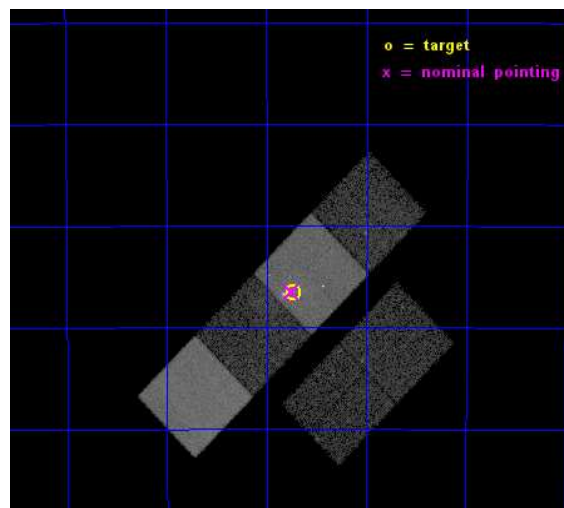
L2 Processing Date : Jan 11 2015

Contents

1	Front	2
2	OBI	3
2.1	OBI	3
2.1.1	Images	3
2.1.2	Bias	3
2.1.3	Parameters	4
2.1.4	Events	4
2.2	Compared Parameters	5
2.3	Aspect	6
2.4	Star Slots	9
2.4.1	Slot 3	9
2.4.2	Slot 4	10
2.4.3	Slot 5	11
2.4.4	Slot 6	12
2.4.5	Slot 7	13
2.5	FID Slots	14
2.5.1	Slot 0	14
2.5.2	Slot 1	15
2.5.3	Slot 2	16
A	Summary	17
A.1	Status	17
A.2	Comments	17

1 Front

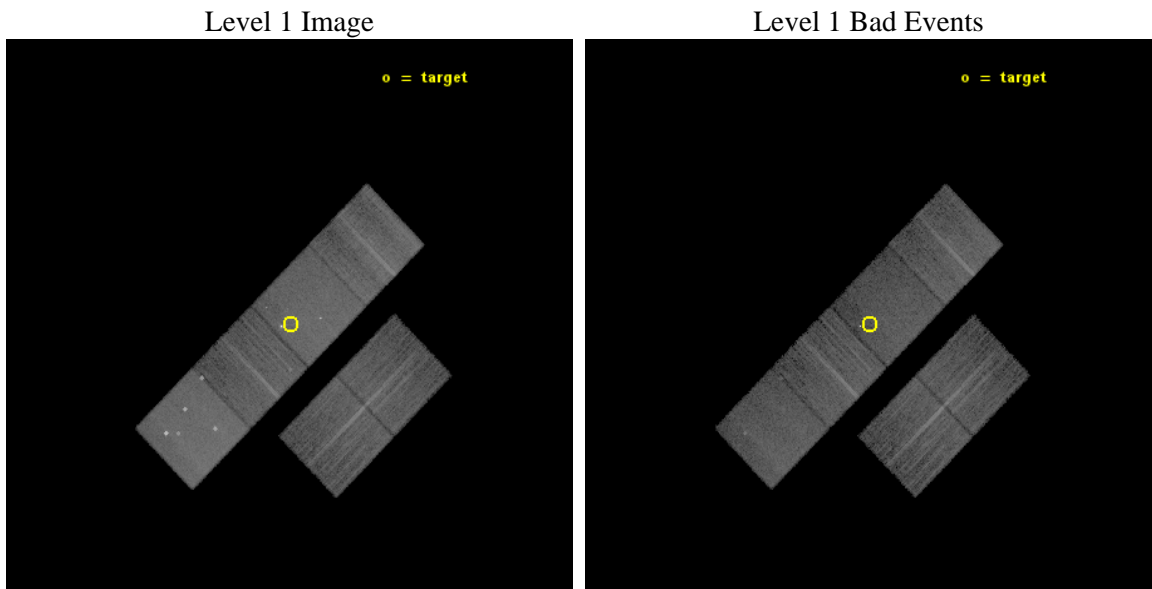
seq_num	702719	Sequence number
obs_id	17574	Observation id
title	Variability and particle acceleration in the jet of Pictor A	Propo
observer	Dr Martin Hardcastle	Principal investigator
object	Pictor A Jet	Source name
dtcycle	0	
cycle	P	events from which exps? Prim/Second/Both
ra_targ	79.933333	Observer's specified target RA [deg]
dec_targ	-45.775556	Observer's specified target Dec [deg]
ra_nom	79.937711996489	Nominal RA [deg]
dec_nom	-45.774930430988	Nominal Dec [deg]
roll_nom	315.15976097065	Nominal Roll [deg]
revision	1	Processing version of data
ontime	18860.10591507	Sum of GTIs [s]
livetime	18621.287897781	Livetime [s]
ontime2	18860.146955013	Sum of GTIs [s]
ontime3	18859.982795	Sum of GTIs [s]
ontime5	18860.064875007	Sum of GTIs [s]
ontime6	18860.023835063	Sum of GTIs [s]
ontime7	18860.10591507	Sum of GTIs [s]
ontime8	18859.941755056	Sum of GTIs [s]
l2events	173788	Number of level 2 events



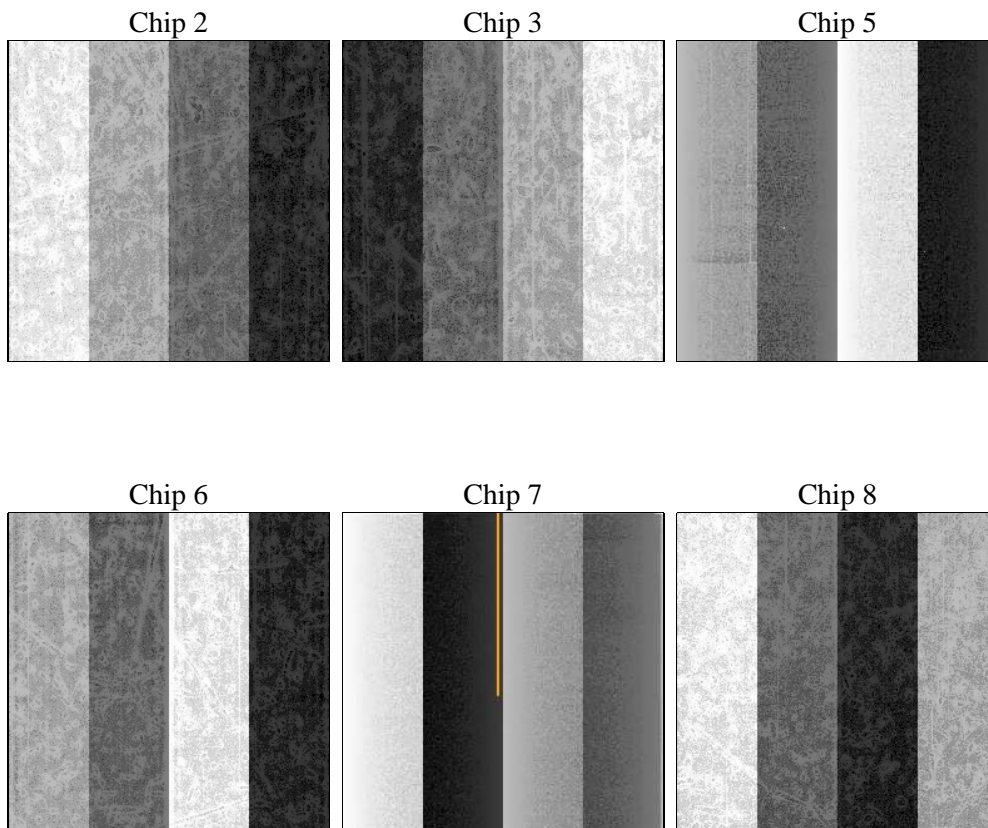
2 OBI

2.1 OBI

2.1.1 Images



2.1.2 Bias



2.1.3 Parameters

obi_num	1	Obi number	sched_exp_time	18900.000000	[s] Scheduled observation exposure time
ascdsver	10.3.1	Processing system revision	ontime	18860.10591507	Sum of GTIs [s]
caldsver	4.6.5	 	ontime2	18860.146955013	Sum of GTIs [s]
date	2015-01-11T16:04:27	Date and time of file creation	ontime3	18859.982795	Sum of GTIs [s]
revision	1	Processing version of data	ontime5	18860.064875007	Sum of GTIs [s]
			ontime6	18860.023835063	Sum of GTIs [s]
			ontime7	18860.10591507	Sum of GTIs [s]
			ontime8	18859.941755056	Sum of GTIs [s]
			l1events	728849	Number of level 1 events

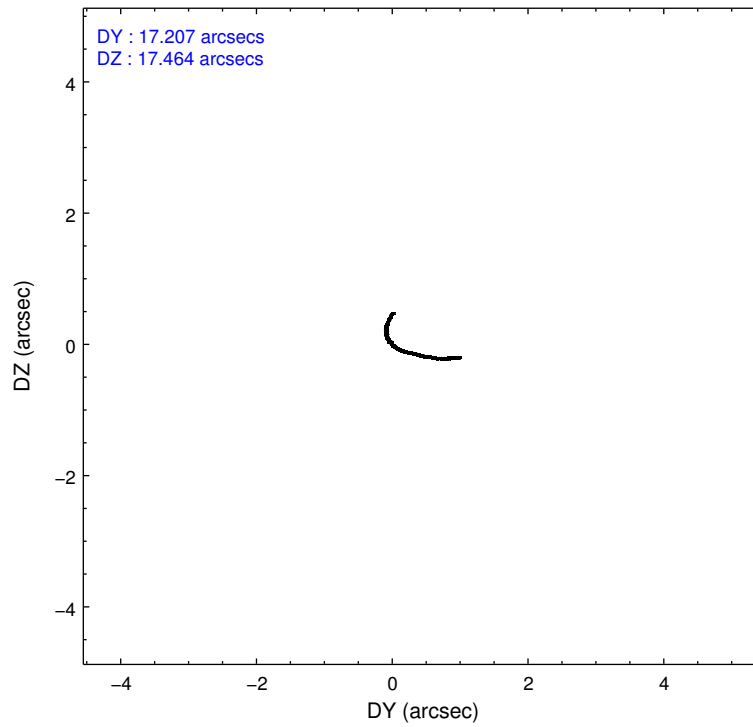
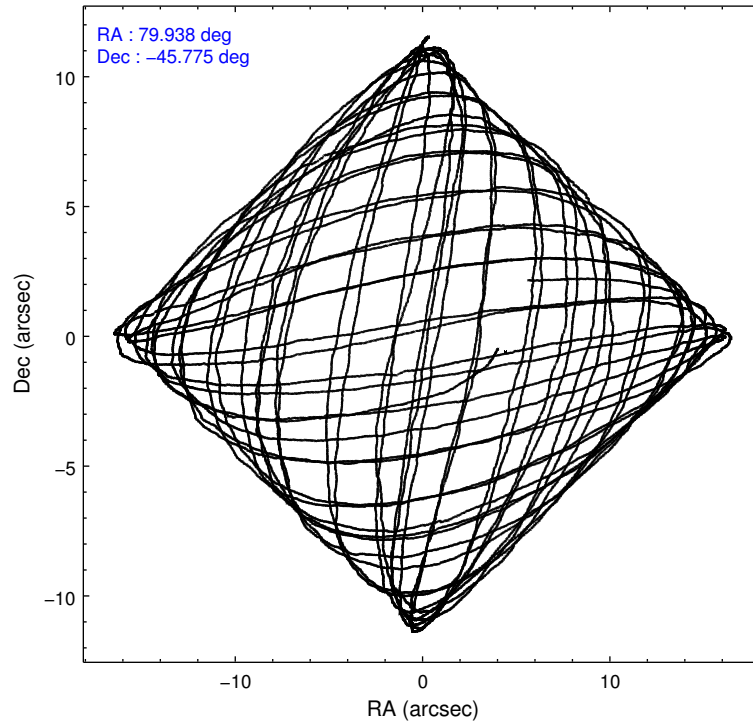
2.1.4 Events

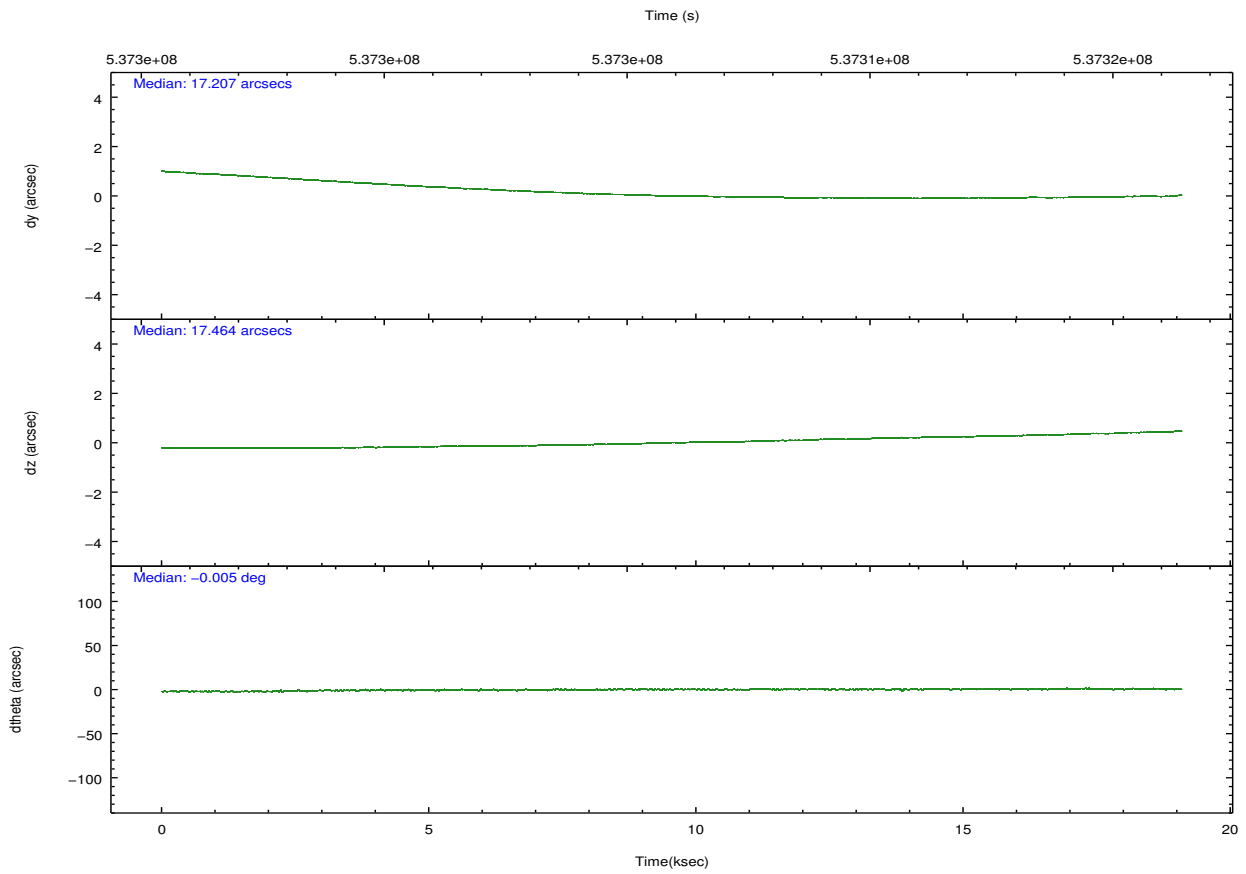
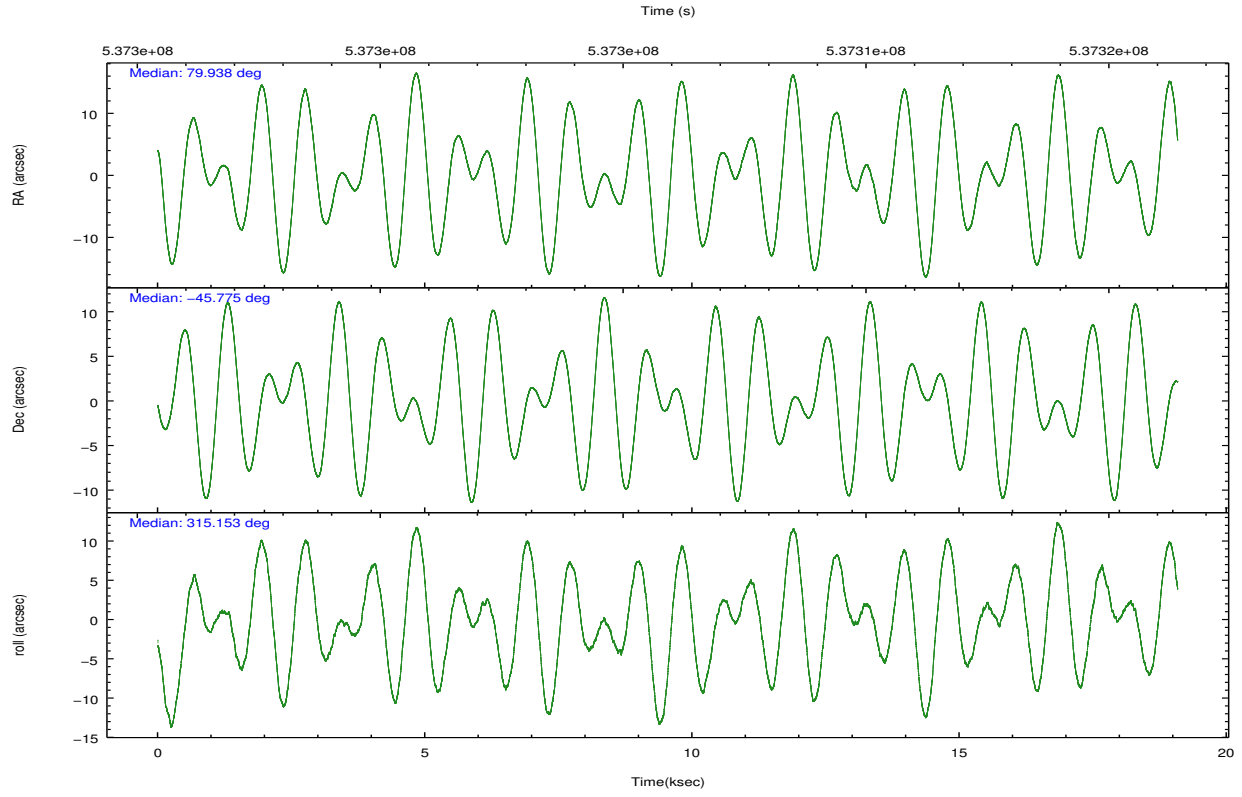
	ccd 2	ccd 3	ccd 5	ccd 6	ccd 7	ccd 8		ccd 2	ccd 3	ccd 5	ccd 6	ccd 7	ccd 8
level 1 events	96132	91061	169053	100693	143604	128306	grade 0 events	3477	3568	11868	4455	6251	8633
rejected events	85726	80782	84097	88297	79621	96583		3%	3%	7%	4%	4%	6%
rejected %	89%	88%	49%	87%	55%	75%	grade 1 events	54	40	610	52	275	84
								0%	0%	0%	0%	0%	0%
							grade 2 events	2552	2323	25937	2875	13420	7788
								2%	2%	15%	2%	9%	6%
							grade 3 events	1075	1115	2498	1140	5168	3118
								1%	1%	1%	1%	3%	2%
							grade 4 events	1144	1097	2503	1132	4928	3070
								1%	1%	1%	1%	3%	2%
							grade 5 events	4384	4885	10949	4876	13731	7055
								4%	5%	6%	4%	9%	5%
							grade 6 events	2164	2182	42175	2799	34238	9120
								2%	2%	24%	2%	23%	7%
							grade 7 events	81282	75851	72513	83364	65593	89438
								84%	83%	42%	82%	45%	69%

2.2 Compared Parameters

Parameter	Planned	Actual	Parameter	Planned	Actual
Instrument	ACIS	ACIS	Obspar format version number	7	7
Detector	ACIS-235678	ACIS-235678	Obspar file type	PREDICTED	ACTUAL
Grating	NONE	NONE	Obspar update status	NONE	UPDATED
Data mode	FAINT	FAINT	CCD I0 on	N	N
Observation mode	POINTING	POINTING	CCD I1 on	N	N
[deg] Pointing RA	79.899539	79.93771199648884	CCD I2 on	O3	Y
[deg] Pointing Dec	-45.768250	-45.7749304309885	CCD I3 on	O2	Y
[deg] Pointing Roll	314.975789	315.1597609706498	CCD S0 on	N	N
[mm] SIM focus pos	-0.684267	-0.6828225247311905	CCD S1 on	O4	Y
[mm] SIM defocus	0	0.001444936568705701	CCD S2 on	Y	Y
[mm] SIM translation stage pos	-190.132523	-190.1400660498719	CCD S3 on	Y	Y
[mm] SIM translation stage offset	0	0.00754346686406393	CCD S4 on	O1	Y
[s] Observation start time (MET)	537296575.184000	537295383.09872	CCD S5 on	N	N
Observation start date	2015-01-10T17:01:48	2015-01-10T16:43:03	Number of optional ACIS chips dropped	0	0
[s] Observation end time (MET)	537315475.184000	537316845.57491	On-chip summing requested	N	N
Observation end date	2015-01-10T22:16:48	2015-01-10T22:40:45	Subarray requested	NONE	NONE
Read mode	TIMED	TIMED	Alternating exposures requested	N	N
			[s] Primary exposure time	0.000000	3.2

2.3 Aspect



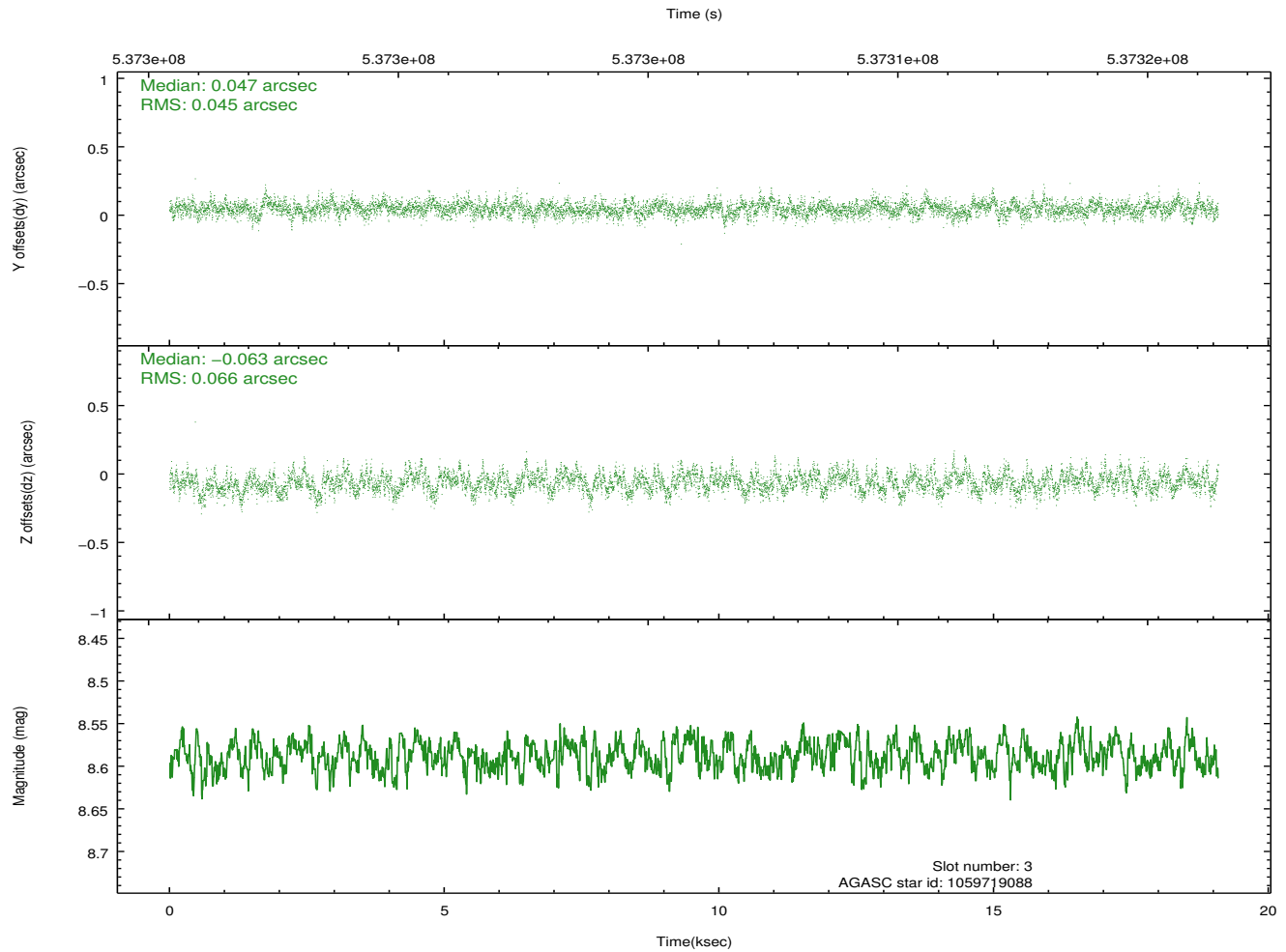
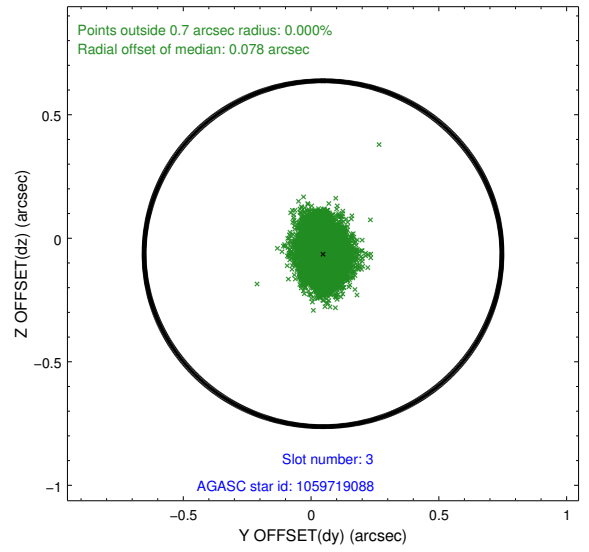
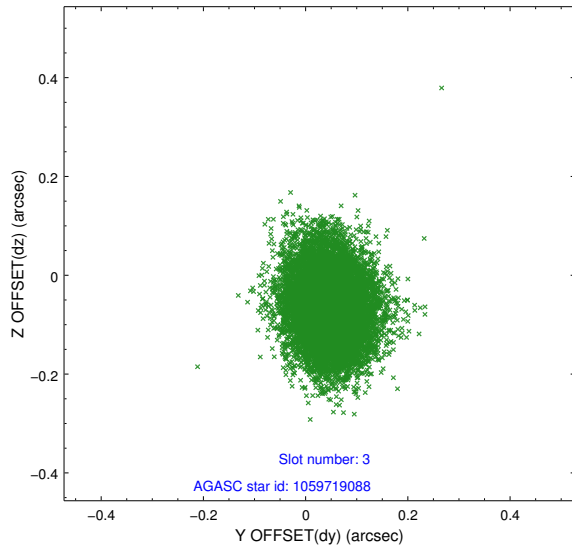


Slot Statistics

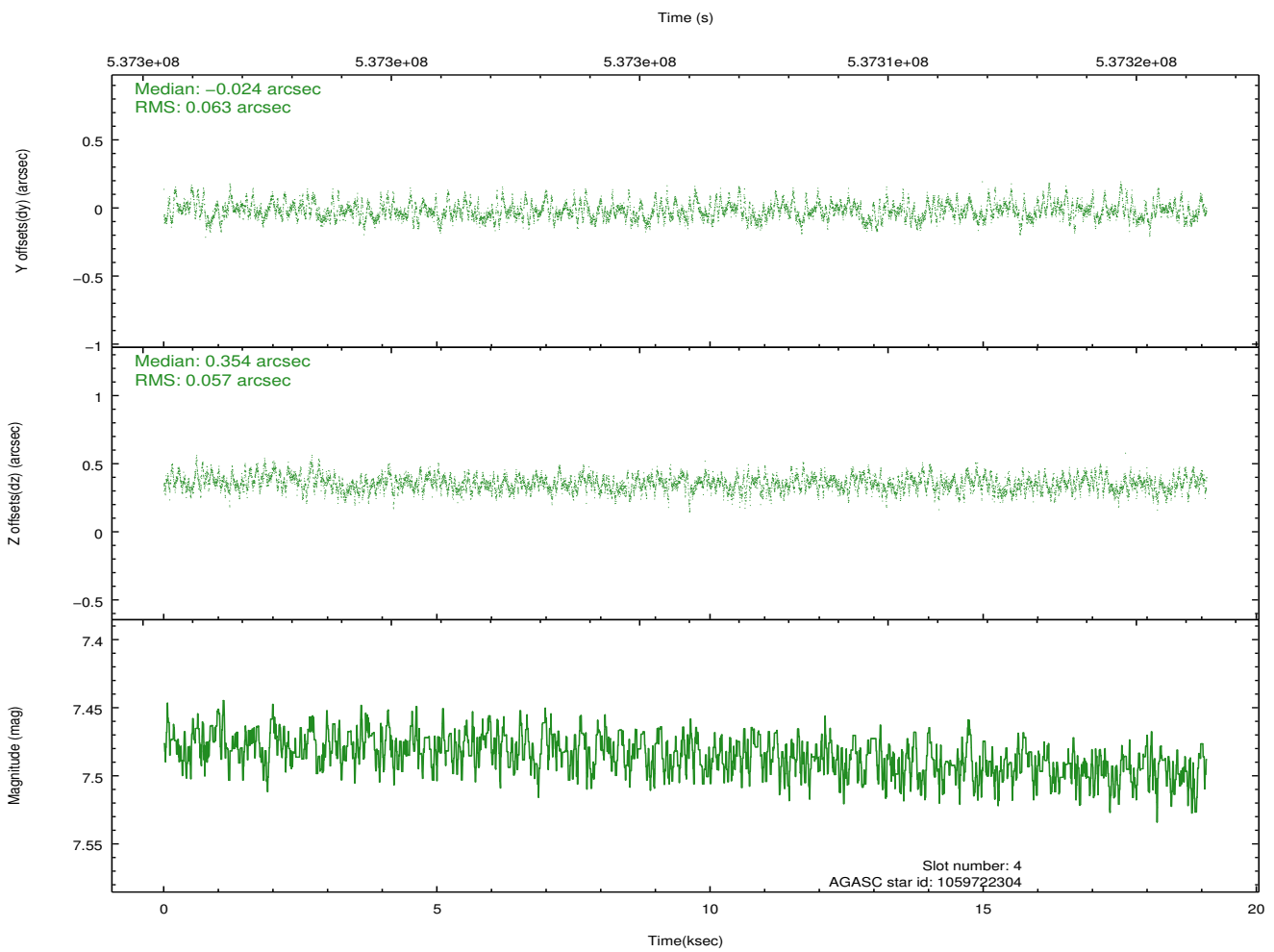
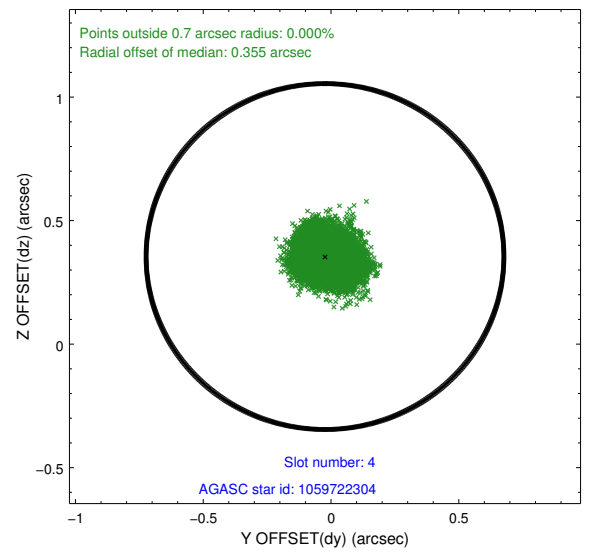
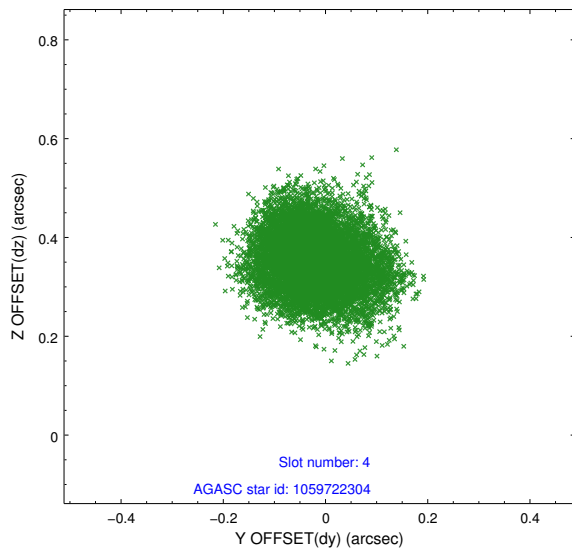
slot	status	used	id	mag	n_pts	med_dy	med_dz	dr1	dr2	ra	dec	mean_y	mean_z
0	FID		ACIS-S-1	7.19	4655	0.121	-0.074	0.013	0.022	0.000000	0.000000	925.71	-1734.65
1	FID		ACIS-S-4	7.19	4655	0.257	-0.002	0.012	0.019	0.000000	0.000000	2143.37	169.36
2	FID		ACIS-S-5	7.21	4656	-0.406	0.088	0.009	0.017	0.000000	0.000000	-1823.42	163.28
3	GUIDE	used	1059719088	8.59	9304	0.047	-0.063	0.085	0.137	80.358941	-45.341185	-263.92	1906.86
4	GUIDE	used	1059722304	7.49	9310	-0.024	0.354	0.091	0.146	79.157586	-45.913736	-936.49	-1690.31
5	GUIDE	used	1059725312	8.61	9310	0.225	-0.079	0.089	0.145	79.636160	-45.090752	-2197.54	1249.24
6	GUIDE	used	1059720720	7.50	9310	0.006	0.031	0.093	0.153	80.088736	-46.563710	2357.43	-1692.66
7	GUIDE	used	1059718384	7.82	9308	-0.254	-0.259	0.083	0.131	80.663676	-45.411103	461.85	2268.37

2.4 Star Slots

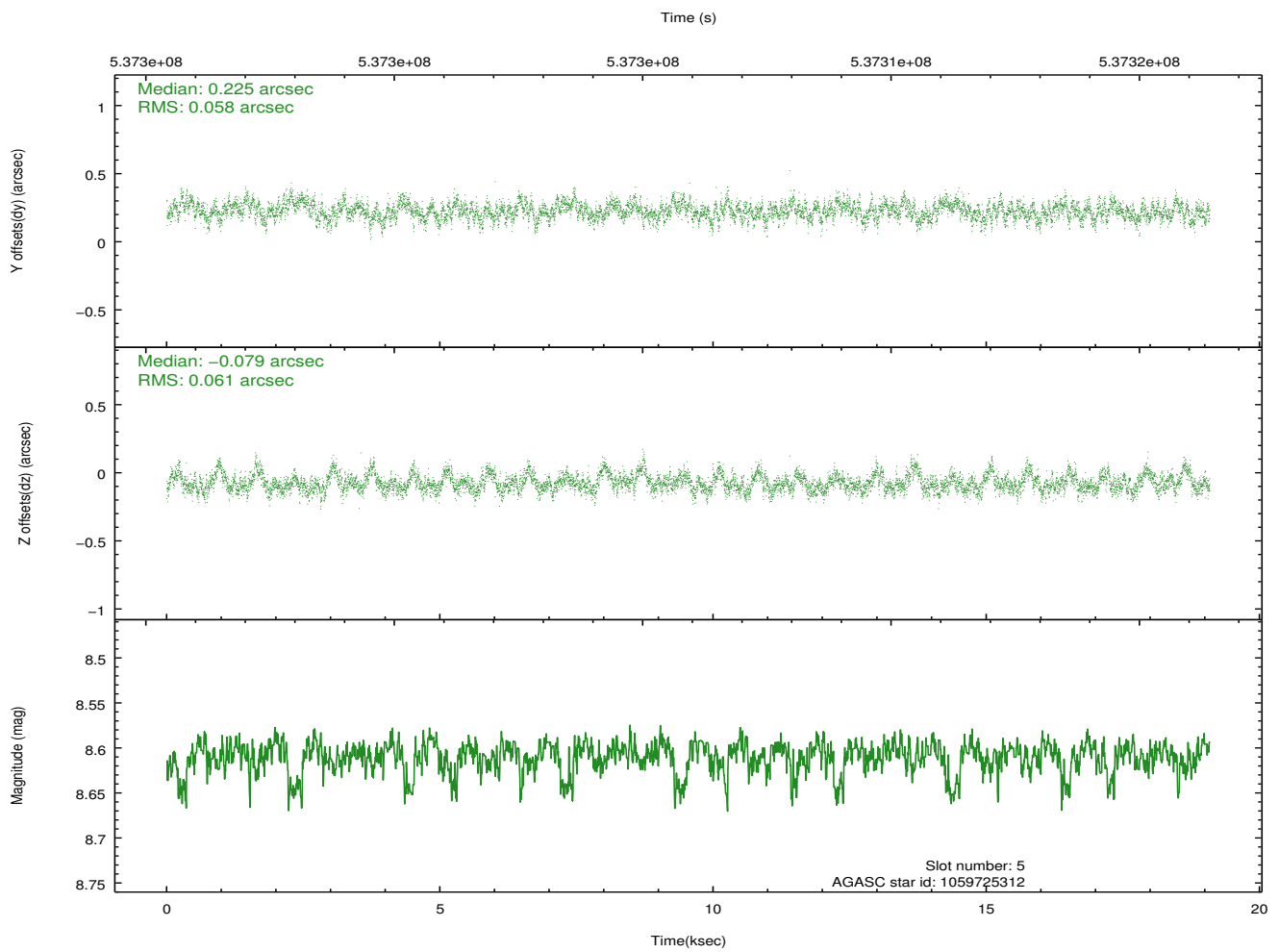
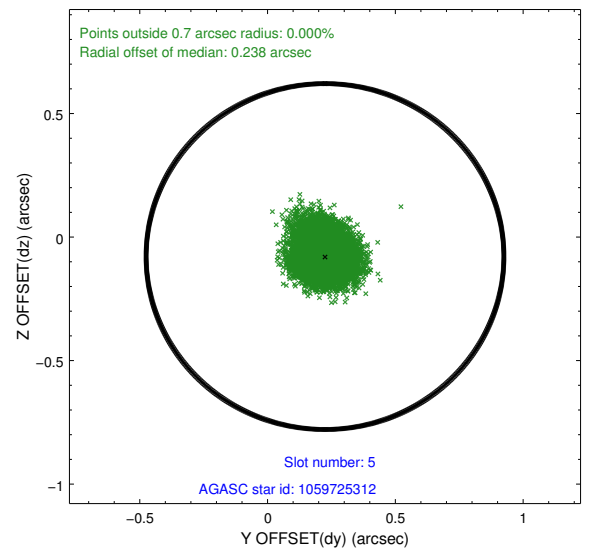
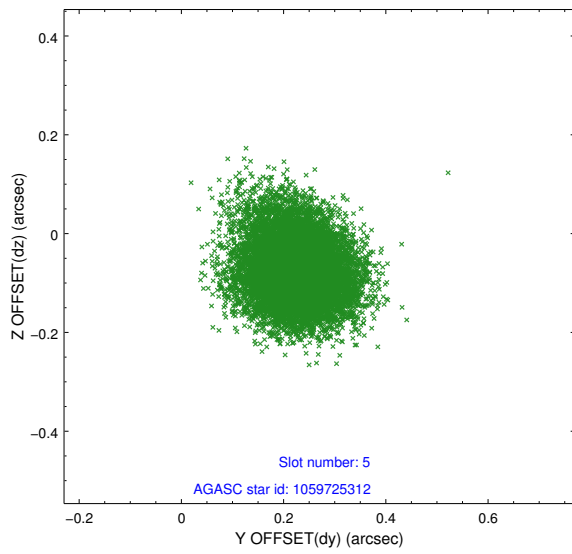
2.4.1 Slot 3



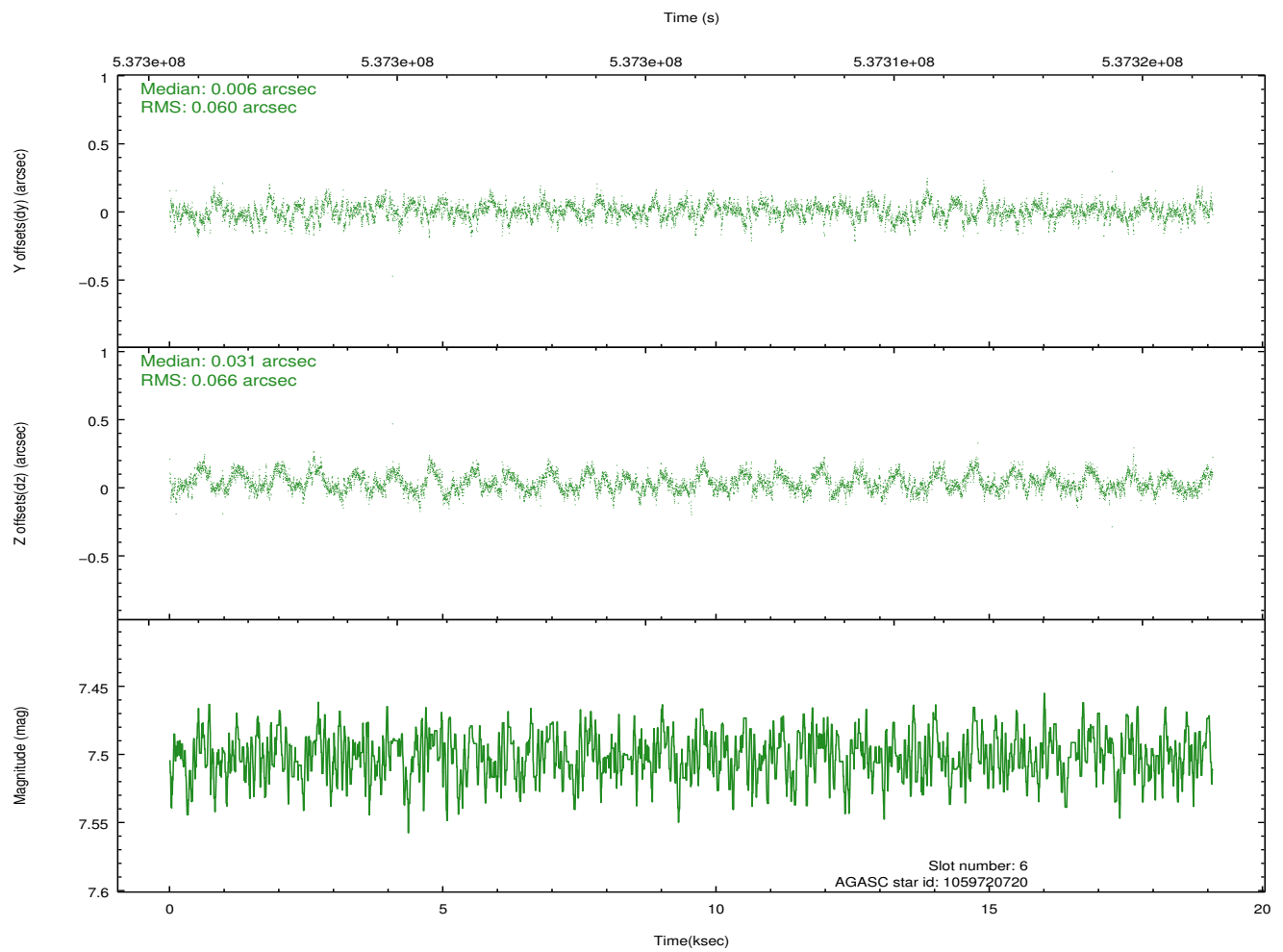
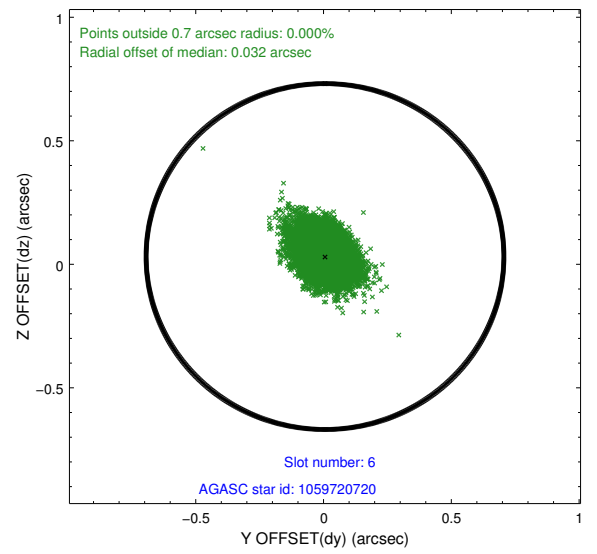
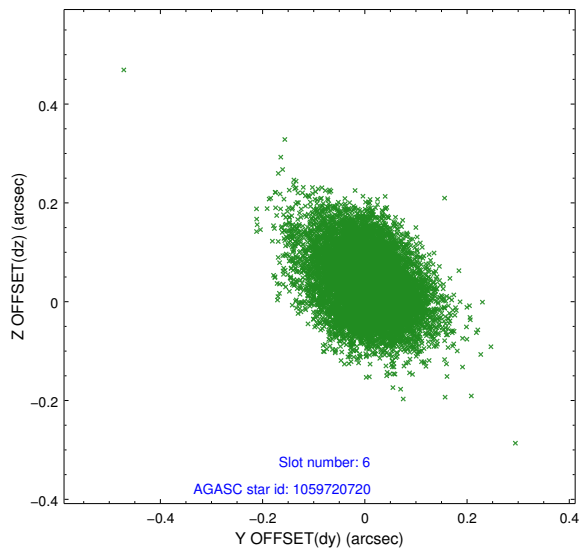
2.4.2 Slot 4



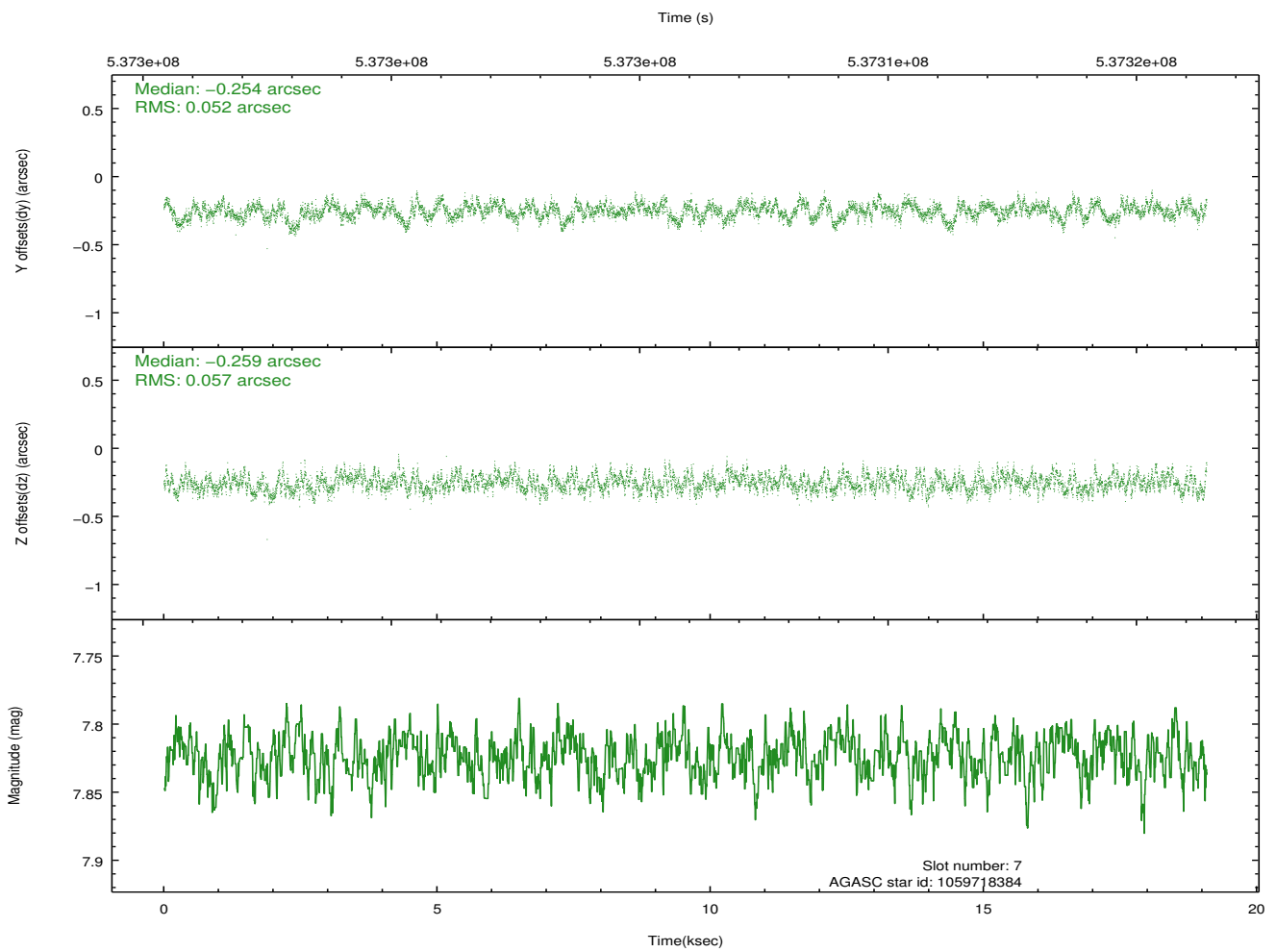
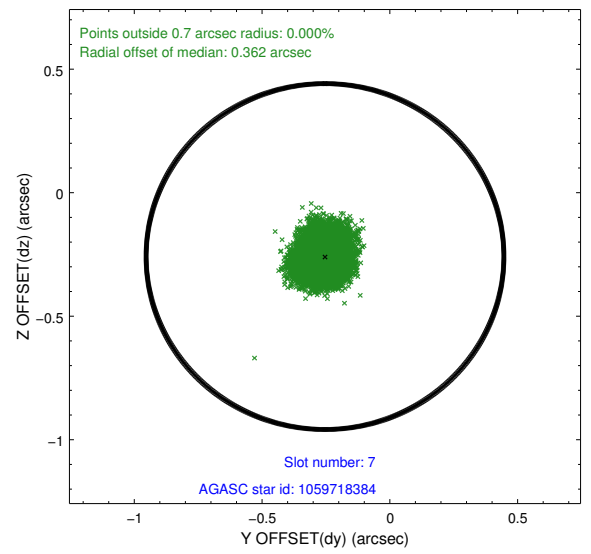
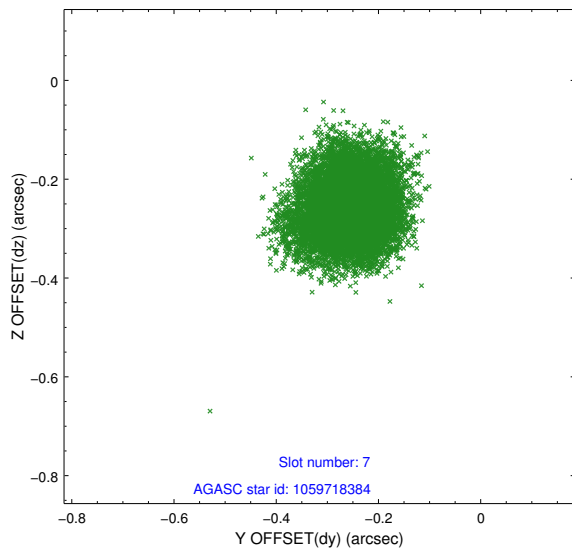
2.4.3 Slot 5



2.4.4 Slot 6

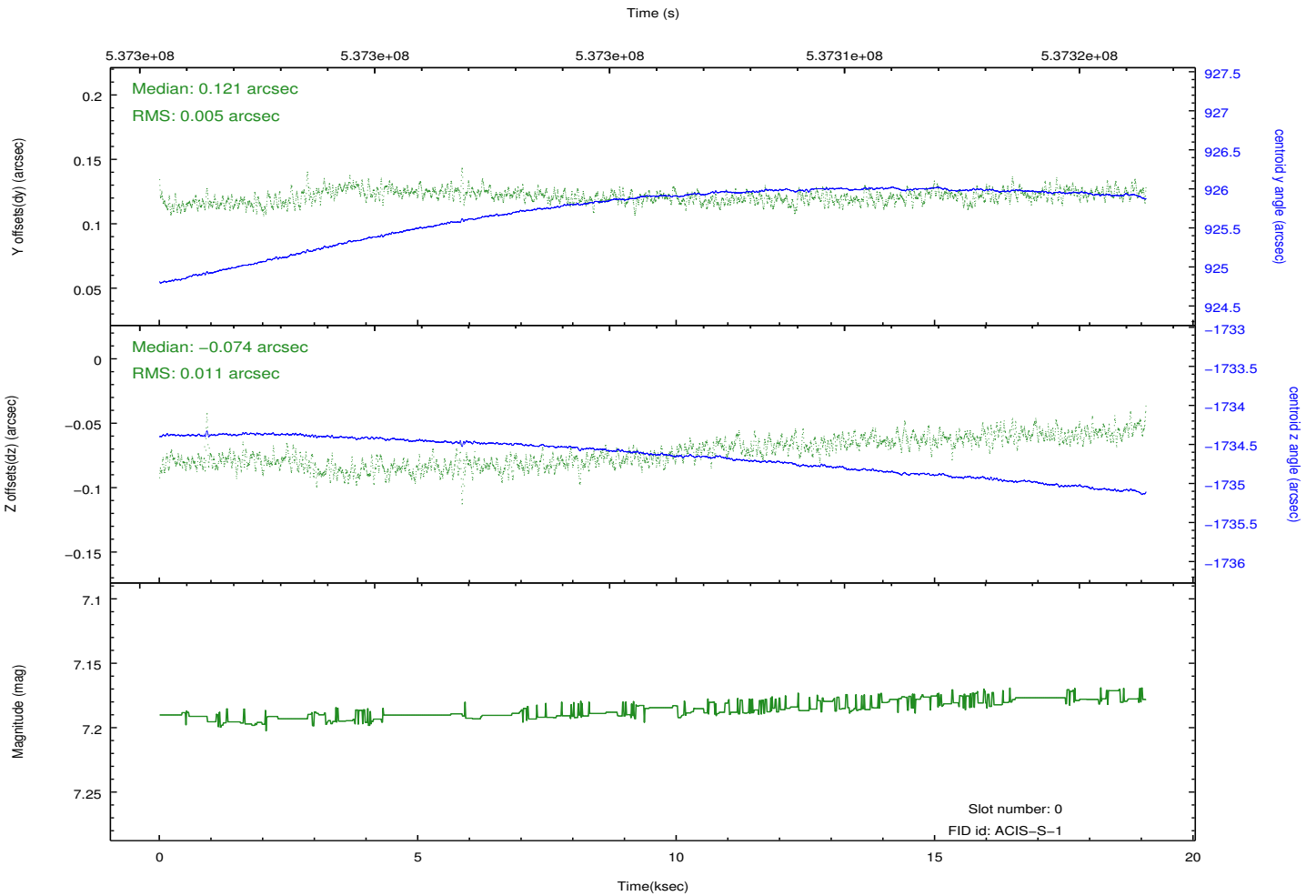
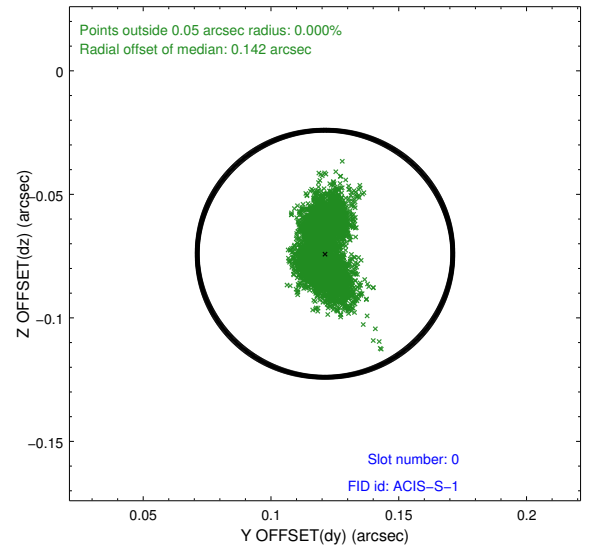
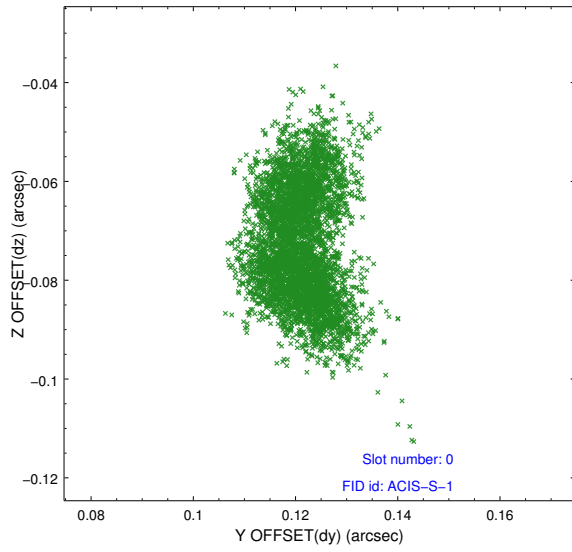


2.4.5 Slot 7

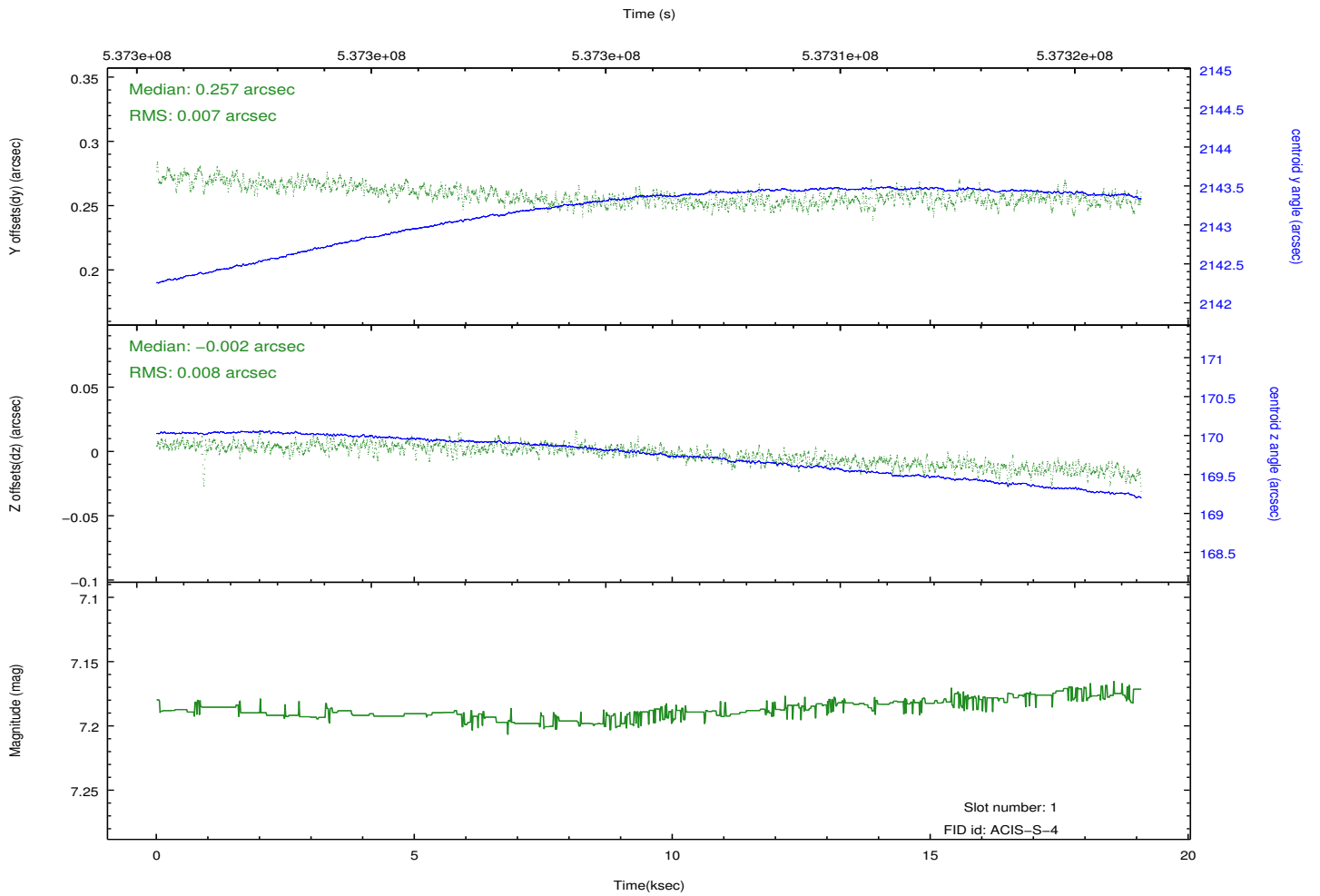
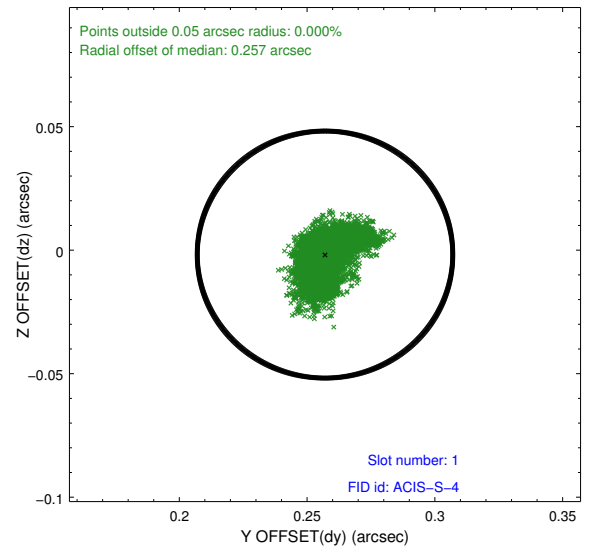
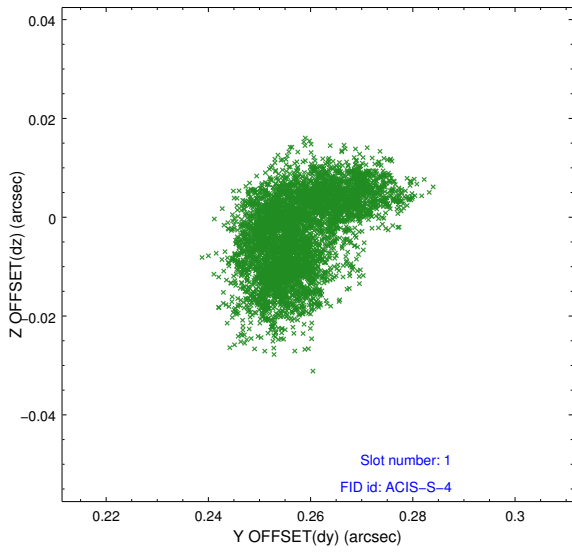


2.5 FID Slots

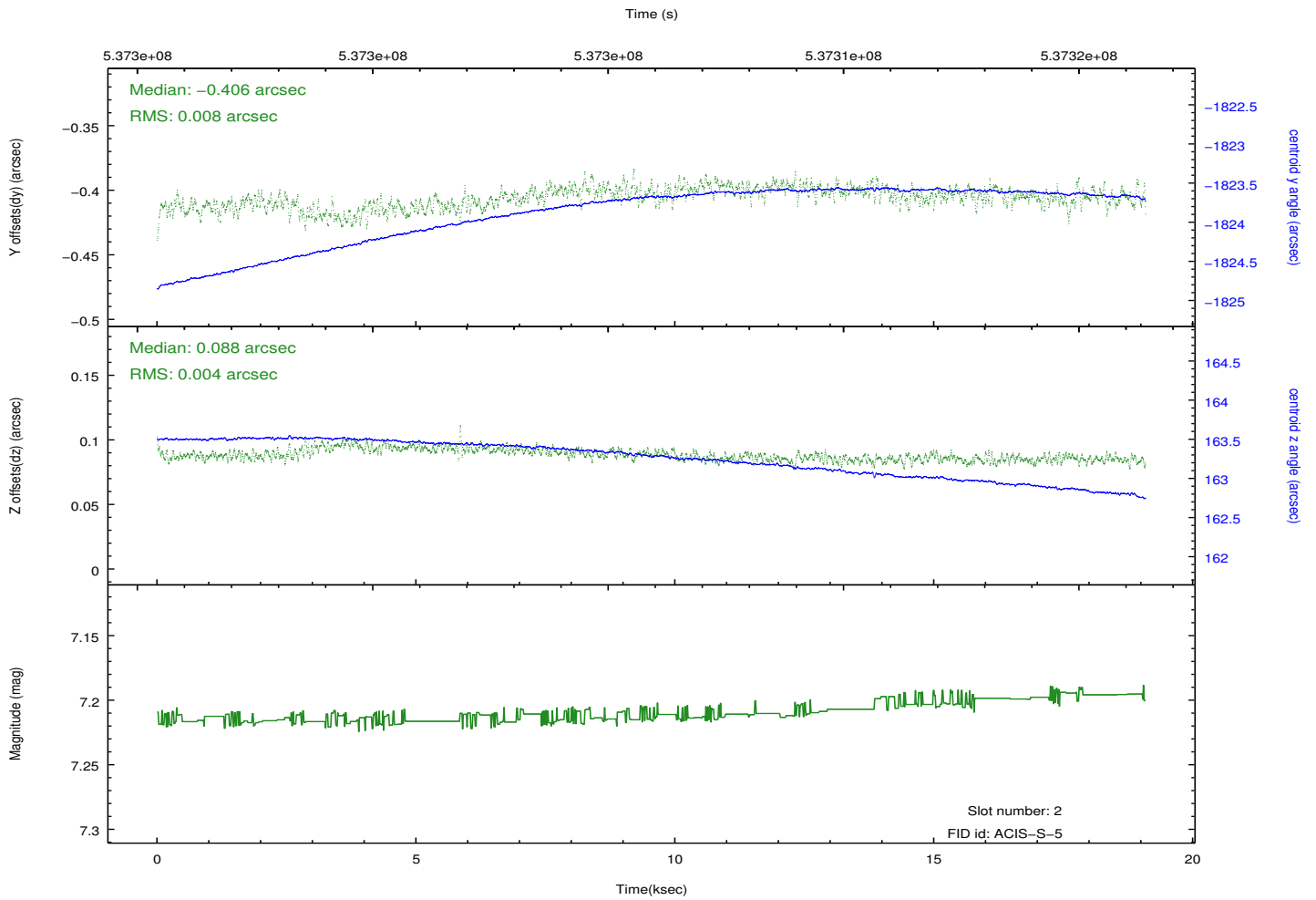
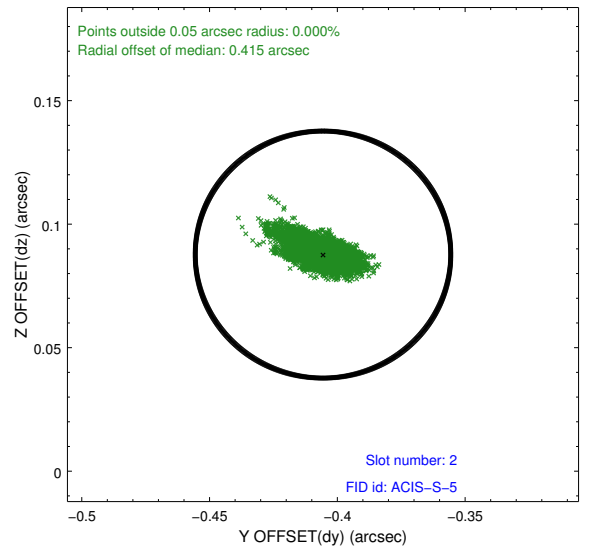
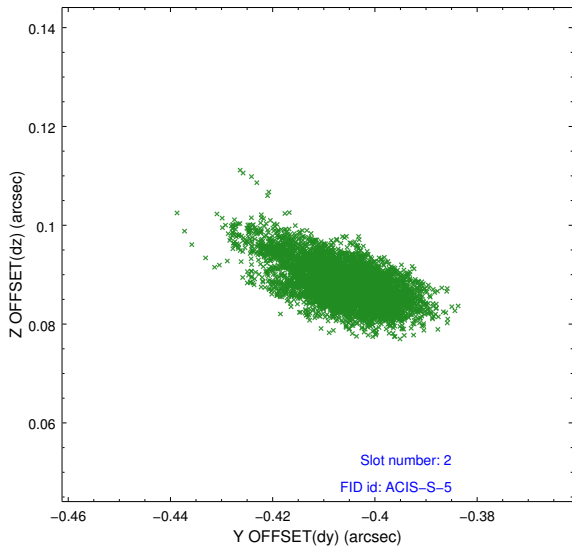
2.5.1 Slot 0



2.5.2 Slot 1



2.5.3 Slot 2



A Summary

A.1 Status

V&V Scientist	Jen Lauer
V&V Date (YYYY-MM-DD)	2015.01.13
V&V Edition	1
V&V Disposition and Status	OK
V&V Charge Time	18.86010591507

A.2 Comments

Roll preference met.