

V&V Reference Report

L2 ASCDS Version : 8.4.5

Observation 1934 - L2 Version 3
Chandra X-Ray Center

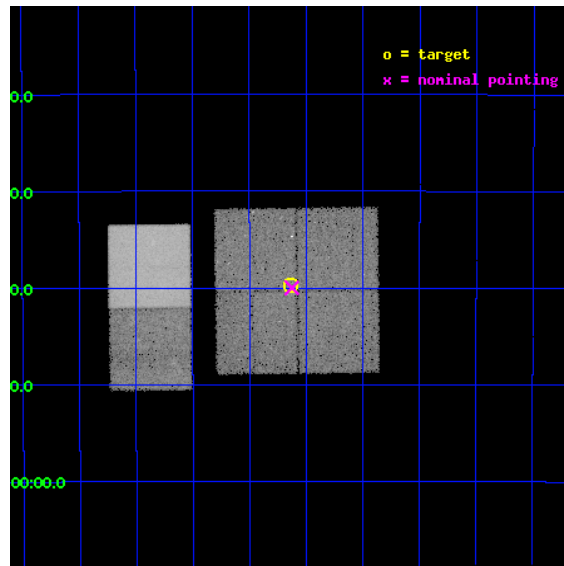
L2 Processing Date : Sep 23 2012

Contents

1	Front	2
2	OBI	3
2.1	OBI	3
2.1.1	Images	3
2.1.2	Bias	3
2.1.3	Parameters	4
2.1.4	Events	4
2.2	Compared Parameters	5
2.3	Aspect	6
2.4	Star Slots	9
2.4.1	Slot 3	9
2.4.2	Slot 4	10
2.4.3	Slot 5	11
2.4.4	Slot 6	12
2.4.5	Slot 7	13
2.5	FID Slots	14
2.5.1	Slot 0	14
2.5.2	Slot 1	15
2.5.3	Slot 2	16
A	Summary	17
A.1	Status	17
A.2	Comments	17

1 Front

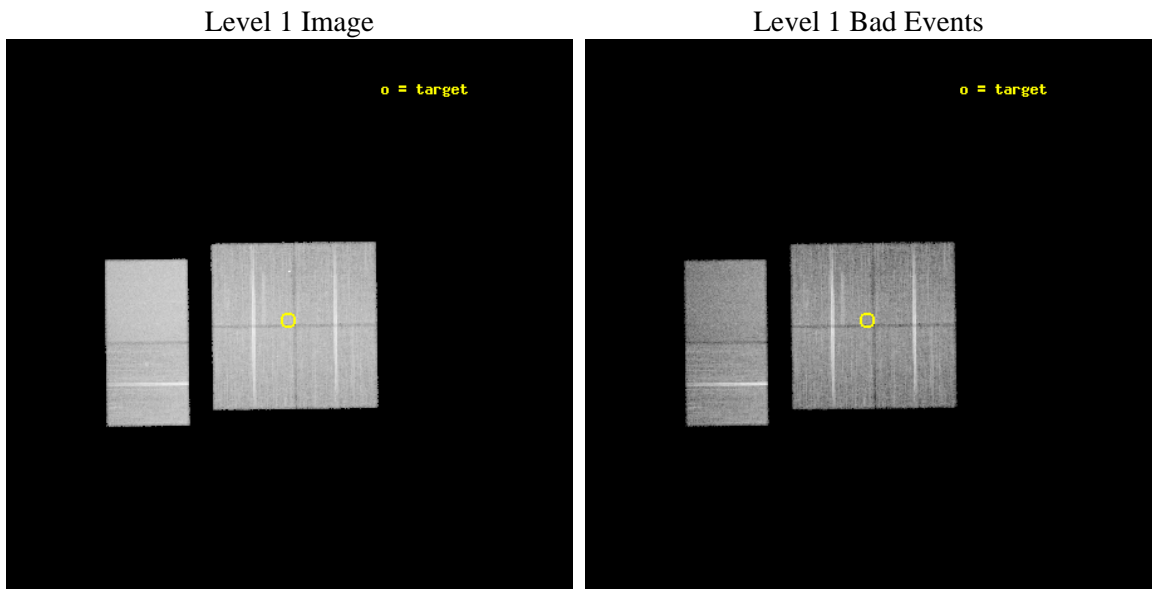
seq_num	400147	Sequence number
obs_id	1934	Observation id
title	QUIESCENT AND LOW LUMINOSITY X-RAY BINARIES	Proposal title
observer	DR CRAIG MARKWARDT	Principal investigator
object	XTE J1723-376	Source name
dtycycle	0	
cycle	P	events from which exps? Prim/Second/Both
ra_targ	260.90875	Observer's specified target RA [deg]
dec_targ	-37.662389	Observer's specified target Dec [deg]
ra_nom	260.90634144828	Nominal RA [deg]
dec_nom	-37.666714429144	Nominal Dec [deg]
roll_nom	269.25542506115	Nominal Roll [deg]
revision	3	Processing version of data
ontime	29718.400027663	Sum of GTIs [s]
livetime	29342.08775224	Livetime [s]
ontime0	29718.400027663	Sum of GTIs [s]
ontime1	29718.400027663	Sum of GTIs [s]
ontime2	29715.159067422	Sum of GTIs [s]
ontime3	29718.400027663	Sum of GTIs [s]
ontime6	29718.400027663	Sum of GTIs [s]
ontime7	29718.400027663	Sum of GTIs [s]
l2events	216974	Number of level 2 events



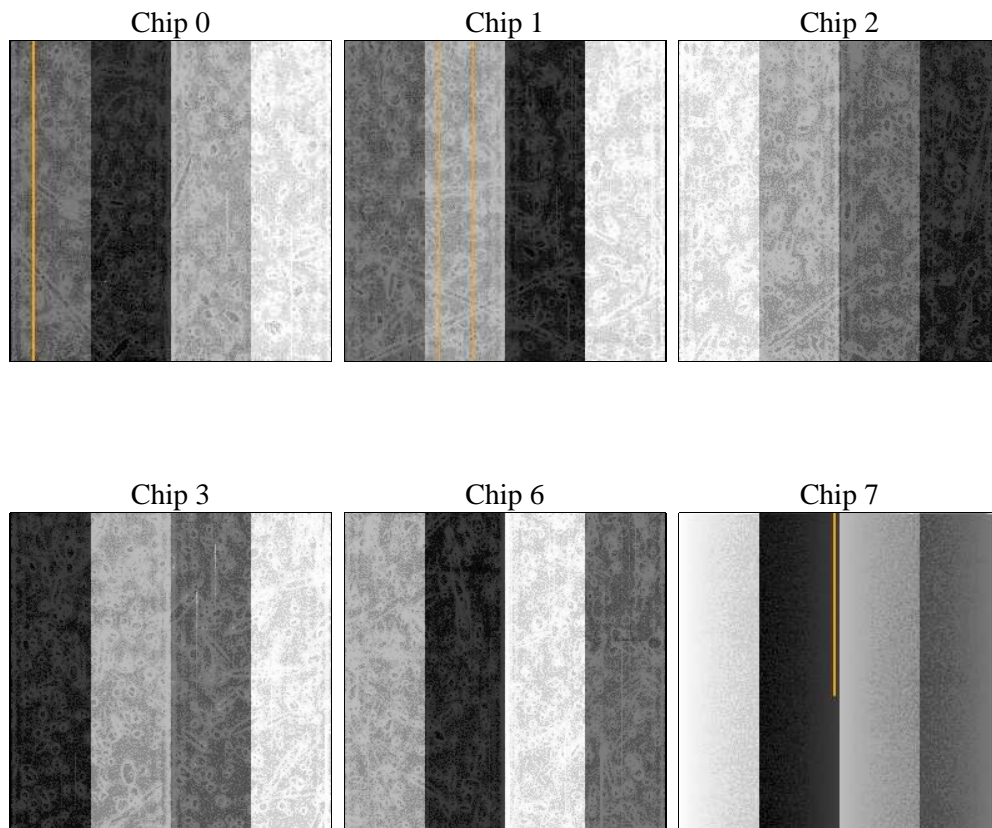
2 OBI

2.1 OBI

2.1.1 Images



2.1.2 Bias



2.1.3 Parameters

obi_num	0	Obi number	sched_exp_time	29700.000000	[s] Scheduled observation exposure time
ascdsver	8.4.5	Processing system revision	ontime	29718.400027663	Sum of GTIs [s]
caldbver	4.5.1.1	 	ontime0	29718.400027663	Sum of GTIs [s]
date	2012-09-23T15:31:15	Date and time of file creation	ontime1	29718.400027663	Sum of GTIs [s]
revision	3	Processing version of data	ontime2	29715.159067422	Sum of GTIs [s]
			ontime3	29718.400027663	Sum of GTIs [s]
			ontime6	29718.400027663	Sum of GTIs [s]
			ontime7	29718.400027663	Sum of GTIs [s]
			l1events	1184815	Number of level 1 events

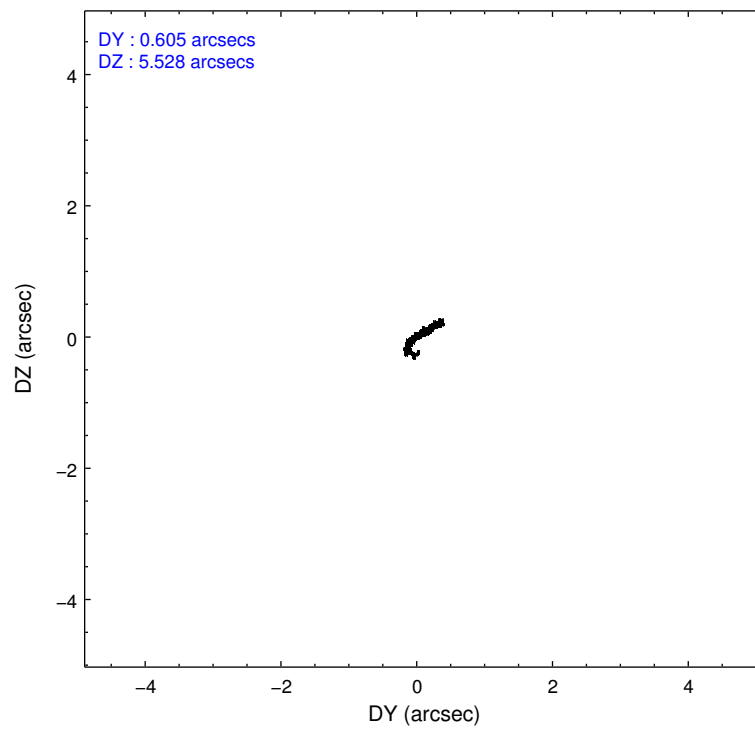
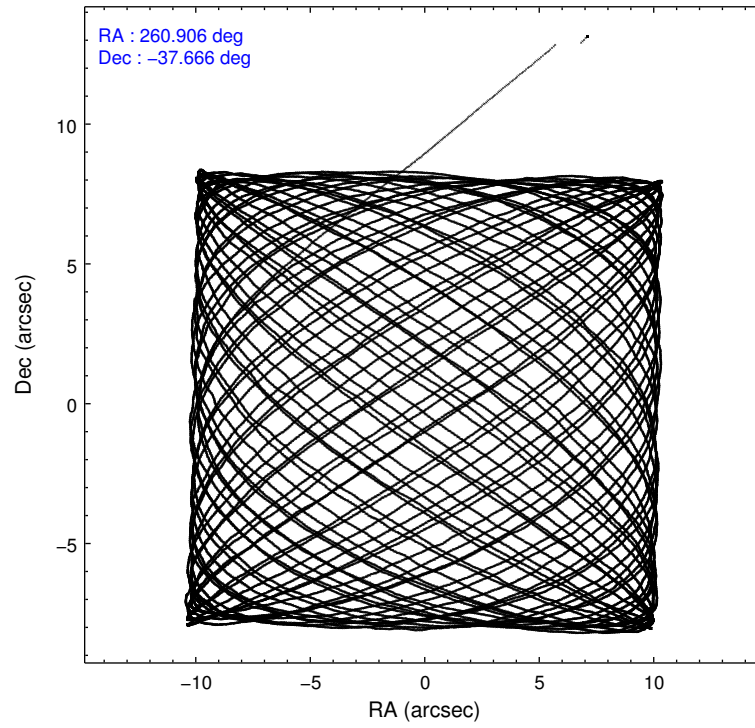
2.1.4 Events

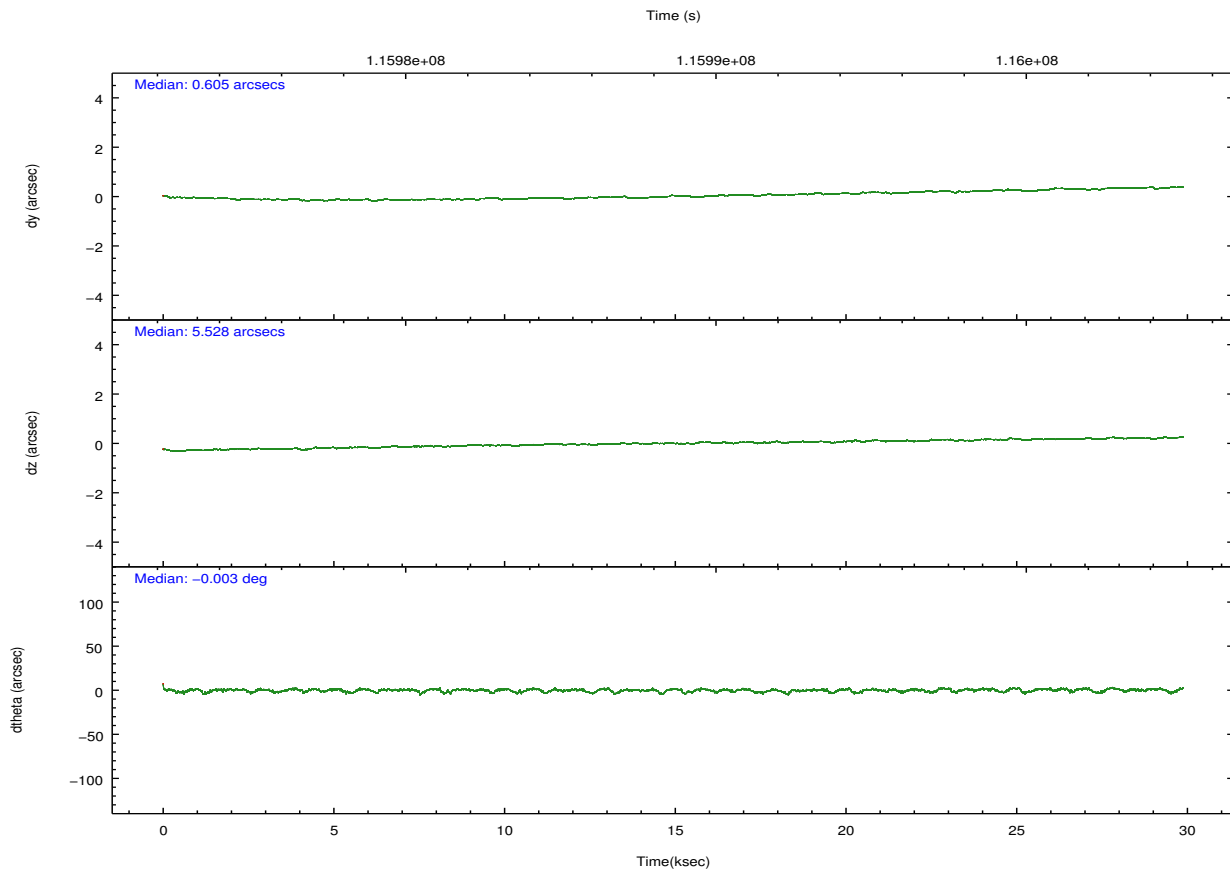
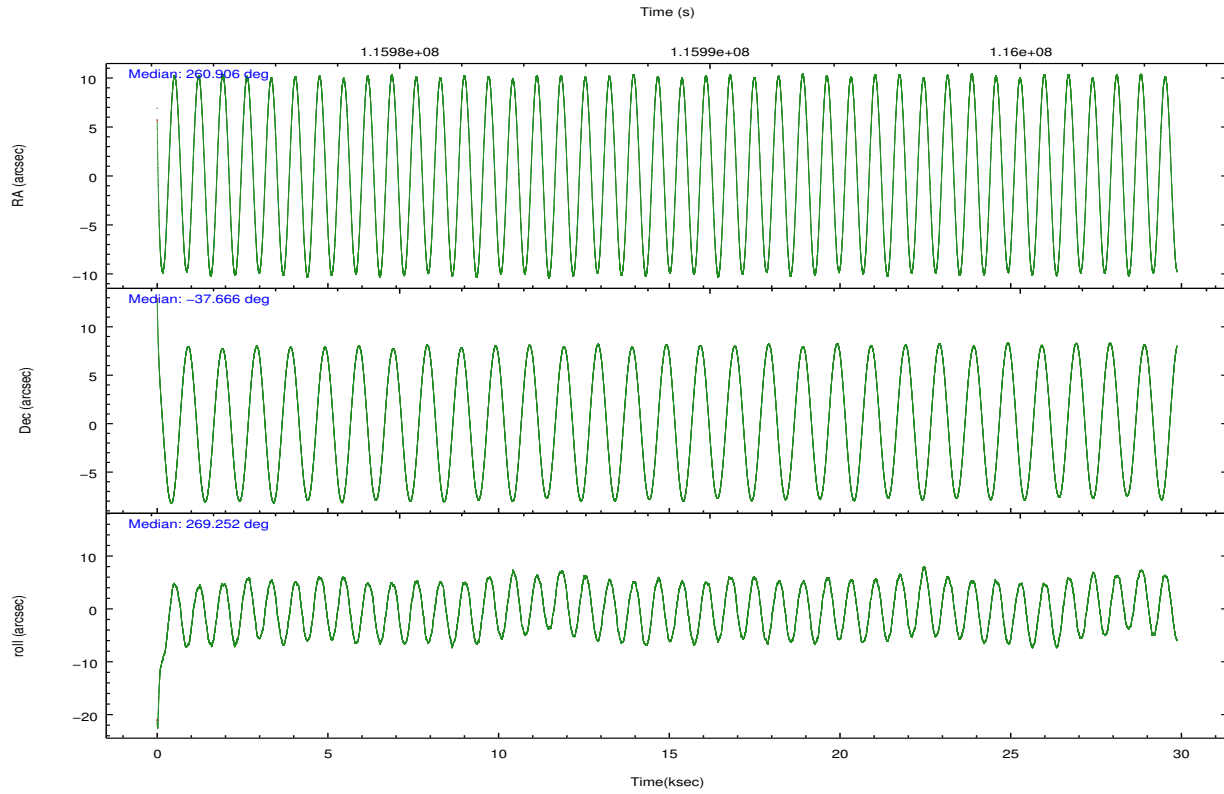
	ccd 0	ccd 1	ccd 2	ccd 3	ccd 6	ccd 7		ccd 0	ccd 1	ccd 2	ccd 3	ccd 6	ccd 7
level 1 events	171381	173348	190668	190382	201588	257448	grade 0 events	10441	10589	10375	11128	11459	11350
rejected events	147959	148711	167857	166530	176648	141099		6%	6%	5%	5%	5%	4%
rejected %	86%	85%	88%	87%	87%	54%	grade 1 events	82	93	85	102	96	205
								0%	0%	0%	0%	0%	0%
							grade 2 events	4883	4974	4672	4593	4699	22635
								2%	2%	2%	2%	2%	8%
							grade 3 events	2231	2462	1996	2162	2260	10430
								1%	1%	1%	1%	1%	4%
							grade 4 events	2081	2283	2017	2062	2181	10452
								1%	1%	1%	1%	1%	4%
							grade 5 events	6775	7236	6481	7353	8199	23003
								3%	4%	3%	3%	4%	8%
							grade 6 events	3789	4334	3752	3909	4343	61488
								2%	2%	1%	2%	2%	23%
							grade 7 events	141099	141377	161290	159073	168351	117885
								82%	81%	84%	83%	83%	45%

2.2 Compared Parameters

Parameter	Planned	Actual	Parameter	Planned	Actual
Instrument	ACIS	ACIS	Obspar format version number	7	7
Detector	ACIS-012367	ACIS-012367	Obspar file type	PREDICTED	ACTUAL
Grating	NONE	NONE	Obspar update status	NONE	UPDATED
Data mode	FAINT	FAINT	Number of optional ACIS chips dropped	0	0
Observation mode	POINTING	POINTING	On-chip summing requested	N	N
[deg] Pointing RA	260.889373	260.9063414482814	Subarray requested	NONE	NONE
[deg] Pointing Dec	-37.642795	-37.6667144291437	Alternating exposures requested	N	N
[deg] Pointing Roll	269.036379	269.255425061147	[s] Primary exposure time	0.000000	3.2
[mm] SIM focus pos	-0.782348	-0.7809083437167272			
[mm] SIM defocus	0	0.001439871863259334			
[mm] SIM translation stage pos	-233.592463	-233.5874344608287			
[mm] SIM translation stage offset	0	-0.005018542100998502			
[s] Observation start time (MET)	115973847.184000	115972852.15334			
Observation start date	2001-09-04T06:56:23	2001-09-04T06:40:52			
[s] Observation end time (MET)	116003547.184000	116004220.74208			
Observation end date	2001-09-04T15:11:23	2001-09-04T15:23:40			
Read mode	TIMED	TIMED			

2.3 Aspect





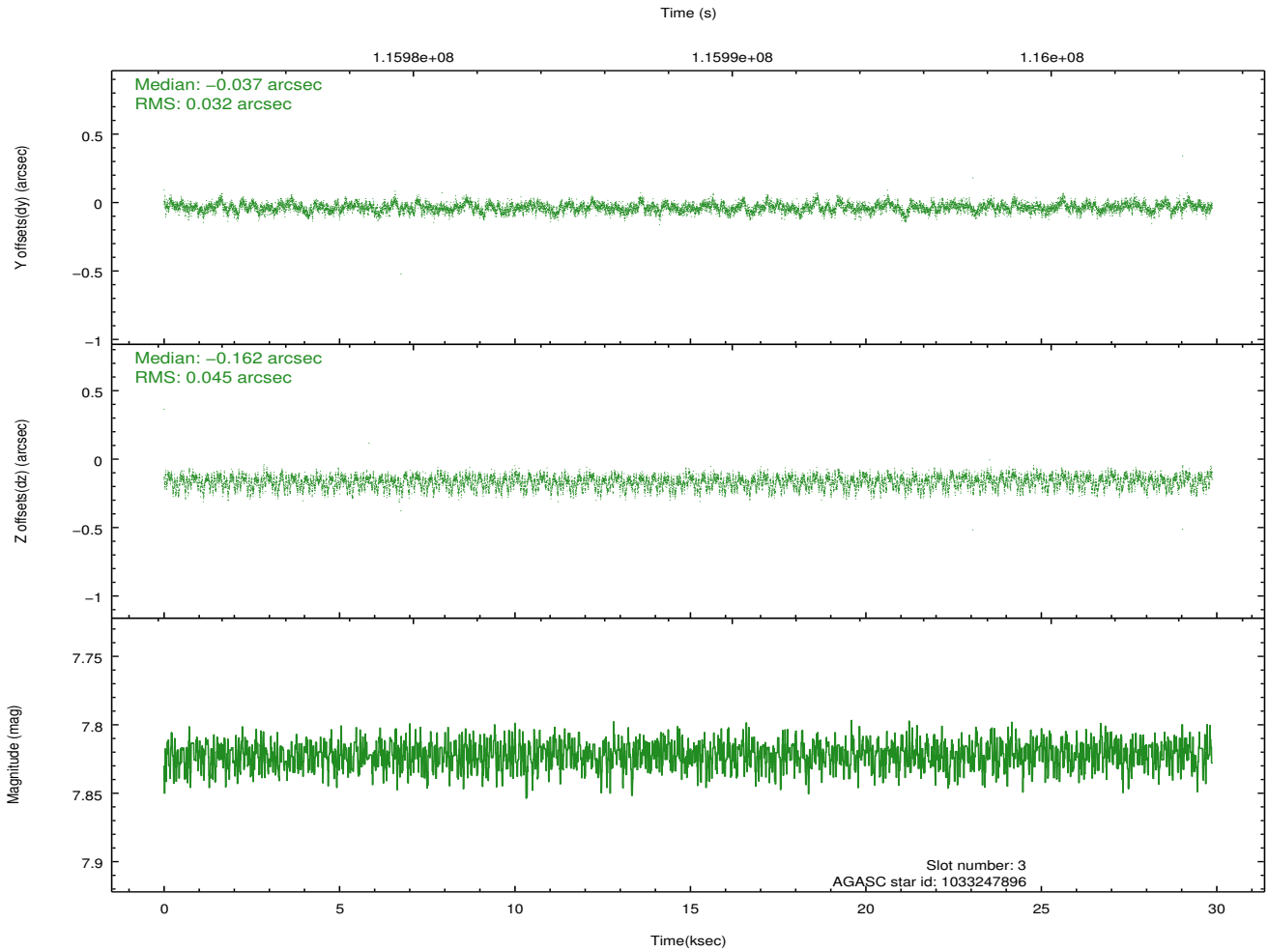
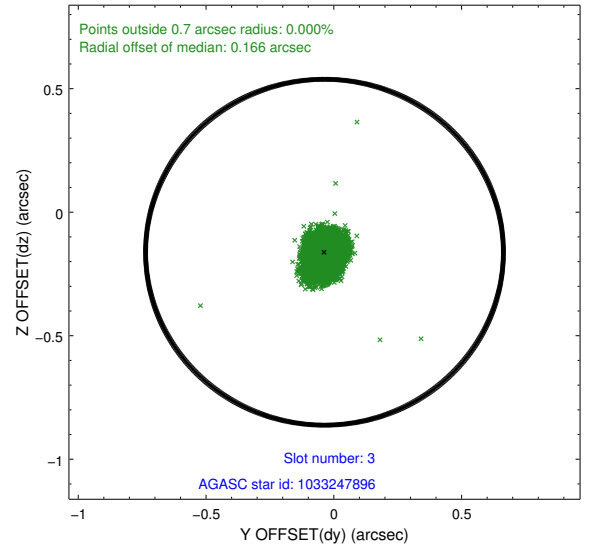
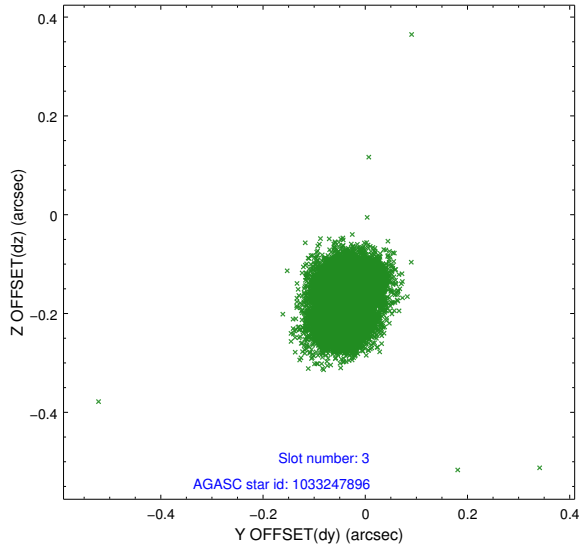
Slot Statistics

slot	status	id	mag	n_pts	med_dy	med_dz	dr1	dr2	ra	dec	mean_y	mean_z
0	FID	ACIS-I-2	7.39	7286	-0.028	-0.061	0.015	0.026	0.000000	0.000000	-754.99	-835.31
1	FID	ACIS-I-4	7.43	7284	0.001	0.042	0.016	0.046	0.000000	0.000000	2159.04	1070.96
2	FID	ACIS-I-5	7.23	7284	-0.071	0.088	0.018	0.037	0.000000	0.000000	-1808.78	1068.90
3	GUIDE	1033247896	7.82	14569	-0.037	-0.162	0.058	0.095	260.498894	-37.521028	-416.37	-1121.79
4	GUIDE	1033250456	8.13	14569	0.125	-0.066	0.057	0.094	260.370756	-38.260120	2251.83	-1427.93
5	GUIDE	966526152	8.63	14567	-0.187	0.075	0.055	0.092	260.874678	-37.077581	-2032.97	-76.07
6	GUIDE	1033248728	8.03	14569	0.105	0.077	0.046	0.073	260.825514	-37.987689	1245.38	-159.63
7	GUIDE	1033242968	8.69	14551	-0.011	0.081	0.083	0.129	261.526236	-37.609777	-142.42	1814.64

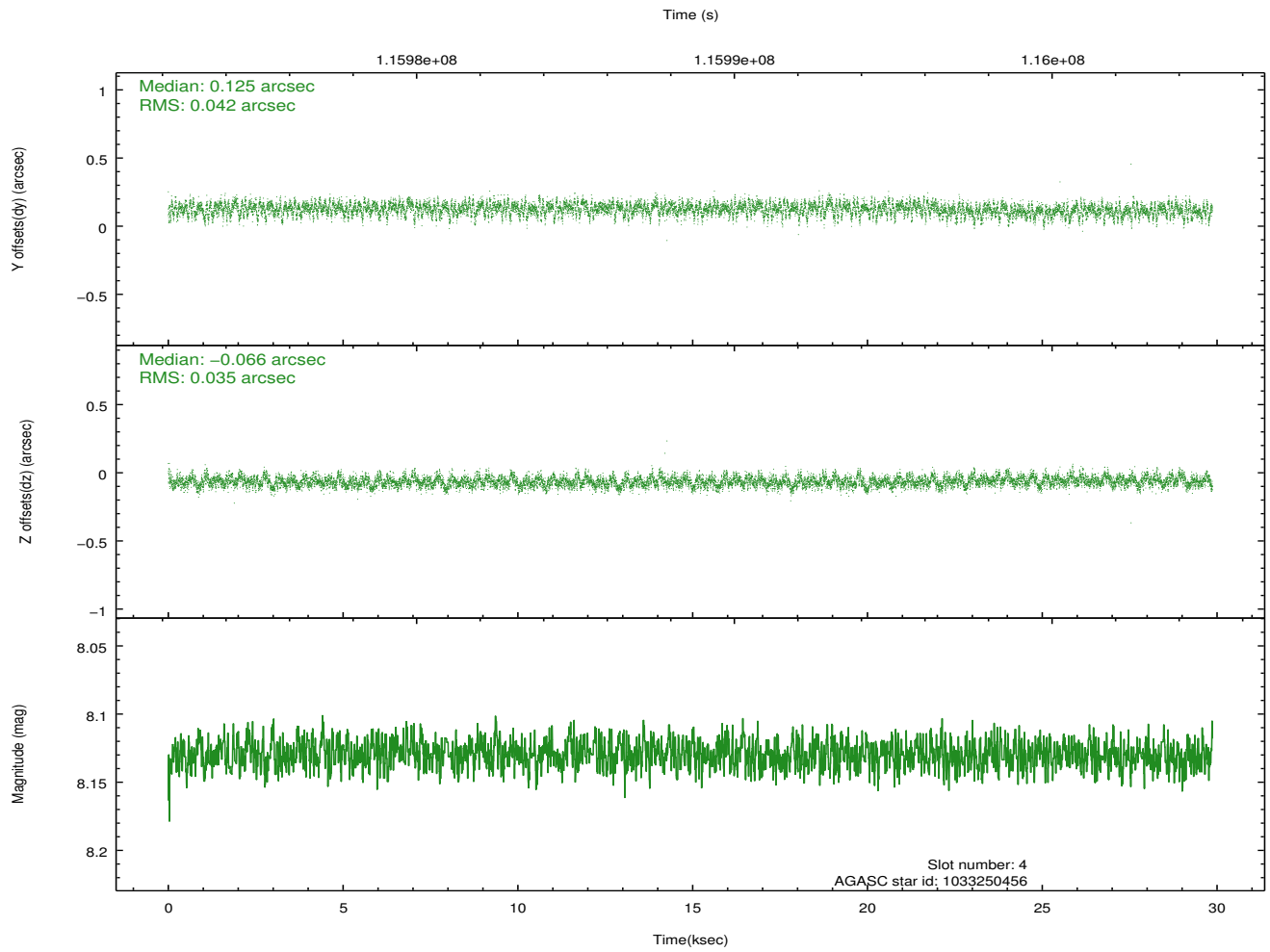
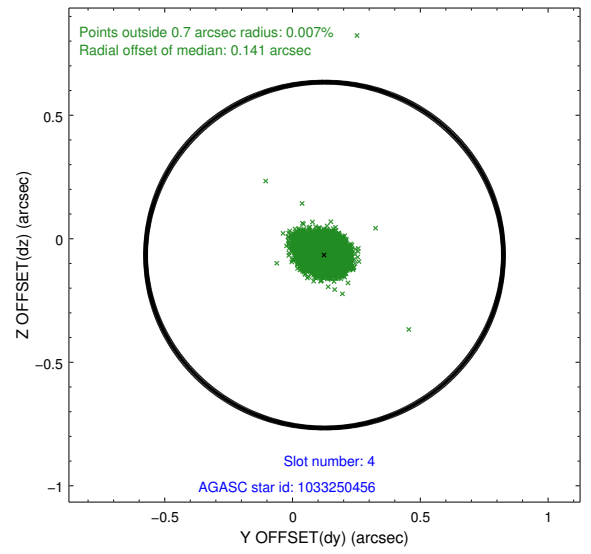
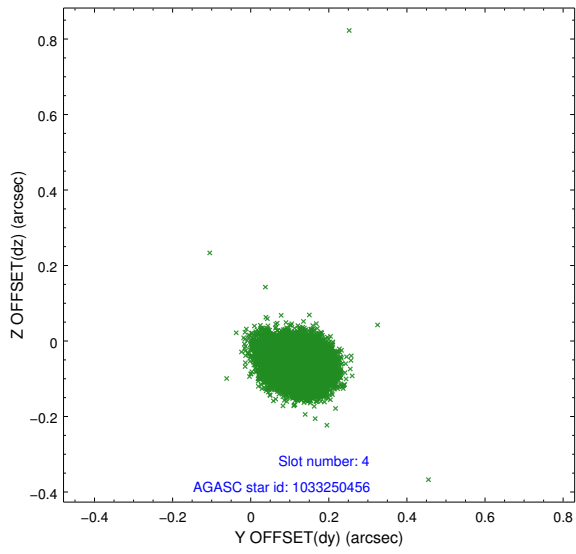
∞

2.4 Star Slots

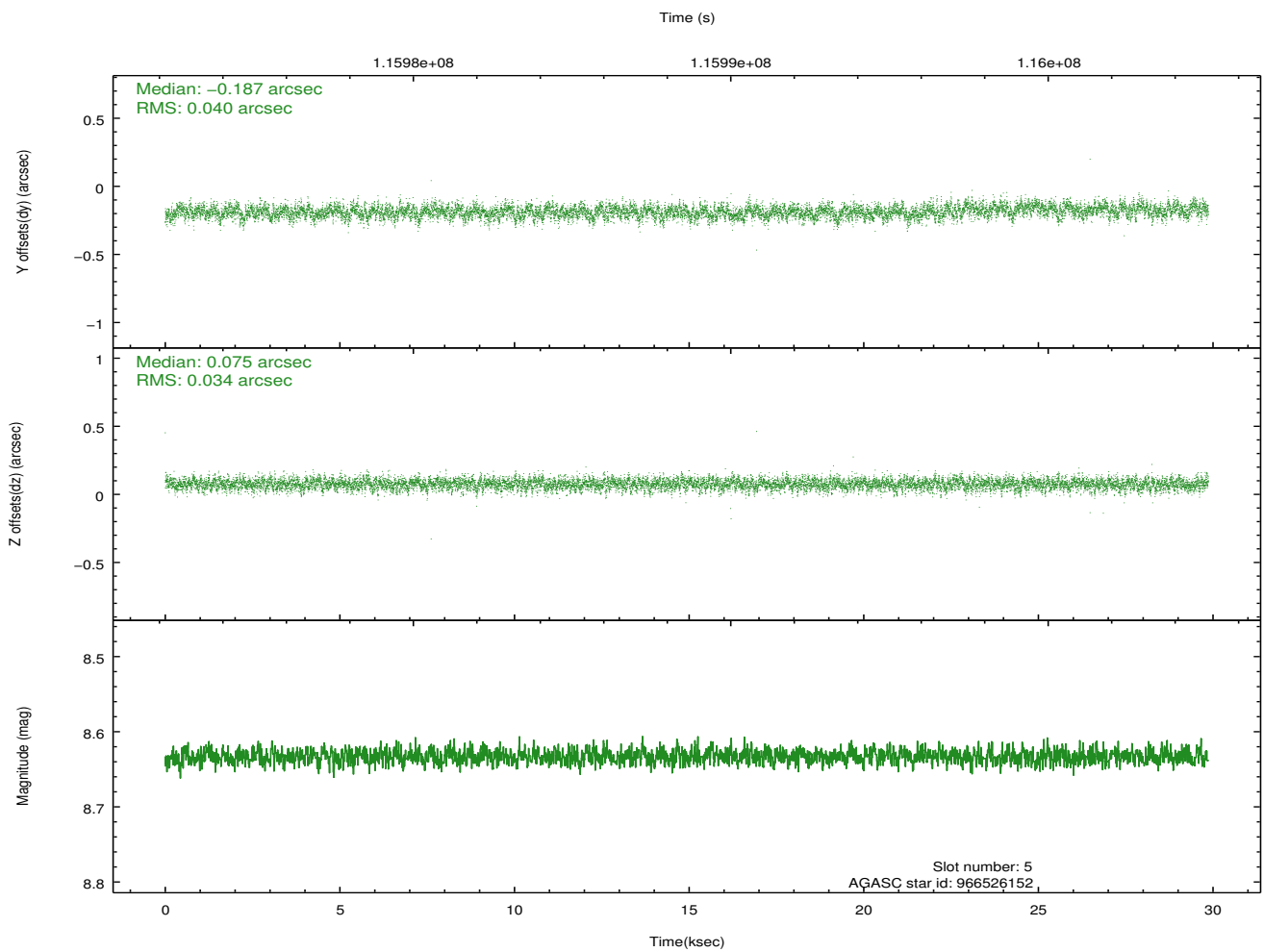
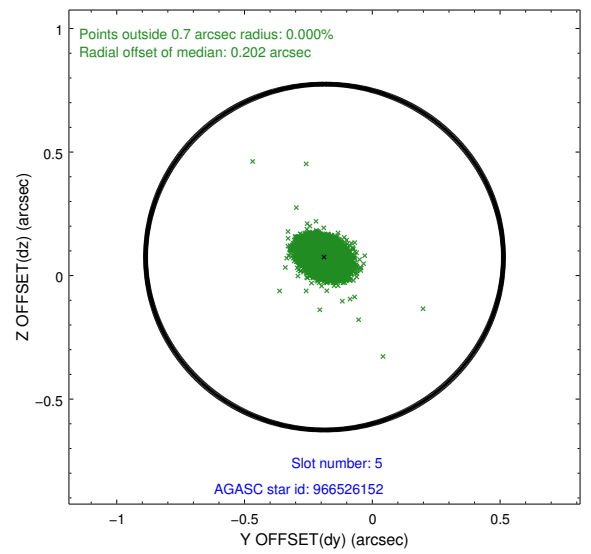
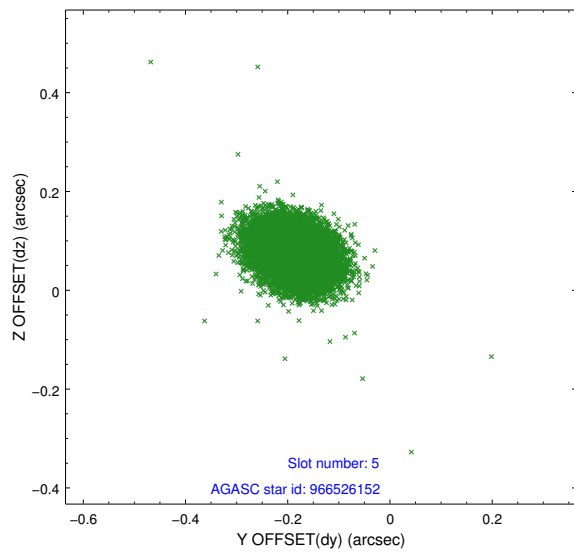
2.4.1 Slot 3



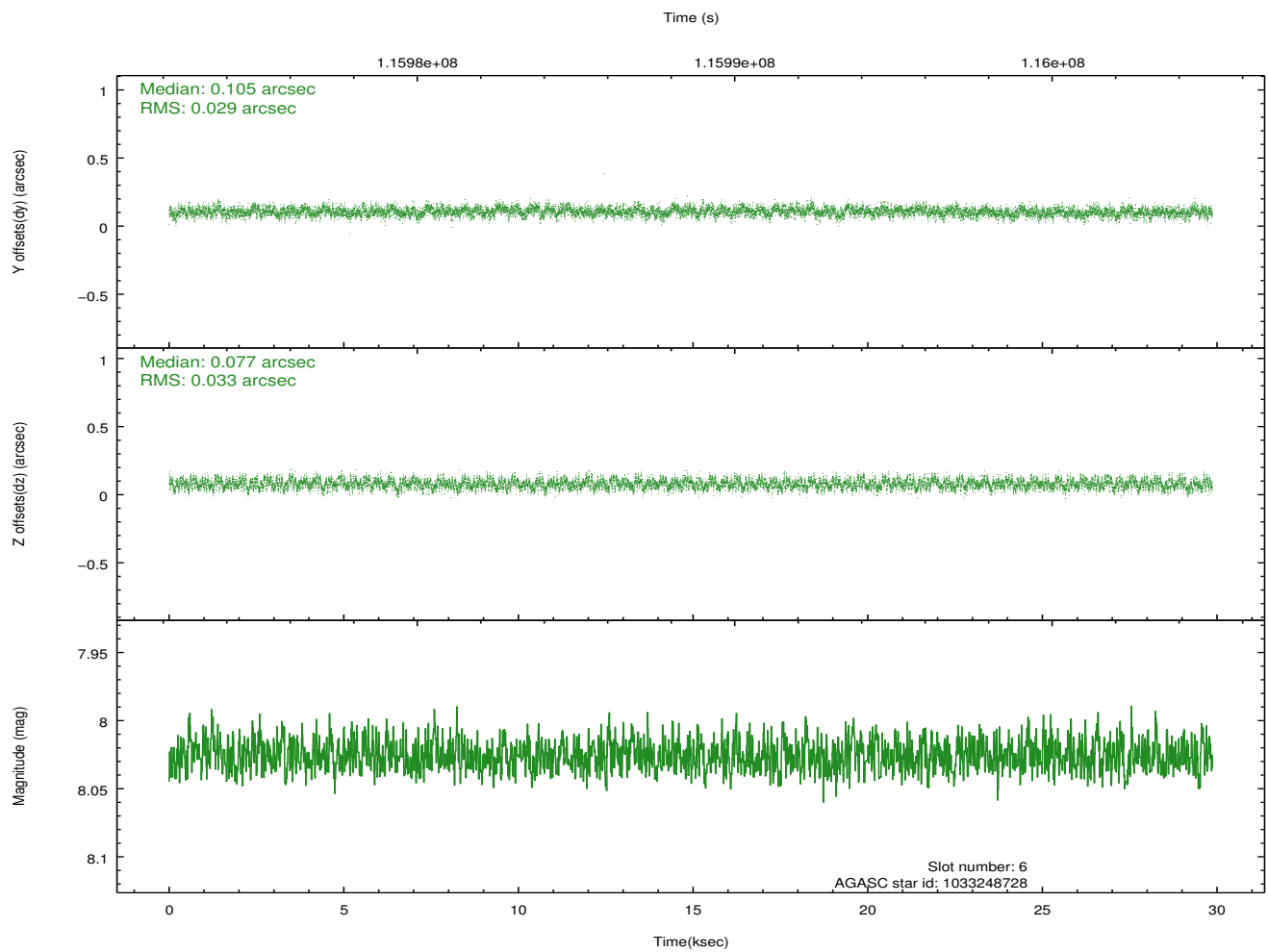
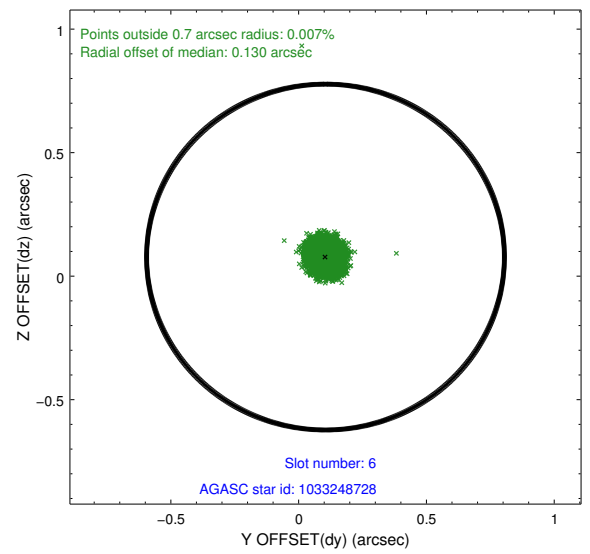
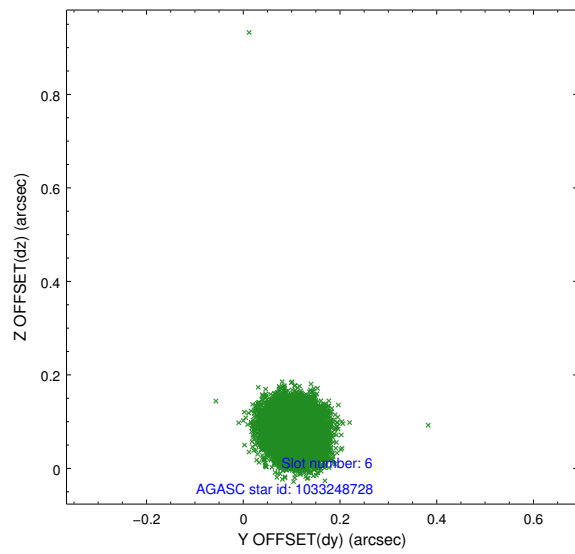
2.4.2 Slot 4



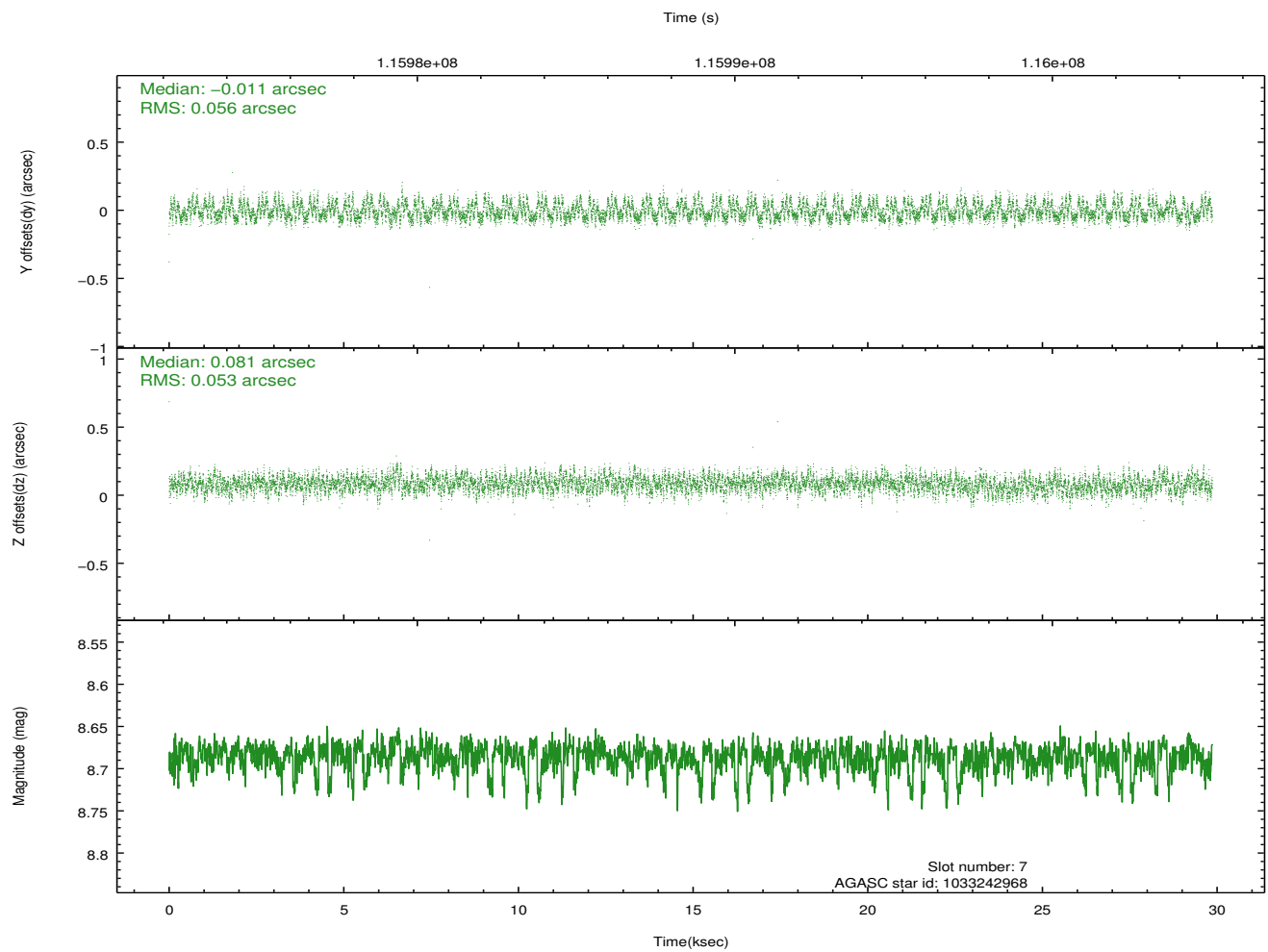
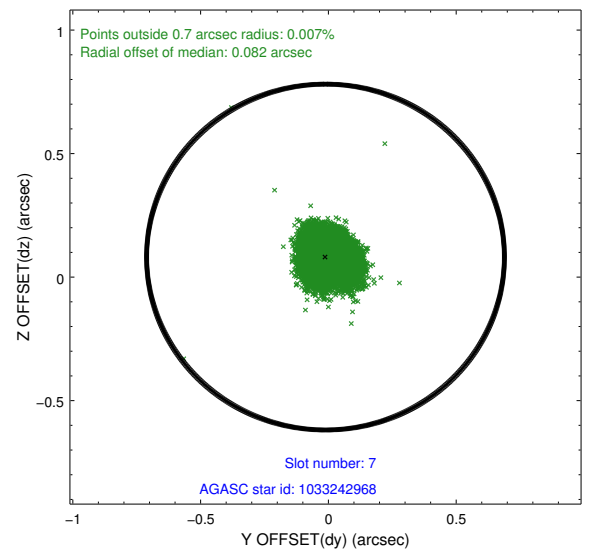
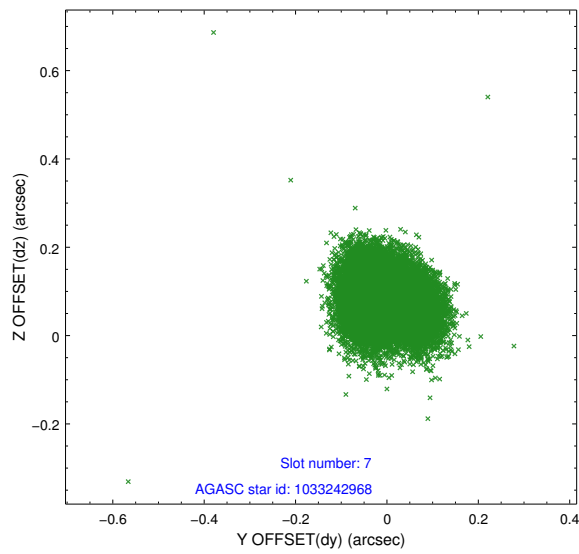
2.4.3 Slot 5



2.4.4 Slot 6

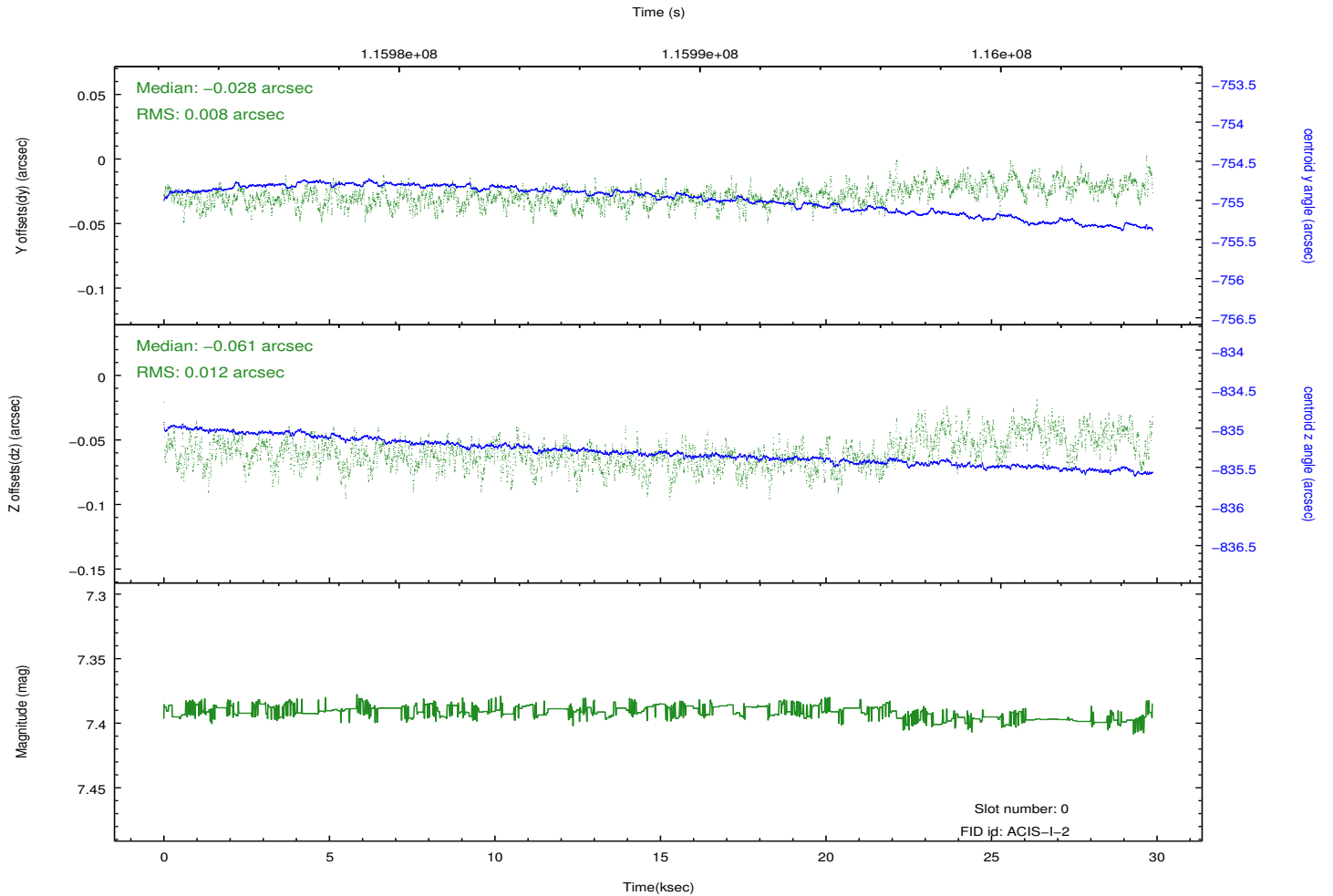
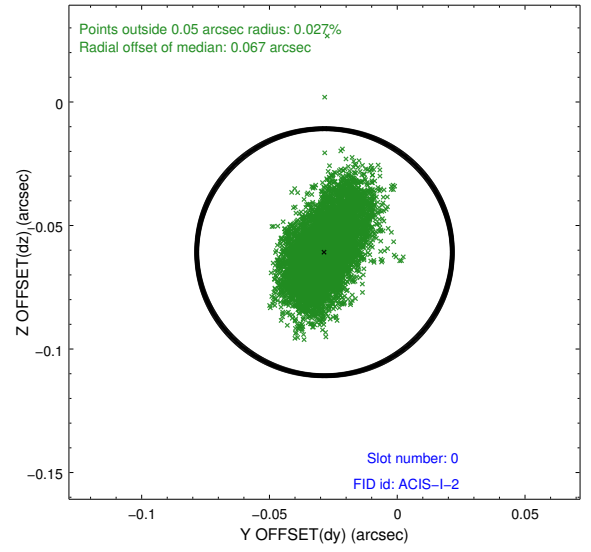
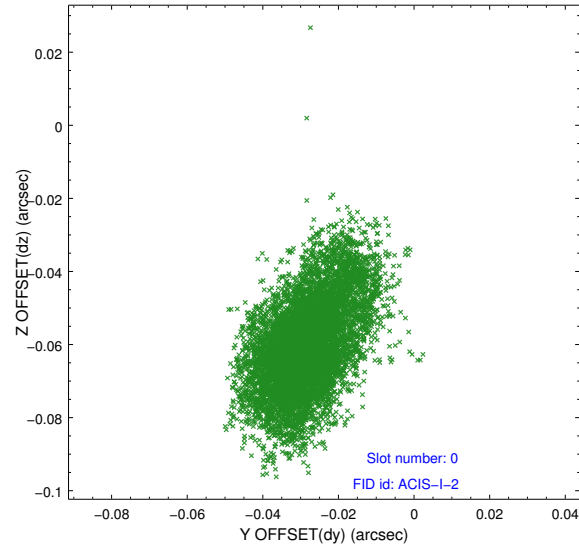


2.4.5 Slot 7

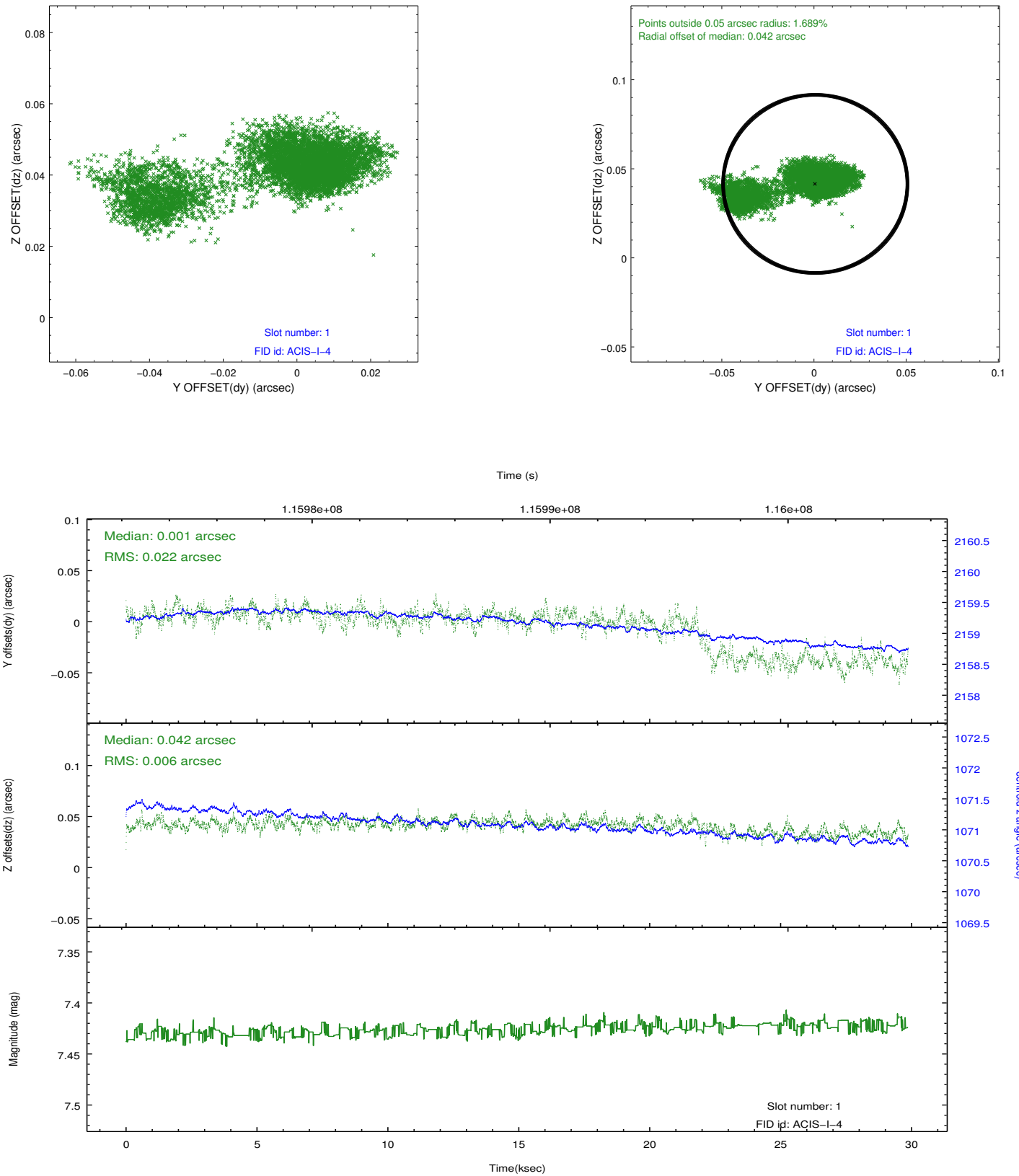


2.5 FID Slots

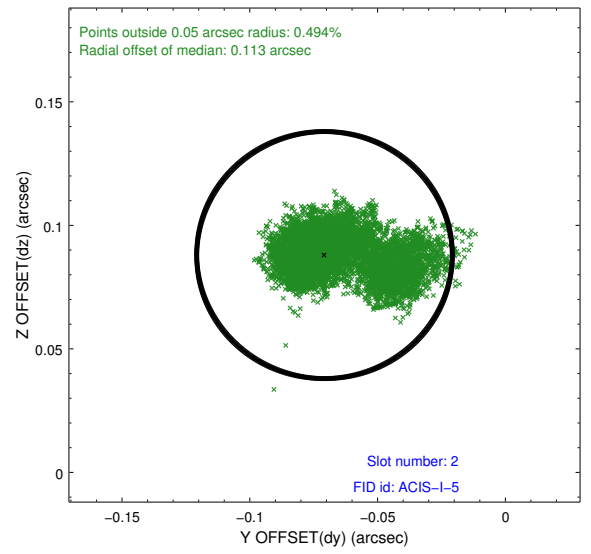
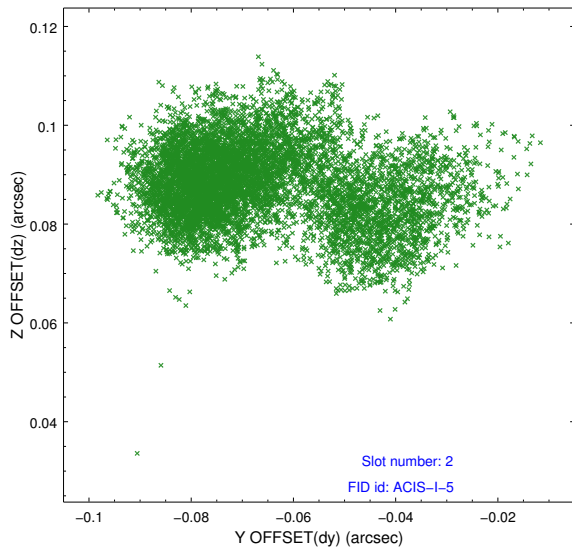
2.5.1 Slot 0



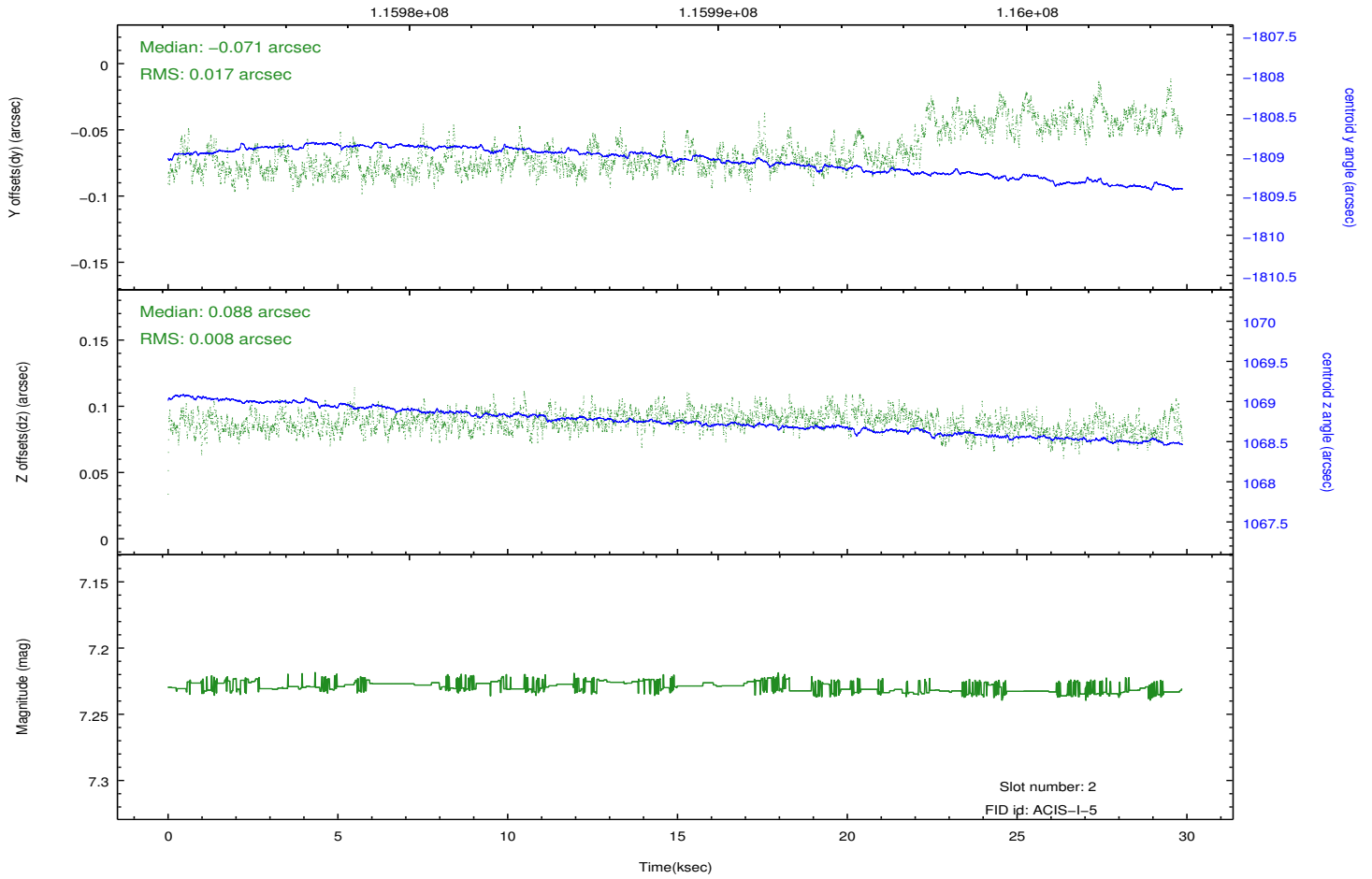
2.5.2 Slot 1



2.5.3 Slot 2



Time (s)



A Summary

A.1 Status

V&V Scientist	Beth Sundheim
V&V Date (YYYY-MM-DD)	2012.09.26
V&V Edition	1
V&V Disposition and Status	OK
V&V Charge Time	29.72

A.2 Comments