

V&V Reference Report

L2 ASCDS Version : 8.4.5

Observation 2024 - L2 Version 3
Chandra X-Ray Center

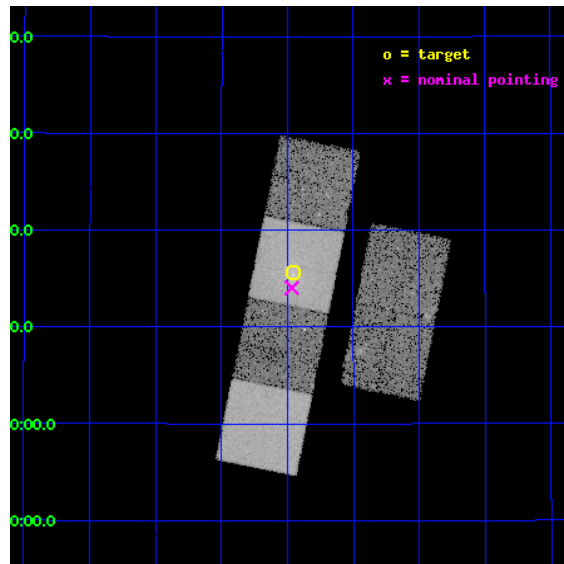
L2 Processing Date : Sep 23 2012

Contents

1	Front	2
2	OBI	3
2.1	OBI	3
2.1.1	Images	3
2.1.2	Bias	3
2.1.3	Parameters	4
2.1.4	Events	4
2.2	Compared Parameters	5
2.3	Aspect	6
2.4	Star Slots	9
2.4.1	Slot 3	9
2.4.2	Slot 4	10
2.4.3	Slot 5	11
2.4.4	Slot 6	12
2.4.5	Slot 7	13
2.5	FID Slots	14
2.5.1	Slot 0	14
2.5.2	Slot 1	15
2.5.3	Slot 2	16
A	Summary	17
A.1	Status	17
A.2	Comments	17

1 Front

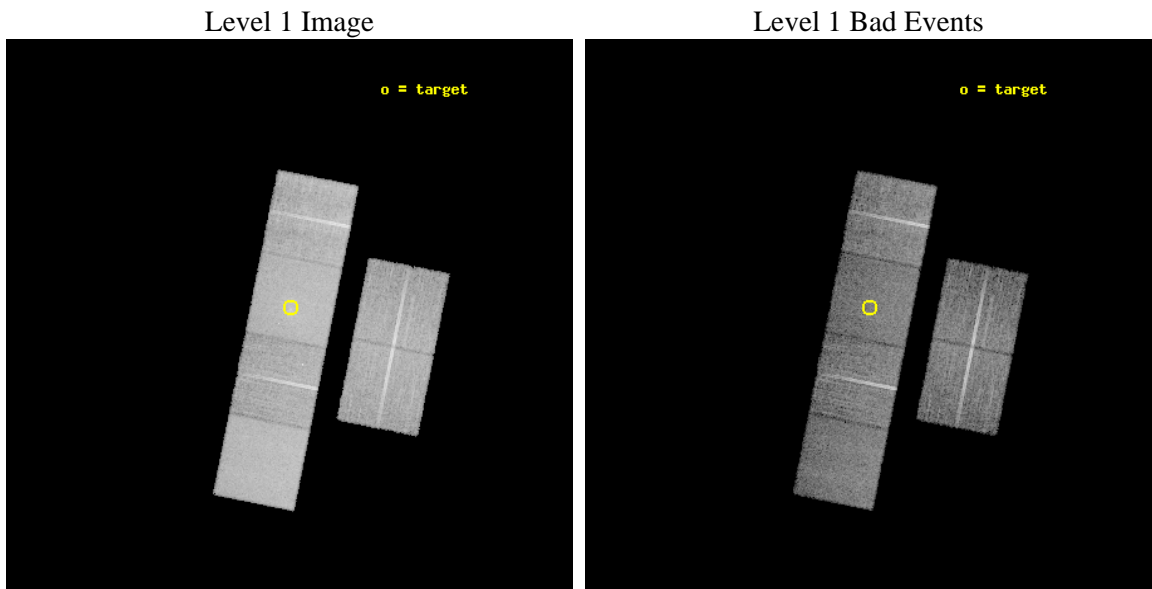
seq_num	600158	Sequence number
obs_id	2024	Observation id
title	THE X-RAY STRUCTURE OF OLD, FOSSIL GALAXY GROUPS	Proposal title
observer	Dr Laurence Jones	Principal investigator
object	RXJ1416.4+2315	Source name
dtycycle	0	
cycle	P	events from which exps? Prim/Second/Both
ra_targ	214.112917	Observer's specified target RA [deg]
dec_targ	23.259611	Observer's specified target Dec [deg]
ra_nom	214.11651614503	Nominal RA [deg]
dec_nom	23.234030948837	Nominal Dec [deg]
roll_nom	281.36240504318	Nominal Roll [deg]
revision	3	Processing version of data
ontime	14752.000013724	Sum of GTIs [s]
livetime	14565.201306962	Livetime [s]
ontime2	14752.000013724	Sum of GTIs [s]
ontime3	14752.000013724	Sum of GTIs [s]
ontime5	14752.000013724	Sum of GTIs [s]
ontime6	14752.000013724	Sum of GTIs [s]
ontime7	14752.000013724	Sum of GTIs [s]
ontime8	14748.759183064	Sum of GTIs [s]
l2events	164304	Number of level 2 events



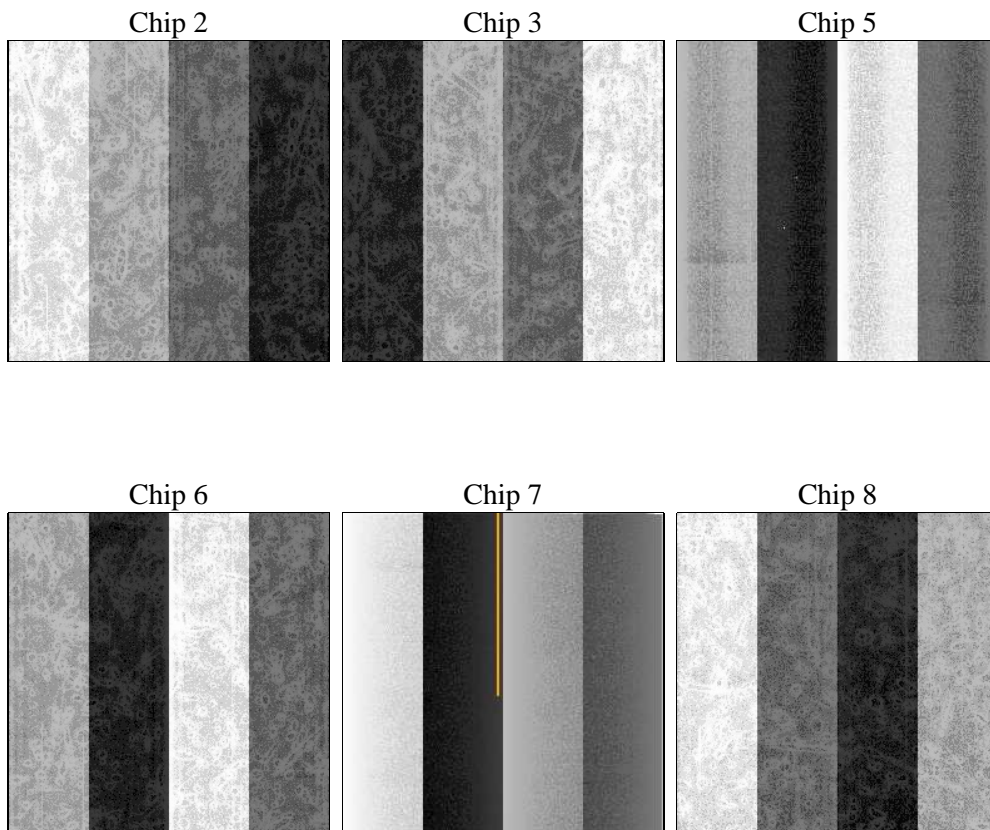
2 OBI

2.1 OBI

2.1.1 Images



2.1.2 Bias



2.1.3 Parameters

obi_num	0	Obi number	sched_exp_time	15000.000000	[s] Scheduled observation exposure time
ascdsver	8.4.5	Processing system revision	ontime	14752.000013724	Sum of GTIs [s]
caldbver	4.5.1.1	 	ontime2	14752.000013724	Sum of GTIs [s]
date	2012-09-23T15:06:09	Date and time of file creation	ontime3	14752.000013724	Sum of GTIs [s]
revision	3	Processing version of data	ontime5	14752.000013724	Sum of GTIs [s]
			ontime6	14752.000013724	Sum of GTIs [s]
			ontime7	14752.000013724	Sum of GTIs [s]
			ontime8	14748.759183064	Sum of GTIs [s]
			l1events	672676	Number of level 1 events

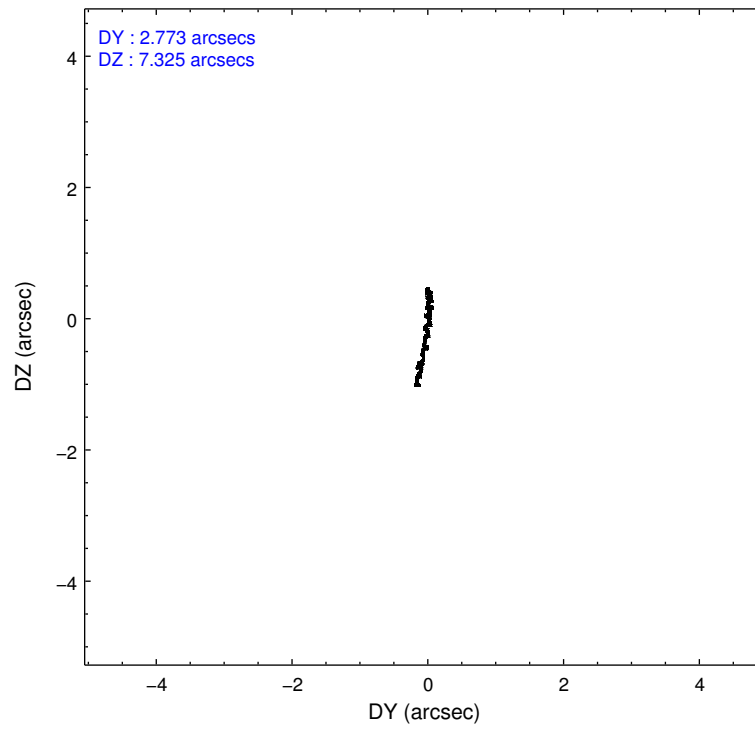
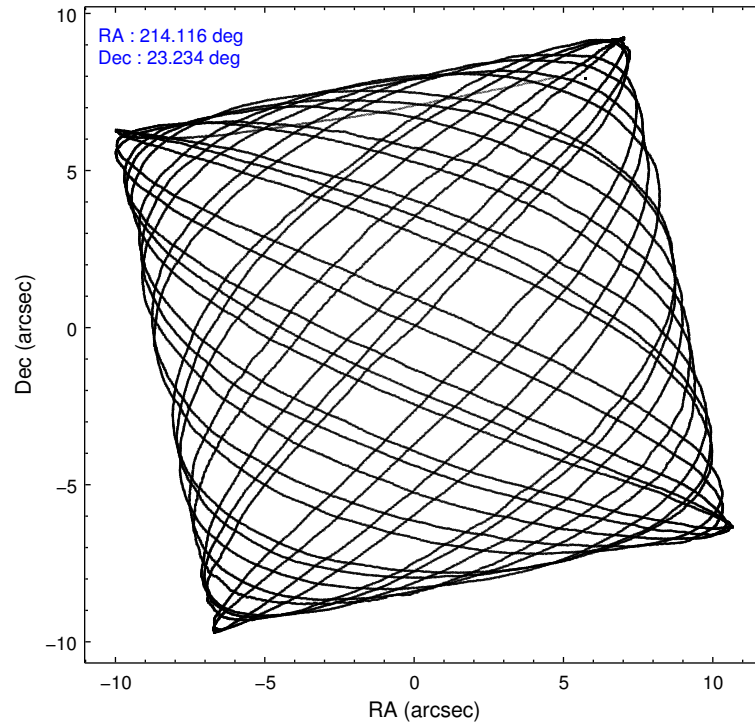
2.1.4 Events

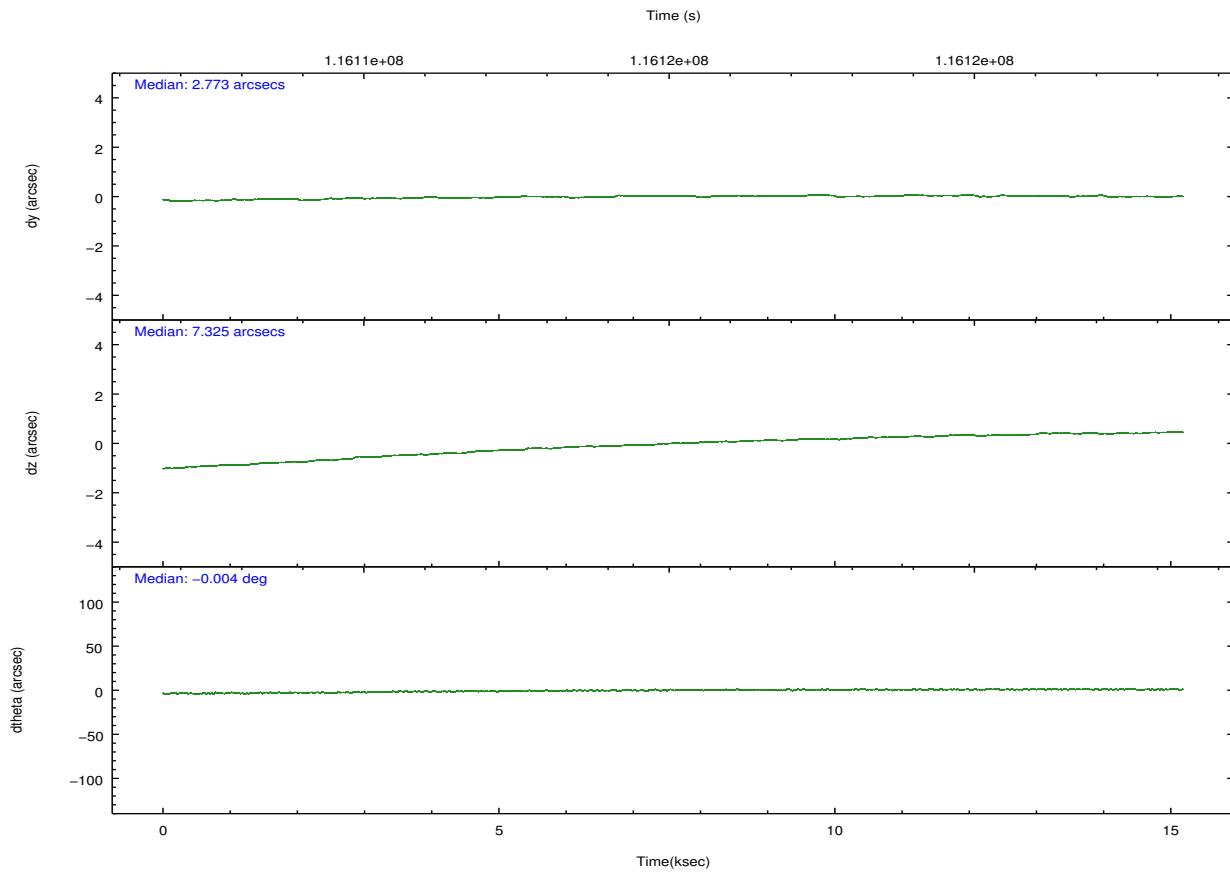
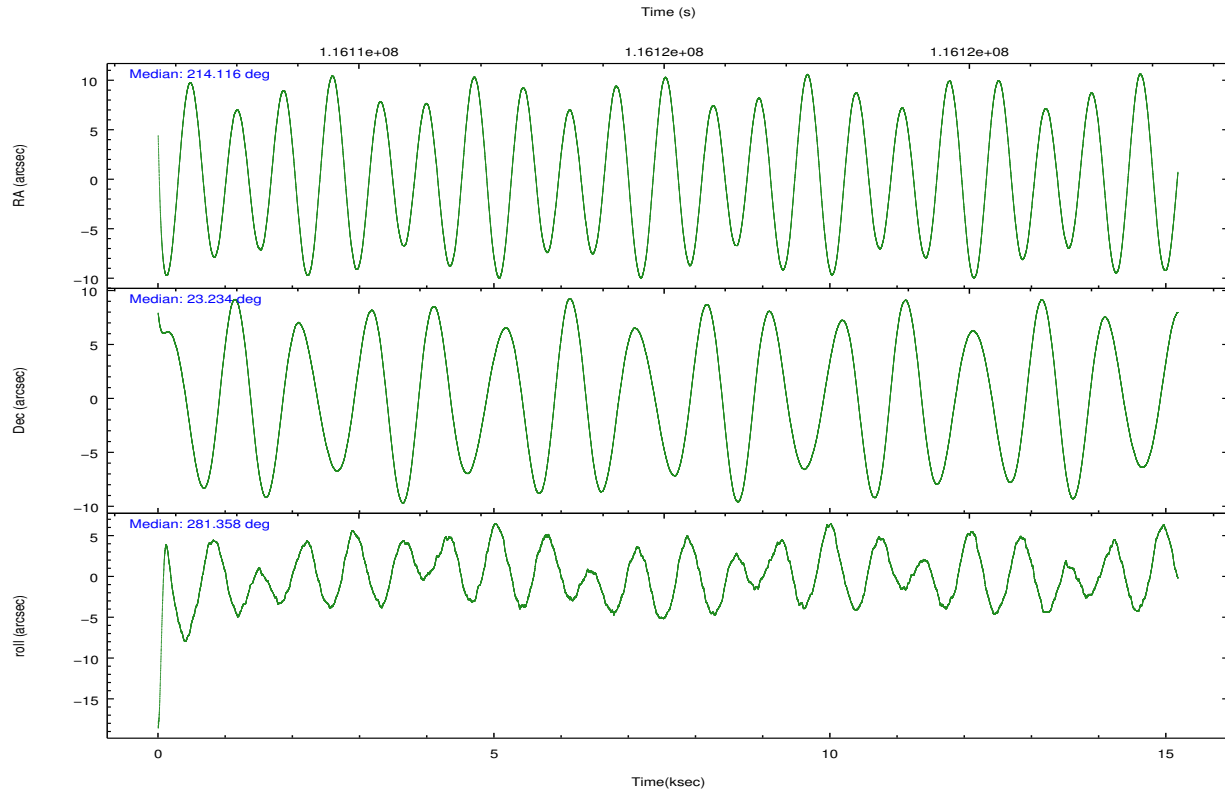
	ccd 2	ccd 3	ccd 5	ccd 6	ccd 7	ccd 8		ccd 2	ccd 3	ccd 5	ccd 6	ccd 7	ccd 8
level 1 events	96105	89505	135027	97125	133559	121355	grade 0 events	5190	4824	5265	5122	8171	7877
rejected events	84536	78502	72297	85143	70891	96900		5%	5%	3%	5%	6%	6%
rejected %	87%	87%	53%	87%	53%	79%	grade 1 events	43	42	144	38	106	79
								0%	0%	0%	0%	0%	0%
							grade 2 events	2388	2158	18349	2327	12903	5328
								2%	2%	13%	2%	9%	4%
							grade 3 events	1065	1056	2843	1152	5787	2551
								1%	1%	2%	1%	4%	2%
							grade 4 events	1010	1050	2821	1112	5701	2405
								1%	1%	2%	1%	4%	1%
							grade 5 events	3273	3579	9618	3964	11609	4906
								3%	3%	7%	4%	8%	4%
							grade 6 events	1926	1917	33480	2274	30139	6294
								2%	2%	24%	2%	22%	5%
							grade 7 events	81210	74879	62507	81136	59143	91915
								84%	83%	46%	83%	44%	75%

2.2 Compared Parameters

Parameter	Planned	Actual	Parameter	Planned	Actual
Instrument	ACIS	ACIS	Obspar format version number	7	7
Detector	ACIS-235678	ACIS-235678	Obspar file type	PREDICTED	ACTUAL
Grating	NONE	NONE	Obspar update status	NONE	UPDATED
Data mode	FAINT	FAINT	Number of optional ACIS chips dropped	0	0
Observation mode	POINTING	POINTING	On-chip summing requested	N	N
[deg] Pointing RA	214.096684	214.1165161450293	Subarray requested	NONE	NONE
[deg] Pointing Dec	23.254278	23.23403094883697	Alternating exposures requested	N	N
[deg] Pointing Roll	281.213616	281.3624050431768	[s] Primary exposure time	0.000000	3.2
[mm] SIM focus pos	-0.684267	-0.6828225247311905			
[mm] SIM defocus	0	0.001444936568705701			
[mm] SIM translation stage pos	-190.132523	-190.1400660498719			
[mm] SIM translation stage offset	0	0.00754346686406393			
[s] Observation start time (MET)	116107652.184000	116106797.10863			
Observation start date	2001-09-05T20:06:28	2001-09-05T19:53:17			
[s] Observation end time (MET)	116122652.184000	116123083.33428			
Observation end date	2001-09-06T00:16:28	2001-09-06T00:24:43			
Read mode	TIMED	TIMED			

2.3 Aspect



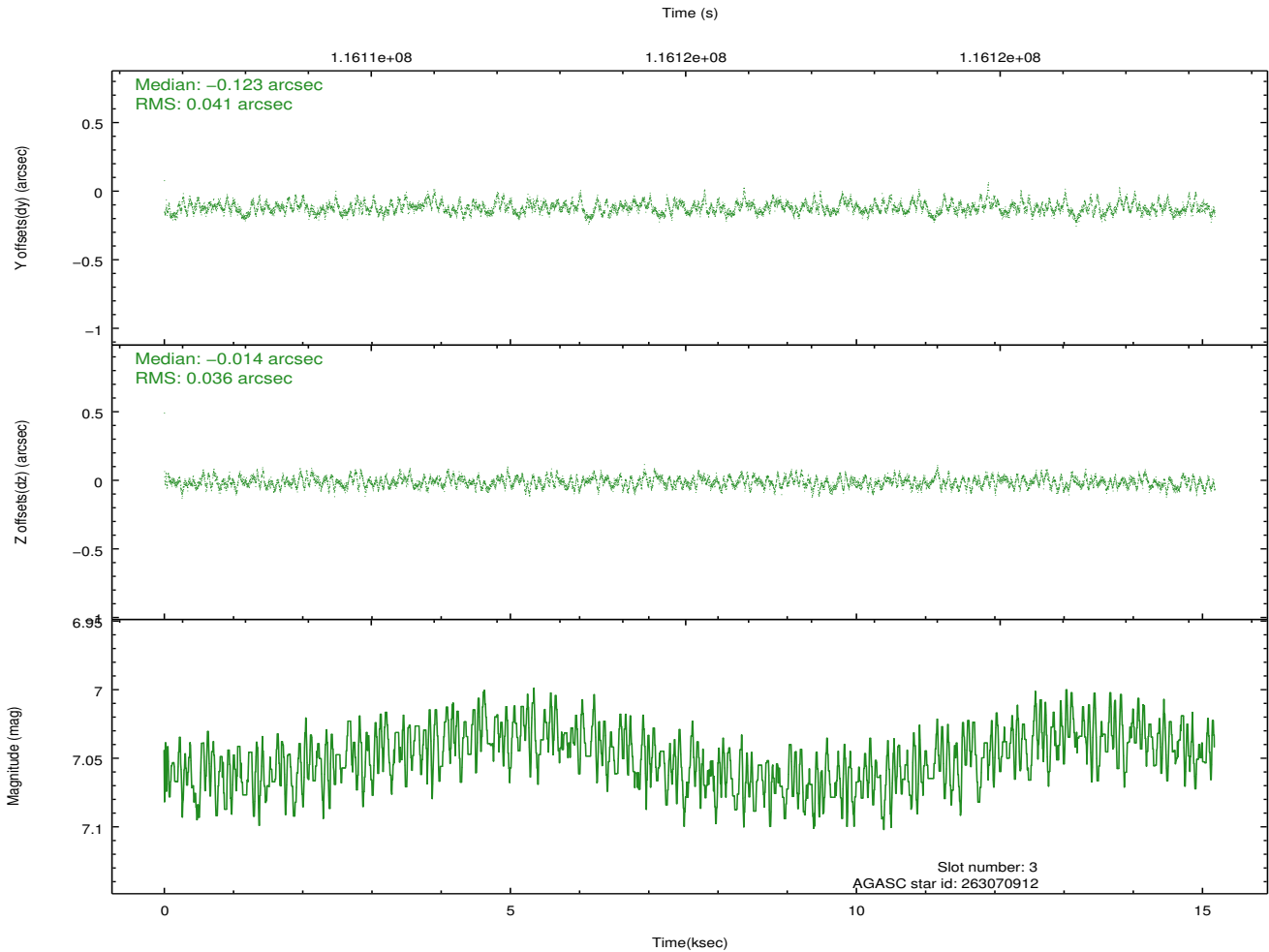
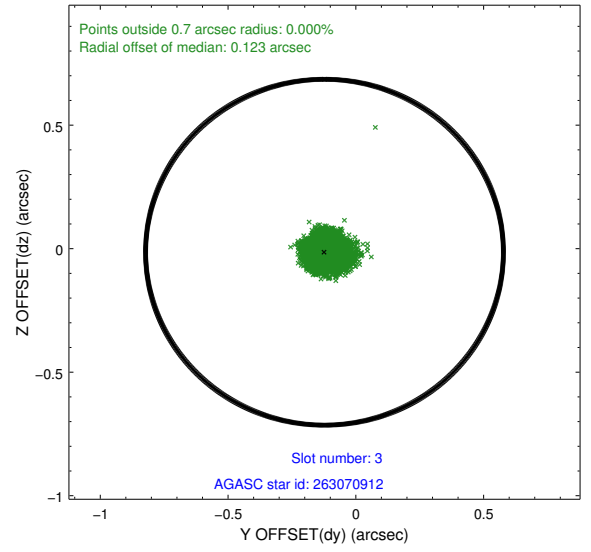
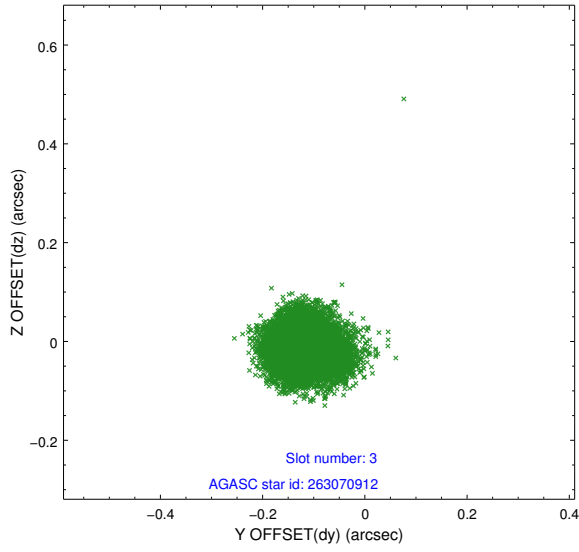


Slot Statistics

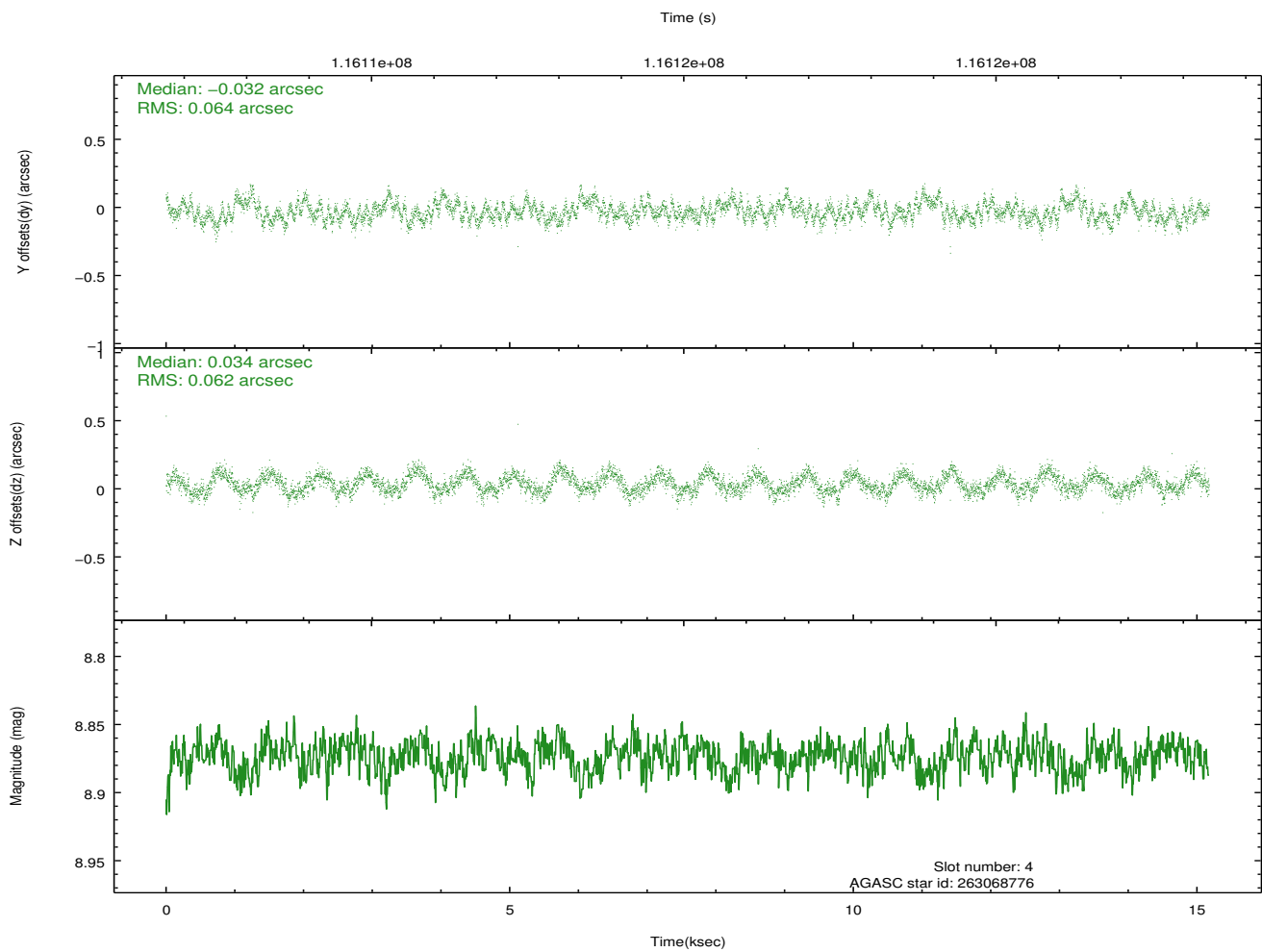
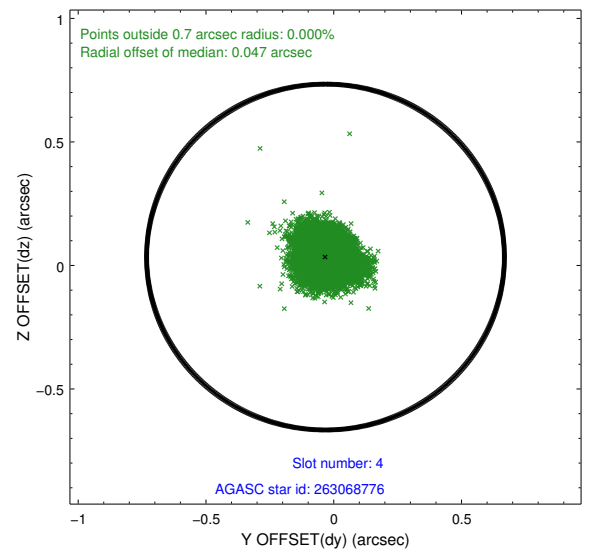
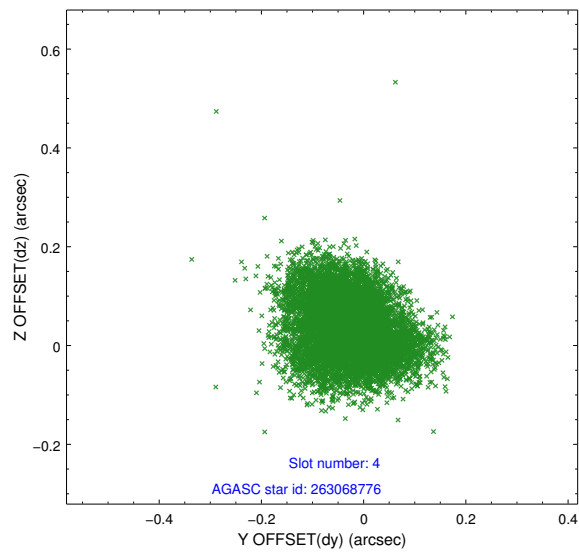
slot	status	id	mag	n_pts	med_dy	med_dz	dr1	dr2	ra	dec	mean_y	mean_z
0	FID	ACIS-S-2	7.11	3702	0.002	0.009	0.012	0.023	0.000000	0.000000	-755.38	-1728.38
1	FID	ACIS-S-4	7.20	3702	-0.068	-0.003	0.007	0.013	0.000000	0.000000	2157.69	179.79
2	FID	ACIS-S-5	7.24	3702	0.037	0.004	0.011	0.022	0.000000	0.000000	-1807.81	173.79
3	GUIDE	263070912	7.05	7405	-0.123	-0.014	0.058	0.092	213.756514	23.686063	-1743.91	-796.34
4	GUIDE	263068776	8.87	7405	-0.032	0.034	0.096	0.148	214.499885	23.608632	-994.62	1554.32
5	GUIDE	263068464	8.90	7404	0.166	0.040	0.066	0.107	214.145675	22.675072	2077.34	-244.05
6	GUIDE	263068016	9.12	7401	-0.012	0.030	0.114	0.177	214.662709	23.066822	1023.48	1709.94
7	GUIDE	263071296	9.18	7399	0.001	-0.091	0.083	0.134	213.703398	22.803526	1336.79	-1593.88

2.4 Star Slots

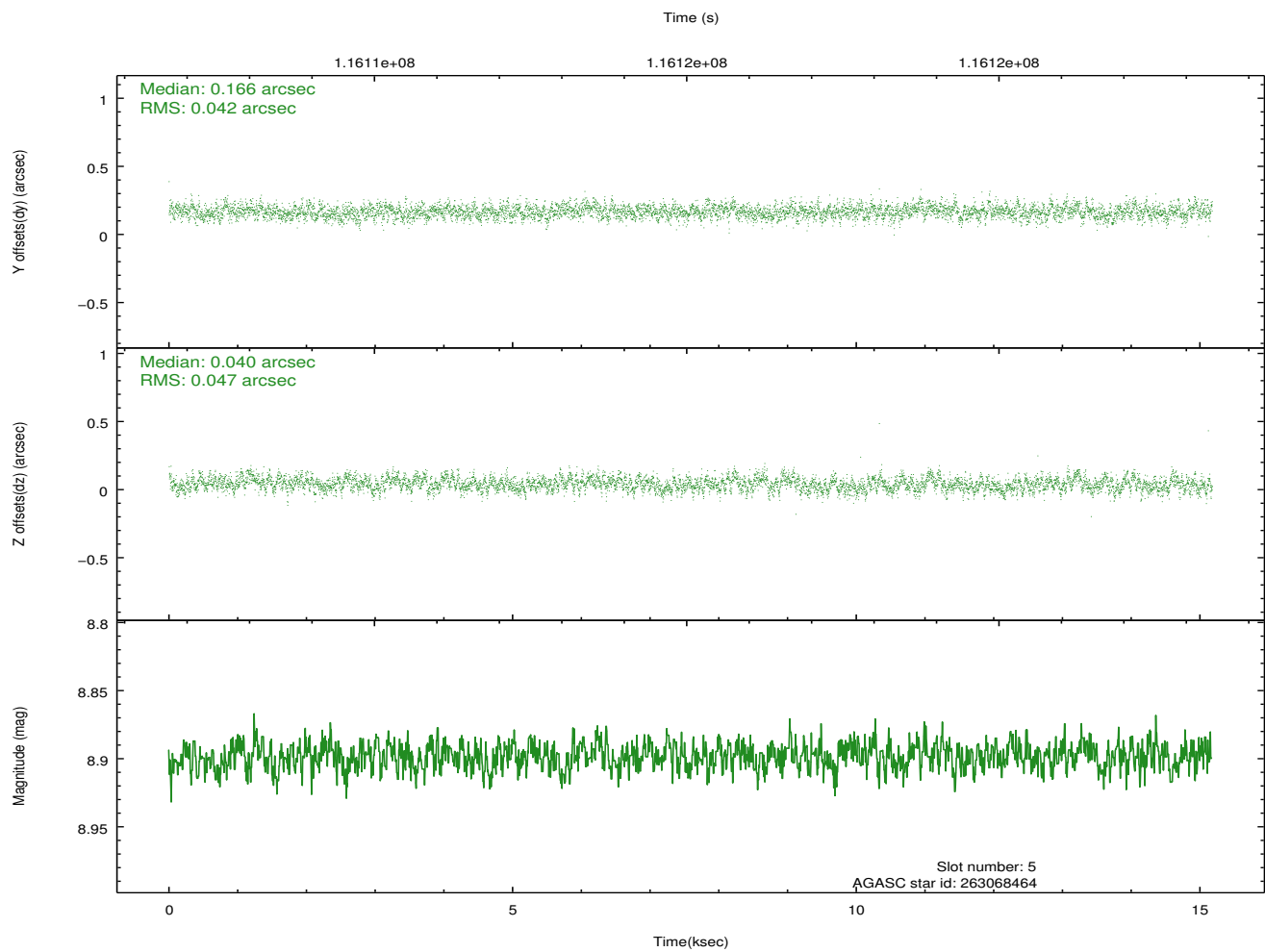
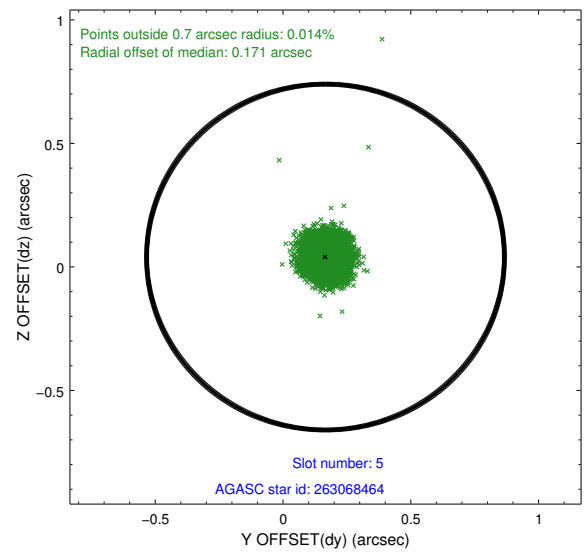
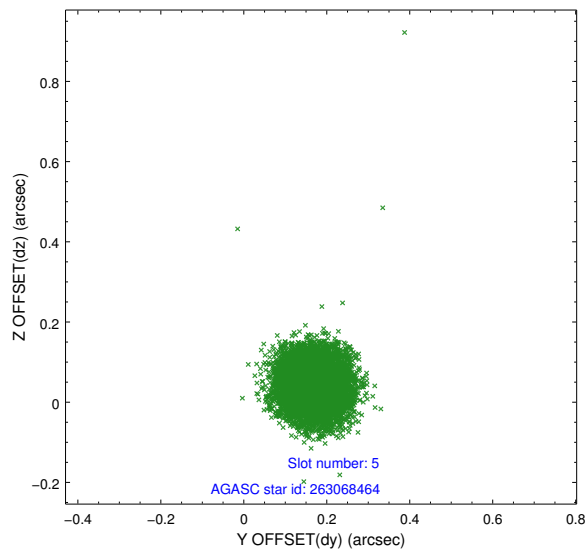
2.4.1 Slot 3



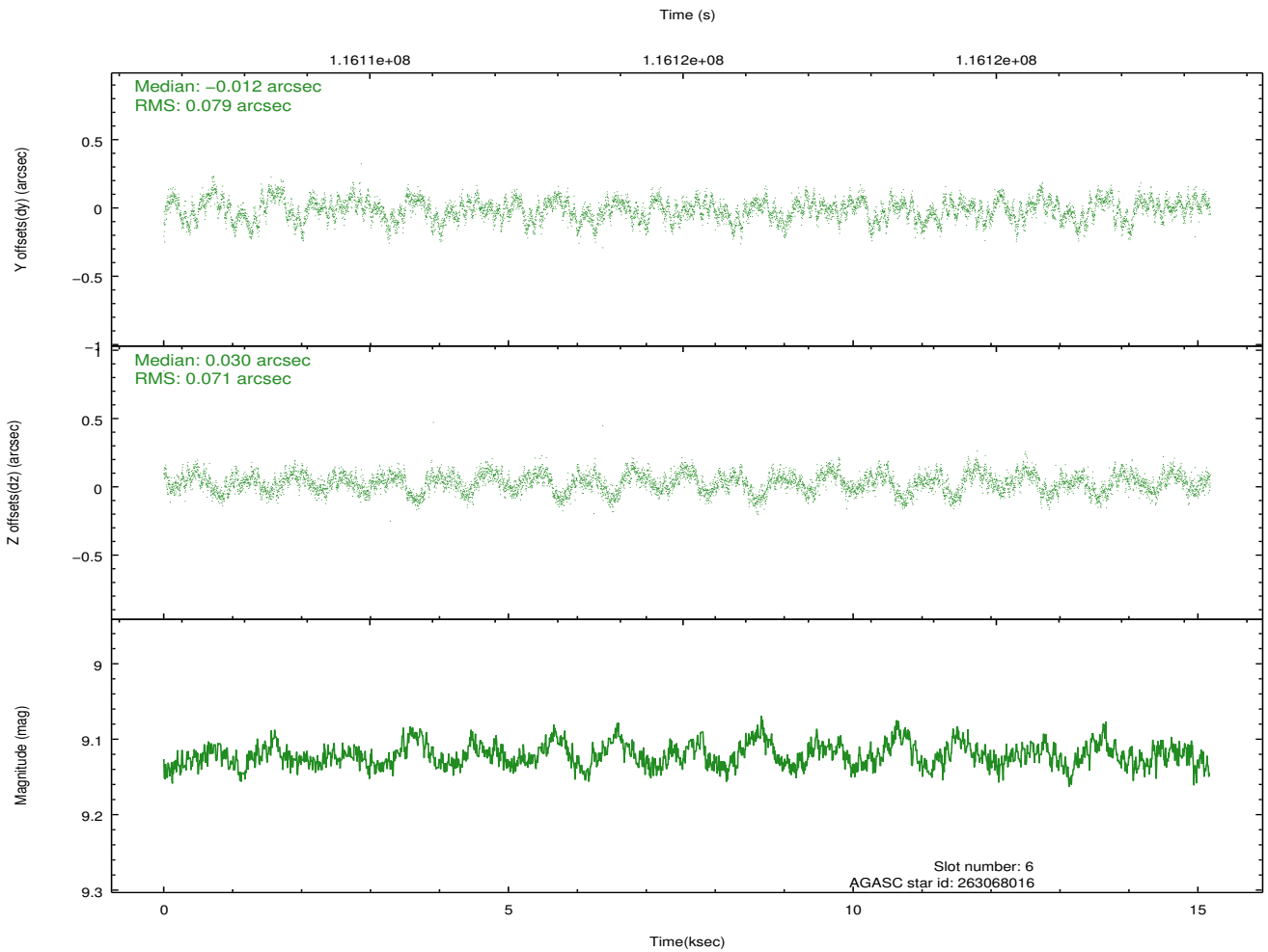
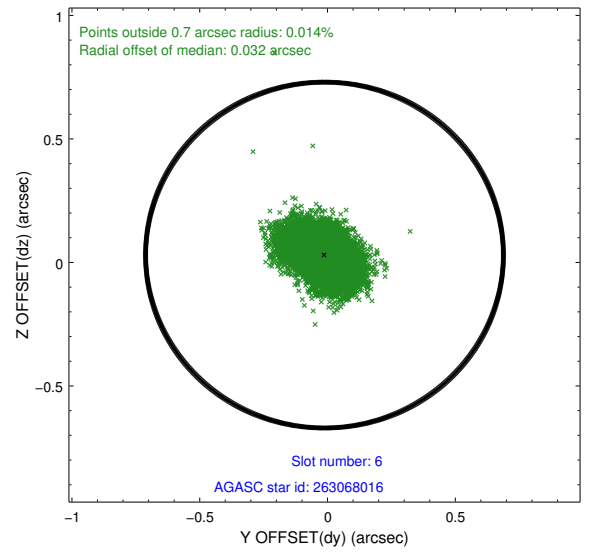
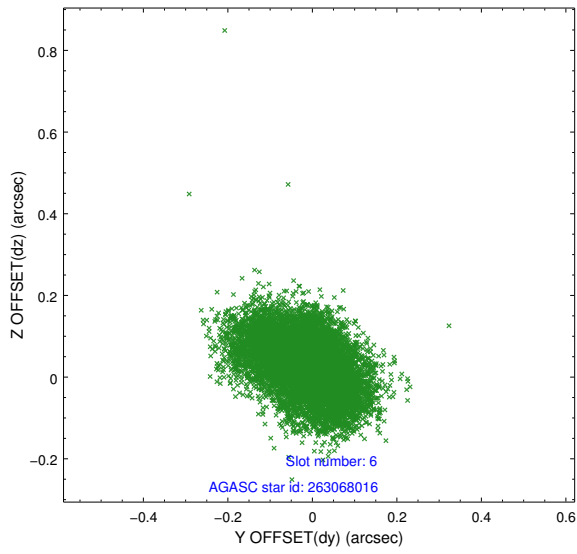
2.4.2 Slot 4



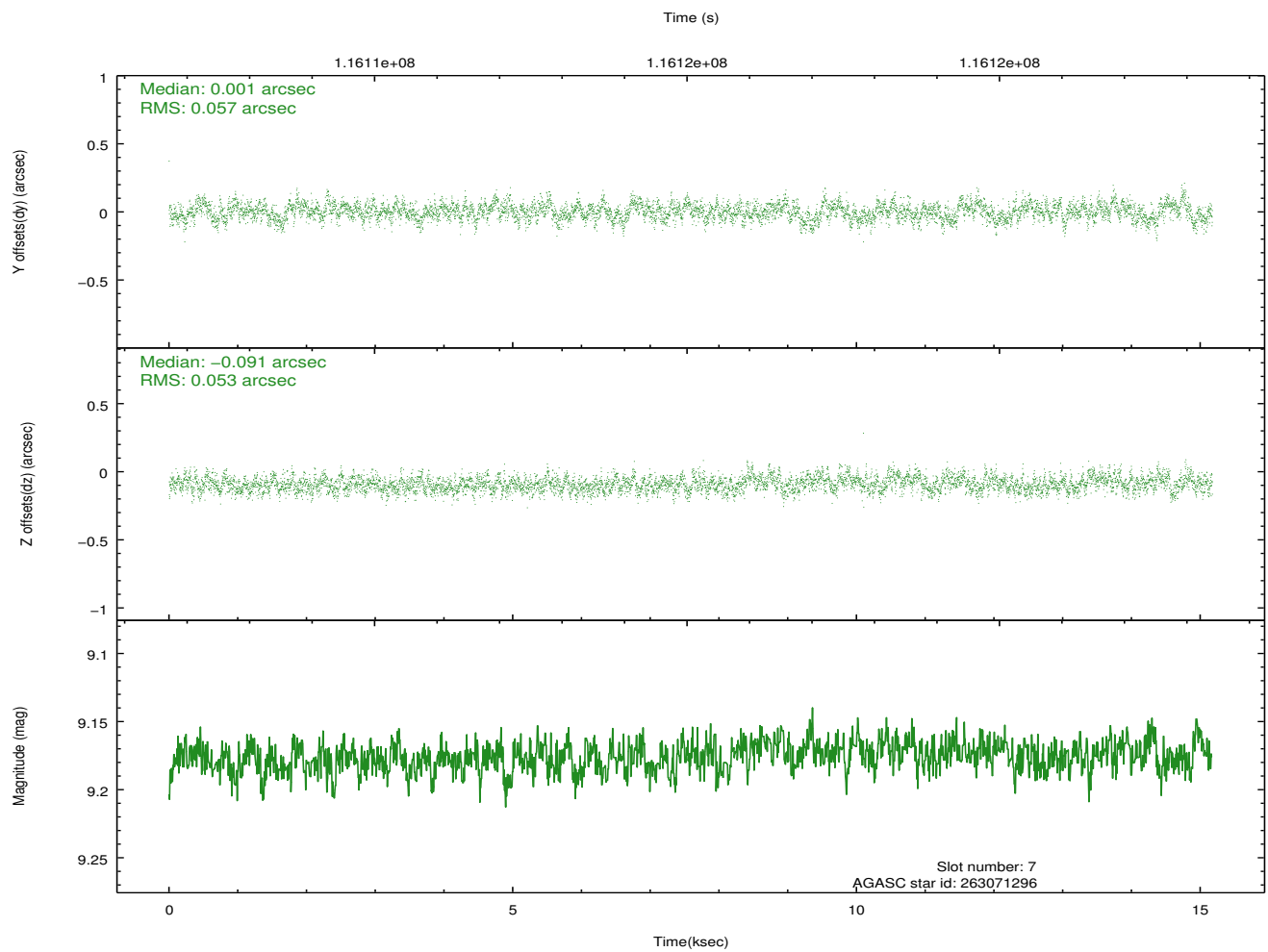
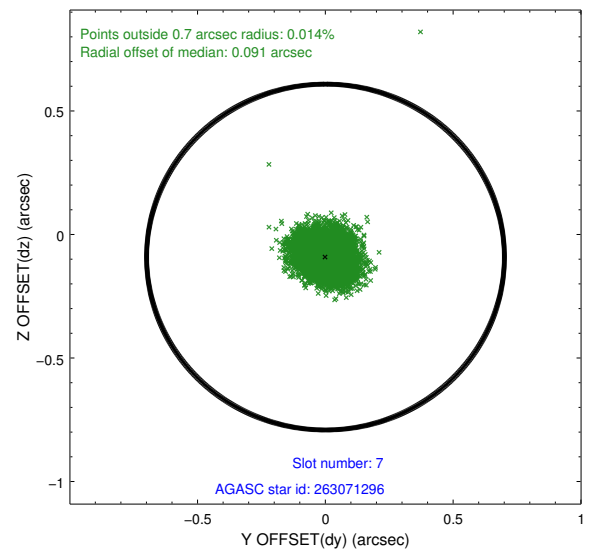
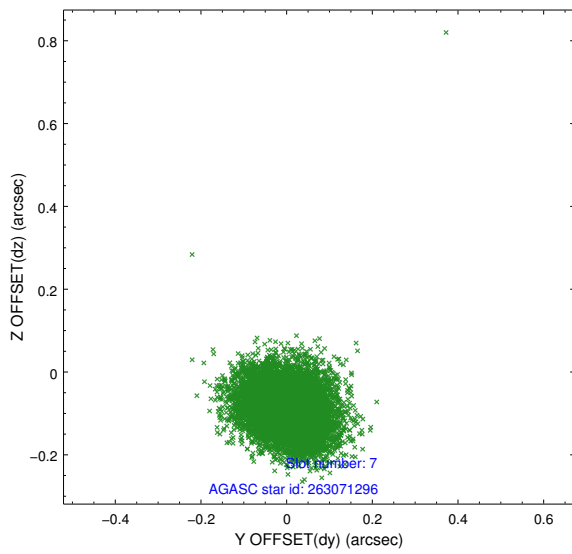
2.4.3 Slot 5



2.4.4 Slot 6

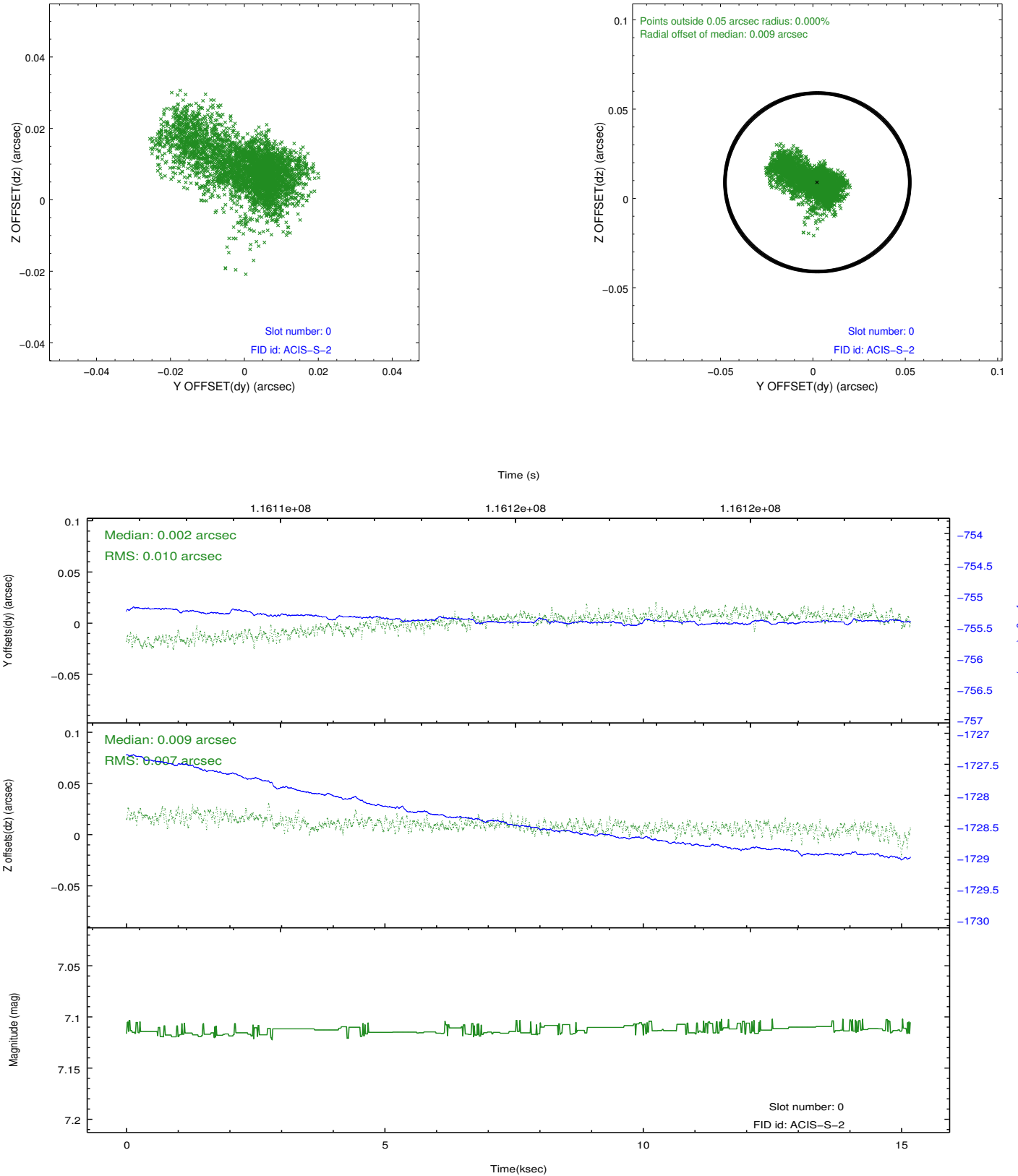


2.4.5 Slot 7

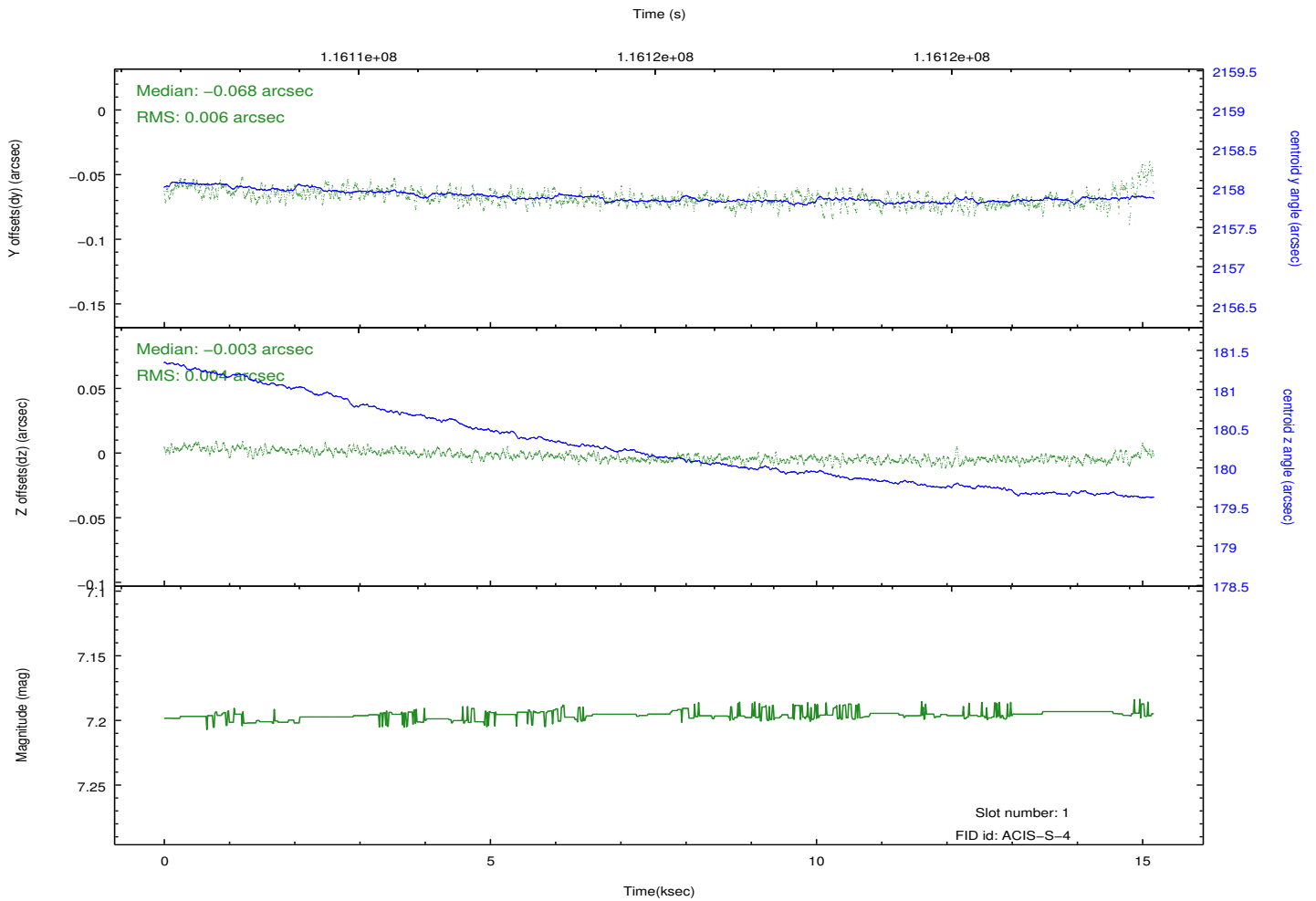
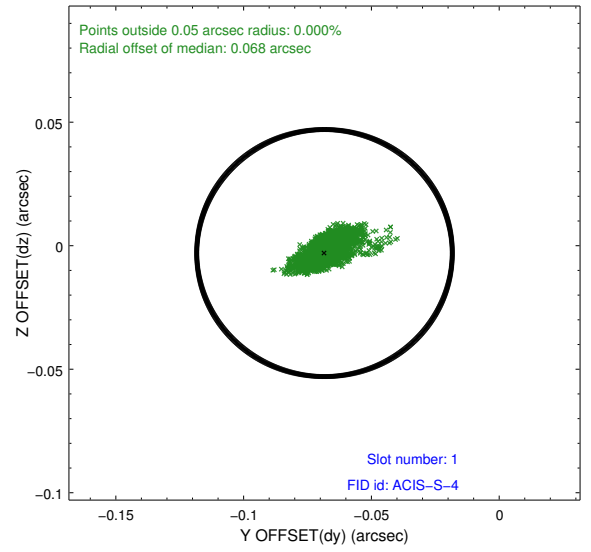
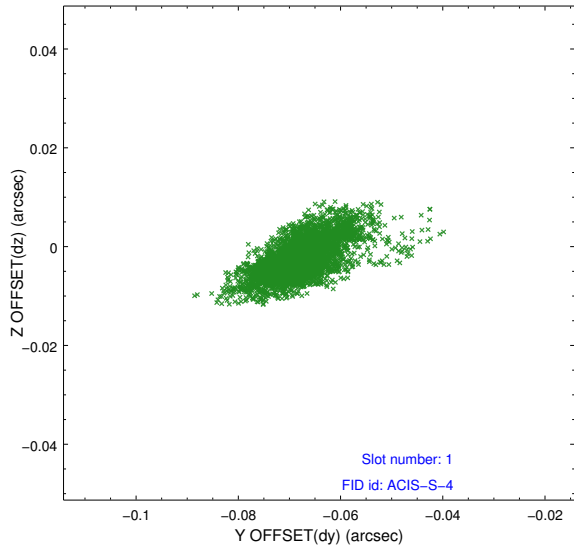


2.5 FID Slots

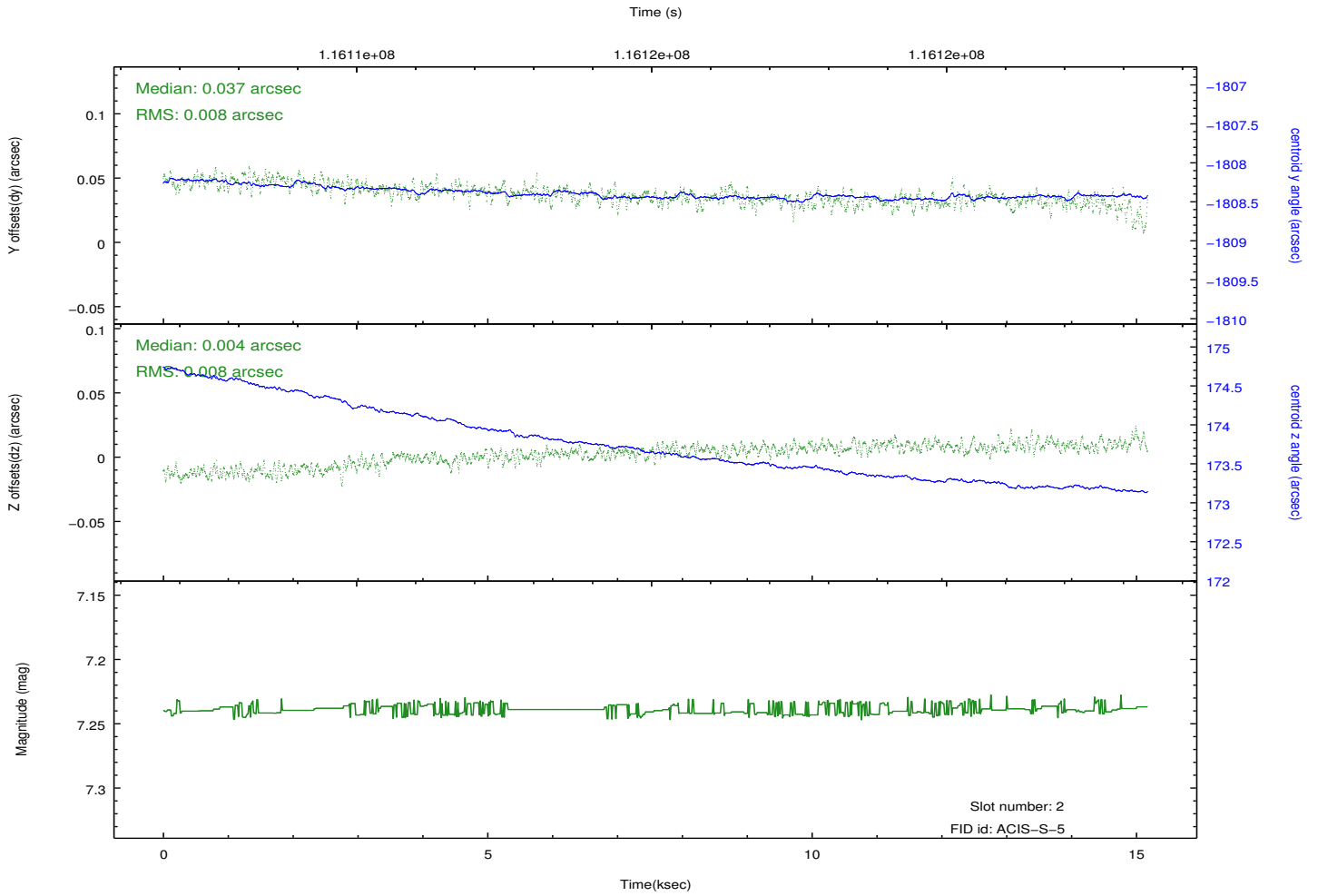
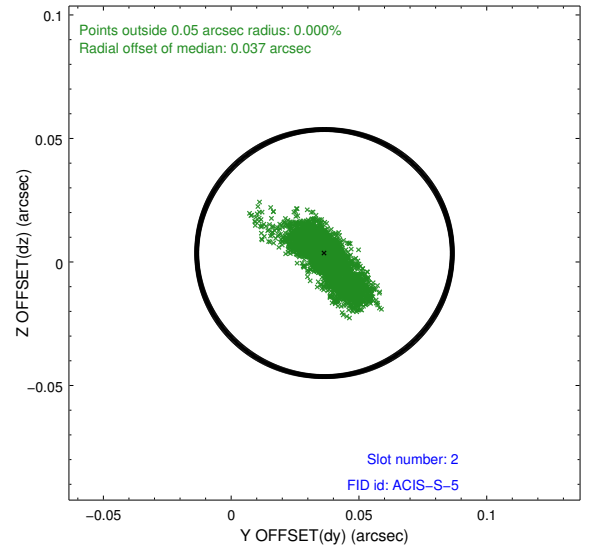
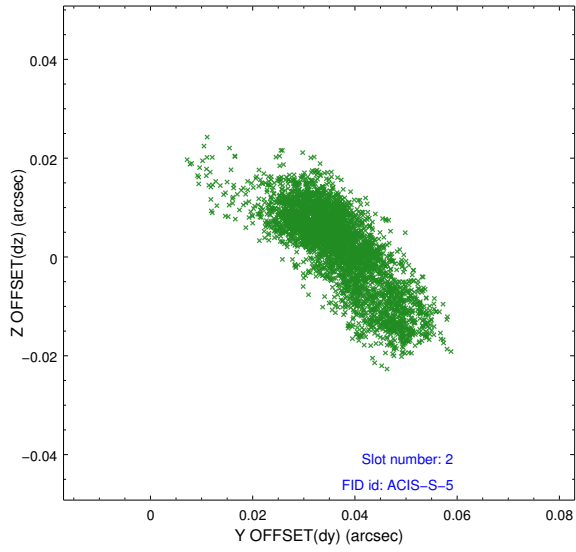
2.5.1 Slot 0



2.5.2 Slot 1



2.5.3 Slot 2



A Summary

A.1 Status

V&V Scientist	Jen Lauer
V&V Date (YYYY-MM-DD)	2012.09.26
V&V Edition	1
V&V Disposition and Status	OK
V&V Charge Time	14.76

A.2 Comments