

V&V Reference Report

L2 ASCDS Version : 8.4.5

Observation 2194 - L2 Version 3
Chandra X-Ray Center

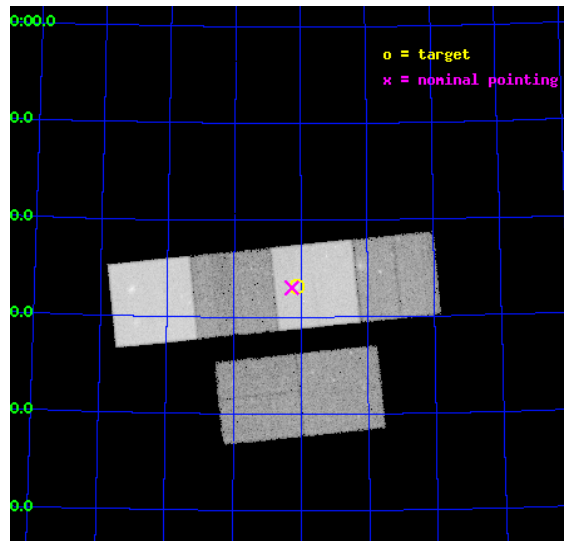
L2 Processing Date : Oct 1 2012

Contents

1	Front	2
2	OBI	3
2.1	OBI	3
2.1.1	Images	3
2.1.2	Bias	3
2.1.3	Parameters	4
2.1.4	Events	4
2.2	Compared Parameters	5
2.3	Aspect	6
2.4	Star Slots	9
2.4.1	Slot 3	9
2.4.2	Slot 4	10
2.4.3	Slot 5	11
2.4.4	Slot 6	12
2.4.5	Slot 7	13
2.5	FID Slots	14
2.5.1	Slot 0	14
2.5.2	Slot 1	15
2.5.3	Slot 2	16
A	Summary	17
A.1	Status	17
A.2	Comments	17

1 Front

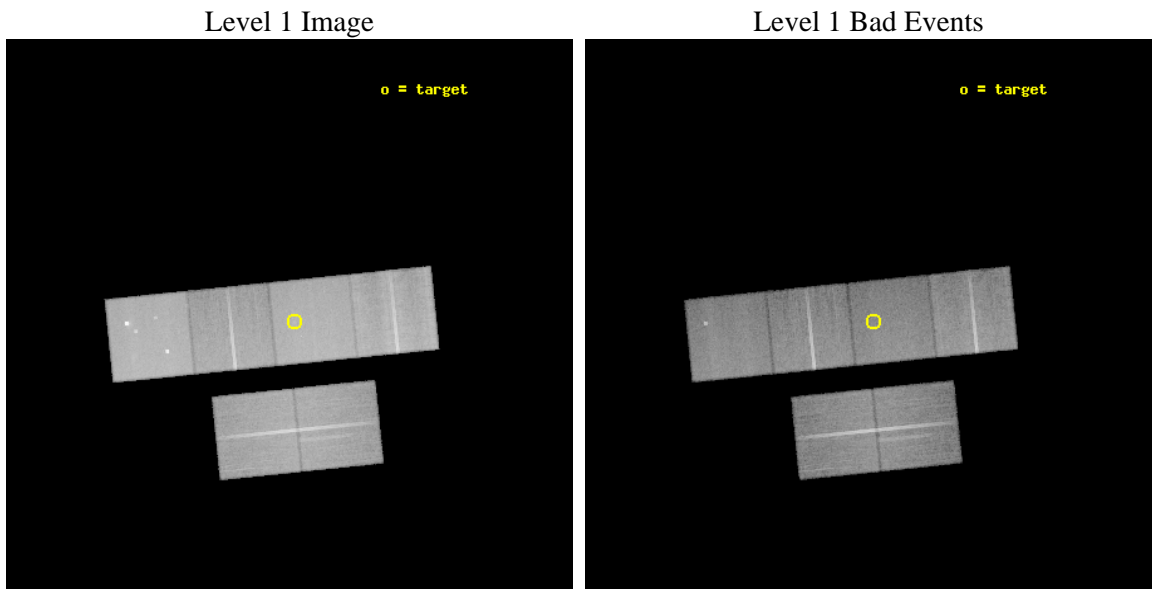
seq_num	700384	Sequence number
obs_id	2194	Observation id
title	EXPLORING INVERSE COMPTON X-RAYS FROM LOBES OF RADIO GALAXIES	Prop
observer	Dr. Naoki Isobe	Principal investigator
object	3C 427.1	Source name
dtycycle	0	
cycle	P	events from which exps? Prim/Second/Both
ra_targ	316.026667	Observer's specified target RA [deg]
dec_targ	76.553333	Observer's specified target Dec [deg]
ra_nom	316.0669021222	Nominal RA [deg]
dec_nom	76.550647692068	Nominal Dec [deg]
roll_nom	354.18880368984	Nominal Roll [deg]
revision	3	Processing version of data
ontime	39958.400037199	Sum of GTIs [s]
livetime	39452.422715868	Livetime [s]
ontime2	39958.400037199	Sum of GTIs [s]
ontime3	39958.400037199	Sum of GTIs [s]
ontime5	39958.400037199	Sum of GTIs [s]
ontime6	39958.400037199	Sum of GTIs [s]
ontime7	39958.400037199	Sum of GTIs [s]
ontime8	39958.400037199	Sum of GTIs [s]
l2events	404937	Number of level 2 events



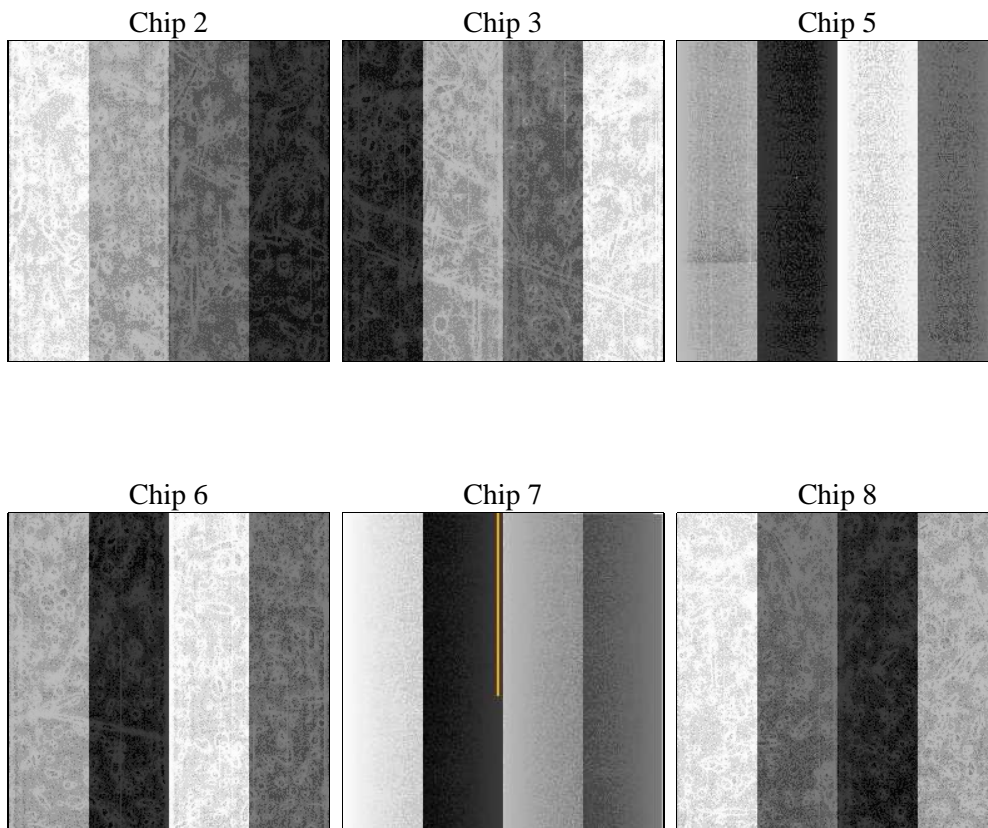
2 OBI

2.1 OBI

2.1.1 Images



2.1.2 Bias



2.1.3 Parameters

obi_num	4	Obi number	sched_exp_time	40000.000000	[s] Scheduled observation exposure time
ascdsver	8.4.5	Processing system revision	ontime	39958.400037199	Sum of GTIs [s]
caldbver	4.5.2	 	ontime2	39958.400037199	Sum of GTIs [s]
date	2012-10-01T05:48:07	Date and time of file creation	ontime3	39958.400037199	Sum of GTIs [s]
revision	3	Processing version of data	ontime5	39958.400037199	Sum of GTIs [s]
			ontime6	39958.400037199	Sum of GTIs [s]
			ontime7	39958.400037199	Sum of GTIs [s]
			ontime8	39958.400037199	Sum of GTIs [s]
			l1events	1826937	Number of level 1 events

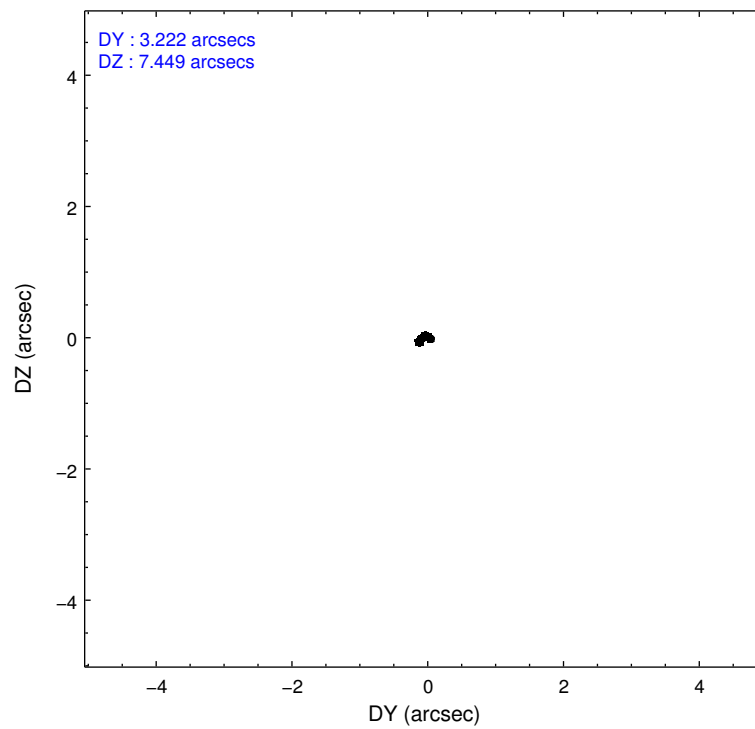
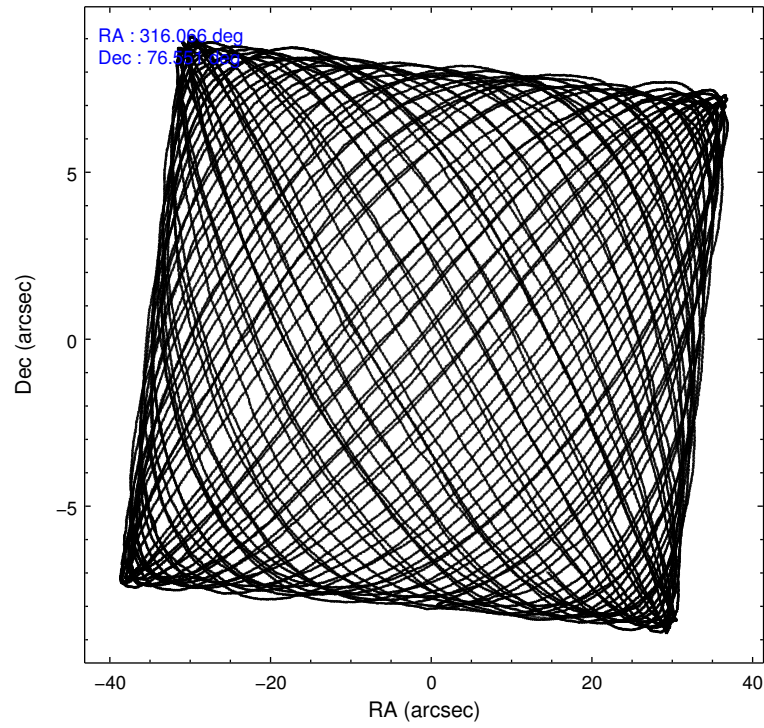
2.1.4 Events

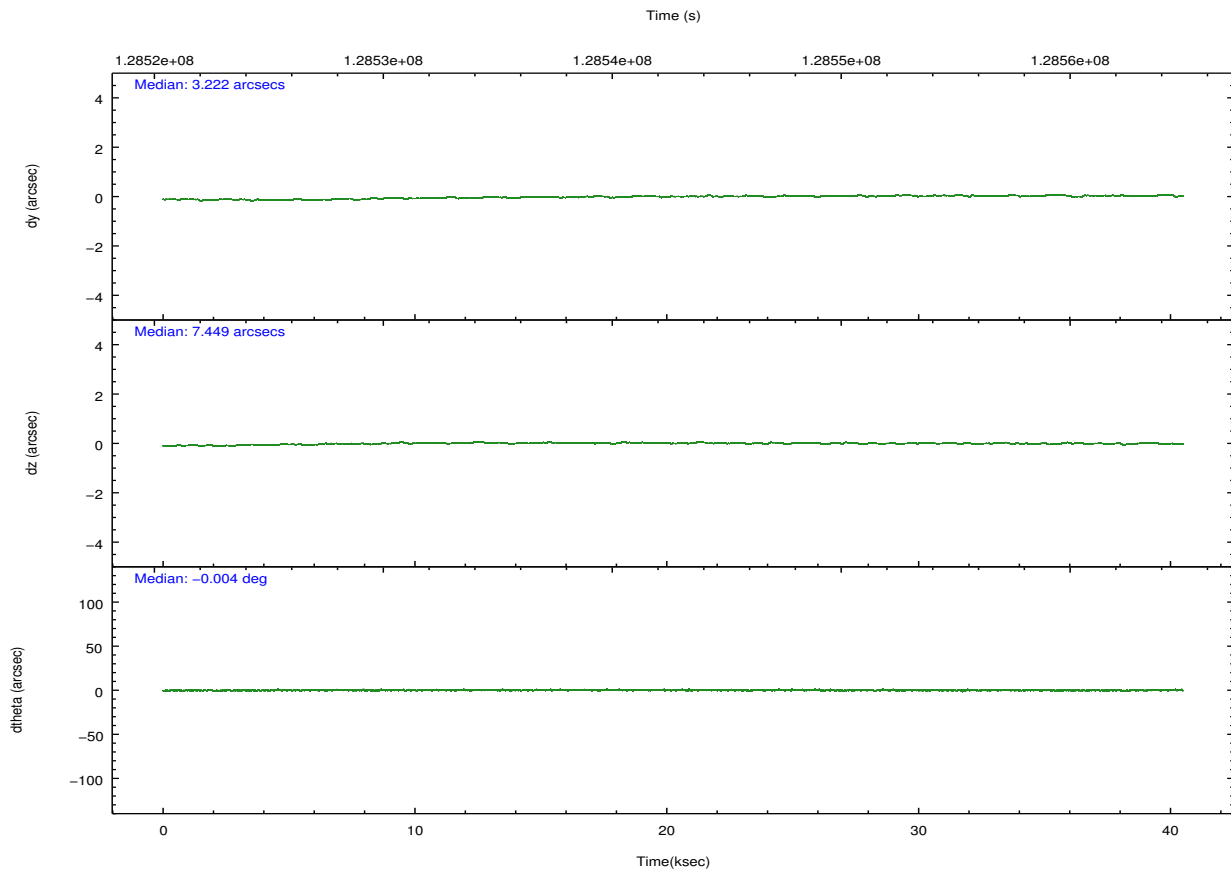
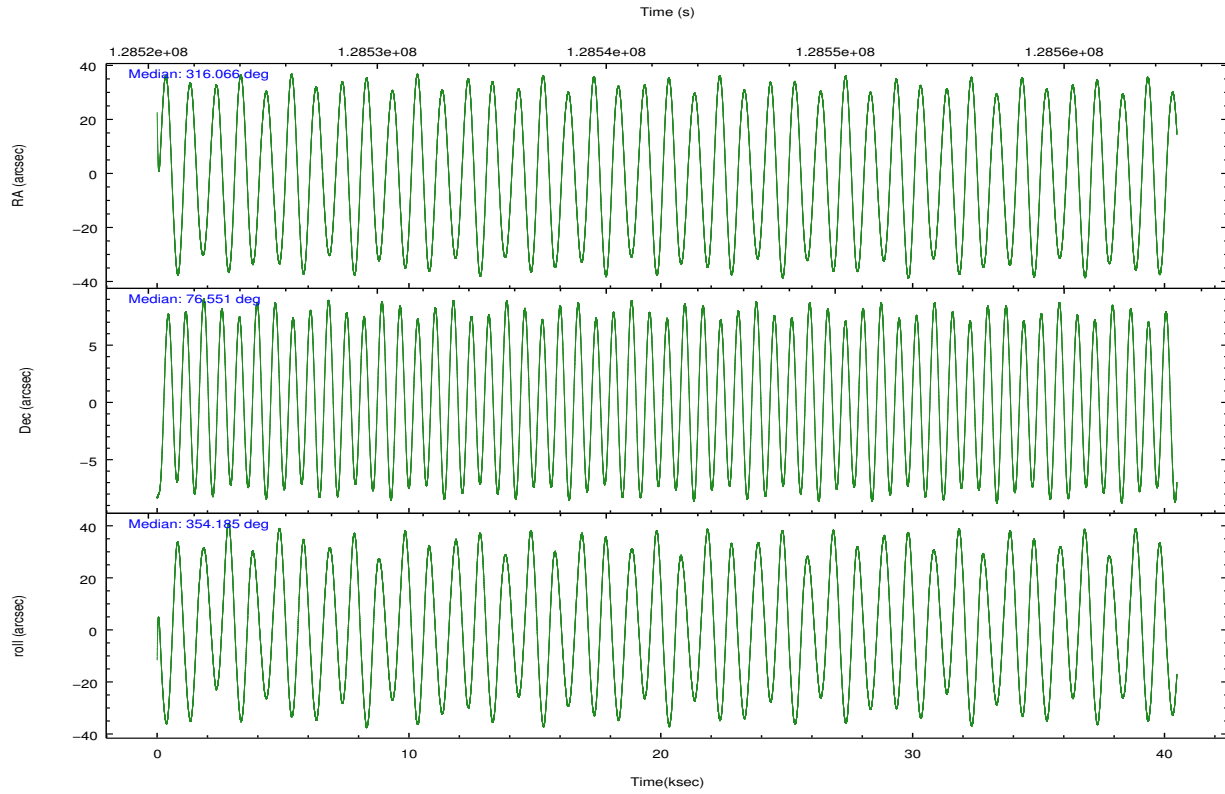
	ccd 2	ccd 3	ccd 5	ccd 6	ccd 7	ccd 8		ccd 2	ccd 3	ccd 5	ccd 6	ccd 7	ccd 8
level 1 events	266510	254596	376565	256917	332626	339723	grade 0 events	12970	12776	22936	12244	12948	25687
rejected events	236030	224713	200995	226326	193556	258936		4%	5%	6%	4%	3%	7%
rejected %	88%	88%	53%	88%	58%	76%	grade 1 events	117	116	1591	117	308	239
								0%	0%	0%	0%	0%	0%
							grade 2 events	6724	6084	50345	6373	27715	16461
								2%	2%	13%	2%	8%	4%
							grade 3 events	2774	2860	7211	2958	12419	9492
								1%	1%	1%	1%	3%	2%
							grade 4 events	2747	2696	6901	2890	12434	8640
								1%	1%	1%	1%	3%	2%
							grade 5 events	9037	10051	27466	10821	31745	14104
								3%	3%	7%	4%	9%	4%
							grade 6 events	5271	5473	88201	6132	73580	20509
								1%	2%	23%	2%	22%	6%
							grade 7 events	226870	214540	171914	215382	161477	244591
								85%	84%	45%	83%	48%	71%

2.2 Compared Parameters

Parameter	Planned	Actual	Parameter	Planned	Actual
Instrument	ACIS	ACIS	Obspar format version number	7	7
Detector	ACIS-235678	ACIS-235678	Obspar file type	PREDICTED	ACTUAL
Grating	NONE	NONE	Obspar update status	NONE	UPDATED
Data mode	FAINT	FAINT	Number of optional ACIS chips dropped	0	0
Observation mode	POINTING	POINTING	On-chip summing requested	N	N
[deg] Pointing RA	315.960601	316.0669021221994	Subarray requested	NONE	NONE
[deg] Pointing Dec	76.539193	76.55064769206751	Alternating exposures requested	N	N
[deg] Pointing Roll	354.135553	354.1888036898425	[s] Primary exposure time	0.000000	3.2
[mm] SIM focus pos	-0.684267	-0.6828225247311905			
[mm] SIM defocus	0	0.001444936568705701			
[mm] SIM translation stage pos	-190.132523	-190.1400660498719			
[mm] SIM translation stage offset	0	0.00754346686406393			
[s] Observation start time (MET)	128522900.184000	128521790.30402			
Observation start date	2002-01-27T12:47:16	2002-01-27T12:29:50			
[s] Observation end time (MET)	128562900.184000	128563375.5807			
Observation end date	2002-01-27T23:53:56	2002-01-28T00:02:55			
Read mode	TIMED	TIMED			

2.3 Aspect





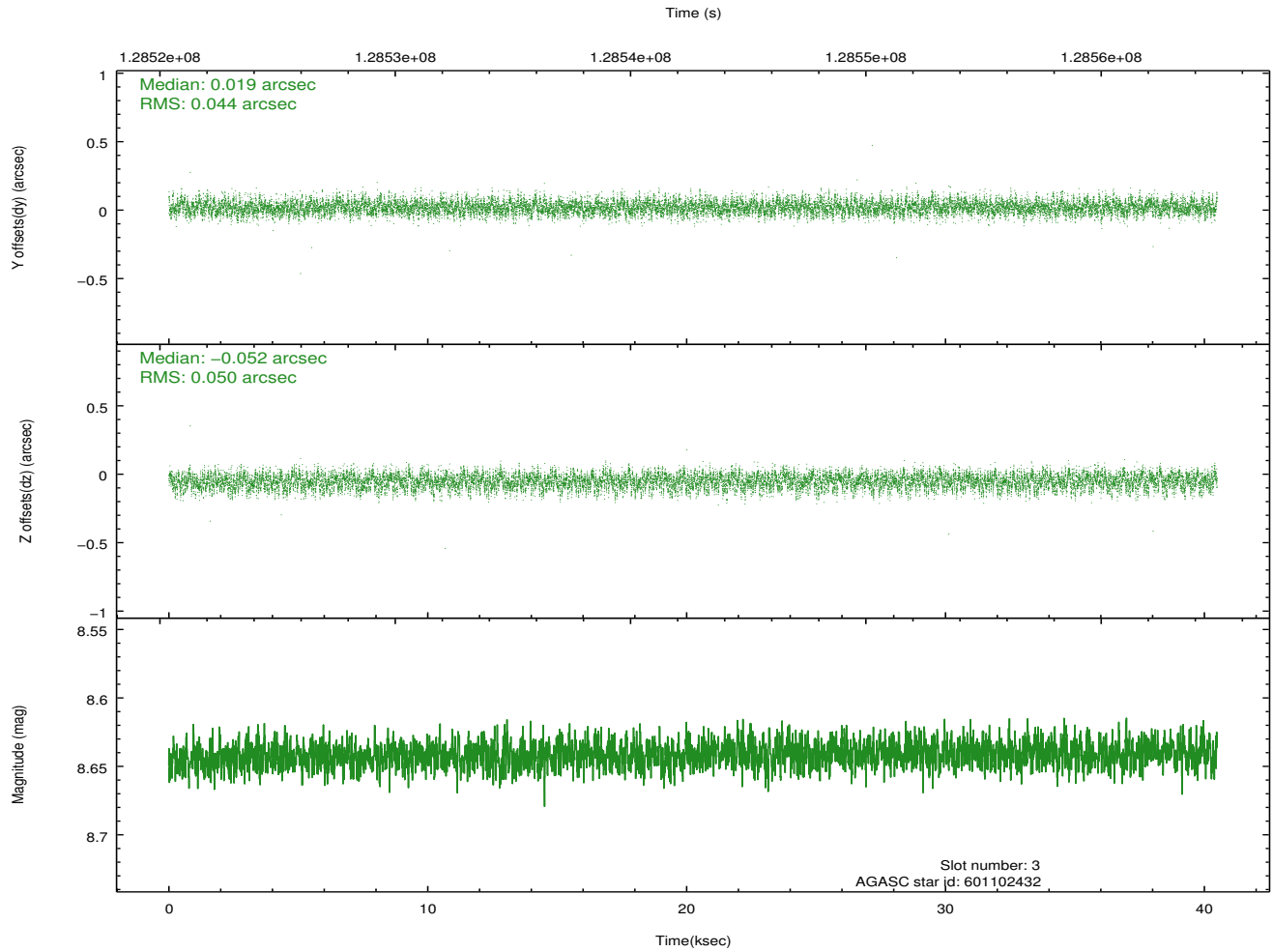
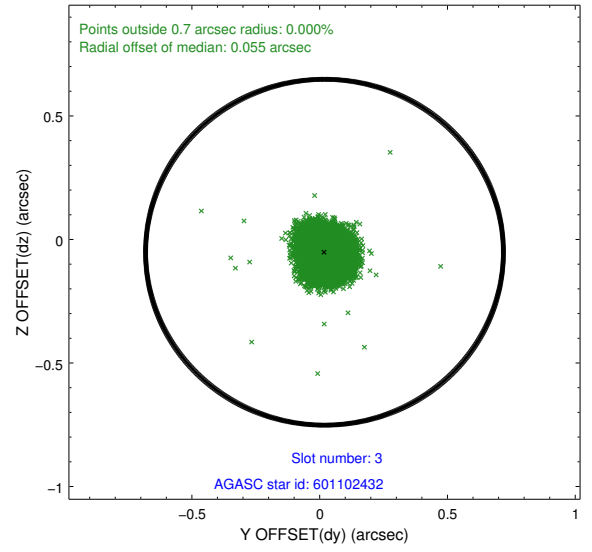
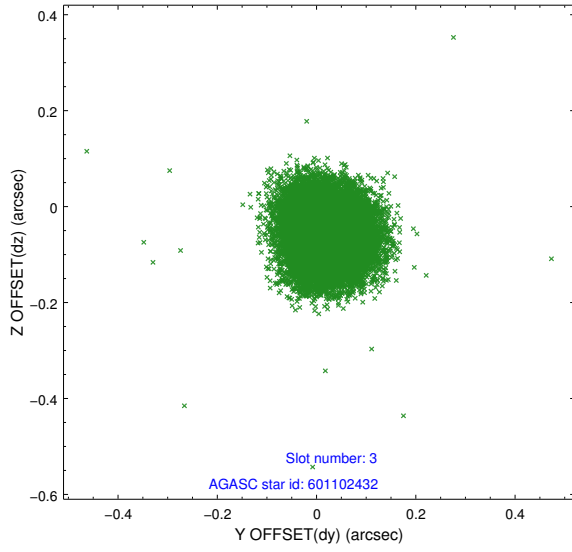
Slot Statistics

slot	status	id	mag	n_pts	med_dy	med_dz	dr1	dr2	ra	dec	mean_y	mean_z
0	FID	ACIS-S-2	7.11	9875	-0.009	-0.002	0.007	0.012	0.000000	0.000000	-755.86	-1728.62
1	FID	ACIS-S-4	7.20	9875	-0.021	0.005	0.006	0.012	0.000000	0.000000	2157.40	179.85
2	FID	ACIS-S-5	7.24	9876	-0.001	0.006	0.007	0.013	0.000000	0.000000	-1808.67	173.54
3	GUIDE	601102432	8.64	19749	0.019	-0.052	0.071	0.113	318.901987	76.543783	2442.83	329.28
4	GUIDE	601101856	8.52	19748	-0.115	0.012	0.072	0.113	316.502521	76.872868	318.24	1241.98
5	GUIDE	601103680	9.40	19740	0.034	-0.013	0.096	0.149	316.505223	76.266441	563.75	-927.28
6	GUIDE	601625784	9.53	19737	0.029	0.036	0.087	0.139	314.737981	77.017917	-1160.27	1623.23
7	GUIDE	601104352	9.64	19738	0.033	0.018	0.085	0.142	317.098616	76.209910	1092.20	-1070.22

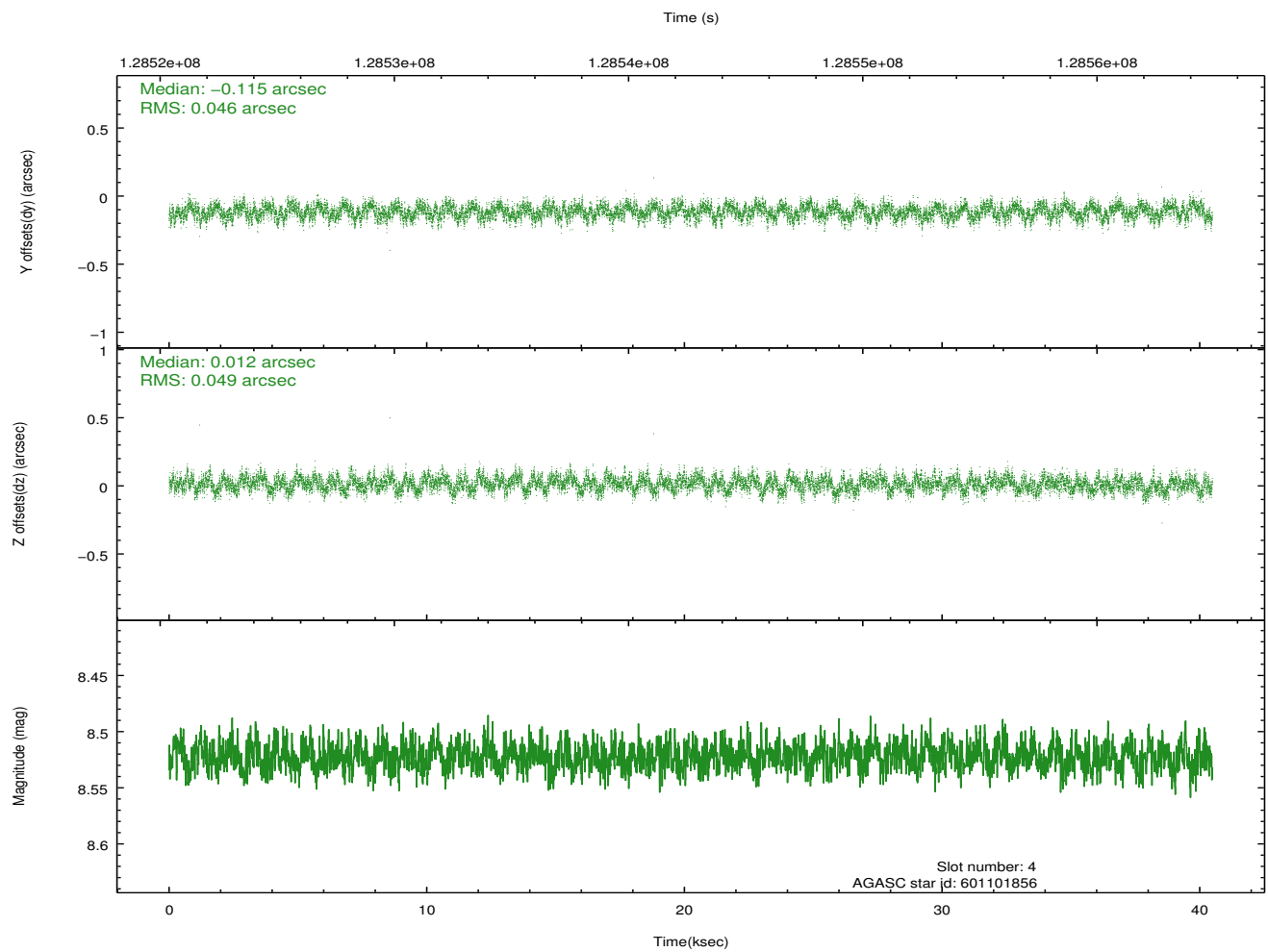
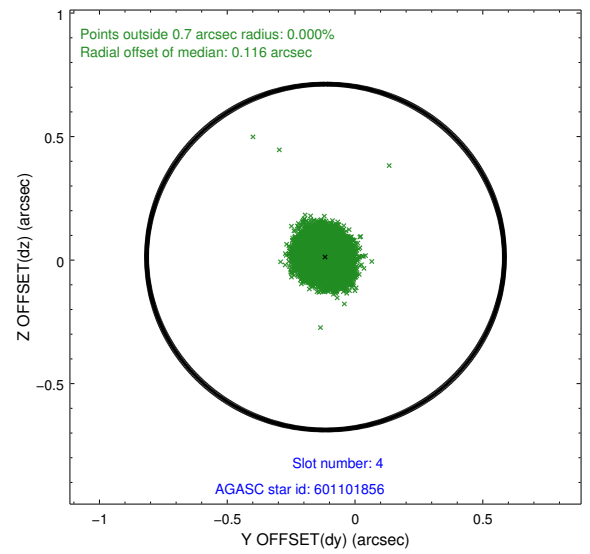
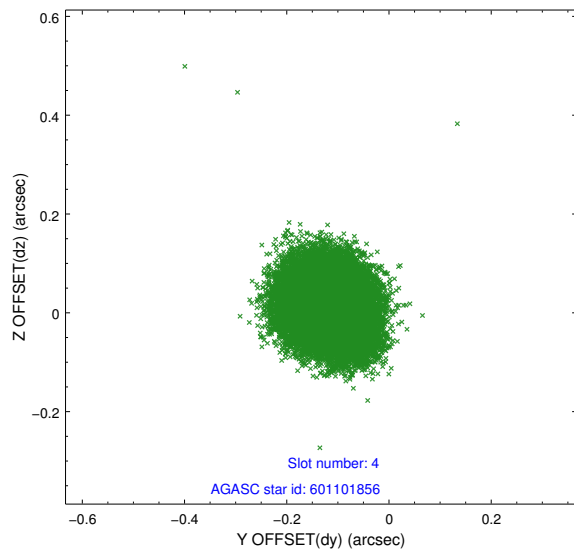
∞

2.4 Star Slots

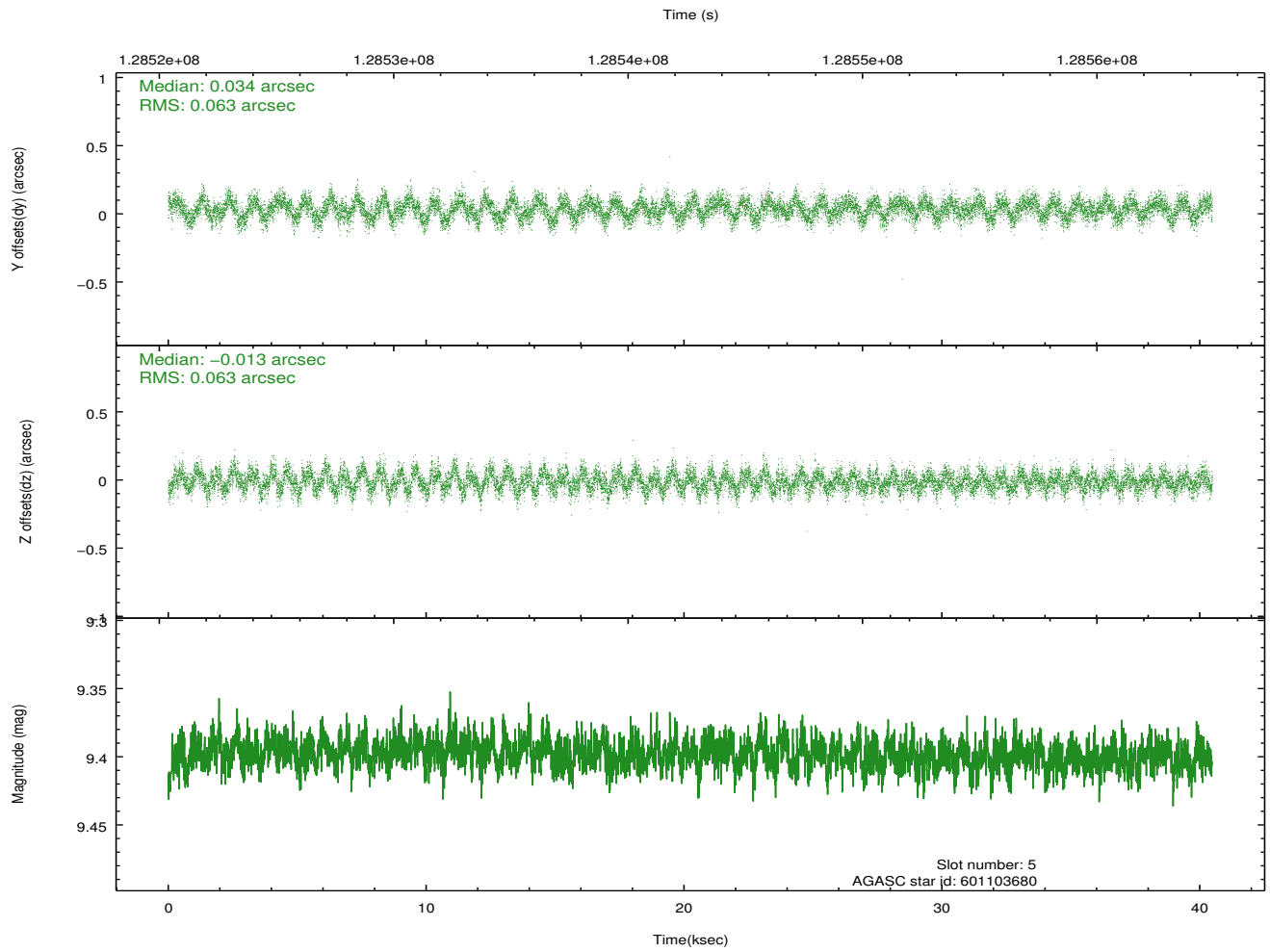
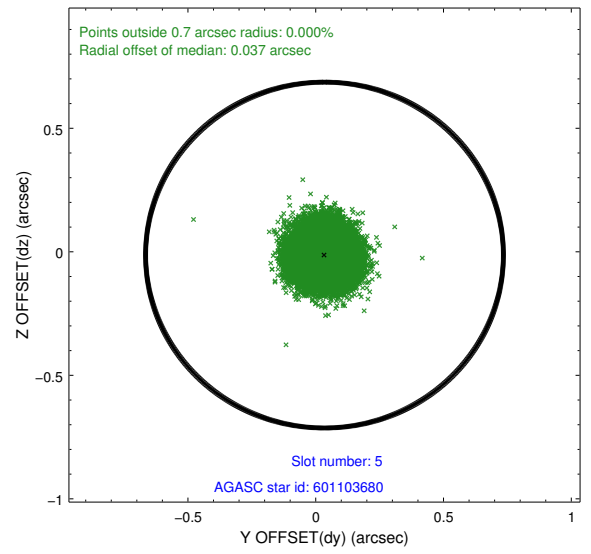
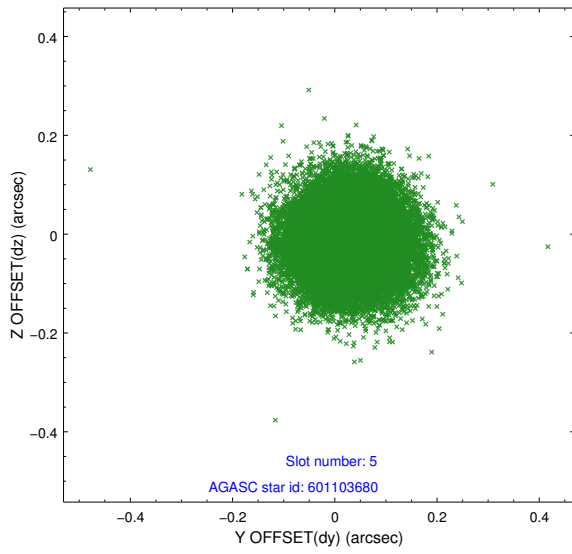
2.4.1 Slot 3



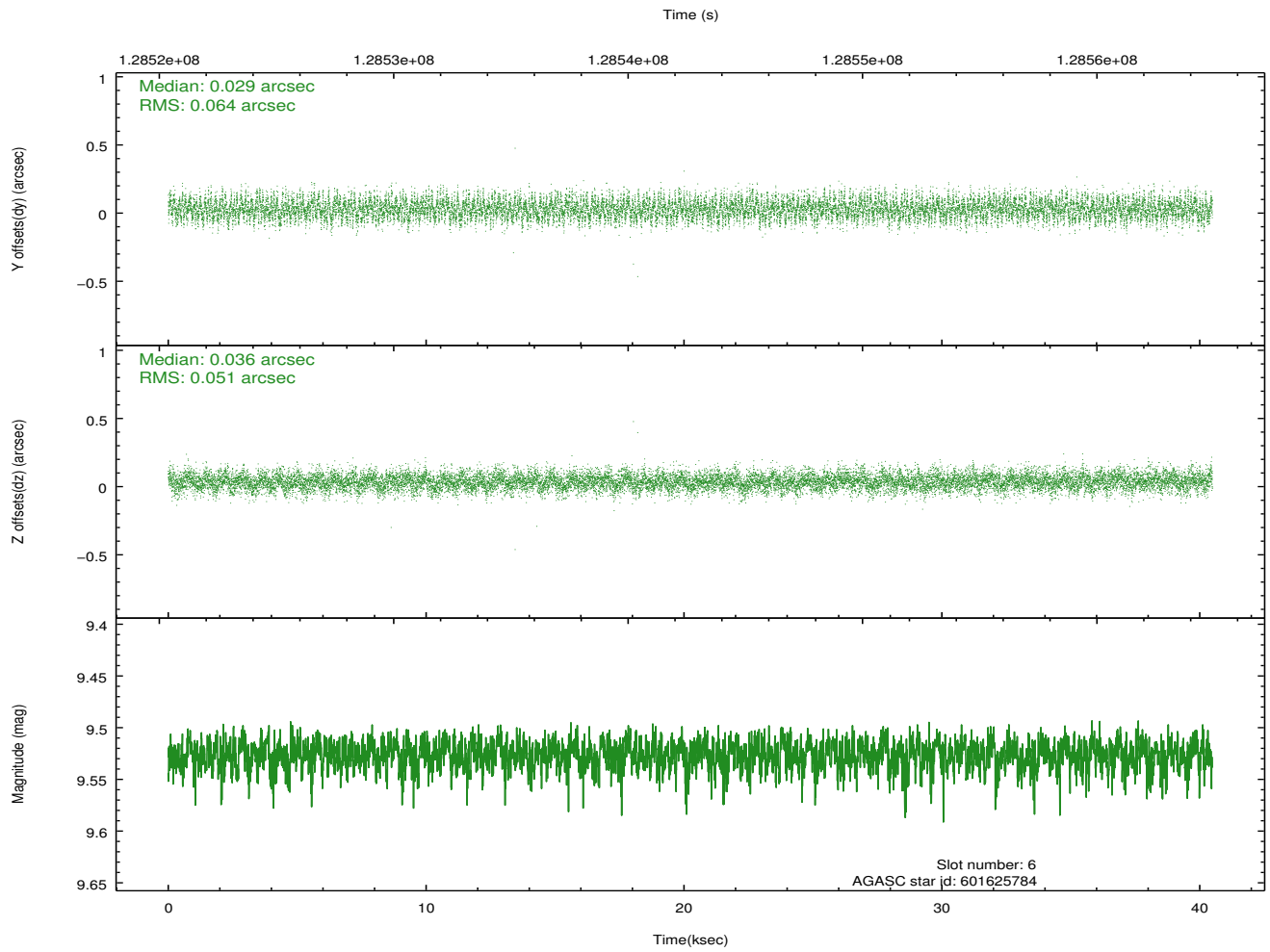
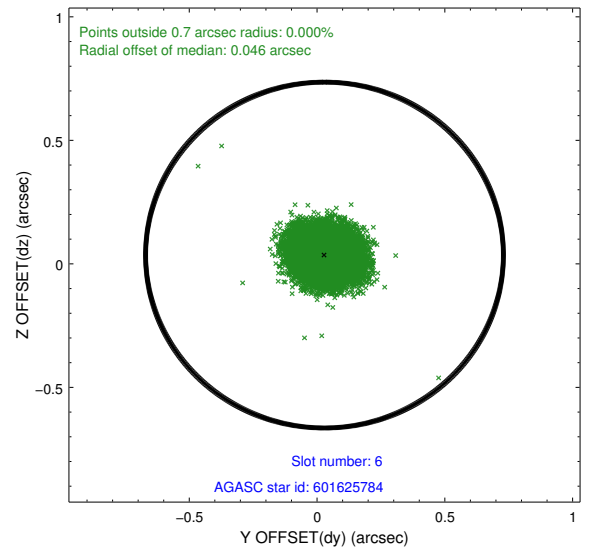
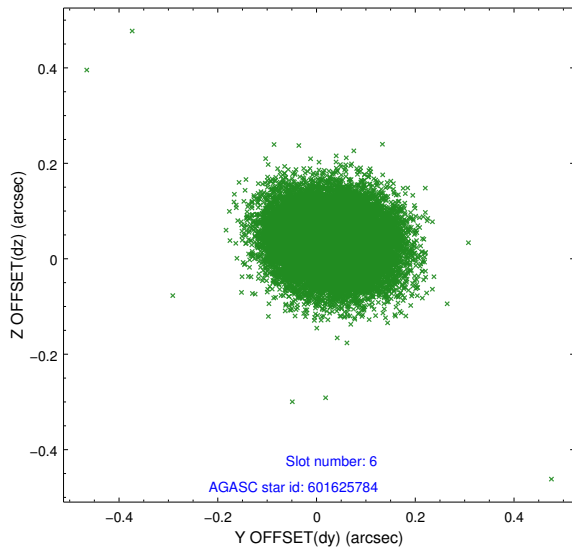
2.4.2 Slot 4



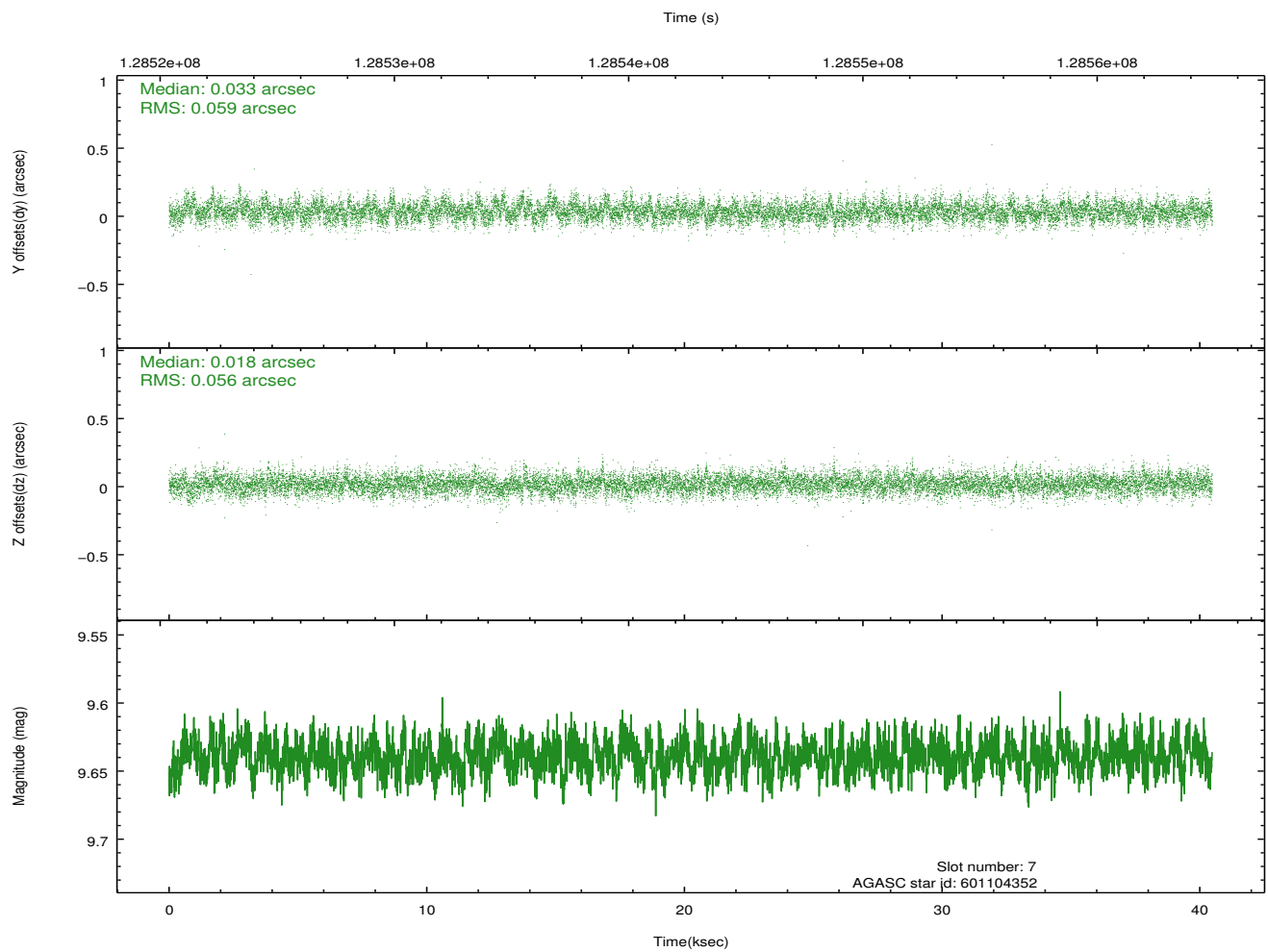
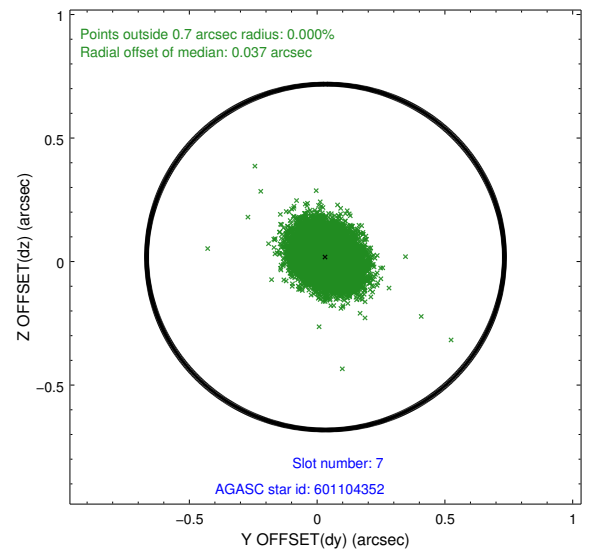
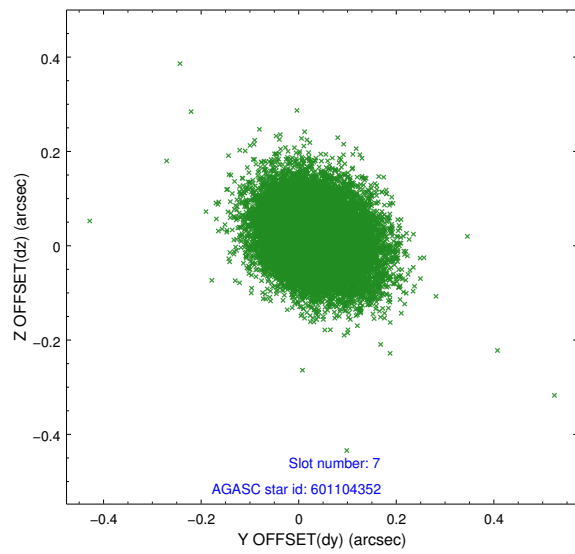
2.4.3 Slot 5



2.4.4 Slot 6

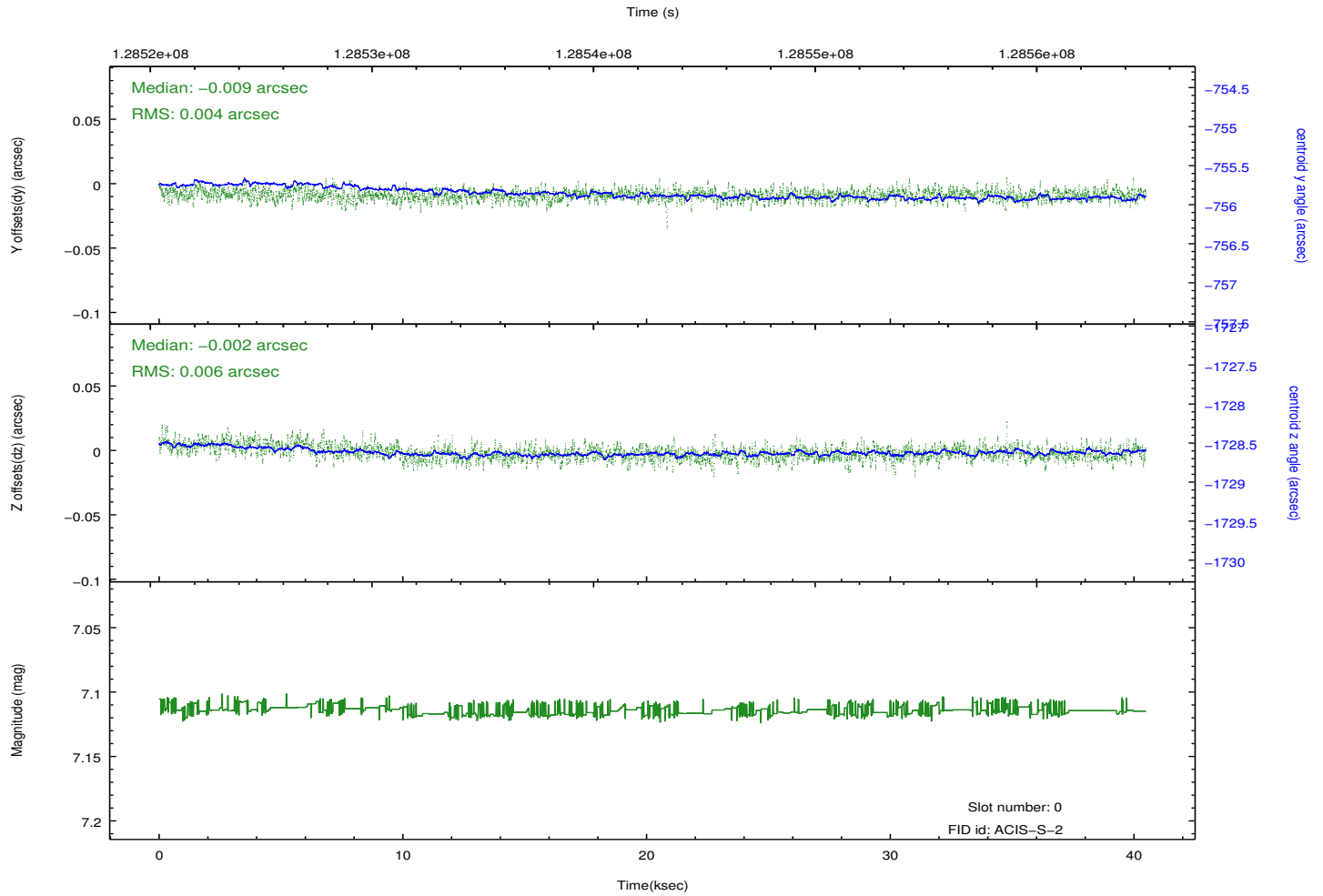
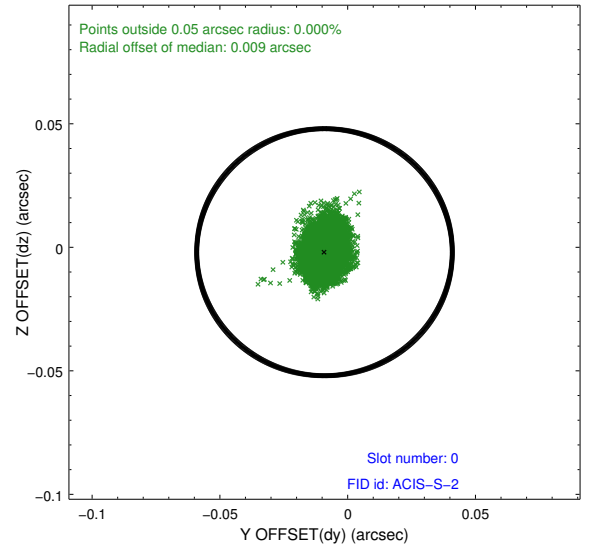
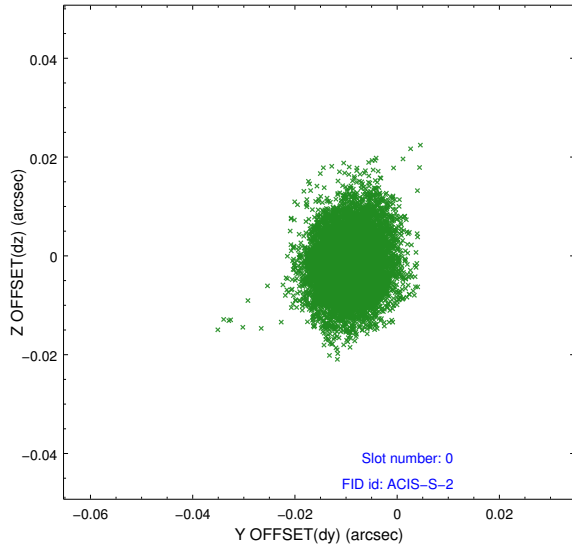


2.4.5 Slot 7

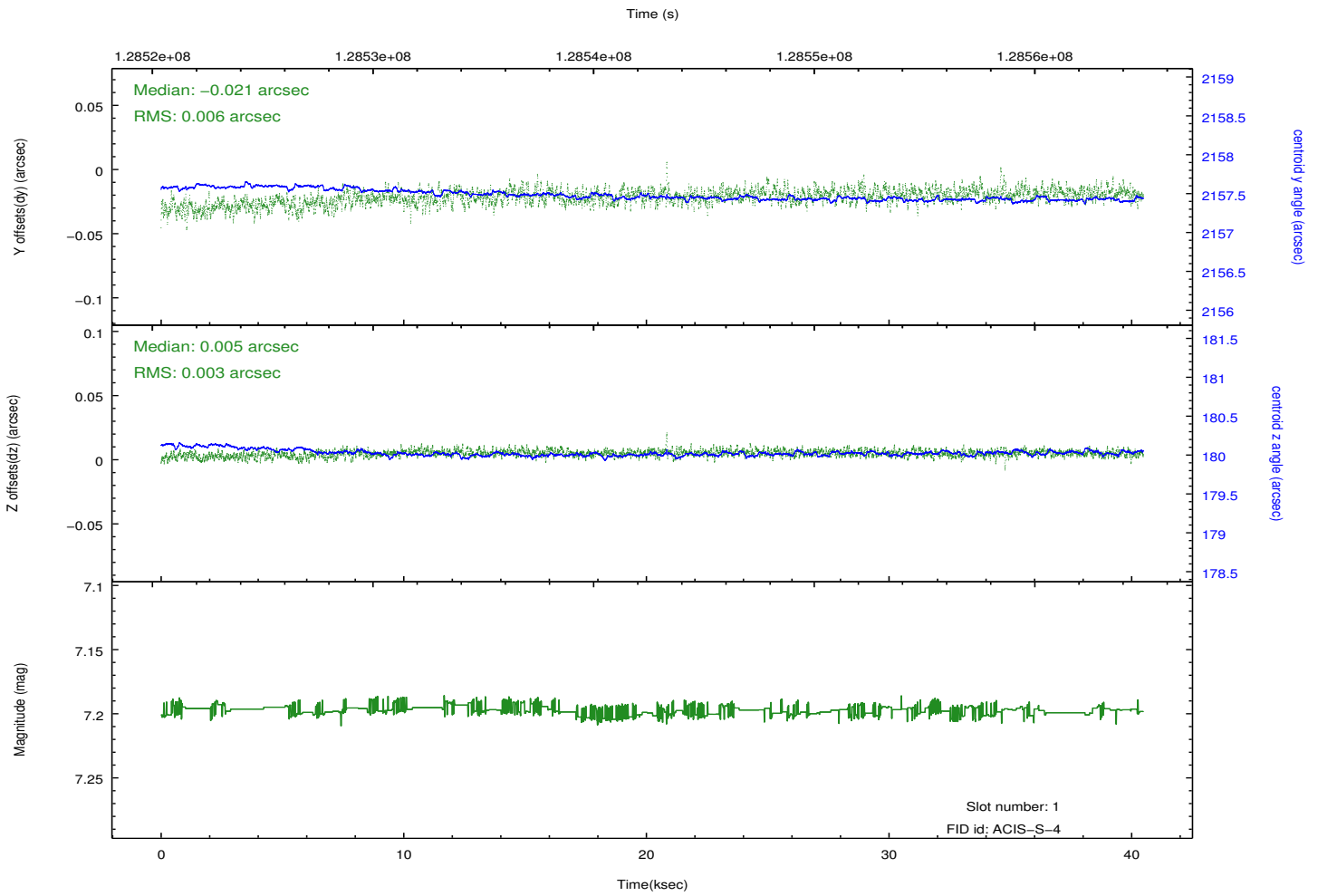
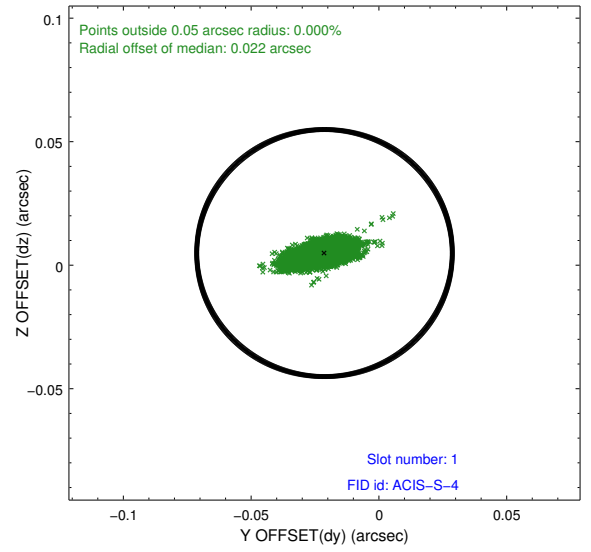
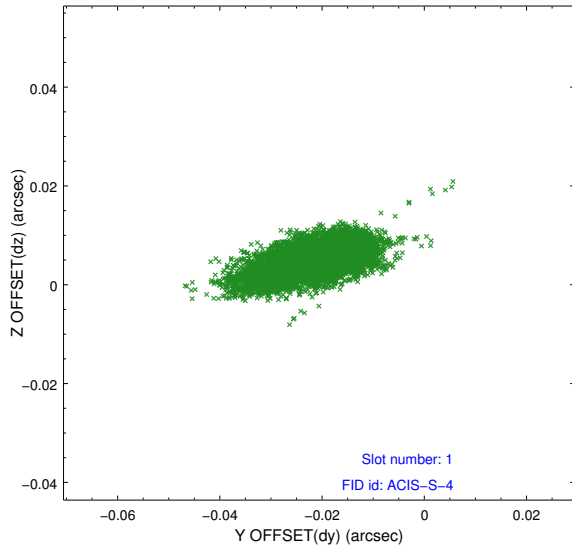


2.5 FID Slots

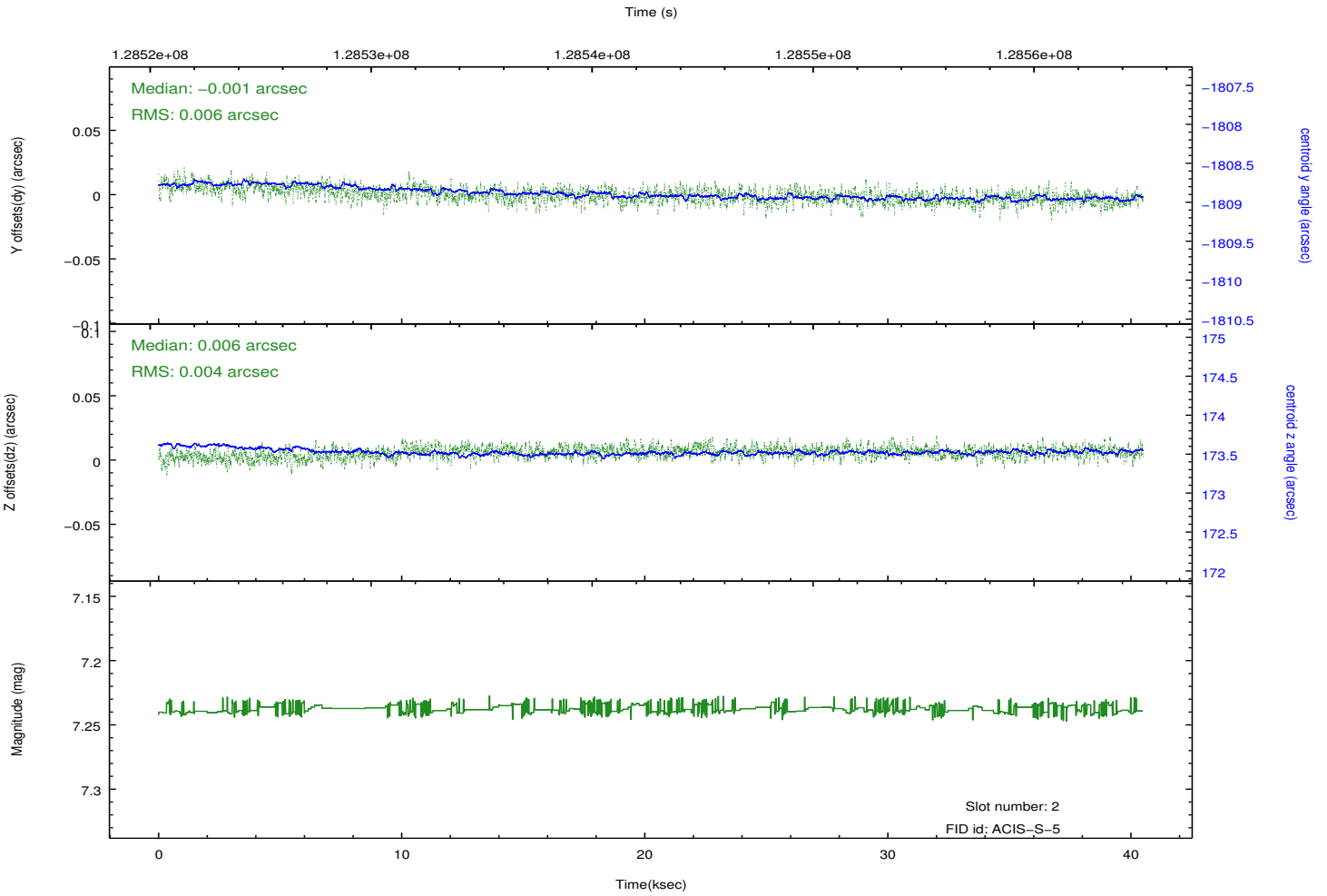
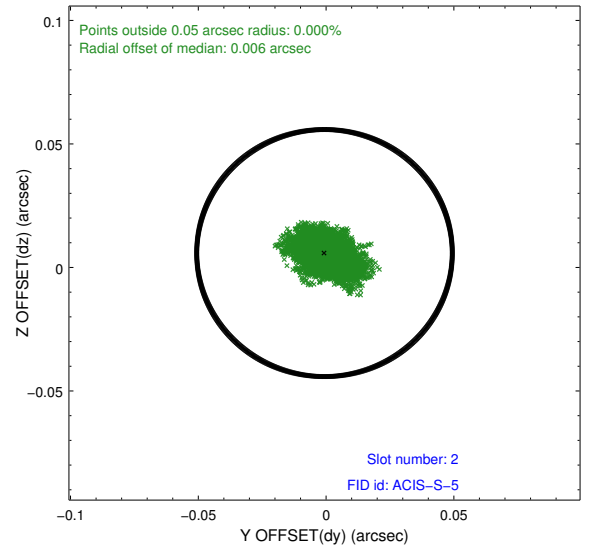
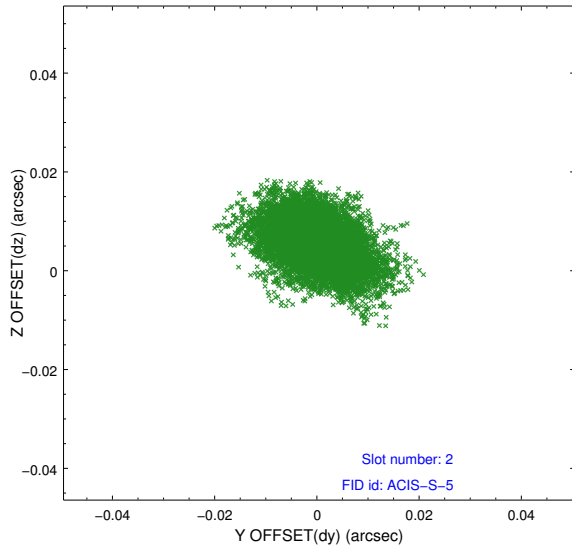
2.5.1 Slot 0



2.5.2 Slot 1



2.5.3 Slot 2



A Summary

A.1 Status

V&V Scientist	Jen Lauer
V&V Date (YYYY-MM-DD)	2012.10.03
V&V Edition	1
V&V Disposition and Status	OK
V&V Charge Time	39.961

A.2 Comments