

V&V Reference Report

L2 ASCDS Version : 8.4.5

Observation 2534 - L2 Version 3
Chandra X-Ray Center

L2 Processing Date : Oct 14 2012

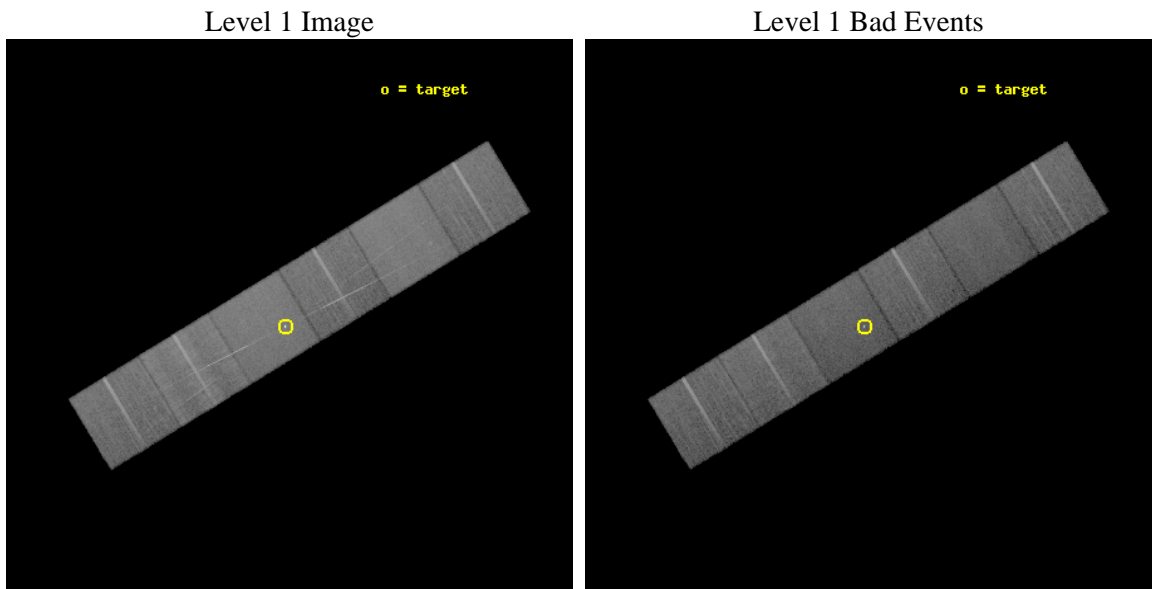
Contents

1	Front	2
2	OBI	3
2.1	OBI	3
2.1.1	Images	3
2.1.2	Bias	3
2.1.3	Parameters	4
2.1.4	Events	4
2.2	Compared Parameters	5
2.3	Aspect	6
2.4	Star Slots	9
2.4.1	Slot 3	9
2.4.2	Slot 4	10
2.4.3	Slot 5	11
2.4.4	Slot 6	12
2.4.5	Slot 7	13
2.5	FID Slots	14
2.5.1	Slot 0	14
2.5.2	Slot 1	15
2.5.3	Slot 2	16
3	Gratings	17
3.1	HEG Arm	17
3.2	MEG Arm	19
A	Summary	21
A.1	Status	21
A.2	Comments	21

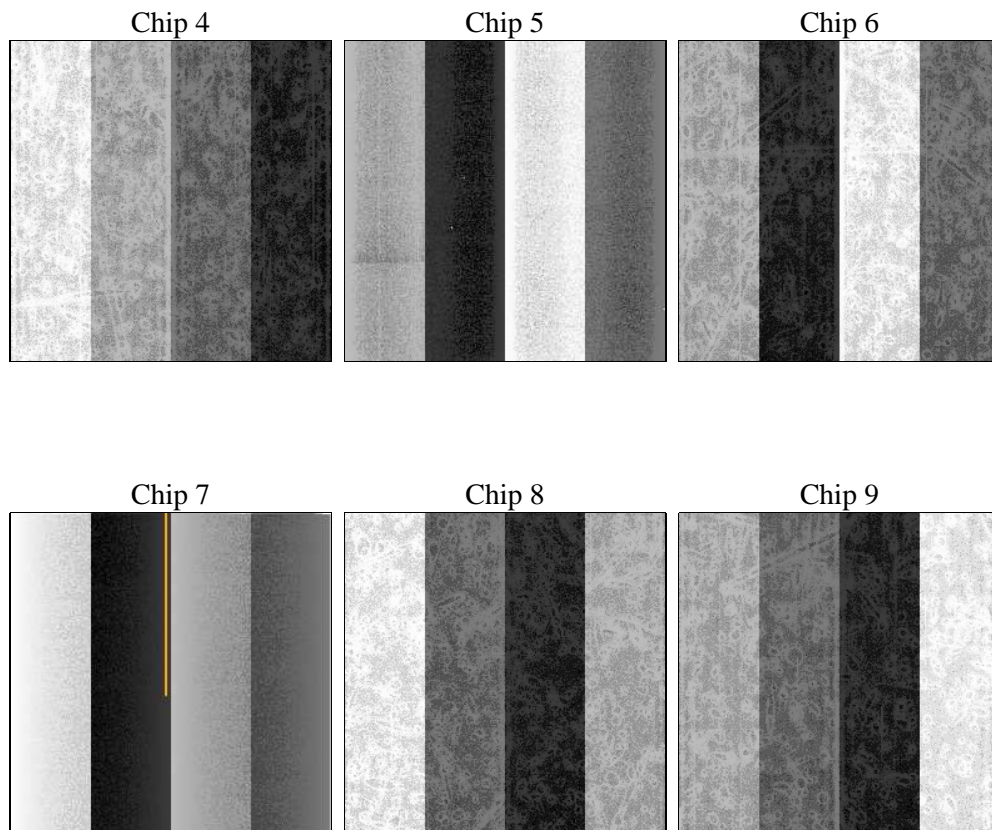
2 OBI

2.1 OBI

2.1.1 Images



2.1.2 Bias



2.1.3 Parameters

obi_num	1	Obi number	sched_exp_time	24300.000000	[s] Scheduled observation exposure time
ascdsver	8.4.5	Processing system revision	ontime	24196.294011384	Sum of GTIs [s]
caldbver	4.5.2	 	ontime4	24202.817061603	Sum of GTIs [s]
date	2012-10-14T00:47:42	Date and time of file creation	ontime5	24193.012140632	Sum of GTIs [s]
revision	3	Processing version of data	ontime6	24205.934891909	Sum of GTIs [s]
			ontime7	24196.294011384	Sum of GTIs [s]
			ontime8	24212.375852257	Sum of GTIs [s]
			ontime9	24209.093782216	Sum of GTIs [s]
			l1events	1142255	Number of level 1 events

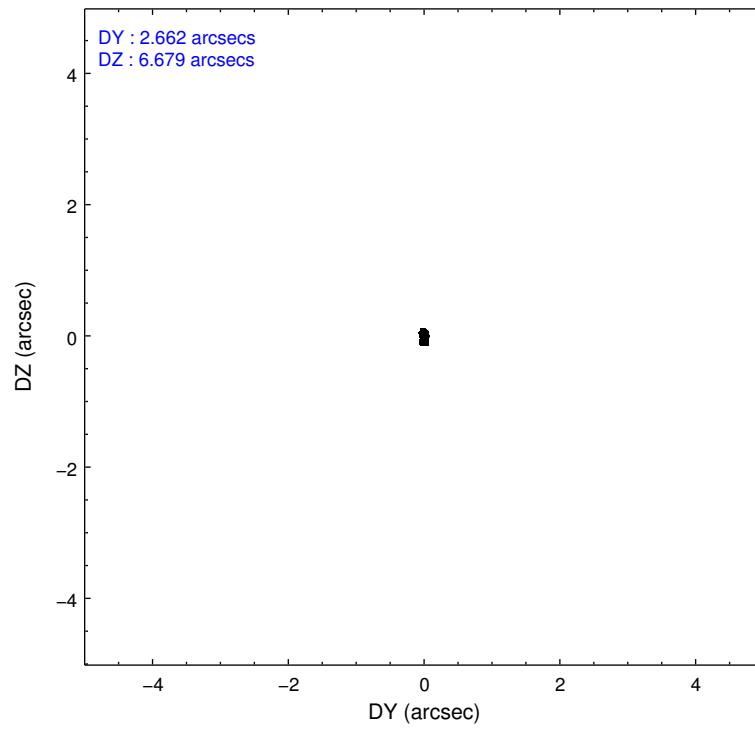
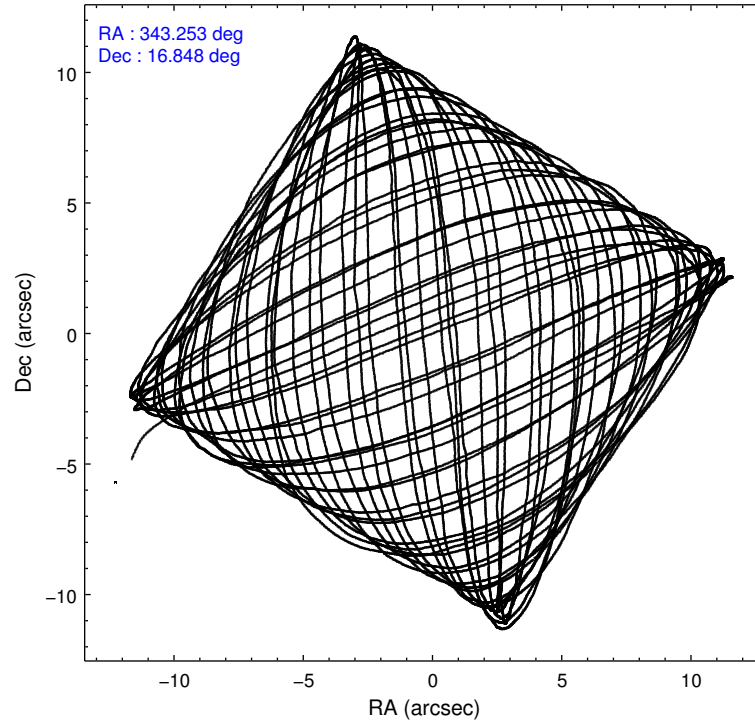
2.1.4 Events

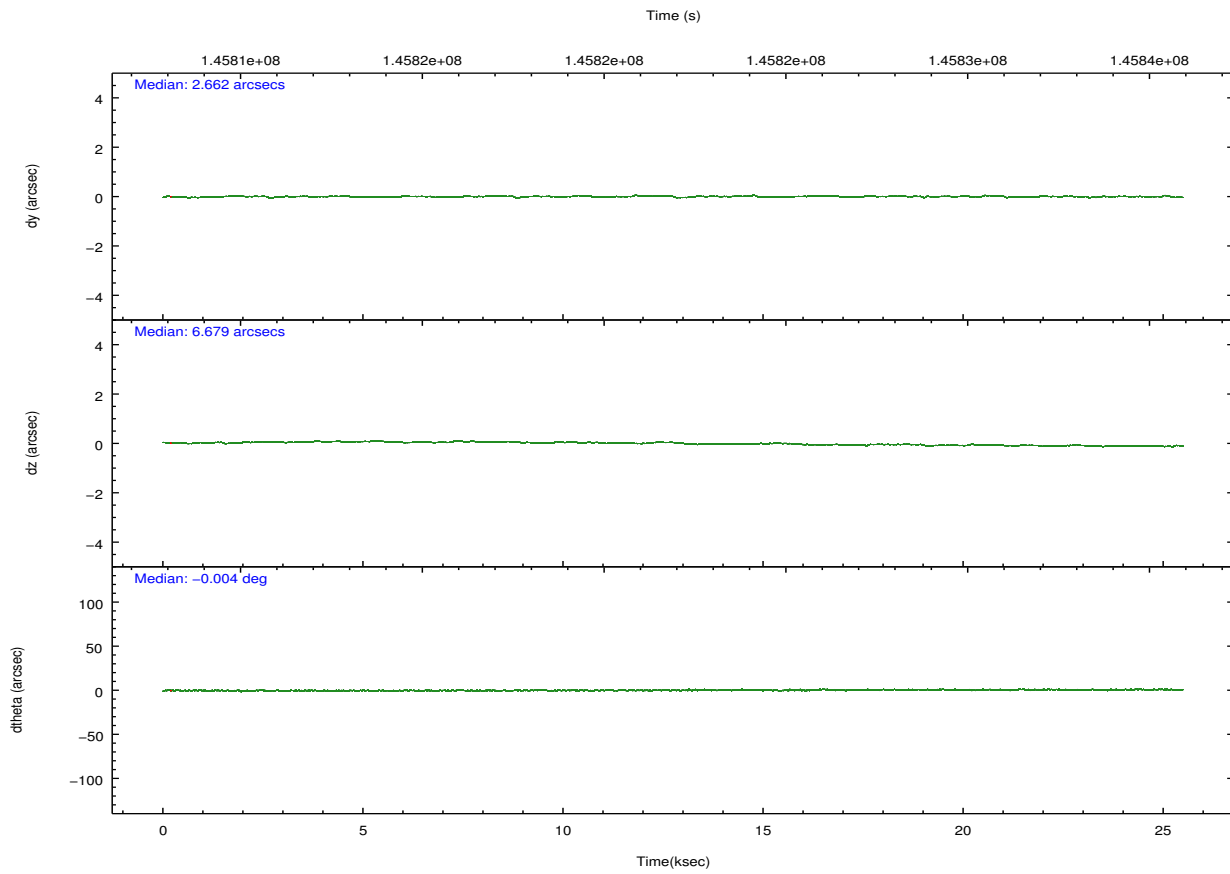
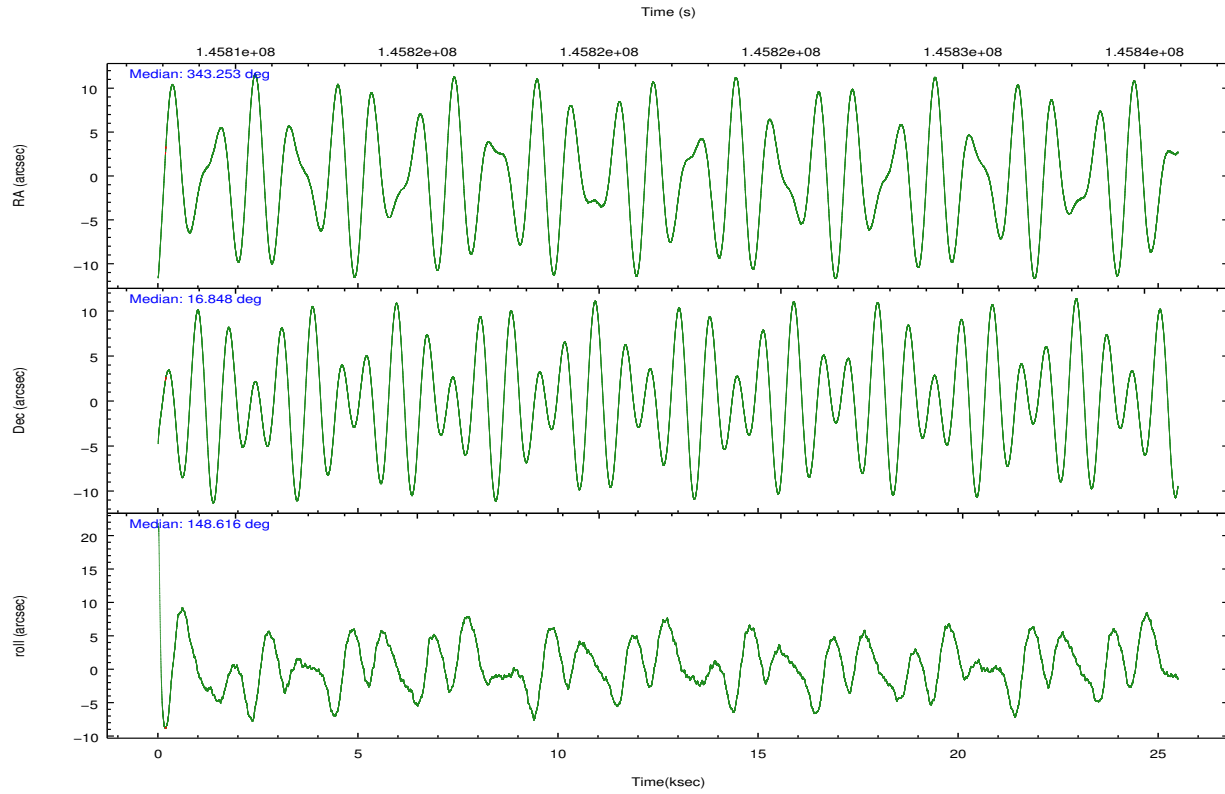
	ccd 4	ccd 5	ccd 6	ccd 7	ccd 8	ccd 9		ccd 4	ccd 5	ccd 6	ccd 7	ccd 8	ccd 9
level 1 events	173878	218945	166898	212650	213588	156296	grade 0 events	8840	6982	12332	9160	19365	8360
rejected events	154044	121176	142255	121921	158487	136656		5%	3%	7%	4%	9%	5%
rejected %	88%	55%	85%	57%	74%	87%	grade 1 events	164	264	83	317	167	121
								0%	0%	0%	0%	0%	0%
							grade 2 events	4151	29448	4486	18059	10747	3835
								2%	13%	2%	8%	5%	2%
							grade 3 events	1953	4120	1986	8318	6151	1918
								1%	1%	1%	3%	2%	1%
							grade 4 events	1922	4085	1964	8150	5629	1888
								1%	1%	1%	3%	2%	1%
							grade 5 events	6518	16240	6756	19871	9083	7300
								3%	7%	4%	9%	4%	4%
							grade 6 events	2973	53181	3878	47075	13213	3642
								1%	24%	2%	22%	6%	2%
							grade 7 events	147357	104625	135413	101700	149233	129232
								84%	47%	81%	47%	69%	82%

2.2 Compared Parameters

Parameter	Planned	Actual	Parameter	Planned	Actual
Instrument	ACIS	ACIS	Obspar format version number	7	7
Detector	ACIS-456789	ACIS-456789	Obspar file type	PREDICTED	ACTUAL
Grating	HETG	HETG	Obspar update status	NONE	UPDATED
Data mode	FAINT	FAINT	Number of optional ACIS chips dropped	0	0
Observation mode	POINTING	POINTING	On-chip summing requested	N	N
[deg] Pointing RA	343.280465	343.2520098354497	Subarray requested	NONE	NONE
[deg] Pointing Dec	16.847316	16.84760562490624	Alternating exposures requested	N	N
[deg] Pointing Roll	148.463268	148.6281532075845	[s] Primary exposure time	0.000000	3.2
[mm] SIM focus pos	-0.684267	-0.6828225247311905			
[mm] SIM defocus	0	0.001444936568705701			
[mm] SIM translation stage pos	-187.132523	-187.1228876879999			
[mm] SIM translation stage offset	-3	-3.009634895007935			
[s] Observation start time (MET)	145810347.184000	145808886.48343			
Observation start date	2002-08-15T14:51:23	2002-08-15T14:28:06			
[s] Observation end time (MET)	145834647.184000	145834921.4845			
Observation end date	2002-08-15T21:36:23	2002-08-15T21:42:01			
Read mode	TIMED	TIMED			

2.3 Aspect



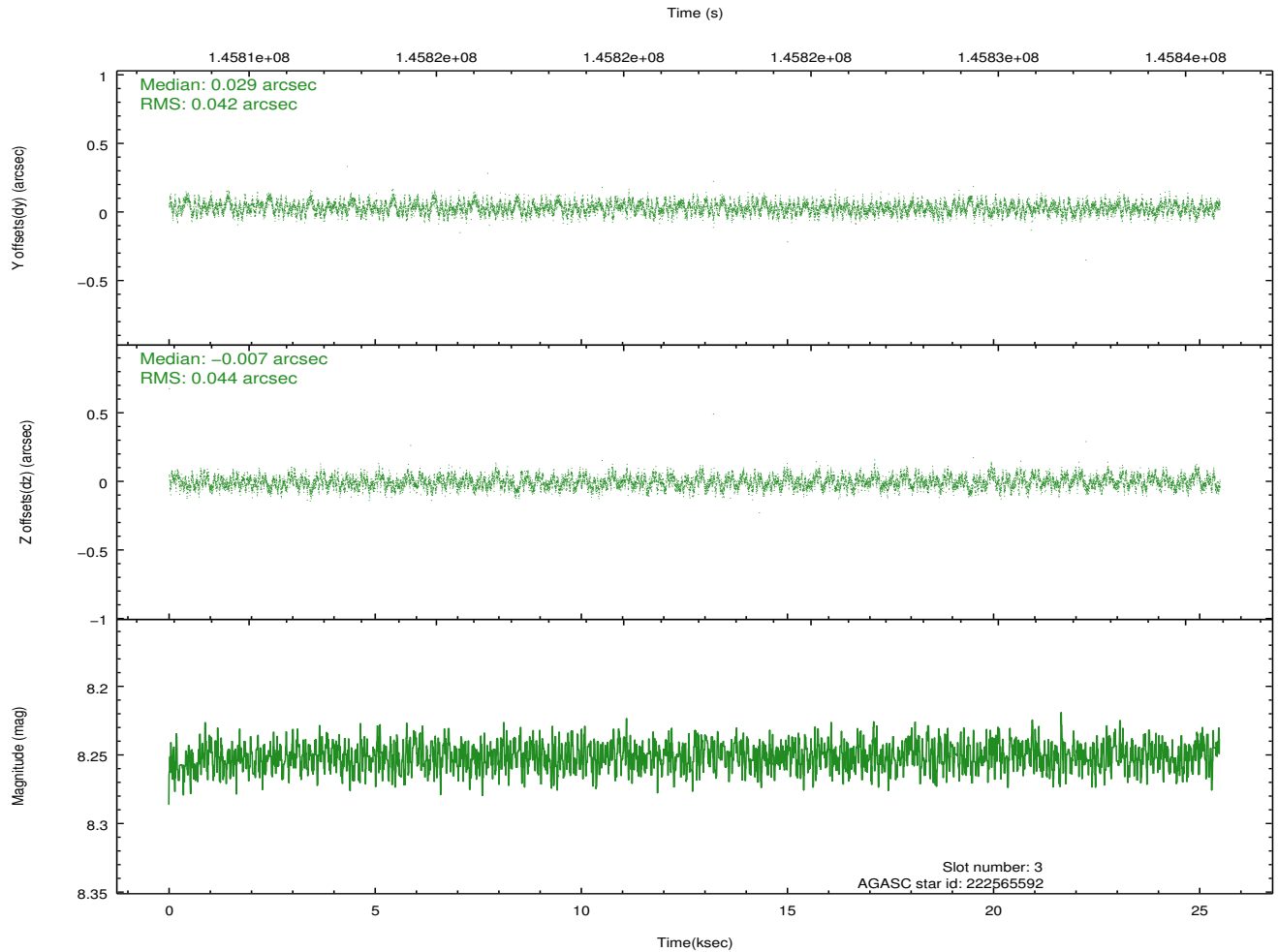
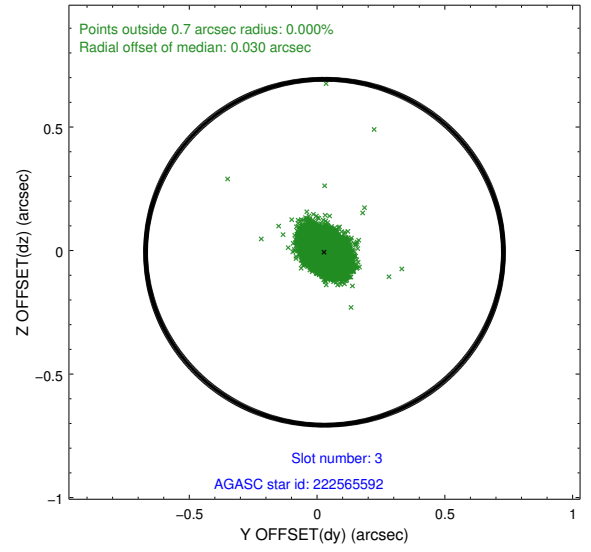
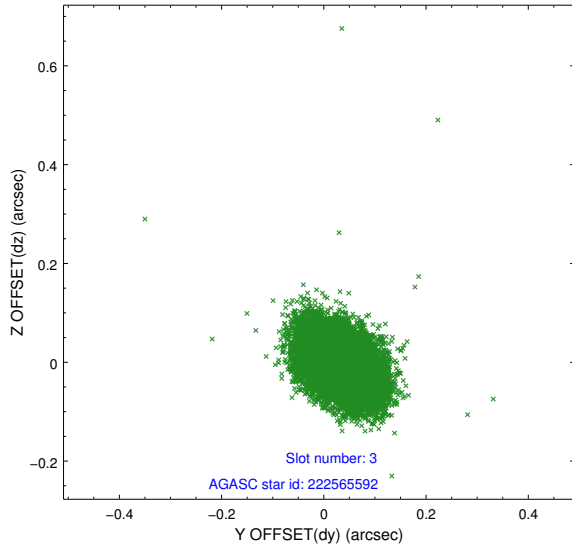


Slot Statistics

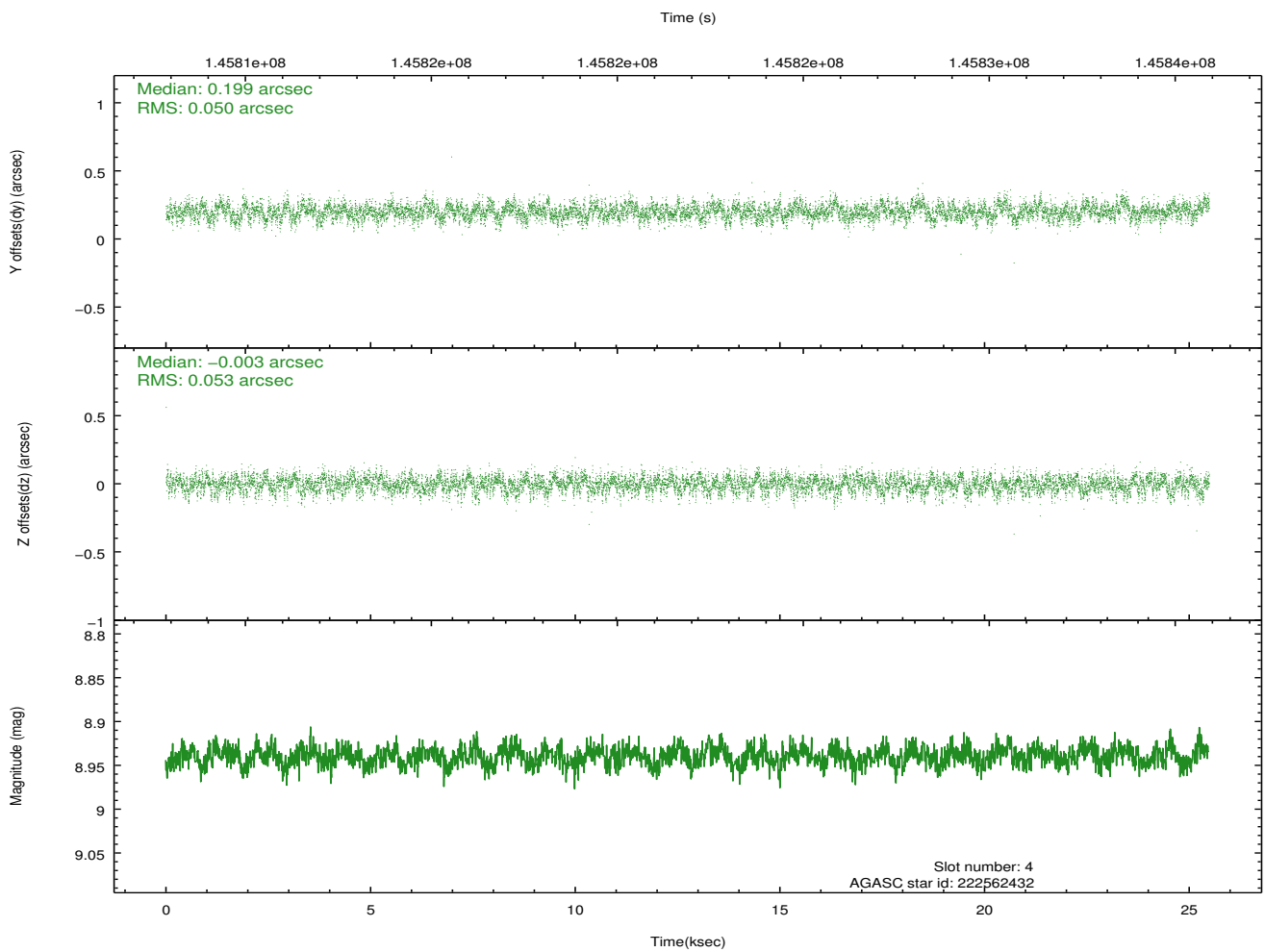
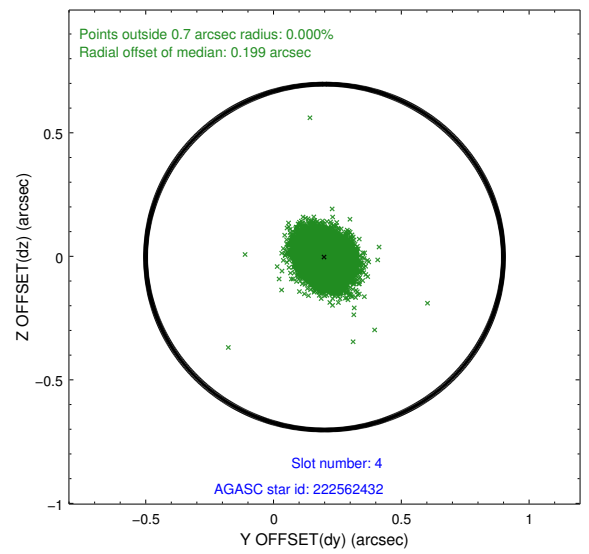
slot	status	id	mag	n_pts	med_dy	med_dz	dr1	dr2	ra	dec	mean_y	mean_z
0	FID	ACIS-S-2	7.10	6166	-0.037	-0.050	0.007	0.011	0.000000	0.000000	-755.11	-1790.02
1	FID	ACIS-S-4	7.20	6150	-0.002	0.031	0.006	0.010	0.000000	0.000000	2158.14	118.43
2	FID	ACIS-S-5	7.23	6157	0.008	0.027	0.007	0.011	0.000000	0.000000	-1807.77	112.21
3	GUIDE	222565592	8.25	12350	0.029	-0.007	0.064	0.102	343.291662	16.508291	-669.89	1020.59
4	GUIDE	222562432	8.94	12358	0.199	-0.003	0.077	0.124	343.698150	16.309399	-2240.75	894.53
5	GUIDE	222563736	8.82	12344	-0.011	-0.195	0.074	0.118	343.076284	16.308502	-412.38	2022.01
6	GUIDE	223089808	9.09	12348	-0.161	0.215	0.083	0.135	343.220223	17.508272	1422.28	-1918.93
7	GUIDE	222571232	9.55	12342	-0.060	-0.011	0.089	0.149	343.021766	16.540282	184.45	1408.93

2.4 Star Slots

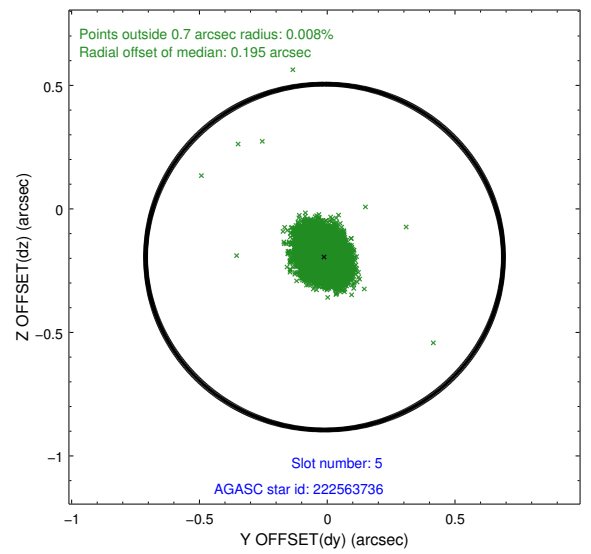
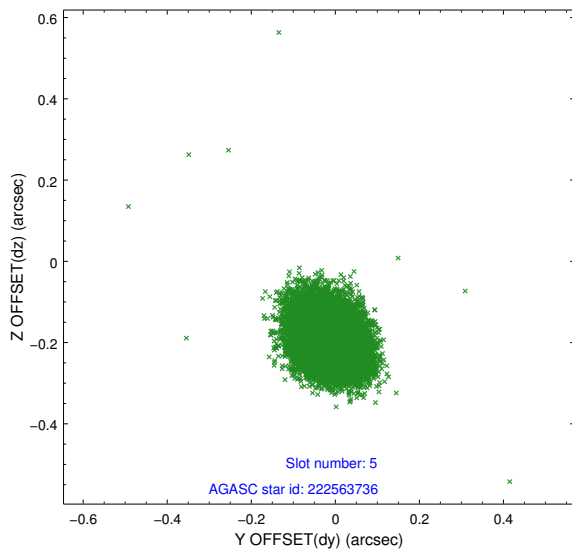
2.4.1 Slot 3



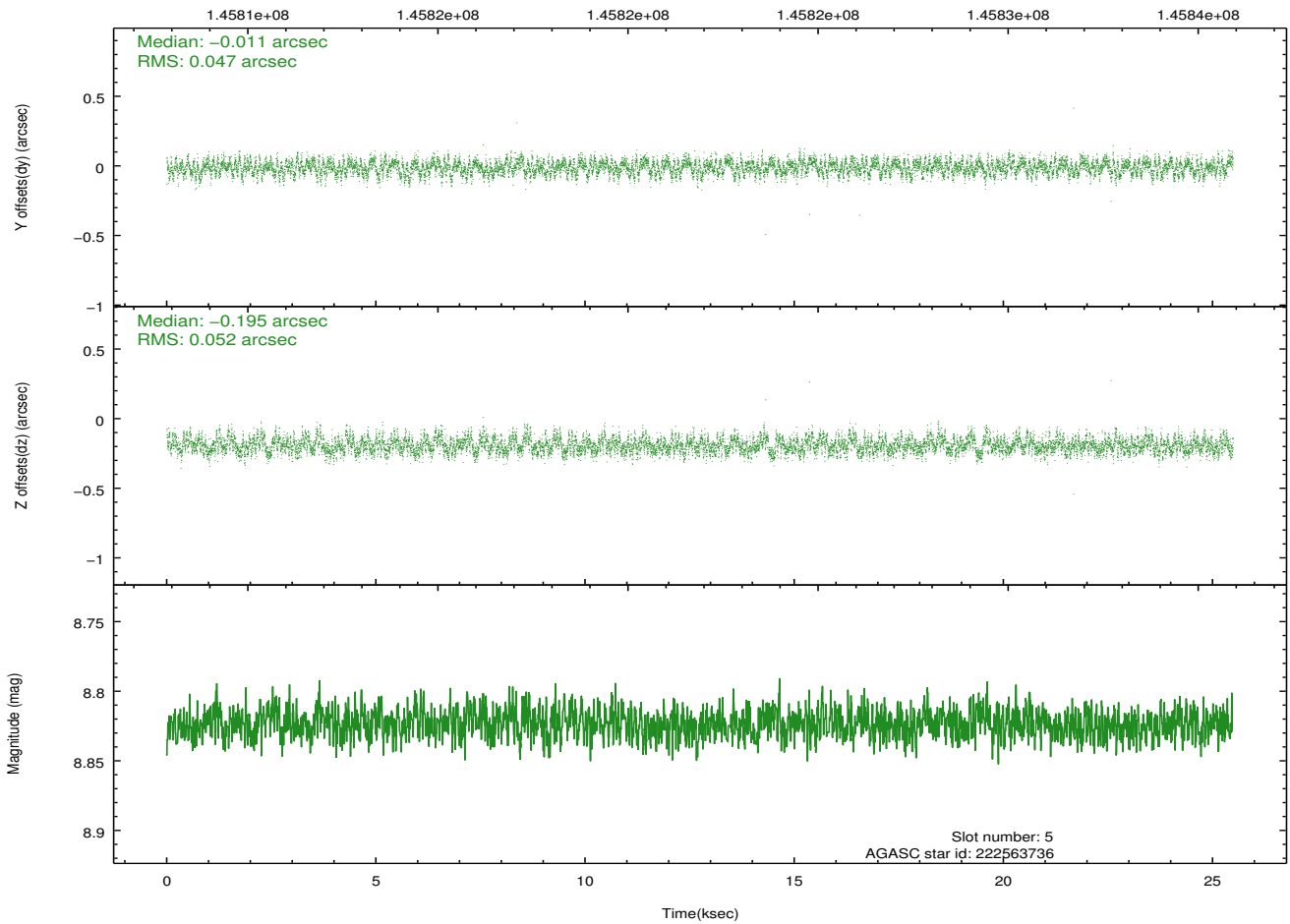
2.4.2 Slot 4



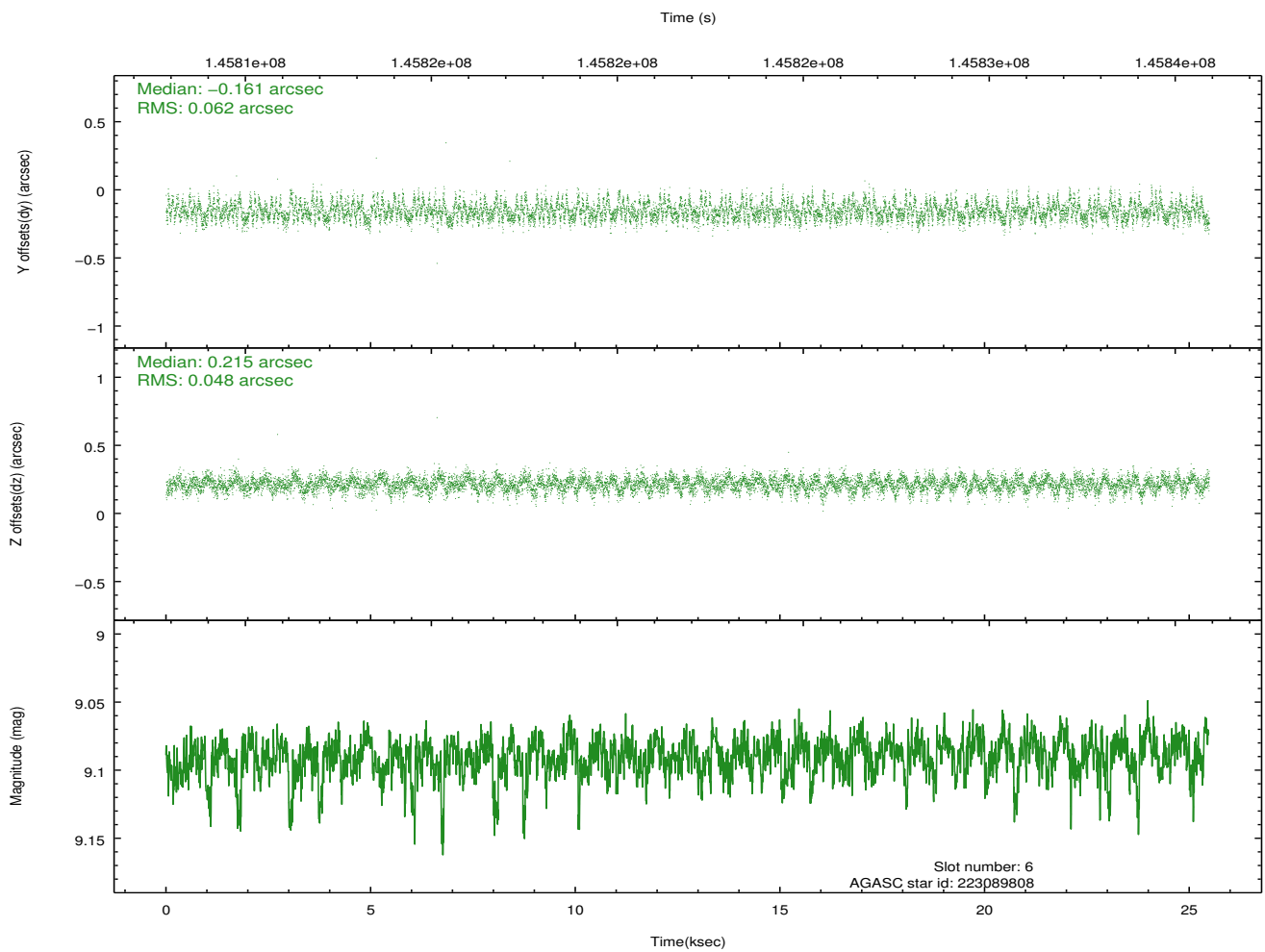
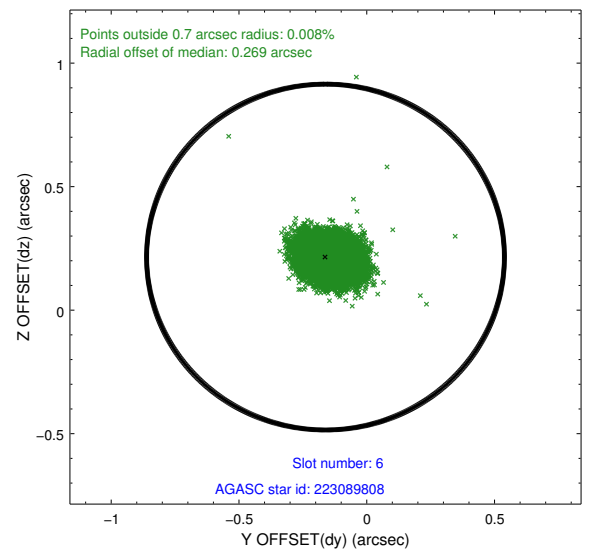
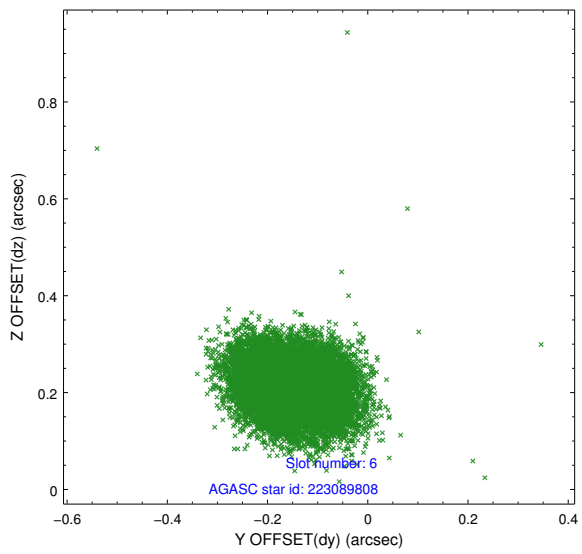
2.4.3 Slot 5



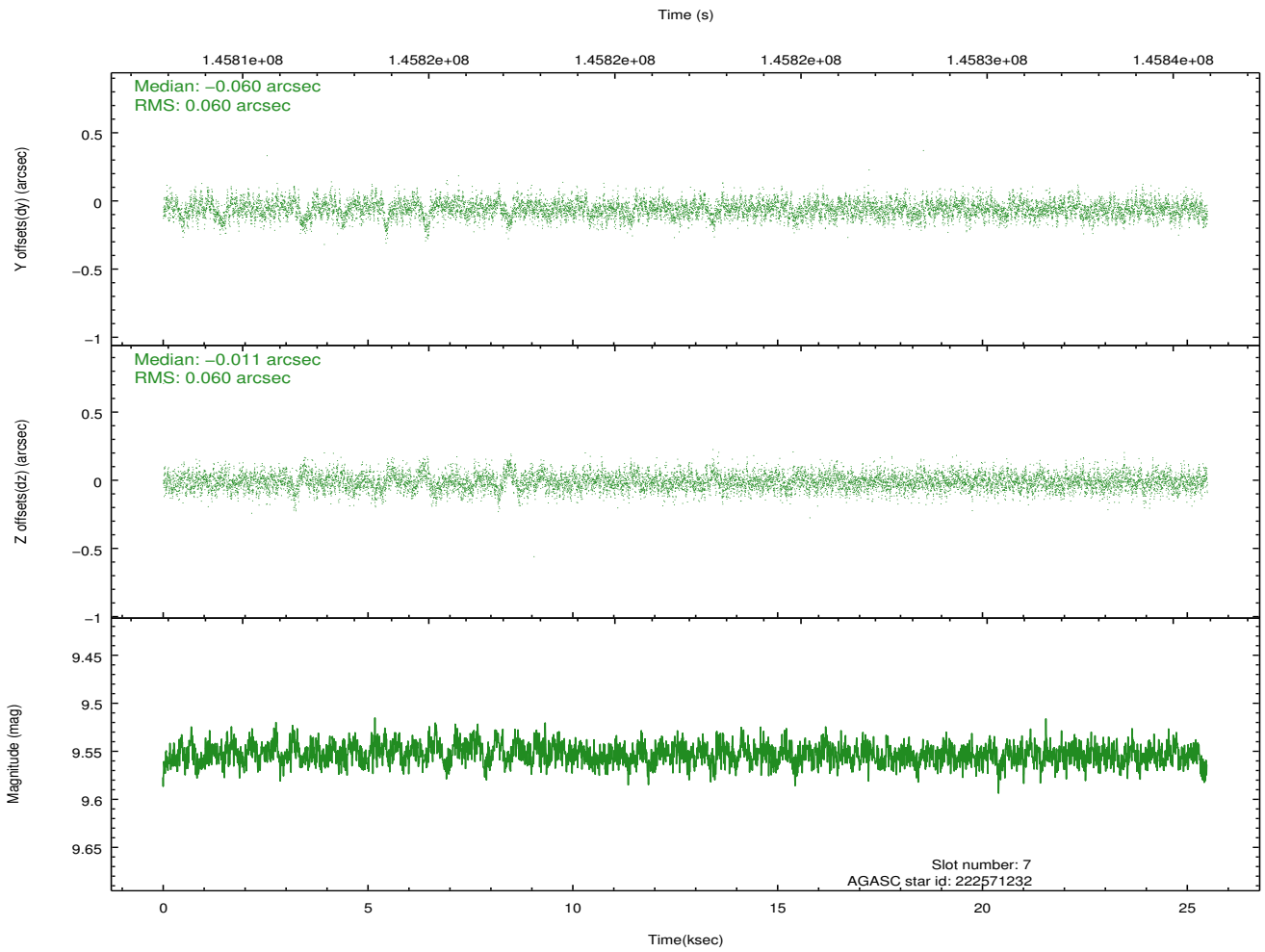
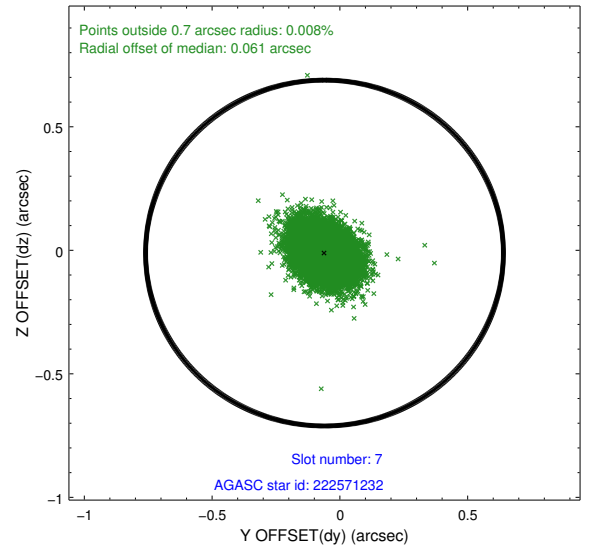
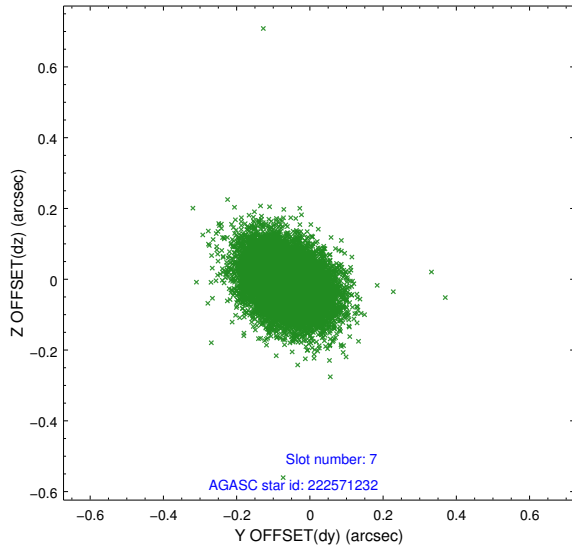
Time (s)



2.4.4 Slot 6

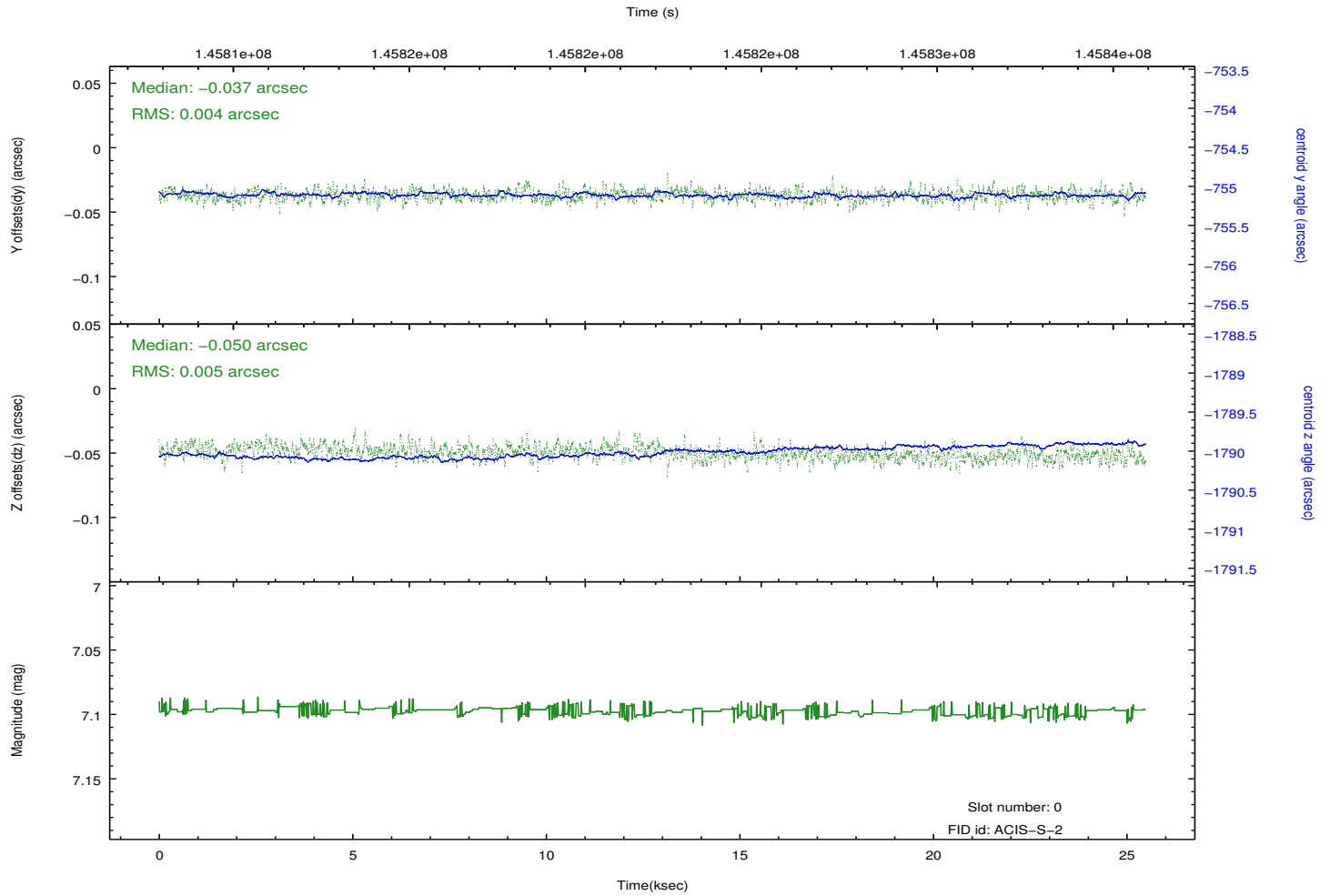
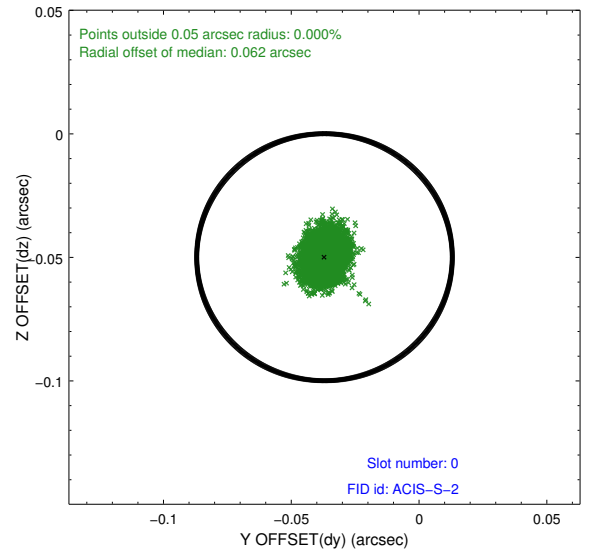
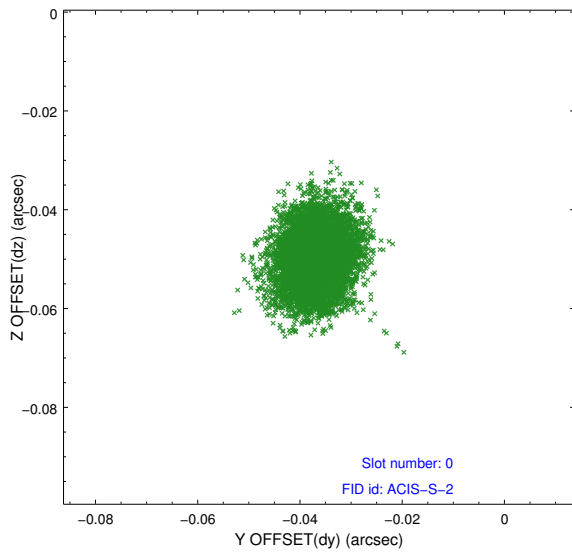


2.4.5 Slot 7

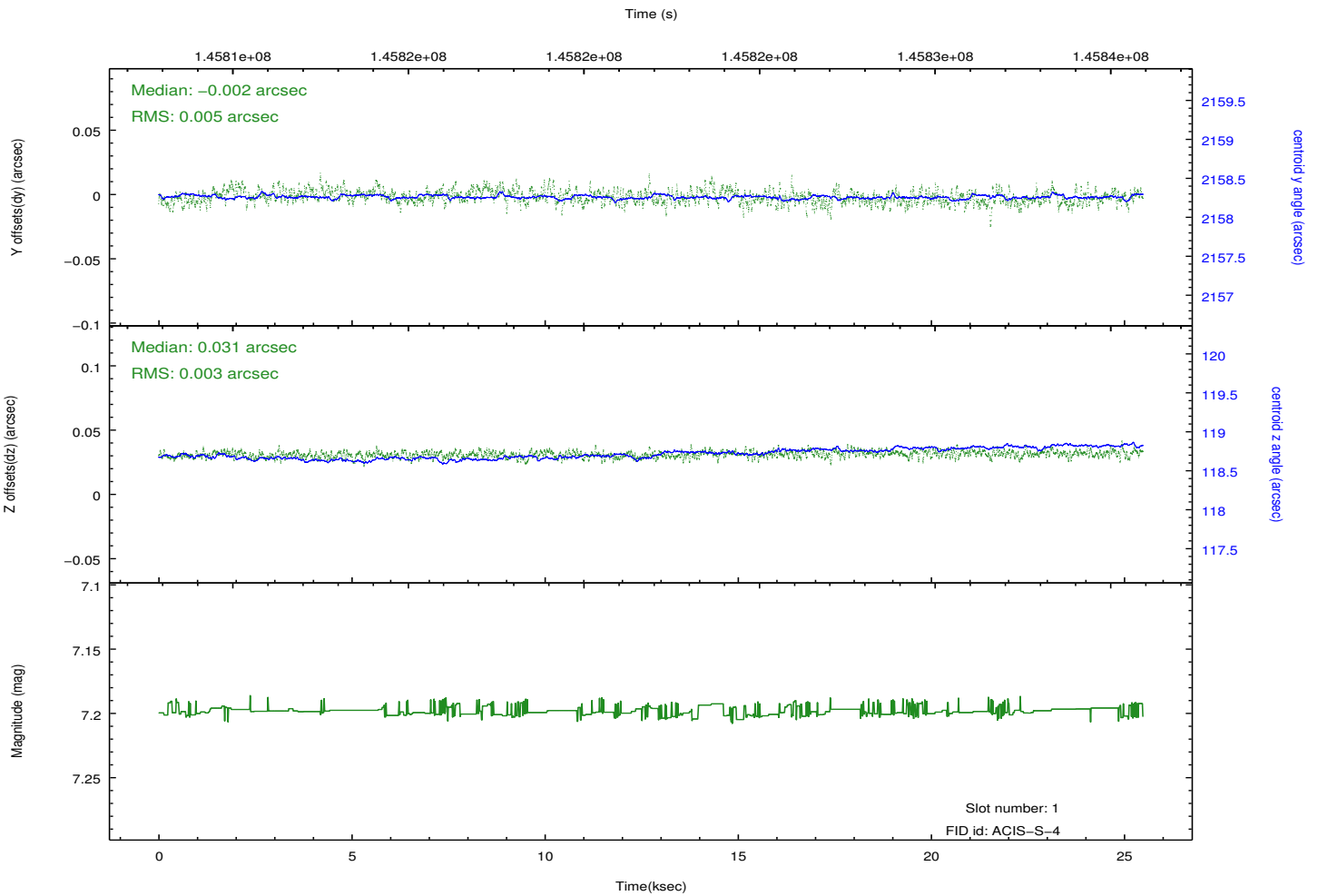
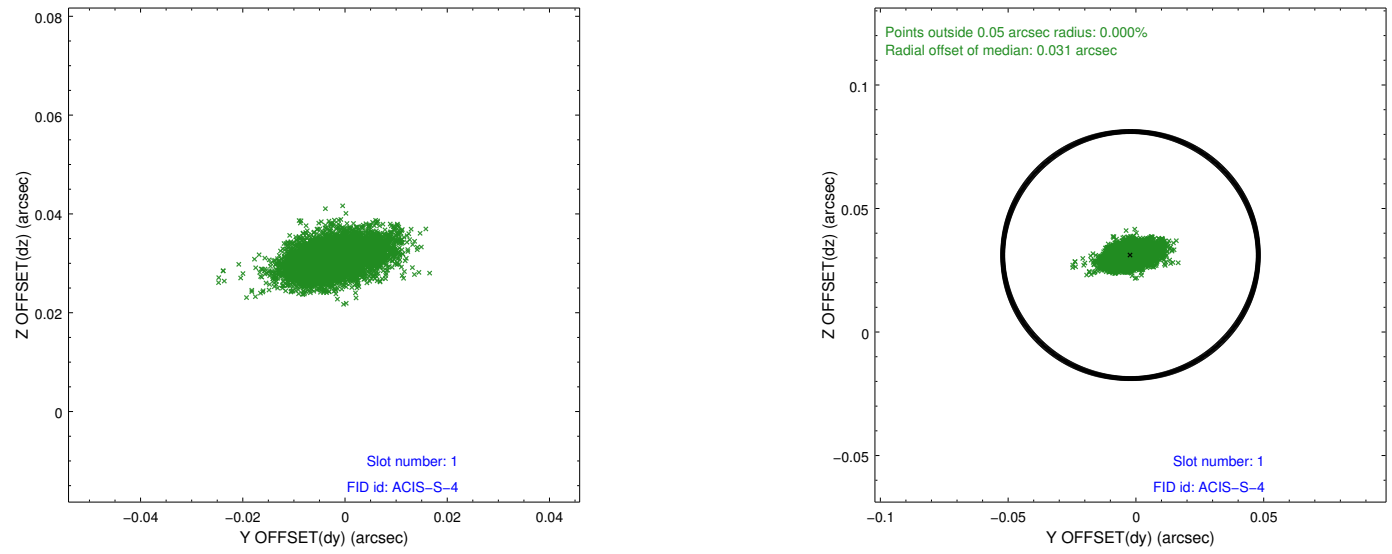


2.5 FID Slots

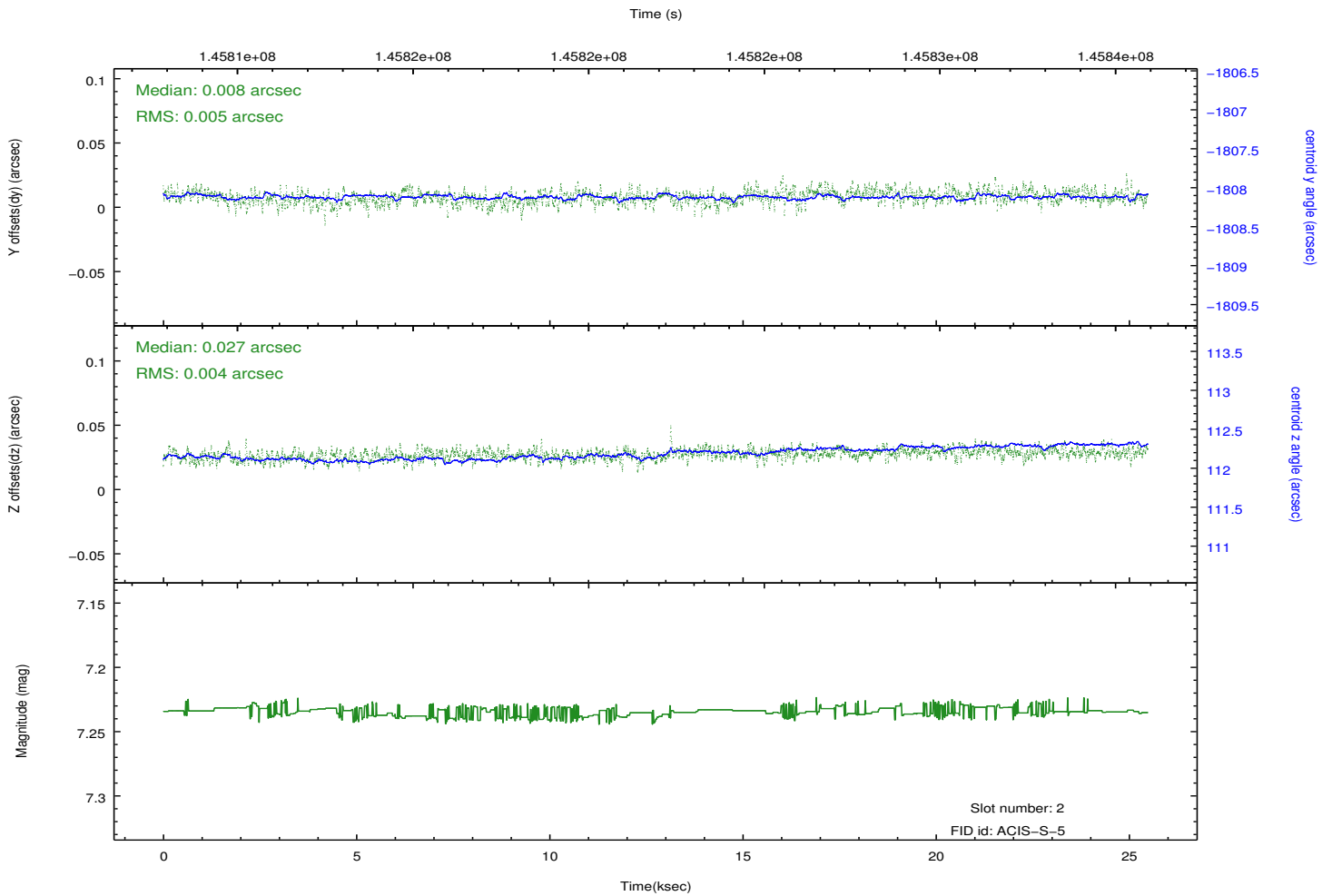
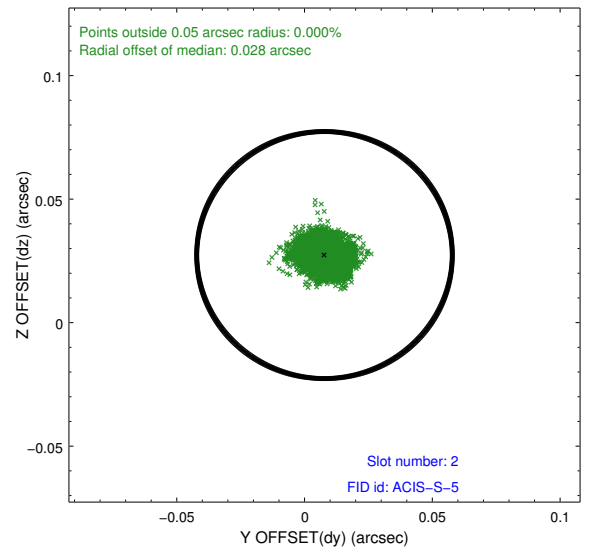
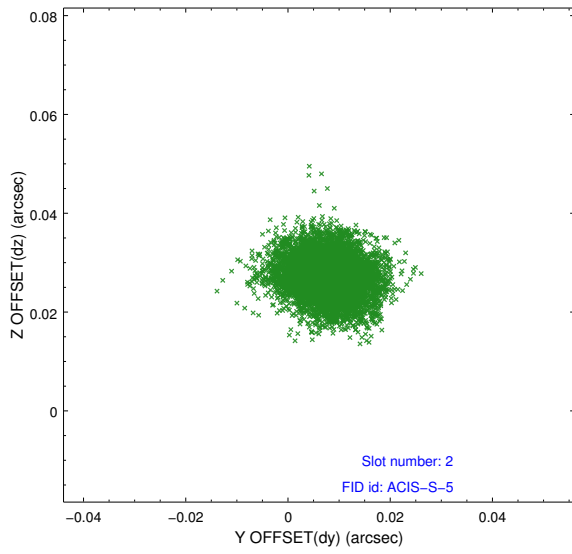
2.5.1 Slot 0



2.5.2 Slot 1



2.5.3 Slot 2

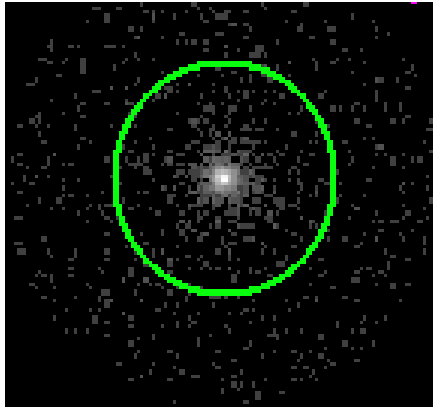


3 Gratings

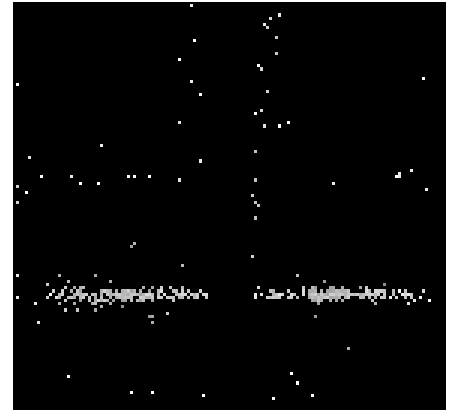
3.1 HEG Arm



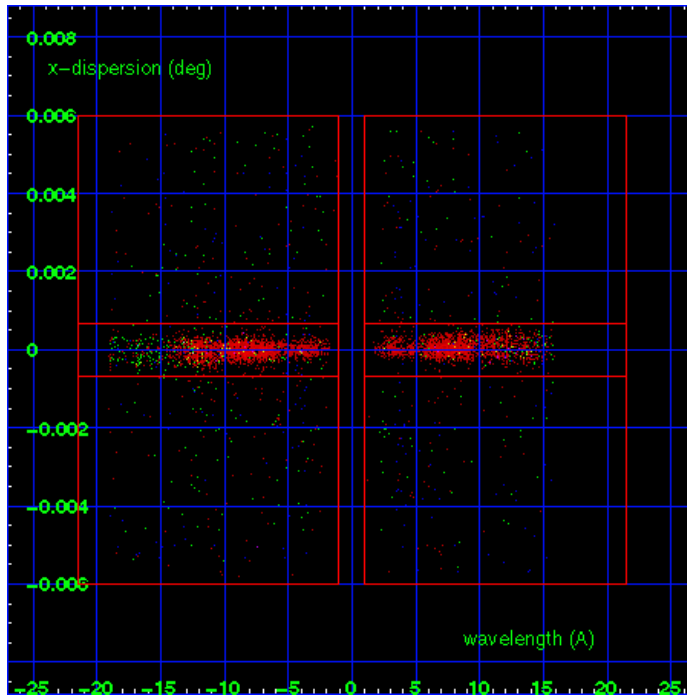
HEG Order Sort 123



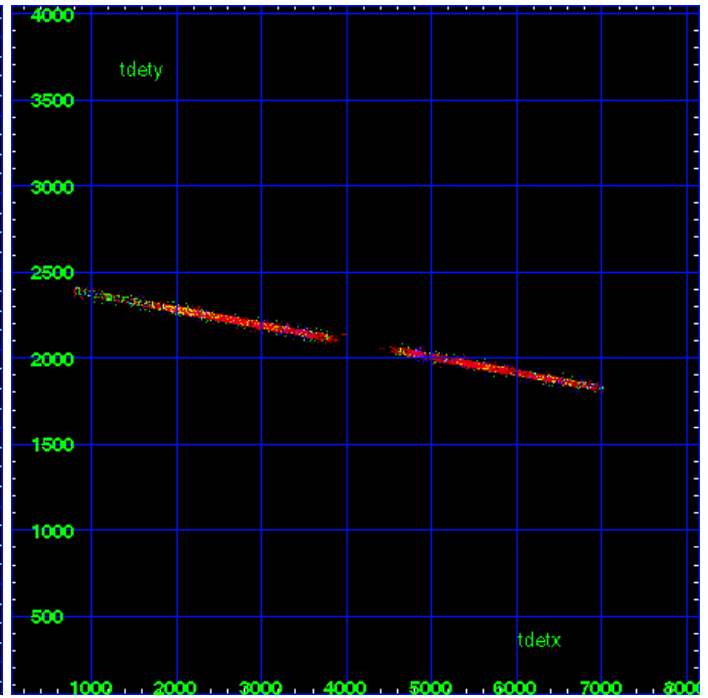
HEG Zero Order



HEG Order Sort ALL

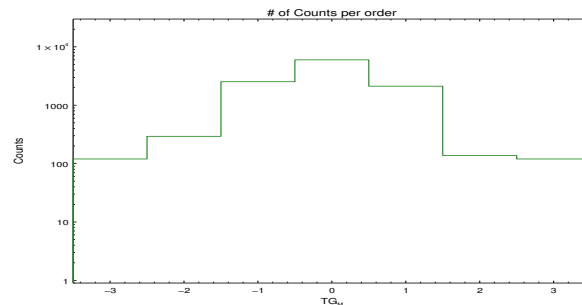


Spot Image HEG

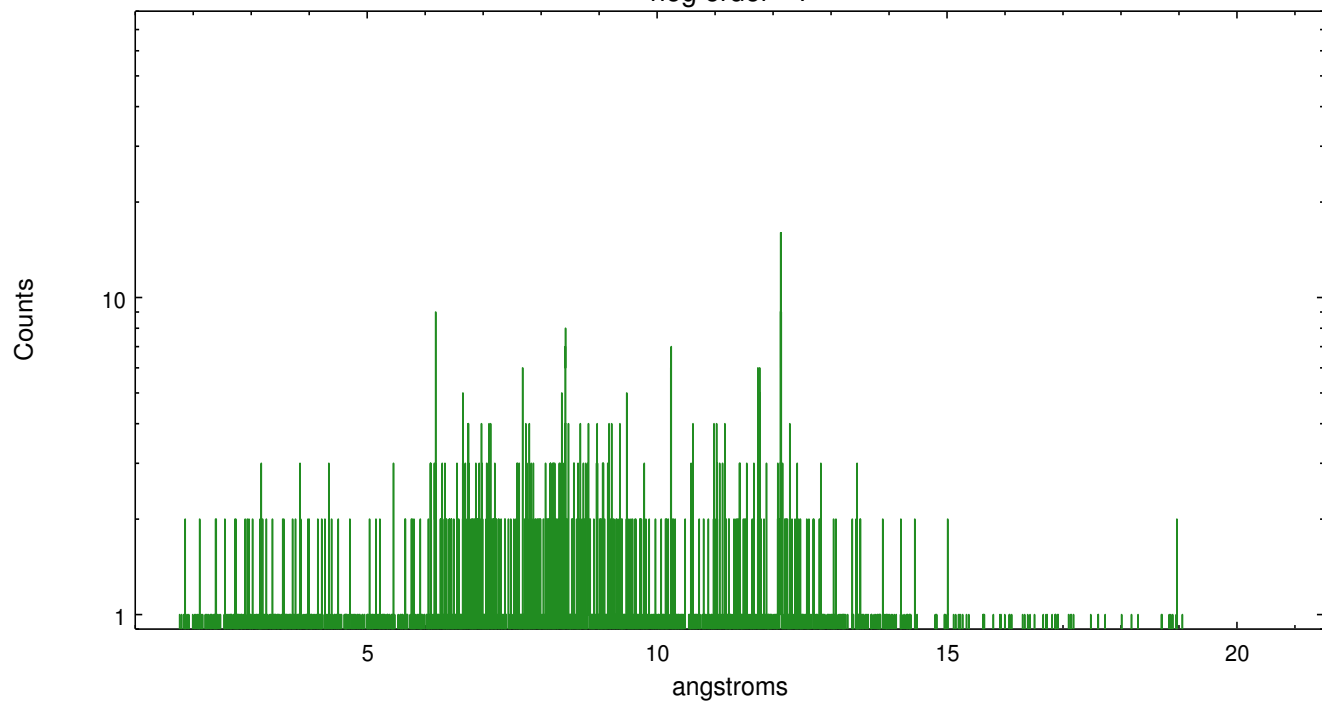


Full Detector HEG

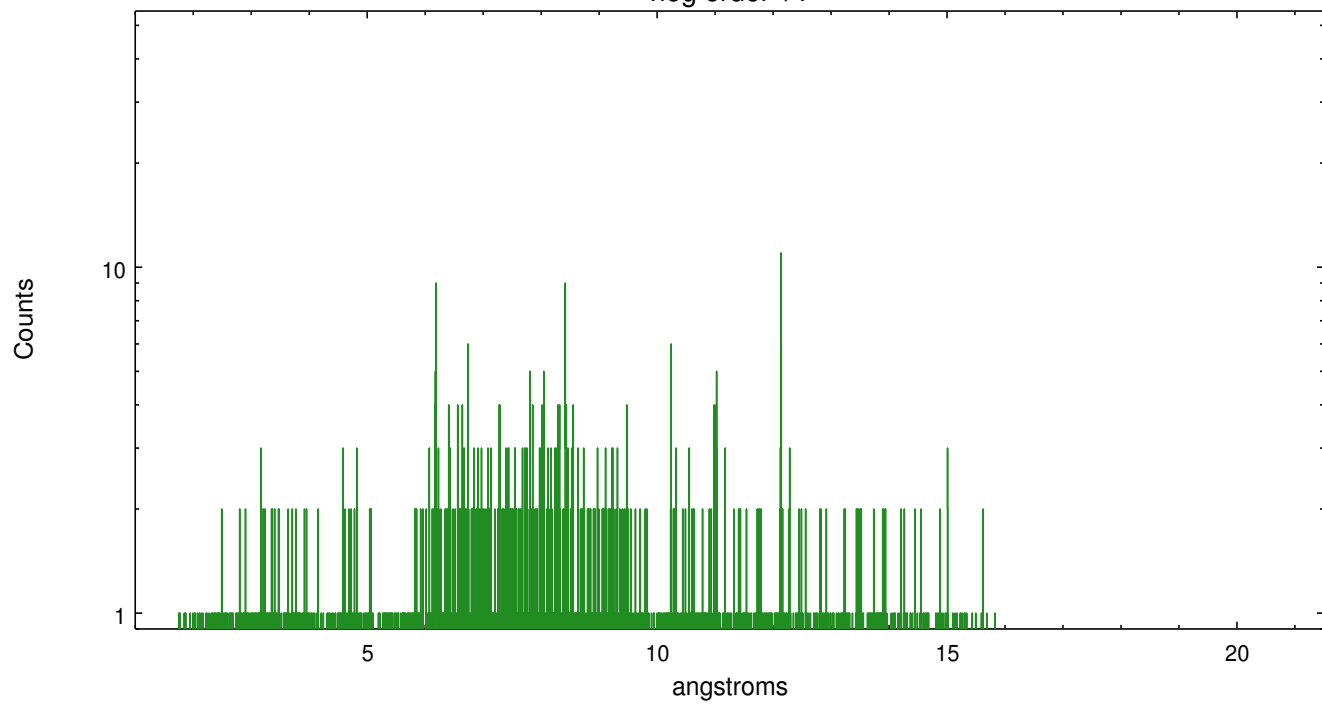
	order -3	order -2	order -1	order 0	order 1	order 2	order 3
Events	120	293	2526	5981	2117	138	120



heg order -1



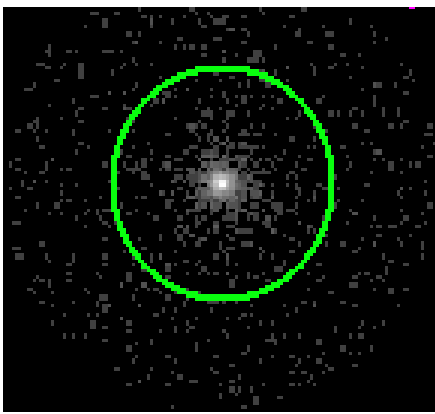
heg order +1



3.2 MEG Arm



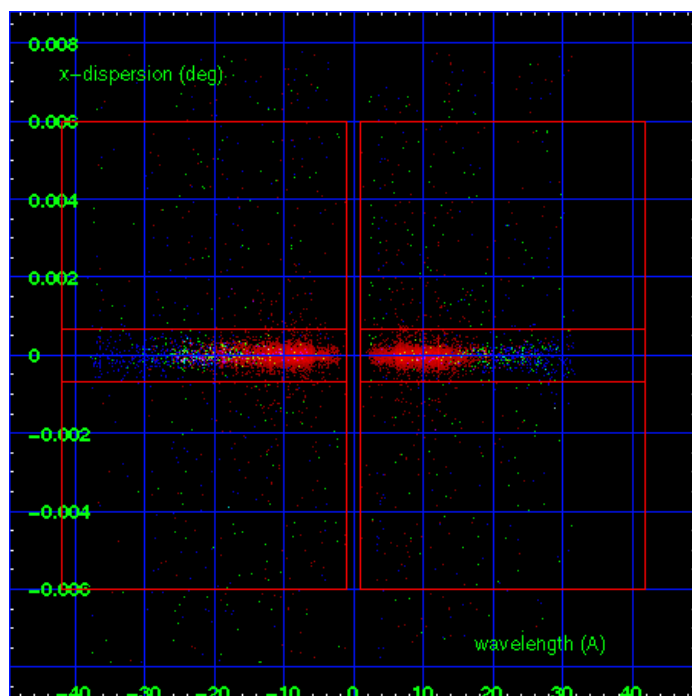
MEG Order Sort 123



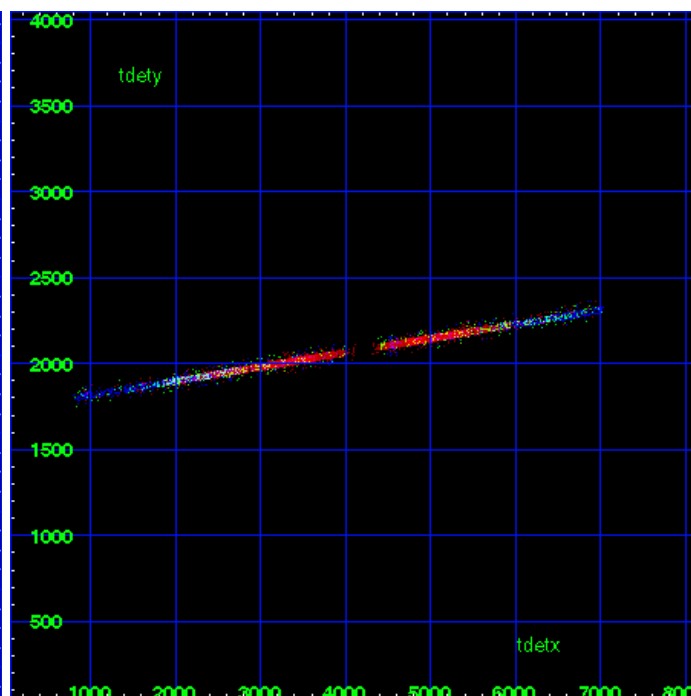
MEG Zero Order



MEG Order Sort ALL

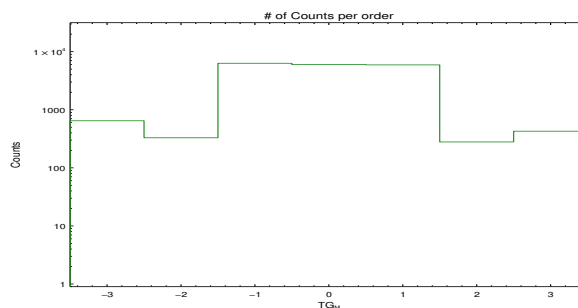


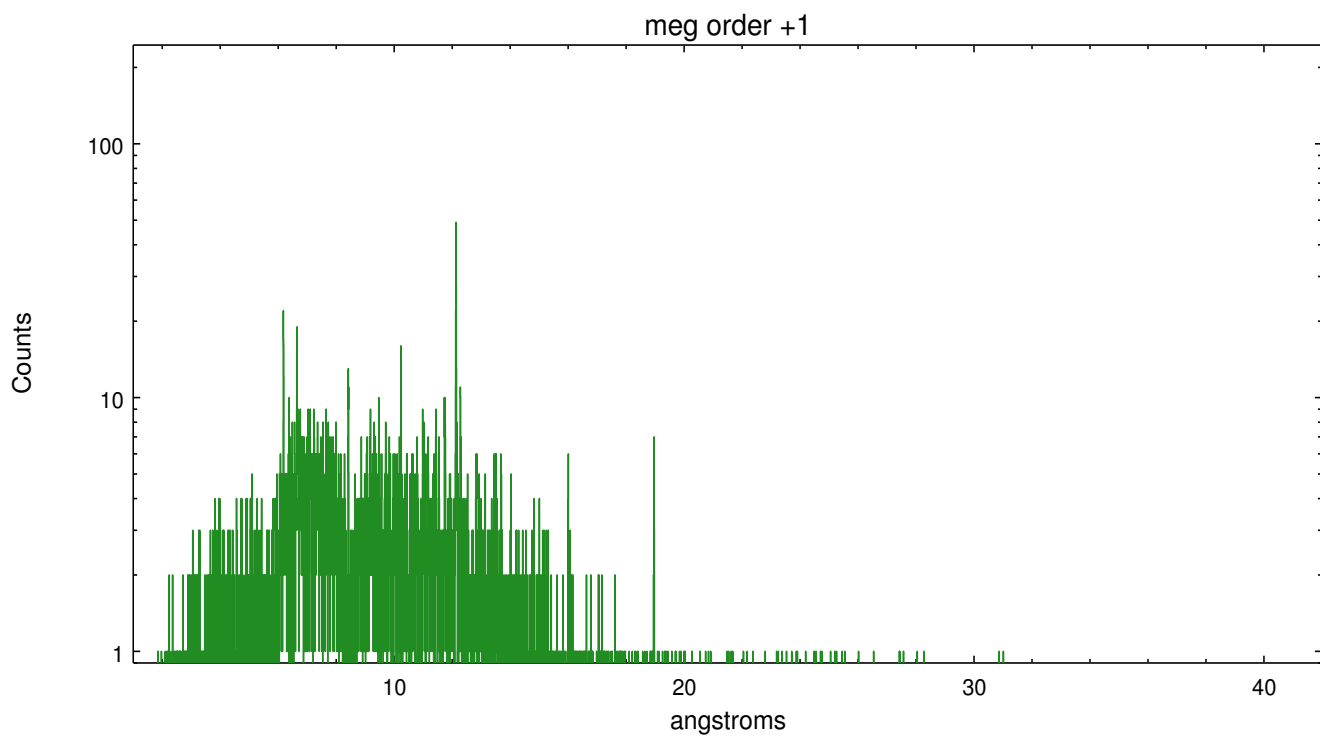
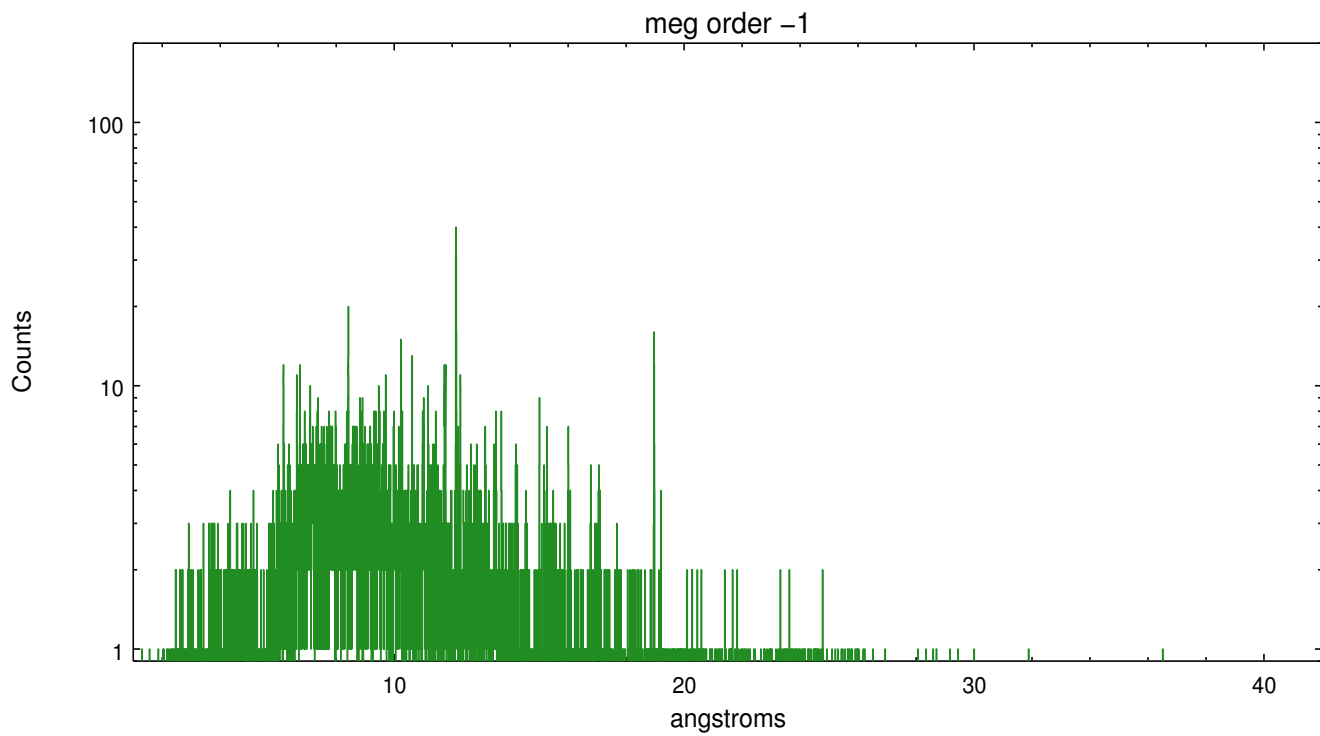
Spot Image MEG



Full Detector MEG

	order -3	order -2	order -1	order 0	order 1	order 2	order 3
Events	646	329	6301	5981	5916	279	427





A Summary

A.1 Status

V&V Scientist	Joy Nichols
V&V Date (YYYY-MM-DD)	2012.10.17
V&V Edition	1
V&V Disposition and Status	OK
V&V Charge Time	24.197

A.2 Comments

Obs 2534 began slightly less than 7.5 days after end of obs 2533, so monitor constraint met