

V&V Reference Report

L2 ASCDS Version : 8.4.5

Observation 2554 - L2 Version 4
Chandra X-Ray Center

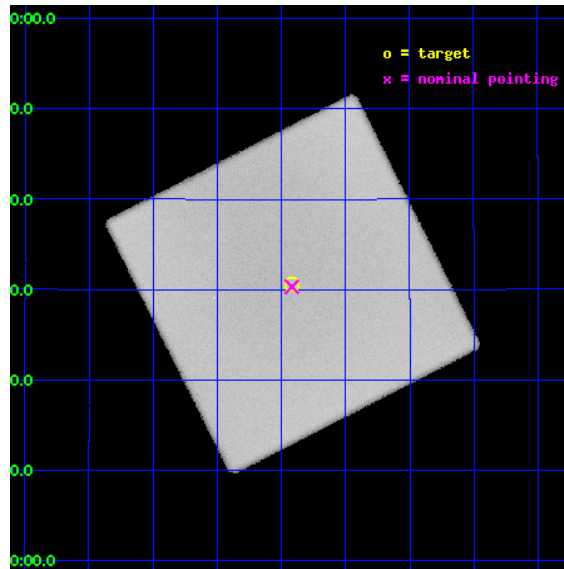
L2 Processing Date : Sep 29 2012

Contents

1	Front	2
2	OBI	3
2.1	OBI	3
2.1.1	Images	3
2.1.2	Parameters	4
2.1.3	Events	4
2.2	Compared Parameters	5
2.3	Aspect	6
2.4	Star Slots	9
2.4.1	Slot 3	9
2.4.2	Slot 4	10
2.4.3	Slot 5	11
2.4.4	Slot 6	12
2.4.5	Slot 7	13
2.5	FID Slots	14
2.5.1	Slot 0	14
2.5.2	Slot 1	15
2.5.3	Slot 2	16
A	Summary	17
A.1	Status	17
A.2	Comments	17

1 Front

seq_num	200162	Sequence number
obs_id	2554	Observation id
title	BURIED ALIVE IN THE CORONAL GRAVEYARD?!	Proposal title
observer	Dr. Thomas Ayres	Principal investigator
object	ALPHA TAURI	Source name
ra_targ	68.98	Observer's specified target RA [deg]
dec_targ	16.509167	Observer's specified target Dec [deg]
ra_nom	68.979631882997	Nominal RA [deg]
dec_nom	16.505049063173	Nominal Dec [deg]
roll_nom	288.15511298013	Nominal Roll [deg]
revision	4	Processing version of data
ontime	18870.250757486	[s]
livetime	17902.807755944	Ontime multiplied by DTCOR
l2events	1747098	Number of level 2 events

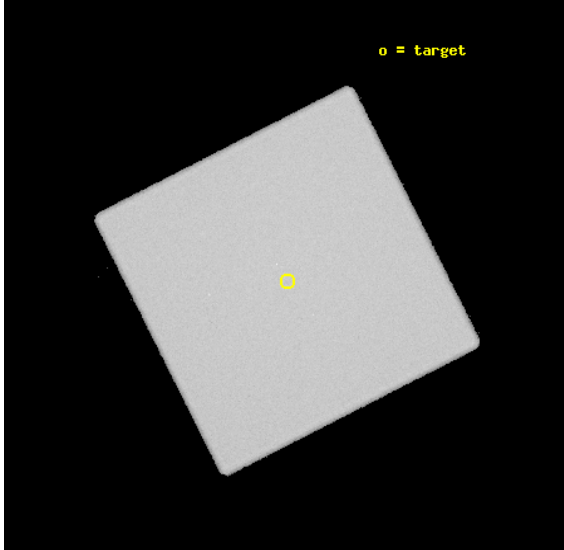


2 OBI

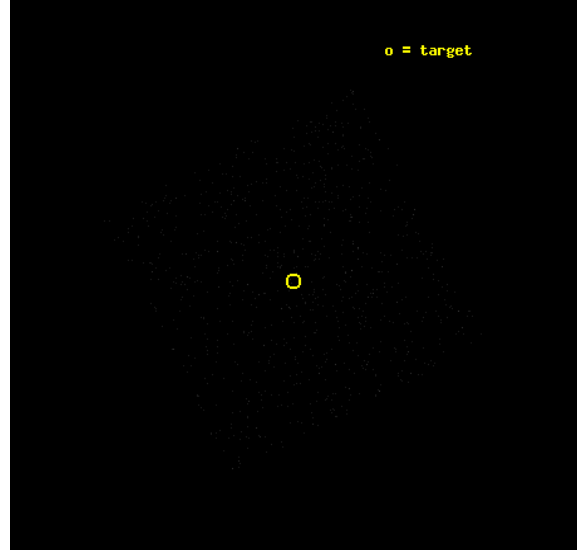
2.1 OBI

2.1.1 Images

Level 1 Image



Level 1 Bad Events



2.1.2 Parameters

obi_num	1	Obi number	sched_exp_time	19000.000000	[s] Scheduled observation exposure time
ascdsver	8.4.5	Processing system revision	ontime	18870.250757486	[s]
caldbver	4.5.2	 	l1events	2735816	Number of level 1 events
date	2012-09-29T14:53:41	Date and time of file creation			
revision	4	Processing version of data			

2.1.3 Events

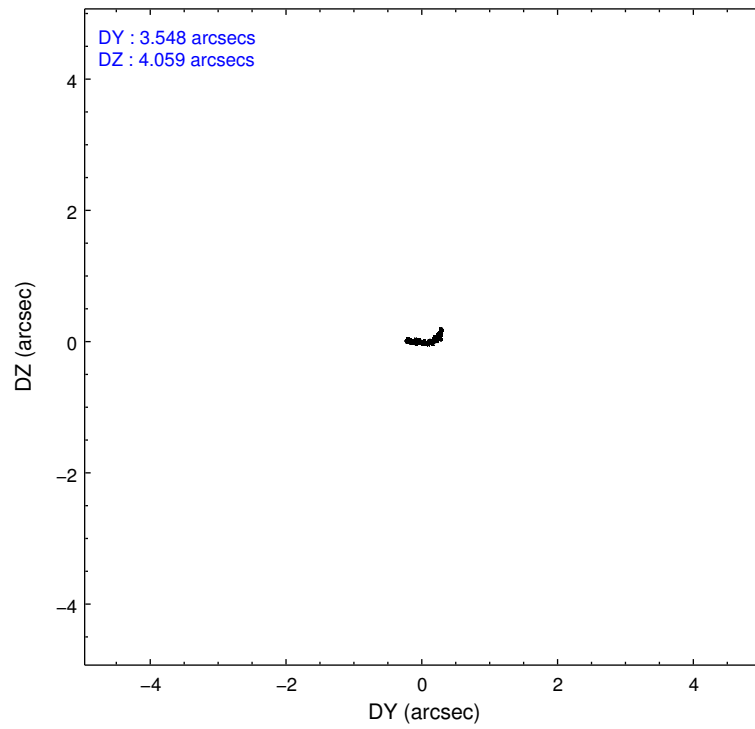
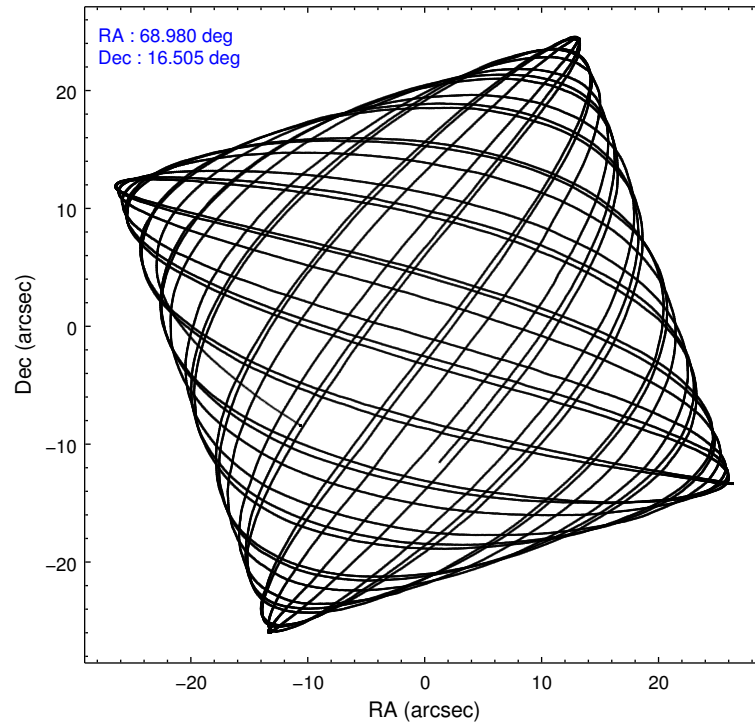
Level 1 Events

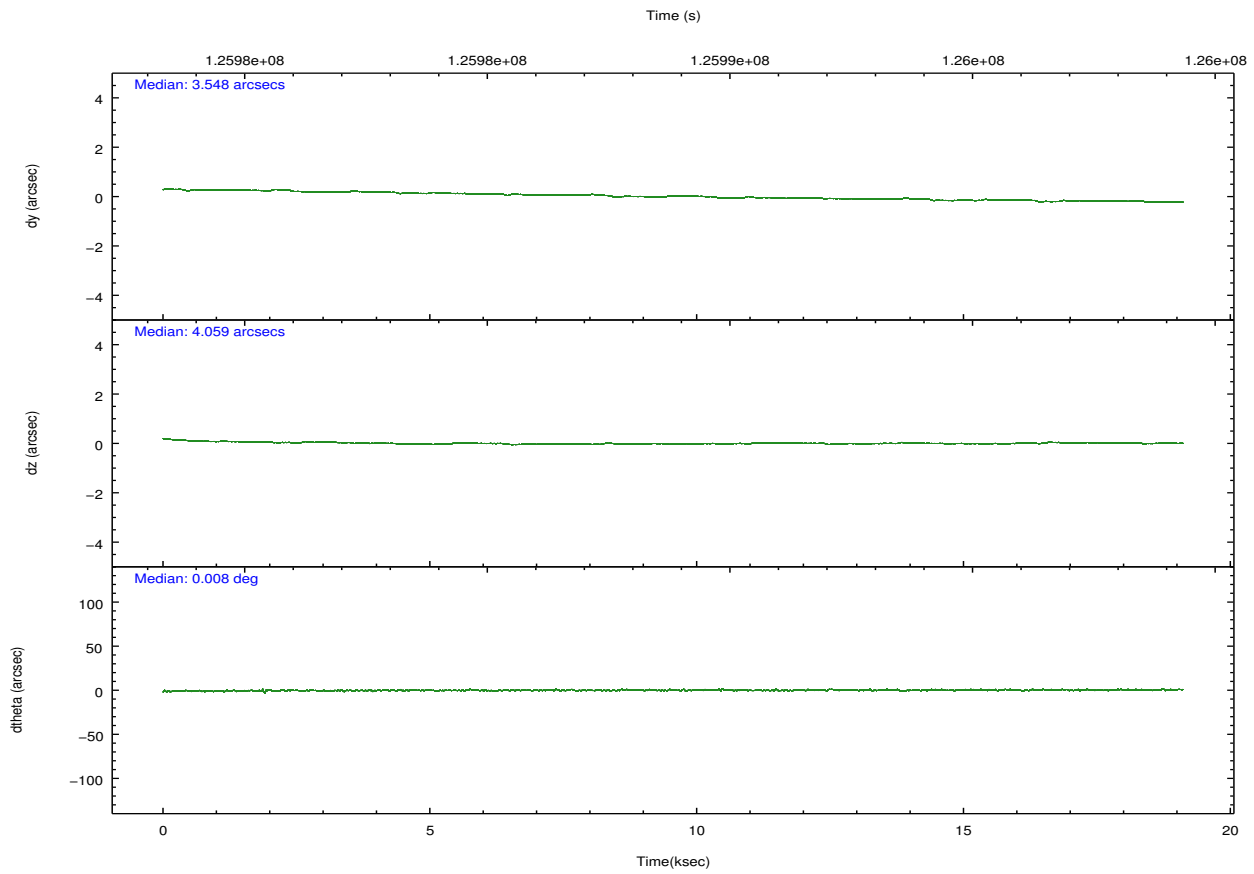
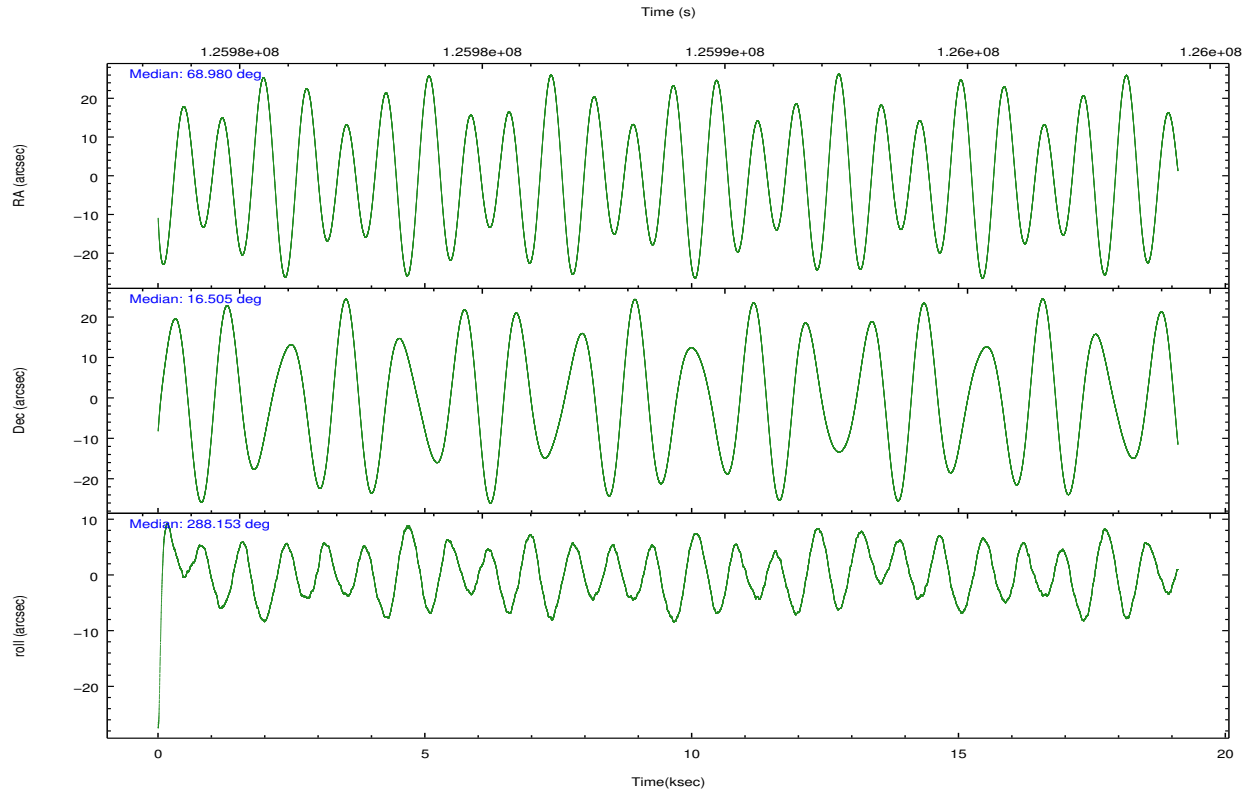
	segment 0
level 1 events	2735816
rejected events	10064
rejected %	0%

2.2 Compared Parameters

Parameter	Planned	Actual	Parameter	Planned	Actual
Instrument	HRC	HRC	Obspar format version number	7	7
Detector	HRC-I	HRC-I	Obspar file type	PREDICTED	ACTUAL
Grating	NONE	NONE	Obspar update status	NONE	UPDATED
Data mode	OBSERVING	OBSERVING			
Observation mode	POINTING	POINTING			
[deg] Pointing RA	68.958167	68.97963188299727			
[deg] Pointing Dec	16.522620	16.50504906317269			
[deg] Pointing Roll	288.256717	288.155112980125			
[mm] SIM focus pos	-1.040293	-1.038866356238299			
[mm] SIM defocus	0	0.001426264420575141			
[mm] SIM translation stage pos	126.985494	126.9829799899862			
[mm] SIM translation stage offset	0	0.002508901615314585			
[s] Observation start time (MET)	125979385.184000	125978453.08922			
Observation start date	2001-12-29T02:15:21	2001-12-29T02:00:53			
[s] Observation end time (MET)	125998385.184000	125998974.61504			
Observation end date	2001-12-29T07:32:01	2001-12-29T07:42:54			

2.3 Aspect



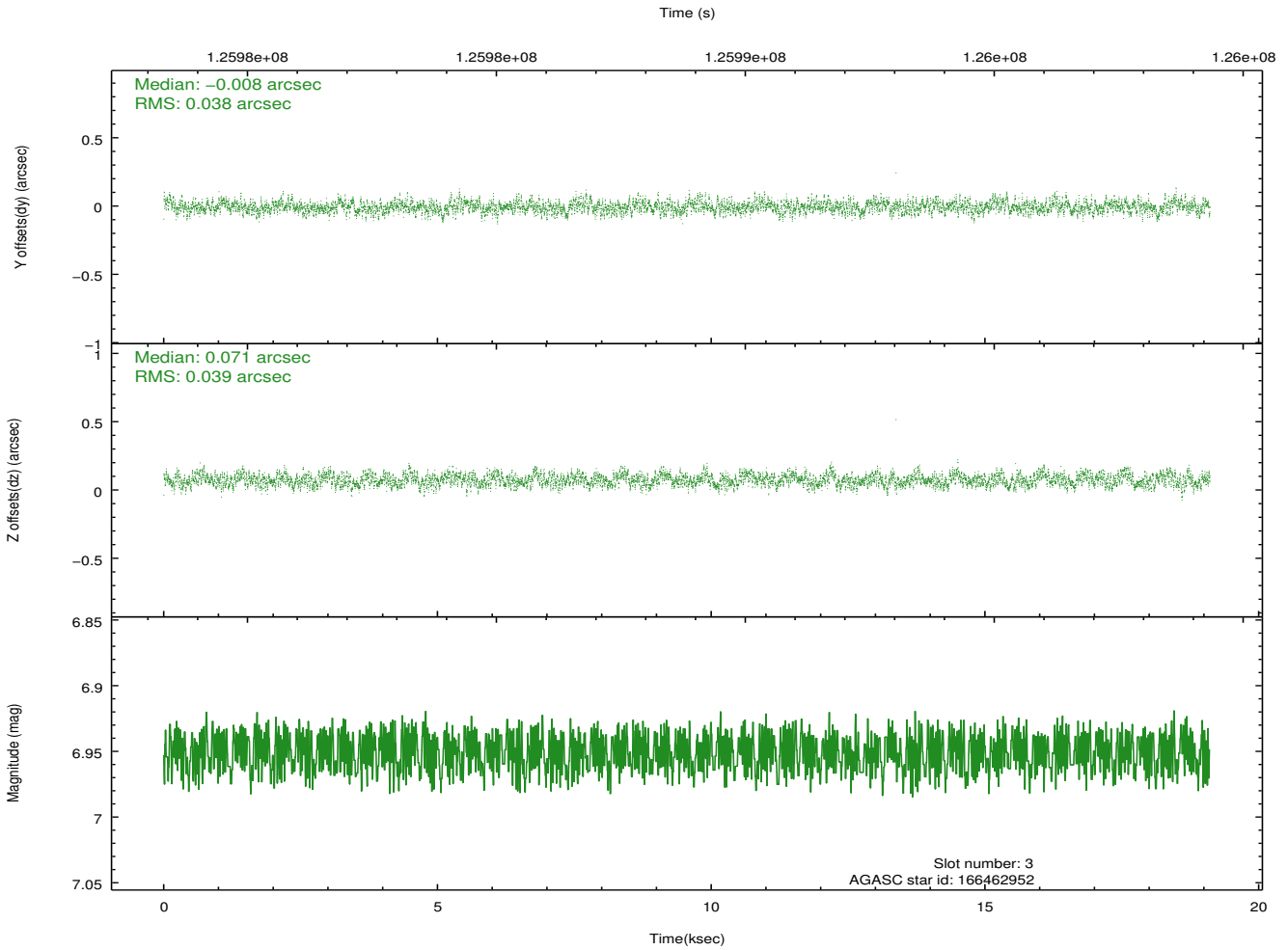
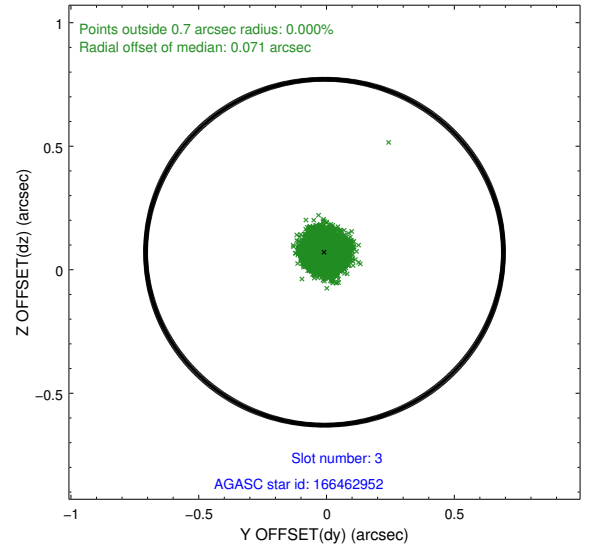
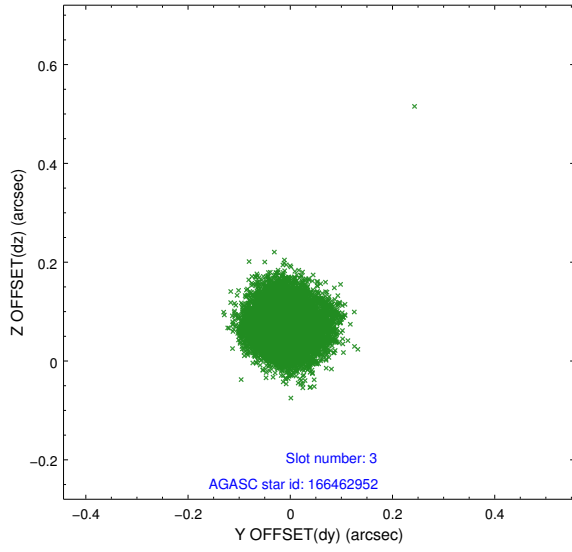


Slot Statistics

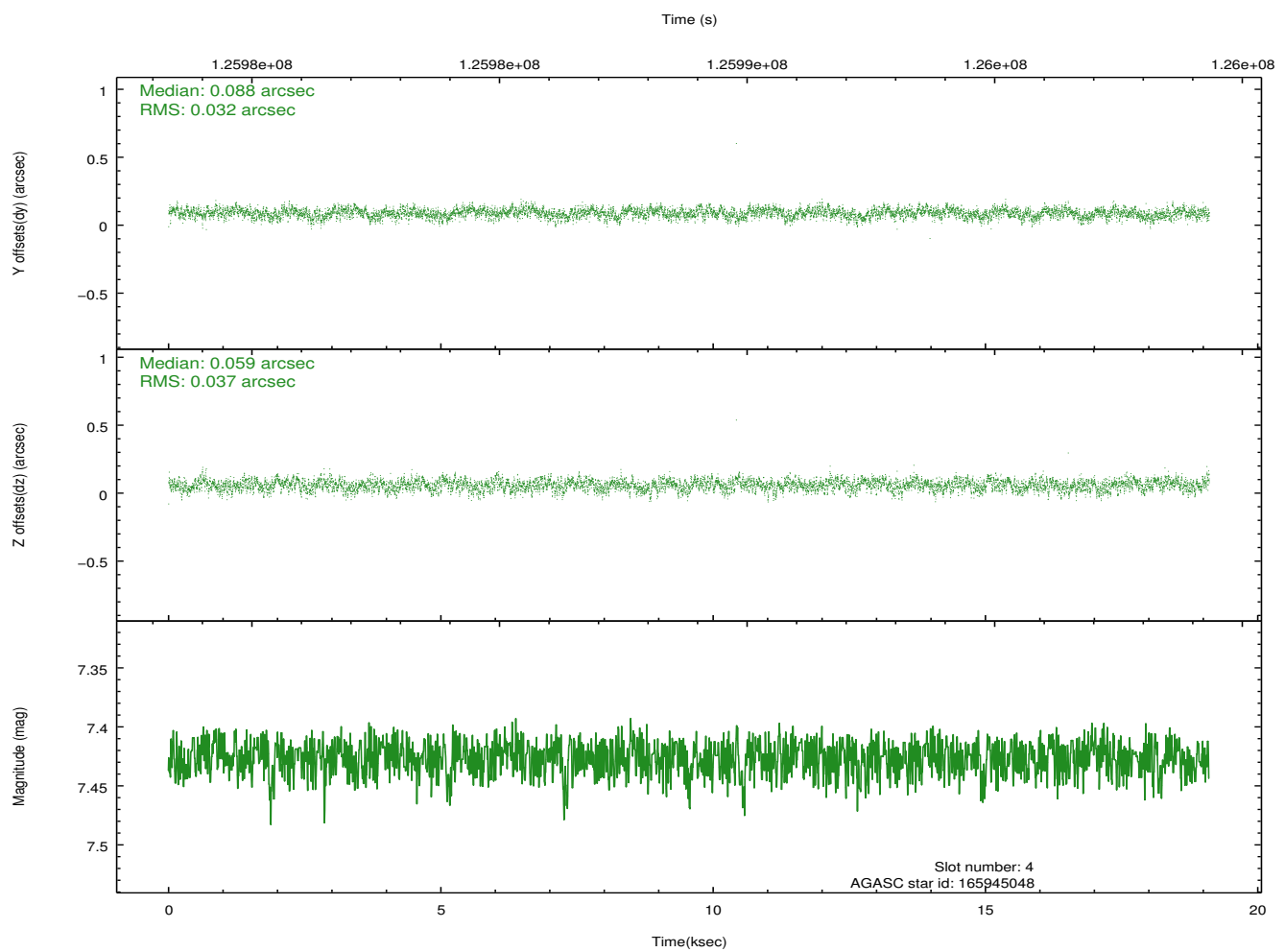
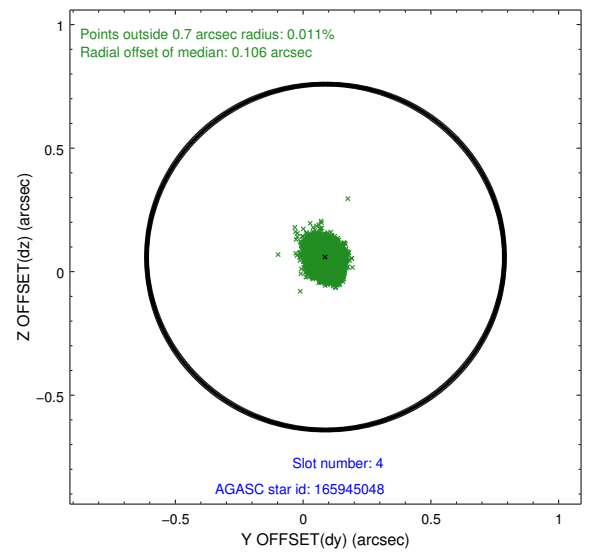
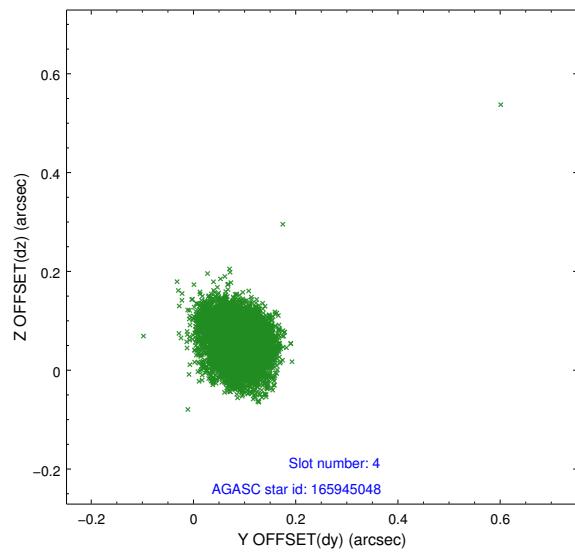
slot	status	id	mag	n_pts	med_dy	med_dz	dr1	dr2	ra	dec	mean_y	mean_z
0	FID	HRC-I-1	6.95	4661	0.027	0.086	0.007	0.013	0.000000	0.000000	-759.02	-1291.75
1	FID	HRC-I-2	6.99	4661	0.081	-0.087	0.006	0.011	0.000000	0.000000	853.50	-1293.76
2	FID	HRC-I-3	7.03	4661	0.011	-0.087	0.006	0.012	0.000000	0.000000	-1187.35	1012.37
3	GUIDE	166462952	6.95	9322	-0.008	0.071	0.059	0.090	68.744224	16.994686	-1844.78	-167.64
4	GUIDE	165945048	7.43	9322	0.088	0.059	0.052	0.083	68.890799	16.144701	1219.24	-647.99
5	GUIDE	165945976	7.56	9319	-0.097	0.018	0.050	0.082	69.294108	15.937380	2364.79	444.17
6	GUIDE	165940792	8.73	9321	0.024	-0.120	0.063	0.105	69.129101	16.331928	837.20	345.14
7	GUIDE	165938344	9.31	9318	-0.007	-0.030	0.091	0.156	68.408192	16.762499	-1415.99	-1529.56

2.4 Star Slots

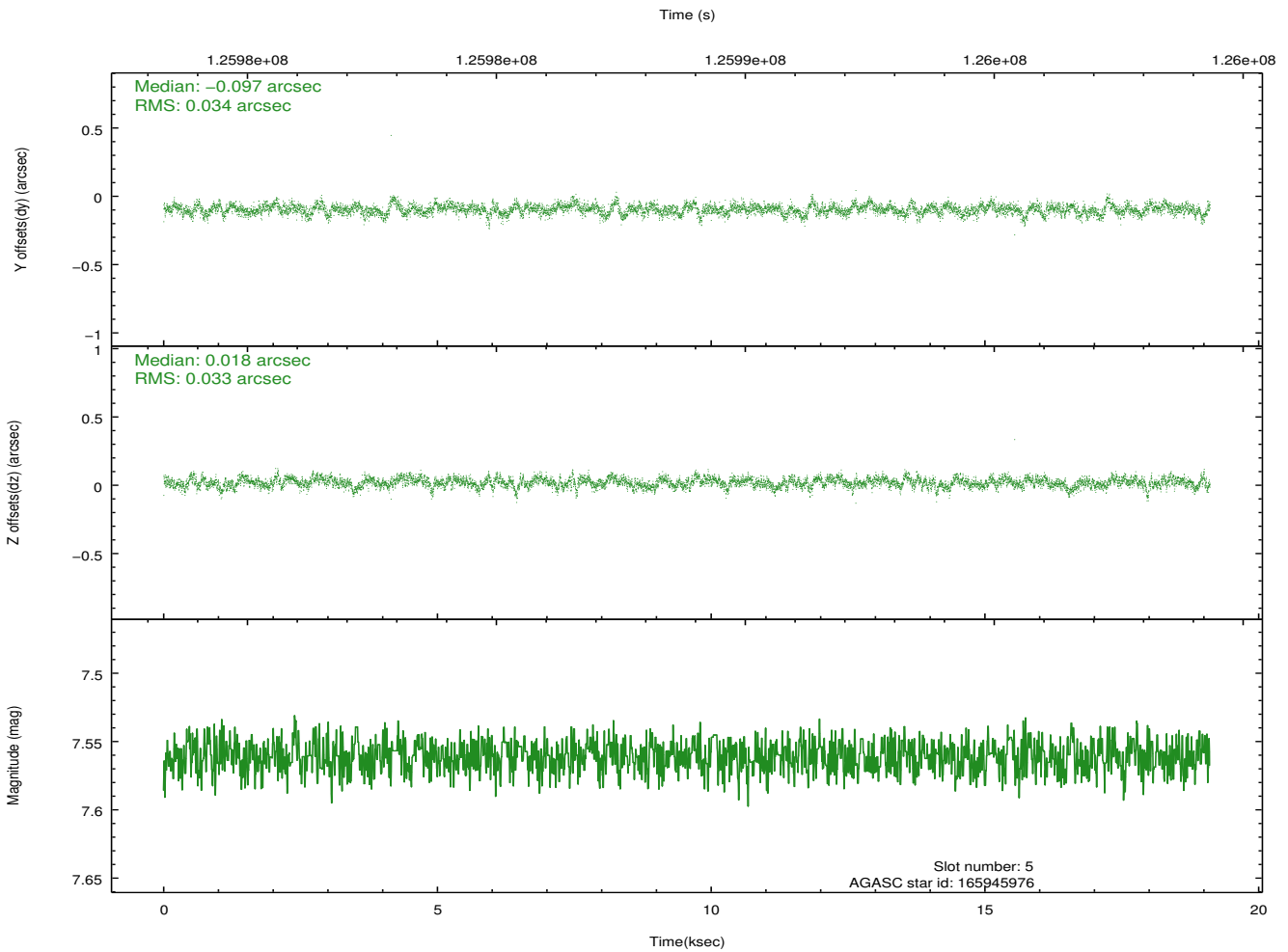
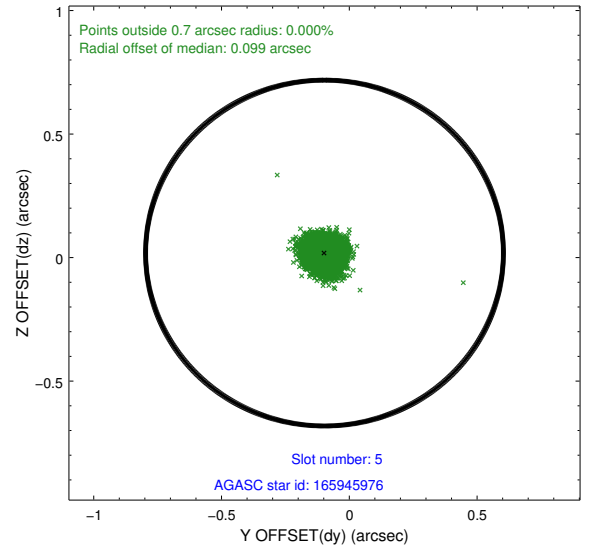
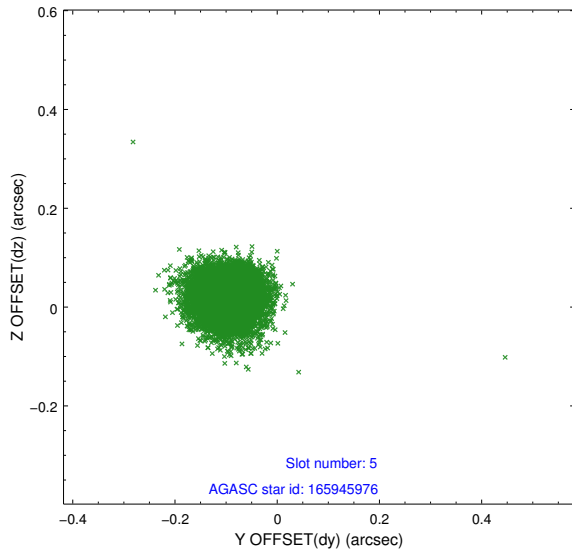
2.4.1 Slot 3



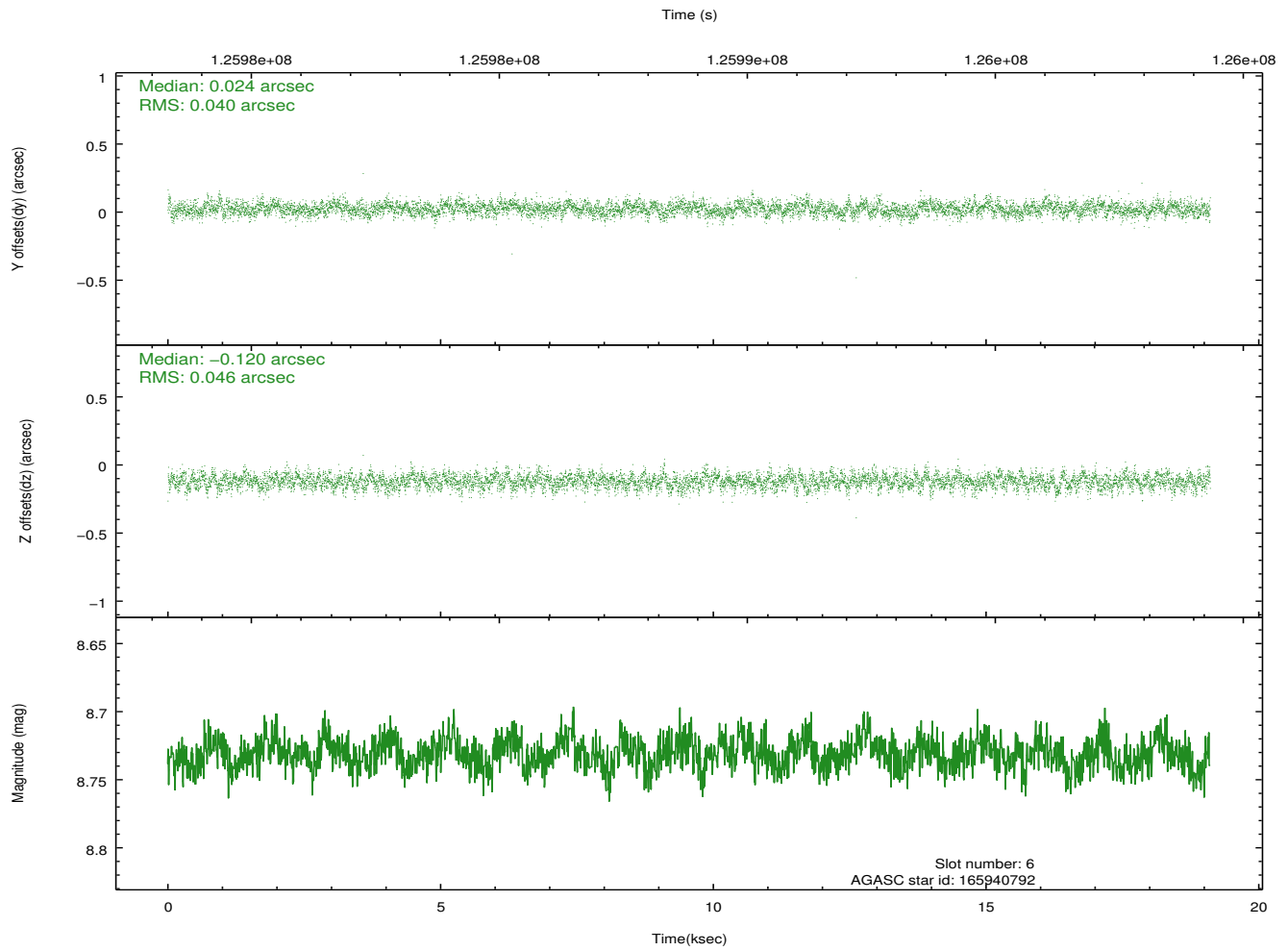
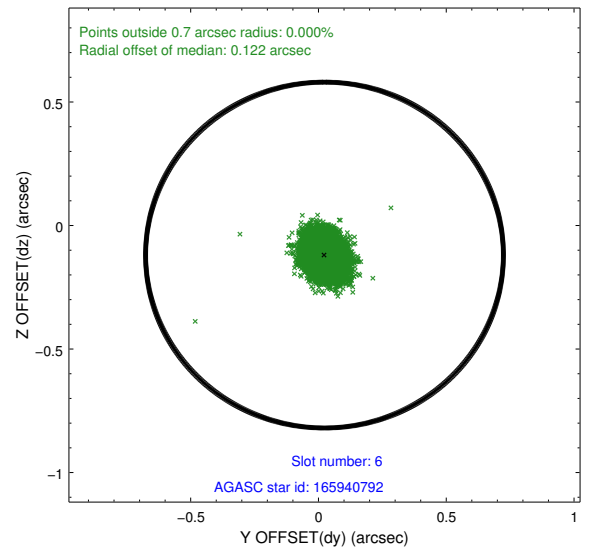
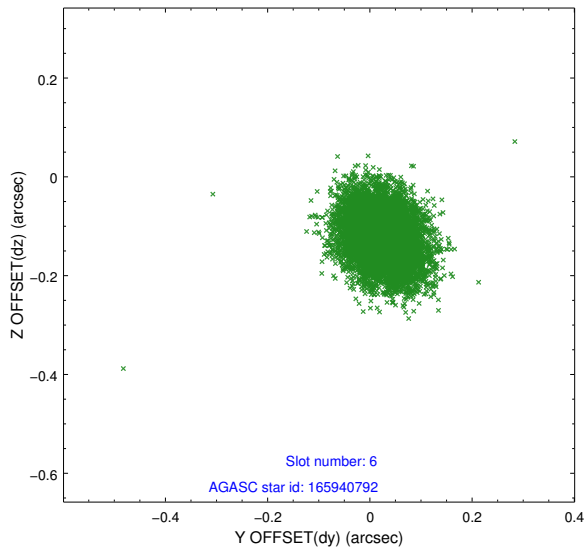
2.4.2 Slot 4



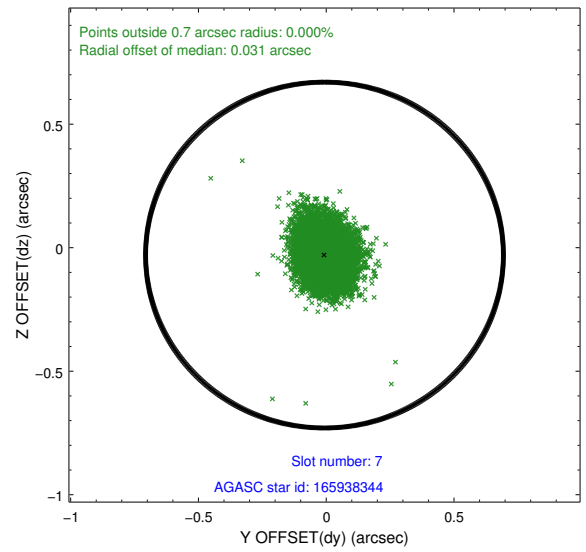
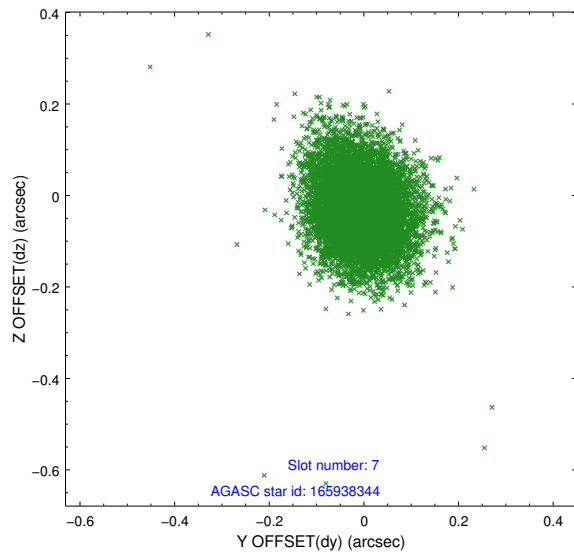
2.4.3 Slot 5



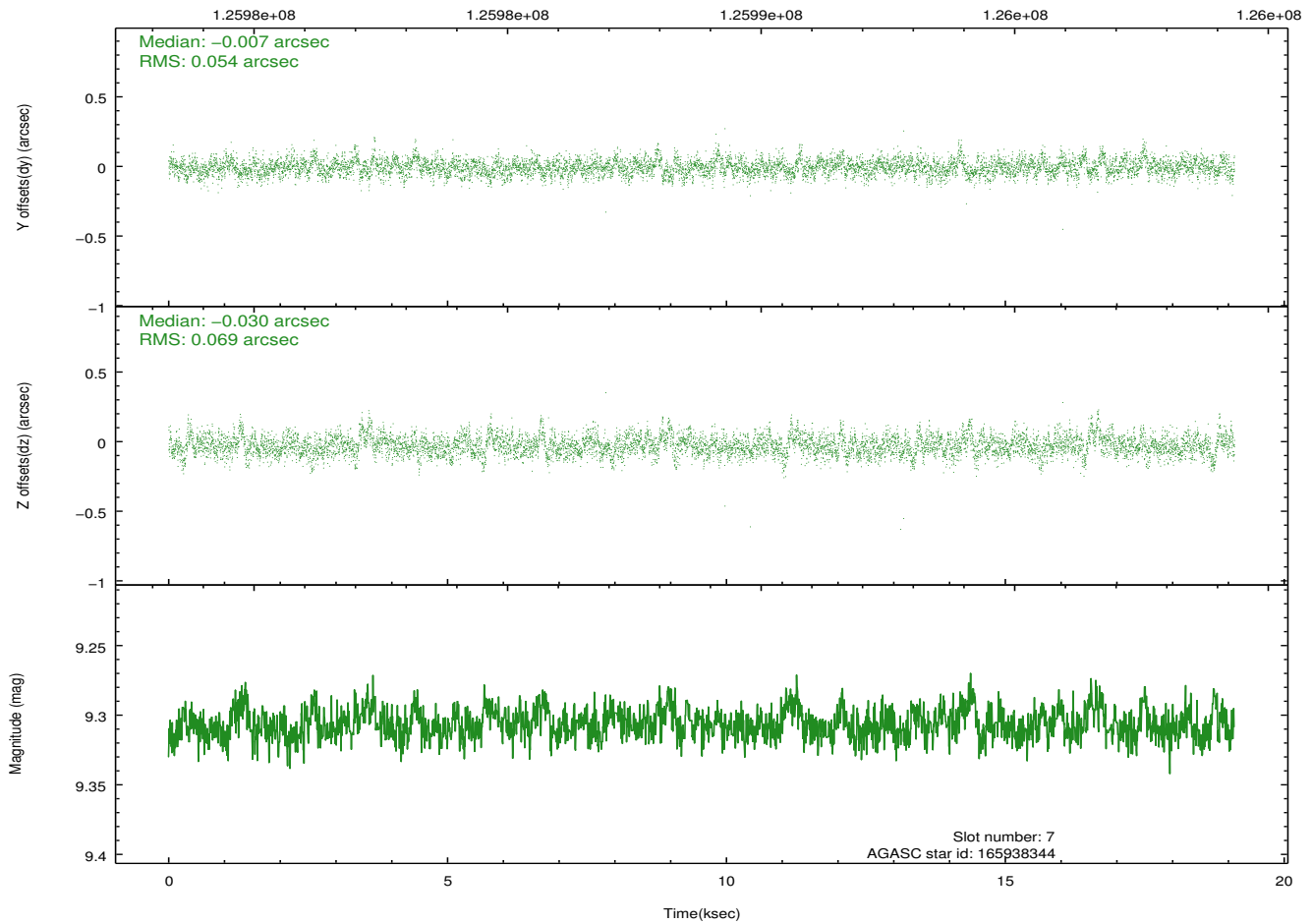
2.4.4 Slot 6



2.4.5 Slot 7

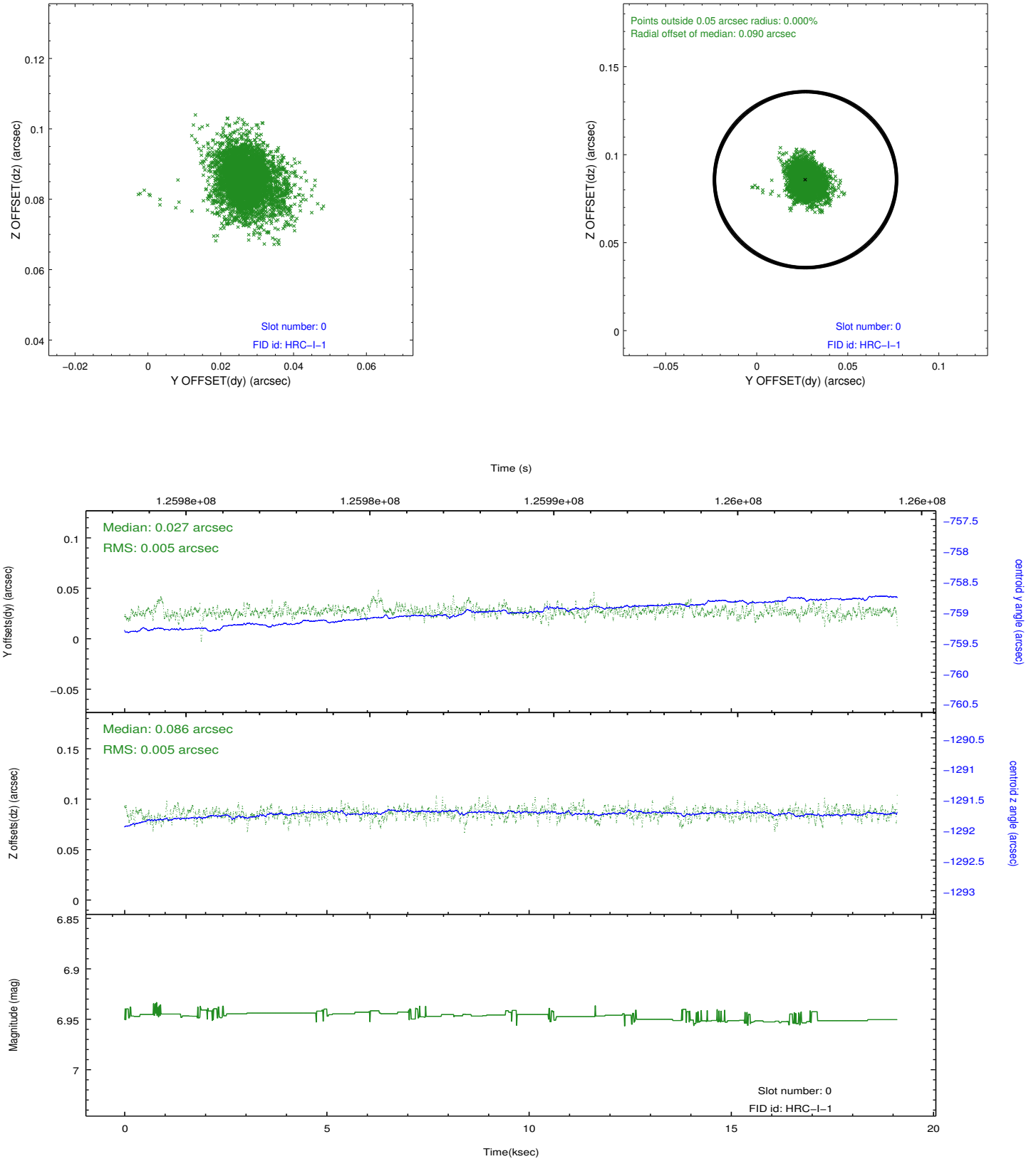


Time (s)

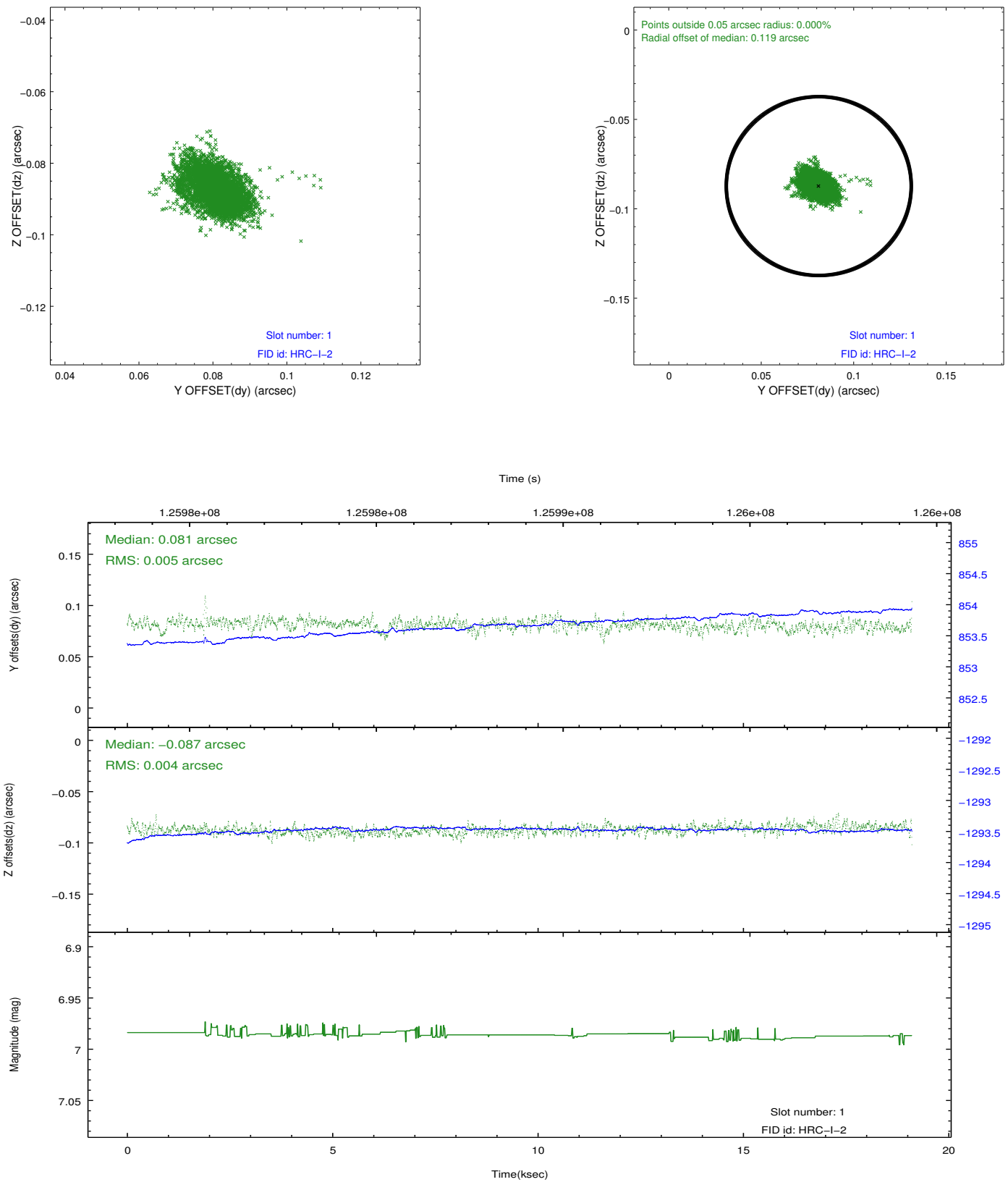


2.5 FID Slots

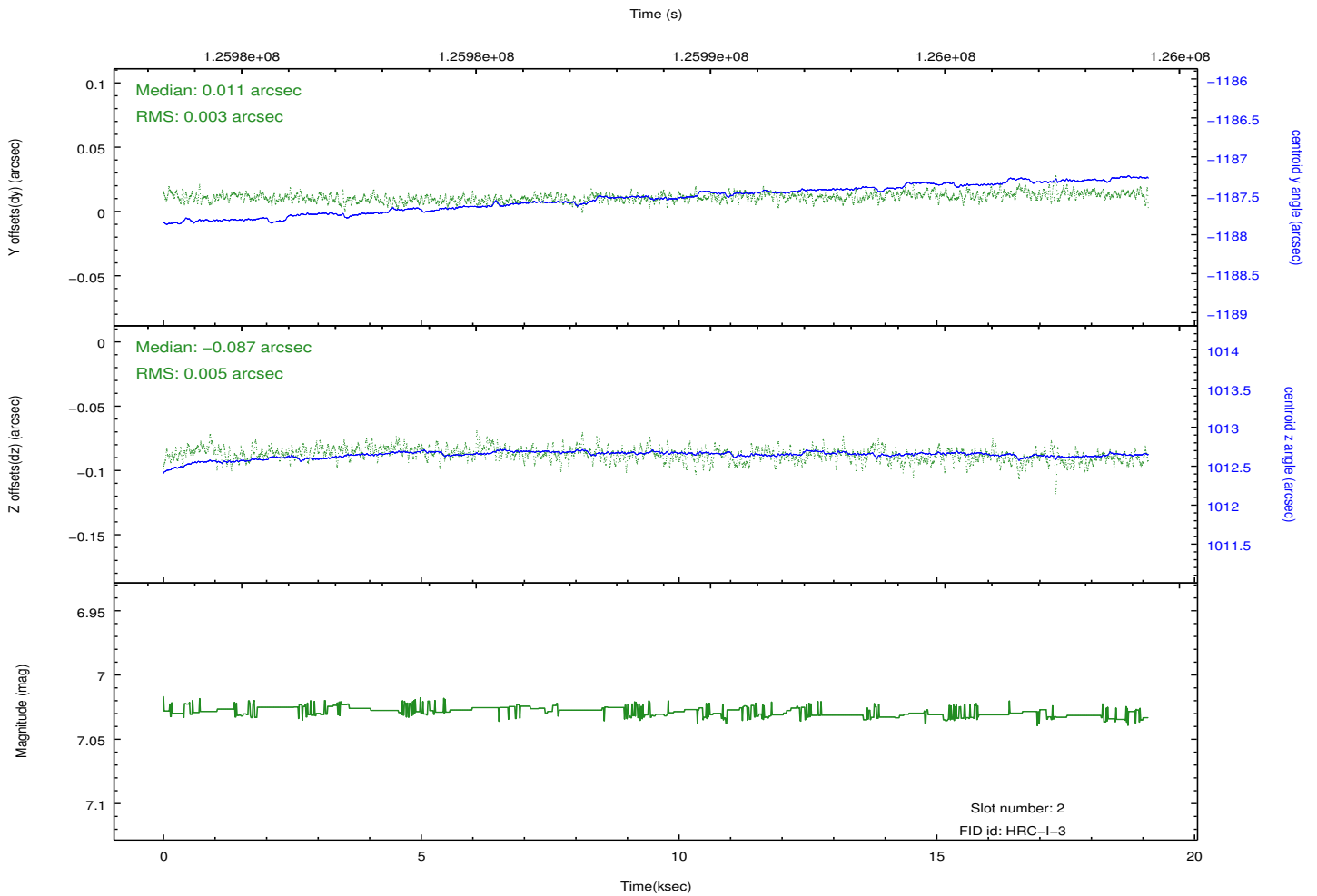
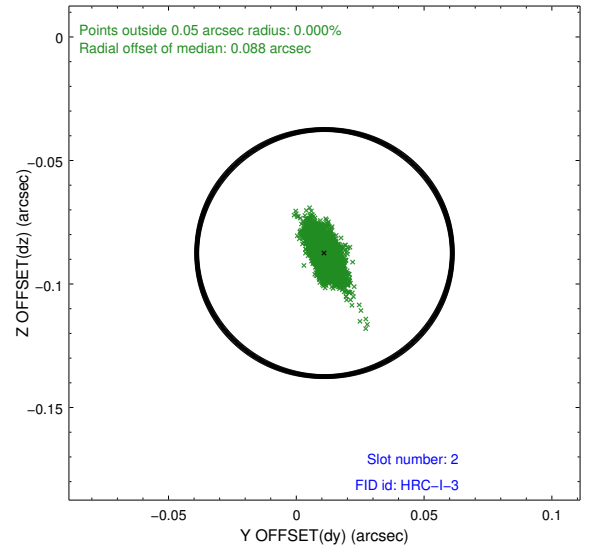
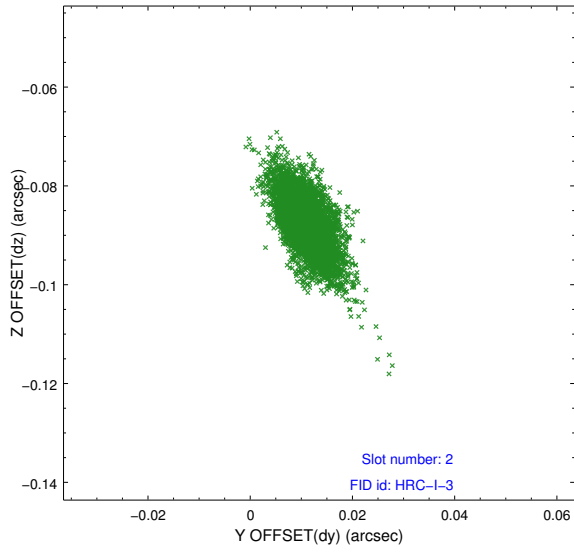
2.5.1 Slot 0



2.5.2 Slot 1



2.5.3 Slot 2



A Summary

A.1 Status

V&V Scientist	Jen Lauer
V&V Date (YYYY-MM-DD)	2012.10.01
V&V Edition	1
V&V Disposition and Status	OK
V&V Charge Time	18.866

A.2 Comments

Joint Proposal: HST