

V&V Reference Report

L2 ASCDS Version : 8.4.5

Observation 2574 - L2 Version 3
Chandra X-Ray Center

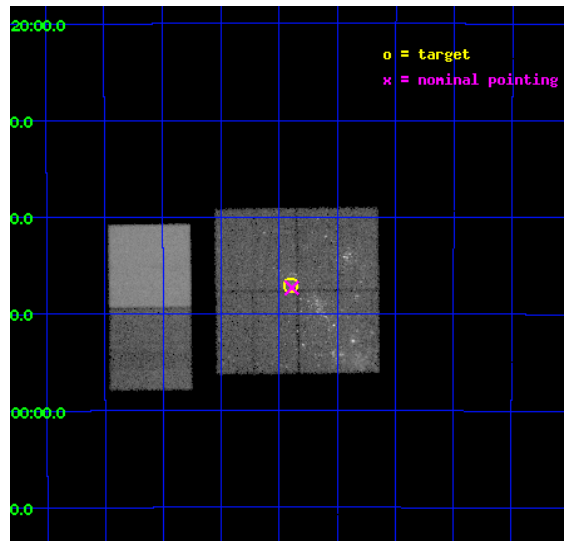
L2 Processing Date : Oct 13 2012

Contents

1	Front	2
2	OBI	3
2.1	OBI	3
2.1.1	Images	3
2.1.2	Bias	3
2.1.3	Parameters	4
2.1.4	Events	4
2.2	Compared Parameters	5
2.3	Aspect	6
2.4	Star Slots	9
2.4.1	Slot 3	9
2.4.2	Slot 4	10
2.4.3	Slot 5	11
2.4.4	Slot 6	12
2.4.5	Slot 7	13
2.5	FID Slots	14
2.5.1	Slot 0	14
2.5.2	Slot 1	15
2.5.3	Slot 2	16
A	Summary	17
A.1	Status	17
A.2	Comments	17

1 Front

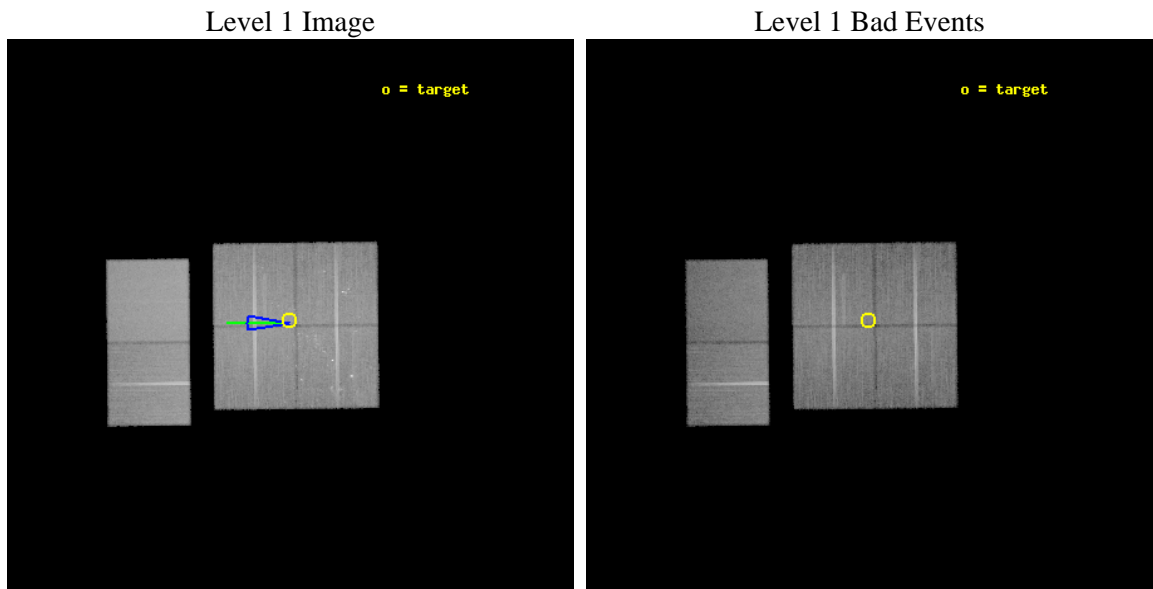
seq_num	200182	Sequence number
obs_id	2574	Observation id
title	TRACING THE CHRONICLE OF MASSIVE YOUNG STARS IN A GIANT MOLECULAR CLOUD NGC 6334	Proposal title
observer	Dr Yuichiro Ezo	Principal investigator
object	NGC 6334 REGION 1	Source name
dtcycle	0	
cycle	P	events from which exps? Prim/Second/Both
ra_targ	260.225	Observer's specified target RA [deg]
dec_targ	-35.784444	Observer's specified target Dec [deg]
ra_nom	260.22270144624	Nominal RA [deg]
dec_nom	-35.788703950443	Nominal Dec [deg]
roll_nom	269.37198758783	Nominal Roll [deg]
revision	3	Processing version of data
ontime	40156.799850404	Sum of GTIs [s]
livetime	39648.310271177	Livetime [s]
ontime0	40156.799850404	Sum of GTIs [s]
ontime1	40156.799850404	Sum of GTIs [s]
ontime2	40156.799850404	Sum of GTIs [s]
ontime3	40156.799850404	Sum of GTIs [s]
ontime6	40156.799850404	Sum of GTIs [s]
ontime7	40156.799850404	Sum of GTIs [s]
l2events	287865	Number of level 2 events



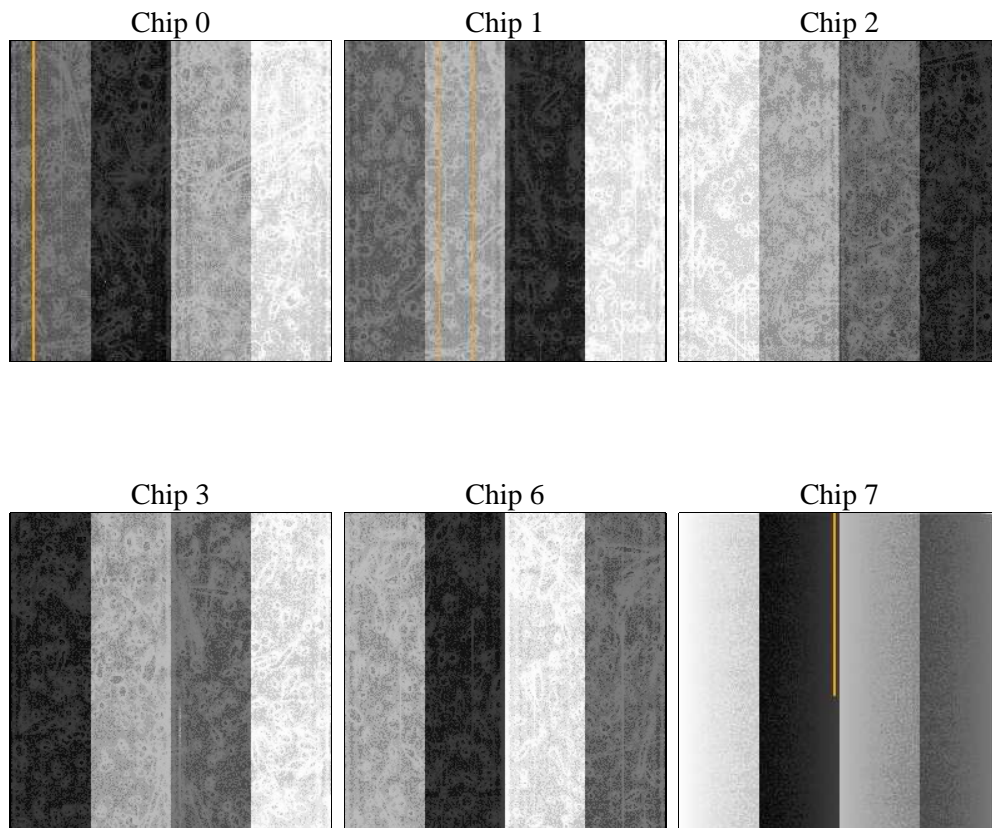
2 OBI

2.1 OBI

2.1.1 Images



2.1.2 Bias



2.1.3 Parameters

obi_num	1	Obi number	sched_exp_time	40000.000000	[s] Scheduled observation exposure time
ascdsver	8.4.5	Processing system revision	ontime	40156.799850404	Sum of GTIs [s]
caldbver	4.5.2	 	ontime0	40156.799850404	Sum of GTIs [s]
date	2012-10-13T06:10:36	Date and time of file creation	ontime1	40156.799850404	Sum of GTIs [s]
revision	3	Processing version of data	ontime2	40156.799850404	Sum of GTIs [s]
			ontime3	40156.799850404	Sum of GTIs [s]
			ontime6	40156.799850404	Sum of GTIs [s]
			ontime7	40156.799850404	Sum of GTIs [s]
			l1events	1560365	Number of level 1 events

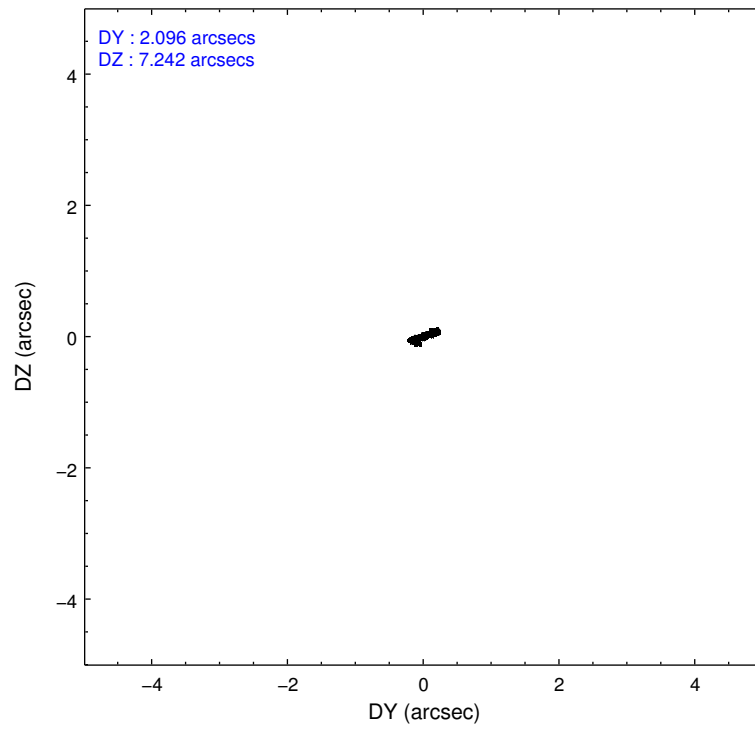
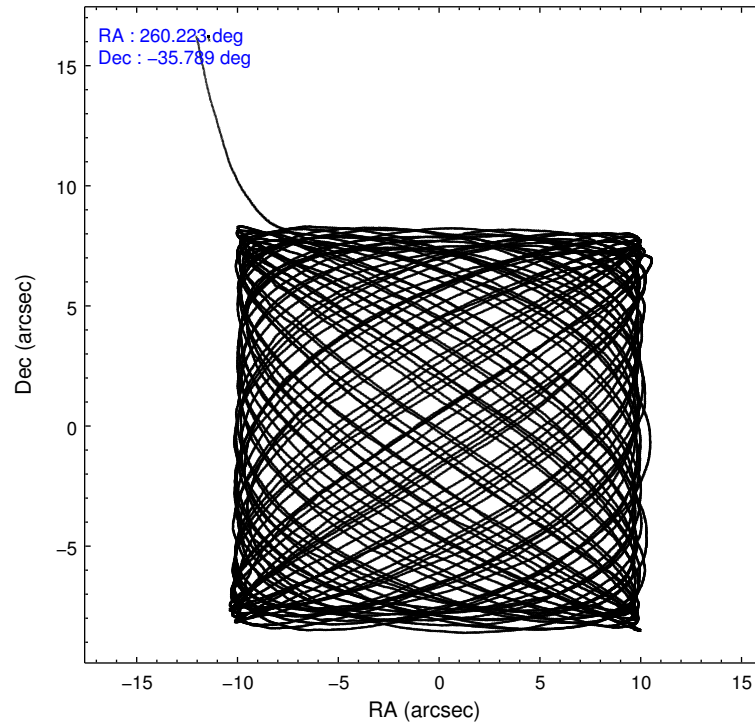
2.1.4 Events

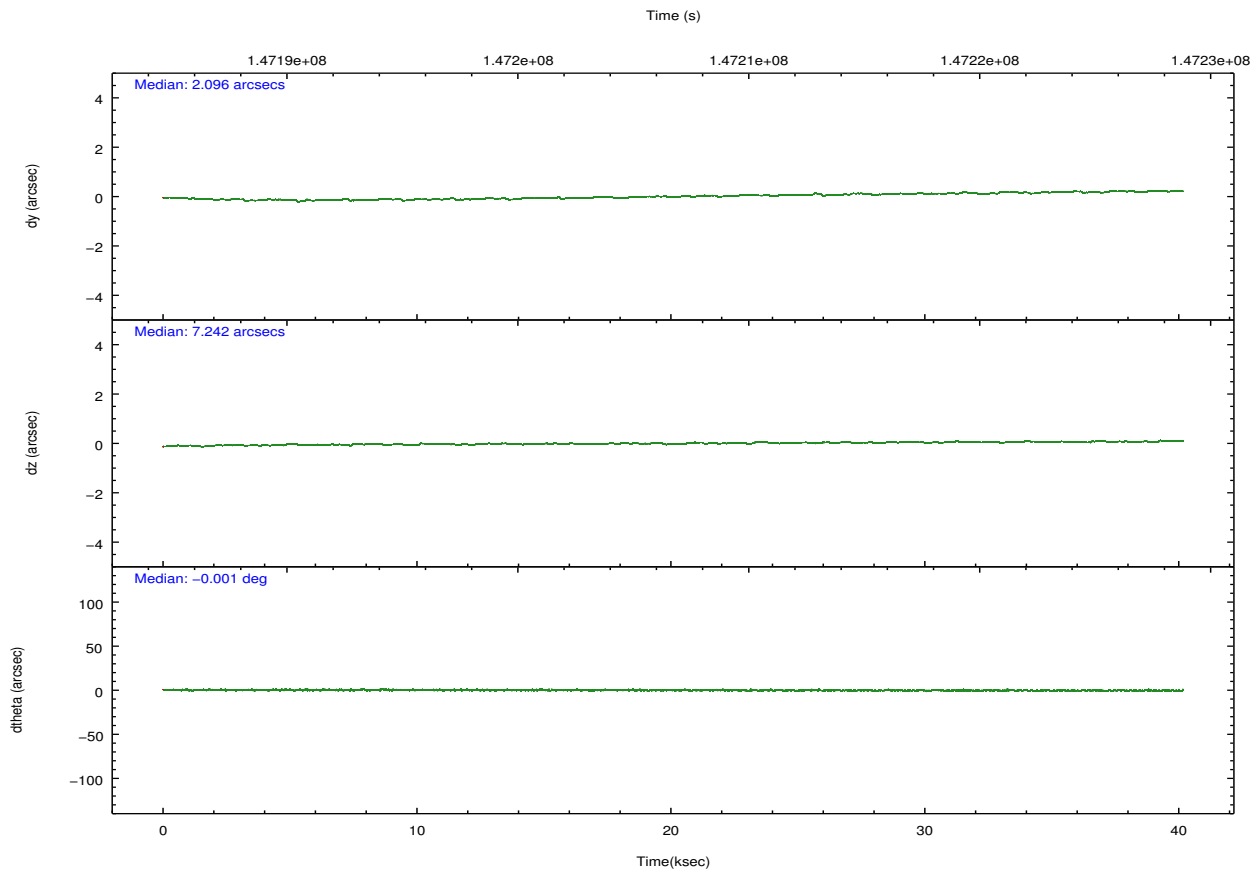
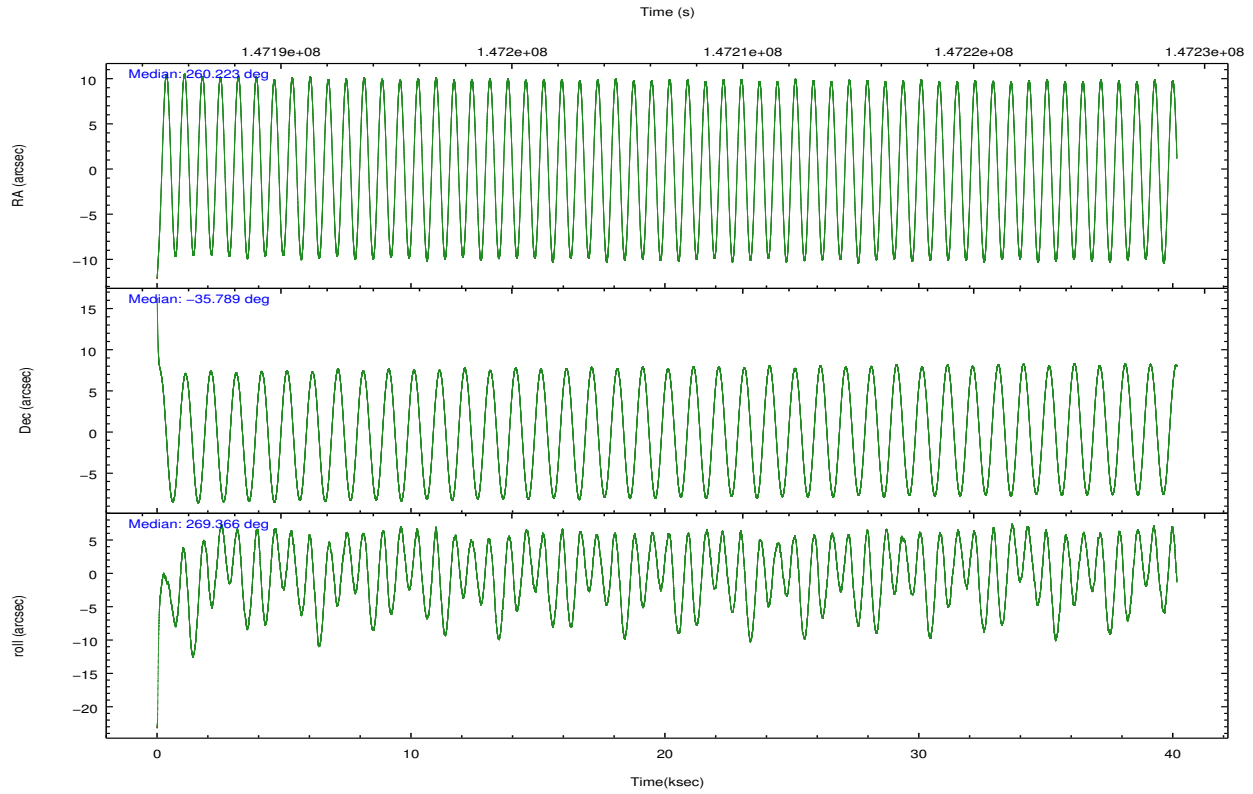
	ccd 0	ccd 1	ccd 2	ccd 3	ccd 6	ccd 7		ccd 0	ccd 1	ccd 2	ccd 3	ccd 6	ccd 7
level 1 events	246964	235720	246172	247989	256313	327207	grade 0 events	28218	18637	15160	15002	12459	12449
rejected events	197161	197415	214885	216902	226470	194189		11%	7%	6%	6%	4%	3%
rejected %	79%	83%	87%	87%	88%	59%	grade 1 events	213	138	155	175	144	283
								0%	0%	0%	0%	0%	0%
							grade 2 events	8789	7303	6214	5837	6228	26991
								3%	3%	2%	2%	2%	8%
							grade 3 events	3887	3438	2913	2915	2872	12276
								1%	1%	1%	1%	1%	3%
							grade 4 events	3471	3366	2826	2851	2855	12360
								1%	1%	1%	1%	1%	3%
							grade 5 events	9745	10074	9277	10704	11470	31406
								3%	4%	3%	4%	4%	9%
							grade 6 events	6141	6176	4789	5088	6019	71593
								2%	2%	1%	2%	2%	21%
							grade 7 events	186500	186588	204838	205417	214266	159849
								75%	79%	83%	82%	83%	48%

2.2 Compared Parameters

Parameter	Planned	Actual	Parameter	Planned	Actual
Instrument	ACIS	ACIS	Obspar format version number	7	7
Detector	ACIS-012367	ACIS-012367	Obspar file type	PREDICTED	ACTUAL
Grating	NONE	NONE	Obspar update status	NONE	UPDATED
Data mode	FAINT	FAINT	Number of optional ACIS chips dropped	0	0
Observation mode	POINTING	POINTING	On-chip summing requested	N	N
[deg] Pointing RA	260.206042	260.2227014462424	Subarray requested	NONE	NONE
[deg] Pointing Dec	-35.764881	-35.78870395044329	Alternating exposures requested	N	N
[deg] Pointing Roll	269.153567	269.3719875878303	[s] Primary exposure time	0.000000	3.2
[deg] Roll angle	270.000000	270.000000			
[deg] Roll tolerance	10.000000	10.000000			
Roll constraint allows 180D rotation	N	N			
[mm] SIM focus pos	-0.782348	-0.7809083437167272			
[mm] SIM defocus	0	0.001439871863259334			
[mm] SIM translation stage pos	-233.592463	-233.5874344608287			
[mm] SIM translation stage offset	0	-0.005018542100998502			
[s] Observation start time (MET)	147186805.184000	147185344.17769			
Observation start date	2002-08-31T13:12:21	2002-08-31T12:49:04			
[s] Observation end time (MET)	147226805.184000	147227440.41693			
Observation end date	2002-09-01T00:19:01	2002-09-01T00:30:40			
Read mode	TIMED	TIMED			

2.3 Aspect



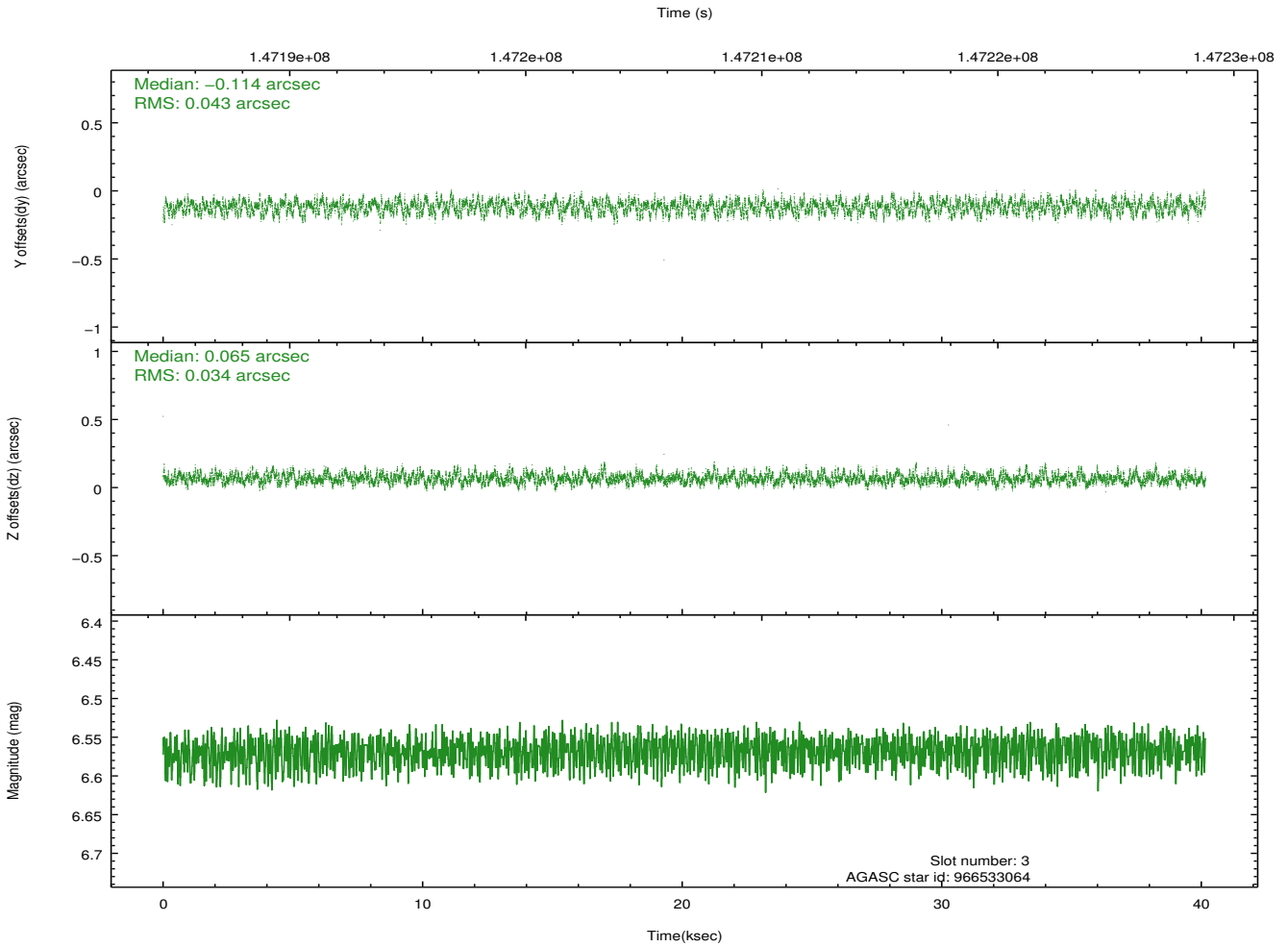
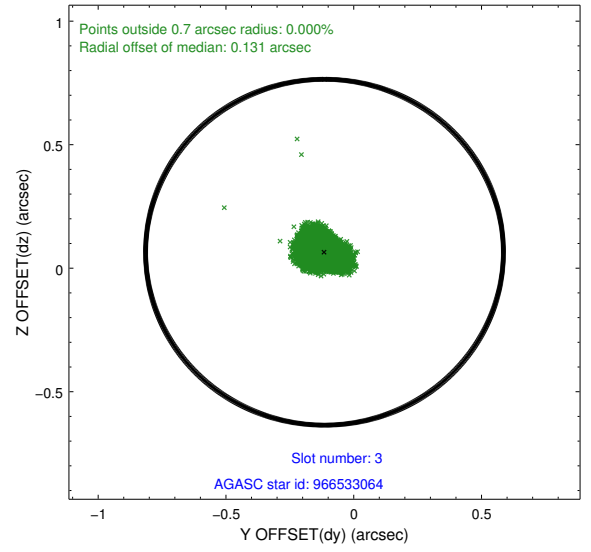
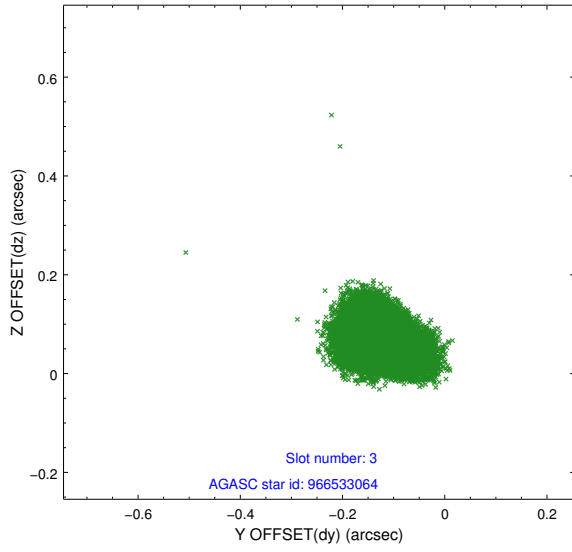


Slot Statistics

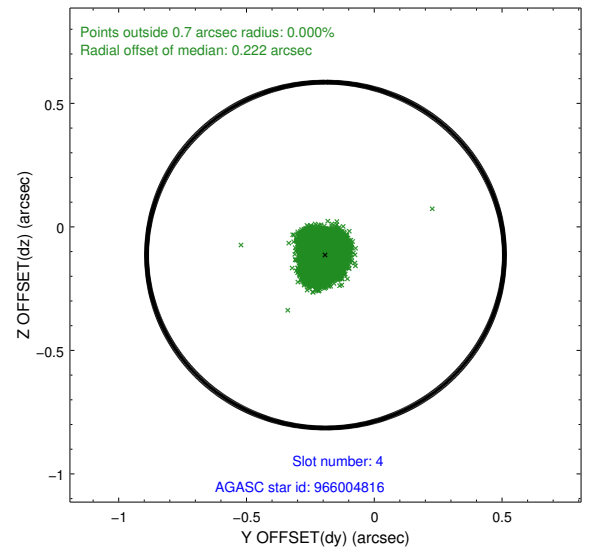
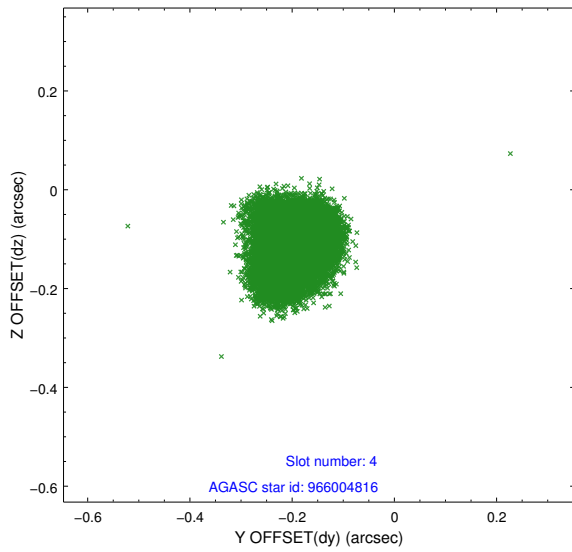
slot	status	id	mag	n_pts	med_dy	med_dz	dr1	dr2	ra	dec	mean_y	mean_z
0	FID	ACIS-I-1	7.25	9795	-0.003	0.026	0.006	0.011	0.000000	0.000000	937.68	-830.64
1	FID	ACIS-I-5	7.24	9794	-0.052	0.050	0.006	0.011	0.000000	0.000000	-1810.42	1066.93
2	FID	ACIS-I-6	7.26	9795	-0.036	-0.006	0.007	0.012	0.000000	0.000000	403.24	1711.35
3	GUIDE	966533064	6.57	19589	-0.114	0.065	0.059	0.093	260.658145	-35.910729	507.55	1326.67
4	GUIDE	966004816	7.81	19586	-0.191	-0.114	0.063	0.101	259.439637	-35.224167	-1904.82	-2282.10
5	GUIDE	966530056	8.23	19583	0.170	-0.084	0.056	0.088	259.659669	-36.086961	1187.01	-1571.77
6	GUIDE	966530288	9.15	19567	0.170	0.082	0.078	0.124	260.563512	-35.995883	817.63	1053.96
7	GUIDE	967709784	9.06	19583	-0.038	0.052	0.089	0.146	261.025089	-35.287716	-1744.00	2381.78

2.4 Star Slots

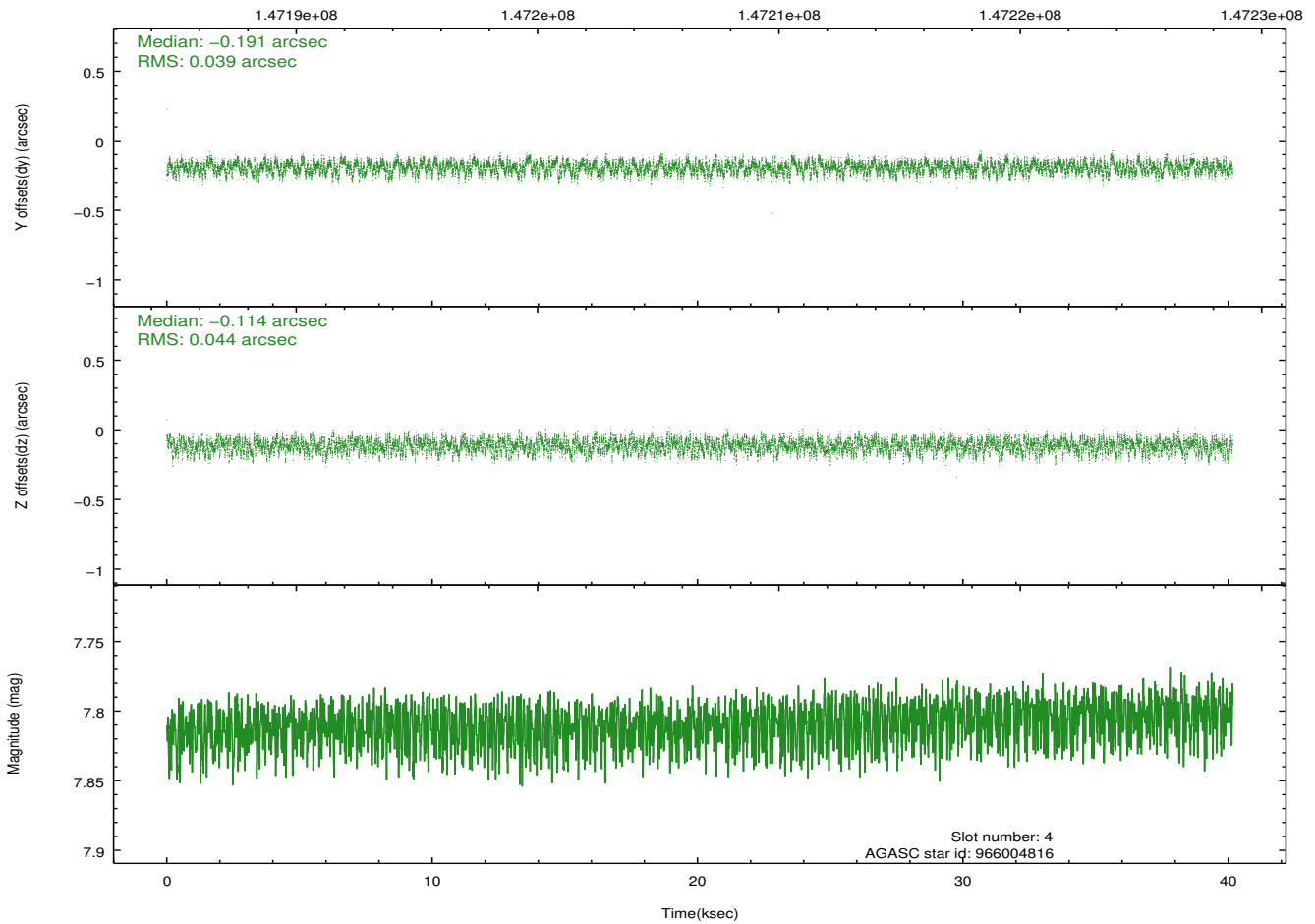
2.4.1 Slot 3



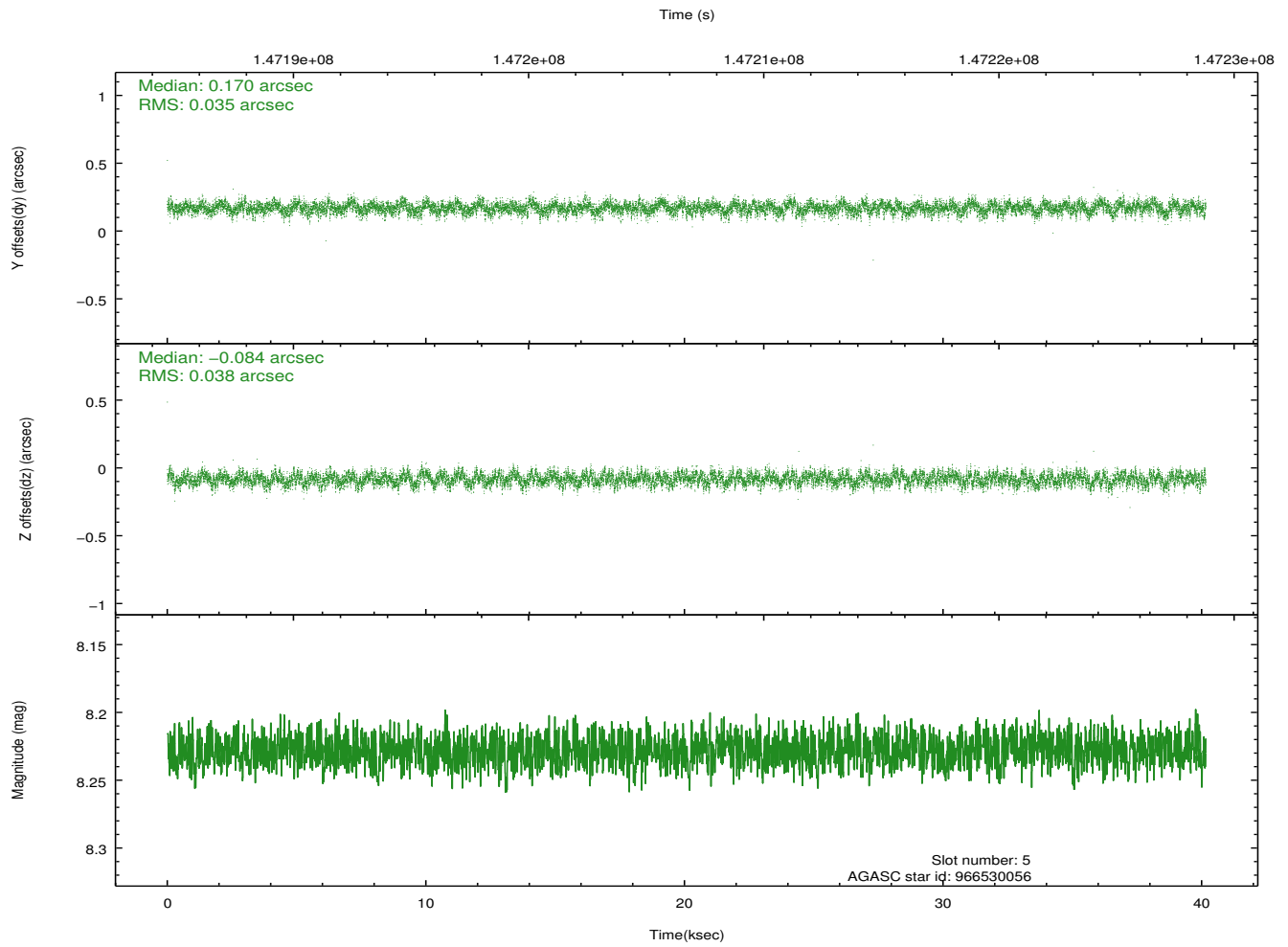
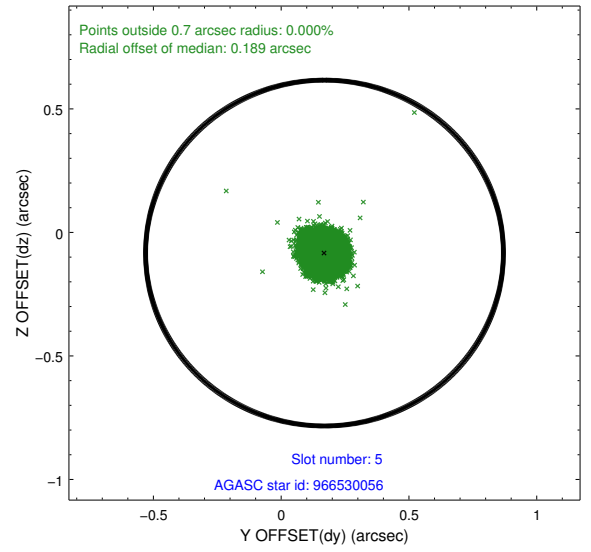
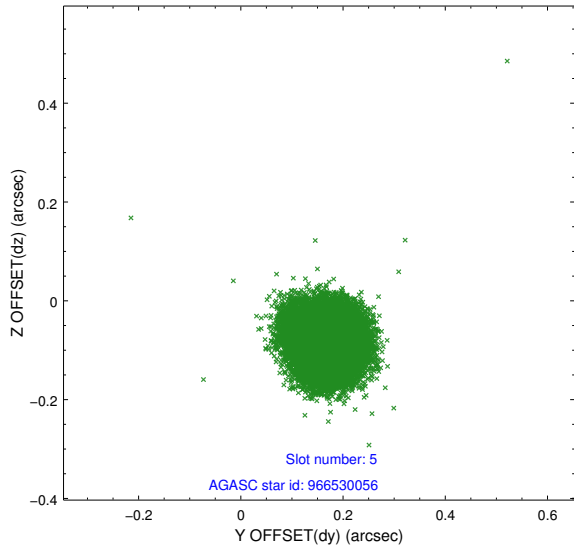
2.4.2 Slot 4



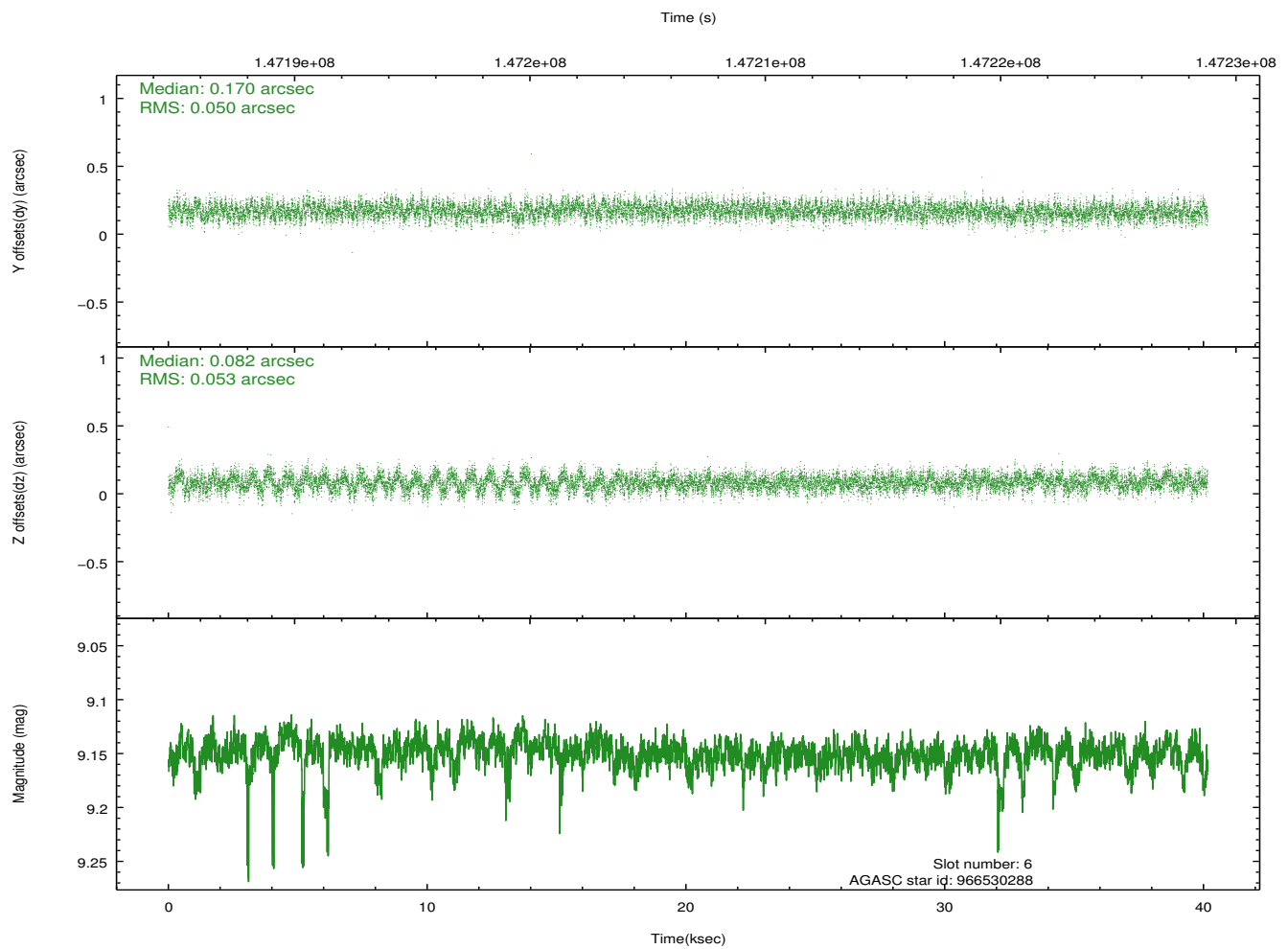
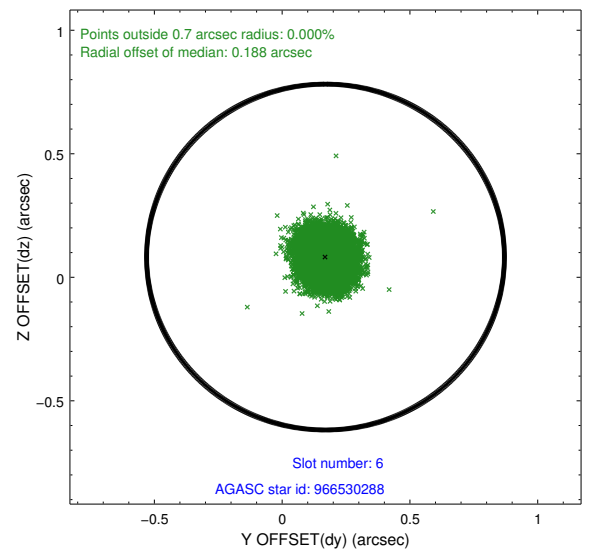
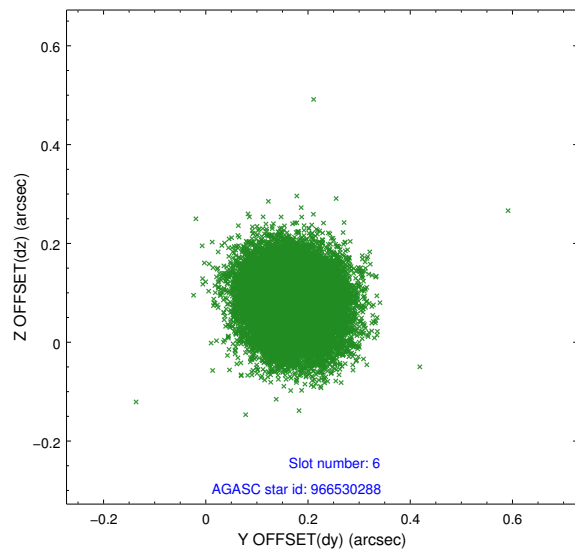
Time (s)



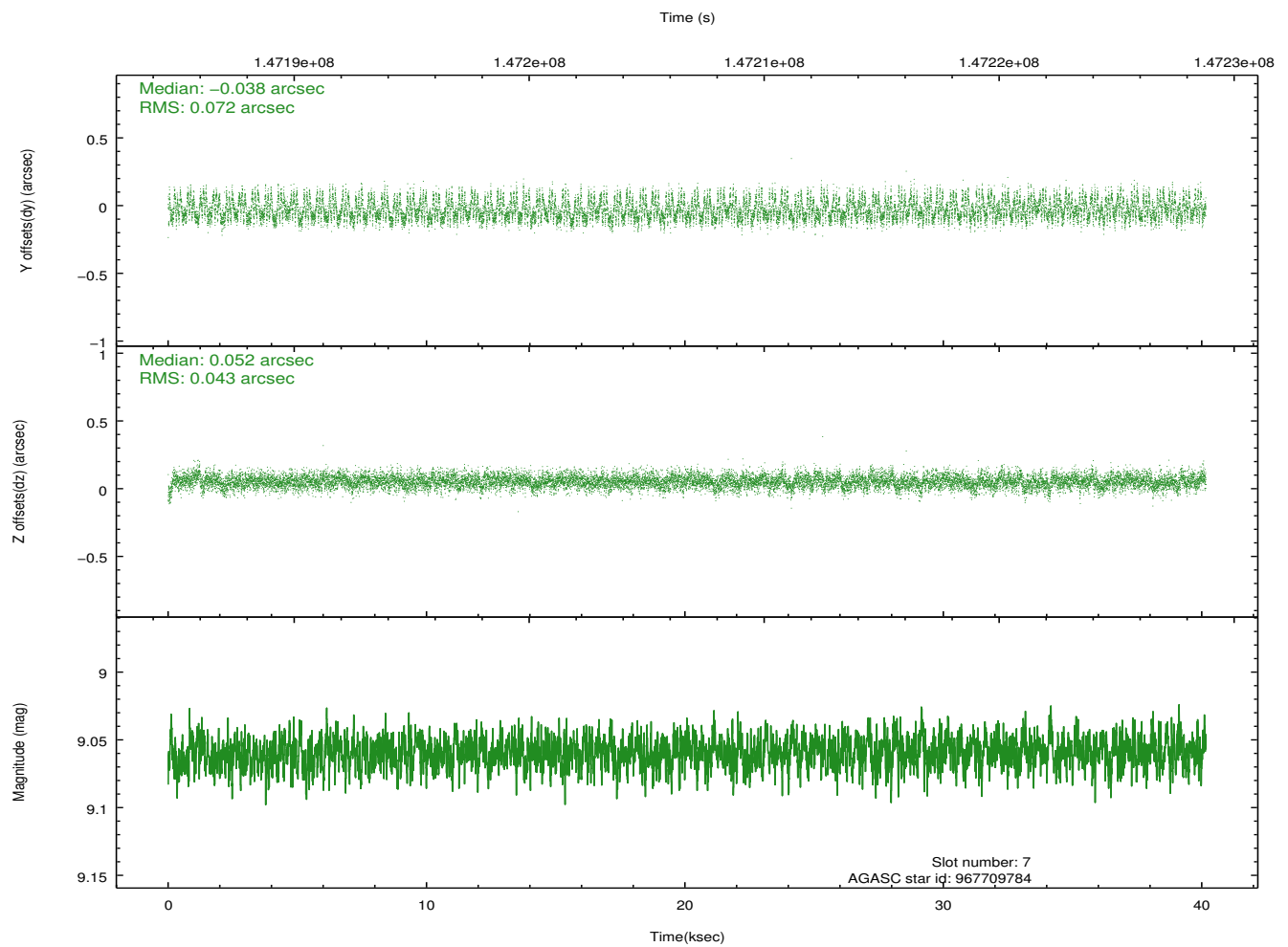
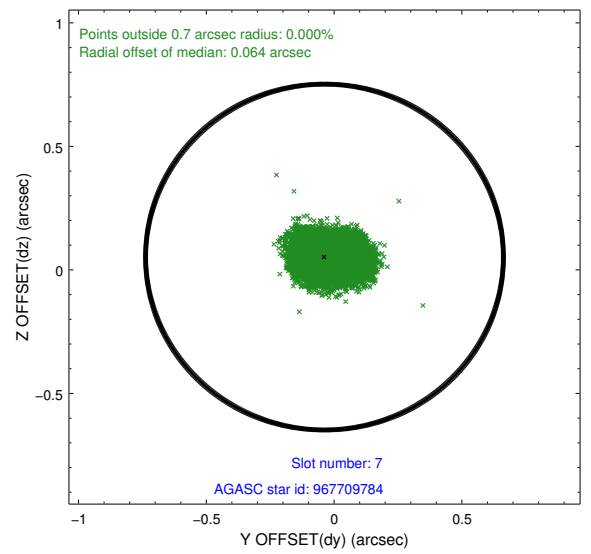
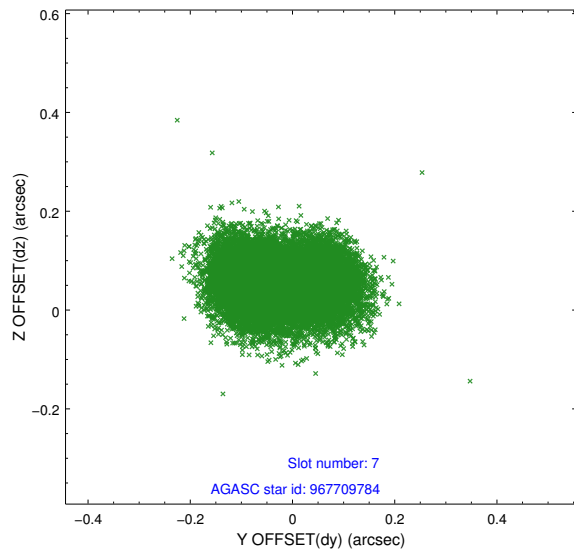
2.4.3 Slot 5



2.4.4 Slot 6

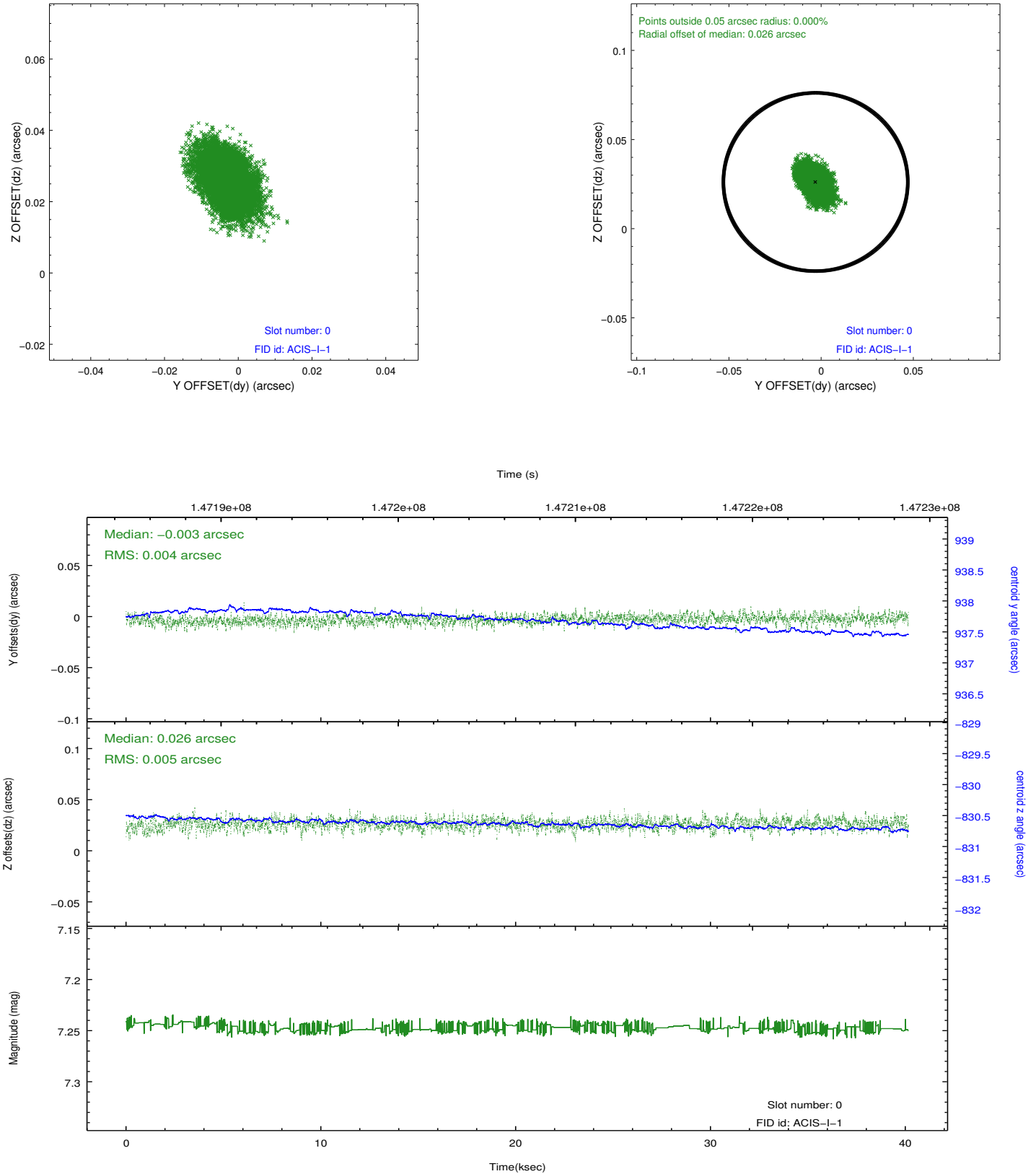


2.4.5 Slot 7

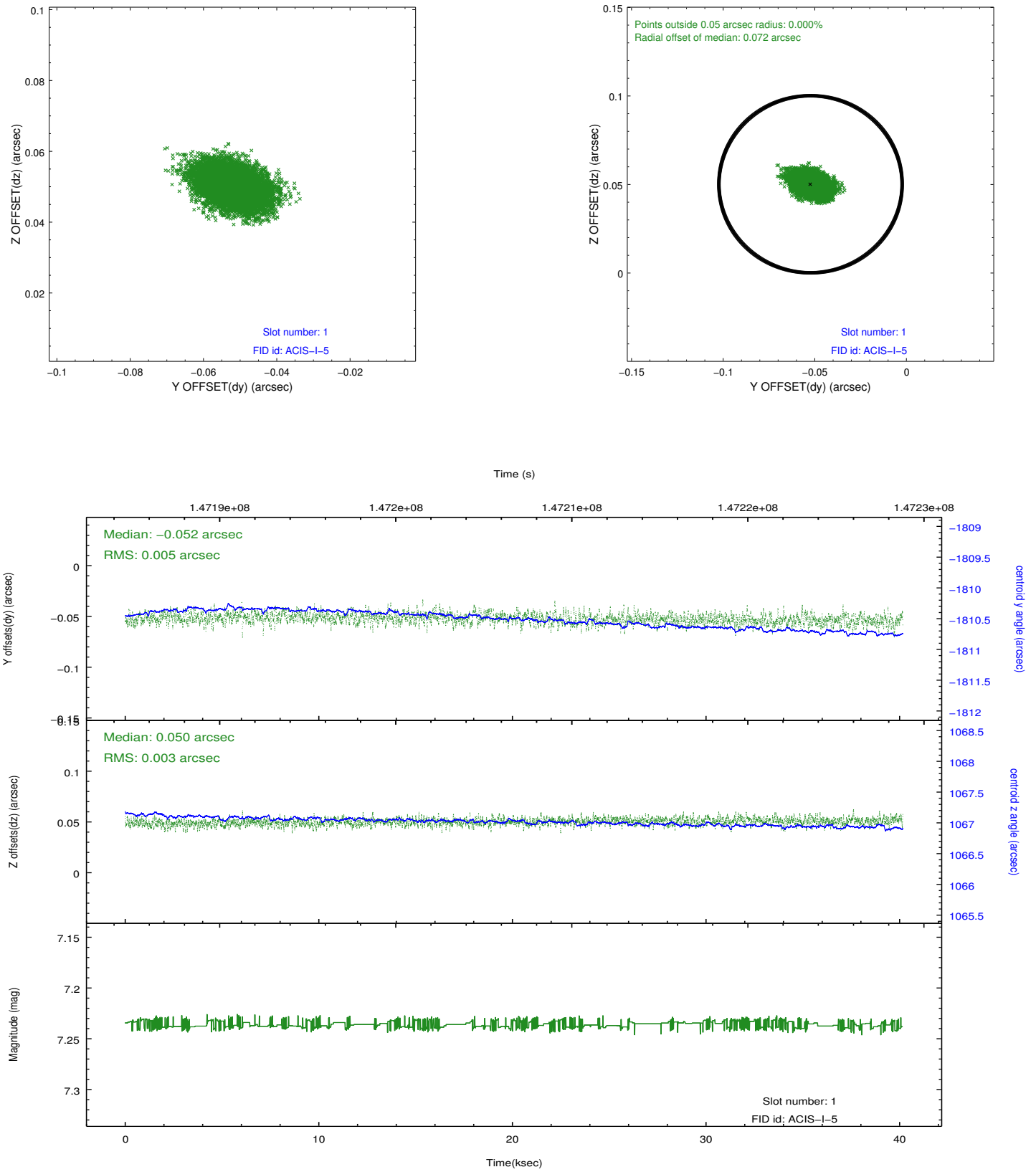


2.5 FID Slots

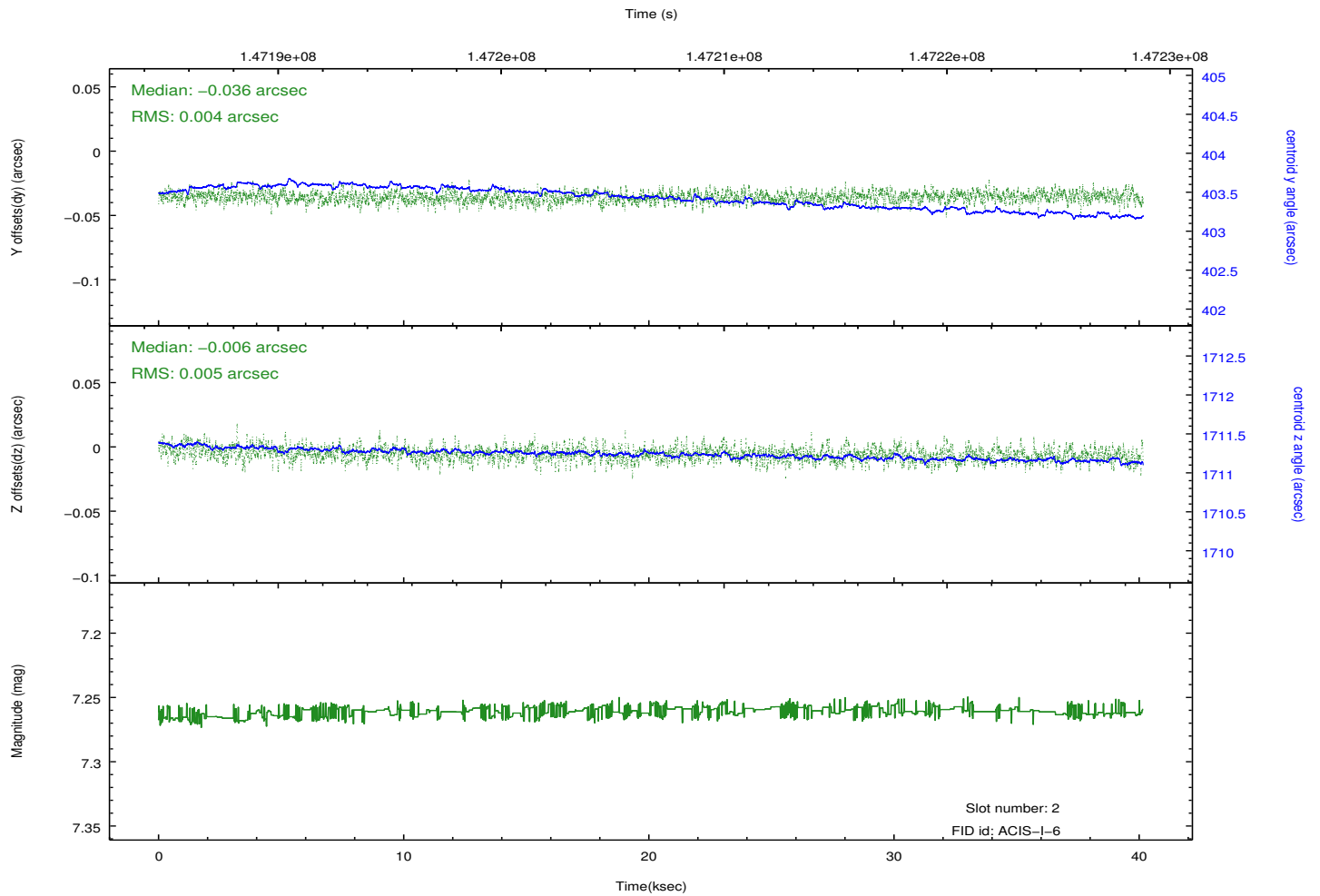
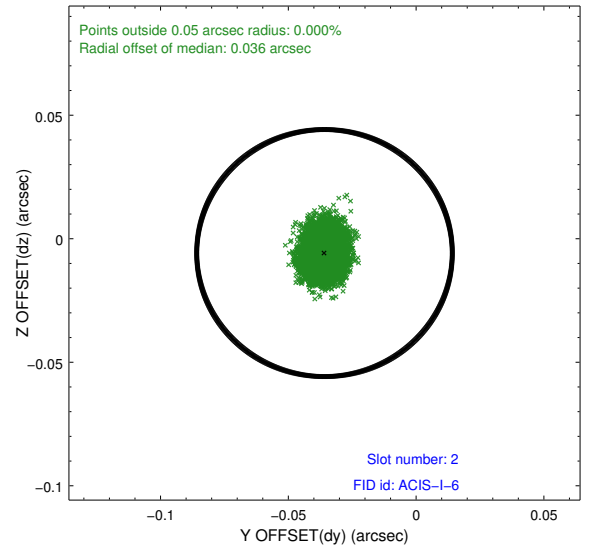
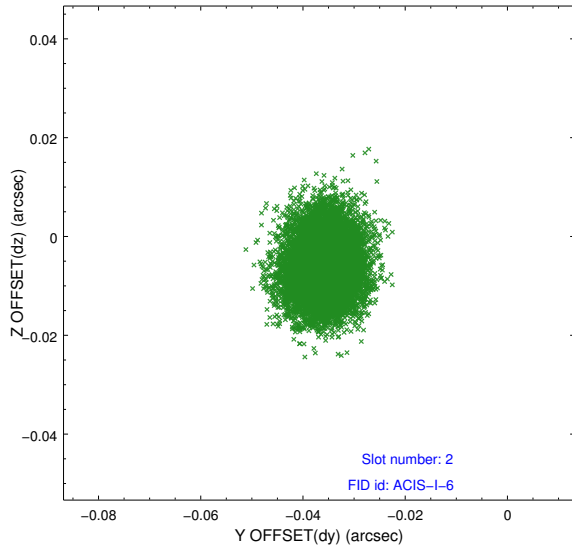
2.5.1 Slot 0



2.5.2 Slot 1



2.5.3 Slot 2



A Summary

A.1 Status

V&V Scientist	Jen Lauer
V&V Date (YYYY-MM-DD)	2012.10.22
V&V Edition	1
V&V Disposition and Status	OK
V&V Charge Time	40.156

A.2 Comments

Roll constraint met.