

V&V Reference Report

L2 ASCDS Version : 8.4.5

Observation 2714 - L2 Version 4
Chandra X-Ray Center

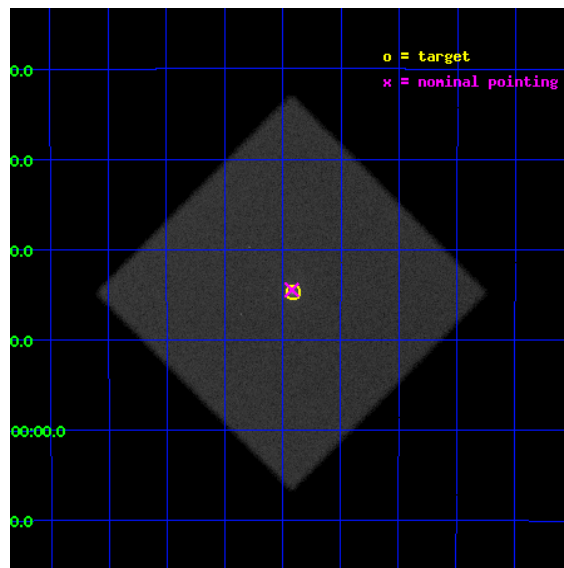
L2 Processing Date : Oct 3 2012

Contents

1	Front	2
2	OBI	3
2.1	OBI	3
2.1.1	Images	3
2.1.2	Parameters	4
2.1.3	Events	4
2.2	Compared Parameters	5
2.3	Aspect	6
2.4	Star Slots	9
2.4.1	Slot 3	9
2.4.2	Slot 4	10
2.4.3	Slot 5	11
2.4.4	Slot 6	12
2.4.5	Slot 7	13
2.5	FID Slots	14
2.5.1	Slot 0	14
2.5.2	Slot 1	15
2.5.3	Slot 2	16
A	Summary	17
A.1	Status	17
A.2	Comments	17

1 Front

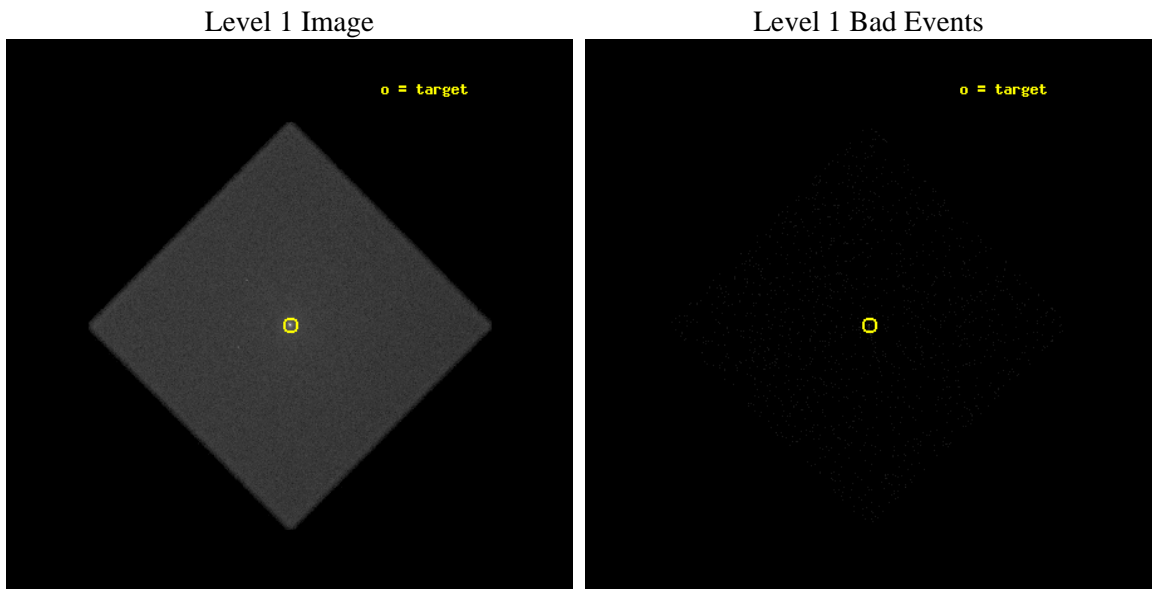
seq_num	400194	Sequence number
obs_id	2714	Observation id
title	MONITORING THE MORPHOLOGY OF THE MICRO-QUASARS GRS 1758-258 AND 1E 1740.7-2942	Proposal title
observer	Dr. William Heindl	Principal investigator
object	1E 1740.7-2942	Source name
ra_targ	265.978333	Observer's specified target RA [deg]
dec_targ	-29.745222	Observer's specified target Dec [deg]
ra_nom	265.98024552667	Nominal RA [deg]
dec_nom	-29.741310863139	Nominal Dec [deg]
roll_nom	89.955344039146	Nominal Roll [deg]
revision	4	Processing version of data
ontime	29871.832457975	[s]
livetime	29709.801313094	Ontime multiplied by DTCOR
l2events	841981	Number of level 2 events



2 OBI

2.1 OBI

2.1.1 Images



2.1.2 Parameters

obi_num	0	Obi number	sched_exp_time	30000.000000	[s] Scheduled observation exposure time
ascdsver	8.4.5	Processing system revision	ontime	29871.832457975	[s]
caldbver	4.5.2	 	l1events	1264124	Number of level 1 events
date	2012-10-03T03:33:23	Date and time of file creation			
revision	4	Processing version of data			

2.1.3 Events

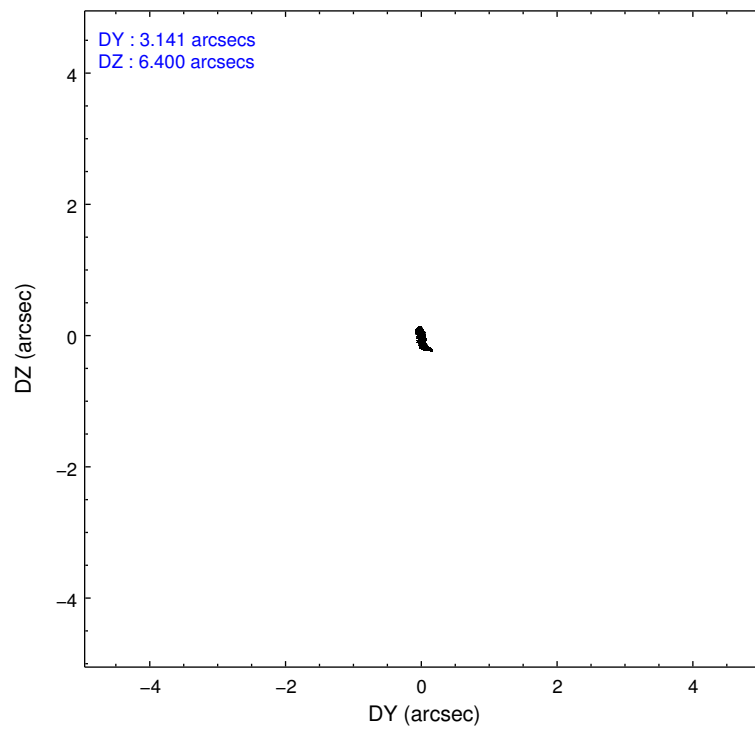
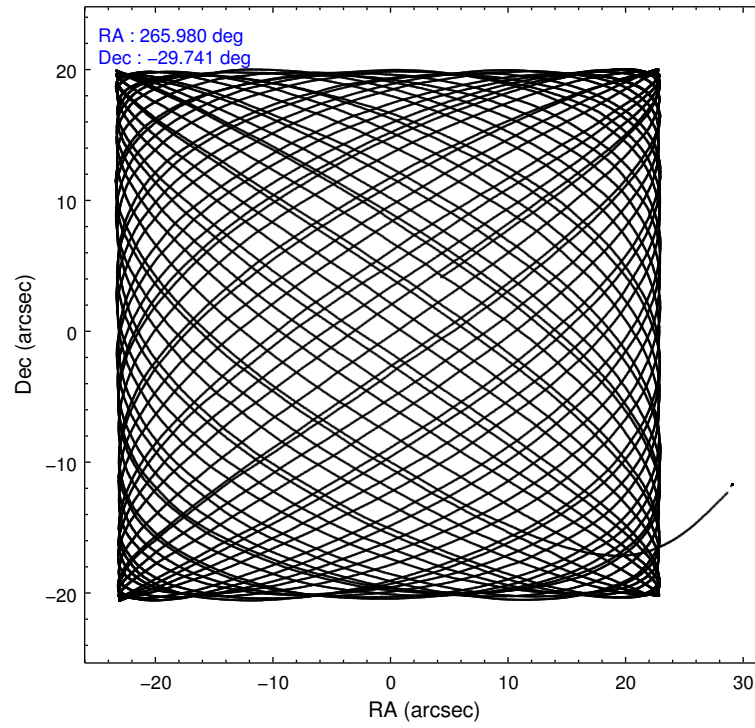
Level 1 Events

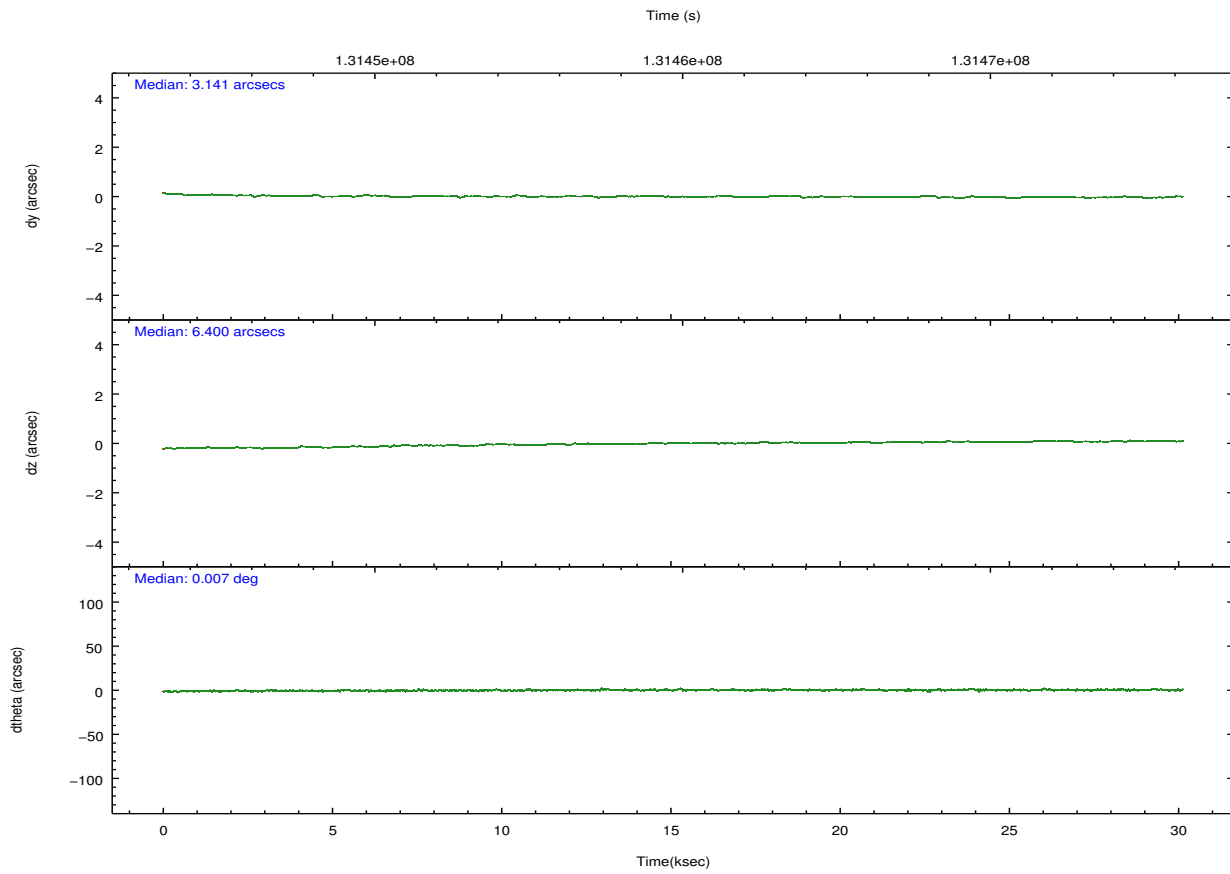
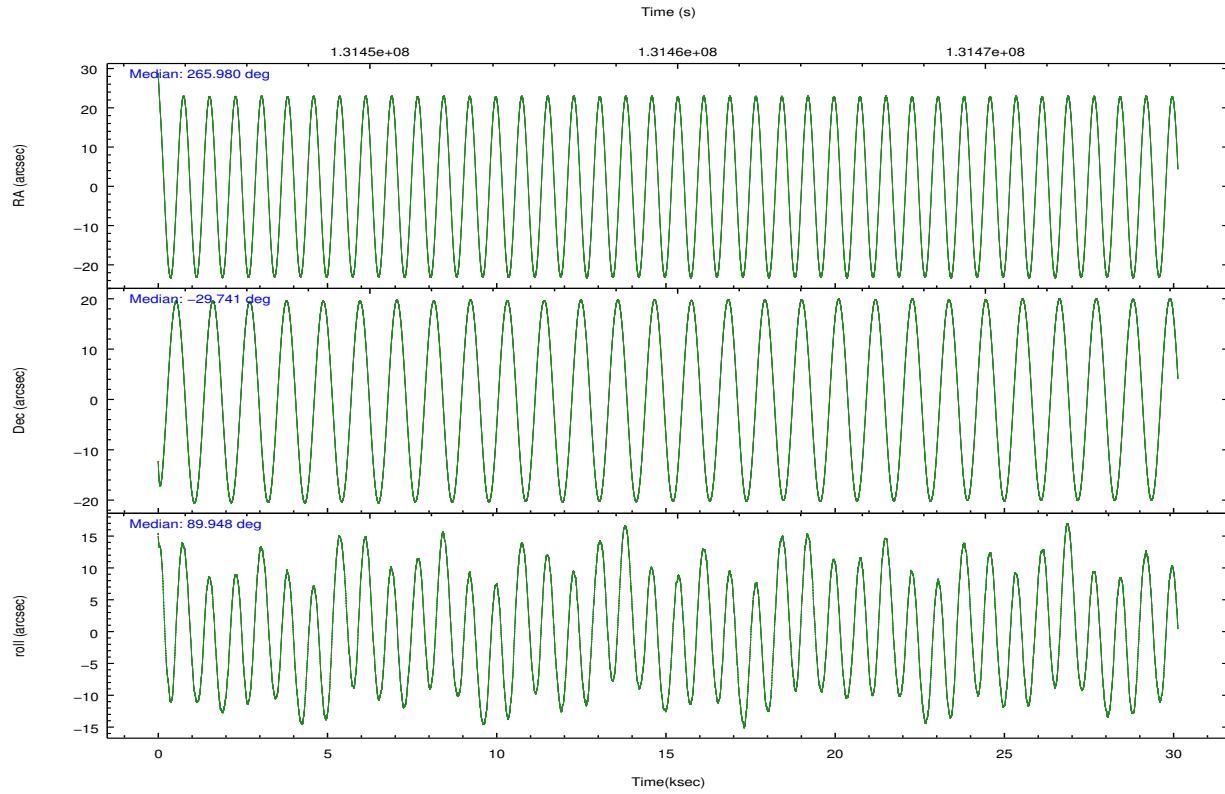
	segment 0
level 1 events	1264124
rejected events	13265
rejected %	1%

2.2 Compared Parameters

Parameter	Planned	Actual	Parameter	Planned	Actual
Instrument	HRC	HRC	Obspar format version number	7	7
Detector	HRC-I	HRC-I	Obspar file type	PREDICTED	ACTUAL
Grating	NONE	NONE	Obspar update status	NONE	UPDATED
Data mode	OBSERVING	OBSERVING			
Observation mode	POINTING	POINTING			
[deg] Pointing RA	265.996398	265.9802455266741			
[deg] Pointing Dec	-29.764537	-29.741310863139			
[deg] Pointing Roll	90.058854	89.95534403914576			
[mm] SIM focus pos	-1.040293	-1.038866356238299			
[mm] SIM defocus	0	0.001426264420575141			
[mm] SIM translation stage pos	126.985494	126.9829799899862			
[mm] SIM translation stage offset	0	0.002508901615314585			
[s] Observation start time (MET)	131444752.184000	131444050.55947			
Observation start date	2002-03-02T08:24:48	2002-03-02T08:14:10			
[s] Observation end time (MET)	131474752.184000	131475039.89823			
Observation end date	2002-03-02T16:44:48	2002-03-02T16:50:39			

2.3 Aspect



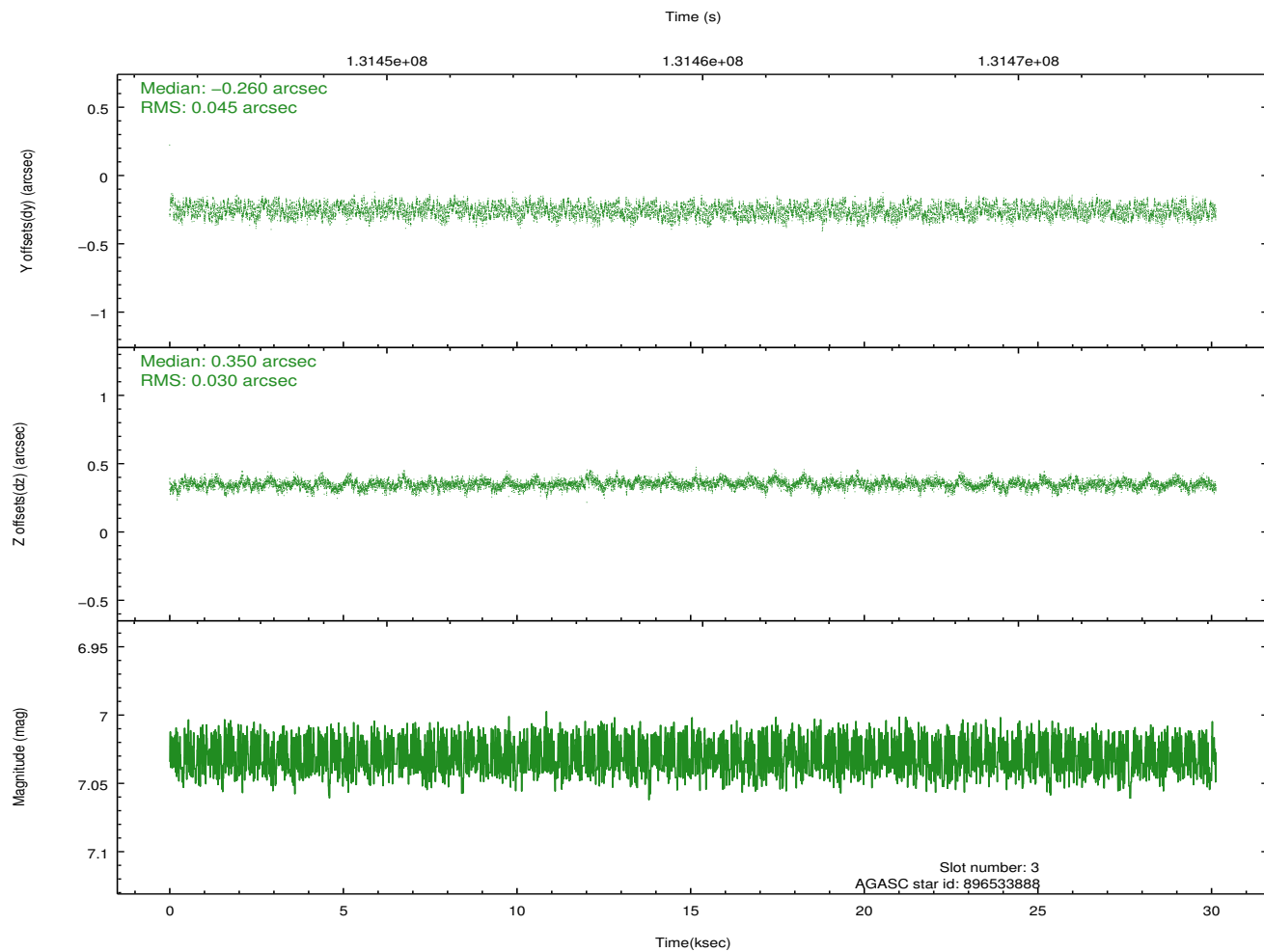
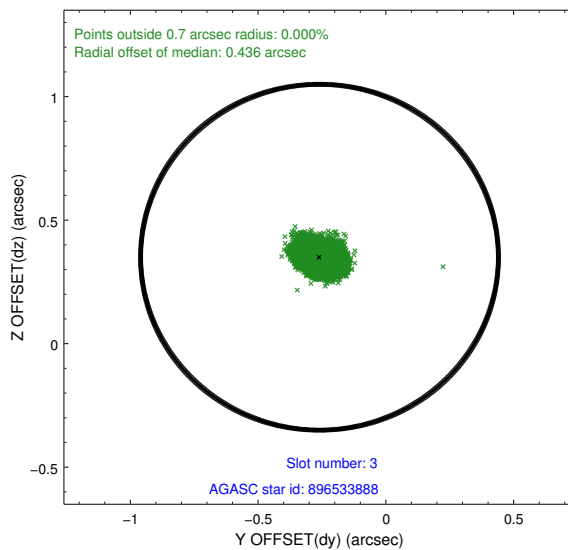
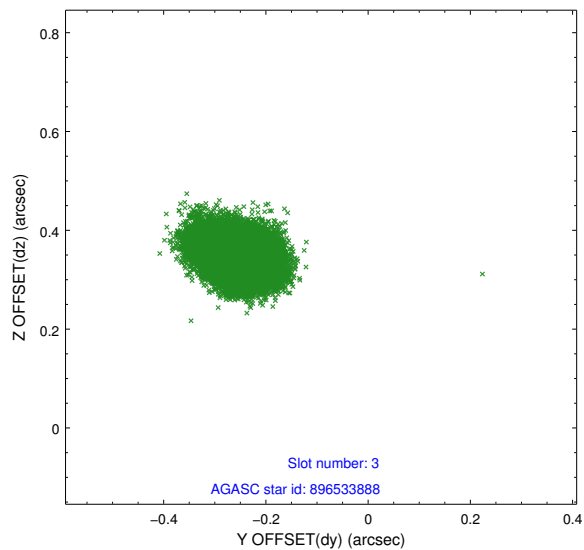


Slot Statistics

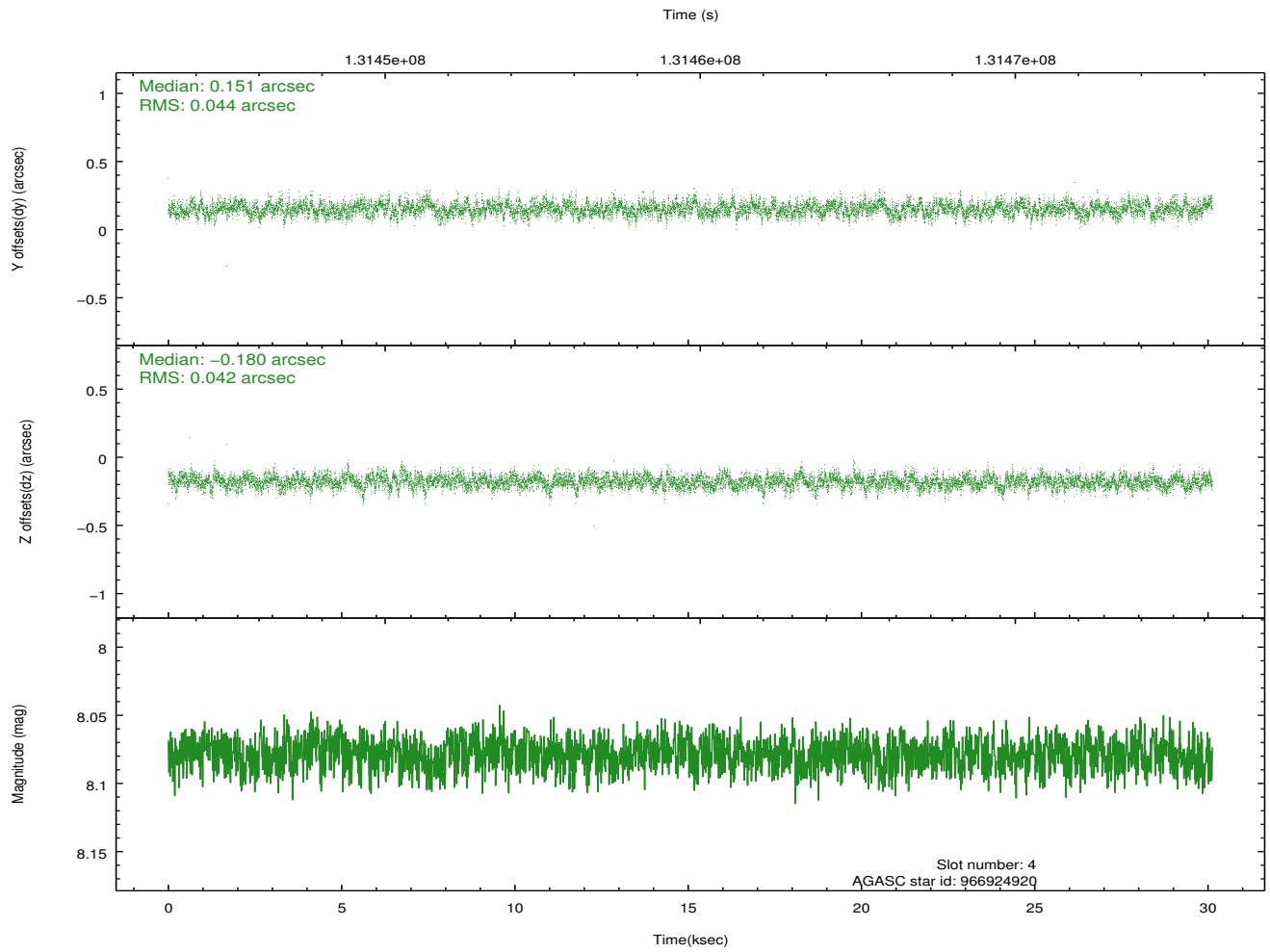
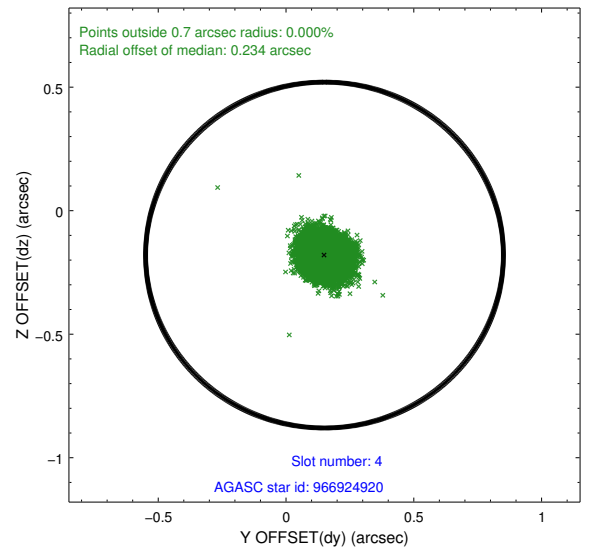
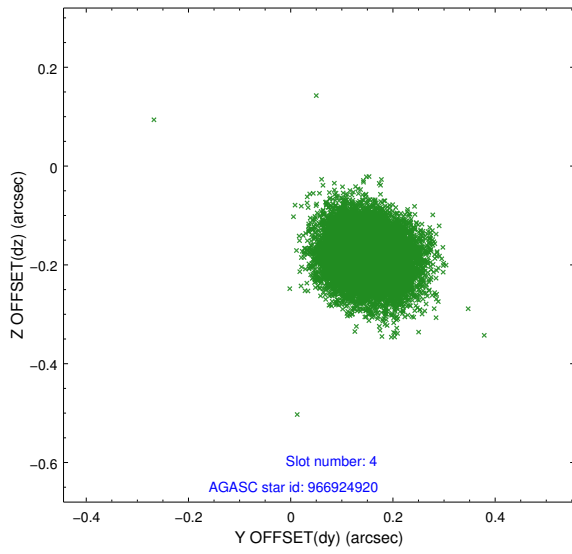
slot	status	id	mag	n_pts	med_dy	med_dz	dr1	dr2	ra	dec	mean_y	mean_z
0	FID	HRC-I-1	6.97	7350	0.023	0.008	0.008	0.014	0.000000	0.000000	-758.57	-1294.21
1	FID	HRC-I-2	7.01	7349	0.058	-0.040	0.007	0.012	0.000000	0.000000	853.99	-1295.97
2	FID	HRC-I-3	7.06	7349	0.038	-0.057	0.006	0.011	0.000000	0.000000	-1186.97	1010.10
3	GUIDE	896533888	7.03	14699	-0.260	0.350	0.059	0.091	266.666434	-29.392757	1330.77	-2102.85
4	GUIDE	966924920	8.08	14698	0.151	-0.180	0.065	0.105	265.875401	-30.176961	-1483.79	377.25
5	GUIDE	896544544	8.67	14692	0.042	0.234	0.082	0.134	266.707391	-29.885740	-444.71	-2218.87
6	GUIDE	896404784	9.35	14688	-0.138	-0.104	0.101	0.158	265.491289	-29.092670	2417.05	1586.36
7	GUIDE	966791536	9.35	14630	0.200	-0.302	0.108	0.172	265.423122	-30.013043	-896.50	1787.43

2.4 Star Slots

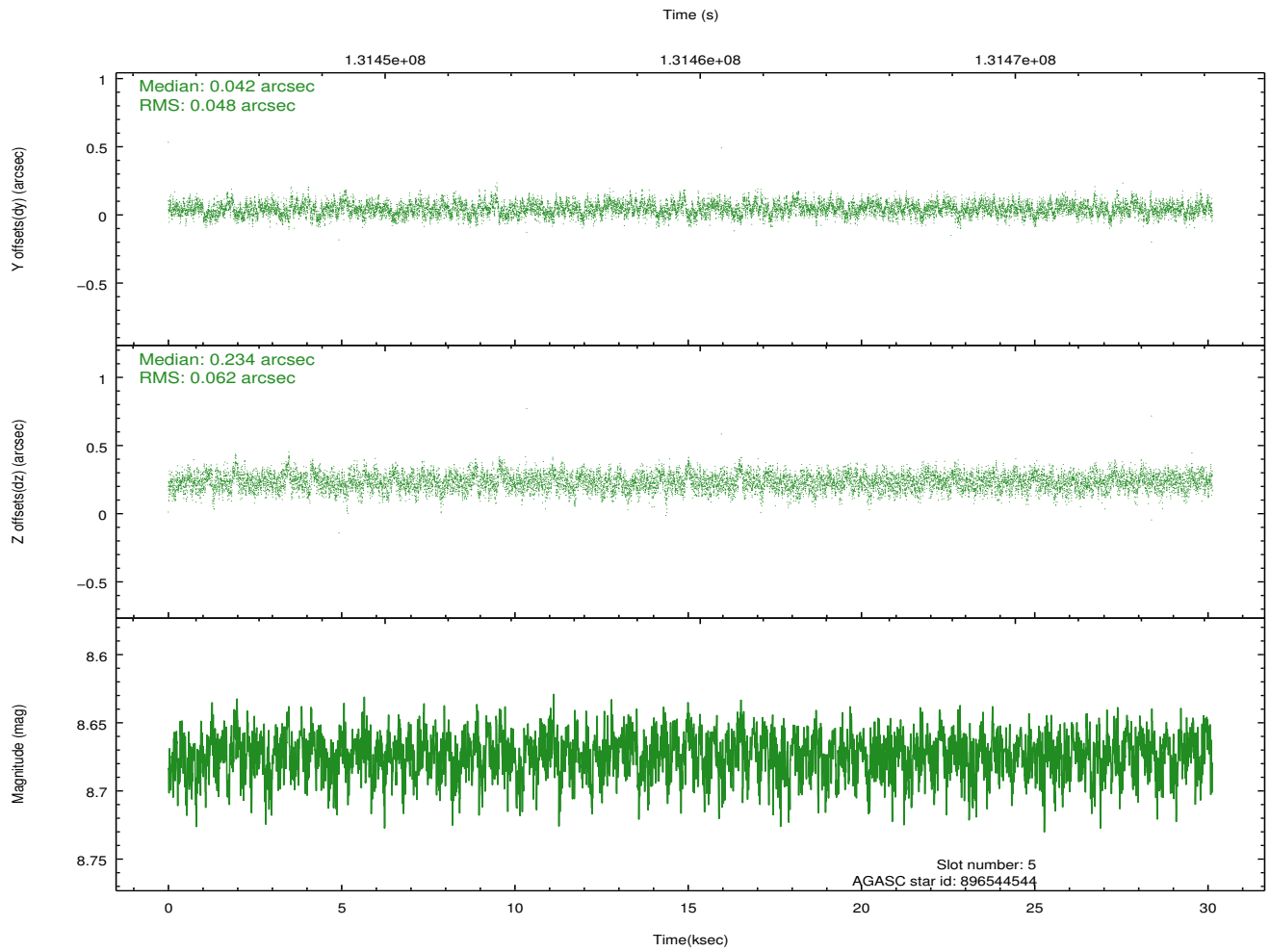
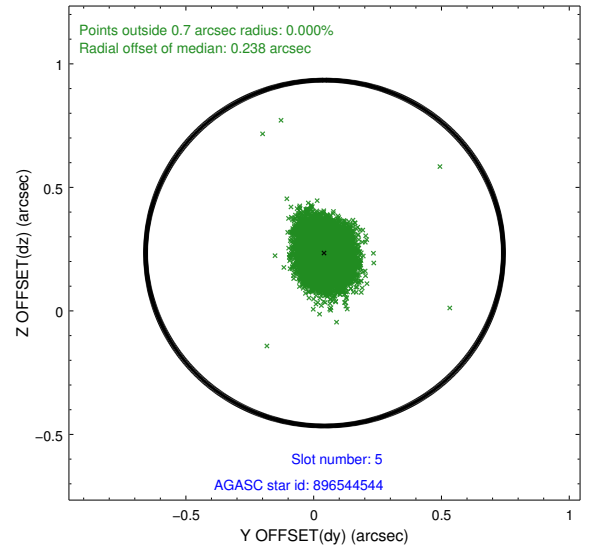
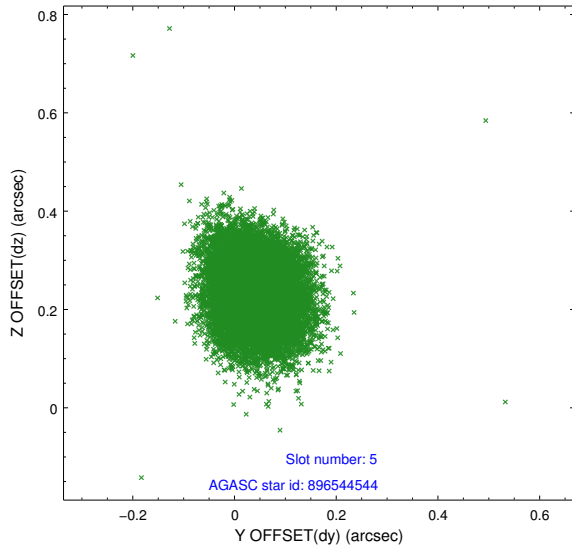
2.4.1 Slot 3



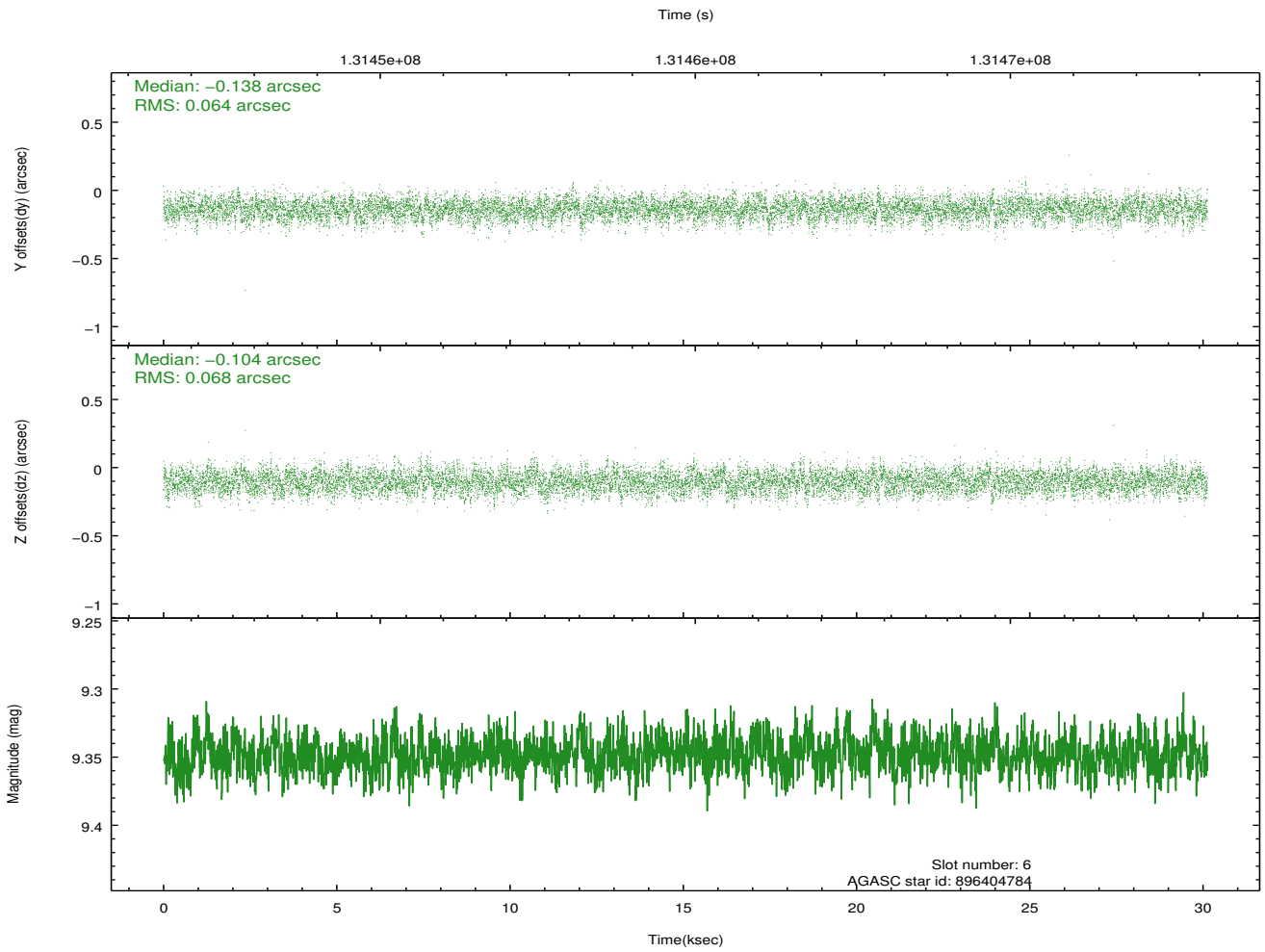
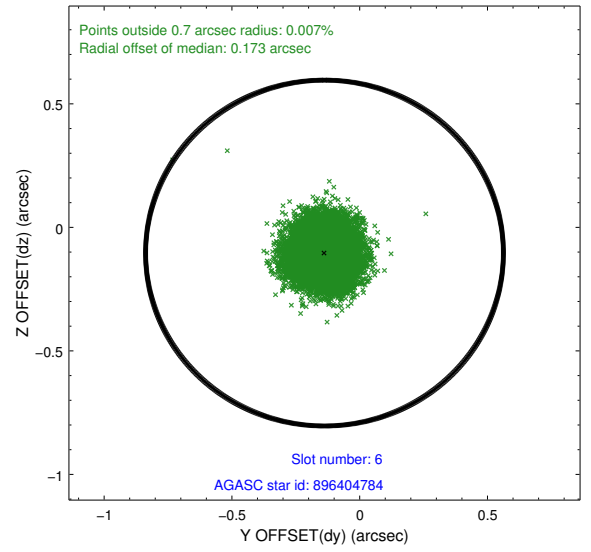
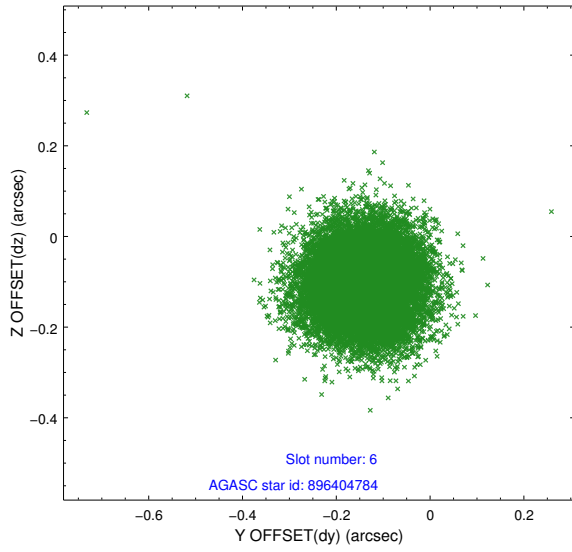
2.4.2 Slot 4



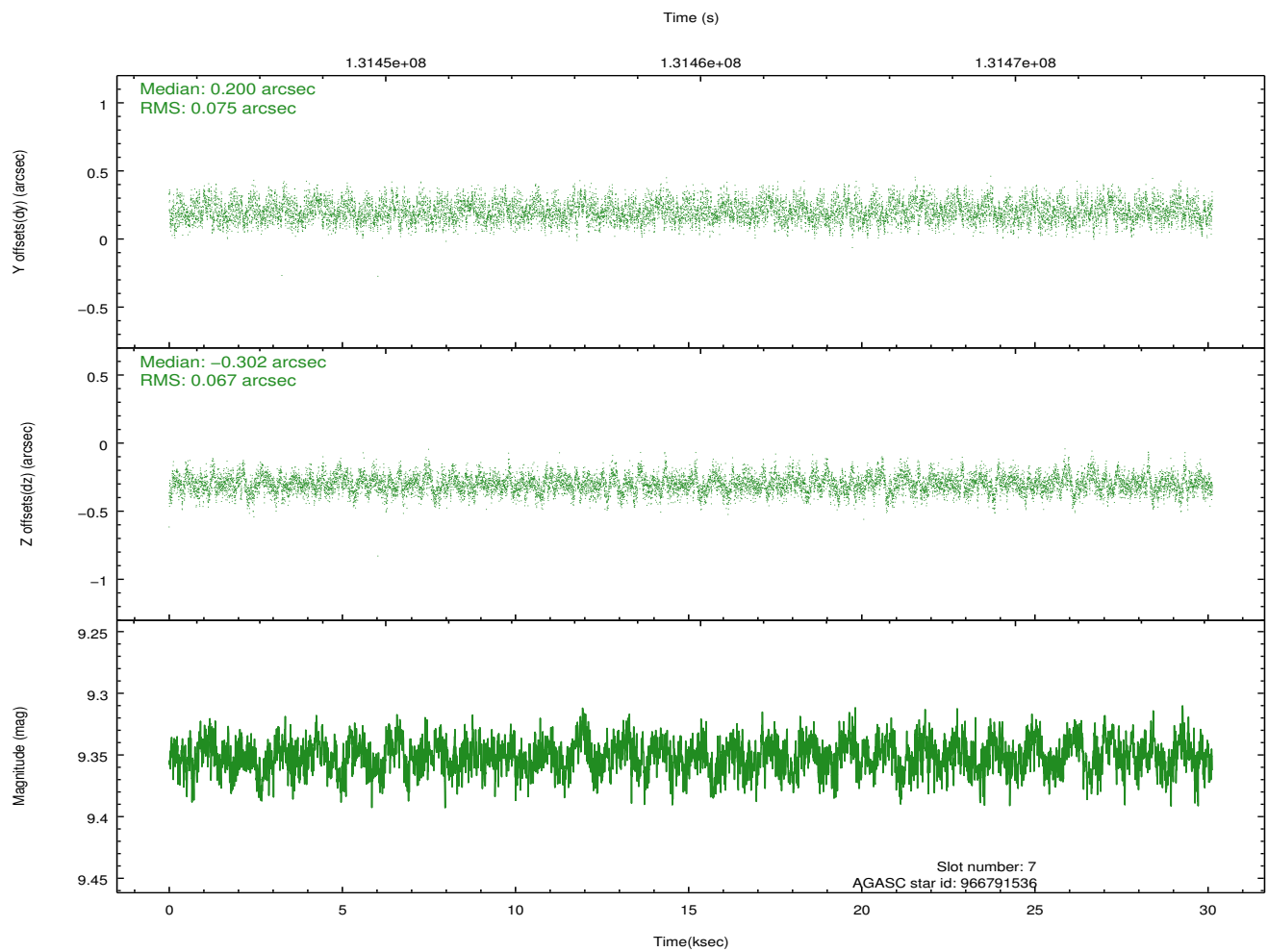
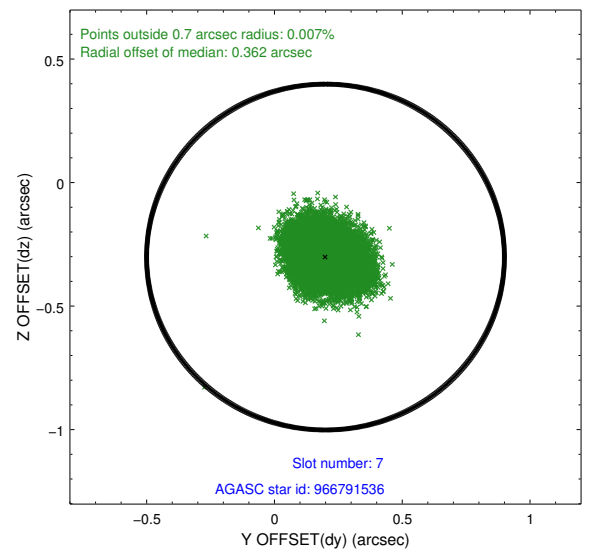
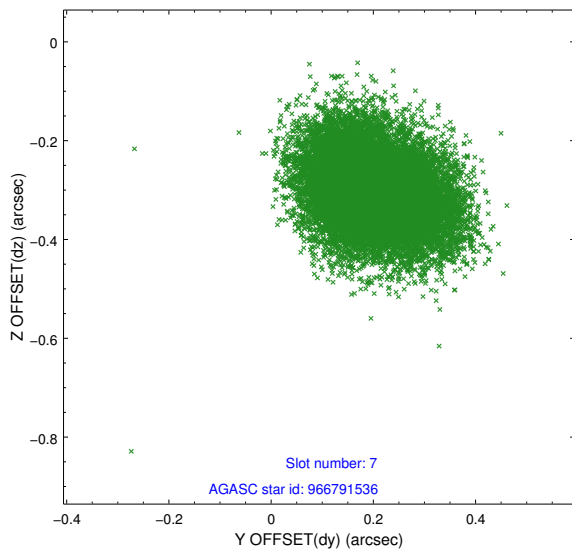
2.4.3 Slot 5



2.4.4 Slot 6

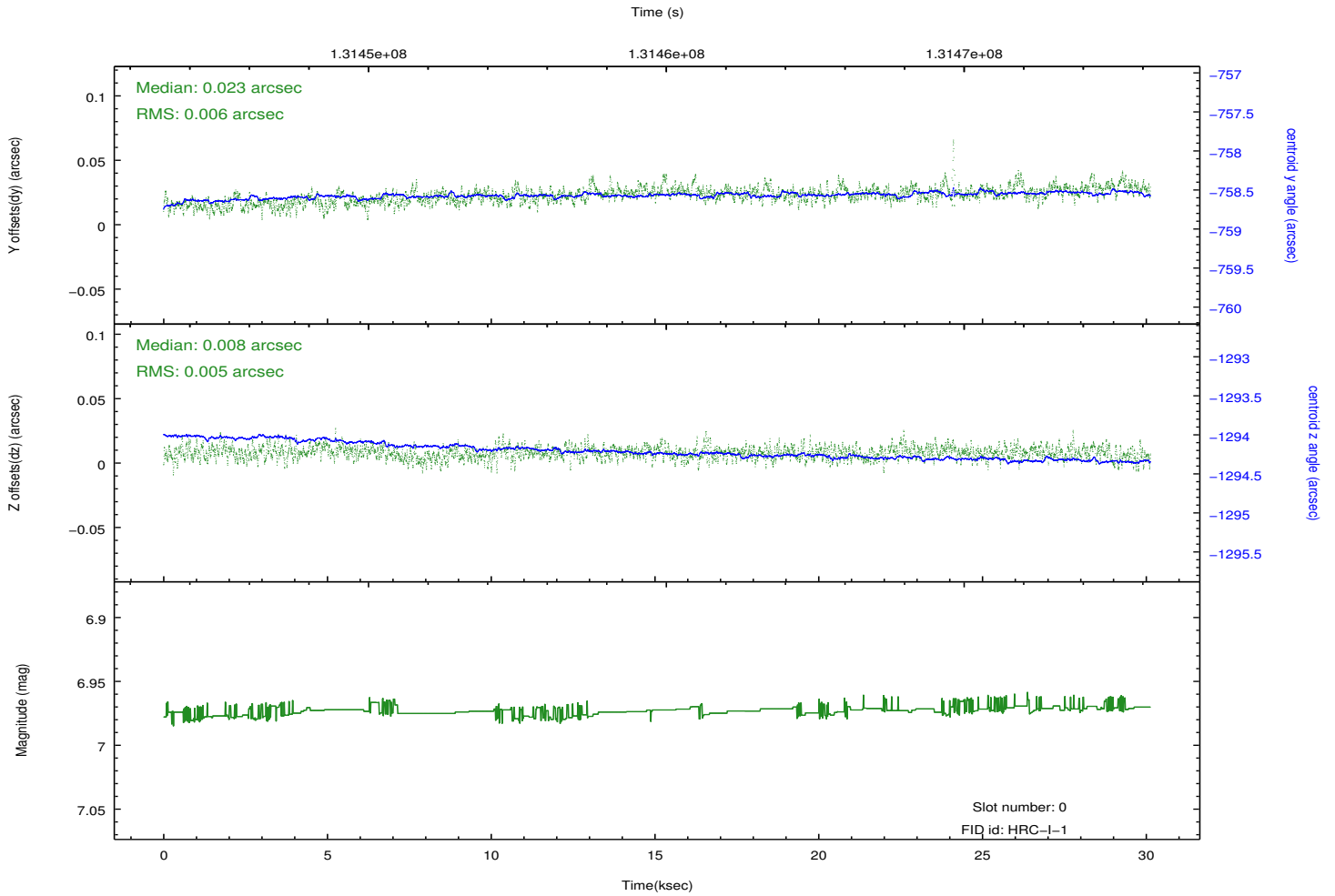
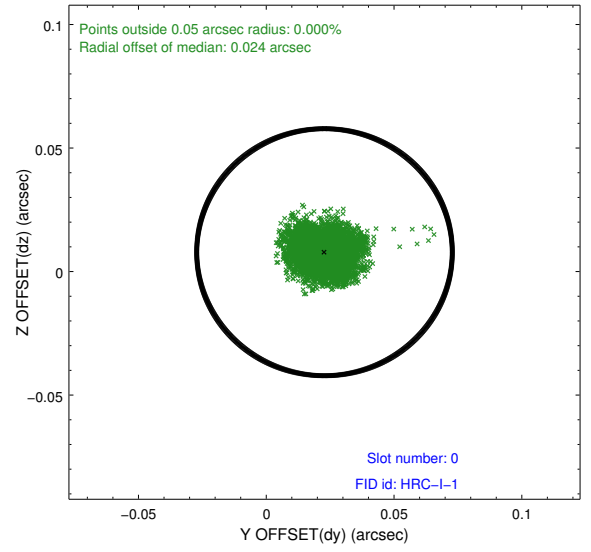
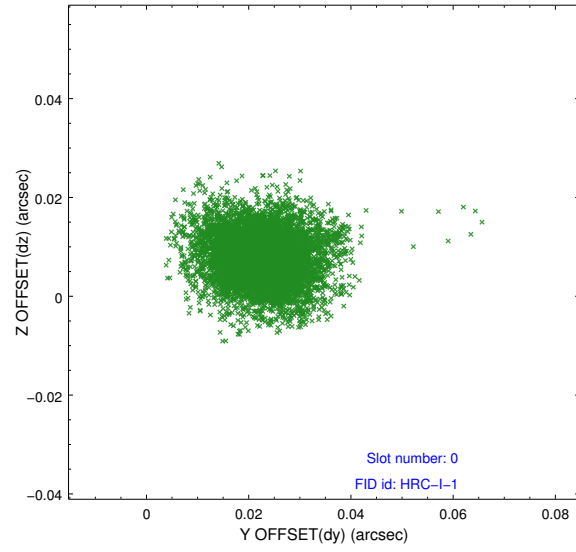


2.4.5 Slot 7

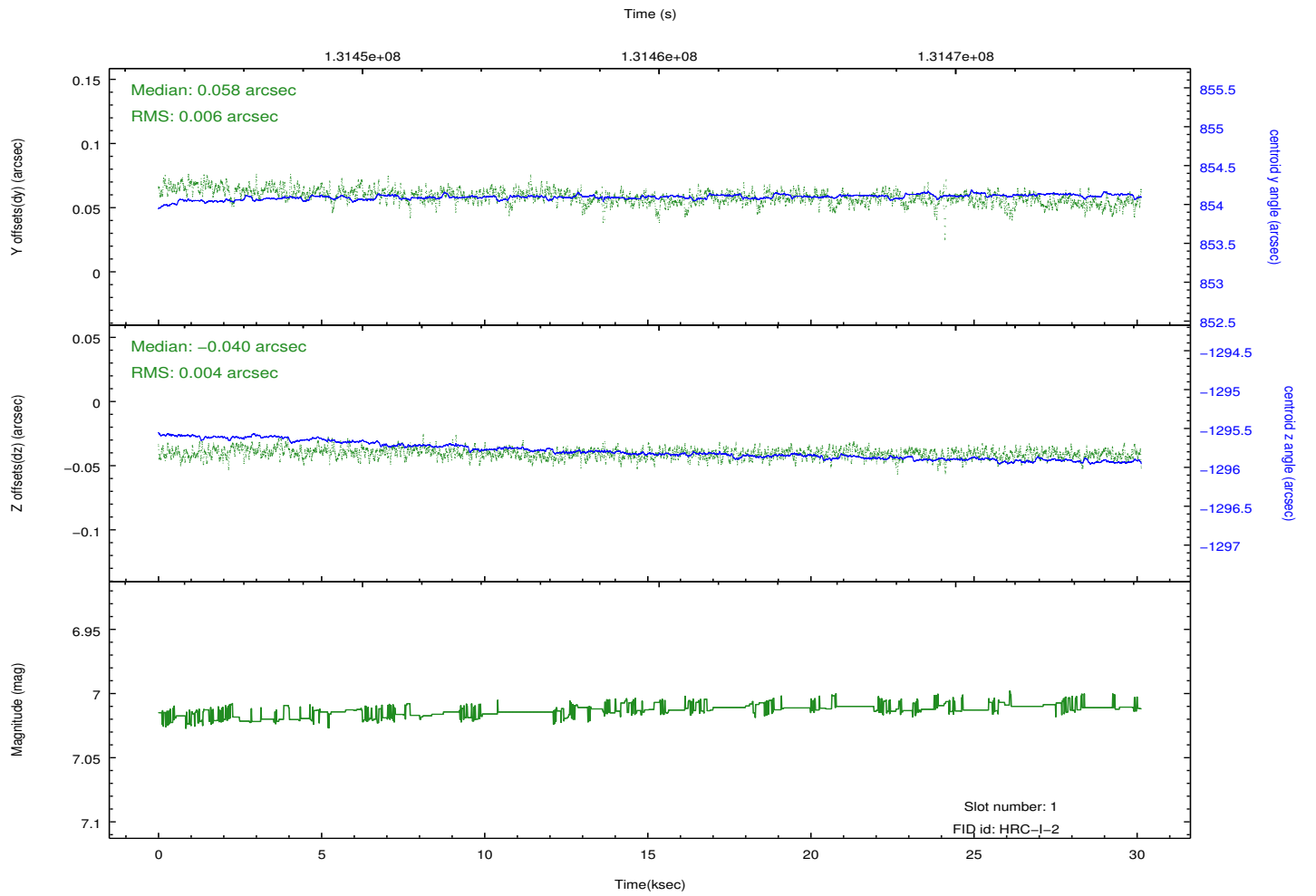
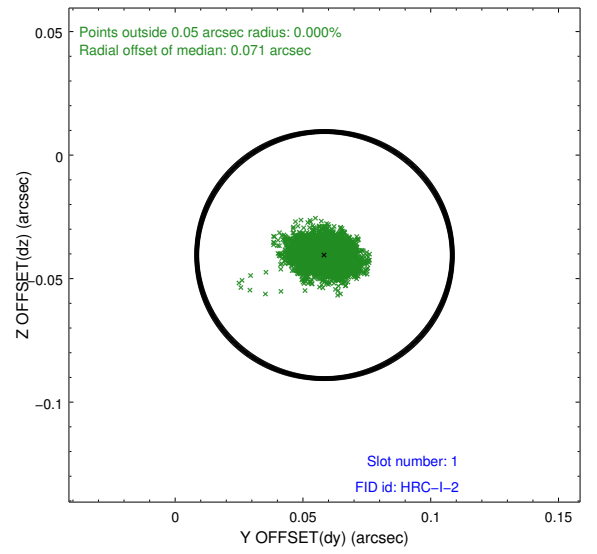
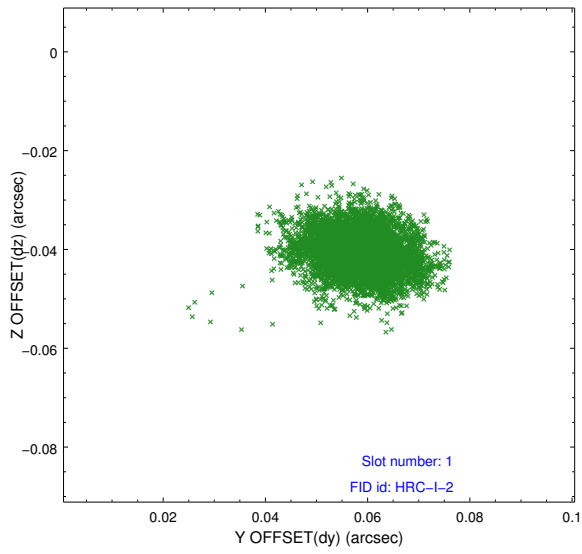


2.5 FID Slots

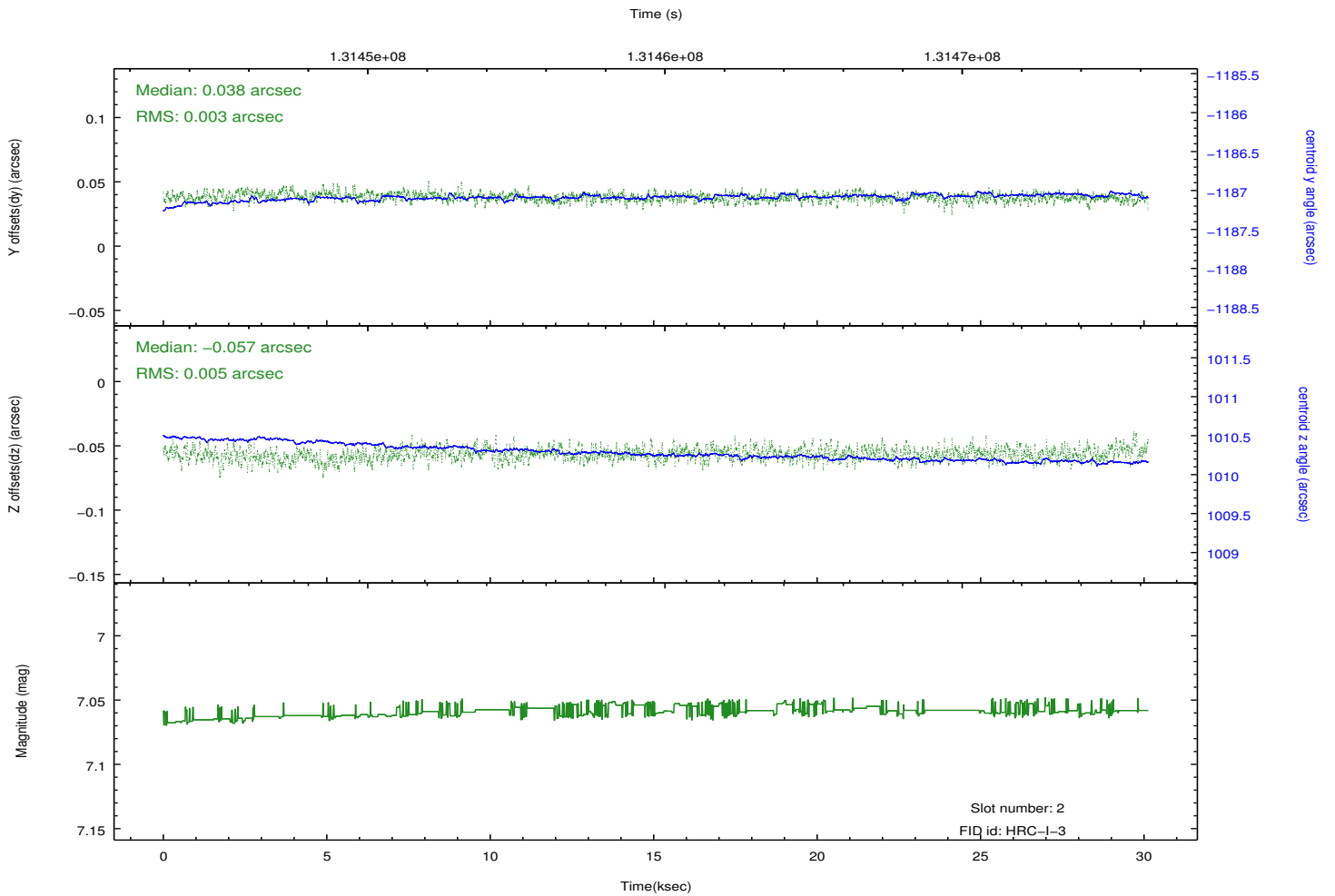
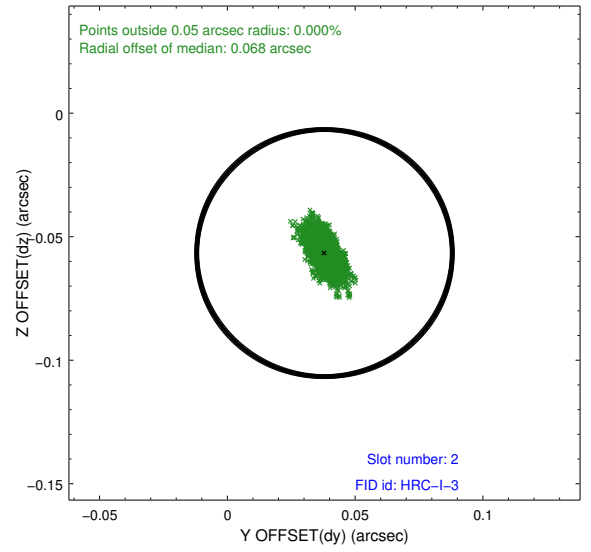
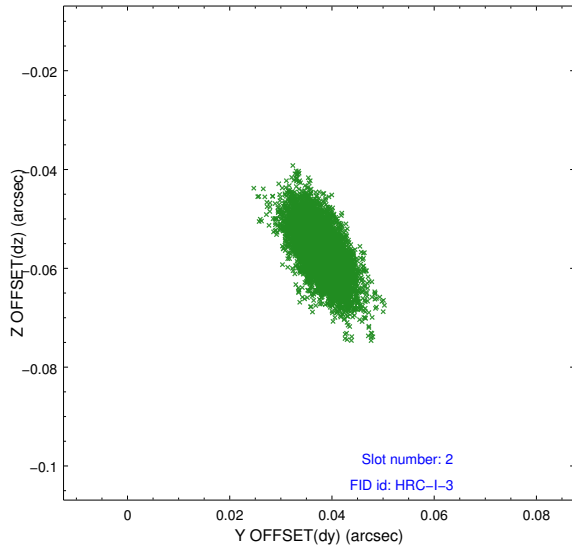
2.5.1 Slot 0



2.5.2 Slot 1



2.5.3 Slot 2



A Summary

A.1 Status

V&V Scientist	Jen Lauer
V&V Date (YYYY-MM-DD)	2012.10.04
V&V Edition	1
V&V Disposition and Status	OK
V&V Charge Time	29.871

A.2 Comments