

V&V Reference Report

L2 ASCDS Version : 8.4.5

Observation 2754 - L2 Version 4
Chandra X-Ray Center

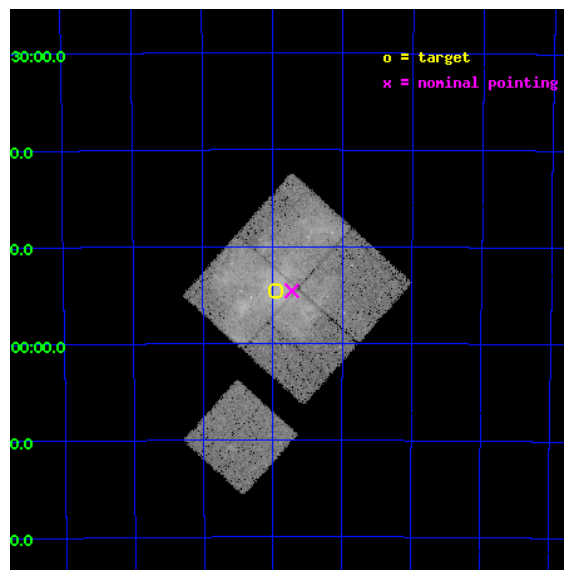
L2 Processing Date : Oct 11 2012

Contents

1	Front	2
2	OBI	3
2.1	OBI	3
2.1.1	Images	3
2.1.2	Bias	3
2.1.3	Parameters	4
2.1.4	Events	4
2.2	Compared Parameters	5
2.3	Aspect	6
2.4	Star Slots	9
2.4.1	Slot 3	9
2.4.2	Slot 4	10
2.4.3	Slot 5	11
2.4.4	Slot 6	12
2.4.5	Slot 7	13
2.5	FID Slots	14
2.5.1	Slot 0	14
2.5.2	Slot 1	15
2.5.3	Slot 2	16
A	Summary	17
A.1	Status	17
A.2	Comments	17

1 Front

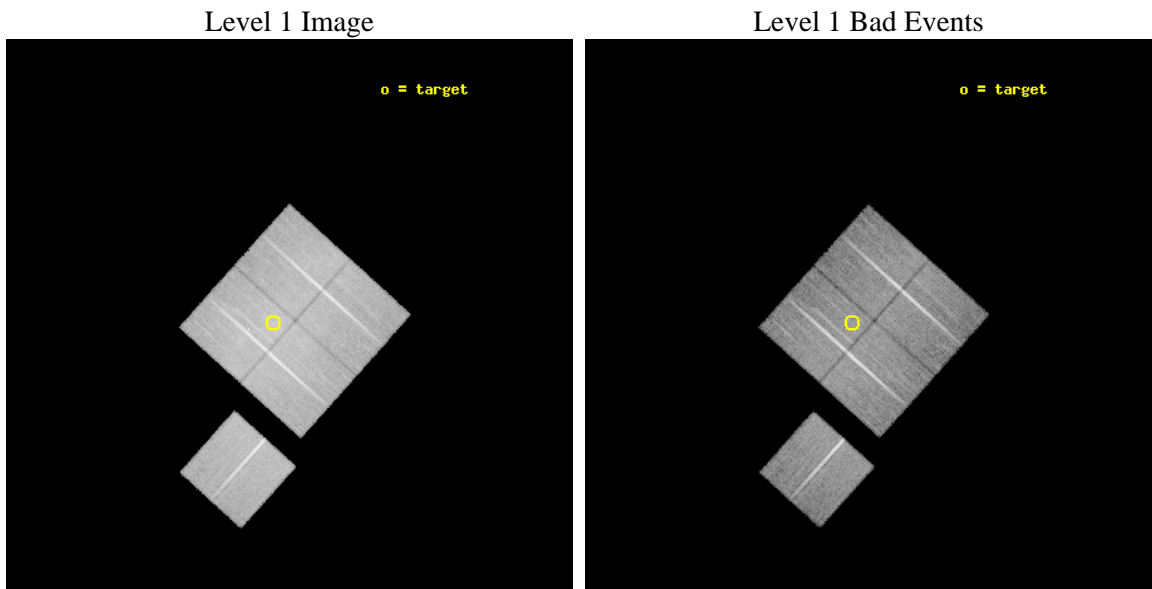
seq_num	500204	Sequence number
obs_id	2754	Observation id
title	AN X-RAY STUDY OF THE CENTER-FILLED SNR MSH11-61A AND ITS NEUTRON STAR CANDIDATE RX J1102.9-6054	Proposal title
observer	Dr. Peter Predehl	Principal investigator
object	MSH 11-61A	Source name
dtcycle	0	
cycle	P	events from which exps? Prim/Second/Both
ra_targ	165.738333	Observer's specified target RA [deg]
dec_targ	-60.909444	Observer's specified target Dec [deg]
ra_nom	165.68083108376	Nominal RA [deg]
dec_nom	-60.9096580622	Nominal Dec [deg]
roll_nom	222.00187790097	Nominal Roll [deg]
revision	4	Processing version of data
ontime	30110.218011618	Sum of GTIs [s]
livetime	29716.805846476	Livetime [s]
ontime0	30116.499942064	Sum of GTIs [s]
ontime1	30116.499942064	Sum of GTIs [s]
ontime2	30116.499942064	Sum of GTIs [s]
ontime3	30110.218011618	Sum of GTIs [s]
ontime6	30116.499942064	Sum of GTIs [s]
l2events	130377	Number of level 2 events



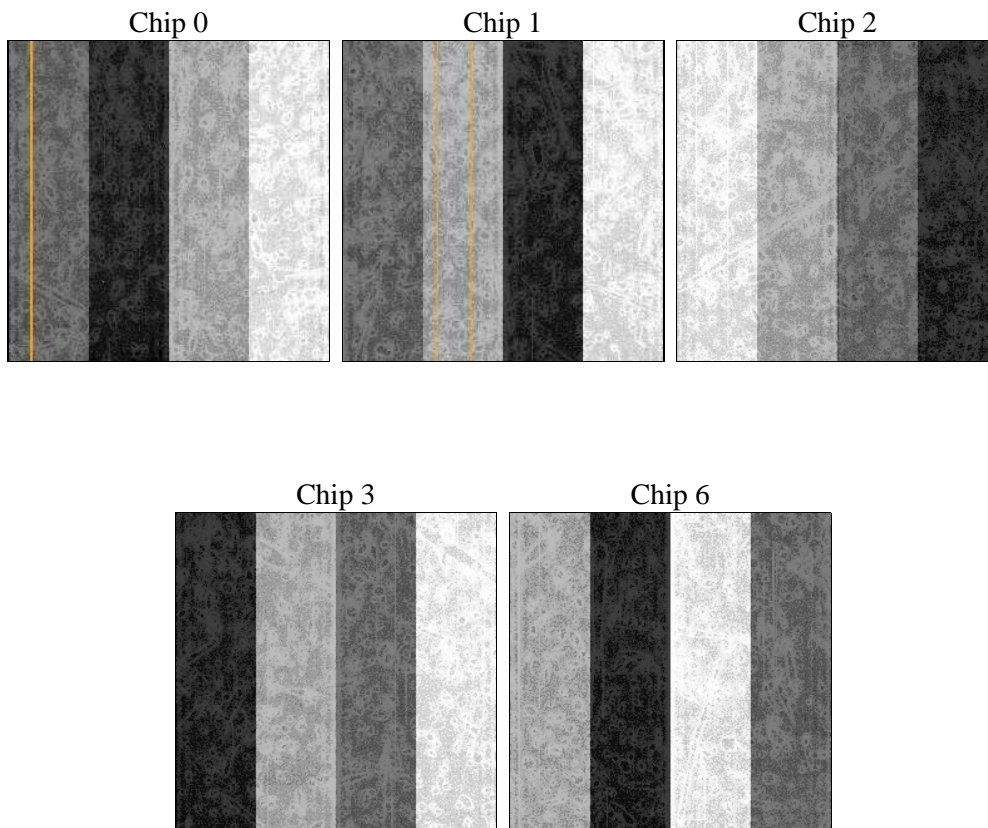
2 OBI

2.1 OBI

2.1.1 Images



2.1.2 Bias



2.1.3 Parameters

obi_num	0	Obi number	sched_exp_time	30000.000000	[s] Scheduled observation exposure time
ascdsver	8.4.5	Processing system revision	ontime	30110.218011618	Sum of GTIs [s]
caldbver	4.5.2	 	ontime0	30116.499942064	Sum of GTIs [s]
date	2012-10-11T15:50:22	Date and time of file creation	ontime1	30116.499942064	Sum of GTIs [s]
revision	4	Processing version of data	ontime2	30116.499942064	Sum of GTIs [s]
			ontime3	30110.218011618	Sum of GTIs [s]
			ontime6	30116.499942064	Sum of GTIs [s]
			l1events	912965	Number of level 1 events

2.1.4 Events

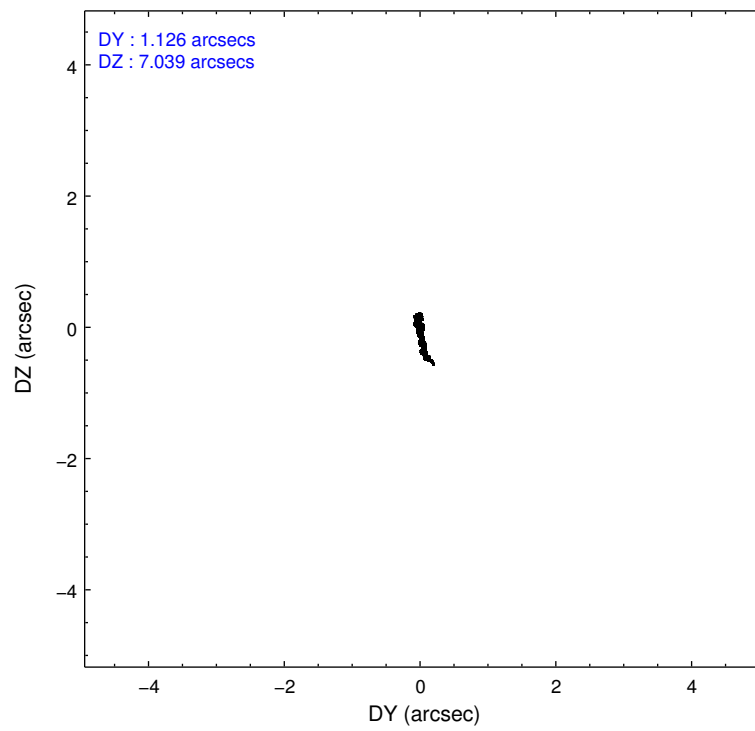
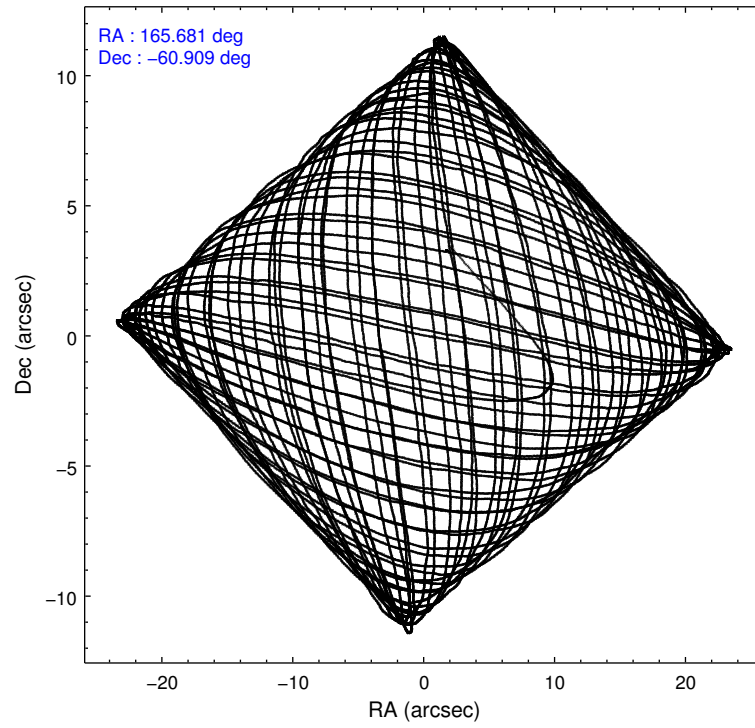
	ccd 0	ccd 1	ccd 2	ccd 3	ccd 6
level 1 events	164005	177538	190856	207139	173427
rejected events	142221	143786	165600	161473	155247
rejected %	86%	80%	86%	77%	89%

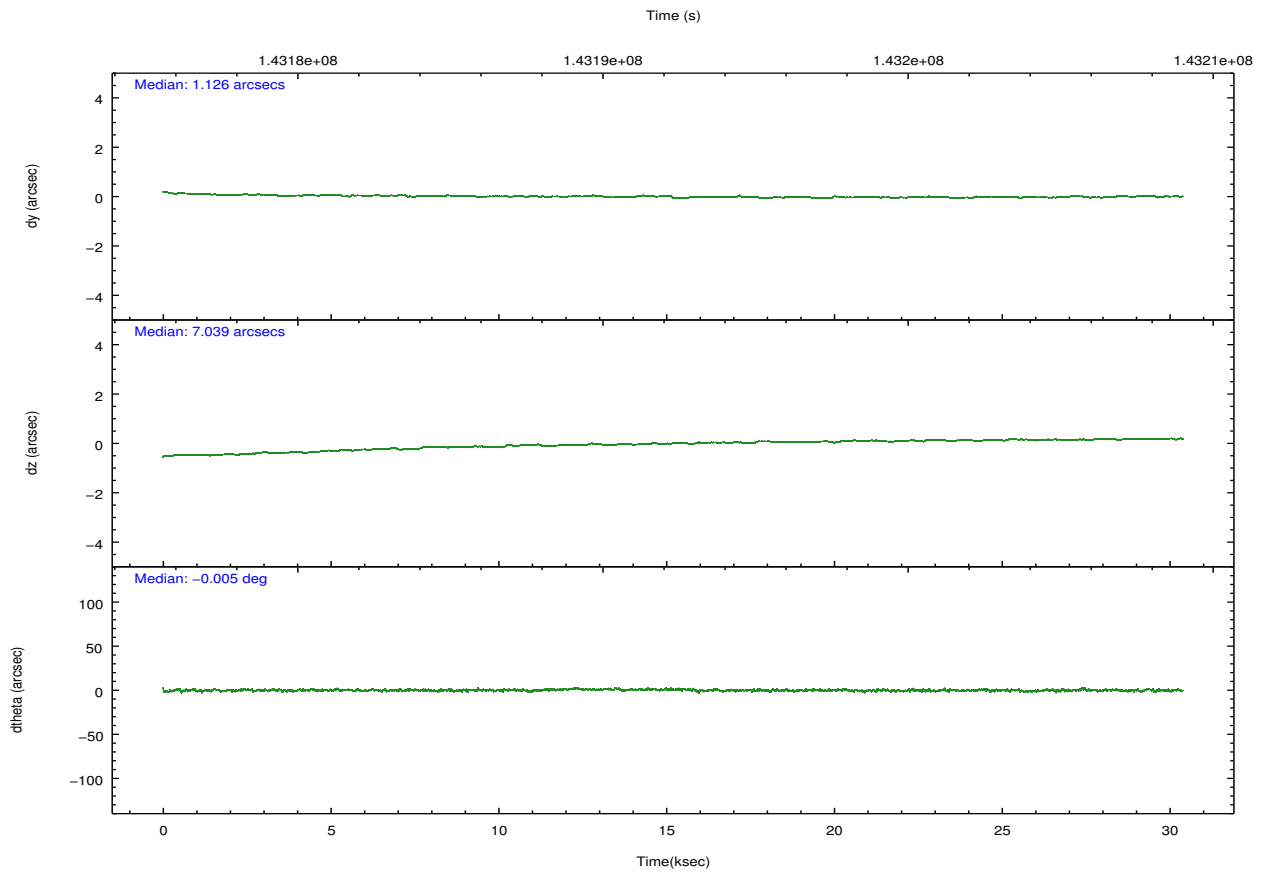
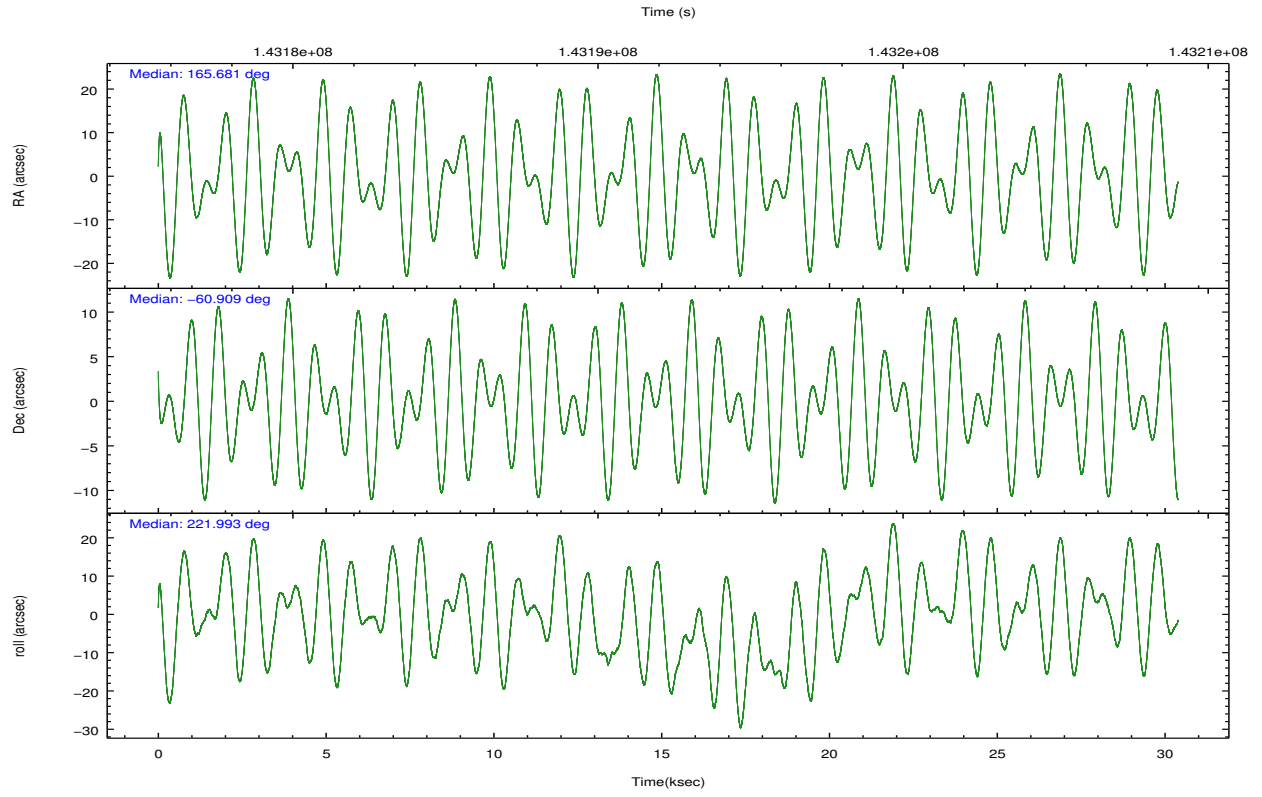
	ccd 0	ccd 1	ccd 2	ccd 3	ccd 6
grade 0 events	10913	20030	13956	31090	7368
	6%	11%	7%	15%	4%
grade 1 events	85	135	112	165	73
	0%	0%	0%	0%	0%
grade 2 events	3931	5147	4278	6083	3483
	2%	2%	2%	2%	2%
grade 3 events	1897	2363	1953	2353	1816
	1%	1%	1%	1%	1%
grade 4 events	1703	2313	1863	2472	1771
	1%	1%	0%	1%	1%
grade 5 events	5858	6444	5378	6550	6757
	3%	3%	2%	3%	3%
grade 6 events	3345	3905	3210	3678	3747
	2%	2%	1%	1%	2%
grade 7 events	136273	137201	160106	154748	148412
	83%	77%	83%	74%	85%

2.2 Compared Parameters

Parameter	Planned	Actual	Parameter	Planned	Actual
Instrument	ACIS	ACIS	Obspar format version number	7	7
Detector	ACIS-01236	ACIS-01236	Obspar file type	PREDICTED	ACTUAL
Grating	NONE	NONE	Obspar update status	NONE	UPDATED
Data mode	VFAINT	VFAINT	Number of optional ACIS chips dropped	0	0
Observation mode	POINTING	POINTING	On-chip summing requested	N	N
[deg] Pointing RA	165.698083	165.6808310837639	Subarray requested	NONE	NONE
[deg] Pointing Dec	-60.883574	-60.90965806219975	Alternating exposures requested	N	N
[deg] Pointing Roll	221.808257	222.0018779009732	[s] Primary exposure time	0.000000	3.1
[mm] SIM focus pos	-0.782348	-0.7809083437167272			
[mm] SIM defocus	0	0.001439871863259334			
[mm] SIM translation stage pos	-233.592463	-233.5874344608287			
[mm] SIM translation stage offset	0	-0.005018542100998502			
[s] Observation start time (MET)	143177487.184000	143176423.46263			
Observation start date	2002-07-16T03:30:23	2002-07-16T03:13:43			
[s] Observation end time (MET)	143207487.184000	143208041.63893			
Observation end date	2002-07-16T11:50:23	2002-07-16T12:00:41			
Read mode	TIMED	TIMED			

2.3 Aspect





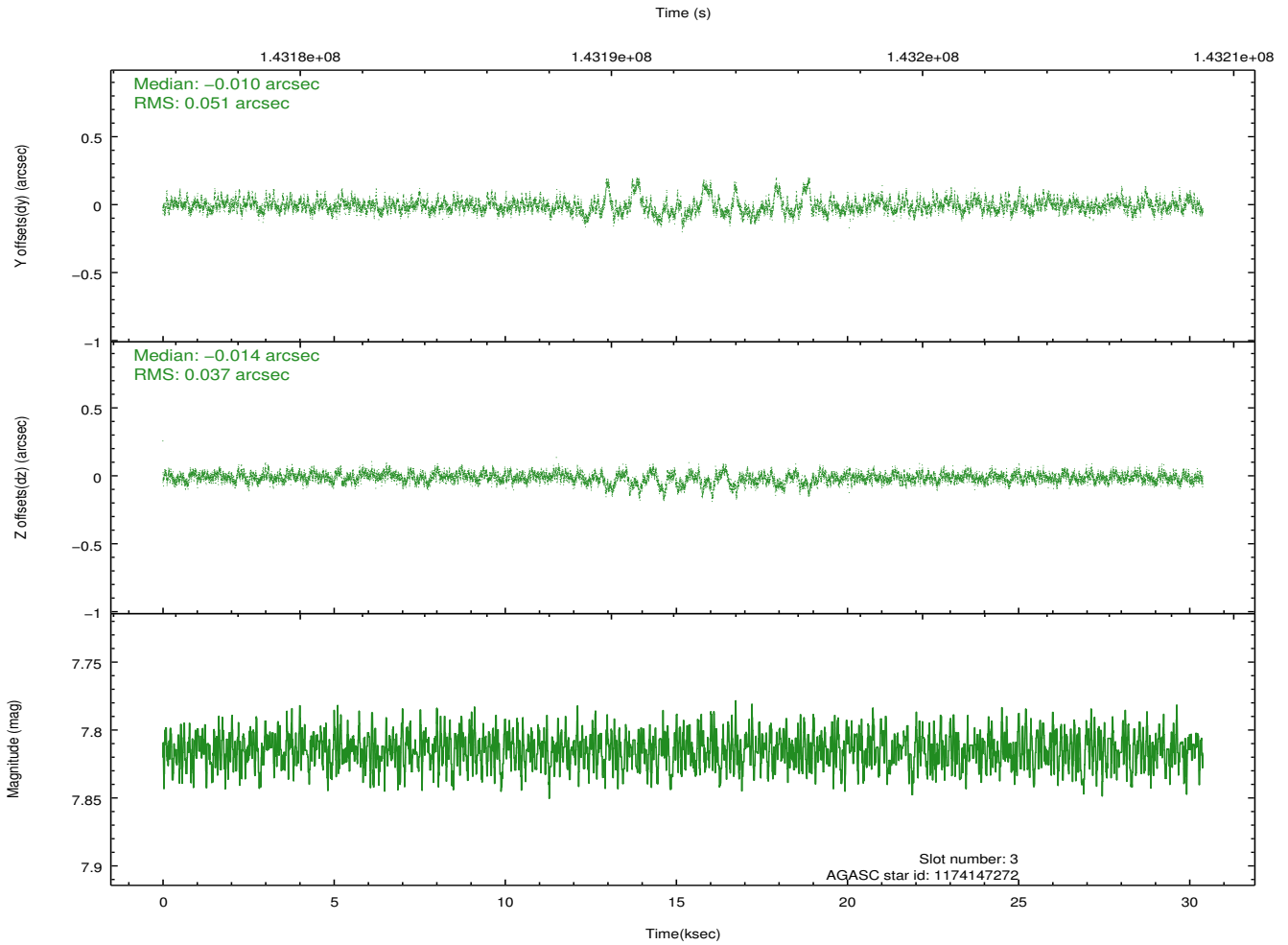
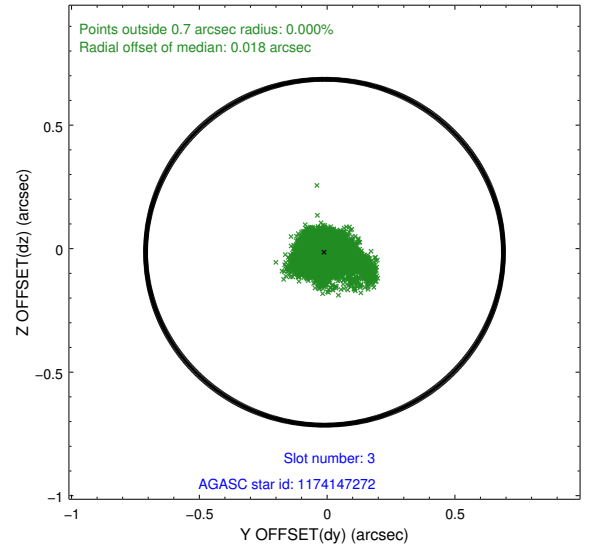
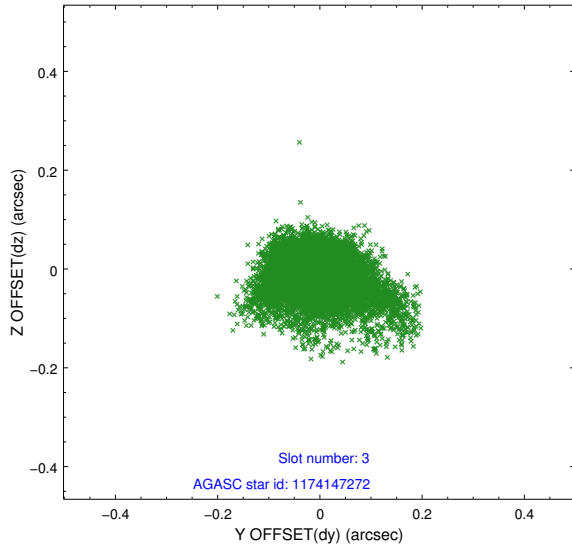
Slot Statistics

slot	status	id	mag	n_pts	med_dy	med_dz	dr1	dr2	ra	dec	mean_y	mean_z
0	FID	ACIS-I-2	6.94	7411	-0.108	-0.024	0.009	0.018	0.000000	0.000000	-755.53	-836.80
1	FID	ACIS-I-4	6.97	7410	-0.015	0.093	0.010	0.017	0.000000	0.000000	2158.50	1069.59
2	FID	ACIS-I-6	7.02	7411	0.023	-0.006	0.015	0.030	0.000000	0.000000	404.66	1711.67
3	GUIDE	1174147272	7.81	14822	-0.010	-0.014	0.061	0.118	165.413771	-61.562087	1993.04	1497.10
4	GUIDE	1174159024	9.62	14815	0.187	-0.124	0.103	0.189	164.290062	-60.845452	1768.21	-1728.24
5	GUIDE	1174174408	9.32	14748	0.091	-0.002	0.102	0.164	164.349657	-61.053158	2175.55	-1092.68
6	GUIDE	1174178136	7.85	14822	-0.064	-0.126	0.063	0.136	165.224552	-60.325480	-707.00	-2058.08
7	GUIDE	1174275336	9.04	14748	-0.198	0.252	0.125	0.462	167.513573	-60.930682	-2224.15	2275.87

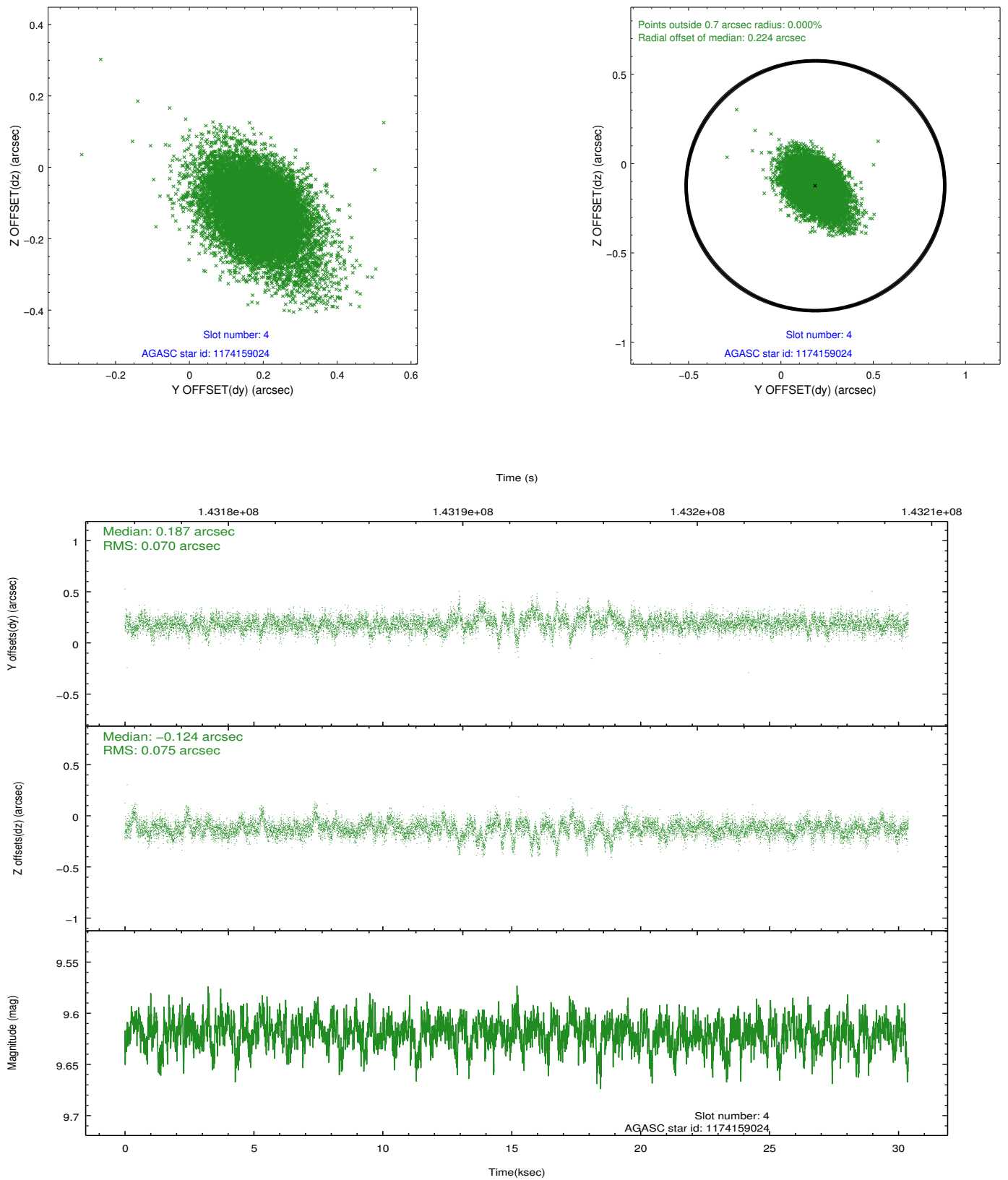
∞

2.4 Star Slots

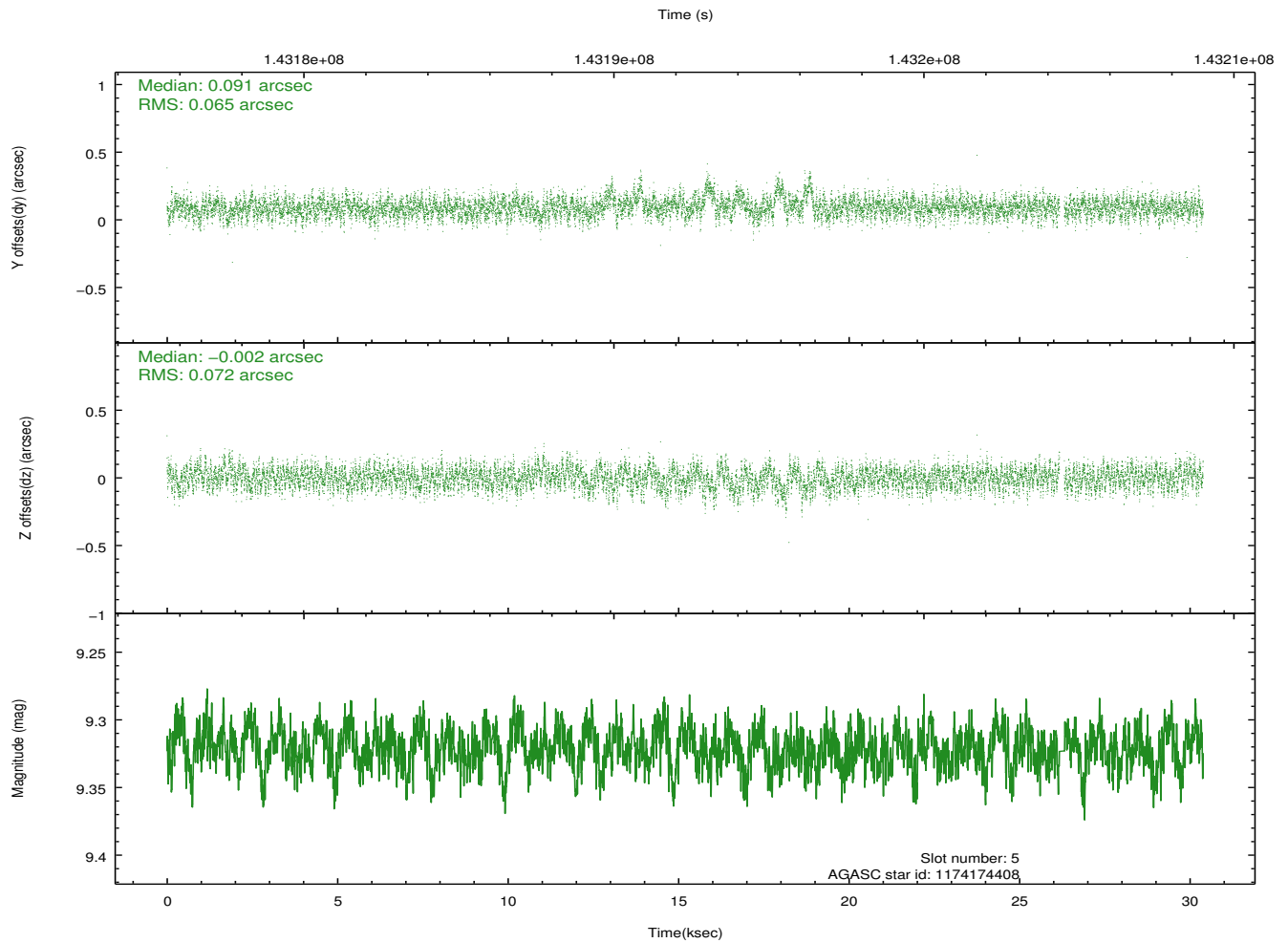
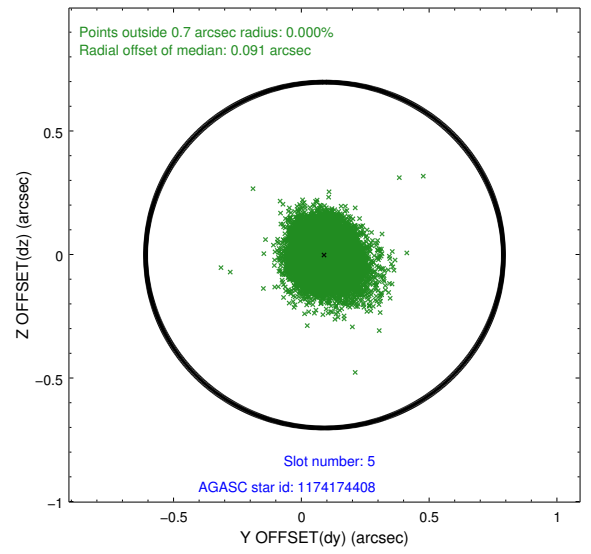
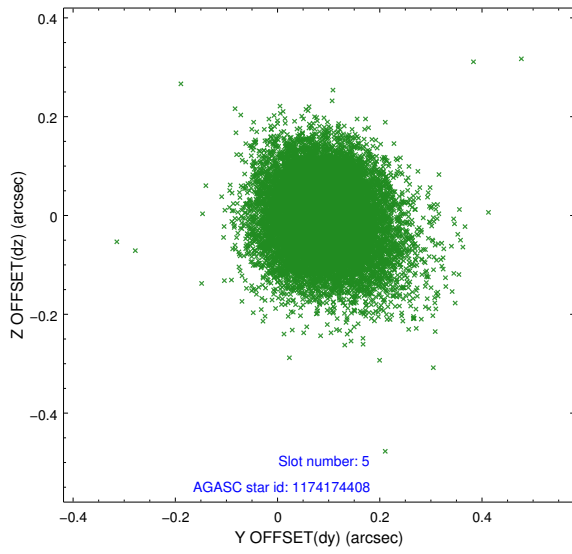
2.4.1 Slot 3



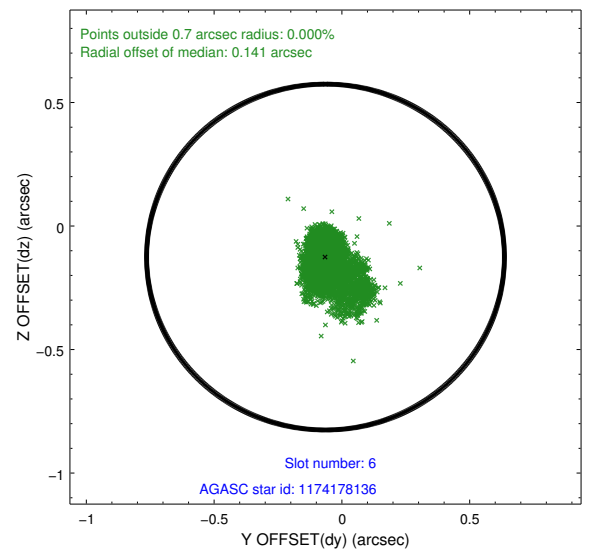
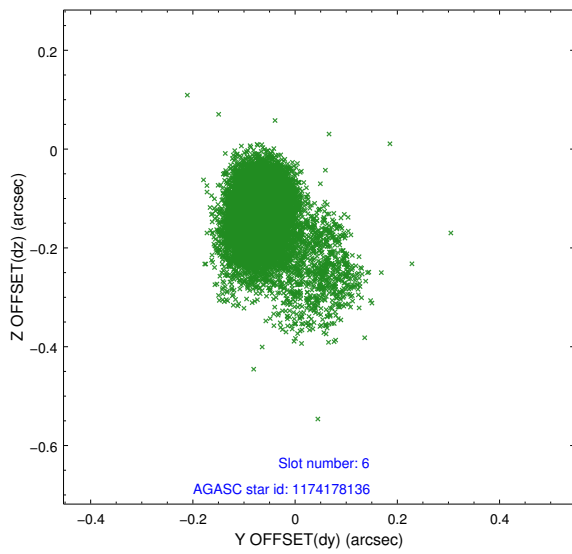
2.4.2 Slot 4



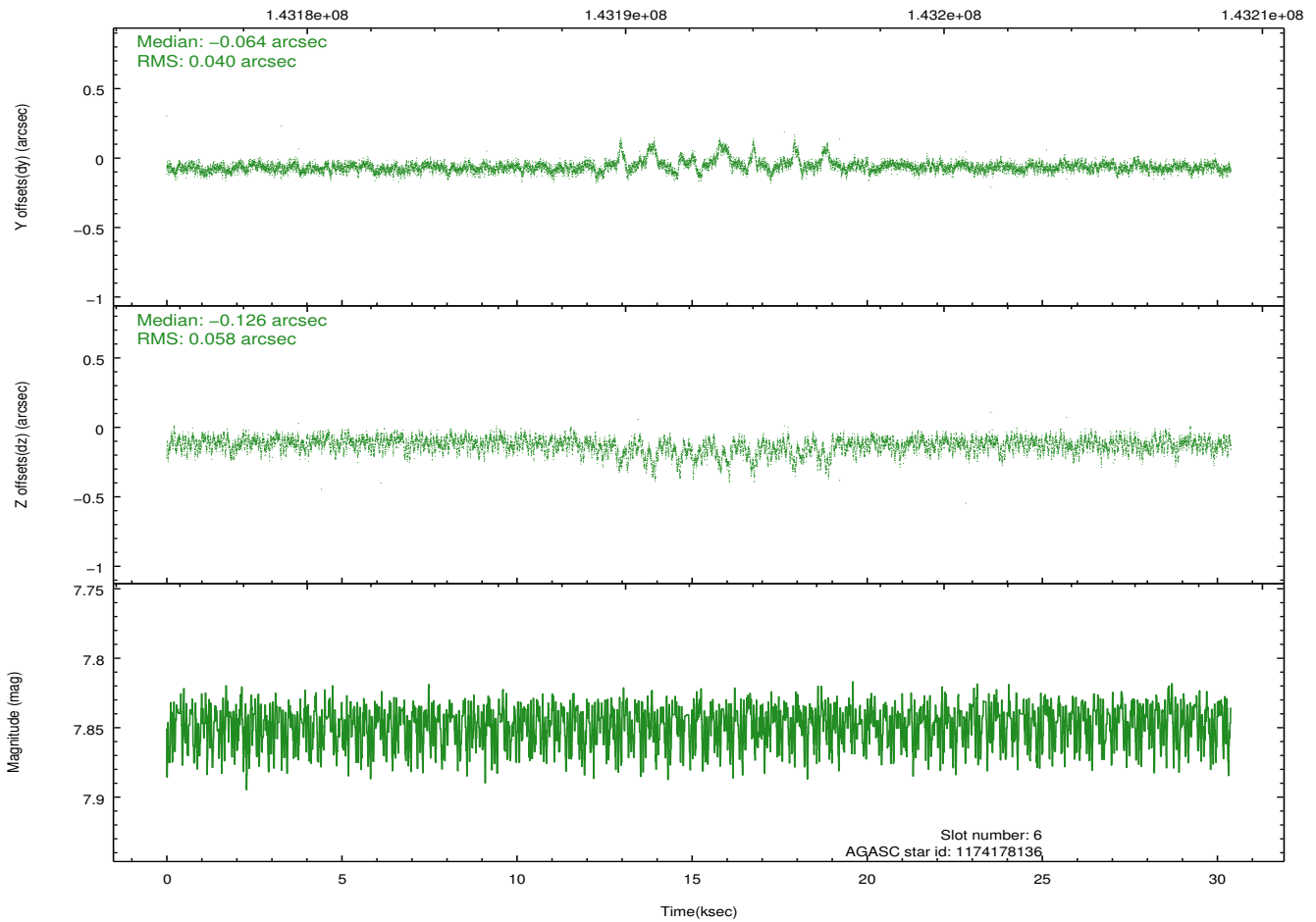
2.4.3 Slot 5



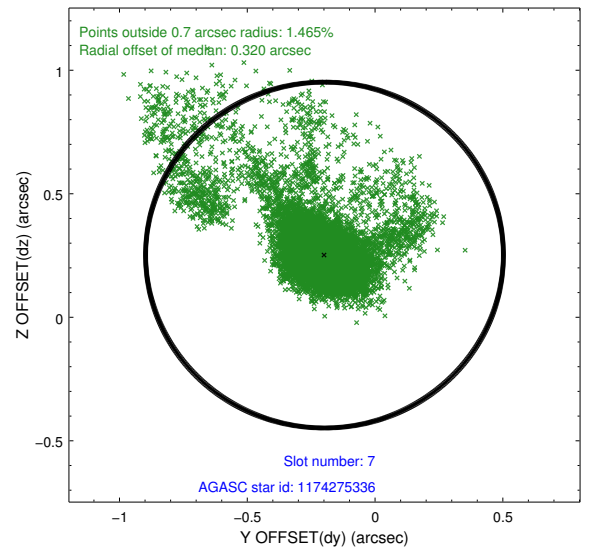
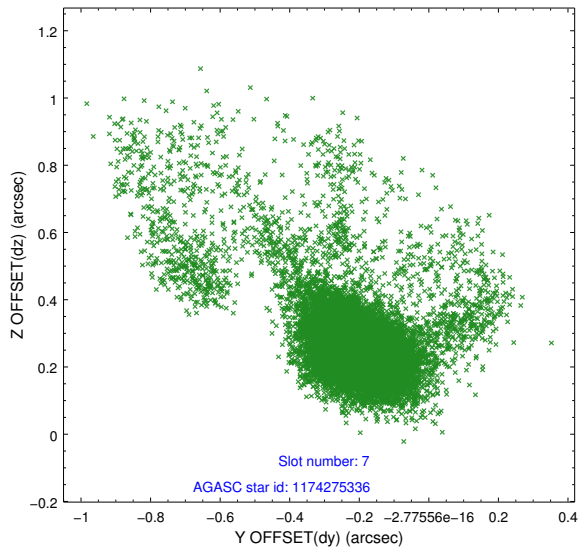
2.4.4 Slot 6



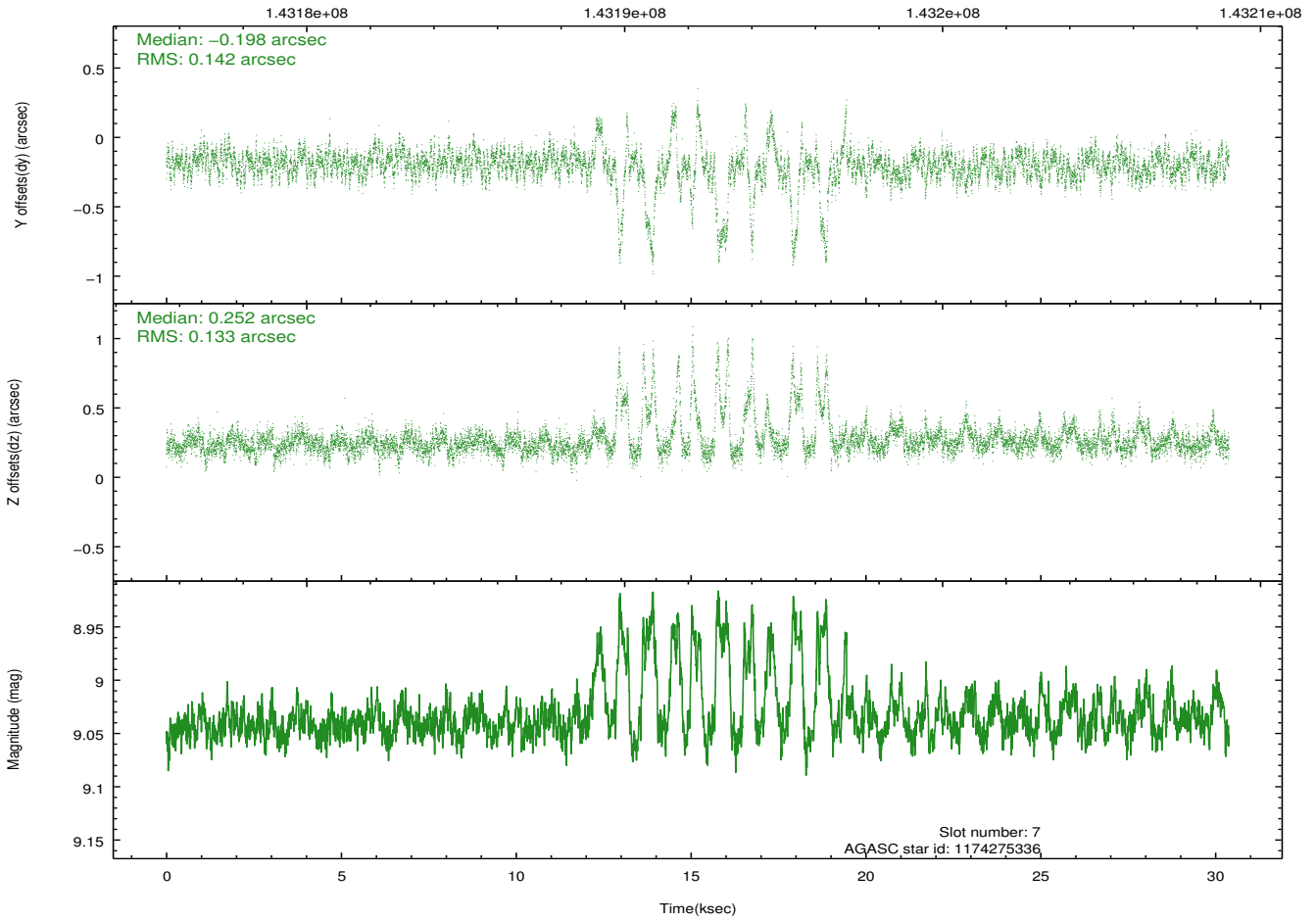
Time (s)



2.4.5 Slot 7

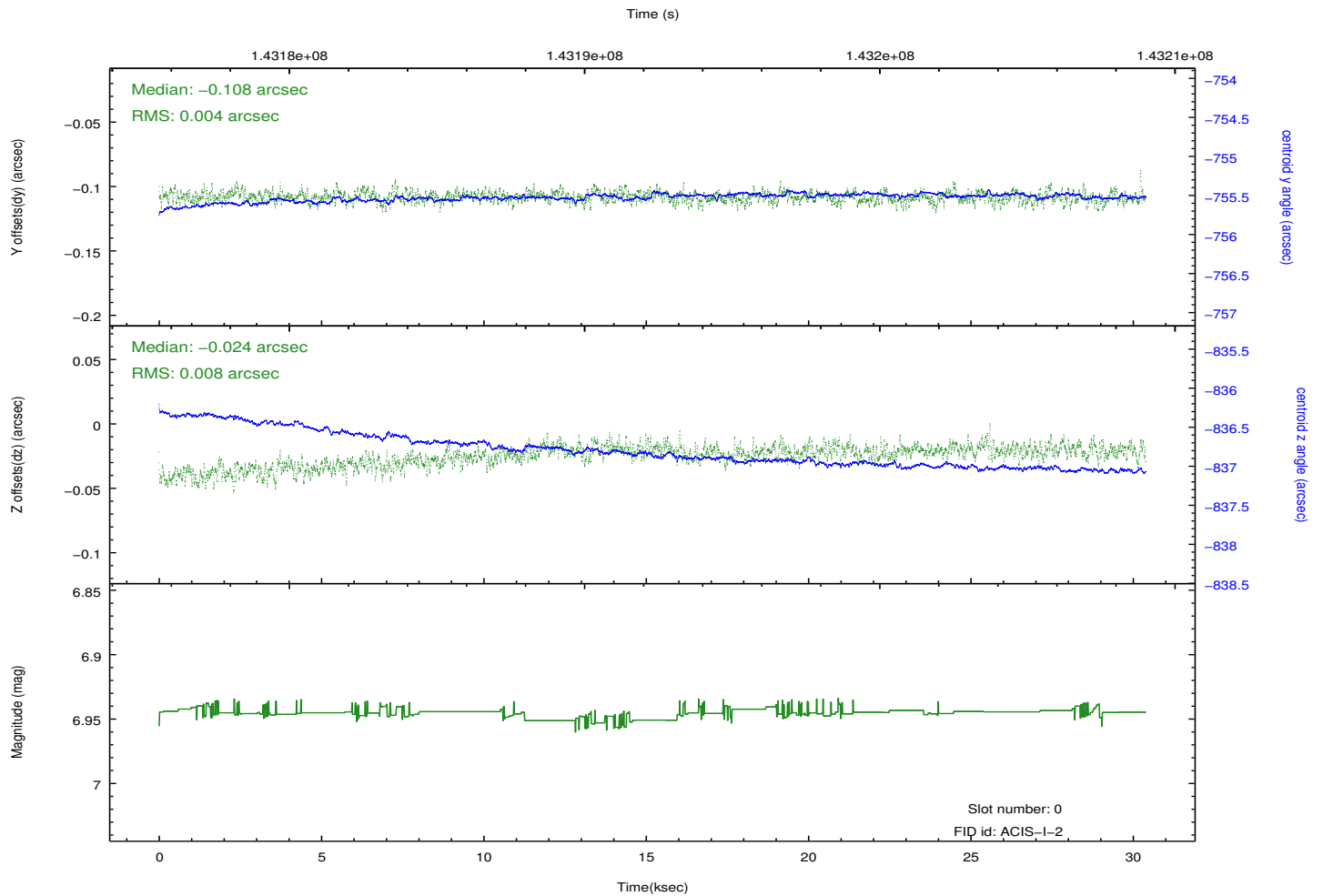
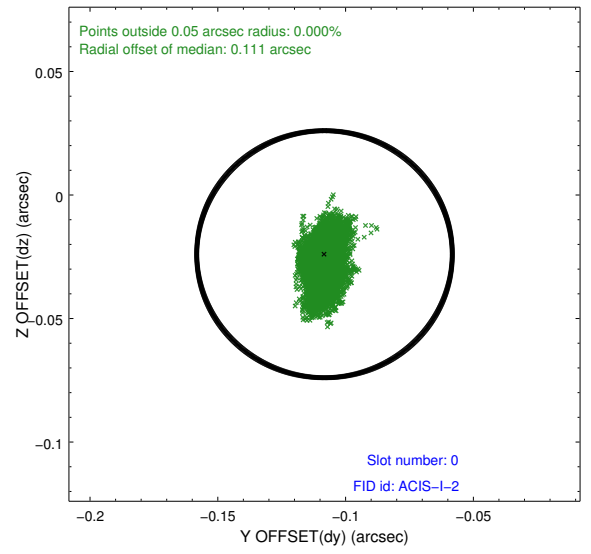
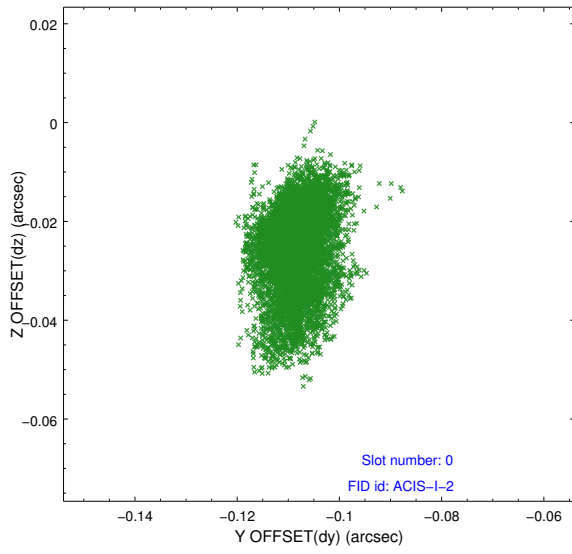


Time (s)

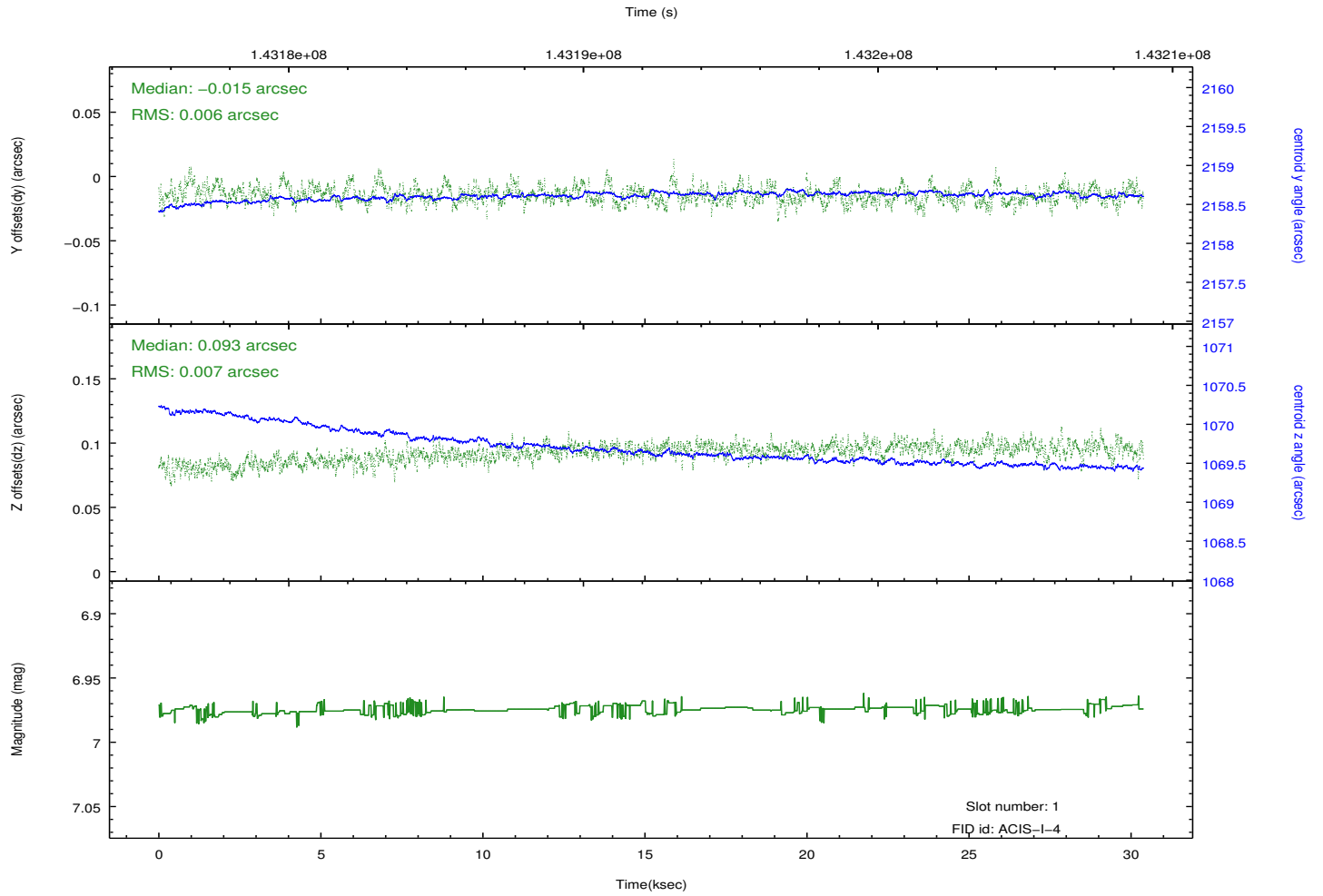
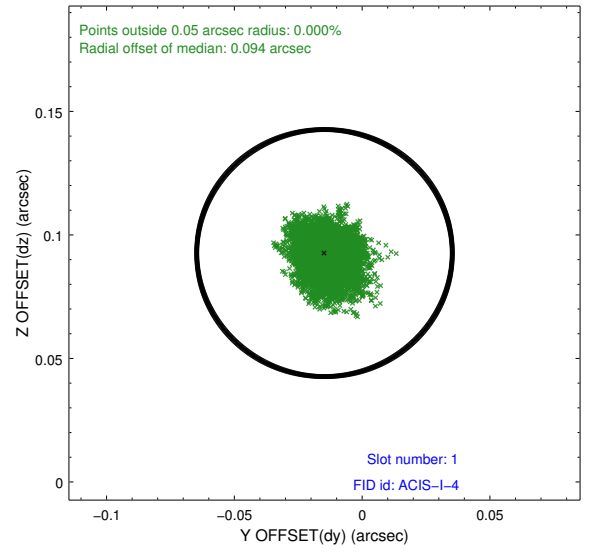
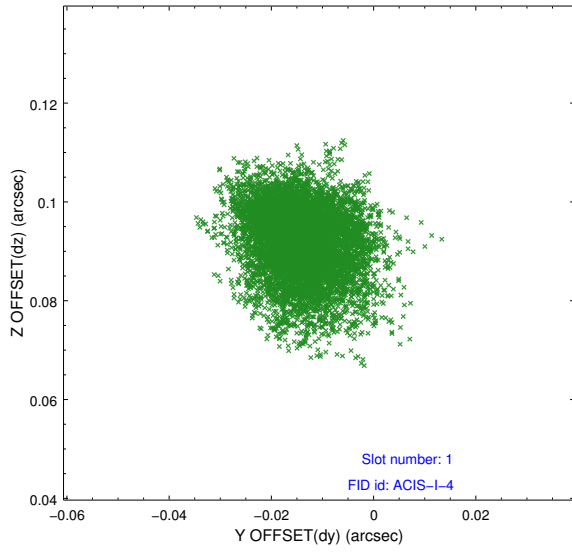


2.5 FID Slots

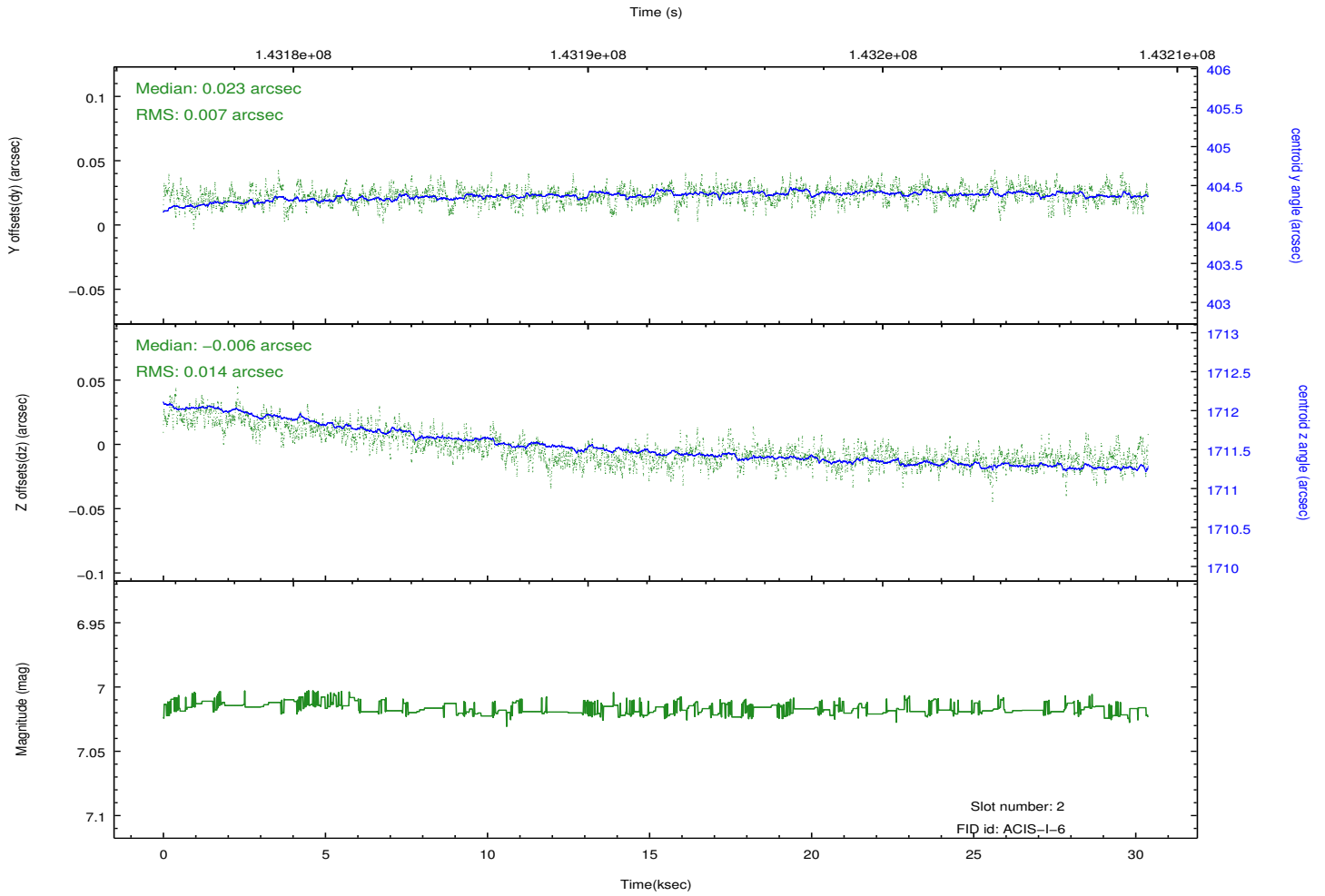
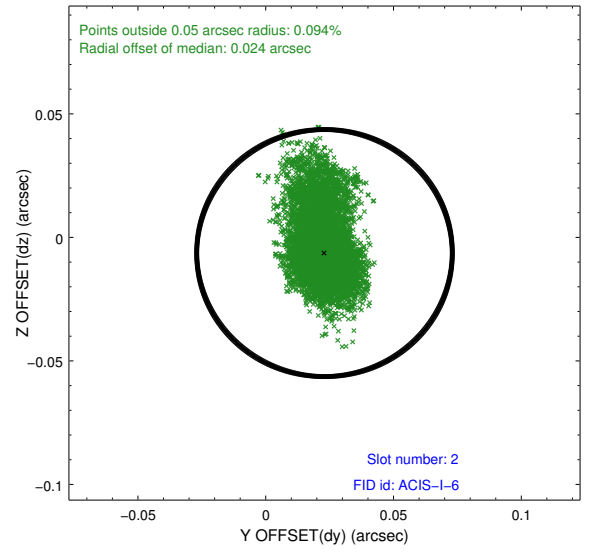
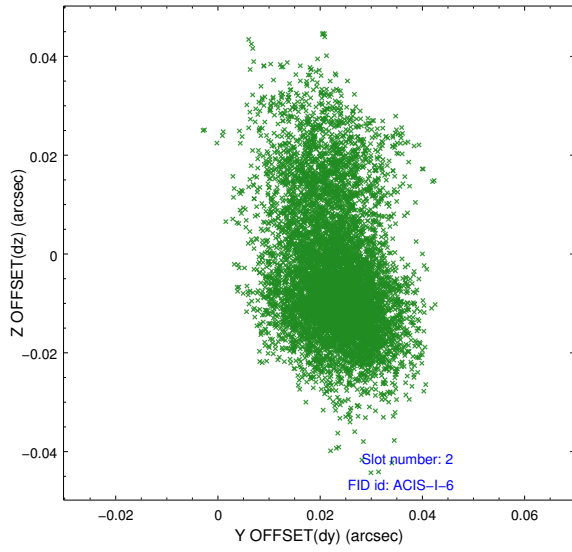
2.5.1 Slot 0



2.5.2 Slot 1



2.5.3 Slot 2



A Summary

A.1 Status

V&V Scientist	Beth Sundheim
V&V Date (YYYY-MM-DD)	2012.10.21
V&V Edition	1
V&V Disposition and Status	OK
V&V Charge Time	30.113

A.2 Comments