

V&V Reference Report

L2 ASCDS Version : 8.4.5

Observation 2764 - L2 Version 3
Chandra X-Ray Center

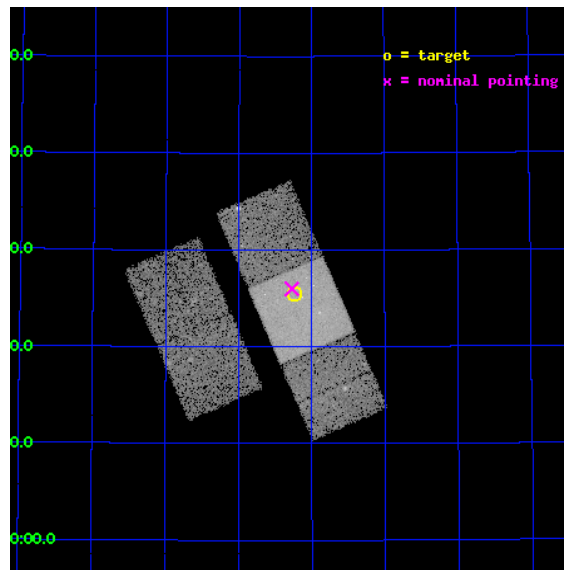
L2 Processing Date : Oct 3 2012

Contents

1	Front	2
2	OBI	3
2.1	OBI	3
2.1.1	Images	3
2.1.2	Bias	3
2.1.3	Parameters	4
2.1.4	Events	4
2.2	Compared Parameters	5
2.3	Aspect	6
2.4	Star Slots	9
2.4.1	Slot 3	9
2.4.2	Slot 4	10
2.4.3	Slot 5	11
2.4.4	Slot 6	12
2.4.5	Slot 7	13
2.5	FID Slots	14
2.5.1	Slot 0	14
2.5.2	Slot 1	15
2.5.3	Slot 2	16
A	Summary	17
A.1	Status	17
A.2	Comments	17

1 Front

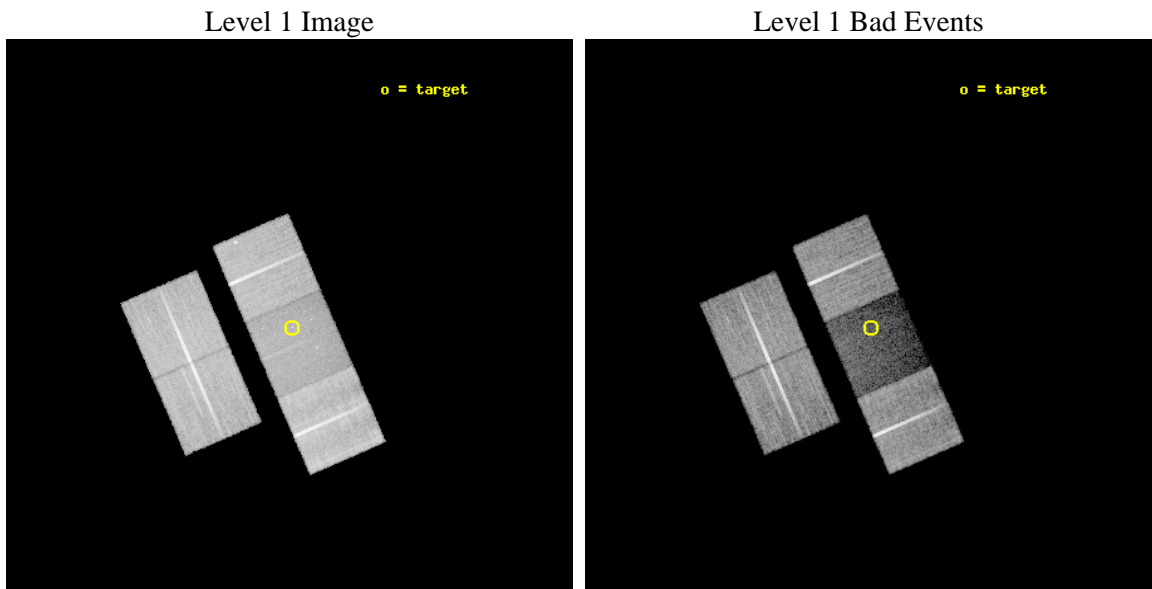
seq_num	500214	Sequence number
obs_id	2764	Observation id
title	THE NEXT GEMINGA: A NEUTRON STAR IDENTIFICATION FOR THE EGRET SOURCE 3EG J1835+5918	Proposal title
observer	Prof. Jules Halpern	Principal investigator
object	3EG J1835+5918	Source name
dtcycle	0	
cycle	P	events from which exps? Prim/Second/Both
ra_targ	279.0575	Observer's specified target RA [deg]
dec_targ	59.425111	Observer's specified target Dec [deg]
ra_nom	279.068048204	Nominal RA [deg]
dec_nom	59.433202163041	Nominal Dec [deg]
roll_nom	66.5770487777	Nominal Roll [deg]
revision	3	Processing version of data
ontime	28116.999945939	Sum of GTIs [s]
livetime	27749.630642211	Livetime [s]
ontime2	28107.577144921	Sum of GTIs [s]
ontime3	28116.999945939	Sum of GTIs [s]
ontime6	28116.999945939	Sum of GTIs [s]
ontime7	28116.999945939	Sum of GTIs [s]
ontime8	28116.999945939	Sum of GTIs [s]
l2events	93313	Number of level 2 events



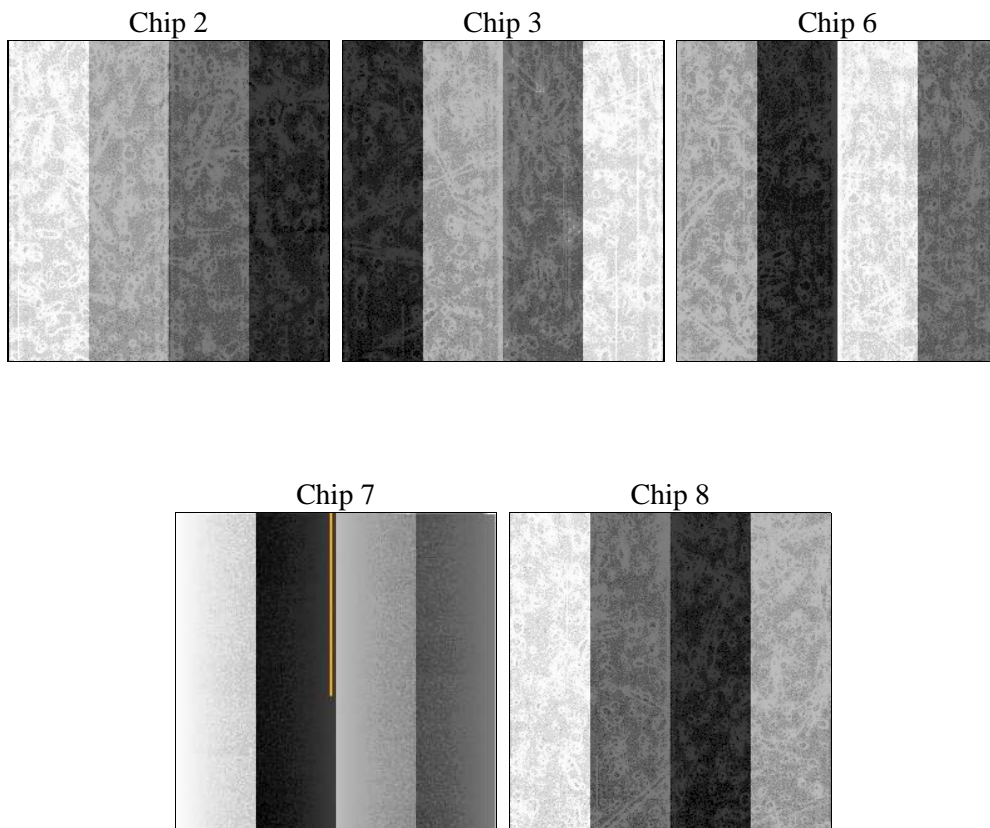
2 OBI

2.1 OBI

2.1.1 Images



2.1.2 Bias



2.1.3 Parameters

obi_num	1	Obi number	sched_exp_time	28000.000000	[s] Scheduled observation exposure time
ascdsver	8.4.5	Processing system revision	ontime	28116.999945939	Sum of GTIs [s]
caldbver	4.5.2	 	ontime2	28107.577144921	Sum of GTIs [s]
date	2012-10-03T03:45:16	Date and time of file creation	ontime3	28116.999945939	Sum of GTIs [s]
revision	3	Processing version of data	ontime6	28116.999945939	Sum of GTIs [s]
			ontime7	28116.999945939	Sum of GTIs [s]
			ontime8	28116.999945939	Sum of GTIs [s]
			l1events	709388	Number of level 1 events

2.1.4 Events

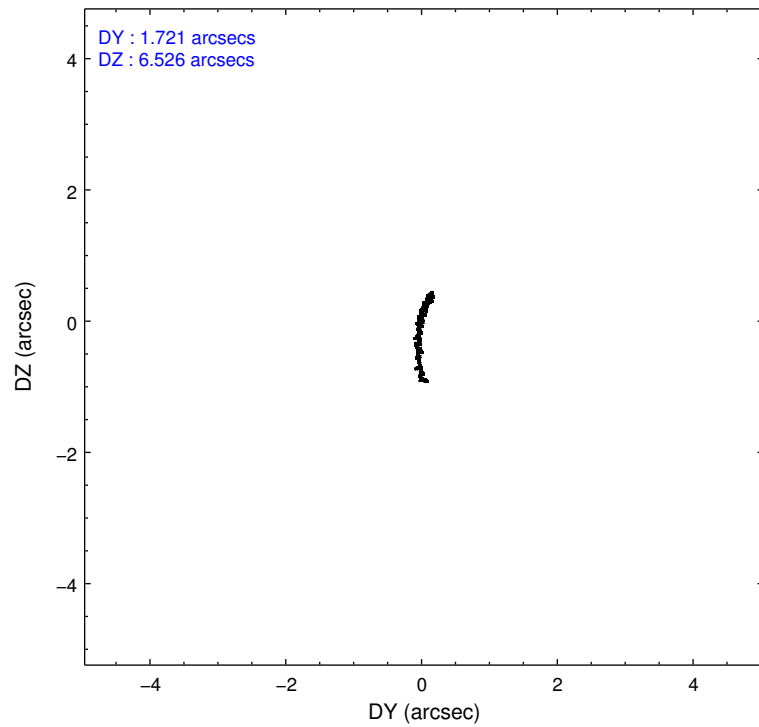
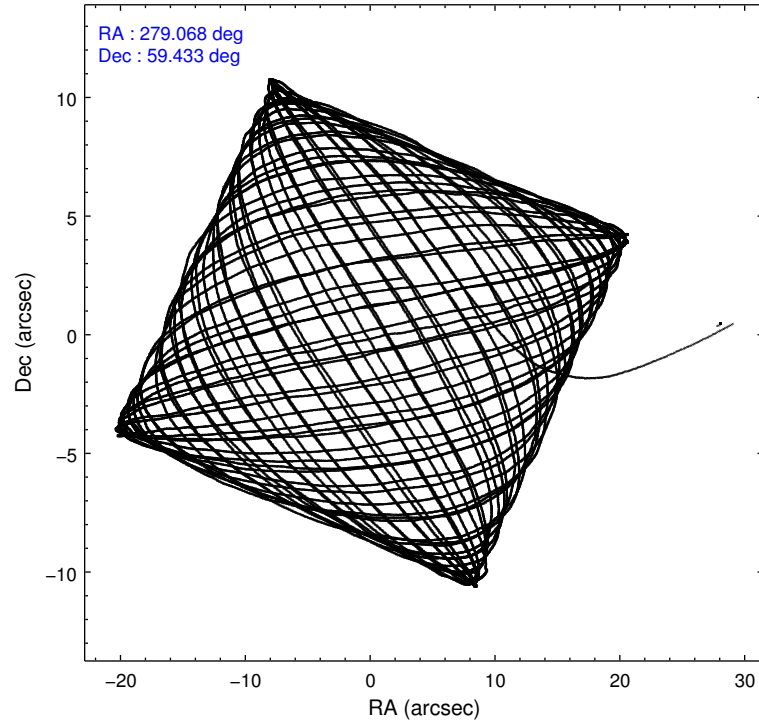
	ccd 2	ccd 3	ccd 6	ccd 7	ccd 8
level 1 events	152940	144480	146063	90569	175336
rejected events	141610	133883	132644	35585	135679
rejected %	92%	92%	90%	39%	77%

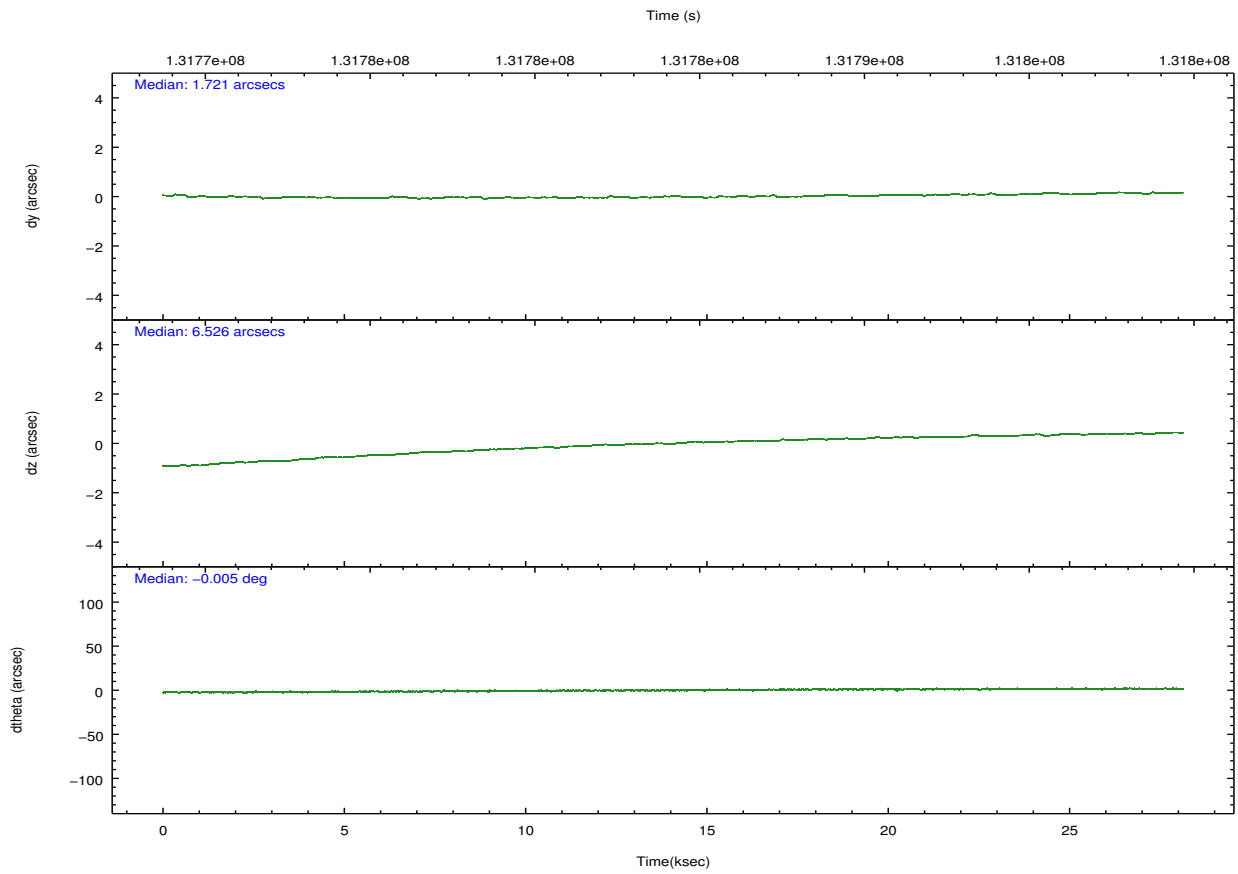
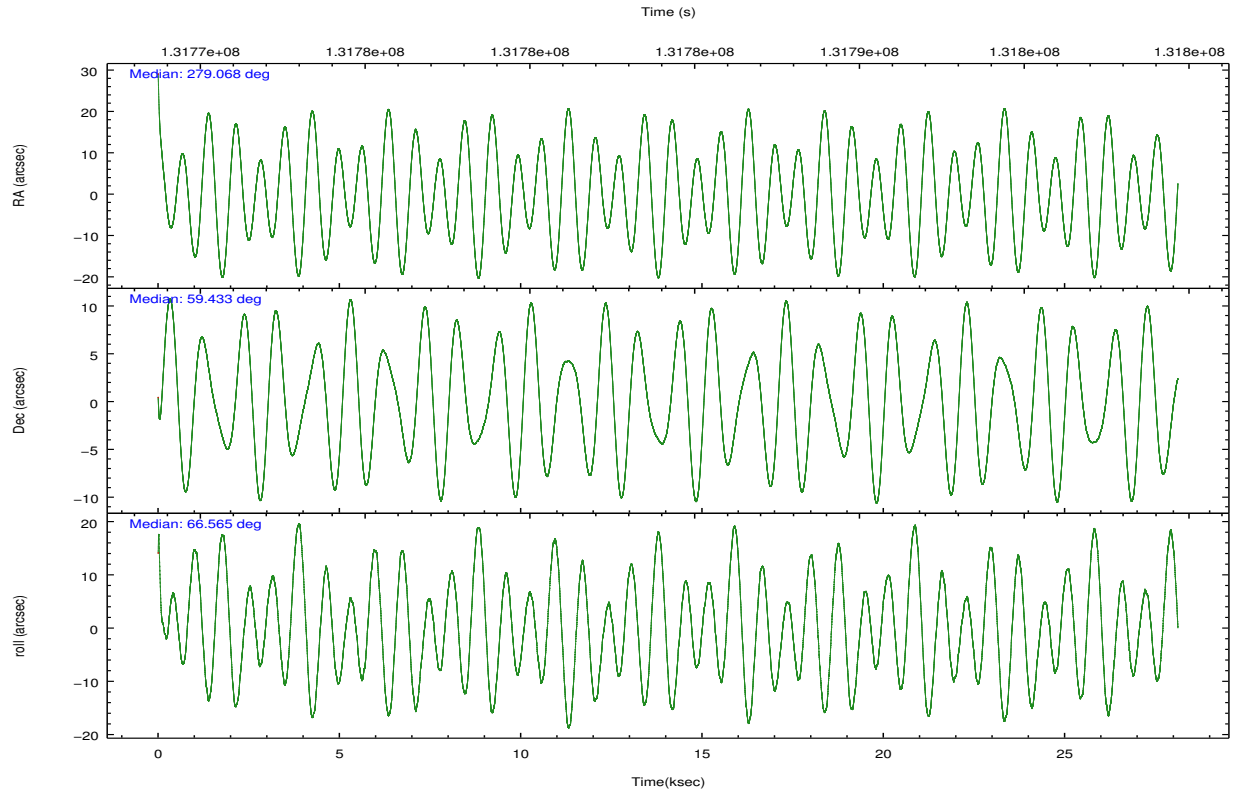
	ccd 2	ccd 3	ccd 6	ccd 7	ccd 8
grade 0 events	4916	4428	6432	7752	12187
	3%	3%	4%	8%	6%
grade 1 events	52	62	65	126	116
	0%	0%	0%	0%	0%
grade 2 events	2588	2302	2737	13182	9007
	1%	1%	1%	14%	5%
grade 3 events	1300	1306	1449	5945	4922
	0%	0%	0%	6%	2%
grade 4 events	1344	1292	1429	5783	4456
	0%	0%	0%	6%	2%
grade 5 events	2130	2583	2727	8314	4431
	1%	1%	1%	9%	2%
grade 6 events	1673	1786	1984	24268	10916
	1%	1%	1%	26%	6%
grade 7 events	138937	130721	129240	25199	129301
	90%	90%	88%	27%	73%

2.2 Compared Parameters

Parameter	Planned	Actual	Parameter	Planned	Actual
Instrument	ACIS	ACIS	Obspar format version number	7	7
Detector	ACIS-23678	ACIS-23678	Obspar file type	PREDICTED	ACTUAL
Grating	NONE	NONE	Obspar update status	NONE	UPDATED
Data mode	VFAINT	VFAINT	Number of optional ACIS chips dropped	0	0
Observation mode	POINTING	POINTING	On-chip summing requested	N	N
[deg] Pointing RA	279.074845	279.0680482040042	Subarray requested	NONE	NONE
[deg] Pointing Dec	59.406165	59.43320216304058	Alternating exposures requested	N	N
[deg] Pointing Roll	66.414553	66.57704877770016	[s] Primary exposure time	0.000000	3.1
[mm] SIM focus pos	-0.684267	-0.6828225247311905			
[mm] SIM defocus	0	0.001444936568705701			
[mm] SIM translation stage pos	-190.132523	-190.1400660498719			
[mm] SIM translation stage offset	0	0.00754346686406393			
[s] Observation start time (MET)	131770253.184000	131768520.9851			
Observation start date	2002-03-06T02:49:49	2002-03-06T02:22:00			
[s] Observation end time (MET)	131798253.184000	131798915.31133			
Observation end date	2002-03-06T10:36:29	2002-03-06T10:48:35			
Read mode	TIMED	TIMED			

2.3 Aspect



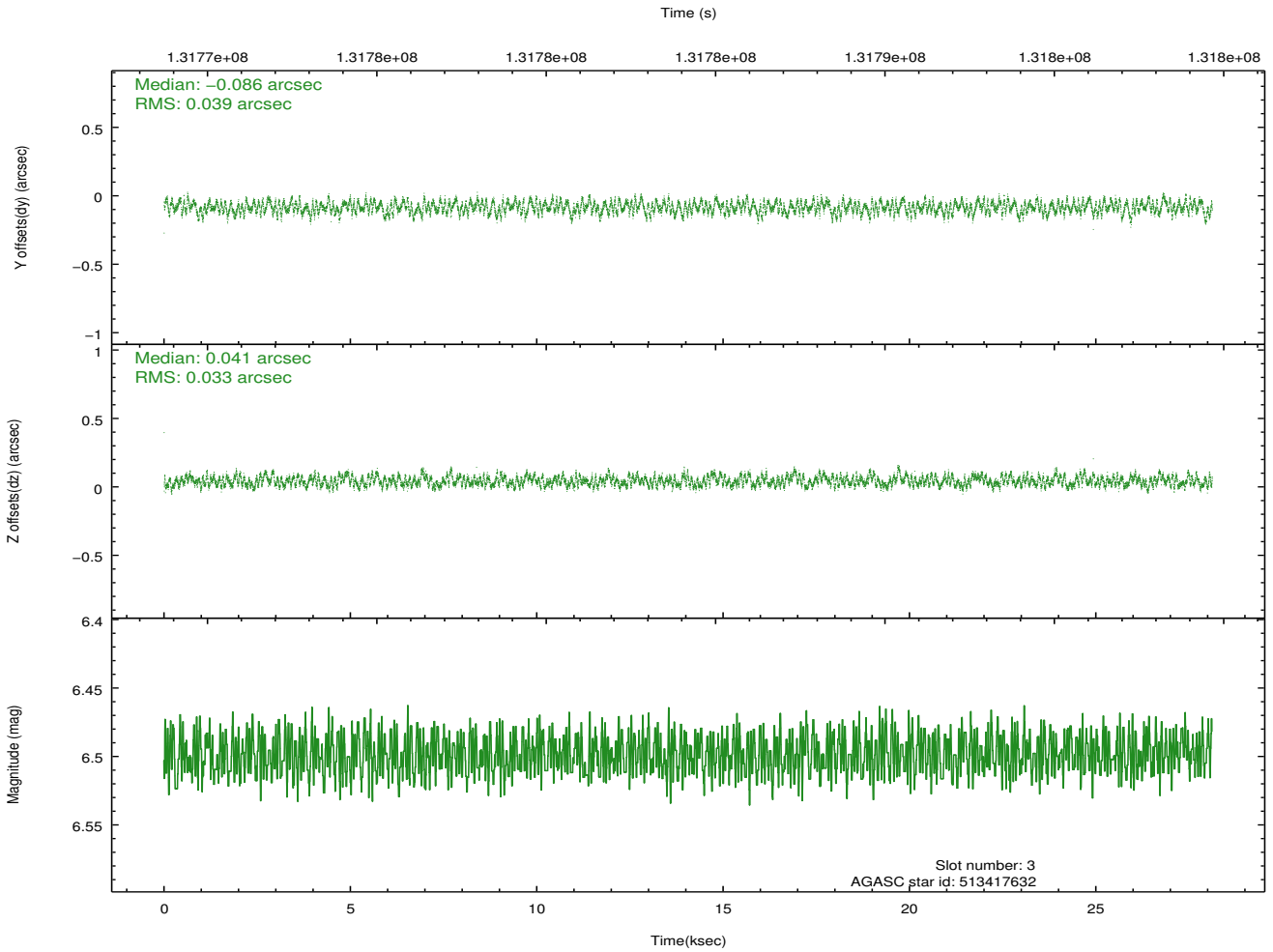
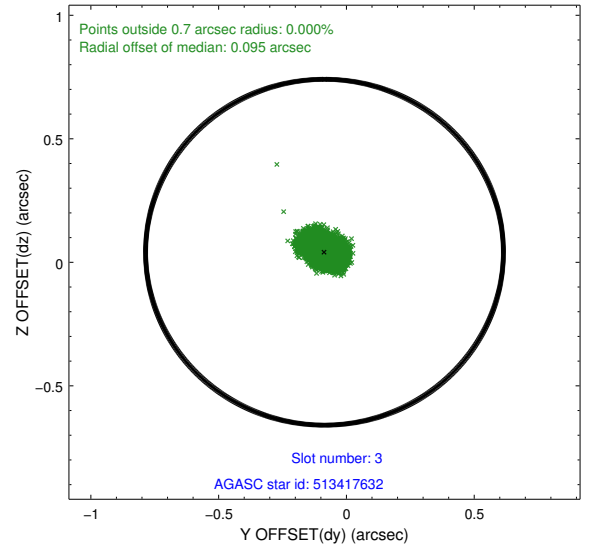
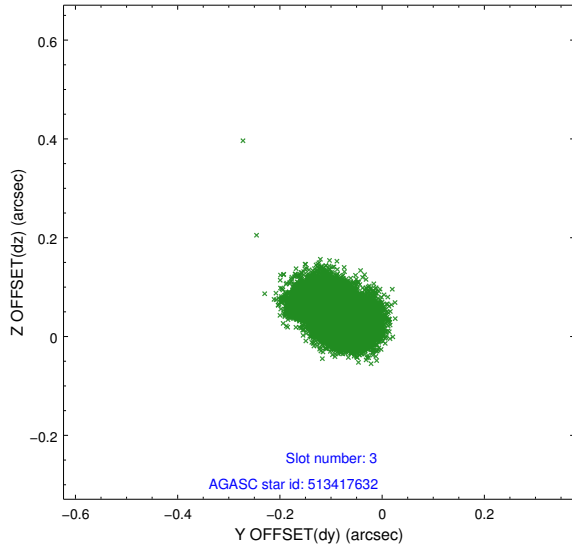


Slot Statistics

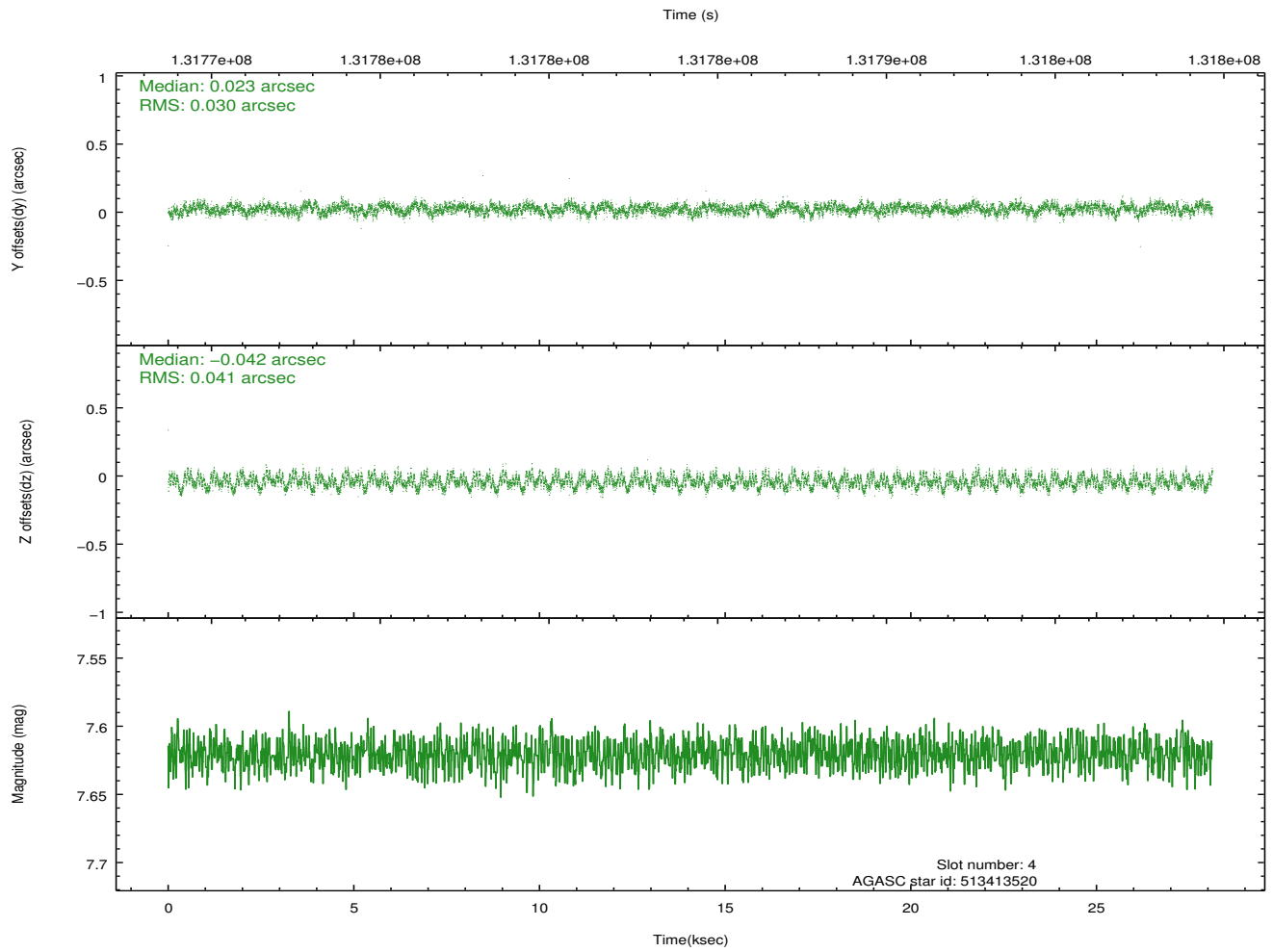
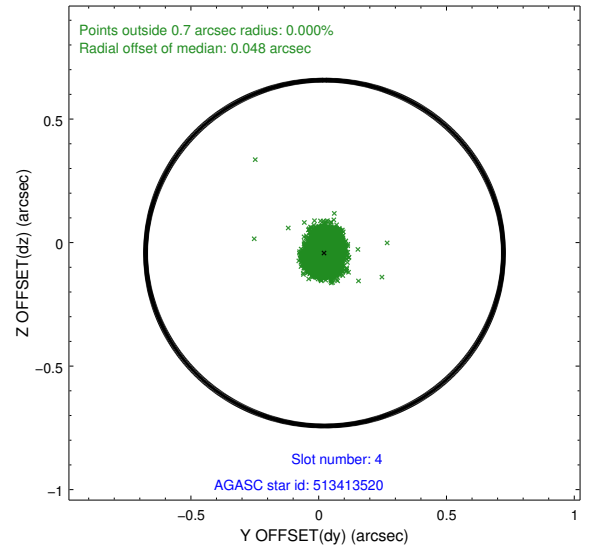
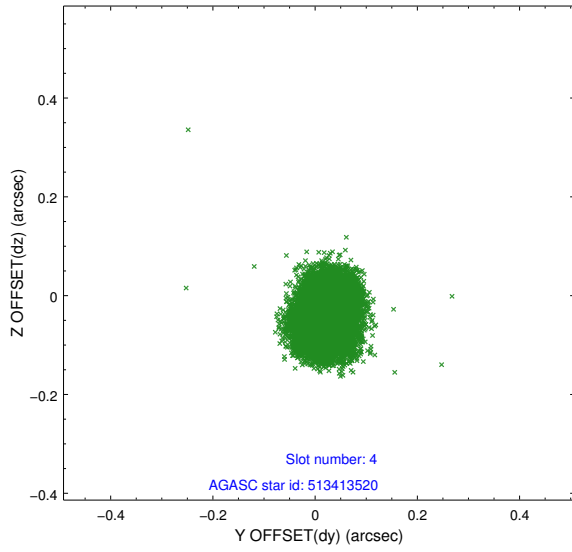
slot	status	id	mag	n_pts	med_dy	med_dz	dr1	dr2	ra	dec	mean_y	mean_z
0	FID	ACIS-S-2	7.11	6860	-0.045	-0.000	0.010	0.015	0.000000	0.000000	-754.37	-1727.60
1	FID	ACIS-S-4	7.20	6860	-0.018	0.022	0.008	0.015	0.000000	0.000000	2158.87	180.85
2	FID	ACIS-S-5	7.24	6856	0.032	-0.013	0.008	0.014	0.000000	0.000000	-1807.04	174.54
3	GUIDE	513417632	6.50	13718	-0.086	0.041	0.056	0.086	279.830663	59.528037	961.94	-1085.88
4	GUIDE	513413520	7.62	13715	0.023	-0.042	0.054	0.085	278.753025	59.267046	-694.13	342.26
5	GUIDE	513420760	9.04	13679	0.047	0.004	0.085	0.133	277.675033	59.117633	-1961.94	1964.99
6	GUIDE	513422640	8.02	13714	-0.029	-0.044	0.084	0.130	277.976729	59.419970	-744.11	1869.25
7	GUIDE	513417880	8.63	13715	0.045	0.045	0.071	0.111	279.584245	59.253862	-123.43	-1077.26

2.4 Star Slots

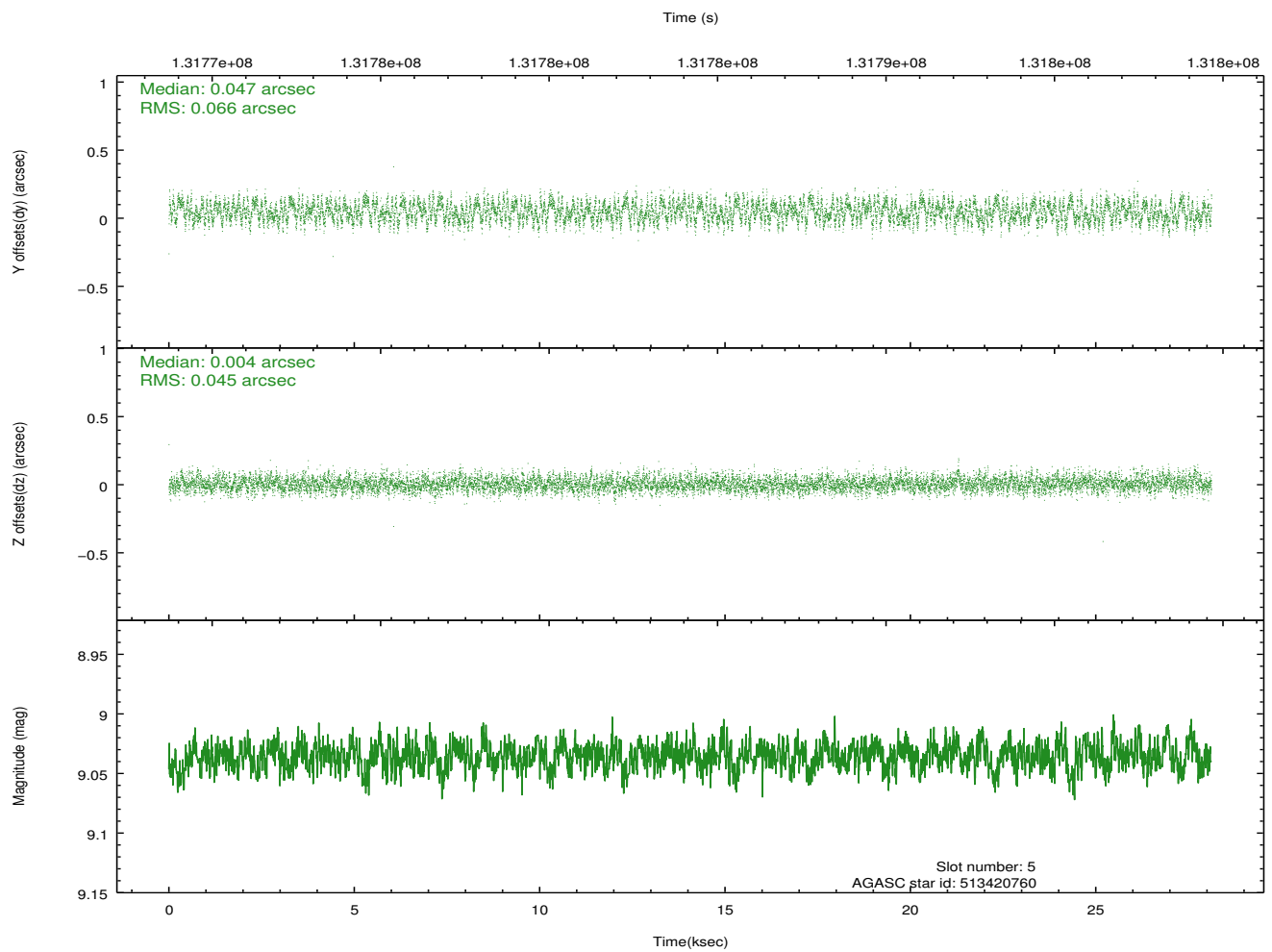
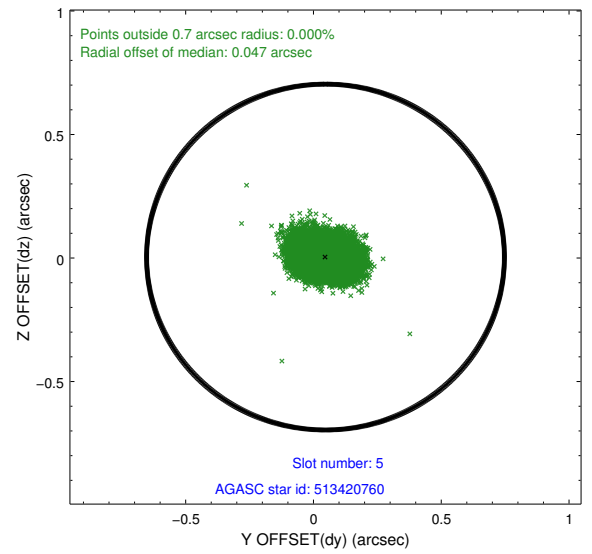
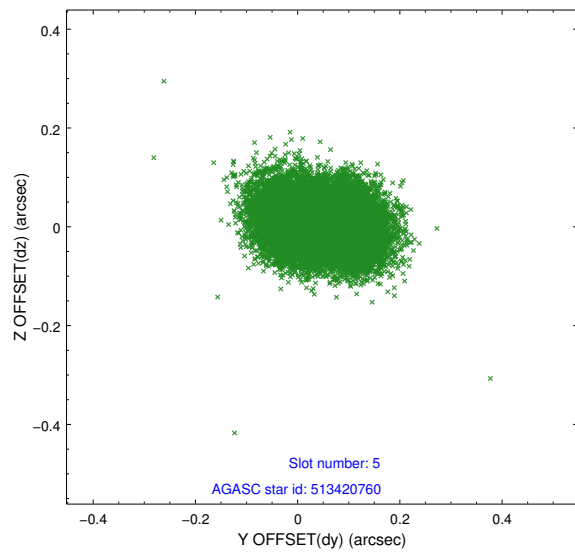
2.4.1 Slot 3



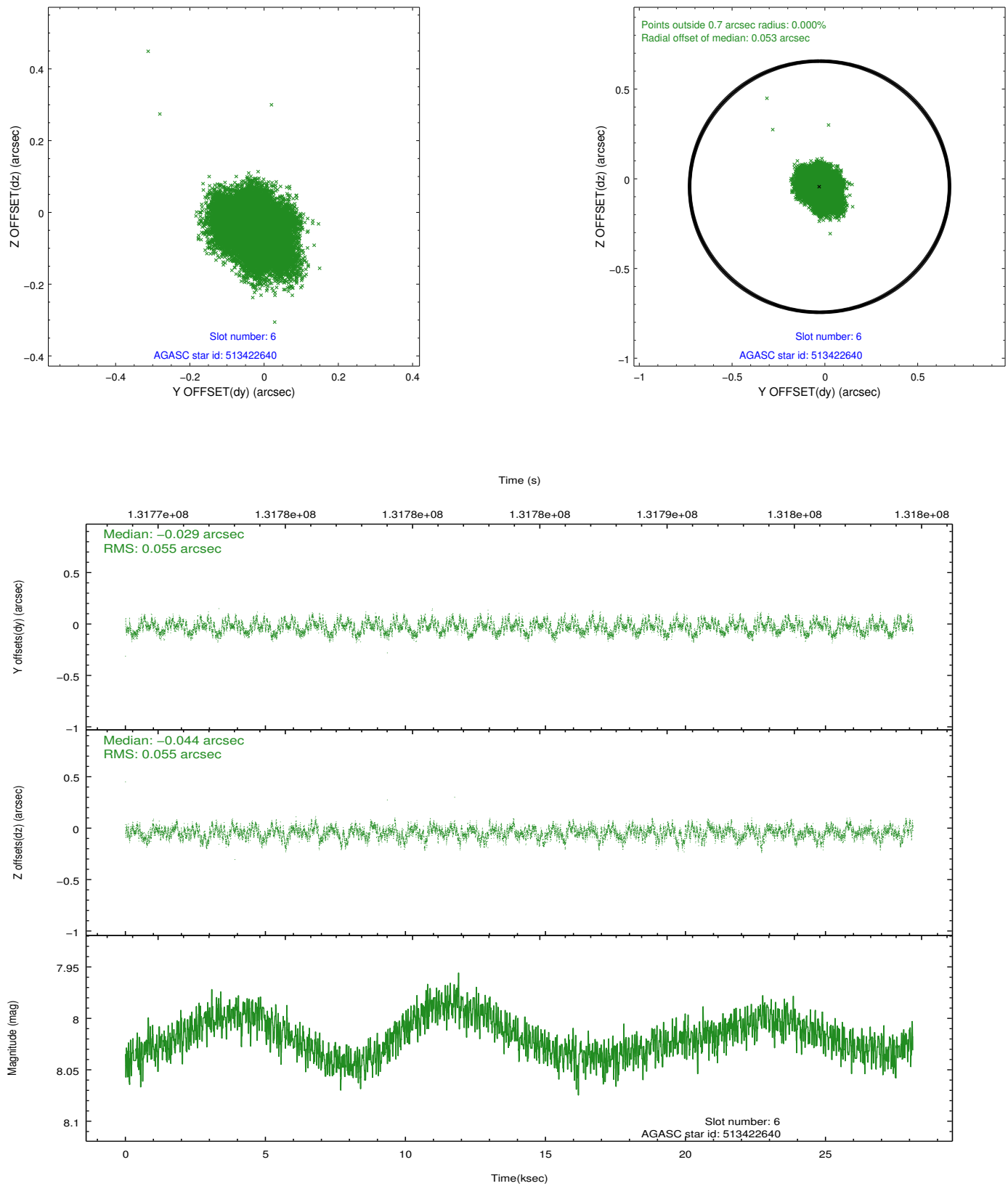
2.4.2 Slot 4



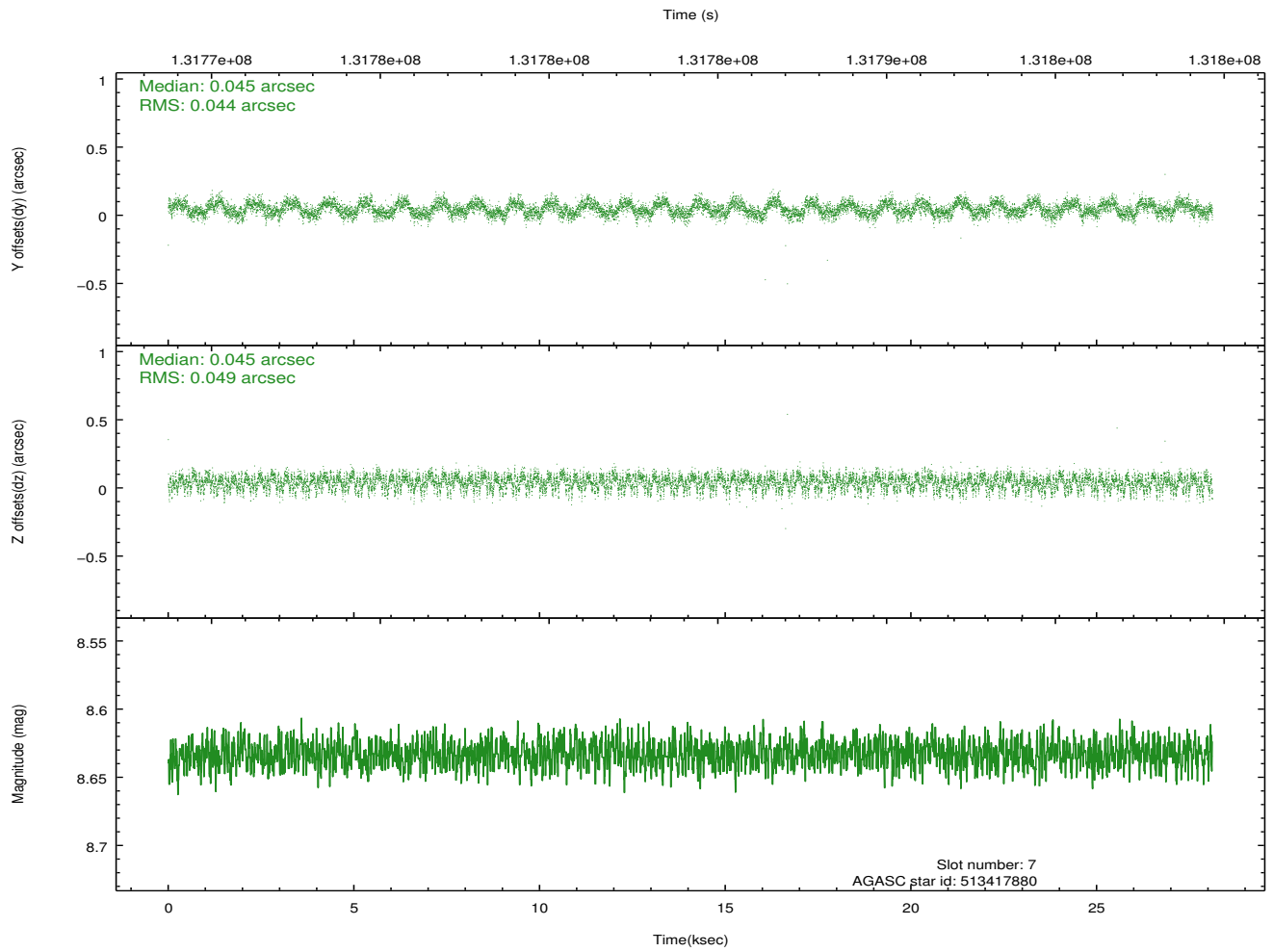
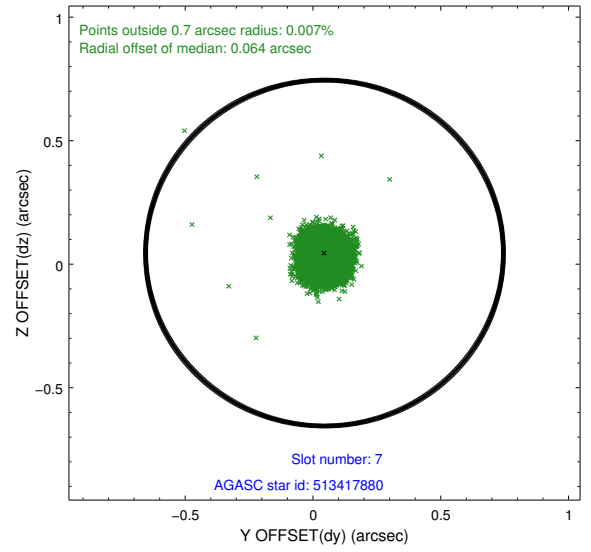
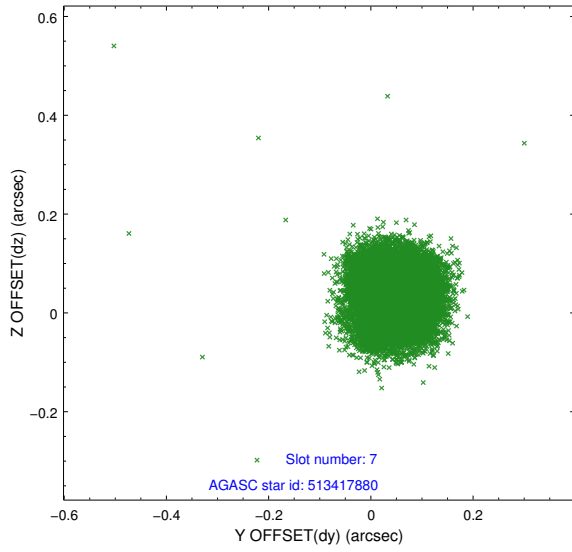
2.4.3 Slot 5



2.4.4 Slot 6

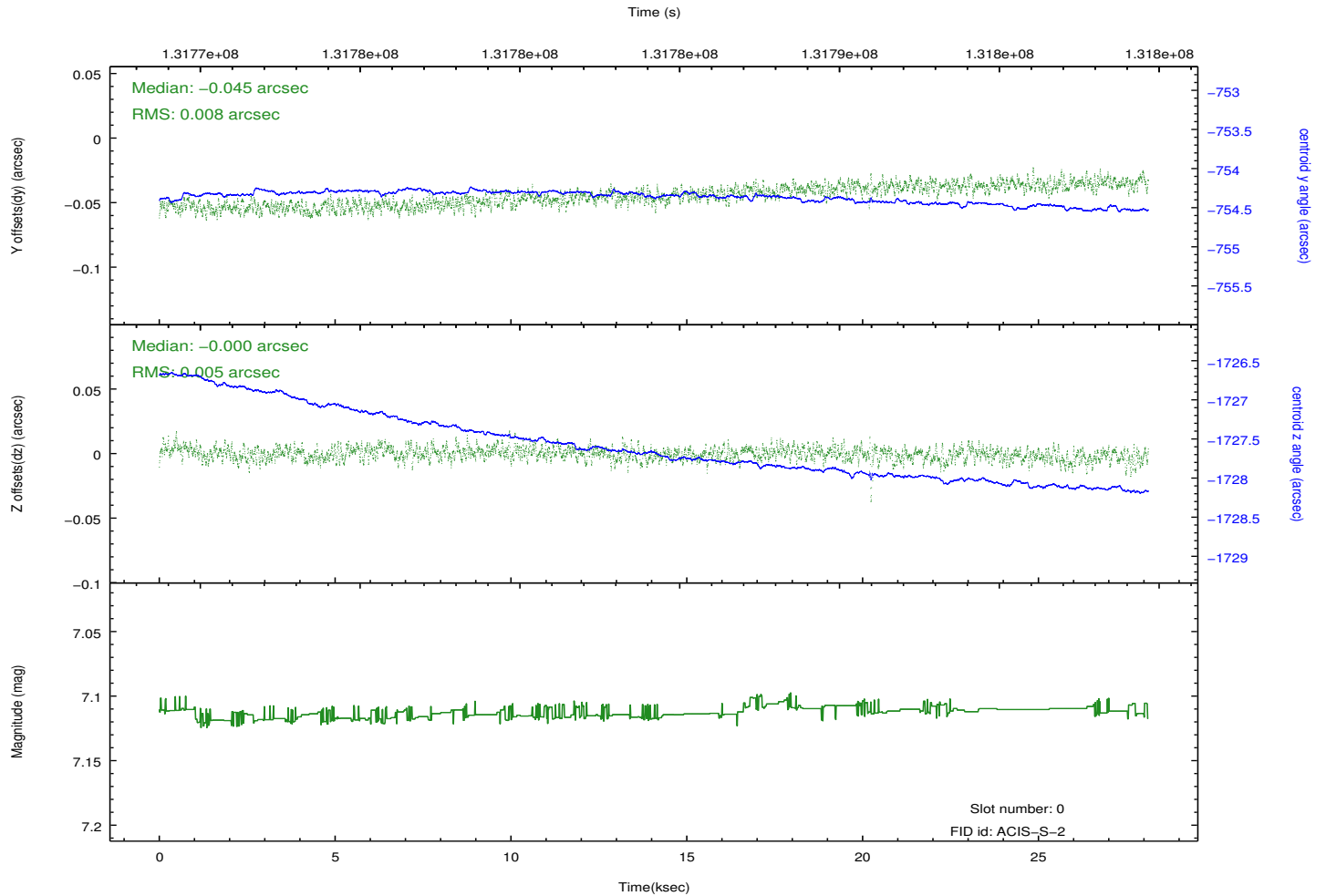
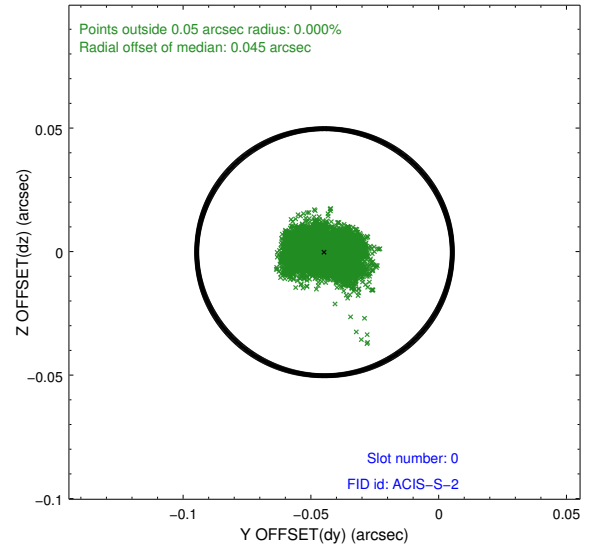
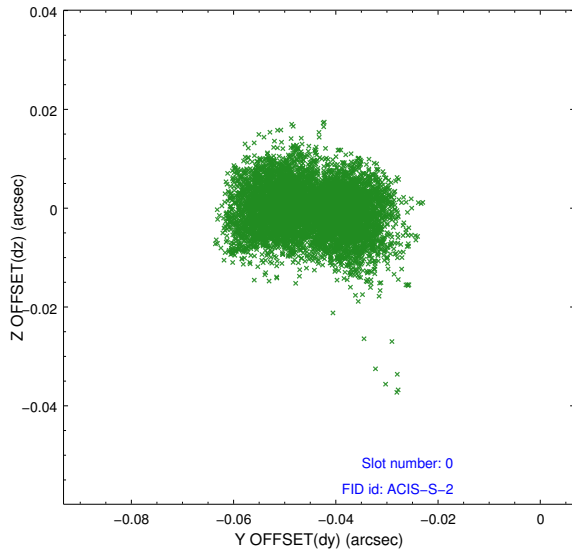


2.4.5 Slot 7

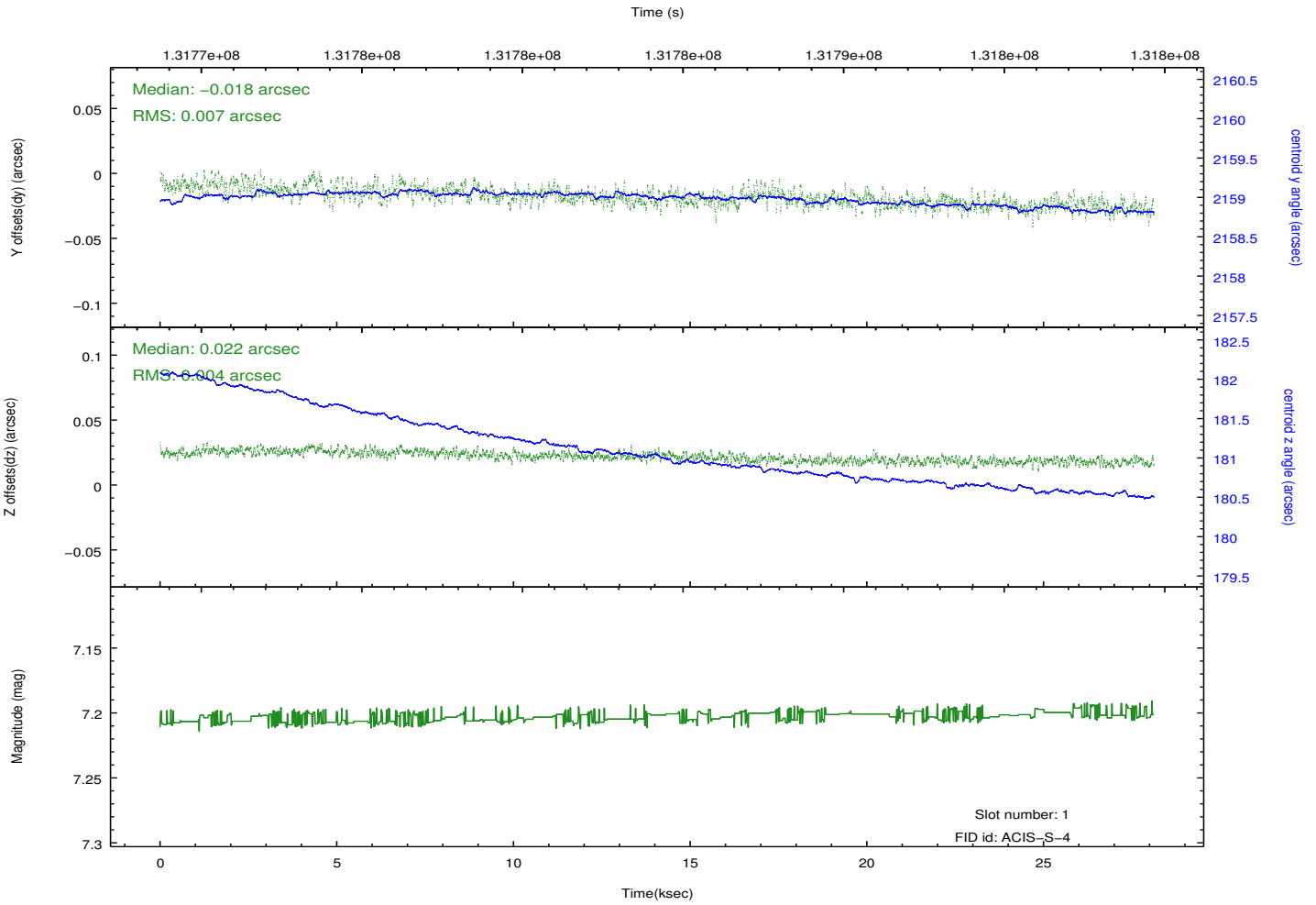
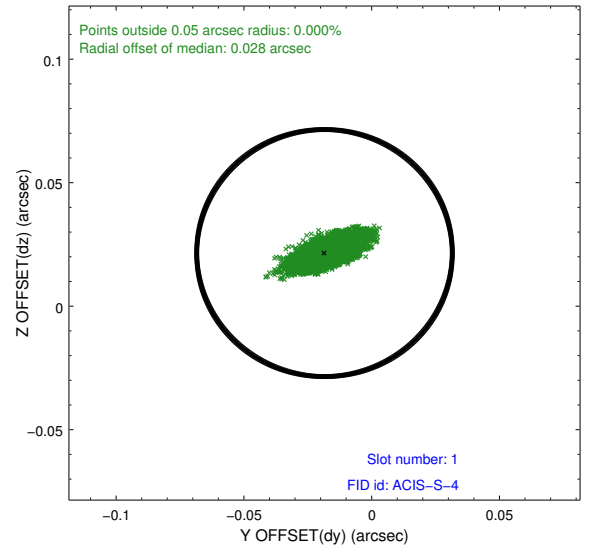
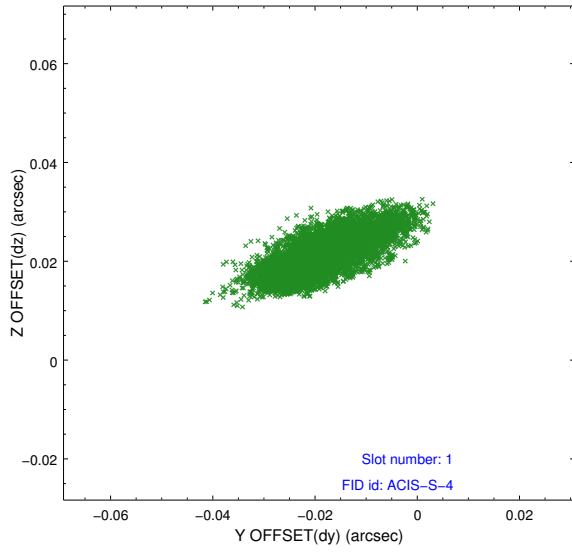


2.5 FID Slots

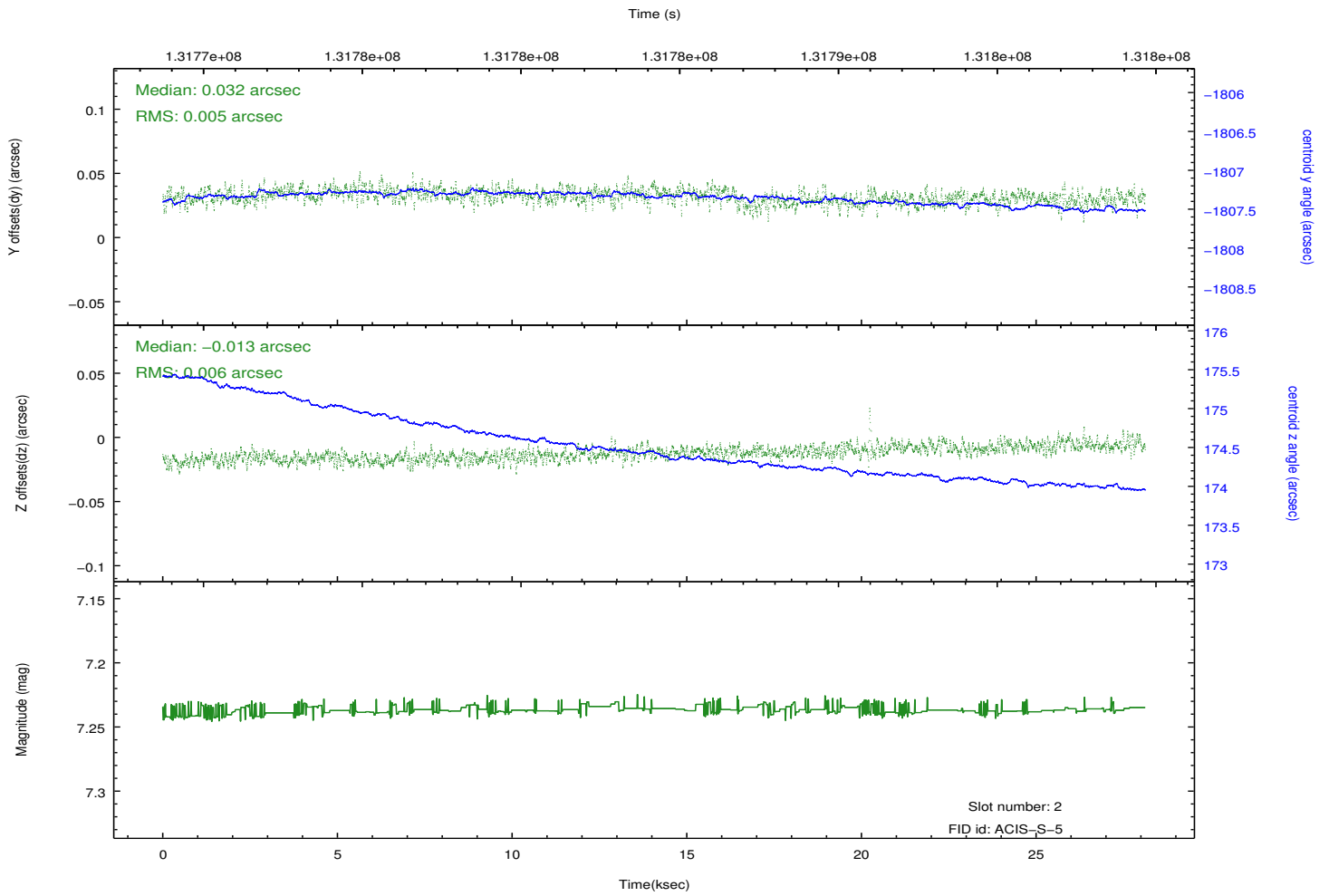
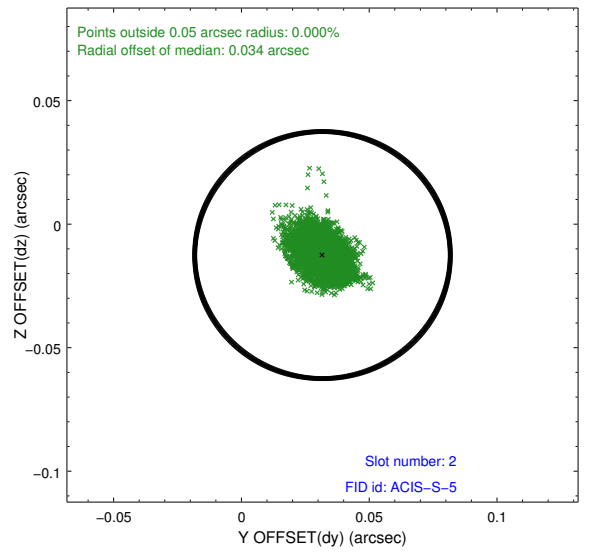
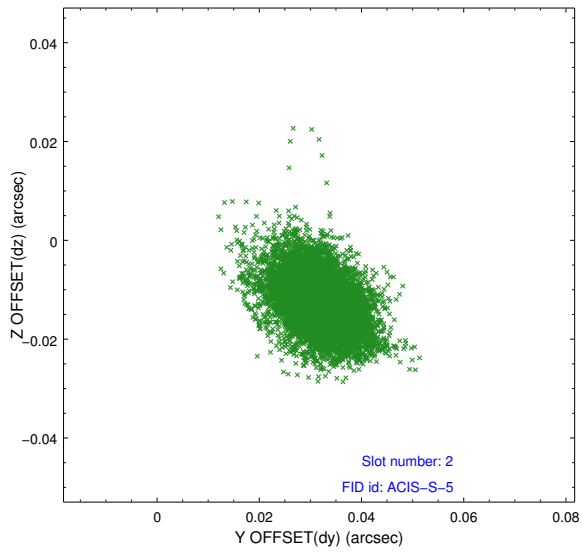
2.5.1 Slot 0



2.5.2 Slot 1



2.5.3 Slot 2



A Summary

A.1 Status

V&V Scientist	Jen Lauer
V&V Date (YYYY-MM-DD)	2012.10.04
V&V Edition	1
V&V Disposition and Status	OK
V&V Charge Time	28.116

A.2 Comments

Joint Proposal: HST