

# V&V Reference Report

## L2 ASCDS Version : 8.4.5

Observation 2874 - L2 Version 4  
Chandra X-Ray Center

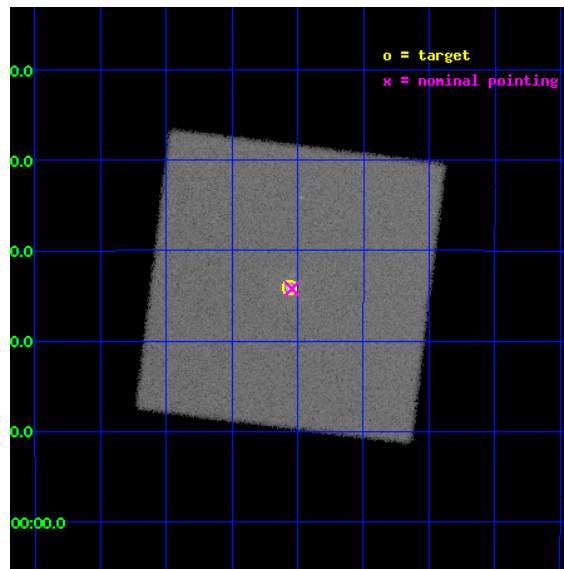
L2 Processing Date : Oct 11 2012

## Contents

<b>1</b>	<b>Front</b>	<b>2</b>
<b>2</b>	<b>OBI</b>	<b>3</b>
2.1	OBI . . . . .	3
2.1.1	Images . . . . .	3
2.1.2	Parameters . . . . .	4
2.1.3	Events . . . . .	4
2.2	Compared Parameters . . . . .	5
2.3	Aspect . . . . .	6
2.4	Star Slots . . . . .	9
2.4.1	Slot 3 . . . . .	9
2.4.2	Slot 4 . . . . .	10
2.4.3	Slot 5 . . . . .	11
2.4.4	Slot 6 . . . . .	12
2.4.5	Slot 7 . . . . .	13
2.5	FID Slots . . . . .	14
2.5.1	Slot 0 . . . . .	14
2.5.2	Slot 1 . . . . .	15
2.5.3	Slot 2 . . . . .	16
<b>A</b>	<b>Summary</b>	<b>17</b>
A.1	Status . . . . .	17
A.2	Comments . . . . .	17

# 1 Front

seq_num	590263	Sequence number
obs_id	2874	Observation id
title	AO3B CALIBRATION OBSERVATIONS THE STANDARD CANDLES CAS A AND G21.5-09	Proposal title
observer	Dr. CXC Calibration	Principal investigator
object	G21.5-0.9 [HRC-I, Offsets=0,0,0]	Source name
ra_targ	278.389583	Observer's specified target RA [deg]
dec_targ	-10.568528	Observer's specified target Dec [deg]
ra_nom	278.38591466403	Nominal RA [deg]
dec_nom	-10.570539449222	Nominal Dec [deg]
roll_nom	232.06402859632	Nominal Roll [deg]
revision	4	Processing version of data
ontime	19870.650816143	[s]
livetime	19762.498602195	Ontime multiplied by DTCOR
l2events	544345	Number of level 2 events

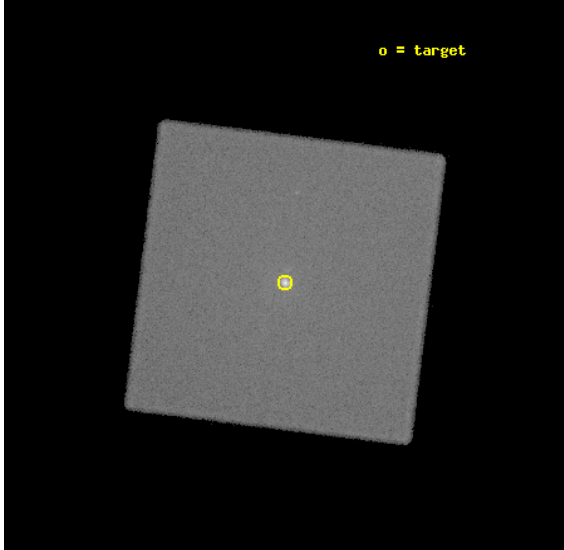


## 2 OBI

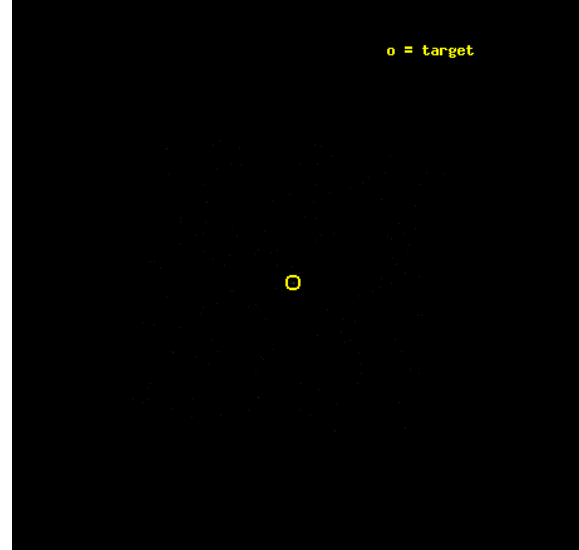
### 2.1 OBI

#### 2.1.1 Images

Level 1 Image



Level 1 Bad Events



### 2.1.2 Parameters

obi_num	0	Obi number	sched_exp_time	20000.000000	[s] Scheduled observation exposure time
ascdsver	8.4.5	Processing system revision	ontime	19870.650816143	[s]
caldbver	4.5.2	&#160	l1events	820973	Number of level 1 events
date	2012-10-11T13:14:53	Date and time of file creation			
revision	4	Processing version of data			

### 2.1.3 Events

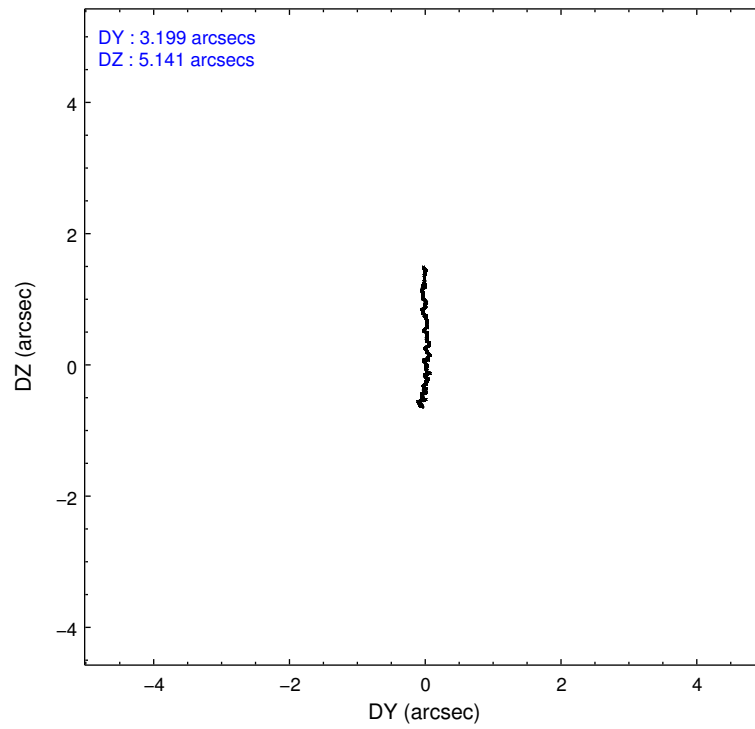
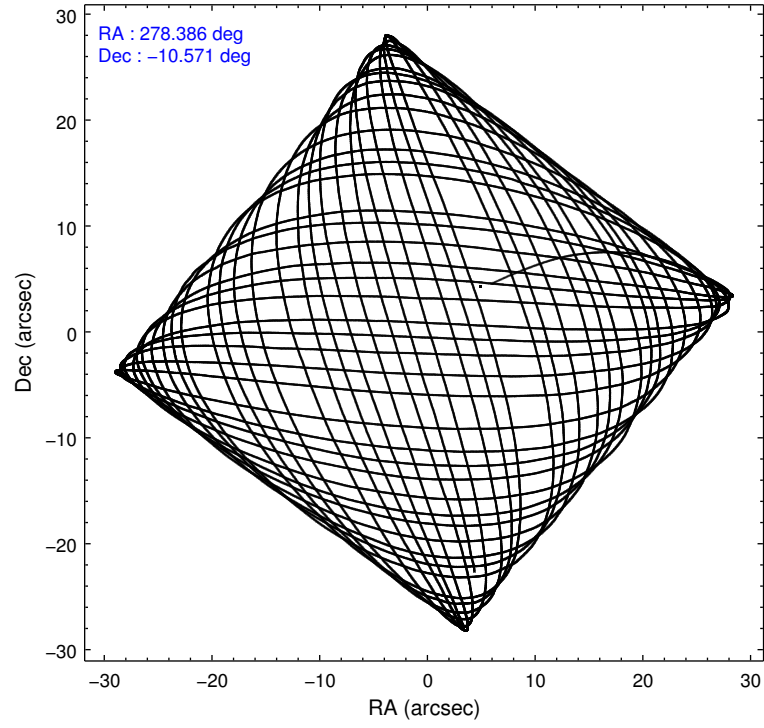
#### Level 1 Events

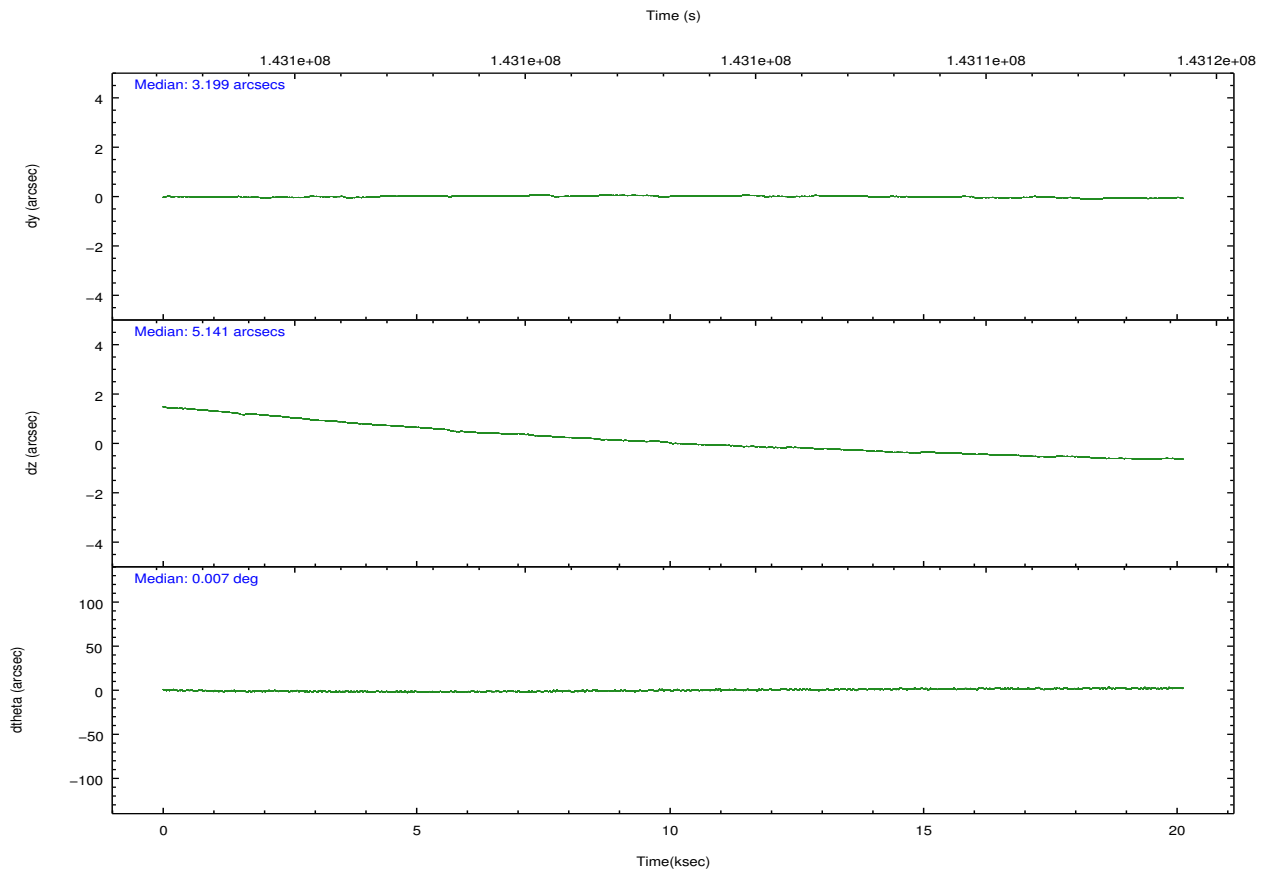
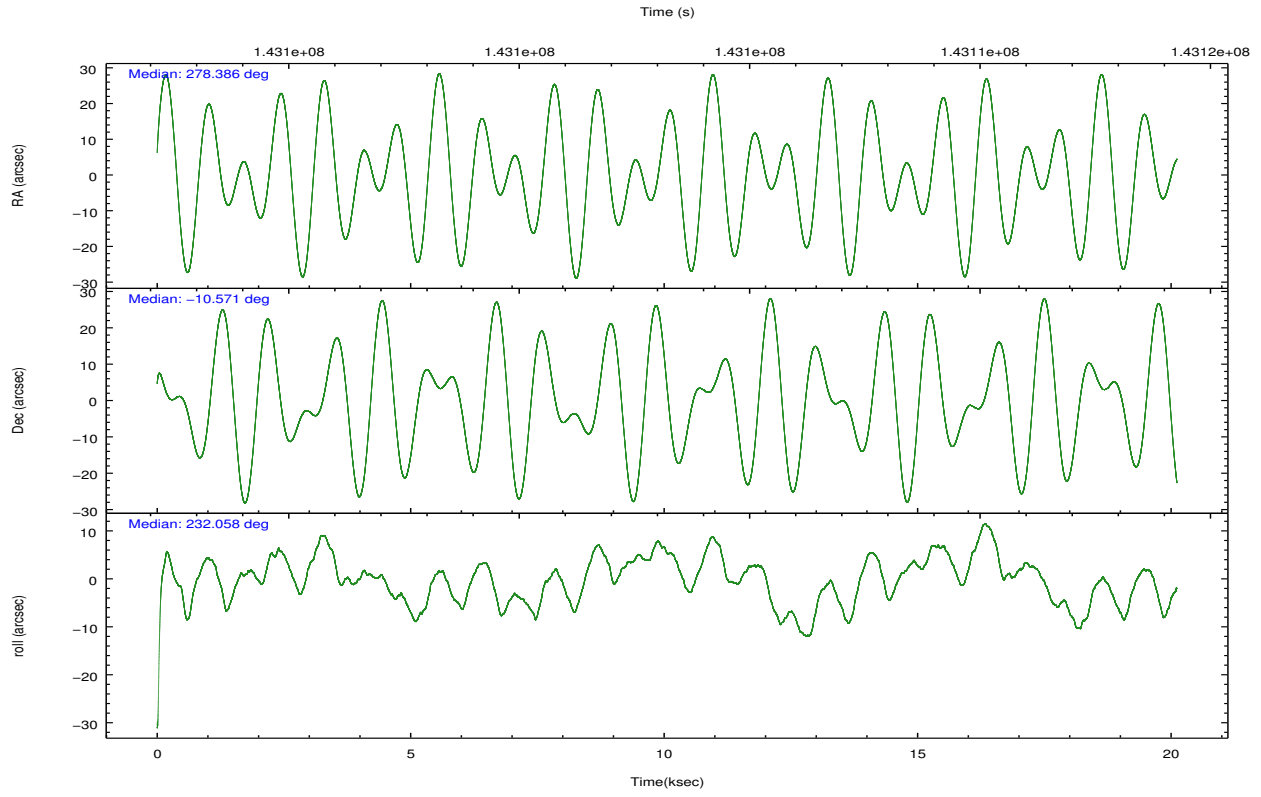
	<b>segment 0</b>
level 1 events	820973
rejected events	3916
rejected %	0%

## 2.2 Compared Parameters

Parameter	Planned	Actual	Parameter	Planned	Actual
Instrument	HRC	HRC	Obspar format version number	7	7
Detector	HRC-I	HRC-I	Obspar file type	PREDICTED	ACTUAL
Grating	NONE	NONE	Obspar update status	NONE	UPDATED
Data mode	OBSERVING	OBSERVING			
Observation mode	POINTING	POINTING			
[deg] Pointing RA	278.389060	278.3859146640275			
[deg] Pointing Dec	-10.543646	-10.57053944922238			
[deg] Pointing Roll	232.160113	232.0640285963212			
[s] Window start time (MET)	141868864.184000	141868864.184000			
[s] Window stop time (MET)	144460864.184000	144460864.184000			
[mm] SIM focus pos	-1.040293	-1.038866356238299			
[mm] SIM defocus	0	0.001426264420575141			
[mm] SIM translation stage pos	126.985494	126.9829799899862			
[mm] SIM translation stage offset	0	0.002508901615314585			
[s] Observation start time (MET)	143093267.184000	143092226.88417			
Observation start date	2002-07-15T04:06:43	2002-07-15T03:50:26			
[s] Observation end time (MET)	143113267.184000	143113814.92256			
Observation end date	2002-07-15T09:40:03	2002-07-15T09:50:14			

## 2.3 Aspect



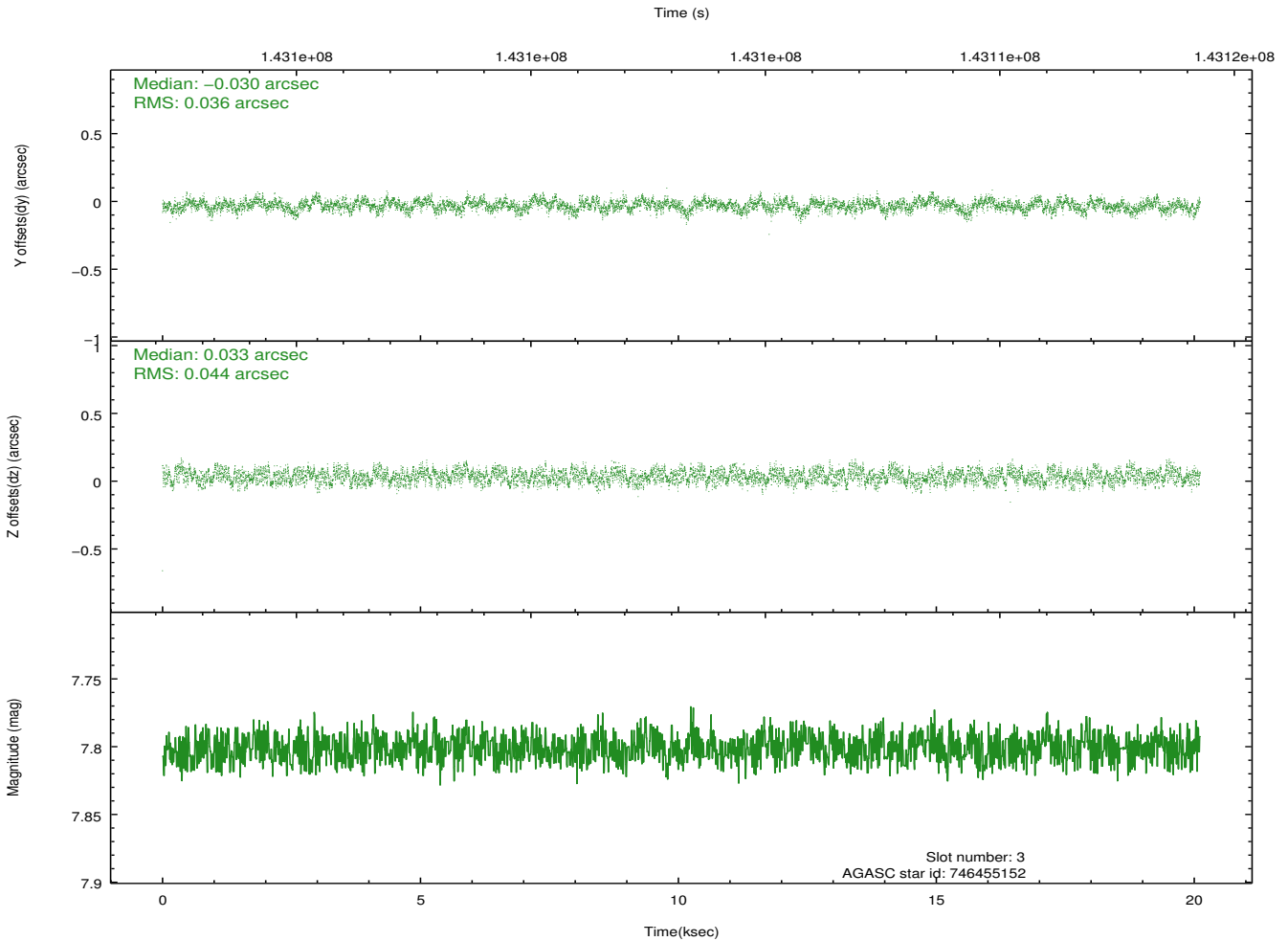
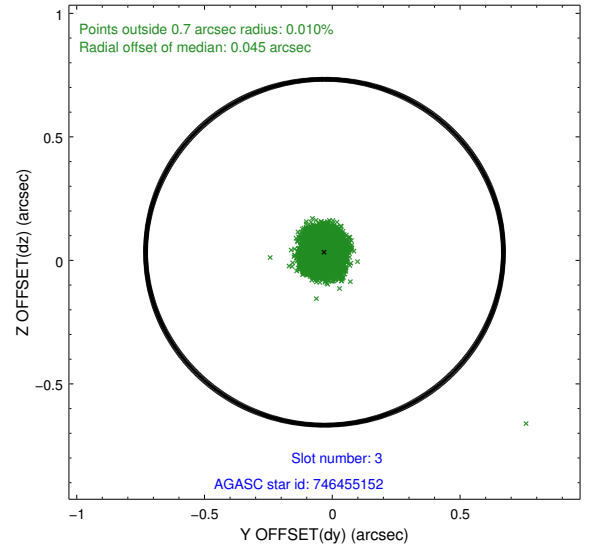
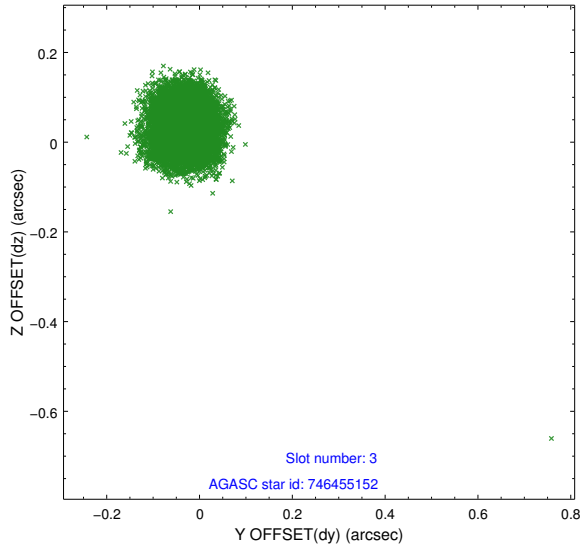


### Slot Statistics

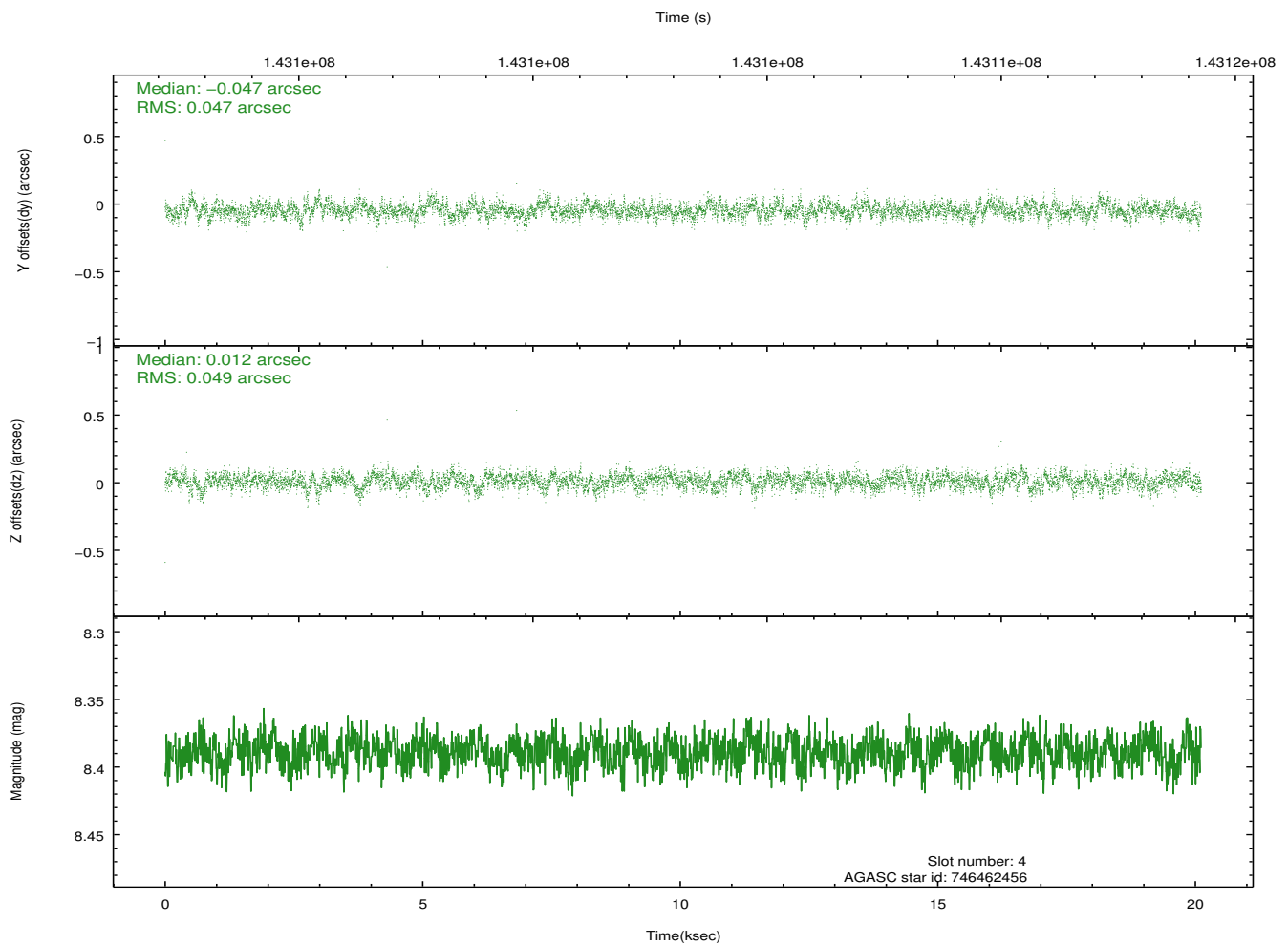
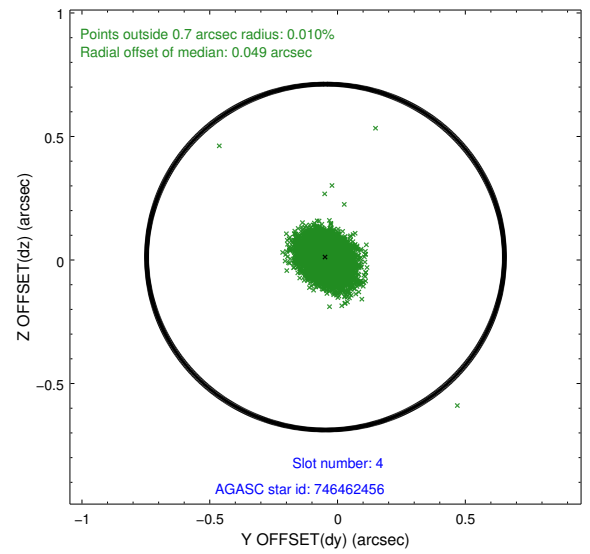
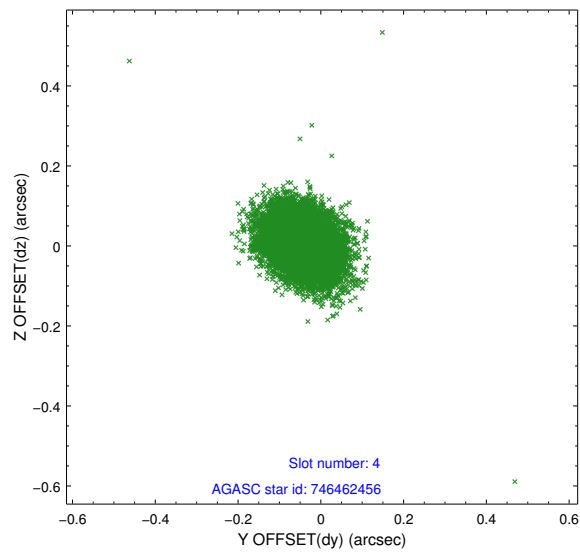
slot	status	id	mag	n_pts	med_dy	med_dz	dr1	dr2	ra	dec	mean_y	mean_z
0	FID	HRC-I-1	6.98	4907	0.001	0.043	0.024	0.043	0.000000	0.000000	-758.64	-1293.08
1	FID	HRC-I-2	7.02	4906	0.078	-0.044	0.014	0.025	0.000000	0.000000	853.91	-1294.96
2	FID	HRC-I-3	7.07	4907	0.040	-0.087	0.014	0.035	0.000000	0.000000	-1186.97	1011.09
3	GUIDE	746455152	7.80	9814	-0.030	0.033	0.061	0.095	278.447893	-9.976732	-1739.71	-1087.31
4	GUIDE	746462456	8.39	9814	-0.047	0.012	0.071	0.116	278.652171	-10.530173	-609.42	706.14
5	GUIDE	746460272	8.91	9804	0.003	-0.080	0.072	0.117	278.847488	-10.152127	-2108.92	418.90
6	GUIDE	746460328	9.80	9798	0.048	0.045	0.122	0.203	278.603974	-9.898096	-2302.68	-823.55
7	GUIDE	746461728	9.78	9797	0.025	-0.011	0.122	0.196	278.986921	-10.530755	-1333.65	1643.77

## 2.4 Star Slots

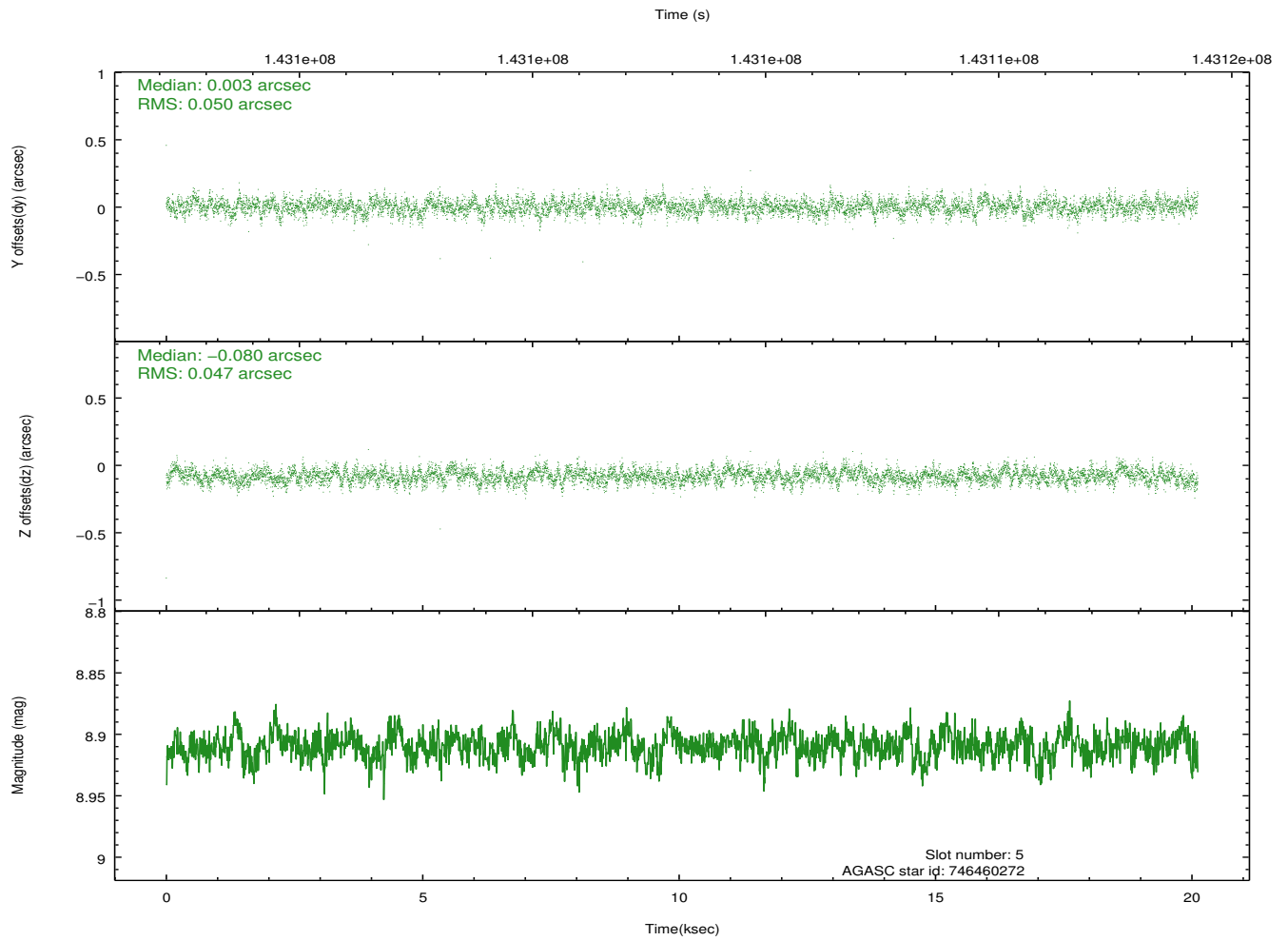
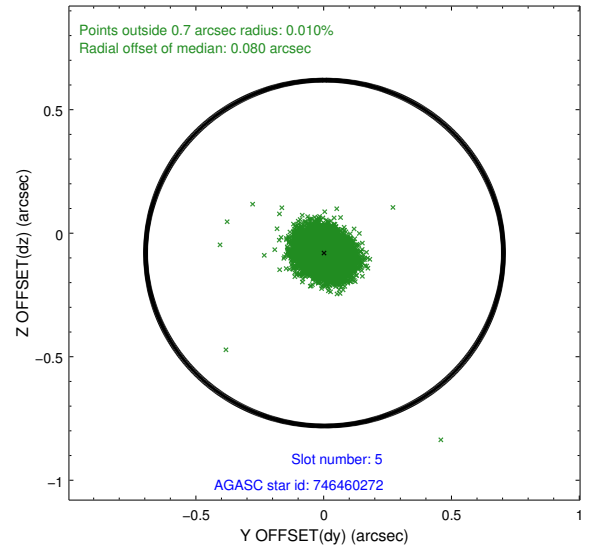
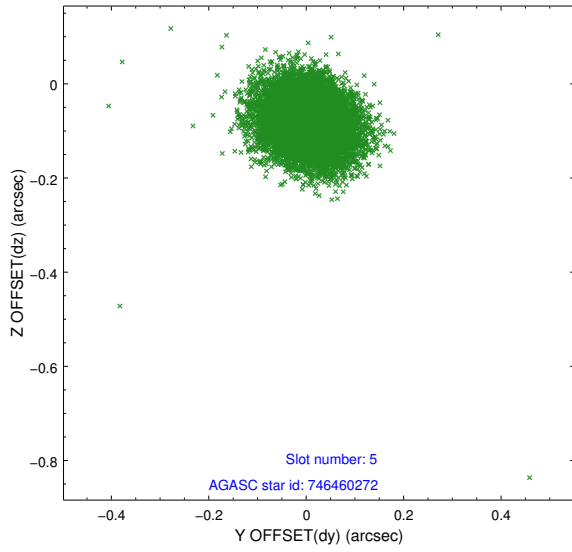
### 2.4.1 Slot 3



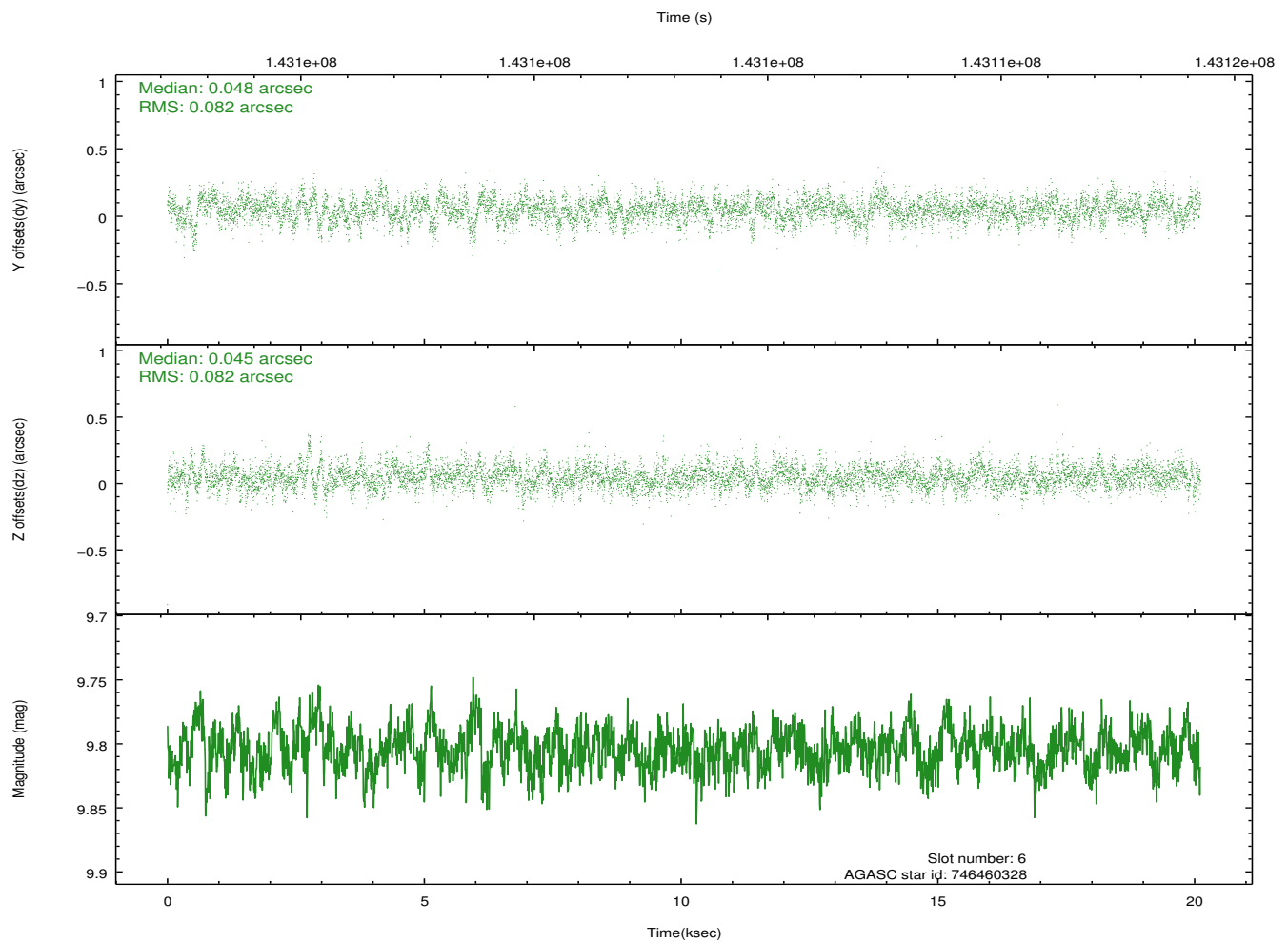
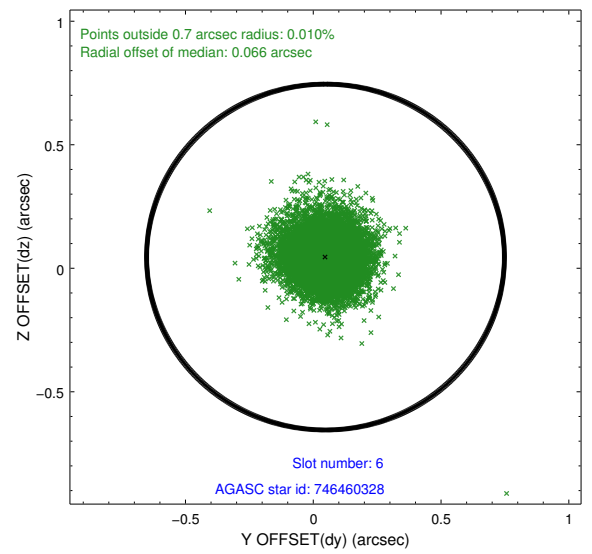
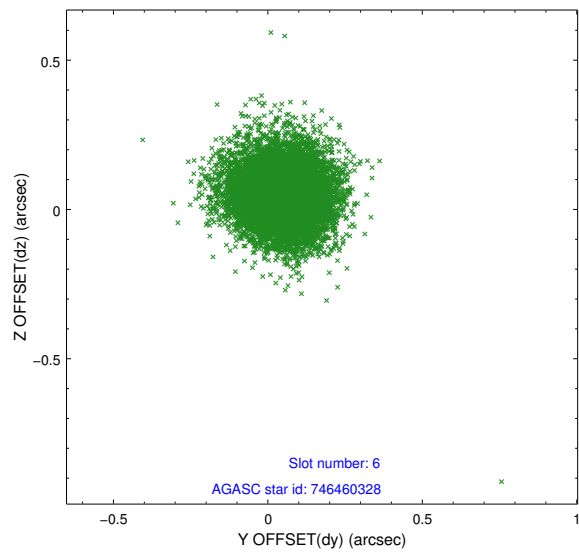
## 2.4.2 Slot 4



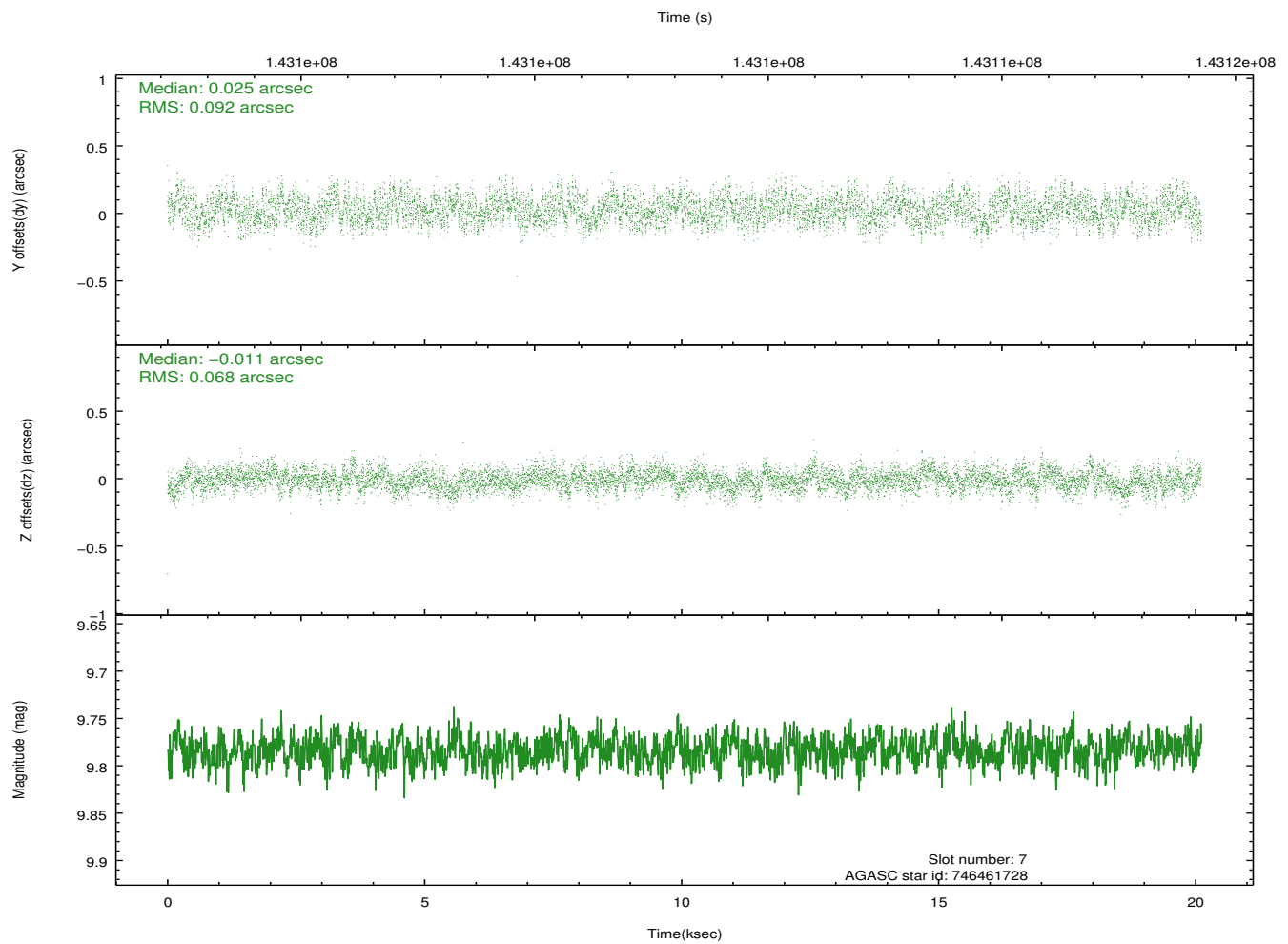
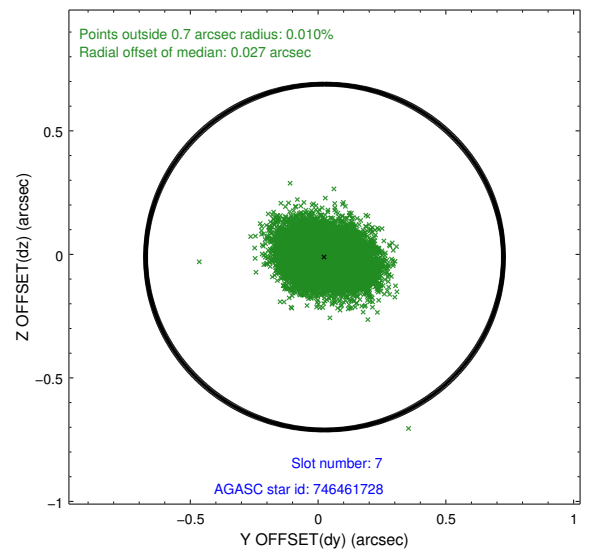
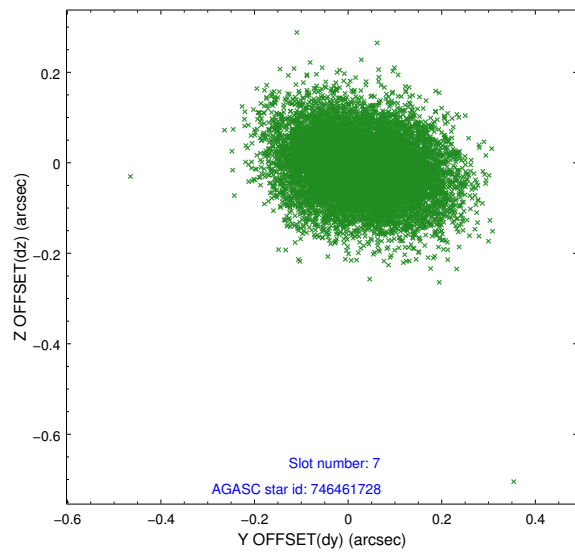
### 2.4.3 Slot 5



## 2.4.4 Slot 6

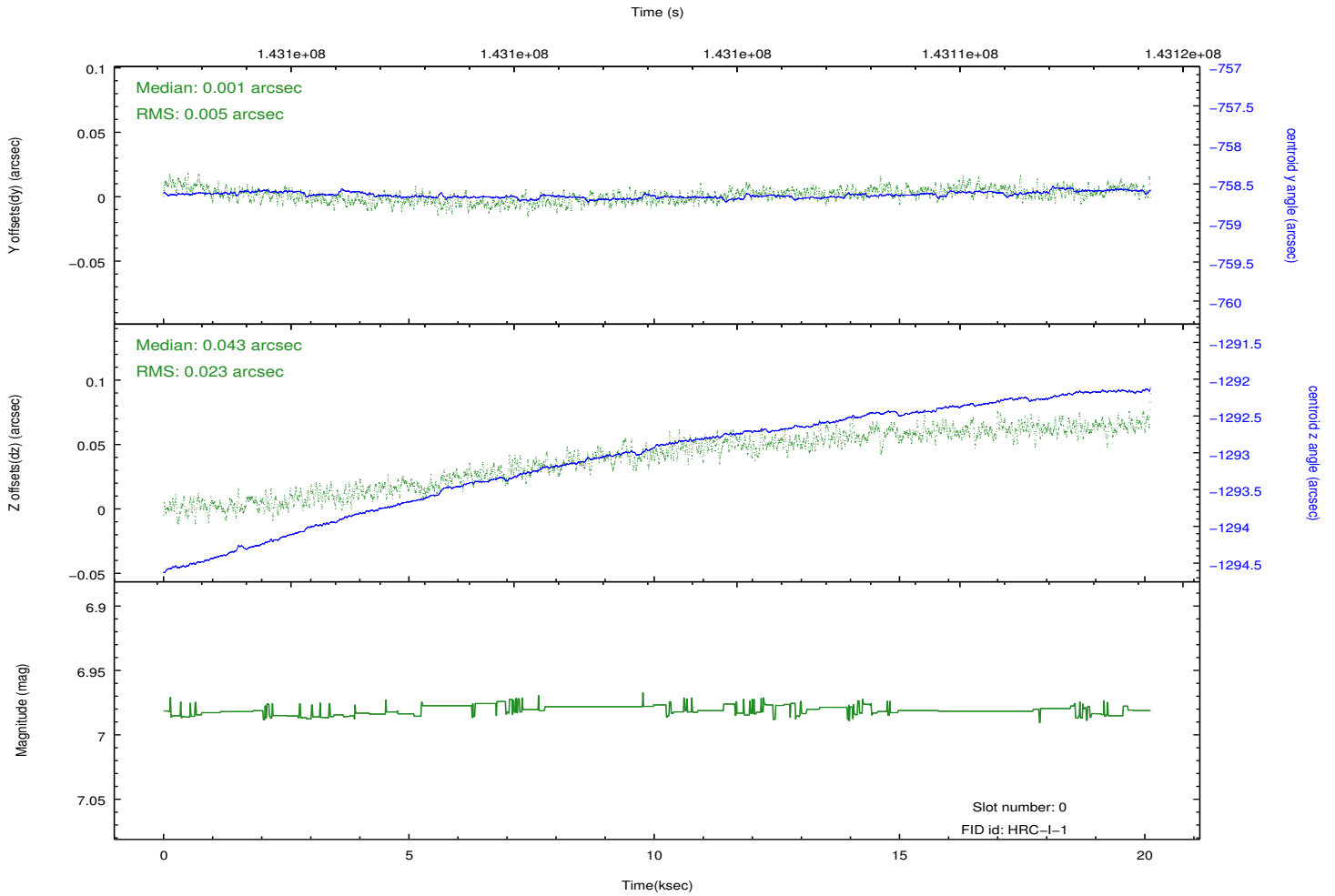
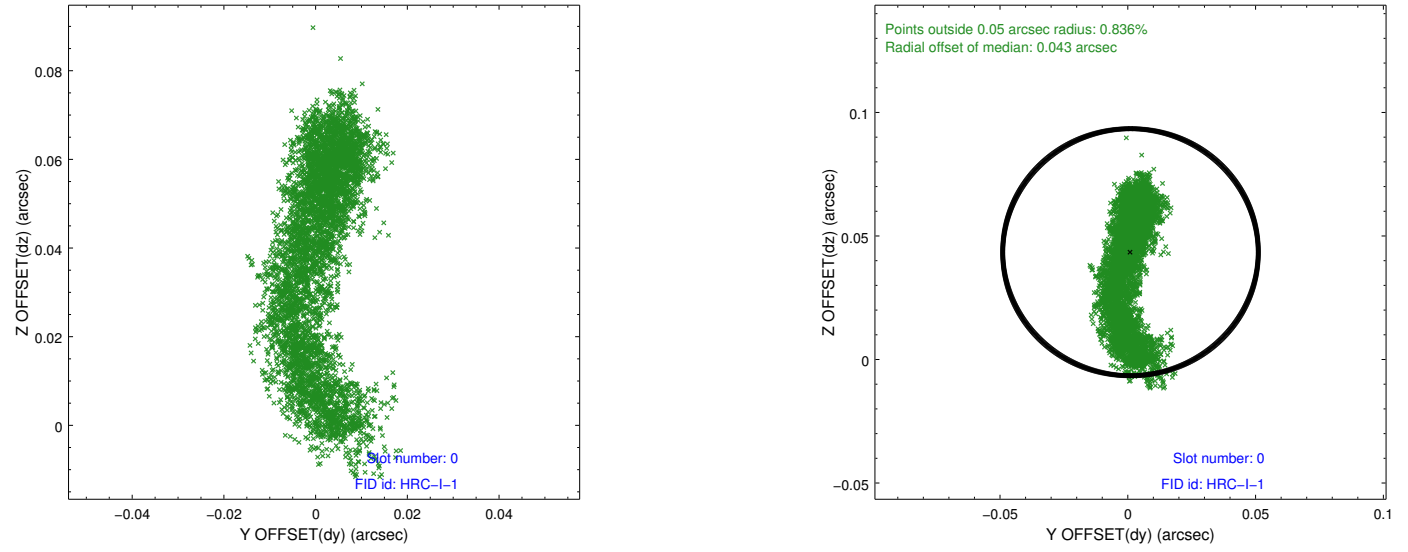


## 2.4.5 Slot 7

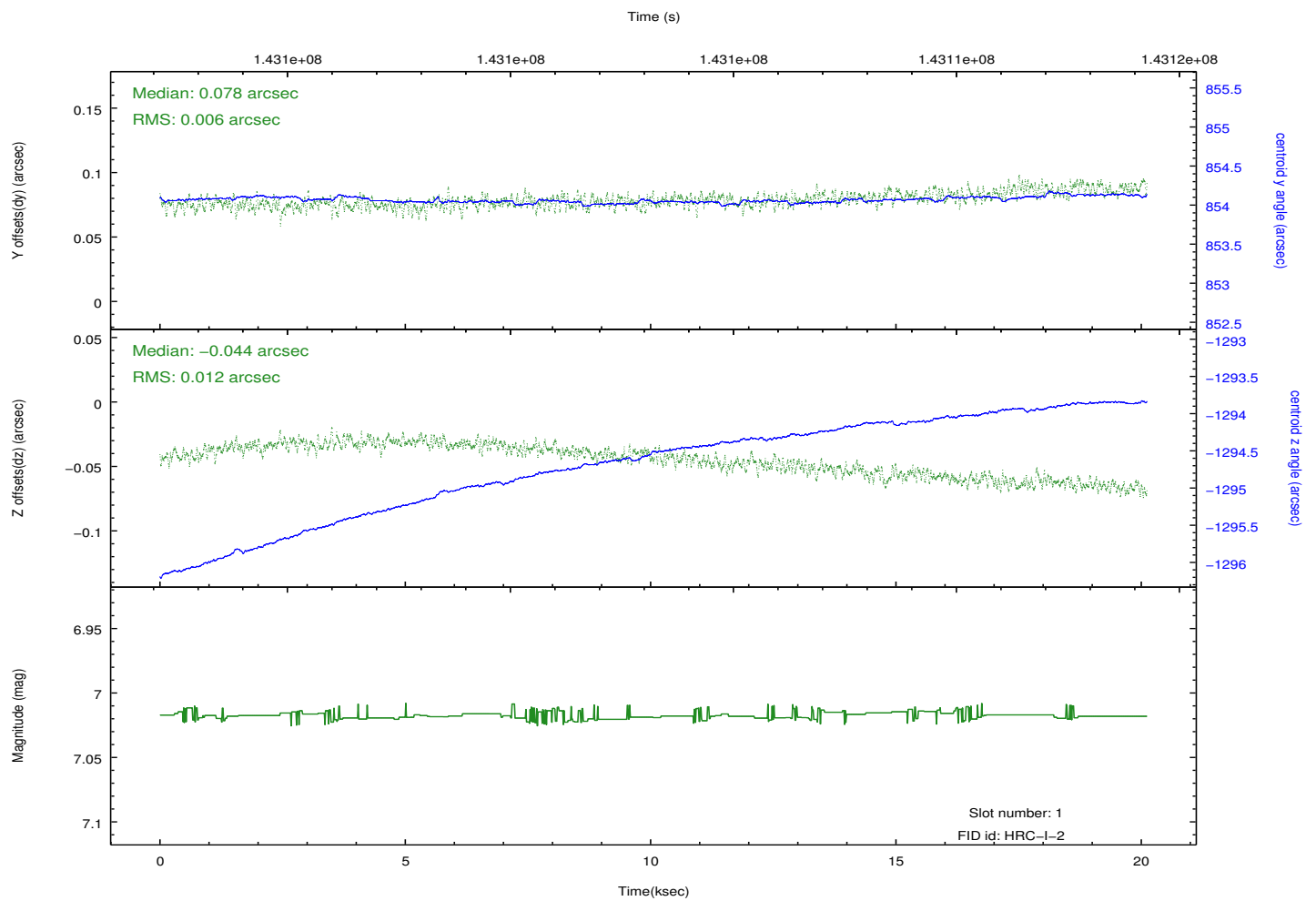
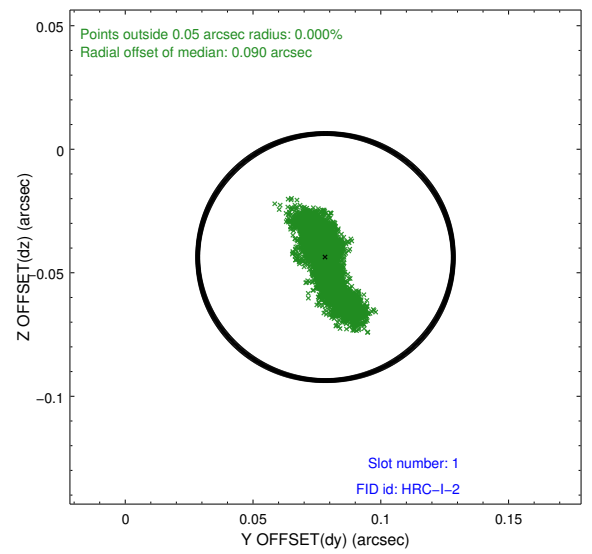
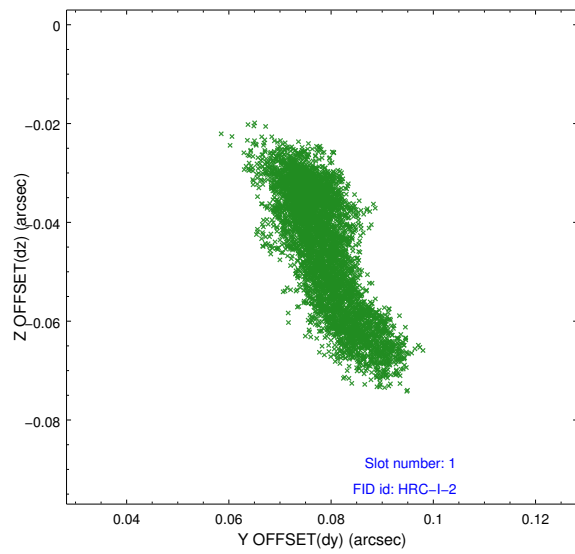


## 2.5 FID Slots

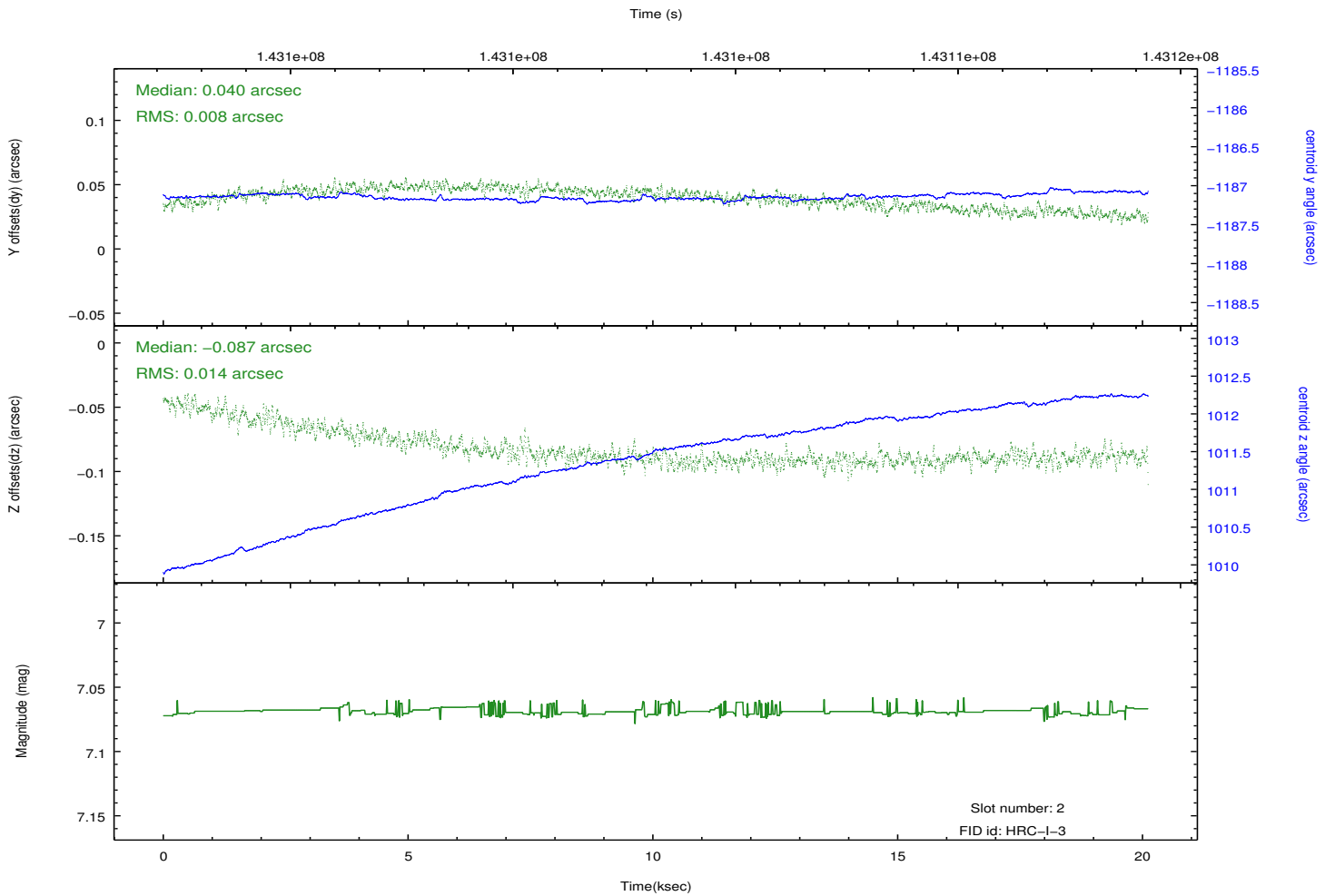
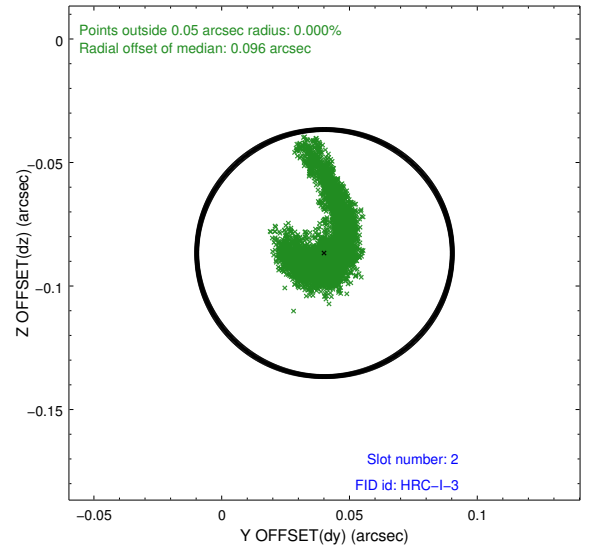
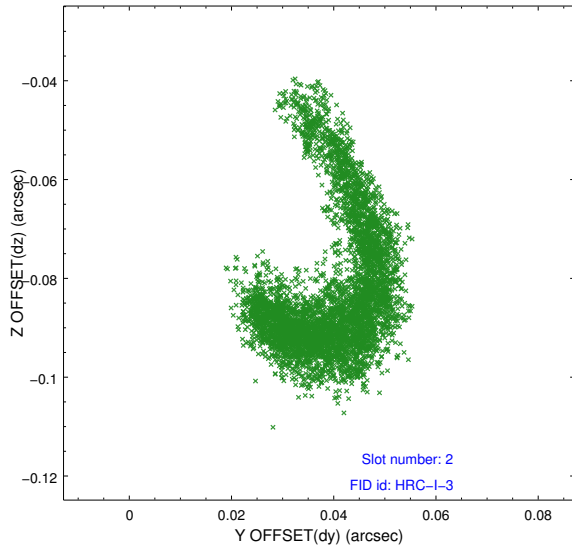
### 2.5.1 Slot 0



## 2.5.2 Slot 1



### 2.5.3 Slot 2



# A Summary

## A.1 Status

V&V Scientist	Beth Sundheim
V&V Date (YYYY-MM-DD)	2012.10.21
V&V Edition	1
V&V Disposition and Status	OK
V&V Charge Time	19.87

## A.2 Comments

Window preference met.