

V&V Reference Report

L2 ASCDS Version : 8.4.5

Observation 3214 - L2 Version 3
Chandra X-Ray Center

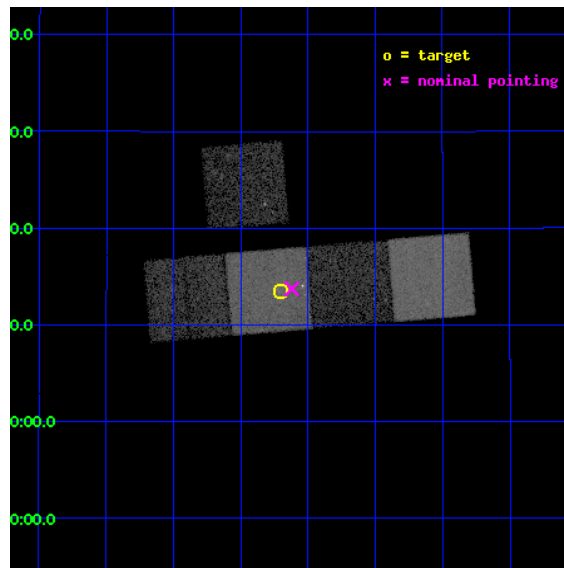
L2 Processing Date : Oct 8 2012

Contents

1	Front	2
2	OBI	3
2.1	OBI	3
2.1.1	Images	3
2.1.2	Bias	3
2.1.3	Parameters	4
2.1.4	Events	4
2.2	Compared Parameters	5
2.3	Aspect	6
2.4	Star Slots	9
2.4.1	Slot 3	9
2.4.2	Slot 4	10
2.4.3	Slot 5	11
2.4.4	Slot 6	12
2.4.5	Slot 7	13
2.5	FID Slots	14
2.5.1	Slot 0	14
2.5.2	Slot 1	15
2.5.3	Slot 2	16
A	Summary	17
A.1	Status	17
A.2	Comments	17

1 Front

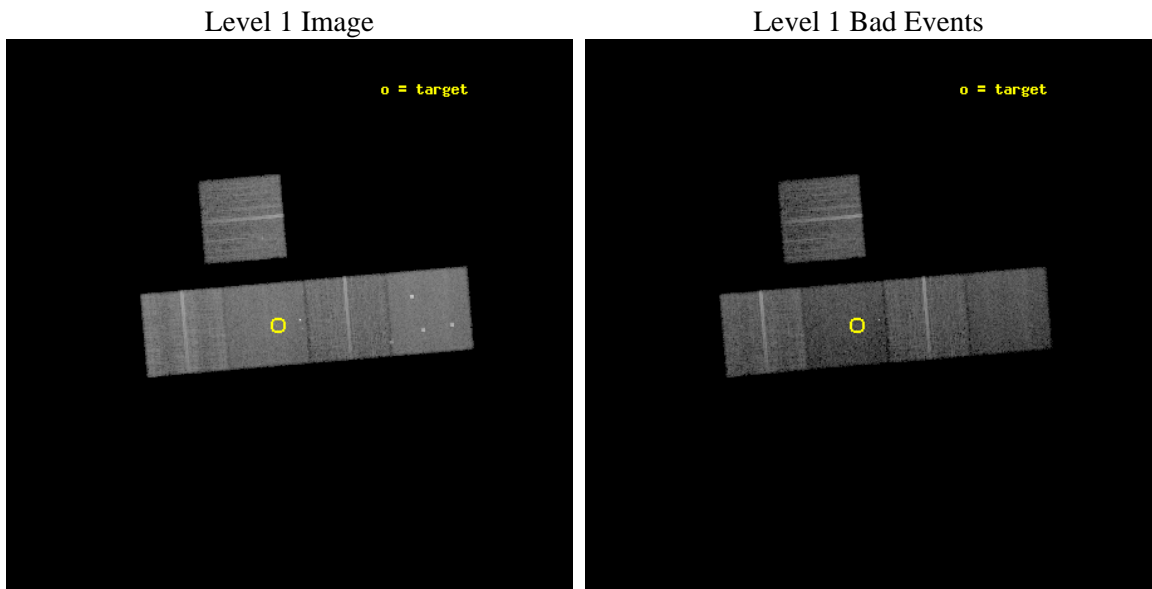
seq_num	800214	Sequence number
obs_id	3214	Observation id
title	THE X-RAY STRUCTURE OF OLD, HIGH LUMINOSITY FOSSIL GALAXY GROUPS	P
observer	Dr Laurence Jones	Principal investigator
object	RXJ1552.2+2013	Source name
dtycycle	0	
cycle	P	events from which exps? Prim/Second/Both
ra_targ	238.052083	Observer's specified target RA [deg]
dec_targ	20.225556	Observer's specified target Dec [deg]
ra_nom	238.03023086989	Nominal RA [deg]
dec_nom	20.229020439965	Nominal Dec [deg]
roll_nom	175.13177208029	Nominal Roll [deg]
revision	3	Processing version of data
ontime	15131.099970877	Sum of GTIs [s]
livetime	14933.401010404	Livetime [s]
ontime3	15131.099970877	Sum of GTIs [s]
ontime5	15131.099970877	Sum of GTIs [s]
ontime6	15131.099970877	Sum of GTIs [s]
ontime7	15131.099970877	Sum of GTIs [s]
ontime8	15131.099970877	Sum of GTIs [s]
l2events	118474	Number of level 2 events



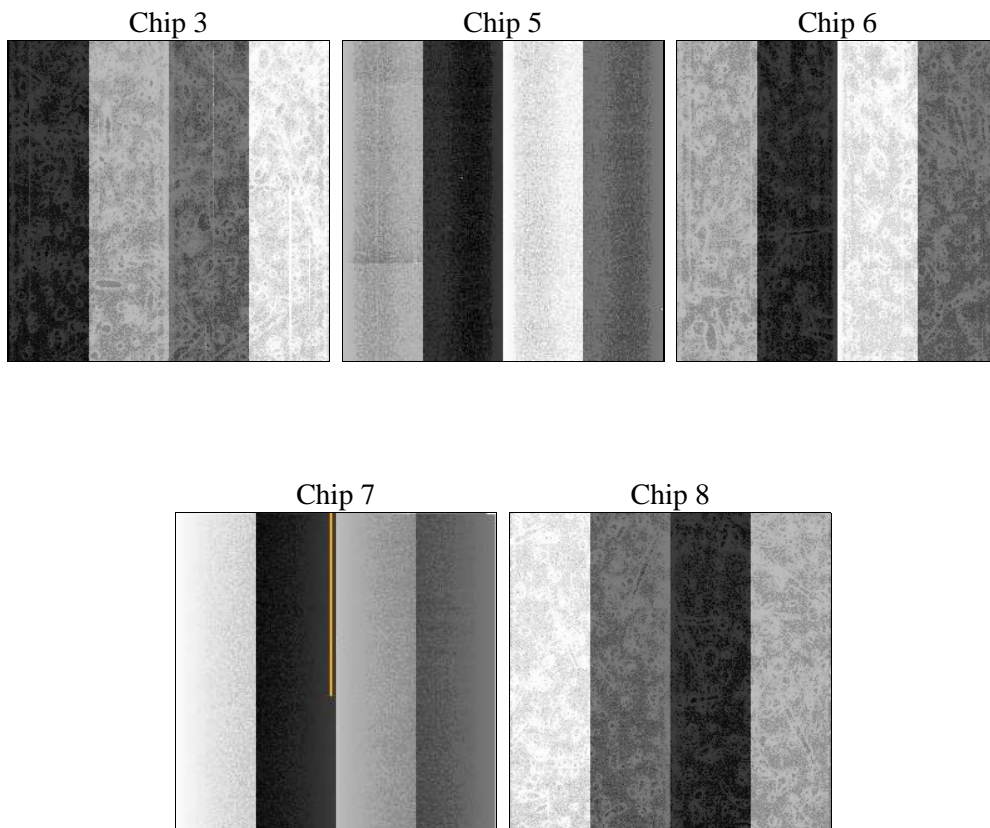
2 OBI

2.1 OBI

2.1.1 Images



2.1.2 Bias



2.1.3 Parameters

obi_num	1	Obi number	sched_exp_time	15000.000000	[s] Scheduled observation exposure time
ascdsver	8.4.5	Processing system revision	ontime	15131.099970877	Sum of GTIs [s]
caldbver	4.5.2	 	ontime3	15131.099970877	Sum of GTIs [s]
date	2012-10-08T05:44:56	Date and time of file creation	ontime5	15131.099970877	Sum of GTIs [s]
revision	3	Processing version of data	ontime6	15131.099970877	Sum of GTIs [s]
			ontime7	15131.099970877	Sum of GTIs [s]
			ontime8	15131.099970877	Sum of GTIs [s]
			l1events	497269	Number of level 1 events

2.1.4 Events

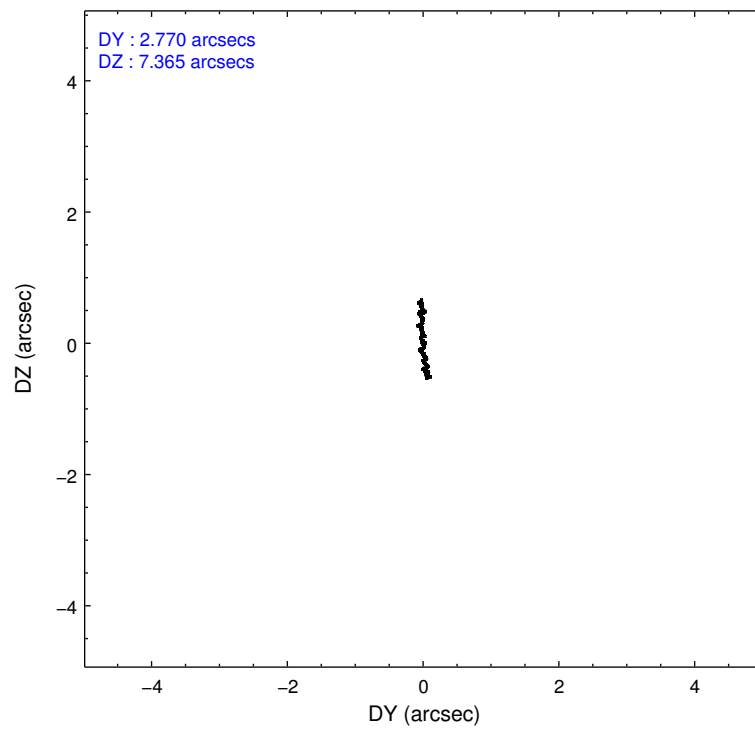
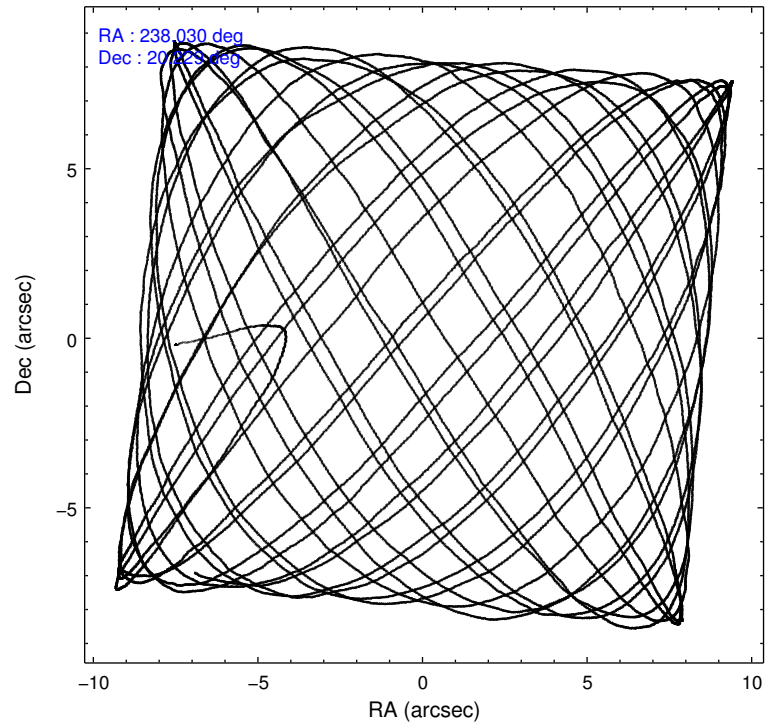
	ccd 3	ccd 5	ccd 6	ccd 7	ccd 8
level 1 events	84626	115202	86029	96554	114858
rejected events	76739	57239	76984	50478	85022
rejected %	90%	49%	89%	52%	74%

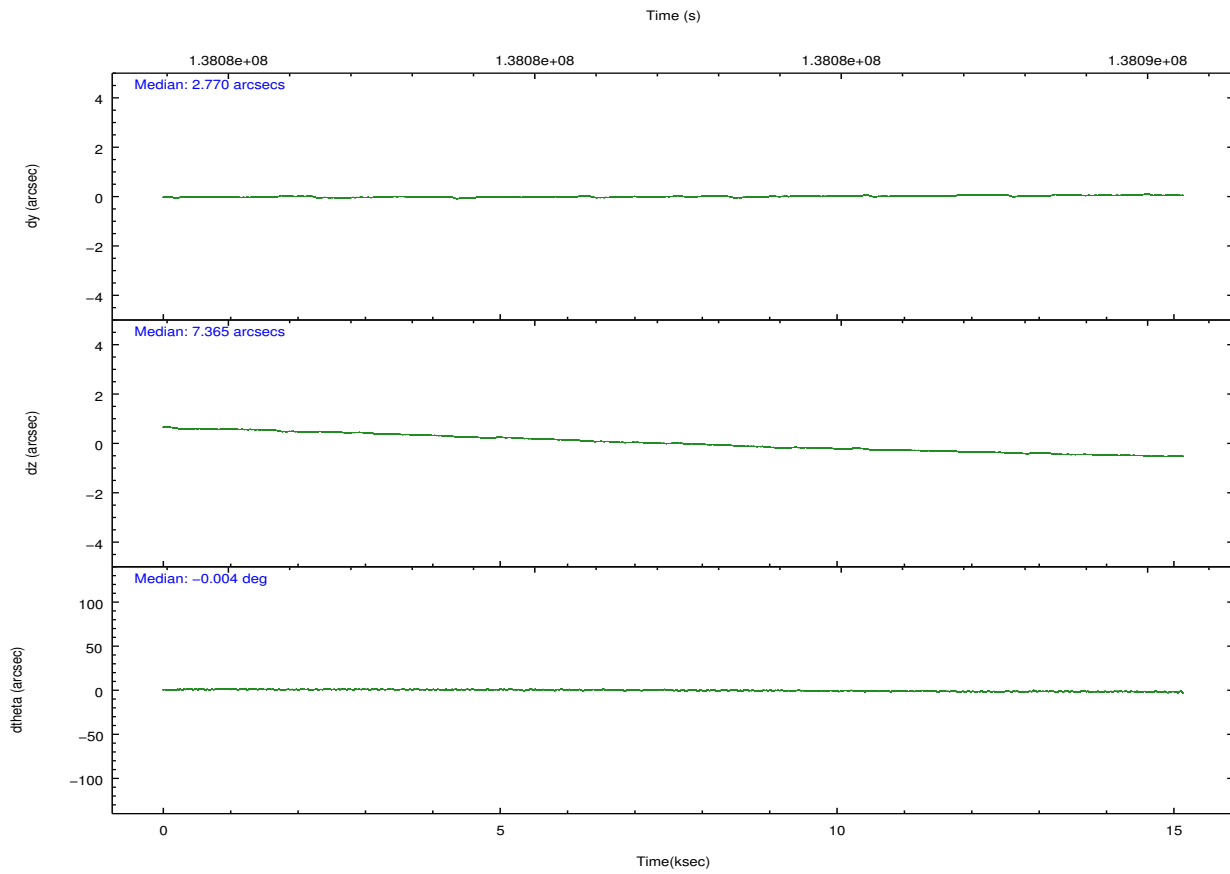
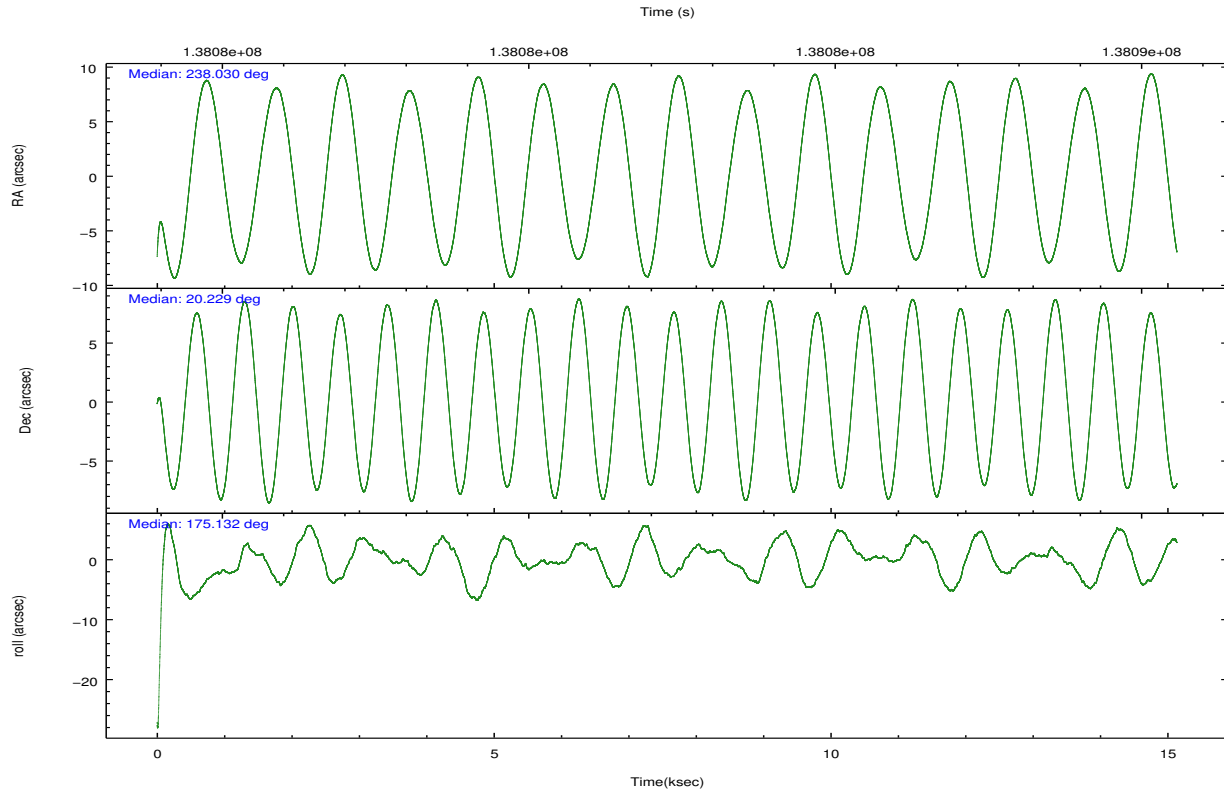
	ccd 3	ccd 5	ccd 6	ccd 7	ccd 8
grade 0 events	3131	10290	3663	5689	10838
	3%	8%	4%	5%	9%
grade 1 events	29	216	56	144	104
	0%	0%	0%	0%	0%
grade 2 events	1625	15976	1802	9865	5452
	1%	13%	2%	10%	4%
grade 3 events	874	2912	996	4649	4238
	1%	2%	1%	4%	3%
grade 4 events	890	2777	993	4516	3869
	1%	2%	1%	4%	3%
grade 5 events	2961	9109	3167	9886	4429
	3%	7%	3%	10%	3%
grade 6 events	1569	27566	1809	22467	6381
	1%	23%	2%	23%	5%
grade 7 events	73547	46356	73543	39338	79547
	86%	40%	85%	40%	69%

2.2 Compared Parameters

Parameter	Planned	Actual	Parameter	Planned	Actual
Instrument	ACIS	ACIS	Obspar format version number	7	7
Detector	ACIS-35678	ACIS-35678	Obspar file type	PREDICTED	ACTUAL
Grating	NONE	NONE	Obspar update status	NONE	UPDATED
Data mode	VFAINT	VFAINT	Number of optional ACIS chips dropped	0	0
Observation mode	POINTING	POINTING	On-chip summing requested	N	N
[deg] Pointing RA	238.056383	238.0302308698948	Subarray requested	NONE	NONE
[deg] Pointing Dec	20.240932	20.22902043996513	Alternating exposures requested	N	N
[deg] Pointing Roll	174.966128	175.1317720802927	[s] Primary exposure time	0.000000	3.1
[mm] SIM focus pos	-0.684267	-0.6828225247311905			
[mm] SIM defocus	0	0.001444936568705701			
[mm] SIM translation stage pos	-190.132523	-190.1400660498719			
[mm] SIM translation stage offset	0	0.00754346686406393			
[s] Observation start time (MET)	138074822.184000	138073667.2913			
Observation start date	2002-05-18T02:05:58	2002-05-18T01:47:47			
[s] Observation end time (MET)	138089822.184000	138090517.77949			
Observation end date	2002-05-18T06:15:58	2002-05-18T06:28:37			
Read mode	TIMED	TIMED			

2.3 Aspect



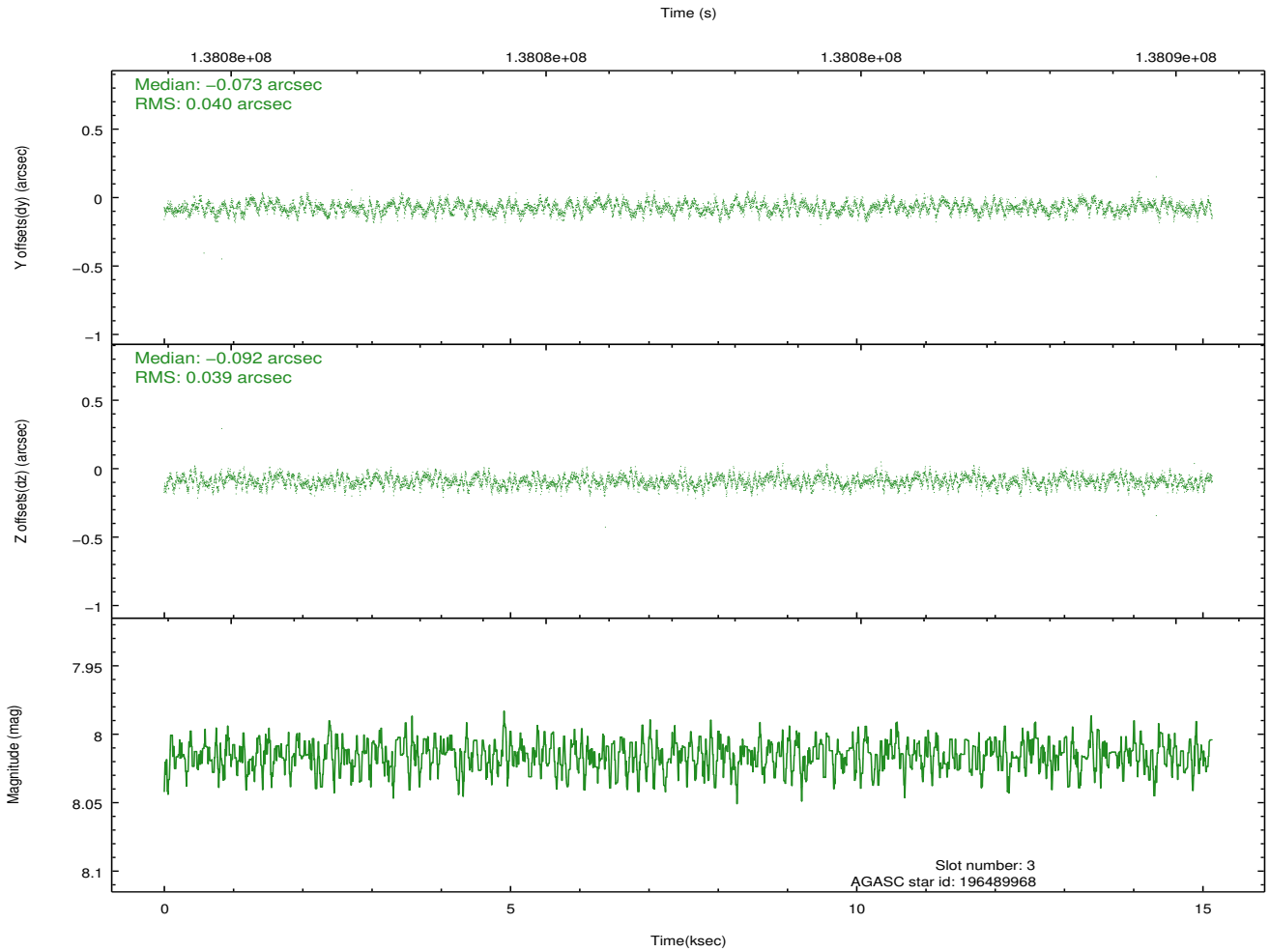
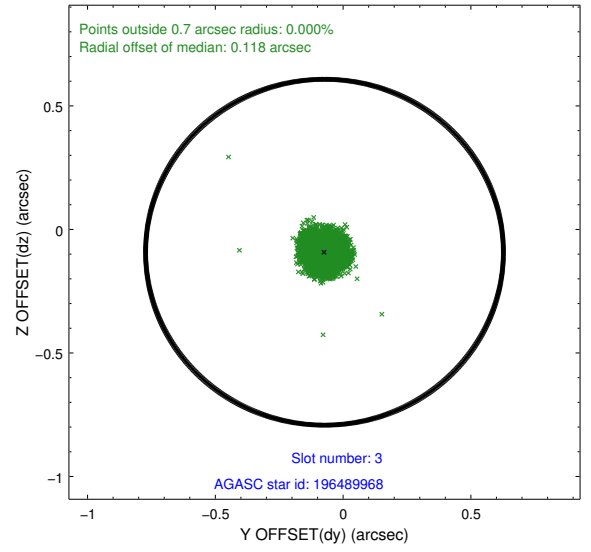
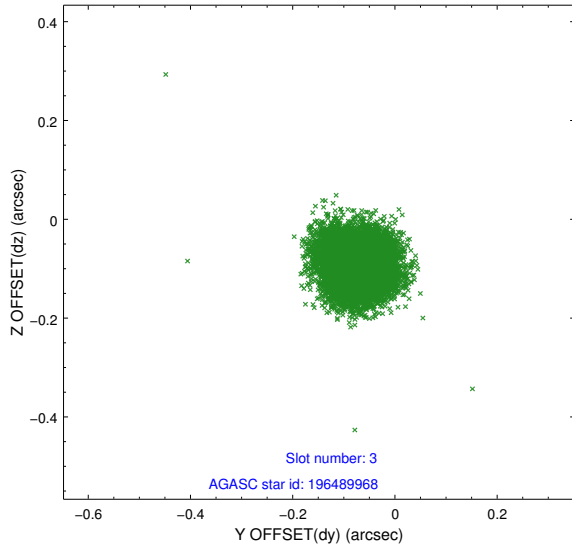


Slot Statistics

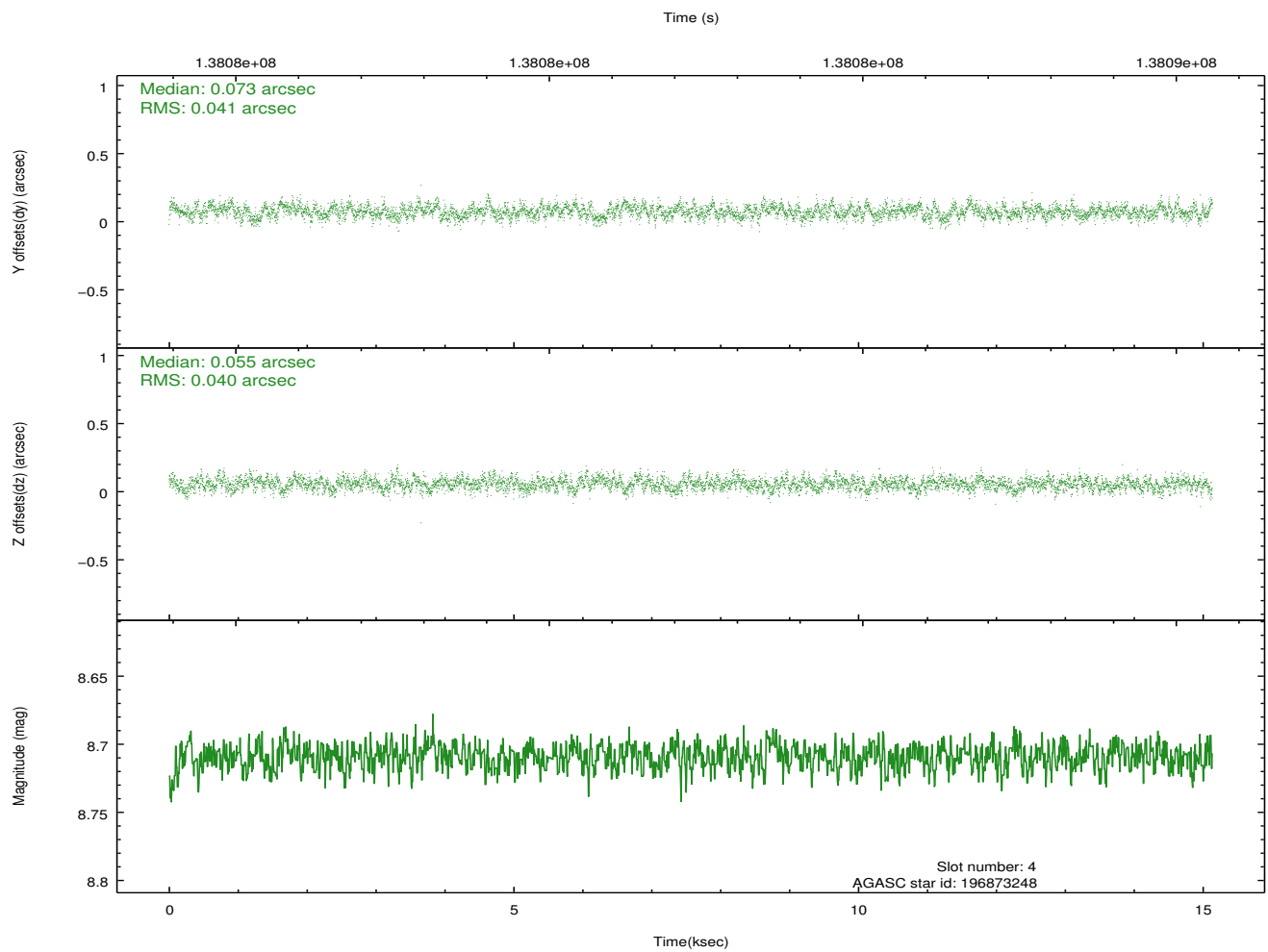
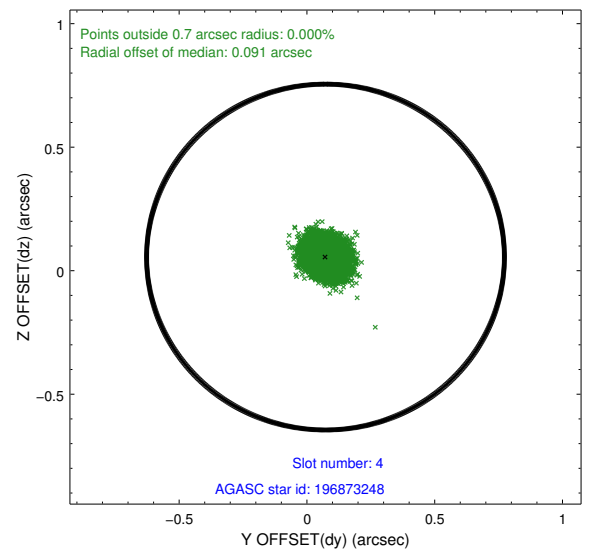
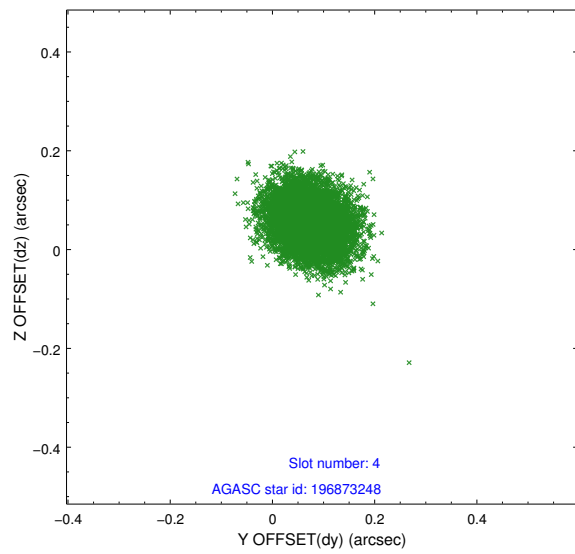
slot	status	id	mag	n_pts	med_dy	med_dz	dr1	dr2	ra	dec	mean_y	mean_z
0	FID	ACIS-S-2	7.11	3691	-0.010	0.007	0.009	0.015	0.000000	0.000000	-755.42	-1728.55
1	FID	ACIS-S-4	7.20	3692	-0.040	0.003	0.007	0.012	0.000000	0.000000	2157.69	179.61
2	FID	ACIS-S-5	7.24	3692	0.019	-0.001	0.008	0.014	0.000000	0.000000	-1807.85	173.63
3	GUIDE	196489968	8.02	7385	-0.073	-0.092	0.059	0.091	237.504150	19.692523	1690.99	2127.89
4	GUIDE	196873248	8.71	7384	0.073	0.055	0.061	0.099	238.212487	20.381335	-480.54	-549.56
5	GUIDE	196486768	9.95	7376	-0.031	-0.013	0.106	0.175	237.815681	19.909178	706.24	1260.57
6	GUIDE	196870968	9.76	7382	0.051	-0.047	0.099	0.158	238.606443	20.079805	-1903.74	411.75
7	GUIDE	196878088	9.55	7379	-0.018	0.101	0.119	0.186	238.308754	20.865304	-649.27	-2313.88

2.4 Star Slots

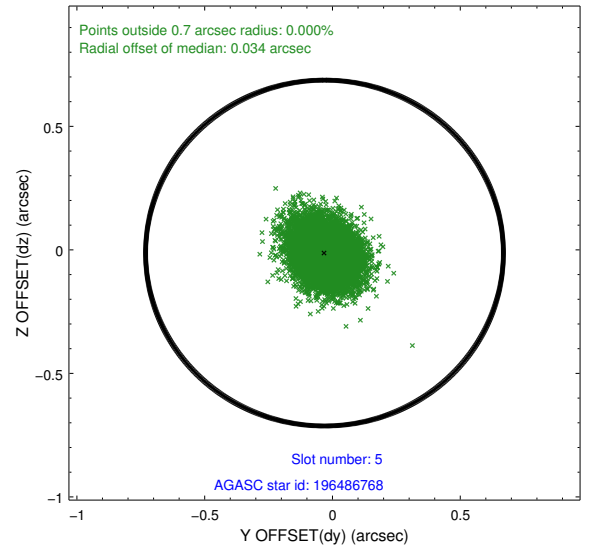
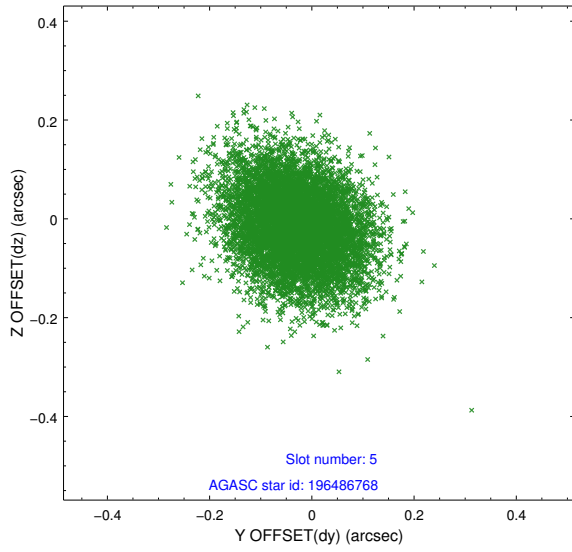
2.4.1 Slot 3



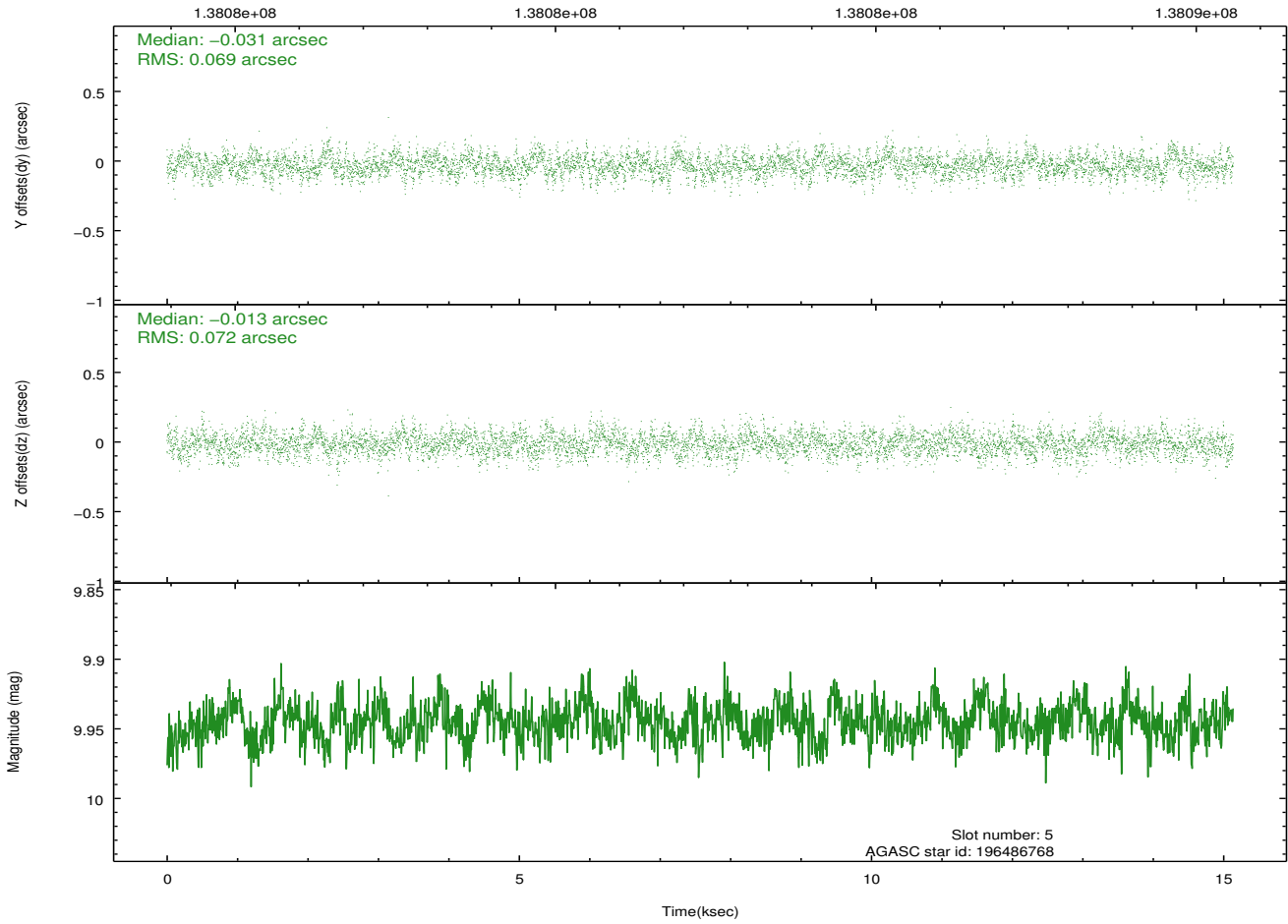
2.4.2 Slot 4



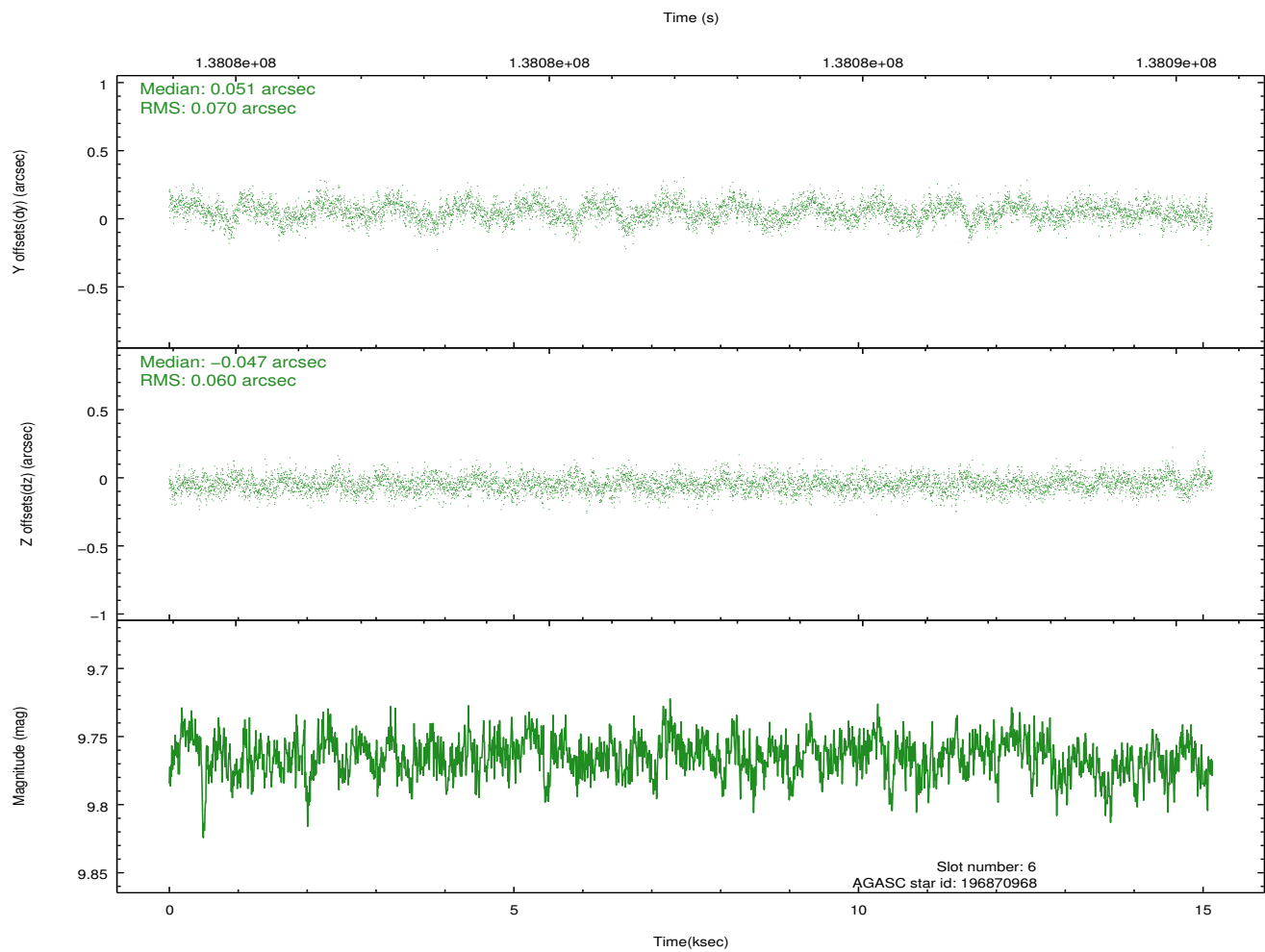
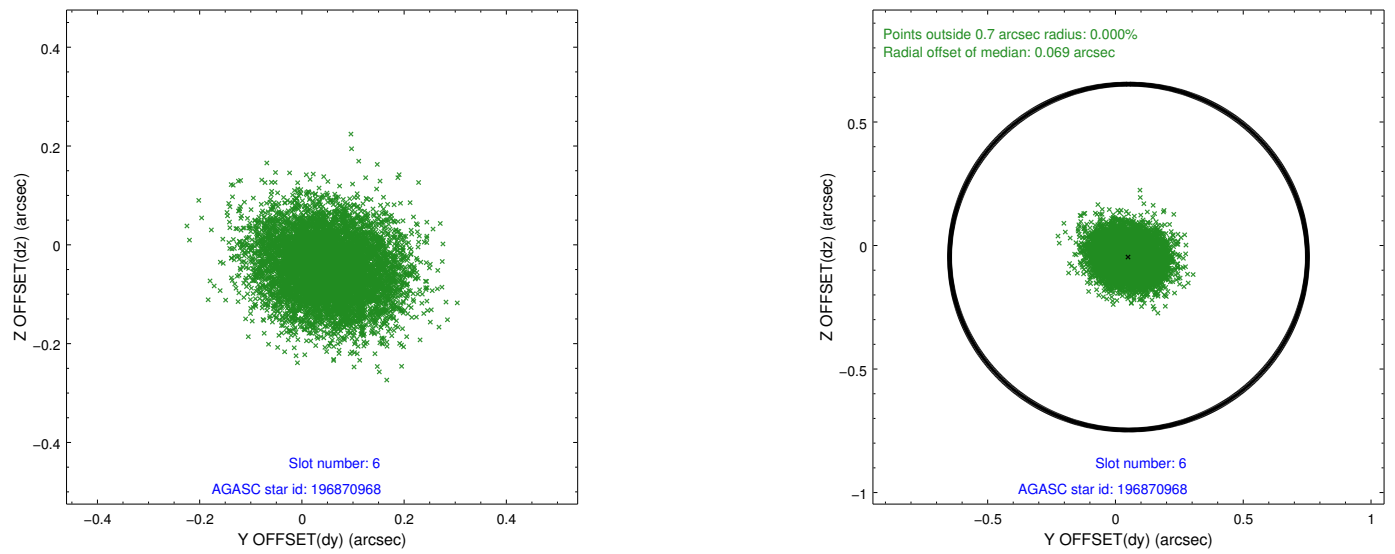
2.4.3 Slot 5



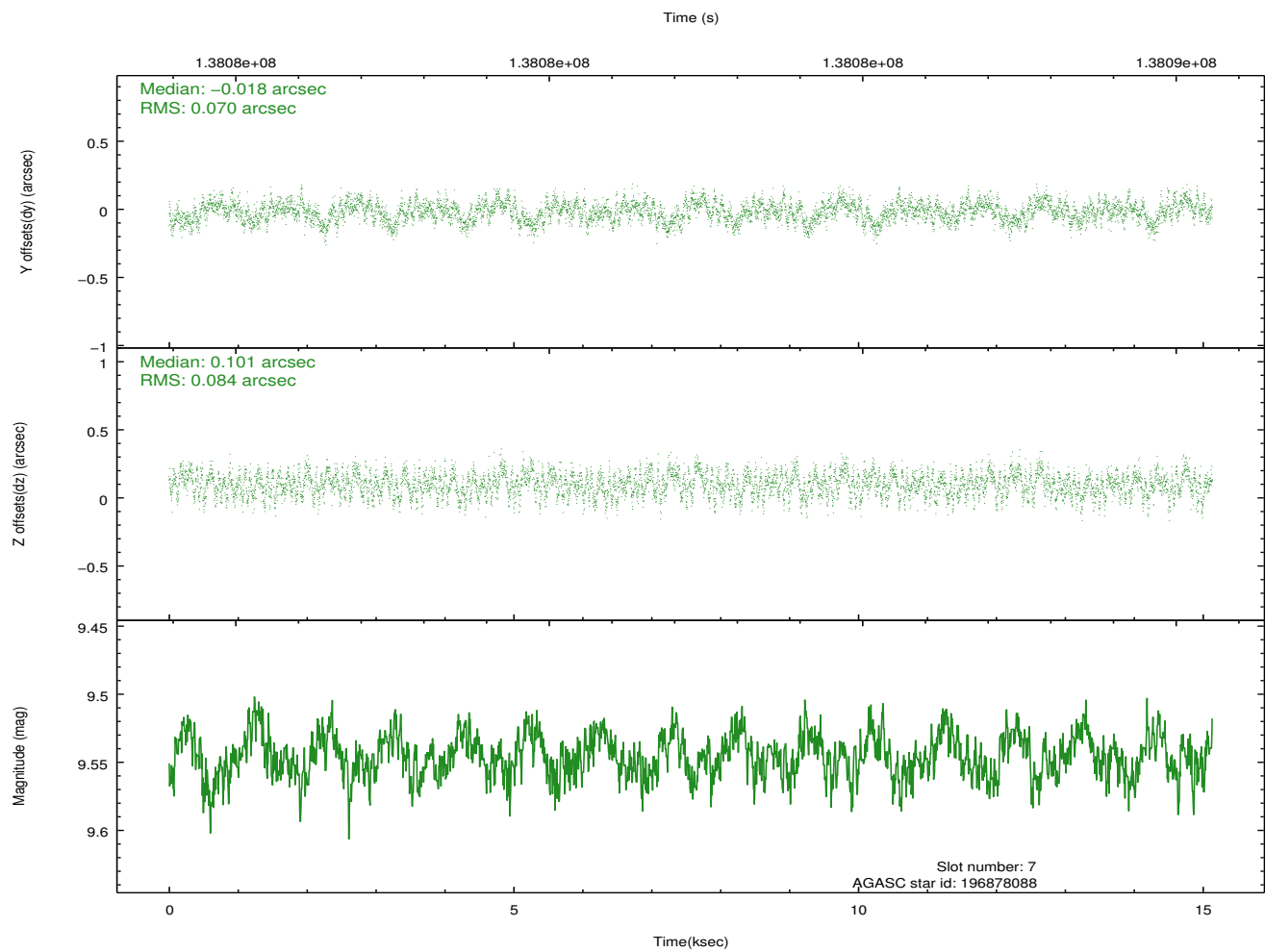
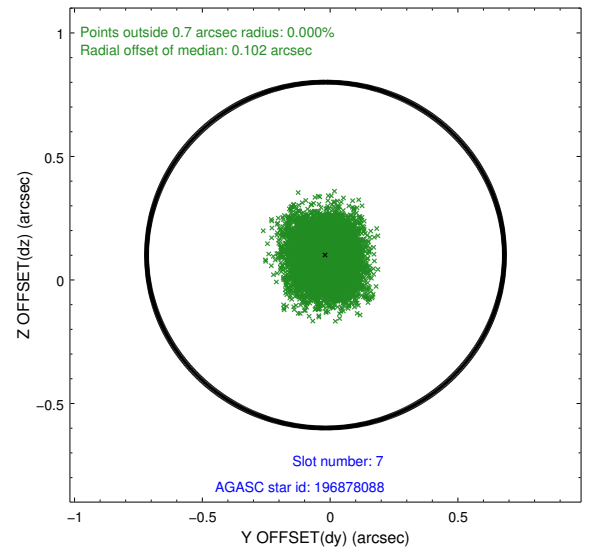
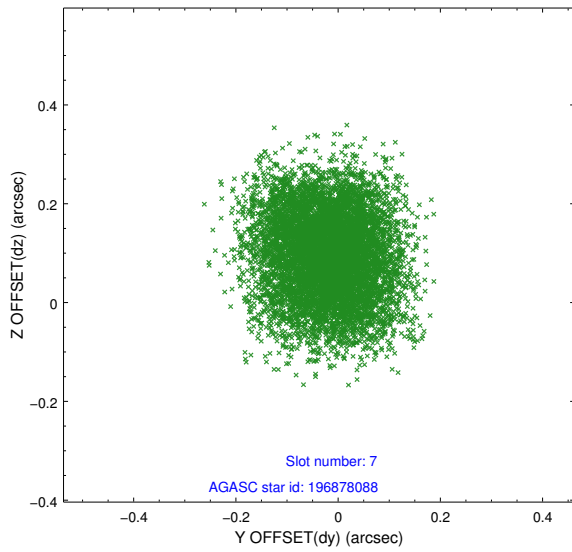
Time (s)



2.4.4 Slot 6

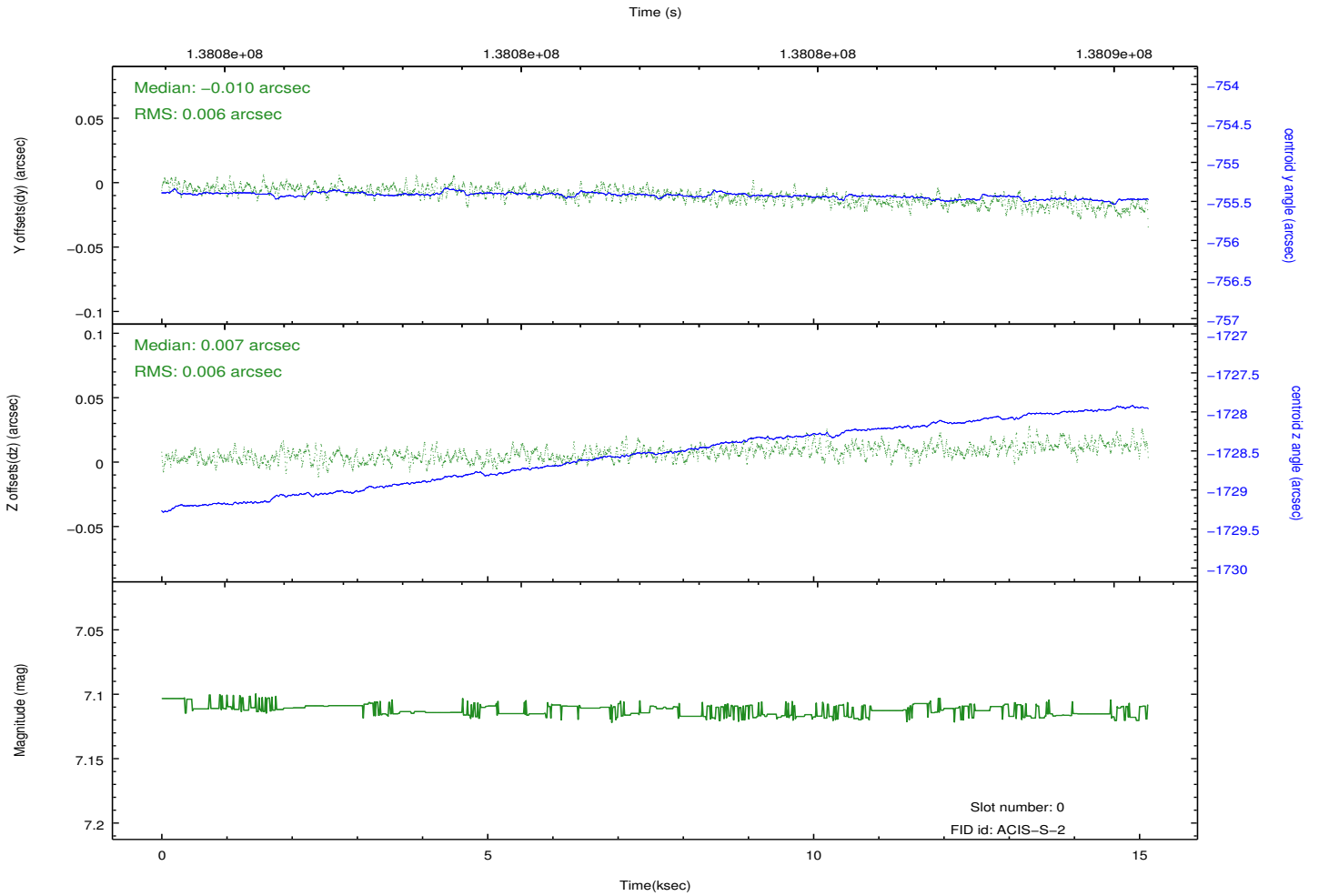
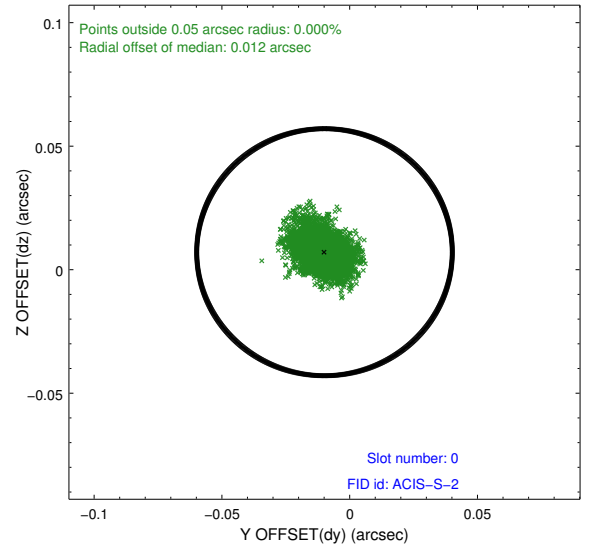
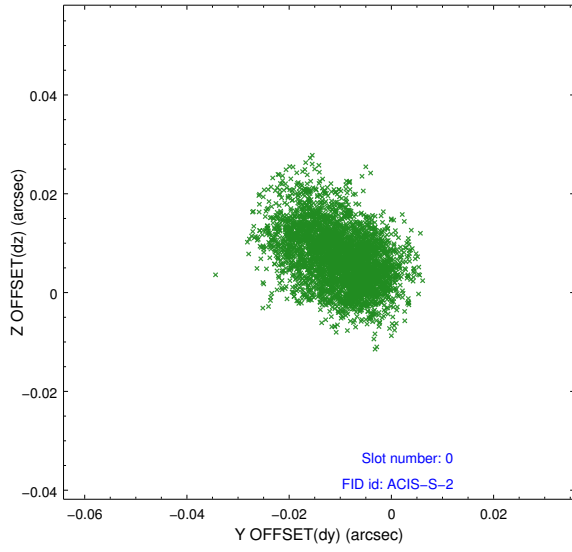


2.4.5 Slot 7

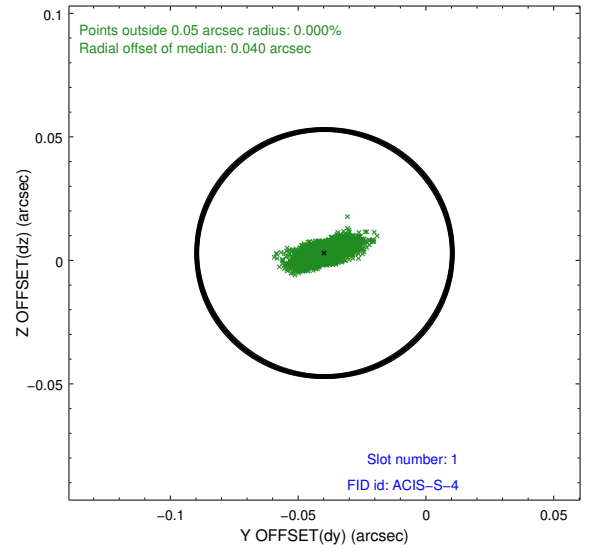
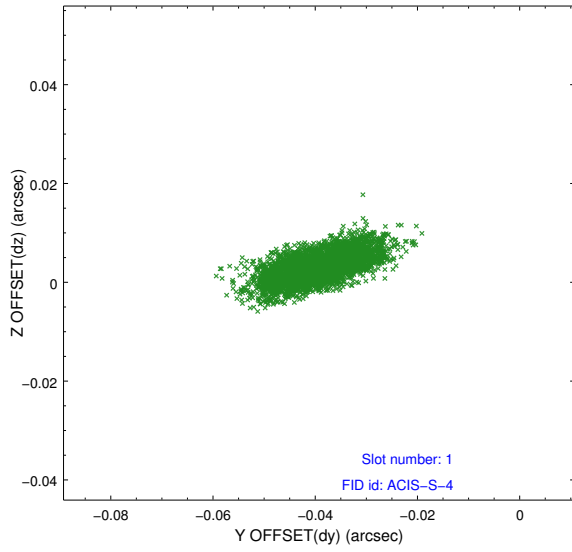


2.5 FID Slots

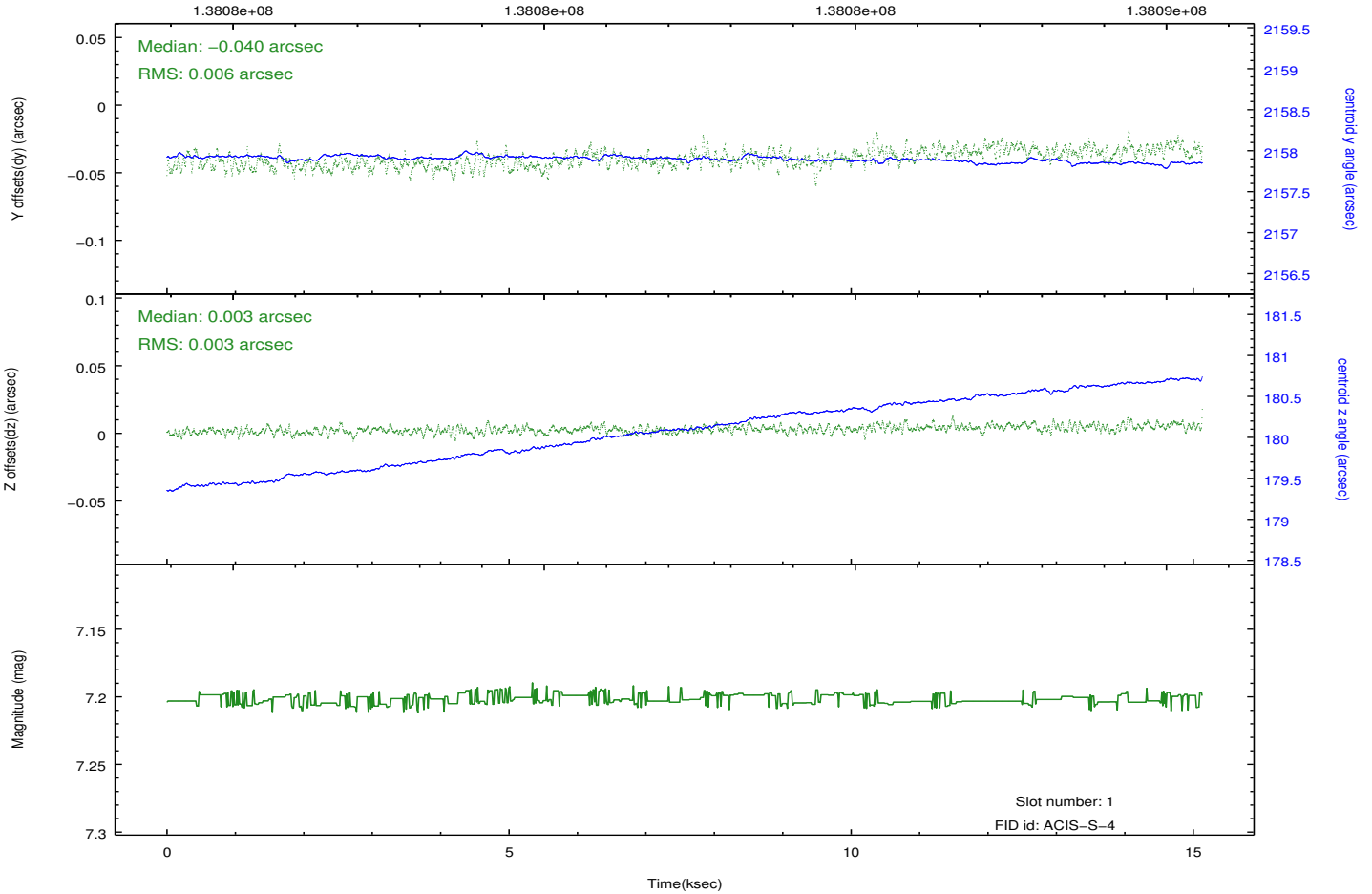
2.5.1 Slot 0



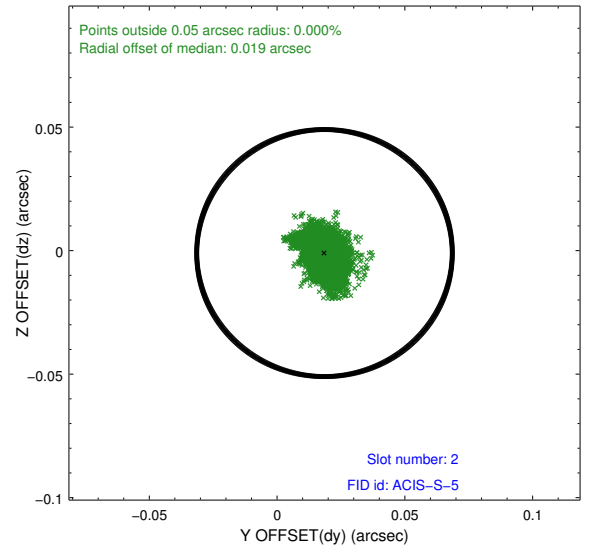
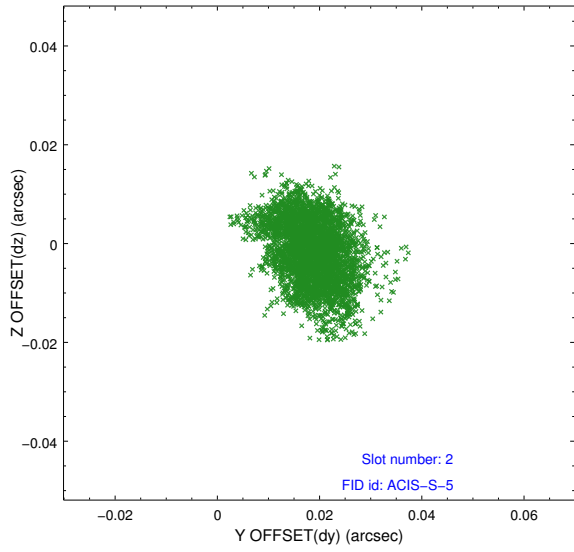
2.5.2 Slot 1



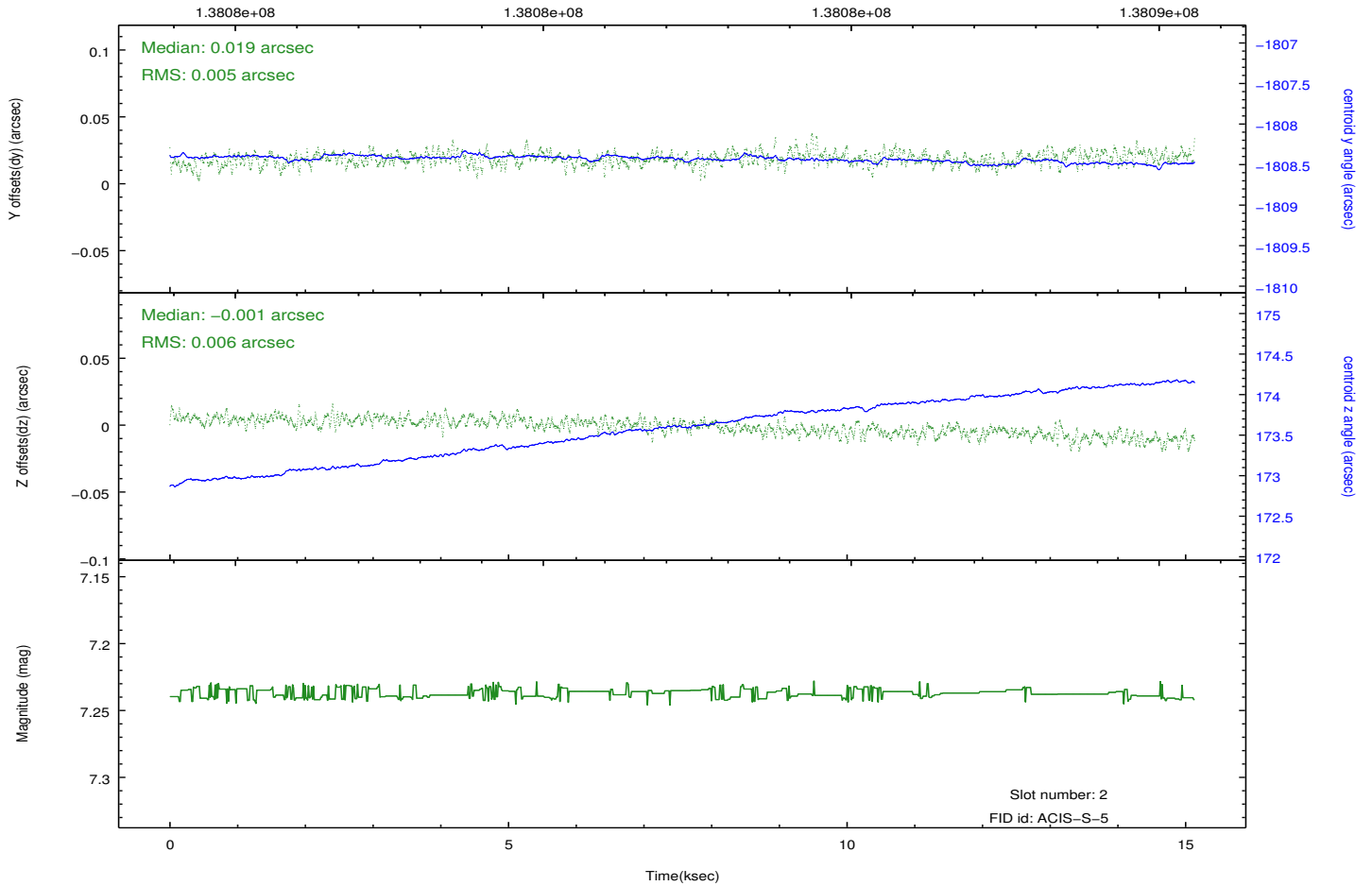
Time (s)



2.5.3 Slot 2



Time (s)



A Summary

A.1 Status

V&V Scientist	Beth Sundheim
V&V Date (YYYY-MM-DD)	2012.10.17
V&V Edition	1
V&V Disposition and Status	OK
V&V Charge Time	15.131

A.2 Comments