

V&V Reference Report

L2 ASCDS Version : 8.4.5

Observation 3234 - L2 Version 4
Chandra X-Ray Center

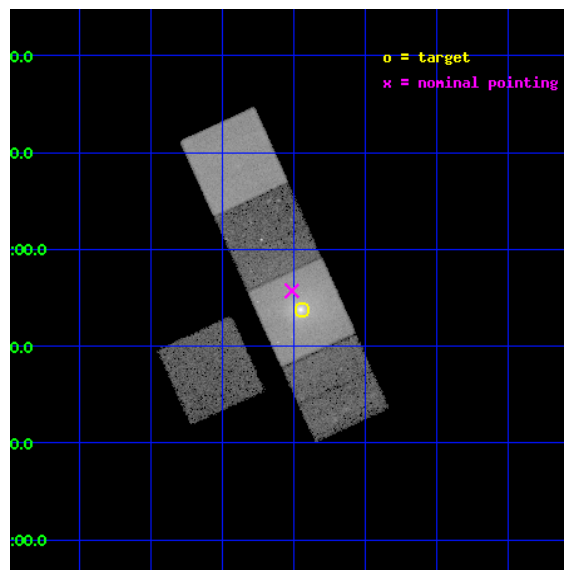
L2 Processing Date : Oct 18 2012

Contents

1	Front	2
2	OBI	3
2.1	OBI	3
2.1.1	Images	3
2.1.2	Bias	3
2.1.3	Parameters	4
2.1.4	Events	4
2.2	Compared Parameters	5
2.3	Aspect	6
2.4	Star Slots	9
2.4.1	Slot 3	9
2.4.2	Slot 4	10
2.4.3	Slot 5	11
2.4.4	Slot 6	12
2.4.5	Slot 7	13
2.5	FID Slots	14
2.5.1	Slot 0	14
2.5.2	Slot 1	15
2.5.3	Slot 2	16
A	Summary	17
A.1	Status	17
A.2	Comments	17

1 Front

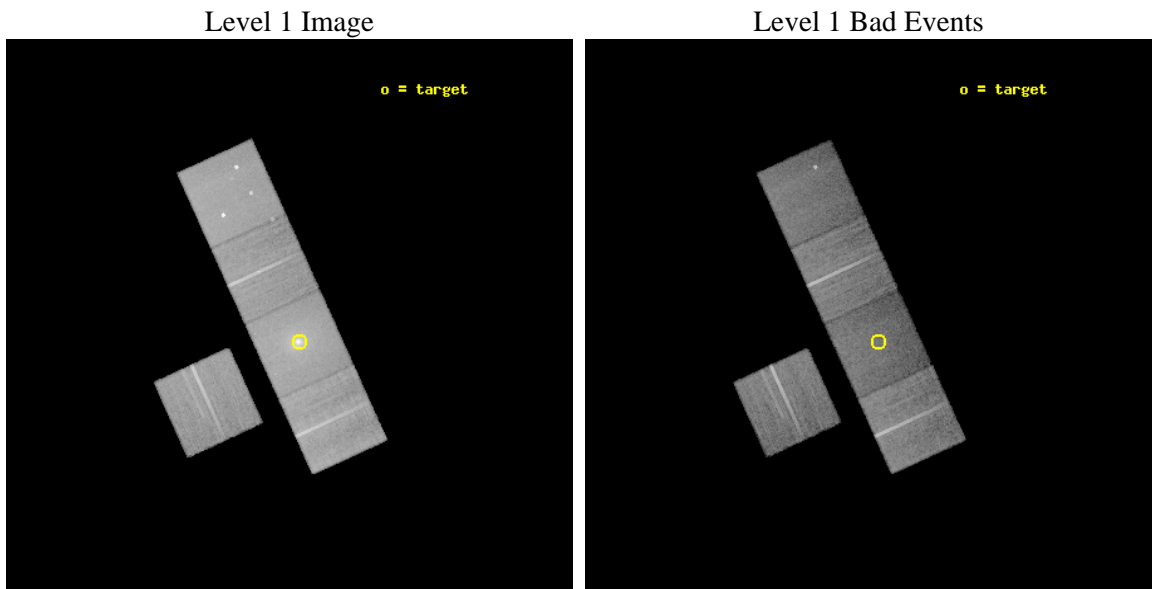
seq_num	800234	Sequence number
obs_id	3234	Observation id
title	STUDY OF METAL ENRICHMENT PROCESSES AROUND THE CENTRAL GALAXY IN THE MKW4 CLUSTER	Proposal title
observer	DR YASUSHI FUKAZAWA	Principal investigator
object	MKW4	Source name
dtcycle	0	
cycle	P	events from which exps? Prim/Second/Both
ra_targ	181.11125	Observer's specified target RA [deg]
dec_targ	1.895361	Observer's specified target Dec [deg]
ra_nom	181.1283819746	Nominal RA [deg]
dec_nom	1.9286353521051	Nominal Dec [deg]
roll_nom	65.498053200407	Nominal Roll [deg]
revision	4	Processing version of data
ontime	30358.299941599	Sum of GTIs [s]
livetime	29961.646403407	Livetime [s]
ontime3	30358.299941599	Sum of GTIs [s]
ontime5	30358.299941599	Sum of GTIs [s]
ontime6	30358.299941599	Sum of GTIs [s]
ontime7	30358.299941599	Sum of GTIs [s]
ontime8	30358.299941599	Sum of GTIs [s]
l2events	290881	Number of level 2 events



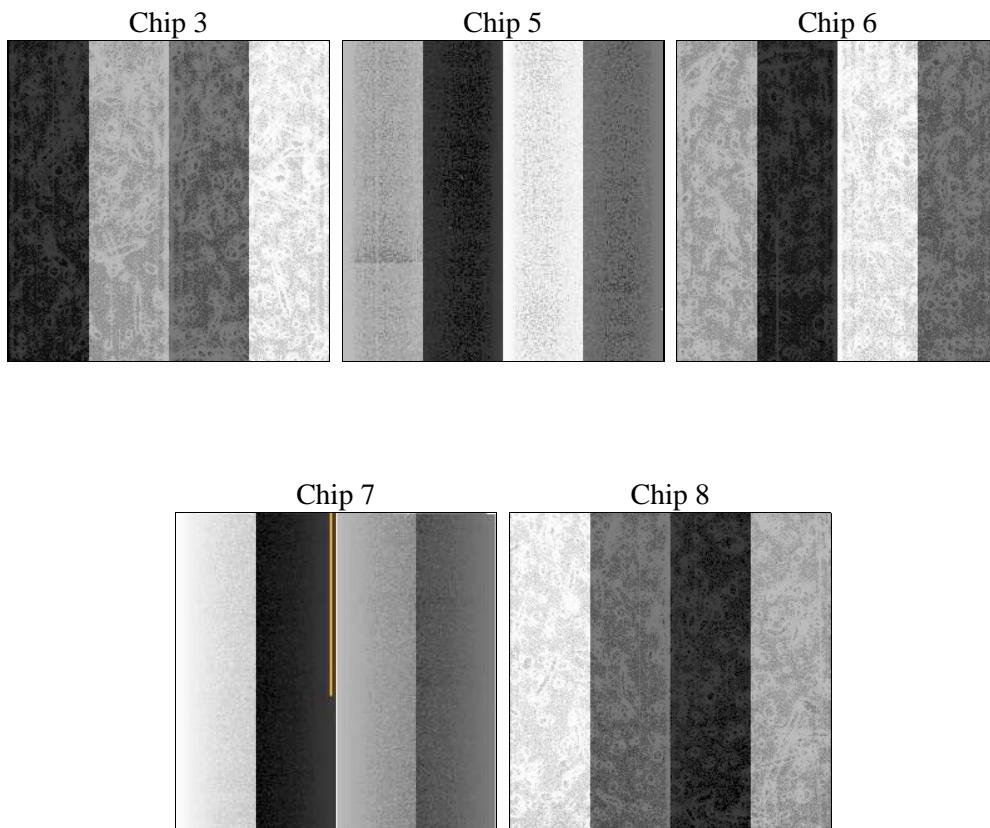
2 OBI

2.1 OBI

2.1.1 Images



2.1.2 Bias



2.1.3 Parameters

obi_num	0	Obi number	sched_exp_time	30200.000000	[s] Scheduled observation exposure time
ascdsver	8.4.5	Processing system revision	ontime	30358.299941599	Sum of GTIs [s]
caldbver	4.5.2	 	ontime3	30358.299941599	Sum of GTIs [s]
date	2012-10-18T05:05:45	Date and time of file creation	ontime5	30358.299941599	Sum of GTIs [s]
revision	4	Processing version of data	ontime6	30358.299941599	Sum of GTIs [s]
			ontime7	30358.299941599	Sum of GTIs [s]
			ontime8	30358.299941599	Sum of GTIs [s]
			l1events	988202	Number of level 1 events

2.1.4 Events

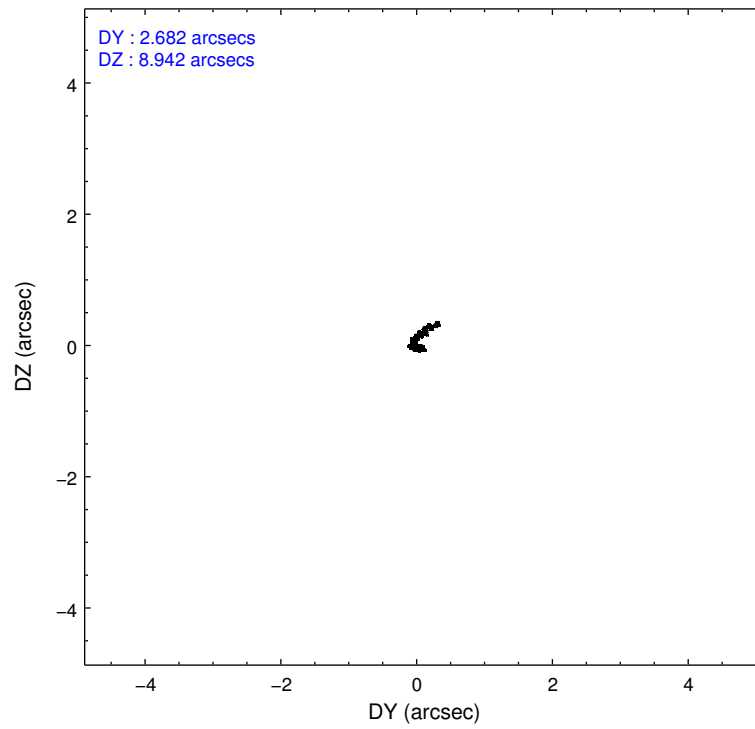
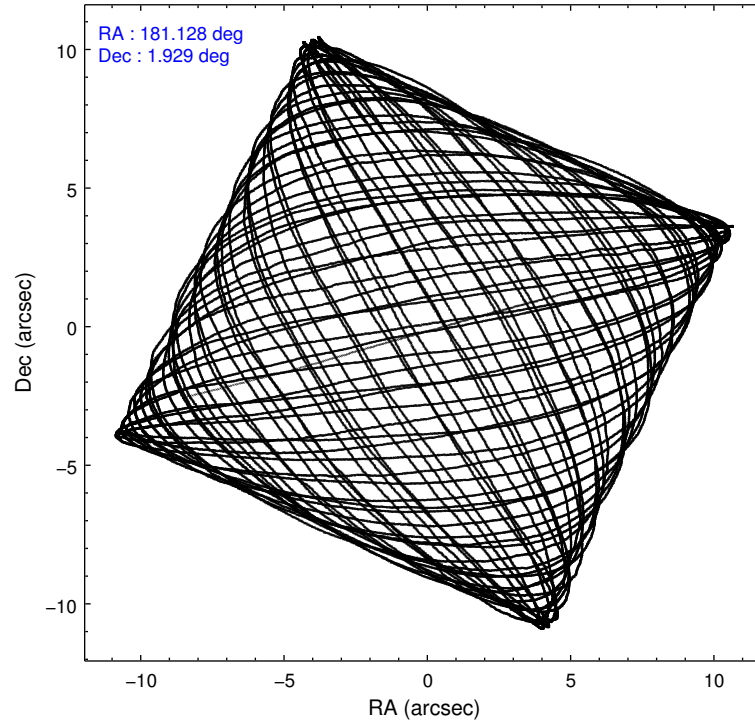
	ccd 3	ccd 5	ccd 6	ccd 7	ccd 8
level 1 events	160963	216401	168038	238873	203927
rejected events	144493	106675	145673	95036	155972
rejected %	89%	49%	86%	39%	76%

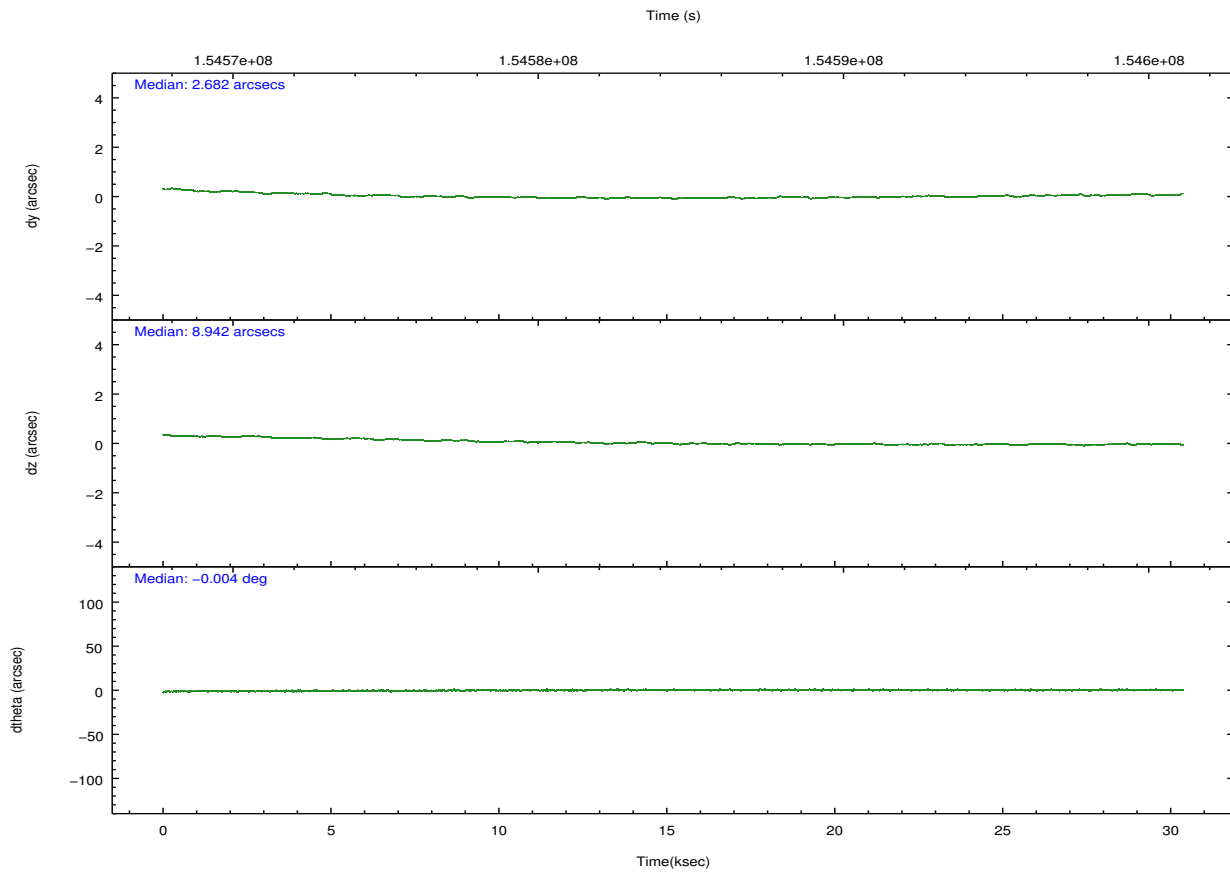
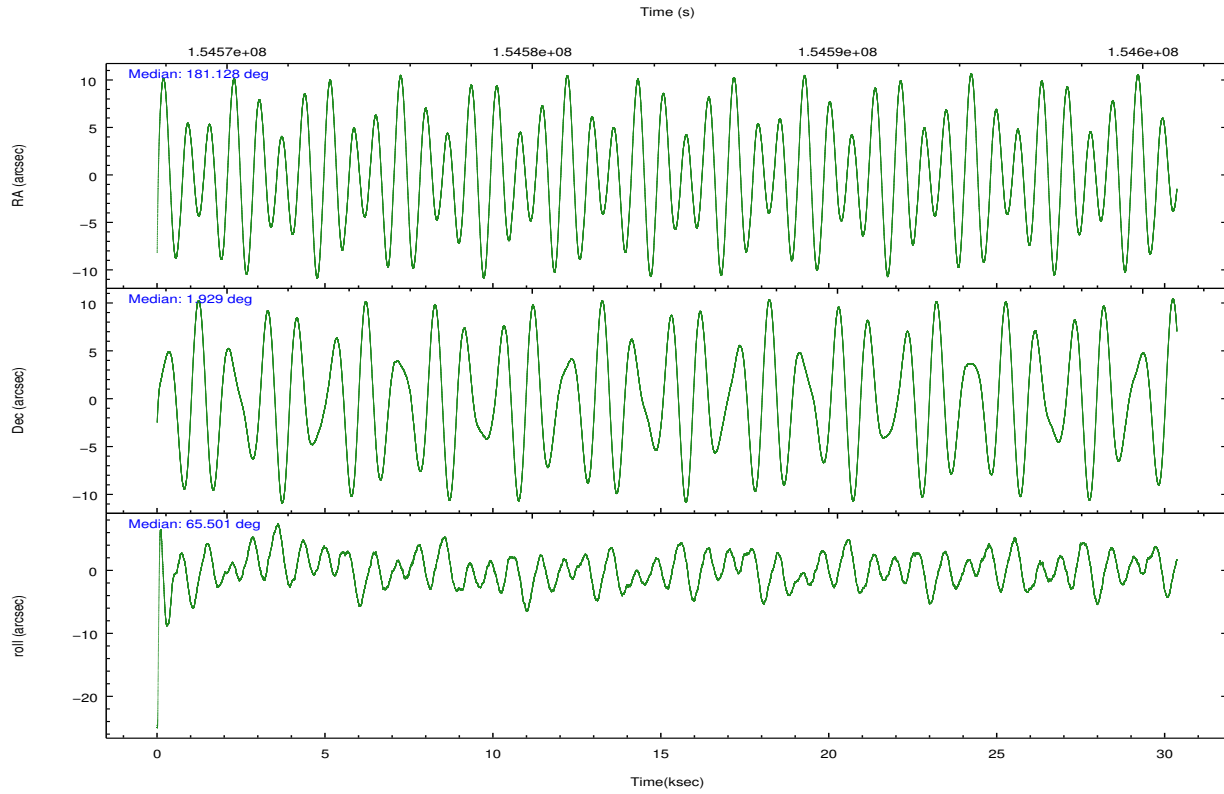
	ccd 3	ccd 5	ccd 6	ccd 7	ccd 8
grade 0 events	6856	15800	10974	29192	16917
	4%	7%	6%	12%	8%
grade 1 events	70	184	78	158	145
	0%	0%	0%	0%	0%
grade 2 events	3207	31514	4106	33148	9803
	1%	14%	2%	13%	4%
grade 3 events	1790	4871	1953	15072	5073
	1%	2%	1%	6%	2%
grade 4 events	1779	4684	1942	15150	4630
	1%	2%	1%	6%	2%
grade 5 events	5959	17492	6113	18609	8648
	3%	8%	3%	7%	4%
grade 6 events	2882	53196	3448	51668	11627
	1%	24%	2%	21%	5%
grade 7 events	138420	88660	139424	75876	147084
	85%	40%	82%	31%	72%

2.2 Compared Parameters

Parameter	Planned	Actual	Parameter	Planned	Actual
Instrument	ACIS	ACIS	Obspar format version number	7	7
Detector	ACIS-35678	ACIS-35678	Obspar file type	PREDICTED	ACTUAL
Grating	NONE	NONE	Obspar update status	NONE	UPDATED
Data mode	VFAINT	VFAINT	Number of optional ACIS chips dropped	0	0
Observation mode	POINTING	POINTING	On-chip summing requested	N	N
[deg] Pointing RA	181.131335	181.1283819746004	Subarray requested	NONE	NONE
[deg] Pointing Dec	1.901546	1.928635352105078	Alternating exposures requested	N	N
[deg] Pointing Roll	65.341343	65.49805320040738	[s] Primary exposure time	0.000000	3.1
[mm] SIM focus pos	-0.684267	-0.6828225247311905			
[mm] SIM defocus	0	0.001444936568705701			
[mm] SIM translation stage pos	-190.132523	-190.1425803651734			
[mm] SIM translation stage offset	0	0.01005778216563158			
[s] Observation start time (MET)	154569398.184000	154568371.82134			
Observation start date	2002-11-24T23:55:34	2002-11-24T23:39:31			
[s] Observation end time (MET)	154599598.184000	154600662.91018			
Observation end date	2002-11-25T08:18:54	2002-11-25T08:37:42			
Read mode	TIMED	TIMED			

2.3 Aspect



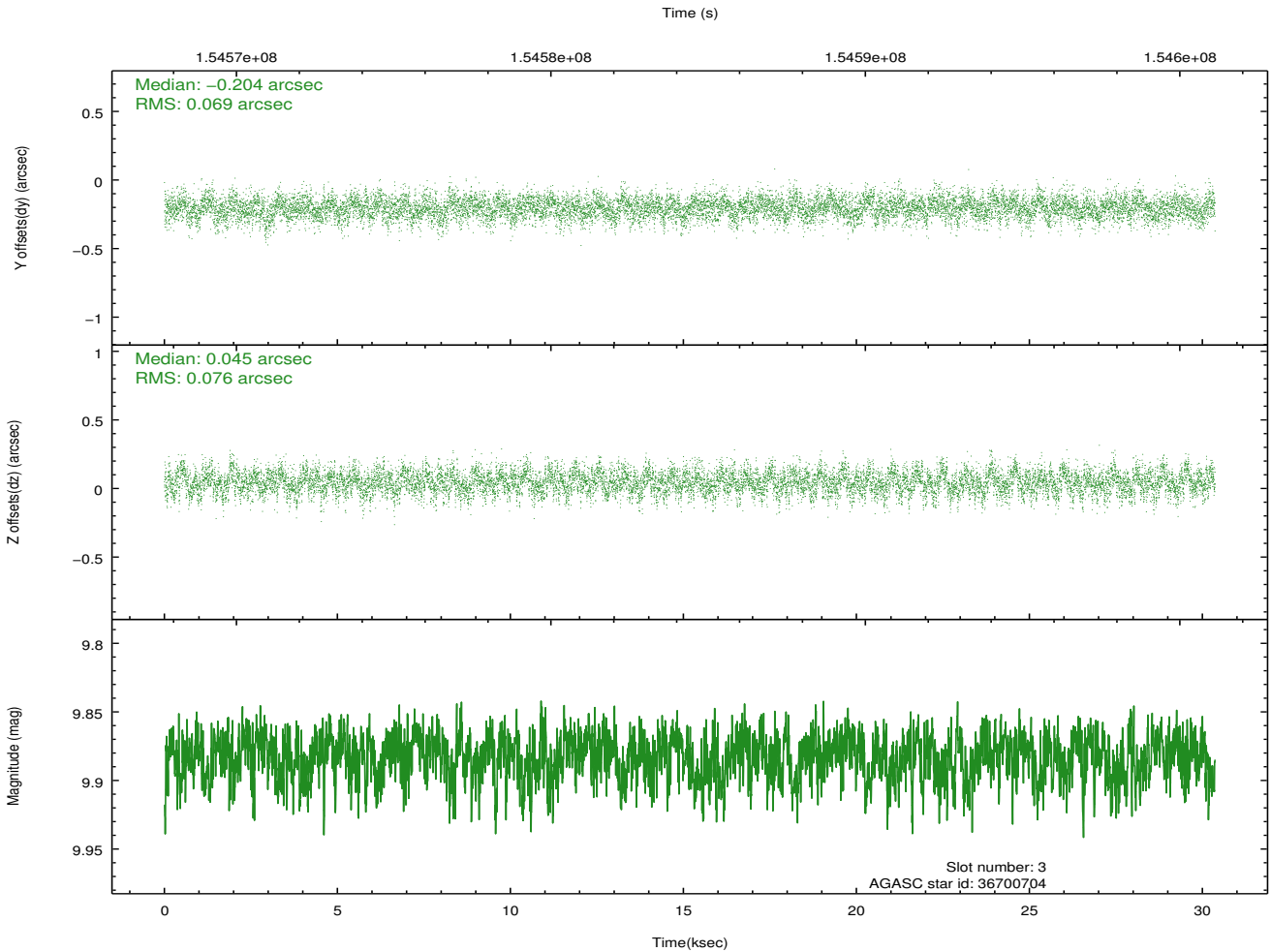
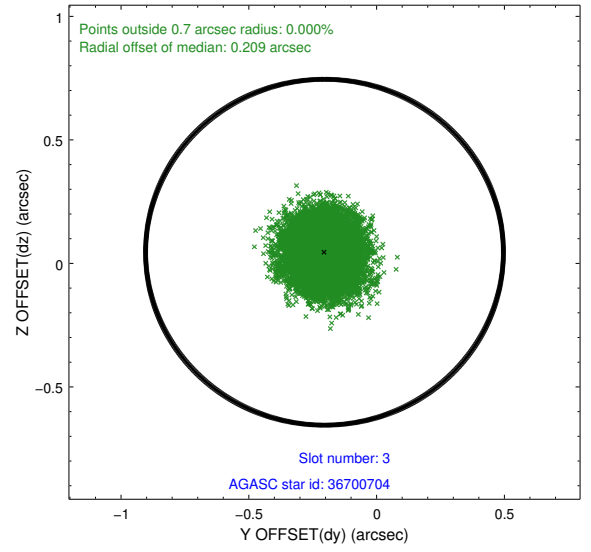
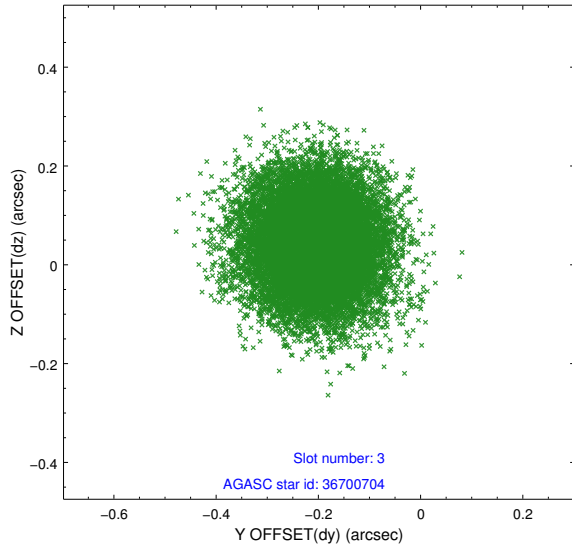


Slot Statistics

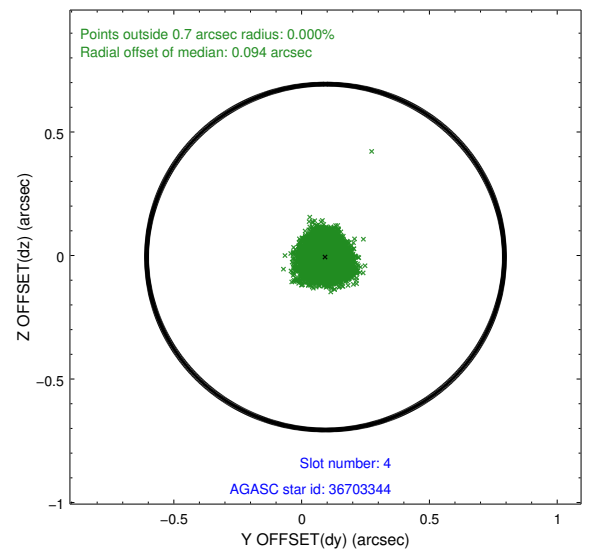
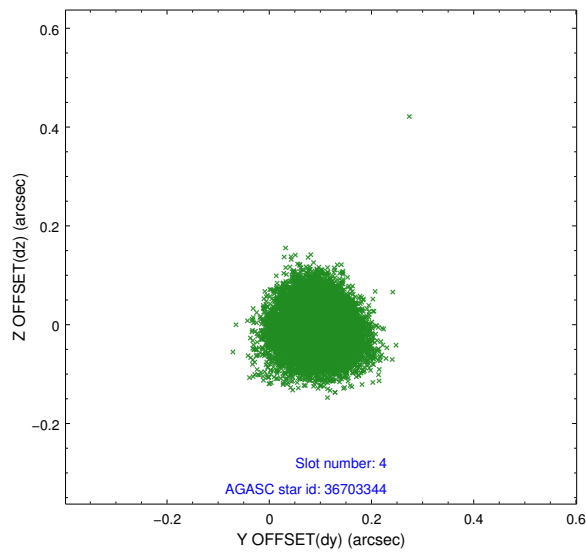
slot	status	id	mag	n_pts	med_dy	med_dz	dr1	dr2	ra	dec	mean_y	mean_z
0	FID	ACIS-S-2	7.11	7406	-0.025	-0.005	0.007	0.012	0.000000	0.000000	-755.36	-1730.17
1	FID	ACIS-S-4	7.20	7404	-0.008	0.013	0.007	0.014	0.000000	0.000000	2157.90	178.26
2	FID	ACIS-S-5	7.24	7404	0.001	0.000	0.007	0.012	0.000000	0.000000	-1808.09	171.99
3	GUIDE	36700704	9.88	14789	-0.204	0.045	0.109	0.177	181.490734	2.322169	1915.43	-543.32
4	GUIDE	36703344	8.02	14744	0.093	-0.006	0.061	0.099	181.053552	1.462035	-1554.70	-405.56
5	GUIDE	36704712	10.31	14621	-0.005	-0.018	0.164	0.283	181.473769	1.987329	794.60	-991.14
6	GUIDE	36705344	9.19	14805	-0.006	0.094	0.120	0.201	181.461691	1.305507	-1453.97	-1975.59
7	GUIDE	36706960	9.87	14632	0.125	-0.128	0.151	0.245	181.319374	1.706880	-354.68	-907.46

2.4 Star Slots

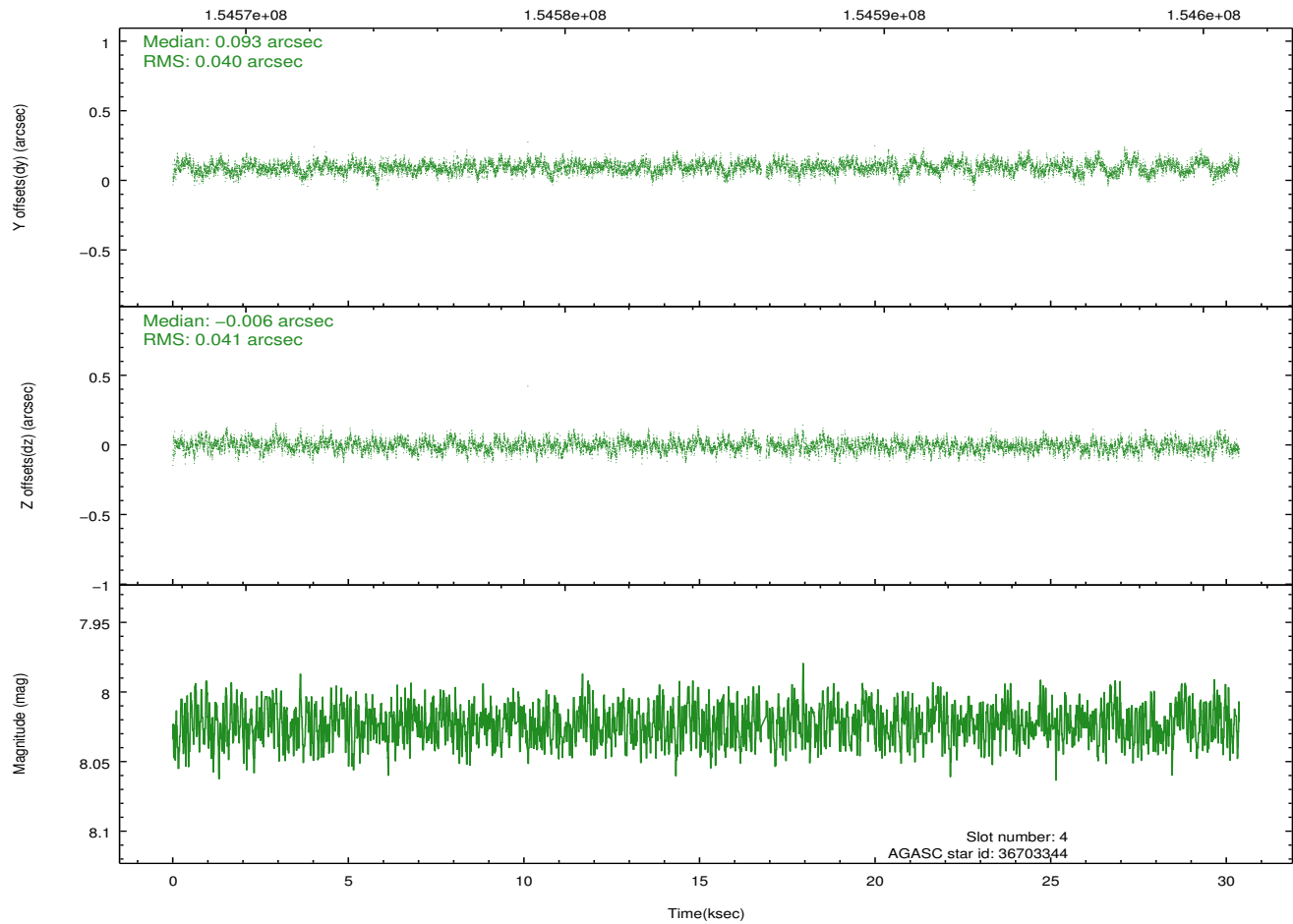
2.4.1 Slot 3



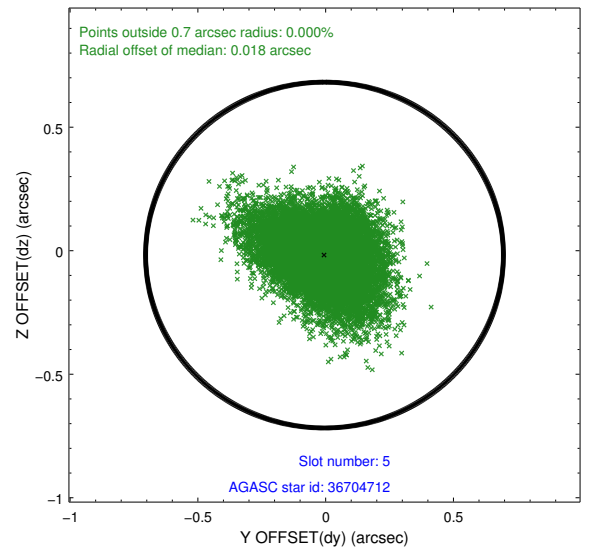
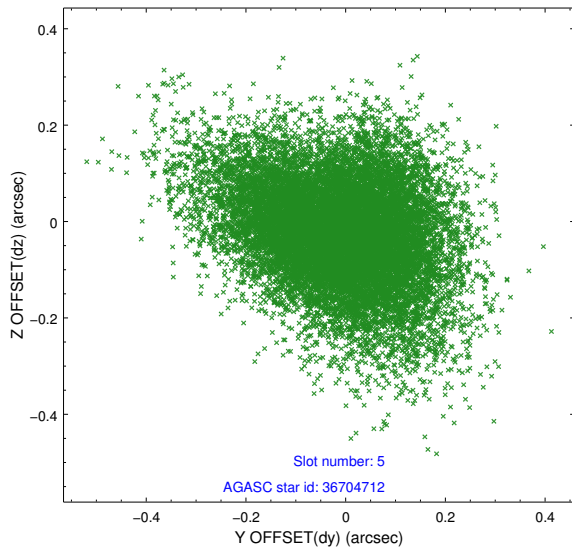
2.4.2 Slot 4



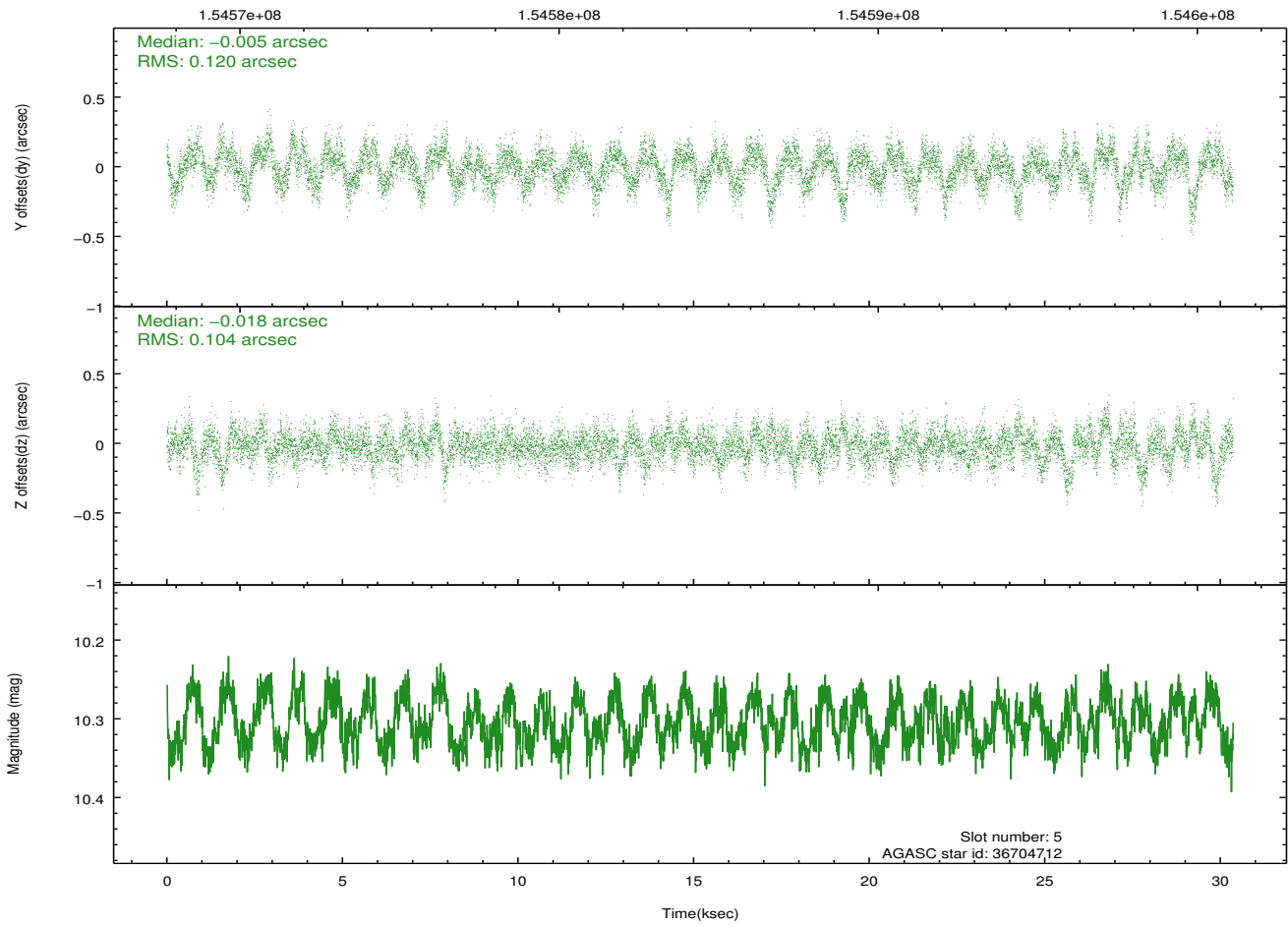
Time (s)



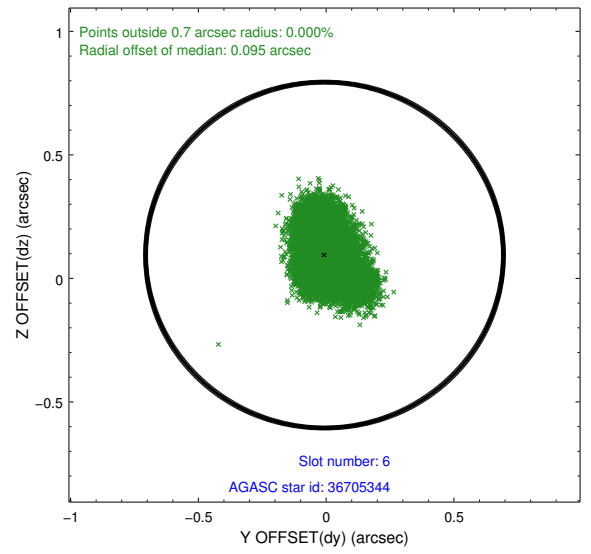
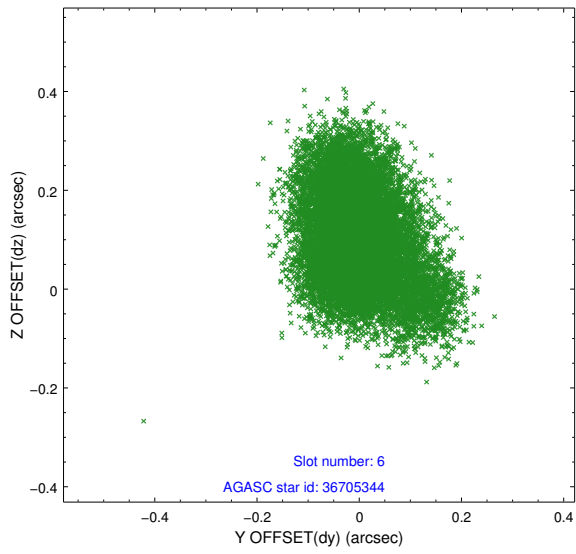
2.4.3 Slot 5



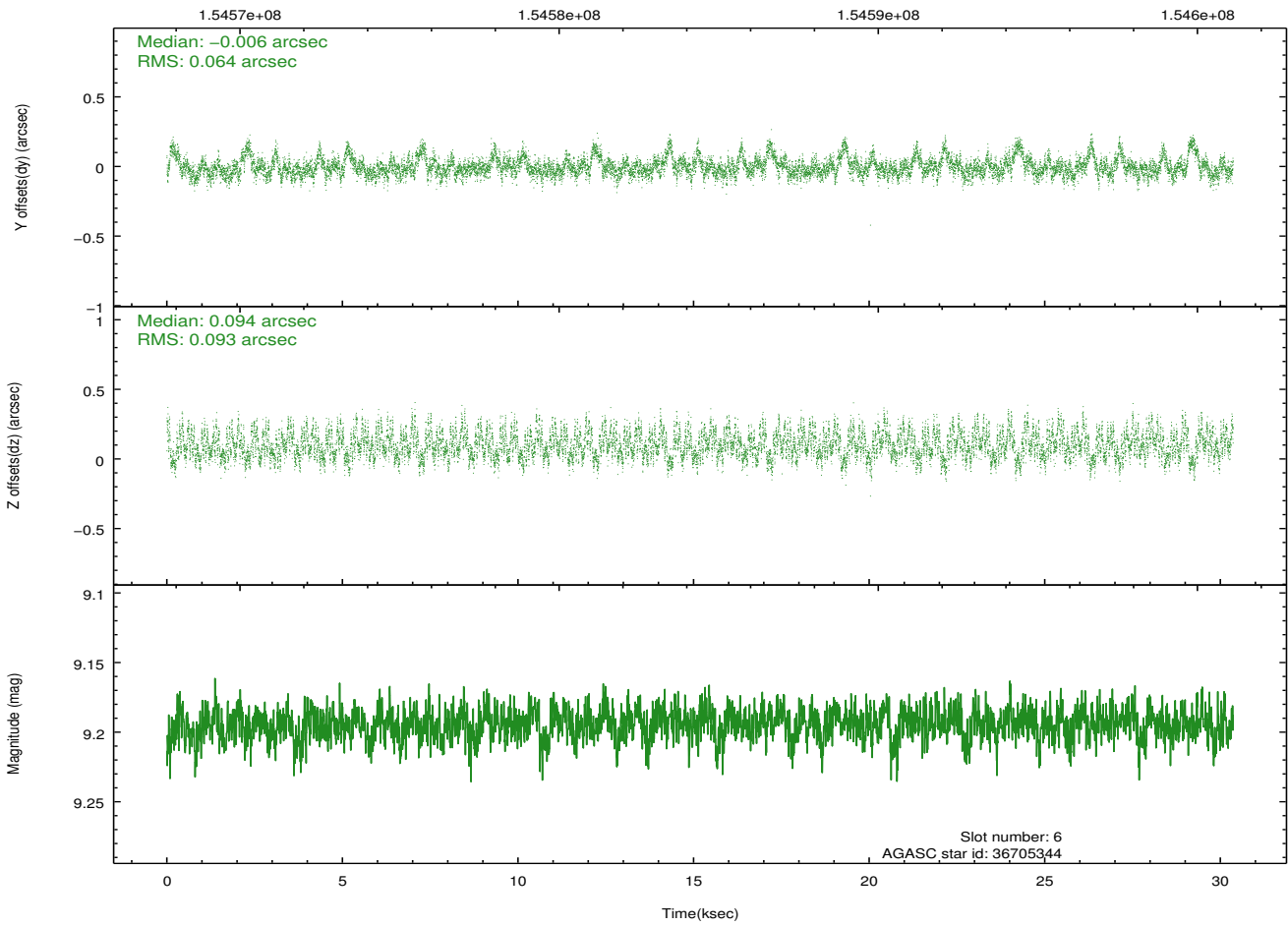
Time (s)



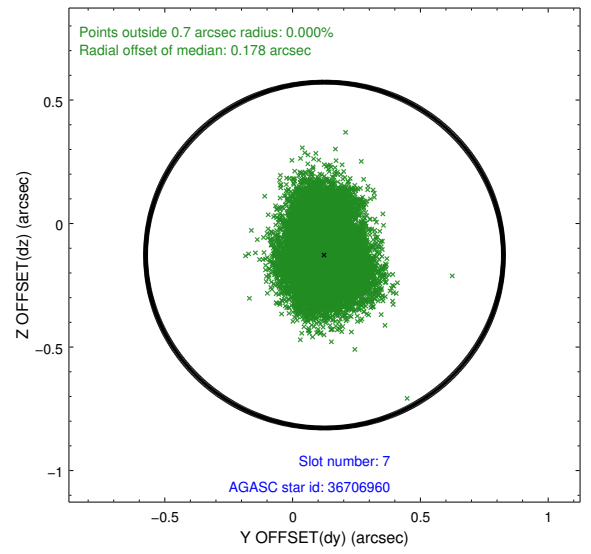
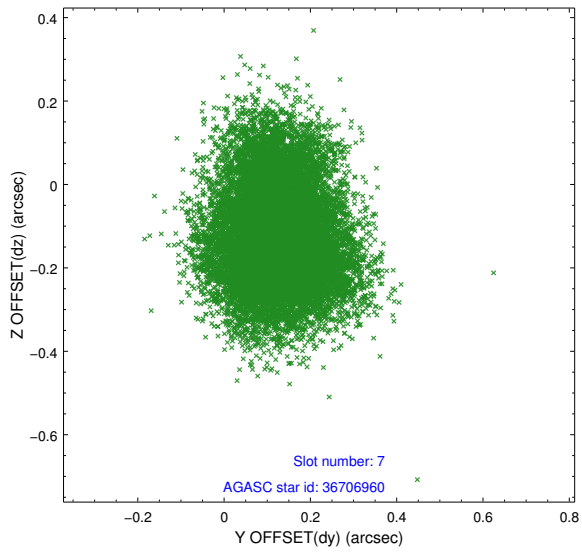
2.4.4 Slot 6



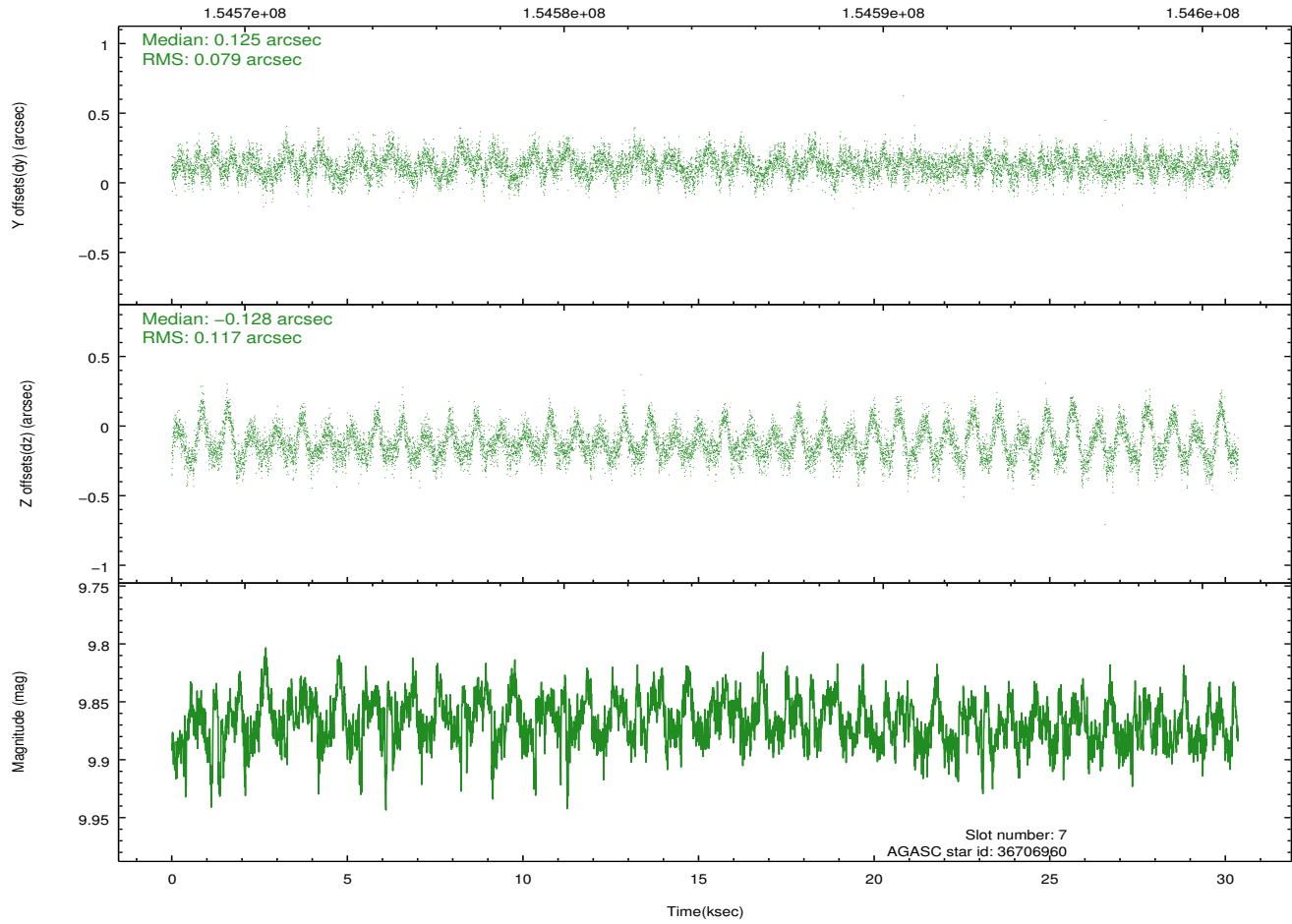
Time (s)



2.4.5 Slot 7

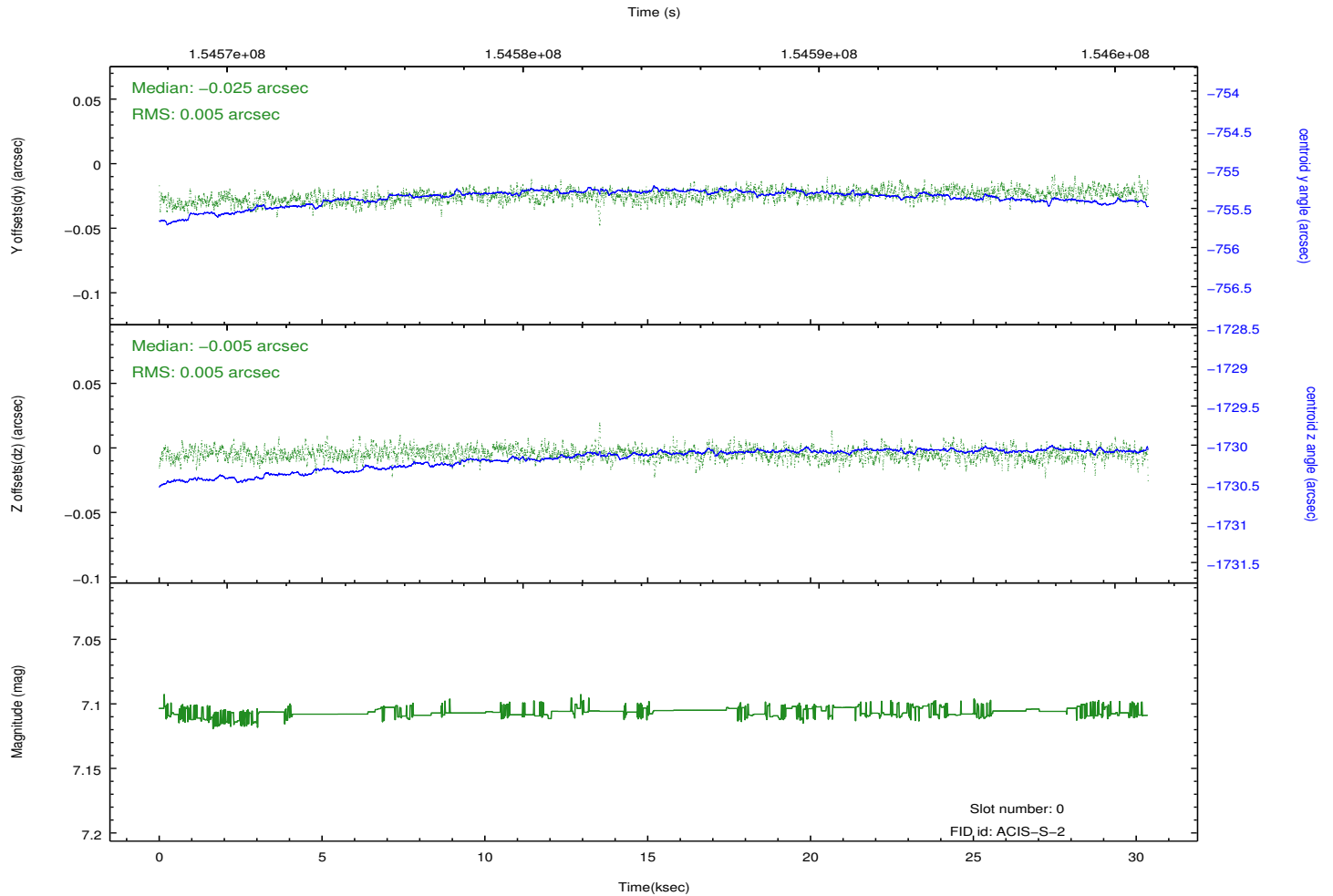
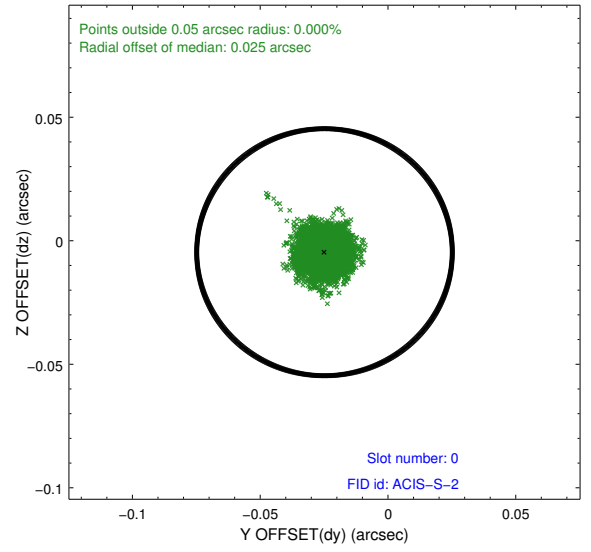
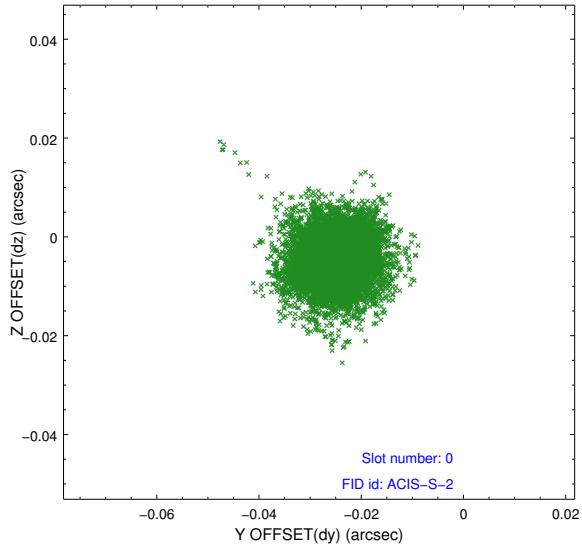


Time (s)

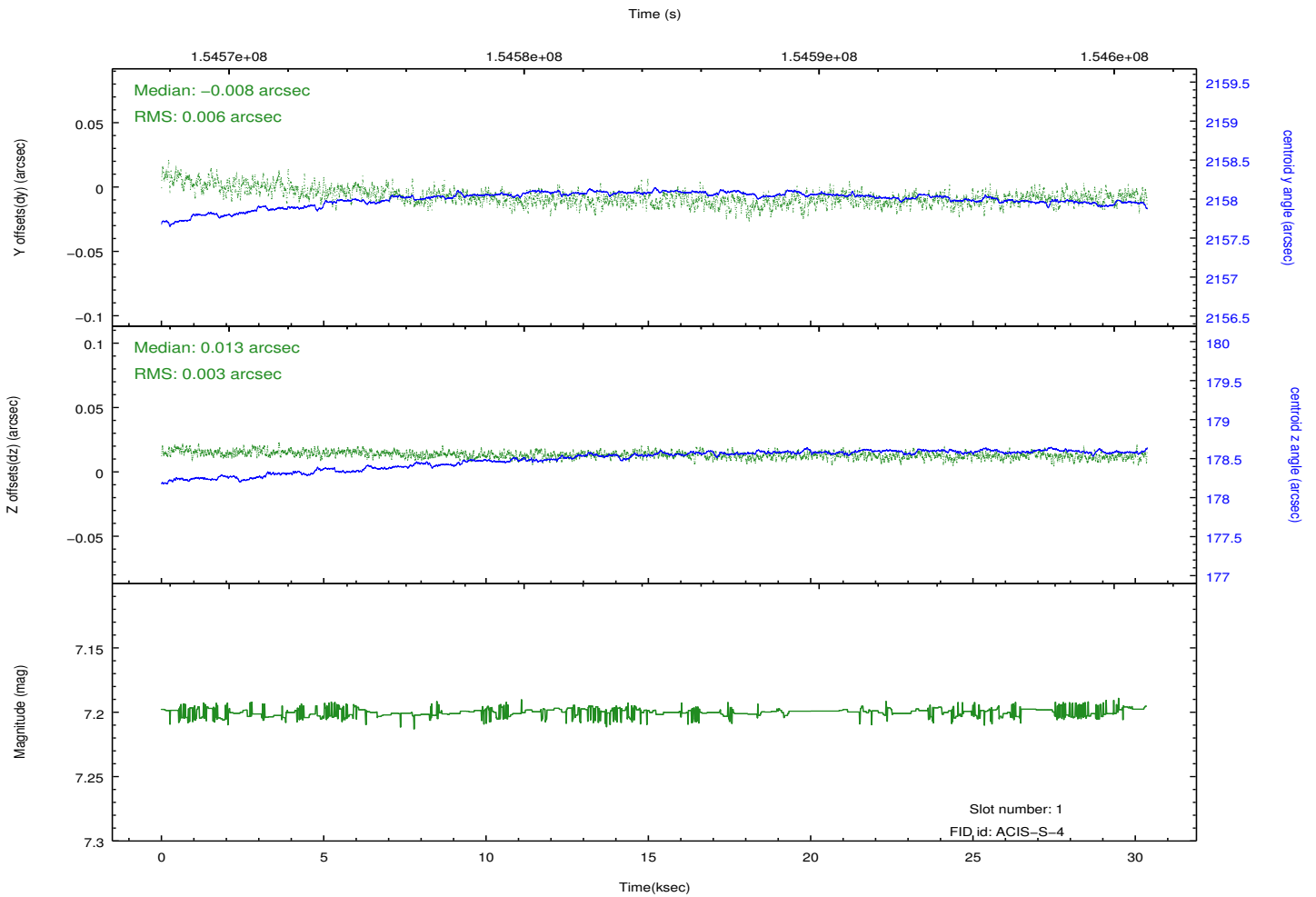
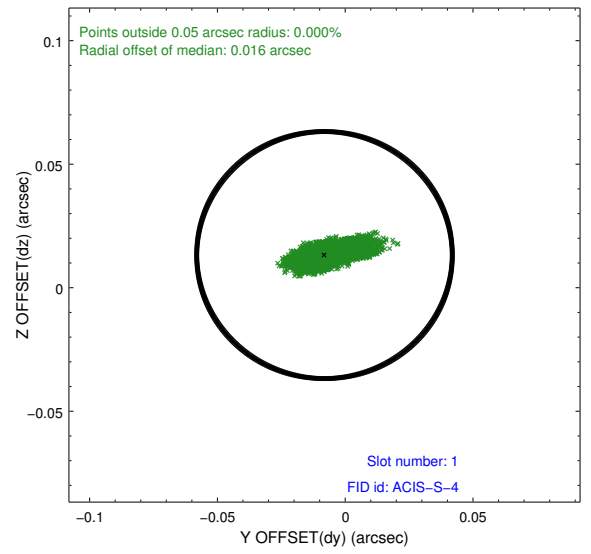
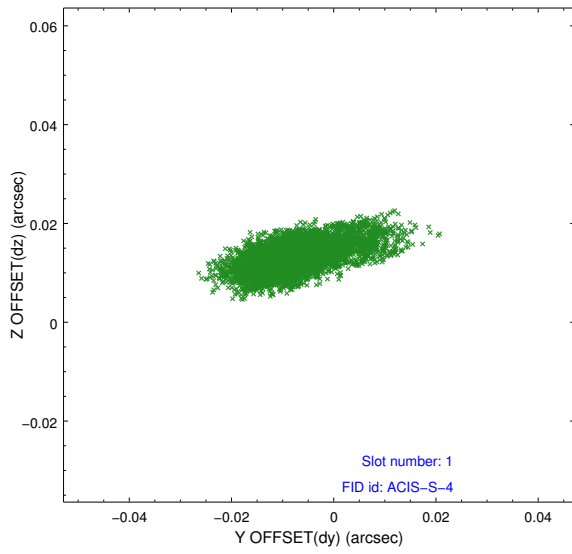


2.5 FID Slots

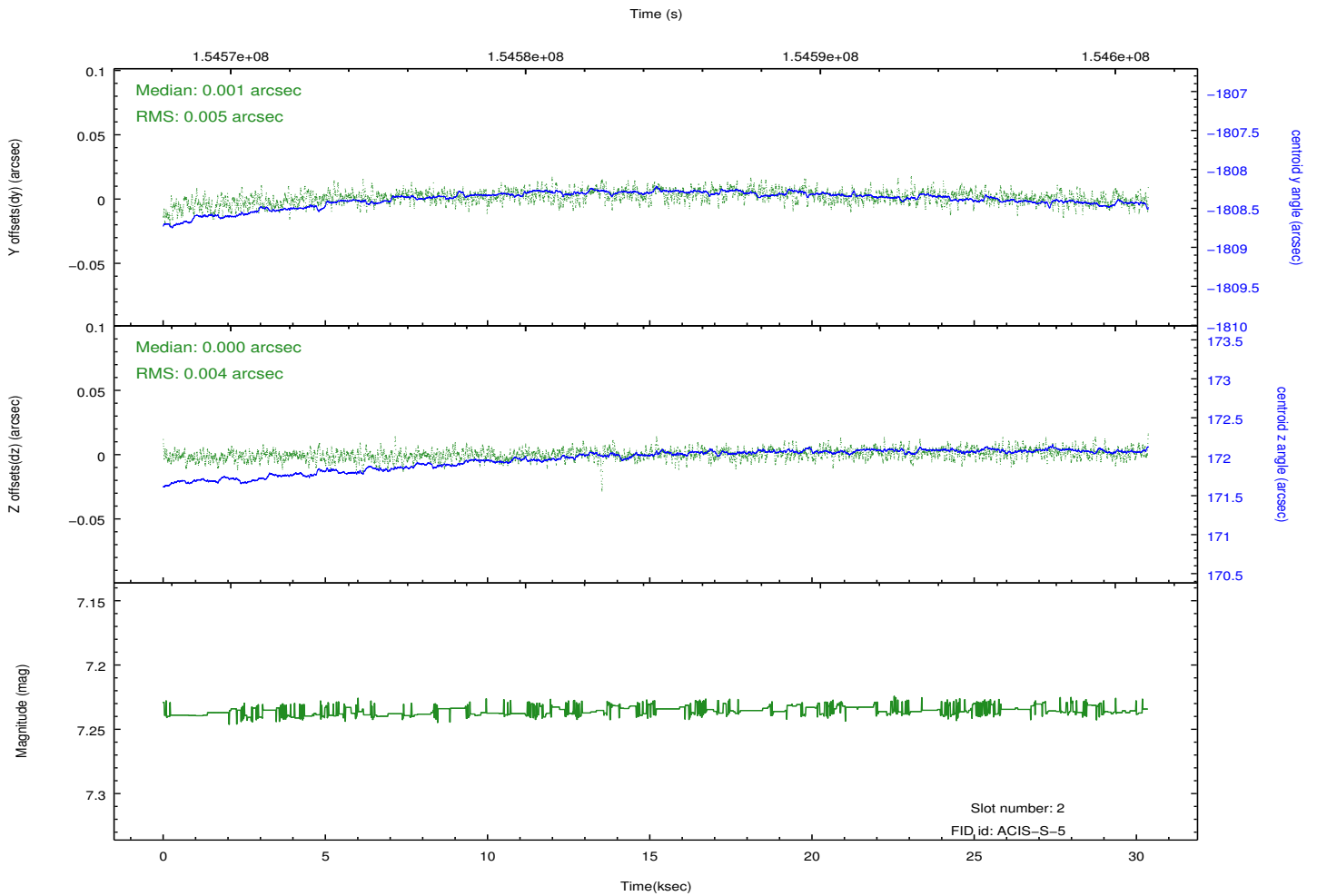
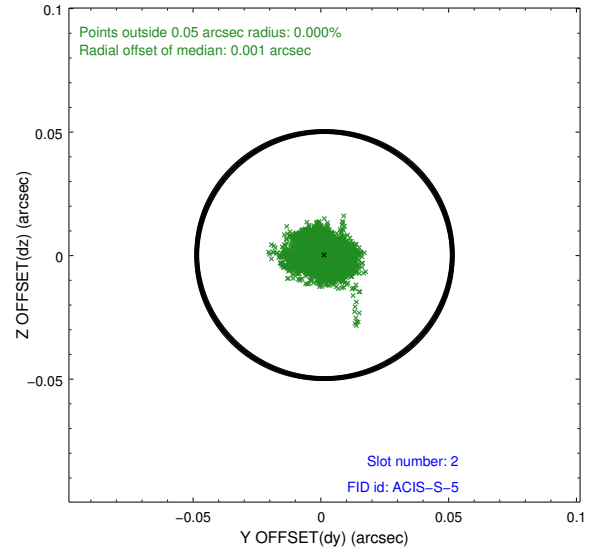
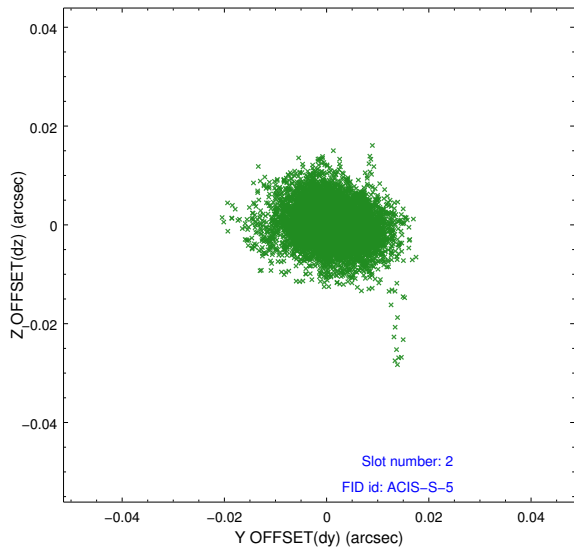
2.5.1 Slot 0



2.5.2 Slot 1



2.5.3 Slot 2



A Summary

A.1 Status

V&V Scientist	Jen Lauer
V&V Date (YYYY-MM-DD)	2012.10.28
V&V Edition	1
V&V Disposition and Status	OK
V&V Charge Time	30.358

A.2 Comments